

## Review Article

# Interactions between amyloid, amyloid precursor protein, and mitochondria

 Heather M. Wilkins<sup>1,2,3</sup>

<sup>1</sup>University of Kansas Alzheimer's Disease Center, Kansas City, KS, U.S.A.; <sup>2</sup>Department of Biochemistry and Molecular Biology, University of Kansas Medical Center, Kansas City, KS, U.S.A.; <sup>3</sup>Department of Neurology, University of Kansas Medical Center, Kansas City, KS, U.S.A.

**Correspondence:** Heather Wilkins (hwilkins@kumc.edu)



Mitochondrial dysfunction and A $\beta$  accumulation are hallmarks of Alzheimer's disease (AD). Decades of research describe a relationship between mitochondrial function and A $\beta$  production. Amyloid precursor protein (APP), of which A $\beta$  is generated from, is found within mitochondria. Studies suggest A $\beta$  can be generated in mitochondria and imported into mitochondria. APP and A $\beta$  alter mitochondrial function, while mitochondrial function alters A $\beta$  production from APP. The role these interactions contribute to AD pathology and progression are unknown. Here, we discuss prior research, the rigor of those studies, and the critical knowledge gaps of relationships between APP, A $\beta$ , and mitochondria.

## Introduction

Amyloid beta (A $\beta$ ) plaques are a hallmark pathology of Alzheimer's disease (AD) and are a diagnostic requirement for AD [1,2]. A $\beta$  is generated from cleavage of amyloid precursor protein (APP) by secretase enzymes [3]. Two APP processing pathways are currently known, the amyloidogenic and the non-amyloidogenic pathways (Figure 1). The non-amyloidogenic pathway is initiated with APP cleavage by  $\alpha$ -secretase (ADAM10), generating soluble APP $\alpha$  (sAPP $\alpha$ ) and C-terminal fragment 83 (C83) [4]. The  $\gamma$ -secretase enzyme complex cleaves C83 into p3 and the APP intracellular domain (AICD) [5]. In the amyloidogenic pathway, APP is first cleaved by  $\beta$ -secretase (BACE1), generating soluble APP $\beta$  (sAPP $\beta$ ) and C-terminal fragment 99 (C99) [6]. The  $\gamma$ -secretase complex cleaves C99 generating A $\beta$  and AICD. The  $\gamma$ -secretase complex is composed of presenilin 1 and or 2 (PS1, PS2-catalytic domain), anterior pharynx defective 1 (APH-1), presenilin enhancer 2 (Pen2), and Nicastrin. Cleavage by the  $\gamma$ -secretase complex occurs in a proof-reading manner, generating multiple A $\beta$  species varying from 38 amino acids in length up to 42 amino acids [5]. A $\beta$ <sub>42</sub> is considered the most aggregation prone species.

Mutations in *APP* and *PS1/PS2* cause familial forms of AD [7]. Duplication of the *APP* gene, or chromosome 21 (in down syndrome) also lead to early onset AD [8]. Transgenic animals which express *APP* or *PS* mutations have A $\beta$  aggregation within the brain without neuronal loss [9,10]. In many cases, cognitive changes occur in these transgenic models prior to A $\beta$  aggregation/plaque formation which is the opposite of what occurs in human AD [11]. Overall, familial forms of AD account for <5% of all cases and data from transgenic models of familial AD do not recapitulate human disease. A major issue and critical knowledge gap is a lack of understanding of the function of APP and its processing/metabolism.

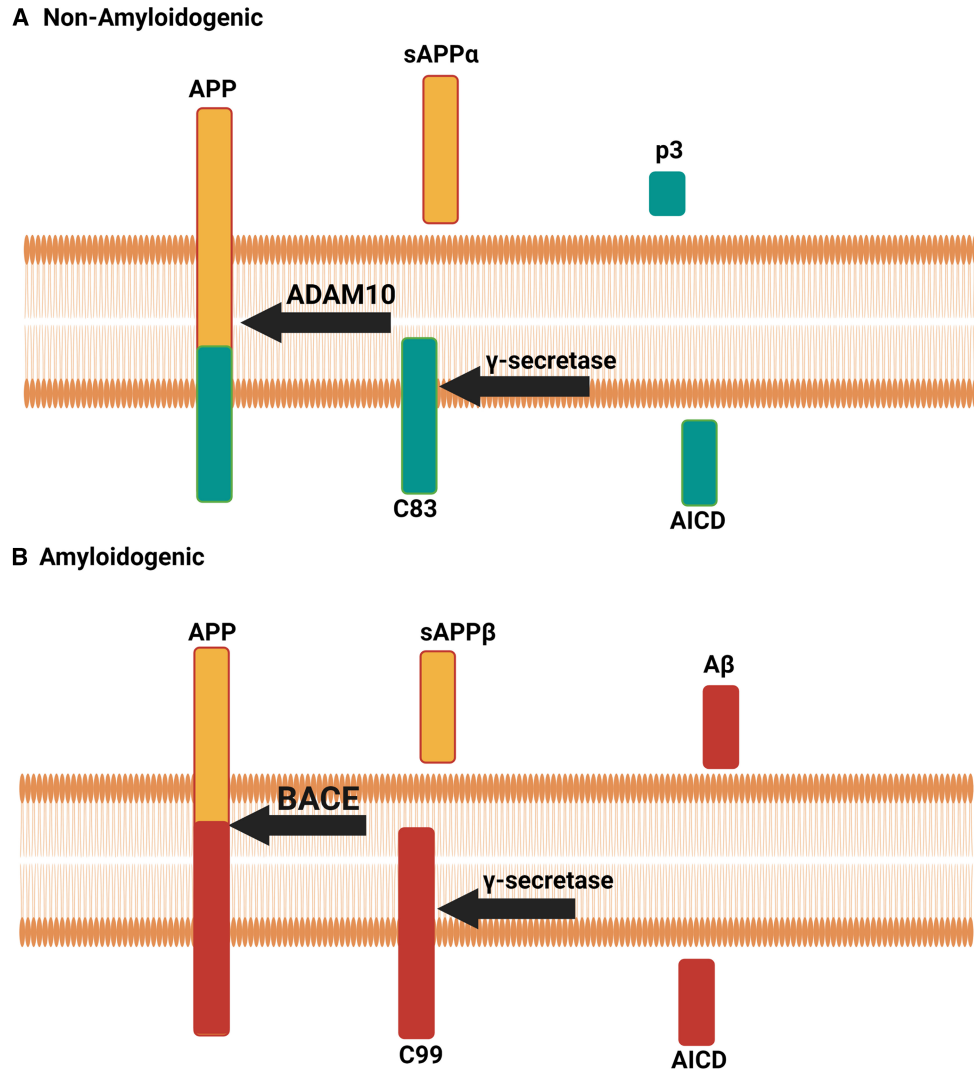
Research from the last several decades have described relationships between mitochondria, APP, A $\beta$ , and  $\gamma$ -secretase. Numerous studies have established localization of APP, A $\beta$ , and  $\gamma$ -secretase at or within mitochondria [12–20]. Conversely, association of APP and A $\beta$  with mitochondria affects mitochondrial function and APP processing flux [3]. Here we will review the relationships between mitochondria, APP, A $\beta$ , and APP processing.

Received: 28 December 2022

Revised: 10 January 2023

Accepted: 12 January 2023

Version of Record published:  
23 January 2023



**Figure 1. APP processing pathways.**

(A) Non-amyloidogenic APP processing. First, APP is cleaved by ADAM10 leading to the production of C83 and sAPP $\alpha$ . Next, C83 is cleaved  $\gamma$ -secretase leading to the production of AICD and p3. (B) Amyloidogenic processing. First, APP is cleaved by BACE1 leading to the production of C99 and sAPP $\beta$ . Next, C99 is cleaved by  $\gamma$ -secretase leading to the production of AICD and A $\beta$ . Created using Biorender.

## Relationships between APP processing and mitochondria

Both *in vitro* and *in vivo* studies describe a strong relationship between mitochondrial function and APP processing. The first studies examined the effects of sodium azide (cytochrome oxidase or COX inhibitor) and uncoupling of mitochondrial membrane potential using FCCP [21]. Gabuzda et al. treated COS cells with both sodium azide and FCCP and noted the accumulation of APP C99 and APP accumulation within the Golgi. COX inhibition alone also reduced sAPP $\alpha$  levels, suggesting decreased non-amyloidogenic APP processing. Bioenergetic stress through glucose deprivation and glycolysis inhibition decreased non-amyloidogenic APP processing [22]. Separate studies verified these findings in PC12 cells and noted that glycolysis inhibition decreased APP glycosylation, an effect that was mitigated through protein kinase c (PKC) [23]. Furthermore, glycolysis inhibition was found to effect APP trafficking to ER and Golgi in HEK cells [24].

Glycolysis flux and COX affect APP processing in numerous cell types. Fibroblasts from AD subjects reduced sAPP $\alpha$  production under conditions of glucose starvation [25]. These effects were enhanced with COX

inhibition. Human fetal astrocytes showed increased A $\beta$  production with glycolysis inhibition through both genetic knockdown of 6-phosphofructo-2-kinase/fructose-2,6-biphosphate (PFKB3) and pharmacological inhibition [26]. It is important to note that glycolysis and mitochondrial respiration are inversely linked, where decreased glycolysis can increase mitochondrial respiration. Furthermore, the downstream effects on reactive oxygen species (ROS), mitochondrial membrane potential, and ATP production were not measured in these studies. Overall, these initial studies depict a strong relationship between APP processing pathways and bioenergetic flux/mitochondrial function.

In transgenic AD mouse models altering mitochondrial function through changes to ROS decreases A $\beta$  plaque burden. Reduced ROS production using two different methods led to a reduction in A $\beta$  plaques with alterations in expression of secretase enzymes and full-length APP. The first study used overexpression of a mitochondrial targeted catalase in the Tg2576 AD mouse model, a method which targets H<sub>2</sub>O<sub>2</sub> production [27]. The second study used overexpression of manganese superoxide dismutase (MnSOD, SOD2) in the Tg19959 AD mouse model, a method which targets superoxide production [28]. Overall, these studies suggest that altering redox and ROS influences APP processing and A $\beta$  production.

Further *in vivo* studies have found that altering mitochondrial function through COX can also decrease A $\beta$  production and plaque burden in AD transgenic mice. For example, reducing COX function through genetic knockdown of *COX10* in AD transgenic mice decreased A $\beta$  plaque burden [29]. In human postmortem brain, higher COX Vmax was associated with higher A $\beta$  burden in non-demented subjects [30]. These findings are interesting because COX Vmax and function are reduced in AD subjects both within the brain (postmortem studies) and systemically (fibroblasts, platelets) [31–34]. Overall *in vitro*, *in vivo*, and postmortem studies depict a strong relationship between COX function and A $\beta$  production.

Alterations to complex I and III activity changes A $\beta$  production both *in vitro* and *in vivo*. Human embryonic kidney (HEK) and SH-SY5Y cells treated with complex I (rotenone) and complex III (antimycin A) inhibitors increased both ROS and A $\beta$  production [35]. In AD transgenic mice rotenone treatment or knockout of *Ndufs4*, a component of complex I, also increased A $\beta$  levels. Further studies have shown that mild reduction in complex I activity reduces A $\beta$  production and improves cognition in AD transgenic mice [36,37]. The mechanism of benefit for mild complex I inhibition is thought to occur through activation of AMP-activated protein kinase (AMPK) using a novel compound, CP2. CP2 also altered redox pairs, including NAD/NADH, AMP/ATP, and ADP/ATP [37]. Similar effects have been observed with metformin, an anti-diabetic drug that inhibits complex I and activates AMPK [38].

Mitochondrial DNA (mtDNA) influences APP processing and A $\beta$  production. Mice which accumulate high levels of mtDNA mutations, showed increased A $\beta$  plaque burden [39]. A separate study created congenic transgenic AD mice with varying mtDNA sequences through breeding [40]. This study created C57Bl/6 mice with mtDNA from other mouse strains including FVB/B, NOD/LtJ, and AKR/J. Altering the mtDNA sequences changed A $\beta$  plaque burden and plaque size, while also altering mitochondrial function. Additional work targeted an endonuclease to the mitochondria, PstI in an AD transgenic mouse model. Expression of the mitochondrial targeted endonuclease reduced mtDNA copy number and reduced A $\beta$  plaques and A $\beta$ <sub>42</sub> levels [41].

Understanding the role mtDNA may contribute to altered mitochondrial function and APP processing pathways requires a unique model. Cytoplasmic hybrids (cybrids) are cells which harbor a consistent nuclear DNA background with mtDNA from donors. Cybrids are created using cells which lack mtDNA through fusion with platelets from donors. Cybrids generated using platelets from AD subjects had increased ROS, decreased ATP, and decreased COX activity [42–46]. AD cybrids also had increased A $\beta$  deposits and A $\beta$ <sub>40</sub>/A $\beta$ <sub>42</sub> ratios. Overall, mtDNA could drive changes to mitochondrial function and alter APP processing pathways.

More recent studies have examined the role of specific mitochondrial changes and their relationship with APP processing. Using SH-SY5Y cells it was found that mitochondrial membrane potential altered A $\beta$  secretion and APP localization to mitochondria [47]. Mitochondrial depolarization reduced A $\beta$  secretion, but increased intracellular A $\beta$  and mitochondrial localized APP. Hyperpolarization of mitochondria increased A $\beta$  secretion, but decreased intracellular A $\beta$  and mitochondrial localized APP. These results were verified using induced pluripotent stem cell (iPSC) derived neurons.

Data spanning decades across *in vitro*, *in vivo*, and postmortem studies describe a strong relationship between mitochondrial function and APP processing. Further research is needed to understand how this relationship may drive AD pathology and cognitive dysfunction. Additional studies have described localization of APP, A $\beta$ , and  $\gamma$ -secretase at mitochondria. There is some equipoise regarding the localization of APP and  $\gamma$ -secretase at mitochondria and how this affects mitochondrial function. These studies and gaps in knowledge are discussed below.

# The effects of APP and APP processing on mitochondria

## Full length APP

APP localizes to mitochondria and evidence of this has been documented across numerous studies and models [12,15–17,47,48]. Localization of APP at mitochondria is noted in human cell culture, mouse models, and post-mortem human brain samples. APP is associated with mitochondria and in mitochondrial associated membranes (MAMs) [14,49]. MAMs are contact sites between the ER and mitochondria which regulate mitochondrial function, calcium flux, and mitophagy.

APP is synthesized and glycosylated within the ER and its currently unknown if APP localization at mitochondria is a result of direct translocation from the ER or translocation from other cell membrane components, like the plasma membrane. Studies and evidence suggest that three positive amino acids in the N-terminus of APP do impact its localization to mitochondria [12]. When those amino acids are mutated to neutral charged amino acids this reduces APP mitochondrial localization. These findings are interesting and suggest APP localizes to mitochondria based on charge-charge interactions, given the overall negative charge of the mitochondrial matrix. More detailed studies are necessary to understand the mechanisms of APP translocation to the mitochondria.

APP localization at mitochondria alters mitochondrial function. *In vitro* experiments utilizing a wide variety of transformed cell types (PC12, HCN1A, SH-SY5Y, N2a cells) have shown that wild-type (WT) APP expression reduced bioenergetic function of cells, including reduced ATP production, COX activity, and altered calcium homeostasis [12,48,50,51]. Other studies have shown that loss of APP at mitochondria also reduces mitochondrial function, with reduced ATP production, increased ROS, and changes to mitochondrial membrane potential [52–54]. APP null mice further support that APP is important for mitochondrial function and cognition. APP knockout (KO) mice have reduced motor performance with increased astrogliosis [55,56]. Astrocytes isolated from APP KO mice have altered calcium homeostasis with reduced mitochondrial calcium and altered mitochondrial structure.

A highly cited study suggests APP interacts with TOM and TIM complexes [17]. The conclusion of the study was that this interaction between APP/TOM/TIM blocks import of nuclear encoded mitochondrial proteins. Using blue native gel electrophoresis high molecular weight complexes positive for APP, TOMM40, and TIMM23 were observed in mitochondrial fractions from postmortem human AD brain [17]. It should be noted that mitochondrial localized APP and these high molecular weight complexes were not observed in postmortem human brain tissue from normal control subjects. This finding is inconsistent with other studies, which depict APP localization at mitochondria in normal control human postmortem brain [57,58]. The AD postmortem brain mitochondria had reduced COX expression and reduced import of COX. This study did not directly show that APP blocks import channels of mitochondria and did not directly show that APP mitochondrial localization blocks import of nuclear encoded proteins into the mitochondria. This highlights a major knowledge gap in the field.

## Soluble APP

The association of sAPP species, either sAPP $\alpha$  or sAPP $\beta$  with mitochondria have not been established. However, through signaling mechanisms sAPP $\alpha$  indirectly modulates mitochondrial function. sAPP $\alpha$  exerts neurotropic effects through phosphatidylinositol-3-kinase-Akt kinase (PI3K) and p42/p44 mitogen-activated protein kinase (ERK1/ERK2) pathways [59]. In additional studies examining myotubes, PI3K mediated changes to glucose uptake through altered APP processing, including sAPP $\alpha$  levels [60]. Furthermore, sAPP $\alpha$  is protective against complex I inhibition through rotenone toxicity in mice expressing WT APP. The protective mechanism is likely mediated by PI3K signaling [61]. The overall neuroprotective effects of sAPP $\alpha$  have been reviewed elsewhere [62]. There is a lack of research examining the direct effects of sAPP species on mitochondria and vice versa. Fulfilling this knowledge gap is critical for the AD field.

## C-terminal fragments of APP

The role of APP versus APP fragments in mitigating effects on mitochondria is not clearly understood. Transgenic AD mouse models, including the 5X FAD model, accumulate C99 within mitochondria [16,58]. Accumulation of C99 in mitochondria resulted in reduced complex II function, increased DNA damage, and cytochrome c release from mitochondria. When BACE1 expression was reduced mitochondrial function was improved in the 5X FAD mouse model. In mouse embryonic fibroblasts (MEF) with PS knockout, C99 accumulates in MAMs and this leads to an overall increase in MAM content [20]. C99 has also been shown to accumulate in MAMs, and this was associated with decreased mitochondrial respiration and altered lipid



content. Overall, the effects of C83 on mitochondria have not been investigated directly but is found within mitochondria [58].

## AICD

AICD is a 57 to 59 amino acid fragment generated from APP CTF upon  $\gamma$ -secretase cleavage. Studies show that AICD can translocate to the nucleus with its coactivator, Fe65 where they modulate gene transcription. Recently AICD has been found within mitochondria [58]. Increased expression of AICD and Fe65 reduce mitochondrial membrane potential, ATP production, and superoxide production [63]. The mechanism was linked to altered actin dynamics and downstream mitochondrial morphology/distribution changes. A separate study suggests that AICD alters PINK1 control of mitophagy and mitochondrial dynamics through altered forkhead box O3a (FOXO3a) activity [64]. Furthermore, AICD can inhibit the transcription of coiled-coil-helix-coiled-coil-helix domain containing 6 (CHCHD6). CHCHD6 regulates mitochondrial contact site and cristae organization [65]. When AICD is specifically targeted to mitochondria it induces apoptosis in a hippocampal cell line, and this effect could be rescued with antioxidants and caspase inhibitors [66]. The effects of AICD on mitochondria are likely due to its ability to change gene transcription in the nucleus and its localization within mitochondria. Its currently not known how AICD affects mitochondrial function, and whether it alters mitochondrial gene transcription.

## Amyloid beta (A $\beta$ )

A $\beta$  is also found within mitochondria across multiple model types including cell cultures, mouse models, and postmortem human brain. The origin of mitochondrial A $\beta$  could be a consequence of local APP processing or through import into the mitochondria. Several studies report a functional  $\gamma$ -secretase complex within mitochondria capable of generating A $\beta$  [13,15,19,67]. Thus far limited studies have reported BACE1 co-localization with mitochondria *in vitro* [68]. Other studies have shown that A $\beta$  is directly imported into mitochondria [18].

The first study to show that A $\beta$  was imported into mitochondria leveraged isolated rat brain mitochondria with exogenous A $\beta$  [18]. Mitochondrial localized A $\beta$  was also shown in human brain tissue using immunogold labeling with EM. The data from this study supports a role for TOM and TIM in the import of A $\beta$  into mitochondria. Additional studies have shown A $\beta$  import into mitochondria and subsequent degradation by the mitochondrial presequence peptidase (PreP) [69]. The interaction between A $\beta$  and PreP can inhibit mitochondrial presequence processing of other mitochondrial proteins, leading to a reduction in mitochondrial peptide turnover in the matrix [70].

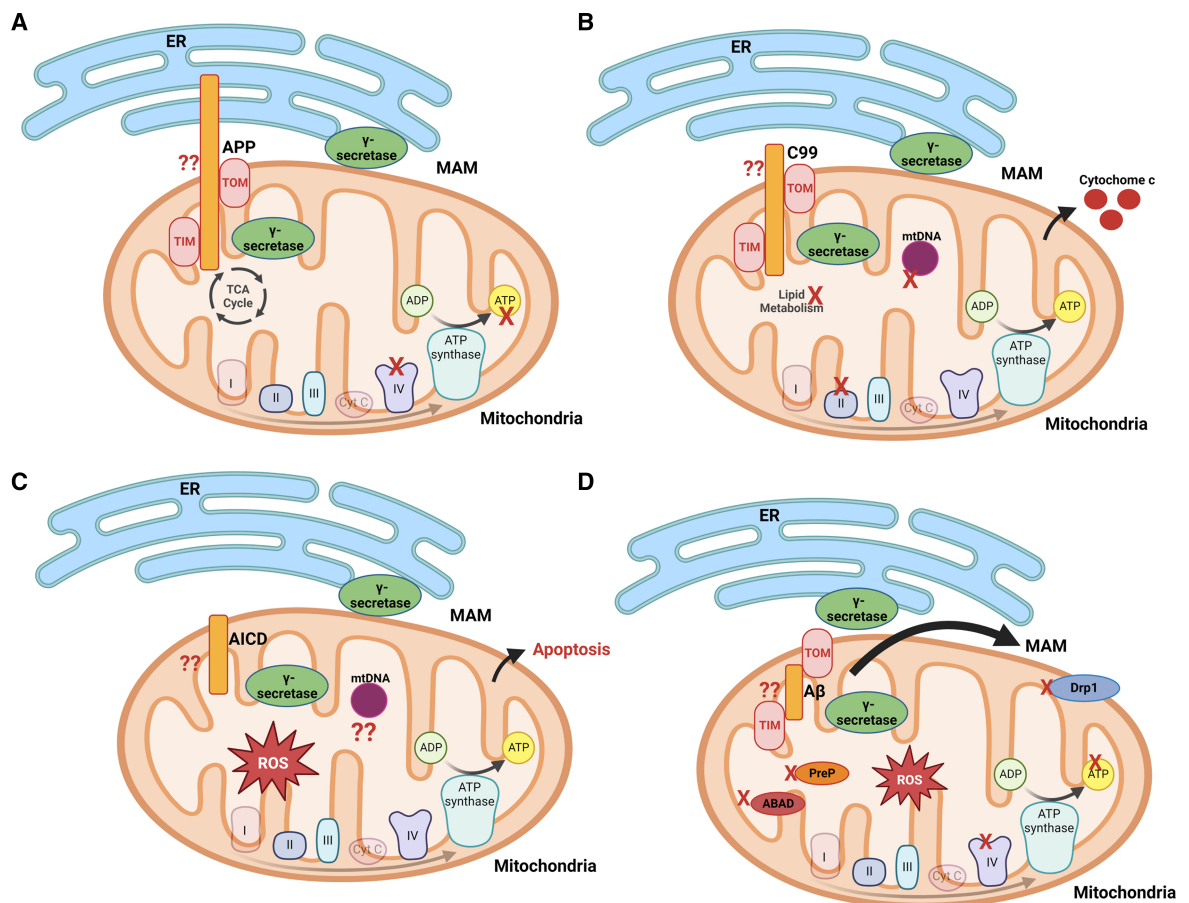
A $\beta$  affects mitochondrial function *in silico*, *in vitro*, and *in vivo*. Incubation of isolated mitochondria with A $\beta_{42}$  and copper lead to a dose dependent reduction in COX activity, this was associated with increased high-molecular weight A $\beta_{42}$  species [71]. In AD transgenic J20 mice, A $\beta$  is found within mitochondria and is associated with mitochondrial dysfunction at complex III and COX [72]. A $\beta$  was shown to interact with A $\beta$ -binding alcohol dehydrogenase (ABAD) in yeast two-hybrid screens, in transgenic AD mice (J20), and postmortem human brain. The interaction between ABAD and A $\beta$  reduced nicotinamide adenine dinucleotide (NAD) binding and altered cognition in transgenic AD mice [73]. Primary neurons cultured from transgenic AD mice overexpressing ABAD had increased ROS production, reduced ATP, and reduced COX activity [74]. Using a separate AD transgenic mouse model with mutant APP and PS1, A $\beta$  accumulation was associated with early mitochondrial dysfunction with increased mitophagy and autophagy [75]. Tg2576 AD mice and neuroblastoma cells expressing mutations in APP have A $\beta$  localized to mitochondria [76]. These models also had increased H<sub>2</sub>O<sub>2</sub> production which correlated with the levels of A $\beta$ . It was further found that COX activity was reduced [76]. Accumulation of H<sub>2</sub>O<sub>2</sub> and decreased COX activity were noted before A $\beta$  plaque deposition. Further studies have shown that A $\beta$  can disrupt mitochondrial fission and fusion dynamics *in vitro* especially through direct interactions with Drp1 [77,78].

A $\beta$  can be generated in MAMs and oligomers of A $\beta$  increase MAM content and mitochondrial calcium content [79]. An active  $\gamma$ -secretase localizes to MAMs and reducing  $\gamma$ -secretase expression/activity alters MAM number [80]. MAM numbers and function are increased in AD, which is hypothesized to increase A $\beta$  production and alter mitochondrial function [49]. MAMs resemble lipid rafts which would facilitate APP processing pathways by secretase enzymes. A $\beta$  can increase MAM number and alter calcium uptake into mitochondria [49,81]. Post-translational modifications of APP, such as lipidation by palmitoleic acid, can alter its localization to MAMs. Reductions in MAM content and activity was shown to reduce APP processing into A $\beta$ , particularly palmitoylated APP within synapses [14].

The relationship between A $\beta$  and mitochondrial function/MAMs has been a large focus of research within the AD field. Despite this, most studies have focused on models which overexpress or expose cells animal models to large amounts of exogenous A $\beta$ . These types of models are difficult to draw firm conclusions from regarding the endogenous function of A $\beta$  within mitochondria. Furthermore, additional studies are required to understand the role of mitochondrial function in A $\beta$  production.

## Concluding remarks

This review focused on studies which examined the relationship between APP, APP processing, and mitochondria. The data supported by current models is outlined in Figure 2. Caution should be taken when drawing conclusions from these current studies as discussed below and highlighted in Figure 2.



**Figure 2. APP, APP fragments, and mitochondria.**

Current knowledge and knowledge gaps. **(A)** Full-length APP and mitochondria. It is unknown if APP translocates into the mitochondria from the ER through MAMs. It is also unknown if APP modulates MAM function. Studies suggest APP inhibits COX (complex IV) and ATP production. Some studies suggest APP associates with TOM and TIM. These findings have not been directly confirmed. It is also unclear the role of full-length APP versus APP fragments. **(B)** CTF of APP (C99) and mitochondria. It is unknown if C99 translocates into the mitochondria or is generated within mitochondria. Studies suggest C99 inhibits complex II, lipid metabolism, damages mtDNA, and induces cytochrome c release. The role of C99 has not been confirmed as independent from A $\beta$ . **(C)** AICD and mitochondria. It is unknown if AICD translocates into the mitochondria or is generated within mitochondria. Studies suggest AICD induces ROS and apoptosis when it is localized to mitochondria. It is unknown how it affects mtDNA or transcription of mitochondrial genes. **(D)** A $\beta$  and mitochondria. It is unknown if A $\beta$  translocates into the mitochondria, is generated within mitochondria, or both. Studies suggest A $\beta$  inhibits COX, ATP production, PreP, ABAD, Drp1, induces ROS, and increases MAM content. Created using Biorender.

Despite decades of research there is still no consensus on the function of APP, why APP is processed to fragments including A $\beta$ , and what causes higher rates of A $\beta$  production in AD. Mitochondrial dysfunction is highly prevalent across AD studies and models. Mitochondrial dysfunction has been shown to alter APP processing and A $\beta$  production. Conversely, the production of A $\beta$  (and other APP fragments) directly alter mitochondrial function. However, the role of full-length APP versus APP proteolytic fragments in altering mitochondrial function is unknown.

A functional  $\gamma$ -secretase is localized within mitochondria and full-length APP and its fragments are also found within mitochondria. Localization of APP, APP fragments, and  $\gamma$ -secretase to mitochondria is observed in both normal control and AD postmortem human tissue. However, one highly cited study depicted localization of APP within mitochondria only in AD human postmortem tissue. This study further suggested that APP blocks the import channels of mitochondria. Many conclusions have been made based on this single study which did not directly show that APP blocks mitochondrial protein import. It has been widely assumed that APP localization at mitochondria is 'bad', but this is based on studies with APP overexpression models. Therefore, studies with endogenous APP protein expression are required to understand the role of APP and its fragments at mitochondria.

## Perspectives

- APP processing to A $\beta$  and mitochondrial dysfunction are observed in AD subjects and experimental models. There are clear relationships between mitochondrial function, APP processing, and A $\beta$ .
- Currently the field has focused on A $\beta$  causing mitochondrial dysfunction, with studies suggesting APP inhibits protein import into mitochondria. Further evidence supports the processing of APP to A $\beta$  within mitochondria.
- Future research should focus on directly assessing the function of APP and A $\beta$  at mitochondria. The field should leverage models which do not overexpress or expose model systems to high levels of exogenous proteins.

## Competing Interests

The author declares that there are no competing interests associated with this manuscript.

## Funding

This study was supported by the Margaret 'Peg' McLaughlin and Lydia A. Walker Opportunity Fund, the University of Kansas Alzheimer's Disease Center P30AG035982, and R00AG056600.

## Abbreviations

ABAD, A $\beta$ -binding alcohol dehydrogenase; AD, Alzheimer's disease; AICD, APP intracellular domain; AMPK, AMP-activated protein kinase; APP, amyloid precursor protein; CHCHD6, coiled-coil-helix-coiled-coil-helix domain containing 6; HEK, human embryonic kidney; KO, knockout; MAMs, mitochondrial associated membranes; NAD, nicotinamide adenine dinucleotide; PI3K, phosphatidylinositol-3-kinase-Akt kinase; ROS, reactive oxygen species; WT, wild-type.

## References

- 1 Braak, H. and Braak, E. (1997) Diagnostic criteria for neuropathologic assessment of Alzheimer's disease. *Neurobiol. Aging* **18**, S85–S88 [https://doi.org/10.1016/s0197-4580\(97\)00062-6](https://doi.org/10.1016/s0197-4580(97)00062-6)
- 2 Committee NS. (2020) Coding Guidebook for the NACC Neuropathology Data Form. 11
- 3 Wilkins, H.M. and Swerdlow, R.H. (2017) Amyloid precursor protein processing and bioenergetics. *Brain Res. Bull.* **133**, 71–79 <https://doi.org/10.1016/j.brainresbull.2016.08.009>

- 4 Allinson, T.M., Parkin, E.T., Turner, A.J. and Hooper, N.M. (2003) ADAMs family members as amyloid precursor protein alpha-secretases. *J. Neurosci. Res.* **74**, 342–352 <https://doi.org/10.1002/jnr.10737>
- 5 Wolfe, M.S. and Miao, Y. (2022) Structure and mechanism of the gamma-secretase intramembrane protease complex. *Curr. Opin. Struct. Biol.* **74**, 102373 <https://doi.org/10.1016/j.sbi.2022.102373>
- 6 Cai, H., Wang, Y., McCarthy, D., Wen, H., Borchelt, D.R., Price, D.L. et al. (2001) BACE1 is the major beta-secretase for generation of Abeta peptides by neurons. *Nat. Neurosci.* **4**, 233–234 <https://doi.org/10.1038/85064>
- 7 [www.alzforum.org/mutations](http://www.alzforum.org/mutations)
- 8 Salehi, A., Ashford, J.W. and Mufson, E.J. (2016) The link between Alzheimer's disease and down syndrome. A historical perspective. *Curr. Alzheimer Res.* **13**, 2–6 <https://doi.org/10.2174/1567205012999151021102914>
- 9 Uddin, M.S., Kabir, M.T., Rahman, M.S., Behl, T., Jeandet, P., Ashraf, G.M. et al. (2020) Revisiting the amyloid cascade hypothesis: from anti-abeta therapeutics to auspicious new ways for Alzheimer's disease. *Int. J. Mol. Sci.* **21**, 5858 <https://doi.org/10.3390/ijms21165858>
- 10 Hall, A.M. and Roberson, E.D. (2012) Mouse models of Alzheimer's disease. *Brain Res. Bull.* **88**, 3–12 <https://doi.org/10.1016/j.brainresbull.2011.11.017>
- 11 Jack CR, J., Barrio, J.R. and Kepe, V. (2013) Cerebral amyloid PET imaging in Alzheimer's disease. *Acta Neuropathol.* **126**, 643–657 <https://doi.org/10.1007/s00401-013-1185-7>
- 12 Anandatheerthavarada, H.K., Biswas, G., Robin, M.A. and Avadhani, N.G. (2003) Mitochondrial targeting and a novel transmembrane arrest of Alzheimer's amyloid precursor protein impairs mitochondrial function in neuronal cells. *J. Cell Biol.* **161**, 41–54 <https://doi.org/10.1083/jcb.200207030>
- 13 Behbahani, H., Pavlov, P.F., Wiehager, B., Nishimura, T., Winblad, B. and Ankarcrona, M. (2010) Association of Omi/HtrA2 with gamma-secretase in mitochondria. *Neurochem. Int.* **57**, 668–675 <https://doi.org/10.1016/j.neuint.2010.08.004>
- 14 Bhattacharyya, R., Black, S.E., Lotlikar, M.S., Fenn, R.H., Jorfi, M., Kovacs, D.M. et al. (2021) Axonal generation of amyloid-beta from palmitoylated APP in mitochondria-associated endoplasmic reticulum membranes. *Cell Rep.* **35**, 109134 <https://doi.org/10.1016/j.celrep.2021.109134>
- 15 Del Prete, D., Suski, J.M., Oules, B., Debayle, D., Gay, A.S., Lacas-Gervais, S. et al. (2017) Localization and processing of the amyloid-beta protein precursor in mitochondria-associated membranes. *J. Alzheimers Dis.* **55**, 1549–1570 <https://doi.org/10.3233/JAD-160953>
- 16 Devi, L. and Ohno, M. (2012) Mitochondrial dysfunction and accumulation of the beta-secretase-cleaved C-terminal fragment of APP in Alzheimer's disease transgenic mice. *Neurobiol. Dis.* **45**, 417–424 <https://doi.org/10.1016/j.nbd.2011.09.001>
- 17 Devi, L., Prabhu, B.M., Galati, D.F., Avadhani, N.G. and Anandatheerthavarada, H.K. (2006) Accumulation of amyloid precursor protein in the mitochondrial import channels of human Alzheimer's disease brain is associated with mitochondrial dysfunction. *J. Neurosci.* **26**, 9057–9068 <https://doi.org/10.1523/JNEUROSCI.1469-06.2006>
- 18 Hansson Petersen, C.A., Alikhani, N., Behbahani, H., Wiehager, B., Pavlov, P.F., Alafuzoff, I. et al. (2008) The amyloid beta-peptide is imported into mitochondria via the TOM import machinery and localized to mitochondrial cristae. *Proc. Natl Acad. Sci. U.S.A.* **105**, 13145–13150 <https://doi.org/10.1073/pnas.0806192105>
- 19 Pavlov, P.F., Wiehager, B., Sakai, J., Frykman, S., Behbahani, H., Winblad, B. et al. (2011) Mitochondrial gamma-secretase participates in the metabolism of mitochondria-associated amyloid precursor protein. *FASEB J.* **25**, 78–88 <https://doi.org/10.1096/fj.10-157230>
- 20 Pera, M., Larrea, D., Guardia-Laguarta, C., Montesinos, J., Velasco, K.R., Agrawal, R.R. et al. (2017) Increased localization of APP-C99 in mitochondria-associated ER membranes causes mitochondrial dysfunction in Alzheimer disease. *EMBO J.* **36**, 3356–3371 <https://doi.org/10.15252/embj.201796797>
- 21 Gabuzda, D., Busciglio, J., Chen, L.B., Matsudaira, P. and Yankner, B.A. (1994) Inhibition of energy metabolism alters the processing of amyloid precursor protein and induces a potentially amyloidogenic derivative. *J. Biol. Chem.* **269**, 13623–8 [https://doi.org/10.1016/S0021-9258\(17\)36875-8](https://doi.org/10.1016/S0021-9258(17)36875-8)
- 22 Gasparini, L., Racchi, M., Benussi, L., Curti, D., Binetti, G., Bianchetti, A. et al. (1997) Effect of energy shortage and oxidative stress on amyloid precursor protein metabolism in COS cells. *Neurosci. Lett.* **231**, 113–117 [https://doi.org/10.1016/s0304-3940\(97\)00536-3](https://doi.org/10.1016/s0304-3940(97)00536-3)
- 23 Henriques, A.G., Domingues, S.C., Fardilha, M., da Cruz e Silva, E.F. and da Cruz e Silva, O.A. (2005) Sodium azide and 2-deoxy-D-glucose-induced cellular stress affects phosphorylation-dependent AbetaPP processing. *J. Alzheimers Dis.* **7**, 201–212 <https://doi.org/10.3233/jad-2005-7302>
- 24 Domingues, S.C., Henriques, A.G., Wu, W., da Cruz e Silva, E.F. and da Cruz e Silva, O.A. (2007) Altered subcellular distribution of the Alzheimer's amyloid precursor protein under stress conditions. *Ann. N. Y. Acad. Sci.* **1096**, 184–195 <https://doi.org/10.1196/annals.1397.085>
- 25 Gasparini, L., Benussi, L., Bianchetti, A., Binetti, G., Curti, D., Govoni, S. et al. (1999) Energy metabolism inhibition impairs amyloid precursor protein secretion from Alzheimer's fibroblasts. *Neurosci. Lett.* **263**, 197–200 [https://doi.org/10.1016/s0304-3940\(99\)00155-x](https://doi.org/10.1016/s0304-3940(99)00155-x)
- 26 Fu, W., Shi, D., Westaway, D. and Jhamandas, J.H. (2015) Bioenergetic mechanisms in astrocytes may contribute to amyloid plaque deposition and toxicity. *J. Biol. Chem.* **290**, 12504–12513 <https://doi.org/10.1074/jbc.M114.618157>
- 27 Mao, P., Manczak, M., Calkins, M.J., Truong, Q., Reddy, T.P., Reddy, A.P. et al. (2012) Mitochondria-targeted catalase reduces abnormal APP processing, amyloid beta production and BACE1 in a mouse model of Alzheimer's/Alzheimer's disease: implications for neuroprotection and lifespan extension. *Hum. Mol. Genet.* **21**, 2973–2990 <https://doi.org/10.1093/hmg/dds128>
- 28 Dumont, M., Wille, E., Stack, C., Calingasan, N.Y., Beal, M.F. and Lin, M.T. (2009) Reduction of oxidative stress, amyloid deposition, and memory deficit by manganese superoxide dismutase overexpression in a transgenic mouse model of Alzheimer's disease. *FASEB J.* **23**, 2459–2466 <https://doi.org/10.1096/fj.09-132928>
- 29 Fukui, H., Diaz, F., Garcia, S. and Moraes, C.T. (2007) Cytochrome c oxidase deficiency in neurons decreases both oxidative stress and amyloid formation in a mouse model of Alzheimer's disease. *Proc. Natl Acad. Sci. U.S.A.* **104**, 14163–8 <https://doi.org/10.1073/pnas.0705738104>
- 30 Troutwine, B.R., Strope, T.A., Franczak, E., Lysaker, C.R., Hamid, L., Mansel, C. et al. (2022) Mitochondrial function and abeta in Alzheimer's disease postmortem brain. *Neurobiol. Dis.* **171**, 105781 <https://doi.org/10.1016/j.nbd.2022.105781>
- 31 Bosetti, F., Brizzi, F., Barogi, S., Mancuso, M., Siciliano, G., Tendi, E.A. et al. (2002) Cytochrome c oxidase and mitochondrial F1F0-ATPase (ATP synthase) activities in platelets and brain from patients with Alzheimer's disease. *Neurobiol. Aging* **23**, 371–376 [https://doi.org/10.1016/s0197-4580\(01\)00314-1](https://doi.org/10.1016/s0197-4580(01)00314-1)
- 32 Cardoso, S.M., Proenca, M.T., Santos, S., Santana, I. and Oliveira, C.R. (2004) Cytochrome c oxidase is decreased in Alzheimer's disease platelets. *Neurobiol. Aging* **25**, 105–110 [https://doi.org/10.1016/s0197-4580\(03\)00033-2](https://doi.org/10.1016/s0197-4580(03)00033-2)
- 33 Parker, Jr, W.D. and Parks, J.K. (1995) Cytochrome c oxidase in Alzheimer's disease brain: purification and characterization. *Neurology* **45**, 482–486 <https://doi.org/10.1212/wnl.45.3.482>



- 34 Wilkins, H.M., Koppel, S.J., Bothwell, R., Mahnken, J., Burns, J.M. and Swerdlow, R.H. (2017) Platelet cytochrome oxidase and citrate synthase activities in APOE epsilon4 carrier and non-carrier Alzheimer's disease patients. *Redox Biol.* **12**, 828–832 <https://doi.org/10.1016/j.redox.2017.04.010>
- 35 Leuner, K., Schutt, T., Kurz, C., Eckert, S.H., Schiller, C., Occhipinti, A. et al. (2012) Mitochondrion-derived reactive oxygen species lead to enhanced amyloid beta formation. *Antioxid. Redox Signal.* **16**, 1421–1433 <https://doi.org/10.1089/ars.2011.4173>
- 36 Stojakovic, A., Trushin, S., Sheu, A., Khalili, L., Chang, S.Y., Li, X. et al. (2021) Partial inhibition of mitochondrial complex I ameliorates Alzheimer's disease pathology and cognition in APP/PS1 female mice. *Commun. Biol.* **4**, 61 <https://doi.org/10.1038/s42003-020-01584-y>
- 37 Zhang, L., Zhang, S., Maezawa, I., Trushin, S., Minhas, P., Pinto, M. et al. (2015) Modulation of mitochondrial complex I activity averts cognitive decline in multiple animal models of familial Alzheimer's disease. *EBioMedicine* **2**, 294–305 <https://doi.org/10.1016/j.ebiom.2015.03.009>
- 38 Lu, X.Y., Huang, S., Chen, Q.B., Zhang, D., Li, W., Ao, R. et al. (2020) Metformin ameliorates abeta pathology by insulin-degrading enzyme in a transgenic mouse model of Alzheimer's disease. *Oxid. Med. Cell. Longev.* **2020**, 2315106 <https://doi.org/10.1155/2020/2315106>
- 39 Trifunovic, A., Wredenberg, A., Falkenberg, M., Spelbrink, J.N., Rovio, A.T., Bruder, C.E. et al. (2004) Premature ageing in mice expressing defective mitochondrial DNA polymerase. *Nature* **429**, 417–423 <https://doi.org/10.1038/nature02517>
- 40 Scheffler, K., Krohn, M., Dunkelmann, T., Stenzel, J., Miroux, B., Ibrahim, S. et al. (2012) Mitochondrial DNA polymorphisms specifically modify cerebral beta-amyloid proteostasis. *Acta Neuropathol.* **124**, 199–208 <https://doi.org/10.1007/s00401-012-0980-x>
- 41 Pinto, M., Pickrell, A.M., Fukui, H. and Moraes, C.T. (2013) Mitochondrial DNA damage in a mouse model of Alzheimer's disease decreases amyloid beta plaque formation. *Neurobiol. Aging* **34**, 2399–2407 <https://doi.org/10.1016/j.neurobiolaging.2013.04.014>
- 42 Cardoso, S.M., Santana, I., Swerdlow, R.H. and Oliveira, C.R. (2004) Mitochondria dysfunction of Alzheimer's disease cybrids enhances abeta toxicity. *J. Neurochem.* **89**, 1417–1426 <https://doi.org/10.1111/j.1471-4159.2004.02438.x>
- 43 Khan, S.M., Cassarino, D.S., Abramova, N.N., Keeney, P.M., Borland, M.K., Trimmer, P.A. et al. (2000) Alzheimer's disease cybrids replicate beta-amyloid abnormalities through cell death pathways. *Ann. Neurol.* **48**, 148–155 [https://doi.org/10.1002/1531-8249\(200008\)48:2<148::AID-ANA3>3.0.CO;2-7](https://doi.org/10.1002/1531-8249(200008)48:2<148::AID-ANA3>3.0.CO;2-7)
- 44 Silva, D.F., Selfridge, J.E., Lu, J., E.L., Roy, N., Hutfles, L., Burns, J.M. et al. (2013) Bioenergetic flux, mitochondrial mass and mitochondrial morphology dynamics in AD and MCI cybrid cell lines. *Hum. Mol. Genet.* **22**, 3931–3946 <https://doi.org/10.1093/hmg/ddt247>
- 45 Swerdlow, R.H., Koppel, S., Weidling, I., Hayley, C., Ji, Y. and Wilkins, H.M. (2017) Mitochondria, cybrids, aging, and Alzheimer's disease. *Prog. Mol. Biol. Transl. Sci.* **146**, 259–302 <https://doi.org/10.1016/bs.pmbts.2016.12.017>
- 46 Trimmer, P.A., Keeney, P.M., Borland, M.K., Simon, F.A., Almeida, J., Swerdlow, R.H. et al. (2004) Mitochondrial abnormalities in cybrid cell models of sporadic Alzheimer's disease worsen with passage in culture. *Neurobiol. Dis.* **15**, 29–39 <https://doi.org/10.1016/j.nbd.2003.09.011>
- 47 Wilkins, H.M., Troutwine, B.R., Menta, B.W., Manley, S.J., Strope, T.A., Lysaker, C.R. et al. (2022) Mitochondrial membrane potential influences amyloid-beta protein precursor localization and amyloid-beta secretion. *J. Alzheimers Dis.* **85**, 381–394 <https://doi.org/10.3233/JAD-215280>
- 48 Yang, T.T., Hsu, C.T. and Kuo, Y.M. (2009) Amyloid precursor protein, heat-shock proteins, and Bcl-2 form a complex in mitochondria and modulate mitochondria function and apoptosis in N2a cells. *Mech. Ageing Dev.* **130**, 592–601 <https://doi.org/10.1016/j.mad.2009.07.002>
- 49 Area-Gomez, E., Del Carmen Lara Castillo, M., Tambini, M.D., Guardia-Laguarta, C., de Groof, A.J., Madra, M. et al. (2012) Upregulated function of mitochondria-associated ER membranes in Alzheimer disease. *EMBO J.* **31**, 4106–4123 <https://doi.org/10.1038/emboj.2012.202>
- 50 Lopez Sanchez, M.I.G., Waugh, H.S., Tsatsanis, A., Wong, B.X., Crowston, J.G., Duce, J.A. et al. (2017) Amyloid precursor protein drives down-regulation of mitochondrial oxidative phosphorylation independent of amyloid beta. *Sci. Rep.* **7**, 9835 <https://doi.org/10.1038/s41598-017-10233-0>
- 51 Keil, U., Bonert, A., Marques, C.A., Scherping, I., Weyermann, J., Strosznajder, J.B. et al. (2004) Amyloid beta-induced changes in nitric oxide production and mitochondrial activity lead to apoptosis. *J. Biol. Chem.* **279**, 50310–50320 <https://doi.org/10.1074/jbc.M405600200>
- 52 Wang, Y., Wu, F., Pan, H., Zheng, W., Feng, C., Wang, Y. et al. (2016) Lost region in amyloid precursor protein (APP) through TALEN-mediated genome editing alters mitochondrial morphology. *Sci. Rep.* **6**, 22244 <https://doi.org/10.1038/srep22244>
- 53 Del Prete, D., Rice, R.C., Rajadhyaksha, A.M. and D'Adamio, L. (2016) Amyloid precursor protein (APP) may act as a substrate and a recognition unit for CRL4CRBN and Stub1 E3 ligases facilitating ubiquitination of proteins involved in presynaptic functions and neurodegeneration. *J. Biol. Chem.* **291**, 17209–17227 <https://doi.org/10.1074/jbc.M116.733626>
- 54 Schaefer, P.M., von Einem, B., Walther, P., Calzia, E. and von Arnim, C.A. (2016) Metabolic characterization of intact cells reveals intracellular amyloid beta but not its precursor protein to reduce mitochondrial respiration. *PLoS ONE* **11**, e0168157 <https://doi.org/10.1371/journal.pone.0168157>
- 55 Zheng, H., Jiang, M., Trumbauer, M.E., Sirinathsinghji, D.J., Hopkins, R., Smith, D.W. et al. (1995) beta-Amyloid precursor protein-deficient mice show reactive gliosis and decreased locomotor activity. *Cell* **81**, 525–531 [https://doi.org/10.1016/0092-8674\(95\)90073-x](https://doi.org/10.1016/0092-8674(95)90073-x)
- 56 Montagna, E., Crux, S., Luckner, M., Herber, J., Colombo, A.V., Marinkovic, P. et al. (2019) *In vivo* Ca<sup>2+</sup> imaging of astrocytic microdomains reveals a critical role of the amyloid precursor protein for mitochondria. *Glia* **67**, 985–998 <https://doi.org/10.1002/glia.23584>
- 57 Walls, K.C., Coskun, P., Gallegos-Perez, J.L., Zadorian, N., Freude, K., Rasool, S. et al. (2012) Swedish Alzheimer mutation induces mitochondrial dysfunction mediated by HSP60 mislocalization of amyloid precursor protein (APP) and beta-amyloid. *J. Biol. Chem.* **287**, 30317–30327 <https://doi.org/10.1074/jbc.M112.365890>
- 58 Vaillant-Beuchot, L., Mary, A., Pardossi-Piquard, R., Bourgeois, A., Lauritzen, I., Eysert, F. et al. (2021) Accumulation of amyloid precursor protein C-terminal fragments triggers mitochondrial structure, function, and mitophagy defects in Alzheimer's disease models and human brains. *Acta Neuropathol.* **141**, 39–65 <https://doi.org/10.1007/s00401-020-02234-7>
- 59 Cheng, G., Yu, Z., Zhou, D. and Mattson, M.P. (2002) Phosphatidylinositol-3-kinase-Akt kinase and p42/p44 mitogen-activated protein kinases mediate neurotrophic and excitoprotective actions of a secreted form of amyloid precursor protein. *Exp. Neurol.* **175**, 407–414 <https://doi.org/10.1006/exnr.2002.7920>
- 60 Hamilton, D.L., Findlay, J.A., Montagut, G., Meakin, P.J., Bestow, D., Jalicy, S.M. et al. (2014) Altered amyloid precursor protein processing regulates glucose uptake and oxidation in cultured rodent myotubes. *Diabetologia* **57**, 1684–1692 <https://doi.org/10.1007/s00125-014-3269-x>
- 61 Cimdinis, K., Waugh, H.S., Chrysostomou, V., Lopez Sanchez, M.I.G., Johannsen, V.A., Cook, M.J. et al. (2019) Amyloid precursor protein mediates neuronal protection from rotenone toxicity. *Mol. Neurobiol.* **56**, 5471–5482 <https://doi.org/10.1007/s12035-018-1460-7>
- 62 Dar, N.J. and Glazner, G.W. (2020) Deciphering the neuroprotective and neurogenic potential of soluble amyloid precursor protein alpha (sAPPalpha). *Cell. Mol. Life Sci.* **77**, 2315–2330 <https://doi.org/10.1007/s00018-019-03404-x>

- 63 Ward, M.W., Concannon, C.G., Whyte, J., Walsh, C.M., Corley, B. and Prehn, J.H. (2010) The amyloid precursor protein intracellular domain(AICD) disrupts actin dynamics and mitochondrial bioenergetics. *J. Neurochem.* **113**, 275–284 <https://doi.org/10.1111/j.1471-4159.2010.06615.x>
- 64 Goiran, T., Duplan, E., Chami, M., Bourgeois, A., El Mana, W., Rouland, L. et al. (2018) beta-amyloid precursor protein intracellular domain controls mitochondrial function by modulating phosphatase and tensin homolog-induced kinase 1 transcription in cells and in Alzheimer mice models. *Biol. Psychiatry* **83**, 416–427 <https://doi.org/10.1016/j.biopsych.2017.04.011>
- 65 Shang, Y., Sun, X., Chen, X., Wang, Q., Wang, E.J., Miller, E. et al. (2022) A CHCHD6-APP axis connects amyloid and mitochondrial pathology in Alzheimer's disease. *Acta Neuropathol.* **144**, 911–938 <https://doi.org/10.1007/s00401-022-02499-0>
- 66 Sandberg, A.A., Manning, E., Wilkins, H.M., Mazzarino, R., Minckley, T., Swerdlow, R.H. et al. (2022) Mitochondrial targeting of amyloid-beta protein precursor intracellular domain induces hippocampal cell death via a mechanism distinct from amyloid-beta. *J. Alzheimers Dis.* **86**, 1727–1744 <https://doi.org/10.3233/JAD-215108>
- 67 Hansson, C.A., Frykman, S., Farmery, M.R., Tjernberg, L.O., Nilsberth, C., Pursglove, S.E. et al. (2004) Nicastrin, presenilin, APH-1, and PEN-2 form active gamma-secretase complexes in mitochondria. *J. Biol. Chem.* **279**, 51654–51660 <https://doi.org/10.1074/jbc.M404500200>
- 68 Francelin, C., Mitter, S.K., Qian, Q., Barodia, S.K., Ip, C., Qi, X. et al. (2021) BACE1 inhibition increases susceptibility to oxidative stress by promoting mitochondrial damage. *Antioxidants (Basel)* **10**, 1539 <https://doi.org/10.3390/antiox10101539>
- 69 Falkevall, A., Alikhani, N., Bhushan, S., Pavlov, P.F., Busch, K., Johnson, K.A. et al. (2006) Degradation of the amyloid beta-protein by the novel mitochondrial peptidase, PrP. *J. Biol. Chem.* **281**, 29096–29104 <https://doi.org/10.1074/jbc.M602532200>
- 70 Mossmann, D., Vogtle, F.N., Taskin, A.A., Teixeira, P.F., Ring, J., Burkhart, J.M. et al. (2014) Amyloid-beta peptide induces mitochondrial dysfunction by inhibition of preprotein maturation. *Cell Metab.* **20**, 662–669 <https://doi.org/10.1016/j.cmet.2014.07.024>
- 71 Crouch, P.J., Blake, R., Duce, J.A., Ciccotosto, G.D., Li, Q.X., Barnham, K.J. et al. (2005) Copper-dependent inhibition of human cytochrome c oxidase by a dimeric conformer of amyloid-beta1-42. *J. Neurosci.* **25**, 672–679 <https://doi.org/10.1523/JNEUROSCI.4276-04.2005>
- 72 Caspersen, C., Wang, N., Yao, J., Sosunov, A., Chen, X., Lustbader, J.W. et al. (2005) Mitochondrial Abeta: a potential focal point for neuronal metabolic dysfunction in Alzheimer's disease. *FASEB J.* **19**, 2040–2041 <https://doi.org/10.1096/fj.05-3735fje>
- 73 Lustbader, J.W., Cirilli, M., Lin, C., Xu, H.W., Takuma, K., Wang, N. et al. (2004) ABAD directly links Abeta to mitochondrial toxicity in Alzheimer's disease. *Science* **304**, 448–452 <https://doi.org/10.1126/science.1091230>
- 74 Takuma, K., Yao, J., Huang, J., Xu, H., Chen, X., Luddy, J. et al. (2005) ABAD enhances Abeta-induced cell stress via mitochondrial dysfunction. *FASEB J.* **19**, 597–598 <https://doi.org/10.1096/fj.04-2582fje>
- 75 de la Cueva, M., Antequera, D., Ordonez-Gutierrez, L., Wandosell, F., Camins, A., Carro, E. et al. (2022) Amyloid-beta impairs mitochondrial dynamics and autophagy in Alzheimer's disease experimental models. *Sci. Rep.* **12**, 10092 <https://doi.org/10.1038/s41598-022-13683-3>
- 76 Manczak, M., Anekonda, T.S., Henson, E., Park, B.S., Quinn, J. and Reddy, P.H. (2006) Mitochondria are a direct site of A beta accumulation in Alzheimer's disease neurons: implications for free radical generation and oxidative damage in disease progression. *Hum. Mol. Genet.* **15**, 1437–1449 <https://doi.org/10.1093/hmg/ddl066>
- 77 Wang, X., Su, B., Siedlak, S.L., Moreira, P.I., Fujioka, H., Wang, Y. et al. (2008) Amyloid-beta overproduction causes abnormal mitochondrial dynamics via differential modulation of mitochondrial fission/fusion proteins. *Proc. Natl Acad. Sci. U.S.A.* **105**, 19318–19323 <https://doi.org/10.1073/pnas.0804871105>
- 78 Manczak, M., Calkins, M.J. and Reddy, P.H. (2011) Impaired mitochondrial dynamics and abnormal interaction of amyloid beta with mitochondrial protein Drp1 in neurons from patients with Alzheimer's disease: implications for neuronal damage. *Hum. Mol. Genet.* **20**, 2495–2509 <https://doi.org/10.1093/hmg/ddr139>
- 79 Calvo-Rodriguez, M., Hernando-Perez, E., Nunez, L. and Villalobos, C. (2019) Amyloid beta oligomers increase ER-mitochondria Ca<sup>2+</sup> cross talk in young hippocampal neurons and exacerbate aging-induced intracellular Ca<sup>2+</sup> remodeling. *Front. Cell Neurosci.* **13**, 22 <https://doi.org/10.3389/fncel.2019.00022>
- 80 Area-Gomez, E., de Groof, A.J., Boldogh, I., Bird, T.D., Gibson, G.E., Koehler, C.M. et al. (2009) Presenilins are enriched in endoplasmic reticulum membranes associated with mitochondria. *Am. J. Pathol.* **175**, 1810–1816 <https://doi.org/10.2353/ajpath.2009.090219>
- 81 Hedskog, L., Pinho, C.M., Filadi, R., Ronnback, A., Hertwig, L., Wiehager, B. et al. (2013) Modulation of the endoplasmic reticulum-mitochondria interface in Alzheimer's disease and related models. *Proc. Natl Acad. Sci. U.S.A.* **110**, 7916–7921 <https://doi.org/10.1073/pnas.1300677110>