



Interannual variability of mean sea level and its sensitivity to wind climate in an inter-tidal basin

Theo Gerkema¹ and Matias Duran-Matute^{2,1}

¹Department for Estuarine and Delta Systems, NIOZ Netherlands Institute for Sea Research, and Utrecht University, P.O. Box 140, 4400 AC Yerseke, the Netherlands

²Department of Applied Physics, Technical University Eindhoven, P.O. Box 513, 5600 MB Eindhoven, the Netherlands

Correspondence: Theo Gerkema (gerk@nioz.nl)

Received: 29 March 2017 – Discussion started: 25 April 2017

Revised: 14 October 2017 – Accepted: 26 October 2017 – Published: 20 December 2017

Abstract. The relationship between the annual wind records from a weather station and annual mean sea level in an inter-tidal basin, the Dutch Wadden Sea, is examined. Recent, homogeneous wind records are used, covering the past 2 decades. It is demonstrated that even such a relatively short record is sufficient for finding a convincing relationship. The interannual variability of mean sea level is largely explained by the west–east component of the net wind energy, with some further improvement if one also includes the south–north component and the annual mean atmospheric pressure. Using measured data from a weather station is found to give a slight improvement over reanalysis data, but for both the correlation between annual mean sea level and wind energy in the west–east direction is high. For different tide gauge stations in the Dutch Wadden Sea and along the coast, we find the same qualitative characteristics, but even within this small region, different locations show a different sensitivity of annual mean sea level to wind direction. Correcting observed values of annual mean level for meteorological factors reduces the margin of error (expressed as 95 % confidence interval) by more than a factor of 4 in the trends of the 20-year sea level record. Supplementary data from a numerical hydrodynamical model are used to illustrate the regional variability in annual mean sea level and its interannual variability at a high spatial resolution. This study implies that climatic changes in the strength of winds from a specific direction may affect local annual mean sea level quite significantly.

1 Introduction

Changes in relative mean sea level affect coastal areas in various ways, such as altering the risk of flooding, the evolution of barrier island systems, or the development of salt marshes, as reviewed by FitzGerald et al. (2008). Trends in these changes are partly masked by variability on timescales from days to decades. Some of this variability, for instance due to wind waves and tides (with the exception of long-period tides), is easily averaged out. In contrast, interannual variability is found to be irregular and large, of the order of a few decimeters, as is evident from tide gauge records around the world (see, e.g., Woodworth et al., 2011). This is why the climatic trend, typically of a few millimeters per year, can only be reliably identified by examining a record that is long

enough to outweigh the interannual and decadal variabilities. The 95 % confidence interval on the trend, as a function of record length, was summarized in a graph by Zervas (2009): the interval is nearly $\pm 3 \text{ mm yr}^{-1}$ for a 20-year record, but drops quickly for longer ones; for a 60-year record, the confidence interval already drops below $\pm 0.5 \text{ mm yr}^{-1}$. The latter was adopted by Douglas (1991) as the minimum record length in his analysis on global sea level rise.

The meteorological factors of wind and atmospheric pressure have been identified as possible causes of interannual and decadal variability of mean sea level (Stammer et al., 2013). For example, on a decadal timescale, the steep rise of annual mean sea level in the western Pacific Ocean was traced back to a strengthening of trade winds in a modeling

study by Merrifield and Maltrud (2011). Sea level variations in the Indo–Pacific region were shown to be connected with decadal variability in wind stress (Lee and McPhaden, 2008). Decadal oscillations such as El Niño–Southern Oscillation (ENSO) or North Atlantic Oscillation (NAO) have also been identified in several sea level records (Stammer et al., 2013; Frederikse et al., 2016).

Correlations have been reported between annual mean atmospheric pressure and annual mean sea level, e.g., for the southwestern British coast (Pugh, 2004) and the Norwegian coast (Richter et al., 2012). Dangendorf et al. (2013) examined trends in annual mean sea level as well as trends for individual seasons (i.e., quarterly mean values), which turned out to differ significantly due to wind climate (we will come back to this phenomenon in Sect. 2.1). With a view to long-term coastal protection, de Ronde et al. (2014) reported on trends in sea level rise along the Dutch coast, with and without correcting for meteorological factors and other effects (such as the 18.6-year nodal cycle). They analyzed the period 1970–2012 and found a strong effect of wind on annual mean sea level.

In this study, we elaborate on these results and examine the regional variability of the sensitivity to wind climate. We focus on the inter-tidal area of the Dutch Wadden Sea, which offers an interesting case because of the complex morphology and shallowness, and hence, a complex response to wind in the circulation and sea level (Duran-Matute et al., 2014, 2016). We include annual mean atmospheric pressure along with the annual characteristics of the wind climate. The aim is to relate interannual variability of mean sea level with data from meteorological records and determine the regional variations in this relationship. Using meteorological records involves the challenge of finding reliable and consistent long-term time series of wind speed and direction. For example, some wind records from weather stations in the Netherlands (the case studied in this paper) date back to the early 20th century, but they are unsuitable for trend analysis because of inhomogeneities in the record (see Sect. 2.2). For this reason, we will use only more recent wind records, from the past 2 decades, which turns out to be sufficient for finding a convincing relationship with annual mean sea level. An alternative would be to use atmospheric reanalysis data; examples are the studies by Dangendorf et al. (2013) and Baart et al. (2014); we show a comparison in Sect. 5.5.

Using annual mean wind energy (split into sectorial or vectorial directions) and annual mean atmospheric pressure to examine their relationship to annual mean sea level, assumes an underlying linearity in the cause–effect relationship. While on shorter timescales (hours, days) there is a direct mechanistic relationship between wind forcing or atmospheric pressure and sea level (as demonstrated by the accuracy of hydrodynamical models, e.g., Zijl et al., 2013), it is not a priori clear that this signal is carried over to their annual mean values. The validity of this approach will become evident from the results.

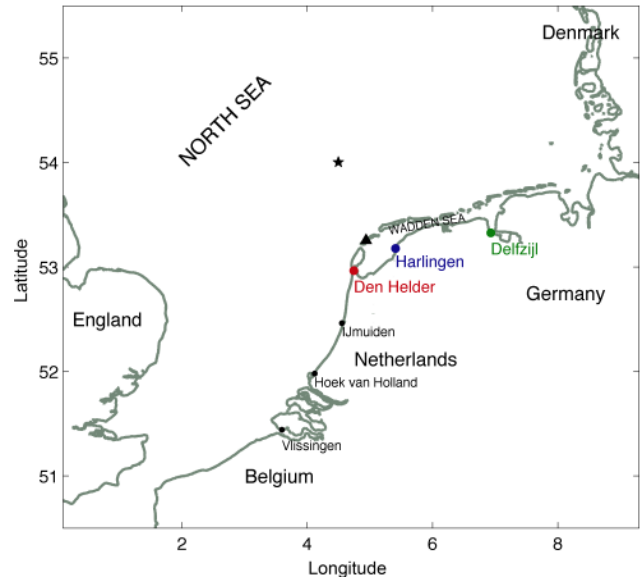


Figure 1. A map depicting the tide gauge stations analyzed in this paper: Delfzijl (green), Harlingen (blue), and Den Helder (red). Other stations (IJmuiden, Hoek van Holland, and Vlissingen) are only briefly discussed. The location of Vlieland weather station is indicated by a black triangle. The star denotes the grid point from which the reanalysis data are taken, discussed in Sect. 5.5.

In Sect. 2, we present the data records and methods used in this paper, both for annual mean sea level and the wind climate. In Sect. 3, we examine the correlations between the two and present annual mean sea levels that are corrected for meteorological effects. In Sect. 4, the regional patterns characterizing interannual variability of annual mean sea level are illustrated by means of results from a numerical model for the Dutch Wadden Sea. Finally, we discuss unresolved issues and summarize our findings in Sects. 5 and 6.

2 Data records and methodology

We examine relative sea level changes at the Dutch coast, with a focus on three tide gauges in the Dutch Wadden Sea (from northeast westward: Delfzijl, Harlingen, and Den Helder), in relation to the wind climate from the record at Vlieland weather station. All relevant locations are indicated on the map in Fig. 1.

2.1 Sea level variations

At the Permanent Service for Mean Sea Level (PSMSL), data from tide gauges along the Dutch coast (supplied by Rijkswaterstaat) are adjusted to the Revised Local Reference datum values (Woodworth and Player, 2003). As a basis for our calculations, we use the monthly mean values that are provided by the PSMSL website (www.psmsl.org).

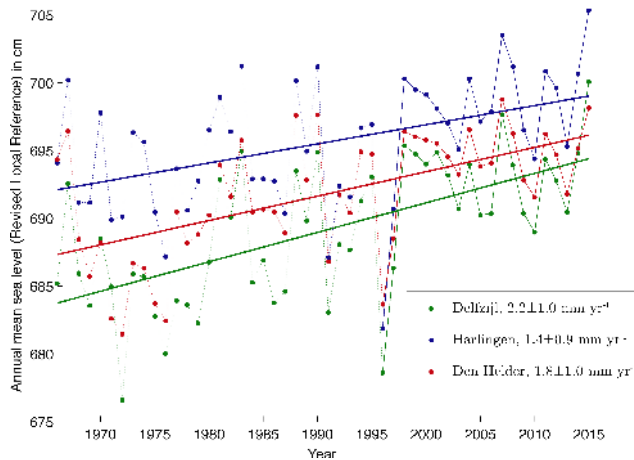


Figure 2. Annual mean sea level at three tide gauges in the Dutch Wadden Sea, during the past half century. The record of the last 20 years is indicated in thin solid lines. The 50-year trend (least squares fit) is plotted in thick solid lines and listed in the legend, together with the 95 % confidence interval.

In Fig. 2, we show the annual mean values of sea level for the period 1966–2015, for three tide gauges in the Dutch Wadden Sea. Trends, plotted in solid lines, are based on this 50-year period. We obtained the trends from a least squares fit (for a discussion on alternative methods, see Dangendorf et al., 2015). The 95 % confidence interval on the slope is indicated in the legend and is calculated by a standard statistical method (Montgomery and Runger, 2003), namely as $\pm t_{\alpha/2, n-2} \sqrt{SS_E / (n-2) S_{xx}}$. Here $\alpha = 0.05$ for a 95 % confidence interval, sample size is n , SS_E is the error sum of squares $SS_E = \sum (y_i - \hat{y}_i)^2$, and $S_{xx} = \sum (x_i - \bar{x})^2$, where (x_i, y_i) are the observations, \bar{x} is the mean of the set x_i , and \hat{y}_i are the regression values; t is the two-tailed t value.

However, time series of sea level may exhibit serial correlation, which reduces the effective sample size. We account for this effect by replacing n with an effective sample size n_* in the calculation of the confidence interval, following a common procedure (e.g., Santer et al., 2000). First, we calculate the lag-1 autocorrelation coefficient (r_1) of the de-trended series $\tilde{y}_i = y_i - \hat{y}_i$, i.e., the correlation between $(\tilde{y}_1, \dots, \tilde{y}_{n-1})$ and $(\tilde{y}_2, \dots, \tilde{y}_n)$. The effective sample size then follows as $n_* = n(1 - r_1)/(1 + r_1)$. For the three cases shown in Fig. 2, the confidence interval is, on average, enlarged by a factor of 1.24 as a result of using n_* instead of n .

To test the robustness of the trends, we alternatively calculated them by using the Theil–Sen method (e.g., Sprent, 1993), which has the advantage of being less sensitive to outliers than linear regression. The difference between the methods was found to be slight: 0.1 mm yr^{-1} at most. Hereafter, we opted for linear regression because the associated method of obtaining confidence intervals is more firmly established.

The trends differ between the stations but not beyond the margin of uncertainty, as indicated in the legend of Fig. 2.

Table 1. Trends in sea level rise and 95 % confidence intervals (all in mm yr^{-1}) for annual and seasonal half-year means. (Derived from 100-year records, 1916–2015, supplied by Rijkswaterstaat and PSMML.)

Station	Annual mean	Summer mean	Winter mean
Delfzijl	1.95 ± 0.31	1.65 ± 0.24	2.28 ± 0.50
Harlingen	1.27 ± 0.32	0.88 ± 0.29	1.69 ± 0.49
Den Helder	1.59 ± 0.30	1.34 ± 0.26	1.87 ± 0.44
IJmuiden	2.15 ± 0.38	1.87 ± 0.34	2.48 ± 0.45
Hoek van Holland	2.36 ± 0.30	2.13 ± 0.25	2.64 ± 0.42
Vlissingen	2.07 ± 0.31	1.90 ± 0.29	2.25 ± 0.36

A longer record is needed to sufficiently reduce the confidence intervals and ascertain a difference in trends, as demonstrated by de Ronde et al. (2014) and seen in the results from a 100-year record shown in Table 1.

Our focus in this paper is on the last 20 years, i.e., the period 1996–2015 (indicated in thin solid lines in Fig. 2). It is of great interest to know whether the trend from the past half century has continued during the last 2 decades, or whether there is an acceleration or deceleration in the rise. However, for the period 1996–2015, taken in isolation, the 95 % confidence interval is as large as $\pm 5.4 \text{ mm yr}^{-1}$, the average for the six tide gauge stations marked in Fig. 1. This wide confidence interval precludes a meaningful estimate of a recent trend from these data. It is worthwhile pointing out that the effect of using the effective sample size is considerable: it almost doubles the confidence interval in comparison with one calculated by using simply the actual sample size, which would have produced $\pm 2.8 \text{ mm yr}^{-1}$ (again the average for the six stations).

Instead of looking at annual mean values of sea level, we may select a sub-interval, a particular month or quarter, for example. For Cuxhaven in the German Bight, Dangendorf et al. (2013) demonstrated that the interannual variability in mean values for the second and third quarters is markedly lower than those for the first and fourth quarters – a reflection of the difference in wind intensities between the summer and winter half-years (see Fig. 4a). Hence the summer half-year offers a more suitable starting point for deducing long-term trends than the full year, since the noise of interannual variability is weaker. However, Dangendorf et al. (2013) also demonstrated that the trends are not the same for different quarters. As a consequence, selecting the summer half-year does not necessarily reveal the trend of annual mean sea level. This is not only true for the location examined by Dangendorf et al. (2013), but it also holds for the stations along the Dutch coast. We show an example in Fig. 3 and list the values for all six stations in Table 1. During the past 100 years, mean winter half-year levels (October–March, combining the fourth and first quarters from successive years) have risen more strongly than mean summer half-year levels (second and third quarters). The most conspicuous exam-

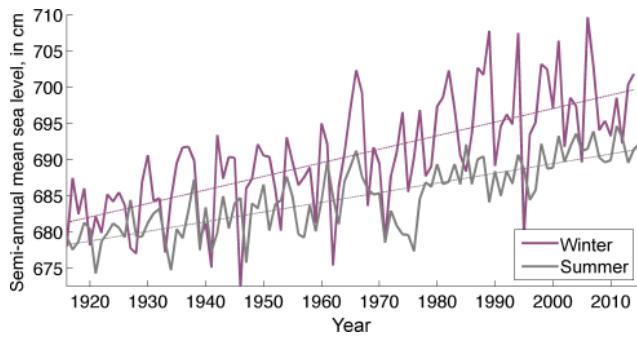


Figure 3. Evolution of winter and summer half-year mean sea levels at Den Helder and corresponding trends from linear regression. See also Table 1 for the slope and confidence interval of the trends.

ple is Harlingen, where mean winter levels rose nearly twice as fast as mean summer levels; the distinction between the trends is statistically significant because the confidence intervals show no overlap. For the other stations, there is some overlap; yet, the fact that the sharper rise during the winter half-year occurs for all stations makes it plausible that the phenomenon is real. Its relevance extends to projections of risks of flooding, where trends of annual mean values have been the default reference. The distinction between half-year trends matters because severe storms (in northwest Europe) mostly occur in the winter half-year, when the background mean sea level is already higher than the annual mean and moreover has been rising more rapidly, as Table 1 suggests.

The trends based on annual mean values, also listed in Table 1, lie in-between those half-year trends and are in agreement with previously calculated trends by Wahl et al. (2013). Besides the problem of a difference in trend between summer half-year and full years, the reduction in the confidence interval gained by selecting the summer half-year is actually modest (see Table 1). Hereafter, we therefore focus on annual mean values, i.e., derived from full-year data.

2.2 Wind record

We analyze records of wind data from Vlieland weather station (KNMI station 242), which is located on a large sand flat. There are no obstacles in its immediate vicinity, and it lies well exposed to winds from all angles. The data are publicly available from a portal of the KNMI (Royal Netherlands Meteorological Institute) at <http://projects.knmi.nl/klimatologie/uurgegevens>. Records of wind speed and direction from KNMI weather stations span in some cases more than a century. However, from time to time, changes have occurred in the measurement techniques, which may have produced inhomogeneities in the time series. This involves, for instance, changes in the height or location of the instruments, a replacement of instruments, changes in surrounding vegetation or buildings, or changes in protocol, as documented by Verkaik (2001). Thus, the KNMI data come with the caveat

that the “series are not suitable for trend analysis”. For example, the Kooy/Den Helder weather station (used by de Ronde et al., 2014) has been subject to some relocations, which has impaired the homogeneity of the record. To avoid these problems, we restrict ourselves to data from the 20-year period 1996–2015 recorded by the automatic weather station on Vlieland, without apparent inhomogeneities (apart from a few gaps, discussed below).

Hourly values of wind speed W and direction D are used. They are defined as the mean speed and direction during the last 10 min interval of the preceding hour and are labeled with hourly interval index i .

We divide the wind direction into eight sectors, labeled with $n = 1, \dots, 8$, respectively as follows: northerly (N), northeasterly (NE), easterly (E), southeasterly (SE), southerly (S), southwesterly (SW), westerly (W), and northwesterly (NW). This is the direction *from* which the wind blows.

To characterize the wind climate, we will use wind energy, but other quantities could be used as well. Another natural choice would be the wind stress. However, one then has to adopt a formulation for the drag coefficient in terms of wind strength, which should be valid for the entire range from breezes to hurricanes. A simple form of the drag coefficient (e.g., Guan and Xie, 2004) would involve a linear dependence on wind speed W , implying a cubic power in the stress. By using energy, we get that power straight away without having to enter the uncertain territory of how to define the drag coefficient. We carried out tests and found that the results are actually not very sensitive to the choice of the power. This agrees with the finding by Richter et al. (2012) that it is immaterial whether one uses wind speed or stress.

Hourly wind speed (as defined above) has a certain magnitude $W_{n,i}$, with sectorial direction n . The kinetic energy E_n of wind crossing a vertical plane area A can be written as follows:

$$E_{n,i} = \frac{1}{2} m_{n,i} W_{n,i}^2 = \frac{1}{2} \rho V_{n,i} W_{n,i}^2 = \frac{1}{2} \rho A \Delta t W_{n,i}^3,$$

with mass m and volume V , which equals the area A times the length $W \Delta t$ (Δt is the hourly interval, in seconds). We assume ρ , the density of air, to be constant (1.225 kg m^{-3} , at sea level with temperature 15°C); the area A is taken to be 1 m^2 .

In a given year, the total number of data points, for all directions combined, is denoted by M_a (this number may differ between years because of leap years or occasional gaps in the data that arise when the wind direction is too variable and hence undefined). Thus, for a given sectorial direction n , the annual mean energy is

$$\begin{aligned} E_n &= M_a^{-1} \sum_i E_{n,i} = \frac{1}{2} \rho A \Delta t M_a^{-1} \sum_i W_{n,i}^3 \\ &= C M_a^{-1} \sum_i W_{n,i}^3, \end{aligned} \quad (1)$$

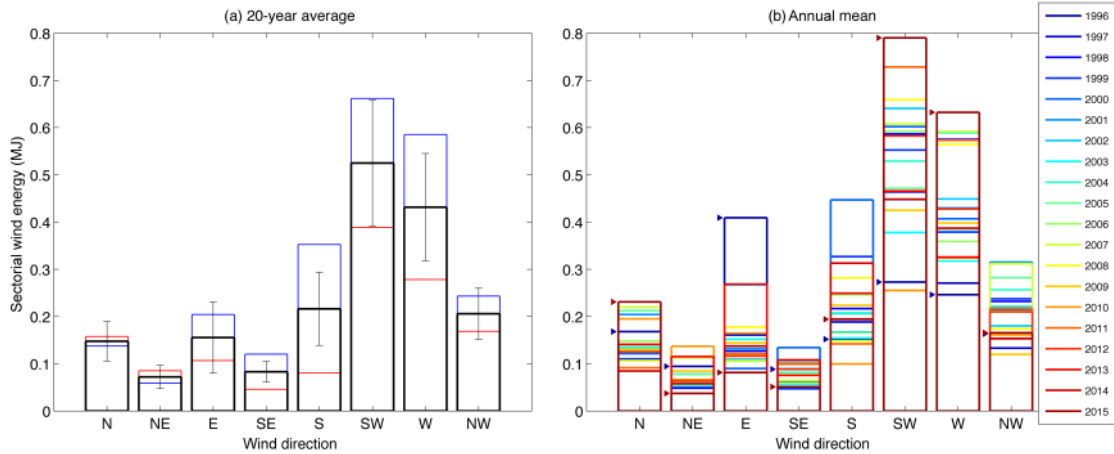


Figure 4. Annual mean wind energy at Vlieland weather station, divided into eight sectorial directions. In (a) the average over the 20-year record (1996–2015), in black. The vertical line segments represent the standard deviations for each sector, as an indication of the typical interannual variability. Also shown are the averages of the summer half-year (in red) and winter half-year (in blue). In (b) the sectorial annual mean wind energy for all individual years. For clarity, the extreme years 1996 (dark blue) and 2015 (dark red) are highlighted with triangles alongside the bars.

with constant $C = \frac{1}{2} \rho A \Delta t = 2.2 \times 10^3 \text{ kg s m}^{-1}$. We follow this procedure for all individual years. Wind energy will be expressed in megajoules (MJ).

The data from Vlieland weather station contain a few gaps (20–21 December 2002, 13–19 February 2008, and 2 July–3 August 2015). They were filled in by substituting data from another weather station on a neighboring island (Terschelling Hoorn). The long-term mean energy levels are generally lower there than at Vlieland because the station lies more sheltered, especially from northerly winds. However, for each individual wind sector the ratio is nearly constant over the years, so we can reliably fill in the missing data from Vlieland by using the data from Terschelling and applying the correction factors to the individual sectors. One day in 2002, when neither station worked, missing data were filled in by linear interpolation.

2.3 Wind climate and interannual variability

Averaging over the full 20-year record (Fig. 4a), we find that the highest wind energy comes from the southwesterly and westerly directions. Together, they contain more energy than all other directions combined. The lowest energy comes from the northeasterly and southeasterly directions. We have compared this sectorial distribution with those from some other weather stations in the northeastern and southwestern corners of the Netherlands (Huibertgat and Lichteiland Goeree, respectively); they confirm this pattern but appear less exposed to offshore winds than Vlieland weather station. In Fig. 4a, we also show the difference between winter and summer half-years, again averaged over the 20-year record. For all major sectors, wind energy is substantially lower in summer, most markedly so for southerly winds.

Focusing now on the interannual variability, we look at the sectorial distribution for all individual years from 1996 to 2015 (Fig. 4b). In terms of the absolute range of values attained, the interannual variability is largest for the southwesterly direction. Alternatively, we can quantify the variability for each individual sector by calculating its relative standard deviation (i.e., the standard deviation divided by the mean, and expressed as a percentage). This gives 28 % (N), 34 % (NE), 49 % (E), 26 % (SE), 36 % (S), 25 % (SW), and 26 % (W), and 26 % (NW).

In contrast, the annual mean wind energy for all sectors combined, i.e., summed over the eight sectors, turns out to be fairly constant throughout the 20-year record (see Fig. 5). Its relative standard deviation is 13 %, which is much smaller than the value for any of the individual directions (listed above). Hence, it is not so much the total wind energy that varies between years but rather the share each of the sectors gets from this total.

As an aside, we note that the somewhat oscillating pattern in Fig. 5, with minima in 1997, 2003, and 2010, does not appear to have any obvious connection with indices like ENSO or NAO.

3 Correlations

We first give a detailed overview of the results from the tide gauge at Den Helder before summarizing the results from the other stations.

3.1 Wind sectors and annual mean sea level

Elaborating on the results in Fig. 4b for the eight wind sectors at Vlieland weather station, we calculate the correlation

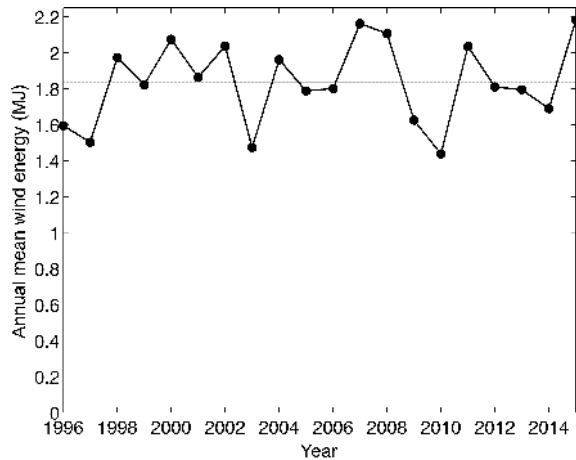


Figure 5. Annual mean wind energy summed over all eight sectors, at Vlieland weather station. The 20-year mean is indicated by the horizontal grey line.

between the annual mean wind energy for each of the eight sectors and the annual mean sea level at Den Helder. The outcome is shown in Fig. 6. The high correlations for the easterly and westerly winds stand out, with correlation coefficients $R = -0.77$ and $+0.81$, respectively. The negative coefficient means that easterly winds lower the mean sea level, as they drain off water from the Wadden Sea into the North Sea. Westerly winds have the opposite effect, resulting in a positive correlation coefficient. This relationship was already observed on a much shorter timescale of one tidal period (Duran-Matute et al., 2016). Indeed, the mechanistic relationship between wind and surges or depressions of sea level comes into play on the timescale of hours to days; models are well able to capture this (e.g., Zijl et al., 2013). On an annual timescale, the aggregate wind energy and mean sea level still show such a connection; the aggregate of the mechanistic effects that actually occur on a much shorter timescale.

The predominant role of zonal winds at the Dutch coast agrees with recent results by Dangendorf et al. (2014) and Frederikse et al. (2016) for the North Sea area. They found a contrasting outcome at the British North Sea coast, where the role of the wind is much smaller and is surpassed by the inverted barometer effect.

Figure 6 is useful for providing a first impression, but the eight sectors cannot be regarded as independent. In a vectorial sense, after all, there are only two independent components in the wind direction.

3.2 Vectorial wind direction, air pressure, and annual mean sea level

To examine the vectorial (as opposed to sectorial) wind direction, we return to the original wind data and now decompose every hourly value of D_i into west–east and south–north

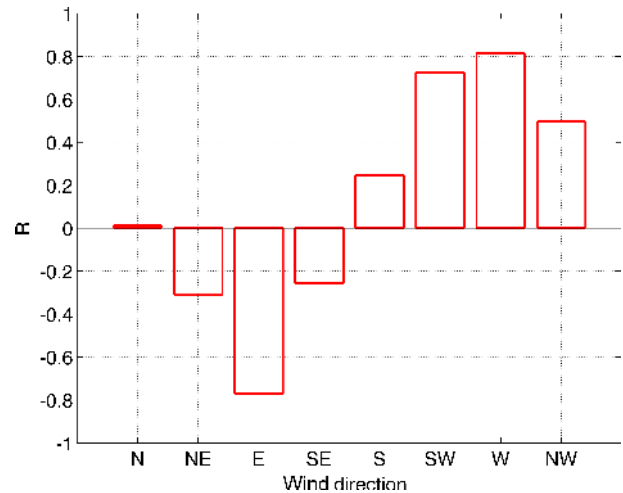


Figure 6. Correlation coefficient R , based on a 20-year record, representing the correlation between annual mean sea level at Den Helder (Fig. 2) and annual aggregate wind energy for each of the eight sectors, calculated from the wind record at Vlieland weather station (Fig. 4b).

components, D_i being the direction from which the wind blows. The angle D_i is defined east of north.

We apply this decomposition of direction to the energy values and then sum, for every individual year, all west–east contributions and all south–north contributions:

$$E_{WE} = -CM_a^{-1} \sum_i W_i^3 \sin(D_i),$$

$$E_{SN} = -CM_a^{-1} \sum_i W_i^3 \cos(D_i). \quad (2)$$

The minus signs on the right-hand side mean that winds from the west or south count as positive, and winds from the east or north as negative. (In the hypothetical case that there is as much energy in winds from the west as from the east, the result of the summation will be zero.) For proper comparison between years, we divide by the total annual number of data points, M_a . E_{WE} and E_{SN} thus represent the annual mean vectorial components of the wind energy.

3.3 Simple correlation

We first focus on the west–east (hereafter, WE) vectorial component *alone*, which already produces a very high correlation coefficient with annual mean sea level: $R = 0.92$. The scatter plot is shown in Fig. 7. The mean WE energy is positive in all years, meaning that the westerly component dominates the easterly one, in agreement with Fig. 4. However, one point in the lower left corner of Fig. 7 lies close to zero; this is the anomalous year 1996, in which easterly winds were exceptionally strong and (south)westerly winds exceptionally weak (see blue triangles in Fig. 4). The oppo-

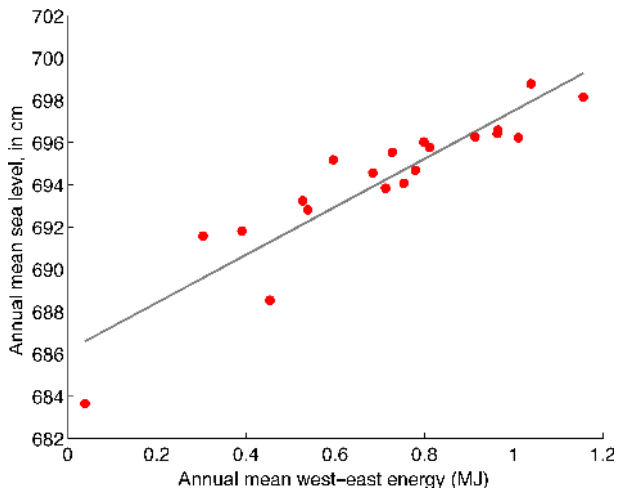


Figure 7. Annual mean sea level versus the annual mean west–east energy component; the correlation is $R = 0.92$. The least squares fit is shown as the grey line.

site case occurred in 2015 (red triangles in Fig. 4), which we correspondingly find farthest on the right in Fig. 7.

The grey line in Fig. 7 shows the least squares fit. Using this line and the values of the annual aggregate WE wind energy, we can calculate a reconstructed annual mean sea level. The result is shown in Fig. 8, blue line. It lies close to the observed annual mean sea level (in black), which means that the WE wind already explains most of the interannual variability.

For the other two tide gauge stations in the Dutch Wadden Sea, we can follow the same procedure and find similar correlation coefficients: 0.90 (Harlingen) and 0.88 (Delfzijl). For the additional tide gauges shown in Fig. 1, the correlation decreases to 0.73 for Vlissingen, suggesting a weaker influence by WE winds and a larger role for other factors, which will be confirmed below.

3.4 Multiple regression

We can improve on this result by also including the annual mean south–north component of wind energy as well as the annual mean atmospheric pressure, p_{ann} (in addition, one may include time, in years, as a fourth independent variable; we discuss this in Sect. 5.1). We deal with all three independent variables at once by using multiple regression (the backlash operator in MATLAB).

For Den Helder, the resulting reconstruction of annual mean sea level is shown as the red line in Fig. 8. Other stations can be treated in the same way; the collected results are shown in Table 2. In all cases, the west–east wind energy coefficient is dominant and positive. The south–north wind energy carries a negative coefficient, implying that southerly (northerly) winds create a lowering (surge) in mean sea level. The inverted barometer effect is found to

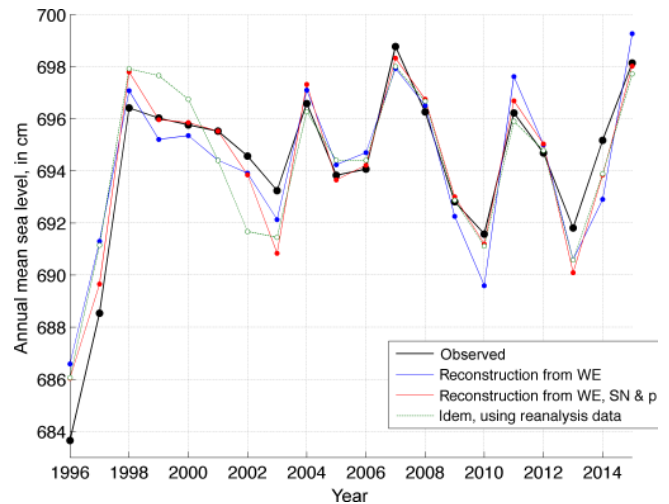


Figure 8. Observed annual mean sea level at Den Helder is replicated in black from Fig. 2. The blue and red lines represent reconstructed annual mean sea levels based on atmospheric data. The blue line results from the annual mean west–east component of wind energy combined with the least squares fit of Fig. 7. The red line uses a multiple regression involving both directions of the wind energy vector (i.e., west–east and south–north) as well as the annual mean atmospheric pressure at Vlieland weather station. The green dashed line is a reconstruction based on reanalysis data.

be $0.95 \text{ cm mbar}^{-1}$ (on average), which is close to the theoretical value of 1.0 cm mbar^{-1} (e.g., Pugh, 2004). Annual mean pressure at Vlieland weather station varies between 1013 and 1017 mbar; hence, this range accounts for an interannual variability in mean sea level of at most 4 cm.

The upshot is that we can construct an annual mean sea level ζ_c from the atmospheric data. Overall, this constructed level corresponds with the observed annual mean sea level to within the errors listed in Table 2. The constructed level is given by

$$\zeta_c = C_0 + C_{WE} \times E_{WE} + C_{SN} \times E_{SN} + C_p \times p_{\text{ann}}.$$

As constants C_0 , C_{WE} , C_{SN} , and C_p are known from multiple regression, we can use meteorological data E_{WE} , E_{SN} , and p_{ann} to estimate the mean sea level for any given year. It is important to realize that the constants depend on the location of the tide gauge, as indicated in Table 2. In particular, the sensitivities on WE and SN winds vary spatially. An extreme case is Harlingen, with the highest factor for WE winds and the lowest for SN winds; the other extreme, Hoek van Holland and Vlissingen, have the lowest factor for WE winds and the highest for SN winds.

If there were no wind at all, the annual mean sea level would be $\zeta_c = C_0 + C_p \times p_{\text{ann}}$. Taking the 20-year average of annual mean pressure (\bar{p} , 1015 mbar), we obtain a reference for mean sea level with any atmospheric variability removed.

In this analysis, we used the data from Vlieland weather station throughout. For the tide gauges like Delfzijl or

Table 2. Coefficients representing the effect of the wind climate and atmospheric pressure on annual mean sea level. Each is based on a combination of data from a tide gauge and Vlieland weather station. The root-mean-square error of the least squares fit is also listed. The trend with 95 % confidence interval is obtained from linear regression after correcting observed annual mean sea levels for meteorological effects. In brackets, we list the results from an extended multiple regression in which time is included to allow for a direct estimate of the trend; this is discussed in Sect. 5.1.

Coefficient	Delfzijl	Harlingen	Den Helder	IJmuiden	Hoek van Holland	Vlissingen
C_0 (10^3 cm)	1.62 (1.59)	1.64 (1.60)	1.48 (1.47)	1.61 (1.60)	1.83 (1.81)	1.71 (1.67)
C_{WE} (cm MJ $^{-1}$)	14.9 (14.2)	16.7 (15.5)	12.2 (11.7)	12.2 (12.0)	10.0 (9.28)	10.7 (9.57)
C_{SN} (cm MJ $^{-1}$)	-2.42 (-2.55)	-1.76 (-1.97)	-3.01 (-3.08)	-3.98 (-4.02)	-5.21 (-5.34)	-7.27 (-7.47)
C_p (cm mbar $^{-1}$)	-0.92 (-0.89)	-0.94 (-0.90)	-0.79 (-0.77)	-0.90 (-0.90)	-1.13 (-1.10)	-1.01 (-0.97)
RMS error (cm)	2.04 (1.85)	2.00 (1.24)	1.16 (1.05)	1.62 (1.64)	1.59 (1.27)	1.95 (1.34)
Trend (mm yr $^{-1}$)	1.5 ± 1.9 (1.6)	2.4 ± 0.7 (2.6)	0.8 ± 1.0 (0.9)	0.4 ± 1.7 (0.5)	1.5 ± 0.9 (1.6)	2.2 ± 1.0 (2.3)

Vlissingen, it would seem natural to take a more nearby weather station instead. However, it turns out that this makes the reconstruction worse. This may in part be due to the lesser quality of the data, but it also relates to the question of what spatial scale in the end determines the local annual mean sea level. In the case at hand, presumably, the crucial factor is how the wind in the central North Sea creates surges; for this, the Vlieland weather station is more indicative than other, more remote stations.

3.5 Corrected levels

Finally, we can correct for the atmospheric effects as quantified in Table 2 by subtracting the atmospheric-induced variations, contained in ζ_c , from the original observed annual mean sea level ζ_{obs} . The result is shown in Fig. 9 for the three tide gauge stations in the Wadden Sea. We arbitrarily introduced an offset, for which we choose the reference level corresponding with long-term mean atmospheric pressure \bar{p} , i.e., $C_0 + C_p \bar{p}$.

Figure 9 demonstrates that the interannual variability is greatly reduced by the atmospheric correction. Using linear regression, we can calculate the trend of the corrected signal, along with the 95 % confidence interval on the slope; they are listed in the legend of Fig. 9 and in Table 2. For the six stations depicted in Fig. 1, the mean 95 % confidence interval is ± 1.2 mm yr $^{-1}$, which is smaller by a factor of 4.5 compared to the interval derived from the original (i.e., uncorrected) 20-year data set, as discussed in Sect. 2.1. It is also interesting to note that the atmospheric correction reduces the difference between using the effective and the actual sample size; the latter gives a confidence interval of ± 1.1 mm yr $^{-1}$. Without correction for atmospheric effects, the difference was much larger, as discussed in Sect. 2.1. This means that the atmospheric corrections reduce the serial correlation in the time series.

Whilst the confidence intervals are still too large to draw conclusions on a possible change of trend compared to the 50-year period, their reduction demonstrates that a correction for meteorological factors offers a substantial gain.

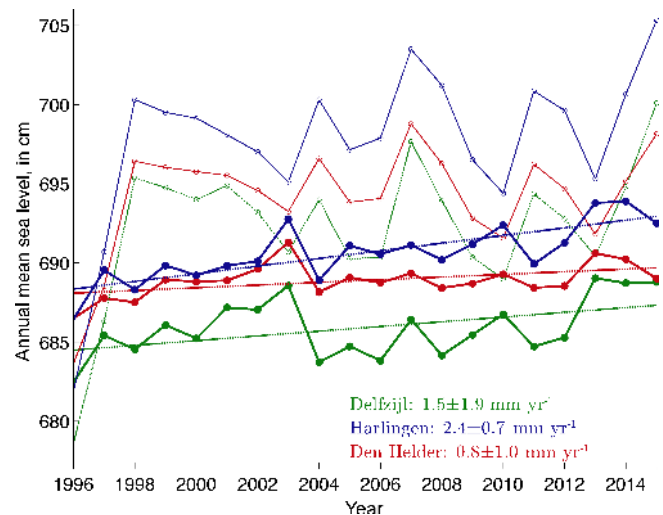


Figure 9. Annual mean sea level at three tide gauges in the Dutch Wadden Sea replicated in thin lines from Fig. 2 for the stations Delfzijl (green), Harlingen (blue), and Den Helder (red). Also shown is the result after correction for atmospheric effects (thick lines), together with fits from linear regression (dashed). The trend with 95 % confidence interval on the slope is listed in the legend for each case.

4 Regional variability

Interannual variability of mean sea level in the Dutch Wadden Sea is evident from the three tide gauges examined in previous sections, but to identify spatial patterns in these variabilities, we need a higher spatial resolution. In Duran-Matute et al. (2014), a 3-D hydrodynamic model was run for the Dutch Wadden Sea under realistic forcing, for the period 2009–2011. This includes atmospheric forcing (wind stress and atmospheric pressure) obtained from reanalysis data. Sea level, accounting for tides and large-scale storm effects in the North Sea, was prescribed at the open boundaries; within the model domain, the wind stress acted as a forcing on the free surface. The horizontal resolution was 200 m; in the vertical, 30 sigma-layers were used. For further details we refer to

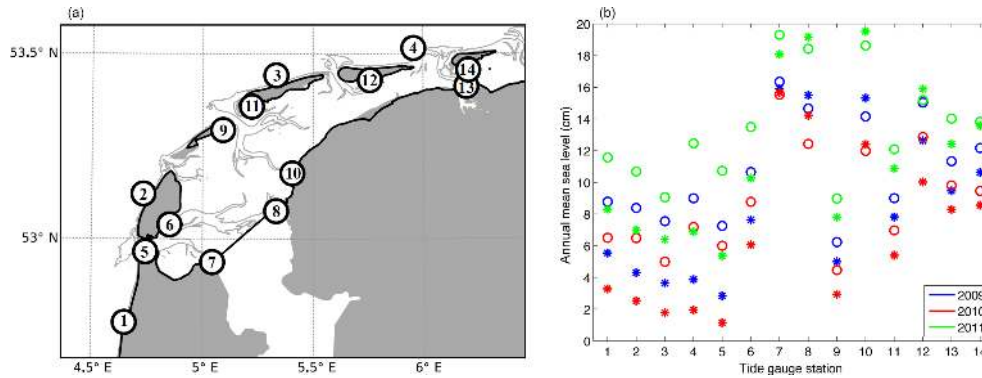


Figure 10. Annual mean sea level for the years 2009–2011: comparison between model results (asterisks) and observations (circles) for fourteen tide gauges in and around the Dutch Wadden Sea, whose positions are indicated in the map on the left.

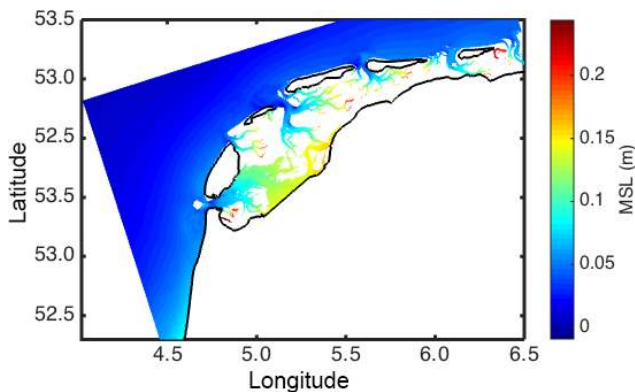


Figure 11. Model result: the 3-year mean sea level for the years 2009–2011. Intertidal areas, which fall dry part of the time, are left out and rendered white.

Duran-Matute et al. (2014) and Gräwe et al. (2016). In this section we explore how well the model captures the interannual variability and we identify spatial patterns (the data are available at Gerkema and Duran-Matute, 2017). Data are used from the tide gauges shown in Fig. 10a. To facilitate comparison with the model, we will use the datum of NAP (Normaal Amsterdams Peil), which follows approximately the geoid, i.e., the equipotential of the gravity field. Water depth and bathymetry, both in observations and model, are taken with respect to this reference. In the model, however, the equipotential is represented by a plane surface.

Apart from an offset, the model captures the interannual variability well (Fig. 10b). The offset between modeled and observed values is for each station nearly constant through the years, but it differs between stations. On average, the offset is 2.1 cm, which may be due to a slight imprecision in the open boundary conditions.

Both in observations and model results, it is remarkable how strong the spatial variability is in each year, with persistently higher levels around stations 7, 8, and 10. This is further highlighted in Fig. 11, a spatial plot of the 3-year

mean sea level for the period of the model run, 2009–2011. Clearly, stations 7, 8, and 10 form part of a wider area of higher mean sea levels. The location is consistent with our findings in Sect. 3.4 that the sensitivity of mean sea level to winds in the west–east direction is strongest at Harlingen (station 10), as represented by the coefficient C_{WE} in Table 2. This points to the wind as being a principal factor in the spatial variability of annual mean sea level in Fig. 11. It is not that the wind itself would vary much over this small region but rather the local sensitivity of annual mean sea level to a given wind climate. In the case of this inter-tidal area, it is plausible that this spatial variation in sensitivity is mainly determined by the morphology of the basin. Due to the predominantly southwesterly/westerly winds (see Fig. 4a), a mean wind setup is created at eastward boundaries. Accordingly, the setup at watersheds is generally higher at the western side than at the eastern side. More evidence of the role of the wind in the spatial variability comes from the study by Duran-Matute et al. (2016), where on tidal timescales a qualitatively similar spatial response was seen for (south)westerly winds.

Besides the wind, freshwater sources may play a role. Although we found no significant improvement in the results by adding an overall measure of freshwater discharge (as discussed below, in Sect. 5.4), it is conceivable that there are local effects, in particular in this case, since stations 7 and 8 lie at sluices. Future model studies (e.g., with and without freshwater discharge) could shed light on the significance of a local discharge.

Finally, we note that inter-tidal areas offer a special challenge to determining annual mean sea level. Water level at inter-tidal flats is strongly biased to high tide, since at low tides the flats fall dry. As the phases of low tide are effectively non-existent on the inter-tidal flats, annual mean values of sea level would always come out too high (and indeed artificially high) in comparison with adjacent gullies. For this reason, we have left out inter-tidal areas in Fig. 11 and rendered them white.

5 Discussion

5.1 Optimizing multiple regression

In the previous section, we presented a way to correct for atmospheric pressure and wind effects, resulting in a corrected signal whose trend we can determine. Alternatively, we can obtain the trend directly from multiple regression by including time (in years) as an additional independent variable, along with the wind components and pressure. This results in the values listed in brackets in Table 2. They are in fact close to those already obtained; for deriving trends, it is immaterial which procedure is followed. On the other hand, the root-mean-square errors are generally reduced by including the trend in the multiple regression, especially in the case of Harlingen, which is not surprising since the trend is strongest there.

5.2 Possible asymmetries in the wind effect

In the analysis in this paper, we considered the vectorial sum of the wind energy as an explanatory factor for annual mean sea level. This means that energy from westerly and easterly winds are lumped together (i.e., subtracted) as if they carry equal weight. However, it is important to keep in mind that this serves only as a first-order approach, since in reality the relationship will be more asymmetric. In the case of the Dutch Wadden Sea, an easterly wind has less fetch and can drain off only a limited amount of water (because of the shallowness of the basin) compared to westerly winds, which have a longer fetch and carry a larger potential for heightening sea level, with waters coming from the large reservoir of the North Sea. A weighting factor is thus likely to be involved, but this will not be examined further in this paper.

5.3 Effect of extreme surges on annual mean sea level

An important question is whether the annual mean sea level is mainly controlled by a few extreme surges during heavy storms, or rather reflects the aggregate of all the contributions of the various conditions throughout the year. This determines whether storm surges ride, as it were, on top of a background mean sea level or, instead, they shape that very level.

To answer this question, we consider a 20-year record of the tide gauge at Den Helder (period 1996–2015, as elsewhere in this paper), with data at 10 min intervals (using publicly available data from the Dutch governmental agency Rijkswaterstaat). As a reference we take the datum NAP. During this period, mean high tide was +59 cm, and mean low tide –80 cm. The highest level in this record is +271 cm.

We here define “extreme surges” as levels exceeding mean high tide plus 100 cm, i.e., higher than +159 cm. With this criterion, we place the bar rather low for an event to be counted as “extreme” (this level falls in the official category “low storm surge”). Nevertheless, the combined effect

of all these “extreme” events contributes on average still only +0.34 cm to the annual mean sea level, and in none of the years more than +1.0 cm.

Since the interannual variability of annual mean sea level lies rather on the order of several centimeters up to a few decimeters (see Fig. 2), it is clear that these variations cannot be ascribed to the incidence of extreme events; instead, they must be primarily controlled by the more typical conditions that prevail in a certain year. Although intense, the extreme events last too short to leave a fingerprint on the annual mean level.

Conversely, however, there are indications that changes in mean sea level can result in a change in extremes (both in terms of level and frequency), as pointed out by Woodworth et al. (2011).

5.4 Other effects

Another possible cause of variability is the 18.6-year lunar nodal cycle. This cycle has two distinct effects. On the one hand, it modulates the amplitude (and phase) of the lunar constituents, notably the principal semidiurnal lunar constituent M2 and lunar declinational diurnal constituents K1 and O1. This has a very significant effect on the tidal range and on the diurnal inequality, but it leaves the annual mean sea level unaffected since high waters are as much higher as low waters are lower, canceling out in the mean. On the other hand, there is a small long-period nodal constituent N, which has no effect on the tidal range but does have a signature in annual mean sea level. Exactly how important this effect is still appears to be a matter of debate. According to Pugh (2004), the amplitude is about 4.4 mm around Europe. Baart et al. (2012) included a nodal oscillation in their fit to annual mean sea level at the Dutch coast (combining six tide gauge stations). They find an amplitude of 1.2 cm, with the maximum occurring in February 2005. However, our results, after correction for atmospheric effects show no maximum at that time. Moreover, as Woodworth (2012) emphasized, the 18.6-year cycle cannot really be distinguished from decadal variability in short records (like ours), while the cycle will hardly affect trends in long ones; hence Woodworth parenthetically suggests “just forgetting it for many midlatitude coastlines” – which is what we have done in this paper.

On the decadal timescale, variability in land water storage (due to ENSO) has been found to have a fingerprint in annual mean sea level, with a lowering during La Niña events, such as in 2007–2009 (Woodworth et al., 2011). This, however, is not clearly visible in our corrected annual mean sea levels (Fig. 9).

A factor of unknown significance is the outflow of freshwater and its interannual and regional variability. The results from Sect. 4 suggest it plays at least a role in the spatial variability in annual mean sea level. A preliminary investigation including the river Rhine discharge (as a proxy we took the discharge at Lobith, where it enters the Netherlands be-

fore splitting into different branches using publicly available data from the Dutch governmental agency Rijkswaterstaat) gave no substantial improvement in the multiple regression analysis, confirming a similar conclusion by de Ronde et al. (2014).

5.5 Comparison with reanalysis data

In this study, we have used an observed meteorological record from Vlieland weather station (Fig. 1). An alternative is to use reanalysis data. Here we compare the two. We use ECMWF ERA-Interim reanalysis data (Dee et al., 2011), which include wind and atmospheric pressure at 6 h intervals. We examine the same time span as in previous sections, 1996–2015. From a grid corresponding to the effective model resolution, we select a point that lies in the North Sea; the location is indicated by a star in Fig. 1 (a more southern point, which is strictly closer to Vlieland, actually produces a worse result because of its being sheltered by the coast on the east).

The overall 20-year levels of wind energy give a qualitatively similar distribution over the sectors as in Fig. 4a for the observed record. For individual sectors, the reanalysis data differ as follows: -12% (N), $+24\%$ (NE), -2% (E), $+43\%$ (SE), $+1\%$ (S), $+7\%$ (SW), -2% (W), and $+36\%$ (NW). For the dominant directions, SW and W, the difference is relatively small.

All the steps from previous sections can be repeated, but now using the reanalysis data, leading to another reconstruction of annual mean sea level, shown as the green line in Fig. 8. The reconstruction is slightly less good than the one based on the observed record (shown in red). For the reanalysis data, we find a root-mean-square error of 1.51, against 1.16 when using the observed record.

6 Conclusions

We find that at the Dutch coast, southwesterly winds are dominant in the wind climate (Fig. 4a), but west–east directions stand out as having the highest correlation with annual mean sea level (Fig. 6). For different stations in the Dutch Wadden Sea and along the coast, we find a qualitatively similar pattern, although the precise values of the correlations vary. The interannual variability of mean sea level can already be largely explained by the west–east component of the net wind energy vector, with some further improvement if one also includes the south–north component and annual mean atmospheric pressure. Knowledge of these local correlations can then be used to correct annual mean sea for these atmospheric effects and thereby reduce the margin of error in the trend.

We showed that a modest reduction in the margin of error of trends in mean sea level rise can be obtained by selecting the summer half-year instead of the full year because of lower wind-induced variability. However, these summer trends are not representative of the annual mean trends, in

agreement with earlier findings by Dangendorf et al. (2013). For all stations studied here, we find from 100-year long records a steeper rise in the winter half-year than in summer half-year values of mean sea level. This is an apparently overlooked but relevant feature in view of coastal protection, since severe storms are more common during the winter half-year.

This study implies that climatic changes in the dominant wind direction or in the strength of winds from any specific sector may affect the annual mean sea level quite significantly. For the Netherlands, no trend in wind strength has been found for reconstructed wind fields in the 20th century (calculated as geostrophic winds from atmospheric pressure records, KNMI, 1999), but to date, no study seems to have been carried out for possible trends in individual wind sectors. Climate studies tend to focus on extreme events such as the frequency of severe storms and maximum wind speed (see, e.g., de Winter et al., 2013) rather than on the annual mean wind energy for different wind sectors.

Such changes in wind climate may affect locations differently; as this study shows, some places have a higher correlation with winds in the west–east (or south–north) direction than others (see Table 2). This sensitivity to wind direction has a regional variability, as is suggested by the model result in Fig. 11 and supported on shorter timescales by the modeling study by Duran-Matute et al. (2016). Even on a small scale like the Dutch Wadden Sea, there is a spatial variability in the response of the annual mean sea level to changes in the wind climate.

Data availability. Publicly available wind and atmospheric pressure records were used from the KNMI (Royal Netherlands Meteorological Institute) for the weather stations Vlieland (no. 242) and Hoorn Terschelling (no. 251), which the KNMI provides at <http://projects.knmi.nl/klimatologie/uurgegevens>.

Publicly available monthly mean sea level data for tide gauge stations at the Dutch coast were used, which the PSMSL (Permanent Service for Mean Sea Level) provides at www.psmsl.org.

Sea level data at 10 min resolution of the tide gauge at Den Helder (1996–2015) are publicly available and provided by the Dutch governmental agency Rijkswaterstaat via the portal <http://live.waterbase.nl>. Here, the data of the Rhine discharge at Lobith are also provided.

Publicly available atmospheric reanalysis data were used (ERA-Interim), which the ECMWF provides via the portal <http://apps.ecmwf.int/datasets/>.

The model data for mean sea level in the Dutch Wadden Sea (2009–2011) used in Figs. 10 and 11 can be found at <https://doi.org/10.4121/uuid:115ef6c5-8c58-4905-91f5-537985fb3b6f> (Gerkema and Duran-Matute, 2017).

Competing interests. The authors declare that they have no conflict of interest.

Acknowledgements. We thank Thomas Frederikse (TU Delft) and Vincent Vuik (HKV) for bringing several relevant papers and reports to our attention, as well as Andreas Sterl (KNMI) for advice and help on the usage of reanalysis data.

Edited by: Yun Liu

Reviewed by: three anonymous referees

References

- Baart, F., van Gelder, P. H. A. J. M., de Ronde, J., van Koningsveld, M., and Wouters, B.: The Effect of the 18.6-Year Lunar Nodal Cycle on Regional Sea-Level Rise Estimates, *J. Coastal Res.*, 28, 511–516, 2012.
- Baart, F., Leander, R., de Ronde, J. G., de Vries, H., Vuik, V., and Nicolai, R.: Zeespiegelmonitor 2014, Rekenmethode voor huidige en toekomstige zeespiegelstijging, Deltares Report 1209426-000-VEB-0011, 2014 (in Dutch).
- Dangendorf, S., Muddersbach, C., Wahl, T., and Jensen, J.: Characteristics of intra-, inter-annual and decadal sea-level variability and the role of meteorological forcing: the long record of Cuxhaven, *Ocean Dynam.*, 63, 209–224, <https://doi.org/10.1007/s10236-013-0598-0>, 2013.
- Dangendorf, S., Calafat, F. M., Arns, A., Wahl, T., Haigh, I. D., and Jensen, J.: Mean sea level variability in the North Sea: Processes and implications, *J. Geophys. Res.*, 119, 6820–6841, <https://doi.org/10.1002/2014JC009901>, 2014.
- Dangendorf, S., Marcos, M., Müller, A., Zorita, E., Riva, R., Berk, K., and Jensen, J.: Detecting anthropogenic footprints in sea level rise, *Nat. Commun.*, 6, 7849, <https://doi.org/10.1038/ncomms8849>, 2015.
- de Ronde, J. G., Baart, F., Katsman, C. A., and Vuik, V.: Zeespiegelmonitor, Deltares report 1208712-000-ZKS-0010, 2014 (in Dutch).
- de Winter, R. C., Sterl, A., and Ruessink, B. G.: Wind extremes in the North Sea Basin under climate change: An ensemble study of 12 CMIP5 GCMs, *J. Geophys. Res.-Atmos.*, 118, 1601–1612, <https://doi.org/10.1002/jgrd.50147>, 2013.
- Dee, D. P., Uppala, S. M., Simmons, A. J., Berrisford, P., Poli, P., Kobayashi, S., Andrae, U., Balmaseda, M. A., Balsamo, G., Bauer, P., Bechtold, P., Beljaars, A. C. M., van de Berg, L., Bidlot, J., Bormann, N., Delsol, C., Dragani, R., Fuentes, M., Geer, A. J., Haimberger, L., Healy, S. B., Hersbach, H., Hólm, E. V., Isaksen, I., Kållberg, P., Köhler, M., Matricardi, M., McNally, A. P., Monge-Sanz, B. M., Morcrette, J.-J., Park, B.-K., Peubey, C., de Rosnay, P., Tavolato, C., Thépaut, J.-N., and Vitart, F.: The ERA-Interim reanalysis: configuration and performance of the data assimilation system, *Q. J. Roy. Meteor. Soc.*, 137, 553–597, <https://doi.org/10.1002/qj.828>, 2011.
- Douglas, B. C.: Global sea level rise, *J. Geophys. Res.*, 96, 6981–6992, 1991.
- Duran-Matute, M., Gerkema, T., de Boer, G. J., Nauw, J. J., and Gräwe, U.: Residual circulation and freshwater transport in the Dutch Wadden Sea: a numerical modelling study, *Ocean Sci.*, 10, 611–632, <https://doi.org/10.5194/os-10-611-2014>, 2014.
- Duran-Matute, M., Gerkema, T., and Sassi, M. G.: Quantifying the residual volume transport through a multiple-inlet system in response to wind forcing: The case of the western Dutch Wadden Sea, *J. Geophys. Res.*, 121, 8888–8903, <https://doi.org/10.1002/2016JC011807>, 2016.
- FitzGerald, D. M., Fenster, M. S., Argow, B. A., and Buynevich, I. V.: Coastal Impacts Due to Sea-Level Rise, *Annu. Rev. Earth Planet. Sci.*, 36, 601–647, <https://doi.org/10.1146/annurev.earth.35.031306.140139>, 2008.
- Frederikse, T., Riva, R., Slobbe, C., Broerse, T., and Verlaan, M.: Estimating decadal variability in sea level from tide gauge records: An application to the North Sea, *J. Geophys. Res.*, 121, 1529–1545, <https://doi.org/10.1002/2015JC011174>, 2016.
- Gerkema, T. and Duran-Matute, M.: Annual mean sea-level in the Dutch Wadden Sea 2009–2011, <https://doi.org/10.4121/uuid:115ef6c5-8c58-4905-91f5-537985fb3b6f>, 2017.
- Gräwe, U., Flöser, G., Gerkema, T., Duran-Matute, M., Badewien, T., Schulz, E., and Burchard, H.: A numerical model for the entire Wadden Sea: skill assessment and analysis of hydrodynamics, *J. Geophys. Res.*, 121, 5231–5251, <https://doi.org/10.1002/2016JC011655>, 2016.
- Guan, C. and Xie, L.: On the Linear Parameterization of Drag Coefficient over Sea Surface, *J. Phys. Oceanogr.*, 34, 2847–2851, 2004.
- KNMI: De toestand van het klimaat in Nederland 1999 (The state of the climate in the Netherlands), report Koninklijk Nederlands Meteorologisch Instituut, 1999 (in Dutch).
- Lee, T. and McPhaden, M. J.: Decadal phase change in large-scale sea level and winds in the Indo-Pacific region at the end of the 20th century, *Geophys. Res. Lett.*, 35, L01605, <https://doi.org/10.1029/2007GL032419>, 2008.
- Merrifield, M. A. and Maltrud, M. E.: Regional sea level trends due to a Pacific trade wind intensification, *Geophys. Res. Lett.*, 38, L21605, <https://doi.org/10.1029/2011GL049576>, 2011.
- Montgomery, D. and Runger, G.: Applied statistics and probability for engineers, Wiley, 3rd edn., 2003.
- Pugh, D. T.: Changing sea levels: effects of tides, weather and climate, Cambridge University Press, 2004.
- Richter, K., Nilsen, J. E. O., and Drange, H.: Contributions to sea level variability along the Norwegian coast for 1960–2010, *J. Geophys. Res.*, 117, C05038, <https://doi.org/10.1029/2011JC007826>, 2012.
- Santer, B. D., Wigley, T. M. L., Boyle, J. S., Gaffen, D. J., Hnilo, J. J., Nychka, D., Parker, D. E., and Taylor, K. E.: Statistical significance of trends and trend differences in layer-average atmospheric temperature time series, *J. Geophys. Res.*, 105, 7337–7356, 2000.
- Sprent, P.: Applied nonparametric statistical methods, Chapman & Hall, 2nd edn., 1993.
- Stammer, D., Cazenave, A., Ponte, R. M., and Tamisiea, M. E.: Causes of contemporary regional sea level changes, *Annu. Rev. Mar. Sci.*, 5, 21–46, <https://doi.org/10.1146/annurev-marine-121211-172406>, 2013.
- Verkaik, J. W.: Documentatie windmetingen in Nederland (Documentation of wind records in the Netherlands), report KNMI, 2001 (in Dutch).
- Wahl, T., Haigh, I. D., Woodworth, P. L., Albrecht, F., Dillingh, D., Jensen, J., Nicholls, R. J., Weisse, R., and Wöppelmann, G.: Observed mean sea level changes around the North Sea coastline from 1800 to present, *Earth-Sci. Rev.*, 124, 51–67, <https://doi.org/10.1016/j.earscirev.2013.05.003>, 2013.

- Woodworth, P. L.: A Note on the Nodal Tide in Sea Level Records, *J. Coastal Res.*, 28, 316–323, 2012.
- Woodworth, P. L. and Player, R.: The Permanent Service for Mean Sea Level: An update to the 21st century, *J. Coastal Res.*, 19, 287–295, 2003.
- Woodworth, P. L., Gehrels, W. R., and Nerem, R.: Nineteenth and twentieth century changes in sea level, *Oceanography*, 24, 80–93, <https://doi.org/10.5670/oceanog.2011.29>, 2011.
- Zervas, C.: Sea level variations of the United States 1854–2006, NOAA Technical Report NOS CO-OPS 053, 2009.
- Zijl, F., Verlaan, M., and Gerritsen, H.: Improved water-level forecasting for the Northwest European Shelf and North Sea through direct modelling of tide, surge and non-linear interaction, *Ocean Dynam.*, 63, 823–847, <https://doi.org/10.1007/s10236-013-0624-2>, 2013.