



# EUI WORKING PAPERS IN ECONOMICS

EUI Working Paper ECO No. 95/34

**International Business Cycles and the ERM:  
Is there a European Business Cycle?**

M.J. ARTIS  
and  
W. ZHANG

P 330  
UR

European University Institute, Florence

EUROPEAN UNIVERSITY INSTITUTE



3 0001 0022 0684 7



© The Author(s). European University Institute.

Digitised version produced by the EUI Library in 2020. Available Open Access on Cadmus, European University Institute Research Repository.

**EUROPEAN UNIVERSITY INSTITUTE, FLORENCE**

**ECONOMICS DEPARTMENT**

EUI Working Paper ECO No. 95/34

**International Business Cycles and the ERM:  
Is there a European Business Cycle?**

M.J. ARTIS  
and  
W. ZHANG

WP  
330  
EUR



**BADIA FIESOLANA, SAN DOMENICO (FI)**

**All rights reserved.  
No part of this paper may be reproduced in any form  
without permission of the authors.**

**© M.J. Artis and W. Zhang  
Printed in Italy in October 1995  
European University Institute  
Badia Fiesolana  
I - 50016 San Domenico (FI)  
Italy**

## **International Business Cycles and the ERM: Is There a European Business Cycle?**

By M.J.Artis\* and W. Zhang\*\*

\* European University Institute and CEPR

\*\* European University Institute

June 1995

### **Abstract**

Successful fixed exchange rate systems impose policy disciplines which are likely to lead to conformity in the business cycles of the participating countries. This conjecture is borne out in the present paper by the evidence adduced in it that the business cycle affiliation of ERM member countries has shifted from the United States to Germany since the formation of the ERM. This effect is bolstered by growing links in trade and finance between the European countries. The United Kingdom is conspicuous among these in that its business cycle affiliation did not change.

JEL Classification: E32

Keywords: business cycle, ERM

We should like to thank the OECD for supplying the data used in this study. Financial support derived from a Leverhulme Foundation grant administered by the CEPR, is gratefully acknowledged.



## Introduction

The purpose of this paper is to investigate the effects of the Exchange-Rate Mechanism (ERM) of the European Monetary System (EMS) on the international business cycle in terms of the linkage and synchronization of cyclical fluctuation between countries. More specifically, by using the US cycle and the German cycle as two bench-mark cycles and the pre-ERM period and the ERM period as two subperiods, and by dividing the sample of 12 countries into two groups - the ERM-group and non-ERM group - the paper attempts to examine whether systematic differences in business cycle behaviour within the two groups of countries across the two period can be observed. The inclusion of the non-ERM countries enables us to distinguish ERM-specific phenomena from the general development of the international business cycle and thus allows us to establish whether there is a "European" business cycle.

The investigation of linkage in business cycles and the way in which economic disturbances are transmitted across countries has a long history. Earlier literature includes the paper by Mitchell (1927) who found that the correlation of business cycles across countries was positive and tended to rise over time due to the openness of financial markets. Recent contributions to this literature, particularly those that investigate the question whether the transmission of foreign economic shocks depends on the exchange rate regime, include papers by Gerlach (1988), Baxter and Stockman (1989), and Ahmed *et al* (1993), among others. Dividing exchange rate experience into fixed and floating rate regimes, identified respectively with the Bretton Woods period and after, these studies examine whether the international business cycle has changed between the two periods.<sup>1</sup>

Gerlach (1988) examines the cross-correlations of monthly industrial production series under the two regimes (1963:2-1973:2 and 1973:3-1986:3) and finds that the variances of monthly growth rates are typically higher in the flexible exchange rate period; but output movements have been correlated across countries under both regimes. He also suggests that there is evidence of a world business cycle.

Baxter and Stockman (1989) use the industrial production data of a sample of 49 countries

---

1. Because the adoption of an exchange regime is itself endogenous, and because the widespread abandonment of the Bretton Woods system coincided with the first oil shock, Baxter and Stockman (1989) additionally examine two other episodes of change in exchange rate regime where the problem of two-way causation is less acute.

to compare the behaviour of business cycles under the two exchange rate regimes (1960:1-1970:4 and 1973:1-1985:4). They find little evidence of systematic differences in the behaviour of macroeconomic aggregates. They also find that the cross correlations decrease in the flexible rate period and argue that business cycles became more country-specific in the post-1973 period.

Ahmed *et al* (1993) use a structural macroeconometric model to study the source of international economic fluctuations. Apart from other results, they find that the interactions between output, relative prices, and the ratios of fiscal and monetary variables in the United States and the rest of the world were much the same in the pre-1973 fixed-exchange-rate period as in the post-1973 flexible-exchange-rate period. Thus they argue that there is no evidence of differences in the transmission properties of economic disturbances across exchange-rate regimes.

In this paper we take the ERM countries as constituting a fixed exchange rate bloc. The ERM has been characterised as a hegemonic system centred on Germany as the anchor country. In such a case, standard economic theory makes it clear that in choosing to target its exchange rate against the currency of a dominant country with which trade and financial links are probably in any case important, a small open economy will be obliged to import the disturbances hitting the dominant country and will indeed be using its policy instruments to enforce this (for a theoretical characterization, see Canzoneri, 1982). Of course this does not rule out that the country may also import shocks from elsewhere or experience its own idiosyncratic shocks; moreover, referring now specifically to the case of ERM membership, it must be noted that whilst Germany is considerably the largest economy in the ERM, the economies of France and Italy (respectively, the fourth and fifth largest in the G-7 ranking) are hardly "small". Moreover, the ERM has contained a number of "escape" clauses. Exchange rates have not been rigidly fixed but have fluctuated within a band; central parity realignments have occurred; and, up to the late 1980s, member countries could buy a degree of freedom by deploying exchange controls on capital flows. Nevertheless the hypothesis that the formation of the ERM may have bred a "European business cycle" centred on Germany is worth exploring. Indeed, the synchronization of business cycles in the ERM may have become one of the key conditions for the efficient coordination of monetary policy in Europe, as noted for example by Christodoulakis *et al.* (1995) in their recent study of this



matter<sup>2</sup>. However, where these authors analyse and compare the cyclical behaviour of a large number of aggregate variables for the EC countries over the period 1960-1990, the focus of our own study is on the change over time in the business cycle affiliation of the set of ERM countries. The papers by Karras (1994) and by Fiorito and Kollintzas (1994) are also complementary to the concerns of the present study. The former paper is concerned with the sources of business cycle fluctuations in the economies of France, Germany and the UK over the period 1960-1988; the latter tests real business cycle propositions on the data for the G-7 countries.

The paper reports some statistical regularities in business cycles for a sample of 12 countries. It appears that 1) the degree of linkage between business cycles within the ERM has strengthened and that business cycle phases have become more synchronous through time; 2) the linkages in business cycles between the ERM countries and the US have weakened during the ERM period; 3) these phenomena do not occur for the non-ERM countries.

The paper contains five sections. The first section gives a brief description of the two most commonly used detrending methods: the phase-average-trend (PAT) method and the filter proposed by Hodrick and Prescott (1980). In sections 2 to 5, we report evidence for the ERM countries in terms of the synchronization, the phase shift and the linkage between their business cycles. This evidence is provided on the basis of comparisons made across countries and across periods employing data derived using the PAT method. The robustness of the results for alternative detrending methods is also assessed. The paper is completed by a summary of the main results and conclusions.

### 1. Detrending Methods

The data used in the current study are the OECD seasonally adjusted figures on monthly industrial production spanning the period from January 1961 to December 1993<sup>3</sup> for a sample of 12 countries. They are the US, Canada, Japan, the UK, Germany, France, Italy, Netherlands, Belgium, Spain, Portugal and Ireland. The whole period is divided into two

---

2. It is arguable that it was because the business cycle in the UK was insufficiently "European" that the UK was obliged to leave the ERM in 1992; the delinking of the British from the German business cycles is cited in Artis *et al* (1995) in this connection.

3. The series for Portugal runs from January 1968 to October 1993.

subperiods: the pre-ERM period (1961:1-1979:3) and the ERM period (1979:4-1993:12). Since the main purpose of the paper is to investigate the ERM effect on the international business cycle, most ERM countries are included<sup>4</sup>. While the US cycle serves as the benchmark cycle, the inclusion of data for other non-ERM countries such as Canada, Japan and the UK, helps us to distinguish ERM-specific phenomena from general tendencies in the business cycle.

The definition of the business cycle employed in the current paper is that of the growth cycle, representing cyclical movements around the long-run growth trend of an economy. The decomposition of observed series into a trend movement and cyclical component is one of the key issues in business cycle research. The central issue is what is meant by the cyclical component and how to choose the appropriate filter to use to isolate it. Statistical properties, such as the cross-correlation between two series, will be sensitive to the filter chosen. In this paper we simply adopt the position assumed by Englund *et al* (1992) that as we are agnostic about the proper way to do such detrending, a reasonable way to proceed is to use several of the more commonly used filters in business cycle research and to conduct a sensitivity analysis over the results. The three most widely used techniques are the phase-average-trend estimation procedure proposed by Boschan and Ebanks (1978), the filter proposed by Hodrick and Prescott (1980) and linear trending (a special case of the HP filter).

The phase-average-trend (PAT) estimation procedure provides a fairly flexible growth trend that is substantially free of the shorter-term cyclical movements in the series. This method was designed specifically to separate long-term trends from medium-term cycles, with the latter defined according to the criteria programmed in the Bry-Boschan computer routine for selecting cyclical turning points. Briefly, the basic steps in the PAT procedure involve 1) selecting the turning points using the Bry and Boschan (1971) routine; 2) splitting the series into phases, defined as the number of months between successive turning points; 3) calculating the phase-average, defined as the means of the observations in each phase; 4) computing a three-term moving average by using these phase-averages; and, 5) finally, obtaining the trend. A detailed description of the PAT procedure can be found in Boschan

---

4. For reference purposes we label as ERM countries all those which are now in the ERM together with Italy. This includes both the original members and the latecomers, Spain (which joined in June 1989) and Portugal (which joined only in April 1992) and excludes the UK (which joined in October 1990 but left in September 1992). Italy was an original member of the ERM but left in September 1992. Denmark is excluded for data reasons (the available series is too short).

and Ebanks (1978). The principal statements of results in the text are obtained by using the cyclical series supplied by the OECD, which employs a modified version of the PAT procedure (see Nilsson (1987)).

The Hodrick-Prescott filter (HP filter) decomposes the raw series into a stochastic growth component and a cyclical one. The HP filter can be specified as:

$$\min_{g_t} \sum_{t=1}^N (y_t - g_t)^2 + \lambda \sum_{t=2}^{N-1} [(g_{t+1} - g_t) - (g_t - g_{t-1})]^2$$

where  $y_t$  denotes the raw series,  $g_t$  the growth component and  $(y_t - g_t)$  the cyclical component. The first part measures the fitness and the second is a measure of smoothness. The parameter,  $\lambda$ , interpreted as the signal-to-noise ratio, determines the weight of fitness relative to that of smoothness. As  $\lambda$  goes to infinity the HP filter collapses to a linear trend. For quarterly data, Hodrick and Prescott (1980) set  $\lambda=1600$ , arguing that a 5% deviation from trend per quarter is moderately large as it represents one-eighth of a one percent change in the growth rate in a quarter.

These methods are widely used and easy to implement; they are, however, not free from criticism. For the PAT procedure, the estimation of peaks and troughs is a crucial step, since the method first splits the series into phases which are defined as the number of months between successive turning points. The Bry-Boschan routine specifies a minimum duration of five months for a phase and fifteen months for a cycle. The rules adopted may be sensitive to the turning points selected, particularly for those called 'minor turning points'. Although there is no need to define the turning points in the HP filter, the filter may seriously alter the measures of comovements between series (see, for example, King and Rebelo (1993)). Nevertheless, the robustness /sensitivity of the results from different filters is assessed in a formal way in the current paper and there is no evidence that the main conclusions are sensitive to the choice of filter.

All the cyclical components used in our paper are measured by a cyclical index:  $1.0 + (X_t - \text{trend}_t) / \text{trend}_t$ , where  $X_t$  is the raw series. Figures 1 and 2 graph the US and French business cycles, in which these components are detrended by the filters discussed above. At the top of each figure is the series detrended by the OECD using the modified PAT procedure. In the middle, there are two cyclical indices detrended by the HP filter when  $\lambda=500000$  and  $\lambda=50000$  respectively. The large values for  $\lambda$  may be justified on two grounds: 1) that

Figure 1. The US Business Cycle

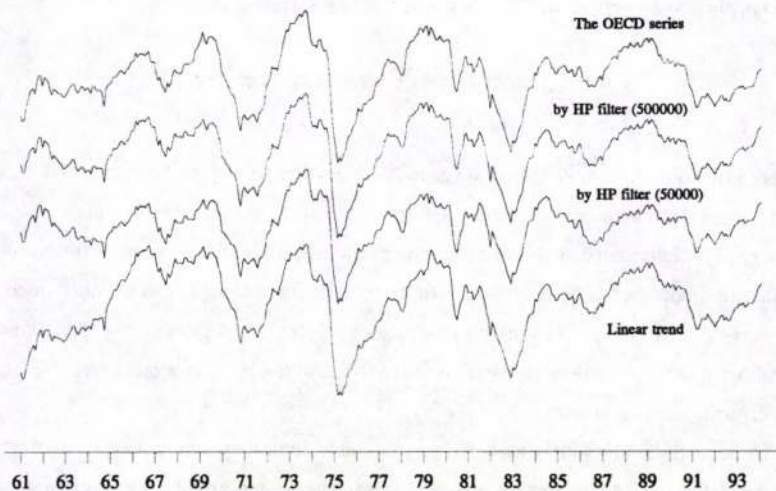
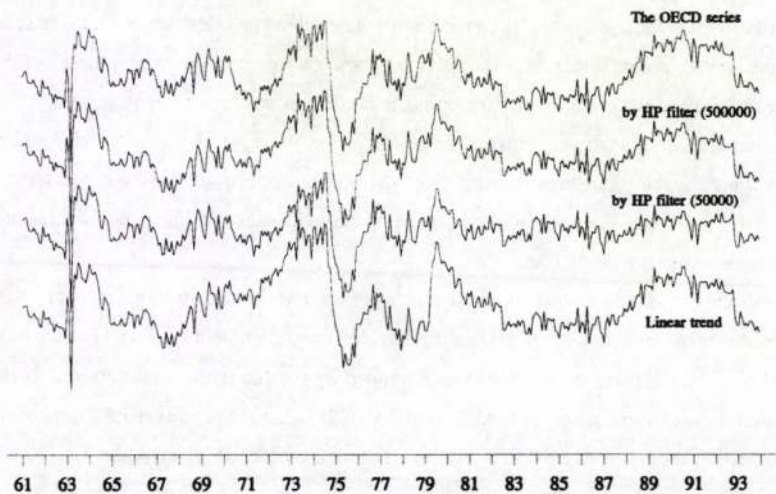


Figure 2. The French Business Cycle



monthly industrial production is a volatile series; 2) that the trend of industrial production can be assumed to be basically upwards. Finally, we also graph the cyclical components derived as deviations from a linear trend. Since the growth rates of industrial production in almost all the industrial countries slowed down during the '80s and '90s, a separate linear trend is applied to the different periods (the pre-ERM and the ERM period). The four series have very similar cyclical movements; in particular, the OECD series and the series detrended by HP filter( $\lambda=500000$ ) are very similar. A noticeable dissimilarity may also be observed for the series detrended by the HP filter( $\lambda=50000$ ), particularly for the French cycle during the later part of the period. The correlations across countries, across periods and across different detrending methods are reported in Tables A1 to A4 in the Appendix. The statistics reported in these tables provide basic information on three features. The degree of synchronization between any two cycles is measured by the contemporaneous cross-correlation. The phase shift is measured by the lead /lag at which the maximum correlation is obtained, while the maximum correlation is used to measure the degree of linkage between two cycles. These three aspects are closely related. However, for convenience, they will be discussed separately in the following sections.

## 2. Synchronization

A general finding is that the business cycles in the major countries have become more synchronized as a result of increased international trade, openness of financial markets and global capital flows (see, for example, Zarnowitz (1985)); however, Baxter and Stockman (1989) have on the contrary observed decreases in the contemporaneous cross correlation of business cycles and argue that business cycles have become more country-specific in the post-1973 period.

The degree of synchronization between two cycles is measured by the cross-correlation at displacement 0. An excerpt from the full set of results reported in appendix Tables A1 to A4 is given in Table 1. This table reports with a + (-) sign whether the correlation with the German cycle is larger (smaller) than that with the US cycle for a given detrending method. For example, for the series detrended by the OECD, the France-Germany correlation (0.53) is smaller than the France-US correlation (0.67) during the pre-ERM period and this is indicated by the negative sign (-). It is immediately clear that there is very little difference in the signs attached to the comparisons as between the different detrending methods

employed and for convenience we may now concentrate on the results achieved using the OECD-adjusted series. Thus Figures 3 and 4 show for this method, respectively, the cross-correlations with the German and the US cycles before and after the creation of the ERM. By construction, observations close to the diagonal indicate a similar degree of synchronization with both benchmark cycles (the higher, the further to the NE the observation is located), whilst displacement from the diagonal can be interpreted as a difference of synchronization between the two benchmark cycles. There are a number of interesting regularities which may be described as follows:

Table 1. Contemporaneous Cross-Correlation

	Detrended by OECD		HP filter ( $\lambda=500000$ )		HP filter ( $\lambda=50000$ )		Linear trend	
	US	Germany	US	Germany	US	Germany	US	Germany
<b>Pre-ERM period</b>								
Germany	.45	--	.30	--	.44	--	.19	--
Canada	.85	.48 (-)	.80	.34 (-)	.86	.50 (-)	.73	.37 (-)
Japan	.45	.49 (+)	.29	.57 (+)	.54	.52 (-)	.17	.73 (+)
UK	.70	.63 (-)	.64	.53 (-)	.61	.58 (-)	.72	.49 (-)
France	.67	.53 (-)	.46	.58 (+)	.57	.55 (-)	.29	.68 (+)
Italy	.34	.08 (-)	.41	.07 (-)	.39	.15 (-)	.48	.18 (-)
Netherlands	.29	.76 (+)	.05	.62 (+)	.30	.62 (+)	-.02	.73 (+)
Belgium	.62	.66 (+)	.43	.64 (+)	.59	.66 (+)	.31	.72 (+)
Spain	.63	.38 (-)	.47	.33 (-)	.63	.38 (-)	-.12	.37 (+)
Portugal	.53	.47 (-)	.60	.33 (-)	.59	.28 (-)	.55	.33 (-)
Ireland	.58	.48 (-)	.50	.47 (-)	.54	.38 (-)	.03	.33 (-)
<b>ERM period</b>								
Germany	.32	--	.25	--	.16	--	.34	--
Canada	.90	.24 (-)	.93	.20 (-)	.91	.17 (-)	.91	.21 (-)
Japan	.46	.72 (+)	.35	.78 (+)	.41	.62 (+)	.44	.73 (+)
UK	.65	.36 (-)	.58	.28 (-)	.34	.08 (-)	.69	.44 (-)
France	.34	.78 (+)	.38	.77 (+)	.32	.59 (+)	.41	.85 (+)
Italy	.48	.65 (+)	.41	.57 (+)	.31	.33 (+)	.47	.67 (+)
Netherlands	.54	.78 (+)	.49	.74 (+)	.39	.59 (+)	.59	.82 (+)
Belgium	.44	.73 (+)	.34	.70 (+)	.22	.50 (+)	.45	.79 (+)
Spain	.39	.59 (+)	.28	.51 (+)	.12	.24 (+)	.43	.58 (+)
Portugal	.07	.57 (+)	-.13	.53 (+)	-.22	.29 (+)	-.01	.55 (+)
Ireland	.38	.40 (+)	.49	.31 (-)	.50	.17 (-)	.37	.58 (+)

*In the pre-ERM period:* With the exception of Canada, Netherlands and Italy, all the countries are located near or slightly below the 45° line in Figure 3, suggesting that business cycles in these countries are in phase slightly more often with the US cycle than with the

Figure 3. Correlation in the Pre-ERM Period

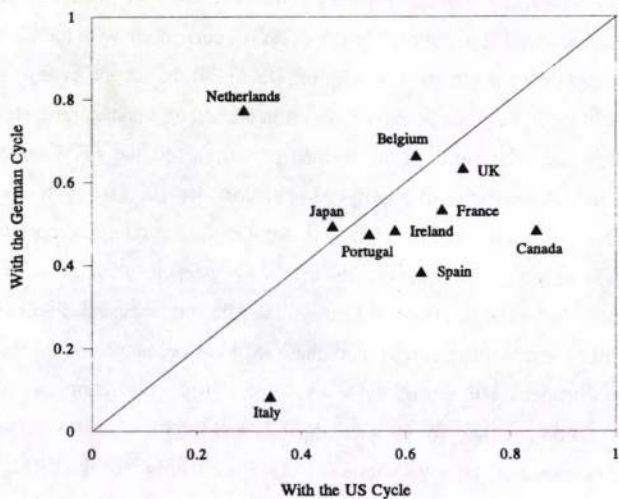
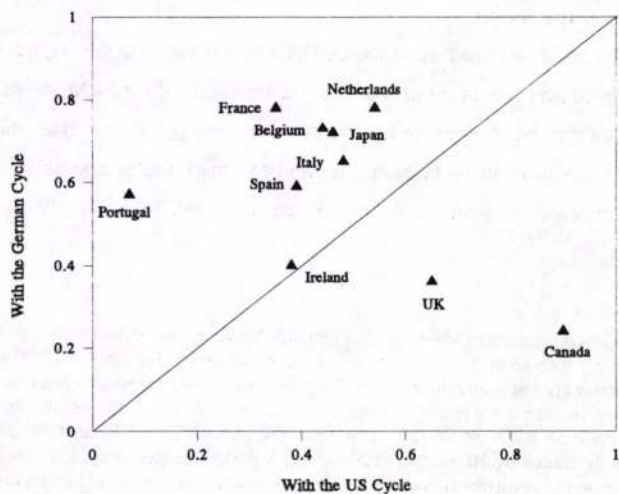


Figure 4. Correlation in the ERM Period



German cycle. A high degree of synchronization in the Canada-US cycles (0.85) and Netherlands-Germany cycles (0.77) is shown in Figure 3 by the displacement from the diagonal in the different directions of these two observations. This is not surprising given that the two pairs of economies have traditionally been closely linked over time. The least degree of synchronization indicated is that for the Italian cycle: its correlation with the German cycle (0.08) is the lowest in the sample and that with the US (0.34) the second lowest, suggesting that the business cycle in Italy in the earlier period had a strong idiosyncratic element.

*In the ERM period:* The shift, in this second period, of all the ERM countries to a position above the diagonal may exemplify a systematic change. The cycles in all these countries have become more synchronized with the German cycle. The correlations are moreover comparatively high: for example, the France-German correlation is 0.78 compared to 0.34 for France-USA. The locations of Canada, the UK and Ireland in Figure 4 are also of interest, for they suggest that a comparable phase shift has not happened for these cycles. They are still synchronous with the US cycle and in fact, these correlations are quite stable across the period: 0.85 and 0.90 for Canada-US, 0.71 and 0.65 for UK-US during the pre-ERM and ERM periods respectively. Although Ireland is a member of the ERM, a clearcut shift in phase with the US has not been found. On the contrary, the Japanese cycle is in phase more often with the German cycle than with the US one in the latter period.<sup>5</sup>

## 2.1 Sensitivity of the results

The predominant result obtained using the OECD-adjusted data, suggesting the emergence of a European business cycle in the period since the formation of the ERM, is not dependent on the detrending method chosen. Here we demonstrate, using a  $\chi^2$  test, that when the sign of the change in the correlations between the two benchmark cycles is considered, there is no significant difference between the detrending methods used. Formally, the methods used

---

5. The Irish industrial production series shows a definite change in smoothness before and after 1975: the series is very smooth in the pre 1975 period and becomes volatile after 1975. This is because monthly figures were not available in the earlier period and were interpolated from quarterly data. The correlation in the earlier period is certainly overestimated. For both periods, the Ireland-US correlations are 0.58 and 0.38 for the series detrended by OECD; 0.50 and 0.49; 0.54 and 0.50 for the series detrended by HP with  $\lambda=500000$  and  $\lambda=50000$  respectively. If the overestimation of the correlation in the earlier period is taken into consideration, it is not clear that there has been any weakening in the degree of synchronization in the Ireland-US cycles in the later period.



can be described as involving a 2×2 contingency table organized as follows<sup>6</sup>:

		Detrending method B		
		Change in correlation (+)	Change in correlation (-)	
Detrending method A	Change in correlation (+)	n <sub>11</sub>	n <sub>12</sub>	n <sub>1.</sub>
	Change in correlation (-)	n <sub>21</sub>	n <sub>22</sub>	n <sub>2.</sub>
		n <sub>.1</sub>	n <sub>.2</sub>	N

where the change in correlation (+) /(-) is defined as before. The entry in cell(i,j), denoted n<sub>ij</sub>, represents the frequency of observation for the particular category. For example, n<sub>11</sub> is the number of observations where method A and method B record the same positive (+) sign; and n<sub>22</sub> where the two methods record the same negative (-) sign. n<sub>12</sub> and n<sub>21</sub> are observations where the two methods produce different signs (respectively, (+) and (-) or (-) and (+) for method A and B). Intuitively, the more n<sub>11</sub>+n<sub>22</sub> is observed, the more robust the results are across the two methods. The test statistic can be written as

$$\chi^2 = \sum_{i=1}^2 \sum_{j=1}^2 \frac{(n_{ij} - n_i n_j / N)^2}{n_i n_j / N}$$

where

$$n_i = \sum_j n_{ij} \quad N_j = \sum_i n_{ij}$$

and  $N = n_{1.} + n_{2.} = n_{.1} + n_{.2}$ . The two terms, n<sub>ij</sub> and n<sub>i</sub>n<sub>j</sub>/N, denote observed and expected frequencies respectively. This is a  $\chi^2$  test for independence. Not rejecting the null means that the results from the two methods are independent, otherwise the results are related. The number of observations which have the same /opposite change in correlations together with the significance level<sup>7</sup> are reported in Table 2, in which the OECD detrending method is treated as method A in the contingency table format.

6. Details can be found in Yates (1984).

7. The problem of small sample and of small expected frequencies can be relevant in our case. The significance levels for small n in the 2×2 contingency table may be found in Daniel (1978) and they are reported in Table 2.

Table 2. The Comparison I

	HP filter ( $\lambda=500000$ )	HP filter ( $\lambda=50000$ )	Linear trend
<b>Pre-ERM period</b>			
Same direction	9	9	8
Opposite direction	1	1	2
<b>ERM period</b>			
Same direction	9	9	10
Opposite direction	1	1	0
<b>Total</b>			
Same direction	18	18	18
Opposite direction	2	2	2
Significance level of the test	.005*	.005*	.005*

\* indicates significant at least at that level.

The hypothesis of independence is rejected in all cases, suggesting that the main patterns remain unchanged across filters. In fact, the conclusions, that the business cycles in the ERM countries become more synchronous with the German cycle, and less synchronised with the US cycle during the ERM period, are remarkably consistent across the different filters. These filters produce almost identical results in terms of change in correlation.

To summarise, the business cycles become more group-specific in the ERM period than before. It is in this sense that we may now be able to refer to a "European business cycle". The business cycles of the ERM countries become more synchronised in the ERM period, while this phenomenon has not occurred between the non-ERM countries and the US. For the reasons suggested earlier, this should not be surprising, given that disturbances and policy are transmitted more quickly through the channel of the exchange rate mechanism within the ERM countries. It is also suggested that the prediction that business cycles in the major countries are likely to be more synchronised due to the openness of financial markets may need further investigation. It is true that activities in the financial markets have become more highly integrated worldwide and that stock market indices are widely used as leading indicators of the real economy. However, the poor performance in predicting real economic activity and the wide range of the lead time between the leading indicators and the real business cycle do not suggest that the business cycles worldwide have become more

synchronised<sup>8</sup>.

#### 4. Lead /lag relationships

Contemporaneous correlation measures provide useful information for measuring the degree of synchronization between two cycles. Although we find evidence that systematic differences of synchronization in business cycles may have been occurred across periods, it is uncertain how the phases shift. We can provide an explicit measure of phase shift by finding the lead /lag at which the maximum correlation is obtained<sup>9</sup>. Table 3 gives these lead /lag relationships. Again we first focus on the results from the series detrended by the OECD and a number of interesting regularities are described as follows:

---

8. In predicting the latest troughs for the G-7 using a sequential probability model, Artis *et al* (1995) show that what is observed is the opposite: the leading indices became more synchronised worldwide, but the real business cycles have shifted in phase significantly. For example, the first trough calls for the US, Canada, UK, France and Italy emerge almost simultaneously and again the second trough call for Japan, Germany, France and Italy also emerges around same time. The latest troughs in the G-7, however, are at least two years and a half apart. It is also found in the paper that turning point prediction for the European countries has become more difficult than before and less accurate than for the non-European G-7 members. This may suggest that the behaviour of the business cycle in the 1980s and 90s has changed.

9. For a given pair of cycles, X and Y,  $\rho_{\pm i}(X_{i\pm}, Y_i)$  denotes the correlation between X and Y at displacement  $\pm i$  ( $i \leq 24$ ). In this paper, the maximum value of  $|\rho_{\pm i}|$  is chosen for  $i(i \leq 12)$ , and the range is extended up to 24 months ( $i \leq 24$ ) if the maximum correlation chosen has the same sign.

Table 3. Lead /Lag Relationship

	OECD series		HP filter ( $\lambda=500000$ )		HP filter ( $\lambda=50000$ )		Linear trend	
	US	Germany	US	Germany	US	Germany	US	Germany
	<b>Pre-ERM period</b>							
Germany	0		0		0		-2	
Canada	0	0	0	-1	0	-1	0	-1
Japan	-2	+1	-2	0	-1	0	-12	0
UK	-1	0	0	0	0	0	-1	0
France	0	0	0	0	0	0	-2	-2
Italy	-4	<b>+14</b>	-4	<b>+14</b>	0	<b>+15</b>	-4	<b>+24</b>
Netherlands	-2	0	<b>-16</b>	0	<b>-16</b>	0	<b>+19</b>	0
Belgium	-1	0	-1	-2	-1	0	-2	-2
Spain	-2	-5	-2	-5	-2	-5	<b>+20</b>	-8
Portugal	-2	-3	-4	-4	-4	-3	-4	-4
Ireland	0	+3	-2	+3	-2	+3	<b>+24</b>	+2
<b>ERM period</b>								
Germany	-8		-8		-7		-8	
Canada	+1	+13	0	+8	0	+7	0	+11
Japan	-7	+1	-7	+1	-4	+1	-7	+1
UK	0	+20	0	+22	0	+22	0	+18
France	-7	0	-3	0	-3	0	-4	0
Italy	-6	0	-6	0	-4	0	-8	0
Netherlands	-7	0	-5	0	-3	0	-5	0
Belgium	-3	0	-3	0	-3	0	-5	0
Spain	-18	+6	-18	+6	-22	+6	-18	+6
Portugal	-24	0	<b>-24</b>	0	<b>+4</b>	+3	-24	0
Ireland	-2	+6	-2	+8	-2	+19	-2	0

Note 1. The figures indicate the number of months that the business cycle in the US or Germany leads (-) /lags(+) the cycle in the other countries.

Note 2. When the German-US correlation is calculated, the '+' /'-' indicates the US cycle leads /lags the German cycle.

Note 3. Emboldened figures indicate a negative correlation.

*Pre-ERM period:* With the exception of Italy, the maximum correlations with the US cycle are located within a range of only two months; the range with respect to the German cycle is only slightly larger. This is clear evidence that the business cycles as a whole are in this period synchronous worldwide. One of the main reasons may be the incidence of the two oil shocks in this period: one in 1973 and the other in 1979. These shocks were international in character and spread across countries. On the other hand, one might expect that business cycles would become less synchronous in the absence of common shocks of this type.

*In the ERM period:* The business cycles in terms of their phases may be classified into groups: the ERM group and the non-ERM group. The cycles in the ERM group (with the exception of Ireland) are in phase with the German cycle and out of phase with the US cycle. In fact, the maximum correlations are located at exactly 0 displacement except for the case of Spain (+6); while the range with respect to the US cycle runs from -3 to -24 months. While the cycles in the ERM group are synchronous, there exist cycles, those in the US, Canada, the UK and perhaps Ireland, which represent another international business cycle. The US cycle always leads those cycles by -2 to +1 months both in the pre-ERM and ERM period. This phenomenon may be regarded as providing further support for the ERM effect on the business cycles - the ERM only affects the behaviour of business cycles in the ERM countries.

Another phenomenon we can observe is that the lead /lag relationship between the cycles in the ERM countries and the US cycle becomes unclear. This may be viewed in Table 4, which reproduces a part of Table A1. Table 4 provides information for the ERM period on the cross-correlation at different leads and lags between the ERM countries cycles and the two benchmark cycles. The distribution of correlations with the US cycle in the ERM period has a "thick tail" which suggests that the US cycle may lead the ERM cycles by much longer than the figures indicated in Table 3 which were based only on the maximum correlation. For example, the US cycle leads the French cycle by -7 months at which the maximum correlation is obtained, but the actual lead time could range from -3 to -24 months within which the correlations have a very similar level. This phenomenon exists for all the ERM countries except Ireland, but does not occur for the cycles between Germany and the rest of the ERM countries.

Table 4 Cross-Correlation at the Different Leads /Lags

	Leads / Lags						
	-24	-18	-12	-9	-6	-3	0
<b>ERM Period</b>							
Germany-US	.40	.45	.46	.48	.46	.41	.32
France-US	.41	.40	.40	.41	.41	.41	.34
France-Germany	.10	.20	.38	.49	.59	.69	.78
Italy-US	.42	.52	.62	.65	.66	.62	.48
Italy-Germany	-.01	.12	.30	.42	.52	.59	.65
Netherlands-US	.28	.43	.54	.61	.62	.62	.54
Netherlands-Germany	-.17	-.01	.27	.41	.54	.67	.78
Belgium-US	.26	.32	.39	.45	.50	.51	.44
Belgium-Germany	-.28	-.20	.01	.21	.39	.57	.73
Spain-US	.38	.45	.43	.42	.40	.41	.39
Spain-Germany	-.19	-.09	.10	.21	.33	.47	.59
Portugal-US	.44	.42	.34	.27	.21	.14	.07
Portugal-Germany	-.25	-.16	.03	.19	.32	.46	.57
Ireland-US	-.01	.00	.05	.17	.30	.38	.38
Ireland-Germany	.06	.09	.15	.19	.24	.32	.40

Baxter and Stockman (1989) observe that business cycles in the post-1973 period have been more country-specific and argue that this is because the source of shock may have changed whilst government policies may have differed in a way that affects the international character of business cycles. Gerlach (1988) suggests there is evidence of a world business cycle. Our findings are "mid-way" between these views in that we find that the business cycle has become more group-specific, with disparities emerging between the groups rather than within them - or at least, not within the "European" (ERM) group, where disparities have narrowed considerably. Of course, our observation period is somewhat different from that employed in these earlier studies, benefitting in particular from the inclusion of observations drawn from the period of the "hard ERM" and the idiosyncratic German shock associated with that country's unification and the associated fiscal and monetary policies.

### 5. Maximum correlation

Despite the fact that the phase in business cycles has been shifted across periods, it is uncertain whether the linkages of the business cycles have been changed. The linkage

between the two cycles is measured by the maximum cross-correlation coefficients, which are reported in Tables A1 to A4 and reorganized in Table 5. Again, a graphical view of these correlations lends clarity to their interpretation. Figures 5 and 6 thus show maximum correlations with each of the two benchmark cycles across the subperiods. It is worth noting that comparisons provided in Tables 5 and 6 are across the subperiods and not across the two benchmark cycles, so that the impact of common shocks occurring in the earlier period may be isolated. Some interesting patterns may be observed and they are categorized into the following three groups: the group near, below and above the 45° line.

*Canada, the UK and Germany:* These countries are located near the diagonal in Figure 5 and this indicates that there is no evidence of systematic differences across periods. The correlations of the Canadian cycle with the US one are the highest and the UK correlations are almost the second highest in both periods. The German-US correlations in the pre-ERM period and during the ERM period are very similar, suggesting in that sense that the regularities in the two cycles may not have changed significantly between the two periods; on the other hand, for both periods they are quite low, indicating a relatively high degree of independence in each cycle.

Table 5. Maximum Cross-Correlation

	Detrended by OECD		HP filter ( $\lambda=500000$ )		HP filter ( $\lambda=50000$ )		Linear trend	
	Pre- ERM	ERM	Pre- ERM	ERM	Pre- ERM	ERM	Pre- ERM	ERM
<b>With the US cycle</b>								
Canada	.85	.90 (+)	.80	.93 (+)	.86	.91 (+)	.73	.91 (+)
Japan	.48	.60 (+)	.30	.51 (+)	.54	.56 (+)	.31	.59 (+)
UK	.71	.65 (-)	.64	.58 (-)	.61	.34 (-)	.73	.69 (-)
Germany	.45	.48 (+)	.30	.42 (+)	.44	.30 (-)	.19	.50 (+)
France	.67	.42 (-)	.46	.45 (-)	.57	.37 (-)	.30	.49 (+)
Italy	.34	.67 (+)	.41	.60 (+)	.39	.46 (+)	.49	.67 (+)
Netherlands	.31	.62 (+)	-.50	.58 (+)	-.48	.49 (+)	-.44	.66 (+)
Belgium	.63	.51 (-)	.44	.42 (-)	.60	.31 (-)	.32	.52 (+)
Spain	.66	.45 (-)	.50	.37 (-)	.66	.15 (-)	-.60	.48 (+)
Portugal	.56	.44 (-)	.65	.42 (-)	.64	-.29 (-)	.59	.47 (-)
Ireland	.58	.38 (-)	.51	.50 (-)	.55	.52 (-)	-.46	.37 (+)
<b>With the German cycle</b>								
US	.45	.48 (+)	.30	.48 (+)	.44	.30 (-)	.19	.50 (+)
Canada	.48	.49 (+)	.35	.42 (+)	.50	.36 (-)	.38	.45 (+)
Japan	.49	.73 (+)	.57	.78 (+)	.52	.65 (+)	.73	.74 (+)
UK	.63	.65 (+)	.53	.59 (+)	.58	.48 (-)	.49	.62 (+)
France	.53	.78 (+)	.58	.77 (+)	.55	.59 (+)	.68	.85 (+)
Italy	-.20	.65 (+)	-.20	.57 (+)	-.27	.33 (+)	.30	.67 (+)
Netherlands	.77	.78 (+)	.62	.74 (+)	.62	.59 (-)	.73	.82 (+)
Belgium	.66	.73 (+)	.65	.70 (+)	.66	.50 (-)	.73	.79 (+)
Spain	.46	.63 (+)	.45	.54 (+)	.50	.27 (-)	.48	.62 (+)
Portugal	.49	.57 (+)	.39	.53 (+)	.32	.30 (-)	.38	.55 (+)
Ireland	.51	.43 (-)	.49	.36 (-)	.40	.33 (-)	.34	.58 (+)

*Japan and Italy:* The business cycles in Japan and Italy increase their linkages not only with the US, but with the German cycle as well. The observations for these two countries lie well above the diagonal in both Figures.

*The ERM countries:* With the exception of the Netherlands and Italy, they are grouped below the diagonal in Figure 5 and above it in Figure 6. The average correlation with the US is around 0.65 in the pre-ERM period, but falls to around 0.45 during the latter period. Linkages with the German cycle are strengthened though time - the correlations with the German cycle are significantly higher in the ERM period than before. This phenomenon is not observed for the non-ERM countries, suggesting that there is evidence of the ERM effect



Figure 5. Correlation with the US Cycle

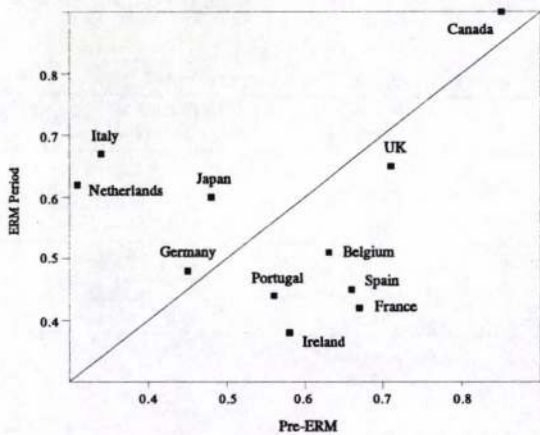
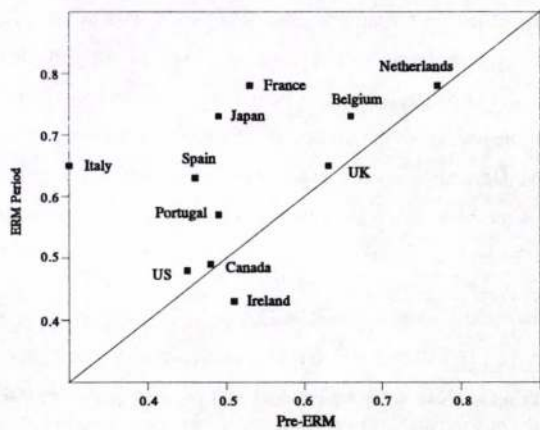


Figure 6. Correlation with the German Cycle



on the business cycles: the business cycles not only become more synchronous, but more closely linked within the ERM countries during the ERM period.

A comparison made across the filters in Table 6 shows that the PAT procedure and the HP filter ( $\lambda=500000$ ) produce identical results. The results from the PAT and the HP ( $\lambda=50000$ ) are associated at least at the 0.03 significance level, whilst the significance level of the association between the PAT procedure and linear trend is slightly above the 0.05 level of significance.

Table 6. The Comparison II

	HP filter ( $\lambda=500000$ )	HP filter ( $\lambda=50000$ )	Linear trend
<b>With the US cycle</b>			
Same direction	11	10	7
Opposite direction	0	1	4
<b>With the German cycle</b>			
Same direction	10	4	9
Opposite direction	0	6	1
<b>Total</b>			
Same direction	21	14	16
Opposite direction	0	7	5
Significance level of the test	.001*	.030*	.050*

\*' significant at least at that level; '+' not significant at that level.

Whilst there seems to be good evidence that the linkages of the ERM countries with the German cycle strengthened considerably in the ERM period, it is important also to note that the character of the cycle changed for Germany - and thus for the economies linked to it - as well in this period. In particular, in this period the cycle becomes less clear-cut (where there is no comparable change in the cyclicity of the North American economies); it is in this period that the German economy experiences its longest upswings since 1960 (the average duration of the two upswings in the ERM period rises to 45 months from the 33 months average in the preceding two decades) whilst the difference in growth rates between the upturn and downturn phases of the cycle falls<sup>10</sup>.

10. These observations are drawn from Artis *et al* (1995) and are based on the OECD cyclical data series used in the present study. In the earlier paper the focus was on cyclical predictability. The changes described were among the factors that made it less easy to predict the cycle in the 1980s than in earlier periods.

## 6. Conclusions

How far is an exchange rate regime likely to affect the character of economic fluctuations in the participating economies? Standard international monetary economics suggests that a successful nominal exchange rate peg will entail the transmission of shocks from one economy to another; the peg removes a means of buffering external shocks and may require policy measures to be taken which have precisely the effect of facilitating the import of such shocks. In a hegemonic system this suggests that the smaller economies may be exposed to the business cycle generated in the leader country, whilst both may suffer from common shocks generated elsewhere. These insights underlie the literature on optimum currency areas, and have been much in evidence in the debate over the putative formation of the European Monetary Union (e.g see Tavlas (1993)).

Despite the theoretical presumption, tests of the effect of exchange rate regimes on the character of economic fluctuations have not hitherto been entirely supportive of it - perhaps partly because of the identification problem involved in the sample separation required and partly because of the difficulties that are involved in controlling for other factors that would affect the nature of economic fluctuations. These must include factors such as trade and financial integration, increases in which are generally held to predispose in favour of the emergence of linkage between countries in the evolution of their business cycles, independently of the exchange rate regime.

In this paper we examine the question whether the formation of the functioning of the Exchange Rate Mechanism (ERM) of the European Monetary System has produced a strengthening of the linkages between the participating economies, resulting in a dilution of the effect of the US business cycle on these economies in favour of a stronger effect from the business cycle of Germany. Our data period starts in 1961 and expires at the end of 1993; the series employed are monthly data for industrial production and three different methods of detrending to isolate a (growth-) cyclical component are employed. Whilst the results are shown to be insensitive to the filtering method selected our presentation relies heavily on the use of the OECD-adjusted data, where the adjustment is a version of the phase-average-trend (PAT) method used by the NBER. Dividing the sample period between a pre- and a post-ERM period, and relying upon standard measures such as contemporaneous and maximum cross correlations, it is clearly observable that the synchronicity and linkage between the ERM economies and Germany has grown strongly between the two periods

whilst the linkages with the US cycle have diminished for these countries. The UK, a member of the ERM only for a short period (October 1990 - August 1992), is shown not to have significantly changed its "business cycle affiliation" - possibly a partial explanation of its withdrawal from the ERM. Ireland, also, is a partial exception to the general rule. However, in the main, the data rather clearly indicate the emergence of a group-specific "European" cycle in the ERM period, somewhat independent of the US cycle. The nominal exchange rate peg of the ERM agreement and the degree to which these arrangements were credible in the period examined appear to be the obvious candidate for the explanation - although, of course, the adherence to the ERM arrangements has been accompanied by a growth in linkages in trade and finance between the ERM countries. This growth in turn can be characterized as at least partly independent of ERM membership (certainly so, in the case of Spain and Portugal which only joined the ERM comparatively late in the sample period) and it would have had reinforcing effects.

### **Appendix. Cross-correlations**

In Table A1 to A4, the cross-correlations at different leads /lags from the series detrended by the OECD, the HP filters and linear trend are reported. These statistics are the correlation coefficients of the cycle in each country with the two benchmark cycles at the leads /lags indicated. The emboldened figures are the contemporaneous correlations. The lead (-) /lag(+) means that the cycle in the benchmark country (the US or Germany) leads /lags the cycle in other country. For example, in Table A1, in the pre-ERM period, the France-US contemporaneous correlation is 0.67; and becomes -0.43 when the US cycle leads the French cycle by 24 months. When the Germany-US correlation is calculated the US cycle serves as a benchmark cycle.

Table A1 Cross-Correlations for the Series Detrended by OECD

	Leads / Lags												
	-24	-18	-12	-9	-6	-3	0	3	6	9	12	18	24
<b>Pre-ERM period</b>													
Germany-US	-.38	-.24	.02	.17	.30	.41	<b>.45</b>	.40	.26	.09	-.06	-.29	-.35
Canada-US	-.45	-.25	.12	.37	.60	.77	<b>.85</b>	.74	.54	.29	.03	-.40	-.65
Canada-Germany	-.34	-.33	-.07	.10	.28	.42	<b>.48</b>	.44	.31	.14	-.02	-.33	-.47
Japan-US	-.28	-.05	.22	.34	.43	.47	<b>.45</b>	.36	.20	.01	-.18	-.40	-.46
Japan-Germany	-.35	-.39	-.14	.04	.22	.39	<b>.49</b>	.49	.43	.30	.16	-.07	-.16
UK-US	-.43	-.10	.28	.47	.60	.69	<b>.70</b>	.57	.38	.16	.02	-.30	-.50
UK-Germany	-.49	-.33	-.05	.16	.38	.55	<b>.63</b>	.56	.41	.26	.09	-.19	-.43
France-US	-.43	-.25	.08	.30	.49	.63	<b>.67</b>	.57	.34	.13	-.06	-.29	-.36
France-Germany	-.34	-.36	-.13	.06	.25	.45	<b>.53</b>	.51	.38	.25	.10	-.10	-.19
Italy-US	-.15	-.03	.17	.25	.30	.34	<b>.34</b>	.26	.10	-.09	-.19	-.31	-.22
Italy-Germany	-.05	-.09	-.07	-.02	.02	.07	<b>.08</b>	-.01	-.10	-.14	-.18	-.12	.14
Netherlands-US	-.20	-.13	.03	.13	.24	.31	<b>.29</b>	.18	-.01	-.16	-.26	-.32	-.21
Netherlands-Germany	-.45	-.25	.05	.30	.48	.65	<b>.76</b>	.63	.43	.25	.04	-.20	-.25
Belgium-US	-.38	-.15	.17	.35	.52	.61	<b>.62</b>	.47	.21	-.05	-.25	-.46	-.46
Belgium-Germany	-.40	-.30	.02	.24	.44	.62	<b>.66</b>	.58	.41	.22	.03	-.26	-.39
Spain-US	-.37	-.08	.36	.48	.58	.65	<b>.63</b>	.49	.22	-.06	-.28	-.46	-.46
Spain-Germany	-.30	-.10	.21	.33	.42	.44	<b>.38</b>	.25	.06	-.15	-.33	-.55	-.47
Portugal-US	-.45	-.17	.19	.37	.49	.56	<b>.53</b>	.49	.40	.26	.06	-.27	-.40
Portugal-Germany	-.18	-.01	.26	.32	.41	.49	<b>.47</b>	.41	.26	.13	-.04	-.32	-.46
Ireland-US	-.40	-.19	.09	.25	.42	.56	<b>.58</b>	.53	.41	.24	.09	-.21	-.41
Ireland-Germany	-.41	-.40	-.16	.02	.21	.40	<b>.48</b>	.50	.47	.35	.24	.00	-.12
<b>ERM Period</b>													
Germany-US	.40	.45	.46	.48	.46	.41	<b>.32</b>	.18	.03	-.10	-.21	-.28	-.32
Canada-US	-.18	.07	.33	.49	.65	.80	<b>.90</b>	.86	.74	.59	.43	.17	.01
Canada-Germany	-.45	-.37	-.27	-.17	-.05	.09	<b>.24</b>	.35	.44	.47	.48	.47	.46
Japan-US	.21	.36	.53	.59	.59	.57	<b>.46</b>	.30	.16	.03	-.08	-.24	-.33
Japan-Germany	-.42	-.34	-.04	.18	.40	.58	<b>.72</b>	.70	.67	.60	.50	.30	.07
UK-US	.11	.25	.35	.43	.51	.59	<b>.65</b>	.60	.53	.47	.38	.33	.14
UK-Germany	-.34	-.35	-.29	-.17	-.02	.16	<b>.36</b>	.43	.51	.57	.59	.64	.60
France-US	.41	.40	.40	.41	.41	.41	<b>.34</b>	.22	.09	-.04	-.16	-.24	-.36
France-Germany	.10	.20	.38	.49	.59	.69	<b>.78</b>	.71	.65	.55	.45	.31	.18
Italy-US	.42	.52	.62	.65	.66	.62	<b>.48</b>	.31	.18	.04	-.07	-.28	-.45
Italy-Germany	-.01	.12	.30	.42	.52	.59	<b>.65</b>	.62	.52	.44	.39	.29	.19
Netherlands-US	.28	.43	.54	.61	.62	.62	<b>.54</b>	.40	.25	.10	-.02	-.14	-.22
Netherlands-Germany	-.17	-.01	.27	.41	.54	.67	<b>.78</b>	.74	.69	.62	.53	.35	.21
Belgium-US	.26	.32	.39	.45	.50	.51	<b>.44</b>	.34	.21	.12	.02	-.06	-.19
Belgium-Germany	-.28	-.20	.01	.21	.39	.57	<b>.73</b>	.69	.62	.53	.44	.35	.24
Spain-US	.38	.45	.43	.42	.40	.41	<b>.39</b>	.32	.27	.21	.13	.00	-.16
Spain-Germany	-.19	-.09	.10	.21	.33	.47	<b>.59</b>	.60	.63	.59	.50	.44	.34
Portugal-US	.44	.42	.34	.27	.21	.14	<b>.07</b>	-.03	-.08	-.10	-.09	-.11	-.19
Portugal-Germany	-.25	-.16	.03	.19	.32	.46	<b>.57</b>	.55	.49	.41	.36	.22	.05
Ireland-US	-.01	.00	.05	.17	.30	.38	<b>.38</b>	.30	.19	.06	-.05	-.21	-.32
Ireland-Germany	.06	.09	.15	.19	.24	.32	<b>.40</b>	.43	.43	.40	.37	.35	.27

Table A2 Cross-Correlations for the Series Detrended by HP Filter ( $\lambda=500000$ )

	Leads / Lags												
	-24	-18	-12	-9	-6	-3	0	3	6	9	12	18	24
<b>Pre-ERM period</b>													
Germany-US	-.34	-.32	-.16	-.02	.12	.24	<b>.30</b>	.28	.18	.05	-.06	-.22	-.26
Canada-US	-.46	-.22	.15	.39	.60	.75	<b>.80</b>	.69	.50	.26	.02	-.37	-.60
Canada-Germany	-.13	-.16	.01	.12	.24	.33	<b>.34</b>	.26	.11	-.08	-.24	-.46	-.50
Japan-US	-.13	-.03	.13	.21	.26	.30	<b>.29</b>	.23	.11	-.04	-.20	-.41	-.47
Japan-Germany	-.15	-.09	.13	.26	.39	.51	<b>.57</b>	.53	.46	.34	.22	.05	-.02
UK-US	-.43	-.14	.19	.36	.50	.60	<b>.64</b>	.53	.36	.17	.06	-.22	-.43
UK-Germany	-.36	-.23	.01	.18	.36	.49	<b>.53</b>	.44	.28	.14	-.01	-.23	-.43
France-US	-.37	-.27	-.05	.13	.29	.41	<b>.46</b>	.39	.20	.04	-.09	-.25	-.30
France-Germany	-.09	-.08	.11	.26	.40	.55	<b>.58</b>	.52	.35	.19	.03	-.15	-.22
Italy-US	-.09	.04	.24	.33	.40	.41	<b>.41</b>	.31	.12	-.09	-.21	-.35	-.26
Italy-Germany	-.13	-.16	-.13	-.07	-.02	.05	<b>.07</b>	.00	-.10	-.14	-.19	-.11	-.17
Netherlands-US	.02	.07	.17	.15	.14	.12	<b>.05</b>	-.05	-.21	-.34	-.44	-.48	-.38
Netherlands-Germany	.01	.20	.39	.51	.56	.60	<b>.62</b>	.47	.31	.17	.01	-.14	-.20
Belgium-US	-.31	-.16	.07	.21	.36	.44	<b>.43</b>	.31	.09	-.12	-.27	-.40	-.37
Belgium-Germany	-.15	-.06	.20	.37	.52	.65	<b>.64</b>	.53	.35	.15	-.03	-.26	-.35
Spain-US	-.35	-.10	.27	.37	.45	.50	<b>.47</b>	.37	.15	-.08	-.28	-.46	-.48
Spain-Germany	-.05	.10	.33	.40	.44	.42	<b>.33</b>	.16	-.04	-.24	-.40	-.53	-.40
Portugal-US	-.40	-.08	.29	.48	.59	.64	<b>.60</b>	.54	.44	.27	.04	-.34	-.50
Portugal-Germany	.00	.15	.33	.34	.35	.38	<b>.33</b>	.28	.14	.03	-.11	-.31	-.37
Ireland-US	-.22	-.05	.18	.29	.40	.50	<b>.50</b>	.43	.28	.11	-.06	-.34	-.50
Ireland-Germany	-.30	-.24	-.02	.12	.27	.42	<b>.47</b>	.49	.45	.33	.22	.04	-.03
<b>ERM period</b>													
Germany-US	.34	.38	.39	.41	.40	.35	<b>.25</b>	.12	-.02	-.12	-.21	-.22	-.23
Canada-US	-.26	-.02	.24	.43	.63	.81	<b>.93</b>	.85	.68	.47	.23	-.05	-.19
Canada-Germany	-.30	-.24	-.20	-.15	-.06	.07	<b>.20</b>	.32	.39	.41	.39	.34	.31
Japan-US	.15	.25	.43	.50	.51	.48	<b>.35</b>	.17	.03	-.10	-.22	-.32	-.37
Japan-Germany	-.28	-.21	.08	.28	.49	.66	<b>.78</b>	.75	.71	.62	.51	.27	-.01
UK-US	.03	.13	.22	.31	.41	.50	<b>.58</b>	.52	.44	.37	.28	.29	.13
UK-Germany	-.22	-.28	-.29	-.22	-.08	.08	<b>.28</b>	.35	.43	.49	.51	.57	.55
France-US	.32	.33	.36	.40	.43	.45	<b>.38</b>	.25	.11	-.04	-.14	-.16	-.28
France-Germany	-.12	-.06	.14	.30	.46	.62	<b>.77</b>	.69	.62	.51	.41	.29	.17
Italy-US	.33	.42	.53	.58	.60	.56	<b>.41</b>	.23	.09	-.03	-.13	-.29	-.44
Italy-Germany	-.02	.08	.23	.35	.44	.51	<b>.57</b>	.52	.40	.31	.27	.19	.11
Netherlands-US	.18	.34	.46	.56	.58	.58	<b>.49</b>	.33	.16	.00	-.13	-.18	-.20
Netherlands-Germany	-.26	-.13	.17	.33	.46	.61	<b>.74</b>	.68	.62	.53	.42	.24	.10
Belgium-US	.20	.22	.28	.35	.41	.42	<b>.34</b>	.24	.12	.05	-.02	-.04	-.15
Belgium-Germany	-.22	-.15	.02	.21	.38	.54	<b>.70</b>	.65	.56	.46	.37	.31	.22
Spain-US	.32	.37	.30	.29	.26	.29	<b>.28</b>	.21	.15	.12	.07	-.02	-.17
Spain-Germany	-.20	-.15	.01	.12	.23	.39	<b>.51</b>	.51	.54	.48	.36	.31	.22
Portugal-US	.42	.34	.20	.12	.03	-.04	<b>-.13</b>	-.22	-.24	-.22	-.16	-.10	-.16
Portugal-Germany	-.13	-.05	0.12	.25	.34	.44	<b>.53</b>	.50	.43	.33	.28	.14	-.02
Ireland-US	-.15	-.09	.02	.19	.37	.48	<b>.49</b>	.40	.26	.10	-.02	-.21	-.31
Ireland-Germany	-.08	-.07	-.02	.02	.09	.20	<b>.31</b>	.35	.36	.32	.30	.31	.24

Table A3 Cross-Correlations for the Series Detrended by HP Filter ( $\lambda=50000$ )

	Leads / Lags												
	-24	-18	-12	-9	-6	-3	0	3	6	9	12	18	24
<b>Pre-ERM period</b>													
Germany-US	-.37	-.34	-.14	.03	.21	.36	<b>.44</b>	.40	.26	.09	-.07	-.27	-.31
Canada-US	-.44	-.25	.12	.38	.62	.79	<b>.86</b>	.74	.53	.26	-.01	-.43	-.65
Canada-Germany	-.33	-.34	-.08	.10	.29	.45	<b>.50</b>	.43	.26	.05	-.13	-.38	-.41
Japan-US	-.31	-.15	.14	.29	.41	.51	<b>.54</b>	.46	.29	.08	-.13	-.35	-.39
Japan-Germany	-.36	-.37	-.11	.08	.26	.43	<b>.52</b>	.49	.39	.23	.05	-.18	-.20
UK-US	-.41	-.15	.17	.34	.48	.57	<b>.61</b>	.48	.29	.10	.00	-.28	-.48
UK-Germany	-.42	-.28	-.03	.18	.39	.54	<b>.58</b>	.48	.30	.14	-.01	-.22	-.44
France-US	-.33	-.25	-.02	.18	.38	.52	<b>.57</b>	.49	.26	.06	-.09	-.26	-.29
France-Germany	-.33	-.35	-.11	.09	.29	.49	<b>.55</b>	.49	.31	.13	-.04	-.17	-.14
Italy-US	-.14	-.04	.17	.27	.36	.37	<b>.39</b>	.31	.11	-.11	-.22	-.34	-.18
Italy-Germany	-.16	-.18	-.12	-.04	.03	.12	<b>.15</b>	.05	-.09	-.15	-.23	-.19	.13
Netherlands-US	.00	.11	.31	.33	.35	.36	<b>.30</b>	.15	-.09	-.29	-.41	-.45	-.31
Netherlands-Germany	-.32	-.06	.21	.40	.49	.56	<b>.62</b>	.43	.21	.03	-.18	-.31	-.29
Belgium-US	-.30	-.15	.12	.29	.49	.59	<b>.59</b>	.43	.17	-.08	-.27	-.43	-.39
Belgium-Germany	-.42	-.34	-.01	.22	.43	.63	<b>.66</b>	.53	.32	.11	-.09	-.28	-.29
Spain-US	-.40	-.11	.36	.48	.58	.65	<b>.63</b>	.50	.22	-.08	-.29	-.44	-.43
Spain-Germany	-.30	-.07	.28	.39	.47	.47	<b>.38</b>	.21	-.02	-.24	-.43	-.55	-.36
Portugal-US	-.44	-.11	.27	.46	.58	.64	<b>.59</b>	.53	.44	.27	.03	-.33	-.43
Portugal-Germany	-.27	-.07	.18	.21	.26	.32	<b>.28</b>	.27	.14	.03	-.10	-.26	-.27
Ireland-US	-.26	-.09	.16	.27	.41	.54	<b>.54</b>	.47	.32	.12	-.04	-.31	-.47
Ireland-Germany	-.31	-.31	-.12	.03	.20	.35	<b>.38</b>	.40	.36	.20	.07	-.13	-.16
<b>ERM period</b>													
Germany-US	.19	.19	.21	.28	.30	.26	<b>.16</b>	.03	-.13	-.22	-.28	-.19	-.11
Canada-US	-.32	-.18	.04	.26	.51	.75	<b>.91</b>	.80	.53	.23	-.08	-.41	-.43
Canada-Germany	-.11	-.10	-.17	-.17	-.11	.03	<b>.17</b>	.30	.35	.31	.22	.08	.07
Japan-US	-.20	-.06	.28	.44	.52	.55	<b>.41</b>	.18	.01	-.13	-.25	-.31	-.31
Japan-Germany	-.37	-.39	-.13	.06	.30	.49	<b>.62</b>	.62	.61	.51	.39	.20	-.07
UK-US	-.09	-.02	-.02	.05	.14	.25	<b>.34</b>	.28	.19	.14	.08	.28	.23
UK-Germany	-.07	-.21	-.41	-.40	-.30	-.14	<b>.08</b>	.11	.18	.23	.24	.37	.44
France-US	.02	.00	.08	.19	.29	.37	<b>.32</b>	.20	.05	-.10	-.18	-.03	-.08
France-Germany	-.22	-.28	-.13	.02	.18	.38	<b>.59</b>	.46	.38	.27	.19	.20	.20
Italy-US	.02	.06	.24	.34	.44	.45	<b>.31</b>	.11	.00	-.09	-.13	-.22	-.33
Italy-Germany	-.04	.00	.07	.14	.21	.27	<b>.33</b>	.28	.08	-.02	-.02	.03	.01
Netherlands-US	-.01	.13	.28	.42	.47	.49	<b>.39</b>	.19	-.02	-.19	-.32	-.27	-.19
Netherlands-Germany	-.20	-.14	.12	.22	.31	.46	<b>.59</b>	.52	.42	.32	.17	.06	-.05
Belgium-US	-.01	-.02	.06	.16	.28	.31	<b>.22</b>	.13	.02	-.02	-.06	.04	-.02
Belgium-Germany	-.22	-.20	-.15	.01	.16	.33	<b>.50</b>	.44	.30	.19	.11	.19	.18
Spain-US	.11	.12	-.01	.00	-.02	.06	<b>.12</b>	.06	.05	.06	.06	.03	-.11
Spain-Germany	-.17	-.21	-.14	-.11	-.05	.13	<b>.24</b>	.22	.28	.20	.06	.12	.09
Portugal-US	.23	.13	.02	-.05	-.12	-.16	<b>-.22</b>	-.28	-.24	-.14	.00	.15	.06
Portugal-Germany	-.23	-.18	-.01	.09	.12	.20	<b>.29</b>	.30	.25	.16	.17	.14	.03
Ireland-US	-.32	-.23	-.09	.14	.36	.50	<b>.50</b>	.41	.27	.10	-.01	-.18	-.23
Ireland-Germany	-.22	-.23	-.20	-.17	-.10	.03	<b>.17</b>	.22	.26	.19	.20	.28	.28



Table A4 Cross-Correlations for the Linearly Trended Series

	Leads / Lags												
	-24	-18	-12	-9	-6	-3	0	3	6	9	12	18	24
<b>Pre-ERM period</b>													
Germany-US	.03	.00	.06	.11	.16	.19	<b>.19</b>	.15	.07	-.03	-.12	-.25	-.30
Canada-US	-.09	.07	.32	.47	.61	.70	<b>.73</b>	.63	.48	.30	.12	-.20	-.40
Canada-Germany	.03	.02	.15	.23	.31	.37	<b>.37</b>	.33	.22	.09	-.03	-.22	-.27
Japan-US	.29	.31	.32	.30	.28	.24	.17	.10	.01	-.11	-.23	-.40	-.48
Japan-Germany	.10	.21	.40	.51	.60	.68	<b>.73</b>	.71	.66	.58	.49	.34	.24
UK-US	-.01	.23	.48	.59	.67	.72	<b>.72</b>	.63	.49	.35	.25	.02	-.17
UK-Germany	-.27	-.14	.06	.21	.35	.45	<b>.49</b>	.46	.38	.30	.22	.07	-.06
France-US	-.09	-.05	.07	.16	.24	.29	<b>.29</b>	.22	.08	-.04	-.14	-.27	-.33
France-Germany	.18	.22	.37	.49	.58	.67	<b>.68</b>	.62	.50	.36	.23	.03	-.08
Italy-US	.16	.25	.39	.44	.48	.48	<b>.48</b>	.39	.23	.05	-.05	-.20	-.18
Italy-Germany	-.07	-.07	-.02	.04	.09	.16	<b>.18</b>	.15	.10	.08	.05	.09	.30
Netherlands-US	.38	.33	.29	.22	.15	.07	<b>-.02</b>	-.11	-.21	-.30	-.37	-.44	-.43
Netherlands-Germany	.34	.49	.62	.69	.72	.73	<b>.73</b>	.64	.54	.45	.34	.19	.07
Belgium-US	-.02	.05	.17	.24	.31	.32	<b>.31</b>	.21	.05	-.09	-.21	-.33	-.34
Belgium-Germany	.14	.24	.43	.56	.65	.73	<b>.72</b>	.63	.50	.35	.20	-.01	-.14
Spain-US	-.07	-.03	.07	.04	.01	-.04	<b>-.12</b>	-.16	-.27	-.40	-.50	-.59	-.57
Spain-Germany	.23	.32	.44	.47	.47	.44	<b>.37</b>	.22	.07	-.09	-.22	-.35	-.34
Portugal-US	-.39	-.09	.25	.42	.54	.58	<b>.55</b>	.50	.41	.25	.05	-.29	-.43
Portugal-Germany	.06	.20	.34	.35	.36	.38	<b>.33</b>	.28	.17	.06	-.05	-.20	-.26
Ireland-US	-.19	-.11	-.03	.01	.05	.07	<b>.03</b>	.01	-.05	-.15	-.24	-.39	-.46
Ireland-Germany	-.21	-.15	.00	.09	.20	.29	<b>.33</b>	.33	.31	.23	.16	.05	.00
<b>ERM period</b>													
Germany-US	.44	.48	.48	.49	.48	.42	<b>.34</b>	.19	.04	-.08	-.19	-.26	-.33
Canada-US	-.19	.07	.33	.50	.66	.81	<b>.91</b>	.86	.73	.57	.39	.15	.00
Canada-Germany	-.51	-.43	-.32	-.22	-.09	.06	<b>.21</b>	.32	.40	.44	.45	.45	.45
Japan-US	.25	.37	.52	.58	.58	.56	<b>.44</b>	.29	.16	.05	-.06	-.20	-.28
Japan-Germany	-.34	-.24	.06	.25	.45	.61	<b>.73</b>	.73	.72	.67	.59	.42	.20
UK-US	.13	.26	.37	.46	.55	.63	<b>.69</b>	.62	.53	.45	.34	.29	.09
UK-Germany	-.32	-.31	-.22	-.10	.06	.24	<b>.44</b>	.50	.56	.60	.60	.62	.57
France-US	.43	.45	.46	.48	.48	.48	<b>.41</b>	.27	.12	-.04	-.16	-.24	-.39
France-Germany	.06	.17	.37	.50	.63	.75	<b>.85</b>	.78	.71	.61	.50	.35	.19
Italy-US	.44	.53	.63	.66	.67	.62	<b>.47</b>	.30	.17	.04	-.07	-.26	-.42
Italy-Germany	-.01	.14	.33	.45	.55	.62	<b>.67</b>	.64	.55	.48	.44	.34	.24
Netherlands-US	.29	.45	.56	.64	.66	.66	<b>.59</b>	.43	.26	.10	-.04	-.15	-.26
Netherlands-Germany	-.18	-.02	.26	.42	.55	.70	<b>.82</b>	.78	.72	.65	.55	.37	.21
Belgium-US	.32	.36	.43	.48	.52	.52	<b>.45</b>	.34	.21	.11	.01	-.07	-.22
Belgium-Germany	-.15	-.05	.15	.33	.49	.65	<b>.79</b>	.75	.68	.60	.51	.41	.28
Spain-US	.38	.48	.46	.46	.44	.45	<b>.43</b>	.35	.27	.21	.13	.00	-.17
Spain-Germany	-.28	-.18	.02	.16	.29	.45	<b>.58</b>	.59	.62	.57	.49	.43	.33
Portugal-US	.47	.42	.30	.23	.15	.08	<b>-.01</b>	-.10	-.14	-.14	-.11	-.11	-.17
Portugal-Germany	-.14	-.05	.12	.26	.36	.46	<b>.55</b>	.54	.49	.42	.37	.25	.10
Ireland-US	.12	.13	.16	.23	.31	.37	<b>.37</b>	.25	.12	-.03	-.17	-.30	-.45
Ireland-Germany	.29	.35	.41	.43	.47	.52	<b>.58</b>	.54	.48	.39	.29	.16	.02

## References

- Ahmed, S., B.W.Ickes, P.Wang and B.S.Yoo, 1993, International business cycles, *The American Economic Review*, Vol. 83, no. 3, 335-359.
- Artis, M.J., R.C.Bladen-Hovell and W.Zhang, 1995, Turning points in the international business cycle: An analysis of the OECD leading indicators for the G-7 countries", *OECD Economic Studies* (forthcoming).
- Baxter, M., and A.C.Stockman, 1989, Business cycles and the exchange-rate regimes, *Journal of Monetary Economics*, 23, 377-400.
- Boschan, C., and W.W.Ebanks, 1978, The phase-average-trend: A new way of measuring growth, in *Proceedings of the Business and Economic Statistics Section*, Washington, D.C.: American Statistical Association.
- Bry, G., and C.Boschan, 1971, *Cyclical analysis of time series: Selected procedures and computer programs*, New York: Columbia University Press.
- Canzoneri, M., 1982, Exchange intervention policy in a multi-country world, *Journal of International Economics*, 13, 267-289.
- Christodoulakis, N., Dimelis, S.P. and T. Kollintzas, 1995, Comparisons of business cycles in the EC: Idiosyncracies and regularities, *Economica*, 62, 1-27.
- Daniel, W.W., 1978, *Applied Nonparametric Statistics*, London: Houghton Mifflin Company.
- Englund, P., T.Persson and E.O.Svensson, 1992, Swedish business cycles, *Journal of Monetary Economics*, Vol. 30, No. 3, 343-371.
- Fiorito, R. and T. Kollintzas, 1994, Stylized facts of business cycles in the G7 from a real business cycles perspective, *European Economic Review*, 38, 235-269.
- Gerlach, H.M.S., 1988, World business cycles under fixed and flexible exchange rates, *Journal of Money, Credit, and Banking*, Vol. 20, No. 4, 621-632.
- Hodrick, R.J. and E.C. Prescott, 1980, Post-war U.S. business cycles: An empirical investigation, Working paper no. 451 (Carnegie-Mellon University, Pittsburgh, PA).
- Karras, G., 1994, Sources of business cycles in Europe: 1960-1988. Evidence from France, Germany, and the United Kingdom, *European Economic Review*, 38, 1763-1778.
- King, R.G. and S.Rebello, 1993, Low frequency filtering and real business cycles, *Journal of Economic Dynamics and Control*, 17, 207-231.
- Mitchell, W.C., 1927, *Business cycles: The problem and its setting*, New York: National Bureau of Economic Research.
- Nilsson, R., 1987, OECD leading indicators, *OECD Economic Studies*, No. 9, Autumn 1987, OECD Paris, 105-146.

Tavlas, G., 1993, The 'new' theory of optimum currency areas, *The World Economy*, Vol. 16, No. 6, 663-685.

Yates, F., 1984, Tests of significance for  $2 \times 2$  contingency tables, *Journal of the Royal Statistical Society*, 147, 426-463.

Zarnowitz, V., 1985, Recent work on business cycles in historical perspective: A review of theories and evidence", *Journal of Economic Literature*, Vol. XXIII, 523-580.





# EUI WORKING PAPERS

EUI Working Papers are published and distributed by the  
European University Institute, Florence

Copies can be obtained free of charge  
– depending on the availability of stocks – from:

The Publications Officer  
European University Institute  
Badia Fiesolana  
I-50016 San Domenico di Fiesole (FI)  
Italy

**Please use order form overleaf**



# Publications of the European University Institute

## Department of Economics Working Paper Series

To Department of Economics **WP**  
 European University Institute  
 Badia Fiesolana  
 I-50016 San Domenico di Fiesole (FI)  
 E-mail: [publish@datacomm.iue.it](mailto:publish@datacomm.iue.it)  
 Italy

From Name .....

Address .....

.....

.....

.....

(Please print)

- Please enter/confirm my name on EUI Economics Dept. Mailing List
- Please send me a complete list of EUI Working Papers
- Please send me a complete list of EUI book publications
- Please send me the EUI brochure Academic Year 1996/97

Please send me the following EUI **ECO** Working Paper(s):

No, Author .....

*Title:* .....

No, Author .....

*Title:* .....

No, Author .....

*Title:* .....

No, Author .....

*Title:* .....

Date ..... Signature .....

**Working Papers of the Department of Economics  
Published since 1993**

**ECO No. 93/1**

Carlo GRILLENZONI  
Forecasting Unstable and Non-Stationary  
Time Series

**ECO No. 93/2**

Carlo GRILLENZONI  
Multilinear Models for Nonlinear Time  
Series

**ECO No. 93/3**

Ronald M. HARSTAD/Louis PHILIPS  
Futures Market Contracting When You  
Don't Know Who the Optimists Are

**ECO No. 93/4**

Alan KIRMAN/Louis PHILIPS  
Empirical Studies of Product Markets

**ECO No. 93/5**

Grayham E. MIZON  
Empirical Analysis of Time Series:  
Illustrations with Simulated Data

**ECO No. 93/6**

Tilman EHRBECK  
Optimally Combining Individual  
Forecasts From Panel Data

**ECO NO. 93/7**

Víctor GÓMEZ/Agustín MARAVALL  
Initializing the Kalman Filter with  
Incompletely Specified Initial Conditions

**ECO No. 93/8**

Frederic PALOMINO  
Informed Speculation: Small Markets  
Against Large Markets

**ECO NO. 93/9**

Stephen MARTIN  
Beyond Prices Versus Quantities

**ECO No. 93/10**

José María LABEAGA/Angel LÓPEZ  
A Flexible Demand System and VAT  
Simulations from Spanish Microdata

**ECO No. 93/11**

Maozu LU/Grayham E. MIZON  
The Encompassing Principle and  
Specification Tests

**ECO No. 93/12**

Louis PHILIPS/Peter MØLLGAARD  
Oil Stocks as a Squeeze Preventing  
Mechanism: Is Self-Regulation Possible?

**ECO No. 93/13**

Pieter HASEKAMP  
Disinflation Policy and Credibility: The  
Role of Conventions

**ECO No. 93/14**

Louis PHILIPS  
Price Leadership and Conscious  
Parallelism: A Survey

**ECO No. 93/15**

Agustín MARAVALL  
Short-Term Analysis of Macroeconomic  
Time Series \*

**ECO No. 93/16**

Philip Hans FRANCES/Niels  
HALDRUP  
The Effects of Additive Outliers on Tests  
for Unit Roots and Cointegration

**ECO No. 93/17**

Fabio CANOVA/Jane MARRINAN  
Predicting Excess Returns in Financial  
Markets

**ECO No. 93/18**

Iñigo HERGUERA  
Exchange Rate Fluctuations, Market  
Structure and the Pass-through  
Relationship

**ECO No. 93/19**

Agustín MARAVALL  
Use and Misuse of Unobserved  
Components in Economic Forecasting

**ECO No. 93/20**

Torben HOLVAD/Jens Leth  
HOUGAARD  
Measuring Technical Input Efficiency for  
Similar Production Units:  
A Survey of the Non-Parametric  
Approach

\*out of print

**ECO No. 93/21**

Stephen MARTIN/Louis PHILIPS  
Product Differentiation, Market Structure  
and Exchange Rate Passthrough

**ECO No 93/22**

F. CANOVA/M. FINN/A. R. PAGAN  
Evaluating a Real Business Cycle Model

**ECO No 93/23**

Fabio CANOVA  
Statistical Inference in Calibrated Models

**ECO No 93/24**

Gilles TEYSSIÈRE  
Matching Processes in the Labour Market  
in Marseilles. An Econometric Study

**ECO No 93/25**

Fabio CANOVA  
Sources and Propagation of International  
Business Cycles: Common Shocks or  
Transmission?

**ECO No. 93/26**

Marco BECHT/Carlos RAMÍREZ  
Financial Capitalism in Pre-World War I  
Germany: The Role of the Universal  
Banks in the Financing of German  
Mining Companies 1906-1912

**ECO No. 93/27**

Isabelle MARET  
Two Parametric Models of Demand,  
Structure of Market Demand from  
Heterogeneity

**ECO No. 93/28**

Stephen MARTIN  
Vertical Product Differentiation, Intra-  
industry Trade, and Infant Industry  
Protection

**ECO No. 93/29**

J. Humberto LOPEZ  
Testing for Unit Roots with the k-th  
Autocorrelation Coefficient

**ECO No. 93/30**

Paola VALBONESI  
Modelling Interactions Between State and  
Private Sector in a "Previously" Centrally  
Planned Economy

**ECO No. 93/31**

Enrique ALBEROLA ILA/J. Humberto  
LOPEZ/Vicente ORTOS RIOS  
An Application of the Kalman Filter to  
the Spanish Experience in a Target Zone  
(1989-92)

**ECO No. 93/32**

Fabio CANOVA/Morten O. RAVN  
International Consumption Risk Sharing

**ECO No. 93/33**

Morten Overgaard RAVN  
International Business Cycles: How  
much can Standard Theory Account for?

**ECO No. 93/34**

Agustín MARAVALL  
Unobserved Components in Economic  
Time Series \*

**ECO No. 93/35**

Sheila MARNIE/John  
MICKLEWRIGHT  
Poverty in Pre-Reform Uzbekistan:  
What do Official Data Really Reveal? \*

**ECO No. 93/36**

Torben HOLVAD/Jens Leth  
HOUGAARD  
Measuring Technical Input Efficiency for  
Similar Production Units:  
80 Danish Hospitals

**ECO No. 93/37**

Grayham E. MIZON  
A Simple Message for Autocorrelation  
Correctors: DON'T

**ECO No. 93/38**

Barbara BOEHNLEIN  
The Impact of Product Differentiation on  
Collusive Equilibria and Multimarket  
Contact

**ECO No. 93/39**

H. Peter MØLLGAARD  
Bargaining and Efficiency in a  
Speculative Forward Market

\*\*\*



**ECO No. 94/1**  
Robert WALDMANN  
Cooperatives With Privately Optimal  
Price Indexed Debt Increase Membership  
When Demand Increases

**ECO No. 94/2**  
Tilman EHRBECK/Robert  
WALDMANN  
Can Forecasters' Motives Explain  
Rejection of the Rational Expectations  
Hypothesis?

**ECO No. 94/3**  
Alessandra PELLONI  
Public Policy in a Two Sector Model of  
Endogenous Growth \*

**ECO No. 94/4**  
David F. HENDRY  
On the Interactions of Unit Roots and  
Exogeneity

**ECO No. 94/5**  
Bernadette GOVAERTS/David F.  
HENDRY/Jean-François RICHARD  
Encompassing in Stationary Linear  
Dynamic Models

**ECO No. 94/6**  
Luigi ERMINI/Dongkoo CHANG  
Testing the Joint Hypothesis of Rational-  
ity and Neutrality under Seasonal Coin-  
tegration: The Case of Korea

**ECO No. 94/7**  
Gabriele FIORENTINI/Agustín  
MARAVALL  
Unobserved Components in ARCH  
Models: An Application to Seasonal  
Adjustment \*

**ECO No. 94/8**  
Niels HALDRUP/Mark SALMON  
Polynomially Cointegrated Systems and  
their Representations: A Synthesis

**ECO No. 94/9**  
Mariusz TAMBORSKI  
Currency Option Pricing with Stochastic  
Interest Rates and Transaction Costs:  
A Theoretical Model

**ECO No. 94/10**  
Mariusz TAMBORSKI  
Are Standard Deviations Implied in  
Currency Option Prices Good Predictors  
of Future Exchange Rate Volatility?

**ECO No. 94/11**  
John MICKLEWRIGHT/Gyula NAGY  
How Does the Hungarian Unemploy-  
ment Insurance System Really Work? \*

**ECO No. 94/12**  
Frank CRITCHLEY/Paul  
MARRIOTT/Mark SALMON  
An Elementary Account of Amari's  
Expected Geometry

**ECO No. 94/13**  
Domenico Junior MARCHETTI  
Procyclical Productivity, Externalities  
and Labor Hoarding: A Reexamination of  
Evidence from U.S. Manufacturing

**ECO No. 94/14**  
Giovanni NERO  
A Structural Model of Intra-European  
Airline Competition

**ECO No. 94/15**  
Stephen MARTIN  
Oligopoly Limit Pricing: Strategic  
Substitutes, Strategic Complements

**ECO No. 94/16**  
Ed HOPKINS  
Learning and Evolution in a  
Heterogeneous Population

**ECO No. 94/17**  
Berthold HERRENDORF  
Seigniorage, Optimal Taxation, and Time  
Consistency: A Review

**ECO No. 94/18**  
Frederic PALOMINO  
Noise Trading in Small Markets \*

**ECO No. 94/19**  
Alexander SCHRADER  
Vertical Foreclosure, Tax Spinning and  
Oil Taxation in Oligopoly

**ECO No. 94/20**  
Andrzej BANIAK/Louis PHILIPS  
La Pléiade and Exchange Rate Pass-  
Through

**ECO No. 94/21**  
Mark SALMON  
Bounded Rationality and Learning;  
Procedural Learning

\*out of print

- ECO No. 94/22**  
Isabelle MARET  
Heterogeneity and Dynamics of  
Temporary Equilibria: Short-Run Versus  
Long-Run Stability
- ECO No. 94/23**  
Nikolaos GEORGANTZIS  
Short-Run and Long-Run Cournot  
Equilibria in Multiproduct Industries
- ECO No. 94/24**  
Alexander SCHRADER  
Vertical Mergers and Market Foreclosure:  
Comment
- ECO No. 94/25**  
Jeroen HINLOOPEN  
Subsidising Cooperative and Non-  
Cooperative R&D in Duopoly with  
Spillovers
- ECO No. 94/26**  
Debora DI GIOACCHINO  
The Evolution of Cooperation:  
Robustness to Mistakes and Mutation
- ECO No. 94/27**  
Kristina KOSTIAL  
The Role of the Signal-Noise Ratio in  
Cointegrated Systems
- ECO No. 94/28**  
Agustín MARAVALL/Víctor GÓMEZ  
Program SEATS "Signal Extraction in  
ARIMA Time Series" - Instructions for  
the User
- ECO No. 94/29**  
Luigi ERMINI  
A Discrete-Time Consumption-CAP  
Model under Durability of Goods, Habit  
Formation and Temporal Aggregation
- ECO No. 94/30**  
Debora DI GIOACCHINO  
Learning to Drink Beer by Mistake
- ECO No. 94/31**  
Víctor GÓMEZ/Agustín MARAVALL  
Program TRAMO "Time Series  
Regression with ARIMA Noise, Missing  
Observations, and Outliers" -  
Instructions for the User
- ECO No. 94/32**  
Ákos VALENTINYI  
How Financial Development and  
Inflation may Affect Growth
- ECO No. 94/33**  
Stephen MARTIN  
European Community Food Processing  
Industries
- ECO No. 94/34**  
Agustín MARAVALL/Christophe  
PLANAS  
Estimation Error and the Specification of  
Unobserved Component Models
- ECO No. 94/35**  
Robbin HERRING  
The "Divergent Beliefs" Hypothesis and  
the "Contract Zone" in Final Offer  
Arbitration
- ECO No. 94/36**  
Robbin HERRING  
Hiring Quality Labour
- ECO No. 94/37**  
Angel J. UBIDE  
Is there Consumption Risk Sharing in the  
EEC?
- ECO No. 94/38**  
Berthold HERRENDORF  
Credible Purchases of Credibility  
Through Exchange Rate Pegging:  
An Optimal Taxation Framework
- ECO No. 94/39**  
Enrique ALBEROLA ILA  
How Long Can a Honeymoon Last?  
Institutional and Fundamental Beliefs in  
the Collapse of a Target Zone
- ECO No. 94/40**  
Robert WALDMANN  
Inequality, Economic Growth and the  
Debt Crisis
- ECO No. 94/41**  
John MICKLEWRIGHT/  
Gyula NAGY  
Flows to and from Insured  
Unemployment in Hungary

**ECO No. 94/42**

Barbara BOEHNLEIN  
The Soda-ash Market in Europe:  
Collusive and Competitive Equilibria  
With and Without Foreign Entry

**ECO No. 94/43**

Hans-Theo NORMANN  
Stackelberg Warfare as an Equilibrium  
Choice in a Game with Reputation Effects

**ECO No. 94/44**

Giorgio CALZOLARI/Gabriele  
FIORENTINI  
Conditional Heteroskedasticity in  
Nonlinear Simultaneous Equations

**ECO No. 94/45**

Frank CRITCHLEY/Paul MARRIOTT/  
Mark SALMON  
On the Differential Geometry of the Wald  
Test with Nonlinear Restrictions

**ECO No. 94/46**

Renzo G. AVESANI/Giampiero M.  
GALLO/Mark SALMON  
On the Evolution of Credibility and  
Flexible Exchange Rate Target Zones \*

\*\*\*

**ECO No. 95/1**

Paul PEZANIS-CHRISTOU  
Experimental Results in Asymmetric  
Auctions - The 'Low-Ball' Effect

**ECO No. 95/2**

Jeroen HINLOOPEN/Rien  
WAGENVOORT  
Robust Estimation: An Example

**ECO No. 95/3**

Giampiero M. GALLO/Barbara PACINI  
Risk-related Asymmetries in Foreign  
Exchange Markets

**ECO No. 95/4**

Santanu ROY/Rien WAGENVOORT  
Risk Preference and Indirect Utility in  
Portfolio Choice Problems

**ECO No. 95/5**

Giovanni NERO  
Third Package and Noncooperative  
Collusion in the European Airline  
Industry

**ECO No. 95/6**

Renzo G. AVESANI/Giampiero M.  
GALLO/Mark SALMON  
On the Nature of Commitment in Flexible  
Target Zones and the Measurement of  
Credibility: The 1993 ERM Crisis \*

**ECO No. 95/7**

John MICKLEWRIGHT/Gyula NAGY  
Unemployment Insurance and Incentives  
in Hungary

**ECO No. 95/8**

Kristina KOSTIAL  
The Fully Modified OLS Estimator as a  
System Estimator: A Monte-Carlo  
Analysis

**ECO No. 95/9**

Günther REHME  
Redistribution, Wealth Tax Competition  
and Capital Flight in Growing  
Economies

**ECO No. 95/10**

Grayham E. MIZON  
Progressive Modelling of  
Macroeconomic Time Series: The LSE  
Methodology \*

**ECO No. 95/11**

Pierre CAHUC/Hubert KEMPF  
Alternative Time Patterns of Decisions  
and Dynamic Strategic Interactions

**ECO No. 95/12**

Tito BOERI  
Is Job Turnover Countercyclical?

**ECO No. 95/13**

Luisa ZANFORLIN  
Growth Effects from Trade and  
Technology

**ECO No. 95/14**

Miguel JIMÉNEZ/Domenico  
MARCHETTI, jr.  
Thick-Market Externalities in U.S.  
Manufacturing: A Dynamic Study with  
Panel Data

**ECO No. 95/15**

Berthold HERRENDORF  
Exchange Rate Pegging, Transparency,  
and Imports of Credibility

\*out of print

**ECO No. 95/16**

Günther REHME  
Redistribution, Income cum Investment  
Subsidy Tax Competition and Capital  
Flight in Growing Economies

**ECO No. 95/17**

Tito BOERI/Stefano SCARPETTA  
Regional Dimensions of Unemployment  
in Central and Eastern Europe and Social  
Barriers to Restructuring

**ECO No. 95/18**

Bernhard WINKLER  
Reputation for EMU - An Economic  
Defence of the Maastricht Criteria

**ECO No. 95/19**

Ed HOPKINS  
Learning, Matching and Aggregation

**ECO No. 95/20**

Dorte VERNER  
Can the Variables in an Extended Solow  
Model be Treated as Exogenous?  
Learning from International Comparisons  
Across Decades

**ECO No. 95/21**

Enrique ALBEROLA-ILA  
Optimal Exchange Rate Targets and  
Macroeconomic Stabilization

**ECO No. 95/22**

Robert WALDMANN  
Predicting the Signs of Forecast Errors

**ECO No. 95/23**

Robert WALDMANN  
The Infant Mortality Rate is Higher  
where the Rich are Richer

**ECO No. 95/24**

Michael J. ARTIS/Zenon G.  
KONTOLEMIS/Denise R. OSBORN  
Classical Business Cycles for G7 and  
European Countries

**ECO No. 95/25**

Jeroen HINLOOPEN/Charles VAN  
MARREWIK  
On the Limits and Possibilities of the  
Principle of Minimum Differentiation

**ECO No. 95/26**

Jeroen HINLOOPEN  
Cooperative R&D Versus R&D-  
Subsidies: Cournot and Bertrand  
Duopolies

**ECO No. 95/27**

Giampiero M. GALLO/Hubert KEMPF  
Cointegration, Codependence and  
Economic Fluctuations

**ECO No. 95/28**

Anna PETTINI/Stefano NARDELLI  
Progressive Taxation, Quality, and  
Redistribution in Kind

**ECO No. 95/29**

Ákos VALENTINYI  
Rules of Thumb and Local Interaction

**ECO No. 95/30**

Robert WALDMANN  
Democracy, Demography and Growth

**ECO No. 95/31**

Alessandra PELLONI  
Nominal Rigidities and Increasing  
Returns

**ECO No. 95/32**

Alessandra PELLONI/Robert  
WALDMANN  
Indeterminacy and Welfare Increasing  
Taxes in a Growth Model with Elastic  
Labour Supply

**ECO No. 95/33**

Jeroen HINLOOPEN/Stephen MARTIN  
Comment on Estimation and  
Interpretation of Empirical Studies in  
Industrial Economics

**ECO No. 95/34**

M.J. ARTIS/W. ZHANG  
International Business Cycles and the  
ERM: Is there a European Business  
Cycle?









© The Author(s). European University Institute.

Digitised version produced by the EUI Library in 2020. Available Open Access on Cadmus, European University Institute Research Repository.