

## REVIEW:

### **International Myeloma Working Group guidelines for serum free light chain analysis in multiple myeloma and related disorders**

A. Dispenzieri<sup>1</sup>, R. Kyle<sup>1</sup>, G. Merlini<sup>2</sup>, JS Miguel<sup>3</sup>, H. Ludwig<sup>4</sup>, R. Hajek<sup>5</sup>, A. Palumbo<sup>6</sup>, S. Jagannath<sup>7</sup>, J. Blade<sup>8</sup>, S. Lonial<sup>9</sup>, M. Dimopoulos<sup>10</sup>, R. Comenzo<sup>11</sup>, H. Einsele<sup>12</sup>, B. Barlogie<sup>13</sup>, K. Anderson<sup>14</sup>, M. Gertz<sup>1</sup>, JL Harousseau<sup>15</sup>, M. Attal<sup>16</sup>, P. Tosi<sup>17</sup>, P. Sonneveld<sup>18</sup>, M. Boccadoro<sup>6</sup>, G. Morgan<sup>19</sup>, P. Richardson<sup>14</sup>, O. Sezer<sup>20</sup>, MV Mateos<sup>3</sup>, M. Cavo<sup>21</sup>, D. Joshua<sup>22</sup>, I. Turesson<sup>23</sup>, W. Chen<sup>24</sup>, K. Shimizu<sup>25</sup>, R. Powles<sup>26</sup>, S.V. Rajkumar<sup>1</sup> and B.G.M. Durie<sup>27</sup>, on behalf of the International Myeloma Working Group\*

*<sup>1</sup>Departments of Hematology/Laboratory Medicine/Pathology, Mayo Clinic, Rochester, MN, USA; <sup>2</sup>Department of Biochemistry, University Hospital San Matteo, Italy; <sup>3</sup>Department of Hematology, Servicio de Hepatología, Hospital Universitario de Salamanca. CIC, IBMCC (USAL-CSIC). Spain; <sup>4</sup>1<sup>st</sup> Medical Department and Oncology, Wilhelminenspital Der Stat Wien, Vienna, Austria; <sup>5</sup>Czech Myeloma Group & Department of Internal Medicine Fn Brno and LF MM Brno, Czech Republic, CR; <sup>6</sup>Divisione de Ematologia, University of Torino, Torino, Italy; <sup>7</sup>Department of Medical Oncology/Internal Medicine, St Vincent's Comprehensive Cancer Center, New York, NY, USA; <sup>8</sup>Department of Hematology, Hospital Clinic, IDIBAPS, Barcelona, Spain; <sup>9</sup>Hematology/Medical Oncology, Emory University, Atlanta, GA, USA; <sup>10</sup>Departments of Therapeutics, Alexandra Hospital, Athens, Greece; <sup>11</sup>Department of Clinical Laboratories, Memorial Sloan-Kettering Cancer Center, New York, NY, USA; <sup>12</sup>Department of Internal Medicine, University of Wurzburg, Wurzburg, Germany; <sup>13</sup>Departments of Hematology and Pathology, MIRT UAMS, Little Rock, Arkansas, USA ; <sup>14</sup>Department of Medical*

*Oncology/Hematologic Malignancies, DFCI, Boston, MA, USA; <sup>15</sup>Department of Hematology, Institute de Biologie, Nantes. France; <sup>16</sup>Departments of Hematology and Biostatistics, Purpan Hospital, Toulouse, France; <sup>17</sup>Institute of Hematology and Medical Oncology, University of Bologna, Bologna, Italy; <sup>18</sup>Department of Hematology, Rotterdam, The Netherlands; <sup>19</sup>Department of Hematology/Oncology, The Leukemia and Myeloma Program, Wimbledon, UK; <sup>20</sup>Department of Hematology/Oncology, University of Berlin, Germany, <sup>21</sup>Institute of Hematology and Medical Oncology Seragnoli, Bologna, Italy; <sup>22</sup>Institute of Hematology, Royal Prince Alfred Hospital, New South Wales, Australia; <sup>23</sup>Department of Hematology/Medicine Malmö University Hospital, Malmö, Sweden; <sup>24</sup>Department of Hematology/Oncology Beijing Chaoyang Hospital, Beijing, China; <sup>25</sup>Department of Internal Medicine, Nagoya City Higashi General Hospital, Nagoya, Japan; <sup>26</sup>Department of Hematology/Oncology, Parkside Cancer Centre, London, United Kingdom; and <sup>27</sup>Aptium Oncology, Inc., Cedars-Sinai Outpatient Cancer Center at the Samuel Oschin Comprehensive Cancer Institute, Los Angeles, CA, USA.*

## **INVITED MANUSCRIPT: Leukemia Spotlight Series**

Corresponding Author: Dr. Angela Dispenzieri

Associate Professor of Medicine

Division of Hematology and Division of Laboratory Medicine

Mayo Clinic

200 First Street SW

Rochester, MN 55905

United States of America

[dispenzieri.angela@mayo.edu](mailto:dispenzieri.angela@mayo.edu)

Phone: 507 284-2479

Fax: 507 266-4972

## **Abstract**

The serum immunoglobulin free light chain (FLC) assay measures levels of free  $\kappa$  and  $\lambda$  immunoglobulin light chains. There are three major indications for the FLC assay in the evaluation and management of multiple myeloma and related plasma cell disorders (PCD). In the context of screening, the serum FLC assay in combination with serum protein electrophoresis (PEL) and immunofixation yields high sensitivity, and negates the need for 24-hour urine studies for diagnoses other than light chain amyloidosis (AL). Second, the baseline FLC measurement is of major prognostic value in virtually every PCD. Third, the FLC assay allows for quantitative monitoring of patients with oligosecretory PCD, including AL, oligosecretory myeloma, and nearly two-thirds of patients who had previously been deemed to have non-secretory myeloma. In AL patients, serial FLC measurements outperform PEL and immunofixation. In oligosecretory myeloma patients, although not formally validated, serial FLC measurements reduce the need for frequent bone marrow biopsies. In contrast, there are no data to support using FLC assay in place of 24-hour urine PEL for monitoring or for serial measurements in PCD with measurable disease by serum or urine PEL. This manuscript provides consensus guidelines for the use of this important assay, in the diagnosis and management of clonal PCD.

**Key words:** Immunoglobulin free light chain; prognosis; myeloma; amyloid

## INTRODUCTION

The monoclonal plasmaproliferative disorders encompass a broad spectrum of diseases ranging from the often benign monoclonal gammopathy of undetermined significance (MGUS) to the potentially curable solitary plasmacytoma to the life-threatening conditions of multiple myeloma (MM) and light chain amyloidosis (AL). For each of these diseases, measurements of circulating monoclonal immunoglobulins have been the mainstay of diagnosis, prognosis and management. Until the 1990s, the repertoire of tests to document and measure the monoclonal immunoglobulins included electrophoresis (PEL), immunoelectrophoresis, immunofixation electrophoresis (IFE), and nephelometric measurement of immunoglobulin heavy chains of serum. For most MGUS and MM patients, these measurements appeared to be sufficient; however, they were inadequate for the majority of patients with AL and more than the 3% of myeloma patients with non-secretory or oligosecretory myeloma.

In the early 2000's an assay that measured serum immunoglobulin free light chains (FLC) was developed.<sup>1</sup> This assay differentiated itself from prior light chain reagents that were called quantitative light chain measurements in that these novel polyclonal antibodies reacted with only those epitopes that were hidden when bound to heavy chain but available when not associated with heavy chain (Figure 1). As will be discussed, this assay has moved into clinical practice based on the building evidence of its utility. The purpose of this document is to describe its potential uses and most importantly distinguish which uses have proved utility and those which are still undergoing investigation.

## **IMMUNOGLOBULIN FREE LIGHT CHAIN PRODUCTION AND MEASUREMENT**

Serum concentrations of FLC are dependent on the balance between production by plasma cells and renal clearance. Serum FLC are cleared rapidly through the renal glomeruli with a serum half-life of 2-4 hours and are then metabolized in the proximal tubules of the nephrons. Under ordinary circumstances, little protein escapes to the urine, and serum FLC concentrations have to increase manyfold before the absorption mechanisms are overwhelmed.<sup>2</sup> Approximately 10–30 g of FLC can be metabolized per day by the kidneys compared with normal plasma-cell production of 0.5–1 g per day<sup>3</sup>

Abnormal concentrations of  $\kappa$  and  $\lambda$  FLC may result from a number of clinical situations including immune suppression, immune stimulation, reduced renal clearance, or monoclonal plasma cell proliferative disorders. Sera from patients with either polyclonal hypergammaglobulinemia or renal impairment often have elevated  $\kappa$  FLC and  $\lambda$  FLC due to increased synthesis or reduced renal clearance respectively. The  $\kappa/\lambda$  FLC ratio (rFLC), however, usually remains normal in these conditions.<sup>4</sup> A significantly abnormal  $\kappa/\lambda$  rFLC should only be due to a plasmaproliferative (or lymphoproliferative) disorder that secretes excess FLC and disturbs the normal balance between  $\kappa$  and  $\lambda$  secretion.

## **SERUM FLC ASSAY**

The serum FLC assay (FREELITE™, The Binding Site Ltd., Birmingham, U.K.) is based on a commercial reagent set of polyclonal antibodies and is performed by immunonephelometry and it can be performed on a number of automated laboratory instruments.<sup>1</sup> The assay consists of 2 separate measurements: one to quantitate  $\kappa$  FLC and the other to quantitate  $\lambda$  FLC.

Sensitive hemmagglutination assays showed reactivity to cells coated with the appropriate FLC at dilutions of  $>1:16,000$  and no reactivity to light chains contained in intact immunoglobulin at dilutions of  $<1:2$ . Although this would suggest that the reagents have at least a 10,000-fold difference in reactivity to FLC compared to light chain contained in intact immunoglobulin,<sup>1</sup> Nakano et al have shown that there is cross reactivity: 20% at an intact immunoglobulin concentration of 12.5 mg/L for the  $\kappa$  reagent; and 0.35% at 50 mg/L for the  $\lambda$  reagent.<sup>5</sup> The greater the specificity, the better one's ability to quantitate  $\kappa$  and  $\lambda$  FLC in the presence of a large excess of serum IgG, IgA and IgM. This distinction is important, because in normal individuals and in the majority of patients with myeloma, most of the circulating light chain is bound to heavy chains – making less specific reagents a near surrogate for circulating heavy chain measurement.

Katzmann et al defined the normal range using fresh and frozen sera from 127 healthy donors 21–62 years of age and frozen sera from 155 donors 51–90 years of age from the serum bank.<sup>4</sup> The 95% reference interval for  $\kappa$  FLC was 3.3–19.4 mg/L, and that for  $\lambda$  FLC was 5.7–26.3 mg/L. For the  $\kappa/\lambda$  ratio, the 95% reference interval was 0.3–1.2, but it was decided that diagnostic range should include 100% of donors, making the normal diagnostic range for FLC  $\kappa/\lambda$  0.26–1.65. Using the 100% confidence interval increased the specificity of the test from 95% to 100%, with a drop in sensitivity from 98% to 97%. Patients with ratios greater than 1.65 contain excess  $\kappa$  FLC and are presumed to be producing clonal  $\kappa$  FLC. Patients with ratios less than 0.26 contain excess  $\lambda$  FLC and are presumed to be producing clonal  $\lambda$  FLC.

The 100% confidence interval used reduces the likelihood that polyclonal activation of B-cells will cause an abnormal ratio, but it is possible, and therefore the test must be interpreted in

the context of clinical situation. If a patient is in the midst of an infection or a flare of a rheumatologic condition, the test should be repeated at a later date.

Although the test is a major advance, it is not without its limitations.<sup>6</sup> First, there can be significant lot-to-lot variation (19-20% CV) between batches of polyclonal FLC antisera may result in variable immunoreactivity of individual monoclonal FLCs and inconsistent results.<sup>6</sup> Second, some monoclonal light chains (particularly  $\kappa$  FLC) do not dilute in a linear fashion and may be underestimated in the absence of additional off line dilutions.<sup>6</sup> Third, antigen excess can cause falsely low serum FLC results with nephelometric techniques, and manual dilution may be required for clinically suspicious samples.<sup>7</sup> For large multi-institutional trials, serious consideration should be had for running samples at a centralized testing facility that performs lot-to-lot comparisons. Fourth, changes in amino acid sequence of the light chain may render certain light chain epitopes unrecognizable to the FLC reagents, but apparent on immunofixation or even electrophoresis. Conversely, extreme polymerization can cause an overestimation by as much as 10-fold.

## **URINE FLC ASSAY**

Most typically, the quantity of urinary light chains has been measured by 24 hour urine protein electrophoresis. One can measure urinary light chains by immunonephelometry as well,<sup>1</sup> but this technique cannot be recommended routinely based on the present body of knowledge regarding their use.<sup>8</sup> Bradwell et al measured the free  $\kappa$  and  $\lambda$  concentrations in the urine of 66 normal individuals and found that the respective values are  $5.4 \pm 4.95$  mg/L and  $3.17 \pm 3.3$  mg/L with a mean  $\kappa:\lambda$  ratio of 1:0.54 (95% confidence interval, 1:2.17–1:0.25).<sup>1</sup> After studying urine



specimens from 20 patients analyzed by Freelite (The Binding Site) and SDS-agarose gel electrophoresis (Hydragel proteinurie, Sebia), Le Bricon et al concluded that when using the  $\kappa/\lambda$  ratio the Freelite was more sensitive than electrophoresis to detect FLC, but that the concentration was overestimated in 75% of cases.<sup>8</sup> In another study of samples from patients with LCMM, correlation between concentrations of FLC in serum and urine (measured by immunoassay and corrected for urine dilution with creatinine concentrations) in the 224 patients was non-existent ( $\kappa$ ,  $r=0.29$ ,  $p=0.001$ ;  $\lambda$ ,  $r=0.13$ ,  $p=0.2$ ).<sup>3</sup> The urine immunoglobulin FLC test is NOT recommended for monitoring patients.

## **ROLE OF THE SERUM FLC ASSAY IN DIAGNOSIS**

### **Serum FLC Assay in Screening for Plasma Cell Disorders**

It is clear that having excess involved FLC or an abnormal rFLC is common in virtually all plasma cell disorders (Table 1). Historically, the gold standard for screening for PCD has been PEL with immunofixation (IFE) of the serum and the urine. Important questions about the FLC assay in terms of screening are: 1) does the FLC assay add anything to IFE; and 2) if the tests are equivalent, is one test either cheaper or more convenient than the other? Neither of these questions has been answered in full, but there are pertinent data. The most important screening study was done by the Katzmann et al.<sup>9</sup> They asked whether the serum immunoglobulin FLC assay could replace urine IFE for **screening** patients suspected of having a monoclonal protein related disorder. Within the Mayo Clinic plasma cell disorder data base, 428 patients who had a **positive** urine IFE and who had serum PEL with IFE and serum FLC assay testing as a clinical assessment were identified. Serum PEL with IFE alone would have missed the diagnosis in 28 patients (6.5%): MM (n=2); AL (n=19); plasmacytoma (n=3); smoldering MM (n=1); and

MGUS (n=2).<sup>9</sup> In contrast, serum FLC alone would have missed 14% of patients, but the combination of serum IFE and FLC identified 99.5% of patients with a positive urine (Table 2). The two patients, who would have been missed had the urine IFE not been done, had low risk MGUS.<sup>9</sup> These findings are similar to those found by Beetham et al, who reported that the sensitivity and specificity of an abnormal serum rFLC as a single screening test to be 0.76 and 0.96 with negative and positive predictive values of 0.98 and 0.59, respectively.<sup>10</sup> The FLC assay at diagnosis is especially relevant in patients with AL amyloidosis or any disease that has predominantly free light chains. Among 110 AL patients who had not been previously treated and who had a FLC assay performed within 120 days of diagnosis, the rFLC was positive in 91% compared with 69% for serum IFE and 83% for urine IFE. The combination of serum IFE and serum FLC assay detected an abnormal result in 99% (109 of 110) of patients with AL.<sup>11</sup>

To date, there are no data that fully address what the FLC assay adds to the serum IFE, although the Katzmann data come close.<sup>9</sup> Its major deficiency in addressing this question is that the population tested included patients with positive urine immunofixation studies; the chosen selection criteria answered the question they posed, but increased the likelihood of a positive serum FLC assay since the median amounts of serum FLCs required to produce overflow proteinuria has been measured at 113mg/L for  $\kappa$  (range 7-39,500mg/L) and 278 mg/L for  $\lambda$  (range 6-710mg/L).<sup>12</sup> There are several papers that demonstrate that the addition of FLC to serum PEL or capillary zone electrophoresis (CZE) increases the sensitivity of these tests, which is not surprising because they only detect monoclonal proteins large enough to be seen through a normal or polyclonal background. PEL and CZE should not be considered sufficient testing when contemplating a diagnosis of plasma cell disorder. Typical sensitivity levels are 1-2 g/L for SPEP, 150-500mg/L for

IFE and intermediate in sensitivity for CZE.<sup>1</sup> Serum FLC immunoassays have a sensitivity of less than 1 mg/L.<sup>4</sup>

The conclusion drawn from these studies and others<sup>13-17</sup> is that for the purpose of *screening* for monoclonal proteins for all diagnoses except AL, the FLC can replace the 24 hour urine IFE; however, once a diagnosis of monoclonal gammopathy is made, the 24 hour protein IFE should be done. For AL screening, however, the urine IFE should still be done in addition to the serum tests including the serum FLC.

Not only is the screening strategy of serum IFE and FLC sensible based on physiology, but also potentially from a cost and practicality perspective. Katzmann et al. noted that the 2006 Medicare reimbursement for serum FLC analysis was \$38 compared with \$71 for 24 hour urine studies (total protein, PEP and IFE).<sup>9</sup> Hence, the cost of adding serum FLC analysis was approximately half the cost of the comparable urine tests. In the study by Hill et al. in the UK, there was an additional cost of \$9 per patient to include the FLC assay. Since in many laboratories the initial blood sample is accompanied by urine in only 40 to 52% of cases,<sup>10,13</sup> there may be cost increases. Both patients and physicians are reluctant to do 24 hour urine collections because of the inconvenience posed, but depending on the indication for the original monoclonal protein study of the blood, they could be missing at least 10 -17% of cases with either AL amyloidosis or light chain myeloma (LCMM) by doing serum IFE alone.<sup>11,15</sup> The ease of performing the FLC measurement could rectify this deficiency and lead to earlier diagnosis of these disorders.

**Recommendations for the use of the serum FLC assay in Screening: As shown in Table 4, the serum FLC assay in combination with serum PEL and serum IFE is sufficient to screen**

**for pathological monoclonal plasmaproliferative disorders other than AL, which requires all the serum tests as well as the 24 hour urine IFE. If a diagnosis of a plasma cell disorder is made, a 24 hour urine for PEL and IFE is essential for all patients.**

### **PROGNOSTIC VALUE OF THE SERUM FLC ASSAY**

The increased diagnostic sensitivity for the FLC diseases and the ability to eliminate urine in the diagnostic screen was somewhat predictable once the analytic sensitivity of the serum FLC assay was understood. A finding that emerged, but that was not entirely expected, was that baseline values of serum FLC can be used for prognostication (Table3). The pathogenic rationale for this linkage is not well understood, but one possibility is that higher levels of FLC may be associated with IgH translocations<sup>18</sup> as well as increasing tumor burden.<sup>19,20</sup>

### **Monoclonal Gammopathy of Undetermined Significance (MGUS)**

Approximately 1/3 of MGUS patients have an abnormal rFLC and have a higher rate of progression than those who do not (Figure 2A). Based on the size of the monoclonal protein peak, the isotype of the heavy chain, and the rFLC, a risk model for progression of MGUS to MM has been constructed.<sup>21</sup> For the purpose of prognostic modeling, a rFLC of <0.25 or >4 was selected as abnormal. In addition to abnormal rFLC, on multivariate modeling an M-spike greater than or equal to 1.5 g/dL and a heavy chain isotype other than IgG were associated with risk of progression to MM or related disorders. The risk of progression at 20 years for patients with 0, 1, 2 or 3 risk factors was 5%, 21%, 37%, or 58%, respectively (Figure 2B).

### **Smoldering (asymptomatic) multiple myeloma**

In addition to the use of FLC for prognosis in MGUS, baseline rFLC is useful for assessing prognosis for progression in smoldering MM.<sup>22</sup> Baseline serum samples were available in 273 patients with SMM seen from 1970 to 1995. Abnormal rFLC predicted for higher rates of progression, and the best breakpoint for rFLC was less than or equal to 0.125 or greater than or equal to 8 (hazard ratio, 2.3; 95% CI, 1.6-3.2) (Figure 2C). The extent of abnormality of rFLC was independent of SMM risk categories defined by the number of bone marrow plasma cells (BMPC) and size of serum M proteins.<sup>23</sup> A risk model was constructed, incorporating the best breakpoint of rFLC, BMPC  $\geq$  10%, and serum M protein  $\geq$  3 g/dL. Patients with 1, 2, or 3 risk factors had 5-year progression rates of 25%, 51%, and 76% respectively (Figure 2D).

### **Solitary Plasmacytoma**

In a cohort of 116 patients with solitary plasmacytoma the rFLC was retrospectively determined on serum collected at time of diagnosis. An abnormal ratio was present in 47% and associated with a higher risk of progression to myeloma (P = .039). The risk of progression at 5 years was 44% in patients with an abnormal serum rFLC at diagnosis compared with 26% in those with a normal rFLC. One to 2 years following diagnosis, a persistent serum M protein level of 0.5 g/dL or higher was an additional risk factor for progression to MM. A risk stratification model was constructed using the 2 variables of rFLC (normal or abnormal) and M protein level persistence at a level of 0.5 g/dL or greater. The low risk (n = 31), intermediate risk (n = 26), and high risk (n = 18) groups had 5 year progression rates of 13%, 26%, and 62%, respectively (P < .001).<sup>24</sup>

## Multiple Myeloma

Several studies have shown that baseline FLC is prognostic for survival in patients with newly diagnosed active myeloma.<sup>20,25-27</sup> Kyrtsolis et al found that in 94 MM patients rFLC was prognostic (Figure 3A). Median baseline rFLC was 3.6 in  $\kappa$ -MM patients and 0.02 in  $\lambda$ -MM. 'High' rFLC (worse than median) correlated with elevated serum creatinine and lactate dehydrogenase, extensive marrow infiltration and LCMM. The 5-year disease-specific survival was 82% and 30% in patients with rFLC less extreme or more extreme than median, respectively (P = 0.0001).<sup>25</sup> The rFLC added to the international staging system (ISS), with ISS stage 3 patients having a 5 year disease specific survival of 52% versus 16% depending on their rFLC.

Van Rhee et al have also demonstrated that among 301 patients enrolled to receive total therapy III, those with the highest levels of FLC— greater than 750 mg/L, which was the highest tercile—had the poorest outcomes (Figure 3B and C). The highest baseline FLC levels were significantly associated with LCMM, elevated creatinine (greater than or equal to 176.8 microM or 2 mg/dL), beta-2-microglobulin (greater than or equal to 297.5 nM/L or 3.5 mg/L), lactate dehydrogenase (greater than or equal to 190 U/L), and bone marrow plasmacytosis higher than 30%.<sup>20</sup>

Lastly, Snozek et al have also shown in a cohort of 790 patients diagnosed with active MM between 1995 and 1998 that baseline rFLC <0.03 or >32 (n=479) had inferior outcomes as compared to those with an rFLC between 0.03-32 (n=311), with median survival of 30 versus 39 months, respectively.<sup>26</sup> When the abnormal rFLC was incorporated into a model using the cut-offs applied in the International Staging System,<sup>28</sup> i.e. albumin <3.5 mg/dL and serum  $\beta_2$ -microglobulin  $\geq$ 3.5 mg/dL, it was found that rFLC was an independent risk factor. Patients with

0, 1, 2, or 3 adverse risk factors had significantly different overall survival, with median survival times of 51, 39, 30 and 22 months, respectively,  $P < 0.001$  (Figure 3D).<sup>26</sup>

### **Immunoglobulin Light Chain Amyloidosis (AL)**

In a cohort of 119 patients with AL undergoing peripheral blood stem cell transplantation, there was a significantly higher risk of death in patients with higher baseline FLC (hazard ratio 2.6,  $P < .04$ ).<sup>19</sup> Baseline FLC correlated with serum cardiac troponin levels, and higher FLC levels were associated with more organs involved by amyloid, suggesting that high FLC levels may be associated with more advanced disease.

**Recommendations for the use of the serum FLC assay in Prognosis: The serum FLC assay should be measured at diagnosis for all patients with MGUS, smoldering or active multiple myeloma, solitary plasmacytoma, and AL amyloidosis (Table 4).**

### **ROLE OF THE FLC ASSAY IN RESPONSE ASSESSMENT**

Although FLC response can be considered in 3 contexts--oligosecretory diseases, light chain myeloma, and measurable intact immunoglobulin disease--routine serial use of this assay can only be recommended for the first indication. As will be discussed below, to date there have been only a few studies that have validated the usefulness of serial FLC measurements,<sup>19,29-31</sup> although efforts for standardizing FLC response have been proposed.<sup>32,33</sup> For serial measurements, either the involved FLC or the difference between the involved and uninvolved (dFLC) should be used.<sup>27</sup> Aside from the time of diagnosis and in the context of documenting stringent complete response, the rFLC is not useful because of the not infrequently observed

treatment related immunosuppression of the uninvolved ( $\kappa$  for monoclonal  $\lambda$  patients and  $\lambda$  for monoclonal  $\kappa$  patients) FLC during chemotherapy; the ratios generated when one of the FLC numbers is very low will be extreme, reflecting the degree of immunosuppression more than tumor burden.

### **Published FLC response criteria (Table 5)**

**Multiple Myeloma:** In MM, the International Myeloma Working Group has recently published updated response criteria which incorporate the FLC assay. The criteria are shown in Table 5 as they pertain to FLC.<sup>33</sup> There have been no formal studies performed yet to date to validate these criteria.

**AL amyloidosis:** The consensus opinion from the 10<sup>th</sup> International Symposium on Amyloid and Amyloidosis has defined FLC response in patients with AL amyloidosis as a FLC response in those individuals in involved FLC (iFLC) greater than 10 mg/dL as a 50% reduction in iFLC and progression as a 50% increase in iFLC.<sup>32</sup> The definition used for amyloid patients has been partially validated based on the work of Lachmann,<sup>29</sup> Santhorawala,<sup>31</sup> and Palladini,<sup>30</sup> as described below.

### **Studies evaluating FLC response in oligosecretory disease (AL amyloidosis, oligosecretory MM and light chain deposition disease)**

Lachmann et al were the first to relate changes of FLC with overall survival in any disease.<sup>29</sup> They demonstrated that those AL patients who achieved more than a 50% reduction in their iFLC were more likely to live longer. The majority of patients in that series were patients



receiving non-myeloablative chemotherapy. Subsequently, in a group of patients undergoing hematopoietic stem cell transplant (HSCT), Dispenzieri et al found that 50% reduction of iFLC was not predictive of overall survival but that this degree of reduction was associated with a trend toward improvement in both hematologic and organ response rate.<sup>19</sup> Rather, normalization of iFLC was the most important determinant to predict for hematologic response, organ response and overall survival. In a study of 45 evaluable patients undergoing HSCT, Cohen et al demonstrated that normalization of rFLC at 3 months predicted for both progression free and overall survival.<sup>34</sup> The discrepancy between the HSCT and non-transplant studies may lie in the relative proportion achieving greater than a 50% reduction in iFLC. Contrary to the findings of others,<sup>19,31,34</sup> reductions in iFLC greater than 50% did not further improve prognosis in the Lachmann study.<sup>29</sup> Sanchowala and colleagues also demonstrated that the deeper the FLC response, the higher likelihood of both organ and hematologic complete response.<sup>31</sup> Moreover, Palladini et al have shown that FLC reductions correlate with reductions of NT-proBNP, a marker of cardiac function, and predict for overall survival.<sup>30</sup> In the Sanchowala series, greater than a 90% reduction in serum FLC was a better predictor of organ response than was complete hematologic response.<sup>31,35</sup> Finally, Dispenzieri et al demonstrated that immunoglobulin FLC response was a better predictor of survival in patients with AL amyloidosis than complete hematologic response (Figure 4),<sup>19</sup> as defined by the Blade myeloma response criteria.<sup>35</sup>

In contrast, there are no data to date to verify that FLC changes in patients with oligosecretory myeloma correlates with those of bone marrow plasmacytosis or overall disease status, but the assumption has been made that it does based on anecdotal information.<sup>36</sup> Six of the patients studied during the course of their disease “showed changes in concentrations of FLC that were in accordance with their clinical progress.”<sup>36</sup> Finally, although there are no published

data validating the use of the FLC assay in patients with light chain deposition disease, the personnel experience of the authors speaks to its utility in these cases.

### **Studies evaluating FLC response in light chain myeloma**

There have been several studies that have demonstrated excellent sensitivity of the serum FLC in detecting FLC in patients with LCMM. Consistently, however, it has been shown that there is not a strong correlation between serum FLC and measurement of urine FLC by 24 hour protein electrophoresis.<sup>3,12,27,37,38</sup> When evaluating the performance of changes of serum FLC and of urinary M-spikes over time, there is a relationship to the changes, but to date, no one has shown high correlation coefficients.

Dispenzieri et al evaluated the relationship between serum FLC and 24-hour urine total protein and 24 hour urine M-protein using 101 patients with baseline iFLC of 5 mg/dL or greater. The correlation coefficients between percentage change of iFLC and urine M-protein after 2 months of chemotherapy was poor.<sup>27</sup> Smaller laboratory based studies have also been performed. Abraham et al performed serial FLC measurements in 28 LCMM patients and used a random effects model to estimate the correlation between changes in urinary M protein and serum FLC. Changes in serum FLC over a period of time correlated with changes in the amount of 24-h urinary M protein for an individual patient using a random effects model.<sup>37</sup> Finally, when Bradwell et al retrospectively reviewed screening baseline serum samples of 224 patients LCMM who had enrolled onto MRC clinical trials, all were correctly identified from serum FLC samples;<sup>3</sup> however, upon serial monitoring of 82 of these patients, the authors observed “a relationship” between responses as characterized by serum FLC and 24 hour urine PEL but do not provide data about correlation coefficients and time points of the serial measurements.

## **Role of FLC response in patients with measurable intact immunoglobulins**

Monitoring of serum free-light-chains may eventually prove to be appropriate in myeloma patients with intact immunoglobulin and those with LCMM, since approximately 95% also produce excess serum FLC;<sup>39</sup> however, outside of measuring baseline levels, there are few data to support this recommendation presently, with the exceptions noted below. One can parse the possibilities into 3 categories: 1) using FLC response as an earlier predictor of overall outcomes; 2) FLC response to define stringent complete response in myeloma; and 3) FLC to replace urinary measurements, in the case of light chain escape.

It has been noted that measurements of serum FLC may be more sensitive for early response and early relapse than are standard measurements of the involved heavy chain. With regards to detecting early response or lack thereof, the rationale is logical. FLC half-life is 2-4 hours, whereas that for a typical IgG is approximately 8-21 days. Graphs have been presented demonstrating this effect in patients.<sup>39</sup> However, no one has shown that early detection of lack of response predicts for ultimate treatment failure, or that the 3-4 week time delay that may occur when using measurements of heavy chains actually affects the ultimate outcome of the patient. Serial measurement of serum FLC may also detect relapse sooner than do the protein electrophoresis studies. Once again, the difficulty lies in the absence of data to support that knowledge of disease reactivation or drug failure a few months early has any impact on overall patient outcome. Although the interesting argument has been made that earlier prediction of drug failure could provide economic benefit in an era when novel agents are extremely expensive,<sup>40</sup> there are not sufficient data to recommend abandonment of a treatment regimen based on the FLC alone in patients with non-oligosecretory disease..

Van Rhee et al reported that patients treated with VDT-PACE who had the deepest FLC reductions after 2-3 cycles of therapy did worse than those who did not, but their analysis was confounded by the fact that patients with lower levels of FLC were incapable of having very high percentage reduction of their free light chains.<sup>20</sup> For example a patient with a baseline FLC of 5 mg/dL cannot achieve a 96% reduction, which would be dropping the level to 0.2 mg/dL—a pathologically low value. The authors provide no information about whether very high percentages of reduction were independent of baseline FLC. In contrast, Dispenzieri et al demonstrated that although FLC response at 2 months into alkylator based therapy predicted for ultimate PEL response, it did not predict for overall or progression-free survival.<sup>27</sup> The major limitation of this study, however, is that the induction chemotherapy employed did not contain novel chemotherapeutic agents.

Although normalization of rFLC has been incorporated into the definition of stringent complete response in the International Myeloma Working Group Uniform Response Criteria,<sup>33</sup> there are no data as of yet to document that complete response with or without the rFLC criteria is prognostic for progression free survival or overall survival. There is one published study in which patients were treated with doxorubicin and dexamethasone for 2 or 3 months followed by thalidomide and dexamethasone for 2 months.<sup>41</sup> The authors found that normalization of the rFLC after one or two cycles of treatment, which occurred in 8 of 37 patients, was significantly associated with the achievement of CR or nCR ( $P < 0.003$ ). The significance of this finding is uncertain because no information about PFS or OS as it related to rFLC normalization is provided.

For those patients with intact immunoglobulin myeloma without significant Bence Jones proteinuria, 24 hour protein electrophoresis is typically done infrequently. However, patients

with advanced disease can develop light chain escape with or without extramedullary disease. For unclear reasons, a subclone of malignant plasma cells expands that is incapable of producing significant amounts of immunoglobulin heavy chain, but retains the ability to make light chains. Without doing periodic urinary evaluations or serum FLC measurements, this phenomenon can be missed.<sup>42</sup>

***Recommendations for the use of the serum FLC assay in Response Assessment: Serial FLC ascertainment should be routinely performed in patients with AL amyloidosis and multiple myeloma patients with oligosecretory disease. It should also be done in all patients who have achieved a CR to determine whether they have attained a stringent CR.***

## **USING THE FLC ASSAY IN THE SETTING OF RENAL INSUFFICIENCY**

There is limited information about the use of this assay in the context of renal insufficiency, but several generalizations are possible. Although renal failure will increase the levels of both  $\kappa$  and  $\lambda$  FLC in a given individual, it will not cause an abnormal rFLC. Interpreting serial measurements of iFLC in patients with oligosecretory myeloma, LCDD, or amyloidosis who are on dialysis or who have markedly abnormal renal function is very challenging, and response assessment has not been validated. However, following the dFLC or the iFLC, whilst noting the uninvolved FLC and as an additional indicator of renal status, can provide information in these very complicated patients.

## **CONCLUSION**

In summary, there are four major indications for the FLC assay in the evaluation and management of MM and related clonal plasma cell disorders. In the context of screening for the

presence of myeloma or related disorders, the serum FLC assay in combination with serum protein electrophoresis and immunofixation yields high sensitivity, and negates the need for 24 hour urine studies when screening for multiple myeloma; once diagnosis of a plasma cell disorder is made, 24 hour urine studies are required for all patients. Second, the FLC assay is of major prognostic value in virtually every plasma cell disorder, including monoclonal gammopathy of undetermined significance, smoldering myeloma, active myeloma, immunoglobulin light chain amyloidosis (AL) and solitary plasmacytoma. Third, the FLC assay allows for quantitative monitoring of patients with oligosecretory plasma cell disorders, including patients with AL, oligosecretory myeloma, and nearly two-thirds of patients who had previously been deemed to have non-secretory myeloma. In AL patients and patients with oligosecretory myeloma, measurement of FLC is essential. The FLC assay cannot replace the 24 hour urine protein electrophoresis for monitoring myeloma patients with measurable urinary M-proteins. Fourth, the rFLC a requirement for documenting stringent complete response according the International Response Criteria.

Although the serum FLC is a valuable assay in patients with plasma cell disorders, there are technical limitations of the assay which make its uses as a serial measurement potentially problematic including: lot-to-lot variation; assay imprecision; and instances in which they do not dilute in a linear fashion. The most important area for future investigation includes defining the clinical relevance of early FLC “response” or “relapse” in patients with measurable intact serum immunoglobulins or measurable urinary M proteins. Apart from initial diagnosis and documentation of stringent complete response, its use is not advocated in these patients.

**\*International Myeloma Working Group:**

Ray Alexanian, MD Anderson, Houston, Texas, USA

Kenneth Anderson, DFCI, Boston, Massachusetts, USA

Michael Attal, Purpan Hospital, Toulouse, France

Herve Avet-Loiseau, Institute de Biologie, Nantes, France

Ashraf Badros, University of Maryland, Baltimore, Maryland, USA

Leif Bergsagel, Mayo Clinic Scottsdale, Scottsdale, Arizona, USA

Joan Bladé, Hospital Clinica, Barcelona, Spain

Bart Barlogie, M.I.R.T. UAMS Little Rock, Arkansas, USA

Regis Batille, Institute de Biologie, Nantes, France

Meral Beksac, Ankara University, Ankara, Turkey

Andrew Belch, Cross Cancer Institute, Alberta, Canada

Bill Bensinger, Fred Hutchinson Cancer Center, Seattle, Washington, USA

Mario Boccadoro, University of Torino, Torino, Italy

Michele Cavo, Universita di Bologna, Bologna, Italy

Wen Ming Chen, MM Research Center of Beijing, Beijing, China

Tony Child, Leeds General Hospital, Leeds, United Kingdom

James Chim, Department of Medicine, Queen Mary Hospital, Hong Kong

Ray Comenzo, Memorial Sloane-Kettering, New York City, New York, USA

John Crowley, Cancer Research and Biostatistics, Seattle, Washington, USA

William Dalton, H. Lee Moffitt, Tampa, Florida, USA

Faith Davies, Royal Marsden Hospital, London, England

Cármino de Souza, Univeridade de Campinas, Caminas, Brazil

Michel Delforge, University Hospital Gasthuisberg, Leuven, Belgium

Meletios Dimipoulous, Alexandra Hospital, Athens, Greece

Angela Dispenzieri, Mayo Clinic, Rochester, Minnesota, USA

Hermann Einsele, Universitätsklinik Würzburg, Würzburg, Germany

Theirry Facon, Centre Hospitalier Regional Universitaire de Lille, Lille, France

Dorotea Fantl, Socieded Argentinade Hematolgia, Buenos Aires, Argentina

Jean-Paul Femand, Hopitaux de Paris, Paris, France

Rafael Fonseca, Mayo Clinic Scottsdale, Scottsdale, Arizona, USA

Gosta Gahrton, Karolinska Institute for Medicine, Huddinge, Sweden

Morie Gertz, Mayo Clinic, Rochester, Minnesota, USA

John Gibson, Royal Prince Alfred Hospital, Sydney, Australia

Hartmut Goldschmidt, University Hospital Heidelberg, Heidelberg, Germany

Philip Greipp, Mayo Clinic, Rochester, Minnesota, USA

Roman Hajek, Brno University, Brno, Czech Republic

Izhar Hardan, Tel Aviv University, Tel Aviv, Israel

Jean-Luc Harousseau, Institute de Biologie, Nantes, France

Hiroyuki Hata, Kumamoto University Hospital, Kumamoto, Japan

Yutaka Hattori, Keio University School of Medicine, Tokyo, Japan

Joy Ho, Royal Prince Alfred Hospital, Sydney, Australia

Vania Hungria, Clinica San Germano, Sao Paolo, Brazil

Mohamad Hussein, Cleveland Clinic Taussig Cancer Center, Cleveland, Ohio, USA

Shinsuke Ida, Nagoya City University Medical School, Nagoya, Japan

Peter Jacobs, Constantiaberg Medi-Clinic, Plumstead, South Africa



Sundar Jagannath, St. Vincent's Comprehensive Cancer Center, New York, New York, USA

Hou Jian, Shanghai Chang Zheng Hospital, Shanghai, China

Douglas Joshua, Royal Prince Alfred Hospital, Sydney, Australia

Michio Kawano, Yamaguchi University, Ube, Japan

Shaji Kumar, Department of Hematology, Mayo Clinic, Minnesota, USA

Robert Kyle, Department of Laboratory Med. and Pathology, Mayo Clinic, Minnesota, USA

Juan Lahuerta, Grupo Espanol di Mieloma, Hospital Universitario, Madrid, Spain

Jae Hoon Lee, Gachon University Gil Hospital, Incheon, Korea

Henk Lokhorst, University Medical Center Utrecht, Utrecht, The Netherlands

Heinz Ludwig, Wilhelminenspital Der Stat Wien, Vienna, Austria

Xavier LeLeu, Hospital Huriez, CHRU Lille, France

Angelo Maiolino, Rua fonte da Saudade, Rio de Janeiro, Brazil

Jayesh Mehta, Northwestern University, Chicago, Illinois, USA

GianPaolo Merlini, University of Pavia, Pavia, Italy

Philippe Moreau, University Hospital, Nantes, France

Gareth Morgan, Royal Marsden Hospital, London, England

Nikhil Munshi, Diane Farber Cancer Institute, Boston, Massachusetts, USA

Antonio Palumbo, Cathedra Ematologia, Torino, Italy

Santiago Pavlovsky, Fundaleu, Buenos Aires, Argentina

Ruben Niesvizky, Weill Medical College of Cornell University, New York, New York, USA

Yana Novis, Hospital SírioLibanês, Bela Vista, Brazil

Amara Nouel, Hospital Rutz y Paez, Bolivar, Venezuela

Raymond Powles, Leukaemia & Myeloma, Wimbledon, England

Linda Pilarski, University of Alberta, Alberta, Canada

S. Vincent Rajkumar, Mayo Clinic, Rochester, Minnesota, USA

Donna Reece, Princess Margaret, Toronto, Canada

Tony Reiman, Cross Cancer Institute, Alberta, Canada

Paul Richardson, Dana Farber Cancer Institute, Boston, Massachusetts, USA

Angelina Rodriguez Morales, Bonco Metro Politano de Sangre, Caracas, Venezuela

Orhan Sezer, Department of Hem/Onc, Universitätsklinikum Charite, Berlin, Germany

John Shaughnessy, M.I.R.T. UAMS, Little Rock, Arkansas, USA

Kazayuki Shimizu, Nagoya City Midori General Hospital, Nagoya, Japan

David Siegel, Hackensack, Cancer Center, Hackensack, New Jersey, USA

Guido Tricot, M.I.R.T. UAMS, Little Rock, Arkansas, USA

Jesus San Miguel, University of Salamanca, Salamanca, Spain

Seema Singhal, Northwestern University, Chicago, Illinois, USA

Pieter Sonneveld, Erasmus MC, Rotterdam, The Netherlands

Chaim Shustik, McGill, Toronto, Canada

Andrew Spencer, The Alfred Hospital, Melbourne, Australia

Keith Stewart, Mayo Clinic Scottsdale, Scottsdale, Arizona, USA

Patrizia Tosi, Italian Cooperative Group, Istituto di Ematologia Seragnoli, Bologna, Italy

Ingemar Turesson, Department of Hematology, Malmo University, Malmo, Sweden

Brian Van Ness, University of Minnesota, Minneapolis, Minnesota, USA

Ivan Van Riet, Brussels Vrija University, Brussels, Belgium

Robert Vescio, Cedars-Sinai Outpatient Cancer Center, Los Angeles, California, USA

David Vesole, St. Vincent's Comprehensive Cancer Center, New York, New York, USA

Anders Waage, University Hospital, Trondheim, Norway NSMG

Michael Wang, M.D. Anderson, Houston, Texas, USA

Donna Weber, MD Anderson, Houston, Texas, USA

Jan Westin, University of Lund, Lund, Sweden

Keith Wheatley, University of Birmingham, Birmingham, United Kingdom

Dina B. Yehuda, Department of Hematology, Hadassah University Hospital, Hadassah, Israel

Jeffrey Zonder, SWOG, Department of Hem/Onc., Karmanos Cancer Institute, Michigan, USA

## References

1. Bradwell AR, Carr-Smith HD, Mead GP, Tang LX, Showell PJ, Drayson MT, et al. Highly sensitive, automated immunoassay for immunoglobulin free light chains in serum and urine. *Clin Chem* 2001; **47**:673-680.
2. Bradwell AR. Serum free light chain measurements move to center stage. *Clin Chem* 2005; **51**:805-807.
3. Bradwell AR, Carr-Smith HD, Mead GP, Harvey TC, Drayson MT. Serum test for assessment of patients with Bence Jones myeloma. *Lancet* 2003; **361**:489-491.
4. Katzmann JA, Clark RJ, Abraham RS, Bryant S, Lymp JF, Bradwell AR, et al. Serum reference intervals and diagnostic ranges for free kappa and free lambda immunoglobulin light chains: relative sensitivity for detection of monoclonal light chains. *Clin Chem* 2002; **48**:1437-1444.
5. Nakano T, Nagata A. ELISAs for free light chains of human immunoglobulins using monoclonal antibodies: comparison of their specificity with available polyclonal antibodies. *J Immunol Methods* 2003; **275**:9-17.
6. Tate JR, Mollee P, Dimeski G, Carter AC, Gill D. Analytical performance of serum free light-chain assay during monitoring of patients with monoclonal light-chain diseases. *Clin Chim Acta* 2007; **376**:30-36.
7. Daval S, Tridon A, Mazon N, Ristori JM, Evrard B. Risk of antigen excess in serum free light chain measurements. *Clin Chem* 2007; **53**:1985-1986.
8. Le Bricon T, Bengoufa D, Benlakehal M, Bousquet B, Erlich D. Urinary free light chain analysis by the Freelite immunoassay: a preliminary study in multiple myeloma. *Clin Biochem* 2002; **35**:565-567.

9. Katzmann JA, Dispenzieri A, Kyle RA, Snyder MR, Plevak MF, Larson DR, et al. Elimination of the need for urine studies in the screening algorithm for monoclonal gammopathies by using serum immunofixation and free light chain assays. *Mayo Clin Proc* 2006; **81**:1575-1578.
10. Beetham R, Wassell J, Wallage MJ, Whiteway AJ, James JA. Can serum free light chains replace urine electrophoresis in the detection of monoclonal gammopathies? *Ann Clin Biochem* 2007; **44**:516-522.
11. Katzmann JA, Abraham RS, Dispenzieri A, Lust JA, Kyle RA. Diagnostic Performance of Quantitative {kappa} and {lambda} Free Light Chain Assays in Clinical Practice. *Clin Chem* 2005; **51**:878-881.
12. Nowrousian MR, Brandhorst D, Sammet C, Kellert M, Daniels R, Schuett P, et al. Serum free light chain analysis and urine immunofixation electrophoresis in patients with multiple myeloma. *Clin Cancer Res* 2005; **11**:8706-8714.
13. Hill PG, Forsyth JM, Rai B, Mayne S. Serum free light chains: an alternative to the urine Bence Jones proteins screening test for monoclonal gammopathies. *Clin Chem* 2006; **52**:1743-1748.
14. Abadie JM, Bankson DD. Assessment of serum free light chain assays for plasma cell disorder screening in a Veterans Affairs population. *Ann Clin Lab Sci* 2006; **36**:157-162.
15. Kang SY, Suh JT, Lee HJ, Yoon HJ, Lee WI. Clinical usefulness of free light chain concentration as a tumor marker in multiple myeloma. *Ann Hematol* 2005; **84**:588-593.
16. Bakshi NA, Gulbranson R, Garstka D, Bradwell AR, Keren DF. Serum free light chain (FLC) measurement can aid capillary zone electrophoresis in detecting subtle FLC-producing M proteins. *Am J Clin Pathol* 2005; **124**:214-218.

17. Marien G, Oris E, Bradwell AR, Blanckaert N, Bossuyt X. Detection of monoclonal proteins in sera by capillary zone electrophoresis and free light chain measurements. *Clin Chem* 2002; **48**:1600-1601.
18. Kumar S, Fonseca R, Dispenzieri A, Katzmann JA, Kyle RA, Clark R, et al. High Incidence of IgH Translocations in Monoclonal Gammopathies with Abnormal Free Light Chain Levels. *ASH Annual Meeting Abstracts* 2006; **108**:3514.
19. Dispenzieri A, Lacy MQ, Katzmann JA, Rajkumar SV, Abraham RS, Hayman SR, et al. Absolute values of immunoglobulin free light chains are prognostic in patients with primary systemic amyloidosis undergoing peripheral blood stem cell transplantation. *Blood* 2006; **107**:3378-3383.
20. van Rhee F, Bolejack V, Hollmig K, Pineda-Roman M, Anaissie E, Epstein J, et al. High serum-free light chain levels and their rapid reduction in response to therapy define an aggressive multiple myeloma subtype with poor prognosis. *Blood* 2007; **110**:827-832.
21. Rajkumar SV, Kyle RA, Therneau TM, Melton LJ, 3rd, Bradwell AR, Clark RJ, et al. Serum free light chain ratio is an independent risk factor for progression in monoclonal gammopathy of undetermined significance. *Blood* 2005; **106**:812-817.
22. Dispenzieri A, Kyle RA, Katzmann JA, Therneau TM, Larson D, Benson J, et al. Immunoglobulin free light chain ratio is an independent risk factor for progression of smoldering (asymptomatic) multiple myeloma. *Blood* 2008; **111**:785-789.
23. Kyle RA, Remstein E, Therneau TM, Dispenzieri A, Kurtin PJ, Hodnefield J, et al. Clinical Course and Prognosis of Smoldering (Asymptomatic) Multiple Myeloma. *New England Journal of Medicine* 2007; **356**:2582-2590.

24. Dingli D, Kyle RA, Rajkumar SV, Nowakowski GS, Larson DR, Bida JP, et al.  
Immunoglobulin free light chains and solitary plasmacytoma of bone. *Blood* 2006; **108**:1979-1983.
25. Kyrtsolis MC, Vassilakopoulos TP, Kafasi N, Sachanas S, Tzenou T, Papadogiannis A, et al.  
Prognostic value of serum free light chain ratio at diagnosis in multiple myeloma. *Br J Haematol* 2007; **137**:240-243.
26. Snozek CL, Katzmann JA, Kyle RA, Dispenzieri A, Larson DR, Therneau TM, et al.  
Prognostic value of the serum free light chain ratio in patients with newly diagnosed myeloma and proposed incorporation into the International Staging System. *Leukemia*, In Press.
27. Dispenzieri A, Zhang L, Katzmann JA, Snyder M, Blood E, DeGoey R, et al. Appraisal of immunoglobulin free light chain as a marker of response. *Blood* 2008; **111**:4908-4915.
28. Greipp PR, San Miguel J, Durie BG, Crowley JJ, Barlogie B, Blade J, et al. International staging system for multiple myeloma. *J Clin Oncol* 2005; **23**:3412-3420.
29. Lachmann HJ, Gallimore R, Gillmore JD, Carr-Smith HD, Bradwell AR, Pepys MB, et al.  
Outcome in systemic AL amyloidosis in relation to changes in concentration of circulating free immunoglobulin light chains following chemotherapy. *Br J Haematol* 2003; **122**:78-84.
30. Palladini G, Lavatelli F, Russo P, Perlini S, Perfetti V, Bosoni T, et al. Circulating amyloidogenic free light chains and serum N-terminal natriuretic peptide type B decrease simultaneously in association with improvement of survival in AL. *Blood* 2006; **107**:3854-3858.

31. Sanchorawala V, Seldin DC, Magnani B, Skinner M, Wright DG. Serum free light-chain responses after high-dose intravenous melphalan and autologous stem cell transplantation for AL (primary) amyloidosis. *Bone Marrow Transplant* 2005; **36**:597-600.
32. Gertz MA, Comenzo R, Falk RH, Fermand JP, Hazenberg BP, Hawkins PN, et al. Definition of organ involvement and treatment response in immunoglobulin light chain amyloidosis (AL): a consensus opinion from the 10th International Symposium on Amyloid and Amyloidosis, Tours, France, 18-22 April 2004. *Am J Hematol* 2005; **79**:319-328.
33. Durie BG, Harousseau JL, Miguel JS, Blade J, Barlogie B, Anderson K, et al. International uniform response criteria for multiple myeloma. *Leukemia* 2006; **20**:1467-1473.
34. Cohen AD, Zhou P, Chou J, Teruya-Feldstein J, Reich L, Hassoun H, et al. Risk-adapted autologous stem cell transplantation with adjuvant dexamethasone +/- thalidomide for systemic light-chain amyloidosis: results of a phase II trial. *Br J Haematol* 2007; **139**:224-233.
35. Blade J, Samson D, Reece D, Apperley J, Bjorkstrand B, Gahrton G, et al. Criteria for evaluating disease response and progression in patients with multiple myeloma treated by high-dose therapy and haemopoietic stem cell transplantation. Myeloma Subcommittee of the EBMT. European Group for Blood and Marrow Transplant. *British Journal of Haematology* 1998; **102**:1115-1123.
36. Drayson M, Tang LX, Drew R, Mead GP, Carr-Smith H, Bradwell AR. Serum free light-chain measurements for identifying and monitoring patients with nonsecretory multiple myeloma. *Blood* 2001; **97**:2900-2902.



37. Abraham RS, Clark RJ, Bryant SC, Lymp JF, Larson T, Kyle RA, et al. Correlation of serum immunoglobulin free light chain quantification with urinary Bence Jones protein in light chain myeloma. *Clin Chem* 2002; **48**:655-657.
38. Singhal S, Stein R, Vickrey E, Mehta J. The serum-free light chain assay cannot replace 24-hour urine protein estimation in patients with plasma cell dyscrasias. *Blood* 2007; **109**:3611-3612.
39. Mead GP, Carr-Smith HD, Drayson MT, Morgan GJ, Child JA, Bradwell AR. Serum free light chains for monitoring multiple myeloma. *Br J Haematol* 2004; **126**:348-354.
40. Hajek R, Cermakova Z, Pour L, Novontna H, Maisnar V, Tichy M, et al. Free light chain assays for early detection of resistance to bortezomib-based regimens. *Haematologica* 2007; **92**:93.
41. Hassoun H, Reich L, Klimek VM, Dhodapkar M, Cohen A, Kewalramani T, et al. Doxorubicin and dexamethasone followed by thalidomide and dexamethasone is an effective well tolerated initial therapy for multiple myeloma. *Br J Haematol* 2006; **132**:155-161.
42. Dawson MA, Patil S, Spencer A. Extramedullary relapse of multiple myeloma associated with a shift in secretion from intact immunoglobulin to light chains. *Haematologica* 2007; **92**:143-144.
43. Abraham RS, Katzmann JA, Clark RJ, Bradwell AR, Kyle RA, Gertz MA. Quantitative analysis of serum free light chains. A new marker for the diagnostic evaluation of primary systemic amyloidosis. *Am J Clin Pathol* 2003; **119**:274-278.

## Figure Legends

### Figure 1. Immunoglobulin free light chain assay.

- A. Shows the location of the hidden light chain determinants in the intact immunoglobulin model.
- B. Shows the location of the hidden light chain determinants in the free light chain model.

### Figure 2. Risk of progression to symptomatic myeloma or related disorder.

- A. In 1148 patients with MGUS based on abnormal rFLC ( $<0.26$  or  $>1.66$ ). (Rajkumar SV, Kyle RA, Therneau TM, et al. Serum free light chain ratio is an independent risk factor for progression in monoclonal gammopathy of undetermined significance. *Blood*. 2005;106:812-817).
- B. In 1148 patients with MGUS using a risk-stratification model that incorporates rFLC and the size and type of serum monoclonal protein. The 3 risk factors include: abnormal rFLC ( $<0.26$  or  $>1.66$ ); serum monoclonal protein of  $\geq 15\text{g/L}$ ; and non-IgG MGUS. (Rajkumar SV, Kyle RA, Therneau TM, et al. Serum free light chain ratio is an independent risk factor for progression in monoclonal gammopathy of undetermined significance. *Blood*. 2005;106:812-817).
- C. In 273 patients with smoldering (asymptomatic) multiple myeloma based on rFLC  $<0.125$  or  $>8$  ( $<1:8$  or  $>8:1$ ) (Dispenzieri A, Kyle RA, Katzmann JA, et al. Immunoglobulin free light chain ratio is an independent risk factor for progression of smoldering (asymptomatic) multiple myeloma. *Blood*. 2008;111:785-789).

D. In 273 patients with smoldering (asymptomatic) multiple myeloma using a risk-stratification model that incorporates abnormal rFLC ( $<0.125$  or  $>8$ ), the size of serum monoclonal protein (greater than or equal to 30 g/L) and extent of bone marrow plasmacytosis (greater than or equal to 10%). (Dispenzieri A, Kyle RA, Katzmann JA, et al. Immunoglobulin free light chain ratio is an independent risk factor for progression of smoldering (asymptomatic) multiple myeloma. *Blood*. 2008;111:785-789).

**Figure 3. Overall survival in patients with newly diagnosed symptomatic myeloma based on baseline FLC measurement.**

A. Overall survival based on rFLC thresholds in 94 patients. ‘High rFLC’ for patients with clonal kappa or lambda disease was 3.6 and 0.02, respectively. (Kyrtsolis MC, Vassilakopoulos TP, Kafasi N, et al. Prognostic value of serum free light chain ratio at diagnosis in multiple myeloma. *Br J Haematol*. 2007;137:240-243.)

B. Overall survival based on baseline iFLC terciles in 301 patients undergoing Total Therapy 3. Highest tercile (greater than 750 mg/L) was associated with worse overall survival (van Rhee F, Bolejack V, Hollmig K, et al. High serum-free light chain levels and their rapid reduction in response to therapy define an aggressive multiple myeloma subtype with poor prognosis. *Blood*. 2007;110:827-832.)

C. Event free survival based on baseline iFLC terciles in 301 patients undergoing Total Therapy 3. Highest tercile (greater than 750 mg/L) was associated with worse overall survival (van Rhee F, Bolejack V, Hollmig K, et al. High serum-free light chain levels and their rapid reduction in response to therapy define an aggressive multiple myeloma subtype with poor prognosis. *Blood*. 2007;110:827-832.)

D. Risk stratification model using elements of the international staging system (ISS) and extreme values of rFLC adds in 790 patients diagnosed with active MM between 1995 and 1998.

Patients were assigned 1 point for each of the following: abnormal rFLC ( $<0.03$  or  $>32$ ); high Sb2M ( $\geq 3.5$  g/L); or low serum albumin ( $<3.5$  g/dL). (Snozek CL, Katzmann JA, Kyle RA, et al. Prognostic value of the serum free light chain ratio in patients with newly diagnosed myeloma and proposed incorporation into the International Staging System Submitted.)

**Figure 4. Free light chain response is a better predictor of overall survival than is immunofixation electrophoresis response.**

Dispenzieri A, Lacy MQ, Katzmann JA, et al. Absolute values of immunoglobulin free light chains are prognostic in patients with primary systemic amyloidosis undergoing peripheral blood stem cell transplantation. *Blood*. 2006;107:3378-3383.

**Table 1. Rates of abnormal FLC ratio in different plasma cell disorders**

<b>Disease</b>	<b>n</b>	<b>Abn rFLC, %</b>
Multiple myeloma (MM)		
Symptomatic MM <sup>26</sup>	790	95
Symptomatic MM <sup>39</sup>	456	96
Symptomatic MM <sup>15</sup>	61	97
Symptomatic MM <sup>27</sup>	399	96
Non secretory MM <sup>36</sup>	28	68
Non secretory MM <sup>11</sup>	5	100
Light chain MM <sup>3</sup>	224	100
Light chain MM <sup>37</sup>	28	100
Smoldering MM <sup>11</sup>	72	88
Smoldering MM <sup>22</sup>	273	90
MGUS <sup>21</sup>	1148	33
MGUS <sup>11</sup>	114	44
Amyloidosis <sup>43</sup>	95	92
Amyloidosis <sup>29</sup>	262	98
Amyloidosis <sup>11</sup>	110	91
Light chain deposition disease <sup>11</sup>	28	93

FLC, immunoglobulin free light chain; rFLC, FLC ratio; Abn, abnormal; MGUS, monoclonal gammopathy of undetermined significance

**Table 2. Four-hundred and twenty-eight patients with urinary monoclonal protein detected by immunofixation electrophoresis<sup>9</sup>**

LABORATORY TEST	% ABNORMAL
Serum immunofixation electrophoresis	93.5
Serum protein electrophoresis	80.8
Serum FLC $\kappa/\lambda$ ratio	85.7
Serum immunofixation electrophoresis or FLC ratio	99.5

Table 3. Technical limitations of the FLC assay.

<b>Limitation</b>	<b>Comment</b>
Lot to lot variability of reagent	Coefficient of variability ~10-20%
Antigen excess	Actual quantity can be drastically underestimated
Unrecognizable epitopes	Uncommon
Extreme polymerization	Uncommon

**Table 4: Uses of serum immunoglobulin free light chain assay**

<b><i>SCREENING IN COMBINATION WITH IMMUNOFIXATION ELECTROPHORESIS<sup>9</sup></i></b>
<b><i>BASELINE VALUES PROGNOSTIC</i></b>
Monoclonal gammopathy of undermined significance <sup>21</sup>
Smoldering myeloma <sup>22</sup>
Symptomatic myeloma <sup>20,25-27</sup>
Plasmacytoma <sup>24</sup>
AL amyloidosis <sup>19</sup>
<b><i>HEMATOLOGIC RESPONSE</i></b>
AL amyloidosis <sup>19,29-32</sup>
“Non-secretory” myeloma <sup>*36</sup>
Stringent complete response in multiple myeloma <sup>*33</sup>
Light chain deposition disease (Personal experience of authors)

\*Not yet validated



**Table 5: Response Criteria for FLC<sup>32,33</sup>**

	Minimum to be deemed measurable	PR	CR	sCR	Progression
AL <sup>32</sup> without measurable <sup>1</sup> serum or urine M protein	iFLC $\geq$ 100 mg/L	50% reduction of iFLC	Normal rFLC & CR by IFE & bone marrow	ND	50% increase of iFLC to $>$ 100 mg/L
AL <sup>32</sup> with measurable <sup>1</sup> serum or urine M protein	ND	ND	ND	ND	ND
MM <sup>33</sup> without measurable <sup>1</sup> serum or urine M protein	iFLC $\geq$ 100 mg/L and rFLC abnormal	50% reduction of dFLC	ND	Normal rFLC & CR by IFE and bone marrow	50% increase of dFLC
MM with measurable disease <sup>27,33</sup>	Use of FLC not recommended	Use of FLC not recommended	Use of FLC not recommended	Normal rFLC & CR by IFE and bone marrow	Use of FLC not recommended

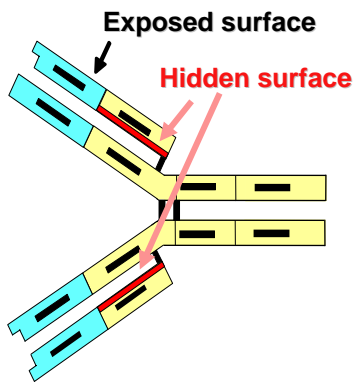
iFLC, involved free light chain, i.e.  $\kappa$  for a patient with  $\kappa$  restricted disease and  $\lambda$  for a patient with  $\lambda$  restricted disease; dFLC, difference between iFLC and uninvolved FLC; ND, not defined

<sup>1</sup> Measurable M protein includes serum M-protein of at least 1 g/dL or a urine M-protein of at least 200 mg/24 hours for myeloma patients (100 mg/24 hours for AL patients).

Figure 1

A

### Intact Immunoglobulin



B

### Free Light Chain

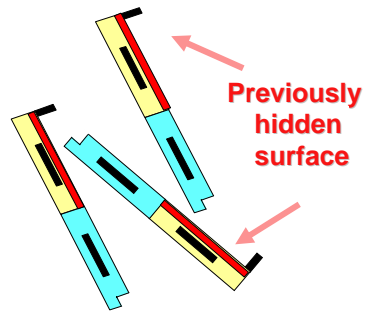


Figure 2

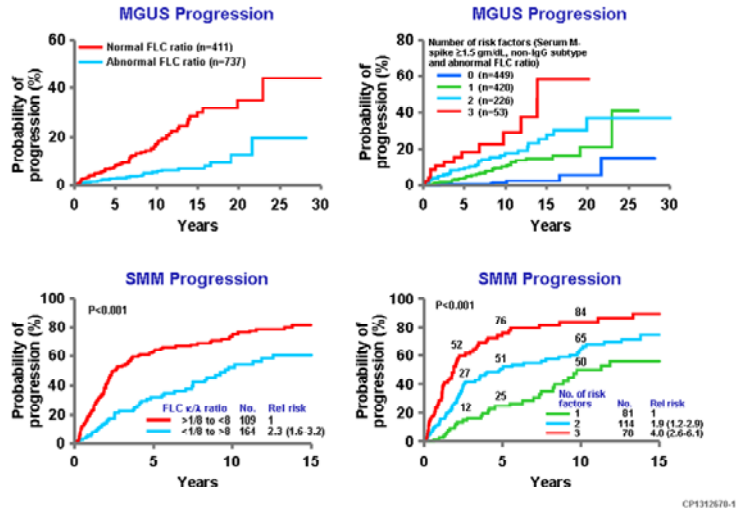


Figure 3

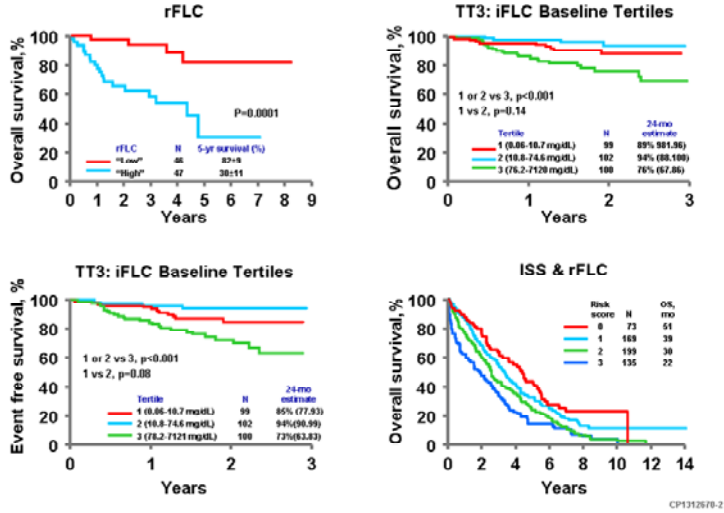
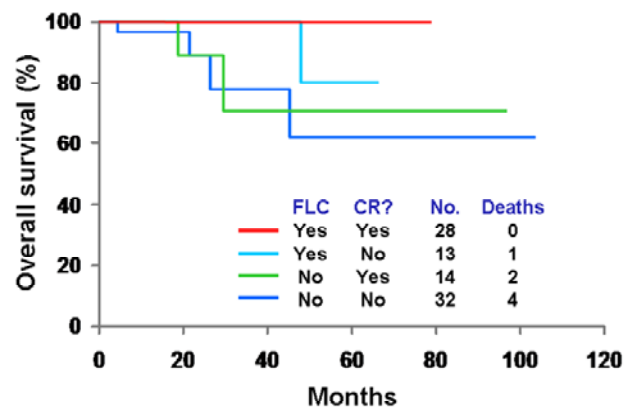


Figure 4



CP1312670-3