

Received February 4, 2019, accepted March 3, 2019, date of publication March 7, 2019, date of current version March 25, 2019.

Digital Object Identifier 10.1109/ACCESS.2019.2903723

# Intrusion Detection for IoT Based on Improved Genetic Algorithm and Deep Belief Network

YING ZHANG<sup>1</sup> , PEISONG LI<sup>1</sup>, AND XINHENG WANG<sup>2</sup> 

<sup>1</sup>College of Information Engineering, Shanghai Maritime University, Shanghai 201306, China

<sup>2</sup>School of Computing and Engineering, University of West London, London W5 5RF, U.K.

Corresponding author: Ying Zhang (yingzhang@shmtu.edu.cn)

This work was supported by the National Natural Science Foundation of China, under Grant 61673259.

**ABSTRACT** With the advent of the Internet of Things (IoT), the security of the network layer in the IoT is getting more and more attention. The traditional intrusion detection technologies cannot be well adapted in the complex Internet environment of IoT. For the deep learning algorithm of intrusion detection, a neural network structure may have fine detection accuracy for one kind of attack, but it may not have a good detection effect when facing other attacks. Therefore, it is urgent to design a self-adaptive model to change the network structure for different attack types. This paper presents an intrusion detection model based on improved genetic algorithm (GA) and deep belief network (DBN). Facing different types of attacks, through multiple iterations of the GA, the optimal number of hidden layers and number of neurons in each layer are generated adaptively, so that the intrusion detection model based on the DBN achieves a high detection rate with a compact structure. Finally, the NSL-KDD dataset was used to simulate and evaluate the model and algorithms. The experimental results show that the improved intrusion detection model combined with DBN can effectively improve the recognition rate of intrusion attacks and reduce the complexity of the neural network structure.

**INDEX TERMS** Internet of Things security, intrusion detection, deep belief network, genetic algorithm.

## I. INTRODUCTION

With the rapid development, Internet of Things (IoT) technology has been widely used, from traditional equipment to common household appliances, which has greatly improved our quality of life [1].

However, IoT systems have become an ideal target of cyber attackers because of its distributed nature, large number of objects and openness [2]–[5]. In addition, because many IoT nodes collect, store and process private information, they are the apparent targets for malicious attackers [6]. Therefore, to maintain the security of the IoT system is becoming a priority of the successful deployment of IoT networks [7].

To detect intruders is one important step in ensuring the security of the IoT networks. Intrusion detection is one of the several security mechanisms for managing security intrusions, which can be detected in any of four layers of IoT architecture shown in Fig. 1. The Network Layer not only serves as a backbone for connecting different IoT devices, but also provides opportunities for deploying network-based security

defense mechanisms such as Network Intrusion Detection Systems (NIDS) [8].

There are many intrusion detection methods, such as the methods based on statistical analysis [9], cluster analysis [10], artificial neural network [11] or deep learning [12]. Among these methods, intrusion detection based on deep learning performs better than other methods [13]. The reason is that deep learning has strong abilities, such as self-learning, self-adaptation, good generalization, and detection against unknown attack behavior. Compared with traditional deep learning algorithms, deep belief network (DBN) has the advantages of multi-layer structure and pre-training with fine-tuning learning methods. Therefore, DBN can be used to identify features and classify data in intrusion detection system.

For the deep learning algorithm, a network structure may have a great detection accuracy for one attack type, but it may not have a good detection effect while facing other attacks. Therefore, we hope to design a self-adaptive model to change the neural network structure for different attack types, so that our intrusion detection model can maintain a high detection rate continuously.

The associate editor coordinating the review of this manuscript and approving it for publication was Luis Javier Garcia Villalba.

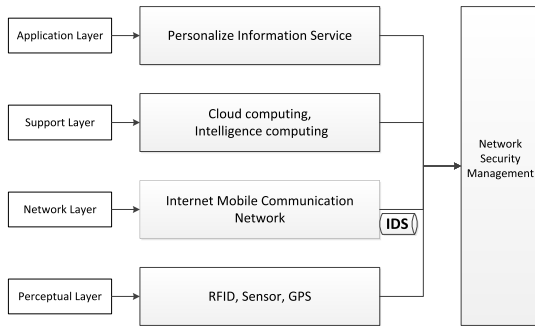


FIGURE 1. IoT architecture.

In the past few years, there has been very little research on the optimization of the IoT intrusion detection model based on deep learning. And, there has not been a unified solution for the selection of the number of hidden layers and the number of neurons for each layer. Most of the research is based on trial and error, pruning or constructive methods [14], the network structure and the performance cannot be guaranteed. The random selection of the number of hidden neurons might cause some problems.

A new IoT intrusion detection model is proposed in this paper by introducing genetic algorithm into deep belief network to optimize the number of hidden layers and neurons in a hidden layer. By applying the improved genetic algorithm, for different types of attacks, the optimal number of hidden layers and neurons in a hidden layer can be iteratively generated, and the network complexity can be reduced as much as possible while ensuring the detection rate. The solution of these two problems of deep learning network can make the intrusion detection system have a greater improvement in performance. Therefore, after the number of hidden layers and the number of neurons in each layer in DBN are determined, the DBN with the obtained most optimal network structure will be used for intrusion detection.

In this paper, we will firstly introduce the related work of intrusion detection based on machine learning in Section II. Then we will introduce the proposed algorithm model in Section III. In Section IV, we show the experimental results and comparison with other methods. This paper is concluded in Section V.

## II. RELATED WORK

The intrusion detection technology based on machine learning method can be divided into two major categories: intrusion detection based on artificial neural networks and intrusion detection based on deep learning [15].

Intrusion detection based on artificial neural network is generally divided into three sub-categories of neural networks: supervised, unsupervised and hybrid learning. The main type of supervised neural networks are multilayer feed-forward (MLFF) neural networks. Ryan *et al.* [16] used MLFF neural network to detect anomaly based on user behavior. However, supervised neural networks depend on training

of a large number of data sets. Sometimes the distribution of training data sets is not balanced, which makes the MLFF neural network easily reach the local minimum value, and thus the stability is low. Detection rate of low-frequency attack is a key factor in judging the quality of the detection model. The detection accuracy of MLFF neural network is low for low-frequency attacks.

The main advantage of the unsupervised artificial neural networks is that new data can be analyzed without tagging data in advance. Yu and Parekh [17] introduced a theoretical foundation for combining individual detectors with Bayesian classifier combination. This ensemble is fully unsupervised and does not require labeled training data, which in most practical situations is hard to obtain. The Self-Organizing Feature Map (SOM) used in [18] is an unsupervised learning method that extracts features from normal system activity and identifies statistical changes from normal trends. However, for low-frequency attacks, the detection accuracy of unsupervised neural network is also low.

The third category is the hybrid neural network, e.g., FC-ANN proposed in [19] is such a model. The FC-ANN method introduces fuzzy clustering techniques into general artificial neural networks. Using fuzzy clustering techniques, the entire training set can be divided into small, low-complex subsets. Therefore, based on these subsets, the stability of the individual neural network can be improved and the detection accuracy can be improved as well, especially for the detection of low-frequency attacks. Ma *et al.* [20] proposed a novel approach called SCDNN, which combines spectral clustering (SC) and deep neural network (DNN) algorithms. It provides an effective tool of study and analysis of intrusion detection in large networks. Chiba *et al.* [21] proposed a cooperative and hybrid network intrusion detection system (CH-NIDS) to detect the attacks by sensing the network traffic. In [22], based on Back Propagation neural networks (BPNN), a discussion was made on the selection of the number of hidden layers. It is believed that the training set must be analyzed before the design of the neural network to correctly estimate the similarity between the number of neurons and the number of hidden layers.

At present, there are many intrusion detection technologies based on deep learning. Yin *et al.* [23] proposed a deep learning approach for intrusion detection using recurrent neural networks (RNN-IDS) which is suitable for high-precision classification modeling. Abolhasanzadeh [24] proposed a method for detecting attacks in big data using Deep Auto-Encoder. Gao *et al.* [25] trained the DBN as a classifier to detect intrusions. Similarly, Alom *et al.* [26] also utilized the capabilities of DBN to detect intrusions through a series of experiments.

However, the above articles mainly select the specific network structure through many attempts, and these methods are random and irregular. The selected network structure may not be optimal and suitable for complex network environment.

DBN has the advantages of multi-layer structure and pre-training with fine-tuning learning methods. These advantages

enable DBN to extract the deep attributes of training set, thus the main problems existing in the traditional neural network intrusion detection methods are solved, such as low training efficiency, easy to fall into the local optimum and the need of large amount of tagged data [27].

Many researchers put their effort in analyzing the solution to the problem that how many neurons are kept in the hidden layer in order to obtain the best result. Liu *et al.* [28] proposed a novel and effective criterion based on the estimation of the signal-to-noise-ratio figure (SNRF) to optimize the number of hidden neurons in the neural networks to avoid overfitting in the function approximation. Rivals and Personnaz [29] used techniques based on least squares estimation and statistical tests for estimating the number of neurons in the hidden layer. Mao and Huang [30] used a data structure preserving (DSP) algorithm to fix the hidden neuron, and it is an unsupervised neuron selection algorithm. Doukim *et al.* [31] proposed a technique to find the number of hidden neurons in an MLP network by using coarse-to-fine search technique, which is applied in skin detection. This technique includes binary search and sequential search. In [32], to fix hidden neurons, 101 various criteria are tested based on the statistical errors. At last the selected criterion for the NN model is  $(4n^2 + 3)/(n^2 - 8)$ , where  $n$  is the number of input parameters. The results show that the proposed model improves the accuracy and minimal error.

Genetic Algorithms (GA) is a method to search for an optimal solution by simulating natural evolution processes, but is often neglected when choosing the optimal network structure. In this paper, in order to solve the low detection rate and weak stability of the detection model caused by low-frequency attacks, we propose an intrusion detection model based on an improved GA and DBN. For different training types including low-frequency attacks and other types of attacks, the corresponding different network structures are obtained by iterative evolution through GA, thereby the detection rate is improved.

### III. THE PROPOSED INTRUSION DETECTION MODEL

This paper presents an intrusion detection model by a combined model with GA and DBN. Through multiple iterations of the GA, an optimal DBN structure is produced. The compact network structure contains the optimal numbers of hidden layers and the neurons in each layer. This structure is then applied to deep belief network for intrusion detection.

#### A. IMPROVED GENETIC ALGORITHM

Genetic Algorithm is known to be an ideal technique for finding optimal solutions to various problems.

##### 1) POPULATION INITIALIZATION

The purpose of initialization is to generate an initial population randomly for subsequent genetic manipulation. For a simple training set, up to three hidden layers are enough to get a good detection rate. Binary coding is the most common coding method in genetic algorithm, so we encode the number

of nodes in the three hidden layers directly in the binary chromosome. As shown in Fig. 2, the length of chromosome is 18 bits: the first 6 bits are reserved for the first hidden layer, the subsequent 7-12 bits and 13-18 bits are for the second and the third hidden layers respectively.

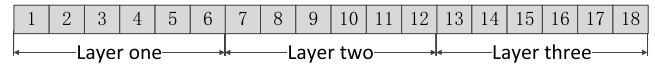


FIGURE 2. Chromosome schematic.

A chromosome represents a network structure, which has at most three hidden layers and at least one hidden layer. Each layer has 6 bits. The value of each bit is a binary number 0 or 1. The converted decimal number is the number of neurons in a layer. According to the rules of thumb, it is shown that an acceptable number of neurons in the hidden layer could be the size between the input layer and output layer. Therefore, when the population is initialized, we must ensure that the number of nodes in each layer is smaller than the number of input features and greater than the number of output features.

$$I \leq N \leq O \quad (1)$$

where  $I$  is the size of the input layer,  $O$  is the size of the output layer and  $N$  is the number of neurons in the hidden layer.

If a chromosome has two layers, then 1-6 bits and 7-12 bits are between 000010 and 101000. The 13-18 bits are 000000.

##### 2) IMPROVED SELECTION

The selection operation is to select excellent chromosomes from the current population and prepare for crossover and mutation. As the fitness of candidate individuals increases, the probability of being selected increases. In general, a method of roulette wheel selection based on proportional fitness assignment (also known as Monte Carlo method) is used.

However, one drawback of this method is that the selection based on the generated random number that may lead to some individuals with high fitness is eliminated. Therefore, we made an improvement: firstly, we will select the individuals with the greatest fitness value to ensure that they can enter the next stage, and then select the remaining individuals according to the method of roulette. This improvement ensures that the best individuals will not be eliminated.

The specific operations are as follows:

- (1) Calculate the fitness of each individual in the population  $f(i = 1, 2, \dots, M)$ ,  $M$  is the size of population;
- (2) The individual with the largest adaptation value enters the next stage directly;
- (3) Calculate the probability that each remaining individual is passed on to the next generation:

$$p(x_i) = \frac{f(x_i)}{\sum_{j=1}^N f(x_j)} \quad (2)$$

(4) Calculate the cumulative probability of each individual:

$$q_i = \sum_{j=1}^i p(x_j) \tag{3}$$

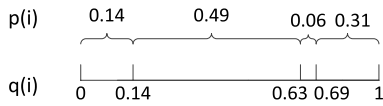


FIGURE 3. Cumulative probability.

- (5) Generate a uniformly distributed pseudo-random number  $r$  in the interval  $[0, 1]$ ;
- (6) If  $r < q(1)$ , select the individual 1, if not, select the individual  $k$  when  $q[k-1] < r \leq q[k]$ ;
- (7) Repeat (4)-(6)  $M-1$  times.

### 3) IMPROVED CROSSOVER

Crossover adopts the partially matched crossover (PMC), the traditional method is to exchange randomly selected segments from two adjacent chromosomes. However, the two adjacent chromosomes, selected by a roulette, are sometimes the same, so two chromosomes remain unchanged after the crossover operation, and thus this crossover operation has no effect. So we take the interval crossover, which is as shown in Eq. 4, for example, if we have  $n$  chromosomes, we cross the first one with  $(n/2 + 1)^{th}$ , the second one with  $(n/2 + 2)^{th}$ , and so on.

$$c = i^{th} \text{ cross with } (n/2 + i)^{th}, \quad i = 1, 2, \dots, n/2 \tag{4}$$

where  $c$  represents the individuals generated after the intersection.

To use this exchange method can avoid falling into a local optimum, thus the diversity of the next generation can be increased and the convergence rate can be accelerated. At the same time, another possibility is that the number of hidden layers of the intersecting individuals is different. For this case, we adopt the method of randomly selecting a common layer for both chromosomes to crossover. This is done to avoid the situation that the number of neurons in an intermediate hidden layer is 0. The method is demonstrated in Fig. 4:

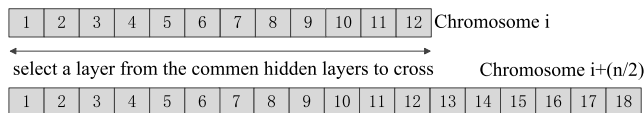


FIGURE 4. Crossing chromosomes with different hidden layers.

### 4) MUTATION

The mutation operation is to change a certain bit in the chromosome. It can use the random search ability of mutation operator. When the operation result is close to the optimal solution neighborhood, it can quickly converge to the optimal solution.

### 5) ELITE RETENTION STRATEGY

Crossover and mutation may lead to the loss of the optimal individuals in the next generation, and this phenomenon will occur in the evolutionary process frequently. In order to prevent the loss of the best individuals of the current population, which results in that the Genetic Algorithm cannot converge to the global optimal solution, an “elite retention” strategy is introduced in this paper. After each mutation operation, the best individual  $A$  in this generation is compared with the best individual  $B$  that has appeared in the evolution process so far. As shown in Eq. (3), If  $B$  is greater than  $A$ ,  $B$  replaces the worst individual in this generation and goes to the next generation,  $A$  goes to the next generation directly. If  $A$  is equal or greater than  $B$ ,  $A$  goes to the next generation directly. This process is shown in Eq. 5.

$$C = \begin{cases} A, & \text{if } A \geq B \\ B \text{ and } A, & \text{if } A < B \end{cases} \tag{5}$$

where  $C$  represents the one which goes to the next generation.

### B. SETTING OF FITNESS FUNCTION

The goal of our model is to obtain a structure with a high detection rate. Therefore, the selection of the fitness function needs to consider the detection rate of the deep belief network:

$$P = \frac{N_{correct}}{N_{all}} \times 100\% \tag{6}$$

where  $P$  represents the detection rate,  $N_{correct}$  represents the number of correctly classified data and  $N_{all}$  represents the total number of data. In this case, a network structure with a high detection rate can be retained more easily. At the same time, we also need to consider reducing the number of hidden layers as much as possible on the premise of ensuring the detection rate, because the more layers are, the longer the training time will be taken. In addition to this, under the premise of meeting the accuracy requirements, the structure should be as compact as possible, and the network structure should not be too complicated. Also, experimental results in [23] show that the number of neurons in the first and second hidden layers should be kept nearly equal so that the network can be trained easily.

We can show the complexity between multiple hidden layers by calculating the standard deviation:  $\sigma$  as formula (7).

$$\sigma = \sqrt{\frac{1}{N} \sum_{i=1}^N (x_i - \mu)^2} \tag{7}$$

where  $x_i$  represents the number of neurons in the  $i^{th}$  hidden layer,  $\mu$  represents the average of the number of neurons in each layer, and  $N$  is the total number of samples.

To visually display the complexity, we normalize the standard deviation as:

$$\sigma^* = \frac{\sigma - \sigma_{min}}{\sigma_{max} - \sigma_{min}} \tag{8}$$



So we use the following equation to calculate the fitness function:

$$f = w_1 \times p + w_2 \times l + w_3 \times (1 - \sigma^*) \quad (9)$$

where  $p$  represents the detection rate of the current deep belief network, within the range of  $[0, 1]$ ,  $l$  is the reciprocal of the number of hidden layers in the network, the smaller the number of hidden layers, the larger the reciprocal value is, and the range is  $[0, 1]$ .  $\sigma^*$  is the standard deviation after normalization, within the range of  $[0, 1]$ . And  $f$  is the fitness value, and should be within the range  $[0, 1]$ .  $w_1, w_2$  and  $w_3$  are weights. After continuous testing, we finally set  $w_1 = 0.995$ ,  $w_2 = 0.005$  and  $w_3 = 0.005$ .

$$f = 0.99 \times p + 0.005 \times l + 0.005 \times (1 - \sigma^*) \quad (10)$$

By using Eq. 10, individuals with higher detection rates, fewer hidden layers and smaller complexity can be more easily retained, so we can obtain structures with high detection rates, few hidden layers and low complexity easily.

The improved GA flow chart is shown as Fig. 5:

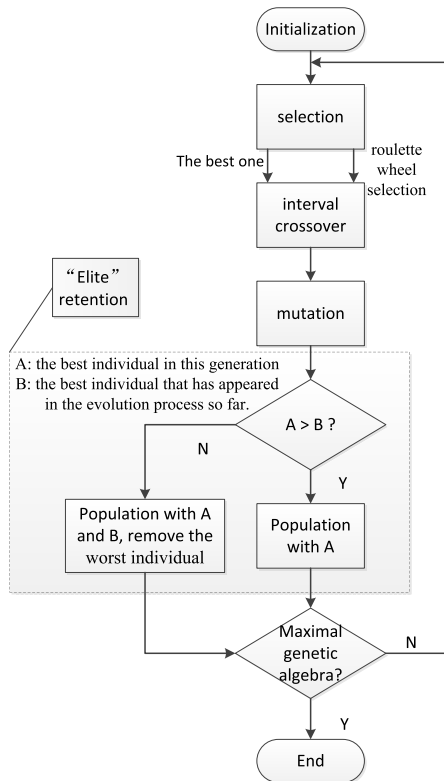


FIGURE 5. The improved GA flow chart.

### C. RESTRICTED BOLTZMANN MACHINES

Deep Belief Networks (DBN) is a kind of deep learning structure. As shown in Fig. 6, it is composed of multiple Restricted Boltzmann Machines (RBMs), mainly executing unsupervised learning of pre-processed data, processing and abstracting the high-dimensional data [33].

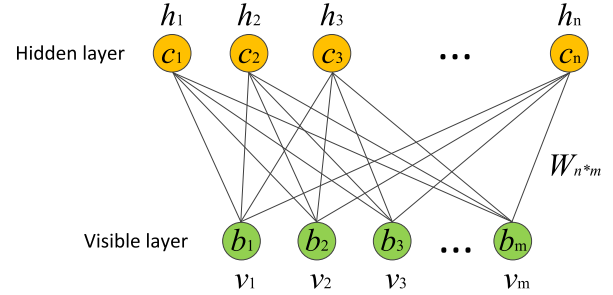


FIGURE 6. RBM structure in deep belief network.

#### 1) PARAMETERS LEARNING

In RBM,  $v$  represents all visible units and  $h$  represents all hidden units. To determine the model, we only need to obtain three parameters of the model:  $\theta = \{W, A, B\}$ . There are weight matrix  $W$ , visible layer element bias  $A$  and hidden layer element bias  $B$ , respectively.

Suppose an RBM has  $n$  visible cells and  $m$  hidden cells,  $v_i$  represents the  $i^{th}$  visible unit,  $h_j$  represents the  $j^{th}$  hidden unit, and its parameter form is:

$$W = \{w_{i,j} \in R^{n \times m}\} \quad (11)$$

where  $w_{i,j}$  represents the weight between the  $i^{th}$  visible cell and the  $j^{th}$  hidden cell;

$$A = \{a_i \in R^m\} \quad (12)$$

where  $a_i$  represents the bias threshold of the  $i^{th}$  visible cell.

$$B = \{b_j \in R^n\} \quad (13)$$

where  $b_j$  represents the bias threshold of the  $j^{th}$  visible cell.

For a set of  $(v, h)$  under a given state, assuming that both visible and hidden layer obey Bernoulli distribution, the energy formula of RBM is:

$$E(v, h|\theta) = - \sum_{i=1}^n a_i v_i - \sum_{j=1}^m b_j h_j - \sum_{i=1}^n \sum_{j=1}^m v_i w_{ij} h_j \quad (14)$$

where,  $\theta = \{W_{ij}, a_i, b_j\}$  is a parameter of the RBM model, and the energy function indicates that there is an energy value between the value of each visible node and that of each hidden layer node.

After the exponential and regularization of the energy function, the joint probability distribution formula can be obtained that the node set of visible layer and the node set of hidden layer are in a certain state respectively  $(v, h)$  :

$$P(v, h|\theta) = \frac{e^{-E(v, h|\theta)}}{Z(\theta)} \quad (15)$$

$$Z(\theta) = \sum_{v, h} e^{-E(v, h|\theta)} \quad (16)$$

where,  $Z(\theta)$  is a normalized factor or partition function, representing the sum of the energy exponents of all possible states of the node set of the visible layer and the hidden layer.

The derivation of likelihood function is often used to get the parameters. Given the joint probability distribution  $P(v, h|\theta)$ , the marginal distribution  $P(v|\theta)$  of the node set of the visible layer can be obtained by summation over all states of the hidden layer node set:

$$P(v|\theta) = \frac{1}{Z(\theta)} \sum_h e^{-E(v,h|\theta)} \quad (17)$$

Marginal distribution represents the probability that the set of nodes in the visible layer is in a certain state distribution.

Due to the special layer-layer connection and inter-layer connectionless structure of RBM model, it has the following important properties:

① Given the state of the visible cell, the activation states of each hidden layer cell are conditionally independent. At this time, the activation probability of the  $j^{th}$  hidden element is:

$$P(h_j = 1|v) = \sigma(b_j + \sum_i v_i W_{ij}) \quad (18)$$

② Correspondingly, when the state of the hidden element is given, the activation probability of the visible element is also conditional independent:

$$P(v_i = 1|h) = \sigma(a_i + \sum_j W_{ij}h_j) \quad (19)$$

where,  $\sigma(x)$  is the sigmoid function.

## 2) SOLVING THE PARAMETERS

To determine RBM model, it is necessary to solve the three parameters of the model:  $\theta = \{W_{ij}, a_i, b_j\}$ .

The parameter solution uses the logarithmic likelihood function to take the derivative of the parameter.

As we know from  $P(v|\theta) = \frac{1}{Z(\theta)} \sum_h e^{-E(v,h|\theta)}$ , energy  $E$  is inversely proportional to probability  $P$ , and  $E$  is minimized by maximizing  $P$ .

The common method to maximize the likelihood function is the gradient rise method, which refers to the modification of parameters according to the following formula:

$$\theta = \theta + \mu \frac{\partial \ln P(v)}{\partial \theta} \quad (20)$$

This iteration maximizes the likelihood function  $P$  and minimizes the energy  $E$ .

The format of logarithmic likelihood function:  $\ln P(v^s)$ ,  $v^s$  represents the input data of the model, and a single sample is first analyzed here, that is,  $v^s$  is the  $s^{th}$  sample in the data set.

Then take the derivatives of the parameters in  $\{W_{ij}, a_i, b_j\}$  respectively:

$$\frac{\partial \ln P(v^s)}{\partial w_{i,j}} = P(h_i = 1|v^s)v_j^s - \sum_v P(v)P(h_i = 1|v)v_j \quad (21)$$

$$\frac{\partial \ln P(v^s)}{\partial a_i} = v_i^s - \sum_v P(v)v_i \quad (22)$$

$$\frac{\partial \ln P(v^s)}{\partial b_i} = P(h_i = 1|v^s) - \sum_v P(v)P(h_i = 1|v) \quad (23)$$

Since the second term of the above three equations contains  $P(v)$ ,  $P(v)$  still contains parameters, so we solve it by Gibbs sampling.

## D. DBN FOR INTRUSION DETECTION

DBN module is mainly divided into two steps in the training phase:

(1) Each RBM is trained separately.

It has unsupervised and independent features in the training process, and it ensures that feature information is retained as much as possible when mapping feature vectors into different feature spaces.

In training a single RBM, weight updates are performed with gradient descent via the following equation:

$$w_{ij}(t + 1) = w_{ij}(t) + \eta \frac{\partial \log(p(v))}{\partial w_{ij}} \quad (24)$$

where  $p(v)$  is the probability of a visible vector, which is given by:

$$p(v) = \frac{1}{Z} \sum_h e^{-E(v,h)} \quad (25)$$

$Z$  is the partition function (used for normalizing) and  $E(v, h)$  is the energy function assigned to the state of the network.

The observed joint distribution of the input value  $x$  and hidden layer  $H_k$  is modeled as follows:

$$P(x, H_1, \dots, H_N) = \left( \prod_{k=0}^{N-2} P(H_k|H_{k+1}) \right) \cdot P(H_{N-1}, H_N) \quad (26)$$

where  $x = H_0$ ,  $P(H_{k-1}|H_k)$  is a conditional distribution of visible units in the  $k$  layer with the condition of hidden units of RBM.  $P(H_{N-1}, H_N)$  is the visible-hidden joint distribution at the top level of the RBM. This process is illustrated in Fig. 7.

As shown in Fig. 7, the first layer is trained as an RBM, assigning the input  $x$  to  $V_1$  as the visible layer.

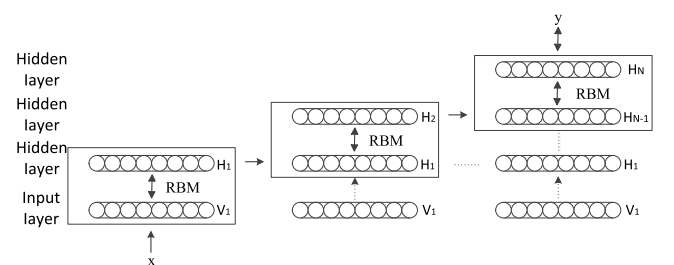


FIGURE 7. RBM training process.

The input data obtained from the first layer is characterized as the second layer's data. Two ways exist,  $P(H_1 = 1|H_0)$  or  $P(H_1|H_0)$  can be chosen to active averagely.

Once an RBM is trained, another RBM is "stacked" to atop it, taking its input from the final trained layer. The new visible layer is initialized to a training vector, and values for

the units in the already-trained layers are assigned using the current weights and biases. The new RBM is then trained with the procedure above. This whole process is repeated until the desired stopping criterion is met [34].

Finally, this process is repeated until to the last layer. This is a Deep Learning method.

(2) The last layer of the DBN is set as the BP neural network.

The feature vector of upper RBM is used as an input vector to train an entity classifier under supervision. Since the RBM of each layer can only ensure that its own weight corresponding to the feature vector is optimal after the first step training, and our ultimate goal is to make the overall weight corresponding to the feature vector as optimal. So according to the characteristics of the BP neural network, it can propagate error information from the top layer to the bottom layer of RBM, and achieve fine-tuning the whole DBN network. The global optimization could be achieved.

---

#### Algorithm 1 Intrusion Detection Model

---

– $f_1$  : the individual with greatest fitness value in this generation

– $fbest$  : the best individuals that emerged during evolution

– $L$  : the number of hidden layers

– $N$  : the number of nodes in every hidden layer

1: Initialization

2: Calculate the fitness value of initial population

3:  $f = 0.99 \times p + 0.005 \times l + 0.005 \times (1 - \sigma^*)$

4: for I from 1 to 50

5: selection

6: crossover

7: mutation

8: calculate the fitness value

9: find out the individual  $f_1$

10: compare with the  $f_1$  and the  $fbest$

11: if  $f_1 > fbest$

12:  $fbest \leftarrow f_1$

13: keep  $f_1$  in the next iteration

14: else

15: keep  $f_1$  in the next iteration

16: set  $fbest$  in the next iteration

17: delete the one with smallest fitness value

18: end if

19: if I = 50

20: broadcast  $fbest$

21: get the  $L$  and  $N$  from  $fbest$

22: end if

23: end for

24: for I from 1 to  $L$

25: training the  $I^{th}$  RBM

26: end for

27: Training the BP, fine-tune the RBM

28: Test DBN with test set

---

Thus, the number of hidden layers and the number of neurons in each layer in the deep belief network are determined by the algorithm model we constructed above.

#### E. ALGORITHM FLOW

The algorithm flow is summarized as follows:

*Step1:* Initialize the population and generate different number of hidden layers and the number of neurons in each layer randomly;

*Step2:* Calculate the fitness value according to Eq. 9, the roulette method is chosen, and the optimal individual in the present is kept; crossover and mutation are performed alternately;

*Step3:* “Elite” retains, retaining individuals with the greatest fitness value during evolution;

*Step4:* Determine whether the maximum number of iterations has been reached. If reached, the generated network structure is retained, otherwise iterate Step2-Step3 again;

*Step5:* Use the optimal network structure for the deep belief network and train the intrusion detection model.

*Step6:* Classify the testing set by the trained DBN module, and finally match the classification result with the category information of the testing set to check the accuracy of the classification.

The algorithm flow chart is shown as Fig. 8.

The pseudocode of the algorithm is expressed as follows:

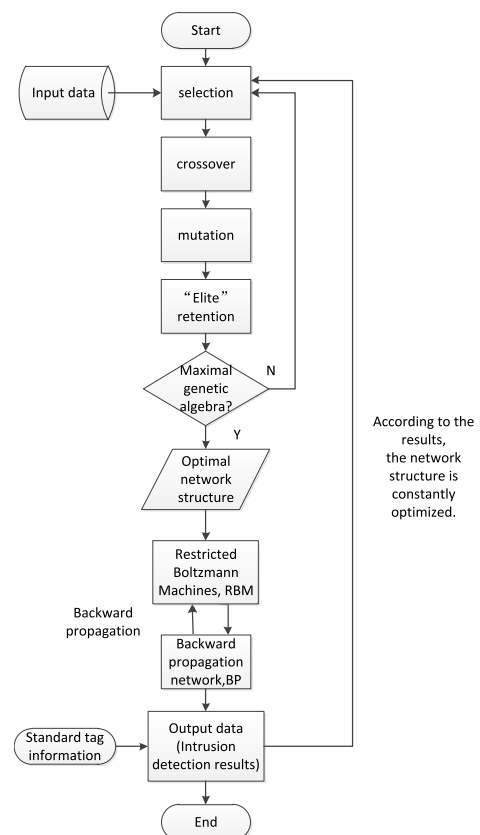


FIGURE 8. The proposed algorithm flow chart.

IV. EXPERIMENTAL SIMULATION

A. EXPERIMENTAL DATA

KDDCUP99 [35] and NSL-KDD are the most commonly used datasets in the intrusion detection research. We used NSL-KDD intrusion dataset which is available in csv format for model validation and evaluations. The dataset composes of the attacks shown in Table 1, and identified as a key attack in IoT computing. Sherasiya and Upadhyay [36] pointed out that IoT objects are also exposed to such types of attacks, and the data that IoT objects exchange are of the same value and importance, or occasionally more important than a non-IoT counterpart.

TABLE 1. The attacks in NSL-KDD dataset.

Main class	Sub class (attacks) in train set	New sub class (attacks) in test set
DoS	Back, land, Neptune, Smurf, pod, teardrop	Apache2, Mailbomb, Processtable
Probe	Imap, multihop, phf, spy, warezclient, warezmaster, ftp write, guess passwd	Mscan, Saint
U2R	Buffer overflow, perl, loadmodule, rootkit	Httpunnel, Ps, Sqliattack, Xterm
R2L	Ipsweep, nmap, portsweep, satan	Sendmail, Named, Snmpgetattack, Snmp guess, Xlock, Xsnoop, Worm

According to the analysis of KDDCUP99 and its latter version NSL-KDD, malicious behaviors (attacks) in network-based intrusions can be classified into the following four main categories:

- Probe: when an attacker seeks to only gain information about the target network through network and host scanning activities.
- DoS (denial of service): when an attacker interrupts legitimate users' access to the given service or machine.
- U2R (User to Root): when an attacker attempts to escalate a limited user' privilege to a super user or root access (e.g. via malware infection or stolen credentials).
- R2L (Remote to Local): when an attacker gains remote access to a victim machine imitating existing local users.

Although the test set contains 17 new attack types which are not included in the training set, we can also evaluate the effectiveness of our algorithm in detecting unknown or uncommon attacks correctly.

The original dataset consists of 125,973 records of training and 22,544 records of test, each with 41 features such as duration, protocol, service, flag, source bytes, destination bytes, etc. The traffic distribution of NSL-KDD dataset is shown as Table 2.

In order to make the classification result more accurate and meet the standard conditions of the DBN's input data set, the data set needs to be normalized. Normalization techniques are necessary for data reduction since it is quiet complex to process huge amount of network traffic data with all features to detect intruders in real time and to provide prevention

TABLE 2. The traffic distribution of NSL-KDD dataset.

Traffic	Training	test
Normal	67343	9711
DoS	45927	7458
Probe	11656	2754
R2L	995	2421
U2R	52	200
Total	125973	22544

methods. The method used in this paper is the Min-Max normalization method, also known as deviation standardization, which is a linear change to the original data, mapping the resulting value to [0, 1], the conversion function is as follows:

$$X^* = \frac{X - Min}{Max - Min} \tag{27}$$

where *Max* is the maximum value of the sample data, and *Min* is the minimum value of the sample data.

Below is a summary of the metrics we adopted to evaluate the detection method:

	Predicted: normal	Predicted: attack
Actual: normal	TN	FP
Actual: attack	FN	TP

$$ACC = \frac{TP + TN}{TP + TN + FP + FN}$$

$$DR = \frac{TP}{TP + FN}$$

$$FAR = \frac{FP}{TN + FP}$$

$$Precision = \frac{TP}{TP + FP}$$

$$Recall = \frac{TP}{(TP + FN)}$$

where, accuracy (*ACC*) is the percentage of true detection over total data instances; detection rate (*DR*) represents ratio of intrusion instances; false alarm rate (*FAR*) represents the ratio of misclassified normal instances; *Precision* represents how many of the returned attacks are correct; *Recall* represents how many of the attacks does the model return. *FP*: false positive, *TP*: true positive, *TN*: true negative, *FN*: false negative.

B. SIMULATION ENVIRONMENT

The experiment was conducted using MATLAB R2016a running on a personal computer (PC). DBN model optimized with GA is trained with the training sets and then evaluated using the test set.

C. SIMULATION RESULTS

First, we need to set the number of generations of the genetic algorithm.

It can be seen from Fig. 9 that as the number of iterations increases, the fitness value increases, and when the number of iterations exceeds 50, the curve tends to be stable, and



the fitness value no longer increases with the number of iterations. Therefore, we set the genetic algebra of the genetic algorithm to 50 generations.

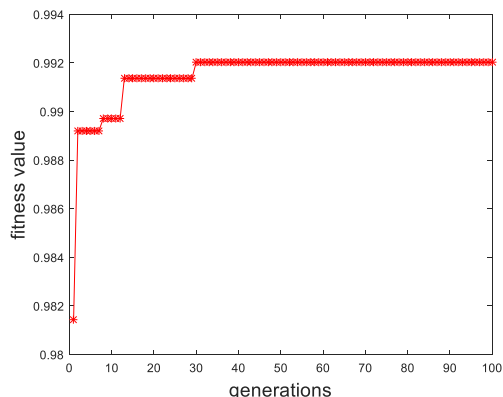


FIGURE 9. Genetic algorithm iterative results.

Secondly, set the training times for the BP network.

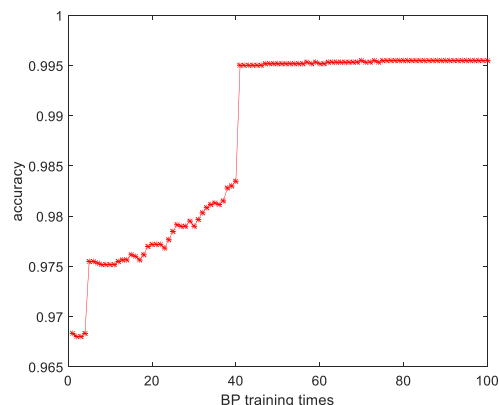


FIGURE 10. BP network training results.

From Fig. 10, we can see that when the number of training exceed 80 times, the curve is basically stable, and with the increasing of the number of training, the classification accuracy rate no longer increases significantly and wasting the training time in vain, so we set the BP network training epochs as 80.

Then, set the training times for the RBM.

From Fig. 11 we can see that the training times of RBM have little effect on the classification accuracy rate, there is no obvious increase or decrease trend, and we set the RBM training epochs as 10.

Finally, we use DoS, R2L, Probe, U2R four classes of attacks as intrusion attack training sets respectively. Through an improved genetic algorithm, the optimal network structure for each type of attack is obtained, and the iterative process for each type of attacks is shown in Fig. 12:

We decode the optimal chromosome generated by the iteration, and then get the optimal network structure as shown in Table 3:

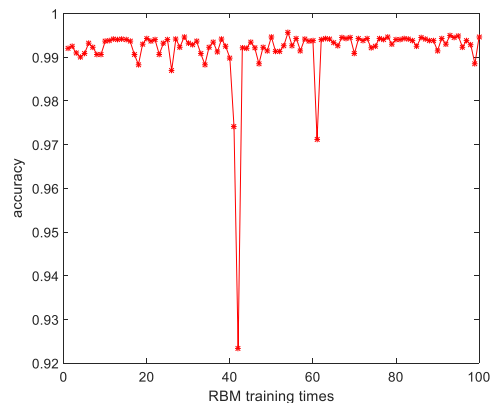


FIGURE 11. RBM training results.

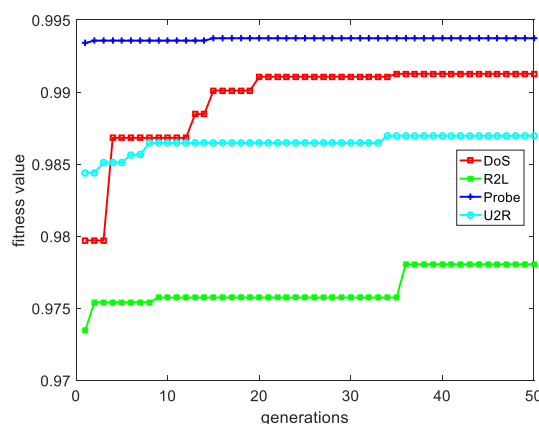


FIGURE 12. Iterative results with different attacks.

TABLE 3. Optimal network structure for different types of attacks.

Number	Attack	Network Structure
A	DoS	41-18-12-2
B	R2L	41-31-2
C	Probe	41-26-2
D	U2R	41-38-2

The network structure of the deep neural network includes the input layer, hidden layer, and output layer. Because each record in the data set has 41 features, the size of input layer is 41. The output has two characteristics: normal and abnormal, so the size of output layer is 2. The middle is hidden layer. For data sets with different attack types, the different optimal network structure is generated by multiple iterations of the genetic algorithm. For example, as shown in Table 1, if DoS is used as a training set, the optimal network structure obtained is A, and the structure is 41-18-12-2.

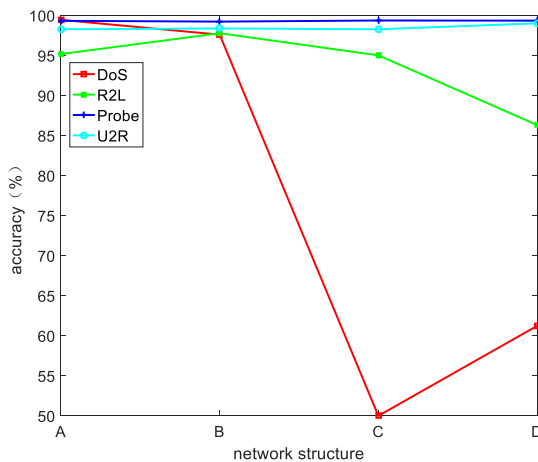
Intrusion detection is performed on four classes of attacks using the A-D network structures respectively, and their detection rates are calculated as shown in Table 4:

It can be seen from Fig. 13, for a certain type of network structure generated by the certain type of attack, the detection rate of this type of network is higher than other network struc-

**TABLE 4. Detection rate for different class of attack.**

Structure	DoS	R2L	Probe	U2R
A	<b>99.45%</b>	95.18%	90.33%	98.27%
B	97.60%	<b>97.78%</b>	99.23%	98.38%
C	50.00%	95.02%	<b>99.37%</b>	98.27%
D	61.23%	86.32%	99.35%	<b>98.68%</b>

tures. For example, as shown in Fig. 12, the DoS detection rate of network structure A generated by DoS as a training set is significantly higher than that of other structures. The R2L detection rate of network structure B generated by R2L as a training set also significantly higher than that of other structures. The classification accuracy of Probe and U2R is relatively high under all the four network structures, so the comparison results are not very significant in Fig. 13. It can be seen that the network structure adaptively generated by the genetic algorithm has a higher detection rate than other network structures.



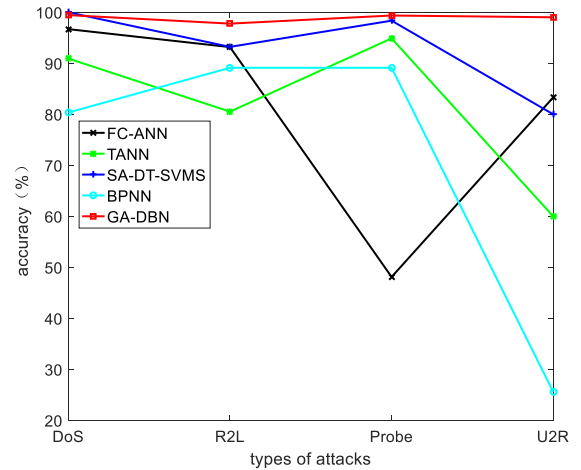
**FIGURE 13. Detection rate for different class of attack.**

At the same time, we compared our method with the methods TANN, FC-ANN, SA-DT-SVMS, and BPNN proposed by others researchers. These are representative methods in the field of intrusion detection in recent years, including methods based on SVM (support vector machine), artificial neural network and deep learning, and the same KDDCUP99 data set are used for testing. The results compared with the above methods are summarized in Table 5.

**TABLE 5. Classification accuracy of each method.**

Method	DoS	R2L	Probe	U2R
FC-ANN	96.70%	93.18%	48.12%	83.33%
TANN	90.94%	80.53%	94.89%	60.00%
SA-DT-SVMS	100.00%	93.22%	98.36%	80%
BPNN	80.35%	89.12%	89.12%	25.58%
<b>GA-DBN</b>	<b>99.45%</b>	<b>97.78%</b>	<b>99.37%</b>	<b>98.68%</b>

It can be seen from Fig. 14 that the proposed GA-DBN method has reached a very high level of detection rate for the detection of four types of attacks. The classification accuracy



**FIGURE 14. Classification accuracy of each method.**

of DoS is higher than 99%, and the classification accuracy of R2L, Probe and U2R are also significantly higher than other methods. Compared with the method based on SVM, our method has higher detection rate for low-frequency attacks, such as U2R.

The performances of detecting different attacks are summarized in Table 6.

**TABLE 6. The traffic distribution of NSL-KDD dataset.**

	ACC (%)	DR (%)	FAR (%)	Precision (%)	Recall (%)
DoS	99.45	99.7	0.8	99.20	99.7
Probe	99.37	99.4	0.7	99.30	99.4
R2L	97.78	93.4	7.3	92.75	93.4
U2R	98.68	98.2	1.8	98.20	98.2

### 1) CONCLUSION

Through GA, the optimal individuals can be generated by iterations. DBN can effectively process high complex and high dimensional data, and the classification results are very good. In this paper, the improved genetic algorithm are combined with the deep belief networks, GA performs multiple iterations to produce an optimal network structure, DBN then uses the optimal network structure as an intrusion detection model to classify the attacks. In this way, facing different types of attacks, the problem of how to select an appropriate neural network structure when using deep learning methods for intrusion detection is solved, thus it improves the classification accuracy and generalization of the model, and reduces the complexity of network structure.

This method has many advantages: on the one hand, the specific network structure generated for specific attack types is higher in classification accuracy than other network structures, which can reach more than 99% of detection rate. On the other hand, for small training sets, such as U2R, the classification accuracy of our algorithm is also significantly higher than other methods. In addition, as the

model complexity is reduced, the training time of DBN can be reduced without affecting the accuracy of model classification, and the proposed self-adaptive model can change the network structure for different attack types, so that our intrusion detection model can maintain a high detection rate continuously.

In addition, the algorithm combining GA and DBN model not only can be used in intrusion detection in IoT, also can be applied to other situations, such as classification and recognition. For different training sets, an optimal network structure is adaptively generated for classification. Moreover, for small training sets, high classification accuracy can also be achieved, which helps to find low-frequency attacks in intrusion detection systems. In the future, we will consider to optimize the other parameters of the deep network, reduce the training time and improving the detection accuracy.

## REFERENCES

- [1] Q. Jing, A. V. Vasilakos, J. Wan, J. Lu, and D. Qiu, "Security of the Internet of Things: Perspectives and challenges," *Wireless Netw.*, vol. 20, no. 8, pp. 2481–2501, Nov. 2014.
- [2] A. Abduvaliyev, A. S. K. Pathan, J. Zhou, R. Roman, and W. C. Wong, "On the vital areas of intrusion detection systems in wireless sensor networks," *IEEE Commun. Surv. Tuts.*, vol. 15, no. 3, pp. 1223–1237, 3rd Quart., 2013.
- [3] S. Sicari, A. Rizzardi, L. A. Grieco, and A. Coen-Porisini, "Security, privacy and trust in Internet of Things: The road ahead," *Comput. Netw.*, vol. 76, pp. 146–164, Jan. 2015.
- [4] M. U. Farooq, M. Waseem, A. Khairi, and S. Mazhar, "A critical analysis on the security concerns of Internet of Things (IoT)," *Int. J. Comput. Appl.*, vol. 111, no. 7, pp. 1–6, 2015.
- [5] T. Borgohain, U. Kumar, and S. Sanyal. (2015). "Survey of operating systems for the IoT environment." [Online]. Available: <https://arxiv.org/abs/1504.02517>
- [6] H. HaddadPajouh, A. Dehghantaha, R. Khayami, and K.-K. R. Choo, "A deep Recurrent Neural Network based approach for Internet of Things malware threat hunting," *Future Gener. Comput. Syst.*, vol. 85, pp. 88–96, Aug. 2018.
- [7] M. Conti, A. Dehghantaha, K. Franke, and S. Watson, "Internet of Things Security and Forensics: Challenges and Opportunities," *Future Generation Comput. Syst.*, vol. 78, pp. 544–546, Jan. 2018.
- [8] H. H. Pajouh, R. Javidan, R. Khayami, D. Ali, and K. K. R. Choo, "A two-layer dimension reduction and two-tier classification model for anomaly-based intrusion detection in IoT backbone networks," *IEEE Trans. Emerg. Topics Comput. Piscataway, NJ, USA: Institute of Electrical and Electronics Engineers*. doi: 10.1109/TETC.2016.2633228.
- [9] W. Lee and S. J. Stolfo, "Data mining approaches for intrusion detection," in *Proc. 7th USENIX Secur. Symp.*, San Antonio, TX, USA, Jan. 1998, pp. 120–132.
- [10] L. Khan, M. Awad, and B. M. Thuraisingham, "A new intrusion detection system using support vector machines and hierarchical clustering," *VLDB J.*, vol. 16, no. 4, pp. 507–521, 2007.
- [11] E. Hodo et al., "Threat analysis of IoT networks using artificial neural network intrusion detection system," in *Proc. Int. Symp. Netw., Comput. Commun. (ISNCC)*, May 2016, pp. 1–6.
- [12] A. A. Diro and N. Chilamkurti, "Distributed attack detection scheme using deep learning approach for Internet of Things," *Future Gener. Comput. Syst.*, vol. 282, pp. 761–768, May 2017.
- [13] R. Beghdad, "Critical study of neural networks in detecting intrusions," *Comput. Secur.*, vol. 27, pp. 168–175, Oct. 2008.
- [14] S. Mukkamala, G. Janoski, and A. Sung, "Intrusion detection using neural networks and support vector machines," in *Proc. Int. Joint Conf. Neural Netw. (IJCNN)*, Honolulu, HI, USA, 2002, pp. 1702–1707.
- [15] E. Hodo, X. Bellekens, A. Hamilton, C. Tachtatzis, and R. C. Atkinson. (2017). "Shallow and deep networks intrusion detection system: A taxonomy and survey." [Online]. Available: <https://arxiv.org/abs/1701.02145>
- [16] J. Ryan, M. J. Lin, and R. Miikkulainen, "Intrusion detection with neural networks," in *Proc. Adv. Neural Inf. Process. Syst. NIPS*, Denver, CO, USA, vol. 10, 1997, pp. 943–949.
- [17] E. Yu and P. Parekh. (2016). "A Bayesian ensemble for unsupervised anomaly detection." [Online]. Available: <https://arxiv.org/abs/1610.07677>
- [18] A. Saraswati, M. Hagenbuchner, and Z. Q. Zhou, "High resolution SOM approach to improving anomaly detection in intrusion detection systems," in *Proc. Australas. Joint Conf. Artif. Intell.*, vol. 9992. Cham, Switzerland: Springer, Nov. 2016, pp. 191–199.
- [19] G. Wang, J. Hao, J. Ma, and L. Huang, "A new approach to intrusion detection using artificial neural networks and fuzzy clustering," *Expert Syst. Appl.*, vol. 37, pp. 6225–6232, Sep. 2010.
- [20] T. Ma, F. Wang, J. Cheng, Y. Yu, and X. Chen, "A hybrid spectral clustering and deep neural network ensemble algorithm for intrusion detection in sensor networks," *Sensors*, vol. 16, no. 10, p. 1701, 2016.
- [21] Z. Chiba, N. Abghour, K. Moussaid, A. El Omri, and M. Rida, "A cooperative and hybrid network intrusion detection framework in cloud computing based on snort and optimized back propagation neural network," *Procedia Comput. Sci.*, vol. 83, pp. 1200–1206, May 2016.
- [22] S. Karsoliya, "Approximating number of hidden layer neurons in multiple hidden layer BPNN architecture," *Int. J. Eng. Trends Technol.*, vol. 3, no. 6, pp. 714–717, 2012.
- [23] C. Yin, Y. Zhu, J. Fei, and X. He, "A deep learning approach for intrusion detection using recurrent neural networks," *IEEE Access*, vol. 5, pp. 21954–21961, 2017.
- [24] B. Abolhasanzadeh, "Nonlinear dimensionality reduction for intrusion detection using auto-encoder bottleneck features," in *Proc. 7th Conf. Inf. Knowl. Technol. (IKT)*, Urmia, Iran, 2015, pp. 1–5.
- [25] N. Gao, L. Gao, Q. Gao, and H. Wang, "An intrusion detection model based on deep belief networks," in *Proc. 2nd Int. Conf. Adv. Cloud Big Data*, Huangshan, China, 2014, pp. 247–252.
- [26] M. Z. Alom, V. Bontupalli, and T. M. Taha, "Intrusion detection using deep belief networks," in *Proc. Nat. Aerosp. Electron. Conf. (NAECON)*, Dayton, OH, USA, 2015, pp. 339–344.
- [27] Q.-S. Tan, W. Huang, and Q. Li, "An intrusion detection method based on DBN in ad hoc networks," in *Proc. Int. Conf. Wireless Commun. Sensor Netw.*, Wuhan, China, 2016, pp. 477–485.
- [28] Y. Liu, J. A. Starzyk, and Z. Zhu, "Optimizing number of hidden neurons in neural networks," in *Proc. IASTED Int. Conf. Artif. Intell. Appl. (AIA)*, Innsbruck, Austria, Feb. 2007, pp. 1–6.
- [29] I. I. Rivals and L. Personnaz, "A statistical procedure for determining the optimal number of hidden neurons of a neural model," in *Proc. 2nd Int. Symp. Neural Comput. (NC)*, Berlin, Germany, May 2000, pp. 23–26.
- [30] K. Z. Mao and G.-B. Huang, "Neuron selection for RBF neural network classifier based on data structure preserving criterion," *IEEE Trans. Neural Netw.*, vol. 16, no. 6, pp. 1531–1540, Nov. 2005.
- [31] C. A. Doukim, J. A. Dargham, and A. Chekima, "Finding the number of hidden neurons for an MLP neural network using coarse to fine search technique," in *Proc. 10th Int. Conf. Inf. Sci., Signal Process. Appl. (ISSPA)*, May 2010, pp. 606–609.
- [32] K. G. Sheela and S. N. Deepa, "Review on methods to fix number of hidden neurons in neural networks," *Math. Problems Eng.*, vol. 2013, May 2013, Art. no. 425740.
- [33] G. E. Hinton, S. Osindero, and Y.-W. Teh, "A fast learning algorithm for deep belief nets," *Neural Comput.*, vol. 18, no. 7, pp. 1527–1554, 2006.
- [34] Y. Bengio, "Learning deep architectures for AI," *Found. Trends Mach. Learn.*, vol. 2, no. 1, pp. 1–127, 2009.
- [35] M. Tavallaei, E. Bagheri, W. Lu, and A. Ghorbani, "A detailed analysis of the KDD CUP 99 data set," *Proc. 2nd IEEE Symp. Comput. Intell. Secur. Defense Appl. (CISDA)*, Ottawa, ON, Canada, Jul. 2009, pp. 1–6.
- [36] A. Alghuried, "A model for anomalies detection in Internet of Things (IoT) using inverse weight clustering and decision tree," M.S. thesis, School Comput., Dublin Inst. Technol., Dublin, Republic of Ireland, 2017.



**YING ZHANG** received the B.S. degree from the North China University of Technology, in 1990, the M.S. degree from the Hefei University of Technology, in 1996, and the Ph.D. degree from Shanghai Jiao Tong University, in 1999.

He held Postdoctoral position with Donghua University, in 2006. He was a Visiting Professor with the Georgia Institute of Technology, from 2009 to 2010, and with the University of Central Florida, from 2016 to 2017. He is currently a Professor with the College of Information Engineering, Shanghai Maritime University, China. His research interests include network security, the Internet of Things, wireless sensor networks, and mobile ad hoc networks.



**PEISONG LI** received the B.S. degree in optoelectronics information science and engineering from the Guilin University of Electronic Technology, China, in 2017. He is currently pursuing the M.S. degree in communication and information system with Shanghai Maritime University, China. His research interests include intrusion detection, network security, and the Internet of Things.



**XINHENG WANG** received the B.S. and M.S. degrees from the Department of Electrical Engineering, Xi'an Jiaotong University, China, in 1991 and 1994, respectively, and the Ph.D. degree in electrical engineering and electronics from Brunel University, U.K., in 2001. He is currently a Professor with School of Computing and Engineering, University of West London, U.K. His research interests include the Internet of Things (IoT), smart service networks (networking, cloud computing, and big data analytics), converged indoor positioning, and disaster management.

• • •