

Investigating Maternal Mortality in a Public Teaching Hospital, Abakaliki, Ebonyi State, Nigeria

Ezegwui HU, Onoh RC¹, Ikeako LC², Onyebuchi A¹, Umeorah J³, Ezeonu P¹, Ibekwe P³

Department of Obstetrics and Gynaecology, University of Nigeria Teaching Hospital, Enugu, ¹Department of Obstetrics and Gynaecology, Federal Medical Centre, Abakaliki, ²Department of Obstetrics and Gynaecology, Anambra State University Teaching Hospital, Amaku, Awka, ³Ebonyi State University Teaching Hospital, Abakaliki, Nigeria

Address for correspondence:

Dr. Hyginus Ezegwui,
Department of Obstetrics and
Gynecology, College of Medicine,
University of Nigeria, Nsukka,
Enugu-Nigeria.
E-mail: hyginus.ezegwui@unn.edu.ng

Abstract

Background: Maternal mortality in sub-Saharan Africa has remained high and this is a reflection of the poor quality of maternal services. **Aim:** To determine the causes, trends, and level of maternal mortality rate in Abakaliki, Ebonyi. **Materials and Methods:** This was a review of the records of all maternal deaths related to pregnancy over a ten-year period, that is, January 1999 to December 2008. Relevant information on number of deaths, booking status, age, parity, educational level of women, mode of delivery, and causes of death were extracted and analyzed. **Results:** During the study period, there were 12,587 deliveries and 171 maternal deaths. The maternal mortality ratio (MMR) was 1,359 per 100,000 live births. The trend over the period was lowest in 2008 and highest in 1999 with an MMR of 757 per 100,000 live births and 4,000 per 100,000 live births, respectively. There was a progressive decline in the MMR over the period of study except in the years 2003 and 2006, when the ratio spiked a little, giving an MMR of 1,510 per 100,000 live births and 1,290 per 100,000 live births, respectively. The progressive decline in maternal mortality corresponded with the time that free maternal services were introduced. Hemorrhage was the most important cause of maternal death, accounting for 23.0% (38/165), whereas diabetic ketoacidosis, congestive cardiac failure, and asthma in pregnancy were the least important causes of maternal deaths, each accounting for 0.6% (1/165). Majority of the maternal deaths occurred in unbooked patients (82.4% (136/165)), whereas 17.6% (29/165) of the deaths occurred in booked cases. Forty-seven (28.5% (47/165)) patients died following a cesarean section, 8.5% (14/165) died as a result of abortion complications, and 10.9% (18/165) died undelivered. Seventy-seven (46.7% (77/165)) of the maternal death patients had no formal education. Low socioeconomic status, poor educational level, and grand multiparity were some of the risk factors for maternal mortality. **Conclusion:** There was a decline in MMR during the period of study. The free maternal health services and adequate staff recruitment, which may have contributed to the observed decline in maternal mortality, should be sustained in developing countries.

Keywords: Maternal mortality, Removal of user fee, Causes, Nigeria

Introduction

Maternal mortality in developing countries has been described as a 'silent tragedy'.^[1] The tragedy is underscored by the fact that death here follows a physiological process necessary for the perpetuation of human race, rather than pathology.

Of all the health statistics monitored by the World Health Organization (WHO), maternal mortality is the one with the largest discrepancy between developed and developing countries. In the revised WHO estimates,^[2] about 1,600 maternal deaths occur each day worldwide and the total is around 585,000 a year, of which 99% are in developing countries.

In developed countries, maternal mortality ratios (MMRs) have stabilized at 5-10 per 100,000 live births although there may be an under-report of 26 to 56%.^[3] Presently, the lifetime risk of maternal death (the probability of maternal death during a woman's reproductive life) is highest in Africa (at 1 in 26), whereas it is 1 in 47,600 in Ireland.^[1,4] These unacceptable

Access this article online

Quick Response Code:



Website: www.amhsr.org

DOI:
10.4103/2141-9248.109511

statistics have remained unchanged for over two decades in spite of the fact that almost all causes of maternal mortality are well known and preventable.^[1,5]

Access to quality care during pregnancy and especially at delivery seems to be the crucial factor in explaining the disparity in maternal mortality between the developing countries and the industrialized world.^[6] Only about one-third of births are assisted by trained attendants in African and South Asia, and 64% in Latin America as opposed to 93% in East Asia and virtually 100% in North America.^[4]

The Nigeria Demographic and Health Survey 2008, for instance, found that only about 39% of the births were assisted by a skilled health worker, 19% by a relative or other person, and an equal proportion of births were attended by no one.^[7] The situation is made worse by the concentration of health facilities in the urban areas and neglect of the rural areas, where over 80% of the population resides with few facilities that can adequately offer emergency obstetric care.^[6]

Presently, Nigeria's MMR has been indicated as one of the highest in the world.^[8] A recent official document from the Federal Ministry of Health indicated a figure of 948 maternal deaths per 100,000 live births (range: 339-1,716 per 100,000).^[9] The MMR of over 1,500 per 100,000 live births is very high even by African standards, as seen by comparing Namibia (300) and Ghana (540).^[4]

The MMRs in most developing countries have consistently shown a rising trend for more than two decades after the safe motherhood initiative (SMI)^[10] was launched in Kenya in 1987. A comparative review of maternal deaths (before and after SMI) in a teaching hospital in Enugu, Nigeria showed that MMR was significantly higher in the period after the launch of the SMI.^[11]

There is a need for periodic reviews of maternal deaths in obstetric units to improve future obstetric services.

The aim of this study is to determine the MMR, compare it with that of the previous study in the hospital and identify the causes and trends at the Ebonyi State University Teaching Hospital (EBSUTH), Abakaliki, Nigeria.

Materials and Methods

This was a retrospective analysis of the maternal deaths at EBSUTH, Southeast Nigeria over a ten-year period (between January 1, 1999 and December 31, 2008).

Abakaliki is the capital of the state of Ebonyi with an estimated population of 4.3 million according to the 2006 national census. It occupies a land mass of 5,935 km². About 75% of the population dwells in the rural areas with farming as the major occupation.

EBSUTH is one of the two tertiary health facilities in Abakaliki, the state capital, and receives referrals from all parts of the state. Free maternal health services were introduced in the hospital in 2001.

After obtaining permission from the ethics and research committee of the hospital, the operating room, labor ward, antenatal ward, postnatal ward, accident and emergency department, as well as gynecological ward records were examined, and the names and hospital numbers of all maternal deaths related to pregnancy and childbirth were extracted. The case notes of these patients were retrieved from the records department of the hospital. The records were reviewed by trained staff using pre-established and piloted data extraction forms.

The information extracted included number of maternal deaths, booking status, age, parity, social class, educational level of the women, mode of delivery, and cause of death.

For all mortality cases, no autopsies were done.

The data were analyzed using Epi-Info 2007 software volume 3.4.1 (CDC, Atlanta, USA). Some of the data were represented with bar charts and graph.

Results

During the study period, there were 12,587 deliveries and 171 maternal deaths. This gives an MMR of 1,359 per 100,000 live births.

Table 1 shows the annual MMRs. It shows that the lowest maternal mortality was recorded in 2008. There were nine maternal deaths and the total delivery for that year was 1,189, giving an MMR of 757 per 100,000 deliveries. The peak MMR of 4,000 per 100,000 deliveries occurred in 1999. After 1999, there was a continuous regression in subsequent years with a slight rise in 2003 and a sharp drop in 2004, giving an MMR of 1,510 per 100,000 and 860 per 100,000 total deliveries, respectively.

The yearly MMR is graphically represented in Figure 1 for easy appreciation.

One hundred and sixty-five (96.5% (165/171)) case notes were available for detailed analysis.

The causes of maternal deaths are shown in Table 2. Direct obstetric causes were responsible for 84.2% of the deaths, whereas indirect causes resulted in 15.2% of the deaths.

Hemorrhage was the most important cause of maternal mortality, accounting for 23.0%. This was followed by puerperal sepsis (18.8%), ruptured uterus (13.9%), and obstructed labor (13.3%). Diabetic ketoacidosis, asthma, and congestive

cardiac failure were the least important (indirect) causes of maternal mortality, each accounting for 0.6% (1/165) of the deaths.

Majority of the maternal deaths occurred in unbooked patients (82.4% (136/165)), whereas 17.6% (29/165) of deaths occurred in booked cases.

Figure 2 shows the age distribution and maternal mortality. The highest maternal deaths of 27.3% (45/165) were noted in the age group of 25-29 years.

The lowest maternal deaths of 6.7% (11/165) were recorded in women who were 40 years and above.

Figure 3 shows the parity distribution of the patients. The highest maternal deaths were recorded among the grand multiparae (para \geq 5; 32.1% (53/165)), whereas para 3 had the lowest (7.9% (13/165)).

Table 3 shows that 28.5% (47/165) of the maternal deaths had their mode of delivery as cesarean section and this accounted for the highest maternal deaths. Assisted breech delivery accounted for the lowest maternal deaths (1.2% (2/165)). Approximately 10.9% (18/165) of the mothers died undelivered. The remaining 8.5% (14/165) were abortion-related deaths. Seventy-seven (46.7% (77/165)) of the maternal death patients had no formal education. Those with tertiary education accounted for the lowest number of maternal deaths with a value of 3.6% (6/165). The educational levels of 9.7% (16/105) of the patients were not stated.

Discussion

The MMR of 1,359 per 100,000 live births in this review is less than half of the value of 3,392 per 100,000 live births recorded in the same hospital in a previous study.^[12] It is also lower than the values from some tertiary institutions in Nigeria—Uyo 2,577 and Benin 2,282 per 100,000 live births^[13,14] respectively—and other developing countries—India 2,269.40 and Pakistan 1,578 per 100,000 live births, respectively.^[15,16]

The MMR at EBSUTH showed a decreasing trend from 4,000 per 100,000 live births in 1999 to 757 per 100,000 live births in 2008 and the latter figure is below the national average of 800 per 100,000 live births.^[9] The decline in MMR in the hospital could be attributed to the free maternal health services introduced in the year 2001. High cost of services and drugs has been shown to exert a strong negative impact on the use of health services by women, especially when their access to financial resources is limited.^[14] The removal of financial barriers to delivery and emergency care is essential if the Millennium Development Goal (MDG) 5 is to be realized.^[1] Furthermore, there was recruitment of specialists and junior doctors with provision of modern equipment in the hospital.

Table 1: Annual trend of maternal mortality ratio

Year	Number of total deliveries	Maternal deaths	Maternal mortality ratio
1999	375	15	4,000
2000	349	13	3,725
2001	609	20	3,284
2002	1512	20	1,323
2003	1722	26	1,510
2004	2325	20	860
2005	1728	16	926
2006	1550	20	1,290
2007	1228	12	977
2008	1189	9	757
Total	12,587	171	1,359

Total number: 171, Location: Abakaliki, Ebonyi state, Period: 1999-2008

Table 2: Causes of maternal death

Cause of death	Number of maternal deaths	Percentage
Hemorrhage	38	23.0
Puerperal sepsis	31	18.8
Ruptured uterus	23	13.9
Obstructed labor	22	13.3
Abortion	14	8.5
Pre-eclampsia/eclampsia	10	6.1
Ectopic pregnancy	2	1.2
Anesthetic death	2	1.2
HIV/AIDS	7	4.2
Anemia in pregnancy	3	1.8
Cerebrospinal meningitis	3	1.8
Liver disease	3	1.8
Severe malaria	2	1.2
Lassa fever	2	1.2
Asthma	1	0.6
Congestive heart failure	1	0.6
Diabetic ketoacidosis	1	0.6
	165	100

Total number: 165, Location: Abakaliki, Period: 1999-2008

Table 3: Mode of delivery and maternal mortality

Mode of delivery	Number of deaths	Percentage
Spontaneous vertex delivery	38	23.0
Cesarean section	47	28.5
Assisted breech delivery	2	1.2
Vacuum delivery	8	4.9
Craniotomy	3	1.8
Laparotomy for ruptured uterus	35	21.2
Died undelivered	18	10.9
	151	100

Total number: 151, Location: Abakaliki, Period: 1999-2008

This improved the quality of services and reduced institutional factors (delays), which have been shown to be a major contributor to maternal mortality in developing countries.^[14,17]

Majority of the maternal deaths, 82.4%, occurred amongst

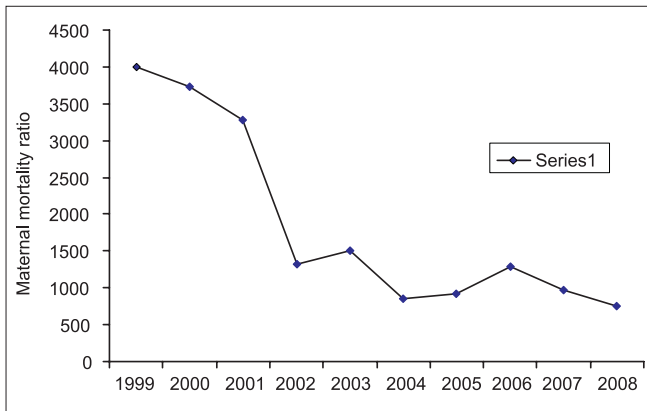


Figure 1: Graphic representation of the annual trend of maternal mortality ratio

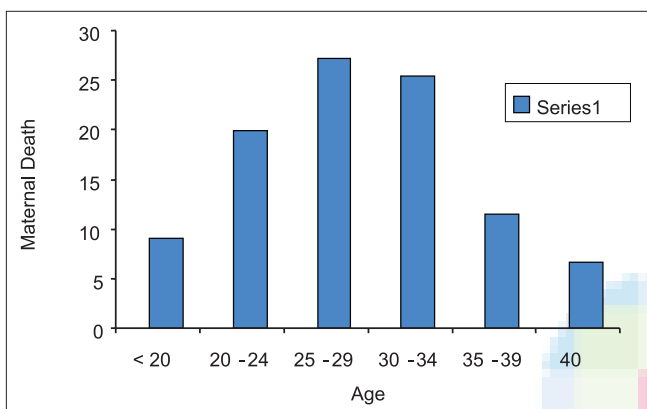


Figure 2: Bar chart showing the percentage of maternal mortality and age distribution

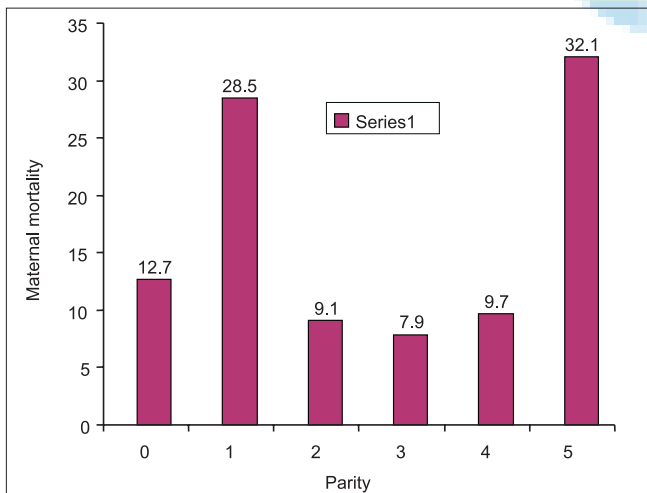


Figure 3: Shows age distribution and maternal mortality. The highest incidence of maternal death (27.3%) was noted in the age group of 25-29 years, followed by 25.5% and 20% in the age groups of 30-34 years and 20-24 years, respectively. Lowest incidence of maternal deaths (6.7%) was recorded in women who were 40 years and above

unbooked mothers. This was similar to other reports.^[13,17] Many mothers fail to receive antenatal care and, instead, arrive at the hospital for the first time when life is already endangered by difficult labor and advanced pregnancy complications.^[18]

The fact that 10.9% of the mothers died undelivered is a reflection of the weak or nonexistent referral system and lack of transportation in the area. Umeora *et al.*^[19] observed that delayed referrals by traditional birth attendants (TBAs) in the area also contributed a lot to maternal deaths.

Majority of the deaths (27.3%) occurred in the age group of 25-29 years. This suggests that maternal mortality commonly occurs in the prime and most reproductive part of life.^[15,16] This, however, contrasted with the findings of Aboyeji *et al.*^[20] which showed that maternal deaths were common in women who were 40 years and above.

The highest mortalities were seen in grand multiparas—32.1%—followed by primigravidas (28.5%). This is also in consonance with other reports.^[15,16] There is a need for special care for these groups of women so that the risks and complications common to them are anticipated and properly handled.

The mode of delivery responsible for the highest percentage of maternal deaths was caesarean section with a numerical value of 28.5%. The cesarean sections resulting in maternal deaths in the review were done as emergencies on unbooked patients, severely compromised by prolonged labors. In a study in Ilorin,^[21] emergency cesarean section had twice the risk of causing maternal death compared with elective caesarean section. This emphasizes the need for utilization of antenatal care services, early referral, adequate pre-operative resuscitation, and safe anesthesia.

Hemorrhage was the leading cause of maternal death in this review accounting for 23.0% of all deaths. In Calabar,^[17] obstetric hemorrhage was responsible for 32.23% of maternal deaths. Maternal deaths resulting from hemorrhage may be due to the high incidence of pre-existing anaemia, inefficient blood-banking facilities, and inadequate emergency obstetric care.^[6]

The second commonest cause of maternal death was sepsis, 18.8%. This contrasts with the report from Enugu^[22] which showed that sepsis (28.5%) was the leading cause of death. The availability of a wide range of antibiotics and drug-revolving fund, as well as the free maternal health services (which meant that treatment could be initiated without payment) probably accounted for the reduction in sepsis.

Ruptured uterus (13.9%) and obstructed labor (13.3%) were the third and fourth most common causes of deaths in this review. Audu and Ekele,^[23] observed that ruptured uterus was the leading cause of maternal deaths in Sokoto. The high percentage of ruptured uterus and obstructed labor is a peculiar finding in EBSUTH, Abakaliki. This is due to the health-seeking behavior of the population in the rural areas, cultural practices and attitude toward labor and deliveries (home deliveries are seen as the litmus test of womanhood), injudicious use of oxytocics by unskilled attendants, application of fundal

pressure by able-bodied men to achieve vaginal delivery, and poor transportation network from the hinterland.^[18]

Abortion at 8.5% was the fifth commonest cause of maternal death. Its contribution was not as significant as in other studies.^[24] This is related to the restrictive abortion law, and perception and attitude of health workers toward abortion. Consequently, abortion-related complication cases avoid public institutions. They prefer private hospitals to ensure confidentiality.^[24]

Pre-eclampsia and eclampsia accounted for 6.1% of the maternal deaths. This is lower than the incidence from other studies.^[13,15,16] The main reason for such high mortality in tertiary hospitals is late referrals, without anticonvulsant therapy.^[13]

Ectopic pregnancy was responsible for 1.2% of maternal deaths in this review as compared to 2.6% in the series reported from Maidugiri.^[25]

HIV/AIDS contributed to 4.2% of the deaths in this series. In Benin Nigeria,^[14] HIV/AIDS was the leading cause of death in 20.2% of the mothers. There is evidence that HIV/AIDS may have overtaken direct obstetric causes in some centers with a high HIV prevalence.^[26] HIV/AIDS impact both direct and indirect causes of maternal mortality by an associated increase in anemia, puerperal sepsis, postpartum hemorrhage, and a predisposition to opportunistic infections such as tuberculosis.^[26]

The fact that illiteracy is a major contributor to maternal mortality has been stressed.^[25] In this review, the highest maternal deaths (45.1%) occurred in those with no formal education; this decreased as the level of education increased. Education exerts an effect on health-seeking behavior by creating awareness, ensuring economic empowerment, and improved ability and freedom to make health-related decisions including choice of maternal services for use.^[27]

In conclusion, the free maternal health services, modern equipment, and adequate staff recruitment, which contributed to the observed decline in maternal mortality, should be sustained. There is a need to establish a functional blood-banking system and to adopt active management of the third stage of labor, which has been shown to reduce postpartum hemorrhage by 62%.^[28] Mothers should be encouraged to use available antenatal services. Delayed referrals, which contributed immensely to maternal mortality should be addressed by adequate sensitization of the TBAs and health workers at the referral hospitals to the need for early referral and provision of effective ambulance services to ease transportation difficulties.

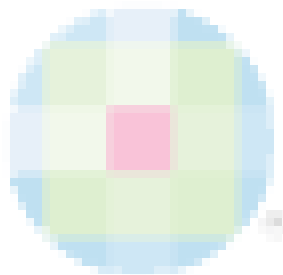
References

1. Barate P, Temmerman M. Why do mothers die? The silent Tragedy of Maternal Mortality Current women's health reviews 2009;5:230-8.
2. World Health Organization (WHO). Maternal mortality in 2005; Estimates developed by WHO, UNICEF, UNFPA and the World Bank. Geneva: World Health Organization (WHO); 2007.
3. Schuitemaker N, van Roosmalen J, Dekker G, van Dongen P, van Geijn H, Gravenhorst JB. Under reporting of maternal mortality in the Netherlands. *Obstet Gynaecol* 1997;90:78-82.
4. The state of the world's children 2008; Child survival. New York: United Nations Children's Fund; 2008.
5. Ronsmans C, Graham WJ. Maternal mortality: Who, when, where and which. *Lancet* 2006;368:1189-200.
6. Fournier P, Dumount A, Tourigny C, Dunkely G, Drame S. Improved access to comprehensive emergency obstetric care and its effect on institutional maternal mortality in rural Mali. *Bull World Health Organ* 2009;87:30-8.
7. National Population Commission: ORC Macro. MEASURE DHS+. Nigeria Demographic and Health Survey 2008. Abuja, Nigeria. National Population commission 2008.
8. Adam YM, Salihu HM, Sathiakumar N, Alexander GR. Maternal mortality in Northern Nigeria: A population-based study. *Eur J Obstet Gynecol Biol* 2003;109:153-9.
9. Federal Ministry of Health. Consolidated Health Sector Reform, National Economic Empowerment Development Strategy. Priorities for action. Abuja: Federal Ministry of Health, 2003.
10. Ngwan SD, Swende TZ. Maternal mortality in Jos Nigeria: A facility based prospective review. *Int J Bio Med Res* 2011;2:565-8.
11. Okaro JM, Umezuruike AC, Onah HE, Chukwuali LI, Ezugwu FO, Nweke PC. Maternal mortality at the University of Nigeria Teaching Hospital: Before and after Kenya. *Afr J Reprod Health* 2001;5:90-7.
12. Ibekwe PC, Dijemesi I. Obstetrics of Ebonyi State University Teaching Hospital, Abakaliki. Abstracts of the 2003 Conference held at Port Harcourt. *Trop J Obstet Gynaecol* 2003;20:32-3.
13. Abasiattai AM, Umoyiyo AJ. A 6-year review of maternal deaths in a teaching hospital in South-South, Nigeria. *The Internet-Journal of Gynaecology and Obstetrics* 2009 volume II Number I.
14. Omo-Aghoja LO, Aisien OA, Akuse JT, Bergstrom S, Okonofua FE. Maternal mortality and emergency obstetric care in Benin City, South-South Nigeria. *J Clin Med Res* 2010;2:55-60.
15. Jain M, Maharajah S. Maternal mortality - A retrospective analysis of ten years in a tertiary hospital. *Indian J Prer Soc med* 2003;34:103-11.
16. Abdulla A, Memon RAD, Saboohi S. Maternal mortality 2007-2008; Confidential inquiries of Ghulam Mohammed Mahar Medical College Hospital, Sukkur. *Professional Med J* 2010;17:291-4.
17. Agan TU, Archibong EI, Ekabua JE, Ekanem EI, Abeshi SE, Edentekhe TA, *et al.* Trends in maternal mortality at the University of Calabar Teaching Hospital, Nigeria 1999-2009. *Int J Women's Health* 2010;2:249-54.
18. Onah HE, Okaro JM, Umeh U, Chigbu CO. Maternal mortality in health institutions with emergency obstetric care facilities in Enugu State, Nigeria. *J Obstet Gynaecol* 2005;25:567-74.
19. Umeora OJ, Egwatu VE. The role of unorthodox and traditional birth care in maternal mortality. *Trop Doct*

- 2010;40:13-7.
20. Aboyeji AP. Trends in maternal mortality in Ilorin, Nigeria. *Trop J Obstet Gynaecol* 1998;15:15-20.
 21. Aboyeji AP, Fawole AA. Maternal mortality associated with caesarean section in Ilorin, Nigeria. *Trop J Med Res* 2003;7:4-9.
 22. Nwagha UI, Nwachukwu D, Dim C, Ibekwe PC, Onyebuchi A. Maternal mortality Trend in South-East Nigeria: Less Than a Decade to the Millennium Development Goals. *J Women's Health* 2010;19:323-7.
 23. Audu LR, Ekele BA. A ten year review of maternal mortality in Sokoto, northern Nigeria. *West Afr J Med* 2002;21:74-6.
 24. Enabudoso EJ, Gharoro EP, Ande Aba, Ekpe UP, Okohue EJ. Five year review of complicated induced abortions in University of Benin Teaching Hospital, Benin City. *Benin J Postgrad Med* 2007;9:13-21.
 25. Audu BM, Takai UI, Bukar M. Trends in maternal mortality at University of Maidugiri Teaching Hospital, Maidugiri, Nigeria – A five year review. *Niger Med J* 2010;51:147-51.
 26. Malntyre J. Mothers infected with HIV. *Br Med Bull* 2003;67:127-35.
 27. Babalola S, Fatusi A. Determinants of use of maternal services in Nigeria – looking beyond individual and household factors. *BMC Pregnancy and Childbirth* 2009;9:43.
 28. Prendiville WJ, Elbourne D, McDonald SJ. WITHDRAWN: Active versus expectant management in the third stage of labour. *Cochrane Database Syst Rev* 2009;(3):CD000007.

How to cite this article: Ezegwui HU, Onoh RC, Ikeako LC, Onyebuchi A, Umeorah J, Ezeonu P, Ibekwe P. Investigating Maternal Mortality in a Public Teaching Hospital, Abakaliki, Ebonyi State, Nigeria. *Ann Med Health Sci Res* 2013;3:75-80.

Source of Support: Nil. **Conflict of Interest:** None declared.



New features on the journal's website

Optimized content for mobile and hand-held devices

HTML pages have been optimized for mobile and other hand-held devices (such as iPad, Kindle, iPod) for faster browsing speed.

Click on **[Mobile Full text]** from Table of Contents page.

This is simple HTML version for faster download on mobiles (if viewed on desktop, it will be automatically redirected to full HTML version)

E-Pub for hand-held devices

EPUB is an open e-book standard recommended by The International Digital Publishing Forum which is designed for reflowable content i.e. the text display can be optimized for a particular display device.


Click on **[EPub]** from Table of Contents page.

There are various e-Pub readers such as for Windows: Digital Editions, OS X: Calibre/Bookworm, iPhone/iPod Touch/iPad: Stanza, and Linux: Calibre/Bookworm.

E-Book for desktop

One can also see the entire issue as printed here in a 'flip book' version on desktops.

Links are available from Current Issue as well as Archives pages.

Click on  View as eBook