

RESEARCH ARTICLE

Isolation and Characterization of Two Squalene Epoxidase Genes from *Botryococcus braunii*, Race B

Hidenobu Uchida^{1,2}, Koremitsu Sumimoto^{1,2}, Victor Marco Emmanuel Ferriols^{1,3}, Kenji Imou⁴, Kiyotaka Saga⁴, Kenichi Furuhashi⁴, Shigeki Matsunaga^{1,2}, Shigeru Okada^{1,2*}

1 Laboratory of Aquatic Natural Products Chemistry, Graduate School of Agricultural and Life Sciences, The University of Tokyo, Yayoi, Bunkyo, Tokyo 113–8657, Japan, **2** Japan Science and Technology Agency-Core Research for Evolutional Science and Technology (CREST), Gobancho, Chiyoda, Tokyo 102–0076, Japan, **3** Institute of Aquaculture, University of the Philippines Visayas, Miagao, 5023 Iloilo, Philippines, **4** Laboratory of Biological and Mechanical Engineering, Graduate School of Agricultural and Life Sciences, The University of Tokyo, Yayoi, Bunkyo, Tokyo 113–8657, Japan

* aokada@mail.ecc.u-tokyo.ac.jp



OPEN ACCESS

Citation: Uchida H, Sumimoto K, Ferriols VME, Imou K, Saga K, Furuhashi K, et al. (2015) Isolation and Characterization of Two Squalene Epoxidase Genes from *Botryococcus braunii*, Race B. PLoS ONE 10(4): e0122649. doi:10.1371/journal.pone.0122649

Academic Editor: Douglas Andrew Campbell, Mount Allison University, CANADA

Received: November 13, 2014

Accepted: February 11, 2015

Published: April 1, 2015

Copyright: © 2015 Uchida et al. This is an open access article distributed under the terms of the [Creative Commons Attribution License](http://creativecommons.org/licenses/by/4.0/), which permits unrestricted use, distribution, and reproduction in any medium, provided the original author and source are credited.

Data Availability Statement: Nucleotide sequences of BbSQEs-I and -II were deposited in the DDBJ bank under accession numbers of AB923908 and AB986538, respectively. Reads are registered with the accession numbers DXR026011 to DXR026014.

Funding: This work was financially supported by Japan Science and Technology Agency (<http://www.jst.go.jp/>), CREST. The RNAseq was financially supported by the Strategic Development of Next-generation Bioenergy Utilization Technology entitled, "Efficient Production of Hydrocarbon from Microalgae" by the New Energy and Industrial Technology Development Organization (NEDO)

Abstract

The B race of the green microalga *Botryococcus braunii* produces triterpene hydrocarbons, botryococcenes and methylsqualenes that can be processed into jet fuels with high heating values. In this alga, squalene is also converted into membrane sterols after 2,3-epoxidation. In the present study, cDNA clones of two distinct squalene epoxidases (*BbSQE-I* and *-II*) were isolated. Predicted amino acid sequences encoded on these genes are 45% identical with each other. Introduction of *BbSQE-I* or *-II* into *Saccharomyces cerevisiae erg1* mutants resulted in the complementation of ergosterol auxotrophy. The relative expression level of *SQE-II* increased 3.5-fold from the early stage to the middle phase of a culture period of 42 days, while that of *SQE-I* was almost constant throughout the culture period. Southern blot analyses suggested that these genes are single-copied genes. This is the first report on the isolation of functional SQEs that are encoded in duplicated loci in the algal genome.

Introduction

The colonial green microalga *Botryococcus braunii* produces substantial amounts of hydrocarbons and is regarded as one of the most promising sources of algal biofuel. According to the types of hydrocarbons produced, *B. braunii* is classified into three races, namely A, B and L. Strains of race A produce *n*-alkadienes and *n*-alkatrienes [1], those of race B generate triterpenes in the form of botryococcenes and methylsqualenes [2], [3], and those of race L synthesize a tetraterpene as lycopadiene [4]. Among these different types of hydrocarbons, triterpenes from race B are thought to be the most promising source of biofuels because they can be processed into a fuel with higher octane numbers than those produced by race A [5]. Furthermore,

(<http://www.nedo.go.jp/english/index.html>). All of the founders had no role in study design, data collection and analysis, decision to publish, or preparation of the manuscript.

Competing Interests: The authors have declared that no competing interests exist.

hydrocarbon contents in race B, which can reach around 40%, and in some cases even more than 50% of algal dry weight, are much higher than those in race L.

In many eukaryotic organisms, one molecule of squalene, is produced from two molecules of farnesyl pyrophosphate (FPP). The enzymatic reaction of this process, which is performed by squalene synthase (SS), includes two steps of chemical conversions: formation of the intermediate, presqualene pyrophosphate (PSPP) and rearrangement of the carbon-carbon bond in a cyclopropane ring in PSPP to form C1' to C1 condensation of two farnesyl residues [6]. The cDNA cloning of SS, which seems to be a conventional enzyme concerned with the production of squalene as the precursor for sterol biosynthesis, has been performed in *B. braunii* [7]. In addition to this SS enzyme, this alga was found to possess three distinct squalene synthase-like proteins, SSLs-1, 2, and 3 [8]. SSL-1 catalyzes only the first half of the reaction by SS, namely formation of PSPP from two molecules of FPP, while SSL-3 converts PSPP into C₃₀ botryococcene with a C1'-C3 linkage of farnesyl residues (Fig 1). The C₃₀ botryococcene is further methylated [9] into C₃₁ to C₃₇ botryococcenes [2] that are then excreted outside cells and deposited in the extracellular matrix as the major components of liquid oils. On the other hand, SSL-2 converts PSPP into squalene. There are therefore two distinct routes to synthesize squalene from FPP in the B race of *B. braunii*. Subsequently, some part of squalene is oxidized into squalene 2,3-epoxide and then metabolized into sterols as is in many eukaryotic organisms. As mentioned above, there are also C₃₁-C₃₄ methylsqualenes in the B race of the alga [3], [10] as secondary metabolites in addition to C₃₀ squalene that can be used for sterol biosynthesis. In contrast to botryococcenes, these methylsqualenes exist merely as minor components in the liquid oil fraction. Some of the methylsqualenes are, however, epoxidized and further

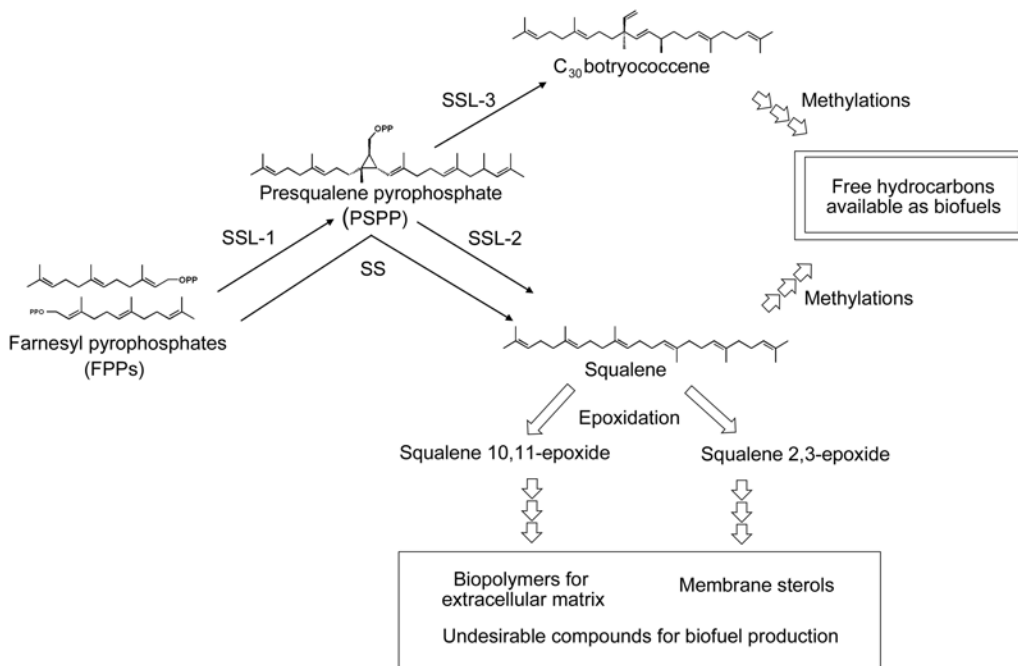


Fig 1. Biosynthesis and metabolism of triterpenes in *Botryococcus braunii*, race B. Squalene synthase (SS) converts two molecules of farnesyl pyrophosphate (FPP) into one molecule of squalene via presqualene pyrophosphate (PSPP). Squalene synthase-like protein (SSL)-1 (SSL-1) catalyzes formation of PSPP from two FPPs, SSL-2 converts PSPP into squalene, and SSL-3 synthesizes C₃₀ botryococcene from PSPP. Squalene and C₃₀ botryococcene are methylated and excreted outside cells as free hydrocarbons that can be used as biofuels. Squalene is epoxidized into squalene 2,3-epoxide that is the precursor of membrane sterols or into squalene 10,11-epoxide that is further converted into hydrophobic secondary metabolites including biopolymers.

doi:10.1371/journal.pone.0122649.g001

converted into various hydrophobic compounds such as unique carotenoids or even biopolymers that make up the extracellular matrix [11]. At the moment, it has not been uncovered if these methylsqualenes in the B race of *B. braunii* are derived from squalene molecules synthesized by the conventional SS or the combination of SSL-1 and SSL-2.

From the viewpoint of heating values of biofuels, introduction of oxygen atoms into molecules of hydrocarbons is definitely disadvantageous. Thus it is desirable to keep oils produced by the B race of *B. braunii* in the style of free extracellular hydrocarbons, such as botryococenes or methylsqualenes by preventing introduction of oxygen atoms. In this context, the regulation of squalene epoxidases in *B. braunii* therefore presents itself as an important key point in order to attain commercial production of algal hydrocarbon oils.

In the present study, the authors have performed cDNA cloning of squalene epoxidase homologues from this alga, characterized their functions, and surveyed their gene expression patterns. Following considerations of evolutionary implications for duplicated genes in triterpene-metabolism enzymes might unveil possible reasons why *B. braunii* evolved sophisticated triterpene biosyntheses pathways that are specific to this alga.

Materials and Methods

Culture

Botryococcus braunii, race B, Showa [12] was used in this study. Culture conditions were the same as previously reported [13].

The cDNA cloning of *BbSQEs-I* and *-II*

Total RNA was isolated as previously reported [14]. The quality of total RNA was evaluated by A260/A280 ratio measured with a spectrophotometer and the integrity of ribosomal RNA bands was visualized by gel electrophoresis. In order to determine full-length sequences, overlapping *BbSQE-I* cDNA clones were isolated by initially amplifying an internal region by RT-PCR, followed by 5' and 3' rapid amplification of cDNA ends (RACEs) strategies. Initial sequence information for a *B. braunii* squalene epoxidase-like gene was obtained from an EST database [8] using the tBLASTn function with the protein sequence encoded on *Chlamydomonas reinhardtii* Cre15.g645100.t1.1 as a query sequence. This locus was detected in the phytozome 8 (***) . This resulted in a hit corresponding to the EST contig_14095. To amplify this contig by RT-PCR, the forward primer SQEI-internal-F and reverse primer SQEI-internal-R were subsequently designed. The nucleotide sequences of primers used in this study are listed in S1 Table. The template for RT-PCR was single strand cDNA which was synthesized using either oligo(dT) primer or random hexamers from the RNA of algae harvested at 6 days after inoculation into new medium. After obtaining a 0.3-kb internal fragment clone, 5' and 3' RACEs were performed using SMARTer RACE cDNA Amplification Kit (Clontech). For the 5' RACE, the kit-supplied universal primer A mix was used as the forward primer SQEI-5RACE-F1 while the gene-specific SQEI-5RACE-R1 was used as the reverse primer. The 3' RACE was performed using the gene-specific forward primer SQEI-3RACE-F and the kit-supplied universal primer A mix as the reverse primer SQEI-3RACE-R. For further extension of the cDNA 5' end, another 5' RACE was performed using a phagemid 5' anchor primer as the forward primer SQEI-5RACE-F2 and the gene-specific reverse primer SQEI-5RACE-R2 with a previously described non-normalized cDNA library [7] as a template. For the construction of this library, total RNA was subjected to oligo(dT) column chromatography and the resulting poly(A) RNA was used as templates for single-stranded cDNA synthesis using oligo(dT) primer. From this, double-stranded cDNA was synthesized and packaged into lambda phage using ZAP-cDNA Synthesis Kit (Stratagene). RACE products were cloned and overlapping *SQE-I* sequences that

cover the entire ORF were obtained. In the sequencing of every fragment, more than three independent plasmids were obtained, and all of these plasmids were subjected to double-strand sequencing to derive a consensus sequence. In order to obtain a full-length *SQE-I* cDNA clone, RT-PCR was further performed using the forward primer *SQEI-full-F* and the reverse primer *SQEI-full-R*. A 1.9-kb full-length ORF clone was finally obtained and is referred to as *pSQEI.1903bp/pGEMTeasy*.

Using RNA-seq data obtained from the algal samples harvested 17 days after inoculation into new culture medium, another squalene epoxidase homologue (*BbSQE-II*) was found by using known squalene epoxidase sequences as queries for a local BLAST search. This resulted in a hit corresponding to the RNA-seq contig_37075, which contained a tentative 1617-bp ORF. In order to isolate the corresponding full-length cDNA, the forward primer *SQEII-full-F* and the reverse primer *SQEII-full-R* were designed to include the tentative ORF and portions of the 5' and 3' UTRs. RT-PCR was performed using this set of primers and the single strand cDNA templates synthesized from 6-day old cultures as previously mentioned. Three independent clones were subjected to double-strand sequencing, and a consensus for *BbSQE-II* sequence was obtained. One of these clones is referred to as *pSQEII.1848bp/pGEMTeasy*.

Complementation of yeast *erg1* mutant with *BbSQEs*

The ORF fragments of *BbSQEs-I* and *-II* were amplified by PCR using the full-length cDNA clones as templates. The primers *SQEI-ORF-F* and *SQEI-ORF-R* were used for *BbSQE-I* while the primers *SQEII-ORF-F* and *SQEII-ORF-R* were used to amplify *BbSQE-II*. The PCR product for *BbSQE-I* was digested with *SpeI* and *SalI* and subcloned into yeast expression vector *pWV3* [15] to generate *pSQEI.517aa/pWV3*. The PCR product for *BbSQE-II* was digested with *SpeI* and *XhoI* and subcloned into *pWV3* to generate *pSQEII.538aa/pWV3*. Double-strand nucleotide sequencing of *pSQEI.517aa/pWV3* and *pSQEII.538aa/pWV3* indicated that the amino acid sequences encoded on these clones had no amino acid substitutions as compared with corresponding protein sequences encoded on consensus *SQE* nucleotide sequences, although the 30th glutamate codon in *pSQEI.517aa/pWV3* was synonymously substituted from *gag* to *gaa*, and the 195th alanine codon in *pSQEII.538aa/pWV3* was synonymously changed from *gac* to *gcg* due to PCR errors. During subcloning, no artificial initiation codons were generated in front of the ORFs of *BbSQEs-I* and *-II*.

Resulting plasmids were introduced into the *Saccharomyces cerevisiae erg1* mutant KLN1 [16] using Frozen-EZ Yeast Transformation II Kit (Zymo Research). The *pWV3* vector contains the *LEU2* selectable marker, and introduced cDNA is driven by a constitutive *ADH1* promoter. After introducing *pSQEI.517aa/pWV3* or *pSQEII.538aa/pWV3* into KLN1, transformant candidates were selected under anaerobic conditions on solidified—Leu SD medium supplemented with ergosterol. Colonies exhibiting *LEU2* phenotypes were selected. Introduction of *SEQ* plasmids into yeast cells were further checked by colony PCR using gene-specific ORF primers mentioned above. Vector controls were checked using the forward primer *Vector-F* and the reverse primer *Vector-R*. Selected yeast colonies were further streaked successively twice more onto—Leu SD medium containing ergosterol. In order to test for complementation of ergosterol auxotrophy, transformants were streaked on solidified YPD medium without ergosterol supplementation, and incubated at 30°C under aerobic condition for four days.

Southern blot analyses

Genomic DNA was extracted from *B. braunii* cells using the cetyl trimethyl ammonium bromide (CTAB) method [17]. After digesting with restriction enzymes, Southern blot hybridization was performed according to a previous report [18]. For the detection of *BbSQE-I*,

a DIG-labeled 325-bp probe was synthesized with the forward primer SQEI-probe-F and the reverse primer SQEI-probe-R using PCR DIG Probe Synthesis Kit (Roche). This probe fragment corresponds to the 325-bp region downstream from the 1278th base in the ORF. The *BbSQE-II* probe was similarly synthesized using the forward primer SQEII-probe-F and the reverse primer SQEII-probe-R. This probe fragment corresponds to the region ranging from 11th to 1487th base in the ORF. Hybridization was performed at 37°C using DIG Easy Hyb Granules (Roche). After stripping the *BbSQE-I* probe, the same membrane was re-hybridized with *BbSQE-II* probe. Hybridized genomic fragments were detected using a DIG Luminescent Detection Kit (Roche). Luminescent signal was detected using ImageQuant LAS4000 mini (GE Healthcare).

RNA-seq analysis

Total RNA was isolated from algae harvested at 0 and 17 days after inoculation into new medium, and quality of isolated RNA was checked by A260/A280 ratio measured with a spectrophotometer and integrity of ribosomal RNA bands was visualized by gel electrophoresis. From 2 µg of total RNA isolated from day 0 culture, or the same amount of day 17 total RNA, cDNA libraries were constructed using Illumina RNA TruSeq Sample Preparation Kit. The 2.2 fmol of cDNA samples were loaded on an Illumina HiSeq to generate 101 bp paired-end reads (2 x 101). After trimming adaptor sequences, *de novo* assembly was performed using Trinity, released Feb. 25, 2013 [19]. Mapping was performed using Bowtie version 0.12.8 [20], and expression level was estimated using RSEM [21]. Tablet [22] was used to check mapped reads. Reads were deposited in DDBJ DRA with the accession numbers DRX026011 to DRX026014.

Quantitative RT-PCR analysis

From aliquots of a liquid culture, total RNA was extracted in the same way described above and the quality was evaluated by A260/A280 ratio measured with a spectrophotometer, treated with Recombinant DNase I (Takara), subjected to phenol/chloroform extraction, precipitated with ethanol, and dissolved with distilled water. Using 5 ng of RNA as template, cDNA was synthesized using iScript Advanced cDNA Synthesis Kit for RT-qPCR (BioRad), and reacted with 10 µl of SsoFast EvaGreen Supermix (BioRad), according to manufacturer's instructions. The reaction mixture of above mentioned cDNA synthesis kit includes both oligo(dT) and random primers. Primers to detect *BbSQEs-I* and *-II* were as follows: SQEI-qRT-PCR-F, SQEI-qRT-PCR-R; SQEII-qRT-PCR-F and SQEII-qRT-PCR-R. The expected PCR product sizes originating from either sets of SQE-I or SQE-II primers were both 103 bp. Annealing temperatures for above-mentioned primer sets were optimized using a thermal gradient block option. Efficiency of amplification was maximized after checking amplification curves (RFU vs. cycles) and E values shown in standard curves (Cq vs. log starting quantity). Specificity of amplified PCR products for two primer sets, i.e. amplification of only 1 transcript in these reactions, was confirmed by observing a single peak in the melt peaks (-d(RFU)/dT vs. temperature). *B. braunii glyceraldehyde 3-phosphate dehydrogenase* gene (*BbGAPDH*) transcript was used as an internal standard for the calculation of relative amounts of *BbSQE* transcripts. As primers to amplify a 121-bp fragment of *BbGAPDH*, the forward primer GAPDH-qRT-PCR-F and the reverse primer GAPDH-qRT-PCR-R were used. The qRT-PCR was performed using CFX96 Real Time PCR Detection System coupled to a C1000 Thermal Cycler (BioRad). Cycling condition was as follows: 1 cycle of enzyme activation at 95°C for 30 sec, 45 cycles of denaturation at 95°C for 2 sec and annealing/extension at 56.0°C for 5 sec, and one cycle for melt curve determination, continuous from 65°C to 95°C in 0.5°C increments every 5 sec. Annealing temperature used for GAPDH-qRT-PCR-F and -R was the same as that for SQEI-qRT-PCRs or

SQEII-qRTPCRs. This annealing temperature gave a best level of *GAPDH* amplification in RFU vs. cycle curve and a best E value in standard curve. Specificity of amplified PCR product for this primer set was also confirmed by observing a single peak in the melt peaks.

Results and Discussion

cDNA cloning and amino acid sequence similarity analyses

In order to isolate homologues of squalene epoxidase from *Botryococcus braunii*, Showa, available EST and RNA-seq data were initially surveyed from which two independent contigs were mined with a local BLAST function using known sequences of squalene epoxidase from other organisms as queries.

Through routine cDNA cloning procedures, two corresponding full-length clones, pSQEI.1903b/pGEMTeasy and pSQEII.1848bp/pGEMTeasy were isolated independently. Nucleotide sequencing of pSQEI.1903b/pGEMTeasy showed that this clone included a 1554-bp open reading frame (ORF), which was preceded by 318-bp 5' untranslated region (UTR) and followed by 31-bp 3' UTR. Clone pSQEII.1848bp/pGEMTeasy possessed a 1617-bp ORF, which was preceded by 57-bp 5' UTR and followed by 174-bp 3' UTR. The corresponding genes are referred to as *Botryococcus braunii* squalene epoxidases-I and-II (*BbSQEs-I* and-II). Nucleotide sequences of *BbSQEs-I* (AB923908) and-II (AB986538) were deposited in the DDBJ bank. Nucleotide sequences of the ORFs of *BbSQEs-I* and-II shared 56% homology while the predicted amino acid sequences of *BbSQEs-I* and -II shared 45% identity with each other.

In order to estimate the function of *BbSQEs-I* and -II, predicted amino acid sequences were compared to squalene epoxidases from land plants ([Fig 2A](#)), *Arabidopsis thaliana* (*AtSQE1-6*) [23], *Medicago truncatula* (*MtSEs1* and 2) [15], *Nigella sativa* (*NsSQE*) [24] and *Euphorbia tirucalli* (*EtSE*) [25], which functionally complemented the *Saccharomyces cerevisiae erg1* mutant. The deduced amino acid sequence of *BbSQE-I* shared considerable identities with *NsSQE1* (39%), *EtSE* (39%), *AtSQE1* (37%), and *MtSE1* (37%). The predicted amino acid sequence of *BbSQE-II* shared relatively higher identities with *NsSQE1* (53%), *AtSQE1* (52%), *MtSE1* (52%), and *EtSE* (51%). The authors further compared *BbSQE* sequences of the two conserved domains [26], which are indispensable for NAD-binding (motif I) or substrate binding (motif II) in *S. cerevisiae* SQE. Complementation of *erg1* can be lost when a point mutation at the residue of either G₆₇S, or D₃₄₇F,W,P is introduced to the amino acid sequence of yeast *ERG1* [26], where the numbering of amino acid residues are referred according to that in the *AtSQE1* sequence shown in [Fig 2B](#). At the 67th and 347th residues, *BbSQEs-I* and -II retained the conserved amino acids, G and D, respectively. As compared with consensus sequences among seven plant SQEs that complemented the *erg1* mutant, *BbSQE-I* had five amino acid substitutions at residues 71, 78, 79, 81 and 89, whereas *BbSQE-II* sequence possessed only two at residues 79 and 89. In motif II, *BbSQE-I* had eight amino acid substitutions at residues 340, 342, 344, 348, 349, 355, 362 and 367 as compared with the plant consensus sequence, while *BbSQE-II* sequence had only one substitution at residue 367. These results point to the higher degree of conservation of *BbSQE-II* in relation to those of functional plant SQE sequences compared to *BbSQE-I*.

Functional characterization by yeast mutant complementation

In order to investigate the functions of *BbSQEs-I*, and-II, corresponding cDNA clones were introduced into the *Saccharomyces cerevisiae erg1* mutant KLN1 ([Fig 3](#)). KLN1 cells cannot grow on medium which is not supplemented with ergosterol due to disruption of the endogenous gene for squalene epoxidase [16]. When *BbSQE-I* was introduced into KLN1, the ergosterol auxotrophy in this mutant was restored. Under the same culture conditions, no growth was

A

BbSQE-I	1	-----MONTGRASVEEDLVLP-----TPSSNRYVE	26
BbSQE-II	1	-----MCAPIALRDLGNGSEVPE-----MVQSDNRYG	26
Arabidopsis-1	1	-----MESQLWNWILP-LLISSLHISVAFVGFVFKRNGRLHRDRKT-----VSTVTSVVG	51
Arabidopsis-2	1	MKPFVIRNLRPFQSTLRSSLLYTNHRPSSRFSLSLSTRRTTGATYIRRWKATAAQTCLKSAVNSVTMMKPAKIALDQFIASLFTLELLYILRRSSNKNKNRGL-----VVSONDT-V	111
Arabidopsis-3	1	-----MAPTIFVDCILITTFVASLFAHLLLVLRSS--KTIHGS-----VNVNRGT-L	47
Medicago-1	1	-----MIDPYFGG--WITCTLITLAALYNFLFSRKNHSDSTTEN-----ITTATGECR	47
Medicago-2	1	-----MDLYNIG--WILSSVLSLFAALYNIIFAGKKNYDVNEKVNQREDSVTSTDAEIK	52
Euphorbia	1	-----MEVIFDTYIFG--TFPASCALFLLFIRPKVKMGKIREISS-----INTONDTAI	50
Nigella	1	-----MMEVYVG--VVIASLGLGIFLH--FVNKNKQQOQRK-----MVENNGECI	43
Motif I			
BbSQE-I	27	EDPEIW-----DILIVGAGVCSALAHSCGLAIRRVLLERDRQDRVWVGEVMPGGILRLKDLGDHCLDRIDAQOILCACMENEENANLPE-----IPAHAFPHG	126
BbSQE-II	27	SDPQEW-----DILIVGAGVAGCALAHTCKDGRRLVIERLNSQDRHVGELLOPGGMLLEELGLENCVTGIDSKVFCYCMERNGQEAUVVSSNEFSSNRFPCWAGRSFHHG	138
Arabidopsis-1	52	SVNITGDTV-----ADIVIVGAGVAGSALAYTLGKDRRWHVIERLNSQDRHVGELLOPGGMLLEELGLENCVTGIDSKVFCYCMERNGQEAUVVSSNEFSSNRFPCWAGRSFHHG	162
Arabidopsis-2	112	SKNLETEVDSG-----DILIVGAGVAGSALAHSCGLAIRRVLLERDRQDRVWVGEVMPGGILRLKDLGDHCLDRIDAQOILCACMENEENANLPE-----IPAHAFPHG	224
Arabidopsis-3	48	TVKSGTDV-----DILIVGAGVAGSALAHSCGLAIRRVLLERDRQDRVWVGEVMPGGILRLKDLGDHCLDRIDAQOILCACMENEENANLPE-----IPAHAFPHG	156
Medicago-1	48	FENPNGD-----DILIVGAGVAGSALAYTLGKDRRWHVIERLNSQDRHVGELLOPGGMLLEELGLENCVTGIDSKVFCYCMERNGQEAUVVSSNEFSSNRFPCWAGRSFHHG	156
Medicago-2	53	SDKLNGD-----DILIVGAGVAGSALAHSCGLAIRRVLLERDRQDRVWVGEVMPGGILRLKDLGDHCLDRIDAQOILCACMENEENANLPE-----IPAHAFPHG	161
Euphorbia	51	TFPKSGT-----DILIVGAGVAGSALAHSCGLAIRRVLLERDRQDRVWVGEVMPGGILRLKDLGDHCLDRIDAQOILCACMENEENANLPE-----IPAHAFPHG	159
Nigella	44	TSSINGQKHEEGT-----DILIVGAGVAGSALAYTLGKDRRWHVIERLNSQDRHVGELLOPGGMLLEELGLENCVTGIDSKVFCYCMERNGQEAUVVSSNEFSSNRFPCWAGRSFHHG	158
*			
BbSQE-I	127	REVRIRLRAAAAHANVTRCAIVTSLNIVGSSALGGGSEVCGIYVRSRDPGLQRRMAHITVAQDGMYSNLRPKTRDRKVVDSVYVAVTLSGKIKERROFFIQIYDAE--LFSITVALSSSE	245
BbSQE-II	139	REVRIRLRAAAAHANVTRCAIVTSLNIVGSSALGGGSEVCGIYVRSRDPGLQRRMAHITVAQDGMYSNLRPKTRDRKVVDSVYVAVTLSGKIKERROFFIQIYDAE--LFSITVALSSSE	258
Arabidopsis-1	163	REIQRVREKASLSPNVOLGCGTVLSLLEEG-----TIKGVYRTKEGNEFRSABITLIVCDGCFNSLRSSICNPKVDFVPSCEVGLVLENCDFEFNANGHVILGDSPELILYPISSSE	275
Arabidopsis-2	225	REIQRVREKASLSPNVOLGCGTVLSLLEEG-----TIKGVYRTKEGNEFRSABITLIVCDGCFNSLRSSICNPKVDFVPSCEVGLVLENCDFEFNANGHVILGDSPELILYPISSSE	337
Arabidopsis-3	157	REIQRVREKASLSPNVOLGCGTVLSLLEEG-----TIKGVYRTKEGNEFRSABITLIVCDGCFNSLRSSICNPKVDFVPSCEVGLVLENCDFEFNANGHVILGDSPELILYPISSSE	269
Medicago-1	157	REIQRVREKASLSPNVOLGCGTVLSLLEEG-----TIKGVYRTKEGNEFRSABITLIVCDGCFNSLRSSICNPKVDFVPSCEVGLVLENCDFEFNANGHVILGDSPELILYPISSSE	269
Medicago-2	162	REIQRVREKASLSPNVOLGCGTVLSLLEEG-----TIKGVYRTKEGNEFRSABITLIVCDGCFNSLRSSICNPKVDFVPSCEVGLVLENCDFEFNANGHVILGDSPELILYPISSSE	274
Euphorbia	160	REIQRVREKASLSPNVOLGCGTVLSLLEEG-----TIKGVYRTKEGNEFRSABITLIVCDGCFNSLRSSICNPKVDFVPSCEVGLVLENCDFEFNANGHVILGDSPELILYPISSSE	272
Nigella	159	REIQRVREKASLSPNVOLGCGTVLSLLEEG-----TIKGVYRTKEGNEFRSABITLIVCDGCFNSLRSSICNPKVDFVPSCEVGLVLENCDFEFNANGHVILGDSPELILYPISSSE	271
Motif II			
BbSQE-I	246	RVVMTVVSQRFES-CTAALQDFLSCVAFNMRHYLEFLLAVKREHFRFLQTKTLNRFQRKIVIMLGSINMRHPLTGGGMTVALDITKILKDMVDVTVIRQDHIARESTRLEL	364
BbSQE-II	259	RVVMTVVSQRFES-CTAALQDFLSCVAFNMRHYLEFLLAVKREHFRFLQTKTLNRFQRKIVIMLGSINMRHPLTGGGMTVALDITKILKDMVDVTVIRQDHIARESTRLEL	373
Arabidopsis-1	276	VRCLVDVPEOKVPSLANGEMKNYLKTVAPOVPEHEVYDSFAAIVDQGNIKSMPNRSMPADPPTPEGALLMGDAFNMRHPLTGGGMTVALDITKILKDMVDVTVIRQDHIARESTRLEL	394
Arabidopsis-2	338	VRCLVDVPEOKVPSLANGEMKNYLKTVAPOVPEHEVYDSFAAIVDQGNIKSMPNRSMPADPPTPEGALLMGDAFNMRHPLTGGGMTVALDITKILKDMVDVTVIRQDHIARESTRLEL	456
Arabidopsis-3	270	VRCLVDVPEOKVPSLANGEMKNYLKTVAPOVPEHEVYDSFAAIVDQGNIKSMPNRSMPADPPTPEGALLMGDAFNMRHPLTGGGMTVALDITKILKDMVDVTVIRQDHIARESTRLEL	388
Medicago-1	270	VRCLVDVPEOKVPSLANGEMKNYLKTVAPOVPEHEVYDSFAAIVDQGNIKSMPNRSMPADPPTPEGALLMGDAFNMRHPLTGGGMTVALDITKILKDMVDVTVIRQDHIARESTRLEL	388
Medicago-2	275	VRCLVDVPEOKVPSLANGEMKNYLKTVAPOVPEHEVYDSFAAIVDQGNIKSMPNRSMPADPPTPEGALLMGDAFNMRHPLTGGGMTVALDITKILKDMVDVTVIRQDHIARESTRLEL	393
Euphorbia	273	VRCLVDVPEOKVPSLANGEMKNYLKTVAPOVPEHEVYDSFAAIVDQGNIKSMPNRSMPADPPTPEGALLMGDAFNMRHPLTGGGMTVALDITKILKDMVDVTVIRQDHIARESTRLEL	391
Nigella	272	VRCLVDVPEOKVPSLANGEMKNYLKTVAPOVPEHEVYDSFAAIVDQGNIKSMPNRSMPADPPTPEGALLMGDAFNMRHPLTGGGMTVALDITKILKDMVDVTVIRQDHIARESTRLEL	390
*			
BbSQE-I	365	NRRKELSAVMNLANLVYRVEAEPGGISQQLRESAFCYLRAGCWCSSRFANLIGGLDEREYVWVHSGVAGSGILGFFSCENPLTGLLKTMM--MLWEIIVLWPEQLAEGGPAIFEP	482
BbSQE-II	374	NRRKELSAVMNLANLVYRVEAEPGGISQQLRESAFCYLRAGCWCSSRFANLIGGLDEREYVWVHSGVAGSGILGFFSCENPLTGLLKTMM--MLWEIIVLWPEQLAEGGPAIFEP	493
Arabidopsis-1	395	TKRKPVASTINLALAGALYVFCSPDEARKEKMQAQCDFYLSLGGVSSSPVALSGLNPRPMSLVLHHEBVAIYVGRLLLPFPSPKRLWLIGIR--LIASASGIIIPKIKAEGRVQMF	511
Arabidopsis-2	457	TKRKPVASTINLALAGALYVFCSPDEARKEKMQAQCDFYLSLGGVSSSPVALSGLNPRPMSLVLHHEBVAIYVGRLLLPFPSPKRLWLIGIR--LIASASGIIIPKIKAEGRVQMF	573
Arabidopsis-3	389	TKRKPVASTINLALAGALYVFCSPDEARKEKMQAQCDFYLSLGGVSSSPVALSGLNPRPMSLVLHHEBVAIYVGRLLLPFPSPKRLWLIGIR--LIASASGIIIPKIKAEGRVQMF	505
Medicago-1	389	TKRKPVASTINLALAGALYVFCSPDEARKEKMQAQCDFYLSLGGVSSSPVALSGLNPRPMSLVLHHEBVAIYVGRLLLPFPSPKRLWLIGIR--LIASASGIIIPKIKAEGRVQMF	505
Medicago-2	394	TKRKPVASTINLALAGALYVFCSPDEARKEKMQAQCDFYLSLGGVSSSPVALSGLNPRPMSLVLHHEBVAIYVGRLLLPFPSPKRLWLIGIR--LIASASGIIIPKIKAEGRVQMF	510
Euphorbia	392	TKRKPVASTINLALAGALYVFCSPDEARKEKMQAQCDFYLSLGGVSSSPVALSGLNPRPMSLVLHHEBVAIYVGRLLLPFPSPKRLWLIGIR--LIASASGIIIPKIKAEGRVQMF	508
Nigella	391	TKRKPVASTINLALAGALYVFCSPDEARKEKMQAQCDFYLSLGGVSSSPVALSGLNPRPMSLVLHHEBVAIYVGRLLLPFPSPKRLWLIGIR--LIASASGIIIPKIKAEGRVQMF	507
*			
BbSQE-I	483	FWNYSNAKICSSLEGQYS-----ELDHDIAARGHACLHRA	517
BbSQE-II	494	CF-TCBPAPVMMRNRRLHQIAVSDPVIERNQRPRQAALVTVD	538
Arabidopsis-1	512	-----PATVPAYYKA-----PTVGETKCS	531
Arabidopsis-2	574	-----PRTIPAIYRAP-----P	585
Arabidopsis-3	506	-----PRTIPAIYRAP-----PTPSSSSPQ	525
Medicago-1	506	-----PATVPAYYRAP-----PDA	519
Medicago-2	511	-----PATVPAYYRAP-----PVNAF	526
Euphorbia	509	-----PATVPAIYRNE-----PVNGKSVEVPKS	531
Nigella	508	-----PATVPAYYRAA-----PVK	521

B

	Motif I	91	340	Motif II	370
Plant consensus	D-I-VGAG-AG-ALA-TLKG--RRV--IER			PGA-L-GDAFNMRHPLTGGGMTVAL-DI--L	
BbSQE-I	.L.I....VS.S...HSQ.LAL...LLL..			K.VIML..SL.....I.....M..N.TKL.	
BbSQE-II	.L.I....V..C...H.Q..DG...LIV..			...L.L.....G.VAL.	

Fig 2. Amino acid sequences of BbSQEs-I and -II aligned with those from the other organisms. A. The amino acid sequences of land plant SQEs that complemented *Saccharomyces cerevisiae erg1* and BbSQEs were aligned using CLUSTAL W (ver. 1.83) multiple sequence alignment tool (www.ebi.ac.uk/Tools/msa/clustalw2/help/faq.html, accessed Nov. 14, 2014) and adjusted manually. Amino acid residues that are 100% identical in the alignment are highlighted in black and those which are more than 50% identical are highlighted in grey. Boxes show conserved domains, hyphens denote the gaps in aligned sequences and asterisks indicate amino acid residues whose point mutations could result in the loss of complementation of *erg1* [26]. **B.** Sequences of motifs I and II in BbSQEs-I and -II aligned with plant consensus sequence. The top sequence shows the consensus among seven plant sequences from panel A. Numbers denote amino acid residue positions in AtSQE1. Hyphens indicate varieties in plant sequences. Asterisks are the same as in panel A. BbSQE sequences that are identical to the plant consensus are shown with dots.

doi:10.1371/journal.pone.0122649.g002

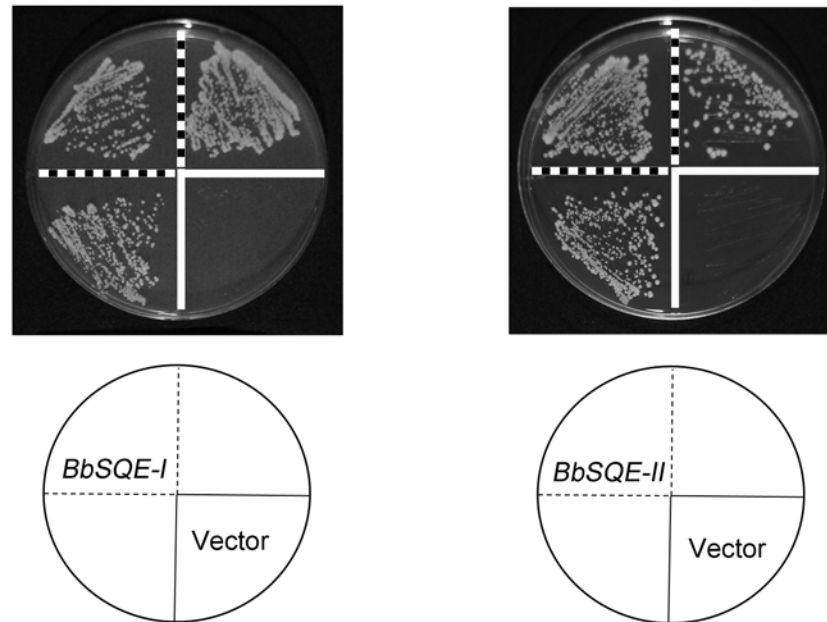


Fig 3. Complementation of KLN1 by *BbSQEs-I* and *-II*. The *BbSQE* cDNA clones were cloned into expression vector pWV3, and introduced into *Saccharomyces cerevisiae erg1* mutant, KLN1. Under anaerobic conditions, transformants were selected on leucine-deficient synthetic minimum medium plates which were supplemented with ergosterol and re-streaked twice more on fresh plates. Subsequently, three lines of SQE transformants were streaked on solidified YPD medium and incubated for four days under aerobic conditions, along with an empty vector control.

doi:10.1371/journal.pone.0122649.g003

observed in the empty vector control. When analyzing *BbSQE-II* transformants, the same result was obtained. These results show that *erg1* was complemented by either *BbSQE-I* or *-II*, and that both *BbSQEs-I* and *-II* served as functional squalene epoxidase gene in the yeast cells. Based on these results, the authors present the first report of the occurrence of multiple functional squalene epoxidase genes from algae. Since *B. braunii* gene for NADPH: cytochrome P-450 reductase, which is indispensable for the function of squalene 2,3-epoxidase, is yet to be cloned and functionally characterized, *in vitro* enzyme characterization, including kinetic studies and substrate specificity of squalene epoxidases shall be performed in the future studies.

Investigation and comparison of gene copy number

In order to determine the gene copy number of *BbSQEs*, Southern blot analyses were performed (Fig 4). Using a 325-bp *BbSQE-I* cDNA fragment as a probe, two fragments with sizes of 5.5 kb and 3.3 kb were detected in genomic DNA digested with PstI. Considering that the exon region, which hybridizes with this probe, is divided into two fragments after PstI digestion, Southern blot detection of the same number of PstI-digested genomic fragments (exons plus introns) using the same probe suggests that *BbSQE-I* is a single copy gene. Detection of a 12-kb EcoRI or an 11-kb HindIII fragment using the same probe was consistent with this interpretation. When a 1477-bp *BbSQE-II* cDNA probe was used, two PstI genomic fragments of 2.8-kb and 8.7-kb were detected. As with the *BbSQE-I* probe, the *BbSQE-II* cDNA probe fragment includes a single PstI and a single EcoRI site. Thus, the Southern blot analyses on genomic DNA digested with either of these two enzymes showed two fragments. Therefore *BbSQE-II* also appeared to be a single-copy gene.

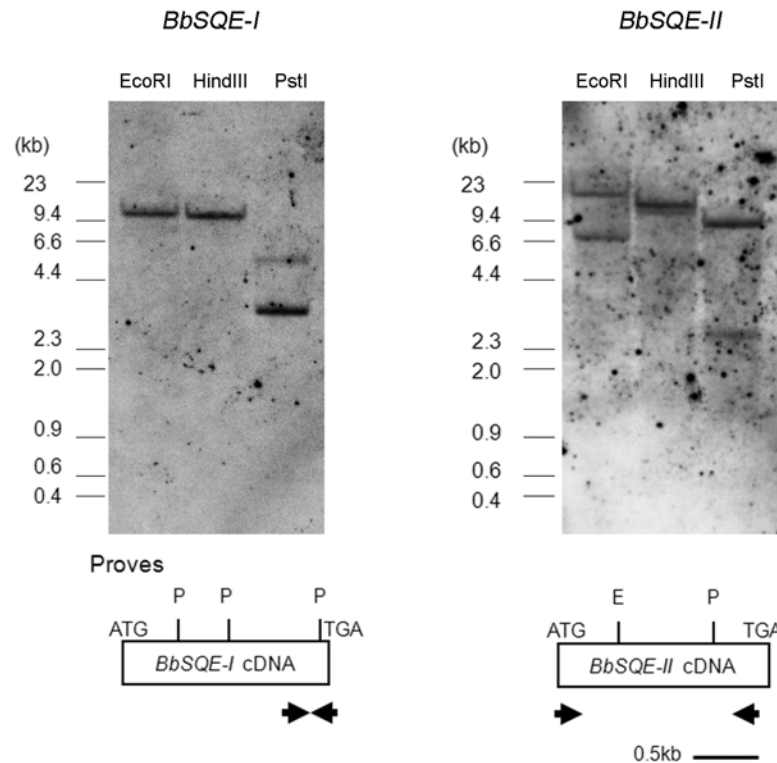


Fig 4. Southern blot analyses of *BbSQEs-I* and *-II* using genomic DNA. The cDNA fragments of 325-bp *BbSQE-I*, or 1477-bp *BbSQE-II* were labeled with digoxigenin, and used as probes for detecting corresponding genomic fragments. Upper panels show the Southern blots. After stripping probe of *BbSQE-I*, the same membrane was re-hybridized with that of *BbSQE-II*. The representative drawings at the bottom show positions of probe regions (arrows), as well as *PstI* and *EcoRI* sites (vertical bars with a letter) in the ORF (rectangles). Scale bar for cDNA length is indicated at the bottom.

doi:10.1371/journal.pone.0122649.g004

In the present study, the authors have cloned two *SQE* genes, and exhibited their functional complementation in the *Saccharomyces cerevisiae* *ERG1*-null mutant (Fig 3). Interestingly, this is the first report of the detection of plural *SQEs* in a green algal genome. According to BLAST searches on the NCBI database [27, 28] (<http://blast.st-va.ncbi.nlm.nih.gov/Blast.cgi>; accessed September 18, 2014), only a single *SQE* gene occurs in other green algae such as *Bathycoccus prasionos* RCC1105, *Micromonas pusilla* CCMP1545, *Micromonas pusilla* RCC299, *Ostreococcus lucimarinus* CCE9901, *Ostreococcus tauri* OTTH0595, *Coccomyxa subellipsoidea* C-169, and *Chlorella variabilis* NC64A. Similarly, a BLAST analyses on phytozome 10 (http://phytozome.jgi.doe.gov/pz/portal.html#!search?show=BLAST&method=Org_Creinhardtii; accessed September 18, 2014) revealed only a single locus assigned as a squalene epoxidase gene in either of the genomes of *Chlamydomonas reinhardtii* CC-505 Mt+ or *Volvox carteri f. nagariensis* Eve. As in many algal species, squalene epoxidase only occurs as a single copy gene in fungi [29], [30] and mammals [31], [32], [33]. The observed gene duplication of *BbSQE* in this study falls in line with previous reports of the occurrence of gene duplication in other genes involved in triterpene biosynthesis in *B. braunii* such as the gene for 1-deoxy-D-xylulose 5-phosphate synthase (*DXSs-I, -II* and *-III*) [13] and squalene synthase-homologues, *SS* [7] and *SSLs-1, -2, -3* [8]. Gene duplication of key enzymes in triterpene biosyntheses will be suited to supply larger amounts of precursors for liquid triterpene hydrocarbon production in the alga. Considering the possible merits of the duplication of *BbSQE*, we can point out a unique metabolic pathway in *B. braunii*, race B. In this organism, a certain amount of squalene is

Table 1. RNA-seq analysis of *BbSQEs-I* and *-II* at days 0 and 17 after inoculation into fresh culture medium.

Gene	FPKM ^a	
	Day 0 ^b	Day 17 ^c
<i>BbSQE-I</i>	7.30	5.33
<i>BbSQE-II</i>	7.59	10.21

^aFragments per kilobase of exon per million mapped sequence reads.

^bTotal number of aligned reads was 89,185,438.

^cTotal number of aligned reads was 57,605,684.

doi:10.1371/journal.pone.0122649.t001

methylated and secreted into its extracellular matrix as a component of hydrocarbon oils [3], [10], while a part of the squalene pool is metabolized into cell membrane sterols via squalene 2,3-epoxide as in the other eukaryotic organisms [34]. Throughout its evolutionary history, *B. braunii* might have acquired a new metabolic pathway to produce hydrocarbon oil through the duplication of genes, while retaining traditional pathways involved in cell division. Interestingly, the genome size for the B race of *B. braunii* is 166 Mb [35] and is mostly larger than those of other unicellular green algae examined so far, including Prasinophyceae, Chlorophyceae, and some of Trebouxiophyceae [36]. This observation is consistent with the duplication of genes which are involved in unique triterpene production in *B. braunii*.

Gene expression analysis during a culture period

In order to compare absolute expression levels between *BbSQEs-I* and *-II*, RNA-seq analysis was performed using the RNA from the cells collected immediately after inoculation into new medium (day 0) and 17 days after inoculation (day17) (Table 1). Expression levels of *BbSQEs-I* and *-II* transcripts (expressed as fragments per kilobase of exon per million mapped sequence reads—FPKM) at day 0 did not differ significantly. Observations for samples collected at day 17 show a slight down-regulation of *BbSQE-I* while *BbSQE-II* exhibited considerable up-regulation from day 0. Furthermore, expression levels of *BbSQE-II* at day17 were about two times higher than that of *BbSQE-I*. These results show that the transcript amount of *SQE-II* is more abundant than that of *BbSQE-I* in the middle of the algal culture cycle.

For more detailed analysis of *BbSQE* expression levels during a culture period, the authors further performed qRT-PCR analysis using RNA samples that were extracted from cells harvested at 6 day intervals after inoculation into new medium (Fig 5). Using primers specific for squalene epoxidases (*BbSQEs-I* and *II*) or glyceraldehyde 3-phosphate dehydrogenase (*BbGAPDH*), corresponding genes were amplified from cDNAs synthesized from RNA samples. Using *GAPDH* as a reference gene, relative transcript levels of *BbSQE-I* were almost constant throughout the culture period, with no changes greater than 35% of the initial levels at day 0. Relative amounts of *BbSQE-II* transcript were observed to increase considerably up until day 24 and the elevated transcript levels were maintained until the end of the culture period at day 42. The maximum relative transcript level of *BbSQE-II* was about 3.5-fold higher compared to that at day 0.

The qRT-PCR analysis of *SQEs* showed that relative transcript levels *BbSQE-I* were fairly constant while that of *SQE-II* increased as culture period proceeded. This expression pattern is distinct from those of the three genes of 1-deoxy-D-xylulose 5-phosphate synthase in *B. braunii* (*BbDXSs*) [13]. Relative transcript accumulation amounts of *BbDXSs-I*, *-II* and *-III* reach their maximum at an early stage of culture (day 6), and their levels go down from days 20 to

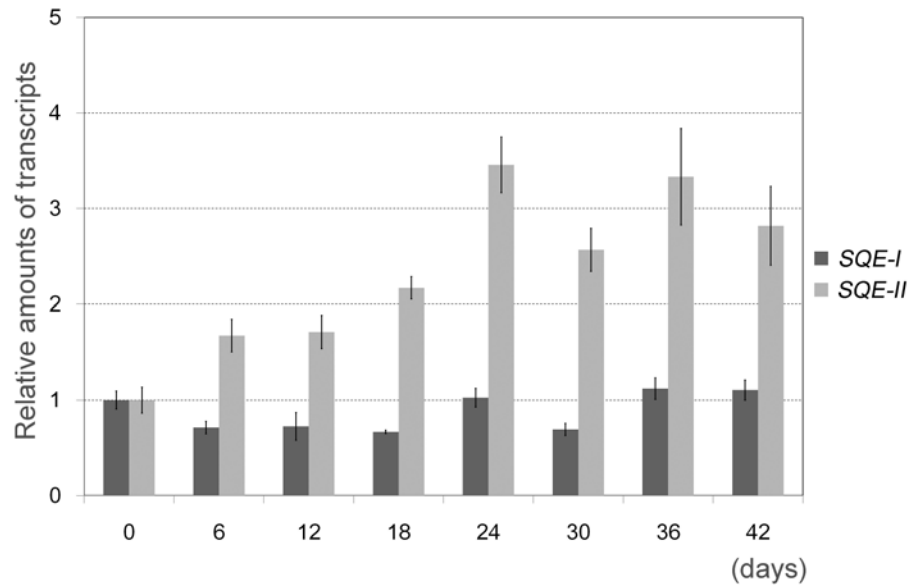


Fig 5. Expression of *BbSQEs-I* and *-II* during a culture period. *Botryococcus* culture was inoculated into fresh liquid medium and cultured for 42 days. Aliquots were harvested every 6 days and total RNA was extracted from each sample. Using qRT-PCR, relative amounts of *BbSQE-I* and *-II* transcripts were determined using that of *GAPDH* as a reference gene. The relative amounts at day 0 are shown as 1.0. Values are the mean of three technical replicates \pm S.D. in samples collected every 6 days of a representative algal culture.

doi:10.1371/journal.pone.0122649.g005

30. These observations suggest that enhanced expression of *BbSQE-II* occurs at latter stages of culture compared to the peaks of *BbDXSs-I*, *-II* and *-III*. A previous report indicated that botryococcene synthesis activity is highest at around day 6 [37] when the expression levels of *BbDXSs* reach their maximum. The results from this study suggest that the *BbSQE* gene expression in *B. braunii* might not be coupled with expression of *DXSs* given that *DXSs*, key enzymes in the MEP pathway [38], are involved in processes farther upstream from *SQEs*.

Conclusions

cDNA clones coding for two distinct squalene epoxidases, *BbSQEs-I* and *-II*, were isolated from the B race of *Botryococcus braunii*. The predicted amino acid sequence of *BbSQE-II* showed higher similarity to those of plant *SQEs* than that of *BbSQE-I*. Introduction of these genes into the *Saccharomyces cerevisiae erg1* deficient mutant restored its ergosterol auxotrophy. Gene expression of *BbSQE-I* was almost constant during a 42 day culture period, while that of *BbSQE-II* increased during the latter half of the culture period. From these results, the two *BbSQEs* therefore seem to have different physiological functions for either algal growth or triterpene hydrocarbon metabolism.

Supporting Information

S1 Table. Primers used in this study.
(XLSX)

Acknowledgments

The *Botryococcus braunii*, Showa EST data were kindly supplied by Prof. Joe Chappell at University of Kentucky, USA. The *Saccharomyces cerevisiae* *erg1* mutant KLN1 was donated from Prof. Friederike Turnowsky at Karl-Franzens-Universität, Austria. The authors appreciate Prof. Shuichi Nishikawa at Niigata University for valuable discussion, and Ms. Tomoka Oki and Mr. Hiromasa Nakamura at the University of Tokyo for technical assistance. The authors thank Prof. Hideya Fukuzawa at Kyoto University for discussion on Phytozome mining of *Chlamydomonas squalene* epoxidase gene.

Author Contributions

Conceived and designed the experiments: HU SO. Performed the experiments: HU. Analyzed the data: HU VF K. Sumimoto SO. Contributed reagents/materials/analysis tools: K. Sumimoto KI K. Saga KF SM SO. Wrote the paper: HU VF SM SO.

References

1. Metzger P, Berkaloff C, Casadevall E, Coute A. Alkadiene- and botryococcene-producing races of wild strains of *Botryococcus braunii*. *Phytochem.* 1985; 24: 2305–2312.
2. Metzger P, Casadevall E, Pouet MJ, Pouet Y. Structures of some botryococcenes: branched hydrocarbons from the B race of the green alga *Botryococcus braunii*. *Phytochem.* 1985; 24: 2995–3002.
3. Huang Z, Poulter CD. Tetramethylsqualene, a triterpene from *Botryococcus braunii* var. showa. *Phytochem.* 1989; 28: 1467–1470.
4. Metzger P, Allard B, Casadevall E, Berkaloff C, Couté A. Structure and chemistry of a new chemical race of *Botryococcus braunii* (Chlorophyceae) that produces lycopadiene, a tetraterpenoid hydrocarbon. *J Phycol.* 1990; 26: 258–266.
5. Hillen LW, Pollard G, Wake LV, White N. Hydrocracking of the oils of *Botryococcus braunii* to transport fuels. *Biotechnol Bioeng.* 1982; 24: 193–205. PMID: [18546110](#)
6. Poulter CD. Biosynthesis of non-head-to-tail terpenes. Formation of 1'-1 and 1'-3 linkages. *Acc Chem Res.* 1990; 23: 70–77.
7. Okada S, Devarenne TP, Chappell J. Molecular characterization of squalene synthase from the green microalga *Botryococcus braunii*, race B. *Arch Biochem Biophys.* 2000; 373: 307–317. PMID: [10620354](#)
8. Niehaus TD, Okada S, Devarenne TP, Watt DS, Sviripa V, Chappell J. Identification of unique mechanisms for triterpene biosynthesis in *Botryococcus braunii*. *Proc Natl Acad Sci USA.* 2011; 108: 12260–12265. doi: [10.1073/pnas.1106222108](#) PMID: [21746901](#)
9. Niehaus TD, Kinison S, Okada S, Yeo YS, Bell SA, Cui P, et al. Functional identification of triterpene methyltransferases from *Botryococcus braunii* race B. *J Biol Chem.* 2012; 287: 8163–8173. doi: [10.1074/jbc.M111.316059](#) PMID: [22241476](#)
10. Achitouv E, Metzger P, Rager MN, Largeau C. C₃₁–C₃₄ methylated squalenes from a Bolivian strain of *Botryococcus braunii*. *Phytochem.* 2004; 65: 3159–3165. PMID: [15541746](#)
11. Metzger P, Largeau C. Chemicals of *Botryococcus braunii*. In: Cohen Z, editor. *Chemicals from microalgae*. London: Taylor & Francis. 1999; pp. 205–260.
12. Nonomura AM. *Botryococcus braunii* var. showa (Chlorophyceae) from Berkeley, California, United States of America. *Jpn J Phycol.* 1988; 36: 285–291.
13. Matsushima D, Jenke-Kodama H, Sato Y, Fukunaga Y, Sumimoto K, Kuzuyama T, et al. The single cellular green microalga *Botryococcus braunii*, race B possesses three distinct 1-deoxy-D-xylulose 5-phosphate synthases. *Plant Sci.* 2012; 185–186: 309–320.
14. López-Gómez R, Gómez-Lin MA. A method for extracting intact RNA from fruits rich in polysaccharides using ripe mango mesocarp. *Hortsci.* 1992; 27: 440–442.
15. Suzuki H, Achnine L, Xu R, Matsuda SPT, Dixon RA. A genomics approach to the early stages of triterpene saponin biosynthesis in *Medicago truncatula*. *Plant J.* 2002; 32: 1033–1048. PMID: [12492844](#)
16. Landl KM, Klösch B, Turnowsky F. *ERG1*, encoding squalene epoxidase, is located on the right arm of chromosome VII of *Saccharomyces cerevisiae*. *Yeast.* 1996; 12: 609–613. PMID: [8771716](#)
17. Murray MG, Thompson WF. Rapid isolation of high molecular weight plant DNA. *Nucl Acids Res.* 1980; 8: 4321–4325. PMID: [7433111](#)

18. Uchida H, Yamashita H, Kajikawa M, Ohyama K, Nakayachi O, Sugiyama R, et al. Cloning and characterization of a squalene synthase gene from a petroleum plant, *Euphorbia tirucalli* L. *Planta*. 2009; 229:1243–1252. doi: [10.1007/s00425-009-0906-6](https://doi.org/10.1007/s00425-009-0906-6) PMID: [19283408](https://pubmed.ncbi.nlm.nih.gov/19283408/)
19. Grabherr MG, Haas BJ, Yassour M, Levin JZ, Thompson DA, Amit I, et al. Full-length transcriptome assembly from RNA-seq data without a reference genome. *Nature Biotechnol.* 2011; 29: 644–652. doi: [10.1038/nbt.1883](https://doi.org/10.1038/nbt.1883) PMID: [21572440](https://pubmed.ncbi.nlm.nih.gov/21572440/)
20. Langmead B, Trapnell C, Pop M, Salzberg SL. Ultrafast and memory-efficient alignment of short DNA sequences to the human genome. *Genome Biol.* 2009; 10: R25. doi: [10.1186/gb-2009-10-3-r25](https://doi.org/10.1186/gb-2009-10-3-r25) PMID: [19261174](https://pubmed.ncbi.nlm.nih.gov/19261174/)
21. Li B, Dewey CN. RSEM: accurate transcript quantification from RNA-seq data with or without a reference genome. *BMC Bioinformatics.* 2011; 12: 323. doi: [10.1186/1471-2105-12-323](https://doi.org/10.1186/1471-2105-12-323) PMID: [21816040](https://pubmed.ncbi.nlm.nih.gov/21816040/)
22. Milne I, Stephen G, Bayer M, Cock PJA, Pritchard L, Cardle L, et al. Using Tablet for visual exploration of second-generation sequencing data. *Brief Bioinf.* 2012; 14: 193–202.
23. Rasbery JM, Shan H, LeClair RJ, Norman M, Matsuda SPT, Bartel B. *Arabidopsis thaliana* squalene epoxidase 1 is essential for root and seed development. *J Biol Chem.* 2007; 282: 17002–17013. PMID: [17426032](https://pubmed.ncbi.nlm.nih.gov/17426032/)
24. Lipinski M, Scholz M, Pieper K, Fischer R, Prüfer D, Müller KJ. A squalene epoxidase from *Nigella sativa* participates in saponin biosynthesis and mediates terbinafine resistance in yeast. *Cent Eur J Biol.* 2009; 4: 163–169.
25. Uchida H, Sugiyama R, Nakayachi O, Takemura M, Ohyama K. Expression of the gene for sterol-biosynthesis enzyme squalene epoxidase in parenchyma cells of the oil plant, *Euphorbia tirucalli*. *Planta.* 2007; 226: 1109–1115. PMID: [17569082](https://pubmed.ncbi.nlm.nih.gov/17569082/)
26. Ruckenstein C, Eidenberger A, Lang S, Turnowsky F. Single amino acid exchanges in FAD-binding domains of squalene epoxidase of *Saccharomyces cerevisiae* lead to either loss of functionality or terbinafine sensitivity. *Biochem Soc Trans.* 2005; 33: 1197–1201. PMID: [16246080](https://pubmed.ncbi.nlm.nih.gov/16246080/)
27. Altschul SF, Gish W, Miller W, Myers EW, Lipman DJ. Basic local alignment search tool. *J Mol Biol.* 1990; 215:403–410. PMID: [2231712](https://pubmed.ncbi.nlm.nih.gov/2231712/)
28. Gish W, States DJ. Identification of protein coding regions by database similarity search. *Nature Genet.* 1993; 3:266–272. PMID: [8485583](https://pubmed.ncbi.nlm.nih.gov/8485583/)
29. Jandrositz A, Turnowsky F, Högenauer G. The gene encoding squalene epoxidase from *Saccharomyces cerevisiae*: cloning and characterization. *Gene.* 1991; 107: 155–160. PMID: [1743514](https://pubmed.ncbi.nlm.nih.gov/1743514/)
30. Favre B, Ryder NS. Cloning and expression of squalene epoxidase from the pathogenic yeast *Candida albicans*. *Gene.* 1997; 189: 119–126. PMID: [9161422](https://pubmed.ncbi.nlm.nih.gov/9161422/)
31. Kosuga K, Hata S, Osumi T, Sakakibara J, Ono T. Nucleotide sequence of a cDNA for mouse squalene epoxidase. *Biochim Biophys Acta.* 1995; 1260: 345–348. PMID: [7873613](https://pubmed.ncbi.nlm.nih.gov/7873613/)
32. Sakakibara J, Watanabe R, Kanai Y, Ono T. Molecular cloning and expression of rat squalene epoxidase. *J Biol Chem.* 1995; 270: 17–20. PMID: [7814369](https://pubmed.ncbi.nlm.nih.gov/7814369/)
33. Laden BP, Tang Y, Porter TD. Cloning, heterologous expression, and enzymological characterization of human squalene monooxygenase. *Arch Biochem Biophys.* 2000; 374: 381–388. PMID: [10666321](https://pubmed.ncbi.nlm.nih.gov/10666321/)
34. Hartmann MA. Plant sterols and the membrane environment. *Trends Plant Sci.* 1998; 3: 170–175.
35. Weiss TL, Johnston JS, Fujisawa K, Sumimoto K, Okada S, Chappell J, et al. Phylogenetic placement, genome size, and GC content of the liquid hydrocarbon-producing green microalga *Botryococcus braunii* strain Berkeley (Showa) (Chlorophyta). *J Phycol.* 2010; 46: 534–540. doi: [10.1016/j.bone.2009.09.028](https://doi.org/10.1016/j.bone.2009.09.028) PMID: [19786130](https://pubmed.ncbi.nlm.nih.gov/19786130/)
36. Kapraun DF. Nuclear DNA content estimates in green algal lineages: Chlorophyta and Streptophyta. *Ann Bot.* 2007; 99: 677–701. PMID: [17272304](https://pubmed.ncbi.nlm.nih.gov/17272304/)
37. Okada S, Devarenne TP, Murakami M, Abe H, Chappell J. Characterization of botryococcene synthase enzyme activity, a squalene synthase-like activity from the green microalga *Botryococcus braunii*, Race B. *Arch Biochem Biophys.* 2004; 422: 110–118. PMID: [14725863](https://pubmed.ncbi.nlm.nih.gov/14725863/)
38. Sato Y, Ito Y, Okada S, Murakami M, Abe H. Biosynthesis of the triterpenoids botryococcenes and tetramethylsqualene in the B race of *Botryococcus braunii* via the non-mevalonate pathway. *Tetrahedron Lett.* 2003; 44: 7035–7037.