

Joint Operator Pricing and Network Selection Game in Cognitive Radio Networks: Equilibrium, System Dynamics and Price of Anarchy

Jocelyne Elias, Université Paris Descartes, E-mail: jocelyne.elias@parisdescartes.fr
Fabio Martignon, Lin Chen, Université Paris-Sud, E-mail: {fabio.martignon, lin.chen}@lri.fr
Eitan Altman, INRIA Sophia Antipolis, France, E-mail: Eitan.Altman@sophia.inria.fr

Abstract—This paper addresses the joint pricing and network selection problem in cognitive radio networks. The problem is formulated as a Stackelberg game where first the Primary and Secondary operators set the network subscription price to maximize their revenue. Then, users perform the network selection process, deciding whether to pay more for a guaranteed service, or use a cheaper, best-effort secondary network, where congestion and low throughput may be experienced.

We derive optimal stable price and network selection settings. More specifically, we use the *Nash equilibrium* concept to characterize the equilibria for the price setting game. On the other hand, a *Wardrop equilibrium* is reached by users in the network selection game, since in our model a large number of users must determine individually the network they should connect to. Furthermore, we study network users' dynamics using a population game model, and we determine its convergence properties under replicator dynamics, a simple yet effective selection strategy.

Numerical results demonstrate that our game model captures the main factors behind cognitive network pricing and network selection, thus representing a promising framework for the design and understanding of cognitive radio systems.

Index Terms: - Cognitive Radio Networks, Pricing, Network Selection, Stackelberg Game, Population Game Model, Replicator Dynamics.

I. INTRODUCTION

Cognitive radio networks (CRNs), also referred to as xG networks, are envisioned to deliver high bandwidth to mobile users via heterogeneous wireless architectures and dynamic spectrum access techniques [1], [2]. In CRNs, a *Primary* (or licensed) User (PU) has a license to operate in a certain spectrum band; his access is generally controlled by the Primary Operator (PO) and should not be affected by the operations of any other unlicensed user. On the other hand, the Secondary Operator (SO) has no spectrum license; therefore, *Secondary* Users (SUs) must implement additional functionalities to share the licensed spectrum band without interfering with primary users.

In this work, we consider a cognitive radio scenario which consists of primary and secondary networks, as well as a large set of cognitive users, and we focus on a fundamental issue concerning such systems, i.e. whether it is better for a CR user to act as a primary user, paying the Primary operator for costlier, dedicated network resources with Quality of Service

guarantees, or act as a secondary user (paying the Secondary operator), sharing the spectrum holes left available by licensed users and facing lower costs with degraded performance guarantees. At the same time, we consider the *pricing* problem of both Primary and Secondary operators, who compete with each other, setting access prices to maximize their revenues.

The joint pricing and cognitive radio network selection problem is modeled as a *Stackelberg* (leader-follower) game, where first the Primary and Secondary operators set their access prices in order to maximize their revenues. In this regard, we study both practical cases where (1) the Primary and Secondary operators fix access prices at the same time, and (2) the Primary operator exploits his dominant position by playing first, anticipating the choices of the Secondary operator. Then, network users react to the prices set by the operators, choosing which network they should connect to, therefore acting either like primary or secondary users.

The solution provides an insight on how rational users will distribute among existing access solutions (higher-price primary networks vs. lower-price secondary networks), i.e., the proportion of players who choose different strategies.

We adopt a fluid queue approximation approach (as in [3], [4], [5], [6], [7]) to study the steady-state performance of these users, focusing on *delay* as QoS metric. Besides considering *static* traffic equilibrium settings, we further formulate the network selection process of cognitive radio users as a *population game* [8], which provides a powerful framework for characterizing the strategic interactions among large numbers of agents, whose behavior is modeled as a *dynamic* adjustment process. More specifically, we study the cognitive users' behavior according to *replicator dynamics* [8], [9], since such users adapt their choices and strategies based on the observed network state.

We provide equilibrium and convergence properties of the proposed game, and derive optimal stable price and network selection settings.

More specifically, we use the *Nash equilibrium* concept to characterize the equilibria of the pricing game between a finite number of decision makers (viz., the Primary and Secondary operators). In addition to that, we further determine the *Wardrop equilibrium* for the network selection game, in which a large number of users must choose individually the network they should connect to. Such equilibrium is characterized by two properties, namely *traffic equilibrium*

(the total costs perceived by users on all used networks are equal) and *system optimum principle* (the average delay/cost is minimum) [10].

Numerical results obtained in different network scenarios illustrate that our game captures the main factors behind cognitive network pricing and selection, thus representing a promising framework for the design and performance evaluation of cognitive radio systems.

In summary, in an effort to understand the pricing and networking selection issues that characterize CRNs, our work makes the following contributions:

- the proposition of a novel game theoretical model where Primary and Secondary operators set access prices, and users select which network to connect to, based both on the total delay and the experienced cost.
- The computation of equilibrium points for our game, as well as relevant performance metrics, including the Price of Anarchy and the Price of Stability.
- The analysis of a dynamic model, based on population games, which further illustrates how players converge to the equilibrium in a dynamic context under an easily implementable, distributed strategy (viz., replicator dynamics), along with formal, detailed proofs of its convergence.

The rest of this paper is organized as follows: related work is reviewed in Section II. The network model for the proposed joint pricing and network selection game is described in Section III; the equilibrium points of such game, as well as its Price of Anarchy and Price of Stability, are derived in Sections IV and V, respectively. The dynamic network selection model, based on population games and replicator dynamics, is presented in Section VI, and its convergence properties are demonstrated in Section VII. Numerical results are discussed in Section VIII, while Section IX concludes this work.

II. RELATED WORK

In this section, we first review the most notable works on spectrum pricing and access in cognitive radio networks [3], [4], [11], [12], [13], [14], [15], [16], [17], [18]. Then, we discuss relevant works that use evolutionary games to study the users behavior in CR as well as in heterogeneous wireless networks [19], [20], [21], [22], [23].

In [11], the authors provide a systematic overview on CR networking and communications, by looking at the key functions of the physical, MAC and network layers involved in a CR design, and by studying how these layers are crossly related. In [3], the authors consider the decision-making process of SUs who have the choice of either acquiring a dedicated spectrum (paying a price) or using the primary user band for free, and they characterize the resulting Nash equilibrium for the single-band case. This work differs from ours in two main aspects: 1) the CR users already arrive at the system as secondary or primary ones; SUs have the choice between dedicated or PU band, and 2) the users' behavior is studied based on queueing theory. The work in [4] considers a CRN where multiple secondary users (SUs) contend for

spectrum usage, using random access, over available primary user channels, focusing on SUs' queueing delay performance. A fluid queue approximation approach is adopted to study the steady-state delay performance of SUs. In [12], the authors analyze the price competition between PUs who can lease out their unused bandwidth to secondaries in exchange for a fee, considering bandwidth uncertainty and spatial reuse. The problem of dynamic spectrum leasing in a secondary market of CRNs is considered in [14], where secondary service providers lease spectrum from spectrum brokers to provide service to SUs.

Recent works have considered *evolutionary games* to study the users' behavior in cognitive radio and heterogeneous wireless networks [19], [20], [21], [22], [23].

In [19], the authors use evolutionary game theory to investigate the dynamics of user behavior in heterogeneous wireless access networks (i.e., WMANs, cellular networks, and WLANs). The evolutionary game solution is compared to the Nash equilibrium, and a set of algorithms (i.e., population evolution and reinforcement learning algorithms) are proposed to implement the evolutionary network selection game model. In [20], the dynamics of a multiple-seller, multiple-buyer spectrum trading market is modeled as an evolutionary game, in which PUs want to sell and SUs want to buy spectrum opportunities. Secondary users evolve over time, buying the spectrum opportunities that optimize their performance in terms of transmission rate and price. In [21], the authors propose a distributed framework for spectrum access, with and without complete network information (i.e., channel statistics and user selections). In the first case, an evolutionary game approach is proposed, in which each SU compares its payoff with the system average payoff to evolve its spectrum access decision over time. For the incomplete information case, a learning mechanism is proposed, in which each SU estimates its expected throughput locally and learns to adjust its channel selection strategy adaptively. The problem of opportunistic spectrum access in CSMA/CA-based cognitive radio networks is also addressed in [22] from an evolutionary game theoretic angle.

In our preliminary works [24], [25], we addressed the pricing and network selection problems in cognitive radio networks. However, in [24], we assumed that the PO and SO use *separate* frequency bands, which greatly simplifies the problem, and we did not study the impact of the order in which operators set prices on the quality of the reached equilibria. The work in [25] differs from the one presented here in that it considered uniquely Primary operators, and a finite set of SUs, which are characterized by elastic traffic demands that can be transmitted over one or multiple frequency spectra.

Unlike previous works, which study the interaction between two well-defined sets of users (primary and secondary ones) who *already* performed the choice of using the primary or the secondary network, our paper tackles a fundamental issue in CRNs. In fact, we model the users' decision process that occurs *before* such users enter the CRN, thus assessing the economic interest of deploying secondary (xG) networks. Such choice depends on the trade-off between *cost* and *performance guarantees* in such networks. At the same time, we derive

the optimal price setting for both Primary and Secondary operators that play before network users, in order to maximize their revenue. We use enhanced game theoretical tools, derived from population game theory, to model the network selection dynamics, providing convergence conditions and equilibrium settings.

III. NETWORK MODEL

We now detail the network model, which is illustrated in Figure 1: a cognitive radio wireless system which consists of a secondary (xG) network that coexists with a primary network at the same location and on the same spectrum band.

We consider an *overlay model* (focusing on the “interference avoidance” approach [26], [27] to cognitive radio) as in [3], [20], [28], where Secondary Users periodically sense the radio spectrum, intelligently detect occupancy in the different frequency bands and then opportunistically communicate over the spectrum holes left available by Primary Users, thus avoiding interference with active primary users. In other words, our model is an overlay CR where secondary users opportunistically access primary users’ spectrum only when it is not occupied. As in [3], we further consider perfect primary user detection at the secondary users and zero interference tolerance at each of the primary and secondary users.

We assume that users arrive at this system following a Poisson process with rate λ , and the maximum achievable transmission rate of the wireless channel (licensed to the PO and opportunistically used by the SO) is denoted by C . The total traffic λ admitted in the network must not exceed its capacity C ; this can be obtained, for example, using admission control techniques, which are out of the scope of this paper. All these assumptions are commonly adopted in several recent works like [4], [5], [6], [7].

Each arriving user must choose whether to join the primary network (paying a higher subscription cost) or the xG one (which has a lower subscription cost), based on criteria to be specified below, i.e., a combination of cost and QoS (service time/latency).

Finally, let us denote by λ_P the overall transmission rate of primary users (i.e., those who choose the primary network) and by λ_S the rate of secondary users, so that $\lambda = \lambda_P + \lambda_S$. Table I summarizes the basic notation used in our game model.

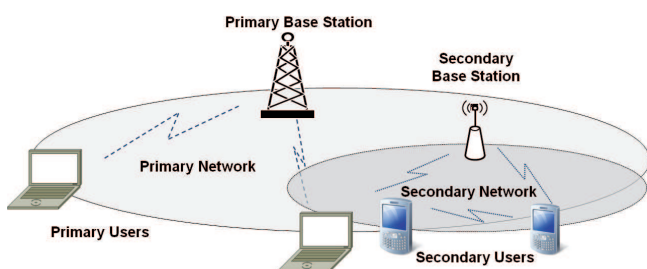


Fig. 1. CRN scenario with a primary network and a secondary (xG) network. Arriving users must decide whether to join the primary network, paying a subscription fee (p_1) for guaranteed QoS, or the xG network (which has a lower subscription cost, $p_2 < p_1$, and less performance guarantees), based on the expected cost and congestion levels.

TABLE I
BASIC NOTATION

λ	Total traffic accepted in the network
C	Wireless channel capacity
α	Weighting parameter of delay wrt access cost
λ_P	Total traffic transmitted by Primary Users
λ_S	Total traffic transmitted by Secondary Users
X_P	Fraction of Primary Users
X_S	Fraction of Secondary Users
p_1, p_2	Price charged by the PO/SO
K	Constant, velocity of convergence

We now define users’ *cost functions* as well as the *utility functions* of Primary and Secondary operators. We assume that the total cost incurred by a network user is a combination of the service time (delay, or latency) experienced in the network, and the cost for the player to access such network.

We underline that a similar model is used in [3], where the average cost incurred by a Secondary User (SU) consists of two components: (1) the price (\bar{C}) of the dedicated spectrum band, and (2) an average delay cost ($\frac{1}{\mu}$), where μ is the service time. The average delay cost is weighted by a parameter α , which represents the delay vs. monetary cost tradeoff of the SUs. To further support our choice, another similar model is considered by Anshelevich et al. in [29] for a different networking context. The authors set the player’s cost for using an edge e in the network as a combination of a cost function $c_e(x)$ and a latency function $d_e(x)$; the goal of each user in such game is to minimize the sum of his cost and latency. The same model is also used in [30]. Finally, note that in [19] the authors consider two components, namely throughput (the allocated capacity to a player, which is obviously related to the delay experienced by such user) and the corresponding price (see equations (2) and (3) in [19]).

In this work, we consider a fluid queue approximation approach, which permits to study the steady-state delay performance of both PUs and SUs. To this aim, and without loss of generality, we assume that the wireless channel is modeled as a M|M|1 queue, with service rate C and arrival rate λ . Recall that both the primary and secondary networks operate on the same channel; the Primary and Secondary operators fix the prices p_1 and p_2 , respectively, for accessing their services. Therefore, the total cost perceived by primary users is given by:

$$Cost_{PU} = \frac{\alpha}{C - \lambda_P} + p_1, \quad (1)$$

where parameter α weights the relative importance of the experienced delay with respect to the access cost. Note that primary users are affected *exclusively* by the traffic transmitted by primary users (λ_P), and not by the traffic of secondary users (λ_S), since usually, in a cognitive radio network, primary users have strict priority over secondary users; these latter must therefore implement spectrum sensing and spectrum handover strategies to avoid any interference towards primary users, and

can transmit only in the spectrum holes left unoccupied by these ones.

As mentioned previously, we consider perfect primary user detection at the secondary users and zero interference tolerance at each of the primary and secondary users.

For this reason, secondary users' performance is affected by the *whole traffic*, transmitted by both primary and secondary users; such users are characterized by the following cost function:

$$Cost_{SU} = \frac{\alpha}{C - (\lambda_P + \lambda_S)} + p_2 = \frac{\alpha}{C - \lambda} + p_2. \quad (2)$$

As for operators' utilities, they correspond to the total revenue obtained by pricing users. As a consequence, the Primary operator's utility function is expressed as follows:

$$U_P = p_1 \lambda_P. \quad (3)$$

Correspondingly, the Secondary operator's utility function is:

$$U_S = p_2 \lambda_S = p_2 (\lambda - \lambda_P). \quad (4)$$

To summarize, network users *minimize* the perceived cost, which is expressed as $Cost_{PU} = \frac{\alpha}{C - \lambda_P} + p_1$ (see equation (1)) if they choose the primary network, and $Cost_{SU} = \frac{\alpha}{C - \lambda} + p_2$ (see equation (2)) if they act as secondary users. As for Primary/Secondary operators, they try to *maximize* the total revenue obtained by pricing primary ($U_P = p_1 \lambda_P$) or secondary users ($U_S = p_2 \lambda_S$), respectively. Users' cost functions as well as operators' utilities are also reported in Tables II and III, respectively.

TABLE II
PRIMARY AND SECONDARY USER'S COST FUNCTIONS

Primary User (PU)	$Cost_{PU} = \frac{\alpha}{C - \lambda_P} + p_1$
Secondary User (SU)	$Cost_{SU} = \frac{\alpha}{C - \lambda} + p_2$

TABLE III
PRIMARY AND SECONDARY OPERATOR'S UTILITY FUNCTIONS

Primary Operator (PO)	$U_P = p_1 \lambda_P$
Secondary Operator (SO)	$U_S = p_2 \lambda_S$

IV. EQUILIBRIUM COMPUTATION

In this section, we derive the equilibrium points of our game, namely: (i) the equilibrium traffic sent by primary and secondary users, (ii) steady-state Primary/Secondary operator's utilities, as well as (iii) equilibrium prices set by the PO/SO.

We consider two practical cases: (1) both operators fix their access price *at the same time*, trying to maximize their own revenue (Section IV-A), and (2) the PO plays *before* the SO, anticipating the strategy of this latter, thus exploiting his dominant position (Section IV-B). We will refer to the first case as the *TOGETHER* scenario, while the latter will be referred to as the *BEFORE* scenario. Note that when the Primary and Secondary operators play at the same time, we have a Cournot

duopoly competition between such operators. However, in the original Cournot duopoly, production quantities (outputs) and prices are linear, while in this work we consider a nonlinear system which requires non-standard studies that cannot rely on existing results. On the other hand, when the Primary operator plays before the Secondary, anticipating his choices, we have a Stackelberg game model between the operators.

The *Nash* equilibrium concept will be used for the price setting game, since we have a finite number of decision makers, i.e., the two network operators. More precisely, a Nash Equilibrium is a set of players' (here, operators') strategies, each of which maximizes the player's revenue, and such that none of the actors has an incentive to deviate unilaterally. For this reason the corresponding network configurations are said to be stable.

On the other hand, a *Wardrop* equilibrium [31] is reached by CR users in the network selection game, since in our model a large number of users must determine individually the network they should connect to. Such equilibrium satisfies the two Wardrop's principles, namely traffic equilibrium (the total costs perceived by users on all used networks are equal) and system optimum principle (the average delay/cost is minimum).

Therefore, at Wardrop equilibrium, primary and secondary users will both experience the same cost, that is, $Cost_{PU} = Cost_{SU}$, or:

$$\frac{\alpha}{C - \lambda_P} + p_1 = \frac{\alpha}{C - (\lambda_P + \lambda_S)} + p_2 = \frac{\alpha}{C - \lambda} + p_2. \quad (5)$$

This permits to compute the equilibrium traffic¹ for the primary network as a function of the prices set by both the PO and SO:

$$\lambda_P = \frac{\alpha \lambda - C(C - \lambda)(p_1 - p_2)}{\alpha - (C - \lambda)(p_1 - p_2)}, \quad (6)$$

with $0 \leq \lambda_P \leq \lambda$. The traffic sent by secondary users, λ_S , will therefore be equal to $\lambda - \lambda_P$. Note that, in order for the equilibrium condition (5) to hold and for equilibrium traffic λ_P to be comprised in the $[0, \lambda]$ range, $p_1 - p_2$ must satisfy the condition $p_1 - p_2 < \frac{\alpha \lambda}{C(C - \lambda)}$. Furthermore, since there is a unique λ_P value which satisfies condition (5), such value represents the unique Wardrop equilibrium point of the network selection game.

The corresponding equilibrium utility for the PO is given by the following expression:

$$U_P = p_1 \lambda_P = p_1 \cdot \frac{\alpha \lambda - C(C - \lambda)(p_1 - p_2)}{\alpha - (C - \lambda)(p_1 - p_2)}, \quad (7)$$

while the utility of the SO will be:

$$\begin{aligned} U_S &= p_2 \lambda_S = p_2 (\lambda - \lambda_P) \\ &= p_2 \lambda + p_2 \left[\frac{\alpha(C - \lambda)}{\alpha - (C - \lambda)(p_1 - p_2)} - C \right]. \end{aligned} \quad (8)$$

¹With a slight abuse of notation, we will denote equilibrium flows still by λ_P and λ_S , since in the following we will almost exclusively refer to equilibrium game conditions.

Hereafter we compute equilibrium prices for both our considered scenarios.

A. The Primary and Secondary operators fix their prices simultaneously (TOGETHER scenario)

In this scenario, both the Primary and Secondary operators fix their prices simultaneously, trying to maximize their own revenue. As a consequence, to maximize the utility function of the PO, it suffices to take the derivative of U_P with respect to p_1 , imposing its equality to zero:

$$\frac{\partial U_P}{\partial p_1} = C - \frac{\alpha(C - \lambda)[\alpha - (C - \lambda)(p_1 - p_2)] + \alpha(C - \lambda)^2 p_1}{[\alpha - (C - \lambda)(p_1 - p_2)]^2} = 0 \quad (9)$$

Hence, we can express the price p_1 as a function of p_2 :

$$p_1 = p_2 + \frac{\alpha}{C - \lambda} \left\{ 1 - \sqrt{\frac{(C - \lambda)}{\alpha C} [\alpha + (C - \lambda)p_2]} \right\}. \quad (10)$$

Similarly, the Secondary operator aims at maximizing his revenue U_S ; by deriving U_S with respect to p_2 and imposing its equality to zero, we obtain:

$$\frac{\partial U_S}{\partial p_2} = (\lambda - C) + \frac{\alpha^2(C - \lambda) - \alpha(C - \lambda)^2 p_1}{[\alpha - (C - \lambda)(p_1 - p_2)]^2} = 0, \quad (11)$$

and the expression of p_2 as a function of p_1 is given by:

$$p_2 = p_1 - \frac{1}{(C - \lambda)} \left\{ \alpha - \sqrt{\alpha^2 - \alpha(C - \lambda)p_1} \right\}. \quad (12)$$

Finally, combining expressions (10) and (12) we obtain the equilibrium price values p_1 and p_2 , which are function of α , C and λ :

$$p_1 = \alpha \frac{(3C^2 - \lambda^2) - (C - \lambda)^2 \sqrt{\frac{9C - 5\lambda}{C - \lambda}}}{2(2C - \lambda)^2(C - \lambda)} \quad (13)$$

$$p_2 = \alpha \frac{C\sqrt{9C - 5\lambda} - (3C - 2\lambda)\sqrt{C - \lambda}}{2(2C - \lambda)^2\sqrt{C - \lambda}}, \quad (14)$$

with $p_1 \geq 0$ and $p_2 \geq 0$.

B. The Primary operator plays before the Secondary (BEFORE scenario)

In this case, we have a Stackelberg game between operators, in which the Primary operator is the leader while the Secondary operator is the follower.

The PO will therefore anticipate the choice of the SO (who will set the price p_2 in order to maximize his utility), and will play his best strategy, setting the optimal value for p_1 taking into account the choice on p_2 operated by the SO.

To derive the equilibrium prices in such scenario, it suffices to take the derivative of U_S with respect to the price p_2 , obtaining p_2 in function of p_1 (see equation (12)). We next insert the expression of p_2 in (7), obtaining U_P as a function of p_1 :

$$U_P = p_1 \left\{ C + \frac{\alpha(\lambda - C)}{\sqrt{\alpha^2 - \alpha(C - \lambda)p_1}} \right\}.$$

Deriving U_P with respect to the price p_1 , we obtain $C + \frac{\sqrt{\alpha(\lambda - C)[2\alpha - (C - \lambda)p_1]}{2[\alpha - (C - \lambda)p_1]^{3/2}}$; then, imposing that such derivative is null, we obtain the equilibrium value for p_1 , which has the following expression:

$$p_1 = \frac{\alpha}{C - \lambda} \left\{ 1 - \left(Z + \frac{h}{3} \right)^2 \right\}, \quad (15)$$

where $Z = \left(\frac{h}{4}\right)^{1/3} \left[\left(\sqrt{1 + \frac{4}{27}h^2} + 1 \right)^{2/3} + \left(\sqrt{1 + \frac{4}{27}h^2} - 1 \right)^{2/3} \right]$, and $h = \frac{C - \lambda}{2C}$.

If we combine such expression of p_1 with (12), we obtain the equilibrium price set by the Secondary operator:

$$p_2 = \frac{\alpha}{C - \lambda} \left(Z + \frac{h}{3} \right) \left[1 - \left(Z + \frac{h}{3} \right) \right]. \quad (16)$$

C. Comments

Note that, in both the *TOGETHER* and *BEFORE* scenarios, equilibrium prices are unique. In fact, if we compute the second derivatives in both network scenarios ($\frac{\partial^2 U_P}{\partial p_1^2}$ and $\frac{\partial^2 U_S}{\partial p_2^2}$), they are both negative for all price values in the feasible region $p_1 - p_2 < \frac{\alpha\lambda}{C(C - \lambda)}$. Hence, the maximums, as well as the Nash equilibrium points, are unique.

Furthermore, equilibrium prices (p_1 and p_2) are directly proportional to α , while equilibrium flows (λ_P and λ_S) are independent of α ; this can be seen by substituting, in expression (6), $p_1 - p_2$, which is proportional to α . As a consequence, operators' utilities grow proportionally to α . All these trends will be illustrated in more detail in the Numerical Results section.

Finally, primary users' equilibrium traffic, λ_P , decreases with increasing C values, while secondary users' traffic follows an opposite trend. As for operators' prices and utilities, they both decrease with C , as we will quantify in Section VIII.

V. PRICE OF ANARCHY AND PRICE OF STABILITY

We now investigate the efficiency of the equilibria reached by operators and users in our joint pricing and network selection game, through the determination of the Price of Anarchy (PoA) and the Price of Stability (PoS). They both quantify the loss of efficiency as the ratio between the cost of a specific stable outcome/equilibrium and the cost of the optimal outcome, which could be designed by a central authority. In particular the PoA, first introduced in [32], considers the worst stable outcome (that with the highest cost), while the PoS [29] considers the best stable equilibrium (that with the lowest cost). However, we observe that in our game these two performance metrics coincide due to the uniqueness of the equilibrium reached by network users. For this reason, in the following we will refer exclusively to the first performance figure, the PoA, which has a particular importance in characterizing the efficiency of distributed game formulations.

To determine the optimal system-wide solution, we define the social welfare S as the weighted average of the delays experienced by primary and secondary users; S is therefore a function of the amount x of traffic sent by primary users:

$$S(x) = \frac{\alpha x}{C-x} + \frac{\alpha(\lambda-x)}{C-\lambda}.$$

Note that p_1 and p_2 do not appear in the social welfare's expression, since all the prices paid by primary/secondary users (which represent for them a *disutility* or *cost*) correspond to a symmetric *utility* or *gain* for the Primary/Secondary operators, who collect this income in exchange for the network services they offer.

To minimize this quantity, it suffices to derive with respect to x and impose its equality to zero, thus obtaining:

$$\frac{dS(x)}{dx} = \frac{\alpha C}{(C-x)^2} - \frac{\alpha}{C-\lambda} = 0,$$

which leads to $x_{min} = C - \sqrt{C(C-\lambda)}$.

The optimal social welfare is therefore equal to:

$$\begin{aligned} S(x_{min}) &= \alpha \left[\frac{C - \sqrt{C(C-\lambda)}}{\sqrt{C(C-\lambda)}} + \frac{\lambda - C + \sqrt{C(C-\lambda)}}{C-\lambda} \right] \\ &= 2\alpha \left[\sqrt{\frac{C}{C-\lambda}} - 1 \right]. \end{aligned} \quad (17)$$

Recall that the total traffic transmitted by primary users at the Wardrop equilibrium is given by expression (6), and the equilibrium traffic for secondary users is $\lambda_s = \lambda - \lambda_p$.

The (average) total delay experienced by primary/secondary users at equilibrium is therefore equal to:

$$TD_E = \alpha \frac{\lambda_p}{C-\lambda_p} + \alpha \frac{\lambda_s}{C-\lambda}, \quad (18)$$

while the Price of Anarchy (PoA) is defined as the ratio between the cost of the worst (here, the unique) equilibrium and the social optimum, $PoA = \frac{TD_E}{S(x_{min})}$.

Hereafter, we derive the closed-form expressions for the PoA in both the considered scenarios (i.e., the *TOGETHER* and *BEFORE* scenarios). To this aim, it is sufficient to use equilibrium expressions for λ_P and λ_S in both scenarios.

A. PoA for the *TOGETHER* scenario (the *PO* and *SO* play together)

The total delay of cognitive users at equilibrium (TD_E^T) can be expressed as follows:

$$\begin{aligned} TD_E^T &= \alpha \frac{\lambda_p}{C-\lambda_p} + \alpha \frac{\lambda_s}{C-\lambda} = \frac{\alpha\lambda}{C-\lambda} - (p_1 - p_2)\lambda_p \\ &= \frac{\alpha C(9C-5\lambda) - \alpha(3C-2\lambda)\sqrt{(C-\lambda)(9C-5\lambda)}}{(2C-\lambda)[(C-\lambda) + \sqrt{(C-\lambda)(9C-5\lambda)}}. \end{aligned} \quad (19)$$

Therefore, the Price of Anarchy can be calculated as:

$$\begin{aligned} PoA_T &= \frac{TD_E^T}{S(x_{min})} \\ &= \frac{C(9C-5\lambda)\sqrt{C-\lambda} - (3C-2\lambda)(C-\lambda)\sqrt{9C-5\lambda}}{2(2C-\lambda)[(C-\lambda) + \sqrt{(C-\lambda)(9C-5\lambda)}][\sqrt{C-\lambda} - \sqrt{C-\lambda}]} \end{aligned} \quad (20)$$

B. PoA for the *BEFORE* scenario (the *PO* plays before the *SO*)

In this case, the total delay of cognitive users at equilibrium (TD_E^B) can be expressed as:

$$\begin{aligned} TD_E^B &= \alpha \frac{\lambda_p}{C-\lambda_p} + \alpha \frac{\lambda_s}{C-\lambda} = \frac{\alpha\lambda}{C-\lambda} - (p_1 - p_2)\lambda_p \\ &= \alpha \left[-2 + \frac{C}{C-\lambda} \left(Z + \frac{h}{3} \right) + \frac{1}{Z + \frac{h}{3}} \right], \end{aligned} \quad (21)$$

where

$$Z = \left(\frac{h}{4} \right)^{1/3} \left[\left(\sqrt{1 + \frac{4}{27}h^2} + 1 \right)^{2/3} + \left(\sqrt{1 + \frac{4}{27}h^2} - 1 \right)^{2/3} \right],$$

and $h = \frac{C-\lambda}{2C}$.

The Price of Anarchy is therefore equal to:

$$\begin{aligned} PoA_B &= \frac{TD_E^B}{S(x_{min})} \\ &= \frac{\sqrt{C-\lambda}}{2(\sqrt{C-\lambda} - \sqrt{C})} \left[-2 + \frac{C}{C-\lambda} \left(Z + \frac{h}{3} \right) + \frac{1}{Z + \frac{h}{3}} \right]. \end{aligned} \quad (22)$$

Note that both expressions (20) and (22) are independent of α .

VI. COGNITIVE USERS' BEHAVIOR: REPLICATOR DYNAMICS

After having characterized the *static*, steady-state equilibria reached by network operators and users in the joint pricing and spectrum selection game, in this section we further focus on modeling the *dynamic* behavior of network users.

To this aim, we use population dynamics (and, in particular, *replicator dynamics*) to model the behavior of users who decide which network they should connect to, since such dynamics models network users who adapt their choices and strategies based on the observed state of the system (in terms of costs and congestion, in our case).

Before introducing replicator dynamics for our network selection game, we must first define some relevant game theoretic concepts.

A. Introduction to Population Games and Replicator Dynamics

Hereafter we briefly introduce population games and replicator dynamics; for more details, the reader is referred to the book by W. H. Sandholm [8].

1) *Population Games*: A population game G , with Q non-atomic classes of players (i.e., network users) is defined by a mass and a strategy set for each class, and a payoff function for each strategy. By a non-atomic population, we mean that the contribution of each member of the population is very small; this is the case in our game, where a large set of users compete for CRN's bandwidth resources. We denote the set of classes by $\mathcal{Q} = \{1, \dots, Q\}$, where $Q \geq 1$. The class q has mass m^q . Let S^q be the set of strategies available for players of class q , where $S^q = \{1, \dots, s^q\}$. These strategies can be thought

of as the actions that members of q could possibly take (i.e., connecting to the primary or the secondary network).

During the game play, each player of class q selects a strategy from S^q . The mass of players of class q that choose the strategy $n \in S^q$ is denoted by x_n^q , where $\sum_{n \in S^q} x_n^q = m^q$. We denote the vector of strategy distributions being used by the entire population by $x = \{x^1, \dots, x^Q\}$, where $x^i = \{x_1^i, \dots, x_{s_i}^i\}$. The vector x can be thought of as the state of the system.

The marginal payoff function (per mass unit) of players of class q who play strategy n when the state of the system is x is denoted by $F_n^q(x)$, usually referred to as *fitness* in evolutionary game theory, which is assumed to be continuous and differentiable. The total payoff of the players of class q is therefore $\sum_{n \in S^q} F_n^q(x)x_n^q$.

2) *Replicator Dynamics*: The replicator dynamics describes the behavior of a large population of agents who are randomly matched to play normal form games. It was first introduced in biology by Taylor and Jonker [33] to model the evolution of species, and it is also used in the economics field. Recently, such dynamics has been applied to many networking problems, like routing and resource allocation [34], [35].

Given x_n^q , which represents the proportion of players of class q that choose strategy n , as illustrated before, the replicator dynamics can be expressed as follows:

$$\dot{x}_n^q = x_n^q \left[F_n^q(x) - \frac{1}{m^q} \sum_{n \in S^q} F_n^q(x)x_n^q \right], \quad (23)$$

where \dot{x}_n^q represents the derivative of x_n^q with respect to time.

In fact, the ratio \dot{x}_n^q/x_n^q measures the evolutionary success (the rate of increase) of a strategy n . This ratio can be also expressed as the difference in fitness $F_n^q(x)$ of the strategy n and the average fitness $\frac{1}{m^q} \sum_{n \in S^q} F_n^q(x)x_n^q$ of the class q .

An important concept in population games and replicator dynamics is *Wardrop equilibrium* [31], which we introduced in Section IV. In this context, a state \hat{x} is a Wardrop equilibrium if for any class $q \in \mathcal{Q}$, all strategies being used by the members of q yield the same marginal payoff to each member of q , whereas the marginal payoff that would be obtained by members of q is lower for all strategies not used by class q .

B. Cognitive Users' Behavior in the Network Selection Game: Replicator Dynamics

Having reviewed the mathematical tools we will rely on, we now focus on the cognitive radio scenario illustrated in Section III, introducing replicator dynamics for the network selection game. In particular, we consider a population game G with a non-atomic set of players ($q = 1$), which is defined by a *strategy set* denoted by $\mathcal{S} = \{s_p, s_s\}$, identical for all players, and a *payoff function* for each strategy; s_p means that the player chooses the *primary* network, and s_s that the player chooses the *secondary* network, using the spectrum holes left free by primary users.

Our goal is to determine the dynamic network selection settings (X_P and $X_S = 1 - X_P$), i.e., the fraction of players that choose the primary and secondary network, respectively, based on the equilibrium prices set by Primary and Secondary

operators. Hence, the total traffic accepted in the primary network is equal to $\lambda_P = \lambda X_P$, and the one accepted in the secondary network is $\lambda_S = \lambda X_S$.

The proposed replicator dynamics provides a means to analyze how players can “learn” about their environment, and converge towards an equilibrium choice. Replicator dynamics is also useful to investigate the speed of convergence of strategy adaptation to reach a stable solution in the game. A mathematical analysis to bound such speed is provided in Section VII. In this case, CR users need to know some information, viz. the total cost (the service delay plus the price charged by the PO/SO, respectively) and the size of the populations (X_P, X_S) that already performed such selection, before undertaking the best choice based on the system state.

As illustrated in Section III, the goal of each cognitive radio user is to *minimize* a weighted sum of his delay (latency) and price paid to the network operator (either primary or secondary), α being the parameter which permits to give more weight to delay with respect to the paid price. Hence, we can formalize the network selection game as follows:

$$\begin{aligned} \dot{X}_P &= K X_P \left[\frac{-\alpha}{C - \lambda X_P} - p_1 - \right. \\ &\quad \left. - \left(\frac{-\alpha X_P}{C - \lambda X_P} - X_P \cdot p_1 - (1 - X_P) \left(\frac{\alpha}{C - \lambda} + p_2 \right) \right) \right] = \\ &= K X_P (1 - X_P) \left[-p_1 + p_2 + \frac{\alpha}{C - \lambda} - \frac{\alpha}{C - \lambda X_P} \right], \end{aligned} \quad (24)$$

where \dot{X}_P represents the derivative of X_P with respect to time.

This equation has the same structure as the replicator dynamics (see equation (23)): the first term ($F_n^q(x) \equiv \frac{-\alpha}{C - \lambda X_P} - p_1$) corresponds to the total cost (the service delay plus the price charged by the PO) perceived by users that choose to connect to the primary network, using a M|M|1 approximation; the second term ($\frac{1}{m^q} \sum_{n \in S^q} F_n^q(x)x_n^q \equiv \frac{-\alpha X_P}{C - \lambda X_P} - X_P \cdot p_1 - (1 - X_P) \left(\frac{\alpha}{C - \lambda} + p_2 \right)$) represents the average cost/delay incurred by the fraction X_P of primary users as well as by the fraction X_S of secondary users (recall that p_1 and p_2 are the prices charged by the Primary and Secondary operator, respectively).

In particular, the speed of variation of X_P is proportional to the population size X_P (via the proportionality coefficient K), which models the willingness of the population to change strategy.

A similar equation can be written for Secondary Users, thus we can express the replicator dynamics for such SUs as follows:

$$\dot{X}_S = K X_S (1 - X_S) \left[p_1 - p_2 - \frac{\alpha}{C - \lambda} + \frac{\alpha}{(C - \lambda) + \lambda X_S} \right]. \quad (25)$$

Obviously, by comparing these two expressions it can be verified that condition $X_P + X_S = 1$ holds.

It can be demonstrated [8] that Wardrop equilibria are the stationary points of equations (24) and (25). As we will show in the next section, it can be easily proved that the unique

non-trivial fixed point of such dynamics coincides with the Wardrop equilibrium point of the CR users' network selection game already determined in Section IV.

VII. CONVERGENCE ANALYSIS OF REPLICATOR DYNAMICS

This section provides an in-depth analysis on the replicator dynamics given by (24)². To this end, we rewrite it in a discretized version as follows:

$$X_P(t+1) = X_P(t) + kX_P(t)[1 - X_P(t)] \left[A - \frac{1}{B - X_P(t)} \right], \quad (26)$$

where $k = K\alpha/\lambda$, $A = \lambda(-p_1/\alpha + p_2/\alpha + \frac{1}{C-\lambda})$ and $B = C/\lambda$.

The above dynamics has three fixed points, among which 0 and 1 are *trivial* fixed points corresponding to the case where all users either act as secondary or primary users, respectively. $X_P^* = B - 1/A$ is the only non-trivial fixed point, which is also the Wardrop equilibrium of the game; its expression is equal to $X_P^* = \frac{\lambda_P}{\lambda}$, where λ_P is the equilibrium flow already derived for the static game in Section IV (see expression (6)).

In the subsequent analysis, we investigate the convergence of the replicator dynamics to X_P^* . We start by establishing the following auxiliary lemma.

Lemma 1. *Under the condition that $K(A - \frac{1}{B-1}) \leq 1$, it holds that*

- $X_P(t+1)$ is non-decreasing w.r.t. $X_P(t)$ for $X_P(t) \in [0, X_P^*)$ and non-increasing w.r.t. $X_P(t)$ for $X_P(t) \in (X_P^*, 1]$;
- $X_P(t+1) > X_P(t)$, $\forall X_P(t) < X_P^*$ and $X_P(t+1) < X_P(t)$, $\forall X_P(t) > X_P^*$.

Proof. The proof of the first part is straightforward by checking the derivative $\partial X_P(t+1)/\partial X_P(t)$. Specifically, it can be checked that under the condition that $K(A - \frac{1}{B-1}) \leq 1$, $\partial X_P(t+1)/\partial X_P(t) > 0$ when $X_P(t) \in [0, X_P^*)$ and $\partial X_P(t+1)/\partial X_P(t) < 0$ when $X_P(t) \in (X_P^*, 1]$. The second part follows readily from (26). \square

The following theorem establishes the convergence of the replicator dynamics to the non-trivial fixed point X_P^* .

Theorem 1. *Under the condition that $K(A - \frac{1}{B-1}) \leq 1$, the replicator dynamics depicted in (26) converges to the non-trivial fixed point X_P^* for any initial state $0 < X_P(0) < 1$.*

Proof. Consider an arbitrary sequence of update steps commencing from an initial vector $X_P(0)$. We distinguish the following two cases:

- *Case 1:* $0 < X_P(0) \leq X_P^*$. In this case (recall that X_P^* is a fixed point of (26)), it follows from Lemma 1 that: (1) $X_P(t) \leq X_P^*$, $\forall t$ and (2) $X_P(0) \leq X_P(1) \leq \dots \leq X_P(t-1) \leq X_P(t) \leq \dots$, i.e., $X_P(t)$ is a non-decreasing sequence. Since $X_P(t)$ is also bounded by X_P^* , it follows that it must converge to a limit. Since there

is no fixed point other than X_P^* in the range $(0, X_P^*)$, this limit must be X_P^* .

- *Case 2:* $X_P^* < X_P(0) < 1$. This case can be proved in a similar manner. In fact (recall that X_P^* is a fixed point of (26)), it follows from Lemma 1 that: (1) $X_P(t) > X_P^*$, $\forall t$ and (2) $X_P(0) \geq X_P(1) \geq \dots \geq X_P(t-1) \geq X_P(t) \geq \dots$, i.e., $X_P(t)$ is a non-increasing sequence. Since $X_P(t)$ is also bounded by X_P^* , it follows that it must converge to a limit. Since there is no fixed point other than X_P^* in the range $[X_P^*, 1)$, this limit must be X_P^* .

Combining the above analysis, the replicator dynamics is ensured to converge to the non-trivial fixed point X_P^* for any initial state $0 < X_P(0) < 1$. \square

The above theorem essentially illustrates that with a conservative strategy (i.e., small K), the replicator dynamics is ensured to converge to the Wardrop equilibrium.

Remark. The above theorem establishes the sufficient condition for the convergence of the replicator dynamics to the unique non-trivial fixed point, which is also the Wardrop equilibrium. It follows straightforwardly that under the same condition, the equilibrium is also stable in that any deviated point from it will be dragged back under the replicator dynamics. In fact, X_P^* is an evolutionary stable equilibrium. Meantime, it follows from the theorem that the two trivial fixed points 0 and 1 are not stable, in the sense that any deviation from them will drag the system to X_P^* .

It is also worth pointing out that Theorem 1 provides only a *sufficient* condition for the convergence and may be too stringent in some cases.

We further investigate the stability and the convergence speed of the replicator dynamics in the following theorem, following the guidelines of [36].

Theorem 2. *Under the condition that $K(A - \frac{1}{B-1}) < 1$, the non-trivial fixed point X_P^* is exponentially stable under the replicator dynamics depicted in (26), i.e., there exists $0 \leq k' < 1$ such that $|X(t) - X_P^*| \leq (k')^t |X(0) - X_P^*|$.*

Proof. We show that the replicator dynamics $X_P(t) \rightarrow X_P(t+1)$ in (26) is a contraction.

The contraction is defined as follows: let (X, d) be a metric space, $f: X \rightarrow X$ is a contraction if there exists a constant $k' \in [0, 1)$ such that $\forall x, y \in X$, $d(f(x), f(y)) \leq k'd(x, y)$, where $d(x, y) = \|x - y\| = \max_i |x_i - y_i|$.

To that end, note that:

$$d(f(x), f(y)) = \|f(x) - f(y)\| \leq \left\| \frac{\partial f}{\partial x} \right\| \|x - y\| = \left\| \frac{\partial f}{\partial x} \right\| d(x, y).$$

If the Jacobian $\left\| \frac{\partial f}{\partial x} \right\| \leq k'$, then f is a contraction.

By some algebraic operations, we can bound the Jacobian as

$$\|J\|_\infty = \max_{X_P(t) \in (0, 1)} \left| \frac{\partial X_P(t+1)}{\partial X_P(t)} \right| \leq 1 - K(A - \frac{1}{B-1}).$$

Hence, since the condition $K(A - \frac{1}{B-1}) < 1$ holds, i.e., $\|J\|_\infty \leq k' \triangleq 1 - K(A - \frac{1}{B-1}) < 1$, X_P^* is exponentially stable where k' is the exponential convergence speed. \square

²Note that the same analysis can be conducted for (25).

VIII. NUMERICAL RESULTS

In this section, we analyze and discuss the numerical results obtained from solving our joint pricing and spectrum access game model in different cognitive radio scenarios. More in detail, we measure the sensitivity of the operators' utilities and prices, as well as users' equilibrium flows and costs, to different parameters like the total traffic λ accepted in the network and the channel capacity C .

Before doing so, let us first consider an example of a primary operator utility function (U_P). Figure 2 shows this latter as a function of the price p_1 set by the Primary Operator (the price p_2 has been fixed to the Nash equilibrium value), with $\alpha = 1$, $C = 100$ and $\lambda = 10$. By simply deriving and using the second order derivative test, it can be proved that the PO's revenue has a global maximum, as illustrated in the figure, since for small p_1 values the incoming primary traffic is priced too low, resulting in a low PO revenue, while for high p_1 values few users choose the primary network, thus diminishing its profitability.

A. Effect of the traffic accepted in the network (λ)

We first consider a CRN scenario with maximum channel capacity $C = 100$ and total accepted traffic λ varying in the $[0, 100]$ range. The parameter α , which expresses the relative importance of the experienced delay with respect to the access cost, is set to 1, unless otherwise stated.

Figures 3(a) and 3(b) show the prices set at the Nash equilibrium by the Primary (p_1) and the Secondary operator (p_2), respectively, in the two considered scenarios (the PO and SO play *TOGETHER*, the PO plays *BEFORE* the SO, anticipating the choices of this latter). The difference between the prices set by the operators in these two scenarios can be better appreciated in Figures 4(a) and 4(b) for the PO and SO, respectively. All numerical results illustrated in Figures 3 and 4 are summarized in Table IV.

It can be observed (Figure 4(a)) that in the *BEFORE* scenario, the PO sets a higher price than in the *TOGETHER* scenario, until the network is overloaded ($\lambda \leq 80$); above this threshold, the price set by the PO in the former scenario is lower than in the latter. As for the price set by the Secondary

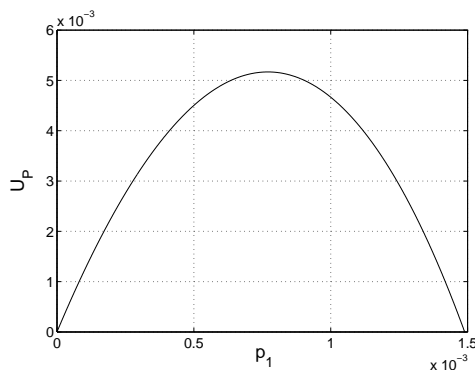


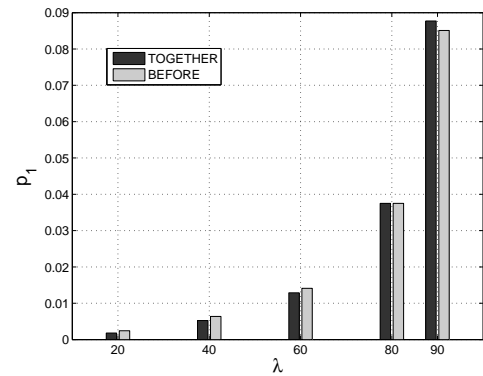
Fig. 2. Primary Operator's utility (U_P) as a function of the imposed price p_1 in the *TOGETHER* scenario. Price p_2 has been fixed to the Nash equilibrium value.

operator (Figure 4(b)), it is always higher in the *BEFORE* than in the *TOGETHER* scenario, and such difference increases consistently for increasing λ values. This is the reason why the PO in the *BEFORE* scenario can lower his price while still attracting the large majority of network users, as we will show in the following.

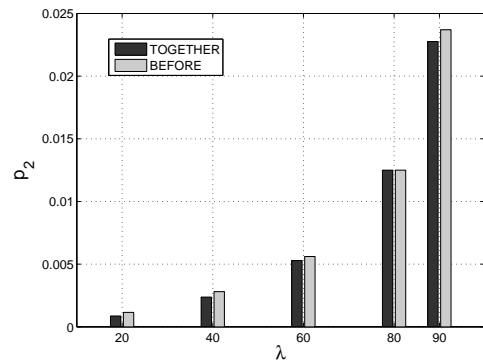
The corresponding equilibrium traffic sent by primary (λ_P) and secondary users (λ_S) is illustrated in Figures 5(a) and 5(b) as a function of λ , for both the considered scenarios.

We can observe that:

- The traffic accepted (and consequently, the overall fraction of users) in the primary network, λ_P , always increases with the offered traffic, until finally, when $\lambda \rightarrow C$, all users choose the primary network. This is due to the superior attractiveness of such network (in terms of the delay experienced by users) with respect to the secondary one, since resources are licensed to primary users and SUs always observe a higher delay than PUs.
- Furthermore, concerning λ_P , in the *BEFORE* scenario the PO admits (slightly) less traffic than the SO, when $\lambda < 80\%$ of the total capacity C (Figure 5(a)); this is due to the fact that the equilibrium price p_1 set by the PO in such scenario is higher than in the *TOGETHER* case (see Figure 4(a)), which in turn makes λ_P decrease. In the high traffic regime, the PO increasingly attracts more



(a)

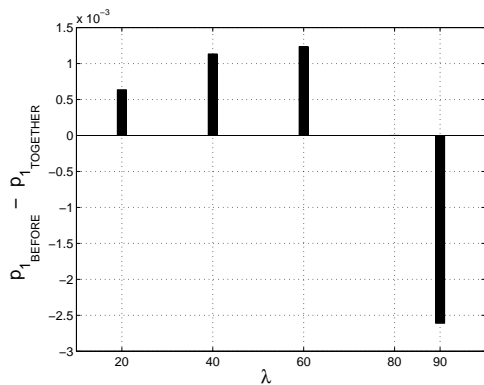


(b)

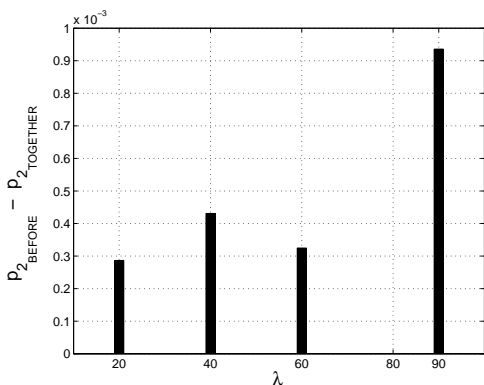
Fig. 3. (a) Equilibrium price p_1 set by the Primary operator and (b) Equilibrium price p_2 set by the Secondary operator, as a function of the total traffic λ offered to the network for both the *BEFORE* and *TOGETHER* scenarios.

TABLE IV
EQUILIBRIUM PRICES p_1 AND p_2 SET BY THE PO/SO (AS WELL AS THEIR DIFFERENCE), FOR DIFFERENT VALUES OF THE TOTAL TRAFFIC λ OFFERED TO THE NETWORK FOR BOTH the *BEFORE* AND *TOGETHER* SCENARIOS.

λ	$p_{1\text{TOGETHER}} \times 10^{-3}$	$p_{1\text{BEFORE}} \times 10^{-3}$	$p_{2\text{TOGETHER}} \times 10^{-3}$	$p_{2\text{BEFORE}} \times 10^{-3}$	$\Delta p_1 \times 10^{-3}$	$\Delta p_2 \times 10^{-3}$
20	1.806	2.441	0.868	1.154	0.635	0.286
40	5.242	6.375	2.374	2.805	1.133	0.431
60	12.885	14.122	5.288	5.613	1.237	0.325
80	37.5	37.5	12.5	12.5	0	0
90	87.724	85.112	22.761	23.697	- 2.612	0.936



(a)



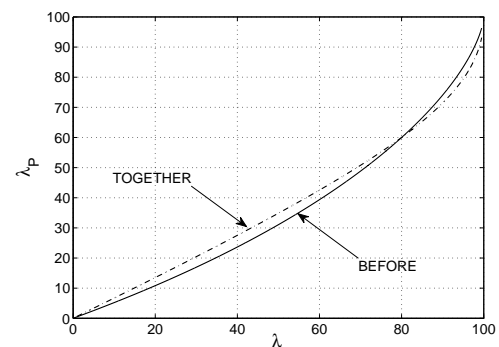
(b)

Fig. 4. (a) Difference in the equilibrium prices p_1 set by the Primary operator in the *TOGETHER* and *BEFORE* scenarios, and (b) difference in the equilibrium prices p_2 set by the Secondary operator in the same scenarios.

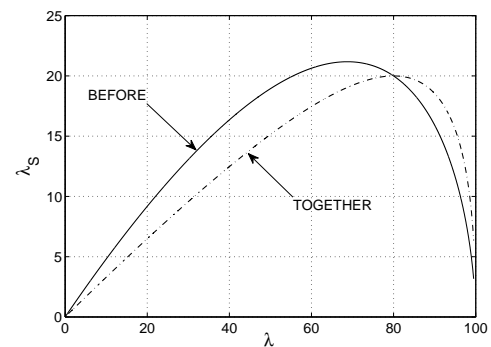
traffic due to the significantly lower delay experienced in the primary network, while the SO increases p_2 in an effort to increase his utility in spite of the customer rush towards the primary network (more specifically, fewer clients choose the SO, who reacts by raising his access price p_2 in order to increase his revenue, reaction which in turn accentuates this phenomenon).

- Concerning λ_S , its derivative with respect to λ is always decreasing: it is increasingly less attractive to be a secondary user than a primary one, since for increasing λ values the delay tends to dominate in the total cost perceived by the user.

We now focus our analysis on operators' utility, which we recall is defined as the product of the price set by the operator and the total flow transmitted by users that choose



(a)



(b)

Fig. 5. Equilibrium traffic sent by primary (λ_P) and secondary users (λ_S) as a function of the total traffic, λ , accepted in the network, for both the *TOGETHER* and *BEFORE* scenarios.

such operator. Figures 6(a) and 6(b) show, respectively, the difference in utilities for the Primary (ΔU_P) and Secondary operator (ΔU_S) in the *TOGETHER* and *BEFORE* scenarios.

It can be observed that it is increasingly more convenient for the PO to be a leader, anticipating the SO, and this is reflected in the utility, which consistently grows for increasing λ values. At the same time, for low and medium λ values ($\lambda < 0.8C$), even the SO obtains a higher utility in the *BEFORE* scenario. This means that in such scenario, both operators achieve an economic advantage at the expense of the total price paid by cognitive radio users.

B. Effect of the channel capacity (C)

We now consider a variation of this network scenario, doubling the channel capacity C to 200; the total traffic admitted in the primary network is illustrated in Figure 7. The trend is the same as already shown in Figure 5(a), and

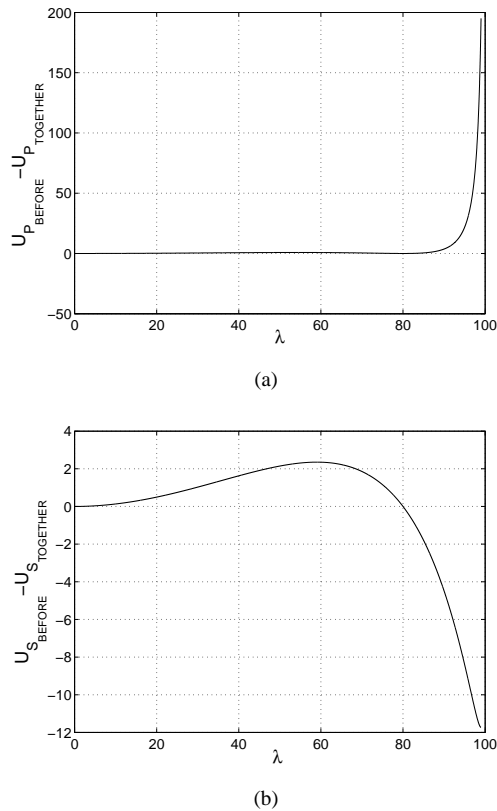


Fig. 6. (a) Difference in utilities U_P of the Primary operator when he plays *BEFORE* and *TOGETHER* with the SO. (b) Difference in utilities U_S of the secondary operator in the same scenarios.

a similar behavior can be observed for the secondary traffic, which is not reported for the sake of brevity.

On the other hand, Figure 8 shows the equilibrium traffic sent by primary users as a function of the wireless channel capacity C , with λ fixed to 100. It can be observed that λ_P tends to $\frac{\lambda}{2}$ ($= 50$ in this case) in the *BEFORE* scenario, and to $\frac{2\lambda}{3}$ (≈ 66.6) in the *TOGETHER* scenario³. This behavior is

³It suffices to compute the limit for $C \rightarrow \infty$ of λ_P in expression (6), substituting the equilibrium values p_1, p_2 for both the considered scenarios. Note that such limit is independent of α .

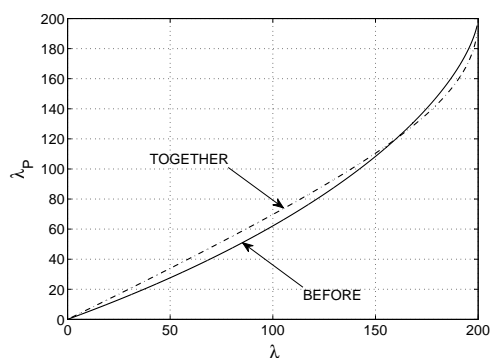


Fig. 7. Equilibrium traffic sent by primary users (λ_P) as a function of the total traffic, λ , accepted in the network, for both the *TOGETHER* and *BEFORE* scenarios. The total channel capacity is $C = 200$.

in line with what already observed in Figure 7, since when λ is consistently lower than C , the Primary operator who plays before the SO (*BEFORE* scenario) tends to admit less traffic than this latter.

We further illustrate in Figure 9 the chosen price as well as the utility perceived by the Primary operator, in both the considered scenarios, for increasing values of the channel capacity C and a total accepted traffic λ fixed to 100 (note that the prices p_1 set by the PO, illustrated in Figure 9(a), almost overlap in the two considered scenarios). A similar trend can be observed for both the price and utility of the Secondary operator (see Figure 10).

In summary, as the available capacity increases, operators fix increasingly lower prices, achieving a lower total revenue.

The impact of C on the Price of Anarchy is further investigated in the following subsection VIII-C.

C. Efficiency of the reached equilibria: Price of Anarchy (PoA)

We now measure the efficiency of the equilibria reached by the system. The Price of Anarchy (PoA), which in our game coincides with the Price of Stability due to the uniqueness of the equilibria reached by operators and users, is illustrated in Figure 11 for both the *TOGETHER* (PoA_T) and *BEFORE* scenarios (PoA_B).

When both operators play together, the PoA is equal to 1 for both extreme cases ($\lambda = 0$ and $\lambda = C$). Furthermore, it has a maximum equal to 1.0127 for $\frac{\lambda}{C} = \frac{2}{3}$, which means that, in such scenario, the equilibrium reached by the system is only $\approx 1.3\%$ worse (in terms of the overall experienced delay) with respect to the socially optimal solution. In the *BEFORE* scenario, the PoA is also low, but the trend exhibited by such performance figure differs from the previous scenario, since the PoA tends to infinity for λ approaching the channel capacity C . This is due to the fact that the total cost for users at equilibrium increases significantly faster than the social welfare, especially for high λ values.

As a consequence, such situation should be avoided by market controllers either 1) by controlling the admitted traffic λ , imposing that it does not exceed a predefined fraction of the available channel capacity, or 2) by preventing the *BEFORE*

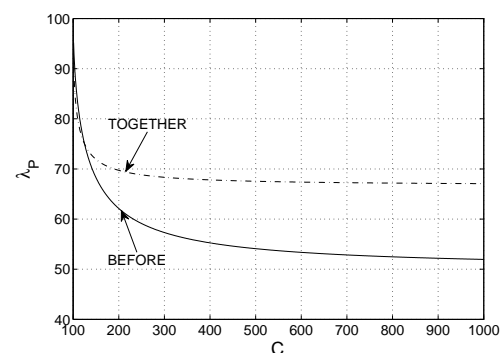
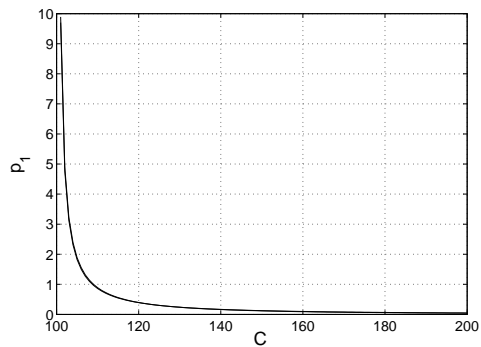
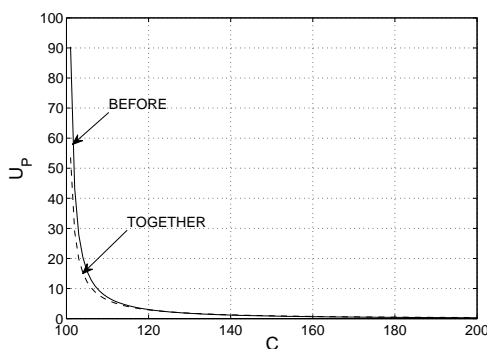


Fig. 8. Equilibrium traffic sent by primary users (λ_P) as a function of the channel capacity C for both the *TOGETHER* and *BEFORE* scenarios. The total traffic offered to the network, λ , is fixed and equal to 100.

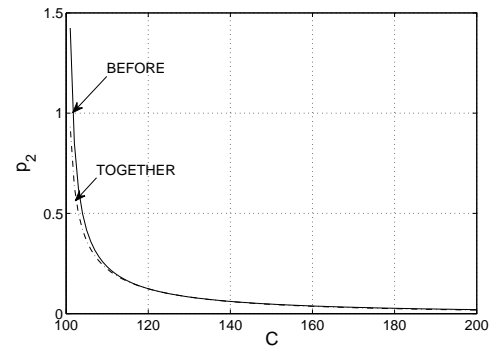


(a)

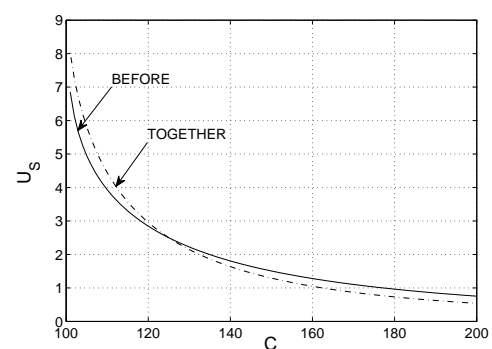


(b)

Fig. 9. (a) Primary operator's price p_1 and (b) utility U_P as a function of the channel capacity C for both the *TOGETHER* and *BEFORE* scenarios. The total traffic offered to the network, λ , is fixed and equal to 100. Note that prices p_1 practically overlap in the two considered scenarios.



(a)



(b)

Fig. 10. (a) Secondary operator's price p_2 and (b) utility U_S as a function of the channel capacity C for both the *TOGETHER* and *BEFORE* scenarios. The total traffic offered to the network, λ , is fixed and equal to 100.

scenario to occur, imposing antitrust policies to limit dominant position abuse.

Figure 12 further reports the PoA as a function of the channel capacity C for both the considered scenarios; λ is fixed and equal to 100. It is not surprising that both curves decrease rapidly with C , since, as already observed in Figure 11, when λ is consistently lower than C , the $PoA \rightarrow 1$ in both scenarios.

In summary, we can conclude that, apart from the limiting case illustrated before for very high traffic loads, the quality of the reached equilibria is indeed excellent: when the system is loaded at less than 95%, which is a reasonable operating region, the PoA is always less than 1.1, which means a loss of efficiency of 10% with respect to the social optimum. The system hence converges to a stable state which is globally very efficient.

D. Replicator Dynamics for the Network Selection Game

We now analyze the convergence of the proposed replicator dynamics, fixing $\lambda = 30$ and $C = 100$. Figure 13 illustrates such convergence (expressed in steps needed in the replicator dynamics) of network users to a stationary solution, for different values of the parameter K in equation (24), namely 1, 5 and 10. More specifically, the figure reports the fraction X_P of users that choose the primary network. We consider

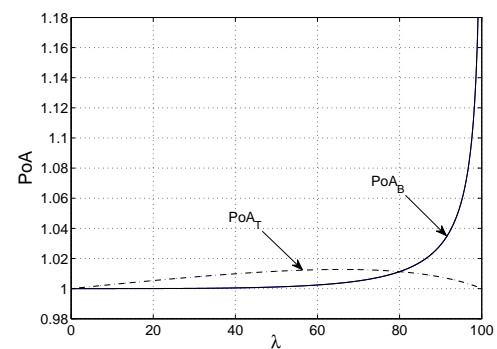


Fig. 11. The Price of Anarchy as a function of the total traffic offered to the network, λ , in both the *TOGETHER* (PoA_T) and *BEFORE* (PoA_B) scenarios.

both cases where the initial fraction of such users is close to zero (Figure 13(a)) and one (Figure 13(b)).

Note that the speed of convergence to the unique stable equilibrium point of the dynamics ($X_P^* \approx 0.68$, in such scenario) increases for increasing K values. Furthermore, when p_1 and p_2 are equilibrium price values, we observe that the convergence conditions demonstrated in Theorems 1 and 2 for our proposed replicator dynamics (see the previous section) are always satisfied.

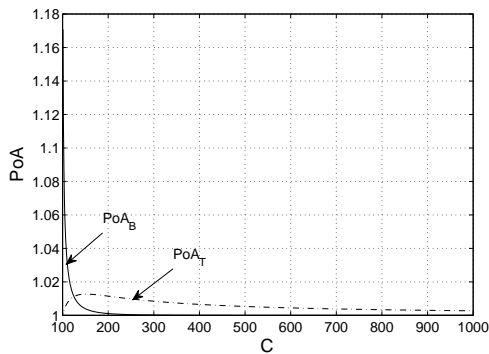


Fig. 12. The Price of Anarchy as a function of the channel capacity C for both the *TOGETHER* (PoA_T) and *BEFORE* (PoA_B) scenarios. The total traffic offered to the network, λ , is fixed and equal to 100.

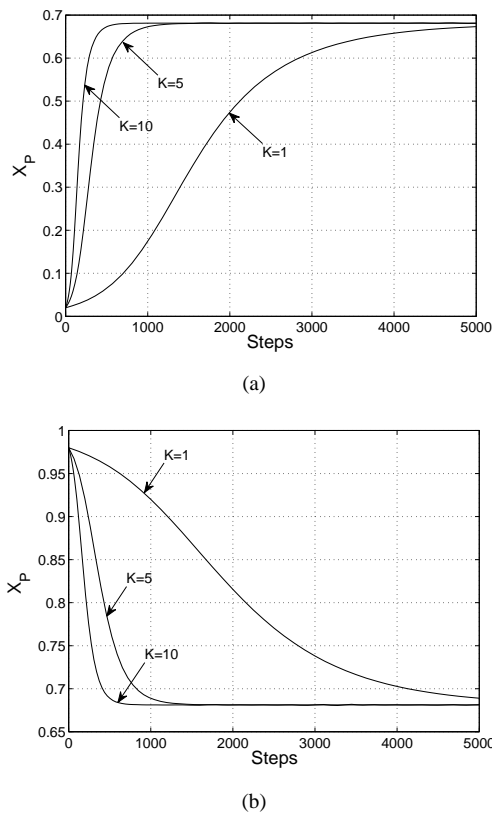


Fig. 13. Convergence of Primary Users to the stationary point ($X_P^* \approx 0.68$). The initial point is (a) *lower* or (b) *higher* than the equilibrium.

IX. CONCLUSION

In this paper, we tackled a fundamental problem related to Cognitive Radio Networks, i.e., the joint pricing and Primary/Secondary network selection process. More specifically, we considered a CRN scenario which is composed of primary/secondary networks and a set of Cognitive Radio users who must decide whether to subscribe to the primary network for guaranteed bandwidth or to access the secondary network, paying a lower price at the expense of possible service degradation (in terms of experienced delay and congestion). At the same time, we studied the pricing game

between the Primary and Secondary operators, considering two practical cases where such operators fix their access price simultaneously, and where the PO anticipates the SO strategy, exploiting his dominant position.

We computed optimal, stable pricing values and network selection settings; furthermore, we studied network users' dynamics using a population game model, and we determined its convergence properties under replicator dynamics. Numerical results demonstrate that our game model captures the main factors behind cognitive network pricing and access network selection, thus representing a promising framework for the design and understanding of cognitive radio systems.

A key finding of the present study is that the advantage for the PO to play before the SO can be significant, especially in a high traffic regime; this has an adverse impact on customers' choices, since in such situation the equilibria reached by cognitive radio users drift away from the social optimum, and the Price of Anarchy tends to infinity. It is therefore important (e.g., for government, regulation authorities), to implement actions that prevent or limit such dominant position abuse, if possible.

Apart from this limiting case, which occurs exclusively for very high traffic regimes, we observe that the quality of the reached equilibria is excellent: when the system is loaded at less than 95%, which seems a reasonable operating region, the PoA is always less than 1.1 (regardless of the order in which operators fix their price), which means a loss of efficiency of 10% with respect to the social optimum. Hence, the system is guaranteed to converge to a stable state which is very efficient from a social point of view.

ACKNOWLEDGMENTS

This work was partially supported by ANR in the framework of the ANR Green-Dyspan project.

REFERENCES

- [1] I.F. Akyildiz, W.Y. Lee, M.C. Vuran, and S. Mohanty. A survey on spectrum management in cognitive radio networks. *IEEE Comm. Magazine*, pages 40–48, vol. 46, no. 4, April 2008.
- [2] J. Elias, F. Martignon, A. Capone, and E. Altman. Non-cooperative spectrum access in cognitive radio networks: a game theoretical model. *Elsevier Computer Networks*, pages 3832–3846, vol. 55, no. 17, December 2011.
- [3] K. Jagannathan, I. Menache, E. Modiano, and G. Zussman. Non-cooperative spectrum access—the dedicated vs. free spectrum choice. *IEEE J. Sel. Areas Commun.*, 30(11):2251–2261, December 2012.
- [4] S. Wang, J. Zhang, and L. Tong. Delay Analysis for Cognitive Radio Networks with Random Access: A Fluid Queue View. In *Proc. of IEEE Infocom 2010*, San Diego, CA, USA, March 2010.
- [5] Q. Zhao, L. Tong, A. Swami, and Y. Chen. Decentralized cognitive MAC for opportunistic spectrum access in ad hoc networks: A POMDP framework. *IEEE J. Sel. Areas Commun.*, 25(3):589–600, 2007.
- [6] X. Li, Q. Zhao, X. Guan, and L. Tong. On the performance of cognitive access with periodic spectrum sensing. In *Proceedings of the ACM workshop on Cognitive radio networks*, pages 31–36, Beijing, China, September 20–25, 2009.
- [7] O. Habachi and Y. Hayel. Optimal opportunistic sensing in cognitive radio networks. *IET Commun.*, 6(8):797–804, 2012.
- [8] W. H. Sandholm. *Population Games and Evolutionary Dynamics*. MIT press, January 2011.
- [9] T.L. Vincent and J.S. Brown. *Evolutionary game theory, natural selection, and Darwinian dynamics*. Cambridge University Press, 2005.
- [10] E. Altman, T. Boulogne, R. El-Azouzi, T. Jimenez, and L. Wynter. A survey on networking games in telecommunications. *Elsevier Computers & Operations Research*, 33(2):286–311, 2006.

- [11] Y.C. Liang, K.C. Chen, G.Y. Li, and P. Mahonen. Cognitive radio networking and communications: An overview. *IEEE Transactions on Vehicular Technology*, 60(7):3386–3407, 2011.
- [12] G.S. Kasbekar and S. Sarkar. Spectrum pricing games with spatial reuse in cognitive radio networks. *IEEE J. Sel. Areas Commun.*, 30(1):153–164, 2012.
- [13] D. Xu, X. Liu, and Z. Han. Decentralized bargain: A two-tier market for efficient and flexible dynamic spectrum access. *IEEE Transactions on Mobile Computing*, June 2012.
- [14] K. Zhu, D. Niyato, P. Wang, and Z. Han. Dynamic spectrum leasing and service selection in spectrum secondary market of cognitive radio networks. *IEEE Transactions on Wireless Communications*, 11(3):1136–1145, 2012.
- [15] R. Xie, F. R. Yu, and H. Ji. Dynamic resource allocation for heterogeneous services in cognitive radio networks with imperfect channel sensing. *IEEE Trans. Veh. Technol.*, 61(2):770–780, 2012.
- [16] T. Elkourdi and O. Simeone. Spectrum leasing via cooperation with multiple primary users. *IEEE Trans. Veh. Technol.*, 61(2):820–825, 2012.
- [17] Y. Li, S. K. Jayaweera, M. Bkassiny, and K. A. Avery. Optimal myopic sensing and dynamic spectrum access in cognitive radio networks with low-complexity implementations. *IEEE Trans. on Wireless Commun.*, 11(7):2412–2423, 2012.
- [18] W. Saad, Z. Han, H.V. Poor, T. Basar, and J.B. Song. A cooperative bayesian nonparametric framework for primary user activity monitoring in cognitive radio networks. *IEEE J. Sel. Areas Commun.*, 30(9):1815–1822, 2012.
- [19] D. Niyato and E. Hossain. Dynamics of network selection in heterogeneous wireless networks: an evolutionary game approach. *IEEE Trans. Veh. Technol.*, pages 2008–2017, vol. 58, no. 4, 2009.
- [20] D. Niyato, E. Hossain, and Z. Han. Dynamics of Multiple-Seller and Multiple-Buyer Spectrum Trading in Cognitive Radio Networks: A Game-Theoretic Modeling Approach. *IEEE Trans. Mobile Comput.*, pages 1009–1022, vol. 8, no. 8, 2009.
- [21] X. Chen and J. Huang. Evolutionarily stable spectrum access. *IEEE Transactions on Mobile Computing*, April 2012.
- [22] S. Iellamo, L. Chen, and M. Coupechoux. Imitation-based spectrum access policy for csma/ca-based cognitive radio networks. In *Proc. of IEEE WCNC*, Paris, France, April 2012.
- [23] X. Chen and J. Huang. Spatial spectrum access game: Nash equilibria and distributed learning. In *Proc. of MobiHoc*, pages 205–214, Hilton Head Island, South Carolina, USA, June 2012.
- [24] J. Elias, F. Martignon, and E. Altman. Joint Pricing and Cognitive Radio Network Selection: a Game Theoretical Approach. In *Proc. of WiOpt 2012*, Paderborn, Germany, May 2012.
- [25] J. Elias and F. Martignon. Joint Spectrum Access and Pricing in Cognitive Radio Networks with Elastic Traffic. In *Proc. of IEEE International Conference on Communications, ICC'10*, Cape Town, South Africa, May, 2010.
- [26] S. Jafar and S. Srinivasa. Capacity limits of cognitive radio with distributed and dynamic spectral activity. *IEEE J. Sel. Areas Commun.*, 25(3):529–537, 2007.
- [27] S. Srinivasa and S. Jafar. Cognitive radios for dynamic spectrum access: the throughput potential of cognitive radio: A theoretical perspective. *IEEE Comm. Magazine*, 45(5):73–79, 2007.
- [28] S. Srinivasa and S. Jafar. How much spectrum sharing is optimal in cognitive radio networks? *IEEE Transactions on Wireless Communications*, 7(10):4010–4018, 2008.
- [29] E. Anshelevich, A. Dasgupta, J. Kleinberg, E. Tardos, T. Wexler, and T. Roughgarden. The price of stability for network design with fair cost allocation. In *Proc. of the 45th Annual Symposium on Foundations of Computer Science*, pages 295–304, Rome, Italy, October 17-19, 2004.
- [30] S. Albers, S. Eilts, E. Even-Dar, Y. Mansour, and L. Roditty. On nash equilibria for a network creation game. In *Proceedings of the 17th annual ACM-SIAM symposium on Discrete algorithm*, pages 89–98, Miami, Florida, USA, January 2006.
- [31] J.G. Wardrop. Some theoretical aspects of road traffic research. In *Proc. of the Institute of Civil Engineers, part II*, pages 325–378, vol. 1, 1952.
- [32] E. Koutsoupias and C. Papadimitriou. Worst-case equilibria. In *Proc. of the 16th Annual Symposium on Theoretical Aspects of Computer Science*, pages 404–413, Trier, Germany, March 4-6, 1999.
- [33] P.D. Taylor and L.B. Jonker. Evolutionary stable strategies and game dynamics. *Mathematical Biosciences*, pages 145–156, vol. 40, no. 1–2, 1978.
- [34] S. Shakkottai, E. Altman, and A. Kumar. Multihoming of users to access points in WLANs: A population game perspective. *IEEE J. Sel. Areas Commun*, pages 1207–1215, vol. 25, no. 6, 2007.
- [35] E. Altman, Y. Hayel, and H. Kameda. Evolutionary dynamics and potential games in non-cooperative routing. In *Proc. of WiOpt 2007*, pages 1–5, Limassol, Cyprus, April 16-20, 2007.
- [36] D. Niyato and E. Hossain. Competitive spectrum sharing in cognitive radio networks: a dynamic game approach. *IEEE Trans. Wireless Commun.*, pages 2651–2660, vol. 7, no. 7, 2008.



Jocelyne Elias is Associate Professor at Paris Descartes University since September 2010. She held a Post-doc position at the Department of Information and Mathematical Methods of University of Bergamo (2009-2010). She obtained her Ph.D. in Information and Communication Technology at the Department of Electronics and Information of Politecnico di Milano in 2009. Her main research interests include network optimization, and in particular modeling and performance evaluation of networks (Cognitive Radio, Wireless, Overlay and Wired Networks), as well as the application of Game Theory to resource allocation, spectrum access, and pricing problems.



Fabio Martignon received the M.S. and the Ph.D. degrees in telecommunication engineering from the Politecnico di Milano in October 2001 and May 2005, respectively. He has been associate professor at University of Bergamo, and he is now full professor in LRI (Laboratory for Computer Science) at Paris Sud University. His current research activities include cognitive radio networks, content-centric networks, network planning and game theory applications to networking problems.



Lin Chen received his B.E. degree in Radio Engineering from Southeast University, China in 2002 and the Engineer Diploma from Telecom ParisTech, Paris in 2005. He also holds a M.S. degree of Networking from the University of Paris 6. He currently works as associate professor in the department of computer science of the University of Paris-Sud XI. His main research interests include modeling and control for wireless networks, security and cooperation enforcement in wireless networks and game theory.



Eitan Altman received the Ph.D. degree in electrical engineering (1990) from the Technion-Israel Institute, Haifa. Since 1990, he has been a researcher at INRIA (National research institute in computer science and control) in Sophia-Antipolis, France. He has been in the editorial boards of several scientific journals WINET, COMNET, Comcom, JEDDS, SICON, Stochastic Models, and Journal of Economy Dynamic and Control (JEDC). He received the best paper award in the Networking 2006, Globecom 2007, IFIP Wireless Days 2009 and CNSM 2011 conferences. His areas of interest include Network Engineering Games, social networks and their control. He received in 2012 the Grand Prix de France Telecom from the French Academy of Sciences.