

 Open access • Journal Article • DOI:10.1002/MRM.27969

## **Knee menisci segmentation and relaxometry of 3D ultrashort echo time cones MR imaging using attention U-Net with transfer learning** — [Source link](#)

Michal Byra, Michal Byra, Mei Wu, Xiaodong Zhang ...+6 more authors

**Institutions:** University of California, San Diego, Polish Academy of Sciences, Veterans Health Administration

**Published on:** 01 Mar 2020 - Magnetic Resonance in Medicine (Magn Reson Med)

Related papers:

- [Knee menisci segmentation and relaxometry of 3D ultrashort echo time \(UTE\) cones MR imaging using attention U-Net with transfer learning.](#)
- [U-Net: Convolutional Networks for Biomedical Image Segmentation](#)
- [Use of 2D U-Net Convolutional Neural Networks for Automated Cartilage and Meniscus Segmentation of Knee MR Imaging Data to Determine Relaxometry and Morphometry](#)
- [Deep learning](#)
- [Automated cartilage and meniscus segmentation of knee MRI with conditional generative adversarial networks](#)

Share this paper:    

View more about this paper here: <https://typeset.io/papers/knee-menisci-segmentation-and-relaxometry-of-3d-ultrashort-4zts9vpd7d>

# UC San Diego

## UC San Diego Previously Published Works

### Title

Knee menisci segmentation and relaxometry of 3D ultrashort echo time cones MR imaging using attention U-Net with transfer learning.

### Permalink

<https://escholarship.org/uc/item/32c2k5mr>

### Journal

Magnetic resonance in medicine, 83(3)

### ISSN

0740-3194

### Authors

Byra, Michal  
Wu, Mei  
Zhang, Xiaodong  
[et al.](#)

### Publication Date




2020-03-01

### DOI

10.1002/mrm.27969

Peer reviewed

# Knee menisci segmentation and relaxometry of 3D ultrashort echo time cones MR imaging using attention U-Net with transfer learning

Michal Byra<sup>1,2</sup>  | Mei Wu<sup>1</sup>  | Xiaodong Zhang<sup>1</sup> | Hyungseok Jang<sup>1</sup>  |  
Ya-Jun Ma<sup>1</sup>  | Eric Y. Chang<sup>1,3</sup> | Sameer Shah<sup>4</sup> | Jiang Du<sup>1</sup>

<sup>1</sup>Department of Radiology, University of California, San Diego, California

<sup>2</sup>Department of Ultrasound, Institute of Fundamental Technological Research, Polish Academy of Sciences, Warsaw, Poland

<sup>3</sup>Radiology Service, VA San Diego Healthcare System, San Diego, California

<sup>4</sup>Department of Orthopedic Surgery and Bioengineering, University of California, San Diego, California

## Correspondence

Jiang Du, Department of Radiology,  
University of California, San Diego, CA  
92103-8226.

Email: jiangdu@ucsd.edu

## Funding information

The authors acknowledge grant support from GE Healthcare, NIH (1R01 AR062581, 1R01 AR068987 and 1R01 NS092650), and the VA Clinical Science Research & Development Service (1101CX001388, I21RX002367).

**Purpose:** To develop a deep learning-based method for knee menisci segmentation in 3D ultrashort echo time (UTE) cones MR imaging, and to automatically determine MR relaxation times, namely the  $T_1$ ,  $T_{1\rho}$ , and  $T_2^*$  parameters, which can be used to assess knee osteoarthritis (OA).

**Methods:** Whole knee joint imaging was performed using 3D UTE cones sequences to collect data from 61 human subjects. Regions of interest (ROIs) were outlined by 2 experienced radiologists based on subtracted  $T_{1\rho}$ -weighted MR images. Transfer learning was applied to develop 2D attention U-Net convolutional neural networks for the menisci segmentation based on each radiologist's ROIs separately. Dice scores were calculated to assess segmentation performance. Next, the  $T_1$ ,  $T_{1\rho}$ ,  $T_2^*$  relaxations, and ROI areas were determined for the manual and automatic segmentations, then compared.

**Results:** The models developed using ROIs provided by 2 radiologists achieved high Dice scores of 0.860 and 0.833, while the radiologists' manual segmentations achieved a Dice score of 0.820. Linear correlation coefficients for the  $T_1$ ,  $T_{1\rho}$ , and  $T_2^*$  relaxations calculated using the automatic and manual segmentations ranged between 0.90 and 0.97, and there were no associated differences between the estimated average meniscal relaxation parameters. The deep learning models achieved segmentation performance equivalent to the inter-observer variability of 2 radiologists.

**Conclusion:** The proposed deep learning-based approach can be used to efficiently generate automatic segmentations and determine meniscal relaxations times. The method has the potential to help radiologists with the assessment of meniscal diseases, such as OA.

## KEYWORDS

deep learning, menisci, osteoarthritis, quantitative MR, segmentation

## 1 | INTRODUCTION

Osteoarthritis (OA) is the most common form of arthritis in the knee, and the menisci play an important role in the initiation and progress of OA.<sup>1</sup> Various menisci pathologies, such as proteoglycan loss or deterioration of the collagen network, have been directly associated with the symptomatic knee OA.<sup>2-4</sup> There is growing interest in developing imaging biomarkers that could help clinicians assess and monitor the progress of OA in vivo. MR imaging can provide quantitative data related to the relaxometry and morphology of the whole joint knee anatomy. For example, the meniscal T2 and T<sub>2</sub><sup>\*</sup> relaxation times were reported to be sensitive to OA-related pathophysiological processes.<sup>5,6</sup> Menisci, however, have a short T2 and demonstrate low signal on conventional MR sequences, making quantitative assessment with the standard clinical MR sequences infeasible. In comparison, ultrashort echo time (UTE) sequences with TEs approximately 100 times shorter than those of conventional sequences can be used to image tissues with short T2.<sup>7</sup> The 3D UTE cones sequences have been proposed to measure the T1 and T1<sub>ρ</sub> relaxations for different knee tissues, including the menisci.<sup>8,9</sup> Given the possibility of using MR relaxations as promising OA biomarkers, assessment of the menisci still requires 3D segmentation, which is often performed manually and is, therefore, time-consuming and affected by inter-observer variability.<sup>10,11</sup> Development of robust automatic menisci segmentation methods could provide clinicians with quantitative MR parameters, such as T1, T1<sub>ρ</sub>, and T<sub>2</sub><sup>\*</sup> relaxations, and would present an important step for efficient assessment and monitoring of OA.

Nowadays, deep learning methods are gaining momentum in medical image analysis.<sup>12</sup> These data-driven algorithms automatically process input images to learn high-level data representations and provide the desired output, such as a decision whether the investigated image contains a pathology. Deep convolutional neural networks (CNNs) have proved to be extremely useful in solving various medical image analysis problems, including image classification and segmentation.<sup>12</sup> The U-Net CNN and its variations are perhaps the most popular deep learning methods used for image segmentation.<sup>13</sup> These CNNs for segmentation consist of contracting and expanding paths with skip connections. The contracting path (encoder) processes the input image using convolutional operators to extract a compact high-level image representation. In the next step, the expanding path (decoder) uses this representation to generate a binary mask indicating the location in the image of the object to be segmented.

The skip connections are used to include information from the contracting path in the expanding path to improve object localization. CNN-based methods were proposed for cartilage segmentation<sup>14-16</sup> and whole joint anatomy segmentation, including menisci.<sup>17</sup> The 2D U-Net CNNs for menisci

segmentation were developed based on double-echo steady-state knee joint MRI images collected from healthy subjects and from patients with OA.<sup>18,19</sup> The authors demonstrated that automatic segmentations could be used to assess menisci morphology and to extract efficient biomarkers for OA diagnosis.<sup>18,19</sup> Additionally, automatic menisci segmentation methods based, for example, on fuzzy logic and extreme learning machines were developed before deep learning techniques gained their momentum.<sup>20-22</sup> Moreover, semi-automatic menisci segmentation methods based on region growing were developed; those methods proved to perform well in the case of OA biomarker extraction.<sup>23-25</sup> Based on the obtained segmentations, the authors calculated meniscal T1<sub>ρ</sub> and T2 parameters, and related those to the levels of OA progression.<sup>24</sup> However, the quantitative evaluation of menisci (e.g., T1, T1<sub>ρ</sub>, T2, and T<sub>2</sub><sup>\*</sup> relaxation times) is challenging due to the lack of signal with conventional gradient echo sequences with echo times around 4 to 7 ms, which are too long to accurately quantify meniscus with a short T<sub>2</sub><sup>\*</sup> of around 5 ms.<sup>26</sup>

Due to small medical datasets, it is a common practice to use transfer learning with a pretrained deep learning model. This way, a model developed using a large dataset can be adjusted to address the medical imaging problem of interest. The better performing CNNs for classification, such as the VGG19 or InceptionV3,<sup>27,28</sup> have been developed using the ImageNet dataset, which includes over 1,000,000 RGB images.<sup>29</sup> The first convolutional layers of these deep CNNs identify low level concepts in the images, such as color blobs, illustrating the importance of these basic features for efficient object recognition.<sup>30</sup> In practice, it is usually reasonable to use these already developed convolutional operators for the new deep learning model. In MR imaging, transfer learning has been proven to provide good results in, for instance, image classification.<sup>31</sup> In the study on whole joint anatomy segmentation, the authors pretrained their CNN using a different set of MR images.<sup>17</sup> In the case of computer vision, it was demonstrated that transfer learning methods could improve the CNN-based road scene semantic segmentation.<sup>32</sup>

The aim of this work is to show the feasibility of automatic quantitative characterization of the menisci in 3D UTE cones MR imaging. We present an “end to end” method for the automated segmentation of the menisci and the extraction of quantitative MR parameters, namely the T1, T1<sub>ρ</sub>, and T<sub>2</sub><sup>\*</sup> relaxation times. First, we use transfer learning to develop an attention 2D U-Net CNN based on a relatively small set of MR volumes acquired using 3D UTE cones sequences. For this task, we use a model pretrained on a large set of nonmedical images. Additionally, we use the attention mechanism to improve the segmentation performance. Second, we compare the average T1, T1<sub>ρ</sub>, and T<sub>2</sub><sup>\*</sup> values calculated using manual and automatic segmentations. The usefulness of our approach is evaluated using regions of interest (ROIs)

provided by 2 experienced radiologists. We study the inter-observer variability between the radiologists and evaluate the CNNs developed using ROIs provided by each radiologist. To our knowledge, this study presents the first examples of knee menisci segmentation using transfer learning with deep CNNs in 3D Cones MR imaging for accurate assessment of meniscal relaxometry.

## 2 | METHODS

### 2.1 | UTE imaging and data collection

A total of 61 human subjects (aged 20-88 years; mean age,  $55 \pm 16$  years; 30 males, 31 females) was recruited for this retrospective study. Initial clinical screening included a clinical exam and lower extremity radiograph to select patients with no knee OA symptoms as well as patients with suspicion of OA. Informed consent was obtained from all subjects in accordance with guidelines of the University of California San Diego Institutional Review Board. The study included 27 healthy participants, 25 patients with mild OA, and 13 patients with moderate OA.

Whole knee joint imaging was performed using 3D UTE-Cones sequences on a 3T MR750 scanner (GE Healthcare Technologies, Milwaukee, WI). An 8-channel knee coil was used for signal excitation and reception. The protocol included 3D UTE Cones imaging and measurement of  $T_1$ ,  $T_{1\rho}$ , and  $T_2^*$  relaxations. The basic 3D UTE-Cones sequence used a short rectangular pulse for signal excitation, followed by k-space data acquisition along twisted spiral trajectories ordered in the form of multiple cones.  $T_1$  was quantified using 3D UTE-Cones with actual flip angle imaging (AFI) and variable flip angle (VFA) approach, where B1 inhomogeneity was mapped using the 3D UTE-Cones-AFI technique, followed by accurate  $T_1$  mapping using the 3D UTE-Cones-VFA technique.  $T_{1\rho}$  was quantified using 3D UTE-Cones-Adiab $T_{1\rho}$  imaging, where identical nonselective adiabatic full-passage (AFP) pulses with a duration of 6.048 ms, bandwidth of 1.643 kHz, and maximum B1 amplitude of 17  $\mu$ T were used to generate  $T_{1\rho}$  contrast.<sup>8</sup> Multispoke acquisition after Adiab $T_{1\rho}$  preparation was incorporated for improved time-efficiency (e.g.,  $N_{sp}$  spokes were acquired per adiabatic  $T_1 T_{1\rho}$  preparation).  $T_2^*$  was quantified by acquiring fat-saturated multi-echo UTE-Cones data. All 3D UTE Cones data were acquired with a field of view of  $15 \times 15 \times 10.8$  cm<sup>3</sup> and receiver bandwidth of 166 kHz.

Other sequence parameters were: (1) 3D UTE-Cones- $T_2^*$ : repetition time (TR) = 45 ms; flip angle (FA) = 10°; matrix =  $256 \times 256 \times 36$ ; fat saturation; multi-echo of 0.032, 4.4, 8.8, 13.2, 17.6, and 22 ms; and scan time of 3 min 40 s; (2) 3D UTE-Cones-AFI:  $TR_1/TR_2 = 20/100$  ms; FA = 45°; matrix =  $128 \times 128 \times 18$ ; and scan time of 4 min 57 s; (3) 3D UTE-Cones-VFA: TR = 20 ms; FA = 5°, 10°, 20°, and 30°;

matrix =  $256 \times 256 \times 36$ ; and scan time of 9 min 28 s; (4) 3D UTE-Cones-Adiab $T_{1\rho}$ : TR = 500 ms; FA = 10°; matrix =  $256 \times 256 \times 36$ ;  $N_{sp} = 25$ ; number of AFP pulses  $N_{AFP} = 0, 2, 4, 6, 8, 12, \text{ and } 16$ ; each with scan time of 2 min 34 s. The total acquisition time for the 4 UTE-Cones sequences was approximately 35 min. The Levenberg-Marquardt algorithm was used for nonlinear fitting of UTE-Cones data based on prior reported equations to calculate  $T_1$ ,  $T_{1\rho}$ , and  $T_2^*$ .<sup>33</sup> All calculations were performed in Matlab (Mathworks, Natick, MA).

To account for potential motion during the relatively long acquisitions, the elastix motion registration based on the Insight Segmentation and Registration Toolkit was applied to the 3D UTE-Cones data before quantification.<sup>34,35</sup> The first set of UTE data (UTE-Cones- $T_2^*$  data) was treated as fixed images, and the remaining sets of data (AFI, VFA, and Adiab $T_{1\rho}$ ) were treated as moving images. 3D non-rigid registration was applied to register the moving images to fixed images. In the 3D nonrigid registration, both rigid (affine) and nonrigid (B-spline) were applied as a 2-staged approach to register the images. All registrations were driven by Advanced Mattes mutual information.<sup>34</sup> The transformations were obtained by registration of the grayscale images (source UTE images), which were then applied to the labeled images. Adaptive stochastic gradient descent optimizer was used to optimize both the affine and B-spline registration.

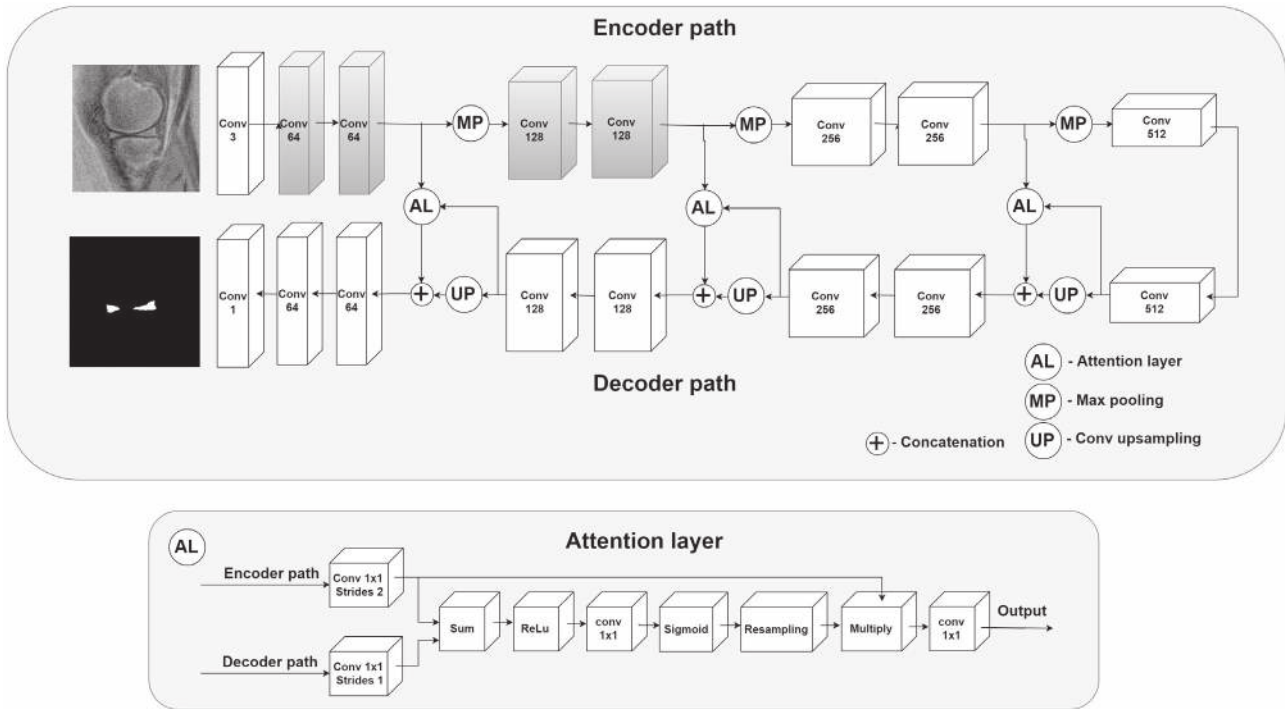
Two experienced radiologists with 22 (Rad 1) and 14 (Rad 2) years of experience participated in our study. First, we investigated which images would be best for outlining the ROIs. Menisci show as high signal in the UTE images, but as lower signal with later echoes. Subtraction of a later echo image from the first echo may provide high contrast imaging of menisci. Different subtracted images were reconstructed and presented to the radiologists to select those providing the best visibility of the menisci in respect to the surrounding tissues. Based on subjective assessment, subtracted Adiab $T_{1\rho}$ -weighted MR images corresponding to  $N_{AFP}$  of 0 and 2 were used to outline the ROIs independently by both radiologists (Figure 1). Additionally, the lateral meniscus (LM) and medial meniscus (MM) were indicated.

### 2.2 | Model development and performance evaluation

The deep learning approach used in our study was based on the U-Net architecture, see Figure 2. Similar models, all inspired by this architecture, achieved good results in the case of the menisci segmentation in the previous papers.<sup>17-19</sup> Additionally, we used attention layers to process the feature maps propagated through the skip connections.<sup>36,37</sup> Self-attention mechanisms proved to improve segmentation performance in the case of small objects in computed tomography.<sup>37</sup> Clearly, the menisci constitute a small part of



**FIGURE 1** The MR images obtained using the UTE 3D cones for the NIR value of 0 (A) and 2 (B), and the resulting subtracted image (C). The subtracted images were selected by the radiologists to outline the menisci



**FIGURE 2** The proposed 2D attention U-Net CNN for the menisci segmentation. Gray colors indicate the convolutional blocks initiated with the weights extracted from the VGG19 network. For each block the number of filters is indicated below the block type. AL, attention layer; Conv, 2D convolutional block; Max pool, max pooling operator; Up, up sampling with a 2D transposed convolutional block (kernel size of  $2 \times 2$ , stride of  $2 \times 2$ ). Each convolutional block, except for the first and the last block, used the rectifier linear unit (ReLU) as the activation function and  $3 \times 3$  convolutional filters. The first used  $1D \ 1 \times 1$  convolutional filters and no activation function was used for this layer. The last block used the sigmoid activation function suitable for the binary classification. AL layers were applied to process the feature maps propagated through the skip connections, to let the network focus more on particular regions in feature maps, instead of analyzing the entire image representations

the knee and, consequently, the whole MR image. Attention layers help the network focus more on small regions, instead of analyzing the entire field of view.

In the case of the standard U-net architecture, feature maps from the encoder path are directly concatenated with the output of the decoder convolution layers. This output is related to menisci localization in the image. In our case, the attention layers filter the encoder feature maps based on the output of the decoder convolution layers (Figure 2) to incorporate the information about initial menisci localization. Therefore, areas of feature maps that are far from the initial menisci localization are compressed. This way, less noisy feature maps are propagated through the skip connections. Moreover, we

used the following transfer learning-based approach to the model development: the weights of the first 2 convolutional blocks of our U-Net were initiated with the weights of the corresponding first 2 convolutional blocks of the VGG19 model pretrained on the ImageNet dataset.<sup>27,29</sup> The first layers of pretrained CNNs like the VGG19 commonly include blob and edge detectors; therefore, these layers can provide generic image features useful for the analysis of, for instance, MR images, which are similar to natural images. Moreover, deep layers extract high-level features more related to the particular recognition problem.

Transfer learning methods using the VGG19 CNN performed well for various medical image analysis problems



across different medical imaging modalities.<sup>12,31,38</sup> Thanks to this replacement, our U-Net CNN demonstrated its capability to extract low level image features from the beginning. These capabilities did not have to be redeveloped using the training set. Another issue was related to the fact that the VGG19 CNN was trained using red/green/blue (RGB) images as input. MR images, on the other hand, are grayscale, which raises a question about how to efficiently use the pretrained model. The most common approach is to duplicate the grayscale intensities across all color channels.<sup>31,39</sup> Moreover, the grayscale images should be normalized accordingly to use the pretrained network more efficiently. This issue is important because we use the subtracted images, which have a unique pixel intensity distribution. Generally, the optimal normalization could be determined using the validation set. However, this would be time consuming. To address the mentioned issues automatically, we decided to add an additional 1D convolutional block (with a bias term) consisting of 3 convolutional filters to the front of our U-Net. This way, the images are first processed before they are passed to the convolutional blocks originating from the VGG19 CNN. The aim of this block is to adjust the subtracted images, rescale the pixel intensities, and perform grayscale-to-RGB conversion to more efficiently use the power of the pretrained convolutional blocks. The parameters of this layer can be determined during the training with the backpropagation algorithm.<sup>40</sup>

In this work, in comparison to the previous studies,<sup>17-19</sup> we decided to train our network using the Dice score-based loss function. The Dice score (or coefficient) is defined in the following way:

$$\text{Dice score} = \frac{2|M \cap A|}{|M| + |A|}$$

where  $M$  is the manual segmentation ROI,  $A$  is the automatic segmentation ROI predicted by the CNN, and  $|\cdot|$  refers to set cardinality. Use of the Dice score for training has several advantages. First, this metric is commonly used to assess the segmentation performance; therefore, the maximization of this parameter is desirable. Second, many studies show that the Dice score-based training is a good choice for heavily imbalanced data,<sup>41,42</sup> such as objects, like menisci, that occupy a small part of the whole image.

The dataset was divided into training, validation, and test sets with a 36/10/15 split. The validation set included data from 5 healthy participants and from 5 patients with mild or moderate OA. The test set included data from 7 healthy participants and from 8 patients with mild or moderate OA. Next, the 3D MR volumes were broken down into 2D images. In our case, working with 2D data had several advantages. First, it enabled the usage of transfer learning with deep models pretrained on natural 2D images. Second,

we avoided training a deep model for 3D MRI images, which would have required large amounts of data. Third, models trained on 2D MR images are usually more general; for example, changing the number or distance between MR image slices does not influence the model. Only the 2D MR images containing the meniscus were used for the development and evaluation of the models. Contrast of each image was improved using Matlab implementation of the edge-aware contrast manipulation algorithm with the parameters selected experimentally.<sup>43</sup>

Next, the images and the corresponding binary masks were automatically cropped to  $192 \times 192$  to narrow the field of view, then resized to the default VGG19 input size of  $224 \times 224$ . The MR images were resized using the bilinear transformation, whereas for the binary masks, the nearest neighborhood algorithm was applied. The training set consisting of 458 2D images was augmented by image rotation and horizontal flipping to produce 2748 images. During the training, we monitored the Dice score on the validation set. The U-Net was trained using the backpropagation with the Adam optimizer.<sup>44</sup> Weights of the layers were initialized using the Xavier uniform initializer.<sup>45</sup> The batch size was set to 32. The learning rate and the momentum were set to 0.001 and 0.9, respectively. However, the learning rate was exponentially decreased every 5 epochs by using a drop factor of 0.5 if no improvement was observed on the validation set. The training was stopped if no improvement in respect to the Dice Score was observed on the validation set after 15 epochs. After the training, the better performing model with respect to the validation set was selected. The networks were trained in Python using Tensorflow.<sup>46</sup> The experiments were performed on a computer equipped with 4 GeForce GTX 1080 Ti graphics cards. By CNN 1 and CNN 2, we refer to the models trained separately using the ROIs provided by the first and the second radiologist, respectively.

After the training, the better performing CNN models were used to calculate the ROIs using the test set, which contained 191 2D images from 15 menisci. In the next step, the manual and automatic segmentations were used to calculate the average T1, T1<sub>ρ</sub>, and T2\* relaxations for each 2D ROI. Average percentage relative absolute distance errors between the raters and the CNNs were calculated. Due to small number of patients with different levels of OA, we calculated the errors using the entire dataset. Two-sided *t*-test at the significance level of 0.01 with the Bonferroni correction was applied to examine whether the mean estimates were significantly different in the case of the manual and automatic segmentations. Dice scores, Pearson's linear correlation coefficient, and Bland-Altman plot were used to assess the level of agreement between the CNNs and radiologists. We separately compared the results obtained for the entire menisci, LM, and MM. We examined 4 cases, Rad 1 versus Rad 2, Rad 1 versus CNN 1, Rad 2 versus CNN 2, and CNN 1 versus CNN2, respec-

**TABLE 1** Average Dice scores (plus median and 95% confidence interval) calculated using the manual and automatic segmentations<sup>a</sup>

		Rad 1	Rad 2	CNN 1	CNN 2
Rad 1	MM+LM	1	–	–	–
	MM				
	LM				
Rad 2	MM+LM	0.820 (0.839, 0.807-0.831)	1	–	–
	MM	0.826 (0.842, 0.809-0.843)			
	LM	0.814 (0.832, 0.797-0.830)			
CNN 1	MM+LM	0.860 (0.871, 0.850-0.868)	0.818 (0.845, 0.805-0.831)	1	–
	MM	0.872 (0.882, 0.862-0.883)	0.831 (0.857, 0.812-0.850)		
	LM	0.847 (0.884, 0.833-0.862)	0.805 (0.832, 0.787-0.823)		
CNN 2	MM+LM	0.835 (0.850, 0.825-0.844)	0.833 (0.863, 0.819-0.846)	0.882 (0.900, 0.873-0.890)	1
	MM	0.841 (0.855, 0.829-0.853)	0.841 (0.864, 0.822-0.861)	0.894 (0.903, 0.885-0.904)	
	LM	0.829 (0.847, 0.815-0.843)	0.825 (0.855, 0.806-0.843)	0.871 (0.896, 0.857-0.885)	

<sup>a</sup>Rad 1 and Rad 2 refers to ROIs outlined by 2 radiologists. CNN 1 and CNN 2 indicate the ROIs generated by the CNNs developed using the ROIs provided by the first and second radiologist, respectively.

tively. Moreover, for each CNN, we determined the receiver-operating characteristic (ROC) curve, then calculated the areas under the ROC curve (AUC) to assess how effective the networks were at detecting menisci pixels.<sup>47</sup> To assess the robustness of the proposed method, we applied the CNNs to the MR images from the test set with no menisci present. This was done to assess whether the CNNs might generate false positives. In this case, an image was classified to have menisci if the CNN detected at least 2 adjacent menisci pixels.

### 3 | RESULTS

The average Dice score for the ROIs outlined by 2 radiologists was equal to 0.820, indicating good inter-observer agreement, see Table 1. Both CNNs produced good Dice coefficients of 0.860 and 0.833 for the Rad 1 versus CNN 1 and the Rad 2 versus CNN 2, respectively. Both CNNs were excellent at detecting menisci pixels, with the AUC values equal to 0.96 and 0.95 for the CNN 1 and CNN 2, respectively. The CNNs did not generate false positives when applied to the test slices with no menisci present. The Dice score between the Rad 1 and CNN 2 (developed using the second radiologist's ROIs) was equal to 0.835. Similarly, in the case of the Rad 2 and CNN 1, the Dice score was equal to 0.818. These results show that the agreement between the radiologists is similar to agreement between 1 radiologist and the deep learning model developed

using ROIs provided by another radiologist. Moreover, the Dice score for the ROIs produced by the CNNs was equal to 0.882, being significantly higher than the score obtained for 2 radiologists ( $P$ -value  $< 0.001$ ). In the case of the MM and LM assessed separately, we obtained similar results. However, as is presented in Table 1, the Dice scores obtained for the MM segmentations were slightly higher in each case.

Table 2 lists the average values of the  $T1$ ,  $T1_\rho$ ,  $T_2^*$ , and ROI areas calculated based on the manual and automatic segmentations. There were no associated differences between the relaxation parameters estimated using the manual and automatic segmentations; for the  $T1$ , the  $P$ -values were equal to 0.96 and 0.65 for the CNN 1 and CNN 2, respectively. The corresponding  $P$ -values for the  $T1_\rho$  estimation were equal to 0.71 and 0.49. Similar results were obtained for the  $T_2^*$  estimation, with  $P$ -values of 0.55 and 0.91, respectively. In the case of the ROI area estimation, the second radiologist outlined significantly larger ROIs on average than the first ( $P$ -value  $< 0.001$ ), as depicted in Table 2. However, the ROIs calculated using the CNN 1 did not differ significantly from the ROIs produced by the CNN 2 ( $P$ -value = 0.07). Moreover, there was no difference between the manual and automatic segmentations with respect to the ROI area calculations, with  $P$ -values of 0.50 and 0.68, respectively. The average percentage relative absolute distance errors for the CNN 1 and CNN 2 were equal to 1.95% and 2.26% for  $T1$ , 2.56% and 3.03% for  $T1_\rho$ , 4.59% and 6.15% for  $T_2^*$ , and 14.27% and 15.21% for the ROI area estimation, respectively.



**TABLE 2** Average quantitative MR parameters (plus median and 95% confidence interval) calculated using the manual and automatic segmentations<sup>a</sup>

		Rad 1	Rad 2	CNN 1	CNN 2
T1 [ms]	MM+LM	959.4 (961.8, 947.9-970.9)	967.0 (979.9, 954.8-979.3)	958.9 (960.3, 947.5-970.4)	963.1 (962.6, 951.6-974.6)
	MM	969.9 (961.6, 955.3-984.6)	973.5 (975.9, 957.1-989.9)	964.4 (957.3, 950.3-978.5)	967.6 (957.9, 953.2-981.9)
	LM	947.5 (961.8, 929.5-965.4)	959.7 (980.9, 941.2-978.3)	952.7 (966.3, 934.2-971.3)	958.1 (975.9, 939.5-976.7)
T1 <sub>p</sub> [ms]	MM+LM	27.5 (27.4, 26.9-28.0)	28.0 (28.0, 27.5-28.6)	27.3 (27.4, 26.8-27.9)	27.8 (27.8, 27.2-28.3)
	MM	27.9 (28.0, 27.1-28.8)	28.5 (28.5, 27.7-29.2)	27.7 (27.8, 27.0-28.5)	28.0 (28.0, 27.3-28.7)
	LM	26.9 (26.6, 26.1-27.7)	27.5 (27.3, 26.7-28.4)	26.9 (26.6-26.1-27.6)	27.5 (27.4, 26.7-28.3)
T <sub>2</sub> <sup>*</sup> [ms]	MM+LM	9.8 (9.0, 9.3-10.3)	9.9 (9.0, 9.4-10.4)	9.6 (9.0, 9.1-10.0)	9.9 (9.1, 9.4-10.4)
	MM	9.6 (9.0, 9.0-10.1)	9.7 (9.1, 9.2-10.3)	9.4 (9.1, 8.9-9.9)	9.6 (9.2, 9.1-10.1)
	LM	10.1 (8.9, 9.2-10.9)	10.1 (8.8, 9.3-10.9)	9.7 (8.7, 8.9-10.5)	10.2 (9.0, 9.3-11.0)
Area [mm <sup>2</sup> ]	MM+LM	60.6 (57.5, 57.4-63.9)	71.8 (66.1, 67.5-76.1)	64.0 (59.5, 60.6-67.3)	68.8 (63.5, 64.7-72.8)
	MM	65.7 (63.3, 60.6-70.9)	79.2 (76.6, 72.4-85.9)	68.6 (65.2, 63.1-74.0)	73.4 (68.6, 66.8-79.8)
	LM	55.0 (52.5, 51.4-58.7)	63.7 (61.2, 59.2-68.3)	58.9 (56.2, 55.4-62.3)	63.8 (60.0, 59.3-68.3)

<sup>a</sup>Rad 1 and Rad 2 refer to ROIs outlined by 2 radiologists. CNN 1 and CNN 2 indicate the ROIs generated by the CNNs developed using the ROIs provided by the first and second radiologist, respectively.

Strong Dice scores indicated good agreement between the quantitative parameters estimated using the manual and automatic segmentations, as depicted in Figures 3-5. In Figure 3, the Pearson's linear correlation coefficients for the T1 values for the Rad 1 versus Rad 2, Rad 1 versus CNN 1, Rad 2 versus CNN 2, and CNN 1 versus CNN 2 were equal to 0.91, 0.94, 0.90, and 0.95, respectively. For the T1<sub>p</sub> values depicted in Figure 4, the coefficients were equal to 0.92, 0.96, 0.93, and 0.95, respectively. Finally, for the T<sub>2</sub><sup>\*</sup> relaxations shown in Figure 5, the linear correlation coefficients were equal to 0.92, 0.97, 0.94, and 0.97, respectively. All obtained correlation coefficients were high (*P*-values < 0.001), indicating a good level of agreement between the radiologist and the deep learning models, see Bland-Altman plots in Figures 3-5. Figure 6 shows the manual and automatic segmentations obtained for 4 cases from the test set. Figure 6A,B illustrates cases in which a high level of agreement was achieved, while Figure 6C,D presents examples in which a lower level of agreement between the radiologists and radiologists/models was obtained.

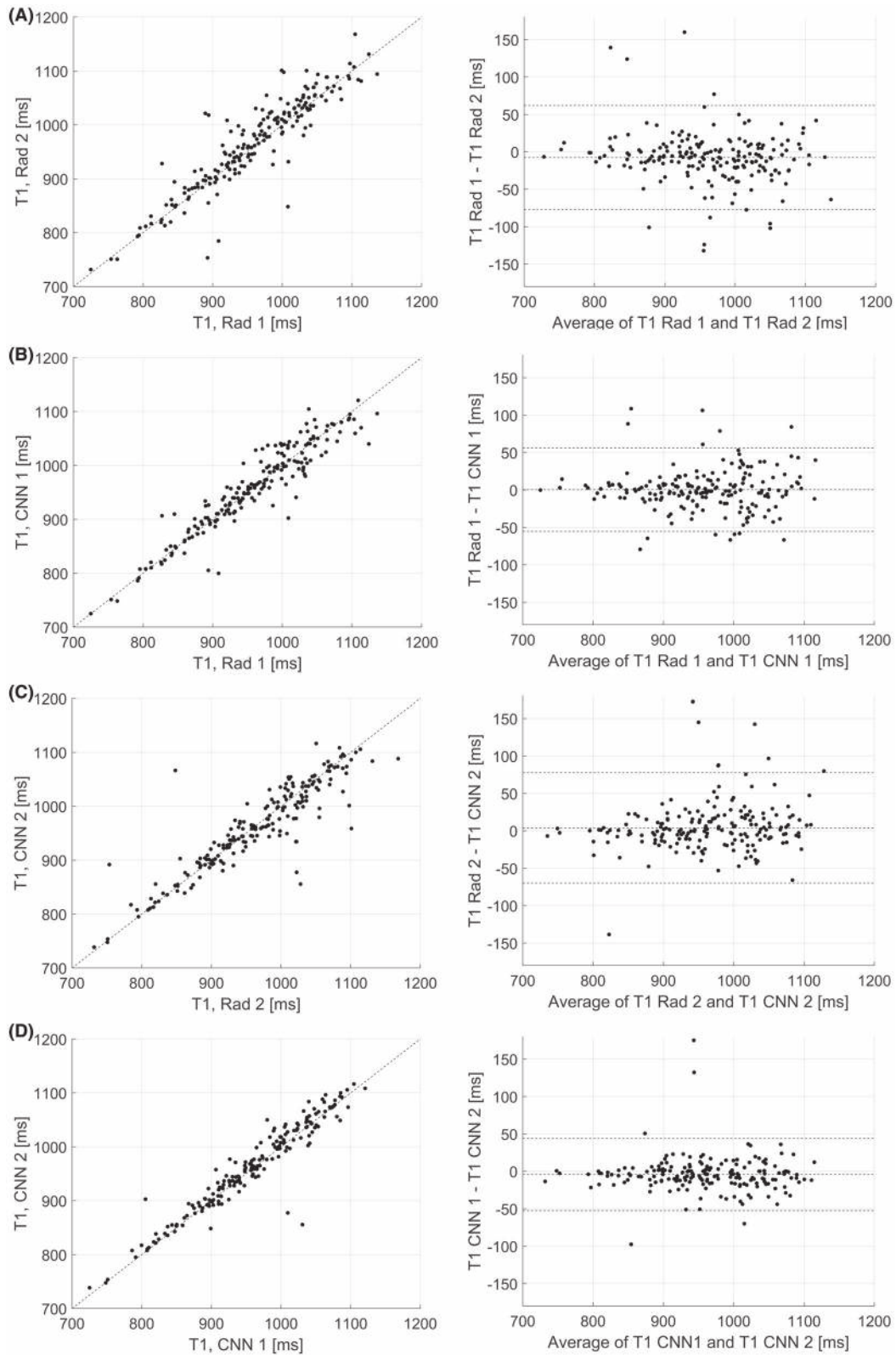
## 4 | DISCUSSION

In this work, we proposed an efficient deep learning-based approach to knee menisci segmentation and extraction of quantitative MR parameters in 3D UTE Cones MR imaging. ROIs provided by 2 radiologists were used as the ground truth for the performance evaluation. Our results show that the proposed approach can successfully segment the menisci and can provide quantitative MR measures (TRs and

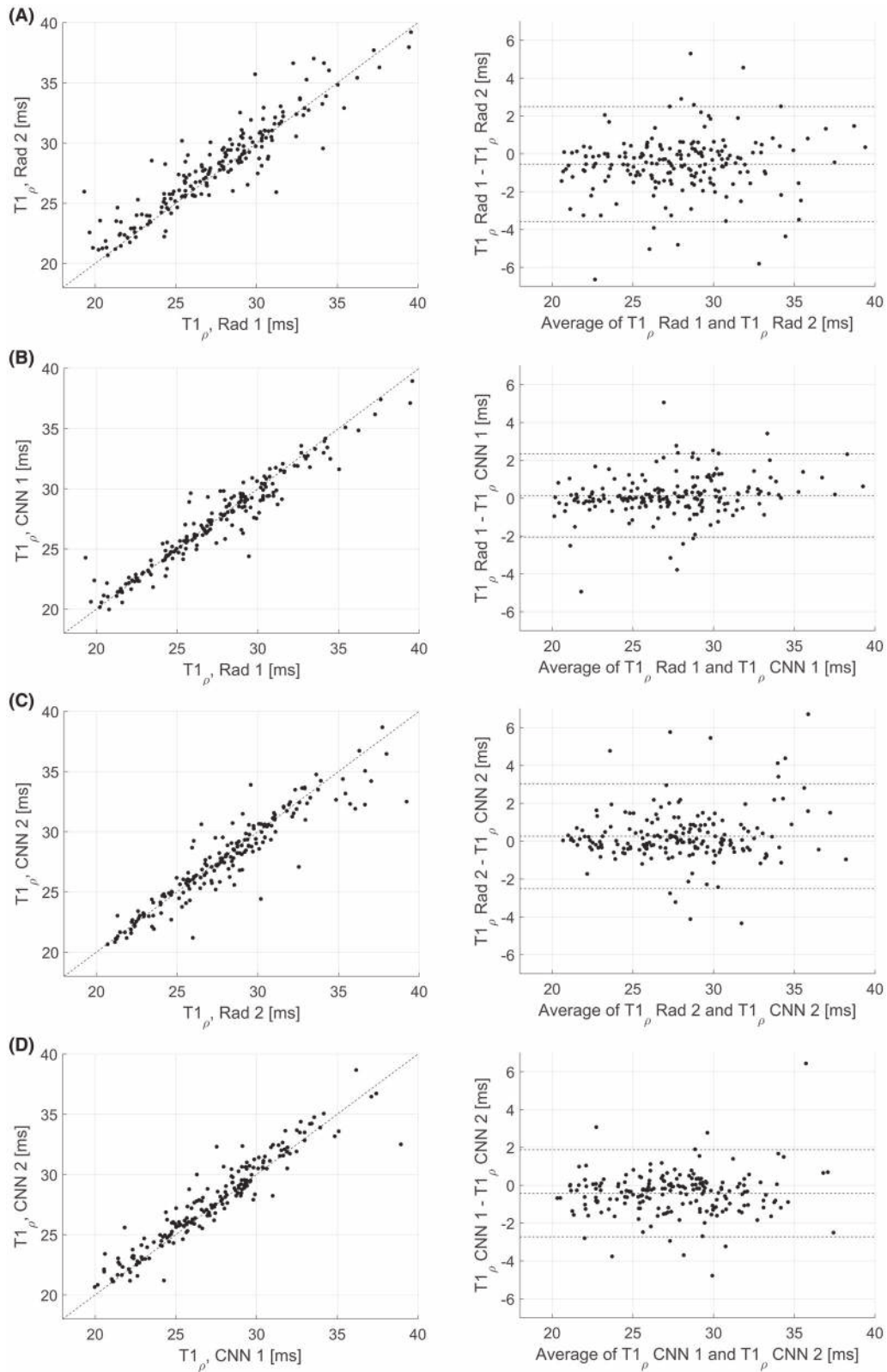
morphology) with similar accuracy to those obtained by 2 radiologists. The level of agreement, measured by the Dice score, between the radiologists was similar as between the radiologists and the deep learning models developed using ROIs provided by another radiologist. The Dice score between the ROIs generated by the 2 radiologists was equal to 0.820, while the Dice score between the first radiologist and CNN 2 (developed using the second radiologist's ROIs) was equal to 0.839. In the case of the second radiologist and CNN 1, the Dice score was equal to 0.818. Additionally, both CNNs produced strong Dice coefficients equal to 0.860 and 0.835 for the CNN 1 and CNN 2, respectively.

These results illustrate an important issue related to the assessment of the segmentation algorithms: the Dice score of 1.0 in the case of the CNN 1 would result in the Dice score of 0.820 for the Rad 2 versus CNN 1 comparison because, in this case, the ROIs generated by the network would be the same as those provided by the first radiologist. Ideally, the inter-observer agreement should be taken into account to evaluate the performance of the automatic segmentation in a fairer way. The Dice score between the ROIs generated using the CNN 1 and CNN 2, equal to 0.882, was significantly higher than the Dice score for the radiologists, which was 0.820. This promising result suggests that the performance of the automatic segmentation was driven more by the underlying image data and that the deep learning may provide results less affected by the inter-observer variability of the ROI annotators.

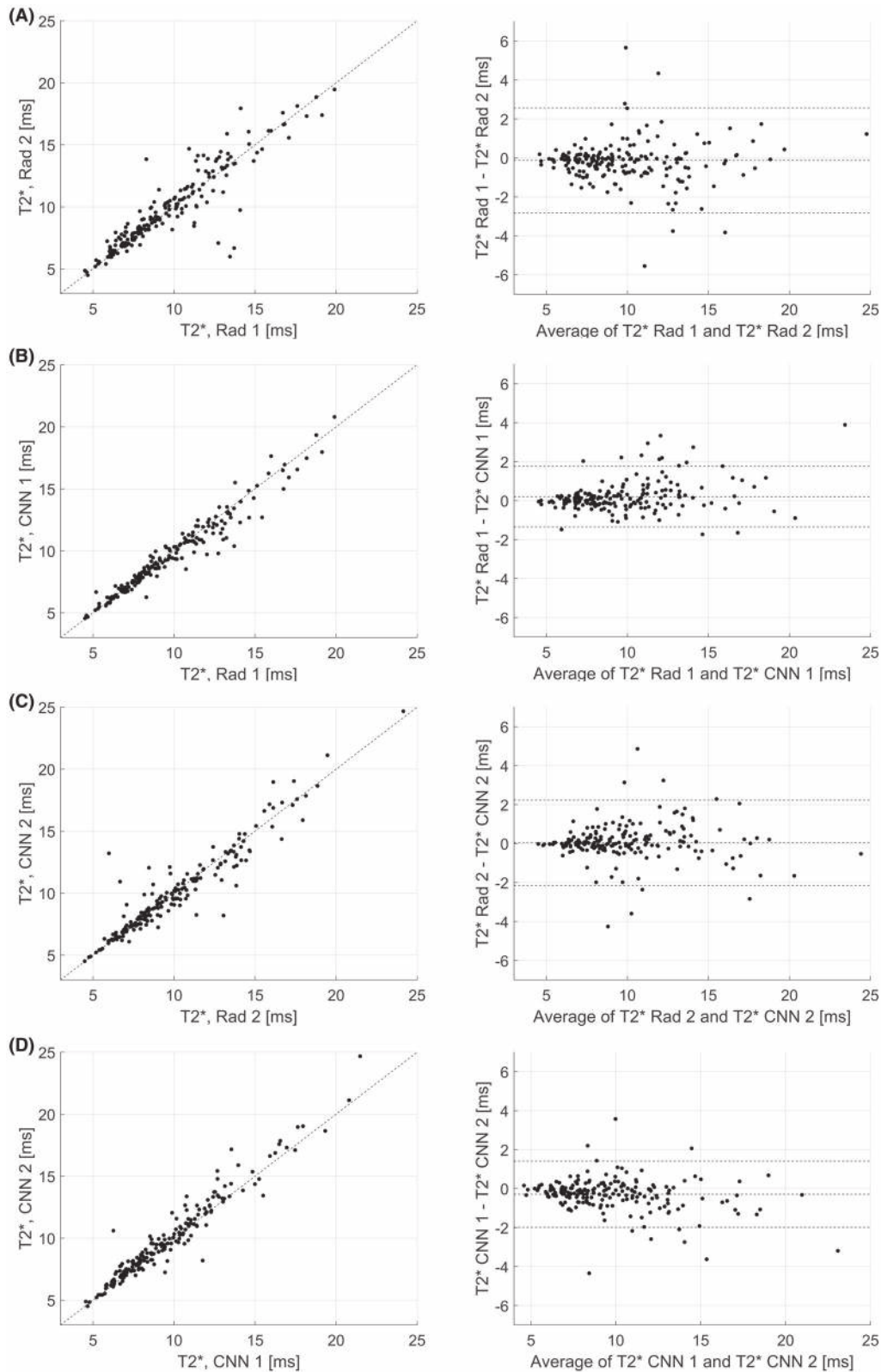
The Dice scores achieved by the proposed method are comparable or better than the results reported in the



**FIGURE 3** The relationships and Bland-Altman plots for the average T1 values calculated using the manual and automatic segmentations provided by the radiologists and the CNNs, relationship for the radiologists' ROIs (linear correlation coefficient of 0.91;  $P$ -value  $< 0.001$ ) (A), relationship between the CNN1 and CNN2 (0.95;  $P$ -value  $< 0.001$ ) (B). C,D, Show the corresponding relationships for the CNN 1 (0.94;  $P$ -value  $< 0.001$ ) and CNN 2 (0.90;  $P$ -value  $< 0.001$ ) in respect to the radiologists' ROIs, which were used to develop the models

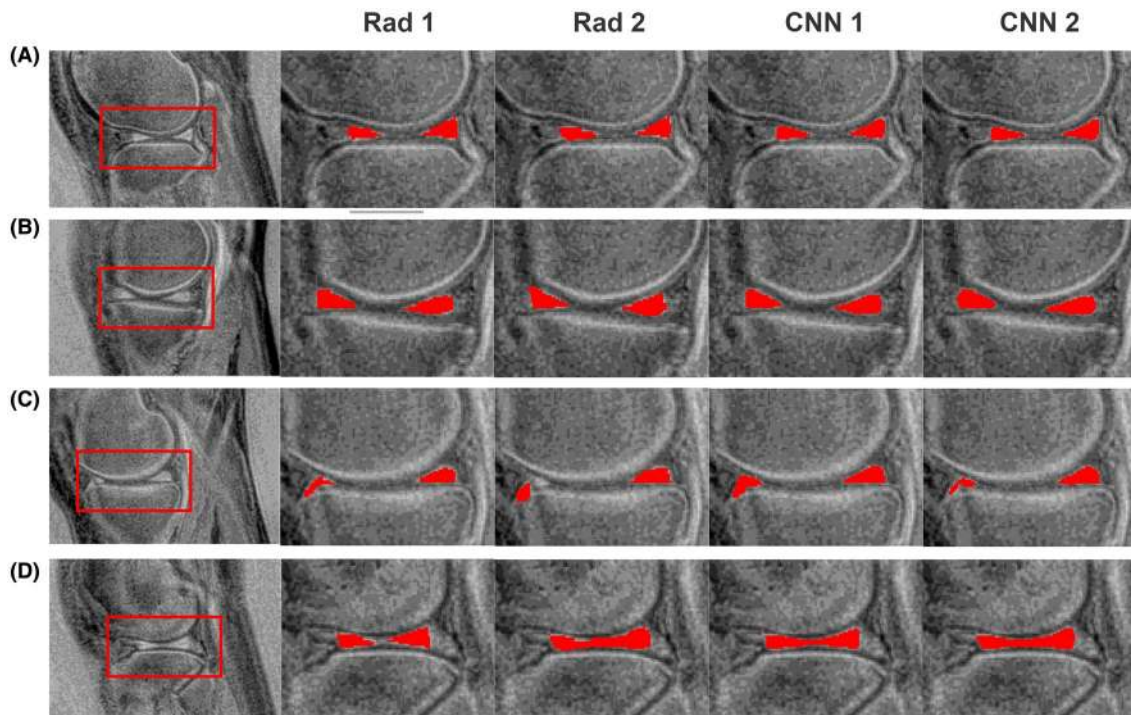


**FIGURE 4** The relationships and Bland-Altman plots for the average  $T1\rho$  values calculated using the manual and automatic segmentations provided by the radiologists and the CNNs, relationship for the radiologists' ROIs (linear correlation coefficient of 0.92;  $P$ -value < 0.001) (A), relationship between the CNN1 and CNN2 (0.95;  $P$ -value < 0.001) (B). C,D, Show the corresponding relationships for the CNN 1 (0.96;  $P$ -value < 0.001) and CNN 2 (0.93;  $P$ -value < 0.001) in respect to the radiologists' ROIs, which were used to develop the models



**FIGURE 5** The relationships and Bland-Altman plots for the average  $T_2^*$  values calculated using the manual and automatic segmentations provided by the radiologists and the CNNs, relationship for the radiologists' ROIs (linear correlation coefficient of 0.92,  $P$ -value < 0.001) (A), (B) relationship between the CNN1 and CNN2 (0.95;  $P$ -value < 0.001) (B). C,D, Show the corresponding relationships for the CNN 1 (0.97;  $P$ -value < 0.001) and CNN 2 (0.95;  $P$ -value < 0.001) in respect to the radiologists' ROIs, which were used to develop the model





**FIGURE 6** Examples illustrating the results of the manual and automatic segmentations. A,B, Results for which a large level of agreement was obtained for each method. C, The second radiologist, in comparison to the first one, outlined the right part of meniscus differently, but both deep models generated similar segmentations. D, The first radiologist outlined the meniscus in a conservative manner; in comparison, the second radiologists and both CNNs generated larger ROIs

previous papers.<sup>17-19</sup> In Norman et al,<sup>18</sup> the authors used a 2D U-Net developed from scratch on a set of 2 different datasets. The first set included 464  $T1_p$ -weighted volumes and, in this case, a Dice score of approximately 0.685 was obtained (we averaged the Dice scores reported in the paper for the LM and MM to simplify the comparison). The second set included 174 3D double-echo steady state volumes; for this dataset, the Dice score of approximately 0.771 was achieved. In Tack et al,<sup>19</sup> the authors used a 2D U-Net trained using 88 3D double-echo steady state volumes from the Osteoarthritis Initiative and achieved a Dice score of around 0.828. In this case, however, the ROIs calculated by the 2D U-Net were additionally processed using a 3D U-Net to further improve the results. Using this method, the Dice score of 0.888 was obtained.

In Zhou et al,<sup>17</sup> the authors used a U-Net-inspired CNN to segment whole joint knee anatomy, including menisci. The model was trained with 20 3D data volumes acquired using sagittal frequency fat-suppressed 3D fast spin-echo sequence. In this case, the CNN model was first pretrained using a 60 sagittal 3D  $T1$ -weighted spoiled gradient recalled echo knee image dataset which included ROIs of cartilage and bone outlined by imaging experts.<sup>48</sup> The authors achieved a Dice score of around 0.72 for the menisci segmentation, which, similar to Tack et al,<sup>19</sup> was subsequently improved using additional postprocessing algorithms, producing the

final Dice score of 0.831. Although the Dice scores obtained in our study were high, direct comparison of our results with the Dice scores obtained by other authors is difficult for several reasons. First, in the mentioned studies, different MR data were used to develop the networks. As presented in Norman et al,<sup>18</sup> there was a significant difference in performance between the models developed using  $T1_p$ -weighted images and the models developed using 3D double-echo steady state volumes. For the menisci segmentation, we used MR images obtained through UTE MR imaging. Images generated in this way, however, have lower quality in comparison to regular clinical images.

It remains to be investigated which MR imaging method should be used to obtain the best segmentation results. The approach proposed in our study may serve as a first step in answering this question. In our case, several different images of the menisci were presented to radiologists and they were asked to select the one that would be best for preparing the ROIs. Comparison of the results is also difficult due to the fact that the methods described in previous papers were developed based on reference ROIs provided by radiologists and technicians with different levels of experience. In Maier-Hein et al,<sup>49</sup> results from a large number of biomedical image analysis challenges, including segmentation, were analyzed, demonstrating that making a change to the reference annotations may change the challenge winner's



ranking; therefore, segmentation performance is related to the quality of annotations. In our study, the CNNs trained using ROIs provided by 2 radiologists achieved different Dice scores. Moreover, except for the results reported in Norman et al,<sup>18</sup> the authors developed the algorithms without a real validation set, which could result in overfitting and overly optimistic Dice scores. In the case of our study, the dataset was divided into training, validation, and test sets, and the model selection was performed using the validation set.

Our study shows the feasibility of providing quantitative MR measures for the menisci in an automatic manner. There were no statistical differences between the average T1, T1<sub>ρ</sub>, and T2\* parameters calculated for each ROI using the manual and automatic segmentations. Additionally, we obtained good linear correlation coefficients of at least 0.90 for the manual and automatic segmentations. It is worth noting that, as in the case of the Dice score, the agreement between the CNNs was higher than that of the radiologists. The correlation coefficient for the T2\* estimation was equal to 0.97, while the correlation coefficient for the radiologists was equal to 0.92. As far as we know, this is the first study reporting T1, T1<sub>ρ</sub>, and T2 relaxation values of the menisci based on fully automatic segmentation of 3D UTE images. Nevertheless, we can compare our results with those reported in one of the previous studies on cartridge compartments segmentation.<sup>18</sup> The authors compared T1<sub>ρ</sub> and T2 values determined using ROIs generated by a radiologist and 2D U-Net, and obtained good linear correlation coefficients of around 0.92.

The proposed approach to model development has several advantages. First, thanks to the transfer learning and attention mechanism, we were able to develop a well-performing 2D U-Net CNN for menisci segmentation. The first 2 convolutional blocks of our U-Net were replaced with the blocks extracted from the VGG19 CNN. In comparison to the transfer learning method used in one of the previous studies,<sup>17</sup> where the CNN was pretrained on a set of 60 MR knee data volumes, our approach used convolutional blocks of a deep network trained using over 1,000,000 images. The first convolutional blocks of the deep CNNs commonly contain blob and edge detectors, which are crucial for successful object recognition. Due to the transfer learning, our U-Net did not have to redevelop operations responsible for edge extraction during the training. Additionally, we introduced a small convolutional block in front of the first pretrained block to better match the grayscale MR images, because the VGG19 CNN was originally developed for RGB images.

Nevertheless, there are several issues related to our approach. First, we developed the CNNs using a relatively small dataset of MR images. Generally, the performance

of deep learning algorithms is expected to increase with the data volume; thus, it would be better to have a large annotated dataset to train the model from scratch. However, annotating (or, in our case, outlining the ROIs) large datasets is usually time consuming and sometimes impractical; therefore, for applications, it is rather desirable to develop as efficient a model as possible using the smallest, yet most optimal dataset. A second issue is related to the applied transfer learning technique, which was developed for 2D images. Because of this, it is not straightforward to apply the proposed technique in this paper's transfer learning method to 3D cases. Another issue is that the radiologists were asked to select the best possible images for annotations. This selection was done in a strictly subjective way. The subtracted images selected for the menisci segmentation might not be optimal for other knee joints segmentation, but this requires further study.

In the future, following the study presented in Zhou et al,<sup>17</sup> we would like to develop a deep learning model for the segmentation of the whole knee anatomy. Based on this segmentation, it would be possible to calculate the quantitative MR parameters for each knee joint tissue. In several papers, the segmentation provided by the 2D U-Net was consequently processed using, for example, a 3D U-Net<sup>14,19</sup> to further improve the results. While in our study we obtained an accuracy equivalent to the inter-observer variability of 2 radiologists, it would be interesting to explore the postprocessing possibilities to further improve the results and make the segmentation more robust. Aside from developing the segmentation networks, we would also like to continue collecting data from human subjects, especially from those with mild and moderate OA, and assess the usefulness of automatically extracted MR quantitative parameters for classification of patients with different levels of OA.

## 5 | CONCLUSIONS

In this study, we presented an efficient deep learning-based approach to menisci segmentation and extraction of quantitative parameters in 3D UTE cones magnetic resonance imaging. The method, evaluated using regions of interest provided by 2 radiologists, demonstrated efficacy with respect to segmentation performance and magnetic resonance parameters determination. The proposed transfer learning-based segmentation algorithm achieved performance similar to that obtained by the radiologists. The results and techniques presented in our study may serve as an important step to providing magnetic resonance biomarkers for osteoarthritis diagnosis and monitoring.

## ORCID

Michal Byra  <https://orcid.org/0000-0002-5759-2516>

Mei Wu  <https://orcid.org/0000-0003-0952-5973>

Hyungseok Jang  <https://orcid.org/0000-0002-3597-9525>

Ya-Jun Ma  <https://orcid.org/0000-0003-0830-9232>

## REFERENCES

- Loeser RF, Goldring SR, Scanzello CR, Goldring MB. Osteoarthritis: a disease of the joint as an organ. *Arthritis Rheum.* 2012;64:1697–1707.
- Badlani JT, Borrero C, Golla S, Harner CD, Irrgang JJ. The effects of meniscus injury on the development of knee osteoarthritis: data from the Osteoarthritis Initiative. *Am J Sports Med.* 2013;41:1238–1244.
- Berthiaume M-J, Raynauld J-P, Martel-Pelletier J, et al. Meniscal tear and extrusion are strongly associated with progression of symptomatic knee osteoarthritis as assessed by quantitative magnetic resonance imaging. *Ann Rheum Dis.* 2005;64:556–563.
- Hunter DJ, Zhang YQ, Niu JB, et al. The association of meniscal pathologic changes with cartilage loss in symptomatic knee osteoarthritis. *Arthritis Rheum.* 2006;54:795–801.
- Baum T, Joseph GB, Karampinos DC, Jungmann PM, Link TM, Bauer JS. Cartilage and meniscal T2 relaxation time as non-invasive biomarker for knee osteoarthritis and cartilage repair procedures. *Osteoarthritis Cartilage.* 2013;21:1474–1484.
- Joseph GB, Baum T, Alizai H, et al. Baseline mean and heterogeneity of MR cartilage T2 are associated with morphologic degeneration of cartilage, meniscus, and bone marrow over 3 years - data from the Osteoarthritis Initiative. *Osteoarthritis Cartilage.* 2012;20:727–735.
- Chang EY, Du J, Chung CB. UTE imaging in the musculoskeletal system. *J Magn Reson Imaging.* 2015;41:870–883.
- Ma Y-J, Carl M, Searleman A, Lu X, Chang EY, Du J. 3D adiabatic T1ρ prepared ultrashort echo time cones sequence for whole knee imaging. *Magn Reson Med.* 2018;80:1429–1439.
- Ma Y-J, Zhao W, Wan L, et al. Whole knee joint T1 values measured in vivo at 3T by combined 3D ultrashort echo time cones actual flip angle and variable flip angle methods. *Magn Reson Med.* 2019;81:1634–1644.
- Bloecker K, Guerhazi A, Wirth W, et al. Correlation of semiquantitative vs quantitative MRI meniscus measures in osteoarthritic knees: results from the Osteoarthritis Initiative. *Skeletal Radiol.* 2014;43:227–232.
- Pedoi V, Majumdar S, Link TM. Segmentation of joint and musculoskeletal tissue in the study of arthritis. *MAGMA.* 2016;29:207–221.
- Litjens G, Kooi T, Bejnordi BE, et al. A survey on deep learning in medical image analysis. *Med Image Anal.* 2017;42:60–88.
- Ronneberger O, Fischer P, Brox T. U-net: convolutional networks for biomedical image segmentation. In: *International Conference on Medical Image Computing and Computer-Assisted Intervention.* 2015:234–241.
- Ambellan F, Tack A, Ehlke M, Zachow S. Automated segmentation of knee bone and cartilage combining statistical shape knowledge and convolutional neural networks: data from the Osteoarthritis Initiative. *Med Image Anal.* 2018;52:109–118.
- Liu F, Zhou Z, Jang H, Samsonov A, Zhao G, Kijowski R. Deep convolutional neural network and 3D deformable approach for tissue segmentation in musculoskeletal magnetic resonance imaging. *Magn Reson Med.* 2018;79:2379–2391.
- Prasoon A, Petersen K, Igel C, Lauze F, Dam E, Nielsen M. Deep feature learning for knee cartilage segmentation using a triplanar convolutional neural network. *Med Image Comput Comput Assist Interv.* 2013;16:246–253.
- Zhou Z, Zhao G, Kijowski R, Liu F. Deep convolutional neural network for segmentation of knee joint anatomy. *Magn Reson Med.* 2018;80:2759–2770.
- Norman B, Pedoi V, Majumdar S. Use of 2D U-Net convolutional neural networks for automated cartilage and meniscus segmentation of knee MR imaging data to determine relaxometry and morphometry. *Radiology.* 2018;288:177–185.
- Tack A, Mukhopadhyay A, Zachow S. Knee menisci segmentation using convolutional neural networks: data from the Osteoarthritis Initiative. *Osteoarthritis Cartilage.* 2018;26:680–688.
- Fripp J, Bourgeat P, Engstrom C, Ourselin S, Crozier S, Salvado O. Automated segmentation of the menisci from MR images. *IEEE Int Symp Biomed Imaging.* 2009;510–513.
- Paproki A, Engstrom C, Chandra SS, Neubert A, Fripp J, Crozier S. Automated segmentation and analysis of normal and osteoarthritic knee menisci from magnetic resonance images - data from the Osteoarthritis Initiative. *Osteoarthritis Cartilage.* 2014;22:1259–1270.
- Zhang K, Lu W, Marziliano P. The unified extreme learning machines and discriminative random fields for automatic knee cartilage and meniscus segmentation from multi-contrast MR images. *Mach Vis Appl.* 2013;24:1459–1472.
- Bolbos RI, Link TM, Ma CB, Majumdar S, Li X. T1ρ relaxation time of the meniscus and its relationship with T1ρ of adjacent cartilage in knees with acute ACL injuries at 3 T. *Osteoarthritis Cartilage.* 2009;17:12–18.
- Rauscher I, Stahl R, Cheng J, et al. Meniscal measurements of T1ρ and T2 at MR imaging in healthy subjects and patients with osteoarthritis. *Radiology.* 2008;249:591–600.
- Swanson MS, Prescott JW, Best TM, et al. Semi-automated segmentation to assess the lateral meniscus in normal and osteoarthritic knees. *Osteoarthritis Cartilage.* 2010;18:344–353.
- Du J, Carl M, Diaz E, et al. Ultrashort TE T1ρ (UTE T1ρ) imaging of the Achilles tendon and meniscus. *Magn Reson Med.* 2010;64:834–842.
- Simonyan K, Zisserman A. Very deep convolutional networks for large-scale image recognition. arXiv e-prints. 2014. <https://arxiv.org/abs/1409.1556>.
- Szegedy C, Liu W, Jia Y, et al. Going deeper with convolutions. In: *Proceedings of the IEEE Conference on Computer Vision and Pattern Recognition.* 2015:1–9.
- Deng J, Dong W, Socher R, Li L-J, Li K, Fei-Fei L. Imagenet: a large-scale hierarchical image database. In: *Proceedings of the IEEE Conference on Computer Vision and Pattern Recognition,* June 25, 2009, Miami, Florida. 2009:248–255.
- Zhou B, Khosla A, Lapedriza A, Oliva A, Torralba A. Object detectors emerge in deep scene cnns. arXiv e-prints. 2014. <https://arxiv.org/abs/1412.6856>.
- Antropova N, Huynh BQ, Giger ML. A deep feature fusion methodology for breast cancer diagnosis demonstrated on three imaging modality datasets. *Med Phys.* 2017;44:5126–5171.

32. Ros G, Stent S, Alcantarilla PF, Watanabe T. Training constrained deconvolutional networks for road scene semantic segmentation. arXiv e-prints. 2016. <https://arxiv.org/abs/1604.01545>.
33. Marquardt DW. An algorithm for least-squares estimation of non-linear parameters. *J Soc Ind Appl Math*. 1963;11:431–441.
34. Klein S, Staring M, Murphy K, Viergever MA, Pluim J. Elastix: a toolbox for intensity-based medical image registration. *IEEE Trans Med Imaging*. 2010;29:196–205.
35. Shamonin DP, Bron EE, Lelieveldt B, Smits M, Klein S, Staring M. Fast parallel image registration on CPU and GPU for diagnostic classification of Alzheimer's disease. *Front Neuroinform*. 2014;7:50.
36. Jetley S, Lord NA, Lee N, Torr PHS. Learn to pay attention. arXiv e-prints. 2018. <https://arxiv.org/abs/1804.02391>.
37. Oktay O, Schlemper J, Le Folgoc L, et al. Attention U-Net: learning where to look for the pancreas. arXiv e-prints. 2018. <https://arxiv.org/abs/1804.03999>.
38. Tajbakhsh N, Shin JY, Gurudu SR, et al. Convolutional neural networks for medical image analysis: full training or fine tuning? *IEEE Trans Med Imaging*. 2016;35:1299–1312.
39. Zheng L, Zhao Y, Wang S, Wang J, Tian Q. Good practice in CNN feature transfer. arXiv e-prints. 2016. <https://arxiv.org/abs/1604.00133>.
40. Byra M, Galperin M, Ojeda-Fournier H, et al. Breast mass classification in sonography with transfer learning using a deep convolutional neural network and color conversion. *Med Phys*. 2019;46:746–755.
41. Milletari F, Navab N, Ahmadi S-A. V-net: fully convolutional neural networks for volumetric medical image segmentation. In: Proceedings of the Fourth International Conference on 3D Vision. 2016:565–571.
42. Sudre CH, Li W, Vercauteren T, Ourselin S, Cardoso MJ. Generalised Dice overlap as a deep learning loss function for highly unbalanced segmentations. In: *Deep Learning in Medical Image Analysis and Multimodal Learning for Clinical Decision Support*. Springer; 2017:240–248.
43. Paris S, Hasinoff SW, Kautz J. Local Laplacian filters: edge-aware image processing with a Laplacian Pyramid. *Commun ACM*. 2015;58:81–91.
44. Kingma D, Ba J. Adam: a method for stochastic optimization. arXiv e-prints. 2014. <https://arxiv.org/abs/1412.6980>.
45. Glorot X, Bengio Y. Understanding the difficulty of training deep feedforward neural networks. In: Proceedings of the Thirteenth International Conference on Artificial Intelligence and Statistics, May 13–15, 2010, Sardinia, Italy, 2010:249–256.
46. Abadi M, Barham P, Chen J, et al. TensorFlow: a system for large-scale machine learning. In: *USENIX Symposium on Operating Systems Design and Implementation*, November 2–4, 2016, Savannah, Georgia, 2016:265–283.
47. Fawcett T. An introduction to ROC analysis. *Pattern Recognit Lett*. 2006;27:861–874.
48. Heimann T, Morrison BJ, Styner MA, Niethammer M, Warfield S. Segmentation of knee images: a grand challenge. <http://www.ski10.org/ski10.pdf>. Accessed August 11, 2019.
49. Maier-Hein L, Eisenmann M, Reinke A, et al. Why rankings of biomedical image analysis competitions should be interpreted with care. *Nat Commun*. 2018;9:5217.

**How to cite this article:** Byra M, Wu M, Zhang X, et al. Knee menisci segmentation and relaxometry of 3D ultrashort echo time cones MR imaging using attention U-Net with transfer learning. *Magn Reson Med*. 2019;00:1–14. <https://doi.org/10.1002/mrm.27969>