

Knowledge Networks as Channels and Conduits: The Effects of Spillovers in the Boston Biotechnology Community*

[Word count 9412, inclusive]

FORTHCOMING, *Organization Science*

FINAL VERSION – 12/01/03

Jason Owen-Smith

jdos@umich.edu

Department of Sociology

1225 S. University Ave.

Ann Arbor, MI 48104-2590

Walter W. Powell

woodyp@stanford.edu

509 Ceras Bld.

Stanford University

Stanford, CA 94305-3084

Abstract:

We contend that two important, non-relational, features of formal inter-organizational networks -- geographic propinquity and organizational form -- fundamentally alter the flow of information through a network. Within regional economies, contractual linkages among physically proximate organizations represent relatively transparent channels for information transfer as they are embedded in an ecology rich in informal and labor market transmission mechanisms. Similarly, we argue that the spillovers that result from proprietary alliances are a function of the institutional commitments and practices of members of the network. When the dominant nodes in an innovation network are committed to open regimes of information disclosure, the entire structure is characterized by less tightly monitored ties. The relative accessibility of knowledge transferred through contractual linkages to organizations, which are not a party to specific ties, determines whether innovation benefits accrue broadly to membership in a coherent network component or narrowly to centrality. We draw upon novel network visualization methods and conditional fixed effects negative binomial regressions to test these arguments for a sample of human therapeutic biotechnology firms located in the Boston metropolitan area.

Keywords: knowledge networks, economic geography, spillovers, biotechnology, patenting

We acknowledge research support from the National Science Foundation (Grant #0097970), the Merck Foundation (EPRIS Project), and the Hewlett Foundation through a grant to the Santa Fe Institute. This paper has been improved by thoughtful comments from the editor and from three very helpful anonymous reviewers. Bruce Kogut, Ken Koput, Mark Mizruchi, Richard Nelson, John Padgett, and Kjersten Bunker-Whittington also provided excellent feedback. We have benefited from comments from audience members at seminars given at the Department of Management Science and Engineering at Stanford University, the conference on Science as an Institution at the University of Siena, the National Bureau of Economic Research's productivity workshop, the 2002 Sunbelt meetings, and the Economic Sociology Seminar and the Center for Research on Electronic Work seminar, both at the University of Michigan. All errors and omissions are, of course, our own.

Introduction

A central tenet of the new economic sociology is that networks are both the wellsprings and the 'plumbing' of markets (White 1981, 2002; Powell 1990; Burt 1992; Podolny, 2002). Whether operationalized in terms of informal ties among individuals (Granovetter 1985; Uzzi 1990), interlocking affiliations among corporations (Mizruchi 1992; Davis, Baker, and Yoo 2003), or formal, contractually defined, strategic alliances (Eisenhardt and Schoonhoven 1994; Powell, Koput, and Smith-Doerr 1996), networks are an essential component of markets because they channel and direct flows of information and resources from position to position within a social structure.

The conceptualization of networks as “pipes” underscores the strategic benefits that accrue to well-situated individuals, organizations, and collectivities because of their position at the confluence of information and resource flows. This conception has proven highly fertile in explaining a wide range of organizational, economic, and social phenomena. Nevertheless, limited attention has been paid thus far to how important non-structural features -- such as the characteristics of the organizations that represent nodes in a network, geographic location, or the institutional underpinnings of the larger structure -- alter the character of information flows.

We begin with a consideration of the varied ways in which formal contractual alliances might be understood to channel information and resource flows between organizations, arguing that these linkages can represent either 'open' channels or more proprietary, 'closed' conduits. We then turn to a discussion of two non-structural considerations that might affect the accessibility of formal contractual pipelines. We draw upon economic geography to link a more unfettered conception of information flow to

the well-established benefits of regional industrial agglomeration (Romer, 1986; Krugman, 1991; Anselin, Varga, and Acs 1997). We turn next to organizational theory, and the sociology and economics of science, to argue that the characteristics of the dominant nodes in a network can alter the flow of information throughout the entire structure. We contend that integrating considerations of the geographic propinquity of network structures and the institutional demography of network nodes offers new insights into the relationship between social structural position and firm-level outcomes. Moreover, this conception contributes to the development of an organizational network theory that is sensitive to diverse meanings of location and to the varied institutional arrangements that typify complex organizational fields.

Networks as both Channels *and* Conduits

Social connections among individuals and the various linkages among organizations can be conceptualized in two general terms. We posit a pair of logical possibilities. The first sees linkages as channels that diffusely and imperfectly direct transfers between nodes, facilitating information spillovers (and other externalities) that benefit both loosely connected and centrally positioned organizations. An alternative conception of pipelines represents closed conduits, characterized by legal arrangements (e.g., non-disclosure agreements and exclusive licensing contracts that transfer intellectual property rights) designed to ensure that only the specific parties to a given connection benefit from the information that is exchanged. While the former interpretation suggests that ‘weak’ connections among participants in a network may offer returns to its members in terms of spillovers from network channels, the latter understanding implies that centrality and ‘strong’ connections involving tighter, more

proprietary conduits are the primary sources of competitive advantage derived from networks. The literature on inter-organizational linkages has, to date, emphasized the latter view over the former.

Organizations collaborate within their own industries, as well as across sectors, for both strategic and social purposes (Eisenhardt and Schoonhoven 1996). Such partnerships represent the 'plumbing' of the market, and the strategic benefits of location in dense alliance networks have been well documented. Powell, Koput and Smith-Doerr (1996) characterize such diverse industry networks in biotechnology as the 'locus of innovation,' emphasizing the positive benefits of increased rates of learning and access to knowledge on a rapidly developing research frontier. To test ideas about organizational learning, many researchers have focused on the relationship between strategic alliance networks and innovative outputs in the form of patents.

Hagedoorn and Schankenraad (1994) demonstrate a positive relationship between the formation of technology partnerships and firm-level innovation. Shan, Walker, & Kogut (1994; Walker, Kogut, & Shan, 1997) provide evidence that strategic alliance networks increase patent rates for biotechnology firms. Stuart (2000) also finds that technology-based alliances predict innovation rates in the semiconductor industry, but demonstrates that the effects of those affiliations depend strongly on partner characteristics. Similarly, Ahuja (2000) draws on a variety of network indicators to examine the relationship between position in strategic alliance networks in the international chemical industry and patenting outcomes, finding a beneficial effect of direct network connections on innovative outputs.

These works largely spotlight the effects of technology-based network ties among competitor firms in the same industry. Research on innovation in biotechnology, which attends much more to the diverse set of institutions engaged in basic research and product development, has assessed the implication of ties to diverse types of partners, particularly universities and research institutes (Powell 1996; Owen-Smith et. al. 2002). While reiterating the importance of connections among firms, this line of research offers somewhat mixed findings on the role that ties among different types of organizations play in the biotechnology industry. Shan, Walker and Kogut (1994), for instance, find a positive effect of firm-to-firm alliances on biotech patenting but not a significant effect of R&D agreements with universities. George, Zahra and Wood (2002), however, observe that firms with ties to universities produce more patents, and have lower R&D costs than those lacking such ties. Similarly, Arora and Gambardella (1990) demonstrate that pharmaceutical ties to small biotechnology firms and universities represent complementary strategies for innovation.

The literature on networks and innovation emphasizes the strategic benefits of formal connections conceptualized a focused pipelines, while underplaying the role of ties to non-firm alters and the social aspects of alliances. Such collective benefits have been found for many other types of networks, however (Powell 1990). Buyer-supplier networks in industrial districts in the 'Third Italy' (Piore and Sabel 1984) and in the Manhattan garment industry (Uzzi 1996, 1997) have been shown to offer benefits to connected partners by channeling information and resources and by locating members in a dense communal web of overlapping affiliations and obligations. In these settings,

inclusion in a collectivity whose boundaries are defined by both network connections and geographic propinquity is crucial to organizational performance.

In a similar vein, work examining board-of-director interlocks among firms underlines the extent to which such ties contribute to the development and maintenance of a corporate elite (a geographically dispersed, largely closed and self-replicating community), where membership speeds the transmission of novel management practices (Davis & Greve 1997) and similar patterns of corporate political involvement (Mizruchi, 1992). Moreover, recent examinations of cohesiveness as a key indicator of network embeddedness (Moody and White, 2003) demonstrate that in a number of arenas, membership in coherent network components generates benefits net of more directly specified measures of centrality. Across these cases, connections among firms are conceptualized as offering both positional and membership benefits. We contend that formal alliances among diverse organizations in a science-based industry may convey innovation benefits, either as diffuse channels for information spillovers or as proprietary pathways for directed information and resource transfer between partners.

More specifically, when strategic alliances represent unfettered channels for information transfer, membership in a loosely connected but coherent network topology imparts significant advantages to firms in knowledge-intensive industries. For example, Murray (2002) emphasizes joint authorship, the movement of students and post-doctoral fellows, and positions on scientific advisory boards as less structured mechanisms of knowledge transfer. She points to the sharing of resources and equipment and collective access to a larger scientific group as key features of knowledge communities. In contrast, secure, tight conduits that transfer information in a focused manner between parties yield

innovation benefits only to those organizations that are centrally positioned in a network structure. Put simply, the network conduits view focuses on point-to-point transmission in which benefits are garnered only by the nodes at the end of the pipes. But when pipelines are 'leaky' -- either due to membership in a regional economy or because of the normative practices of key members of the network -- they function more like sprinklers, irrigating the broader community. This irrigation metaphor, drawn specifically from work in economic anthropology on cooperative agricultural practices (Lansing, 1991; Scarborough, Schoenfelder, & Lansing, 1999) underscores the collective benefits derived from membership in a community rich in relational linkages.

Economic geography and institutional demography

Both the geographic location of organizations connected by formal ties and the institutional characteristics of nodes in a network may alter the character of information flows. Proximity is commonly linked to a variety of information spillovers. In addition, organizations vary in the extent to which they adhere to the institutional and legal rules designed to prevent the diffusion of information beyond the parties to a formal tie.

The evidence for geographically concentrated knowledge flows in research-intensive industries is compelling. Studies drawing on ethnographic analysis (Saxenian 1994) and patent citation data have demonstrated that: (1) knowledge spills across organizations more readily when they are co-located (Jaffe et. al 1993; Almeida, Dokko, and Rosenkopf, 2000); (2) the size and mobility of the science and engineering labor pool in a region increases localized spillovers (Almeida and Kogut 1999); and (3) strategic alliances among firms increase the likelihood of such spillovers (Almeida et. al. 2000).

Research on the biotechnology industry has documented that the geographic co-location of firms is a function of access to scientific talent and the skills of 'star' scientists who are active in both academic and commercial research communities (Audretsch and Stephan 1996; Zucker, Darby, and Brewer 1996). In high technology regions, the secrets of industry may not be floating freely in the air (Marshall 1920), but they are situated in informal communities of practice that constitute a local technology labor market (Brown and Duguid 1991).

In sum, we argue that formal ties among regionally agglomerated organizations are important in accounting for innovation to the extent that they signal membership in a local technology community. Such membership offers firms access to information transmitted through informal network channels in the region, while raising the firm's visibility in competitive local labor markets for technically trained employees. Conceptualizing formal ties as a means to access informal communities emphasizes the public character of relationships and illuminates the importance of community membership above and beyond the specifics of structural position. To formalize these ideas, we suggest:

Proposition 1: Membership in a geographically co-located network will positively effect innovation, but centrality in the same network will have no effect.

Proposition 2: Centrality in a geographically dispersed network will positively effect innovation, but membership per se will have no effect.

Another potential source of network openness lies in the dependence of regional economies, and high technology industries more generally, on diverse organizational forms. Indeed, the strength and robustness of U.S. high technology regions lies in their joint reliance upon the contributions of both public and private research organizations

(Owen-Smith, Riccaboni, Pammolli, and Powell, 2002). Even when individual alliances may be sealed by a partner's commitment to proprietary norms, the dominance of the larger network by organizations that pursue open science can render the overall structure more accessible. When public research organizations anchor networks, even those concerned with commercial applications, the systems manifest greater spillovers.

Public research organizations (PROs), such as universities and nonprofit institutes, increasingly conduct research that is both advanced scientifically and immediately valuable to industry. This class of organizations differs from research-intensive firms on two key dimensions. Institutional differences between PROs and for-profit organizations stem from: (1) their disparate approaches to rules for the dissemination and use of scientific findings (Dasgupta and David 1987, 1994; Owen-Smith 2003), and (2) sharply divergent selection environments.

Two related strands of thought offer insights into the effects of these distinctive institutional regimes. First, Nelson (1981, 1986) emphasizes the key role that organizational diversity plays in the development of knowledge on a research frontier, emphasizing the importance of public research institutions to the generation of innovation. New knowledge flows out of universities much more readily than it does from commercial organizations (Jaffe et. al. 1993). Similarly, sectors in which non-commercial organizations are prominent in early stage research activities promote more open technological trajectories (Dosi 1982). Some high-technology sectors – most notably biotechnology – owe their rapid emergence to the robustness and expansiveness that PROs add to networks (Powell 1996).

A second feature of PROs is their durability and resilience. Public entities, such as universities or government institutes, do not routinely fail or merge. Thus, they contribute to the stability of highly volatile technological fields. In contrast to firms, which are subject to potentially strong market pressures and experience liabilities of newness and obsolescence, PROs add a presence that is focused on longer-term criteria of evaluation. PROs also promote information transmission because they adhere to the norms of open information disclosure characteristic of public science. The implication of these two lines of argument is that networks centered on PROs should yield greater benefits to general community membership than to specific structural position. Consequently, we propose:

Proposition 3: In networks dominated by PROs, membership will positively effect innovation, but centrality will have no effect.

Proposition 4: In networks dominated by commercial entities, centrality will positively effect innovation, but membership per se will have no effect.

We turn to an examination of an institutionally diverse biotechnology region, Boston, to examine patterns of information flow.

Propinquity and Centrality in Biotechnology

The biotechnology industry exemplifies many of the general features of science-based sectors. Biotechnology firms in the U.S. and Europe are clustered in a small number of geographic regions and are strongly dependent upon public research organizations, such as universities, for skilled labor and novel scientific competencies (Audretsch & Stephan, 1996; Anselin, Varga, and Acs 1997; Zucker, Darby, & Brewer 1998). These firms are embedded in multiple networks of strategic alliances and gain competitive advantage from continuous scientific and technical innovation (Powell et. al.

1996). Access to new knowledge and capabilities in this field occurs both via localized information spillovers and through diverse strategic alliance networks that are international in scope.

Consequently, geographic propinquity and network centrality represent substantively different locations in a field where the ability to innovate determines survival. One goal of this paper is to bridge the gap between geographic and network explanations for innovation rates of biotechnology firms. An important aspect of this question involves the diversity of organizational forms located in different regions, thus our second purpose is to examine the relationship between the institutional demography of nodes and network effects on innovation.

Biotechnology is a field where all the relevant capabilities are seldom found under a single organizational roof (Powell & Brantley, 1992). The field had its origins in university labs, where research was supported by decades of substantial government investment in R&D. As the field developed, universities, nonprofit research centers, major research hospitals, and start-up firms all had a hand in moving research from the lab into clinical development. On the financing side, venture capital firms bankrolled many of the small firms, and large, multinational corporations later joined in as they came to see the merits of new, more directed methods of drug discovery (Henderson & Cockburn, 1996; Malerba & Orsenigo 2001). Until very recently, we did not find all these types of organizations located in physical proximity, so the maturation of the industry involved reaching out across regional clusters to access diverse resources.

These varied participants represent more than novel combinations of organizations, however. We suspect that the combination of the responsiveness of private

firms and the dedicated resources of public organizations is crucial to the generation of novel technologies. To examine this idea, we analyze patenting by dedicated human therapeutic and diagnostic biotechnology firms (DBFs) located in the Boston metropolitan area, an important regional cluster for the U.S. biotechnology industry. We first introduce the Boston region – highlighting the scale of biotechnology activity and the diversity of organizational forms and selection environments in the area. We examine the network ecology of the region as a means to test our general propositions about the relationship between propinquity, institutional diversity, network position and innovation.

Why Boston?

We examine the relationship between local and non-local network position and patent volume for DBFs located in the Boston metropolitan area, which is home to one of the largest concentrations of biotechnology firms in the world (Stuart & Sorenson, 2003). In addition to DBFs, however, Boston boasts a rich population of public research organizations, including public and private universities (e.g. Harvard, MIT, and the University of Massachusetts), independent research institutes (e.g. the Dana Farber Cancer Institute), and research hospitals (e.g. Massachusetts General Hospital). Finally, numerous venture capital (VC) firms are also located in the Boston region.¹

¹ We follow *Pratt's Guide to Venture Capital Sources* and focus on venture companies that are oriented toward high-risk, high-involvement, early-stage investment in entrepreneurial firms. *Pratt's* does not include angel investors, pension funds, or university technology offices in the category of VCs. In our database on venture capital, we have measures of company age, capitalization, number of offices and whether the firm primarily invests its founder's own money or other investors' money. In previous work (Powell, Koput, Bowie, & Smith-Doerr, 2002), we documented the dramatic growth of venture capital disbursements to biotechnology companies in the 1990s. In Boston, the great bulk of VC financing was local until 1996, when external financing from Bay Area VCs expands. Some of these VCs opened branch offices in Boston, but given their (relatively) late arrival on the scene, we code their location as outside of Boston. Researchers working on venture capital financing have yet to sort out the allocation of decision making responsibilities between home offices and branch locations.

The joint presence of a sizeable number of DBFs, PROs, and VCs makes Boston the most organizationally diverse regional cluster in the U.S. biotechnology industry. The considerable heterogeneity of organizational forms in Boston (public,² nonprofit, private; large and small) coincides with a diverse set of selection environments. By diversity we mean variation in both organizational form and mission. These varying approaches to innovation and information dissemination are linked, so that they constitute a local organizational field or knowledge community. Boston is a strong candidate for a geographic region where information could diffuse widely and informally through a thriving technological community and labor market.

At the same time, the institutional diversity of the organizations that populate this region offers the possibility for an examination of the effects node demography has on innovation. Because PROs are primarily focused on non-proprietary academic research, they are ‘leakier’ organizations than firms. Thus their diversity and number may increase spillovers within a region by rendering even formal network ties more diffuse. Boston area venture capitalists are also more likely to invest locally than are VC firms in the Bay Area, the other populous biotechnology cluster (Powell, et. al. 2002). This type of ecology produces an environment where we expect firms to derive innovation benefits from membership in a weakly connected, but coherent network ‘community.’

Two possibilities are immediately apparent. First, formal network connections among co-located organizations may be unlocked by the broader externalities that accompany propinquity. Alternatively, partnerships may act as channels that direct

² Both government agencies (e.g. the National Institutes of Health) and universities might be considered ‘public.’ Because of their different funding roles however, we separate government institutes from universities, nonprofit research institutes and hospitals by assigning such agencies to the category ‘Government.’ No federal research institutes are located in the Boston region.

information flows while emitting spillovers due to a community's dominance by organizations dedicated to a more academic, or public research mission. We first describe the data set and sources that afford a test of these alternative propositions, then turn to network visualization methods to portray the evolution of the Boston network, mapping its transition from a strong anchor in PROs to a more 'proprietary' network dominated by commercially oriented nodes. This transition, we argue, allows us to discriminate between two possible sources of 'openness' in formal network pipelines: geographic propinquity and institutional demography.

Inter-Organizational Networks in Biotechnology

Data Sources. Our primary explanatory data are drawn from a relational dataset of formal network connections involving 482 dedicated biotechnology firms for the period 1988-1999.³ The data on firms and inter-organizational arrangements were coded from *BioScan*, an industry publication that reports information on firms and the formal arrangements in which they are involved. The organizational data include firm age, size, public status, and (where applicable) reasons for exit. Tie data allow us to calculate measures of network experience, diversity, and centrality, and to classify individual ties by the type of business activity (R&D, Finance, Commercialization, Licensing) they entail.⁴ These data represent yearly ‘snapshots’ of the formal network that constitutes the ‘locus of innovation’ in biotechnology (Powell et. al. 1996). Our dependent variable, a count of patents assigned to those corporations, was developed using the United States Patent Office's online database.

Defining the networks. Our focus is on the geographic and organizational conditions affecting information flows through formal networks. Our database enables us to develop two different networks.⁵ The first, which we dub ‘Boston,’ includes only organizations located in the region and the ties among them. In this group are 58 DBFs, 19 PROs, and 37 VC firms. We observe 201 formal contractual relationships, including R&D partnerships, licensing deals, commercialization and marketing arrangements, and investment ties among these 114 organizations over the period 1988-1999.

³ We define DBFs as independently held, profit seeking firms involved in human therapeutic and diagnostic applications of biotechnology.

⁴ Our data draws upon the April edition of *BioScan*, in which new information is added for each calendar year.

⁵ For further details on the database from which these data are derived, see Powell et. al. 1996: 124-129; Powell et. al. 2004.

The second network, which we label ‘Boston +,’ comprises all organizations in any locations that have a network tie to a Boston-based organization. The Boston + network, then, places Boston-area DBFs in a global network without reference to the physical location of their partners. The Boston + network includes 212 DBFs, 96 PROs, 240 VC firms, 24 Government agencies, and 168 Pharmaceutical/Chemical/Healthcare companies.⁶ We observe 1,559 ties among these 740 organizations during the period 1988-1999. This latter network includes all organizations in the Boston region, but excludes the ties that make up the Boston network.

We argue that formal ties among Boston organizations are important to explaining innovation primarily to the extent that they enable access to informal spillovers within a regional ecology. Such membership offers, for instance, access to information transmitted through local labor markets for Ph.D. life scientists. Thus formal ties are more open than their portrayal as pipelines suggests. The suggestion that inter-organizational alliances sometimes function more as channels than as conduits represents a departure from approaches to innovation networks that rely on measures of direct and indirect linkages among organizations.

Ahuja (2000) demonstrates that indirect connections among chemical firms positively effect innovation, though the effect is moderated by number of direct ties. The logic underlying Ahuja’s finding is straightforward, relating the number of organizations (and thus network pipelines) that a focal node can access to the variety of

⁶ The Boston + network is more diverse in terms of organizational forms than the Boston network because neither government institutes nor large pharmaceutical/chemical/healthcare companies (such as Merck or Eli Lilly) were located in the Boston metropolitan area during the time period covered by our dataset. This remains true for government laboratories, but large pharmaceutical companies such as Novartis have recently announced plans to relocate R&D facilities in the Boston region in hopes of taking advantage of precisely the community effects we postulate above (Palmer 2002). While the pattern is changing, very few of either of these forms of organizations are located in *any* of the established biotechnology clusters in the U.S.

information it can gather. In this view, network reach carries innovation benefits by enabling firms to access information that their partners have gathered through focused network connections. These benefits, however, are greater for firms that are themselves party to relatively few alliances. Research emphasizing the importance of such indirect connections is predicated on knowledge spillovers from nodes (in this case, information transferred by a tie between two other organizations is accessible to ego via its own partnership).

Local membership, trans-local centrality. Despite the established importance of network reach, our emphasis on the signaling effects of formal ties adds an additional dimension to analyses of information transmission through networks. We contend that informal regional networks and open institutional regimes alter the extent to which formal connections direct and restrict information flows. While the nodes in a network transmit information at one remove, more transparent pipelines distribute information both to partners and to other organizations that are not party to the alliance. The primary analytic challenge for this view is to discern the minimal level of affiliation that might convey access to such spillovers. We focus our empirical attention on membership in the largest weakly connected component in a given network. This structure, the ‘main component,’ represents membership in a loosely linked but coherent community. Such membership, we contend, offers a channel to the widest available range of information flows (spillovers from ties) while increasing a firm’s visibility in local labor markets and in informal networks among scientists. To the extent that regional agglomeration effects open network ties, membership in the main component of the Boston network will increase a firm’s ability to tap into information flows. Following proposition one

concerning the salutary effect of membership in a geographically co-located network, the specific corollary for the Boston network is: connection to the main component will positively effect the volume of patents successfully prosecuted by local DBFs while centrality will have no effect.

In contrast, we expect that informal channels for information transfer will be much less salient in larger, geographically dispersed networks. Where the partners in a relationship are physically distant, weaker informal networks and greater monitoring difficulties will close formal contractual ties limiting the extent to which information might be accessible to the surrounding community. Under these conditions, position in the formal plumbing of the market, rather than membership in a weakly connected community, will yield information benefits. We thus take the analogy relating networks to pipes carrying information and resources seriously, arguing that position in geographically dispersed networks will increase firm-level innovation. Where physical distance limits the openness of network avenues, centrality at the convergence of multiple, tightly bounded conduits will enable access to knowledge transmitted directly from partner to partner. Centrality makes organizations an obligatory passage point for the information flowing through a network structure. Under these conditions, membership confronts a firm with a web of opaque linkages it has few means to tap. Thus, the formalization of proposition two suggests that centrality in the more dispersed Boston + network will have a positive effect on patent volume while main component membership will have no effect.

Our argument to this points hinges upon the differential role that connections to a weak component play in networks that vary by propinquity. Proximity, however, is only

one possible factor in network accessibility. We have also argued that the institutional underpinnings of a network, that is, the extent to which it is dominated by divergent organizational forms, will alter the role that alliances play in innovation. In particular, we contend that networks dominated by public research organizations will manifest innovation effects characterized more by membership than by position. Due to their commitment to the norms of 'open' science, public sector organizations weaken the contractual strictures that close formal alliances and thus contribute to the irrigation of the larger community. To further develop this line of argument, we provide visualizations of the Boston and Boston + networks.⁷ These visualizations reveal differences across location, and also demonstrate that the evolution of the Boston network is well suited to an analytic approach designed to partial out geographic and organizational sources of network openness.

Images of the Boston networks. Figure 1 presents a series of images of the Boston network in 1988. The shape of nodes in the network represents organizational type -- triangles represent PROs, circles indicate DBFs, squares reflect the position of pharmaceutical companies and governmental agencies are characterized by brown triangles. Red nodes are organizations located in Boston, gray and brown nodes are located outside the region. The color of ties reflects the type of activity they involve -- red=R&D, green=financial, blue=commercialization, and magenta=licensing.

⁷ We use Pajek, a freeware program developed by Vladimir Batagelj and Andrej Mrvar, to develop meaningful and replicable visual representations of these two networks. Pajek implements two minimum-energy, or spring-embedded, network drawing algorithms based on graph theoretic conceptions of distance and the physical theory of random fields (Guyon 1995). We draw on these two algorithms (Kamada & Kawai 1989; Fruchterman & Reingold 1991) to create images that position nodes by appeal to the overall pattern of connections in the network. These images locate isolates on the periphery of the image while situating more connected nodes centrally. For more information on the algorithms or their use for visualization, see Owen-Smith et. al. 2002; Powell, White, Koput and Owen-Smith 2004, and <http://vlado.fmf.uni-lj.si/pub/networks/pajek>.

[Figure 1 here]

Note several interesting features of Figure 1. First consider the Boston network at the upper left. In 1988 this network is relatively sparse with the bulk of organizations isolated from the network of formal relationships.⁸ The ties that do exist, though, form a dominant weakly connected network component.⁹ More interestingly, note the critical role that PROs (triangles) play in connecting the main component of the network and the relative absence of VC firms (there are few squares and only one is connected even peripherally to the main network corridor). Six public research organizations (MIT, Boston University, Tufts, Harvard, the Dana Farber Cancer Center, Massachusetts General Hospital, and the New England Medical Center) appear in the most connected cluster of organizations. In 1988, then, the Boston biotechnology community is only sparsely connected internally by formal collaborations. While the network contains nearly 43% of active Boston-area DBFs, the main component is heavily dependent for its cohesiveness upon key public research organizations.¹⁰ Removing these organizations from the network results in the complete collapse of the main component.

Figure 2 represents the Boston + network in 1988. Notice first that this network is both larger and much more organizationally diverse than the Boston network, due to the inclusion of government agencies (represented by brown triangles) and large pharmaceutical companies (represented by gray diamonds). The complete Boston + network in the upper left quadrant of Figure 2 is also strikingly different visually. While

⁸ Isolates are placed at the periphery by the drawing algorithms we employ.

⁹ In every year for which we have data, both the Boston and Boston + networks are characterized by a large network component of this sort.

¹⁰ Recent work on the development of strategic alliance ties and their role in innovation has emphasized the importance of more cohesive networks as opposed to networks rich in structural holes (Walker, Kogut and Shan 1997; Ahuja 2000). As Ahuja frames the argument, ego networks rich in structural holes negatively effect patenting because such networks tend to reduce trust, hindering the free flow of information and limiting network-channeled spillovers.

the Boston-only network is a sparse corridor, strongly reliant upon PROs for cohesiveness, the Boston + network is dominated by hub and spoke configurations where otherwise isolated VCs and large pharmaceuticals connect to individual Boston-area DBFs. The main component of the network contains more than 57% of Boston biotech companies. More firms in the area are reachable through trans-local network connections than through local ties. These external linkages offer a variety of benefits, including access to capital, approaches and solutions to problems different from those used locally, and downstream support in new product development.

[Figure 2 here]

The great majority (67%) of the 182 organizations connected to this component have only one tie. In order to visually explore the cohesiveness of this network, we remove those organizations. The resulting image is more densely and redundantly bonded than the Boston structure. Note that this network is dependent for its cohesiveness on two distinct types of organizations. In order to disconnect this component, *both* Boston-area PROs *and* external large corporations must be removed from the network. Removing only one type of organization (we remove PROs in the final call-out of Figure 2) shrinks the main component somewhat, but does so without disconnecting any Boston DBFs from the core of the network.

Figures 1 and 2 suggest that, early in its development, the Boston biotechnology community was weakly linked with less than half of all local DBFs reachable through network channels. The early coherence of this regional network stemmed from the active participation of local public research organizations. Extending the network to include physically distant partners and, thus, greater organizational diversity, highlights the

extent to which venture capital firms and large companies from outside the region reach in and attach to Boston-area biotechs. These outside ties also altered the composition of the main component, reducing its structural dependence upon local research organizations. Nevertheless, this increased network robustness may well have come at the expense of open information flow. Large pharmaceutical companies and research universities put scientific findings and intellectual property to very different uses.

The evolutionary pattern in which for-profit technological progress springs from public sector roots proposed by Nelson (1981, 1986) appears to hold for the Boston network. Consider Figure 3, which presents two simple descriptive statistics for the Boston and Boston + main components. Figure 3 represents (1) the percentage of ties in each component that connect DBFs to PROs in a given year, and (2) the percentage of Boston area biotech firms that are members of the main component in each year.

[Figure 3 Here]

This visualization suggests a qualitative change in the Boston network's level of dependence upon ties involving public research organizations across the period covered by the data, but implies no such transition for the Boston + network. The shifts reflected in Figure 3 capture an important transition in the institutional foundations of the Boston biotechnology community, highlighting the growing role of for-profit organizational forms in the local community. As a point of comparison, Figure 4 reprises Figure 1 to present a series of minimum-energy representations of the Boston network in 1998.¹¹

[Figure 4 here]

¹¹ We do not present a visualization of the Boston + network in 1998 because change in this network from 1988 to 1998 represents quantitative growth in the main component, but not a qualitative shift in its demography.

By 1998 more than 71% of Boston DBFs were connected to this component. More importantly, the network itself has undergone a marked change as local biotech firms began working directly with one another, rather than forming indirect ‘chains’ through shared connections to PROs. Local VC firms are now much more active in the network, which is notably apparent in the portion of the corridor to the right of MIT. PROs (particularly MIT, BU, Harvard, and Brigham and Women’s Hospital) still play an important role in the network in 1998, but their dominance is decreasing, as evidenced by the image of the component with PROs removed.

Consider the final frame of Figure 4, which illustrates that nearly 30% of Boston DBFs remain connected in a component that does not rely on public organizations. Indeed, the growth of biotech-to-biotech ties and the increasing support of local VCs suggest that Boston is undergoing a transition from its early dependence upon PROs to a more market-oriented regime where small science-based firms play a connective role similar to the ones held by large companies in the trans-local network.

This modification occurs within the local network but no similar alteration is apparent trans-locally. This qualitative shift in the node demography of the Boston network offers the opportunity to test multiple sources of network openness. If PRO-based networks are more open than those dominated by proprietary organizations, then we expect (following propositions two and three) that membership in the Boston main component will positively affect patenting, while a central position in the Boston + network will positively influence innovation. If PRO dominance maintains the openness of formal network connections, however, then the growing importance of local DBFs and VCs will be reflected in more closed connections. Such closure will limit spillovers in

the network, curtail membership effects on innovation, and increase the effect of centrality. Thus, the application of proposition three for Boston suggests that: as a network's reliance on firms increases, centrality in the network will have a positive effect on patent volume.

If, on the other hand, propinquity drives the level of spillovers expected in a formal alliance network, regardless of institutional features, then the Boston network's changing levels of reliance upon PROs should have no effect upon the structure's openness. Hence we expect no change in the effect of local centrality upon innovation and, following proposition four, we contend that: As the Boston network's reliance on firms increases, centrality in the network will have no effect on patent volume.

We turn to a conditional-fixed-effects negative binomial regression of an 11-year pooled cross-section of firm-level patent data for the 58 Boston-area DBFs to test these hypotheses.

Models & Methods

Network Variables.

Independent variables. Several network measures derived from the Boston and Boston + networks provide the independent variables for this analysis. The first, which we call *membership*, is a dummy variable set to one if a firm has at least one tie to the largest weakly connected component of the network in a given year. This variable operationalizes our conception of membership in a loosely linked, coherent community. We calculate this measure independently for both the Boston and the Boston + networks.

Our second variable, *position*, is an indicator of network centrality based on Freeman's (1977, 1979) measure of betweenness, which captures the extent to which firms

sit astride network pathways between other organizations.¹² Betweenness centrality, then, indicates a firm's ability to absorb (or interrupt) information flows through tightly sealed network pipes. We calculate betweenness for both the Boston and Boston + networks. In the latter case, the measure is calculated on a geographically dispersed network that excludes ties among Boston area organizations. Finally, we include a multiplicative interaction between Boston area betweenness and a time period dummy variable to indicate the differential effects of centrality in a network anchored by PROs (time period=0) and by firms (time period=1).

Control variables. We also include a variety of organizational and network control variables. Firm level controls include a dummy variable indicating whether a company is publicly traded in a given year, age and a quadratic age term in years, and a variable measuring firm size (operationalized as the log of the number of employees). Network controls are designed to clarify the effects of membership and centrality. We include two additional network measures that we expect to effect firm patenting along with their multiplicative interaction. First, *Boston R&D Ties: PRO* is a simple count of research and development ties connecting Boston DBFs and PROs in a given year.¹³ Similarly, *Ties to NIH complex* is simply the number of ties connecting Boston firms to the National Institutes of Health and its sub-agencies in Bethesda, Maryland. All models are estimated in a conditional fixed effects framework with firm and year effects to control

¹² We use betweenness centrality rather than degree centrality so we can take seriously the importance of indirect pathways for information flows (Ahuja 2000). In unreported sensitivity analyses we find that the effects of degree and betweenness measures are qualitatively the same. Despite the availability of more complex, weighted, centrality measures such as information or flow centrality, we choose betweenness for its ready interpretability. Biases may be introduced as firms at the center of small stars, unconnected to the main component will have higher betweenness scores. Such biases work against our arguments about the relative importance of membership and position, however. We thank Phil Bonacich for a conversation reminding us of the benefits of simplicity in network measures.

¹³ We use R&D ties to minimize collinearity among network measures for Boston. Such ties also represent the most intensive involvement of for-profit organizational forms in non-proprietary research.

for unobserved heterogeneity across organizations and time. Table 1 defines our variables and relevant interaction terms while appendix table 1 presents descriptive statistics and a correlation matrix.

[Table 1 here]

Model specification. We model counts of patents by application date in an 11 year pooled cross-section for a panel of 58 DBFs located in the Boston metro area employing a conditional fixed-effects negative binomial specification (Hausman, Hall, & Griliches, 1984; Cameron & Tivendi, 1998) to correct for over-dispersion in patent counts.¹⁴ Such models also control for unobserved heterogeneity by estimating effects using only within firm variation. Thus, these models drop firms with no year-to-year variation in patent rates.

Results.

Table two reports findings from a series of regressions that test hypotheses 1-4. Model six is best fitting.

Local membership, non-local position. Our first two hypotheses address the differential role formal network ties play within and outside an established high-tech region.

Hypothesis one, that connection to the Boston area main component positively effects patenting, finds support in all models. The second component of the hypothesis, that local position will have no effect, finds support only in models that do not include time period interactions suggesting that institutional and propinquity effects may be interdependent.

¹⁴ Using application date rather than issue date is common practice in literatures relating to patents as it represents the best measure of the time when patentable research was actually completed while avoiding numerous methodological issues raised by the lags between patent filing and issue (Hall, Jaffe, Trajtenberg, 2000). Modeling patents in this fashion allows us to assume a simultaneous (with the same year) effect of network ties on patents and thus also limits the possibility of reverse causality. Nevertheless, regressions run in a two-stage least squares framework find no evidence of reciprocal causality from patents to ties.

Likewise, proposition two, which predicts that centrality will increase patenting for the Boston + network, is also supported in all model specifications.

[Table 2 Here]

The implication of hypothesis one is clear. Within a major regional biotechnology community, collaborations among organizations matter for explaining the innovative outputs of firms. Such ties, we contend, are important to the extent that they signal membership in a local technological community. A weak connection to the diffuse formal ties that constitute the main component of the local network enables firms to capture geographically bounded information spillovers by providing an entry ticket to rich informal networks of academic and industrial scientists, while also raising visibility in the local labor market.¹⁵ We also find negative (models 1-3) and non-significant (models 4-6) effects of membership in the larger and more diverse Boston + main component. This weak finding is suggestive of the difficulties that firms might face in capturing information flows through membership in a web of opaque connections. Where main component ties signal community membership locally, in a physically dispersed and institutionally diverse network of tightly monitored network pipelines, a comparable weak connection might be more akin to a competent minor leaguer attempting to play in the majors while lacking the necessary skills.

Hypothesis two also carries clear connotations. In the Boston + network, physical distance and the dominance of organizations committed to proprietary uses of knowledge

¹⁵ This robust effect is net of both direct R&D ties to local Boston PROs and local measures of betweenness centrality in model six. In unreported sensitivity analyses, we tested the possibility that our ‘membership’ variable actually proxies for a distinction between isolated DBFs and organizations with ties (whether connected or unconnected to the main component) by including a variable indicating whether organizations were true isolates or simply connected to smaller network components in the region. We found no effect of connections to smaller regional components. The relevant distinction, then, is truly between being linked to or isolated from the largest weakly connected component in the region.

render formal ties more closed, limiting the viability of informal network and labor market mobility as mechanisms for information transfer. Local codes of conduct and rules for interaction are unlikely to extend outside a region where point-to-point transmission of information through proprietary linkages is typical. Under these circumstances, being situated at the intersection of numerous formal pipelines enhances firm-level knowledge outputs. Model six provides clear support for propositions one and two relating differences in the geographic dispersion of formal alliance networks to variations in patterns of information flow and thus in innovation.

To take the irrigation analogy one step further, consider a system where the ‘leakiness’ of information and resource pipelines is dependent upon the types of nodes through which ideas typically pass. In Boston, for instance, the great majority of structurally important paths flow through PROs committed to open norms of information disclosure. In contrast, the Boston + network is anchored by multiple types of organizations that share varying commitments to proprietary uses of information. If node demography is important to the maintenance of loosely fettered formal ties, then the qualitative change in the Boston network’s reliance on PRO ties (documented in figures 1, 3, and 4 above) suggests that as the importance of proprietary information channels grows in the region we should see an increasing effect of local network position.

Our hypothesis three predicts just this effect. We test the hypothesis by use of a multiplicative interaction between local betweenness centrality and a dummy variable set to one for the period 1993-1998. This variable is interpretable as the effect of local

centrality on patenting in the later half of our time period.¹⁶ The main effect of Boston position, similarly, can be understood to represent the effect of local betweenness centrality in the early years of the time series. Finally, the main effect of time period represents the effect of a betweenness centrality score of zero (reflecting either an isolate or a firm with only one tie) in the later time period. We find consistent support for hypothesis three. As the Boston biotechnology community shifted from structural reliance on PROs towards dependence upon for-profit organizations (DBFs and VCs), local centrality began to generate benefits for innovation. Specifically, model six coefficients for the Boston position and the time period interaction variable suggest that in the early part of the time series a standard deviation increase in betweenness centrality was associated with a 23% *decrease* in expected patenting. In contrast, the same standard deviation increase in centrality in the second half of the time series implies a 28% *increase* in expected patenting. Not surprisingly, this transition is accompanied by a negative effect of having a very low centrality score in the last half of our time series.

Consider also the interesting, though not hypothesized, negative main effect of Boston position. This finding may reflect the aspects of power and arbitrage captured by betweenness centrality. In addition to enabling firms to appropriate information flows, high betweenness offers the possibility for firms to interrupt or alter transmissions to the detriment of their partners. The betweenness measure, then, offers two possibilities for arbitrage; a negative form where powerfully positioned middlemen extract value by interrupting or distorting information and a more positive form where cupids pass information on to distantly positioned network alters.

¹⁶ Note that our separation of our 11 year time frame into two periods corresponds with the beginning of increasing volatility and growth in DBF membership in the local component and a period of steep decline in the component's reliance on PRO ties. See Figure 3.

The robust negative effect of Boston position in models including time period interactions suggest that negative brokerage efforts by firms may be actively punished in communities dominated by PROs.¹⁷ While still only suggestive, one implication of this finding is that opportunistic behavior on the part of firms embedded in networks dominated by PROs magnifies the negative externalities that can be associated with playing a tertius role. Such 'punishment' may take multiple forms, such as university limitations on connections to 'pushy' commercial firms or resistance by partners to more stringent legal mechanisms to 'close' alliances in order to limit spillovers. Similarly, aggressive strategic use of a powerful structural position in the context of a more community-oriented network may limit access to informal information flows as scientists working in 'academic' institutional regimes tend to shy away from proprietary limitations on the use of their findings.

Our hypothesis four -- that increased local reliance on firms will not effect patenting -- is not borne out by our best fitting model. This hypothesis, however, represents a strong form of our argument as it implies that either geographic propinquity or node demography may alter the flow of information through a network structure. Model six, however, demonstrates that this is not the case. Consider the robustly positive effect of membership in the Boston main component (net of both local centrality *and* direct R&D ties to local PROs). The robust support that model six provides for hypotheses one and three implies that both propinquity and institutional characteristics -- two attributes of formal inter-organizational networks that are independent of structure --

¹⁷ This finding is not inconsistent with research demonstrating that networks rich in structural holes hinder innovation in industries characterized by high innovation rates (Walker et. al. 1997; Ahuja 2000). Our findings, however, suggest a further question about the role that different organizational forms play in mediating the effects of network characteristics on information flows.

alter that network effects on information flow. Both attributes of network nodes in the Boston biotechnology affect the relationship between network position and rates of innovation.

Conclusion and Implications

Our results demonstrate the importance of considering non-relational features of networks that alter the character of information transmission through a formal topology. These findings also indicate the extent to which formal partnerships between organizations represent the outcroppings of informal social relationships in a community. In sum, we find that two attributes -- geographic propinquity, and the institutional characteristics of key members in a network -- transform the ways in which an organization's position within a larger network configuration translates into advantage. This effect is driven, we contend, by variations in the security of the network ties themselves. The extent to which information transmitted through formal linkages is accessible is a function of: (1) the extent to which ties are embedded in a dense, regional web of formal and informal affiliations, and (2) whether the nodes that anchor a network pursue public or private goals. These findings suggest that studies of innovation should take into account the dual importance of physical location and institutional anchors. The joint examination of propinquity and centrality, we contend, links economic geography's emphasis on concentrated information spillovers with economic sociology's focus on knowledge flows through an abstract social topology.

Emphasizing key organizational features of network nodes, in contrast, reminds us that the institutional and legal arrangements that secure directed information transmission are an outcome of participant commitments and efforts. Independent of

propinquity effects, we find that differences in the composition of network participants shift the relationship between centrality and innovation. In more general terms, this finding represents a first step toward blending network and institutional approaches thus illuminating the central role of key nodes in a network as carriers of the rules and practices. We present a relatively simple typology of node types, considering only the extent to which an organization conducts research under academic or proprietary institutional regimes. The practices and commitments of network nodes can be sharply divergent, with one set of organizations emphasizing open at the expense of restricted relationships. Under such conditions, dominant logics emerge at the level of both networks and communities. Transparent modes of information transfer will trump more opaque or sealed mechanisms when a significant proportion of participants exhibit limited concern with policing the accessibility of network pipelines.

To pursue the image we employ, closed conduits offer reliable and excludable information transfer at the cost of fixity, and thus are more appropriate to a stable environment. In contrast, permeable channels rich in spillovers are responsive and may be more suitable for variable environments. In a stable world, or one where change is largely incremental, such channels represent excess capacity. The implications of both node characteristics and network features, then, are deeply conditioned by environmental volatility and this possibility has not been well attended to in literatures relating network position to organizational outcomes.¹⁸

Thus, proprietary arrangements can come to dominate once open architectures as fields stabilize and innovation becomes less radical. Indeed, this is a common

¹⁸ We thank an anonymous reviewer whose questions about the substitutability of pipe and conduit ties in innovation networks greatly aided our thinking.

evolutionary pattern in the emergence of new sectors and one that has shaped a variety of industrial and technological trajectories. Examining the conditional effects of institutional regimes and network topologies upon industrial and regional development opens the possibility that institutional factors and propinquity may contribute to studies of emergence, maintenance, and change in networks and sectors. At the same time, attending to interdependencies across categorical features of nodes and structural features of networks implies that research relating central positions to outcomes may do well to account for the presence and role multiple organizational forms play in the constitution and maintenance of innovation systems. While we limit our consideration to the effects of organizational commitments in an existing network, concern with the dominance of different logics of appropriateness offers a new set of tools to examine structural and technological change, an approach that emphasizes normative rules guiding partner selection, and access to information systems of varying opacity.

Works Cited.

- Ahuja, G. 2000a. Collaboration Networks, Structural Holes, and Innovation: A Longitudinal Study. **Admin. Sci. Quart** **45** 425-455.
- 2000b. The Duality of Collaboration: Inducements and Opportunities in the Formation of Interfirm Linkages. **Strategic Management Journal** **21** 317-343.
- Almeida, P and B. Kogut. 1999. Localization of Knowledge and the Mobility of Engineers in Regional Networks. **Management Sci.** **45** 905-917.
- Almeida, P. G. Dokko and L. Rosenkopf. 2003. Startup Size and the Mechanisms of External Learning: Increasing Opportunity and Decreasing Ability? **Res. Policy.** **32** 301-315.
- Anselin, L, A Varga, and Z Acs, 1997. Local Geographic Spillovers between University Research and High Technology Innovations. **J. Urban Economics** **42** 422-448.
- Arora, A. and A. Gambardella, 1990. "Complementarity and External Linkages – The Strategies of the Large Firms in Biotechnology." **J. Ind. Economics** **38** 361-379.
- Audretsch, D. and P. Stephan, 1996. Company-Scientist Locational Links: The Case of Biotechnology. **Am. Econ. Rev.** **86** 641-652.
- Brown, J.S. and P. Duguid. 1991. Organizational Learning and Communities-of-Practice: Toward a Unified View of Working, Learning, and Innovation. **Organization Sci.** **2** 40-57.
- Burt, R.S. 1992. *Structural Holes: The Social Structure of Competition*. Cambridge, MA: Harvard University Press.
- Cameron, A. C. and P. K. Trivendi, 1998. *Regression Analysis of Count Data*. Cambridge, UK: Cambridge University Press.
- Dasgupta, P. and P. David, 1987. Information Disclosure and the Economics of Science and Technology. in G.R. Feiwel (ed.) *Arrow and the Ascent of Modern Economic Theory*. New York: New York University Press. Pp. 519-542.
- 1994. Toward a New Economics of Science. **Res. Policy** **23** 487-521.
- Davis, G. and H. Greve, 1997. Corporate Elite Networks and Governance Changes in the 1980s. **Am. J. Sociology** **103** 1-37.
- Davis G.F., M. Yoo, and W.E. Baker, 2003. The Small World of the American Corporate Elite, 1991-2001. **Strat. Organization** **1** 301-336.
- Dosi G. 1982. Technological Paradigms and Technological Trajectories – A Suggested Interpretation of the Determinants and Directions of Technical Change. **Res. Policy** **11** 147-162.
- Eisenhardt, K.M. and C.B. Schoonhoven. 1996. Resource-Based View of Strategic Alliance Formation: Strategic and Social Effects in Entrepreneurial Firms. **Organization Sci.** **7** 136-150.
- Freeman, L.C., 1977. A Set of Measures of Centrality Based on Betweenness. **Sociometry** **40** 35-41.
- , 1979. Centrality in Social Networks: Conceptual Clarification. **Soc. Networks** **1** 215-239.
- Fruchterman, T., E. Reingold. 1991. Graph Drawing by Force-Directed Replacement. **Software -- Practice and Experience** **21** 1129-1164.
- George, G., S.H. Zahra, and D. R. Wood. 2002. The Effects of Business-University

- Alliances on Innovative Output and Financial Performance: A Study of Publicly Traded Biotechnology Companies. **J. Bus. Venturing** 17 577-609.
- Granovetter, M. 1985. Economic Action and Social Structure – The Problem of Embeddedness. **Amer. J. Sociology** 91 481-510.
- Guyon X., 1994. *Random Fields on a Network*. Berlin, Springer.
- Hagedoorn, J. and J. Schankenraad. 1994. The Effect of Strategic Technology Alliances on Company Performance. **Strategic Management Journal** 15 291-309.
- Hall, B.H., A. Jaffe, and M. Trajtenberg, 2000. Patent Citations and Market Value: A First Look. **NBER Working Paper #7741**.
- Hausman, J. B.H. Hall, and Z. Griliches, 1984. Econometric Models for Count Data With an Application to the Patents R&D Relationship, **Econometrica** 52 909-938.
- Henderson, R. and I. Cockburn, 1996. Scale, Scope, and Spillovers: The Determinants of Research Productivity in Drug Discovery. **Rand J. Econ.** 27 32-59.
- Kamada, T. and S.-Kawai, 1989. An Algorithm for Drawing General Undirected Graphs. **Inform. Process. Lett.** 31 7-15.
- Krugman, P. 1991. Increasing Returns and Economic Geography. **J. Polit. Econ.** 99 483-499.
- Jaffe, A. M. Trajtenberg, and R. Henderson, 1993. Geographic Localization of Knowledge Spillovers as Evidenced by Patent Citations. **Quart. J. Econ.** 63 577-598.
- Lansing, J.S. 1991. *Priests and Programmers: Technologies of Power in the Engineered Landscape of Bali*. Princeton: Princeton University Press.
- Malerba, F. and L. Orsenigo, 2002. Innovation and Market Structure in the Dynamics of the Pharmaceutical Industry and Biotechnology: Toward a History Friendly Model. **Ind. Corp. Change** 11 667-703.
- Marshall, A. 1920. *Industry and Trade*. London: U.K.: Macmillan.
- Mizruchi, M.S. 1992. *The Structure of Corporate Political Action: Interfirm Relations and Their Consequences*. Cambridge, MA: Harvard University Press.
- Moody, J. and D.R. White, 2003. Group Cohesion, Nesting, and Embeddedness. **Am. Soc. Rev.** 68 103-127.
- Murray, F. (2002) Innovation as the Co-evolution of Scientific and Technological Networks: Exploring Tissue Engineering. **Res. Policy** 31 1389-1403.
- Nelson, R.R. 1981. Assessing Private Enterprise: An Exegesis of Tangled Doctrine. **Bell J. Econ.** 12 93-111.
- , 1986. Institutions Supporting Technical Advance in Industry. **Am. Econ. Rev.** 76 186-189.
- , 1990. Capitalism as an Engine of Progress. **Res Policy** 19 193-214.
- Owen-Smith, J. 2003. From Separate Systems to a Hybrid Order: Accumulative Advantage Across Public and Private Science at Research One Universities. **Res. Policy** 32 1081-1104.
- Owen-Smith, J. M. Riccaboni, F. Pammolli, and W.W. Powell, 2002. A Comparison of U.S. and European University-Industry Relations in the Life Sciences. **Management Sci.** 48 24-43.
- Palmer, T.C. 2002. Building on Biotech With Lab Space Tight, Developer Banks on Sector's Future. **Boston Globe** 06/20/02: C1.

- Podolny, J. 2001. Networks as the Pipes and Prisms of the Market. **Amer. J. Sociology** **107** 33-60.
- Powell, W.W. 1990. Neither Market Nor Hierarchy: Network Forms of Organization. **Res. Org. Behavior** **12** 295-336.
- 1996. Inter-Organizational Collaboration in the Biotechnology Industry. **J. Inst. And Theoretical Econ.** **152** 197-215.
- Powell W.W. and P. Brantley, 1992. Competitive Cooperation in Biotechnology: Learning Through Networks. In N. Nohira & R.G. Eccles (eds.) *Networks in Organizations*.
- Powell, W. W., K. Koput, and L. Smith-Doerr, 1996. Interorganization Collaboration and the Locus of Innovation: Networks of Learning in Biotechnology. **Admin. Sci. Quart.** **41** 116-145.
- Powell, W.W., K.W. Koput, J. Bowie, and L. Smith-Doerr, 2002. The Spatial Clustering of Science and Capital. **J. Reg. Studies** **36** 291-305.
- Powell W.W., D.R. White, K.W. Koput and J. Owen-Smith, 2004. Network Dynamics and Field Evolution: The Growth of Interorganizational Collaboration in the Life Sciences. **Amer. J. Sociology.** *Forthcoming*.
- Romer, P.M. 1986. Increasing Returns and Long Run Growth. **J. Polit. Econ.** **94** 1002-1037.
- Saxenian, A. 1994. Regional Advantage: Culture and Competition in Silicon Valley and Route 128. Cambridge, MA: Harvard U. Press.
- Scarborough. V.L., J.W. Schoenfelder, and J.S. Lansing, 1999. Early Statecraft on Bali: The Water Temple Complex and the Decentralization of the Political Economy. **Res. Econ. Anthropology** **20** 299-330.
- Shan, W., G. Walker and B. Kogut. 1994. Interfirm Cooperation and Startup Innovation in the Biotechnology Industry. **Strategic Management Journal.** **15** 387-394.
- Stuart, T. 1998. Network Position and Propensities to Collaborate: an Investigation of Strategic Alliance Formation in a High-Technology Industry. **Admin. Sci. Quaterly** **43** 668-698.
- 2000. Interorganizational Alliances and the Performance of Firms:A study of Growth and Innovation Rates in a High-Technology Industry. **Strategic Management Journal** **21** 791-811.
- Stuart, T. E. and O. Sorenson, 2003. The geography of opportunity: Spatial heterogeneity in founding rates and the performance of biotechnology firms. **Res. Policy** **32** 229-253.
- Uzzi, B. 1996. The Sources and Consequences of Embeddedness for the Economic Performance of Organizations: The Network Effect **Am. Soc. Rev** **61** 674-698.
- 1997. Social Structure and Competition in Interfirm Networks: The Paradox of Embeddedness. **Admin. Sci. Quart.** **42** 35-67.
- Walker G. B. Kogut, and W.J. Shan, 1997. Social Capital, Structural Holes, and the Formation of an Industry Network. **Organ. Sci.** **8** 109-125.
- White, H.C. 1981. Where Do Markets Come From? **Amer. J. Sociology** **87** 517-547.
- 2002. *Markets from Networks: Socioeconomic models of production*. Princeton: Princeton University Press.
- Zucker L.G. and M. Darby, 1996. Star Scientists and Institutional Transformation:

Patterns of Invention and Innovation in the Formation of the Biotechnology Industry. **P. Natl. Acad. Sci.** **93** 12709-12716.

Figure 1. Boston Network, 1988

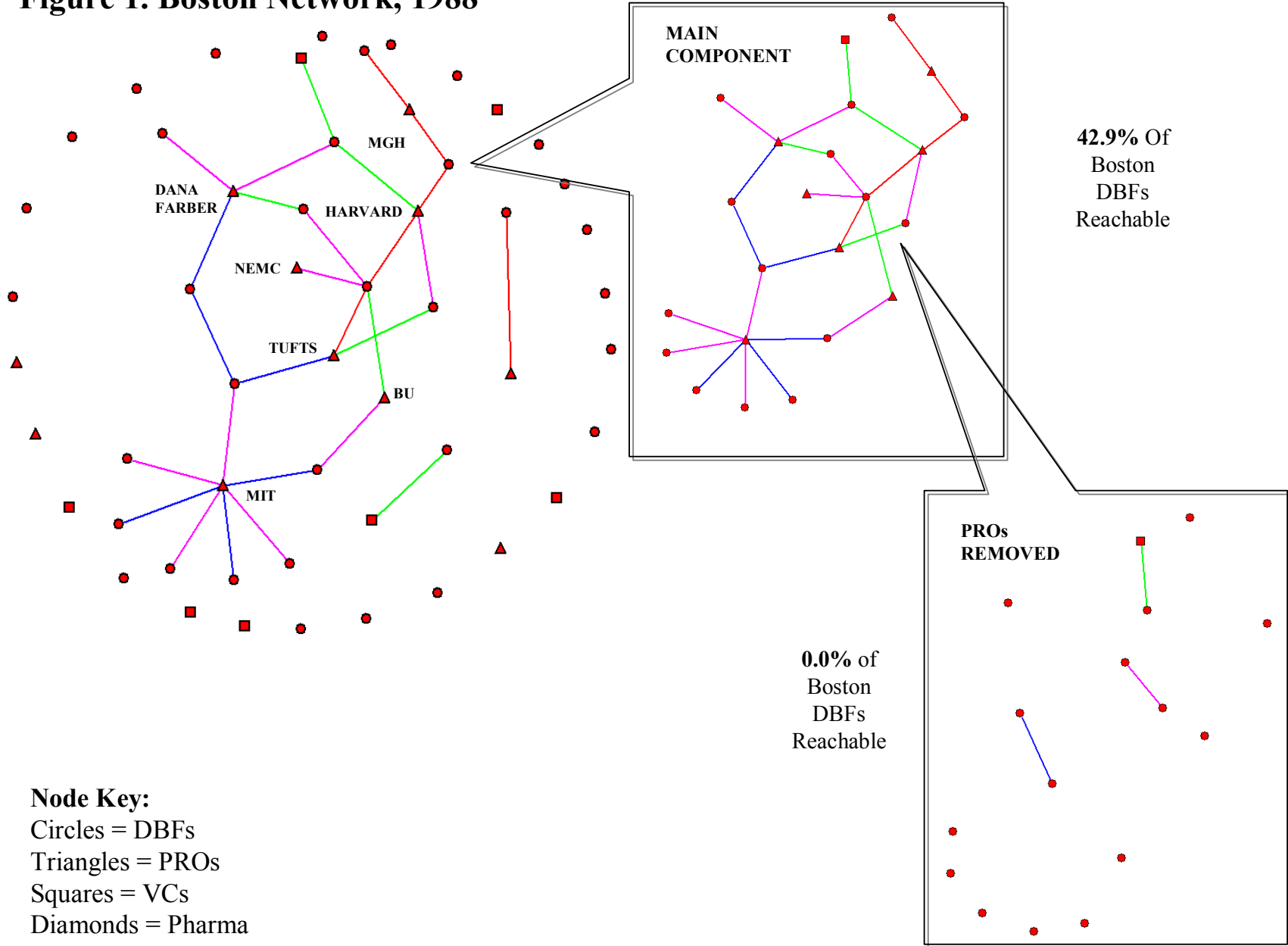


Figure 2. The Boston + Network, 1988

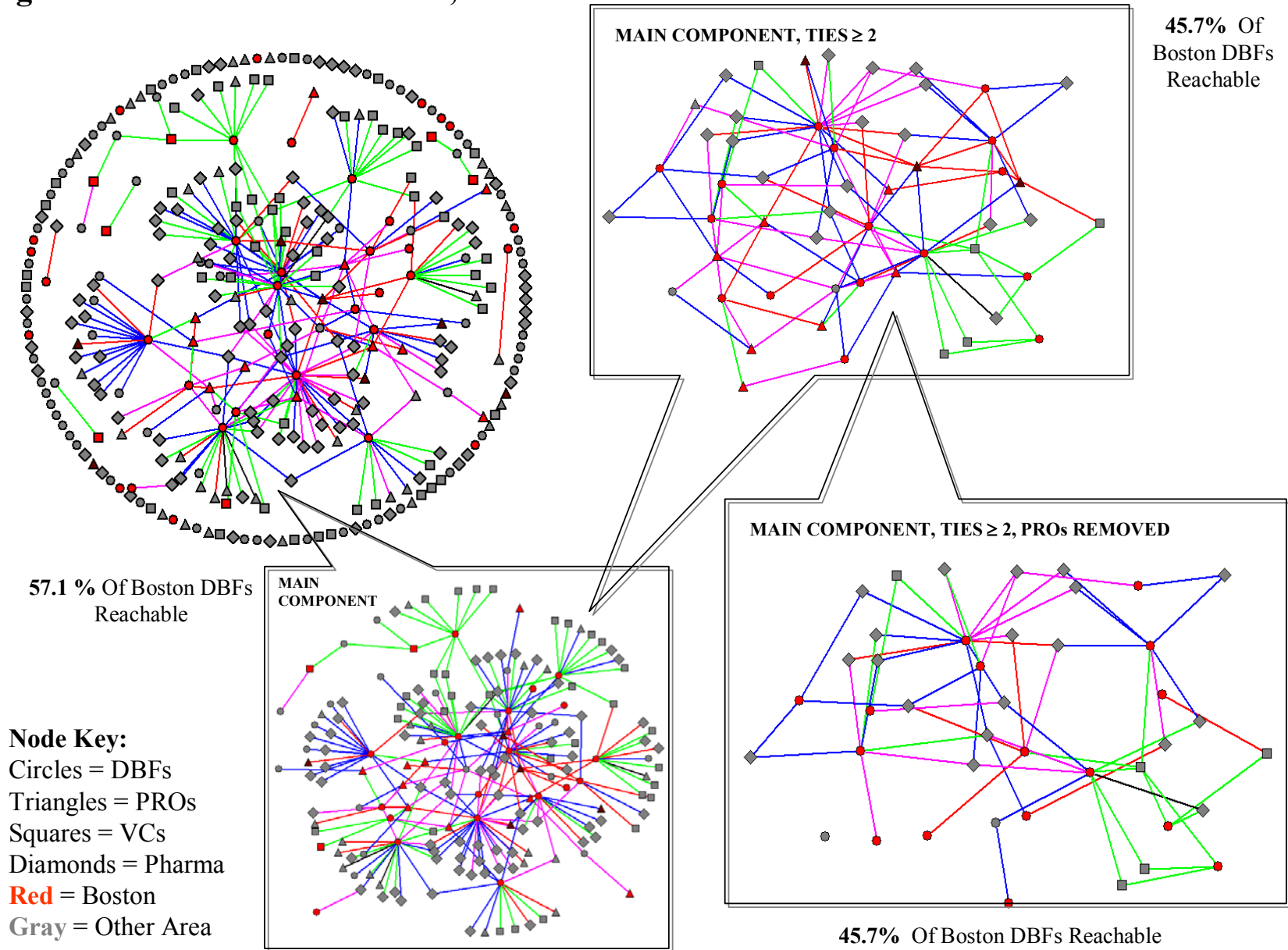
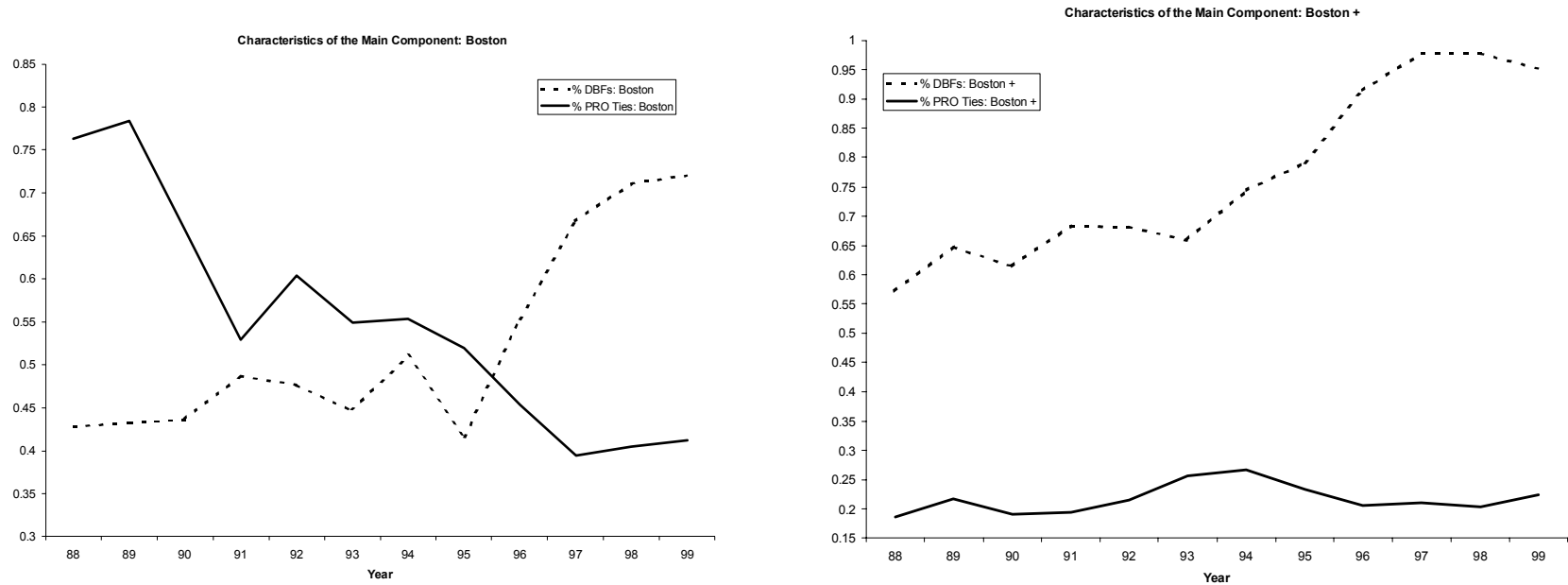


Figure 3. Characteristics of the Boston and Boston-Plus Main Components, 1988-1999



Year	% DBFs: Boston	% DBFs: Boston +	% PRO Ties: Boston	% PRO Ties: Boston +
88	42.9%	57.1%	76.3%	18.6%
89	43.2%	64.9%	78.4%	21.8%
90	43.6%	61.5%	65.9%	19.1%
91	48.8%	68.3%	52.9%	19.4%
92	47.7%	68.2%	60.4%	21.5%
93	44.7%	66.0%	54.9%	25.6%
94	51.1%	74.5%	55.4%	26.7%
95	41.7%	79.2%	51.9%	23.3%
96	55.3%	91.5%	45.3%	20.5%
97	66.7%	97.8%	39.5%	21.1%
98	71.1%	97.8%	40.5%	20.3%
99	72.1%	95.3%	41.2%	22.4%

Figure 4. Boston Network, 1998

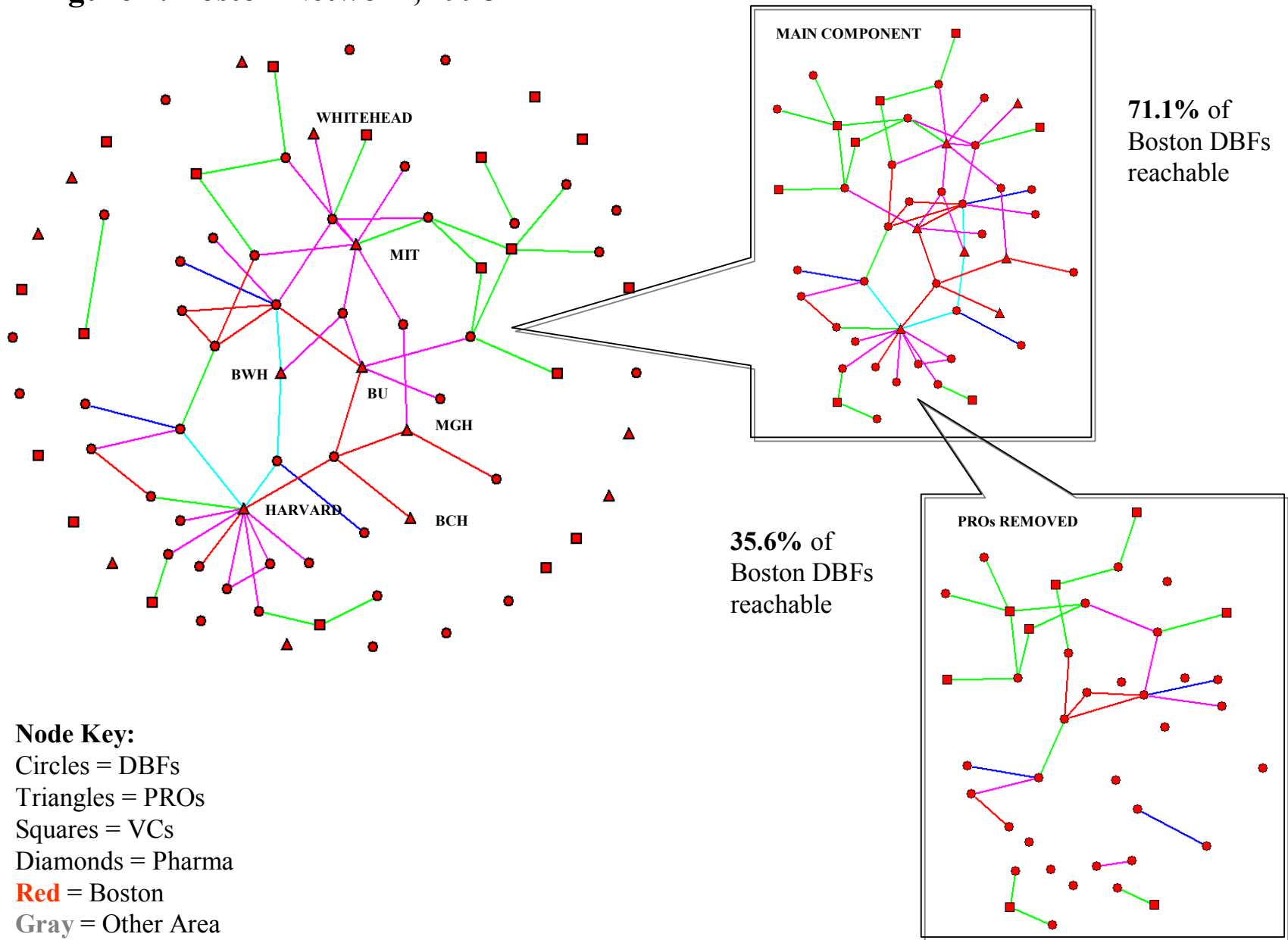


Table 1. Variable labels and definitions

VARIABLE	DEFINITION
<i>Dependent Variable</i>	
# Patents (application)	Yearly count of successful patent applications
<i>Independent Variables</i>	
Boston Membership	Dummy variable, 1=connected to the main network component in Boston network.
Boston Position	DBF betweenness centrality score, Boston Network
Boston + Membership	Dummy variable, 1=connected to the main component in the Boston + network
Boston + Position	DBF betweenness centrality score, Boston + Network (Boston ties removed)
Time Period	Dummy Variable, 1=1993-1998
Time Period X Boston Position	Interaction between a time period dummy variable (1=1993-1998) and Boston Position
<i>Controls</i>	
Public	Dummy variable, 1= publicly traded firm
Age	Age in years since firm founding
Age ²	Age in years since firm founding, squared
Log(size)	Log(number of employees)
Boston R&D Ties: PRO	Number of R&D ties to Boston Area Public Research Organizations
Ties to NIH Complex	Number of ties (all types) to the National Institutes of Health and sub-agencies
Boston R&D Ties: PRO X NIH Ties	Interaction between number Boston R&D ties to PROs and a dummy variable capturing the presence of one or more ties to the NIH and sub-agencies

Table 2. Conditional Fixed-Effects Negative Binomial Regressions of Successful Patent Applications, 1988-1998

	Model 1	Model 2	Model 3	Model 4	Model 5	Model 6
Public (SE)	-0.090 (0.190)	-0.090 (0.190)	-0.075 (0.190)	-0.044 (0.189)	-0.015 (0.190)	0.003 (0.189)
Age	0.190 (0.081)*	0.190 (0.081)*	0.223 (0.083)**	0.149 (0.088)	0.145 (0.089)	0.193 (0.090)*
Age ²	-0.008 (0.003)*	-0.008 (0.003)*	-0.010 (0.003)**	-0.006 (0.003)	-0.006 (0.003)	-0.009 (0.004)*
Log(Size)	0.679 (0.132)**	0.679 (0.132)**	0.657 (0.132)**	0.654 (0.130)**	0.656 (0.130)**	0.633 (0.129)**
Boston Main Component	0.376 (0.118)**	0.376 (0.118)**	0.368 (0.118)**	0.413 (0.118)**	0.425 (0.119)**	0.411 (0.119)**
Boston Betweenness	-4.328 (3.589)	-4.328 (3.589)	-10.420 (5.275)*	-4.768 (3.671)	-6.914 (3.867)	-15.626 (5.992)**
Boston + Component	-0.585 (0.258)*	-0.585 (0.258)*	-0.556 (0.259)*	-0.363 (0.277)	-0.459 (0.277)	-0.471 (0.277)
Boston + Betweenness	15.960 (4.257)**	15.960 (4.257)**	14.001 (4.420)**	9.689 (4.789)*	10.892 (4.794)*	9.521 (4.832)*
Time Period		-2.142 (0.569)**	-2.286 (0.559)**	-1.940 (0.601)**	-1.918 (0.600)**	-2.103 (0.579)**
Time Period X Boston Betweenness			11.019 (6.519)			14.520 (7.161)*
Boston R&D Ties: PRO				0.132 (0.106)	0.325 (0.135)*	0.392 (0.138)**
NIH Ties				0.172 (0.061)**	0.197 (0.061)**	0.186 (0.061)**
Boston R&D PRO X NIH Ties					-0.317 (0.152)*	-0.436 (0.164)**
Constant	-4.073 (1.004)**	-1.931 (0.683)**	-1.967 (0.682)**	-1.913 (0.690)**	-1.794 (0.699)*	-1.798 (0.697)**
Pseudo R ²	0.445	0.450	0.452	0.456	0.459	0.461
Log-likelihood	-441.748	-441.749	-440.274	-436.742	-434.604	-432.464
N	337	337	337	337	337	337

*p<.05, **p<.01

Pseudo R² calculated manually relative to an intercept only model of patent applications.

All models include fixed firm and year effects.

Appendix Table A1. Descriptive statistics and correlations

	Mean	SD	Min	Max	1	2	3	4	5	6	7	8	9	10	11	12	13	14	
1 # Patents (application)	2.756	4.693	0.000	36.000	1.000														
2 Public	0.656	0.476	0.000	1.000	0.130	1.000													
3 Age	8.903	4.893	0.000	29.000	0.099	0.170	1.000												
4 Age2	103.139	112.428	0.000	841.000	0.059	0.046	0.953	1.000											
5 Log(Size)	4.420	1.079	1.099	8.132	0.454	0.470	0.325	0.223	1.000										
6 Boston Membership	0.493	0.501	0.000	1.000	0.060	0.140	0.021	-0.028	0.215	1.000									
7 Boston R&D Ties: PRO	0.147	0.528	0.000	4.000	0.053	0.013	0.137	0.097	0.117	0.243	1.000								
8 Boston Position	0.007	0.017	0.000	0.130	-0.026	0.033	0.075	0.037	0.178	0.378	0.309	1.000							
9 Time Period	0.575	0.495	0.000	1.000	0.110	0.238	0.192	0.181	0.013	-0.011	-0.072	0.003	1.000						
10 Time Period X Boston Position	0.004	0.014	0.000	0.130	0.004	0.105	0.093	0.073	0.118	0.272	0.103	0.754	0.244	1.000					
11 Boston-Plus Membership	0.898	0.304	0.000	1.000	0.016	0.211	-0.124	-0.185	0.159	0.333	0.094	0.133	0.025	0.096	1.000				
12 Ties To NIH Complex	0.685	1.330	0.000	8.000	-0.030	0.066	0.020	-0.019	0.064	0.159	-0.016	0.052	-0.104	0.070	0.174	1.000			
13 Boston-plus Position	0.021	0.020	0.000	0.100	0.180	0.229	0.099	0.017	0.448	0.405	0.128	0.386	-0.054	0.375	0.343	0.420	1.000		
14 Boston R&D Ties: PRO X Ties to NIH	0.042	0.296	0.000	3.000	0.047	0.009	0.041	0.011	0.112	0.144	0.533	0.104	-0.147	0.030	0.048	0.154	0.270	1.000	