

Lack of telomerase activity in human mesenchymal stem cells

S Zimmermann^{1,2}, M Voss^{1,2}, S Kaiser¹, U Kapp¹, CF Waller¹ and UM Martens¹

¹Department of Hematology/Oncology, Freiburg University Medical Center, Freiburg, Germany

Telomerase activity and telomere maintenance have been associated with immortality in tumor and embryonic stem cells. Whereas most normal somatic cells are telomerase negative, low levels of this enzyme have been found in adult stem cells from the skin, gut and the hematopoietic system. Here, we show that telomerase activity is not detectable in human mesenchymal stem cells (hMSCs), which have the phenotype SH2⁺, SH3⁺, SH4⁺, CD29⁺, CD44⁺, CD14⁻, CD34⁻ and CD45⁻, and have the capacity to differentiate into adipocytes, chondrocytes and osteoblasts. These data suggest that hMSCs have a different telomere biology compared to other adult stem cells. Alternatively, true mesenchymal stem cells might be a very rare subpopulation that have a detection level that is below the sensitivity of the TRAP assay.

Leukemia (2003) 17, 1146–1149. doi:10.1038/sj.leu.2402962

Keywords: telomere; telomerase; mesenchymal stem cells; MSC; TRAP assay

Introduction

Human mesenchymal stem cells (hMSCs) have attracted much attention because of their multipotential properties with regard to differentiation, and their possible use for cell and gene therapy.¹ hMSCs from bone marrow are referred to as stroma-derived stem cells which give rise to multiple nonhematopoietic cell lineages, such as osteoblasts, chondrocytes, adipocytes and hematopoiesis-supporting stroma.^{2–4} hMSCs have been described to be negative for CD14, CD34, CD45, and positive for SH2, SH3, CD29, CD44, CD71, CD90, CD106, CD120a and CD124.^{4,5} Furthermore, hMSCs have the ability to proliferate extensively *in vitro*, and maintain the capacity to differentiate into multiple cell types upon culture, which has been associated with their stem cell nature.^{4,6,7} Recently, a more primitive multipotent adult progenitor cell population (MAPCs) was identified, which differentiates not only into mesenchymal cells, but also into cells with characteristics of visceral mesoderm, neuroectoderm and endoderm.^{7,8}

It has been established that the proliferative capacity of human cells is causally linked to the functional maintenance of their telomeres, which constitute the final ends of chromosomes. Telomeres consist of TTAGGG repeats and associated proteins in human cells.⁹ They serve to protect the ends of chromosomes from end-to-end fusion, recombination and degradation. In most normal somatic cells, telomere sequences are lost during replication *in vitro* and *in vivo*, limiting their proliferative capacity.^{10–13} In contrast, immortal cells such as tumor and embryonic stem cells are capable of maintaining telomere function, in general, by activation of the reverse transcriptase telomerase.^{14–16} Unlike most normal somatic cells that are telomerase negative, low to moderate levels of the enzyme have been described in adult stem cells from skin,¹⁷ gut,¹⁸ and from

the hematopoietic system.^{19,20} Furthermore, telomerase activity in hematopoietic cells has been associated with a capacity for self-renewal.²¹ In order to define the telomerase status in mesenchymal stem cells, we determined the activity of the enzyme in several human specimens, which surprisingly revealed that these cells are telomerase negative using the TRAP assay.

Materials and methods

Isolation, characterization and culture of hMSCs

hMSCs (MSC nos. 1–3) with the capacity for adipogenic, chondrogenic and osteogenic differentiation were obtained from Osiris Therapeutics Inc., Baltimore (via CellSystems, St. Katharinen, Germany). The cryopreserved cells (hMSC 6830) showed the following flow-cytometric expression of surface antigens after the second passage, according to the certificate of analysis: positive for SH2, SH3, SH4, CD29, CD44 and negative for CD14, CD34 and CD45. Cells were plated at a density of 3000–6000 cells/cm² in 0.2–0.4 ml MSCGM Medium (Osiris Therapeutics Inc.) per cm² growth area and were supplemented with 10% mesenchymal cell growth supplement (Osiris Therapeutics Inc.), 2% L-glutamin, 0.05 U/ml penicillin, 0.05 µg/ml streptomycin (MSCGM SingleQuots[®], Osiris Therapeutics Inc.). The medium was replenished every 3–4 days and cells were passaged upon reaching a confluency of 80–90%.

MSC nos. 4–8 were derived from fresh bone marrow samples of healthy individuals according to the guidelines of the University of Freiburg. Mononuclear cells (MNCs) were separated by density gradient centrifugation and plated at a density of 100 000–150 000 MNCs/cm² in MSCGM medium. Nonattached cells were washed away the following day. Once adherent cells were more than 50% confluent, they were detached with 1 × trypsin–EDTA (Invitrogen GmbH, Karlsruhe, Germany) and replated at a density of 1000 cells/cm² under the same culture conditions. This method produced a continuous culture density between 1000 and 4000 cells/cm². Adipogenic and osteogenic differentiation potential was verified using the same RT-PCR and staining methods previously shown by others.⁴ Flow-cytometric analysis revealed that these cells were positive for SH2, SH3, CD90, and negative for CD34, CD45 and AC133 using FITC-labeled monoclonal antibodies (Becton Dickinson, Heidelberg, Germany).

Telomerase activity

Telomerase activity was determined using the TeloTAGGG PCR ELISA^{PLUS} kit (Roche, Mannheim, Germany) according to the manufacturer's protocol. Briefly, 2 × 10⁵ cells per sample were lysed in 200 µl Chaps buffer, and 0.5 µg of protein supernatant was used for PCR reaction in a total volume of 50 µl. Telomerase activity was described in a semiquantitative manner as 'relative telomerase activity' (RTA), relating the ELISA signal of the

Correspondence: Dr U Martens, Department for Hematology/Oncology, Freiburg University Medical Center, Hugstetterstr. 55, D-79106 Freiburg, Germany; Fax: +49 761 270 3206

²Both these authors contributed equally.

Received 4 November 2002; accepted 14 February 2003

sample to the one obtained by a control template with a known number of telomeric repeats. Frozen aliquots of Phoenix amphi cells, which form a second-generation retrovirus producer line based on the 293 T cell line, were analyzed with each test as an additional positive control. Telomerase activity was expressed as a percentage of the RTA of hMSCs relative to the RTA of phoenix amphi cells.

In addition, 20 μ l of PCR product was resolved by a 12% polyacrylamide gel, and visualized by a Biotin Luminescent Detection Kit (Roche, Mannheim, Germany) according to the manufacturer's protocol.

Results and discussion

Telomerase activity was measured in previously frozen hMSCs with the phenotype SH2⁺, SH3⁺, SH4⁺, CD29⁺, CD44⁺, CD14⁻, CD34⁻ and CD45⁻ from three different donors (MSC nos. 1–3). Interestingly, we did not detect telomerase activity using the TRAP-ELISA assay at the beginning of culture (Table 1), nor at later stages during cell expansion (Table 2). To exclude that this

Table 1 Absence of telomerase activity in hMSCs

Donor	Telomerase activity (%)
MSC 1	1
MSC 2	0
MSC 3	1
MSC 4	1
MSC 5	0
MSC 6	0
MSC 7	0
MSC 8	0
CB (n=7)	Median: 51 (range: 29–82)
Phoenix	100

Telomerase activity was measured in eight samples of human mesenchymal stem cells (hMSCs). MSC nos. 1–3 were previously frozen; MSC nos. 4–8 were derived from fresh bone marrow samples. Telomerase activity was expressed as a percentage relative to the activity of an immortal control cell line (Phoenix amphi cells). As additional positive control, the activity in seven cord blood (CB) samples with the phenotype CD34⁺ was measured. Telomerase activity is considered to be positive if the difference in absorbance of hMSCs is higher than the two-fold background activity which was not observed in any of the investigated MSC samples.

Table 2 Absence of telomerase activity in hMSCs during cell expansion

CPDL	Telomerase activity (%)
2.2	1
4.7	1
6.6	0
10.1	1
12.2	1
13.7	1
14.6	0
15.3	0

Sequential analysis of telomerase activity during *in vitro* expansion of MSC 1. Telomerase activity was expressed as a percentage relative to the activity of an immortal control cell line (see Figure 1). CPDL: cumulative population doubling levels.

finding was because of prior cryopreservation of hMSCs, we also analyzed telomerase activity in freshly isolated hMSCs (MSC nos. 4–8), which were positive for SH2, SH3, CD90 and negative for CD34, CD45 and AC133. Again, we found that these MSCs had no detectable levels of telomerase. We also measured telomerase activity when hMSCs were plated at a lower density, which has been reported to support the growth of recycling stem cells with higher proliferative capacity.²² However, even under these conditions we were unable to detect significant levels of telomerase (data not shown) indicating that hMSCs are either truly telomerase negative or the activity is below the level of detection using the TRAP-ELISA assay.

In order to evaluate the sensitivity of the TRAP-ELISA assay, we diluted hMSCs with telomerase-positive phoenix cells at different concentrations (Figure 1a). Similar to a previous report, telomerase activity was detected in the range of 1:1000 to

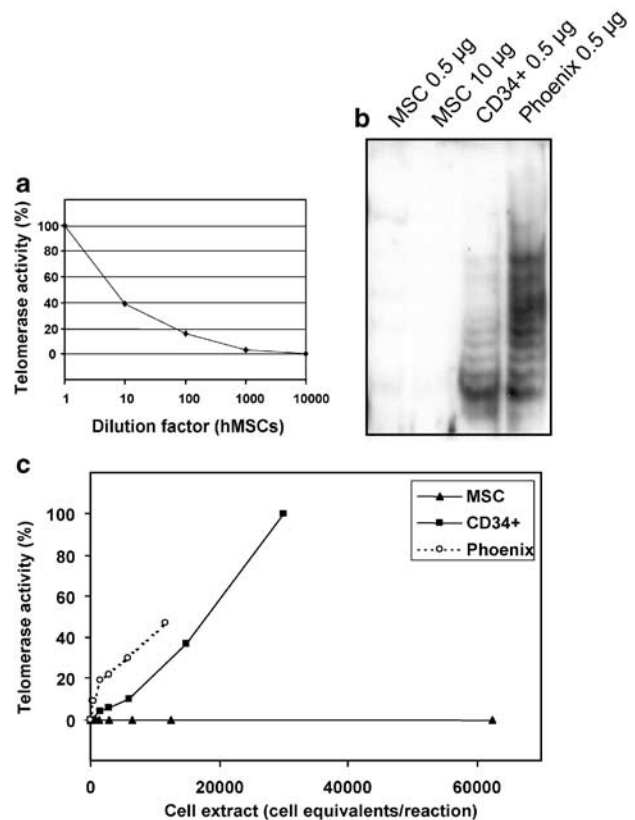


Figure 1 Telomerase activity in hMSCs. (a) Detection of telomerase-positive cells in the presence of telomerase-negative cells in order to determine the sensitivity of the TRAP-ELISA assay. Telomerase activity is expressed as a relative percentage of the RTA values. Telomerase-positive Phoenix cells were mixed with telomerase-negative hMSCs at indicated ratios. (b) Representative Southern blot from a TRAP assay experiment demonstrating the typical telomerase-mediated six-nucleotide ladder in a telomerase-positive Phoenix cell line. hMSCs and CD34⁺ cells were derived from the same bone marrow donor (no. 8) using different amounts of protein for hMSCs. (c) Telomerase activity was analyzed using the TRAP-ELISA assay at different concentrations of cell extracts. Telomerase activity is expressed as a relative percentage of the RTA values. Cell equivalents of hMSCs (triangles) and CD34⁺ cells (squares), which were derived from the same bone marrow donor (no. 8) were assayed at indicated numbers per reaction. Phoenix amphi cells (open circles) were used as a positive control. Note that more than 60 000 cell equivalents of hMSCs (=10 μ g protein, see b) assayed in a single reaction demonstrated no telomerase activity.

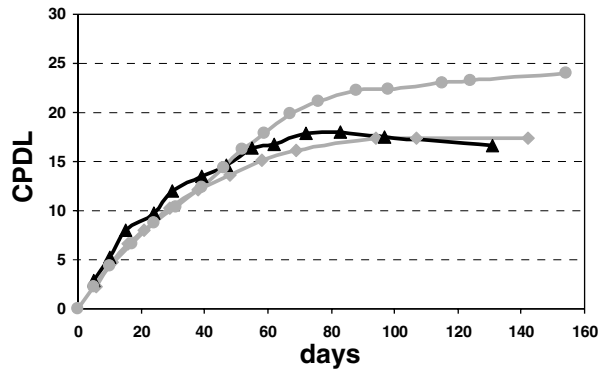


Figure 2 Replicative senescence of hMSCs upon cell expansion. hMSCs with the phenotype SH2⁺, SH3⁺, SH4⁺, CD29⁺, CD44⁺, CD14⁻, CD34⁻ and CD45⁻ from three different donors (MSC nos. 1–3) were cultured after plating at a density of 3000–6000 cells/cm². CPDL: cumulative population doubling levels. MSC 1 ◆, MSC 2 ▲, MSC 3 ●.

1:10 000 cells.²³ Finally, the activity of telomerase was determined in CD34⁺ cells and hMSCs from the same individual assaying different numbers of cell equivalents. Increasing telomerase activity was measured in the Phoenix control as well as in hematopoietic progenitor cells. However, no detectable telomerase activity was observed in hMSCs even when a protein concentration of 10 µg was used, which corresponds to more than 60 000 cell equivalents (Figure 1B and C).

In order to determine the *in vitro* lifespan, cells from MSC nos. 1–3 were cultured at a density of 3000–6000 cells/cm² over multiple passages until proliferation stopped. The number of population doublings per day decreased continuously and the maximum was determined as 18.7 ± 2.5 (Figure 2a). This time, the cells showed typical features of senescence with a broad and flattened shape. Thus, the proliferative *in vitro* lifespan of hMSC appears to be limited similar to normal somatic cells, which is in agreement with a previous report.²⁴

Our findings are in contrast to the observation by Pittenger *et al*⁴ who detected high telomerase activity in hMSCs of the same phenotype. However, in their studies it was surprising that a typical negative control (human diploid fibroblasts) was also telomerase positive as indicated in the supplementary data. In general, telomerase activity is absent in normal somatic cells, but has been detected in cells with self-renewal capacity from skin, gut and the hematopoietic system.^{17–19} In contrast to embryonic stem cells, which are capable of maintaining telomeres by telomerase, adult stem cells undergo progressive telomere shortening and appear to be mortal, although the activity of telomerase might extend their proliferative capacity. Similarly, the proliferative capacity of hMSCs has been reported to be limited,²⁴ which was also observed in our expansion cultures. Furthermore, preliminary data indicate that hMSCs are also subject to continuous telomere erosion (data not shown).

Our observation that hMSCs are telomerase-negative implicates that these cells are different from other adult stem cells, at least with respect to their telomerase status. Thus, it raises the question whether cells with the described phenotype and with the capability to differentiate into multiple cell types should be referred to as mesenchymal stem cells instead of fibroblast-like stromal cells. In contrast, more primitive MAPCs have recently been reported to maintain telomere length upon cell expansion. This appears to be associated with extended growth potential, although the telomerase status has yet to be defined in human

MAPCs.²⁵ Therefore, we cannot exclude that a rare subpopulation of bone marrow stromal cells is indeed telomerase positive, but which might be below the level of sensitivity of the TRAP assay. The speculation that the frequency of such a cell is in the range of one in 10⁷ or one in 10⁸ is in agreement with this possibility.⁷

Assuming that telomerase activity is associated with self-renewal and is a feature of stem cells, it could be useful to identify bone marrow stromal cells on the basis of their telomerase status. Alternatively, ectopic transfer of the catalytic component hTERT could circumvent the critical technical barriers that result from induction of replicative senescence upon large-scale expansion of stromal cells.^{26,27}

Acknowledgements

We thank Ilona Skatulla for excellent technical assistance and Professor R Mertelsmann for his continuous support. This work was supported by grants from the Deutsche Forschungsgemeinschaft (SFB 364) and from the 5th Framework Programme of the European Union (QLG1-CT-1999-01341).

References

- 1 Caplan AI, Bruder SP. Mesenchymal stem cells: building blocks for molecular medicine in the 21st century. *Trends Mol Med* 2001; **7**: 259–264.
- 2 Caplan AI. Mesenchymal stem cells. *J Orthop Res* 1991; **9**: 641–650.
- 3 Prockop DJ. Marrow stromal cells as stem cells for nonhematopoietic tissues. *Science* 1997; **276**: 71–74.
- 4 Pittenger MF, Mackay AM, Beck SC, Jaiswal RK, Douglas R, Mosca JD *et al*. Multilineage potential of adult human mesenchymal stem cells. *Science* 1999; **284**: 143–147.
- 5 Deans RJ, Moseley AB. Mesenchymal stem cells: biology and potential clinical uses. *Exp Hematol* 2000; **28**: 875–884.
- 6 Colter DC, Class R, DiGirolamo CM, Prockop DJ. Rapid expansion of recycling stem cells in cultures of plastic-adherent cells from human bone marrow. *Proc Natl Acad Sci USA* 2000; **97**: 3213–3218.
- 7 Reyes M, Verfaillie CM. Characterization of multipotent adult progenitor cells, a subpopulation of mesenchymal stem cells. *Ann NY Acad Sci* 2001; **938**: 231–233; discussion 233–235.
- 8 Jiang Y, Jahagirdar BN, Reinhardt RL, Schwartz RE, Keene CD, Ortiz-Gonzalez XR *et al*. Pluripotency of mesenchymal stem cells derived from adult marrow. *Nature* 2002; **418**: 41–49.
- 9 Collins K. Mammalian telomeres and telomerase. *Curr Opin Cell Biol* 2000; **12**: 378–383.
- 10 Harley CB, Futcher AB, Greider CW. Telomeres shorten during ageing of human fibroblasts. *Nature* 1990; **345**: 458–460.
- 11 Allsopp RC, Chang E, Kashefi-Azham M, Rogaeve EI, Piatyszek MA, Shay JW *et al*. Telomere shortening is associated with cell division *in vitro* and *in vivo*. *Exp Cell Res* 1995; **220**: 194–200.
- 12 Bodnar AG, Ouellette M, Frolkis M, Holt SE, Chiu CP, Morin GB *et al*. Extension of life-span by introduction of telomerase into normal human cells. *Science* 1998; **279**: 349–352.
- 13 Martens UM, Chavez EA, Poon SS, Schmoor C, Lansdorp PM. Accumulation of short telomeres in human fibroblasts prior to replicative senescence. *Exp Cell Res* 2000; **256**: 291–299.
- 14 Kim NW, Piatyszek MA, Prowse KR, Harley CB, West MD, Ho PL *et al*. Specific association of human telomerase activity with immortal cells and cancer. *Science* 1994; **266**: 2011–2015.
- 15 Thomson JA, Itskovitz-Eldor J, Shapiro SS, Waknitz MA, Swiergiel JJ, Marshall VS *et al*. Embryonic stem cell lines derived from human blastocysts. *Science* 1998; **282**: 1145–1147.
- 16 Amit M, Carpenter MK, Inokuma MS, Chiu CP, Harris CP, Waknitz MA *et al*. Clonally derived human embryonic stem cell lines maintain pluripotency and proliferative potential for prolonged periods of culture. *Dev Biol* 2000; **227**: 271–278.

- 17 Harle-Bachor C, Boukamp P. Telomerase activity in the regenerative basal layer of the epidermis in human skin and in immortal and carcinoma-derived skin keratinocytes. *Proc Natl Acad Sci USA* 1996; **93**: 6476–6481.
- 18 Kolquist KA, Ellisen LW, Counter CM, Meyerson M, Tan LK, Weinberg RA *et al*. Expression of TERT in early premalignant lesions and a subset of cells in normal tissues. *Nat Genet* 1998; **19**: 182–186.
- 19 Chiu CP, Dragowska W, Kim NW, Vaziri H, Yui J, Thomas TE *et al*. Differential expression of telomerase activity in hematopoietic progenitors from adult human bone marrow. *Stem Cells* 1996; **14**: 239–248.
- 20 Engelhardt M, Kumar R, Albanell J, Pettengell R, Han W, Moore MA. Telomerase regulation, cell cycle, and telomere stability in primitive hematopoietic cells. *Blood* 1997; **90**: 182–193.
- 21 Morrison SJ, Prowse KR, Ho P, Weissman IL. Telomerase activity in hematopoietic cells is associated with self-renewal potential. *Immunity* 1996; **5**: 207–216.
- 22 Colter DC, Sekiya I, Prockop DJ. Identification of a subpopulation of rapidly self-renewing and multipotential adult stem cells in colonies of human marrow stromal cells. *Proc Natl Acad Sci USA* 2001; **98**: 7841–7845.
- 23 Sawant SG, Gregoire V, Dhar S, Umbricht CB, Cvilic S, Sukumar S *et al*. Telomerase activity as a measure for monitoring radio-curability of tumor cells. *FASEB J* 1999; **13**: 1047–1054.
- 24 Bruder SP, Jaiswal N, Haynesworth SE. Growth kinetics, self-renewal, and the osteogenic potential of purified human mesenchymal stem cells during extensive subcultivation and following cryopreservation. *J Cell Biochem* 1997; **64**: 278–294.
- 25 Reyes M, Lund T, Lenvik T, Aguiar D, Koodie L, Verfaillie CM. Purification and *ex vivo* expansion of postnatal human marrow mesodermal progenitor cells. *Blood* 2001; **98**: 2615–2625.
- 26 Shi S, Gronthos S, Chen S, Reddi A, Counter CM, Robey PG *et al*. Bone formation by human postnatal bone marrow stromal stem cells is enhanced by telomerase expression. *Nat Biotechnol* 2002; **20**: 587–591.
- 27 Simonsen JL, Rosada C, Serakinci N, Justesen J, Stenderup K, Rattan SI *et al*. Telomerase expression extends the proliferative lifespan and maintains the osteogenic potential of human bone marrow stromal cells. *Nat Biotechnol* 2002; **20**: 592–596.