

RESEARCH ARTICLE

Open Access



Lactate dehydrogenase and susceptibility to deterioration of mild COVID-19 patients: a multicenter nested case-control study

Jichan Shi^{1†}, Yang Li^{2†}, Xian Zhou^{2†}, Qiran Zhang^{2†}, Xinchun Ye¹, Zhengxing Wu¹, Xiangao Jiang¹, Hongying Yu³, Lingyun Shao², Jing-Wen Ai², Haocheng Zhang², Bin Xu², Feng Sun^{2*} and Wenhong Zhang^{2,4}

Abstract

Background: Coronavirus disease 2019 (COVID-19) has infected more than 4 million people within 4 months. There is an urgent need to properly identify high-risk cases that are more likely to deteriorate even if they present mild diseases on admission.

Methods: A multicenter nested case-control study was conducted in four designated hospitals in China enrolling confirmed COVID-19 patients who were mild on admission. Baseline clinical characteristics were compared between patients with stable mild illness (stable mild group) and those who deteriorated from mild to severe illness (progression group).

Results: From Jan 17, 2020, to Feb 1, 2020, 85 confirmed COVID-19 patients were enrolled, including 16 in the progression group and 69 in the stable mild group. Compared to stable mild group ($n = 69$), patients in the progression group ($n = 16$) were more likely to be older, male, presented with dyspnea, with hypertension, and with higher levels of lactate dehydrogenase and c-reactive protein. In multivariate logistic regression analysis, advanced age (odds ratio [OR], 1.012; 95% confidence interval [CI], 1.020–1.166; $P = 0.011$) and the higher level of lactate dehydrogenase (OR, 1.012; 95% CI, 1.001–1.024; $P = 0.038$) were independently associated with exacerbation in mild COVID-19 patients.

Conclusion: Advanced age and high LDH level are independent risk factors for exacerbation in mild COVID-19 patients. Among the mild patients, clinicians should pay more attention to the elderly patients or those with high LDH levels.

Keywords: COVID-19, Severe pneumonia, Lactate dehydrogenase, SARS-CoV-2

Background

Coronavirus diseases 2019 (COVID-19) is now officially a pandemic [1]. As of April 1, 2020, the total number of confirmed COVID-19 cases has surpassed 820,000 cases [2]. Research of clinical characteristics of COVID-19 patients began at January, leading by Huang and his colleagues [3]. They reported that more than half of COVID-19 patients developed dyspnea at 8 days following the

initial onset of illness, while the onset of acute respiratory distress syndrome (ARDS) had a median day of 9 days, just 1 day more than the onset of dyspnea, which may indicate a rapid diseases progression. Despite the fact that COVID-19 patients have mild symptoms and signs in their early stage, about 8–30% of patients would eventually develop severe illness. The 28-day mortality rate of critically ill patients is over 60% [4]. By far, disease progression in COVID-19 seems to be unpredictable due to our limited understanding of the natural history of the disease. There is an urgent need to properly identify high-risk cases that are more likely to deteriorate even if they present mild diseases on admission.

* Correspondence: aaronsf1125@126.com

[†]Jichan Shi, Yang Li, Xian Zhou and Qiran Zhang contributed equally to this work.

²Departments of Infectious Diseases, Huashan Hospital, Fudan University, Shanghai 200040, China

Full list of author information is available at the end of the article



© The Author(s). 2020 **Open Access** This article is licensed under a Creative Commons Attribution 4.0 International License, which permits use, sharing, adaptation, distribution and reproduction in any medium or format, as long as you give appropriate credit to the original author(s) and the source, provide a link to the Creative Commons licence, and indicate if changes were made. The images or other third party material in this article are included in the article's Creative Commons licence, unless indicated otherwise in a credit line to the material. If material is not included in the article's Creative Commons licence and your intended use is not permitted by statutory regulation or exceeds the permitted use, you will need to obtain permission directly from the copyright holder. To view a copy of this licence, visit <http://creativecommons.org/licenses/by/4.0/>. The Creative Commons Public Domain Dedication waiver (<http://creativecommons.org/publicdomain/zero/1.0/>) applies to the data made available in this article, unless otherwise stated in a credit line to the data.

In light of these uncertainties, we enrolled patients who were evaluated as mild COVID-19 on admission from a prospective cohort in four hospitals. Some of the patients deteriorated to severe diseases. We then compared the baseline characteristics between the stable mild group and progression group, aiming to assess the potential markers to predict whether the disease will progress or not.

Methods

Study design and participants

This was a multicenter nested case-control study involving four designated hospitals in China for the treatment of COVID-19 patients. These four hospitals were located in Wenzhou, Wuhan, Huaihua, and Shanghai. The study was approved by the Ethics Committees of Huashan Hospital, Fudan University. All patients who participated in the study gave informed consent.

From Jan 17, 2020, to Feb 1, 2020, we enrolled all 143 patients with confirmed COVID-19 according to World Health Organization (WHO) interim guidance [5] in the 4 participated hospitals. The severity or clinical condition of COVID-19 patients was classified into pneumonia, severe pneumonia, ARDS, sepsis, or septic shock according to the WHO guideline [5]. In our analysis, we defined the patients with pneumonia as mild cases and patients with severe pneumonia, ARDS, sepsis, or septic shock as severe cases. Nineteen COVID-19 patients presented with severe cases on admission were excluded. Of

the remaining 124 patients, pneumonia progressed to severe cases in 16 patients while ongoing mild diseases (for at least 2 weeks) were reported in 69 patients as of Feb 6. Thirty-nine patients were excluded from this study because of the short duration of follow-up (less than 2 weeks). Finally, we enrolled 85 COVID-19 patients in this study. Patients with or without progression to severe cases by Feb 6 were divided in the progression group or the stable mild group, respectively (Fig. 1). All enrolled patients were followed up until April 1.

Data collection

The medical records of patients were analyzed by the research team of Huashan Hospital. We obtained epidemiological, demographic, clinical, laboratory, and radiology data from patients’ medical records. The data were reviewed by a trained team of physicians. The date of disease onset was defined as the day when the symptom was noticed. Symptoms, vital signs, laboratory values, chest CT scan, and treatment measures during the hospital stay were collected.

Statistical analysis

Categorical variables were described as frequency rates and percentages, and continuous variables were described using mean (standard deviation, SD) or median (interquartile range, IQR). Continuous variables were compared using *t* tests, and categorical variables were compared using the χ^2 test or the Fisher exact test. The

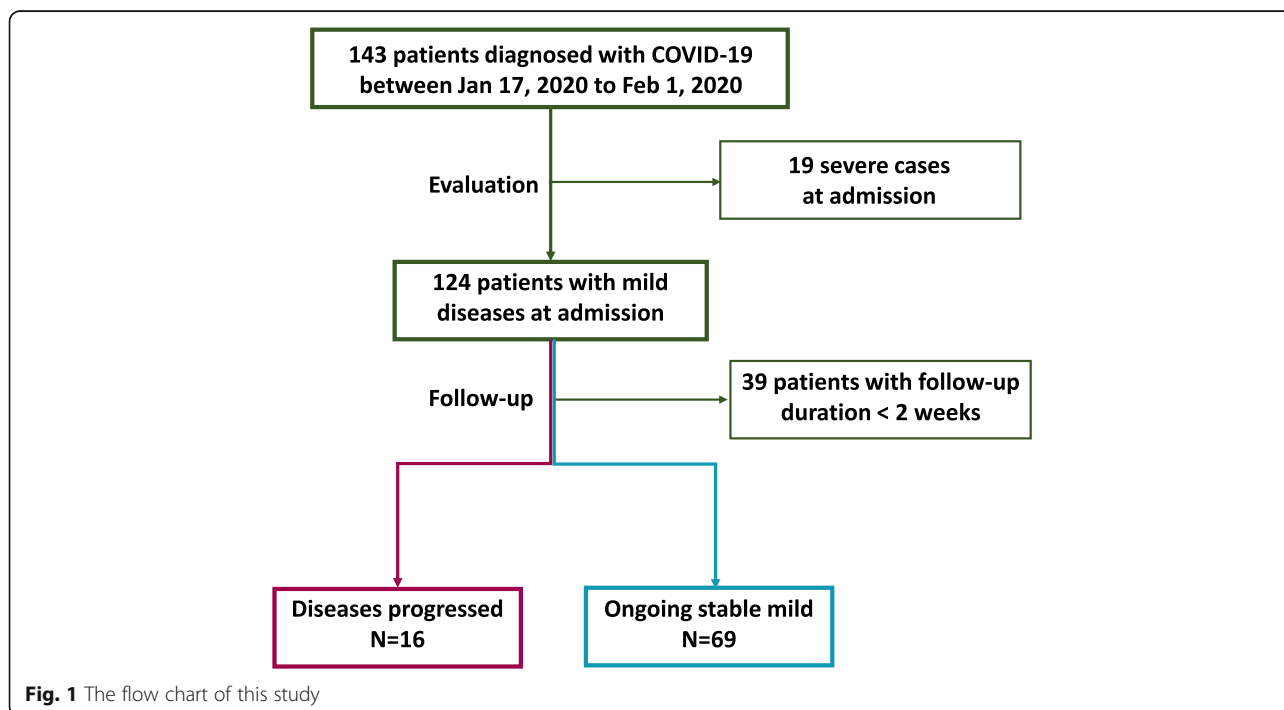


Fig. 1 The flow chart of this study

Table 1 Baseline characteristic of study population

	All patients (n = 85)	Stable mild group (n = 69)	Progression group (n = 16)	P value
Age, years				< 0.001
Mean ± SD	46.6 ± 15.0	43.9 ± 14.0	58.2 ± 14.0	
Median, range	46 (15–81)	45 (15–80)	62 (30–81)	
Sex, Male	49 (57.6)	35 (50.7)	14 (87.5)	0.010
Symptoms				
Fever	71 (83.5)	57 (82.5)	14 (87.5)	0.635
Cough	47 (56.0)	38 (55.1)	9 (60.0)	0.728
Expectoration	29 (34.9)	22 (32.4)	7 (46.7)	0.293
Fatigue	39 (45.9)	33 (47.8)	6 (37.6)	0.455
Dyspnea	10 (11.8)	5 (7.2)	5 (31.3)	0.018
Diarrhea	10 (11.9)	9 (13.2)	1 (6.3)	0.679
Headache	5 (6.0)	4 (5.9)	1 (6.3)	1.000
Laboratory examination				
White blood count	4.8 ± 1.9	4.8 ± 1.8	5.1 ± 2.2	0.602
Neutrophils	3.2 ± 1.6	3.1 ± 1.6	3.5 ± 1.5	0.380
Lymphocytes	1.2 ± 0.7	1.2 ± 0.6	1.1 ± 1.2	0.418
Hemoglobin	135.7 ± 13.8	136.6 ± 13.6	132.3 ± 14.6	0.272
Platelets	184.6 ± 68.1	190.2 ± 73.0	160.5 ± 33.0	0.117
ALT	30.0 ± 68.1	29.0 ± 19.5	38.0 ± 14.1	0.517
AST	31.3 ± 18.8	29.7 ± 19.5	38.0 ± 14.1	0.114
Creatine	69.2 ± 22.7	64.8 ± 14.9	87.9 ± 37.8	0.029
Creatine kinase	150.4 ± 236.9	136.1 ± 241.7	212.2 ± 211.0	0.250
Troponin T	0.030 ± 0.309	0.024 ± 0.017	0.053 ± 0.054	0.052
Lactate dehydrogenase	240.1 ± 84.3	222.4 ± 73.8	316.4 ± 86.4	< 0.001
NT-proBNP	85.7 ± 200.0	61.7 ± 79.3	189.6 ± 423.5	0.247
C-reactive protein	23.6 ± 25.7	18.1 ± 20.2	47.0 ± 33.7	0.004
Radiology manifestation				0.528
Normal	4 (4.7)	4 (5.8)	0 (0%)	
Unilateral involved	8 (9.4)	7 (10.1)	1 (6.3)	
Bilateral involved	73 (85.9)	58 (84.1)	15 (93.5)	
Chronic medical illness				
Hypertension	26 (30.6)	17 (24.6)	9 (56.3)	0.032
Coronary heart disease	1 (1.2)	1 (1.4)	0 (0%)	1.000
Diabetes mellitus	11 (12.9)	9 (13.0)	2 (12.5)	1.000
Autoimmune disorders	1 (1.2)	1 (1.4)	0 (0%)	1.000
Chronic liver diseases	9 (9.4)	8 (11.6)	0 (0%)	0.174

Data are shown as n (%) or mean ± SD unless specified otherwise

Abbreviations: SD standard deviation, ALT alanine aminotransferase, AST aspartate aminotransferase, NT-proBNP N-terminal pro-B-type natriuretic peptide

variates with *P* value less than 0.05 were included into multivariate logistic regression model to determine the potential independent factors. All statistical analyses were performed using SPSS (Statistical Package for the Social Sciences) version 22.0 software (SPSS Inc). *P* value less than 0.05 was considered statistically significant.

Results

As described in the “Methods” section, this nested case-control study enrolled 85 hospitalized patients with confirmed COVID-19, including 69 in the stable mild group and 16 in the progression group (Table 1). The mean age was 46.6 years (SD, 15.0), and 49 (57.6%) were male. The median duration from the first symptom to hospital

Table 2 Multivariate logistic regression analysis of potential factors for disease progression

Covariate	Odds ratio	95% CI	P value
Age	1.090	1.020–1.166	0.011
Female	0.113	0.014–1.571	0.113
Hypertension	0.212	0.521–18.884	0.212
Dyspnea	2.319	0.268–20.067	0.445
Creatine	1.032	0.977–1.090	0.264
Lactate dehydrogenase	1.012	1.001–1.024	0.038
C-reactive protein	1.012	0.979–1.046	0.494

Abbreviation: CI confidential interval

admission was 5 days (IQR 4–7 days). Of 85 patients, 36 (42.4%) had 1 or more coexisting medical conditions. Hypertension (26 [30.6%]), diabetes (11 [12.9%]), and chronic liver diseases (9 [9.4%]) were the most common coexisting conditions. None reported chronic lung diseases, malignant tumor, and chronic renal diseases in this cohort. The most common symptom before admission was fever (71 [83.5%]), followed by dry cough (47 [56.0%]), fatigue (39 [45.9%]), and expectoration (29 [34.9%]). Dyspnea (10 [11.8%]) was less seen in the patients because all enrolled patients were mild at admission. Also, there were 10 (11.9%) patients initially presented with diarrhea. Two cases (2.4%) reported to be asymptomatic at admission. Radiology abnormalities were observed in 81 (95.9%) patients, 73 of whom showing bilateral pneumonia. CT scan or X-ray was characterized by multiple peripheral ground-glass opacities.

In our cohort, pneumonia progressed in 16 patients. The median time from the onset of illness to severe pneumonia was 8.5 days (IQR, 4.25–10.75 days). When comparing the characteristics on admission between two groups (Table 1), we found that patients in the progression group were more likely to be older (58.2 ± 14.0 vs. 43.9 ± 14.0 , $p < 0.001$). Other potential risk factors

included being males (87.5% vs. 50.7%, $p = 0.010$), presence of dyspnea (13.2% vs. 6.3%, $p = 0.018$), hypertension (56.3% vs. 24.6%, $p = 0.032$), the higher level of lactate dehydrogenase (LDH) (316.4 ± 86.4 vs. 222.4 ± 73.8 , $p < 0.001$), and C-reactive protein (47.0 vs. 18.1, $p = 0.004$). Radiology manifestation was not significantly associated with poor outcome.

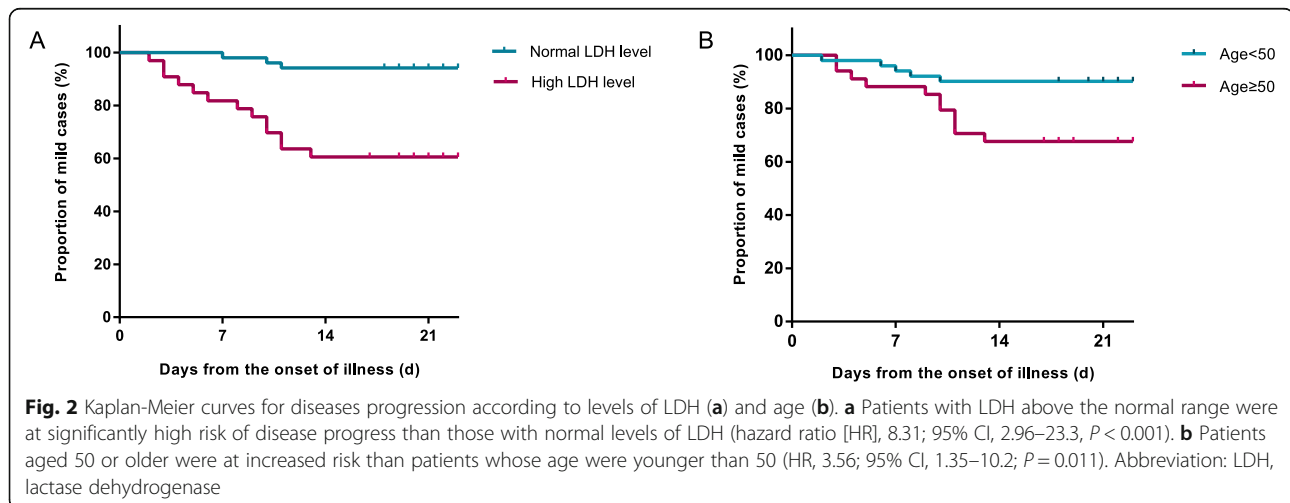
Upon adjustment for potential confounding factors with the use of multivariate logistic regression analysis, two independent factors were associated with disease progression: advanced age (odds ratio [OR], 1.012; 95% confidence interval [CI], 1.020–1.166; $P = 0.011$) and the higher level of LDH (OR, 1.012; 95% CI, 1.001–1.024; $P = 0.038$) (Table 2).

Further, patients were stratified by the level of LDH and age. Compared with patients who had normal levels of LDH at admission, those with LDH above the normal range were at significantly high risk of disease progress (hazard ratio [HR], 8.31; 95% CI, 2.96–23.3, $P < 0.001$) (Fig. 2a). Besides, patients aged 50 or older were at increased risk as well (HR, 3.56; 95% CI, 1.35–10.2; $P = 0.011$) (Fig. 2b). As of April 1, all patients in stable mild group and 68.7% (11/16) in the progression group were cured and discharged; the remaining 5 patients in the progression group were still hospitalizing in the ICU.

Discussion

This is the first known analysis to focus on identifying high-risk COVID-19 patients for developing severe illness. To identify a small portion of high-risk patients among the whole population of mild patients, we excluded those who presented with severe illness on admission, thus only comparing patients with stable mild illness and those who deteriorated from mild to severe illness.

The initial symptoms and signs in COVID-19 patients were usually very mild. However, as the disease progresses, some patients' symptoms would deteriorate.



According to public data of China CDC and previous studies, about 8–30% of patients would eventually develop severe illness and about 1–11% of patients would die [3]. Guan et al. [6] reported that 40% of ICU patients were non-severe on admission. With proactive screening of close contacts and quicker diagnostic procedures, this proportion may be even higher. Comparing the mild cases with or without deterioration will help clinicians identifying potentially critical patients earlier, allocating medical resources more reasonably, paying more attention to these patients, thus giving necessary interventions as early as possible. Previous studies have uncovered that there were numerous disparities in background illness, vital signs, and laboratory parameters between mild and severe patients, including lymphocytes, prothrombin time, creatine kinase, LDH, and so on [3, 6, 7]. However, which parameter dynamic change that initiates earlier remains unanswered.

LDH is a cytoplasmic glycolytic enzyme found in almost every tissue. Its elevation generally indicates tissue damage. Raised LDH was a common findings in patients infected with MERS-CoV [8–10], H7N9 [11, 12], and H5N1 [13]. It was reported to be an independent factor of mortality for patients with severe acute respiratory syndrome [14] and H1N1 infection [15]. It was also one of the biomarkers most strongly associated with ARDS mortality [16, 17]. Our finding of increased LDH in the early phase of severe COVID-19 cases suggested possible subclinical tissue damage. Although the virus binds to human angiotensin converting enzyme 2 (ACE2) receptor in the lung [18, 19], which explains why the lungs are the first organs affected, but as the disease progresses, various cytokine abnormalities and multiple organs dysfunction can be found in severe patients [3, 7], indicating systemic organ damage caused by the excessive activation of the immune system. LDH isoenzymes test can further help to locate damaged tissues or organs.

In this study, the comparison between the two groups showed differences in gender, history of hypertension, dyspnea symptom, creatinine, and C-reactive protein levels. These systemic factors also support that the pathophysiology of critically ill patients might be the systemic activation of immune response. History of hypertension was relatively rare as a factor in disease progression for an infectious disease; however, it was widely reported to be associated with disease severity of COVID-2019 [6, 7]. This was thought to be related to the virus binding receptor. Structural analysis suggested that SARS-CoV-2 might be able to bind to the ACE2 receptor [18, 19], which shared some homology with ACE and played a role in the renin-angiotensin system. The influence of blood pressure on prognosis may be related to this, but the specific mechanism remains unknown.

This study had several limitations. First, we did not measure viral load and some patients lacked coagulation

function testing, which could be factors related to the severity of the disease. Second, we did not test the LDH isoenzymes due to limited resources. LDH isoenzyme analysis in the future may help to identify the source of increased LDH. Third, the sample size of our study is relatively small, but the multicenter and prospective nature of our study should reduce the bias and increase the generalizability.

Conclusions

In this multicenter nested case-control study, advanced age and high LDH level were independent risk factors for deterioration in mild COVID-19 patients. Among the mild patients, clinicians should pay more attention to the elderly patients or those with high LDH levels.

Abbreviations

ARDS: Acute respiratory distress syndrome; COVID-19: Coronavirus disease 2019; HR: Hazard ratio; IQR: Interquartile range; LDH: Lactate dehydrogenase; OR: Odds ratio; SD: Standard deviation

Acknowledgements

We thank all physicians that participated in this study for patient enrollment and follow-up and show the greatest appreciation to all health workers for their valuable input to the control of diseases.

Authors' contributions

Conception or design of the work: BX, FS, and WZ. Data collection and patient care: JS, XY, ZW, XJ, BX, HY, and LS. Data analysis and interpretation: JS, YL, XZ, QZ, LS, JA, and HZ. Drafting the article: JS, YL, XZ, and QZ. Critical revision of the article: BX, FS, and WZ. Final approval of the version to be published: All of the authors.

Funding

This study was not funded.

Availability of data and materials

The data that support the findings of this study are available from the corresponding author on reasonable request.

Ethics approval and consent to participate

An ethical approval was obtained from the Ethics Review Board of the Huashan Hospital, Fudan University (ethics approval registration number: KY2020-029). All patients who participated in the study gave informed consent, 49 patients signed written consent, and 36 patients gave oral consent.

Consent for publication

Not applicable.

Competing interests

All authors declare no competing interests.

Author details

¹Department of Infectious Diseases, Wenzhou Central Hospital, Wenzhou 325000, China. ²Departments of Infectious Diseases, Huashan Hospital, Fudan University, Shanghai 200040, China. ³Department of Infectious Disease, The First People's Hospital of Huaihua, Huaihua 418000, China. ⁴National Clinical Research Center for Aging and Medicine, Huashan Hospital, State Key Laboratory of Genetic Engineering, School of Life Science, Key Laboratory of Medical Molecular Virology (MOE/MOH) and Institutes of Biomedical Sciences, Shanghai Medical College, Fudan University, Shanghai 200040, China.

Received: 14 February 2020 Accepted: 14 May 2020

Published online: 03 June 2020

References

1. WHO: Coronavirus disease 2019 (COVID-19): situation report, 51. 2020.
2. WHO: Coronavirus disease 2019 (COVID-19): situation report, 72. 2020.
3. Huang C, Wang Y, Li X, Ren L, Zhao J, Hu Y, Zhang L, Fan G, Xu J, Gu X. Clinical features of patients infected with 2019 novel coronavirus in Wuhan, China. *Lancet*. 2020;395(10223):497–506.
4. Yang X, Yu Y, Xu J, Shu H, Xia J, Liu H, Wu Y, Zhang L, Yu Z, Fang M, et al. Clinical course and outcomes of critically ill patients with SARS-CoV-2 pneumonia in Wuhan, China: a single-centered, retrospective, observational study. *Lancet Respir Med*. 2020;8(5):475–81.
5. World Health Organization. Clinical management of severe acute respiratory infection when novel coronavirus (nCoV) infection is suspected: interim guidance, 25 January 2020. World Health Organization; 2020. <https://apps.who.int/iris/handle/10665/330854>. License: CC BY-NC-SA 3.0 IGO.
6. Guan W, Ni Z, Hu Y, Liang W, Ou C, He J, Liu L, Shan H, Lei C, Hui DS. Clinical characteristics of coronavirus disease 2019 in China. *New Engl J Med*. 2020;382(18):1708–20.
7. Wang D, Hu B, Hu C, Zhu F, Liu X, Zhang J, Wang B, Xiang H, Cheng Z, Xiong Y, et al. Clinical characteristics of 138 hospitalized patients with 2019 novel coronavirus–infected pneumonia in Wuhan, China. *JAMA*. 2020; 323(11):1061–9.
8. Assiri A, Al-Tawfiq JA, Al-Rabeeh AA, Al-Rabiah FA, Al-Hajjar S, Al-Barrak A, Flemban H, Al-Nassir WN, Balkhy HH, Al-Hakeem RF. Epidemiological, demographic, and clinical characteristics of 47 cases of Middle East respiratory syndrome coronavirus disease from Saudi Arabia: a descriptive study. *Lancet Infect Dis*. 2013;13(9):752–61.
9. Alsalamy S. Middle East respiratory syndrome: knowledge to date. *Crit Care Med*. 2015;43(6):1283–90.
10. Al Ghamdi M, Alghamdi KM, Ghandoori Y, Alzahrani A, Salah F, Alsulami A, Bawayan MF, Vaidya D, Perl TM, Sood G. Treatment outcomes for patients with Middle Eastern Respiratory Syndrome Coronavirus (MERS CoV) infection at a coronavirus referral center in the Kingdom of Saudi Arabia. *BMC Infect Dis*. 2016;16(1):174.
11. Shi J, Xie J, He Z, Hu Y, He Y, Huang Q, Leng B, He W, Sheng Y, Li F. A detailed epidemiological and clinical description of 6 human cases of avian-origin influenza A (H7N9) virus infection in Shanghai. *PLoS One*. 2013;8(10):e77651. <https://journals.plos.org/plosone/article?id=10.1371/journal.pone.0077651>.
12. Mei Z, Lu S, Wu X, Shao L, Hui Y, Wang J, Li T, Zhang H, Wang X, Yang F. Avian influenza A (H7N9) virus infections, Shanghai, China. *Emerg Infect Dis*. 2013;19(7):1179.
13. Oner AF, Bay A, Arslan S, Akdeniz H, Sahin HA, Cesur Y, Epcacan S, Yilmaz N, Deger I, Kizilyildiz B. Avian influenza A (H5N1) infection in eastern Turkey in 2006. *New Engl J Med*. 2006;355(21):2179–85.
14. Choi KW, Chau TN, Tsang O, Tso E, Chiu MC, Tong WL, Lee PO, Ng TK, Ng WF, Lee KC. Outcomes and prognostic factors in 267 patients with severe acute respiratory syndrome in Hong Kong. *Ann Intern Med*. 2003;139(9): 715–23.
15. Xi X, Xu Y, Jiang L, Li A, Duan J, Du B, Chinese CCCT. Hospitalized adult patients with 2009 influenza A (H1N1) in Beijing, China: risk factors for hospital mortality. *BMC Infect Dis*. 2010;10(1):256.
16. Terpstra ML, Aman J, van Nieuw Amerongen GP, Groeneveld AJ. Plasma biomarkers for acute respiratory distress syndrome: a systematic review and meta-analysis. *Crit Care Med*. 2014;42(3):691–700.
17. Hoebler SH, Oudemans-van Straaten HM, Groeneveld AJ. Albumin rather than C-reactive protein may be valuable in predicting and monitoring the severity and course of acute respiratory distress syndrome in critically ill patients with or at risk for the syndrome after new onset fever. *BMC Pulm Med*. 2015;15(1):22.
18. Zhou P, Yang X, Wang X, Hu B, Zhang L, Zhang W, Si H, Zhu Y, Li B, Huang C. A pneumonia outbreak associated with a new coronavirus of probable bat origin. *Nature*. 2020;579(7798):270–3.
19. Wrapp D, Wang N, Corbett KS, Goldsmith JA, Hsieh C, Abiona O, Graham BS, McLellan JS. Cryo-EM structure of the 2019-nCoV spike in the prefusion conformation. *Science*. 2020;367(6483):1260–3.

Publisher's Note

Springer Nature remains neutral with regard to jurisdictional claims in published maps and institutional affiliations.

Ready to submit your research? Choose BMC and benefit from:

- fast, convenient online submission
- thorough peer review by experienced researchers in your field
- rapid publication on acceptance
- support for research data, including large and complex data types
- gold Open Access which fosters wider collaboration and increased citations
- maximum visibility for your research: over 100M website views per year

At BMC, research is always in progress.

Learn more [biomedcentral.com/submissions](https://www.biomedcentral.com/submissions)

