

SCIENTIFIC REPORTS



OPEN

Land use and land cover change effect on surface temperature over Eastern India

Partha Pratim Gogoi¹, V. Vinoj¹, D. Swain¹, G. Roberts², J. Dash² & S. Tripathy³

Land use and land cover (LULC) change has been shown to have significant effect on climate through various pathways that modulate land surface temperature and rainfall. However, few studies have illustrated such a link over the Indian region using observations. Through a combination of ground, satellite remote sensing and reanalysis products, we investigate the recent changes to land surface temperature in the Eastern state of Odisha between 1981 and 2010 and assess its relation to LULC. Our analysis reveals that the mean temperature of the state has increased by $\sim 0.3^\circ\text{C}$ during the past three decades with the most accelerated warming ($\sim 0.9^\circ\text{C}$) occurring during the recent decade (2001 to 2010). Our study shows that 25 to 50% of this observed overall warming is associated with LULC. Further we observe that the spatial pattern of LULC changes matches well with the independently estimated warming associated with LULC suggesting a physical association between them. This study also reveals that the largest changes are linked to changing vegetation cover as evidenced by changes to both LULC classes and normalized difference vegetation index (NDVI). Our study shows that the state has undergone an LULC induced warming which accounts for a quarter of the overall temperature rise since 2001. With the expected expansion of urban landscape and concomitant increase in anthropogenic activities along with changing cropping patterns, LULC linked changes to surface temperature and hence regional climate feedback over this region necessitates additional investigations.

The surface temperatures are increasing globally as a consequence of anthropogenic climate change. However, it is known that observed changes are a result of both climate forcing and numerous other feedbacks including LULC. The LULC could change as a response to climate and also act as a feedback. In addition to these natural forcing and feedback cycles, there are also additional aspects that are linked to anthropogenic activities. This results in further modification to the LULC and meteorological responses thereupon^{1–10}. These LULC changes and their effects are mostly discernible over regions having higher population density, industrialization, urbanization, deforestation, agricultural diversification etc. Thus, the most visible effect of anthropogenic activities regionally and locally are changes in the LULC which modifies the surface energy balance which in turn affects the surface temperature altering the region's micro-climate^{5,8,11–17}.

The changes in LULC also modulate the incidence of heat/cold waves, clouds and rainfall patterns^{18–24}. In addition, LULC change have also been linked to atmospheric aerosol emissions^{20,25,26} which can modify the surface temperature through both direct and indirect effects, thereby modulating rainfall which can also result in droughts or floods through changes to extreme events under certain favorable circumstances¹⁸.

Over the Indian region, there are only a few scientific investigations that have attempted to discern LULC induced temperature changes, but they are either limited to the major metropolitan cities^{6,11,20,23,27–33} or have only focused on aspects related to urbanization^{3,4,34–38}. For example, the surface temperature over western India is found to be warming by $\sim 0.13^\circ\text{C}/\text{decade}$ due to the combined effect of greenhouse gases and LULC change of which $\sim 50\%$ was attributed to LULC change²⁷. Also, in 2001 an area covering 26.4% of New Delhi had a diurnal temperature range (DTR) below 11°C whereas in 2011 65.3% of New Delhi had a DTR below 11°C which was attributed to the increase in built up area by 53%^{24,29,31,39,40}. Furthermore, the LULC has also been linked to Indian monsoon rainfall changes^{18,25}. Studies linking LULC to surface temperature changes are limited over Eastern India though this region is among the most rapidly changing landscape over the entire Indian region⁴¹. The region

¹School of Earth, Ocean and Climate Sciences, Indian Institute of Technology Bhubaneswar, Bhubaneswar, Odisha, 752050, India. ²Geography and Environmental Science, University of Southampton, Southampton, SO171BJ, UK. ³Department of Geology and Geophysics, Indian Institute of Technology Kharagpur, Kharagpur, India. Correspondence and requests for materials should be addressed to V.V. (email: vinoj@iitbbs.ac.in)

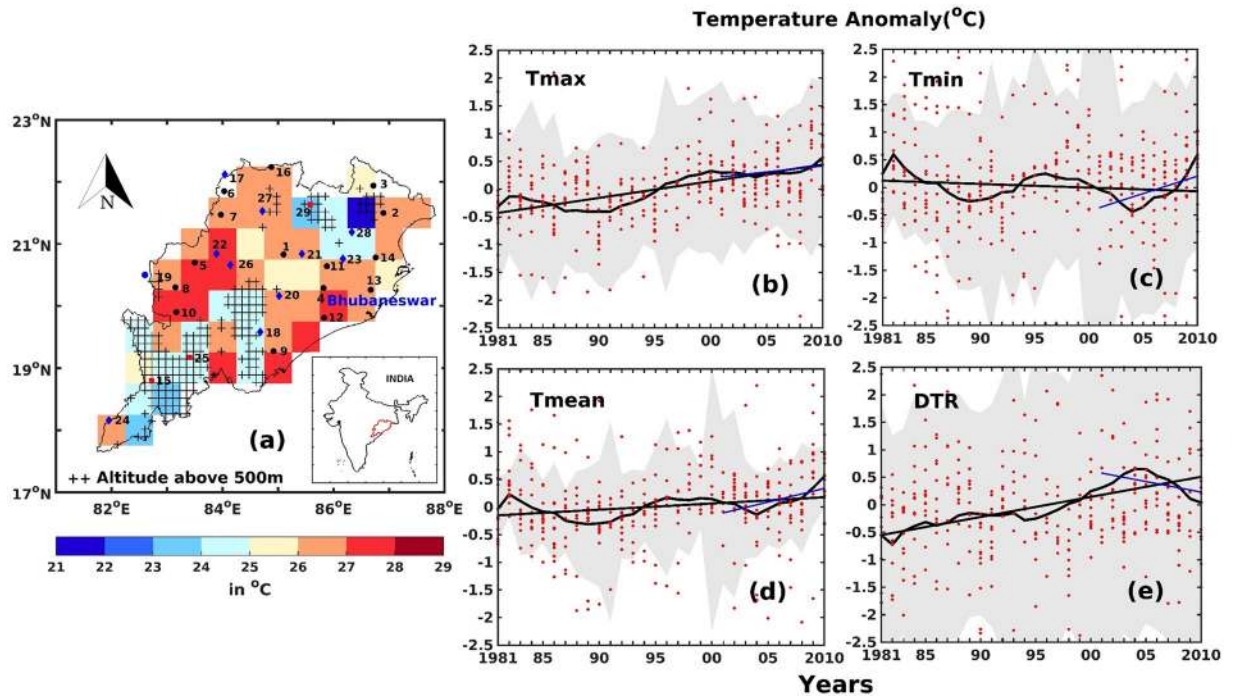


Figure 1. (a) The climatological annual mean surface temperature ($^{\circ}\text{C}$) over Odisha during the period 1981 to 2010 (Source: University of Delaware). The inset map of the study area shows Odisha state with locations of all IMD observation sites (black) along with district headquarters (blue). The striped region represents areas that lie 500 m above mean sea level (Source: NGDC, NOAA). The numbers on the spatial plot represent serial numbers of the stations. (details are given in Supplementary Table S3) (b–e) shows the time series (10 point running mean) of the maximum, minimum, mean temperature and diurnal temperature range anomaly for all stations (averaged) within the plains (Source: IMD station datasets. See Table S3). The grey shaded region in (b–e) represent standard deviation. The map was generated using MATLAB 2015b, www.mathworks.com.

is also rich in mineral deposits and its continued exploitation for mineral wealth has accelerated LULC change in the past few decades. In addition, Odisha being one of the most natural disaster prone regions of India, a very few studies have investigated the relationship between LULC change and surface temperature, heat waves, extreme rainfall etc.

In this paper, we investigate the surface temperature changes over the state of Odisha using long term ground, satellite and reanalysis datasets and explore its relation to LULC changes. We investigate whether the surface temperature has increased and, if so, whether this is in response to changes in land cover and/or changes in climate. Then multiple line of evidences are used to link LULC to observed spatial and temporal pattern of temperature. This would help in establishing changes associated with local activities such as LULC and those due to regional and global climate change.

Results and Discussion

Trends in surface temperature. The Indian subcontinent is characterized by large spatio-temporal variability in meteorological parameters displaying large annual, inter-annual, seasonal and decadal variability in surface temperature. In this section, the observed trends in temperatures both on an annual and inter-decadal basis are discussed. It is found that the state of Odisha had undergone a warming of $\sim 0.3^{\circ}\text{C}$ during 1981 to 2010 and that the trend in surface temperature is positive irrespective of the meteorological station location (coastal or non-coastal) and altitude (high altitude or the plains). These trends were found to be statistically significant at 95% confidence level in most of the cases (Fig. 1 and Supplementary Information, Table S1). The temperatures were also found to have large inter-decadal variability. A separation into three decades (starting 1981, 1991 and 2001) shows that during the first decade (1981 to 1990) the mean temperature for sites below 500 m above mean sea level (amsl) decreased by $\sim 0.7^{\circ}\text{C}$ whereas, in the subsequent decades (1991 to 2000 and 2001 to 2010) an increase in temperature of $\sim 1^{\circ}\text{C}$ and $\sim 0.8^{\circ}\text{C}$ respectively was found (Fig. 2 and Table S1). Low values in the mean temperature trend are partly a consequence of differences in the maximum and minimum temperatures. For example, though maximum temperature was steadily increasing over the region, minimum temperature was found to be decreasing during 1981 to 1990. However, within these sub-periods, both of the recent decades show that minimum temperatures are increasing at different rates. It is evident that the recent two decades show a clear increase in both minimum ($\sim 1.2^{\circ}\text{C}$) and maximum ($\sim 0.13^{\circ}\text{C}$) temperatures which is reflected by the increasing mean temperature. However, the most interesting aspect is that the diurnal temperature range (DTR), which is observed to be increasing during the 1980's by $\sim 1.16^{\circ}\text{C}$ has decreased by $\sim 0.46^{\circ}\text{C}$ and $\sim 1.19^{\circ}\text{C}$ between the second (1991–2000) and third (2001–2010) decades respectively in areas below 500 m amsl (Table S1, Fig. 1b–e).

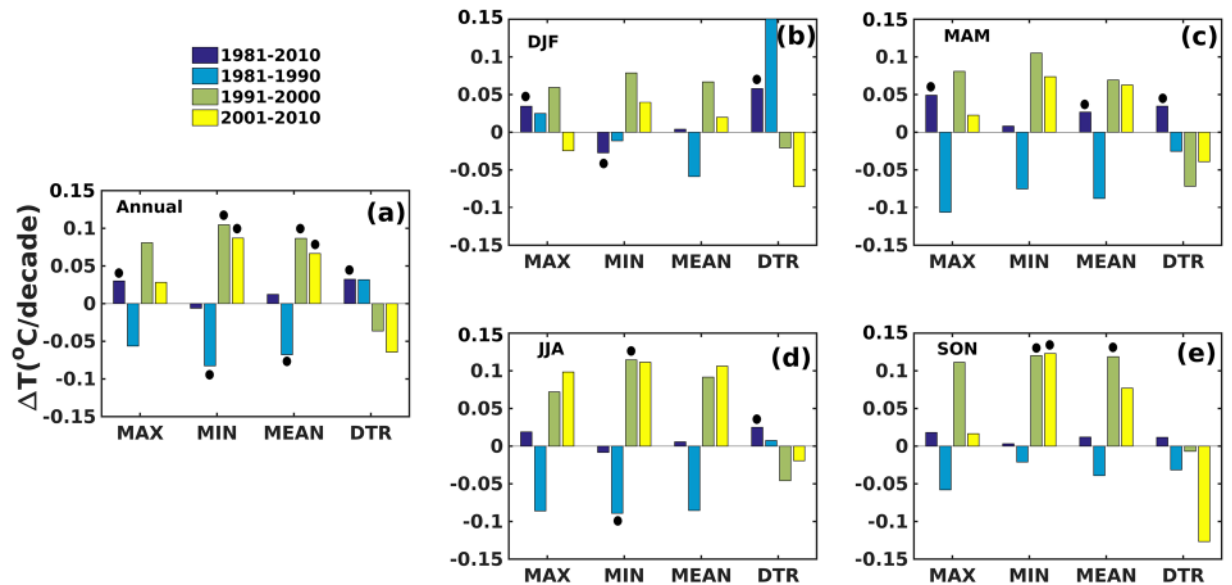


Figure 2. Decadal temperature trends over Odisha (a) Annual (b) December-January-February (DJF) (c) March-April-May (MAM) (d) June-July-August (JJA) (e) September-October-November (SON) (Source: IMD station datasets below 500 m amsl). Black dots in the plot represent statistical significance at 95% confidence level. The map was generated using MATLAB 2015b, www.mathworks.com.

These indicate that the overall trends are larger for low altitude stations in comparison to those at higher altitudes. In order to determine whether these findings are spatially consistent across the entire state or result from urbanization/LULC signatures we have used gridded climate datasets from IMD, University of Delaware (UDel) and NCEP/NCAR Reanalysis-1. Also, to assess the impact of El-Nino/Southern Oscillation (ENSO) events, years with extreme ENSO events (1982, 1983, 1997 and 1998) were removed from the analysis. It may be mentioned that the results with and without ENSO years are consistent (Supplementary Information, Table S5). Overall, our analysis reveals that the surface temperatures over the state has been increasing since 1981 (Fig. 1b–e).

Seasonality of trends in surface temperature. We find that the observations and inferences made based on annual and decadal timescales are also applicable to seasonal timescales and indicate that the changes in temperature are forced on large spatial and temporal scales. Figure 2 indicates that between 1981 and 1990 the temperature reduced by 0.3 to 0.9 °C depending on season and this is evident both on annual and seasonal scales.

However, the region has warmed up since 1991 (−0.4 to 0.9 °C). It may be noted that analysis based on both gridded and station datasets show similar trends on cooling and warming during the first and subsequent two decades respectively. However the magnitude of the trends differ. The largest rate of increase in temperature is observed in the June to August (JJA) and September to November (SON) periods whilst the least is observed for December to February (DJF) period. Similar characteristics are also evident in the trends in maximum and minimum temperatures and that, irrespective of season, the minimum temperature is increasing at a much faster rate than the maximum temperature since 1991 (Fig. 2). Studies have shown that the rapid rate of change in minimum temperature over more than 70% of the global land surface could be linked to climate change⁴⁰. However, those changes arising out of LULC are expected to be more localized in space and we therefore explore these temperature changes and their spatial patterns to assess the potential influence of land use.

Spatial pattern of trends. Using the IMD gridded datasets, we find that the spatial pattern of the trends adhere to the inferences made using meteorological station datasets (Fig. 3).

Overall, the major finding is that between 1981 and 1990 a cooling trend is evident whereas the subsequent decades show the inverse to this. The spatial patterns and their temporal variability within different decades are similar for the average mean, minimum and maximum temperatures. In contrast, the diurnal temperature range (DTR) shows opposing trends with an increase during the decade starting 1981 and a decrease in the subsequent decades. In addition, the increase in minimum temperature is also more widespread spatially. This may indicate that the changes to surface temperature could be driven by climate change, overwhelming the LULC impacts. However, a warming trend is observed in the most recent decade over Odisha state and to determine whether this is linked to LULC change we utilize the widely used OMR technique which is detailed in the methodology section.

The role of LULC in the observed warming. The OMR was calculated at a spatial resolution of 0.5° for the whole state of Odisha which is shown in Fig. 4 for the different decades. The first decade since 1981 displays a declining trend in OMR of ~ -0.04 °C/year over the whole state. Though positive OMR are related to either urbanization or LULC linked changes, negative values are not directly related to these changes and could result from issues associated with the development of the reanalysis datasets that assimilate observations from

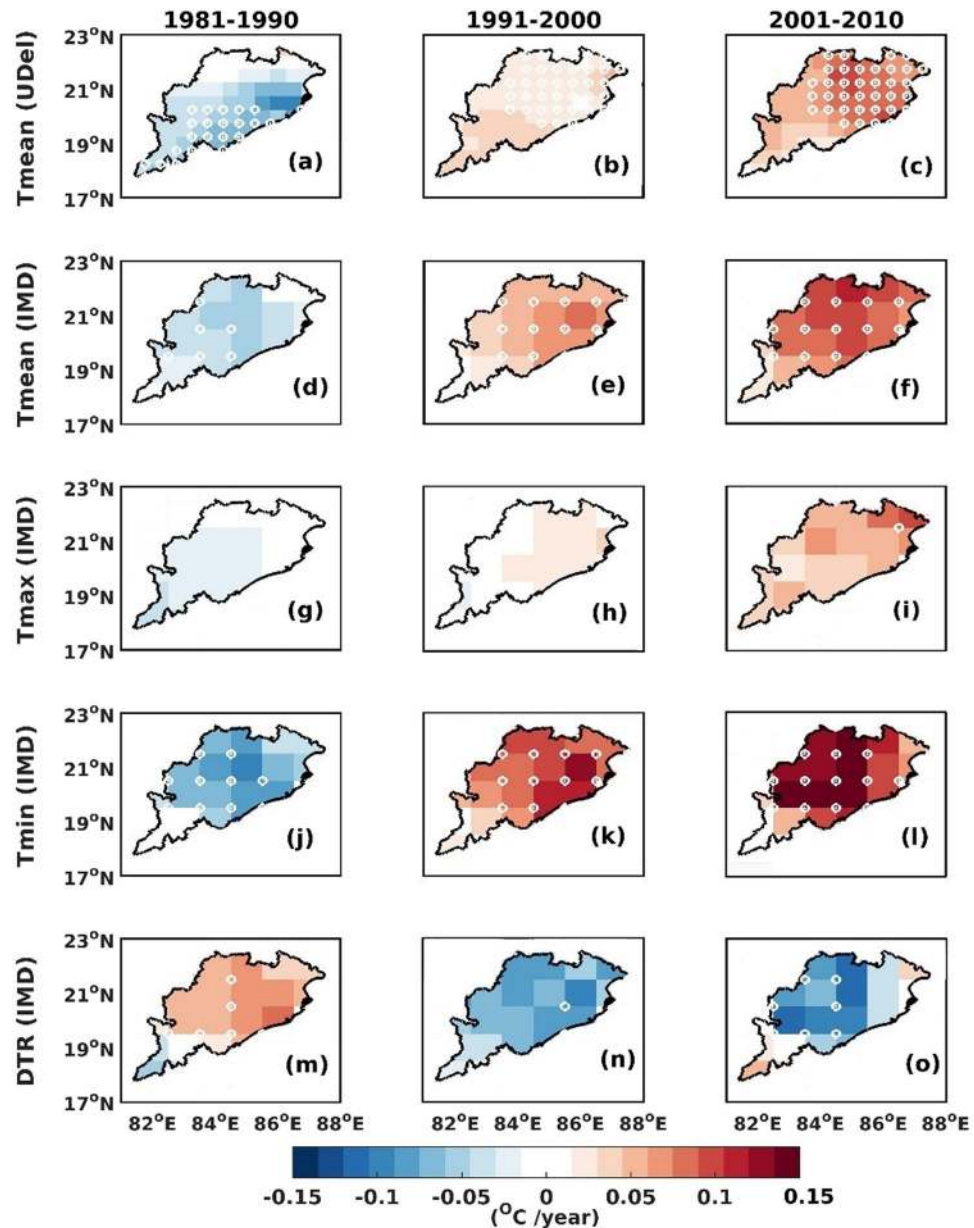


Figure 3. Decade-wise temperature trend of: (a–c)- Mean (University of Delaware) (d–f)- Mean (IMD) (g–i)- Maximum (IMD) (j–l)- Minimum (IMD) (m–o)- DTR (IMD). White circles in the plot represent statistical significance at 95% confidence level. The map was generated using MATLAB 2015b, www.mathworks.com.

surface and satellite measurements. The advent of satellite measurements and its assimilation in reanalysis or changes to the instrumentation, or both these factors combined could alter reanalysis results thereby impacting the OMR calculations and hence the negative values⁴². We therefore do not explore this decade further which is cooling since 1981 in our analysis. However, the past two decades since 1991 show a clear increasing trend of OMR over Odisha especially over West which shifts to the East during the most recent decade (since 2001). An interesting aspect is that the highest increasing trend of OMR ($\sim 0.04^{\circ}\text{C}/\text{year}$) coincides with the location of cities such as Bhubaneswar and Cuttack (which are the densely populated cities) and are also to the East of the state (Figs 1a and 4c). The city of Bhubaneswar is among the fastest growing tier 2 cities in India and suggests that the OMR trend indicates the impact of LULC/urbanization. The OMR has been shown to be a robust method to detect urbanization/LULC impacts on surface temperatures^{10,43–45}. To further strengthen this finding, we explore whether the highest OMR trends are coincident with the largest LULC changes. It may be noted here that further analysis are mostly carried out for the last decade due to availability of validated LULC dataset over the Indian region. In addition, even other supplementary datasets are expected to be better from various sources due to the availability/assimilation of data of highest quality since year 2000 from earth observing system (EOS) satellites.

The LULC change analysis. Our analysis reveals that the largest LULC changes occur over the NE part of the state (Fig. 5c) which shows the number of pixels that have undergone a change from the earlier classification

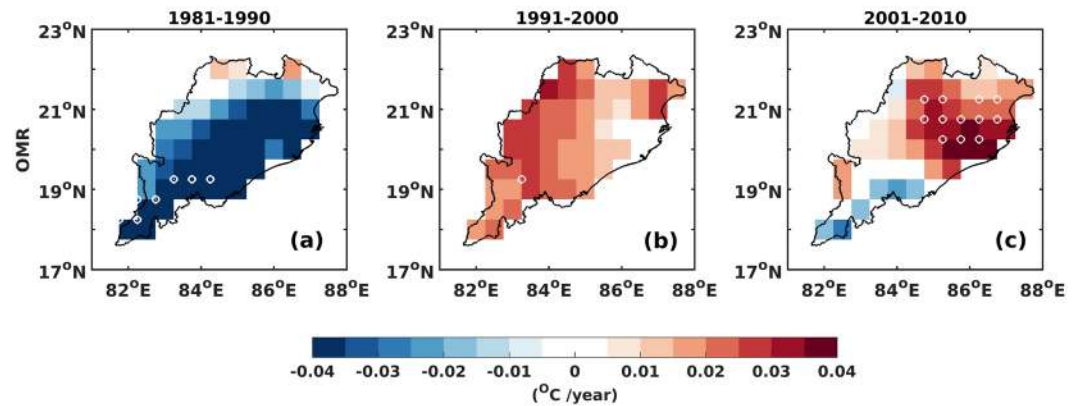


Figure 4. OMR trends over Odisha during the period (a) 1981–1990 (b) 1991–2000 (c) 2001–2010. White circles in the plot represent statistical significance at 95% confidence level. The map was generated using MATLAB 2015b, www.mathworks.com.

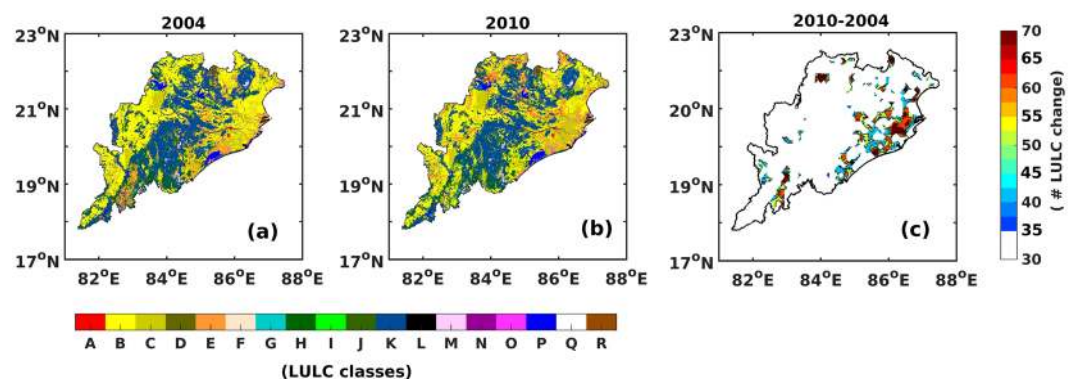


Figure 5. Land Use and Land Cover during (a) 2004 (b) 2010 (c) # LULC change (2010–2004) using AWiFS. The map was generated using MATLAB 2015b, www.mathworks.com. Classes: A-Urban/Built Up, B-Kharif Crop, C-Rabi Crop, D-Zaid Crop, E-Double Crop, F-Current Fallow, G-Plantation, H-Evergreen, I-Deciduous, J-Shrubland, K-Swamp, L-Grassland, M-Other Wasteland, N-Gullies, O-Scrubland, P-Water Bodies, Q-Snow, R-Shifting Cultivation. (Source: AWiFS LULC product of 1 km spatial resolution).

(Fig. 5c) at a spatial resolution of 10 km. This was necessary due to heterogeneous land use and land cover change in the region and also to highlight the spatial extent of these changes better. We have therefore not specifically targeted any land use/cover type, but only investigated the land cover change during the study period. Therefore, the change analysis refers to those areas (number of pixels) where land has undergone change over the period 2004 to 2010. Overall, we find that the LULC change map matches well with the OMR trends shown in Fig. 4c during the recent decade since 2001. This provides us an independent confirmation that the OMR and its spatial pattern is due to temperature changes associated with LULC change. Now, the question is what caused these LULC changes? We therefore quantified individual LULC classes and their changes. It is found that there is a decrease in green vegetation over the state of Odisha (Supplementary Information, Fig. S1). We also carried out a detailed analysis to understand changes of different land use categories using the Advanced Wide Field Sensor (AWiFS) datasets between the periods 2004 to 2010 which coincides with the latest decade discussed in previous sections. Our analysis reveals (Supplementary Information, Fig. S1, Table S2) that Rabi Crop (October to March) cultivation has increased (~97%) over the state of Odisha during 2004 to 2010. This has occurred at the cost of decrease in the Kharif Crops (July to October) showing agricultural diversification and changing cropping patterns^{41,46–48}. The largest changes are associated with vegetation (Kharif, Rabi crops, Fallow lands, Grasslands, Plantations etc.). Table S2 details the individual changes (in terms of area & percentages) to each LULC class. Several studies have also revealed the role of agriculture in changing the vegetation pattern thereby altering the characteristics of local meteorological parameters^{19,49,50}. Our analysis using the NDVI for the period (2001 to 2010) further reveals consistent patterns, with large decrease in vegetation (Fig. 6) especially over the eastern part of the state.

This further confirms that the change in surface temperature are mostly a consequence of LULC change which is also evidenced by our change analysis using satellite based land cover classification. It may be mentioned that the change in NDVI pattern also coincides with the OMR pattern and LULC change pattern. These multiple line of evidences support the notion that the LULC change is associated with the changes to green cover and is related to vegetation or cropping patterns.

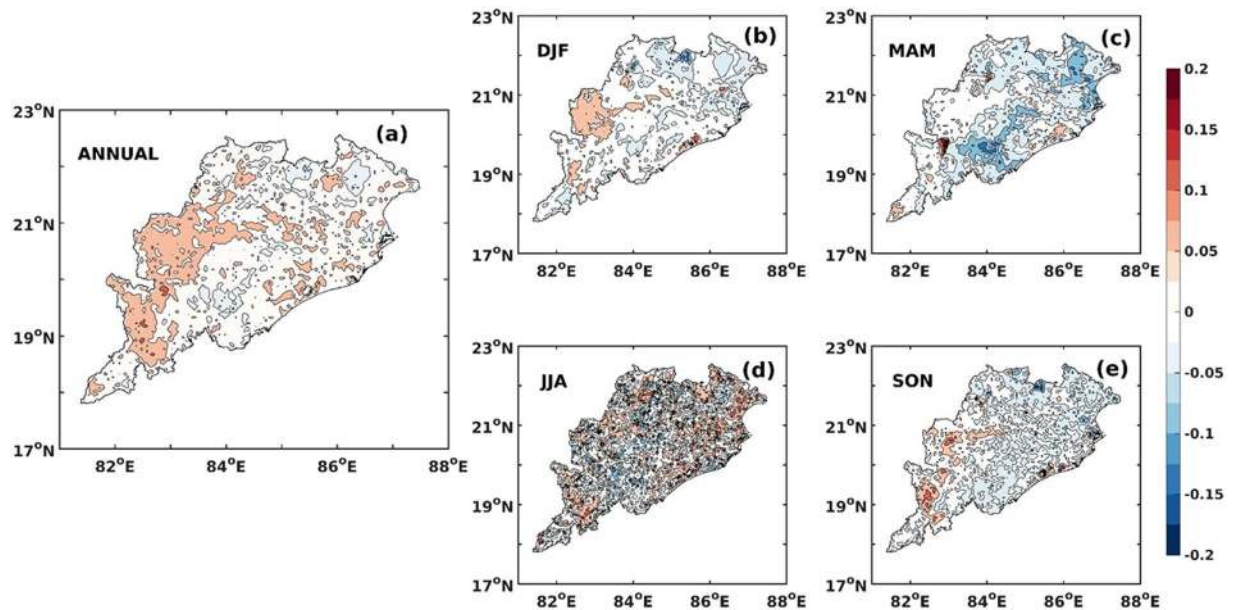


Figure 6. Trend of Normal Difference Vegetation Index (NDVI) during 2001 to 2010 (a) Annual (b) Winter (Dec to February, DJF) (c) Pre-monsoon (March to May, MAM) (d) Monsoon (June to August, JJA) and (e) Post-monsoon (September to November, SON). Source: MODIS –Terra (5.6×5.6 km). The map was generated using MATLAB 2015b, www.mathworks.com.

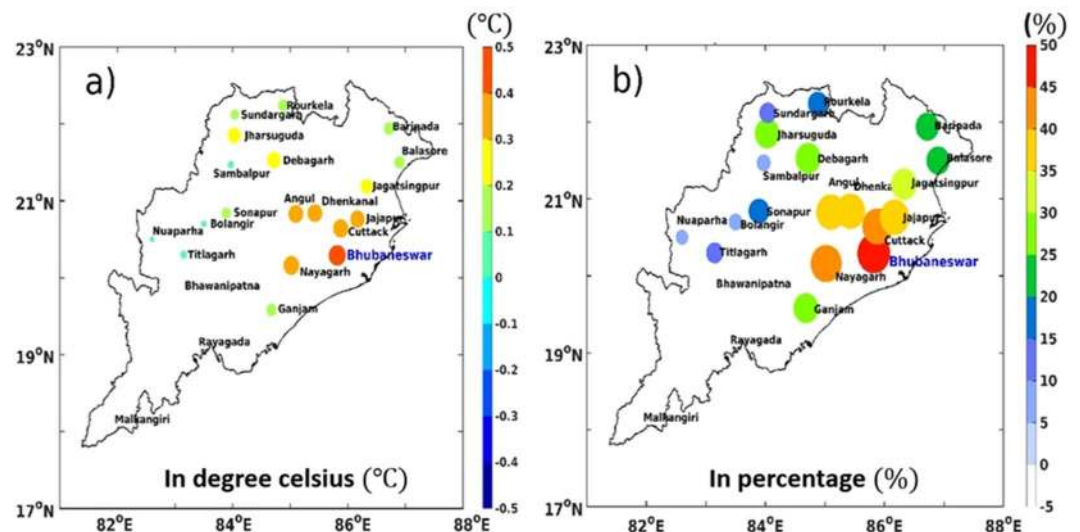


Figure 7. (a) Temperature rise during 2001–2010 due to LULC changes over Odisha ($^{\circ}\text{C}$). (b) Percentage of temperature rise during 2001–2010 due to LULC changes over Odisha. (OMR in terms of percentage with respect to station observations). The map was generated using MATLAB 2015b, www.mathworks.com.

Quantification of LULC linked temperature changes and urbanization. In the previous sections we found that the surface temperature increased due to land surface changes during the period 2001–2010 and is maximum over the eastern part of Odisha. The pattern of OMR, LULC and NDVI trends are all spatially coincident suggesting that the land use changes associated with green vegetation cover have led to the observed warming. However, urban growth may also alter temperature locally and to quantify relationship between LULC induced changes to temperature trends from the overall warming and to explore the signatures of urbanization, we calculated the percentages of the OMR's LULC induced warming trends in relation to the total observed warming for all district headquarters over Odisha. The results indicate that the percentage of temperature rise due to OMR with respect to observations is highest over the urban centres. For example, Cuttack and Bhubaneswar being the most populous cities of Odisha experience temperature increase of $\sim 40\%$ and $\sim 50\%$ respectively during the period 2001–2010 (Fig. 7b) followed by Angul, Dhenkanal, Jajapur. The smaller rate of increase in the NNR

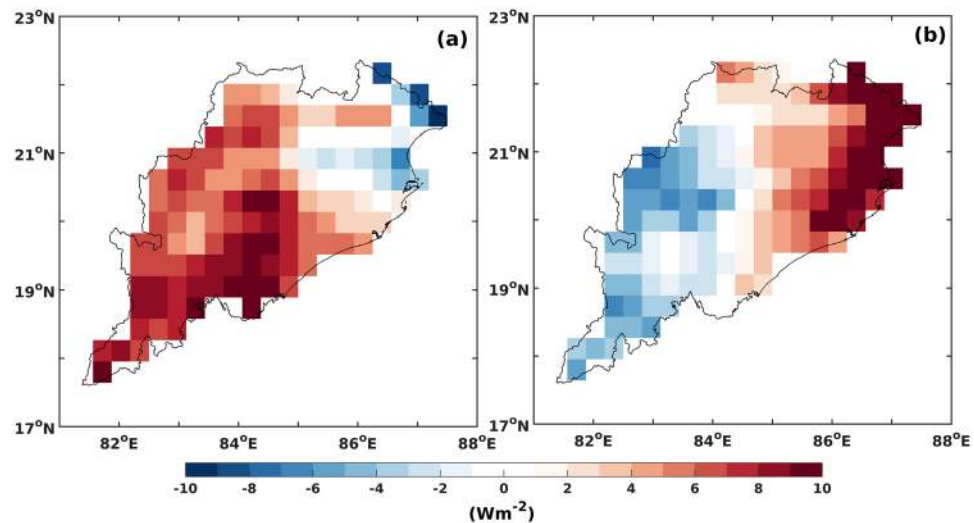


Figure 8. Change in (a) Latent Heat Flux and (b) Sensible Heat Flux during the period 2001–2010 (in Wm^{-2}). Source: NCEP CFSv2 forecast product ($30\text{ km} \times 30\text{ km}$). The map was generated using MATLAB 2015b, www.mathworks.com.

dataset as compared to observation dataset in the past two decades has clearly signified that the surface temperature has increased mostly because of the LULC change. The largest rise for larger cities rather than smaller towns (Fig. 7a,b) highlights the additional impact of urbanization in the OMR analysis.

Physical mechanism. The important parameters modulating LST are surface level soil moisture content and vegetation cover. Changes to these can alter the soil thermal properties and evapotranspiration. It is known that rise in the soil moisture leads to rise in the soil thermal capacity, conductivity and inertia thereby slowing the rise in the LST. In addition, surface heat fluxes such as the Latent Heat Flux (LHF) and Sensible Heat Flux (SHF) get modified with changes to land use. LHF (SHF) increases (decreases) with increasing vegetation leading to a decrease in LST^{3–5,7,8,17,23,25,51–56}.

We therefore also explored changes to LHF and SHF. Our analysis reveals that the changes to both LHF (decreasing) and SHF (increasing) favors warming over Eastern part of Odisha (Fig. 8). Thus it can be confidently stated that the OMR patterns for the period 2001 to 2010, are consistent with those of the LULC, NDVI, SHF and LHF. Therefore, the spatial pattern of temperature changes during the most recent decade are primarily driven by LULC changes over the Eastern part of the state. However, the largest observed LULC linked changes are over the cities where urbanization further enhances the LULC signatures thereby showing the largest percentage wise increase in temperatures (Fig. 7).

Summary and Conclusion

The LULC/urbanization induced surface temperature rise has become a common phenomenon all across the globe though the rate of change depends upon several external factors such as latitude, forest cover, soil type, mitigation practices etc. It may be noted that LULC change has been attributed to increased surface temperatures in Eastern China, USA, Europe, and India^{24,27,28,31,36,39,43–45,57,58}. Despite varied locations, it is observed that the rate of increase in most of these places is $\sim 0.1\text{ }^{\circ}\text{C}/\text{decade}$ which is comparable to that of our study. Though the LULC induced warming has emerged over this region only in the past couple of decades, we find that in terms of LULC induced temperature rise, Eastern India is no less than any other developed regions in the world. This shows that more detailed investigations are urgently required to understand land use related changes to local and regional climate as several regions are undergoing rapid transformation as a result of developmental activities exacerbating the effects of modern climate change. Thus, for the first time over Eastern India this study has integrated surface, satellite and reanalysis datasets to reveal that,

1. The state of Odisha has warmed by about $\sim 0.3\text{ }^{\circ}\text{C}$ during the period 1981 to 2010 with accelerated warming of $\sim 0.9\text{ }^{\circ}\text{C}$ during the recent decade 2001 to 2010.
2. The minimum temperature is increasing at a rate higher than that of mean and maximum temperature since 2001 irrespective of location or altitude. It is also observed that there is a corresponding decrease in DTR during the recent decade.
3. A quarter of this warming is associated with LULC. However, over urban centers such as Bhubaneswar and Cuttack, this fraction is as high as half of the total warming.
4. There has been a general decreasing trend in NDVI over the Eastern part of the state during the period 2001 to 2010 associated with increasing SHF and decreasing LHF.
5. Overall the LULC induced warming is a result of changing vegetation cover. The changing cropping patterns (decreased Kharif and increased Rabi crops) appears to be the leading cause for these LULC changes which exacerbates the warming trend.

Data and Methods

Study domain. The state of Odisha with a population of ~42 million⁵⁹ lies in the Eastern part of India, extending approximately from 81°E to 88°E and 17°N to 23°N (Fig. 1a) and is surrounded by the Bay of Bengal to the East and the Indian peninsula to the west. The region has a tropical climate resulting in high surface temperature during the months of April and May even leading to heat waves. On a climatological basis, most of the state has a mean temperature >26 °C annually with lower temperatures observed over high altitude locations (Fig. 1a). Odisha experiences an annual average rainfall of ~1500 mm primarily from the south-west monsoon during June to September⁶⁰. In addition, it is also influenced by the monsoon depressions and tropical cyclones that makes landfall from the Bay of Bengal both during pre-monsoon and post-monsoon seasons.

Datasets. A combination of station, satellite and reanalysis datasets over the past 30 years (1981 to 2010) are used to identify changes in surface temperature and its relationship to land use and land cover (LULC). The identification of LULC forced changes is based on the widely used observation minus reanalysis (OMR) technique. To characterize the change in temperature, we have used measurements of daily mean, maximum and minimum temperature at 29 stations (Fig. 1a and Table S3). In addition, we have also used daily gridded datasets from IMD^{61,62} and University of Delaware⁶³ to explore the spatial patterns of temperature changes. The University of Delaware gridded mean temperature datasets were developed using surface measurements such as those from Global Historical Climate Network^{64,65} (GHCN). We have used NCEP-NCAR Reanalysis-1 (NNR) surface temperature datasets⁶⁶ primarily for the calculation of OMR.

The land use classification and their change is inferred from the Indian Remote Sensing Satellite (IRS) satellite Resourcesat-1 (P6), Advanced Wide Field Sensor (AWiFS) derived gridded datasets (from ISRO's Bhuvan data portal, <https://bhuvan.nrsc.gov.in/>) for the period 2004 and 2010. This is a gridded product developed and validated for use with mesoscale models⁶⁷ for regional climate applications specifically over India. In addition, the topography dataset was obtained from National Geophysical Data Center (NGDC), NOAA to identify stations suitable for OMR analysis. This dataset was generated from the best available datasets which were further evaluated and edited before Digital Elevation Model (DEM) generation⁶⁸.

The sensible and latent heat flux datasets from NCEP Climate Forecast System Version 2 (CFS v2) were used to detect changes in surface energy exchange. The NCEP CFS v2 is a consistent and stably calibrated forecast product. It provides a continuity of the climate data record with predictability of seasonal and sub-seasonal scale features⁶⁹. The NDVI dataset were obtained from MODIS-Terra (MOD13C2) to determine changes in green vegetation cover. The MOD13C2 is derived using atmospherically corrected cloud free surface reflectance observations. Additional details about these datasets, their spatial and temporal resolution and period of observation are provided in Table S4 (Supplementary Information).

Calculation of OMR and trends. To quantify the increase in temperature due to changes in LULC we have used Observation minus Reanalysis (OMR) technique developed by Kalnay and Cai (2003)⁴⁵. This technique has been widely used to discern signatures related to land use changes and urbanization on surface temperature^{10,17,27,43–45} from observations. OMR relates the change in the temperature trend due to LULC by subtracting NCEP/NCAR Reanalysis-1 (NNR) from the observation. The NNR product⁶⁶ was developed without assimilating surface parameters viz. surface temperature, moisture and winds^{13,43–45} effectively making it insensitive to local surface changes. Therefore, any trend in OMR may be attributed to the impact of urbanization or change in LULC^{27,35,37,45,53,70,71}. The premise here is that observational trends are modulated by all processes including large scale (modern climate change) and local forcing such as LULC change, but the NNR product includes large scale forcing but not LULC change. Therefore, the difference in their trends will highlight the impact of LULC change.

The decadal trends in all parameters were calculated using a simple linear fitting tested against parametric student t-test for statistical significance. The observed changes/trends in station datasets are compared with both gridded and satellite retrieved products depending on availability and accessibility of the datasets during the study period for consistency.

References

- Kayet, N., Pathak, K., Chakrabarty, A. & Sahoo, S. Spatial impact of land use/land cover change on surface temperature distribution in Saranda Forest, Jharkhand. *Model. Earth Syst. Environ.* **127**, 1–10 (2016).
- Fu, P. & Weng, Q. A time series analysis of urbanization induced land use and land cover change and its impact on land surface temperature with Landsat imagery. *Remote Sens. Environ.* **175**, 205–214 (2016).
- Jiang, Y., Fu, P. & Weng, Q. Assessing the impacts of urbanization-associated land use/cover change on land surface temperature and surface moisture: A case study in the midwestern united states. *Remote Sens.* **7**, 4880–4898 (2015).
- Weng, Q., Lu, D. & Schubring, J. Estimation of land surface temperature-vegetation abundance relationship for urban heat island studies. *Remote Sens. Environ.* **89**, 467–483 (2004).
- Jain, M., Dimri, A. & Niyogi, D. Land-Air Interactions over Urban-Rural Transects Using Satellite Observations: Analysis over Delhi, India from 1991–2016. *Remote Sens.* **9**, 1–14 (2017).
- Swain, D. *et al.* Impact of Rapid Urbanization on the City of Bhubaneswar, India. *Proc. Natl. Acad. Sci. India Sect. A - Phys. Sci.* **87**, 845–853 (2017).
- Mitchell, B. C. Urbanization and Land Surface Temperature in Pinellas County, Florida. (2011).
- Su, W., Gu, C. & Yang, G. Assessing the Impact of Land Use/Land Cover on Urban Heat Island Pattern in Nanjing City, China. *J. Urban Plan. Dev.* **136**, 365–372 (2010).
- Niyogi, D. *et al.* In *Land-Atmospheric Research Applications in South and Southeast Asia* (eds Vadrevu, K. P., Ohara, T. & Justice, C.) 553–575, https://doi.org/10.1007/978-3-319-67474-2_25 (Springer International Publishing, 2018).
- Souleymane Fall *et al.* Impacts of land use land cover on temperature trends over the continental United States: assessment using the North American Regional Reanalysis. *Int. J. Climatol.* **30**, 1980–1993 (2009).
- Grover, A. & Singh, R. B. Analysis of Urban Heat Island (UHI) in Relation to Normalized Difference Vegetation Index (NDVI): A Comparative Study of Delhi and Mumbai. *Environments* **2**, 125–138 (2015).

12. Lin, C. Y. *et al.* Urban heat island effect and its impact on boundary layer development and land-sea circulation over northern Taiwan. *Atmos. Environ.* **42**, 5635–5649 (2008).
13. Mahmood, R. *et al.* Impacts of land use/land cover change on climate and future research priorities. *Bull. Am. Meteorol. Soc.* **91**, 37–46 (2010).
14. Anantharaj, V. G., Fitzpatrick, P. J., Li, Y., King, R. L. & Mostovoy, G. V. Impact of land use and land cover changes in the surface fluxes of an atmospheric model. In *International Geoscience and Remote Sensing Symposium (IGARSS)* 2369–2372, <https://doi.org/10.1109/IGARSS.2006.613> (2006).
15. Tao, Z. *et al.* Effect of land cover on atmospheric processes and air quality over the continental United States—a NASA Unified WRF (NU-WRF) model study. *Atmos. Chem. Phys.* **13**, 6207–6226 (2013).
16. Lee, S.-J. & Berbery, E. H. Land Cover Change Effects on the Climate of the La Plata Basin. *J. Hydrometeorol.* **13**, 84–102 (2012).
17. Pielke, R. A. *et al.* Land use/land cover changes and climate: Modeling analysis and observational evidence. *Wiley Interdiscip. Rev. Clim. Chang.* **2**, 828–850 (2011).
18. Paul, S. *et al.* Weakening of Indian Summer Monsoon Rainfall due to Changes in Land Use Land Cover. *Sci. Rep.* **6**, 1–10 (2016).
19. Niyogi, D., Kishitawal, C., Tripathi, S. & Govindaraju, R. S. Observational evidence that agricultural intensification and land use change may be reducing the Indian summer monsoon rainfall. *Water Resour. Res.* **46**, 1–17 (2010).
20. Halder, S., Saha, S. K., Dirmeyer, P. A., Chase, T. N. & Goswami, B. N. Investigating the impact of land-use land-cover change on Indian summer monsoon daily rainfall and temperature during 1951–2005 using a regional climate model. *Hydrol. Earth Syst. Sci.* **20**, 1765–1784 (2016).
21. Xie, Y., Shi, J., Lei, Y., Xing, J. & Yang, A. Impacts of Land Cover Change on Simulating Precipitation in Beijing Area of China. In *2014 IEEE Geoscience and Remote Sensing Symposium* 4145–4148 (2014).
22. Gupta, A. K. & Nair, S. S. Flood risk and context of land-uses: Chennai city case. *J. Geogr. Reg. Plan.* **3**, 365–372 (2010).
23. Shastri, H., Barik, B., Ghosh, S., Venkataraman, C. & Sadavarte, P. Flip flop of Day-night and Summer-Winter Surface Urban Heat Island Intensity in India. *Sci. Rep.* **7**, 1–8 (2017).
24. Mohan, M. & Kandya, A. Impact of urbanization and land-use/land-cover change on diurnal temperature range: A case study of tropical urban airshed of India using remote sensing data. *Sci. Total Environ.* **506–507**, 453–465 (2015).
25. Kumar, R. *et al.* Dominant control of agriculture and irrigation on urban heat island in India. *Sci. Rep.* **7**, 1–10 (2017).
26. Pandey, S. K., Vinoj, V., Landu, K. & Babu, S. S. Declining pre-monsoon dust loading over South Asia: Signature of a changing regional climate. *Sci. Rep.* **7**, 1–10 (2017).
27. Nayak, S. & Mandal, M. Impact of land-use and land-cover changes on temperature trends over Western India. *Curr. Sci.* **102**, 1166–1173 (2012).
28. Dhorde, A., Dhorde, A. & Gadgil, A. S. Long-term Temperature Trends at Four Largest Cities of India during the Twentieth Century. *J. Ind. Geophys. Union* **13**, 85–97 (2009).
29. Jain, S. K. & Kumar, V. Trend analysis of rainfall and temperature data for India. *Current Science* **102**, 37–49 (2012).
30. Jalan, S. & Sharma, K. Spatio-temporal assessment of land use/land cover dynamics and urban heat island of Jaipur city using satellite data. In *International Archives of the Photogrammetry, Remote Sensing and Spatial Information Sciences - ISPRS Archives XL-8*, 767–772 (2014).
31. Mohan, M. *et al.* Urban Heat Island Assessment for a Tropical Urban Airshed in India. *Atmos. Clim. Sci.* **02**, 127–138 (2012).
32. Singh, P., Kikon, N. & Verma, P. Impact of land use change and urbanization on urban heat island in Lucknow city, Central India. A remote sensing based estimate. *Sustain. Cities Soc.* **32**, 100–114 (2017).
33. Jagadeesh, C. B., Naiklal, H. S. S. & Sitaram, N. S. Dynamics of Rapid Urbanization of Bangalore and Its Impact on Land- Use/Land-Cover – A case study of Vrishabhavathi sub-watershed. *Int. Res. J. Eng. Technol.* **02**, 2338–2345 (2015).
34. Fan, C. *et al.* Understanding the impact of urbanization on surface urban heat Islands—A longitudinal analysis of the oasis effect in subtropical desert cities. *Remote Sens.* **9**, 1–15 (2017).
35. Cui, Y., Xu, X., Dong, J. & Qin, Y. Influence of urbanization factors on surface urban heat island intensity: A comparison of countries at different developmental phases. *Sustainability* **8** (2016).
36. Wang, Y. *et al.* The impact of urbanization on the annual average temperature of the past 60 years in Beijing. *Adv. Meteorol.* **2014**, 1–10 (2014).
37. Ren, G. Y. *et al.* Urbanization effects on observed surface air temperature trends in north China. *J. Clim.* **21**, 1333–1348 (2008).
38. Battaglia, M. A., Douglas, S. & Hennigan, C. J. Effect of the Urban Heat Island on Aerosol pH. *Environ. Sci. Technol.* **51**, 13095–13103 (2017).
39. Mohan, M., Kandya, A. & Battiprolu, A. Urban Heat Island Effect over National Capital Region of India: A Study using the Temperature Trends. *J. Environ. Prot. (Irvine, Calif.)* **02**, 465–472 (2011).
40. Alexander, L. V. *et al.* Global observed changes in daily climate extremes of temperature and precipitation. *J. Geophys. Res. Atmos.* **111**, 1–22 (2006).
41. Sudhakar Reddy, C. *et al.* Quantification and monitoring of deforestation in India over eight decades (1930–2013). *Biodivers. Conserv.* **25**, 93–116 (2016).
42. Dewan, A. M. & Corner, R. J. In *Dhaka Megacity: Geospatial Perspectives on Urbanisation, Environment and Health* **113**, 219–238 (2014).
43. Lim, Y. K., Cai, M., Kalnay, E. & Zhou, L. Impact of vegetation types on surface temperature change. *J. Appl. Meteorol. Climatol.* **47**, 411–424 (2008).
44. Yang, X., Hou, Y. & Chen, B. Observed surface warming induced by urbanization in east China. *J. Geophys. Res. Atmos.* **116**, 1–12 (2011).
45. Kalnay, E. & Cai, M. Impact of urbanization and land-use change on climate. *Nature* **423**, 528–531 (2003).
46. Government of Odisha. *Odisha Agriculture Statistics 2009–10. Govt. of Odisha Report* (2011).
47. Pattanayak, M. Nature and trends of cropping pattern in Orissa: A district level analysis. *JELClassification* **N55, Q10** (2002).
48. Reporter, S. Odisha govt asks banks for insurance of rabi crops. *Times Of India* 2–3 (2015).
49. Douglas, E. M., Beltrán-Przekurat, A., Niyogi, D., Pielke, R. A. & Vörösmarty, C. J. The impact of agricultural intensification and irrigation on land-atmosphere interactions and Indian monsoon precipitation - A mesoscale modeling perspective. *Glob. Planet. Change* **67**, 117–128 (2009).
50. Roy, S. S. *et al.* Impacts of the agricultural Green Revolution-induced land use changes on air temperatures in India. *J. Geophys. Res. Atmos.* **112**, 1–13 (2007).
51. Kandel, H. P. Land Use/Land Cover Driven Surface Energy Balance and Convective Rainfall Change in South Florida, <https://doi.org/10.25148/etd.FIDC000102> (2015).
52. Sharma, A. *et al.* Urban meteorological modeling using WRF: a sensitivity study. *Int. J. Climatol.* **37**, 1885–1900 (2017).
53. Zong-Ci, Z., Yong, L. & Jian-Bin, H. Are There Impacts of Urban Heat Island on Future Climate Change? *Adv. Clim. Chang. Res.* **4**, 133–136 (2013).
54. Jin, M., Shepherd, J. M. & Zheng, W. Urban Surface Temperature Reduction via the Urban Aerosol Direct Effect: A Remote Sensing and WRF Model Sensitivity Study. *Adv. Meteorol.* **2010**, 1–14 (2010).
55. He, Y., Lee, E. & Warner, T. A. A time series of annual land use and land cover maps of China from 1982 to 2013 generated using AVHRR GIMMS NDVI3g data. *Remote Sens. Environ.* **199**, 201–217 (2017).

56. Lin, C. Y. *et al.* Impact of an improved WRF urban canopy model on diurnal air temperature simulation over northern Taiwan. *Atmos. Chem. Phys.* **16**, 1809–1822 (2016).
57. Chrysanthou, A., Van Der Schrier, G., Van Den Besselaar, E. J. M., Klein Tank, A. M. G. & Brandsma, T. The effects of urbanization on the rise of the European temperature since 1960. *Geophys. Res. Lett.* **41**, 7716–7722 (2014).
58. Yi-Ling, H., Bao-De, C., Xu-Chao, Y. & Ping, L. Observed Climate Change in East China during 1961–2007. *Adv. Clim. Chang. Res.* **4**, 84–91 (2013).
59. Census India. *Census India Report 2011*. (2011).
60. Gouda, K., Sahoo, S., Samantray, P. & Shivappa, H. Comparative Study of Monsoon Rainfall Variability over India and the Odisha State. *Climate* **5**, 1–16 (2017).
61. Rajeevan, M. & Bhat, J. A high resolution daily gridded rainfall dataset (1971–2005) for mesoscale meteorological studies. *Curr. Sci.* **96**, 558–562 (2009).
62. Srivastava, A. K., Rajeevan, M. & Kshirsagar, S. R. Development of a high resolution daily gridded temperature data set (1969–2005) for the Indian region. *Atmos. Sci. Lett.* **10**, 249–254 (2009).
63. Matsuura, K. & Wilmott, C. The Climate Data Guide: Global (land) precipitation and temperature: Willmott & Matsuura, University of Delaware. *The Climate Data Guide* Available at: [climate.%5Cngeog.udel.edu/~climate/html_pages/Global2011/5CnREADME_GlobalTsP2011.html](http://climate.geog.udel.edu/~climate/html_pages/Global2011/5CnREADME_GlobalTsP2011.html). (2012).
64. Peterson, T. C. & Vose, R. S. An Overview of the Global Historical Climatology Network Temperature Data Base. *Bull. Am. Meteorol. Soc.* **78**, 2837–2849 (1997).
65. Peterson, T. C., Vose, R., Schmoyer, R. & Razuvaev, V. Global Historical Climatology Network (GHCN) quality control of monthly temperature data. *Int. J. Climatol.* **18**, 1169–1179 (1998).
66. Kalnay, E. *et al.* The NCEP/NCAR 40-Year Reanalysis Project. *Bull. Am. Meteorol. Soc.* **77**, 437–472 (1996).
67. NRSC. *IRS-P6 AWiFS derived gridded land use/land cover data compatible to Mesoscale Models (MM5 and WRF) over Indian Region. Technical Document, NRSC*, <https://doi.org/10.1111/j.1523-1739.2010.01636.x> (2014).
68. Amante, C. & Eakins, B. W. *Etopo1 - 1 Arc-Minute Global Relief Model: Procedures, Data Sources and Analysis. NOAA Technical Memorandum NESDIS NGDC-24 ETOPO1* **16** (2009).
69. Saha, S. *et al.* The NCEP Climate Forecast System Version 2. *J. Clim.* **3**, 2185–2208 (2014).
70. Zhou, L. *et al.* Evidence for a significant urbanization effect on climate in China. *Proc. Natl. Acad. Sci.* **101**, 9540–9544 (2004).
71. Yow, D. M. Urban Heat Islands: Observations, Impacts, and Adaptation. *Geogr. Compass* **1**, 1227–1251 (2007).

Acknowledgements

The authors would like to acknowledge the India Meteorological Department (IMD), Giovanni-NASA, Bhuvan-ISRO, NGDC (NOAA) and NCEP-NCAR for providing all the datasets free of cost. The authors acknowledge UDel_AirT_Precip data provided by the NOAA/OAR/ESRL PSD, Boulder, Colorado, USA, from their web site at <https://www.esrl.noaa.gov/psd/>. The authors also thank IIT Bhubaneswar for providing all the necessary infrastructure for carrying out this study. Lastly, the authors would like to acknowledge DST-UKIERI (UKIERI-DST-2014-15-046) and ISRO-ARFI projects for providing financial support to carry out some of the analysis used in the study. P.P.G. would like to thank MHRD, Government of India for providing fellowship for his graduate research. The authors also gratefully acknowledge the constructive reviews by Prof. Dev Niyogi and the anonymous reviewers whose comments and suggestions have greatly improved the manuscript.

Author Contributions

V.V. conceived the idea. P.P.G. carried out all the analysis. P.P.G. and V.V. wrote the paper with subsequent input from all co-authors. All authors contributed through discussion and interpretation of the results.

Additional Information

Supplementary information accompanies this paper at <https://doi.org/10.1038/s41598-019-45213-z>.

Competing Interests: The authors declare no competing interests.

Publisher's note: Springer Nature remains neutral with regard to jurisdictional claims in published maps and institutional affiliations.



Open Access This article is licensed under a Creative Commons Attribution 4.0 International License, which permits use, sharing, adaptation, distribution and reproduction in any medium or format, as long as you give appropriate credit to the original author(s) and the source, provide a link to the Creative Commons license, and indicate if changes were made. The images or other third party material in this article are included in the article's Creative Commons license, unless indicated otherwise in a credit line to the material. If material is not included in the article's Creative Commons license and your intended use is not permitted by statutory regulation or exceeds the permitted use, you will need to obtain permission directly from the copyright holder. To view a copy of this license, visit <http://creativecommons.org/licenses/by/4.0/>.

© The Author(s) 2019