



Published in final edited form as:

Ann N Y Acad Sci. 2004 June ; 1016: 749–777.

Learned Birdsong and the Neurobiology of Human Language

ERICH D. JARVIS

Department of Neurobiology, Duke University Medical Center, Durham, North Carolina 27710, USA

Abstract

Vocal learning, the substrate for human language, is a rare trait found to date in only three distantly related groups of mammals (humans, bats, and cetaceans) and three distantly related groups of birds (parrots, hummingbirds, and songbirds). Brain pathways for vocal learning have been studied in the three bird groups and in humans. Here I present a hypothesis on the relationships and evolution of brain pathways for vocal learning among birds and humans. The three vocal learning bird groups each appear to have seven similar but not identical cerebral vocal nuclei distributed into two vocal pathways, one posterior and one anterior. Humans also appear to have a posterior vocal pathway, which includes projections from the face motor cortex to brainstem vocal lower motor neurons, and an anterior vocal pathway, which includes a strip of premotor cortex, the anterior basal ganglia, and the anterior thalamus. These vocal pathways are not found in vocal non-learning birds or mammals, but are similar to brain pathways used for other types of learning. Thus, I argue that if vocal learning evolved independently among birds and humans, then it did so under strong genetic constraints of a pre-existing basic neural network of the vertebrate brain.

Keywords

speech; song; warble; Broca's area; Wernicke's area; dorsal lateral prefrontal cortex; auditory pathway; epigenetic constraints

VOCAL LEARNERS

Vocal learning is the ability to acquire vocalizations through imitation rather than instinct. It is distinct from auditory learning, which is the ability to make associations with sounds heard. An example of auditory learning is demonstrated when a dog learns to associate the words "sit" (English), "sientese" (Spanish), or "osuwali" (Japanese) with the act of sitting. The dog understands the word, but cannot imitate the sound of the word. However, auditory learning is not solely defined in the context of one species learning to grasp the meaning of sounds of another species. For example, a young vervet monkey will make innate alarm calls to all large animals. Auditory learning is exhibited when the young animals apparently learn from adult conspecifics to refine the production of their alarm calls only to predators.¹ Vocal learners, such as humans, parrots, and some songbirds, are able to imitate non-innate sounds such as sit, sientese, or osuwali. Most vocal learners, however, imitate sounds of their own species that have been passed on through cultural transmission.² Vocal learning depends upon auditory learning, but auditory learning does not depend on vocal learning. Vocal learners must hear the sounds they will later imitate. They must also use auditory feedback to correct their vocal output,³ apparently forming auditory memories of whether or not they matched the sounds that they are trying to imitate.

Given the above definitions, most, if not all, vertebrates are capable of auditory learning, but few are capable of vocal learning. The latter has been experimentally found to date only in three distantly related groups of mammals (humans, bats, and cetaceans) and three distantly related groups of birds (parrots, hummingbirds, and songbirds) (Fig. 1).^{4,5} Not all species in these groups have vocal learning abilities to the same degree. For example, humans, the most prolific vocal learners, can learn to produce a seemingly infinite number of combinations of learned vocalizations. While not as prolific, some parrots, corvid songbirds, starlings, and mockingbirds can produce hundreds if not thousands of calls and/or learned warble/song combinations. Finally, less prolific vocal learners, such as some very stereotyped songbirds and hummingbirds produce only one distinct song type with little variation.^{6–8}

Each of the vocal learning avian and mammalian groups has close vocal non-learning relatives (Fig. 1). Thus, it has been argued that vocal learning has evolved independently of a common ancestor in the three vocal learning bird groups⁴ and presumably in the three vocal learning mammalian groups. The question thus arises is whether there is something special about the brains of these animals that can imitate sounds.

CONSENSUS BIRD BRAIN SYSTEM FOR LEARNED VOCALIZING

Cerebral Vocal Nuclei in Vocal Learning Birds

A combination of methods, which include tract tracing, Nissl staining of brain sections, lesioning of specific brain regions, electrophysiological recordings, and vocalizing-driven gene expression, has revealed that songbirds, parrots, and hummingbirds each have seven cerebral or telencephalic vocal brain nuclei that are active when they are producing learned vocalizations (Fig. 2A–C; abbreviations in Table 1).^{5,9–12} These brain nuclei have been given different names in each bird group because of the possibility that each group evolved them independently of a common ancestor with such nuclei.^{5,13} Three of the nuclei are in nearly identical brain locations in each bird group, forming a column across three brain subdivisions (Fig. 2A–C, dark grey): (1) a nucleus in the anterior striatum (parrot MMSt, hummingbird VAS, and songbird Area X); (2) one in the anterior nidopallium (parrot NAOc, hummingbird VAN, and songbird MAN); and (3) one in the anterior mesopallium (parrot MOc, hummingbird VAM, and songbird MOc-like). The other four nuclei are located more posteriorly, in different locations relative to each other for each bird group, but within comparable areas of the same cerebral subdivisions (Fig. 2A–C, white): (4) a prominent nucleus that bulges from the nidopallium into the overlying ventricle (parrot NLC, hummingbird VLN, and songbird HVC); (5) a robust appearing nucleus within the arcopallium (parrot AAC, hummingbird VA, and songbird RA); (6) a small nucleus in the nidopallium (parrot IAN, hummingbird VMN, and songbird Nlf); and (7) a small nucleus near the latter in the mesopallium (parrot IAM, hummingbird VMM, and songbird Av). To date, none of these seven vocal nuclei have been found in the cerebrums of vocal non-learning birds.^{14–16}

The neural connectivity between most of the seven cerebral vocal nuclei has been determined in both songbirds and parrots,^{13,17,18} and some connections have been determined in hummingbirds.¹⁶ In all three bird groups, the posterior nuclei (numbers 4 and 5 above) appear to be part of a posterior vocal pathway that is connected with vocal motor neurons of the brainstem. This pathway includes a projection from a nidopallial vocal nucleus (HVC, NLC, VLN) to the arcopallial vocal nucleus (RA, AAC dorsal part, VA), and from there to midbrain (DM) and medulla (nXIIts) vocal motor neurons (Fig. 2A–C, black arrows). DM and nXIIts are also present in vocal non-learning birds and are known to control production of innate vocalizations. However, vocal non-learning birds apparently do not contain projections from the arcopallium to DM and nXIIts.²⁰ The connectivity of the other two cerebral posterior vocal nuclei (numbers 6 and 7 above) in hummingbirds is not known, and in parrots has not been

well studied.¹² In songbirds, one of these nuclei (Nif) projects to HVC and the other (Av) receives a projection from HVC (see Figure 2 of Reiner *et al.*, this volume,³⁴ pp. 90,91).²¹

In songbirds and parrots, the nuclei located anteriorly are part of what is called an anterior forebrain pathway loop, where the pallial vocal nucleus (MAN, NAO) projects to the striatal vocal nucleus (Area X, MMSt), the striatal vocal nucleus in turn projects to a nucleus in DLM of the dorsal thalamus (DLM, DMM), and the dorsal thalamus nucleus in turn projects back to the pallial vocal nucleus (MAN, NAO) (Fig. 2A,C, white arrows).^{17,18} In the songbird DLM, the anterior part has been proposed to be the vocal part of this nucleus.²² The parrot pallial MO vocal nucleus also projects to the striatal vocal nucleus (MMSt).¹⁷ Connectivity of the songbird MO analogue has not yet been determined.

The major differences among avian vocal learning groups, I argue, are in the connections between the posterior and anterior vocal pathways.¹² Each group appears to have differences in the inputs and outputs between the two pathways. In songbirds, the anterior vocal pathway receives input into Area X of the striatum from HVC of the nidopallium; the posterior pathway's HVC receives input from the medial portion of the anterior pathway via mMAN, and the posterior's RA receives input from the lateral portion of the anterior pathway via lMAN (Fig. 2A, 3A).²³ In contrast, in parrots, the anterior pathway receives input into its two pallial nuclei (NAO and MO) from the ventral part of arcopallial nucleus, called AACv; the posterior pathway's NLC and AACv and AACd (the dorsal part) appear to receive input from the same region of the anterior pathway's NAO and from DMM of the dorsal thalamus (Fig. 2B, 3B).¹⁷ One important distinction is that the parrot posterior pathway vocal nuclei do not appear to send projections to the striatal nucleus of the anterior pathway.

Cerebral Auditory Nuclei in All Birds

Vocal learning (Fig. 2A–C) and vocal non-learning birds, I argue, share similar auditory pathways. These similarities include projections from ear hair cells to co-chlear ganglia neurons, to auditory pontine nuclei (CN, LL), to midbrain (MLd) and thalamic (Ov) nuclei, and to primary (L2) and secondary (L2, L3, NCM, and CM) pallial areas (see Figure 2 of Reiner *et al.*, this volume,³⁴ pp. 90,91). Also found in both vocal learning and non-learning birds are auditory regions in the arcopallium (vocal learners: songbird RA cup, parrot ACM, hummingbird Ai; vocal non-learner: pigeon AIVM) and in the striatum (CSt) (Fig. 2A–C).^{5, 12, 26, 29} The auditory arcopallial nuclei receive input from the auditory nidopallium areas. Due to lack of detailed study on the connectivity of CSt (formally known as PC or caudal PA) in different species, it is not yet possible to make reliable comparisons for the striatal auditory region.

The source of auditory input into the vocal pathways of vocal learning birds is also unclear. Various routes have been proposed. These include the HVC shelf into HVC, the RA cup into RA, Ov or CM into Nif, and from Nif dendrites in L2, in songbirds.^{27, 29–31} In parrots, these include the NLC shell into NLC, and nucleus basorostralis, L1 and L3 into the comparable Nif-like nucleus IAN.^{13, 17, 32} More study is necessary to determine whether any of these regions/nuclei truly brings auditory input into the vocal pathways. The location of the vocal nuclei relative to the auditory regions suggests that there will be some differences among vocal learning groups. In songbirds, the posterior vocal nuclei are embedded in the auditory regions; in hummingbirds, they are situated more lateral, but still adjacent to the auditory regions; in parrots, they are situated far laterally and physically separate from the auditory regions (Fig. 2A–C). At a minimum, the axons connecting the vocal and auditory systems would have to take different routes in the different vocal learners.

Much like generating a consensus DNA sequence from comparing comparable genes of different species, this comparative analysis suggests that a consensus bird brain system for

learned vocalizing consists of seven cerebral vocal nuclei, with at least one nucleus located in each major brain subdivision except for the hyperpallium and pallidum, with the seven nuclei distributed into two pathways: (1) a posterior pathway that projects onto lower motor neurons and (2) an anterior pathway that forms a pallial-basal ganglia-thalamic-pallial loop.

COMPARATIVE BIRD AND MAMMAL CONNECTIVITY

Posterior and Anterior Motor Pathways

A recent forum on avian neuroanatomy led comparative neurobiologists to propose nomenclature changes in describing the avian brain and its homologies with the mammalian brain (see Reiner *et al.*, this volume³⁴)^{33,35} This new understanding of avian brain organization makes possible better-informed comparisons of vocal learning brain pathways in birds with the pathways in mammals. However, a caveat limiting such comparisons is that ethical and practical issues prevent tract-tracing experiments in humans and cetaceans. In bats, the vocal learning brain areas are not known. Thus, the connectivity of vocal learning pathways is not known for any mammal. Studies have been performed on the cerebrums of non-vocal learning mammals, such as cats, rats, and macaque monkeys. Therefore, I make connectivity comparisons between vocal learning pathways in vocal learning birds with non-vocal pathways in vocal non-learning mammals.

I argue that the songbird and parrot posterior vocal pathways are similar in connectivity to mammalian motor corticospinal pathways (Fig. 3). As has been proposed generally for the arcopallium by Karten and Shimizu,³⁶ I more specifically suggest that projecting neurons of songbird RA and parrot AACd are similar to what has been called pyramidal tract (PT) neurons of lower layer 5 of mammalian motor cortex.^{37–40} The latter send long axonal projections out of the cerebrum through pyramidal tracts to synapse onto brainstem and spinal cord α -motor neurons that control muscle contraction and relaxation. As has been proposed generally for the nidopallium by Karten and Shimizu,³⁶ I more specifically suggest that the projection neurons of parrot NLC and the RA-projecting neurons of songbird HVC are similar to layer 2 and 3 neurons of mammalian motor cortex, which send intrapallial projections to layer 5 (Fig. 3).^{41,42} I suggest that songbird Av of the mesopallium is also similar to layers 2 and 3 in that Av has an intrapallial connection from another motor pallial nucleus (HVC; see Figure 2 of Reiner *et al.*, this volume,³⁴ pp. 90,91). Mammalian parallels to songbird NIf are less clear. In mammals, primary sensory input from the thalamus projects to layer 4 of cortex; motor feedback from the thalamus projects to layer 5 (in primary motor cortex) or layer 3 (in frontal cortex).^{43,44} NIf is directly adjacent to L2 and like L2 it is similar to mammalian layer 4 neurons receiving thalamic input from UVa, but like the mammalian thalamic input to layer 3, UVa has motor-associated activity, firing during vocalizing.⁴⁵

In humans, the only connectivity determined in a cerebral vocal brain area that I am aware of has been conducted by Kuypers.⁴⁶ Using silver staining of degenerated axons in patients that had vascular strokes to brain areas that included but were not limited to face motor cortex, he found that this area of cortex projects to nucleus ambiguus (also spelled ambiguous) and the hypoglossal nucleus. He reproduced similar lesions in macaque monkeys and chimpanzees (vocal non-learners) and found that their face motor cortex projects minimally, if at all, to nucleus ambiguus, but it does project massively to the hypoglossal nucleus and to all other brainstem cranial motor nuclei as found in humans.⁴⁷ Nucleus ambiguus in mammals controls muscles of the vocal organ (the larynx)^{48,49} much like nXII does in birds (the syrinx). The hypoglossal nucleus in mammals and the non-tracheosyringeal part of nXII in birds controls muscles of the tongue.¹⁹ In this manner, the pallial nuclei combined of the songbird and parrot posterior vocal pathways are more similar to the human face motor cortex than to any other part of the human pallium.

Others and I have argued that the songbird and parrot anterior vocal pathways are similar in connectivity to mammalian cortical-basal ganglia-thalamic-cortical loops (Fig. 3).^{17,50–52} Going further, I argue that projection neurons of songbird MAN and parrot NAO^{17,53,54} are similar to what has been called intratelencephalic (IT) neurons of layer 3 and upper layer 5 of mammalian premotor cortex, which send two collateral projections, one to medium spiny neurons of the striatum ventral to it and the other to other cortical regions, including motor cortex (Fig. 3).^{40,55} Unlike mammals, the spiny neurons in both songbird Area X, and presumably parrot MMSt, project to pallidal-like cells within the vocal nuclei Area X and MMSt instead of to a separate structure consisting only of pallidal cells.^{17,52,56} This striatal-pallidal cell intermingling may be a general trait of the anterior avian striatum. The projection of the pallidal-like cells of songbird Area X and parrot MMSt are similar to the pallidal projection neurons of the internal globus pallidus (GPi) of mammals, which project to the ventral lateral (VL) and ventral anterior (VA) nuclei of the dorsal thalamus (Fig. 3).⁵⁷ Like songbird DLM and parrot DMM projection's to lMAN and NAO, mammalian VL/VA projects back to layer 3 neurons of the premotor areas, closing parallel loops.^{43,57,58}

Because connections between the posterior and anterior vocal pathways differ between songbirds and parrots, comparisons between them and mammals will also differ. I argue that input into mammalian anterior pathways is from collaterals of PT-layer 5 neurons of motor cortex, one projecting to the brainstem and spinal cord and the other projecting into the striatum (Fig. 3C).^{40,59} This is different from the songbird where a specific cell type of HVC, called X-projecting neuron, projects to the striatum separately from those (neurons of RA) that project to the medulla. Parrot vocal connectivity is even more different from the mammalian, where AAC of the arcopallium has two anatomically separate neuron populations, AACd projecting to the medulla and AACv projecting to anterior pallial vocal nuclei NAO and MO.⁶⁰ I argue that output of mammalian anterior pathways are the collaterals of the above-mentioned IT-layer 3 and IT-upper layer 5 neurons that project to other cortical regions (Fig. 3C).⁴⁰

Auditory Pathways

A comparative analysis of the literature^{27,28,61} reveals that birds, reptiles, and mammals have relatively similar auditory pathways (Fig. 4). All three groups have ear hair cells that synapse onto sensory neurons, which project to cochlea and lemniscal nuclei of the brainstem, which in turn project to midbrain (avian MLd, reptile torus, mammalian inferior colliculus) and thalamic (avian Ov, reptile reunions, mammalian medial geniculate) auditory nuclei. The thalamic nuclei in turn project to primary auditory cell populations in the pallium (avian L2, reptile caudal pallium, mammalian layer 4 of primary auditory cortex). For connectivity in the cerebrum, the only detailed information we have is for mammals and birds. It has been proposed that avian L1 and L3 neurons are similar to mammalian layers 2 and 3 of primary auditory cortex, the latter of which receive input, like L2, from layer 4.^{26,62} I suggest that avian NCM and CM are also similar to layers 2 and 3 in that they form reciprocal intrapallial connections with each other and receive some input from L2. Neurons of the songbird RA cup, parrot ACM, and pigeon AIVM of the arcopallium are similar to mammalian layers 5 and 6, which send auditory feedback projections to the shell regions of thalamic and midbrain auditory nuclei.^{28,29,63–65} I further suggest that avian CSt is similar to an auditory region in the mammalian striatum. Similar to birds (Fig. 2A–C), this mammalian brain region is located caudally in the striatum, is smaller in dimension to the anterior motor striatal regions, and may receive connections from the pallium/cortex.^{5,27,66,67} The connectivity of this region has not been verified in birds or mammals.

Taken together, the above analysis suggests that there are gross similarities between the connectivity of the consensus bird brain system for learned vocalizing and the non-vocal motor pathways (a posterior-like pathway) and cortical-basal-ganglia-thalamic-cortical loops (an

anterior-like pathway) of mammals (Fig. 3A–C). It also suggests that the auditory pathways of birds, reptiles, and mammals may be homologous (Fig. 4). Differences between birds and mammals in connectivity of each of these pathways appear to be in the details, particularly at the level of the pallium. With this knowledge as a base, we can use vocal learning birds to gain some insight into the neurobiology of vocal learning pathways in humans. I first compare brain regions where lesions result in somewhat comparable behavioral deficits.

COMPARATIVE BIRD AND HUMAN LESIONS

Comparable Vocal Deficits

There are some gross similarities in behavioral deficits following lesions in specific brain areas of vocal learning birds (experimentally placed) and humans (due to stroke or trauma). For example, lesions to songbird HVC and RA,^{9,68} particularly those placed on the left side in canaries, cause deficits similar to those found after damage to human face motor cortex, this being muteness for learned vocalizations, i.e., for speech (Fig. 5A,B).^{69–71} Innate sounds, such as crying and screaming, can still be produced, however. When the lesions are unilateral, both birds and patients often recover some vocal behavior, because the opposite hemisphere appears to take over some function; likewise, recovery is better when the canary is a juvenile or the patient a child.^{72–74} Partial lesions to parrot NLC causes partial deficits in producing the correct acoustic structure of learned vocalizations, including for learned speech.⁷⁵ The symptoms are similar to that of dysarthria in humans after recovery from damage to the face motor cortex. Lesions to the face motor cortex in chimpanzees and other non-human primates do not affect their ability to produce vocalizations.^{47,70,76} I am not aware of the effects of such forebrain lesions on vocal behavior being tested in vocal non-learning birds. Lesions to avian nXIIIts and mammalian nucleus ambiguus, and large lesions to the midbrain that include bird DM and mammalian (including human) central grey, result in the inability to vocalize (muteness) in both vocal learners and non-learners.^{9,48,77–80} One difference between the avian posterior vocal pathways and the face motor cortex in humans is that lesions to songbird NIf or parrot IAN of the posterior pathway do not prevent production of learned vocalizations or cause dysarthric-like vocalizations, but lead to production of more varied syntax⁸¹ or impaired vocal imitation.⁸²

Lesions to songbird MAN^{23,83,84} cause deficits that are most similar to those found after damage to anterior part of the human premotor cortex, this being prevention of vocal learning and/or inducing sequencing problems (Fig. 5B). In birds and humans, such lesions do not prevent the ability to produce learned song or speech. In humans, these deficits are called verbal aphasias and verbal amusias.⁸⁵ Damage to the left side often leads to verbal aphasias, whereas damage to the right often leads to verbal amusias.⁸⁶ My analysis of the literature (only example references listed)^{69,85,87–95} indicates that these brain areas include a lateral-to-medial strip of premotor cortex from the anterior insula (aINS), Broca's area, the anterior dorsal lateral prefrontal cortex (aDLPFC), the pre-supplementary motor area (preSMA), and the anterior cingulate (aCC) (Fig. 5B). The deficits in humans, however, are more complex. Specifically, lesions to songbird IMAN^{83,96} and lesions to the human insula and Broca's^{85,91,94} leads to poor imitation, i.e., disrupted vocal learning, with spared maintenance of stereotyped song or speech. However, in addition, lesions to Broca's and/or DLPFC⁸⁵ lead to poor syntax production in construction of phonemes into words and words into sentences. Lesions to DLPFC also result in uncontrolled echolalia imitation, whereas lesions to pre-SMA and anterior cingulate^{69,88–90,92} result in spontaneous speech arrest, lack of spontaneous speech, and/or loss of emotional tone in speech, but with imitation preserved. Lesions to songbird mMAN lead to a decreased ability in vocal learning (i.e., vocal imitation) and some disruption of syntax,²³ as do lesions to Broca's. It is not clear whether lesions to mMAN lead to singing arrest or reduced emotional tone in singing similar to the effects produced by lesions of the medial anterior premotor cortex in humans.

Lesions to songbird Area X and to the human anterior striatum (the head of the caudate and putamen, Fig. 5C) do not prevent the ability to produce already learned speech, but do result in disruption of vocal learning and disruption of some syntax in birds^{83,97,98} or verbal aphasias and amusias in humans.^{91,93,99–104} More specifically, songbirds have trouble crystallizing onto correct acoustic structure of syllables and syntax heard, and as adults they stutter on syllables that were repeated in tandem before the lesions.^{83,97,98} In humans, the aphasias from subcortical lesions can be a combination of types found with premotor cortical lesions,⁹¹ perhaps because, as is the case in non-human mammals, large cortical areas send connections that converge onto relatively smaller striatal areas.¹⁰⁵ Not many cases have been reported of lesions to the human globus pallidus leading to aphasias,¹⁰⁶ but the fact that this can occur, suggests some link with a striatal vocal area in humans.

Similar to a preliminary report on songbird DLM,¹⁰⁷ damage to anterior portions of the human thalamus (VA, VL) leads to verbal aphasias (Fig. 5C).¹⁰⁸ In humans, there is temporary muteness followed by aphasia deficits that are sometimes greater than those accompanying lesions to the anterior striatum or premotor cortical areas. This greater deficit may occur because there is further convergence of inputs from the striatum into the thalamus. The interpretation of thalamic lesions in humans, however, is not without significant controversy,⁸⁵ perhaps because of small but important differences in lesion locations between patients among studies. The thalamus concentrates many functions into small adjacent nuclei, and thus, a relatively small variance in the location of a lesion may lead to a large difference in the brain function affected.

Comparable Auditory Deficits

Not many studies have investigated the effects of lesions to auditory cerebral areas of birds,^{109–111} and therefore, only relatively rough comparisons can be made with humans and vocal non-learning mammals with such lesions. Lesions to Bengalese finch female NCM and zebra finch female CM appear to result in a significant decline in the ability to form long-term auditory discrimination memories of songs heard.^{111,112} This deficit has some similarity to that which results from lesions to secondary auditory cortex in mammals, where animals have more difficulty forming discriminative memories of complex sounds. In humans, bilateral combined damage to primary auditory cortex and Wernicke's area (Fig. 5B) leads to full auditory agnosia, the inability to consciously recognize any sounds (speech, musical instruments, natural noises, etc.); it does not prevent unconscious perception of sounds.⁸⁵ If the lesion is more restricted to primary auditory cortex, a patient may suffer an inability to process rapid sequencing of sounds. If restricted to Wernicke's, the patient may suffer word-deafness, the inability to identify the sounds of speech (left side) with a preserved ability to identify nonverbal sounds, or tone-deafness (right side), called auditory aphasias or amusias, respectively. It is difficult to ascertain how non-human animals, including birds, perceive sensory stimuli, and therefore it is difficult to make comparisons with humans in regard to perceptual auditory deficits.

The lesions mentioned above that affect vocal and auditory behaviors in vocal learning birds and in humans can affect more than one modality. For example, lesions to IMAN in songbirds^{113,114} and to Broca's and anterior striatum in humans^{85,115} lead to decreased abilities in song/speech perception and discrimination. Lesions to auditory cortices in humans lead to fluent aphasia: patients unconsciously produce long stretches of nonsensical words and sentences (and were once characterized as crazy people).⁸⁵ It is not known if lesions to pallial auditory areas of vocal learning songbirds will result in fluent aphasic singing: long sequences of nonsensical song syllables and motifs. However, it is known that in parrots, lesions to pallial auditory areas do not affect the acoustic structure of already learned vocalizations.¹⁰⁹ This is

similar to the consequences of auditory cortex lesions in humans, where acoustic structure of phonemes and words are not affected.

Taken together, the evidence from behavioral speech/language deficits in humans resulting from damage to known brain areas is consistent with the presence of a posterior-like motor pathway and an anterior-like vocal learning pathway that are similar to the vocal pathways in vocal learning birds. There also appears to be a separate pathway for basic auditory processing and auditory learning in humans, as seen in vocal learning birds. The relative locations of the brain regions in humans appear to be comparable to the relative location of the three pathways in birds. The clearest difference between birds and humans appears to be the greater complexity of the deficits found after lesions in humans. I now ask whether comparisons of patterns of brain activation support the similarities between birds and humans derived from lesion results.

COMPARATIVE BIRD AND HUMAN BRAIN ACTIVATION

Activation by Vocalizing

We can define brain activation as a relatively rapid neural change (milliseconds to minutes) that occurs during production of a behavior and/or processing of a sensory stimulus. Thus, activation includes changes in electrophysiological activity (recorded in both birds and humans, during surgery of patients for the latter), electrical stimulation (birds and humans), motor- and sensory-driven gene expression (birds and non-human mammals), and imaging of activated brain regions (in humans). Not all types of activation occur in the same brain areas and not all approaches are simple to perform. For example, expression of the most commonly studied activity-dependent gene in birds, ZENK, is associated with increased electrophysiological activity in neurons of all cerebral brain subdivisions except for those in the pallidum and in primary sensory receiving areas of the pallium (Fig. 6; e.g., L2).^{116,117} Accumulated ZENK expression levels occur in certain brain areas after a bird sings its learned songs for 10–30 minutes (Fig. 6). However, measurement of gene expression changes in humans after speaking is not possible, and thus, other methods to quantify activity changes in specific brain areas must be used. Two alternatives are functional magnetic resonance imaging (fMRI) and positron emission tomography (PET) scanning. fMRI measures increased blood flow to activated brain areas, whereas PET measures increased glucose usage. It is difficult to image fMRI signals when speaking, as movement of the face causes image distortions. It is easier to do so with PET, as the signal is examined after the person speaks. A general problem with activation and vocal communication studies is that many do not separate neural changes due to vocalizing versus hearing. When an individual vocalizes, he/she hears himself and thus activation in a given brain region, when compared to the silent condition, could be due to either vocalizing and/or hearing. Separation requires comparison of the vocalizing condition with additional control conditions where an individual hears the same sounds while not vocalizing, or vocalizes while deaf.¹¹⁸

In vocal learning birds, activation studies have revealed that all seven comparable cerebral nuclei display ZENK expression that is vocalizing-driven and not hearing-driven;^{5,12,51,118} this is in part how some of the nuclei were initially identified (Fig. 6). In deafened songbirds, these nuclei still display vocalizing-driven ZENK expression when the birds sing.¹¹⁸ Likewise, premotor neural firing has been found in HVC, RA, Nif, lAreaX, and lMAN when songbirds sing.^{10,11,119,120} In deafened birds, similar singing-associated activity still occurs when a bird sings, at least for lMAN.¹¹ The firing in HVC and RA correlates with specific features of produced songs (sequencing of syllables and syllable structure, respectively), whereas firing in lAreaX and lMAN is much more varied and no specific correlating feature has yet been found. However, firing and gene expression in lAreaX, lMAN, as well as RA differ depending upon the social context in which singing occurs (see Brainard, this volume).^{51,121,122} Singing directed to another bird results in lower activation in these

nuclei relative to singing in an undirected manner. On the other hand, HVC appears to be active at a similar firing rate and pattern whenever the bird sings.^{51,123} No difference has been observed between right (the dominant) and left HVC activity during singing in zebra finches, but in song sparrows activity in the left and right HVC is associated with production of specific sequences of song syllables.¹²⁴ Stimulation with electrical pulses to HVC during singing temporarily disrupts song output, i.e., song arrest.¹²⁵

If we compare the songbird HVC data, the brain area in humans that appears to be always activated with any speech task, as measured by PET or fMRI signals, is the face motor cortex.^{126,127} Similar to other songbird vocal nuclei, other human brain areas appear to be activated or not depending upon the context in which speech is produced. Production of verbs and complex sentences can be accompanied by activation in all or a subregion of the strip of cortex anterior to the face motor cortex: the anterior insula, Broca's, DLPFC, pre-SMA, and anterior cingulate.^{126–133} Activation in Broca's, DLPFC, and pre-SMA appears to be higher when speech tasks are more complex, including learning to vocalize new words or sentences, sequencing words into complex syntax, producing non-stereotyped sentences, and thinking about speaking.^{129,134–136} The left brain vocal areas show more activity than their right counterparts during speaking.^{127–129,132} Only one electrophysiological recording study that I am aware of has been conducted on these regions, where premotor speech-related neural activity was found to occur in Broca's area.¹³⁷ Stimulation studies have shown that low threshold electrical stimulation to the face motor cortex, Broca's, or the anterior supplementary areas will cause speech arrest or generation of phonemes or words.^{92,138–140} For other cortical areas anterior or posterior to these, higher stimulation is often required to elicit similar results.

In non-cortical areas, activation has been found in the anterior striatum^{141–143} and the thalamus¹⁴¹ during speaking. Low threshold electrical stimulation to specific ventral lateral and anterior thalamic nuclei, particularly in the left hemisphere, leads to a variety of speech responses, including word repetition, speech arrest, speech acceleration, spontaneous speech, anomia, and verbal aphasia (but also auditory aphasia).¹⁴⁴ I have only found one study that has shown activation in the globus pallidus during speaking.¹³⁰ In non-human mammals and birds, specific comparable nuclei of the midbrain (avian DM and part of mammalian periaqueductal grey (PAG)) and medulla (avian nXII, mammalian ambiguous, and other nuclei) display premotor vocalizing neural firing^{49,145–147} and/or vocalizing-driven gene expression.^{5,12,51}

Activation by Hearing

In vocal learning and vocal non-learning birds, hearing songs or other ethologically relevant sounds results in increased neural firing and/or hearing-driven gene expression in midbrain (MLd), thalamic (Ov), and caudal cerebral (L2, L3, L1, NCM, CM, CSt, and Ai) auditory areas that have helped identify some of these regions as part of an auditory pathway (Fig. 6).^{5,12,51,123,148–152} Activation in the secondary auditory pallial areas NCM and CM in songbirds is higher when they hear species-specific sounds and during auditory learning.^{151,153–157} However, when a bird hears himself vocalize, the gene activation in these secondary pallial areas is less pronounced than when he hears other birds vocalize.⁵¹ Similarly, in both humans and non-human mammals, hearing vocalizations activates midbrain (inferior colliculus), thalamic (medial geniculate), and cerebral (primary auditory and Wernicke's area in humans) regions that are part of the known mammalian auditory pathway^{128,132,135,158–160} Similar to avian NCM and CM, activation in Wernicke's area of humans and a Wernicke's-like area of non-human primates is higher during hearing of species-specific vocalizations, and is less prominent when an animal or patient hears himself speak.^{161–163}

There is some overlap with cerebral areas that show neural firing during vocalizing or hearing, and this depends upon the species. In awake male zebra finches, firing is minimal in vocal nuclei when a bird hears playbacks of song, but greater when he is anesthetized or asleep and presented with playbacks of his own song.^{122,124,164} In song sparrows, the reverse occurs: robust firing is observed in HVC when an awake bird hears playbacks of his own song, and this response is diminished when he is anesthetized.¹²⁴ In both species, the level or number of neurons firing in vocal nuclei during hearing is lower than that during singing. In humans, the face motor cortex, Broca's and/or the DLPFC often show increased activation when a person hears speech or is asked to perform a task that requires thinking in silent speech.¹²⁷⁻¹³⁴ The magnitude of activation is usually lower during hearing than that seen during actual speaking. The anterior insula, Broca's, and DLPFC can also be activated by other factors, such as by engaging working memory,^{165,166} which is a short-term memory that is formed before committing it to long-term storage. A potential flaw of some of these studies is that they incorporate into their design a person hearing instructions in speech, or reading, which is often accompanied by subvocalizing or thinking in silent speech, or by actually speaking. Thus, the non-language task is accompanied by a language task, confounding variables. Further, other studies describe activation in language/speech areas during a non-language/speech task, but actually measure regions adjacent (more anterior or posterior) to those activated by speaking. Thus, presently it is not clear whether areas specifically activated by hearing and speaking can be activated in tasks that do not require language processing, language production, or thinking in silent speech.

Taken together, although there are differences between the results, tasks, and methods used to study brain activation during vocalizing in birds and humans, and although there are discrepancies among studies, the comparative data are consistent with the idea that songbird HVC and RA are more similar in their activation properties to face motor cortex than to any other human brain area and that songbird MAN, Area X, and the anterior part of DLM are more similar in their properties to parts of the human premotor cortex, anterior striatum, and ventral lateral/anterior thalamus, respectively.

A MODEL OF BRAIN PATHWAYS FOR HUMAN LANGUAGE

On the basis of the comparative analyses presented in the previous pages, I will make some predictions about the organization of brain pathways for human language. I argue that, similar to the vocal learning birds, humans have at least three basic cerebral pathways used for learned vocal communication: (1) a posterior vocal pathway, (2) an anterior vocal pathway, and (3) an auditory pathway (Fig. 2D). I suggest that the human posterior vocal pathway consists of the six-layered face motor cortex, with layer 5 neurons sending projections down to the vocal part of the brain-stem central grey and to nucleus ambiguus, controlling the production of speaking and singing. I suggest that the human anterior vocal pathway consists of a cortical-basal-ganglia-thalamic-cortical loop, connecting a strip of premotor cortex, which I tentatively call the language strip (to include part of the anterior insula, Broca's, DLPFC, pre-SMA, and anterior cingulate), to the anterior striatum, to the ventral lateral and/or anterior nuclei of the dorsal thalamus, back to the same strip of cortex (Fig. 2D). If the human vocal pathways are similar to mammalian non-vocal pathways (Fig. 3C), then the human anterior vocal pathway would receive input from the posterior vocal pathway via axonal collaterals from PT-layer 5 neurons of the face motor cortex projecting into the anterior striatum; the human posterior vocal pathway would receive input to the face motor cortex from axonal collaterals of IT-layer 3 or upper layer 5 neurons of the language strip. The major difference between vocal learning and vocal non-learning mammals would be the absence in non-learners of these two types of pathways controlling nucleus ambiguus. The major similarity would be the presence of posterior and anterior motor pathways that control other learned sensorimotor behaviors.

I propose that the human auditory pathway follows the basic mammalian system (Fig. 4). Having a cerebral auditory area would explain why non-human mammals, including a dog, exhibit auditory learning, including learning to understand the meaning of human speech, although presumably with less facility than a human. I have no proposal yet as to how auditory information enters posterior and anterior vocal pathways of humans, as there is no consensus connectivity that can yet be deciphered from the vocal learning birds. The arcuate fibers that traverse a caudal-rostral direction in the human brain have been proposed to carry information from Wernicke's to Broca's,¹⁶⁷ but this has not been demonstrated experimentally.

I suggest that major differences between vocal learning birds and humans are ones of general brain organization and degree. In terms of organization, the avian pallium is nuclear and the mammalian pallium is layered. In terms of degree, according to my hypothesis, the human brain has relatively much more pallial tissue dedicated to vocal behavior than do vocal learning birds. In addition, the human brain is many orders of magnitude bigger than any known vocal learning bird. Humans apparently have more complex syntax, more learned rules in their speech production and perception, and much bigger bodies to control than do any vocal learning bird. Vocal learning bird species, however, are not uniform in their abilities. Some have more complex syntax and continued adult learning whereas others do not. These differences may be controlled by variance in the relative sizes of vocal nuclei and/or the amount of expression of specific genes.^{168,169} Nevertheless, the vocal brain similarities among three vocal learning bird groups are striking and the similarities with humans are intriguing, leading one to wonder how such similarities in distantly related groups could have evolved.

EVOLUTIONARY HYPOTHESES

Three Alternative Hypotheses for Evolution of Brain Pathways for Vocal Learning

Given that auditory pathways in avian, mammalian, and reptilian species are similar, whether or not a given species is a vocal learner, I suggest that the auditory pathway in vocal learning birds and in humans was inherited from their common stem-amniote ancestor, thought to have lived ~320 million years ago.¹⁷⁰ For the evolution of vocal learning brain pathways among birds and in humans, I propose three alternative possibilities⁵: (1) the vocal system in the three vocal learning bird groups and the proposed comparable system in humans all evolved independently; (2) there was a vocal system in the common ancestor of vocal learning birds with seven cerebral nuclei, and a similar system in the common ancestor of vocal learning mammals, that were then lost multiple independent times in closely related bird and mammalian groups; or (3) most, if not all birds, mammals, and perhaps reptiles have vocal learning to various degrees, and songbirds, parrots, hummingbirds, and humans (and perhaps bats and cetaceans) independently amplified the associated brain structures for their more highly developed vocal learning behaviors.

If hypothesis 1 were true, then the evolution of brain pathways for vocal learning may be under strong epigenetic (outside the genome) constraints. The evolution of wings provides an analogy. Wings evolved independently at least four times, in birds, bats, pterosaurs (ancient flying dinosaurs), and insects. In each case, they evolved at the sides of the body, usually one on each side, and not one on the head, the other on the tail, or elsewhere. One hypothesis is that wings evolved in similar ways because of a strong epigenetic constraint, the environmental force of the center of gravity/mass on the body, dictating the most energetically efficient manner for flight.¹⁷¹ If hypothesis 2 were true, then maintenance of vocal learning may be under an environmental/social epigenetic constraint that selects against vocal learning. If hypothesis 3 were true, it would mean that many birds and mammals, and maybe reptiles, have at least primordial brain structures for vocal learning. I believe that a combination of all three hypotheses is true, where both genetic and epigenetic constraints have influenced the evolution of vocal learning.

Genetic Constraints

Because the connections of the anterior and posterior vocal pathways in vocal learning birds bear some resemblance to those of non-vocal pathways in both birds and mammals, pre-existing connectivity was presumably a genetic constraint for the evolution of vocal learning.^{17,22,160,172} In this manner, I argue that a mutational event that caused descending projections of avian arcopallium neurons to synapse onto nXIIIs or mammalian layer 5 neurons of the face motor cortex to synapse onto nucleus ambiguus may be the only major change that is needed to initiate a vocal learning pathway. Thereafter, other vocal brain regions could develop out of adjacent motor brain regions with pre-existing connectivity. Such a mutational event would be expected to occur in genes that regulate synaptic connectivity of upper pallial motor neurons to lower α -motor neurons. This hypothesis requires that avian non-vocal motor learning systems have up to seven nuclei distributed into two pathways in at least six brain subdivisions (the mesopallium, nidopallium, arcopallium, striatum, pallidal-like cells in the striatum, and dorsal thalamus). It would also require that mammalian non-vocal motor learning systems have brain regions distributed in two pathways involving at least four brain subdivisions (the six layers of the cortex, the striatum, the pallidum, and the dorsal thalamus). Not apparent in this view, is the question of whether there is a genetic constraint for auditory information entering vocal learning pathways. Sensory processing neurons projecting into cerebral motor pathways do exist for non-vocal functions of the cerebrum, but I have not been able to extract a consensus-connectivity at this time.

Epigenetic Constraints

Is there an environmental or social factor that selects for or against vocal learning? If selection for vocal learning requires a relatively simple mutational event, then why is it not more common? My graduate student, Adriana Ferreira, and I have brainstormed on possible answers to these questions. We have come up with six possible epigenetic factors for selection for vocal learning, some of which have been previously proposed:^{173,174} (1) individual identification; (2) semantic communication; (3) territory defense; (4) mate attraction; (5) complex syntax; and (6) rapid adaptation to sound propagation in different environments. We believe that the first three factors cannot explain selection for vocal learning. As no two individuals look alike, so too no two individuals within a population appear to sound alike, allowing vocal non-learners to identify individual conspecifics by voice. Many vocal non-learners use calls to communicate semantic information, such as “an eagle above,” “a snake on the ground,” or “a food source,”¹⁷⁵ whereas most vocal learners use their learned vocalizations in more affective, emotional context. Yet, many vocal non-learners use their innate calls and crows to attract mates and defend territories. We believe that factors 5 and 6 in combination with factor 4 can explain selection for vocal learning. Vocal learners, but not vocal non-learners, have the ability to produce more varied syntax, either during vocal development and/or after reaching adulthood in some species. Females of some songbird species appear to prefer more varied syntax.^{6,174,176} Therefore, birds with the ability to produce more vocal variety are likely to be selected for this trait. For sound transmission, vocal non-learners produce their vocalizations best in specific habitats,^{177–180} which makes their vocal behaviors less adaptable to changes in environments. For example, a pigeon’s low frequency vocalizations travel best near the ground, while an eastern phoebe’s higher pitched vocalizations travel better higher in the air. In contrast, vocal learners have the ability to change voice characteristics, either during the lifetime of an individual or through several generations, presumably allowing better group communication in different environments.

We believe that predation is a strong selection factor against vocal learning and this may be why it is so rare. If more varied syntax is attractive to mates, it may also be more attractive to predators. As innate vocalizations tend to be more constant, they are habituated to more easily, potentially becoming part of the background noise. Therefore, in order for a predator not to

habituate to the sounds of his prey, he would have to evolve a neural mechanism to overcome the natural habituation at times when he is hungry. Some findings support the prey side of this view: Okanoya has shown that Bengalese finches that have been bred in captivity without predators for the last 250 years and without human selection for singing behavior, show more varied syntax than their white-backed munia conspecifics still living in the wild from which they derive.¹⁷⁴ Zebra finches bred in captivity show more variation on the songs learned among adults of a colony than do their wild-type conspecifics.¹⁸¹ For both species, females prefer the more complex songs, including the wild munia finches preferring the more varied songs of the domesticated Bengalese finches.^{174,176} Given these findings, we would expect to find more syntax complexity selected for in the wild than currently exists. We argue, as does Okonoya,¹⁷⁴ that it is predatory pressure selecting against it.

CONCLUSION

In this chapter, I have presented the sketches of a hypothesis about the evolution of vocal learning and human language. The analysis demonstrates the value of using a comparative approach to generate insight into the neurobiology of human language. Except for the proposed connectivity of the human vocal brain pathways, various parts of the hypothesis are testable. I suspect that with additional experimentation some of the details will need revision, but that the general principles will hold.

Acknowledgements

This work was funded by National Science Foundation Grant IBN0084357 and the Alan T. Waterman Award. I thank Tony Zimmerman at Duke University for assistance in editing and critical reading of the manuscript.

References

1. Seyfarth RM, Cheney DL, Marler P. Vervet monkey alarm calls: Semantic communication in a free-ranging primate. *Anim Behav* 1980;28:1070–1094.
2. Marler P. Animal communication signals. *Science* 1967;157:769–774. [PubMed: 17842771]
3. Konishi M. The role of auditory feedback in the control of vocalization in the white-crowned sparrow. *Z Tierpsychol* 1965;22:770–783. [PubMed: 5874921]
4. Nottebohm F. The origins of vocal learning. *Am Nat* 1972;106:116–140.
5. Jarvis ED, et al. Behaviourally driven gene expression reveals song nuclei in hummingbird brain. *Nature* 2000;406:628–632. [PubMed: 10949303]
6. Catchpole, CK.; Slater, PJB. *Bird Song: Biological Themes and Variations*. Cambridge University Press; Cambridge, England: 1995.
7. Farabaugh, SM.; Dooling, RJ. Acoustic communication in parrots: Laboratory and field studies of budgerigars, *Melopsittacus undulatus*. In: Kroodsma, DE.; Miller, EH., editors. *Ecology and Evolution of Acoustic Communication in Birds*. Cornell University Press; Ithaca, NY: 1996. p. 97-117.
8. Ferreira A, et al. Vocal communication in hummingbirds II: songs of the sombre hummingbird (Trochilinae) and the rufous-breasted hermit (Phaethornithinae). *Ethology*. Submitted
9. Nottebohm F, Stokes TM, Leonard CM. Central control of song in the canary, *Serinus canarius*. *J Comp Neurol* 1976;165:457–486. [PubMed: 1262540]
10. Yu AC, Margoliash D. Temporal hierarchical control of singing in birds. *Science* 1996;273:1871–1875. [PubMed: 8791594]
11. Hessler NA, Doupe AJ. Singing-related neural activity in a dorsal forebrain-basal ganglia circuit of adult zebra finches. *J Neurosci* 1999;19:10461–10481. [PubMed: 10575043]
12. Jarvis ED, Mello CV. Molecular mapping of brain areas involved in parrot vocal communication. *J Comp Neurol* 2000;419:1–31. [PubMed: 10717637]
13. Striedter GF. The vocal control pathways in budgerigars differ from those in songbirds. *J Comp Neurol* 1994;343:35–56. [PubMed: 8027436]

14. Nottebohm F. Brain pathways for vocal learning in birds: A review of the first 10 years. *Prog Psychobiol Physiol Psychol* 1980;9:85–124.
15. Kroodsma DE, Konishi M. A suboscine bird (eastern phoebe, *Sayornis phoebe*) develops normal song without auditory feedback. *Anim Behav* 1991;42:477–487.
16. Gahr M. Neural song control system of hummingbirds: comparison to swifts, vocal learning (songbirds) and nonlearning (suboscines) passerines, and vocal learning (budgerigars) and nonlearning (dove, owl, gull, quail, chicken) nonpasserines. *J Comp Neurol* 2000;426:182–196. [PubMed: 10982462]
17. Durand SE, et al. Vocal control pathways through the anterior forebrain of a parrot (*Melopsittacus undulatus*). *J Comp Neurol* 1997;377:179–206. [PubMed: 8986880]
18. Vates GE, Vicario DS, Nottebohm F. Reafferent thalamo-“cortical” loops in the song system of oscine songbirds. *J Comp Neurol* 1997;380:275–290. [PubMed: 9100137]
19. Wild JM. Neural pathways for the control of birdsong production. *J Neurobiol* 1997;33:653–670. [PubMed: 9369465]
20. Wild JM, Li D, Eagleton C. Projections of the dorsomedial nucleus of the intercollicular complex (DM) in relation to respiratory-vocal nuclei in the brainstem of pigeon (*Columba livid*) and zebra finch (*Taeniopygia guttata*). *J Comp Neurol* 1997;377:392–413. [PubMed: 8989654]
21. Nottebohm F, Kelley DB, Paton JA. Connections of vocal control nuclei in the canary telencephalon. *J Comp Neurol* 1982;207:344–357. [PubMed: 7119147]
22. Wada K, et al. Differential expression of glutamate receptors in avian neural pathways for learned vocalization. *J Comp Neurol*. Submitted for publication
23. Foster EF, Bottjer SW. Lesions of a telencephalic nucleus in male zebra finches: Influences on vocal behavior in juveniles and adults. *J Neurobiol* 2001;46:142–165. [PubMed: 11153015]
24. Brauth SE, et al. Auditory pathways in the budgerigar. I. Thalamo-telencephalic projections. *Brain Behav Evol* 1987;30:174–199. [PubMed: 3664262]
25. Brauth SE, McHale CM. Auditory pathways in the budgerigar. II. Intratelencephalic pathways. *Brain Behav Evol* 1988;32:193–207. [PubMed: 3233481]
26. Wild JM, Karten HJ, Frost BJ. Connections of the auditory forebrain in the pigeon (*Columba livia*). *J Comp Neurol* 1993;337:32–62. [PubMed: 8276991]
27. Vates GE, et al. Auditory pathways of caudal telencephalon and their relation to the song system of adult male zebra finches. *J Comp Neurol* 1996;366:613–642. [PubMed: 8833113]
28. Carr, CE.; Code, RA. The central auditory system of reptiles and birds. In: Dooling, RJ.; Fay, RR.; Popper, AN., editors. *Comparative Hearing: Birds and reptiles*. 13. Springer; New York: 2000. p. 197-248.
29. Mello CV, et al. Descending auditory pathways in the adult male zebra finch (*Taeniopygia guttata*). *J Comp Neurol* 1998;395:137–160. [PubMed: 9603369]
30. Wild JM. Visual and somatosensory inputs to the avian song system via nucleus uvaformis (Uva) and a comparison with the projections of a similar thalamic nucleus in a nonsongbird, *Columba livia*. *J Comp Neurol* 1994;349:512–535. [PubMed: 7860787]
31. Fortune ES, Margoliash D. Parallel pathways converge onto HVc and adjacent neostriatum of adult male zebra finches (*Taeniopygia guttata*). *J Comp Neurol* 1995;360:413–441. [PubMed: 8543649]
32. Farabaugh SM, Wild JM. Reciprocal connections between primary and secondary auditory pathways in the telencephalon of the budgerigar (*Melopsittacus undulatus*). *Brain Res* 1997;747:18–25. [PubMed: 9042523]
33. Reiner A, et al. Revised nomenclature for avian telencephalon and some related brainstem nuclei. *J Comp Neurol* 2004;473:377–414. [PubMed: 15116397]
34. Reiner A, et al. Songbirds and the revised avian brain nomenclature. *Ann NY Acad Sci* 2004;1016:77–108. [PubMed: 15313771] This volume
35. Jarvis ED, et al. A paradigm shift in understanding the organization, evolution and function of the avian brain. Submitted
36. Karten HJ, Shimizu T. The origins of neocortex: connections and lamination as distinct events in evolution. *J Cogn Neurosci* 1989;1:291–301.

37. Matsumura M, Kubota K. Cortical projection to hand-arm motor area from post-arcuate area in macaque monkeys: a histological study of retrograde transport of horseradish peroxidase. *Neurosci Lett* 1979;11:241–246. [PubMed: 117403]
38. Glickstein M, May JG 3rd, Mercier BE. Corticopontine projection in the macaque: the distribution of labelled cortical cells after large injections of horseradish peroxidase in the pontine nuclei. *J Comp Neurol* 1985;235:343–359. [PubMed: 3998215]
39. Keizer K, Kuypers HG. Distribution of corticospinal neurons with collaterals to the lower brain stem reticular formation in monkey (*Macaca fascicularis*). *Exp Brain Res* 1989;74:311–318. [PubMed: 2924851]
40. Reiner A, et al. Differential morphology of pyramidal tract-type and intratelencephalically projecting-type corticostriatal neurons and their intrastriatal terminals in rats. *J Comp Neurol* 2003;457:420–440. [PubMed: 12561080]
41. Aroniadou VA, Keller A. The patterns and synaptic properties of horizontal intracortical connections in the rat motor cortex. *J Neurophysiol* 1993;70:1553–1569. [PubMed: 7904301]
42. Capaday C, et al. Intracortical connections between motor cortical zones controlling antagonistic muscles in the cat: a combined anatomical and physiological study. *Exp Brain Res* 1998;120:223–232. [PubMed: 9629964]
43. Jacobson S, Trojanowski JQ. Corticothalamic neurons and thalamocortical terminal fields: an investigation in rat using horseradish peroxidase and autoradiography. *Brain Res* 1975;85:385–401. [PubMed: 46175]
44. Fitzpatrick D. The functional organization of local circuits in visual cortex: insights from the study of tree shrew striate cortex. *Cerebral Cortex* 1996;6:329–341. [PubMed: 8670661]
45. Williams H, Vicario DS. Temporal patterning of song production: participation of nucleus uvaeformis of the thalamus. *J Neurobiol* 1993;24:903–912. [PubMed: 8228968]
46. Kuypers HGJM. Corticobulbar connexions to the pons and lower brain-stem in man. *Brain* 1958;81:364–388. [PubMed: 13596471]
47. Kuypers HGJM. Some projections from the peri-central cortex to the pons and lower brain stem in monkey and chimpanzee. *J Comp Neurol* 1958;100:221–255. [PubMed: 13654557]
48. Jurgens U. Neuronal control of mammalian vocalization, with special reference to the squirrel monkey. *Naturwissenschaften* 1998;85:376–388. [PubMed: 9762689]
49. Zhang SP, Bandler R, Davis PJ. Brain stem integration of vocalization: role of the nucleus retroambiguus. *J Neurophysiol* 1995;74:2500–2512. [PubMed: 8747209]
50. Bottjer SW, Johnson F. Circuits, hormones, and learning: vocal behavior in songbirds. *J Neurobiol* 1997;33:602–618. [PubMed: 9369462]
51. Jarvis ED, et al. For whom the bird sings: context-dependent gene expression. *Neuron* 1998;21:775–788. [PubMed: 9808464]
52. Perkel D, Farries M. Complementary “bottom-up” and “top-down” approaches to basal ganglia function. *Curr Opin Neurobiol* 2000;10:725–731. [PubMed: 11240281]
53. Vates GE, Nottebohm F. Feedback circuitry within a song-learning pathway. *Proc Natl Acad Sci USA* 1995;92:5139–5143. [PubMed: 7761463]
54. Foster EF, Mehta RP, Bottjer SW. Axonal connections of the medial magnocellular nucleus of the anterior neostriatum in zebra finches. *J Comp Neurol* 1997;382:364–381. [PubMed: 9183699]
55. Avendano C, Isla AJ, Rausell E. Area 3a in the cat. II. Projections to the motor cortex and their relations to other corticocortical connections. *J Comp Neurol* 1992;321:373–386. [PubMed: 1506475]
56. Reiner A, et al. An immunohistochemical and pathway tracing study of the striatopallidal organization of Area X in the zebra finch. *J Comp Neurol* 2004;469:239–261. [PubMed: 14694537]
57. Alexander GE, Belong MR, Strick PL. Parallel organization of functionally segregated circuits linking basal ganglia and cortex. *Ann Rev Neurosci* 1986;9:357–381. [PubMed: 3085570]
58. Luo M, Ding L, Perkel DJ. An avian basal ganglia pathway essential for vocal learning forms a closed topographic loop. *J Neurosci* 2001;21:6836–6845. [PubMed: 11517271]
59. Alexander GE, Crutcher MD. Functional architecture of basal ganglia circuits: neural substrates of parallel processing. *Trends Neurosci* 1990;13:266–271. [PubMed: 1695401]

60. Alvarez-Buylla A, Kirn JR. Birth, migration, incorporation, and death of vocal control neurons in adult songbirds. *J Neurobiol* 1997;33:585–601. [PubMed: 9369461]
61. Webster, DB.; Popper, AN.; Fay, RR., editors. *The Mammalian Auditory Pathway: Neuroanatomy*. Springer-Verlag; New York: 1992.
62. Karten HJ. Homology and evolutionary origins of the “neocortex”. *Brain Behav Evol* 1991;38:264–272. [PubMed: 1777808]
63. Huffman RF, Henson OW Jr. The descending auditory pathway and acousticomotor systems: connections with the inferior colliculus. *Brain Res Brain Res Rev* 1990;15:295–323. [PubMed: 2289088]
64. Prieto JJ, Winer JA. Layer VI in cat primary auditory cortex: Golgi study and sublaminal origins of projection neurons. *J Comp Neurol* 1999;404:332–358. [PubMed: 9952352]
65. Winer JA, Prieto JJ. Layer V in cat primary auditory cortex (AI): cellular architecture and identification of projection neurons. *J Comp Neurol* 2001;434:379–412. [PubMed: 11343289]
66. Bonke BA, Bonke D, Scheich H. Connectivity of the auditory forebrain nuclei in the guinea fowl (*Numida meleagris*). *Cell Tissue Res* 1979;200:101–121. [PubMed: 91442]
67. McGeorge AJ, Faull RLM. The organization of the projection from the cerebral cortex to the striatum in the rat. *Neuroscience* 1989;29:503–537. [PubMed: 2472578]
68. Simpson HB, Vicario DS. Brain pathways for learned and unlearned vocalizations differ in zebra finches. *J Neurosci* 1990;10:1541–1556. [PubMed: 2332796]
69. Valenstein E. Nonlanguage disorders of speech reflect complex neurologic apparatus. *Geriatrics* 1975;30:117–121. [PubMed: 169183]
70. Jurgens U, Kirzinger A, Von Cramon D. The effects of deep-reaching lesions in the cortical face area on phonation. A combined case report and experimental monkey study. *Cortex* 1982;18:125–139. [PubMed: 7187629]
71. Jurgens, U. Neuronal control of vocal production in non-human and human primates. In: Zimmermann, E.; Newman, JD.; Jurgens, U., editors. *Current Topics in Primate Vocal Communication*. Plenum Press; New York: 1995. p. 199-206.
72. Nottebohm, F. Asymmetries in neural control of vocalizations in the canary. In: Krauthamer, G., editor. *Lateralization in the Nervous System*. Academic Press; New York: 1977. p. 23-44.
73. Rey M, et al. Hemispheric lateralization of motor and speech functions after early brain lesion: study of 73 epileptic patients with intracarotid amytal test. *Neuropsychologia* 1988;26:167–172. [PubMed: 3129671]
74. Hertz-Pannier L, et al. Late plasticity for language in a child’s non-dominant hemisphere: a pre- and post-surgery fMRI study. *Brain* 2002;125:361–372. [PubMed: 11844736]
75. Lavenex PB. Lesions in the budgerigar vocal control nucleus NLC affect production, but not memory, of English words and natural vocalizations. *J Comp Neurol* 2000;421:437–460. [PubMed: 10842208]
76. Kirzinger A, Jurgens U. Cortical lesion effects and vocalization in the squirrel monkey. *Brain Res* 1982;233:299–315. [PubMed: 7059813]
77. Brown J. Loss of vocalizations caused by lesions in the nucleus mesencephalicus lateralis of the Redwinged Blackbird. *Am Zool* 1965;5:693.
78. Seller T. Midbrain vocalization centers in birds. *Trends Neurosci* 1981;12:301–303.
79. Jurgens U. The role of the periaqueductal grey in vocal behaviour. *Behav Brain Res* 1994;62:107–117. [PubMed: 7945960]
80. Esposito A, et al. Complete mutism after midbrain periaqueductal gray lesion. *Neuroreport* 1999;10:681–685. [PubMed: 10208530]
81. Hosino T, Okanoya K. Lesion of a higher-order song nucleus disrupts phrase level complexity in Bengalese finches. *Neuroreport* 2000;11:2091–2095. [PubMed: 10923650]
82. Plummer TK, Striedter GF. Brain lesions that impair vocal imitation in adult budgerigars. *J Neurobiol* 2002;53:413–428. [PubMed: 12382268]
83. Scharff C, Nottebohm F. A comparative study of the behavioral deficits following lesions of various parts of the zebra finch song system: implications for vocal learning. *J Neurosci* 1991;11:2896–2913. [PubMed: 1880555]

84. Nottebohm F, et al. Song learning in birds: the relation between perception and production. *Phil Trans Royal Soc Lond B Biol Sci* 1990;329:115–124.
85. Benson, DF.; Ardila, A. *Aphasia: A Clinical Perspective*. Oxford University Press; New York: 1996.
86. Berman IW. Musical functioning, speech lateralization and the amusias. *South African Med J* 1981;59:78–81.
87. Broca P. Nouvelle observation d'aphemie produite par une lesion de la moitie posterieure des deuxieme et troisieme circonvolutions frontales. *Bull Soc Anatomy Paris* 1861;4:398–407.
88. Nielsen JM, Jacobs LL. Bilateral lesions of the anterior cingulate gyri. *Bull Los Angeles Neurological Soc* 1951;16:231–234.
89. Barris RW, Schuman MD, Schuman HR. Bilateral anterior cingulate gyrus lesions: Syndrome of the anterior cingulate gyri. *Neurology* 1953;3:44–52. [PubMed: 13013498]
90. Rubens AB. Aphasia with infarction in the territory of the anterior cerebral artery. *Cortex* 1975;11:239–250. [PubMed: 1204364]
91. Mohr, JP. Broca's area and Broca's aphasia. In: Whitaker, HA., editor. *Studies in Neurolinguistics*. 1. Academic Press; New York: 1976. p. 201-235.
92. Jonas S. The supplementary motor region and speech emission. *J Commun Disorders* 1981;14:349–373.
93. Cummings JL. Frontal-subcortical circuits and human behavior. *Arch Neurol* 1993;50:873–880. [PubMed: 8352676]
94. Dronkers NF. A new brain region for coordinating speech articulation. *Nature* 1996;384:159–161. [PubMed: 8906789]
95. Grodzinsky Y. The neurology of syntax: language use without Broca's area. *Behav Brain Sci* 2000;23:1–21. [PubMed: 11303337]discussion 21–71
96. Bottjer SW, Miesner EA, Arnold AP. Forebrain lesions disrupt development but not maintenance of song in passerine birds. *Science* 1984;224:901–903. [PubMed: 6719123]
97. Sohrabji F, Nordeen EJ, Nordeen KW. Selective impairment of song learning following lesions of a forebrain nucleus in the juvenile zebra finch. *Behav Neural Biol* 1990;53:51–63. [PubMed: 2302141]
98. Kobayashi K, Uno H, Okanoya K. Partial lesions in the anterior forebrain pathway affect song production in adult Bengalese finches. *Neuroreport* 2001;12:353–358. [PubMed: 11209949]
99. Bechtereva NP, et al. Neurophysiological codes of words in subcortical structures of the human brain. *Brain Language* 1979;7:143–163.
100. Leicester J. Central deafness and subcortical motor aphasia. *Brain Language* 1980;10:224–242.
101. Damasio AR, et al. Aphasia with nonhemorrhagic lesions in the basal ganglia and internal capsule. *Arch Neurol* 1982;39:15–24. [PubMed: 7055442]
102. Alexander MP, Naeser MA, Palumbo CL. Correlations of subcortical CT lesion sites and aphasia profiles. *Brain* 1987;110:961–991. [PubMed: 3651803]
103. Speedie LJ, et al. Disruption of automatic speech following a right basal ganglia lesion. *Neurology* 1993;43:1768–1774. [PubMed: 8414029]
104. Lieberman, P. *Human Language and Our Reptilian Brain: The Subcortical Bases of Speech, Syntax, and Thought*. Harvard University Press; Cambridge: 2000.
105. Beiser DG, Hua SE, Houk JC. Network models of the basal ganglia. *Curr Opin Neurobiol* 1997;7:185–190. [PubMed: 9142759]
106. Strub RL. Frontal lobe syndrome in a patient with bilateral globus pallidus lesions. *Arch Neurol* 1989;46:1024–1027. [PubMed: 2775008]
107. Halsema KA, Bottjer SW. Lesioning afferent input to a forebrain nucleus disrupts vocal learning in zebra finches. *Soc Neurosci Abstracts* 1991;17:1052.
108. Graff-Radford NR, et al. Nonhaemorrhagic thalamic infarction. Clinical, neuropsychological and electrophysiological findings in four anatomical groups defined by computerized tomography. *Brain* 1985;108:485–516. [PubMed: 4005533]
109. Hall WS, Brauth SE, Heaton JT. Comparison of the effects of lesions in nucleus basalis and field "L" on vocal learning and performance in the budgerigar (*Melopsittacus undulatus*). *Brain Behav Evol* 1994;44:133–148. [PubMed: 7987662]

110. Brauth SE, et al. Functional anatomy of forebrain auditory pathways in the budgerigar (*Melopsittacus undulatus*). *Brain Behav Evol* 1994;44:210–233. [PubMed: 7842282]
111. MacDougall-Shackleton SA, Hulse SH, Ball GF. Neural bases of song preferences in female zebra finches (*Taeniopygia guttata*). *Neuroreport* 1998;9:3047–3052. [PubMed: 9804314]
112. Ikebuchi M, Okanoya K. Brain site for female choice coincides with the locus of gene expression in a songbird. Submitted for publication
113. Scharff C, Nottebohm F, Cynx J. Conspecific and heterospecific song discrimination in male zebra finches with lesions in the anterior forebrain pathway. *J Neurobiol* 1998;36:81–90. [PubMed: 9658340]
114. Burt J, et al. Lesions of the anterior forebrain song control pathway in female canaries affect song perception in an operant task. *J Neurobiol* 2000;42:1–13. [PubMed: 10623896]
115. Freedman M, Alexander MP, Naeser MA. Anatomic basis of transcortical motor aphasia. *Neurology* 1984;34:409–417. [PubMed: 6538298]
116. Mello CV, Clayton DF. Differential induction of the ZENK gene in the avian forebrain and song control circuit after metrazole-induced depolarization. *J Neurobiol* 1995;26:145–161. [PubMed: 7536234]
117. Jarvis, ED. Brains and birdsong. In: Marler, P.; Slabbekoorn, H., editors. *Nature's Music: The Science of Birdsong*. Elsevier-Academic Press; 2004. In press
118. Jarvis ED, Nottebohm F. Motor-driven gene expression. *Proc Natl Acad Sci USA* 1997;94:4097–4102. [PubMed: 9108111]
119. McCasland JS. Neuronal control of bird song production. *J Neurosci* 1987;7:23–39. [PubMed: 3806194]
120. Hahnloser RHR, Kozhevnikov AA, Fee MS. An ultra-sparse code underlies the generation of neural sequences in a songbird. *Nature* 2002;419:65–70. [PubMed: 12214232]
121. Hessler NA, Doupe AJ. Social context modulates singing-related neural activity in the songbird forebrain. *Nature Neurosci* 1999;2:209–211. [PubMed: 10195211]
122. Dave A, Margoliash D. Song replay during sleep and computational rules for sensorimotor vocal learning. *Science* 2000;290:812–816. [PubMed: 11052946]
123. Jarvis ED, et al. A framework for integrating the songbird brain. *J Comp Physiol A Neuroethol Sens Neural Behav Physiol* 2002;188:961–980. [PubMed: 12471494]
124. Nealen PM, Schmidt MF. Comparative approaches to avian song system function: insights into auditory and motor processing. *J Comp Physiol A Neuroethol Sens Neural Behav Physiol* 2002;188:929–941. [PubMed: 12471492]
125. Vu ET, Schmidt MF, Mazurek ME. Interhemispheric coordination of premotor neural activity during singing in adult zebra finches. *J Neurosci* 1998;18:9088–9098. [PubMed: 9787012]
126. Petersen SE, et al. Positron emission tomographic studies of the cortical anatomy of single-word processing. *Nature* 1988;331:585–589. [PubMed: 3277066]
127. Rosen HJ, et al. Comparison of brain activation during word retrieval done silently and aloud using fMRI. *Brain Cogn* 2000;42:201–217. [PubMed: 10744920]
128. Price CJ, et al. Hearing and saying. The functional neuro-anatomy of auditory word processing. *Brain* 1996;119:919–931. [PubMed: 8673502]
129. Poeppel D. A critical review of PET studies of phonological processing. *Brain Lang* 1996;55:317–385. [PubMed: 8954603]
130. Wise RJ, et al. Brain regions involved in articulation. *Lancet* 1999;353:1057–1061. [PubMed: 10199354]
131. Crosson B, et al. Activity in the paracingulate and cingulate sulci during word generation: an fMRI study of functional anatomy. *Cerebral Cortex* 1999;9:307–316. [PubMed: 10426410]
132. Papathanassiou D, et al. A common language network for comprehension and production: a contribution to the definition of language epicenters with PET. *Neuroimage* 2000;11:347–357. [PubMed: 10725191]
133. Palmer ED, et al. An event-related fMRI study of overt and covert word stem completion. *Neuroimage* 2001;14:182–193. [PubMed: 11525327]

134. Hinke R, et al. Functional magnetic resonance imaging of Broca's area during internal speech. *Neuroreport* 1993;4:675–678. [PubMed: 8347806]
135. Bookheimer SY, et al. Activation of language cortex with automatic speech tasks. *Neurology* 2000;55:1151–1157. [PubMed: 11071493]
136. Buckner RL, Kelley WM, Petersen SE. Frontal cortex contributes to human memory formation. *Nat Neurosci* 1999;2:311–314. [PubMed: 10204536]
137. Fried I, Ojemann GA, Fetz EE. Language-related potentials specific to human language cortex. *Science* 1981;212:353–356. [PubMed: 7209537]
138. Fried I, et al. Functional organization of human supplementary motor cortex studied by electrical stimulation. *J Neurosci* 1991;11:3656–3666. [PubMed: 1941101]
139. Ojemann GA. Cortical organization of language. *J Neurosci* 1991;11:2281–2287. [PubMed: 1869914]
140. Ojemann GA. The neurobiology of language and verbal memory: observations from awake neurosurgery. *Int J Psychophysiol* 2003;48:141–146. [PubMed: 12763571]
141. Wallesch CW, et al. Observations on regional cerebral blood flow in cortical and subcortical structures during language production in normal man. *Brain Lang* 1985;25:224–233. [PubMed: 3877544]
142. Klein D, et al. Left putaminal activation when speaking a second language: evidence from PET. *Neuroreport* 1994;5:2295–2297. [PubMed: 7881049]
143. Wildgruber D, Ackermann H, Grodd W. Differential contributions of motor cortex, basal ganglia, and cerebellum to speech motor control: effects of syllable repetition rate evaluated by fMRI. *Neuroimage* 2001;13:101–109. [PubMed: 11133313]
144. Johnson MD, Ojemann GA. The role of the human thalamus in language and memory: evidence from electrophysiological studies. *Brain Cogn* 2000;42:218–230. [PubMed: 10744921]
145. Larson CR. On the relation of PAG neurons to laryngeal and respiratory muscles during vocalization in the monkey. *Brain Res* 1991;552:77–86. [PubMed: 1913183]
146. Dusterhoff F, Hausler U, Jurgens U. Neuronal activity in the periaqueductal gray and bordering structures during vocal communication in the squirrel monkey. *Neuroscience* 2004;123:53–60. [PubMed: 14667441]
147. Larson CR, Yajima Y, Ko P. Modification in activity of medullary respiratory-related neurons for vocalization and swallowing. *J Neurophysiol* 1994;71:2294–2304. [PubMed: 7931518]
148. Biederman-Thorson M. Auditory responses of units in the ovoid nucleus and cerebrum (field L) of the ring dove. *Brain Res* 1970;24:247–256. [PubMed: 5490285]
149. Mello CV, Clayton DF. Song-induced ZENK gene expression in auditory pathways of songbird brain and its relation to the song control system. *J Neurosci* 1994;14:6652–6666. [PubMed: 7965067]
150. Cohen YE, Knudsen EI. Auditory tuning for spatial cues in the barn owl basal ganglia. *J Neurophysiol* 1994;72:285–298. [PubMed: 7965012]
151. Chew SJ, et al. Decrements in auditory responses to a repeated conspecific song are long-lasting and require two periods of protein synthesis in the songbird forebrain. *Proc Natl Acad Sci USA* 1995;92:3406–3410. [PubMed: 7724575]
152. Cohen YE, Knudsen EI. Representation of frequency in the primary auditory field of the barn owl forebrain. *J Neurophysiol* 1996;76:3682–3692. [PubMed: 8985866]
153. Mello CV, Vicario DS, Clayton DF. Song presentation induces gene expression in the songbird forebrain. *Proc Natl Acad Sci USA* 1992;89:6818–6822. [PubMed: 1495970]
154. Mello CV, Nottebohm F, Clayton D. Repeated exposure to one song leads to a rapid and persistent decline in an immediate early gene's response to that song in zebra finch telencephalon. *J Neurosci* 1995;15:6919–6925. [PubMed: 7472448]
155. Jarvis ED, Mello CV, Nottebohm F. Associative learning and stimulus novelty influence the song-induced expression of an immediate early gene in the canary forebrain. *Learn Mem* 1995;2:62–80. [PubMed: 10467567]
156. Bolhuis JJ, et al. Localized immediate early gene expression related to the strength of song learning in socially reared zebra finches. *Eur J Neurosci* 2001;13:2165–2170. [PubMed: 11422458]

157. Gentner TQ, Margoliash D. Neuronal populations and single cells representing learned auditory objects. *Nature* 2003;424:669–674. [PubMed: 12904792]
158. Rouiller EM, et al. Mapping of c-fos expression elicited by pure tones stimulation in the auditory pathways of the rat, with emphasis on the cochlear nucleus. *Neurosci Lett* 1992;144:19–24. [PubMed: 1436702]
159. Friauf E. Tonotopic order in the adult and developing auditory system of the rat as shown by c-fos immunocytochemistry. *Eur J Neurosci* 1992;4:798–812. [PubMed: 12106303]
160. Lieberman P. On the nature and evolution of the neural bases of human language. *Am J Phys Anthropol Suppl* 2002;35:36–62.
161. Muller-Preuss P, Ploog D. Inhibition of auditory cortical neurons during phonation. *Brain Res* 1981;215:61–76. [PubMed: 7260601]
162. Creutzfeldt O, Ojemann G, Lettich E. Neuronal activity in the human lateral temporal lobe. I. Responses to speech. *Exp Brain Res* 1989;77:451–475. [PubMed: 2806441]
163. Creutzfeldt O, Ojemann G, Lettich E. Neuronal activity in the human lateral temporal lobe. II. Responses to the subjects own voice. *Exp Brain Res* 1989;77:476–489. [PubMed: 2806442]
164. Cardin JA, Schmidt MF. Song system auditory responses are stable and highly tuned during sedation, rapidly modulated and unselective during wakefulness, and suppressed by arousal. *J Neurophysiol* 2003;90:2884–2899. [PubMed: 12878713]
165. MacLeod AK, et al. Right anterior prefrontal cortex activation during semantic monitoring and working memory. *Neuroimage* 1998;7:41–48. [PubMed: 9500832]
166. Zhang JX, Leung HC, Johnson MK. Frontal activations associated with accessing and evaluating information in working memory: an fMRI study. *Neuroimage* 2003;20:1531–1539. [PubMed: 14642465]
167. Geschwind N. Specializations of the human brain. *Sci Am* 1979;241:180–199. [PubMed: 493918]
168. Devoogd TJ, et al. Relations between song repertoire size and the volume of brain nuclei related to song: comparative evolutionary analyses amongst oscine birds. *Proc R Soc London B* 1993;254:75–82.
169. Wada, K.; Jarvis, ED. Genes and Syntax. Manuscript in preparation
170. Evans, SE. General discussion II: amniote evolution. In: Bock, GR.; Cardew, G., editors. *Evolutionary Developmental Biology of the Cerebral Cortex*. 228. John Wiley & Sons; Chichester: 2000. p. 109-113.
171. Tarsitano SF, et al. On the evolution of feathers from an aerodynamic and constructional view point. *Am Zool* 2000;40:676–686.
172. Farries MA. The oscine song system considered in the context of the avian brain: lessons learned from comparative neurobiology. *Brain Behav Evol* 2001;58:80–100. [PubMed: 11805375]
173. Morton E. Ecological sources of selection on avian sounds. *Am Natural* 1975;109:17–34.
174. Okanoya, K. Sexual display as a syntactical vehicle: the evolution of syntax in birdsong and human language through sexual selection. In: Wray, A., editor. *The Transition to Language*. Oxford University Press; Oxford: 2002. p. 46-63.
175. Marler P, Dufty A, Pickert R. Vocal communication in the domestic chicken: I. Does a sender communicate information about the quality of a food referent to a receiver? *Anim Behav* 1986;34:188–193.
176. Tchernichovski O, Schwabl H, Nottebohm F. Context determines the sex appeal of male zebra finch song. *Anim Behav* 1998;55:1003–1010. [PubMed: 9632485]
177. Marten K, Quine D, Marler P. Sound transmission and its significance for animal vocalization II. Tropical Forest Habitats. *Behav Ecol Sociobiol* 1977;2:291–302.
178. Marten K, Marler P. Sound transmission and its significance for animal vocalization I. Temperate habitats. *Behav Ecol Sociobiol* 1977;2:271–290.
179. Wiley RH. Physical constraints on acoustic communication in the atmosphere: implications for the evolution of animal vocalisations. *Behav Ecol Sociobiol* 1978;3:69–94.
180. McCracken KG, Sheldon FH. Avian vocalizations and phylogenetic signal. *Proc Natl Acad Sci USA* 1997;94:3833–3836. [PubMed: 9108064]

181. Zann, RA. *The Zebra Finch: A Synthesis of Field and Laboratory Studies*. Oxford University Press; New York: 1996. Chapter 10: Vocalizations; p. 196-247.
182. Novacek MJ. Mammalian phylogeny: shaking the tree. *Nature* 1992;356:121–125. [PubMed: 1545862]
183. Novacek MJ. Mammalian phylogeny: genes and supertrees. *Curr Biol* 2001;11:R573–575. [PubMed: 11509258]
184. Sibley, CG.; Ahlquist, JE. *Phylogeny and Classification of Birds: A Study in Molecular Evolution*. Yale University Press; New Haven, CT: 1990.

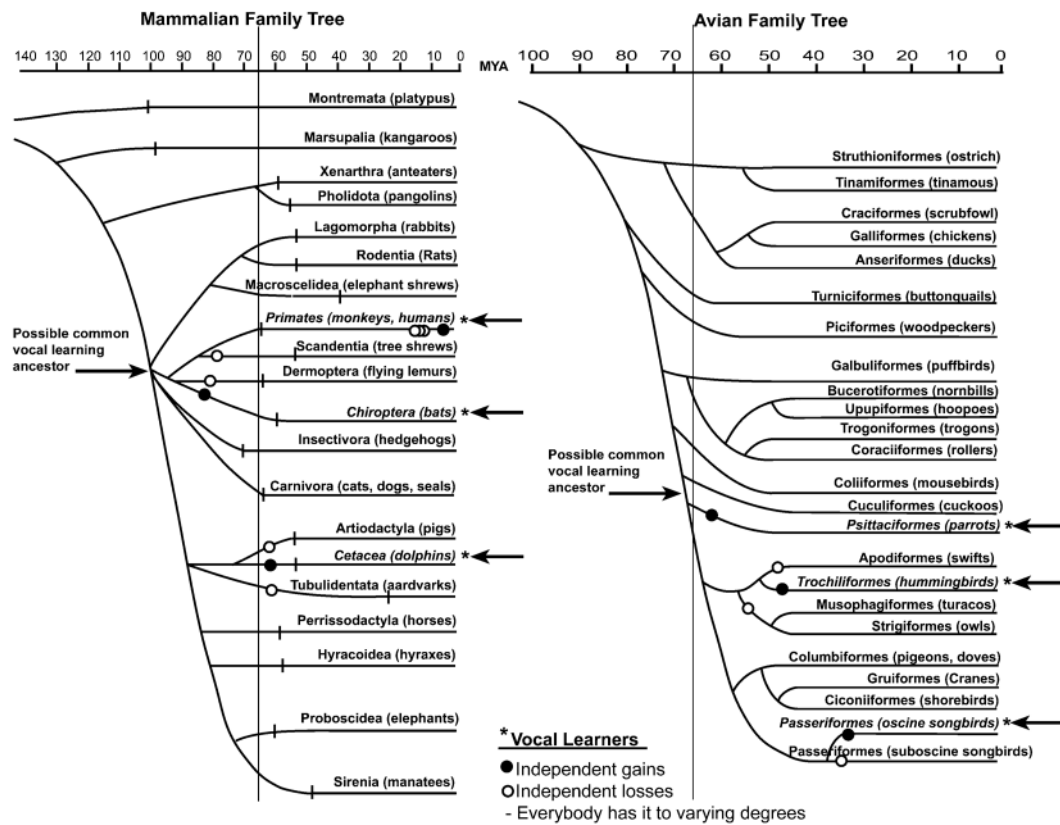


FIGURE 1.

Family trees of living mammalian and avian orders. The mammalian tree is derived from the morphological analysis by Novacek,^{182,183} horizontal lines indicate extent of geologic evidence from fossils. The avian tree is derived from DNA-DNA hybridization analysis by Sibley and Alquist (page 838).¹⁸⁴ The Latin name of each order is given along with examples of common species. Passeriformes are divided into its two suborders, suboscine and oscine songbirds. The vertical line down the trees indicates the cretaceous-tertiary boundary, the time of the dinosaur extinction; MYA=millions of years ago. Open and closed circles show the minimal ancestral nodes where vocal learning could have either evolved independently or been lost independently. Independent losses would have at least required one common vocal learning ancestor, located by the right-facing arrows. Within primates, there would have to have been at least seven independent losses (tree shrews, prosimians, new and old world monkeys, apes, and chimps) followed by the regaining of vocal learning in humans (assuming that all non-human primates are vocal non-learners). Both trees are modified here from the original sources¹⁸²⁻¹⁸⁴ such that they include updated information and are stylistically more comparable. The trees are not meant to present the final dogma of mammalian and avian evolution, as there are many differences of opinion among scientists. Rather, the trees presented here are those that lead to more conservative interpretations of the evolution of vocal learning. For example, one alternative view of avian evolution posted on <<http://tolweb.org/tree?group=Neornithes&contgroup=Aves>> as of 2/15/2004 would have resulted in the interpretation of 16 independent losses of vocal learning instead of three.

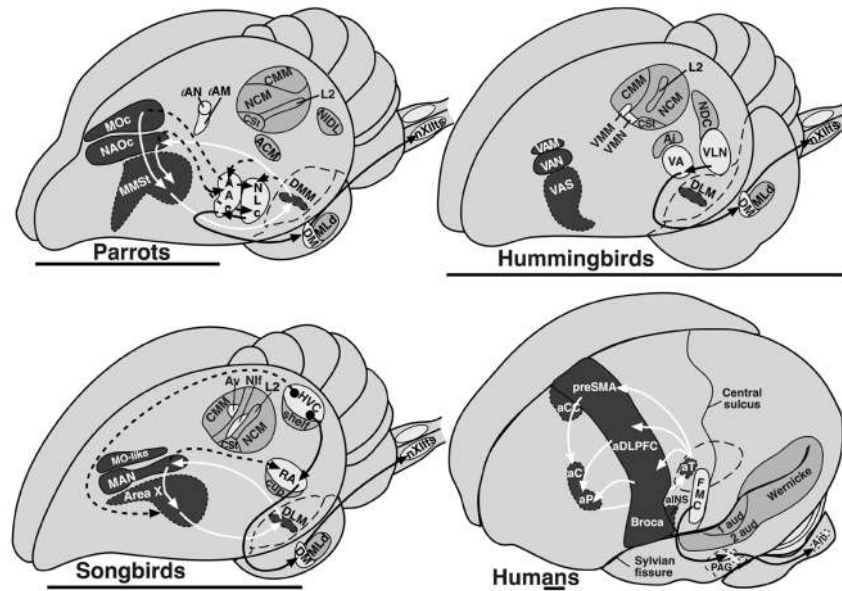
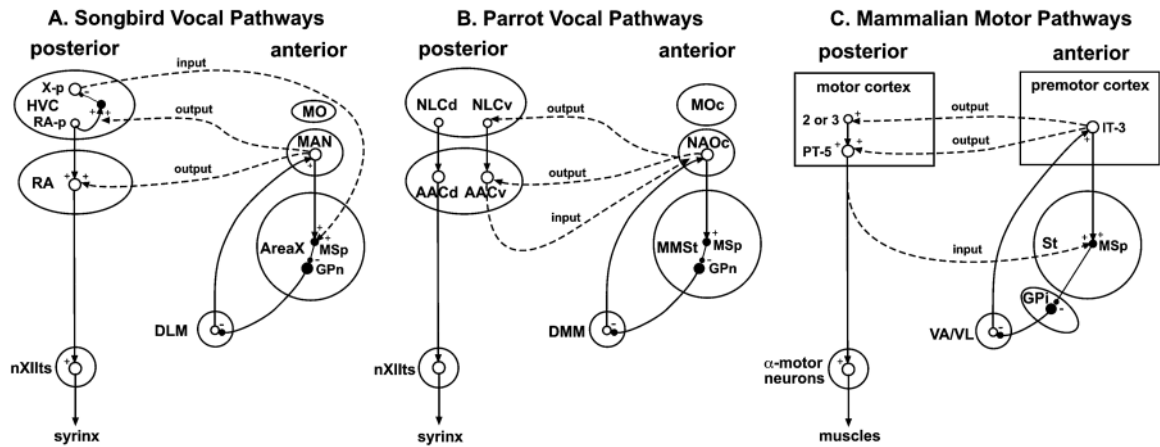


FIGURE 2.

Proposed comparable vocal and auditory brain areas among vocal learning birds and humans: (A) parrot, (B) hummingbird, (C) songbird, and (D) human. Left hemispheres are shown, as this is the dominant side for human language. *White regions* and *black arrows* indicate proposed posterior vocal pathways; *dark grey regions* and *white arrows* indicate proposed anterior vocal pathways; *dashed lines* show connections between the two vocal pathways; *light grey* indicates auditory regions. For simplification, not all connections are shown. The globus pallidus in the human brain, also not shown, is presumably part of the anterior pathway as in non-vocal pathways of mammals. Basal ganglia, thalamic, and midbrain (for the human brain) regions are drawn with *dashed-line* boundaries to indicate that they are deeper in the brain relative to the anatomical structures above them. The anatomical boundaries drawn for the proposed human brain regions involved in vocal and auditory processing should be interpreted conservatively and for heuristic purposes only. Human brain lesions and brain imaging studies do not allow one to determine functional anatomical boundaries with high resolution. Scale bar: ~7 mm. Abbreviations are in Table 1.

**FIGURE 3.**

Comparative and simplified connectivity of posterior and anterior vocal pathways in (A) songbirds, (B) parrots, and (C) mammals. *Dashed lines*: connections between posterior anterior pathways; inputs and outputs are labeled relative to anterior pathways. Output from songbird MAN to HVC and RA is not from the same neurons; medial MAN neurons project to HVC, lateral MAN neurons project to RA. ○, excitatory neurons; • inhibitory neurons; +, excitatory glutamate neurotransmitter release; – inhibitory GABA release. MSp, medium spiny neurons. GPn, globus pallidus-like neuron in songbird Area X and parrot MMSt. Only the direct pathway through the mammalian basal ganglia (St to GPi) is shown as this is the one most similar to Area X connectivity (MSp to GPn).⁵⁶ X-p, X-projecting neuron of HVC. RA-p, RA-projecting neuron of HVC. PT-5, pyramidal tract neuron of motor cortex layer 5. IT-3, Intratelencephalic projecting neuron of layer 3. Connections that need validation for this model to be correct are whether collaterals of the same neurons of mMAN project to mArea X and to HVC, as opposed to different neurons, whether input from HVC into Area X is onto the Area X MSp neurons, whether the microcircuitry in parrot MMSt is the same as in songbirds, whether the collaterals of single IT-3 neurons of mammal cortex send branches to both layers 3 and 5 of motor cortex or just to one layer per IT-3 neuron. Abbreviation are in Table 1.

A basic auditory pathway

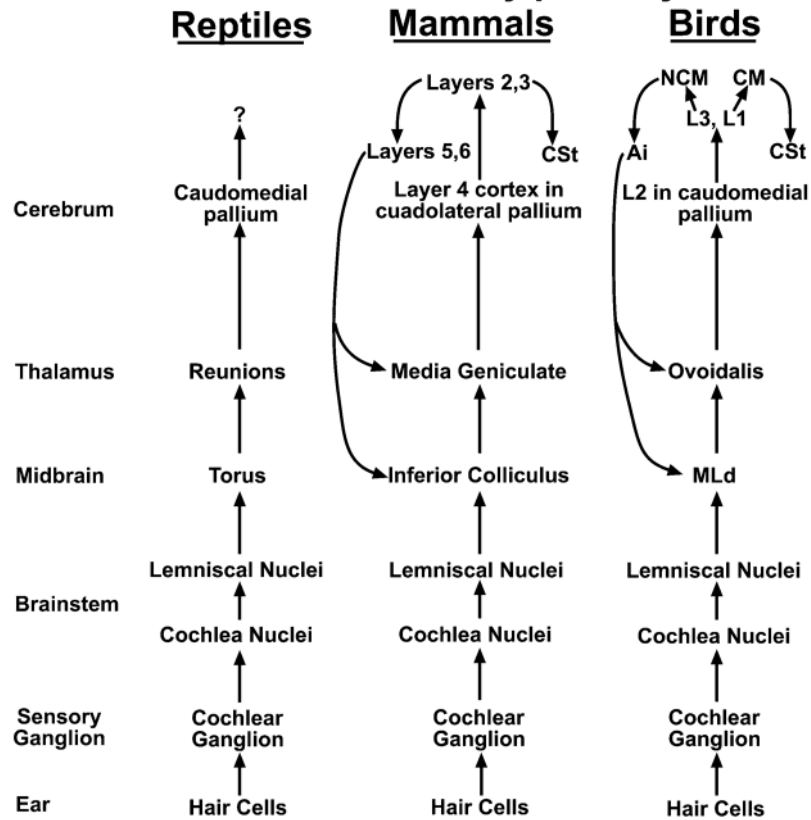


FIGURE 4. Comparative and simplified connectivity among auditory pathways in reptiles, mammals, and birds, placed in order from left to right of the most recently evolved. The connectivity from CM to CSt in birds needs verification by retrograde tracing. Abbreviations are in Table 1.

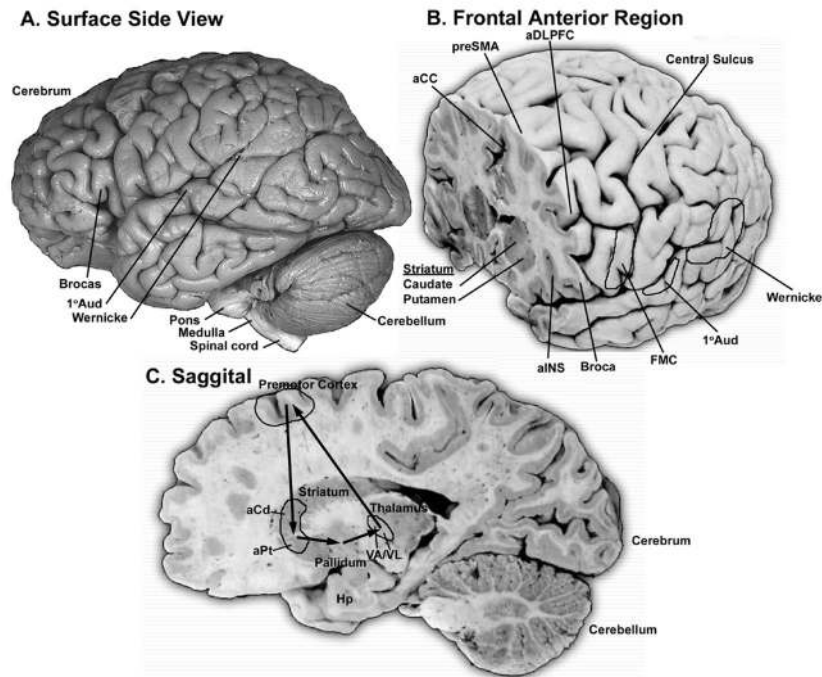


FIGURE 5. Human brain areas where damage results in speaking and/or hearing deficits. **(A)** Surface view of the left side of a human brain. **(B)** Frontal section cut through the prefrontal areas that show verbal aphasia and brain activation when speaking. Also highlighted are the face motor cortex (FMC) and auditory areas. **(C)** Saggital section highlighting anterior, cortical, basal ganglia, and thalamic areas that when damaged appear to lead to aphasia deficits. The *arrows* indicate proposed connectivity based upon that found in non-human mammals. The exact anatomical boundaries drawn for the proposed brain regions involved in vocal and auditory processing should be interpreted conservatively and for heuristic purposes only. Human brain lesions and brain imaging studies do not allow one to determine functional anatomical boundaries with high resolution. The image in **A** is from John W. Sundsten of the Digital Anatomist Project <<http://www9.biostr.washington.edu/da.html>>; Those in **B** and **C**, are from S. Mark Williams at the Duke University Medical Center. All images are used with permission. Abbreviations are in Table 1.

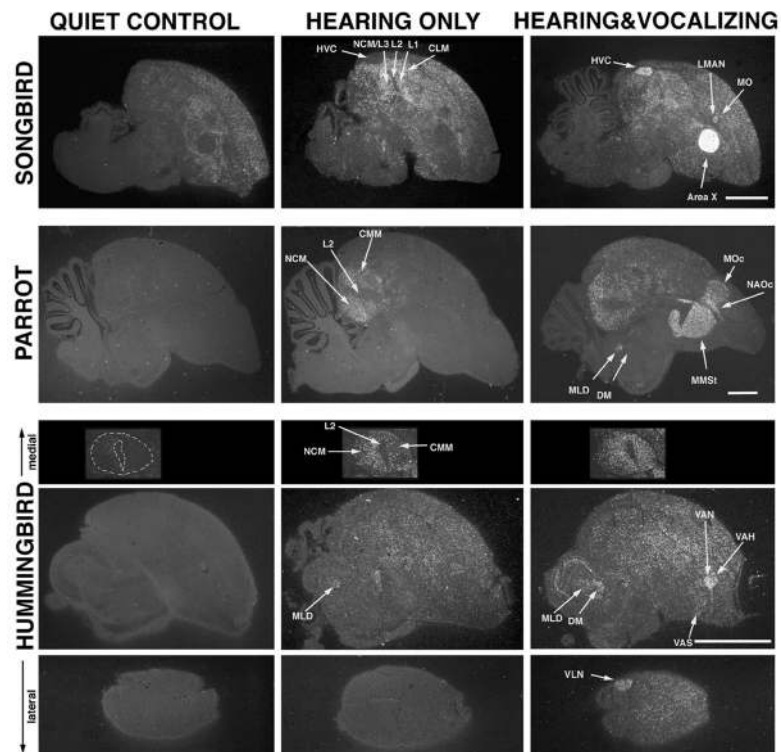


FIGURE 6. Some of the brain areas that show hearing and vocalizing-driven ZENK gene expression in vocal learning birds: songbirds (canary), parrots (budgerigar), and hummingbirds (sombre). Each image is a sagittal section each from a different bird of a different behavioral condition for 30 minutes; white label is ZENK mRNA gene expression, accumulated from over 30-minutes; grey background is cresyl violet stained cells. Quiet control animals did not hear songs or sing for an extended period of time. Hearing only animals heard playbacks of their species-specific songs. Hearing & Vocalizing animals heard similar playbacks and sang. The quiet control canary was actively moving around, causing ZENK expression in areas around vocal nuclei. It is not possible to have all activated brain regions in one section. In parrots, the HVC analogue, NLC (not shown), is situated more laterally, and it is also in hummingbirds (VLN shown). The auditory activated areas NCM and CMM in hummingbirds are shown without the rest of the brain. In the vocalizing canary, MO is not distinctly revealed by ZENK, whereas it is in zebra finches.⁵¹ The MO analogue in hummingbirds, VAH, is flat and small. Area X, MMSt, and VAS of songbirds, parrots and hummingbirds respectively are all in the same area of the striatum, but have different vocalizing-driven gene expression levels and different shapes. Songbird images are from ref. ¹¹⁸, parrot from ref. ¹², and hummingbird from ref. ⁵. Scale bar 1mm.

TABLE 1

Abbreviations used in text

AAC	central nucleus of the anterior arcopallium	AACd	central nucleus of the anterior arcopallium, dorsal part
AACv	central nucleus of the anterior arcopallium, ventral part	Ai	intermediate arcopallium
ACM	caudal medial arcopallium	aDLPFC	dorsal lateral prefrontal cortex
aCC	anterior cingulate cortex	aCd	anterior caudate
aINS	anterior insula cortex	Am	nucleus ambiguus
aPt	anterior putamen	aT	anterior thalamus
Area X	area X of the striatum	Av	avalanch
CMM	caudal medial mesopallium	CM	caudal mesopallium
CSt	caudal striatum	DLM	medial nucleus of dorsolateral thalamus
DM	dorsal medial nucleus of the midbrain	DMM	magnocellular nucleus of the dorsomedial thalamus (a letter-based name)
FMC	face motor cortex	HVC	field L2
MMS	magnocellular nucleus of the anterior striatum	L2	field L2
MLd	mesencephalic lateral dorsal nucleus	MAN	magnocellular nucleus of anterior nidopallium
NCM	caudal medial nidopallium	MOc	oval nucleus of the mesopallium complex
NIDL	Intermediate dorsal lateral nidopallium	NAOc	oval nucleus of the anterior nidopallium complex
NLC	central nucleus of the lateral nidopallium	NDC	caudal dorsal nidopallium
Ov	nucleus ovioidalis	Nif	Interfacial nucleus of the nidopallium
preSMA	pre-supplementary motor area	nXIIts	tracheosyringeal subdivision of the hypoglossal nucleus
RA	robust nucleus of the arcopallium	PAG	periaqueductal grey
VA	vocal nucleus of the arcopallium	St	striatum
VAM	vocal nucleus of the anterior mesopallium	Uva	nucleus uvaeformis
VAS	vocal nucleus of the anterior striatum	VA/VL	ventral anterior/ventral lateral nuclei of the mammalian thalamus.
VAN	vocal nucleus of the anterior nidopallium	VLN	vocal nucleus of the lateral nidopallium