

 Open access • Journal Article • DOI:10.1136/ANNRHEUMDIS-2011-200372

Leptin produced by joint white adipose tissue induces cartilage degradation via upregulation and activation of matrix metalloproteinases — [Source link](#)

Wang Hui, Gary J. Litherland, M Elias, Gareth I Kitson ...+3 more authors

Institutions: Newcastle University

Published on: 01 Mar 2012 - Annals of the Rheumatic Diseases (Newcastle University)

Topics: Cartilage metabolism, Bovine Cartilage, Adipokine, Cartilage and Leptin

Related papers:

- [Evidence for a key role of leptin in osteoarthritis.](#)
- [The infrapatellar fat pad of patients with osteoarthritis has an inflammatory phenotype](#)
- [The infrapatellar fat pad in knee osteoarthritis: an important source of interleukin-6 and its soluble receptor.](#)
- [Differential distribution of adipokines between serum and synovial fluid in patients with osteoarthritis. Contribution of joint tissues to their articular production.](#)
- [The infrapatellar fat pad should be considered as an active osteoarthritic joint tissue: a narrative review](#)

Share this paper:    

View more about this paper here: <https://typeset.io/papers/leptin-produced-by-joint-white-adipose-tissue-induces-z3dpmb7kox>

Newcastle University e-prints

Date deposited: 22nd May 2012 [made available 30th September 2012]

Version of file: Author final

Peer Review Status: Peer reviewed

Citation for item:

Hui W, Litherland GJ, Elias MS, Kitson GI, Cawston TE, Rowan AD, Young DA. [Leptin produced by joint white adipose tissue induces cartilage degradation via upregulation and activation of matrix metalloproteinases](#). *Annals of the Rheumatic Diseases* 2012, **71**(3), 455-462.

Further information on publisher website:

<http://ard.bmj.com>

Publisher's copyright statement:

This article has been accepted for publication in *Annals of the Rheumatic Diseases*. The definitive copyedited, typeset version:

Hui W, Litherland GJ, Elias MS, Kitson GI, Cawston TE, Rowan AD, Young DA. [Leptin produced by joint white adipose tissue induces cartilage degradation via upregulation and activation of matrix metalloproteinases](#). *Annals of the Rheumatic Diseases* 2012, **71**(3), 455-462

is available online at:

<http://dx.doi.org/10.1136/annrheumdis-2011-200372>

Always use the definitive version when citing.

Use Policy:

The full-text may be used and/or reproduced and given to third parties in any format or medium, without prior permission or charge, for personal research or study, educational, or not for profit purposes provided that:

- A full bibliographic reference is made to the original source
- A link is made to the metadata record in Newcastle E-prints
- The full text is not changed in any way.

The full-text must not be sold in any format or medium without the formal permission of the copyright holders.

**Robinson Library, University of Newcastle upon Tyne, Newcastle upon Tyne.
NE1 7RU. Tel. 0191 222 6000**

Leptin produced by joint white adipose tissue induces cartilage degradation via up-regulation and activation of matrix metalloproteinases

Journal:	<i>Annals of the Rheumatic Diseases</i>
Manuscript ID:	annrheumdis-2011-200372.R1
Article Type:	Extended report
Date Submitted by the Author:	n/a
Complete List of Authors:	Hui, Wang; Newcastle University, Musculoskeletal Research Group Litherland, Gary; Newcastle University, Musculoskeletal Research Group Elias, Martina; Newcastle University, Dermatology Kitson, Gareth; Newcastle University, Musculoskeletal Research Group Cawston, Tim; Newcastle University, Musculoskeletal Research Group Rowan, Andrew; Newcastle University, Musculoskeletal Research Group Young, David; Newcastle University, Musculoskeletal Research Group
Keywords:	Chondrocytes, Osteoarthritis, Cytokines

SCHOLARONE™
 Manuscripts

1
2
3 **Leptin produced by joint white adipose tissue induces cartilage degradation via up-**
4 **regulation and activation of matrix metalloproteinases**
5
6
7
8

9 **Wang Hui, Gary J. Litherland, Martina Elias, Gareth I. Kitson, Tim E. Cawston,**
10 **Andrew D. Rowan and David A. Young**
11

12 Musculoskeletal Research Group, Institute of Cellular Medicine, Medical School,
13 Newcastle University, Newcastle-upon-Tyne, NE2 4HH, UK
14
15

16
17
18
19
20
21
22 *Address correspondence to: David A. Young, PhD; Musculoskeletal Research Group,
23 Institute of Cellular Medicine, 4th Floor Cookson Building, Medical School, Newcastle
24 University, Newcastle upon Tyne, NE2 4HH, UK Tel +44 191 2223850, Fax +44 191
25 2225455; E-mail: d.a.young@ncl.ac.uk
26
27
28
29
30
31
32
33
34
35
36
37
38
39
40
41
42
43
44
45
46
47
48
49
50
51
52
53
54
55
56
57
58
59
60

1
2
3
4 **Objectives:** To investigate the effect of leptin on cartilage destruction.

5 **Methods:** Collagen release was assessed in bovine cartilage explant cultures, while
6 collagenolytic and gelatinolytic activities in culture supernatants were determined by
7 bioassay and gelatin zymography, respectively. The expression of matrix
8 metalloproteinases (MMPs) was analysed by real-time RT-PCR. Signalling pathway
9 activation was studied by immunoblotting. Leptin levels in cultured osteoarthritic
10 joint infrapatellar fat pad or peri-enthesal deposit supernatants were measured by
11 an immunoassay.
12
13
14
15
16
17

18 **Results:** Leptin, either alone or in synergy with IL-1, significantly induced collagen
19 release from bovine cartilage by upregulation of collagenolytic and gelatinolytic
20 activity. In chondrocytes, leptin induced *MMP1* and *MMP13* expression with a
21 concomitant activation of STATs -1, -3, -5, MAPKs (JNK, Erk, p38), Akt and NF-κB
22 signalling pathways. Selective inhibitor blockade of PI3K, p38, Erk and Akt pathways
23 significantly reduced *MMP1* and *MMP13* expression in chondrocytes, and reduced
24 cartilage-collagen release induced by leptin or leptin+IL-1. Interestingly, JNK
25 inhibition had no effect on leptin-induced *MMP13* expression or leptin+IL-1-induced
26 cartilage-collagen release. Conditioned media from cultured white adipose tissue
27 (WAT) from OA knee joint fat pads, contained leptin, induced cartilage-collagen
28 release and increased *MMP1* and *MMP13* expression in chondrocytes; the latter
29 being partially blocked with an anti-leptin antibody.
30
31
32
33
34
35
36
37
38
39
40

41 **Conclusions:** This study demonstrates that leptin acts as a pro-inflammatory
42 adipokine with a catabolic role on cartilage metabolism via the up-regulation of
43 proteolytic enzymes and acts synergistically with other pro-inflammatory stimuli.
44 Our data suggest that the infrapatellar fat pad, and other WAT, in arthritic joints is a
45 local producer of leptin which may contribute to the inflammatory and degenerative
46 processes in cartilage catabolism, providing a mechanistic link between obesity and
47 OA.
48
49
50
51
52
53

54 **Keywords**

55
56
57
58 Leptin, osteoarthritis, cartilage, metalloproteinase
59
60

INTRODUCTION

Osteoarthritis (OA) is a complex disease with genetic, mechanical and environmental components leading to a number of changes within the joint but typified by the irreversible destruction of articular cartilage.(1) Articular cartilage is composed predominantly of an extracellular matrix (ECM) containing proteoglycan (aggrecan) and collagen (mainly type II collagen). Within this ECM chondrocytes control the turnover and remodelling of the cartilage matrix, through regulation of the expression of matrix components and matrix-degrading enzymes.(2) Type II collagen is cleaved by matrix metalloproteinases (MMPs), including MMP-1, -8, -13 and -14 whilst aggrecan is cleaved by 'A disintegrin and metalloproteinase with thrombospondin motifs' (ADAMTS) enzymes, most probably ADAMTS-5.(3) Together, these proteases release specific type II collagen or aggrecan fragments that can be measured *in vitro* and *in vivo*.(4) Whilst loss of aggrecan from cartilage is reversible, collagen breakdown is not and therefore represents an irreversible step in cartilage degradation.(5, 6)

A variety of cytokines and growth factors, such as the pro-inflammatory cytokines tumour necrosis factor α (TNF α) and interleukin-1 (IL-1) can induce the expression of many of the metalloproteinases described. Further, when in combination with oncostatin-M (OSM), an IL-6-family cytokine, these pro-inflammatory cytokines can synergistically enhance the production of catabolic MMPs.(7-9) These cytokines are key mediators of inflammation in rheumatoid arthritis but are increasingly being recognised as important in OA pathogenesis.(10)

One of the most significant risk factors for OA development is obesity (11, 12). The effects of obesity on OA can only partly be explained by an increase in biomechanical loading, since body mass index (BMI), or more specifically adiposity, is also a risk factor for OA in non-weight bearing joints, such as hands.(11, 13) These data suggest that an adipose-derived inflammatory factor acts as an obesity-related risk factor for OA. Adipose tissue secretes numerous cytokines and growth factors as well as the adipose-derived hormones, the adipokines (including adiponectin, resistin, visfatin and leptin)(14) to which chondrocytes are known to respond and in some cases produce. For example, adiponectin induces IL-8 expression by chondrocytes(15), OA chondrocytes are also responsive to both visfatin, which stimulates the expression of

1
2
3
4
5
6
7
8
9
10
11
12
13
14
15
16
17
18
19
20
21
22
23
24
25
26
27
28
29
30
31
32
33
34
35
36
37
38
39
40
41
42
43
44
45
46
47
48
49
50
51
52
53
54
55
56
57
58
59
60

ADAMTS4, *ADAMTS5*, *MMP3* and *MMP13* and induces prostaglandin E2 release, and resistin, that induces *MMP1*, *MMP13*, and *ADAMTS4*, both of which can thus be considered catabolic.(16, 17)

The best characterised role of leptin is to act as a signal for the central nervous system to inhibit food intake and to stimulate energy expenditure(18), however it also has a role in various physiological processes such as lipid metabolism, haematopoiesis, immune function, angiogenesis, reproduction, bone formation and inflammation.(19-25) It is mainly secreted by adipocytes and the levels of leptin within the circulation correlate with the amount of white adipose tissue (WAT).(18) Articular cartilage produces leptin(26, 27) and expresses the functional leptin receptor Ob-R;(28) the expression of these two proteins is further increased in advanced OA and correlates with the BMI of OA patients.(29) Leptin has also been shown to have a pro-inflammatory effect on chondrocytes by inducing nitric oxide synthase.(30, 31)

The aim of the present study was to investigate the effects of leptin alone or in combination with pro-inflammatory cytokines on cartilage metabolism by measuring its effects on the release of cartilage collagen, expression and production of collagenases and gelatinases, and by evaluating the mechanisms involved in these effects. Importantly, we show that infrapatellar fat pad, and other WAT, produce significant amounts of leptin, which can contribute to the pro-inflammatory milieu of the joint, the induction of collagenase gene expression by chondrocytes, and potentially cartilage catabolism, providing a biological link between obesity and OA.

MATERIALS AND METHODS

IL-1 α was a generous gift from Dr. K. Ray (Glaxo-SmithKline, Stevenage, UK), and recombinant human OSM prepared in-house using expression vectors kindly provided by Prof. J. Heath (University of Birmingham, UK) and methods described.(32) TNF α , recombinant human leptin and adiponectin, anti-human leptin monoclonal antibody and human leptin ELISA kit were from R&D Systems (Abingdon, UK). Resistin and visfatin were from First Link (UK) Ltd (Birmingham, UK). The mouse IgG control was from Becton-Dickinson (UK). Primary antibodies against phospho-Erk1/2 (phospho-p44/42) (#9101), phospho-p38 (#9211), phospho-JNK1/2 (#9251), phospho-p65 (Ser 536; #3031) and phospho-STATs were all from Cell Signaling Technology (New England Biolabs, Hitchin, UK). The phospho-Akt antibodies used have previously been described.(33) A rabbit anti- β Tubulin antibody (ab6046) was from Abcam (Cambridge, UK). Secondary immunoglobulins/HRP were from Cytomation (Dako, Glostrup, Denmark). Chemical pathway inhibitors LY294002, U0126, SB203580, SP600125 and Akt inhibitors IV and VIII were from Merck Chemicals (Nottingham, UK). Tissue culture reagents were obtained from Lifetechnologies (Paisley, UK).

Cartilage degradation and enzyme activity assay

Bovine nasal cartilage has been previously validated as a model relevant to human disease(34) and was cultured as previously described.(7) Briefly, three discs (~2 mm³ discs) of bovine nasal cartilage/well were incubated \pm test reagents in serum-free DMEM medium for 14 days, with a medium change at day 7. Selective pathway inhibitors were added 30 min prior to test reagents at the concentrations indicated. Day 7 and day 14 supernatants were stored at -20°C. Cartilage collagen degradation was measured using a hydroxyproline assay (7) and collagenase activities in culture supernatants were determined by the ³H-acetylated collagen diffuse fibril assay (35). Aminophenylmercuric acetate (0.67mM) was used to activate pro-collagenases. Gelatin zymography was used to measure gelatinase activity in the culture supernatants.(36)

Chondrocyte isolation and culture

1
2
3 Primary human articular chondrocytes (HACs) were derived from articular cartilage
4 obtained from joint replacement patients diagnosed with OA. Normal cartilage was
5 obtained from neck of femur fracture (NOF) patients (no history of OA) undergoing
6 joint replacement surgery. All tissue was obtained with informed consent and Ethical
7 Committee approval from the Newcastle and North Tyneside Health Authority.
8 Enzymatic digestion of tissue and maintenance and culture of cells were as
9 previously described.(9) When cells reached 80-90% confluence without passage
10 they were serum-starved for 16 hours before pre-treatment with selective pathway
11 inhibitors (for 30 min at the indicated concentrations) prior to the addition of leptin,
12 cytokines or WAT conditioned media at the concentrations and duration indicated as
13 previously described.(37) Bovine nasal chondrocytes were isolated and cultured as
14 previously described.(7, 9)
15
16
17
18
19
20
21
22
23
24
25
26
27

28 **RNA extraction and real-time reverse transcription polymerase chain reaction (RT- 29 PCR)**

30
31 Total RNA was isolated from cultured HACs or bovine chondrocytes and reverse
32 transcribed using the Ambion Cells-to-cDNA II Kit (Lifetechnologies).
33 Oligonucleotides were purchased from Sigma-Genosys (Poole, UK) and were as
34 previously described.(36, 38) Relative quantification of genes was performed using
35 the ABI Prism 7900HT sequence detection system (Lifetechnologies). Bovine
36 metalloproteinase expression profiles were determined using SYBR Green (Takara,
37 Cambrex, Wokingham, UK) in accordance with the manufacturer's protocol and as
38 described.(38) Throughout, the *18s* rRNA gene was used as an endogenous house-
39 keeping control. TaqMan® Probe based assays were performed using TaqMan® Gene
40 Expression mastermix (Lifetechnologies) according to the manufacturer's protocol as
41 previously reported.(36) Adipokine receptor expression in NOF and OA hip cartilage
42 patient samples was determined as part of a TaqMan® low-density array screen
43 using assays ADIPOR1-Hs00360422_m1, ADIPOR2-Hs00226105_m1, ADIPOQ-
44 Hs00605917_m1, LEPR-Hs00174497_m1 and LEP-Hs00174877_m1 (Lifetechnologies),
45 again normalised to the housekeeping gene *18s* rRNA.
46
47
48
49
50
51
52
53
54
55
56
57
58
59
60

Immunoblotting

1
2
3
4
5
6
7
8
9
10
11
12
13
14
15
16
17
18
19
20
21
22
23
24
25
26
27
28
29
30
31
32
33
34
35
36
37
38
39
40
41
42
43
44
45
46
47
48
49
50
51
52
53
54
55
56
57
58
59
60

Cells were lysed after the indicated time-points with ice-cold buffer (50mM Tris-HCl, pH 7.5; 1.2M glycerol; 1mM EGTA; 1mM EDTA; 1mM Na₃VO₄; 10mM β-glycerophosphate; 50mM NaF; 5mM sodium pyrophosphate; 1% (v/v) Triton X-100; 1μM microcystin-LR; 0.1% (v/v) β-mercaptoethanol; Roche protease inhibitor complex (Roche, UK)), particulate matter removed by centrifugation at 13,000g, 5min at 4°C, and lysates stored at -80°C until required. Lysates were resolved by SDS-PAGE, transferred to PVDF membranes (Millipore, Watford, UK) and subsequently probed using the antibodies described. The optimum time-points for signalling pathway activation were based upon our previous work with HAC. (33, 36, 37, 39)

White adipose tissue (WAT)-conditioned media

The infrapatellar fat pad or peri-enthesal deposits from human OA knee joints were the source of WAT. This was separated from the rest of the joint and any fibrous material, such as connective tissue or blood vessels, prior to dissection into small pieces of approximately 50mg. The tissue was then washed twice with phosphate buffered saline and once with serum-free DMEM. After washing, the WAT was incubated for 24hours at 37°C in DMEM culture medium containing 5% foetal calf serum (FCS) and antibiotics (streptomycin (100μg/ml) and penicillin (100IU/ml)), which was replaced with serum-free DMEM (1ml/0.3g WAT) and incubated for 72hours at 37°C. After harvesting, the media were filter sterilised and stored at -80°C prior to use. To quantify the amount of leptin present in the WAT-conditioned media, the Human Leptin Quantikine ELISA Kit (R&D Systems, UK) was performed according to manufacturers' instructions.

Statistical analysis

For cartilage degradation assays and collagenase bioassays one-way analysis of variance (ANOVA) with Bonferroni post-hoc statistical tests were performed. Statistical differences between sample groups in the real-time RT-PCR experiments were assessed using the two-tailed Student's *t*-test. SPSS 15.0 software was used for all statistical analyses. Significance levels were indicated as * $p < 0.05$, ** $p < 0.01$, and *** $p < 0.001$.

RESULTS

Leptin induces collagenase gene expression and cartilage resorption

To study the effects of leptin on cartilage catabolism, bovine cartilage was stimulated with leptin in the absence or presence of several pro-inflammatory cytokines; IL-1, TNF α or OSM. Leptin alone induced low but significant ($p < 0.05$) collagen release (approximately 5%) compared to control (Fig. 1A). IL-1 or TNF α alone induced ~30% collagen release but when combined with leptin this synergistically increased to >60% (Fig. 1A). This increase in collagen release was accompanied by an up-regulation of total and active collagenolytic and gelatinolytic (MMP-2 and MMP-9) activities (Fig. 1B and 1C), demonstrating a role of leptin in the activation of a number of proMMPs. OSM alone or in combination with leptin did not effect cartilage resorption.

Our previous work has focussed on synergy between various inflammatory mediators, especially with IL-1, and the potent regulation of the collagenases.(7-9, 33, 36, 40) We therefore assessed the synergy between leptin and IL-1. A concentration-dependent increase in cartilage-collagen degradation was observed with leptin concentrations exceeding 10 μ g/ml although when in combination with IL-1 (0.25ng/ml) even the lowest concentration of leptin tested (1 μ g/ml) elicited a synergistic increase in cartilage collagen release (Fig. 1D). We also investigated whether other adipokines (visfatin, resistin and adiponectin) could induce or potentiate cartilage resorption but, surprisingly only leptin showed such efficacy (Sup. Fig. 1A) despite previous literature demonstrating their ability to induce a catabolic phenotype in chondrocytes(15-17) and significant expression by chondrocytes of adiponectin receptors (Sup. Fig. 2).

When added to primary HAC, leptin induced the gene expression of the major collagenases *MMP1* and *MMP13*. Again, when in combination with IL-1 (0.25ng/ml) higher concentrations of leptin (>1 μ g/ml) synergistically induced these collagenases. (Fig. 1E and 1F). A similar induction of *MMP1* and *MMP13* by leptin and leptin + IL-1 was also observed in isolated bovine chondrocytes (Sup. Fig 1B and C), emphasising the suitability of the bovine cartilage model.

Leptin activates STAT, MAPK and Akt signalling in primary HAC

Stimulation of primary HAC with leptin ± IL-1 activated multiple signalling pathways. Leptin alone induced STAT1, -3 and -5 tyrosine phosphorylation (at positions Y701, Y705 and Y694, respectively) but failed to induce robust STAT serine phosphorylation with the exception of a modest increase in STAT3 S727 phosphorylation. This was in contrast to IL-1 which only induced STAT serine phosphorylation. Some synergy between leptin and IL-1 occurred with the phosphorylation of STAT1 and STAT3 at S727. These activation events declined by 60 min post-stimulation (Fig. 2A). Leptin alone activated all three mitogen-activated protein kinase (MAPK) pathways, evidenced by phosphorylation of the stress-activated protein kinase/cJun-amino-terminal kinase JNK (T183/Y185), Erk (T202/Y204 of Erk1) and p38 (T180/Y182). When combined with IL-1, an increase in phosphorylated p38 and JNK1/2 were detected (Fig. 2B), the latter only becoming obvious by 60 min. Leptin also led to the phosphorylation of Akt (at S473 and Y308) although no additional phosphorylation was observed when combined with IL-1 (Fig. 2C). Finally, leptin led to a modest phosphorylation of the NF-κB subunit p65 at 20 min but, as with the serine phosphorylation of STAT-1/3, this was not as pronounced as that elicited by IL-1 alone (Fig. 2C).

Different signalling pathways control leptin-induced collagenase expression and cartilage-collagen release

Next, to test whether leptin regulated the expression of *MMP1* and *MMP13* via the identified signalling pathways, HAC were cultured in the presence of selective pathway inhibitors. All the inhibitors, with the exception of Akt VIII, significantly suppressed leptin-induced expression of *MMP1*, while only the JNK inhibitor, SP600125, failed to inhibit leptin-induced *MMP13* (Fig. 2D and E).

In the bovine cartilage resorption assay all the inhibitors significantly reduced the modest collagen release elicited by leptin (Fig. 3A). When the combination of IL-1 and leptin was used as the stimulus, only the JNK and Akt VIII inhibitors were ineffective at blocking resorption (Fig. 3B). This inhibitor profile was reminiscent to that seen for the *MMP13* gene expression experiment (compare Fig. 2E and 3B).

WAT-conditioned culture media induce MMPs and cartilage resorption

In order to assess whether WAT-derived leptin WAT might have an impact on cartilage degradation we initially confirmed that WAT-, not control, -conditioned media were able to induce *MMP1* and *MMP13* by primary bovine chondrocytes (Sup. Fig. 3A). Next, WAT-conditioned culture media (using fat pads from 4 different OA patients) were incubated with bovine nasal cartilage \pm IL-1. Alone, the WAT-conditioned media induced modest, but significant, collagen release compared with control-conditioned medium (Fig. 3C) and when combined with IL-1, a further synergistic release of proteoglycan (not shown) and collagen was observed (Fig. 3D).

Leptin in WAT-conditioned media contributes to the induction of *MMP1* and *MMP13* expression

Next, HAC were cultured with WAT-conditioned media taken from fat pads of 14 OA patients. Ten WAT-media samples significantly up-regulated *MMP13*, while the same ten samples, plus N1688, also significantly up-regulated *MMP1* expression. The levels of induction of *MMP1* and *MMP13* obtained were comparable to that induced by leptin (25 μ g/ml) alone (Fig. 4A). To determine if the induction of the collagenases induced by the WAT-media was in part mediated by secreted leptin we first quantified the amount of leptin present in the WAT-conditioned media using a specific leptin immunoassay (Fig. 4B). After the removal of outliers, 12 WAT-conditioned media contained a wide-range of leptin levels from 99 to 1777pg/ml (Fig. 4B). Using regression analysis, the amount of leptin showed a trend towards a positive correlation with the *MMP1* and *MMP13* fold-induction by these media ($R^2 = 0.1798$ and 0.4897 , respectively) which approached but importantly did not reach significance, suggestive of a role for leptin in combination with other WAT-produced pro-inflammatory factors in collagenase induction. To attempt to conclusively test if the leptin produced by the WAT was involved in the up-regulation of the collagenases induced by the conditioned media, HAC were incubated with WAT-conditioned media \pm an anti-leptin antibody. When analysing the WAT-conditioned media that induced each collagenase >5 fold, the leptin blocking antibody led to a significant reduction in the induced collagenase levels (Fig. 4C and D). Finally, a

1
2
3 similar experiment was repeated where HAC were again incubated with WAT-
4 conditioned media \pm an anti-leptin or control (IgG) antibody. As expected, the anti-
5 leptin but not the control antibody significantly reduced the level of induction of
6
7 both collagenases by leptin, and moreover did so in 4/5 WAT-conditioned media
8
9 examined (Sup. Fig. 3B and C).
10
11
12
13
14
15
16
17
18
19
20
21
22
23
24
25
26
27
28
29
30
31
32
33
34
35
36
37
38
39
40
41
42
43
44
45
46
47
48
49
50
51
52
53
54
55
56
57
58
59
60

Confidential: For Review Only

DISCUSSION

Several studies have linked leptin, obesity and OA.(27, 41-47) For example, serum leptin concentrations not only correlate with BMI but are also closely related to the radiographic severity, joint inflammation and disease severity of OA. Others have reported a marked increase in leptin protein expression in OA cartilage compared to normal cartilage.(26) However, the most compelling evidence that leptin plays a direct, rather than correlative, role in OA pathogenesis comes from studies using leptin-signalling deficient mice. These mice are severely obese yet exhibited the same (increased) level of OA incidence as that of obese wild-type mice.(48)

In the current study, we demonstrated for the first time that leptin, but surprisingly not the other adipokines visfatin, resistin or adiponectin, can directly induce cartilage collagen degradation, alone and when combined with pro-inflammatory cytokines (IL-1 or TNF α). Adiponectin has previously been shown to induce the expression of IL-8 by chondrocytes (15) but also to have a chondroprotective role.(49)

We found little response to this adipokine in our assays even though one of its receptors (ADIPOR2) was highly, and moreover, differentially expressed in diseased cartilage. We also found bovine cartilage to be unresponsive to both resistin and visfatin (sup. Fig. 1), both of which have previously been reported to induce a number of metalloproteinases when added to chondrocytes.(16, 17) These discrepancies could be due to a number of factors, including tissue examined (cartilage vs. cells), species, source of adipokine and culture conditions. The effects of leptin upon cartilage collagen release were accompanied with an up-regulation of collagenase and gelatinase activities in the culture medium. A recent study has similarly shown an induction of the collagenases from human OA cartilage following leptin or leptin + IL-1 stimulation.(50) The same group also showed that leptin alone or in combination with IL-1 enhanced the expression of the pro-inflammatory mediators iNOS and COX-2, and production of NO, PGE₂, IL-6 and IL-8.(43)

Leptin signalling through leptin receptors (Ob-R/LEPR) is mediated via the JAK/STAT (janus kinase/signal transducers and activators of transcription) pathway, but additionally the phosphatidylinositol 3-kinase (PI3K)/Akt, MAPK and NF- κ B pathways, all of which have been reported to be important in leptin signalling by chondrocytes (30, 43), in accordance with the data presented here. Interestingly, our data show

1
2
3 that leptin alone is a better inducer of STAT phosphorylation at the tyrosine position
4 rather than serine, the latter only becoming prominent when leptin acts
5 synergistically with IL-1. This is consistent with the role of the tyrosine kinase family
6 JAKs, probably JAK2, in Ob-R (LEPR) signalling.(51) We also showed for the first time
7 that the MAPK and PI3K pathways are important mediators of leptin signalling in
8 chondrocytes and cartilage since chemical blockade of any of the these pathways
9 prevented cartilage collagen release. Interestingly, the JNK inhibitor, SP600125, did
10 not inhibit either leptin+IL-1-induced cartilage-collagen release or leptin-induced
11 *MMP13* by chondrocytes but did block *MMP1* levels, supporting the dogma that
12 *MMP-13* is the major type-II collagen degrading enzyme(52) and validating the
13 bovine cartilage model.
14

15
16 Gradual loss of articular cartilage is a major characteristic of OA, with initial changes
17 including the loss of proteoglycan. With this in mind, the *in vivo* injection of leptin
18 into the joints of rats induces cartilage proteoglycan loss and increases the
19 expression of *MMP-2* and *-9* in articular cartilage.(46) The destructive process in OA
20 is determined by an imbalance between anabolic and catabolic mediators (and their
21 regulators), in the joint, and the local distribution of these mediators in the
22 cartilage.(10, 52) Leptin appears to be an important local and systemic factor
23 influencing cartilage/bone homeostasis. It is likely that locally produced, rather than
24 circulatory, leptin may be more important in regulating cartilage homeostasis since
25 the concentration of leptin in synovial fluid is higher than in the corresponding sera
26 of OA patients (29), and these levels are associated with disease activity.(26, 53)
27 Moreover, expression of leptin and LEPR have previously been detected in human
28 cartilage with levels significantly increased in end-stage OA cartilage.(26, 41) The
29 endogenous leptin produced by chondrocytes has also been shown to induce
30 *MMP13* expression.(54) However, although we could detect leptin and LEPR
31 expression in cartilage, neither were differentially expressed in OA in our
32 experiments and the level of leptin expression detected was deemed negligible (Sup.
33 Fig. 2). Therefore, we focussed on leptin production by the infrapatellar fat pad, a
34 joint tissue reported to be a site of leptin production.(41) For the first time to our
35 knowledge we have shown that WAT-conditioned media, collected from cultured
36 infrapatellar fat pad and other WAT of OA knee joints, contains significant quantities
37
38
39
40
41
42
43
44
45
46
47
48
49
50
51
52
53
54
55
56
57
58
59
60

1
2
3 of leptin, the amount of which correlated with the ability of the WAT-conditioned
4 media to stimulate *MMP1* and *MMP13* expression in chondrocytes. These WAT-
5 conditioned media were also able to induce collagen release from cartilage cultures.
6
7 Furthermore, the ability of these WAT-conditioned media to stimulate *MMP1* and
8 *MMP13* expression was partially abolished by an anti-leptin antibody. Together,
9 these data suggest that leptin produced by the WAT-conditioned media was in part
10 responsible for the cartilage degradation observed, but importantly that these media
11 contain other pro-inflammatory cytokines, such as IL-1, whose expression by WAT-
12 tissue we could detect (data not shown), that synergise with leptin to induce
13 collagenase expression.
14
15

16
17 Taken together our findings suggests that the infrapatellar fat pad of arthritic joints
18 can be a significant local producer of leptin and may contribute to inflammatory and
19 degenerative processes in OA cartilage catabolism via the up-regulation of the
20 collagenolytic metalloproteinases MMP-1 and MMP-13, thus providing a direct
21 mechanistic link between obesity and OA.
22
23

24 25 26 27 28 29 30 31 32 33 **AUTHOR CONTRIBUTIONS**

34 GJL, TEC, ADR and DAY were responsible for the conception and design of the study
35 and analysis and interpretation of the data. WH, ME, GJL and GIK collected and
36 assembled the data. WH, GJL, ADR and DAY were responsible for drafting of the
37 article. ADR, TEC and DAY obtained funding for the study. All authors approved the
38 final article.
39
40
41
42
43
44

45 46 47 **ACKNOWLEDGMENTS AND AFFILIATIONS:**

48 Supported by the Action Medical Research, Arthritis Research UK grants 18726 and
49 19485, the JGWP Foundation, the Newcastle University Hospitals Special Trustees,
50 UK and the UK NIHR Biomedical Research Centre for Ageing and Age Related Disease
51 Award to the Newcastle upon Tyne Hospitals NHS Foundation Trust. Clinical and
52 translational research in the Musculoskeletal Research Group is supported by the
53 Northumberland, Tyne and Wear Comprehensive Local Research Network.
54
55
56
57
58
59
60

REFERENCES:

1. Goldring SR, Goldring MB. Clinical aspects, pathology and pathophysiology of osteoarthritis. *J Musculoskelet Neuronal Interact.* 2006;6(4):376-8.
2. Muir H. The chondrocyte, architect of cartilage. Biomechanics, structure, function and molecular biology of cartilage matrix macromolecules. *Bioessays.* 1995;17(12):1039-48.
3. Glasson SS, Askew R, Sheppard B, Carito B, Blanchet T, Ma HL, et al. Deletion of active ADAMTS5 prevents cartilage degradation in a murine model of osteoarthritis. *Nature.* 2005;434(7033):644-8.
4. Schaller S, Henriksen K, Hoegh-Andersen P, Sondergaard BC, Sumer EU, Tanko LB, et al. In vitro, ex vivo, and in vivo methodological approaches for studying therapeutic targets of osteoporosis and degenerative joint diseases: how biomarkers can assist? *Assay and drug development technologies.* 2005;3(5):553-80.
5. Jubb RW, Fell HB. The breakdown of collagen by chondrocytes. *The Journal of pathology.* 1980;130(3):159-67.
6. Karsdal MA, Madsen SH, Christiansen C, Henriksen K, Fosang AJ, Sondergaard BC. Cartilage degradation is fully reversible in the presence of aggrecanase but not matrix metalloproteinase activity. *Arthritis research & therapy.* 2008;10(3):R63.
7. Hui W, Rowan AD, Richards CD, Cawston TE. Oncostatin M in combination with tumor necrosis factor alpha induces cartilage damage and matrix metalloproteinase expression in vitro and in vivo. *Arthritis Rheum.* 2003;48(12):3404-18.
8. Rowan AD, Hui W, Cawston TE, Richards CD. Adenoviral gene transfer of interleukin-1 in combination with oncostatin M induces significant joint damage in a murine model. *The American journal of pathology.* 2003;162(6):1975-84.
9. Rowan AD, Koshy PJ, Shingleton WD, Degnan BA, Heath JK, Vernallis AB, et al. Synergistic effects of glycoprotein 130 binding cytokines in combination with interleukin-1 on cartilage collagen breakdown. *Arthritis Rheum.* 2001;44(7):1620-32.
10. Goldring SR, Goldring MB. The role of cytokines in cartilage matrix degeneration in osteoarthritis. *Clin Orthop Relat Res.* 2004(427 Suppl):S27-36.
11. Grotle M, Hagen KB, Natvig B, Dahl FA, Kvien TK. Obesity and osteoarthritis in knee, hip and/or hand: an epidemiological study in the general population with 10 years follow-up. *BMC musculoskeletal disorders.* 2008;9:132.
12. Cicuttini FM, Baker JR, Spector TD. The association of obesity with osteoarthritis of the hand and knee in women: a twin study. *The Journal of rheumatology.* 1996;23(7):1221-6.

13. Teichtahl AJ, Wluka AE, Wang Y, Hanna F, English DR, Giles GG, et al. Obesity and adiposity are associated with the rate of patella cartilage volume loss over 2 years in adults without knee osteoarthritis. *Annals of the rheumatic diseases*. 2009;68(6):909-13.
14. Hu PF, Bao JP, Wu LD. The emerging role of adipokines in osteoarthritis: a narrative review. *Molecular biology reports*.
15. Gomez R, Scotece M, Conde J, Gomez-Reino JJ, Lago F, Gualillo O. Adiponectin and leptin increase IL-8 production in human chondrocytes. *Annals of the rheumatic diseases*. 2011.
16. Gosset M, Berenbaum F, Salvat C, Sautet A, Pigenet A, Tahiri K, et al. Crucial role of visfatin/pre-B cell colony-enhancing factor in matrix degradation and prostaglandin E2 synthesis in chondrocytes: possible influence on osteoarthritis. *Arthritis and rheumatism*. 2008;58(5):1399-409. Epub 2008/04/29.
17. Zhang Z, Xing X, Hensley G, Chang LW, Liao W, Abu-Amer Y, et al. Resistin induces expression of proinflammatory cytokines and chemokines in human articular chondrocytes via transcription and messenger RNA stabilization. *Arthritis and rheumatism*. 2010;62(7):1993-2003. Epub 2010/05/28.
18. Zhang Y, Proenca R, Maffei M, Barone M, Leopold L, Friedman JM. Positional cloning of the mouse obese gene and its human homologue. *Nature*. 1994;372(6505):425-32.
19. Gainsford T, Willson TA, Metcalf D, Handman E, McFarlane C, Ng A, et al. Leptin can induce proliferation, differentiation, and functional activation of hemopoietic cells. *Proceedings of the National Academy of Sciences of the United States of America*. 1996;93(25):14564-8.
20. Sierra-Honigmann MR, Nath AK, Murakami C, Garcia-Cardena G, Papapetropoulos A, Sessa WC, et al. Biological action of leptin as an angiogenic factor. *Science (New York, NY)*. 1998;281(5383):1683-6.
21. Collins S, Kuhn CM, Petro AE, Swick AG, Chrnyk BA, Surwit RS. Role of leptin in fat regulation. *Nature*. 1996;380(6576):677.
22. Huang L, Li C. Leptin: a multifunctional hormone. *Cell research*. 2000;10(2):81-92.
23. Gualillo O, Eiras S, Lago F, Dieguez C, Casanueva FF. Elevated serum leptin concentrations induced by experimental acute inflammation. *Life sciences*. 2000;67(20):2433-41.
24. Gordeladze JO, Drevon CA, Syversen U, Reseland JE. Leptin stimulates human osteoblastic cell proliferation, de novo collagen synthesis, and mineralization: Impact on differentiation markers, apoptosis, and osteoclastic signaling. *Journal of cellular biochemistry*. 2002;85(4):825-36.

- 1
2
3
4
5
6
7
8
9
10
11
12
13
14
15
16
17
18
19
20
21
22
23
24
25
26
27
28
29
30
31
32
33
34
35
36
37
38
39
40
41
42
43
44
45
46
47
48
49
50
51
52
53
54
55
56
57
58
59
60
25. Lord GM, Matarese G, Howard JK, Lechler RI. The bioenergetics of the immune system. *Science (New York, NY)*. 2001;292(5518):855-6.
26. Dumond H, Presle N, Terlain B, Mainard D, Loeuille D, Netter P, et al. Evidence for a key role of leptin in osteoarthritis. *Arthritis and rheumatism*. 2003;48(11):3118-29.
27. Presle N, Pottie P, Dumond H, Guillaume C, Lopicque F, Pallu S, et al. Differential distribution of adipokines between serum and synovial fluid in patients with osteoarthritis. Contribution of joint tissues to their articular production. *Osteoarthritis and cartilage / OARS, Osteoarthritis Research Society*. 2006;14(7):690-5.
28. Figenschau Y, Knutsen G, Shahazeydi S, Johansen O, Sveinbjornsson B. Human articular chondrocytes express functional leptin receptors. *Biochemical and biophysical research communications*. 2001;287(1):190-7.
29. Simopoulou T, Malizos KN, Iliopoulos D, Stefanou N, Papatheodorou L, Ioannou M, et al. Differential expression of leptin and leptin's receptor isoform (Ob-Rb) mRNA between advanced and minimally affected osteoarthritic cartilage; effect on cartilage metabolism. *Osteoarthritis and cartilage / OARS, Osteoarthritis Research Society*. 2007;15(8):872-83.
30. Otero M, Lago R, Gomez R, Lago F, Gomez-Reino JJ, Gualillo O. Phosphatidylinositol 3-kinase, MEK-1 and p38 mediate leptin/interferon-gamma synergistic NOS type II induction in chondrocytes. *Life sciences*. 2007;81(19-20):1452-60.
31. Otero M, Lago R, Lago F, Reino JJ, Gualillo O. Signalling pathway involved in nitric oxide synthase type II activation in chondrocytes: synergistic effect of leptin with interleukin-1. *Arthritis research & therapy*. 2005;7(3):R581-91.
32. Staunton D, Hudson KR, Heath JK. The interactions of the cytokine-binding homology region and immunoglobulin-like domains of gp130 with oncostatin M: implications for receptor complex formation. *Protein engineering*. 1998;11(11):1093-102.
33. Litherland GJ, Dixon C, Lakey RL, Robson T, Jones D, Young DA, et al. Synergistic collagenase expression and cartilage collagenolysis are phosphatidylinositol 3-kinase/Akt signaling-dependent. *The Journal of biological chemistry*. 2008;283(21):14221-9.
34. Morgan TG, Rowan AD, Dickinson SC, Jones D, Hollander AP, Deehan D, et al. Human nasal cartilage responds to oncostatin M in combination with interleukin 1 or tumour necrosis factor alpha by the release of collagen fragments via collagenases. *Annals of the rheumatic diseases*. 2006;65(2):184-90. Epub 2005/06/25.

- 1
2
3
4
5
6
7
8
9
10
11
12
13
14
15
16
17
18
19
20
21
22
23
24
25
26
27
28
29
30
31
32
33
34
35
36
37
38
39
40
41
42
43
44
45
46
47
48
49
50
51
52
53
54
55
56
57
58
59
60
35. Koshy PJ, Rowan AD, Life PF, Cawston TE. 96-Well plate assays for measuring collagenase activity using (3)H-acetylated collagen. *Analytical biochemistry*. 1999;275(2):202-7.
36. Zhang Q, Hui W, Litherland GJ, Barter MJ, Davidson R, Darrah C, et al. Differential Toll-like receptor-dependent collagenase expression in chondrocytes. *Annals of the rheumatic diseases*. 2008;67(11):1633-41.
37. Litherland GJ, Elias MS, Hui W, Macdonald CD, Catterall JB, Barter MJ, et al. Protein kinase C isoforms zeta and iota mediate collagenase expression and cartilage destruction via STAT3- and ERK-dependent c-fos induction. *The Journal of biological chemistry*. 2010;285(29):22414-25. Epub 2010/05/14.
38. Milner JM, Rowan AD, Cawston TE, Young DA. Metalloproteinase and inhibitor expression profiling of resorbing cartilage reveals pro-collagenase activation as a critical step for collagenolysis. *Arthritis research & therapy*. 2006;8(5):R142.
39. Hui W, Litherland GJ, Jefferson M, Barter MJ, Elias MS, Cawston TE, et al. Lithium protects cartilage from cytokine-mediated degradation by reducing collagen-degrading MMP production via inhibition of the P38 mitogen-activated protein kinase pathway. *Rheumatology (Oxford, England)*. 2010;49(11):2043-53. Epub 2010/07/17.
40. Rowan AD, Litherland GJ, Hui W, Milner JM. Metalloproteases as potential therapeutic targets in arthritis treatment. *Expert opinion on therapeutic targets*. 2008;12(1):1-18.
41. Gegout PP, Francin PJ, Mainard D, Presle N. Adipokines in osteoarthritis: friends or foes of cartilage homeostasis? *Joint Bone Spine*. 2008;75(6):669-71.
42. Sandell LJ. Obesity and osteoarthritis: is leptin the link? *Arthritis and rheumatism*. 2009;60(10):2858-60.
43. Vuolteenaho K, Koskinen A, Kukkonen M, Nieminen R, Paivarinta U, Moilanen T, et al. Leptin enhances synthesis of proinflammatory mediators in human osteoarthritic cartilage--mediator role of NO in leptin-induced PGE2, IL-6, and IL-8 production. *Mediators of inflammation*. 2009;2009:345838.
44. Lajeunesse D, Pelletier JP, Martel-Pelletier J. Osteoarthritis: a metabolic disease induced by local abnormal leptin activity? *Current rheumatology reports*. 2005;7(2):79-81.
45. Mutabaruka MS, Aoulad Aissa M, Delalandre A, Lavigne M, Lajeunesse D. Local leptin production in osteoarthritis subchondral osteoblasts may be responsible for their abnormal phenotypic expression. *Arthritis research & therapy*. 12(1):R20.
46. Bao JP, Chen WP, Feng J, Hu PF, Shi ZL, Wu LD. Leptin plays a catabolic role on articular cartilage. *Molecular biology reports*. 2009.

- 1
2
3
4 47. Pallu S, Francin PJ, Guillaume C, Gegout-Pottie P, Netter P, Mainard D, et al. Obesity affects the chondrocyte responsiveness to leptin in patients with
5 osteoarthritis. *Arthritis research & therapy*. 2010;12(3):R112.
6
7
8 48. Griffin TM, Huebner JL, Kraus VB, Guilak F. Extreme obesity due to impaired
9 leptin signaling in mice does not cause knee osteoarthritis. *Arthritis and rheumatism*.
10 2009;60(10):2935-44.
11
12 49. Chen TH, Chen L, Hsieh MS, Chang CP, Chou DT, Tsai SH. Evidence for a
13 protective role for adiponectin in osteoarthritis. *Biochimica et biophysica acta*.
14 2006;1762(8):711-8.
15
16
17 50. Koskinen A, Vuolteenaho K, Nieminen R, Moilanen T, Moilanen E. Leptin
18 enhances MMP-1, MMP-3 and MMP-13 production in human osteoarthritic cartilage
19 and correlates with MMP-1 and MMP-3 in synovial fluid from OA patients. *Clinical*
20 *and experimental rheumatology*. 2011;29(1):57-64.
21
22 51. Hegyi K, Fulop K, Kovacs K, Toth S, Falus A. Leptin-induced signal transduction
23 pathways. *Cell Biol Int*. 2004;28(3):159-69. Epub 2004/02/27.
24
25 52. Rowan AD, Young DA. Collagenase gene regulation by pro-inflammatory
26 cytokines in cartilage. *Front Biosci*. 2007;12:536-50.
27
28 53. Ku JH, Lee CK, Joo BS, An BM, Choi SH, Wang TH, et al. Correlation of synovial
29 fluid leptin concentrations with the severity of osteoarthritis. *Clinical rheumatology*.
30 2009;28(12):1431-5.
31
32 54. Iliopoulos D, Malizos KN, Tsezou A. Epigenetic regulation of leptin affects
33 MMP-13 expression in osteoarthritic chondrocytes: possible molecular target for
34 osteoarthritis therapeutic intervention. *Annals of the rheumatic diseases*.
35 2007;66(12):1616-21.
36
37
38
39
40
41
42
43
44
45
46
47
48
49
50
51
52
53
54
55
56
57
58
59
60

FIGURE LEGENDS:

Fig. 1. Leptin in combination with pro-inflammatory cytokines induces cartilage-collagen release from bovine cartilage by enhancing collagenolytic and gelatinolytic activities. Bovine nasal cartilage was treated with leptin (25 μ g/ml unless indicated otherwise) with OSM (10ng/ml), IL-1 α (0.25ng/ml) or TNF α (10ng/ml) in serum-free medium for 14 days. The release of collagen and enzyme activities were assayed as described in Material and Methods. **A** and **D**, Cumulative collagen release by day 14 is expressed as a percentage of the total (mean \pm SD, n=4). Inset shows an expansion of the leptin alone data for clarity. **B**, Active (open bars) and total (solid bars) collagenolytic activity values (mean \pm SD, n=4). **C**, Gelatin zymography of day 14 media. Pro and active MMP-2 and MMP-9 are indicated. *p< 0.05; **p< 0.01; ***p<0.001 vs. each respective control. Data are representative of 3 separate cartilage experiments. **E** and **F**, primary human articular chondrocytes were stimulated with leptin as indicated \pm IL-1 (0.25ng/ml) for 24 hours. The expression of *MMP1* and *MMP13* and *18s* were assayed by real time RT-PCR. The levels of *MMP1* (solid bars; **E**) and *MMP13* (grey bars; **F**) were expressed as fold against *18s* rRNA. *p< 0.05; **p< 0.01 vs. control or cytokine alone. Experiments were performed as n=4 and are representative of 3 independent experiments.

Fig. 2. Signalling pathways activated after leptin and leptin+IL-1 stimulation of chondrocytes and their role in collagenase expression. Primary HAC were serum-starved overnight and then stimulated for 20 and 60 min with either leptin (25 μ g/ml) or IL-1 (0.25ng/ml) alone or in combination. Cells were lysed, and extracts immunoblotted with antibodies against **(A)** phospho-STAT1 (Y701 or S727), phospho-STAT3 (Y705 and S727), phospho-STAT5 (Y694) and β -tubulin as loading control; **(B)** phospho-Erk (p44/42) (T202/Y204 of Erk1), phospho-JNK (SAPK)(T183/Y185), phospho-p38 (T180/Y182); or **(C)** phospho-Akt (S473 and Y308) and phospho-p65 (S536). **D** and **E**. Primary human chondrocytes were stimulated with leptin (25 μ g/ml) \pm the inhibitors; LY (LY249002, 5 μ M), U0126 (5 μ M), SB (SB203580, 10 μ M), SP (SP600125, 10 μ M), Akt IV (3 μ M) or Akt VIII (3 μ M) for 20 hours. Cells were pre-treated for 30 min with inhibitors or vehicle control prior to the addition of leptin.

1
2
3 The expression of *MMP1* (D) and *MMP13* (E) was assayed by real time RT-PCR and
4 expressed as fold relative to the control after normalisation to *18s* rRNA. * $p < 0.05$;
5
6
7 ** $p < 0.01$; *** $p < 0.001$ vs. control. Data are representative of 3 separate experiments.
8
9

10
11 **Fig. 3. Effects of signalling pathway inhibitors on leptin induced cartilage-collagen**
12 **release and WAT-conditioned media cartilage degradation. A.** Bovine cartilage was
13 stimulated with leptin (25 μ g/ml) \pm inhibitors; LY (LY249002, 5 μ M), U0126 (5 μ M), SB
14 (SB203580, 10 μ M), SP (SP600125, 10 μ M), Akt IV (3 μ M) or Akt VIII (3 μ M) or (B)
15 leptin+IL-1 (0.25ng/ml) \pm the pathway inhibitors described above, in serum-free
16 medium for 14 days. Cartilage was pre-treated for 30 min with inhibitors or vehicle
17 control prior to the addition of leptin or leptin+IL-1. C and D. WAT samples were
18 collected from the infrapatellar fat pad of OA patients as described and incubated in
19 5% FCS/DMEM culture medium (1ml medium/0.3g WAT) at 37°C for 24 hours, then
20 incubated in serum-free DMEM for 3 days. 20% (v/v) WAT-conditioned media from
21 four patients were then added to bovine cartilage alone (C) or +IL-1 (0.25ng/ml) (D)
22 in serum-free medium for 14 days. In all experiments on day 7, media were collected
23 and replaced with identical test reagents. The release of collagen was assayed as
24 described in Material and Methods. Cumulative collagen release by day 14 is
25 expressed as the percentage of total (n=4). * $p < 0.05$; ** $p < 0.01$; *** $p < 0.001$ vs.
26 control. Data are representative of 3 separate experiments.
27
28
29
30
31
32
33
34
35
36
37
38
39
40
41
42

43 **Fig. 4. Leptin in WAT-conditioned media and its effect on *MMP1* and *MMP13***
44 **expression. A,** Primary HAC were cultured in serum-free medium for 24 hours and
45 then incubated with 20% (v/v) WAT-conditioned media in DMEM for 24 hours. The
46 expression of *MMP1* (black) and *MMP13* (grey), normalised to *18s* rRNA, were
47 assayed by real time RT-PCR (n=4/WAT-conditioned medium). B, The levels of leptin
48 in WAT-conditioned media collected from OA fat pad were assayed by ELISA then
49 expressed relative to the fold induction of *MMP1* (o) or *MMP13* (■) for each WAT-
50 medium sample. Best fit lines are leptin vs. *MMP1*, broken; leptin vs. *MMP13*, solid.
51
52
53
54
55
56
57
58
59
60
61
62
63
64
65
66
67
68
69
70
71
72
73
74
75
76
77
78
79
80
81
82
83
84
85
86
87
88
89
90
91
92
93
94
95
96
97
98
99
100
101
102
103
104
105
106
107
108
109
110
111
112
113
114
115
116
117
118
119
120
121
122
123
124
125
126
127
128
129
130
131
132
133
134
135
136
137
138
139
140
141
142
143
144
145
146
147
148
149
150
151
152
153
154
155
156
157
158
159
160
161
162
163
164
165
166
167
168
169
170
171
172
173
174
175
176
177
178
179
180
181
182
183
184
185
186
187
188
189
190
191
192
193
194
195
196
197
198
199
200
201
202
203
204
205
206
207
208
209
210
211
212
213
214
215
216
217
218
219
220
221
222
223
224
225
226
227
228
229
230
231
232
233
234
235
236
237
238
239
240
241
242
243
244
245
246
247
248
249
250
251
252
253
254
255
256
257
258
259
260
261
262
263
264
265
266
267
268
269
270
271
272
273
274
275
276
277
278
279
280
281
282
283
284
285
286
287
288
289
290
291
292
293
294
295
296
297
298
299
300
301
302
303
304
305
306
307
308
309
310
311
312
313
314
315
316
317
318
319
320
321
322
323
324
325
326
327
328
329
330
331
332
333
334
335
336
337
338
339
340
341
342
343
344
345
346
347
348
349
350
351
352
353
354
355
356
357
358
359
360
361
362
363
364
365
366
367
368
369
370
371
372
373
374
375
376
377
378
379
380
381
382
383
384
385
386
387
388
389
390
391
392
393
394
395
396
397
398
399
400
401
402
403
404
405
406
407
408
409
410
411
412
413
414
415
416
417
418
419
420
421
422
423
424
425
426
427
428
429
430
431
432
433
434
435
436
437
438
439
440
441
442
443
444
445
446
447
448
449
450
451
452
453
454
455
456
457
458
459
460
461
462
463
464
465
466
467
468
469
470
471
472
473
474
475
476
477
478
479
480
481
482
483
484
485
486
487
488
489
490
491
492
493
494
495
496
497
498
499
500
501
502
503
504
505
506
507
508
509
510
511
512
513
514
515
516
517
518
519
520
521
522
523
524
525
526
527
528
529
530
531
532
533
534
535
536
537
538
539
540
541
542
543
544
545
546
547
548
549
550
551
552
553
554
555
556
557
558
559
560
561
562
563
564
565
566
567
568
569
570
571
572
573
574
575
576
577
578
579
580
581
582
583
584
585
586
587
588
589
590
591
592
593
594
595
596
597
598
599
600
601
602
603
604
605
606
607
608
609
610
611
612
613
614
615
616
617
618
619
620
621
622
623
624
625
626
627
628
629
630
631
632
633
634
635
636
637
638
639
640
641
642
643
644
645
646
647
648
649
650
651
652
653
654
655
656
657
658
659
660
661
662
663
664
665
666
667
668
669
670
671
672
673
674
675
676
677
678
679
680
681
682
683
684
685
686
687
688
689
690
691
692
693
694
695
696
697
698
699
700
701
702
703
704
705
706
707
708
709
710
711
712
713
714
715
716
717
718
719
720
721
722
723
724
725
726
727
728
729
730
731
732
733
734
735
736
737
738
739
740
741
742
743
744
745
746
747
748
749
750
751
752
753
754
755
756
757
758
759
760
761
762
763
764
765
766
767
768
769
770
771
772
773
774
775
776
777
778
779
780
781
782
783
784
785
786
787
788
789
790
791
792
793
794
795
796
797
798
799
800
801
802
803
804
805
806
807
808
809
810
811
812
813
814
815
816
817
818
819
820
821
822
823
824
825
826
827
828
829
830
831
832
833
834
835
836
837
838
839
840
841
842
843
844
845
846
847
848
849
850
851
852
853
854
855
856
857
858
859
860
861
862
863
864
865
866
867
868
869
870
871
872
873
874
875
876
877
878
879
880
881
882
883
884
885
886
887
888
889
890
891
892
893
894
895
896
897
898
899
900
901
902
903
904
905
906
907
908
909
910
911
912
913
914
915
916
917
918
919
920
921
922
923
924
925
926
927
928
929
930
931
932
933
934
935
936
937
938
939
940
941
942
943
944
945
946
947
948
949
950
951
952
953
954
955
956
957
958
959
960
961
962
963
964
965
966
967
968
969
970
971
972
973
974
975
976
977
978
979
980
981
982
983
984
985
986
987
988
989
990
991
992
993
994
995
996
997
998
999
1000

1
2
3 levels (n=3). Only WAT-media which induced a >5 fold increase in collagenase
4 expression are included. *p< 0.05; **p< 0.01 and ***p<0.001 vs. basal control or
5
6
7 WAT-conditioned medium induced levels.
8
9
10
11
12
13
14
15
16
17
18
19
20
21
22
23
24
25
26
27
28
29
30
31
32
33
34
35
36
37
38
39
40
41
42
43
44
45
46
47
48
49
50
51
52
53
54
55
56
57
58
59
60

Confidential: For Review Only

1
2
3
4 **Supplementary Figure 1. A.** Other adipokines \pm IL-1 do not induces cartilage-collagen
5 release from bovine cartilage. Bovine nasal cartilage was treated with resistin (R),
6 visfatin (V) or adiponectin (Ad) (all at 25 μ g/ml) \pm IL-1 (0.25ng/ml) in serum-free
7 medium for 14 days. The release of collagen from the cartilage was assayed as
8 described in Material and Methods. Data are representative of 3 separate cartilage
9 experiments. **B** and **C**, Primary bovine chondrocytes stimulated with leptin as
10 indicated \pm IL-1 (0.25ng/ml) for 24 hours. The expression of *MMP1* and *MMP13* and
11 18s were assayed by real time RT-PCR. The levels of *MMP1* (solid bars; **B**) and
12 *MMP13* (grey bars; **C**) were expressed as fold against 18s rRNA. **p< 0.01 vs. control
13 or cytokine alone. Experiments were performed as n=4 and are representative of 3
14 independent experiments.
15
16
17
18
19
20
21
22
23
24
25
26
27

28 **Supplementary Figure 2. Comparative gene expression between cartilages from**
29 **fracture to neck of femur (NOF) and osteoarthritis (OA) patients.** The expression of
30 the genes indicated were determined by real-time RT-PCR from total RNA isolated
31 from OA (open) and NOF (shaded) cartilage samples. Gene expression data are
32 presented as a ratio of the gene levels to those of the housekeeping gene 18s rRNA
33 using the calculation $2^{-\Delta C_T}$. Lines within the boxes represent the median, the boxes
34 represent the 25th and 75th percentiles, and the lines outside the boxes are the
35 minimum and maximum values. Only the expression of *ADIPOR2* was significantly
36 differentially expressed where ***p<0.001 (Mann-Whitney U-test).
37
38
39
40
41
42
43
44
45

46 **Supplementary Figure 3. Effects of WAT-conditioned media on collagenase**
47 **expression.** WAT samples were collected from the infrapatellar fat pad of OA
48 patients and processed as described. After culture in serum-free DMEM for 3 days,
49 harvested media were then added to cell cultures at 20% (v/v) WAT-conditioned
50 media in DMEM for 24 hours. **B.** Primary bovine nasal chondrocytes were incubated
51 with WAT-conditioned media and *MMP1* and *MMP13* expression measured by real-
52 time RT-PCR and normalised to 18s rRNA in six separate experiments (with six
53 replicates/WAT sample). The average fold-induction for each WAT sample (n=19 for
54 *MMP1* and n=15 for *MMP13*) is plotted with the lines within the boxes representing
55
56
57
58
59
60

1
2
3 the median, the boxes represent the 25th and 75th percentiles, and lines outside the
4 boxes are the minimum and maximum values. **B** and **C**. Primary HAC were co-
5 incubated with an anti-leptin antibody (20µg/ml) or irrelevant control (IgG) and
6 WAT-conditioned media for 24 hours, then the expression of *MMP1* (**C**) and *MMP13*
7 (**D**) assayed by real time RT-PCR (n=3) and normalised to *18s*. *p< 0.05; **p< 0.01
8 and ***p<0.001 vs. basal control or WAT-conditioned medium induced levels.
9
10
11
12
13
14
15
16
17
18
19
20
21
22
23
24
25
26
27
28
29
30
31
32
33
34
35
36
37
38
39
40
41
42
43
44
45
46
47
48
49
50
51
52
53
54
55
56
57
58
59
60

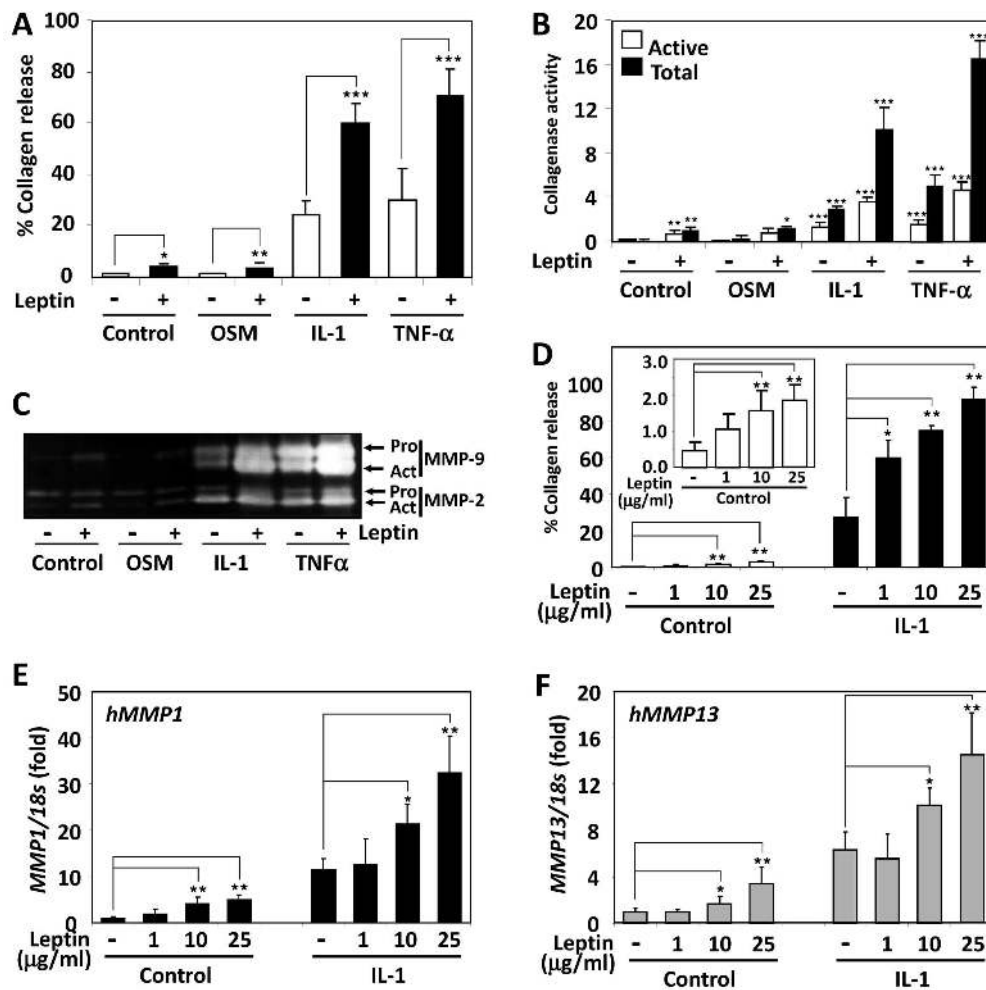


Fig. 1. Leptin in combination with pro-inflammatory cytokines induces cartilage-collagen release from bovine cartilage by enhancing collagenolytic and gelatinolytic activities. Bovine nasal cartilage was treated with leptin (25 μ g/ml unless indicated otherwise) with OSM (10ng/ml), IL-1 α (0.25ng/ml) or TNF α (10ng/ml) in serum-free medium for 14 days. The release of collagen and enzyme activities were assayed as described in Material and Methods. A and D, Cumulative collagen release by day 14 is expressed as a percentage of the total (mean \pm SD, n=4). Inset shows an expansion of the leptin alone data for clarity. B, Active (open bars) and total (solid bars) collagenolytic activity values (mean \pm SD, n=4). C, Gelatin zymography of day 14 media. Pro and active MMP-2 and MMP-9 are indicated. * p < 0.05; ** p < 0.01; *** p < 0.001 vs. each respective control. Data are representative of 3 separate cartilage experiments. E and F, primary human articular chondrocytes were stimulated with leptin as indicated \pm IL-1 (0.25ng/ml) for 24 hours. The expression of MMP1 and MMP13 and 18s were assayed by real time RT-PCR. The levels of MMP1 (solid bars; E) and MMP13 (grey bars; F) were expressed as fold against 18s rRNA. * p < 0.05; ** p < 0.01 vs. control or cytokine alone. Experiments were performed as n=4 and are representative of 3 independent experiments.

179x179mm (300 x 300 DPI)

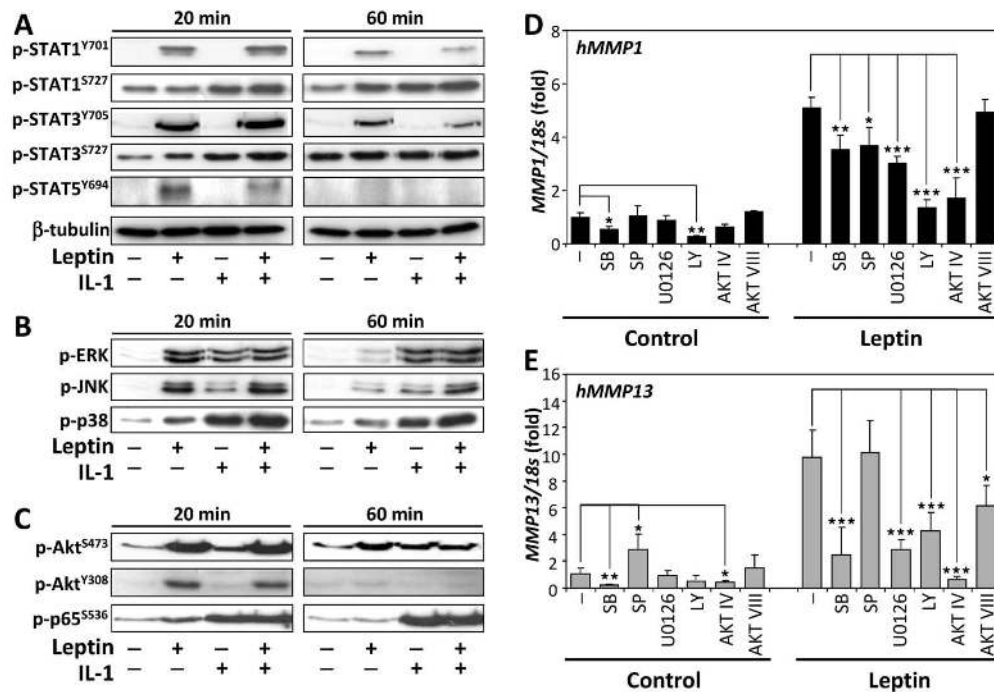


Fig. 2. Signalling pathways activated after leptin and leptin+IL-1 stimulation of chondrocytes and their role in collagenase expression. Primary HAC were serum-starved overnight and then stimulated for 20 and 60 min with either leptin (25 μ g/ml) or IL-1 (0.25ng/ml) alone or in combination. Cells were lysed, and extracts immunoblotted with antibodies against (A) phospho-STAT1 (Y701 or S727), phospho-STAT3 (Y705 and S727), phospho-STAT5 (Y694) and β -tubulin as loading control; (B) phospho-Erk (p44/42) (T202/Y204 of Erk1), phospho-JNK (SAPK)(T183/Y185), phospho-p38 (T180/Y182); or (C) phospho-Akt (S473 and Y308) and phospho-p65 (S536). D and E. Primary human chondrocytes were stimulated with leptin (25 μ g/ml) \pm the inhibitors; LY (LY249002, 5 μ M), U0126 (5 μ M), SB (SB203580, 10 μ M), SP (SP600125, 10 μ M), Akt IV (3 μ M) or Akt VIII (3 μ M) for 20 hours. Cells were pre-treated for 30 min with inhibitors or vehicle control prior to the addition of leptin. The expression of MMP1 (D) and MMP13 (E) was assayed by real time RT-PCR and expressed as fold relative to the control after normalisation to 18s rRNA. * p <0.05; ** p <0.01; *** p <0.001 vs. control. Data are representative of 3 separate experiments.

122x85mm (300 x 300 DPI)

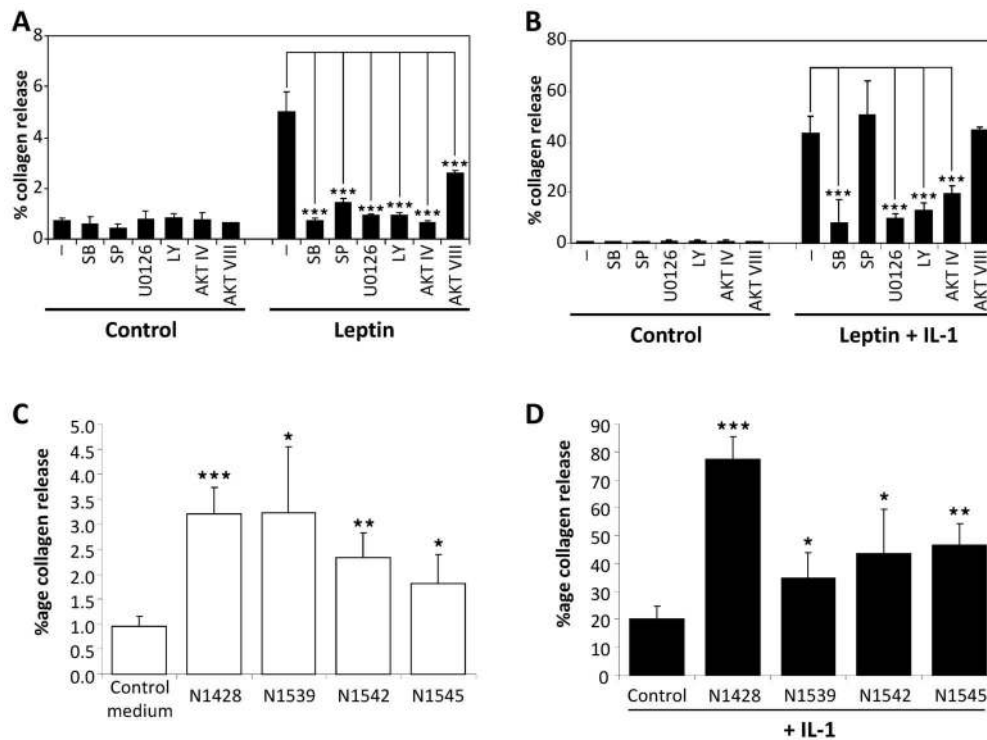


Fig. 3. Effects of signalling pathway inhibitors on leptin induced cartilage-collagen release and WAT-conditioned media cartilage degradation. A. Bovine cartilage was stimulated with leptin (25 μ g/ml) \pm inhibitors; LY (LY249002, 5 μ M), U0126 (5 μ M), SB (SB203580, 10 μ M), SP (SP600125, 10 μ M), Akt IV (3 μ M) or Akt VIII (3 μ M) or (B) leptin+IL-1 (0.25ng/ml) \pm the pathway inhibitors described above, in serum-free medium for 14 days. Cartilage was pre-treated for 30 min with inhibitors or vehicle control prior to the addition of leptin or leptin+IL-1. C and D. WAT samples were collected from the infrapatellar fat pad of OA patients as described and incubated in 5% FCS/DMEM culture medium (1ml medium/0.3g WAT) at 37 $^{\circ}$ C for 24 hours, then incubated in serum-free DMEM for 3 days. 20% (v/v) WAT-conditioned media from four patients were then added to bovine cartilage alone (C) or +IL-1 (0.25ng/ml) (D) in serum-free medium for 14 days. In all experiments on day 7, media were collected and replaced with identical test reagents. The release of collagen was assayed as described in Material and Methods. Cumulative collagen release by day 14 is expressed as the percentage of total (n=4). * p <0.05; ** p <0.01; *** p <0.001 vs. control. Data are representative of 3 separate experiments.

132x97mm (300 x 300 DPI)

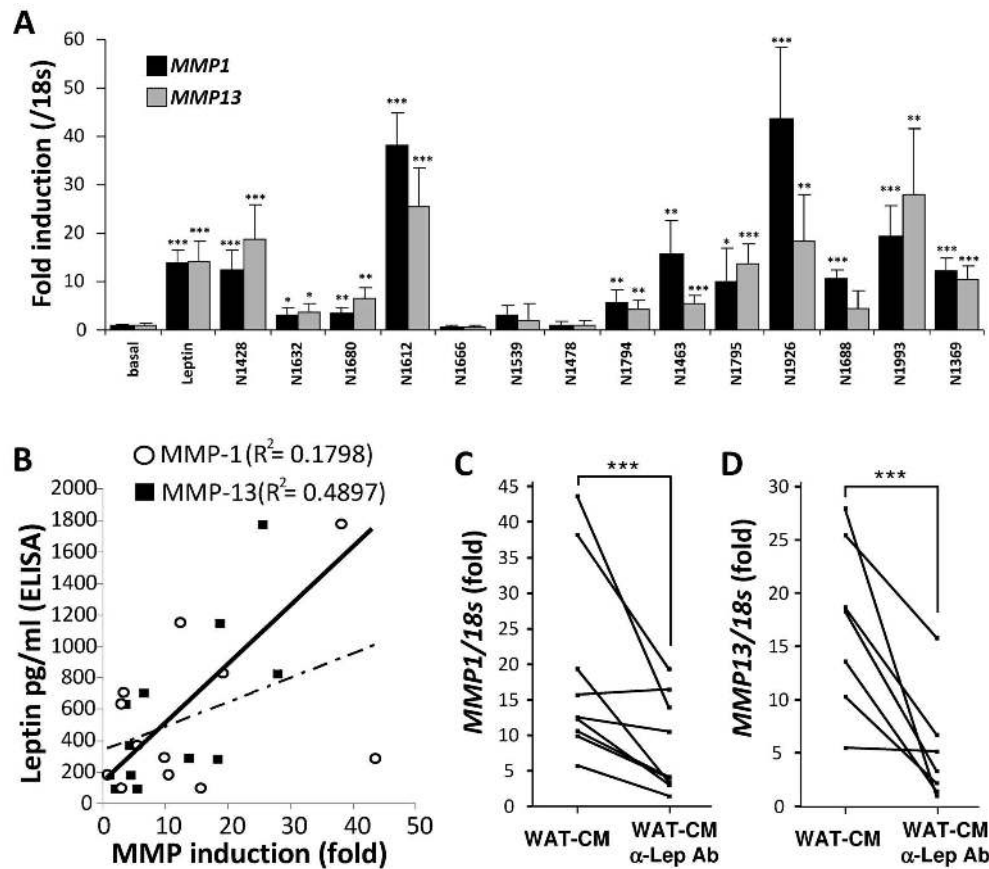


Fig. 4. Leptin in WAT-conditioned media and its effect on MMP1 and MMP13 expression. A, Primary HAC were cultured in serum-free medium for 24 hours and then incubated with 20% (v/v) WAT-conditioned media in DMEM for 24 hours. The expression of MMP1 (black) and MMP13 (grey), normalised to 18s rRNA, were assayed by real time RT-PCR (n=4/WAT-conditioned medium). B, The levels of leptin in WAT-conditioned media collected from OA fat pad were assayed by ELISA then expressed relative to the fold induction of MMP1 (o) or MMP13 (■) for each WAT-medium sample. Best fit lines are leptin vs. MMP1, broken; leptin vs. MMP13, solid. C and D, Primary HAC were co-cultured with an anti-leptin antibody (20µg/ml) and 20% (v/v) WAT-conditioned media in DMEM for 24 hours, then the expression of MMP1 (C) and MMP13 (D) assayed by real time RT-PCR and normalised to 18s rRNA levels (n=3). Only WAT-media which induced a >5 fold increase in collagenase expression are included. *p< 0.05; **p< 0.01 and ***p<0.001 vs. basal control or WAT-conditioned medium induced levels.

151x133mm (300 x 300 DPI)

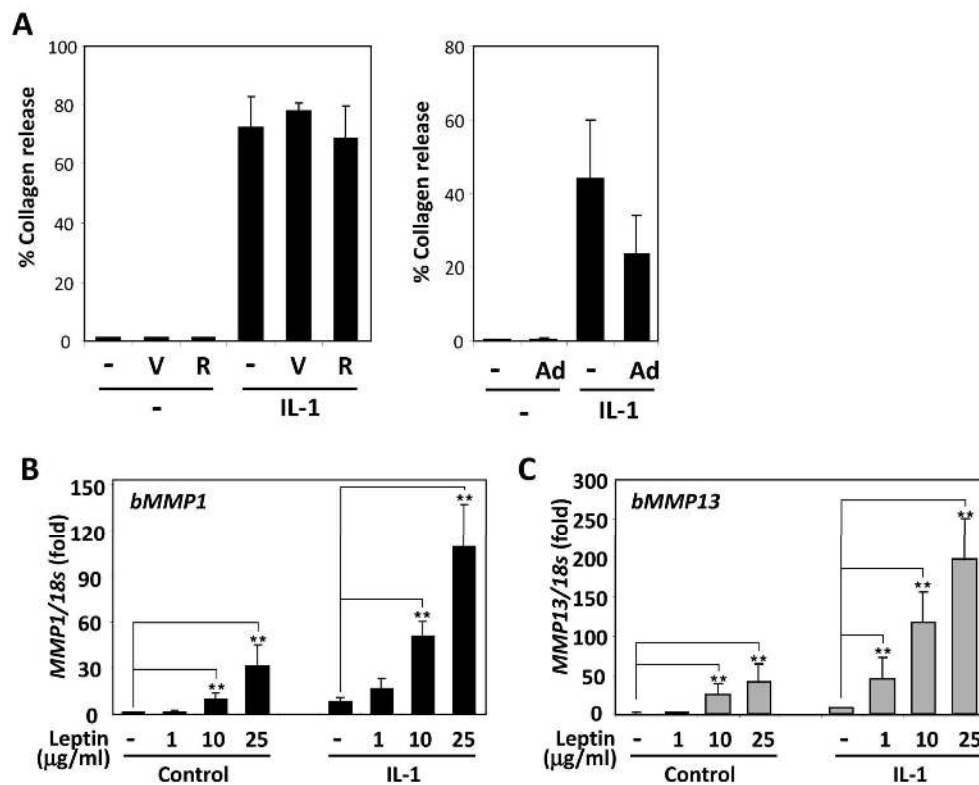


Figure S1. A. Other adipokines \pm IL-1 do not induces cartilage-collagen release from bovine cartilage. Bovine nasal cartilage was treated with resistin (R), visfatin (V) or adiponectin (Ad) (all at 25 μ g/ml) \pm IL-1 (0.25ng/ml) in serum-free medium for 14 days. The release of collagen from the cartilage was assayed as described in Material and Methods. Data are representative of 3 separate cartilage experiments. B and C, Primary bovine chondrocytes stimulated with leptin as indicated \pm IL-1 (0.25ng/ml) for 24 hours. The expression of MMP1 and MMP13 and 18s were assayed by real time RT-PCR. The levels of MMP1 (solid bars; B) and MMP13 (grey bars; C) were expressed as fold against 18s rRNA. ** $p < 0.01$ vs. control or cytokine alone. Experiments were performed as $n=4$ and are representative of 3 independent experiments.

144x115mm (300 x 300 DPI)

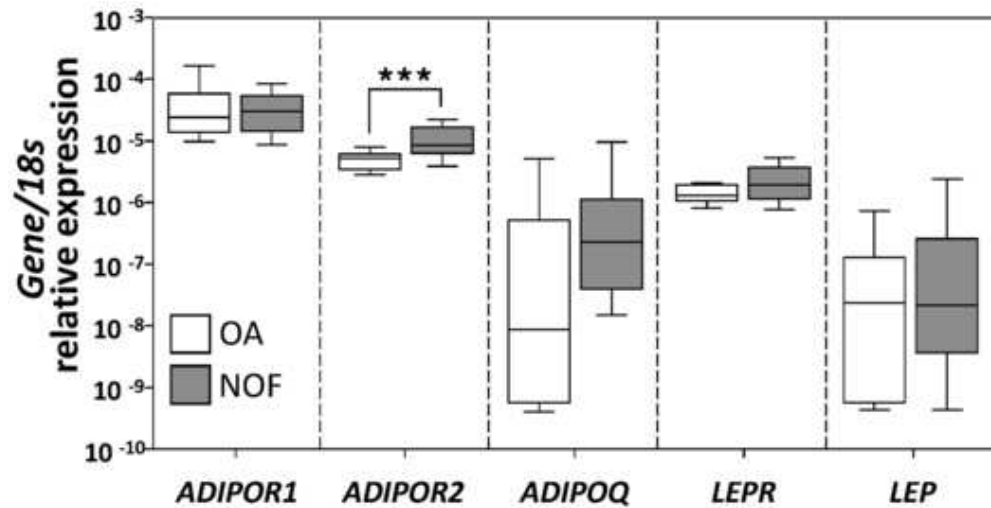


Figure S2. Comparative gene expression between cartilages from fracture to neck of femur (NOF) and osteoarthritis (OA) patients. The expression of the genes indicated were determined by real-time RT-PCR from total RNA isolated from OA (open) and NOF (shaded) cartilage samples. Gene expression data are presented as a ratio of the gene levels to those of the housekeeping gene 18s rRNA using the calculation $2^{-\Delta\text{CT}}$. Lines within the boxes represent the median, the boxes represent the 25th and 75th percentiles, and the lines outside the boxes are the minimum and maximum values. Only the expression of ADIPOR2 was significantly differentially expressed where $***p < 0.001$ (Mann-Whitney U-test).
 44x22mm (300 x 300 DPI)

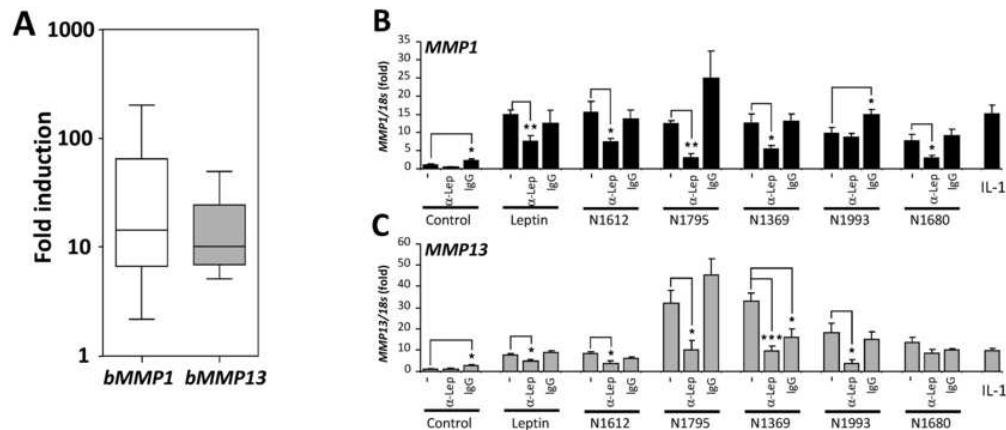


Figure S3. Effects of WAT-conditioned media on collagenase expression. WAT samples were collected from the infrapatellar fat pad of OA patients and processed as described. After culture in serum-free DMEM for 3 days, harvested media were then added to cell cultures at 20% (v/v) WAT-conditioned media in DMEM for 24 hours. B. Primary bovine nasal chondrocytes were incubated with WAT-conditioned media and MMP1 and MMP13 expression measured by real-time RT-PCR and normalised to 18s rRNA in six separate experiments (with six replicates/WAT sample). The average fold-induction for each WAT sample ($n=19$ for MMP1 and $n=15$ for MMP13) is plotted with the lines within the boxes representing the median, the boxes represent the 25th and 75th percentiles, and lines outside the boxes are the minimum and maximum values. B and C. Primary HAC were co-cubated with an anti-leptin antibody ($20\mu\text{g/ml}$) or irrelevant control (IgG) and WAT-conditioned media for 24 hours, then the expression of MMP1 (C) and MMP13 (D) assayed by real time RT-PCR ($n=3$) and normalised to 18s. * $p < 0.05$; ** $p < 0.01$ and *** $p < 0.001$ vs. basal control or WAT-conditioned medium induced levels.
70x30mm (300 x 300 DPI)