

Limits on Intrinsic Magnetism in Graphene

M. Sepioni,¹ R. R. Nair,¹ S. Rablen,¹ J. Narayanan,¹ F. Tuna,² R. Winpenny,² A. K. Geim,^{1,†} and I. V. Grigorieva¹

¹Manchester Centre for Mesoscience & Nanotechnology, University of Manchester, Manchester M13 9PL, United Kingdom

²School of Chemistry, University of Manchester, Manchester M13 9PL, United Kingdom

(Received 25 February 2010; published 12 November 2010)

We have studied magnetization of graphene nanocrystals obtained by sonic exfoliation of graphite. No ferromagnetism is detected at any temperature down to 2 K. Neither do we find strong paramagnetism expected due to the massive amount of edge defects. Rather, graphene is strongly diamagnetic, similar to graphite. Our nanocrystals exhibit only a weak paramagnetic contribution noticeable below 50 K. The measurements yield a single species of defects responsible for the paramagnetism, with approximately one magnetic moment per typical graphene crystallite.

DOI: [10.1103/PhysRevLett.105.207205](https://doi.org/10.1103/PhysRevLett.105.207205)

PACS numbers: 75.75.-c, 73.22.Pr, 75.50.Dd, 81.05.ue

The long-standing interest in magnetic behavior of pure carbon-based systems has been further stimulated by reports of room-temperature (T) magnetic ordering in highly oriented pyrolytic graphite (HOPG) [1], nanographites [2], nanodiamonds [3], and disordered carbon films [4]. Although in these studies magnetization signals M were small (typically, less than ~ 0.1 emu/g, i.e., less than 0.1% of the magnetization of iron), a consensus is emerging that, despite the absence of d or f electrons, magnetism in carbon systems may exist under a variety of experimental conditions. Furthermore, it is shown theoretically that atomic scale defects in graphene-based materials, e.g., adatoms and vacancies, can carry a magnetic moment μ of about one Bohr magneton, μ_B [5–8]. Also, extended defects such as edges can give rise to M [9,10]. The possibility of long-range magnetic ordering has been predicted for randomly distributed point defects and grain boundaries [6,8], and bilayer graphene was suggested to exhibit spontaneous many-body ferromagnetism [11]. All this leaves little doubt that magnetism in graphene-based systems can in principle exist, although the whole subject remains highly controversial, especially as concerns (i) the role of environment and magnetic contamination [12] and (ii) the mechanism that could lead to the strong interaction required for ferromagnetism at room T .

The recent interest in isolated graphene has inevitably led to the question of possible ferromagnetism in this novel material too, especially due to the fact that it presents the basic structural element for all other graphitic forms [13]. The first experiments reported room- T ferromagnetism in bulk samples obtained by conversion of nanodiamond and arc evaporation of graphite [14] and in graphene oxide [15]. In both studies, magnetic signals were again small (saturation magnetization $M_S \sim 0.1$ – 1 emu/g) and have left open the same questions that haunt the previous reports of room- T ferromagnetism in carbon materials. The dimensionality of graphene makes it even harder to explain the ferromagnetism theoretically.

In this Letter, we have studied magnetization of graphene obtained by direct ultrasonic cleavage of high-purity HOPG [16]. The resulting samples were laminates consisting of mostly mono- and bilayer crystallites with typical sizes of 10 to 50 nm, aligned parallel to each other and rotationally disordered. The samples weighed several mg and were suitable for SQUID magnetometry. We found that the laminates are strongly diamagnetic and exhibit no sign of ferromagnetism at any T . Only by employing fields H up to 70 kOe, we have detected a notable low- T paramagnetic contribution ($M_S \approx 0.1$ emu/g). The paramagnetism is orders of magnitude smaller than that expected for the large number of broken bonds present in the laminates. By varying preparation procedures and environmental factors, we found that the paramagnetism is rather reproducible and, in further control experiments including the use of x-ray fluorescence spectroscopy (XRFS) and boron nitride laminates, ruled out any contamination with magnetic impurities.

Our samples [Fig. 1] were prepared by following the procedures reported in [16]. In brief, HOPG crystals—the cleanest form of graphite available (XRFS shows no paramagnetic impurities at a level of 1 ppm)—were exfoliated by extensive sonication, using different organic solvents, namely, chloroform, dimethylformamide (DMF) and N -methylpyrrolidone. The suspensions were centrifuged to obtain stable solutions. These were passed through alumina filters, which resulted in the deposition of graphene crystallites forming several μm thick laminates [Fig. 1(a)]. Extreme care was taken to use highest purity solvents (content of magnetic impurities < 1 ppm) and also to avoid any contamination. To verify the impurity content in the laminates, we employed XRFS and found no f or d impurities above a detection limit of ≈ 10 ppm [17].

Figure 1 shows a typical scanning electron microscopy (SEM) image of our samples. One can see that individual crystallites mostly have irregular shapes but the edges follow main crystallographic directions [13] [Fig. 1(b)]. The smallest crystals tend to have distorted hexagon shapes. The

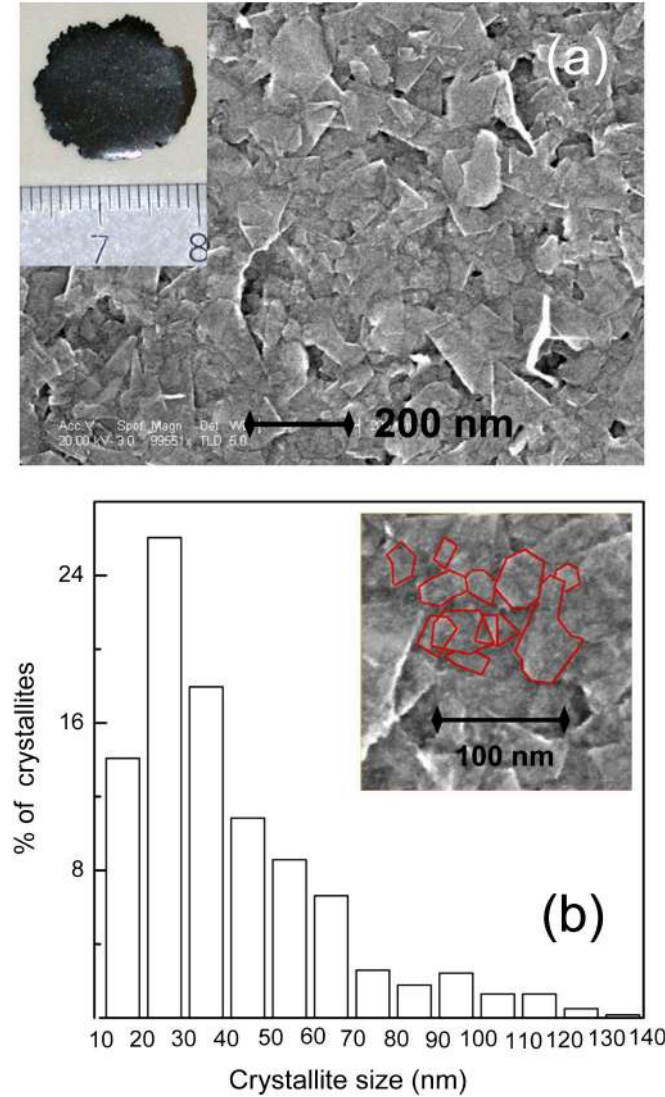


FIG. 1 (color online). Graphene laminates. (a) Typical SEM micrograph. Inset: photo of the whole sample. (b) Histogram shows the size distribution for 300 crystallites found within the $\sim 1 \mu\text{m}^2$ area imaged in (a). Crystal sizes were determined as geometrical averages. The inset zooms into the central region of (a). Edges of some of the smallest crystals are outlined for clarity.

majority of crystals are very small, with 60% having sizes below 40 nm, that is, much smaller than the sizes reported for short or mild sonication [16]. The histogram shown in Fig. 1(b) is characteristic for all our samples (for details, see [17]). Previous studies of similar suspensions showed that $\sim 30\%$ of crystallites were monolayers, with the rest made up of 2 to 5 layers [16,18]. By using transmission electron microscopy, we counted crystals of different thicknesses and found that our samples contained a larger proportion of monolayers (up to 50%), apparently due to more extensive sonication. The separation between graphene planes in the laminates was analyzed by x-ray diffraction. The most frequently found spacing was $\approx 3.36 \text{ \AA}$, with a further large

proportion ranging from ≈ 3.37 to 3.86 \AA , i.e., significantly larger than the interlayer distance in graphite (3.334 \AA). This, together with the rotational disorder (as seen by SEM and transmission electron microscopy), implies that during the filtration, crystals do not restack and register into graphite but form a collection of electronically decoupled nanocrystals [19].

Magnetization measurements were performed using a SQUID magnetometer MPMS XL7. HOPG exhibited room- T diamagnetic mass susceptibility $\chi_m \approx -3 \times 10^{-5} \text{ emu/g}$ (dimensionless cgs susceptibility $\chi \approx -6.5 \times 10^{-5}$) in H perpendicular to graphene and $\chi \approx -8.5 \times 10^{-7}$ in parallel H , in agreement with literature values. The diamagnetism slightly increased as T decreased from 300 to 100 K and became essentially T independent at lower T . No paramagnetism was detected in HOPG at any T within our experimental accuracy. Similar to HOPG, graphene laminates exhibited strong but distinctly smaller diamagnetism: $\chi \approx -1.5 \times 10^{-5}$ in perpendicular H . In parallel H , laminates were somewhat more diamagnetic than HOPG [Fig. 2], which is attributed to crystallites being not perfectly aligned. No ferromagnetism was detected at any T . These observations are in stark disagreement with the reports of room- T ferromagnetism in graphenelike materials [14,15] and, also, have implications for interpretation of the ferromagnetism observed in graphite and other graphitic materials.

Despite the absence of ferromagnetism, our samples exhibited noticeable low T paramagnetism, which is discussed in the rest of the paper. Figure 2 plots the measured mass magnetization M as a function of H and T . One can see that as T decreases below 20 K, the magnetization response in parallel H becomes positive. As T is lowered further, a typical paramagnetic behavior emerges, with low-field susceptibility $\chi = M/H$ following the Curie law $\chi \propto 1/T$ [Fig. 2(b)]. In perpendicular H , magnetization was dominated by diamagnetism, as expected. Nevertheless, after subtracting the linear background, $\Delta M(H, T)$ curves showed exactly the same paramagnetic contribution as in parallel H [Fig. 2(b)]; i.e., the paramagnetism is isotropic. To characterize the magnetic species contributing to the observed behavior, we plot M as a function of the reduced field H/T . Figure 3 shows that all the $\Delta M(H/T)$ dependences collapse on a single curve, indicating a single type of noninteracting spins present in graphene. The observed behavior is well described by the standard Brillouin function

$$M = NgJ\mu_B \left\{ \frac{2J+1}{2J} \text{ctnh} \left[\frac{(2J+1)x}{2J} \right] - \frac{1}{2J} \text{ctnh} \left(\frac{x}{2J} \right) \right\}$$

where $x = gJ\mu_B H/k_B T$ and k_B is the Boltzmann constant. The g factor and the angular momentum number J define the initial slope of $M(H/T)$ whereas the saturation level depends on the number of present spins, N . Assuming $g = 2$, the Brillouin function provides excellent fits for

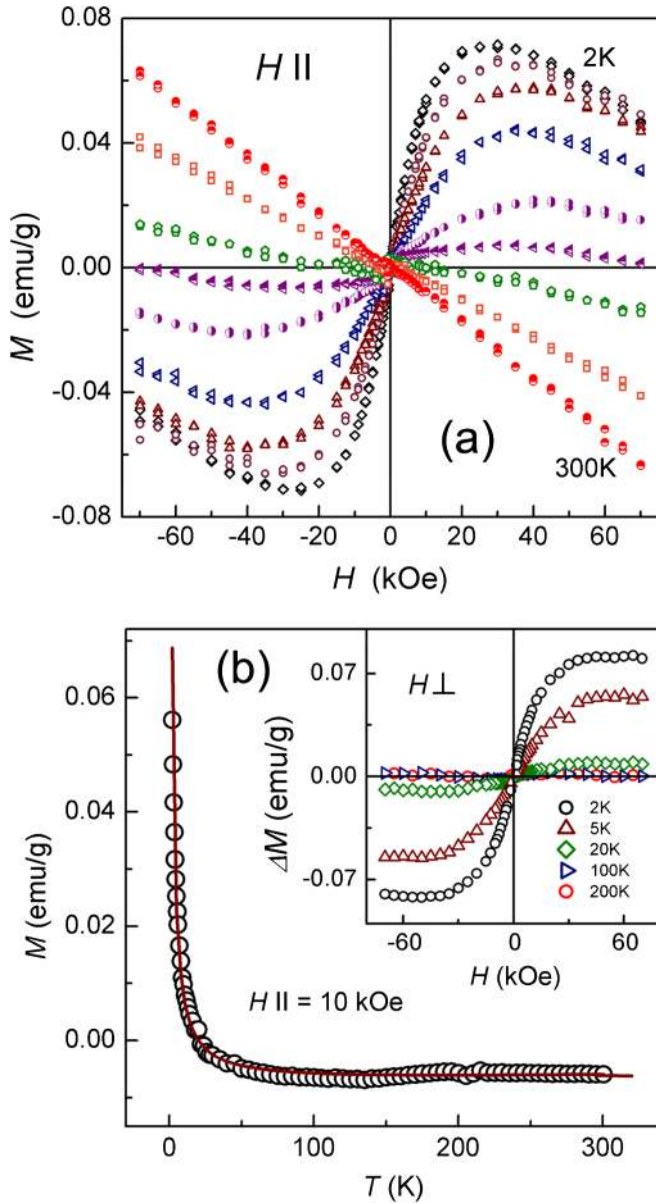


FIG. 2 (color online). Magnetic response of graphene. (a) Magnetic moment M as a function of parallel H at different T : (from top to bottom) 2, 3, 4, 5, 10, 15, 20, 50, and 300 K. (b) $M(T)$ in parallel H for the sample in (a). Symbols are the measurements; the curve is the Curie law calculated self-consistently (see text) with an account taken of a constant diamagnetic background ≈ -0.008 emu/g in this particular H . Inset: Excess moment ΔM after subtracting the diamagnetic background (measured at room T) as a function of perpendicular H .

$J = 2$ and $5/2$ [Fig. 3]. Self-consistently, the Curie law $M/H = [NJ(J+1)g^2\mu_B^2]/(3k_B T)$ with $J = 5/2$ and $N = 2.2 \times 10^{18} \text{ g}^{-1}$ inferred from Fig. 3 also gives an excellent fit to $M(T)$ dependence in Fig. 2(b). $M(T)$ calculated for $J = 2$ ($N = 2.8 \times 10^{18} \text{ g}^{-1}$) provides an equally good fit (not shown). If for some reasons the g factor is enhanced, the experimental data can be described by a smaller J but

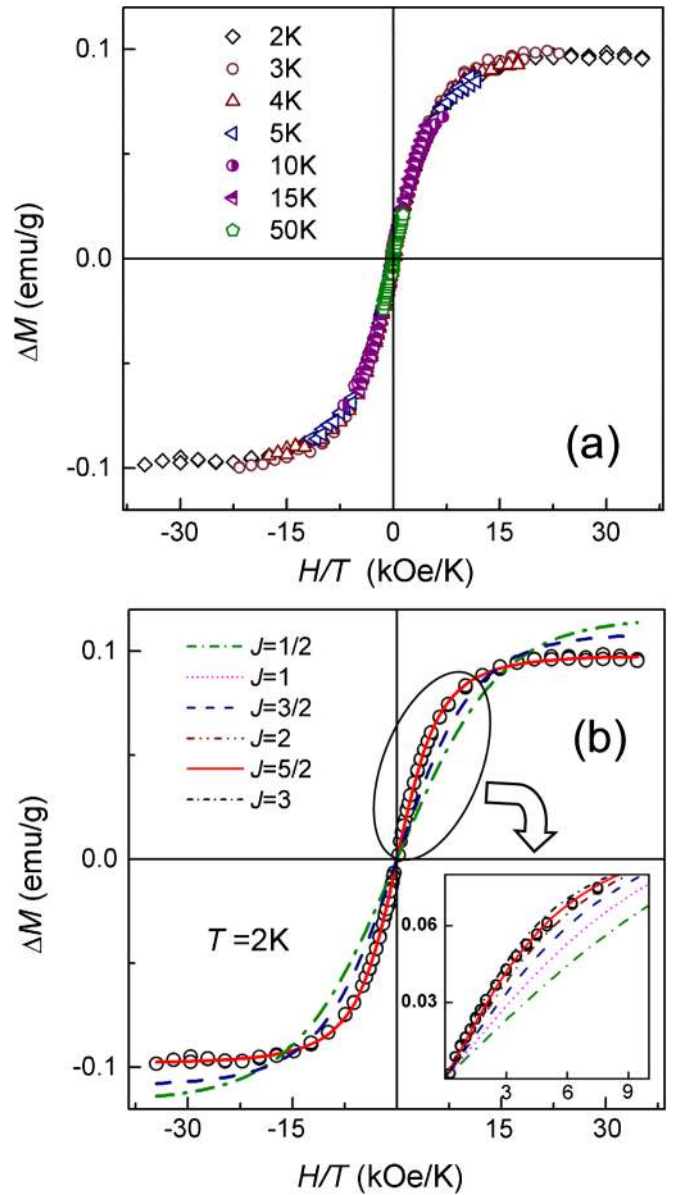


FIG. 3 (color online). Analysis of graphene's weak paramagnetism: (a) Magnetization curves of Fig. 2(a) plotted as a function of reduced field H/T with the diamagnetic background subtracted. (b) Fits of the data in (a) using the Brillouin function with different values of J . For clarity, only data at 2 K are used here. Inset: Zoom of the low- H part of the graph, which is most sensitive to J .

the fit becomes progressively poor, and only $J = 3/2$ (that requires $g \approx 2.5$) cannot be ruled out. The trivial free-electron $J = 1/2$ expected for vacancies and most adatoms [5–8] cannot fit the data. Figure 3 allows us to conclude that the observed paramagnetism is due to a single species with $\mu = gJ\mu_B \approx 4-5\mu_B$ and concentration ≈ 50 ppm (one moment per 20000 carbon atoms or per $40 \times 40 \text{ nm}^2$ crystal).

The question that usually arises when ferromagnetism is reported for materials that contain no f or d electrons is

whether the observed signals can be explained by contamination. XRF detected no paramagnetic impurities at a level of 10 ppm over the whole sample (cf. [4,14,15]). Nonetheless, we crosschecked this conclusion in a complementary study where we intentionally allowed a small amount of paramagnetic contamination by using a standard grade dimethylformamide (~ 5 ppm Fe). As a result, XRF detected $\approx 20 \pm 5$ ppm of Fe in the resulting laminates [17], whereas SQUID measurements yielded an extra paramagnetic contribution of $\approx 15 \pm 5$ ppm. The agreement between the XRF and SQUID analyses proves that our XRF was reliable in discerning a minute magnetic contamination. Its amount needed to produce the observed M in clean laminates would be detected easily. In another control experiment, we used boron nitride to make similar laminates (the two materials have similar structural but not electronic properties). No para- or ferromagnetism was detected in the boron nitride laminates.

What could be the origin of the detected moments? Unlike room- T ferromagnetism, intrinsic paramagnetism with $J = 1/2$ would agree with the existing theories because vacancies, adatoms, and edges can carry localized moments [5–10]. Typical levels of chemical doping in graphene are ~ 1000 ppm (10^{12} cm $^{-2}$) [13], and XRF detected several nonmagnetic elements with concentrations reaching sometimes up to ≈ 200 ppm for Ca, 250 ppm for S, and 1000 ppm for Cl [17], depending on the used solvent. Some of these nonmagnetic impurities can, in principle, bind to graphene and generate magnetic moments [5–7]. However, the measured $M(H, T)$ were reproducible in different runs whereas concentrations of nonmagnetic impurities varied randomly (e.g., no Cl or S was detected in some samples). Also, both *in* and *ex situ* annealing at T up to 600 °C did not result in magnetization changes. This indicates that the observed paramagnetism is related to structural rather than chemical defects. Furthermore, we found a notable reduction in M for laminates with larger crystallites (due to shorter sonication), although this can also be related to a larger portion of multilayers. Annealing in oxygen at 450 °C, which etched holes in graphene [20], led to a notable ($\sim 50\%$) increase in M , which also points in the direction of edge-related magnetism. For our typical crystals, the number of broken bonds along the edges is a few percent. If we assume that μ_B is associated with each nonbonding electron, the number of spins contributing to paramagnetism would be $\sim 10^4$ per million atoms, i.e., 2 orders of magnitude more than observed. This proves that most of the broken bonds do not contribute to magnetism, being reconstructed or passivated [9].

Magnetic moments in graphene can be associated not only with point defects but also with extended ones such as zigzag edges [9,10]. In this case, the magnetic moment would depend on the total length of zigzag segments and, in principle, can be arbitrarily large. At first glance, this

mechanism seems to lack an explanation for the value of M_S being much smaller than the available broken bonds could generate. However, a recent theory [21] suggests that, due to interactions between different zigzag segments in sub-100 nm samples of a random shape, just a small number of noncompensated spins can survive (< 10), which depends on sample size only logarithmically. This is in agreement with our observation that the paramagnetism corresponds approximately to one magnetic moment per crystallite. However, we cannot exclude that the observed signal comes from bi-layer or even trilayer nanocrystals whose electronic structure allows more options for the emergence of paramagnetism [11]. Our main conclusion is, however, the absence of any sign of ferromagnetism in graphene even at 2 K.

This work was supported by EPSRC, ONR, AFOSR, and the Royal Society.

*Corresponding author: irina.grigorieva@manchester.ac.uk
†geim@manchester.ac.uk

- [1] P. Esquinazi *et al.*, *Phys. Rev. Lett.* **91**, 227201 (2003); *Phys. Rev. B* **66**, 024429 (2002).
- [2] T. Enoki and K. Takai, *Solid State Commun.* **149**, 1144 (2009).
- [3] S. Talapatra *et al.*, *Phys. Rev. Lett.* **95**, 097201 (2005).
- [4] A. V. Rode *et al.*, *Phys. Rev. B* **70**, 054407 (2004); H. Ohldag *et al.*, *Phys. Rev. Lett.* **98**, 187204 (2007).
- [5] A. V. Krasheninnikov *et al.*, *Phys. Rev. Lett.* **102**, 126807 (2009).
- [6] O. V. Yazyev, *Phys. Rev. Lett.* **101**, 037203 (2008).
- [7] M. P. Lopez-Sancho, F. de Juan, and M. A. H. Vozmediano, *Phys. Rev. B* **79**, 075413 (2009).
- [8] R. Faccio *et al.*, *Phys. Rev. B* **77**, 035416 (2008).
- [9] K. Harigaya and T. Enoki, *Chem. Phys. Lett.* **351**, 128 (2002).
- [10] M. Fujita *et al.*, *J. Phys. Soc. Jpn.* **65**, 1920 (1996); Y. Kobayashi *et al.*, *Phys. Rev. B* **73**, 125415 (2006).
- [11] E. V. Castro *et al.*, *Phys. Rev. Lett.* **100**, 186803 (2008).
- [12] H. Sato *et al.*, *Solid State Commun.* **125**, 641 (2003).
- [13] A. K. Geim and K. S. Novoselov, *Nature Mater.* **6**, 183 (2007).
- [14] H. S. S. Ramakrishna Matte, K. S. Subrahmanyam, and C. N. R. Rao, *J. Phys. Chem. C* **113**, 9982 (2009).
- [15] Y. Wang *et al.*, *Nano Lett.* **9**, 220 (2009).
- [16] P. Blake *et al.*, *Nano Lett.* **8**, 1704 (2008); Y. Hernandez *et al.*, *Nature Nanotech.* **3**, 563 (2008).
- [17] See supplementary materials at <http://link.aps.org/supplemental/10.1103/PhysRevLett.105.207205>.
- [18] U. Khan, A. O'Neill, M. Lotya, S. De, and J. Coleman, *Small* **6**, 864 (2010).
- [19] J. Hass *et al.*, *Phys. Rev. Lett.* **100**, 125504 (2008).
- [20] P. Nemes-Incze, G. Magda, K. Kamara, and L. P. Biro, *Nano Res.* **3**, 110 (2010).
- [21] M. Wimmer, A. R. Akhmerov, and F. Guinea, *Phys. Rev. B* **82**, 045409 (2010).