

University of Nebraska - Lincoln

DigitalCommons@University of Nebraska - Lincoln

NASA Publications

National Aeronautics and Space Administration

2012

Linearized T-matrix and Mie scattering computations

R. Spurr

RT Solutions, Inc, rtsolutions@verizon.net

J. Wang

University of Nebraska- Lincoln

J. Zeng

University of Nebraska- Lincoln

M. I. Mishchenko

NASA Goddard Institute for Space Studies

Follow this and additional works at: <https://digitalcommons.unl.edu/nasapub>



Part of the [Physical Sciences and Mathematics Commons](#)

Spurr, R.; Wang, J.; Zeng, J.; and Mishchenko, M. I., "Linearized T-matrix and Mie scattering computations" (2012). *NASA Publications*. 91.

<https://digitalcommons.unl.edu/nasapub/91>

This Article is brought to you for free and open access by the National Aeronautics and Space Administration at DigitalCommons@University of Nebraska - Lincoln. It has been accepted for inclusion in NASA Publications by an authorized administrator of DigitalCommons@University of Nebraska - Lincoln.



Contents lists available at SciVerse ScienceDirect

Journal of Quantitative Spectroscopy & Radiative Transfer

journal homepage: www.elsevier.com/locate/jqsrt

Linearized T-matrix and Mie scattering computations

R. Spurr^{a,*}, J. Wang^b, J. Zeng^b, M.I. Mishchenko^c^a RT Solutions, Inc. Cambridge, MA 02138, USA^b Department of Earth and Atmospheric Sciences, University of Nebraska—Lincoln, NE 68588, USA^c NASA Goddard Institute for Space Studies, 2880 Broadway, New York, NY 10025, USA

ARTICLE INFO

Article history:

Received 27 September 2011

Accepted 24 November 2011

Available online 1 December 2011

Keywords:

Light scattering

T-matrix and Mie codes

Analytical linearization

ABSTRACT

We present a new linearization of T-Matrix and Mie computations for light scattering by non-spherical and spherical particles, respectively. In addition to the usual extinction and scattering cross-sections and the scattering matrix outputs, the linearized models will generate analytical derivatives of these optical properties with respect to the real and imaginary parts of the particle refractive index, and (for non-spherical scatterers) with respect to the “shape” parameter (the spheroid aspect ratio, cylinder diameter/height ratio, Chebyshev particle deformation factor). These derivatives are based on the essential linearity of Maxwell’s theory. Analytical derivatives are also available for polydisperse particle size distribution parameters such as the mode radius. The T-matrix formulation is based on the NASA Goddard Institute for Space Studies FORTRAN 77 code developed in the 1990s. The linearized scattering codes presented here are in FORTRAN 90 and will be made publicly available.

© 2011 Elsevier Ltd. All rights reserved.

1. Introduction

The generation of accurate light scattering properties for spherical and non-spherical particles is extremely important for many applications in a wide variety of physical science disciplines. Of particular importance are methods based on direct numerical solutions of Maxwell’s equations of electrodynamics. The first accurate light scattering calculations for spherical particles date back to the pioneering work of Mie and Lorenz (see [1–3] for reviews and perspective). There are many Mie codes available in the public domain; in this work, our basis is a model generated in the 1980s by a Dutch group [4].

For non-spherical particles, there are several methods for computing optical properties; for a review, see [5]. Of these methods, the T-matrix approach first conceived by Waterman [6] has been developed extensively in the last two decades for a huge variety of applications; the

data-base review [7] is useful in this regard. In this work, our starting point is the popular and widely available T-matrix code disseminated by the NASA Goddard Institute for Space Studies (GISS) group [8,9]. Other codes are reviewed in [10]. The NASA-GISS code is applicable to randomly oriented spheroids, circular cylinders and Chebyshev particles. The reader is referred to two papers for details: Ref. [8] presents a review of the theory, while Ref. [9] presents a description of the FORTRAN 77 code for numerical computations.

With changing climate dynamics, it has become important to obtain accurate quantitative information on aerosol optical properties on a global scale [11] from both dedicated ground-based and space-borne instruments [12]. To date, retrievals of aerosol optical thickness are commonplace for many remote sensors. But in the absence of polarimetric measurements, it is difficult to obtain additional information (such as aerosol single scattering albedo) that is important for estimates of aerosol climate forcing. With the recent deployment of polarimetric sensors such as the Research Scanning Polarimeter (RSP) [13], the potential for extending and

* Corresponding author. Tel.: +1 617 492 1183.

E-mail address: rtsolutions@verizon.net (R. Spurr).

improving the retrieval of aerosol parameters to include absorption properties was clearly demonstrated in a number of studies (see for example [14,15]). The recent tragedy of the aborted GLORY Mission [16] has deprived the community of a valuable tool for space-borne aerosol detection. However the RSP instrument will continue to be deployed from air-borne platforms [17].

A 2005 study on GOME-2 measurements [18] demonstrated the feasibility of deriving *microphysical* aerosol parameters (refractive index, size distribution parameters) in addition to the more usual *macrophysical* optical properties such as aerosol extinction and scattering profiles. The retrieval was based on a forward model comprising a linearized vector radiative transfer (RT) code acting alongside a linearized Mie model. The latter generates analytic partial derivatives of optical properties with respect to microphysical aerosol parameters. This type of combination tool is particularly useful for inverse and sensitivity algorithms requiring analytic Jacobians (of atmospheric parameters) in addition to the usual radiation field simulations.

Another study for the OCO instrument used a similar approach [19], this time in connection with the retrieval of XCO₂ columns from the weak and strong CO₂ bands (1.60 and 2.04 μm, OCO also samples the O₂ A band); aerosol characterization is an essential part of this retrieval, given the requirement to obtain CO₂ estimates at 1–3 ppmv accuracy [20]. Rather than overburden the forward model by specifying macrophysical aerosol optical properties in every layer, this study used a parameterized tropospheric aerosol formulation with simple exponential, linear or Gaussian loading profiles, and a handful of microphysical Mie-based aerosol properties. The latter are then retrieved along with the total loading and another parameter (such as the exponential relaxation constant) characterizing the loading profile. This method allows for a better characterization of aerosol uncertainty as a source of forward model error in the CO₂ retrieval.

However, at wavelengths in and around the O₂ A absorption band, the vertical profile of aerosol scattering is important for the accurate simulation of radiance and polarization at top-of-atmosphere [21]. By analogy with UV aerosol retrieval algorithms in which the profile of Rayleigh scattering is used to calibrate the profile of (high-altitude) absorbing aerosols [22], Zeng et al. [21] showed that, for polarization measurements at the O₂ A band, the profile of O₂ absorption may be used to calibrate the profile of scattering aerosols [21].

The increasing need for knowledge of 3D aerosol optical properties for both climate studies and satellite remote sensing applications requires the development of accurate measurements of all Stokes parameters for characterizing aerosol scattering, as well as the development of modeling tools that can rapidly and accurately simulate the sensitivity of the four Stokes parameters of the scattered light to changes in aerosol microphysical parameters. In line with this goal, the present authors have constructed a general tool for aerosol property retrieval based on the linearized VLIDORT polarization RT model [23] and the linearized Mie code outlined in this paper.

It is well known that non-spherical dust particles are omnipresent in the atmosphere, and these have different phase functions compared to those for spherical particles [8]; such differences can lead to significant errors in ground-based or satellite-based retrieval of aerosol optical thickness and other aerosol parameters, as demonstrated by Refs. [24,25], and references therein. Hence, the sensitivity of Stokes parameters to changes of (non-spherical) particle characteristics is important, and this sensitivity can be provided by the combination of VLIDORT and the linearized T-matrix code for the remote sensing of aerosol properties.

The Mie code was linearized independently in [18,26] as well as by one of the present authors [R. Spurr, 2004, unpublished note]. Here we present a new linearization of the T-matrix formulation. For individual particles we show that the T-matrix theory is analytically differentiable with respect to the three microphysical variables—the real and imaginary parts m_r and m_i of the particle refractive index $m_c = m_r + im_i$, and the particle deformation characteristic or shape parameter ε (for spheroids, this is the ratio of the semi-axes; for cylinders, the diameter/height ratio; for Chebyshev particles, the deformation parameter).

In Section 2 we present an overview of the T-matrix formulation, including a definition of the linearization process for the T-matrix itself. In Section 3 we discuss in detail analytic differentiation of the vector spherical functions and integrals over the particle surface areas with respect to m_r , m_i and ε . Section 4 deals with poly-disperse linearizations with respect to parameters characterizing equivalent-sphere particle size distribution. In Section 5, we present some results for extinction and scattering cross-sections and scattering matrices and their linearizations. Section 6 gives a brief digest of the new Fortran 90 computer code for this linearization.

2. Basic definitions and the linearization principle

2.1. Optical properties and linearizations

We consider the scattering of light by spherical particles (Mie) or non-spherical particles with an axis of rotational symmetry. Particles are assumed to be randomly oriented and to scatter independently. The scattering is characterized by the extinction cross-section per particle C_{ext} , the scattering cross-section C_{sca} per particle, and the 4×4 normalized scattering matrix $\mathbf{F}(\Theta)$ for scattering angle Θ [27]. These quantities are ensemble-averaged over all orientations. The absorption cross-section is $C_{abs} = C_{ext} - C_{sca}$, and the single scattering albedo is $\omega = C_{sca}/C_{ext}$.

In the conventional phenomenological description of far-field scattering by a volume element dv , the scattering and incident Stokes 4-vectors \mathbf{I}_{sca} and \mathbf{I}_{inc} are related through

$$\mathbf{I}_{sca} = \frac{1}{4\pi R^2} C_{sca} n_0 dv \mathbf{F}(\Theta) \mathbf{I}_{inc}, \quad (1)$$

where R is the distance to a far-field observation point, and n_0 the particle number density. As noted in recent

work by Mishchenko (see for example [28]), expressions such as (1) are properly valid when certain well-defined conditions are observed, and for this reason we work only with optical properties C_{ext} , C_{sca} and $\mathbf{F}(\Theta)$.

For the particles considered in this paper, $\mathbf{F}(\Theta)$ has the form

$$\mathbf{F}(\Theta) = \begin{pmatrix} a_1(\Theta) & b_1(\Theta) & 0 & 0 \\ b_1(\Theta) & a_2(\Theta) & 0 & 0 \\ 0 & 0 & a_3(\Theta) & b_2(\Theta) \\ 0 & 0 & -b_2(\Theta) & a_4(\Theta) \end{pmatrix}, \quad (2)$$

where there are only six independent quantities (four for Mie scattering). It is convenient (and more efficient) for most applications to use expansions of these F-matrix entries in terms of generalized spherical functions $P_{mn}^l(x)$

$$a_1(\Theta) = \sum_{l=0}^{LM} \alpha_1^l P_{00}^l(\cos \Theta); \quad a_4(\Theta) = \sum_{l=0}^{LM} \alpha_4^l P_{00}^l(\cos \Theta); \quad (3a)$$

$$a_2(\Theta) \pm a_3(\Theta) = \sum_{l=0}^{LM} (\alpha_2^l \pm \alpha_3^l) P_{2,\pm 2}^l(\cos \Theta); \quad (3b)$$

$$b_1(\Theta) = \sum_{l=0}^{LM} \beta_1^l P_{02}^l(\cos \Theta); \quad b_2(\Theta) = \sum_{l=0}^{LM} \beta_2^l P_{02}^l(\cos \Theta). \quad (3c)$$

The (1, 1) entry is the phase function, represented as an expansion in terms of ordinary Legendre polynomials; it is normalized to unity. We note also the asymmetry parameter: $g = 1/3\alpha_1^1$. For more details, see for example [27].

The basic set Ψ of optical properties for a single particle is then

$$\Psi \equiv \{C_{ext}, C_{sca}, \alpha_1^1, \alpha_2^1, \alpha_3^1, \alpha_4^1, \beta_1^1, \beta_2^1\}. \quad (4)$$

For polydisperse ensembles, we must average over the particle size distribution (PSD). If $n(r, \mathbf{v})dr$ is the number of particles in the range $[r, r+dr]$, r_1 and r_2 are the minimum and maximum such radii, and $N(\mathbf{v})$ is the particle number density, then the polydisperse cross-sections $\langle C_{ext} \rangle$, $\langle C_{sca} \rangle$ and the expansion coefficient sets $\langle \gamma_l \rangle$ (where $\{\gamma_l\}$ is one of $\{\alpha_1^l, \alpha_2^l, \alpha_3^l, \alpha_4^l, \beta_1^l, \beta_2^l\}$) are given by

$$C_{ext} = \frac{1}{N(\mathbf{v})} \int_{r_1}^{r_2} C_{ext}(r)n(r, \mathbf{v})dr; \quad C_{sca} = \frac{1}{N(\mathbf{v})} \int_{r_1}^{r_2} C_{sca}(r)n(r, \mathbf{v})dr; \quad (5a)$$

$$\gamma_l = \frac{1}{C_{sca}} \int_{r_1}^{r_2} \gamma_l(r)C_{sca}(r)n(r, \mathbf{v})dr. \quad (5b)$$

Here, vector \mathbf{v} is shorthand for the set of parameters characterizing the PSD; for example $\mathbf{v} = \{r_g, s_g\}$ for a lognormal distribution with mode radius r_g and standard deviation s_g . Integrations are done numerically, usually with Gauss–Legendre quadrature.

Bimodal distributions are common in aerosol retrievals; in this case we have separate sets $\Psi^{(1)}$ and $\Psi^{(2)}$ of monodisperse optical properties, plus associated PSDs $n^{(1)}(r)$ and $n^{(2)}(r)$. Total polydisperse cross-sections and expansion coefficients are given by

$$C_{ext, sca} = fC_{ext, sca}^{(1)} + (1-f)C_{ext, sca}^{(2)}; \quad (6a)$$

$$\gamma_l = \frac{fC_{sca}^{(1)}\gamma_l^{(1)} + (1-f)C_{sca}^{(2)}\gamma_l^{(2)}}{fC_{sca}^{(1)} + (1-f)C_{sca}^{(2)}}. \quad (6b)$$

Here, $f = N^{(1)}/[N^{(1)} + N^{(2)}]$ is the fractional number density corresponding to PSD $n^{(1)}(r)$. Often, the two distributions are of the same form (e.g. both lognormal), and sometimes PSD properties will be shared, e.g. a common lognormal standard deviation but different mode radii [18].

A linearized T-matrix or Mie scattering model will not only produce the above set of properties in Eqs. (4), (5a) and (5b), but also their analytic partial derivatives (i) with respect to the individual-particle microphysical properties m_r, m_i and ε , and (ii) with respect to any member v_k of the set of parameters \mathbf{v} characterizing the PSD. For a bimodal distribution, we also include the partial derivative with respect to the fractional weight f in the second category. Thus, we distinguish two types of analytic derivatives:

Type 1: with respect to single-particle characteristics:

$$\frac{\partial \psi}{\partial m_r}, \frac{\partial \psi}{\partial m_i} \quad (\text{T-Matrix, Mie}); \quad \frac{\partial \psi}{\partial \varepsilon} \quad (\text{T-matrix only})$$

Type 2: with respect to particle size distribution parameters and the fractional weight f :

$$\frac{\partial \psi}{\partial v_k}, \frac{\partial \psi}{\partial f} \quad (\text{T-matrix, Mie})$$

Here, $v_k \in \mathbf{v}$ is any one of the PSD parameters. For spheroids, shape factor ε is the ratio of the two semi-axes (oblate, $\varepsilon > 1$; prolate $\varepsilon < 1$; sphere $\varepsilon = 1$); for cylinders, ε is the diameter to height ratio; for Chebyshev particles, ε is the deformation parameter [29]. Some remarks are in order:

- (1) Mie scattering can be formulated as a special case of the T-matrix theory. It is possible with the NASA-GISS T-matrix code to obtain results for spherical particles to a high degree of accuracy by using a limiting case for spheroidal particles for which ε takes a value very close to 1.0 [9]. In practice, it is better to use a dedicated stand-alone Mie code for applications requiring spherical particle scattering, and there are a number of codes available in the literature. In this paper, we have created a stand-alone linearized Mie package in tandem with the linearized T-matrix model.
- (2) We do not consider derivatives with respect to the equivalent-sphere radius. For a single particle this radius is an input parameter; for polydisperse particles, equivalent-sphere radii are specified through the PSD function. However, when the “equivalent-surface-area-sphere” representation is used in the T-matrix code, it is necessary to calculate the particle surface area and volume. Both these quantities are functions of the shape factor ε , and their derivatives with respect to ε must be factored into the computation of overall optical property derivatives $\partial \psi / \partial \varepsilon$. These additional derivatives are not required for the linearized “equivalent-volume-sphere” representation in the T-matrix code.

(3) For bimodal polydisperse applications, derivatives with respect to the number density fractional weight f are trivial; indeed from Eqs. (6a) and (6b) we find

$$\frac{\partial C_{ext,sca}}{\partial f} = C_{ext,sca}^{(1)} - C_{ext,sca}^{(2)} \quad (7a)$$

$$\frac{\partial \gamma_L}{\partial f} = \frac{[C_{sca}^{(1)} \gamma_L^{(1)} - C_{sca}^{(2)} \gamma_L^{(2)}] - \gamma_L [C_{sca}^{(1)} - C_{sca}^{(2)}]}{f C_{sca}^{(1)} + (1-f) C_{sca}^{(2)}} \quad (7b)$$

2.2. The T-matrix ansatz and its linearization

For electromagnetic scattering by an arbitrary fixed homogeneous object, expressions for the incident, internal and scattered electric fields (\mathbf{E}_{inc} , \mathbf{E}_{par} and \mathbf{E}_{sca} , respectively) in terms of vector spherical wave functions \mathbf{M}_{mn} and \mathbf{N}_{mn} [8] are

$$\mathbf{E}_{inc}(\mathbf{R}) = \sum_{n=1}^{n_{max}} \sum_{m=-n}^n [a_{mn} Rg\mathbf{M}_{mn}(k\mathbf{R}) + b_{mn} Rg\mathbf{N}_{mn}(k\mathbf{R})], \quad (8)$$

$$\mathbf{E}_{par}(\mathbf{R}) = \sum_{n=1}^{n_{max}} \sum_{m=-n}^n [c_{mn} Rg\mathbf{M}_{mn}(m_c k\mathbf{R}) + d_{mn} Rg\mathbf{N}_{mn}(m_c k\mathbf{R})], \quad (9)$$

$$\mathbf{E}_{sca}(\mathbf{R}) = \sum_{n=1}^{n_{max}} \sum_{m=-n}^n [p_{mn} \mathbf{M}_{mn}(k\mathbf{R}) + q_{mn} \mathbf{N}_{mn}(k\mathbf{R})]. \quad (10)$$

Here, \mathbf{R} is the radius vector with origin inside the particle (which has circumscribed radius r_0), k is the wave number and m_c the complex refractive index of the particle (relative to the outside medium). Linearity of Maxwell's theory and the boundary conditions dictates that there must be a linear relationship between the incident $\{a_{mn}, b_{mn}\}$ and scattered $\{p_{mn}, q_{mn}\}$ field coefficients; we express this in terms of the T-matrix \mathbf{T}

$$\begin{bmatrix} \mathbf{p} \\ \mathbf{q} \end{bmatrix} = \mathbf{T} \cdot \begin{bmatrix} \mathbf{a} \\ \mathbf{b} \end{bmatrix} = \begin{bmatrix} \mathbf{T}^{11} & \mathbf{T}^{12} \\ \mathbf{T}^{21} & \mathbf{T}^{22} \end{bmatrix} \cdot \begin{bmatrix} \mathbf{a} \\ \mathbf{b} \end{bmatrix}. \quad (11)$$

Similarly, one may write down linear systems relating the incident and internal fields, and the scattered and internal fields

$$\begin{bmatrix} \mathbf{a} \\ \mathbf{b} \end{bmatrix} = \begin{bmatrix} \mathbf{Q}^{11} & \mathbf{Q}^{12} \\ \mathbf{Q}^{21} & \mathbf{Q}^{22} \end{bmatrix} \cdot \begin{bmatrix} \mathbf{c} \\ \mathbf{d} \end{bmatrix}; \quad \begin{bmatrix} \mathbf{p} \\ \mathbf{q} \end{bmatrix} = - \begin{bmatrix} Rg\mathbf{Q}^{11} & Rg\mathbf{Q}^{12} \\ Rg\mathbf{Q}^{21} & Rg\mathbf{Q}^{22} \end{bmatrix} \cdot \begin{bmatrix} \mathbf{c} \\ \mathbf{d} \end{bmatrix}. \quad (12)$$

Combining (12) and (11), we find

$$\begin{bmatrix} \mathbf{T}^{11} & \mathbf{T}^{12} \\ \mathbf{T}^{21} & \mathbf{T}^{22} \end{bmatrix} = - \begin{bmatrix} Rg\mathbf{Q}^{11} & Rg\mathbf{Q}^{12} \\ Rg\mathbf{Q}^{21} & Rg\mathbf{Q}^{22} \end{bmatrix} \cdot \begin{bmatrix} \mathbf{Q}^{11} & \mathbf{Q}^{12} \\ \mathbf{Q}^{21} & \mathbf{Q}^{22} \end{bmatrix}^{-1},$$

or $\mathbf{T} = -Rg\mathbf{Q} \cdot \mathbf{Q}^{-1}$ (13)

In this expression, matrices $Rg\mathbf{Q}$ and \mathbf{Q} are constructed from vector spherical wave functions that have been integrated over the particle's surface. These spherical functions are products of well-known analytic functions, based on Bessel and Wigner d functions; detailed formulae are given below.

Averaging over orientations is essential for non-spherical particles, and it is here that the analytic nature of the

T-matrix formulation is really useful. The rotational transformation rule for the T-matrix is [30]

$${}^2T_{mm'n'}^{ij} = \sum_{m_1=-n}^n \sum_{m_2=-n'}^{n'} [D_{m_1 m_2}^{n'}(\alpha, \beta, \gamma)]^{-1} T_{m_1 n m_2 n'}^{ij} D_{m m_1}^n(\alpha, \beta, \gamma). \quad (14)$$

Here, $D_{m'm}^n$ are the Wigner D functions, and (α, β, γ) the Euler rotation angles. The pre-suffixes on the T-matrix entries denote coordinate systems 1 and 2. This is an important result; once the T-matrix is known in coordinate system 1, then Eq. (14) allows us to calculate it in any other system. For rotationally symmetric particles, a convenient system takes the z -axis as that for rotation, and in this system the T-matrix has the symmetry relation $T_{mm'n'}^{ij} = \delta_{mm'} T_{mmn'n'}^{ij}$ [30].

We also note the relation $T_{mm'n'}^{ij} = (-1)^{m+m'} T_{-m'-m-n}^{ij}$ which is a consequence of scattering matrix reciprocity [8]. For particles with spherical symmetry, the T-matrix ansatz reduces to

$$T_{mm'n'}^{11} = -\delta_{nn'} b_n; \quad T_{mm'n'}^{22} = -\delta_{nn'} a_n; \quad T_{mm'n'}^{12} = T_{mm'n'}^{21} = 0. \quad (15)$$

Here, a_n and b_n are the usual Lorenz–Mie coefficients.

Eq. (14) is the basis for averaging over particle orientations. For the case of randomly oriented particles and the incident field in the form of a plane electromagnetic wave, the Wigner D -function orthogonality property allows us to derive the following well-known results for the extinction and scattering cross-sections for randomly oriented particles [8]:

$$C_{ext} = -\frac{2\pi}{k^2} \text{Re} \sum_{n=1}^{n_{max}} \sum_{m=-n}^n [T_{mmmm}^{11} + T_{mmmm}^{22}], \quad (16)$$

$$C_{sca} = \frac{2\pi}{k^2} \sum_{n=1}^{n_{max}} \sum_{n'=1}^{n_{max}} \sum_{m=-n}^n \sum_{m'=-n'}^{n'} \sum_{i=1}^2 \sum_{j=1}^2 |T_{mm'n'n'}^{ij}|^2. \quad (17)$$

For computing orientation averages of the scattering matrix expansion coefficients, the approach follows the use of the Clebsch–Gordan expansion for the Wigner d functions [8]. This has proved convenient for the computation of nested sums of T-matrix coefficients; more details in Section 3.1.

We now consider the T-matrix linearization. If x is any of the Type-1 variables (refractive index component, shape factor), then we may differentiate Eq. (13) directly to obtain the derivative T-matrix:

$$\partial \mathbf{T} / \partial x = -\partial [Rg\mathbf{Q}] / \partial x \cdot \mathbf{Q}^{-1} - Rg\mathbf{Q} \cdot \partial [\mathbf{Q}^{-1}] / \partial x \quad (18)$$

Now, since $\mathbf{Q} \cdot \mathbf{Q}^{-1} = \hat{\mathbf{E}}$ (the identity matrix), we find

$$\partial [\mathbf{Q}^{-1}] / \partial x = -\mathbf{Q}^{-1} \cdot \partial [\mathbf{Q}] / \partial x \cdot \mathbf{Q}^{-1} \quad (19)$$

Substituting (19) in (18), we find

$$\partial \mathbf{T} / \partial x = -(\partial [Rg\mathbf{Q}] / \partial x + \mathbf{T} \cdot \partial [\mathbf{Q}] / \partial x) \cdot \mathbf{Q}^{-1}. \quad (20)$$

The major computational task in determining the T matrix is evaluation of the inverse matrix \mathbf{Q}^{-1} ; in the NASA-GISS code, the LAPACK software is deployed for this task. We see in Eq. (20) that the only additional work required for computing the linearized T-matrix is the determination of derivatives of the matrices $Rg\mathbf{Q}$ and \mathbf{Q} .

since \mathbf{Q}^{-1} and \mathbf{T} itself are already available to us. Computation of these derivative matrices will also be dealt with in the next section.

3. Type 1 derivatives for the T-matrix and Mie codes

3.1. Vector spherical wave functions

For the scattered field in Eq. (10), the vector spherical wave functions \mathbf{M}_{mn} and \mathbf{N}_{mn} are given by

$$\mathbf{M}_{mn}(k\mathbf{R}) = (-1)^m d_n h_n^{(1)}(x) \mathbf{C}_{mn}(\vartheta) e^{im\varphi}, \quad x = kR; \quad (21)$$

$$\mathbf{N}_{mn}(k\mathbf{R}) = (-1)^m d_n \left\{ \frac{n(n+1)}{x} h_n^{(1)}(x) \mathbf{P}_{mn}(\vartheta) + \frac{1}{x} \frac{\partial}{\partial x} [x h_n^{(1)}(x)] \mathbf{B}_{mn}(\vartheta) \right\} e^{im\varphi}; \quad (22)$$

$$\mathbf{B}_{mn}(\vartheta) = \hat{\mathbf{9}} \frac{\partial}{\partial \vartheta} [d_{0m}^n(\vartheta)] + \hat{\Phi} \frac{im}{\sin \vartheta} d_{0m}^n(\vartheta); \quad (23a)$$

$$\mathbf{C}_{mn}(\vartheta) = \hat{\mathbf{9}} \frac{im}{\sin \vartheta} d_{0m}^n(\vartheta) - \hat{\Phi} \frac{\partial}{\partial \vartheta} [d_{0m}^n(\vartheta)]; \quad (23b)$$

$$\mathbf{P}_{mn}(\vartheta) = \frac{\mathbf{R}}{R} d_{0m}^n(\vartheta); \quad d_n = \sqrt{\frac{(2n+1)}{4\pi n(n+1)}}. \quad (23c)$$

Hankel functions (of the first type) are $h_n^{(1)}(x)$, and the Wigner d functions are given by

$$d_{lm}^n(\vartheta) = A_{lm}^n (1-\mu)^{(l-m)/2} (1+\mu)^{-(l+m)/2} \frac{d_{lm}^{n-m}}{d_{lm}^{n-m}} (1-\mu)^{n-l} (1+\mu)^{n+l}; \quad (24)$$

$$A_{lm}^n = \frac{(-1)^{n-m}}{2^n} \sqrt{\frac{(n+m)!}{(n-l)!(n+l)!(n-m)!}}. \quad (25)$$

Here, $\mu = \cos \vartheta$. Eq. (24) is valid for $n \geq n_* \equiv \max(|l|, |m|)$; otherwise $d_{lm}^n(\vartheta) = 0$ for $n < n_*$. The relations between the Wigner d and D functions and the generalized spherical functions are

$$D_{mm}^n(\alpha, \beta, \gamma) = e^{-im'\alpha} d_{m'm}^n(\beta) e^{-im\gamma}; \quad d_{lm}^n(\vartheta) = i^{m-l} P_{lm}^n(\cos \vartheta). \quad (26)$$

The orthogonality condition for the Wigner d functions is

$$\int_0^\pi d_{m'm}^n(\beta) d_{m''m}^{n'}(\beta) \sin \beta d\beta = \delta_{n'n} \frac{2}{2n+1}. \quad (27)$$

The orientation averaging proceeds through use of the Clebsch–Gordan expansion:

$$d_{m'm}^n(\beta) d_{m''m}^{n'}(\beta) = \sum_{n_1=|n-n'|}^{n+n'} C_{nm'm_1}^{n_1, m+m_1} C_{n'm''m_1}^{n_1, m'+m_1} d_{m+m_1, m'+m_1}^{n_1}(\beta). \quad (28)$$

For details, see [8,27].

For the fields in Eqs. (8) and (9), the $Rg\mathbf{M}$ and $Rg\mathbf{N}$ functions are obtained by replacing the Hankel functions $h_n^{(1)}(x)$ by Bessel functions $j_n(x)$ and $y_n(x)$. For the interior field (Eq. (9)), we require Bessel functions of complex argument $z \equiv m_c x = (m_r + im_i)x$.

3.2. Linearization of Bessel functions

Bessel functions in the Mie and T-matrix codes are determined by recursion. If x is the (real-valued) radial coordinate kR , then the *downward* recursion for spherical Bessel function $j_n(x)$ is given by

$$F_n(x) \equiv x j_n(x); \quad F_n(x) = G_n(x) F_{n-1}(x), \quad (29a)$$

$$G_n(x) = \left[\frac{2n+1}{x} - G_{n+1}(x) \right]^{-1}; \quad G_{N_1}(x) = 0. \quad (29b)$$

Here, N_1 is the recursion starting value; there are a number of ways of setting this point. We use the specification in [4,8], namely, $N_1(x) = x + 4.05x^{1/3} + 60$. For linearization, there is no dependence on refractive index variables, but x will depend on the particle shape parameter ε if we are using the equivalent-surface-area-sphere (ESAS) representation. Thus we must also consider the linearized recursion

$$F'_n(x) \equiv x' j_n(x) + x j'_n(x); \quad F'_n(x) = G_n(x) F'_{n-1}(x) + G'_n(x) F_{n-1}(x); \quad (30a)$$

$$G'_n(x) = [G_n(x)]^2 \left[G'_{n+1}(x) + \frac{2n+1}{x^2} x' \right]; \quad G'_{N_1}(x) = 0. \quad (30b)$$

Prime indicates derivative $\partial/\partial\varepsilon$. The determination of $\partial x/\partial\varepsilon$ is given in the next sub-section.

Similarly the *upward* recursion for spherical Bessel function $y_n(x)$ is

$$F_n(x) \equiv -xy_n(x); \quad F_{n+1}(x) = \frac{2n+1}{x} F_n(x) - F_{n-1}(x); \quad (31a)$$

$$F_{-1}(x) = \sin x; \quad F_0(x) = \cos x. \quad (31b)$$

In this case, we use N_1 as the recursion finishing point. The linearization with respect to the particle shape parameter ε proceeds in a similar fashion

$$F'_n(x) \equiv -x' y_n(x) - x y'_n(x); \quad (32a)$$

$$F'_{n+1}(x) = \frac{2n+1}{x^2} [x F'_n(x) - x' F_n(x)] - F'_{n-1}(x); \quad (32b)$$

$$F'_{-1}(x) = \cos x; \quad F'_0(x) = -\sin x.$$

For complex-valued Bessel functions, we require a downward recursion similar to Eqs. (29a) and (29b), except in place of particle size parameter x , we have the complex argument $z = (m_r + m_i)x$. For the refractive index linearizations, we then have

$$F'_n(z) \equiv z' C_n(z) + z C'_n(z); \quad F'_n(z) = G_n(z) F'_{n-1}(z) + G'_n(z) F_{n-1}(z); \quad (33a)$$

$$G'_n(z) = [G_n(z)]^2 \left[G'_{n+1}(z) + \frac{2n+1}{z^2} z' \right]; \quad G'_{N_2} = 0. \quad (33b)$$

Here, the prime symbol indicates derivatives $\partial/\partial m_r$ or $i\partial/\partial m_i$. Similar considerations apply to $\partial/\partial\varepsilon$. The recursion start is defined similarly through $N_2(z) = z + 4.05z^{1/3} + 60$.

Mie formulae. In this special case, we can go directly to the Lorentz–Mie a_n and b_n coefficients through the well-known results:

$$a_n = \frac{\left[\frac{K_n(z)}{m_c} + \frac{n}{x} \right] \Psi_n(x) - \Psi_{n-1}(x)}{\left[\frac{K_n(z)}{m_c} + \frac{n}{x} \right] \Phi_n(x) - \Phi_{n-1}(x)};$$

$$b_n = \frac{[m_c K_n(z) + \frac{n}{x}] \Psi_n(x) - \Psi_{n-1}(x)}{[m_c K_n(z) + \frac{n}{x}] \Phi_n(x) - \Phi_{n-1}(x)}, \quad (34a)$$

$$K_n(z) = -\frac{n \Psi_{n-1}(z)}{z \Psi_n(z)}; \quad \Psi_n(x) = x j_n(x); \quad \Phi_n(x) = x [j_n(x) - i y_n(x)]. \quad (34b)$$

Differentiations with respect to m_r and m_i follow directly by chain-rule application of the above formula.

3.3. Surface integral linearization (T-matrix only)

Surface integrals are discussed in detail in [9]; here we summarize key formulas and focus on linearization aspects. For non-spherical particles the radius $r = r(\vartheta, \varphi)$ is a function of angular coordinates ϑ and φ , and we must therefore consider quantities such as

$$\int_S \hat{\mathbf{n}}(r) \cdot \{\mathbf{RgM}_{m'n'}(kr, \vartheta, \varphi) \times \mathbf{M}_{mn}(kr, \vartheta, \varphi)\} dS, \quad (35)$$

when evaluating the T-matrix. These surface integrals are calculated in spherical coordinates, with $\hat{\mathbf{n}}(r)$ the outward normal vector. In general we may write for unit vectors $\{\hat{\mathbf{r}}, \hat{\vartheta}, \hat{\varphi}\}$ [30]:

$$\hat{\mathbf{n}}(r) dS = \left[\hat{\mathbf{r}} - \frac{1}{r} \frac{\partial r}{\partial \vartheta} \hat{\vartheta} - \frac{1}{r \sin \vartheta} \frac{\partial r}{\partial \varphi} \hat{\varphi} \right] r^2 \sin \vartheta d\vartheta d\varphi. \quad (36)$$

In our case with rotationally symmetric particles, there is no azimuth dependence, so that $r = r(\vartheta)$ only and the term for $\hat{\varphi}$ vanishes. Thus we need to evaluate the difference of two integrals:

$$J_r = \int_0^\pi F(r, \vartheta) r^2 \sin \vartheta d\vartheta; \quad J_\vartheta = \int_0^\pi G(r, \vartheta) \frac{\partial r}{\partial \vartheta} r \sin \vartheta d\vartheta. \quad (37)$$

Here $F(r, \vartheta)$ and $G(r, \vartheta)$ are the r and θ components respectively of the kind of cross-product vector terms seen in equations of type (35); exact forms need not concern us here. As noted in [8,30], these integrals are restricted to ranges $[0, \pi/2]$ for particles with a plane of symmetry perpendicular to the rotation axis; for example $r(\pi - \vartheta) = r(\vartheta)$ for spheroids. The integrals in Eq. (37) are done using a double-range Gaussian quadrature scheme $\{-\mu_i, w_i\}$ and $\{+\mu_i, w_i\}$ over the half-range intervals $[-1, 0]$ and $[0, 1]$, respectively, where $\mu = \cos \vartheta$ and $i = 1, 2, \dots, NG/2$. Thus we may write

$$J_r = \int_{-1}^1 F(r, \vartheta) r^2 d\mu \cong \sum_{i=1}^{NG} w_i F(\mu_i) r_i^2; \quad (38a)$$

$$J_\vartheta = \int_{-1}^1 G(r, \vartheta) \frac{\partial r}{\partial \vartheta} r d\mu \cong \sum_{i=1}^{NG} w_i G(\mu_i) \frac{\partial r}{\partial \vartheta} \Big|_i r_i. \quad (38b)$$

These integrals depend on the type of particle. The choice of NG is critical to the convergence of the T-matrix solution; an initial value is chosen such that $NG = LN_{max}$, where L is an integer (dependent on particle choice) and N_{max} is the size of the matrix \mathbf{Q} . For more details, see [9].

Spheroids. The explicit form used here is

$$r(\vartheta) = \frac{\tilde{R}(\varepsilon) \varepsilon^{1/3}}{\sqrt{\sin^2 \vartheta + \varepsilon^2 \cos^2 \vartheta}}; \quad \frac{1}{r} \frac{\partial r}{\partial \vartheta} = \frac{(\varepsilon^2 - 1) \sin \vartheta \cos \vartheta}{\sin^2 \vartheta + \varepsilon^2 \cos^2 \vartheta}; \quad (39)$$

Here, $\tilde{R}(\varepsilon)$ is the equivalent sphere radius, and shape factor ε is the ratio of the vertical and horizontal semi-major axes. For the equivalent volume sphere, $\tilde{R}(\varepsilon)$ is not dependent on ε , but for the equivalent surface-area sphere, this dependency must be accounted for (Section 3.4 below).

Linearization will require differentiation of Eqs. (38) and (39) with respect to the shape factor. Differentiating through the integrals in Eqs. (38a) and (38b) we find

$$\frac{\partial J_r}{\partial \varepsilon} \cong \sum_{i=1}^{NG} w_i r_i \left[r_i \frac{\partial F(\mu_i)}{\partial \varepsilon} + 2F(\mu_i) \frac{\partial r_i}{\partial \varepsilon} \right]; \quad (40a)$$

$$\frac{\partial J_\vartheta}{\partial \varepsilon} \cong \sum_{i=1}^{NG} w_i \left[r_i \frac{\partial r}{\partial \vartheta} \Big|_i \frac{\partial G(\mu_i)}{\partial \varepsilon} + G(\mu_i) \frac{\partial}{\partial \varepsilon} \left(\frac{\partial r}{\partial \vartheta} \Big|_i r_i \right) \right]. \quad (40b)$$

Differentiation of Eq. (39) yields

$$\frac{\partial r(\vartheta)}{\partial \varepsilon} = r(\vartheta) \left[\frac{1}{\tilde{R}(\varepsilon)} \frac{\partial \tilde{R}(\varepsilon)}{\partial \varepsilon} + \frac{1}{3\varepsilon} - \frac{\varepsilon \cos^2 \vartheta}{\sin^2 \vartheta + \varepsilon^2 \cos^2 \vartheta} \right]; \quad (41a)$$

$$\frac{\partial}{\partial \varepsilon} \left(\frac{1}{r} \frac{\partial r}{\partial \vartheta} \right) = \frac{2\varepsilon \sin \vartheta \cos \vartheta}{[\sin^2 \vartheta + \varepsilon^2 \cos^2 \vartheta]^2}. \quad (41b)$$

As noted already, the derivative of $\tilde{R}(\varepsilon)$ in Eq. (41a) will be zero for the equivalent volume sphere.

Cylinders. There are two surfaces here, and the shape factor is now the diameter to height ratio. Then the quadrature is split according to [9]:

$$r(\vartheta) = (2/3)^{1/3} \varepsilon^{1/3} \frac{\tilde{R}(\varepsilon)}{\sin \vartheta}; \quad \frac{1}{r} \frac{\partial r(\vartheta)}{\partial \vartheta} = -\cot \vartheta \quad (\tan \vartheta > \varepsilon); \quad (42a)$$

$$r(\vartheta) = (2/3)^{1/3} \varepsilon^{-2/3} \frac{\tilde{R}(\varepsilon)}{\cos \vartheta}; \quad \frac{1}{r} \frac{\partial r(\vartheta)}{\partial \vartheta} = +\tan \vartheta \quad (\tan \vartheta \leq \varepsilon). \quad (42b)$$

The linearization with respect to ε is easy; the non-zero terms are

$$\frac{\partial r(\vartheta)}{\partial \varepsilon} = r(\vartheta) \left[\frac{1}{\tilde{R}(\varepsilon)} \frac{\partial \tilde{R}(\varepsilon)}{\partial \varepsilon} + \frac{1}{3\varepsilon} \right] \quad (\tan \vartheta > \varepsilon); \quad (43a)$$

$$\frac{\partial r(\vartheta)}{\partial \varepsilon} = r(\vartheta) \left[\frac{1}{\tilde{R}(\varepsilon)} \frac{\partial \tilde{R}(\varepsilon)}{\partial \varepsilon} - \frac{2}{3\varepsilon} \right] \quad (\tan \vartheta \leq \varepsilon). \quad (43b)$$

Chebyshev particles. These particles are generated through continuous deformation of a sphere of radius $r_0 = \tilde{R}(\varepsilon)$ using a Chebyshev polynomial of degree n ; the deformation parameter ε is always less than one:

$$r(\vartheta) = \tilde{R}(\varepsilon) [1 + \varepsilon \cos n\vartheta]; \quad \frac{1}{r} \frac{\partial r(\vartheta)}{\partial \vartheta} = -\frac{\varepsilon n \sin n\vartheta}{1 + \varepsilon \cos n\vartheta}. \quad (44)$$

The linearization with respect to ε is also straightforward

$$\frac{\partial r(\vartheta)}{\partial \varepsilon} = \frac{\partial \tilde{R}(\varepsilon)}{\partial \varepsilon} [1 + \varepsilon \cos n\vartheta] + \tilde{R}(\varepsilon) \cos n\vartheta;$$

$$\frac{\partial}{\partial \varepsilon} \left(\frac{1}{r} \frac{\partial r}{\partial \vartheta} \right) = - \frac{n \sin \vartheta}{[1 + \varepsilon \cos \vartheta]^2}. \quad (45)$$

3.4. Equivalent surface area sphere (ESAS) linearization (T-matrix only)

In this section, we look at the non-zero derivative $\partial \tilde{R}(\varepsilon) / \partial \varepsilon$ which applies in the ESAS representation. In this case, the equivalent sphere radius \tilde{R}_0 (a free parameter that does not depend on the nature of the particle under consideration) must be multiplied by a factor $S(\varepsilon)$ which is related to the particle surface area and volume. Specifically

$$\begin{aligned} \tilde{R}(\varepsilon) &= \tilde{R}_0 S(\varepsilon) \equiv \tilde{R}_0 \frac{E_V(\varepsilon)}{E_A(\varepsilon)}; & E_V(\varepsilon) &= \left[\frac{V(\varepsilon)}{(4/3)\pi} \right]^{1/3}; \\ E_A(\varepsilon) &= \left[\frac{A(\varepsilon)}{4\pi} \right]^{1/2}. \end{aligned} \quad (46)$$

The volume and area functions $V(\varepsilon)$ and $A(\varepsilon)$ are treated separately for the three particle types here. Note that $S(\varepsilon) = 1$ for the sphere.

Prolate spheroids ($\varepsilon < 1$). The volume is $V(\varepsilon) = (4/3)\pi a^2 b$; the surface area and function $S(\varepsilon)$ in (46) are

$$\begin{aligned} A(\varepsilon) &= 2\pi a^2 H(\varepsilon) \equiv 2\pi a^2 \left[1 + \frac{\sin^{-1} \sqrt{1 - \varepsilon^2}}{\varepsilon \sqrt{1 - \varepsilon^2}} \right]; \\ S(\varepsilon) &= \sqrt{2} \varepsilon^{-1/3} H(\varepsilon)^{-1/2}. \end{aligned} \quad (47)$$

Here, we have polar and equatorial radii a and b , respectively, such that $\varepsilon = a/b$. The derivatives are

$$\begin{aligned} \frac{\partial S}{\partial \varepsilon} &= -S \left[\frac{1}{3\varepsilon} + \frac{H'}{2H} \right]; \\ H' &\equiv \frac{\partial H}{\partial \varepsilon} = \frac{-\varepsilon \sqrt{1 - \varepsilon^2} - (1 - 2\varepsilon^2) \sin^{-1} \sqrt{1 - \varepsilon^2}}{\varepsilon^2 (1 - \varepsilon^2)^{3/2}}. \end{aligned} \quad (48)$$

Oblate spheroids ($\varepsilon > 1$). The volume is again $V(\varepsilon) = (4/3)\pi a^2 b$. Functions $A(\varepsilon)$ and $S(\varepsilon)$ are given by

$$\begin{aligned} A(\varepsilon) &= \pi a^2 H(\varepsilon) \equiv \pi a^2 \left[2 + \frac{1}{\varepsilon \sqrt{\varepsilon^2 - 1}} \ln \frac{\varepsilon + \sqrt{\varepsilon^2 - 1}}{\varepsilon - \sqrt{\varepsilon^2 - 1}} \right]; \\ S(\varepsilon) &= 2\varepsilon^{-1/3} H(\varepsilon)^{-1/2}. \end{aligned} \quad (49)$$

Linearization with respect to ε proceeds by analytic differentiation of Eq. (49); this is a straightforward algebraic exercise.

Cylinders. Here, factor ε is the diameter to height ratio. The formulas for this case are particularly simple; the

function $S(\varepsilon)$ and its derivative are given by

$$S(\varepsilon) = \left(\frac{2\varepsilon}{3} \right)^{-1/3} \left(\frac{2 + \varepsilon}{2\varepsilon} \right)^{-1/2}; \quad \frac{\partial S(\varepsilon)}{\partial \varepsilon} = -S(\varepsilon) \frac{(\varepsilon - 1)}{3\varepsilon(2 + \varepsilon)}. \quad (50)$$

Chebyshev particles. Radius $r(\vartheta)$ is given by Eq. (44). To find the surface area and volume, we use a quadrature:

$$A(\varepsilon) = \sum_{i=1}^{NS} w_i [1 + \varepsilon \cos n \vartheta_i] \sqrt{[1 + \varepsilon \cos n \vartheta_i]^2 + 1 + \varepsilon^2 n^2 \sin^2 n \vartheta_i}; \quad (51a)$$

$$V(\varepsilon) = \sum_{i=1}^{NS} w_i \sin \vartheta_i [1 + \varepsilon \cos n \vartheta_i]^2 (\sin \vartheta_i [1 + \varepsilon \cos n \vartheta_i] + \varepsilon n x_i). \quad (51b)$$

Here, the quadrature is $\{x_i, w_i\}$ over the interval $[-1, 1]$, and $x_i = \cos \vartheta_i$. The number of quadrature points $NS = 60$ in the original F77 NASA-GISS code [9]; we have retained this number. Differentiation of Eqs. (51a) and (51b) with respect to the deformation parameter is a lengthy but straightforward exercise.

4. Type 2 derivatives for the T-matrix and Mie codes

For polydisperse applications, we use a range of (equivalent-sphere) particle size distributions present in the Mie code of [4]; details, see Table 5. Suppose $\psi(r)$ is any monodisperse optical property to be integrated over size radius. Then the PSD integrations are done using a series of Gauss–Legendre quadratures $\{r_{kj}, w_{kj}\}, k = 1, \dots, NQ(j)$, one for each block j , where there are NB blocks covering the full range $[r_1, r_2]$

$$\langle \psi \rangle \equiv \frac{1}{N(\mathbf{v})} \int_{r_1}^{r_2} \psi(r) n(r, \mathbf{v}) dr \cong \frac{\sum_{j=1}^{NB} \sum_{k=1}^{NQ(j)} n(r_{kj}, \mathbf{v}) \psi(r_{kj}) w_{kj}}{\sum_{j=1}^{NB} \sum_{k=1}^{NQ(j)} n(r_{kj}, \mathbf{v}) w_{kj}}. \quad (52)$$

If v_q is one of the set \mathbf{v} of (up to 3) parameters characterizing the PSD, then the linearization of Eq. (52) with respect to v_q is

$$\frac{\partial \langle \psi \rangle}{\partial v_q} \cong \frac{\sum_{j=1}^{NB} \sum_{k=1}^{NQ(j)} \frac{\partial n(r_{kj}, \mathbf{v})}{\partial v_q} [\psi(r_{kj}) - \langle \psi \rangle] w_{kj}}{\sum_{j=1}^{NB} \sum_{k=1}^{NQ(j)} n(r_{kj}, \mathbf{v}) w_{kj}}. \quad (53)$$

It is well known that orientation averaging in the T-matrix solutions tends to reduce high-frequency variations, so that it is not necessary to use more than one quadrature block in the PSD integration. Thus for T-matrix polydispersion, $NB = 1$.

One example will suffice to illustrate the PSD linearization process. For the lognormal distribution with

Table 1
Sample finite difference validation.

	Analytic T-matrix Jacobians			Finite-difference T-matrix Jacobians		
	$\mathfrak{J}_{\xi}(C_{ext})$	$\mathfrak{J}_{\xi}(C_{sca})$	$\mathfrak{J}_{\xi}(g)$	$\tilde{\mathfrak{J}}_{\xi}(C_{ext})$	$\tilde{\mathfrak{J}}_{\xi}(C_{sca})$	$\tilde{\mathfrak{J}}_{\xi}(g)$
$\xi = m_r$	1.0228E+01	8.9886E+00	-1.6865E-01	1.0226E+01	8.9872E+00	-1.6857E-01
$\xi = m_i$	1.0343E-02	-6.4536E-01	3.7953E-02	1.0343E-02	-6.4536E-01	3.7953E-02
$\xi = \varepsilon$	-4.8533E-01	-2.8879E-01	-7.7285E-02	-4.8522E-01	-2.8869E-01	-7.7280E-02

parameters r_g (mode radius) and s_g (standard deviation) we have

$$n(r) = \frac{1}{\sqrt{2\pi}r_s} \exp\left[-\frac{(\ln r - \ln r_g)^2}{2s_g^2}\right]; \quad (54a)$$

$$\frac{\partial n(r)}{\partial r_g} = \frac{n(r)}{r_g} (\ln r - \ln r_g); \quad \frac{\partial n(r)}{\partial s_g} = -\frac{n(r)}{s_g} \left[1 - \frac{(\ln r - \ln r_g)^2}{s_g^2}\right]. \quad (54b)$$

Similar results can be established for the gamma, modified-gamma, and power-law distributions commonly found in the literature; in all cases, analytic differentiation of these well known functions is straightforward.

5. Some results

5.1. Finite difference testing

All linearized outputs from the *monomodal* T-matrix code are normalized, that is, if we are seeking a Jacobian with respect to quantity ζ , then the actual output is (say for the extinction coefficient)

$$\mathfrak{J}_\zeta(C_{ext}) \equiv \zeta \frac{\partial C_{ext}}{\partial \zeta}. \quad (55)$$

Given this definition, one way to obtain a finite difference estimate of the derivative is

$$\tilde{\mathfrak{J}}_\zeta(C_{ext}) \cong \frac{C_{ext}(\zeta') - C_{ext}(\zeta)}{\delta}, \quad (56)$$

where the perturbed quantity is $\zeta' = \zeta(1 + \delta)$ for some small number δ . Comparing (55) and (56) allows us to make a finite-difference validation of the analytic weighting functions in a convenient manner. In practice the optimum value of δ will depend on the parameter under consideration; experience with this testing indicates that $\delta = 10^{-4}$ is best for the shape factor and refractive index real part parameters, whereas $\delta = 10^{-3}$ is good enough for the refractive index imaginary part and the PSD parameter derivatives.

Table 1 has examples of finite difference Jacobian validations for the extinction and scattering cross-sections and the asymmetry parameter, with calculations for monodisperse oblate spheroids with $m_r + im_i = 1.42 + 0.005i$, shape factor $\varepsilon = 1.7$, and particle size parameter 12.56; a perturbation $\delta = 10^{-4}$ gives results accurate to the 4th significant figure.

For a single-mode call to the linearized Mie code, all weighting function outputs are unnormalized (absolute derivatives). For the bimodal applications, T-matrix derivatives are normalized and Mie derivatives again unnormalized. The only exception is with fractional number density derivatives $\partial \langle \psi \rangle / \partial f$, which are unnormalized for both codes.

Finally we note that the computer code package has a facility for carrying out this finite difference validation for any type of particle, as well as some coding for testing the new T-matrix Fortran 90 against the old NASA-GISS Fortran 77 package.

5.2. Examples of output

Here we present some sample results, focusing on the linearized optical properties. This section is intended to give a flavor of the kind of output generated by the linearized model; specific retrieval applications are beyond the scope of the present work. In order to give an overview, we have employed color contour plots similar to those for example in [5] (Plates 2.1–2.4). We look at the following situations for randomly oriented rotationally symmetric particles.

In Fig. 1, we look at the extinction cross-section C_{ext} and its two normalized derivatives $m_r \partial C_{ext} / \partial m_r$ and $\varepsilon \partial C_{ext} / \partial \varepsilon$ for oblate and prolate spheroid particles, with incident light at wavelength 0.55 μm and fixed imaginary refractive index component $m_i = 0.005$. Results are plotted for a range of values [0.4, 2.0] for the shape factor ε , and a range [1.1, 1.6] for the real refractive index component m_r . Calculations were done using the equivalent surface area sphere (ESAS) representation. Left panels show results for a monodisperse situation with particle size 1 μm (size parameter ~ 12.56), with the right panels containing results for a polydisperse aggregate characterized by a lognormal PSD with mode radius 0.5 μm and standard deviation 2 μm .

Focusing next on Chebyshev particles in Fig. 2, we look at the extinction cross-section C_{ext} and the single scattering albedo ω (top left and top right, respectively), and their normalized derivatives $m_i \partial C_{ext} / \partial m_i$ and $m_i \partial \omega / \partial m_i$ (middle row) with respect to the imaginary component m_i of the refractive index, and derivatives $\varepsilon \partial C_{ext} / \partial \varepsilon$ and $\varepsilon \partial \omega / \partial \varepsilon$ (bottom row) with respect to the Chebyshev deformation parameter. Incident light has wavelength 0.95 μm and the real part of the refractive index component is fixed at $m_r = 1.33$. Results are plotted for a range of values [0.01, 0.3] for the deformation parameter ε , and a range [0.002, 0.22] for the imaginary refractive index component m_i . Calculations were done using the equivalent surface-area-sphere (ESAS) representation.

In Fig. 3, we return to oblate spheroids, looking this time at angular distributions. Results are shown for monodisperse spheroids with shape factor $\varepsilon = 1.7$ and refractive index $1.42 + 0.008i$, at wavelength 0.443 μm . We look at the normalized scattering matrix element $F_{11}(\Theta)$ and the corresponding degree of linear polarization (in %) $-F_{21}(\Theta)/F_{11}(\Theta)$ (top left and top right, respectively), along with their three derivatives $\varepsilon \partial / \partial \varepsilon$, $m_r \partial / \partial m_r$ and $m_i \partial / \partial m_i$ (rows 2 to 4, respectively). Results are plotted against scattering angle Θ from 0 to 180°, and for a range [0, 20] for the particle size parameter. Calculations are again done using the ESAS representation. The plot for $-F_{21}(\Theta)/F_{11}(\Theta)$ (top right) is closely similar to one of the graphs in Plate 2.1 of [5]. It can be seen that polarization at backscattering angles has large sensitivity to changes of shape factor; this offers the promise for retrieval of particle shape from multi-angle polarization measurements. The sensitivity drops significantly at scattering angle close to 180° for particles with size parameters less than 5; this is also the condition for low polarization.

In Fig. 4, we look at a bimodal aggregate, comprising a dust mode with lognormal polydisperse spheroidal

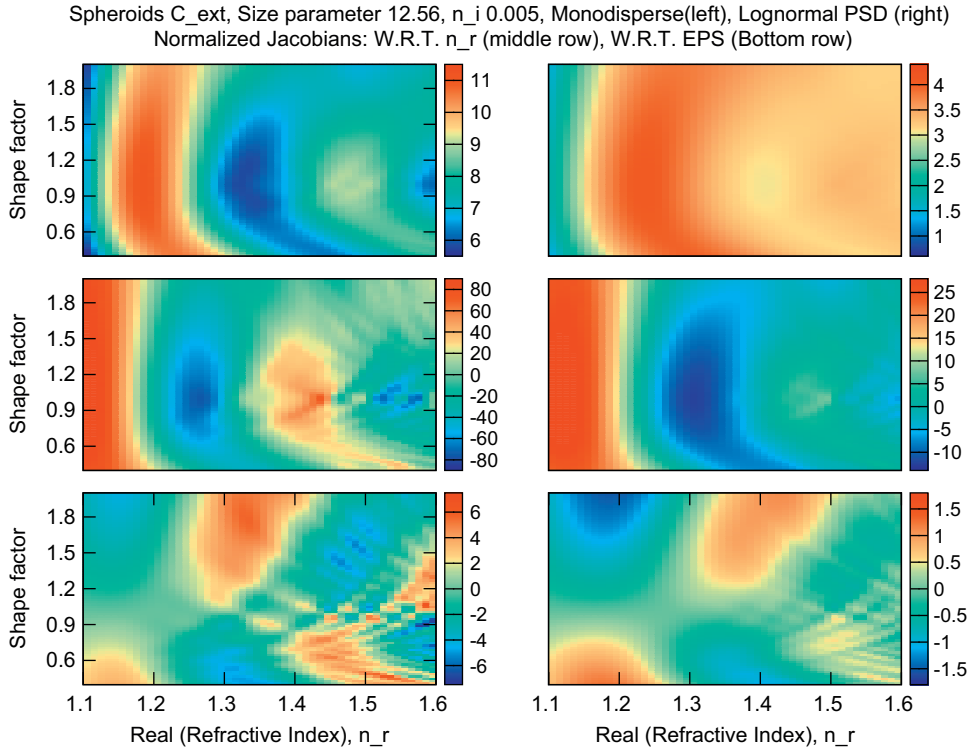


Fig. 1. Spheroid extinction cross-sections C_{ext} (top panels) plus derivatives $m_r \partial C_{ext} / \partial m_r$ (middle panels) and $\epsilon \partial C_{ext} / \partial \epsilon$ (lower panels), contour-plotted against shape factor ϵ and real refractive index component m_r . (Left column) monodisperse particles with size parameter 12.56; (right column) polydisperse lognormal aggregates with mode radius $0.5 \mu\text{m}$ and standard deviation $2 \mu\text{m}$. Fixed imaginary refractive index component $m_i = 0.005$, equivalent surface-area-sphere (ESAS) representation.

particles with $m_c = 1.53 + 0.005i$, and a sulfate mode with lognormal polydisperse spheres of refractive index $m_c = 1.43 + 2 \times 10^{-8}i$. We look at the scattering matrix element F_{11} (plotted on a natural logarithmic scale for convenience) and the degree of linear polarization P_{LIN} (in %) $-F_{21}(\theta)/F_{11}(\theta)$ (first and second rows), along with their sensitivities with respect to the fractional number density weight f of the dust mode (rows three and four). Results are plotted against the fraction of dust for a fixed dust-particle shape factor 1.7 (left column), and against the dust particle shape factor (varying from 0.7 to 2) with a fixed fractional weight of $f = 0.5$ (right column). The sensitivities are here defined as the (normalized) derivatives of the $\text{Ln}(F_{11})$ or P_{LIN} with respect to f . Variations of both F_{11} and P_{LIN} with respect to f (i.e. vertical changes of color in the upper two panels on the left) are much less than their counterparts with respect to shape factor (i.e. color changes in the two upper panels, right column). An overview of the sensitivity of such variations with f and shape factor is seen in the lower two rows of Fig. 4; moreover, P_{LIN} has relatively larger sensitivity to f than F_{11} . Note that, since P_{LIN} is less than 40% (second row in Fig. 4), the normalized relative sensitivity $f \partial [\text{Ln}(P_{LIN})] / \partial f$ is larger than $f \partial P_{LIN} / \partial f$ as shown here. $[f \partial [\text{Ln}(P_{LIN})] / \partial f]$ is not shown here, as P_{LIN} is zero at scattering angles 0° and 180° . Overall, Fig. 4 suggests that, at least for the aerosol parameters specified here, angular polarization is useful for retrieving the fraction of non-spherical large particles [31].

6. Computer codes

The initial-release package of linearized FORTRAN 90 T-matrix and Mie codes may be obtained upon inquiry from the corresponding author; the codes are in the public domain, and when the codes become optimized and better established, it is intended that they will again be available from the GISS website (<http://www.giss.nasa.gov/~crmim>). The F90 T-matrix package is based on the existing NASA-GISS F77 code [9], while the Mie package is based on the Meerhoff code [4]. The new F90 codes are accompanied by a User Guide.

For the T-matrix part of the package, the following remarks apply to the F90 upgrade:

- Most of the original naming conventions in the F77 code have been preserved;
- all subroutines have declared input and output explicitly —no common block storage;
- all code is “implicit none” with explicit declaration of all variables;
- all subroutine I/O has explicit intent (In/Out/InOut) signifiers;
- equivalence statements have been removed;
- code has an explicit exception handling procedure for dealing with program failure;
- dimensioning is symbolic throughout, no allocatable arrays (at least in this version).

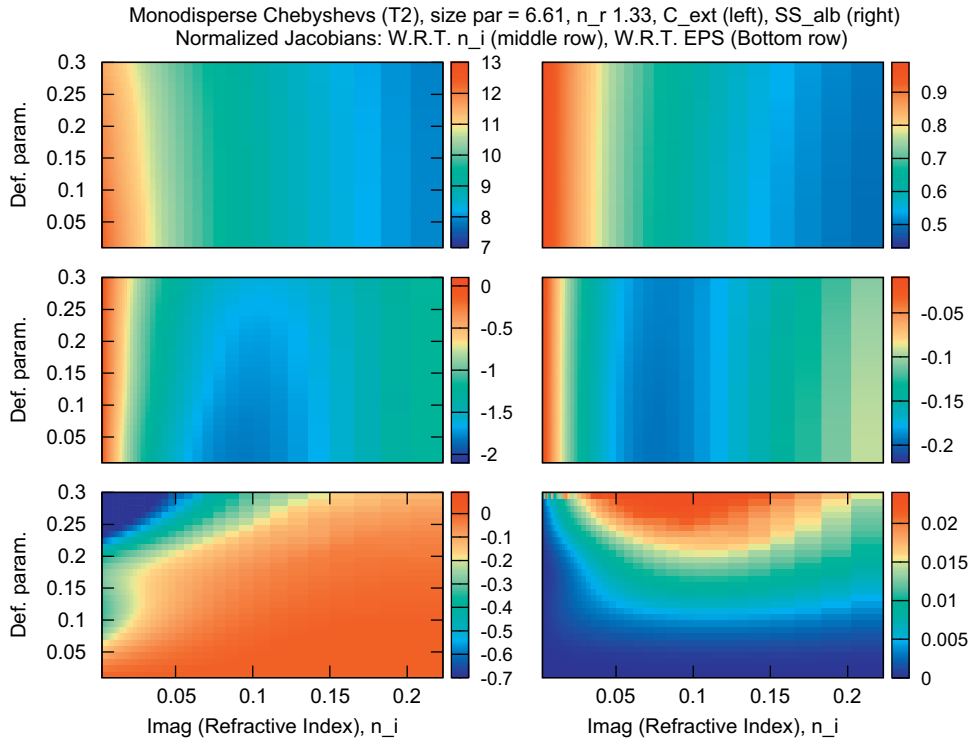


Fig. 2. Extinction cross-sections C_{ext} (top left) and single scattering albedos ω (top right) for monodisperse Chebyshev particles with fixed real refractive index component $m_r = 1.33$ and size parameter 6.61. ESAS calculations were done for a range of deformation parameters [0.01, 0.3] and a range of values of the imaginary component of the refractive index from 0.002 to 0.22. Normalized derivatives $m_i \partial C_{ext} / \partial m_i$ and $m_i \partial \omega / \partial m_i$ are shown in the middle panels, with associated (normalized) deformation parameter derivatives $\varepsilon \partial C_{ext} / \partial \varepsilon$ and $\varepsilon \partial \omega / \partial \varepsilon$ in the lower panels.

The choice of PSD for the F90 T-matrix code has been extended to include all the options present in the Meerhoff [4] code (see Table 5). However, all original PSD specifications from the F77 NASA-GISS code have been preserved, and the user can still choose one of these PSDs by turning on the Boolean flag “Do_PSD_Oldstyle” (see below). This option is useful for validation against the F77 code. Note that the PSD-linearization is only possible with the new-style PSD choices, for which the PSDs were explicitly differentiated as part of the linearized Mie package.

The code has been made more flexible, with a greater range of input choices, now specified by reading from configuration files—an example of this is described in detail below for the T-matrix case. As far as output is concerned, some users may require just the “bulk” optical properties (extinction and scattering cross-sections, single scattering albedo), and in this case, the code calculating the expansion coefficients is turned off. Note however that if the asymmetry parameter is desired, then the expansion coefficient code must be activated. Similarly, in many applications (e.g. when providing optical property inputs for radiative transfer modeling) it is only necessary to compute the bulk quantities and expansion coefficients—thus the F-matrix output for a regular grid of scattering angles is optional.

6.1. Code descriptions

There are two main directories in the package (Fig. 5). The main `Tmatrix_environment` directory contains a

number of “makefiles”, which will generate executables named according to any test programs present. Modules and object files are stored in separate subdirectories to avoid clutter. This directory also contains the configuration files. Results files may also be stored separately. The Mie part of the package is structured similarly.

The complete set of modules to be used in any call to the linearized T-matrix model is found in the other directory `Tmatrix_sourcecode`, which contains the 14 files outlined in Table 2. The Mie code is simpler; all functions (with the exception of the parameters, the bimodal masters and the I/O read and write routine) are contained in the two master modules (Table 3).

6.2. Configuration file example

Table 4 contains an example of a configuration file. Each file is divided into 4 groups. In this particular case, the program will perform a full calculation of bulk properties and expansion coefficients and the F-matrix, using the equivalent surface area sphere (ESAS) representation with a lognormal PSD (new-style) of mode radius $0.5 \mu\text{m}$ and standard deviation $2 \mu\text{m}$, with limiting radii 0.1 and $5 \mu\text{m}$, for oblate spheroids of shape factor 1.7 and refractive index (1.53, 0.005) at wavelength $0.55 \mu\text{m}$. This input will also generate 5 linearizations: weighting functions with respect to the two refractive index components, the shape factor and the two PSD parameters. Similar configuration files have been designed for the

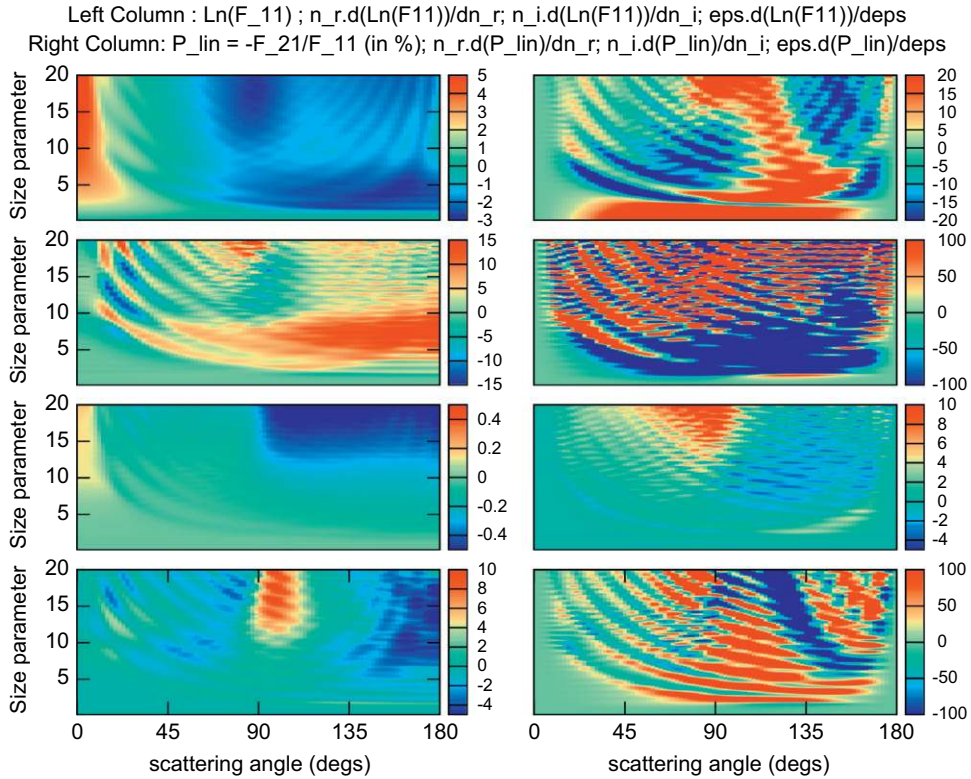


Fig. 3. Logarithm of the (1, 1) scattering matrix element $\text{Ln}(F_{11}(\theta))$ (top left panel); degree of linear polarization (in %) $-F_{21}(\theta)/F_{11}(\theta)$ (top right panel). The three derivatives $m_i \partial / \partial m_r$, $m_i \partial / \partial m_i$ and $\epsilon \partial / \partial \epsilon$ of these quantities are shown in rows 2, 3 and 4, respectively. Results are plotted for monodisperse oblate spheroids ($\epsilon=1.7$, $m_r=1.42$, $m_i=0.008$) against scattering angle θ for a range of particle size parameters as indicated. Calculations were again done in the ESAS representation.

Mie code. In addition, there are configuration files for bimodal applications (requiring two sets of microphysical values and PSD inputs).

6.3. Exception handling

Both the T-matrix and Mie codes have consistent exception handling procedures for dealing with input checking and execution failures. An overall Boolean flag is output for “success/failure”, and there is also an integer status variable plus three character strings for output messages. Inputs are checked for consistency, and in the case of input error, a message will be generated describing the error, plus a second message outlining the action required to correct the error along with 2 or 3 traces to establish the location of the error. Dimensioning and convergence issues are the main causes of T-matrix execution failure, and the appropriate messages from the F77 code have been retained in the F90 package. In both codes, dimensioning checks will suggest new parameters to use.

6.4. Particle-size distributions

Table 5 summarizes PSD options in the T-matrix and Mie packages. For $\text{PSD_Index}=3$ (Old-style power law) and $\text{FixR1R2}=T$, then PSD_Par1 is an effective radius, PSD_Par2 an effective variance.

7. Concluding remarks

In this paper we have described a complete linearization of the T-matrix model as it applies to randomly oriented axially symmetric particles. The linearity of Maxwell’s equations and the intrinsic analytical nature of the T-matrix code allow us to carry out analytic differentiation of the entire T-matrix solution with respect to any variables characterizing the particles in question. We distinguish two types of linearization: (1) with respect to single particle characteristics (real and imaginary components of the refractive index, particle shape or deformation factor), and (2) with respect to particle size distribution parameters characterizing poly-disperse aggregations.

The NASA-GISS T-matrix code package has been translated to Fortran 90, and additional code written to generate the Type 1 and Type 2 optical property derivatives as noted in Section 2.1. The new code has been validated against the old NASA-GISS FORTRAN 77 package, and all optical property derivatives have been checked against finite-difference estimations. We have developed a separate linearization package for the Mie code, even though Mie theory is a special case of the T-matrix formulation. The Type-1 Mie linearization applies only to derivatives with respect to the refractive index components. Type-2 linearizations apply equally to the Mie and T-matrix formulations.

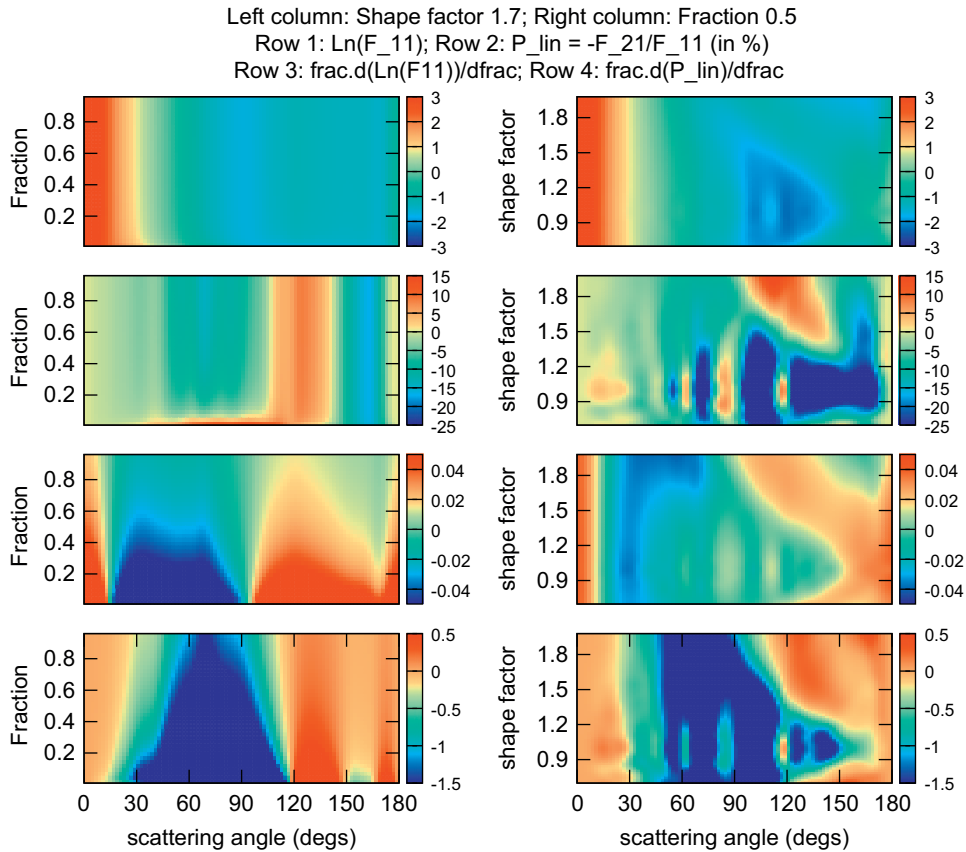


Fig. 4. (First row) Logarithm of the (1, 1) element $\text{Ln}(F_{11}(\theta))$. (Second row) Degree of linear polarization (in %) $P_{LIN} = -F_{21}(\theta)/F_{11}(\theta)$. (Third and fourth rows) Derivatives $f \partial[\text{Ln}(F_{11})]/\partial f$ and $f \partial[P_{LIN}]/\partial f$, where f denotes the dust aerosol volume fraction. Results are for bimodal aerosol particles with a lognormal spherical sulfate mode ($m_r = 1.43$, $m_i = 2 \times 10^{-8}$, $r_g = 0.04$, $\sigma_g = 1.8$) and a lognormal spheroid dust mode ($m_r = 1.53$, $m_i = 0.005$, $r_g = 0.4$, $\sigma_g = 1.8$). Results are plotted against scattering angle θ for a range of dust-mode aerosol number density fraction (from 0.01 to 0.96) with fixed shape factor ($\epsilon = 1.7$) in the left column, and for a range of shape factors (from 0.7 to 2) with fixed dust-mode volume fraction ($f = 0.5$) in the right column. Calculations were again done in the ESAS representation.

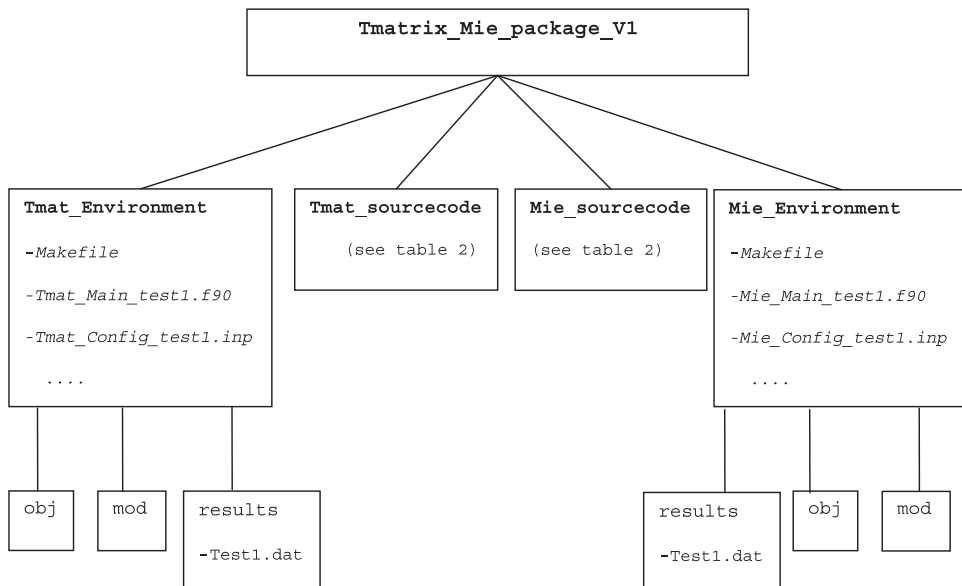


Fig. 5. Directory structure of the linearized T-matrix/Mie package.

Table 2
Subdirectory “Tmatrix_sourcecode”, F90 modules.

Module	Purpose
tmat_parameters.f90	Dimensioning and type-kind parameters
tmat_distributions.f90	Computation of PSDs (old style and new style) and linearizations (new style only)
tmat_master.f90	Top-level module for computing optical property stuff, standard output only
tmat_master_PLUS.f90	Top-level module for computing optical property standard and linearized output
tmat_functions.f90	Work-horse routines for Bessel and other functions
tmat_functions_PLUS.f90	Work-horse routines for Bessel and other functions, and any linearizations thereof
tmat_makers.f90	Routines for creating Q, RgQ and T-matrix
tmat_makers_PLUS.f90	Routines for creating Q, RgQ and T-matrix, and all linearizations thereof
tmat_scattering.f90	Routines for calculating expansion coefficients and F-matrices
tmat_scattering_PLUS.f90	Routines for expansion coefficients and F-matrices, and all linearizations thereof
Utilities_LAPACK.f90	LAPACK routines (F90 syntactical translation of original F77 code)
Tmat_IO_readwrite.f90	Routines for reading configuration files and writing standard and extended outputs to files
Tmat_master_bimodal.f90	Bimodal wrapper, standard output
Tmat_master_bimodal_PLUS.f90	Bimodal wrapper, standard and linearized output

Table 3
Subdirectory “Mie_sourcecode”, F90 modules.

Module	Purpose
Mie_parameters.f90	Mie dimensioning and type-kind parameters
Mie_distribution.f90	PSD distribution functions
Mie_main.f90	Mie module for computing optical properties, standard output only
Mie_main_PLUS.f90	Mie module for computing optical properties, standard+linearized output
Mie_IO_readwrite.f90	Routines for reading configuration files and writing standard and extended outputs to files
Mie_master_bimodal.f90	Bimodal wrapper, standard output
Mie_master_bimodal_PLUS.f90	Bimodal wrapper, standard and linearized output

Table 4
Configuration file example for the T-matrix model.

Value	Name	Description	Remarks
<i>*** First group (Boolean flags)</i>			
T	Do_Expcoeffs	Flag for expansion coefficient output	New feature
T	Do_Fmatrix	Flag for optional F-matrix output	New: Do_Expcoeffs must be set
F	Do_Monodisperse	Flag for a monodisperse calculation	New feature
T	Do_EqSaSphere	Flag for using equivalent surface area sphere (ESAS) representation	Formerly a non-Boolean input
T	Do_LinearRef	Flag for linearizing w.r.t. real and imaginary parts of refractive index	
T	Do_LinearEps	Flag for linearizing w.r.t. shape parameter	
T	Do_LinearPSD	Flag for linearizing w.r.t. PSD parameters	Only works for the “New-style” PSD choices
F	Do_psd_OldStyle	Flag for using original PSD choices	If set, use the NASA-GISS F77 original PSD choices
<i>*** Second group (PSD control)</i>			
4	psd_index	Particle size distribution (PSD) index	See Table 5 for choices
0.5	psd_pars1	First PSD parameter	See Table 5
2.0	psd_pars2	Second PSD parameter	
0.0	psd_pars3	Third PSD parameter	
1.0	Monoradius	Size (µm) of equivalent-sphere particle	Monodisperse only
F	FixR1R2	Flag for fixing R1 & R2 internally	Only if Do_psd_OldStyle not set
0.1	R1	Minimum radius (microns)	Not needed if FixR1R2 is set
1.0	R2	Maximum radius (microns)	Not needed if FixR1R2 is set
<i>*** Third group (General control)</i>			
-1	np	-1(spheroids), -2(cylinder), > 0(Chebyshev)	Same as GISS-F77 options
20	nkmax	Number of PSD quadrature points	Same name as in GISS-F77
91	npna	Number of F-matrix outputs	Same name as in GISS-F77
2	ndgs	Number of ESAS division points	Same name as in GISS-F77
2.0	eps	Aspect ratio, deformation parameter, etc.	Shape parameter
0.001	accuracy	Accuracy for convergence	As in GISS-F77, formerly DELT
<i>*** Fourth group (optical inputs)</i>			
0.5	lambda	Wavelength	Always micrometers
1.53	n_real	Real part of refractive index	
0.008	n_imag	Imaginary part of refractive index	

Table 5
Summary of PSD options.

Old Tmatrix	New Tmatrix/Mie	Description of PSD_Index
4	1	Two parameter GAMMA with ALPHA and B given
	2	Two parameter GAMMA with REFF and VEFF given
	3	3-parameter bimodal equal-weight GAMMAS, 2 REFF, 1 VEFF
2	4	Two parameter LogN with RG and SIGMA given
	5	Two parameter LogN with REFF and VEFF given
3/5	6	Power-law with R1, R2 and ALPHA (=3, old style)
	7	3-parameter modified-gamma with ALPHA,GC,GAMMA given
1	8	3-parameter modified-gamma with ALPHA,B,GAMMA given

At present, the code is restricted to double precision floating point arithmetic; in the next version we plan to allow for a user-specified level of numerical precision (this is a nice F90 feature), so that the code can be run in “extended precision” mode without the need for a separate package as is currently the case with the GISS F77 code. This will extend the usage to particle size parameters in excess of 100. Performance and allocatable-memory optimizations are also planned.

All software in the package is in the public domain; the codes may be downloaded on a trial basis from RT Solutions by contacting the corresponding author. This is the first “beta” version; user feedback will help to consolidate this code and improve portability and robustness, and it is intended that the second release will be made from the NASA GISS website.

The original motivation for the development of this package has come from Earth-atmosphere remote-sensing inverse problems for aerosol retrieval, with the emphasis on retrieving microphysical aerosol characteristics rather than macrophysical optical properties. In this context, the package is best used in conjunction with a linearized radiative transfer model such as VLIDORT; such a combination is then able to deliver forward-model analytic Jacobians necessary for aerosol retrieval problems using least-squares fitting (with or without regularization). T-matrix codes for non-spherical scattering are found in many other atmospheric physics applications as well as diverse fields such as hydrometeor scattering and biomedical applications, and it is hoped that the present code will contain something for everyone.

We note that there is no reason why the linearization process described here cannot be extended to other non-spherical scattering situations using the T-matrix approach (for instance, coated or chiral particles, situations with non-random orientations, etc.). Future work will focus on the linearization of these variants of T-matrix theory, and we will also focus on the generation of Jacobians from distributions of homogeneous spheres.

Acknowledgments

The authors would like to thank Xiong Liu for useful discussions, and Mick Christi for help preparing the package User Guide. This work was funded under the ROSES 2009 NRA (NNH09ZDA001N, ROSES A19 NASA

Glory Science Team). Partial support was provided by the NASA Remote Sensing Theory and Radiation Sciences programs managed by Lucia Tsaoussi and Hal Maring.

References

- [1] van de Hulst HC. Light scattering by small particles. New York: Wiley; 1957.
- [2] Bohren CF, Huffman DR. Absorption and scattering of light by small particles. New York: Wiley; 1998.
- [3] Mishchenko MI, Travis LD. Gustav Mie and the evolving discipline of electromagnetic scattering by particles. *Bulletin of the American Meteorological Society* 2008;89:1853–61.
- [4] de Rooij WA, van der Stap CCAH. Expansion of Mie scattering matrices in generalized spherical functions. *Astronomy and Astrophysics* 1984;131:237–48.
- [5] Mishchenko MI, Hovenier JW, Travis LD. Light scattering by non-spherical particles. San Diego: Academic Press; 2000.
- [6] Waterman PC. Symmetry, unitarity, and geometry in electromagnetic scattering. *Physical Review D* 1971;3:825–39.
- [7] Mishchenko MI, Zakharova NT, Videen G, Khlebtsov NG, Wriedt T. Comprehensive T-matrix reference data-base: a 2007–2009 update. *Journal of Quantitative Spectroscopy and Radiative Transfer* 2010;111: 650–8.
- [8] Mishchenko MI, Travis LD, Mackowski DW. T-matrix computations of light scattering by nonspherical particles: a review. *Journal of Quantitative Spectroscopy and Radiative Transfer* 1996;55:535–75.
- [9] Mishchenko MI, Travis LD. Capabilities and limitations of a current FORTRAN implementation of the T-matrix method for randomly oriented, rotationally symmetric scatterers. *Journal of Quantitative Spectroscopy and Radiative Transfer* 1998;60:309–24.
- [10] Wriedt T. Light scattering theories and computer codes. *Journal of Quantitative Spectroscopy and Radiative Transfer* 2009;110:833–43.
- [11] Solomon S, Qin D, Manning M, Chen Z, Marquis M, Averyt KB, Tignor M, Miller HL, editors. *Climate Change 2007: The Physical Science Basis*. Cambridge: Cambridge University Press; 2007.
- [12] Mishchenko MI, Cairns B, Hansen JE, Travis LD, Burg R, Kaufman YJ, et al. Monitoring of aerosol forcing of climate from space: analysis of measurement requirements. *Journal of Quantitative Spectroscopy and Radiative Transfer* 2004;88:149–61.
- [13] Cairns B, Travis LD, Russell EE. Research scanning polarimeter: calibration and ground-based measurements. *Proceedings of the SPIE* 1999;3754:186–97.
- [14] Mishchenko MI, Travis LD. Satellite retrieval of aerosol properties over the ocean using polarization as well as intensity of reflected sunlight. *Journal of Geophysical Research* 1997;102: 16989–7013.
- [15] Chowdhary J, Cairns B, Mishchenko MI, Hobbs PV, Cota G, Redemann J, et al. Retrieval of aerosol scattering and absorption properties from photopolarimetric observations over the ocean during the CLAMS experiment. *Journal of the Atmospheric Sciences* 2005;62:1093–117.
- [16] Mishchenko MI, Cairns B, Kopp G, Schueler CF, Fafaul BA, Hansen JE, et al. Precise and accurate monitoring of terrestrial aerosols and total solar irradiance: introducing the Glory Mission. *Bulletin of the American Meteorological Society* 2007;88:677–91.
- [17] Waquet F, Cairns B, Knobelspiesse K, Chowdhary J, Travis LD, Schmid B, et al. Polarimetric remote sensing of aerosols over land. *Journal of Geophysical Research* 2009;114:D01206.

- [18] Hasekamp OP, Landgraf J. Linearization of vector radiative transfer with respect to aerosol properties and its use in satellite remote sensing. *Journal of Geophysical Research* 2005;110:D04203.
- [19] Butz A, Hasekamp OP, Frankenberg C, Aben I. Retrievals of atmospheric CO₂ from simulated space-borne measurements of backscattered near-infrared sunlight: accounting for aerosol effects. *Applied Optics* 2009;48:332–6.
- [20] Crisp D, Atlas RM, Breon F-M, Brown LR, Burrows JP, Ciais P, et al. The orbiting carbon observatory (OCO) mission. *Advances in Space Research* 2004;34:700–9.
- [21] Zeng J, Han Q, Wang J. High-spectral resolution simulation of polarization of skylight: sensitivity to aerosol vertical profile. *Geophysical Research Letters* 2008;35:L20801.
- [22] Torres O, Bhartia PK, Herman JR, Ahmad Z, Gleason J. Derivation of aerosol properties from satellite measurements of backscattered ultraviolet radiation, theoretical basis. *Journal of Geophysical Research* 1998;103:17099–110.
- [23] Spurr R. LIDORT and VLIDORT: Linearized pseudo-spherical scalar and vector discrete ordinate radiative transfer models for use in remote sensing retrieval problems. In: Kokhanovsky A, editor. *Light scattering reviews*, vol. 3. Berlin: Springer; 2008 p. 229–75.
- [24] Mishchenko MI, et al. Aerosol retrievals from AVHRR radiances: effects of particle nonsphericity and absorption and an updated long-term global climatology of aerosol properties. *Journal of Quantitative Spectroscopy and Radiative Transfer* 2003;79/80: 953–72.
- [25] Wang J, Liu X, Christopher SA, Reid JS, Reid E, Maring HB. The effects of non-sphericity on geostationary satellite retrievals of dust aerosols. *Geophysical Research Letters* 2003;30:2293.
- [26] Grainger RG, Lucas J, Thomas GE, Ewan G. The calculation of Mie derivatives. *Applied Optics* 2004;43:5386–93.
- [27] Mishchenko MI, Travis LD, Lacis AA. *Scattering, absorption, and emission of light by small particles*. Cambridge: Cambridge University Press; 2002 Available from <<http://www.giss.nasa.gov/staff/mmishchenko/books.html>>.
- [28] Mishchenko MI. Multiple scattering, radiative transfer, and weak localization in discrete random media: unified microphysical approach. *Reviews of Geophysics* 2008;46:RG2003.
- [29] Wiscombe WJ, Mugnai A. Scattering from nonspherical Chebyshev particles. 2: means of angular scattering patterns. *Applied Optics* 1988;27:2405–21.
- [30] Tsang L, Kong JA, Shin RT. *Theory of microwave remote sensing*. New York: Wiley; 1985.
- [31] Dubovik O, Herman M, Holdak A, Lapyonok T, Tanre D, Deuze JL, et al. Statistically optimized inversion algorithm for enhanced retrieval of aerosol properties from spectral multi-angle polarimetric satellite observations. *Atmospheric Measurement Techniques* 2011;4:957–1018.