

University of Groningen

## Lipid droplet autophagy in the yeast *Saccharomyces cerevisiae*

van Zutphen, Tim ; Todde, Virginia; de Boer, Rinse ; Kreim, Martin; Hofbauer, Harald F.; Wolinski, Heimo; Veenhuis, Marten; Klei, Ida J. van der; Kohlwein, Sepp D.

*Published in:*  
Molecular Biology of the Cell

*DOI:*  
[10.1091/mbc.E13-08-0448](https://doi.org/10.1091/mbc.E13-08-0448)

**IMPORTANT NOTE: You are advised to consult the publisher's version (publisher's PDF) if you wish to cite from it. Please check the document version below.**

*Document Version*  
Publisher's PDF, also known as Version of record

*Publication date:*  
2014

[Link to publication in University of Groningen/UMCG research database](#)

*Citation for published version (APA):*

van Zutphen, T., Todde, V., de Boer, R., Kreim, M., Hofbauer, H. F., Wolinski, H., Veenhuis, M., Klei, I. J. V. D., & Kohlwein, S. D. (2014). Lipid droplet autophagy in the yeast *Saccharomyces cerevisiae*. *Molecular Biology of the Cell*, 25(2), 290-301. <https://doi.org/10.1091/mbc.E13-08-0448>

### Copyright

Other than for strictly personal use, it is not permitted to download or to forward/distribute the text or part of it without the consent of the author(s) and/or copyright holder(s), unless the work is under an open content license (like Creative Commons).

The publication may also be distributed here under the terms of Article 25fa of the Dutch Copyright Act, indicated by the "Taverne" license. More information can be found on the University of Groningen website: <https://www.rug.nl/library/open-access/self-archiving-pure/taverne-amendment>.

### Take-down policy

If you believe that this document breaches copyright please contact us providing details, and we will remove access to the work immediately and investigate your claim.

*Downloaded from the University of Groningen/UMCG research database (Pure): <http://www.rug.nl/research/portal>. For technical reasons the number of authors shown on this cover page is limited to 10 maximum.*

# **Supplemental Materials**

*Molecular Biology of the Cell*

Zutphen et al.

## Supplementary figures

**Figure S1. LD formation does not depend on Atg8/LC-3 in yeast.** *atg15*, *atg1* and *atg8* mutant cells were grown in YPD complete media over night (16 h). Lipid droplets were labeled with BODIPY® 493/503 and analyzed by confocal laser scanning microscopy; fluorescence (top) and transmission images (bottom). Scale bar = 5  $\mu$ m.

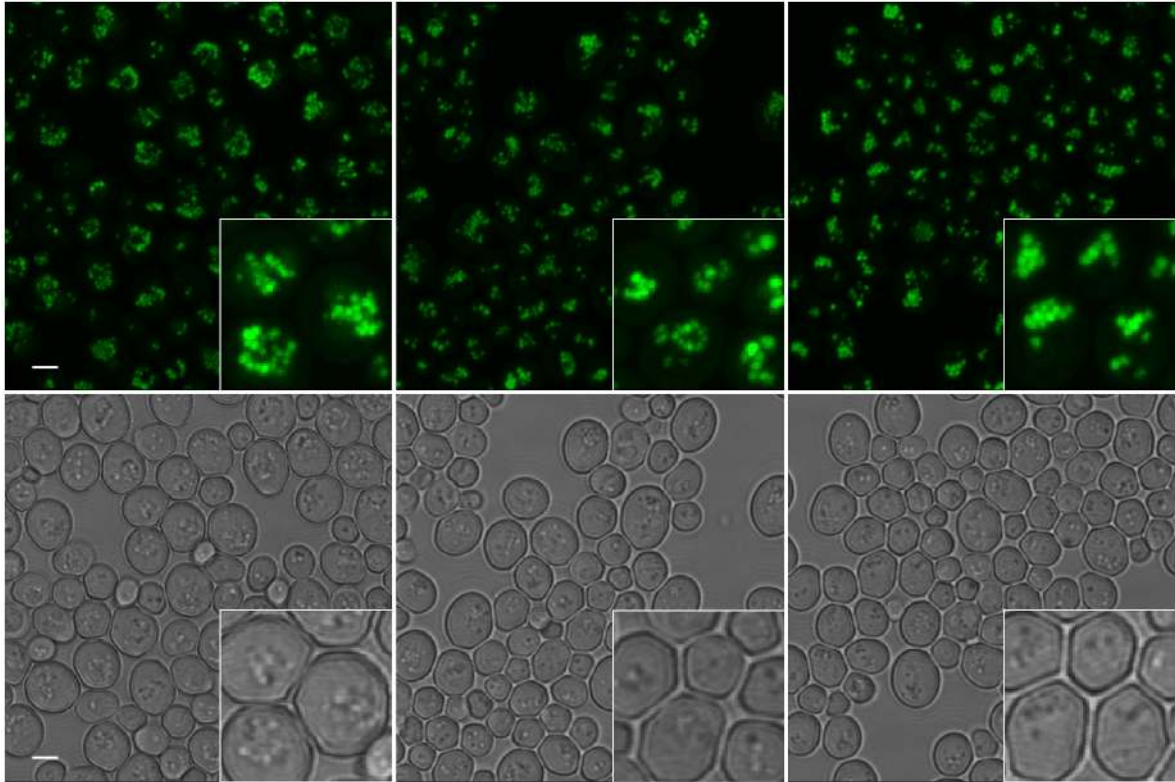
**Figure S2. Internalization of an alternative LD marker, Erg6-GFP requires an identical set of Atg proteins.** Western blots were prepared from crude extracts of the indicated mutant cells that express chromosomally encoded Erg6-GFP that were grown to the late logarithmic growth phase in rich medium and shifted to synthetic minimal medium lacking nitrogen, for 8h. Blots were decorated with anti-GFP and anti-GAPDH antibodies.

Supplementary Figure S1

*atg15*

*atg1*

*atg8*



Supplementary Figure S2

