

# *Listeria monocytogenes* induces IFN $\beta$ expression through an IFI16-, cGAS- and STING-dependent pathway

Kathrine Hansen<sup>1,2</sup>, Thaneas Prabakaran<sup>1,2,†</sup>, Anders Laustsen<sup>1,2,†</sup>, Sofie E Jørgensen<sup>1,2</sup>, Stine H Rahbæk<sup>1,2</sup>, Søren B Jensen<sup>1,2</sup>, Rikke Nielsen<sup>1</sup>, Jess H Leber<sup>3</sup>, Thomas Decker<sup>4</sup>, Kristy A Horan<sup>1</sup>, Martin R Jakobsen<sup>1,2</sup> & Søren R Paludan<sup>1,2,\*</sup>

## Abstract

*Listeria monocytogenes* is a gram-positive facultative intracellular bacterium, which replicates in the cytoplasm of myeloid cells. Interferon  $\beta$  (IFN $\beta$ ) has been reported to play an important role in the mechanisms underlying *Listeria* disease. Although studies in murine cells have proposed the bacteria-derived cyclic-di-AMP to be the key bacterial immunostimulatory molecule, the mechanism for IFN $\beta$  expression during *L. monocytogenes* infection in human myeloid cells remains unknown. Here we report that in human macrophages, *Listeria* DNA rather than cyclic-di-AMP is stimulating the IFN response via a pathway dependent on the DNA sensors IFI16 and cGAS as well as the signalling adaptor molecule STING. Thus, *Listeria* DNA is a major trigger of IFN $\beta$  expression in human myeloid cells and is sensed to activate a pathway dependent on IFI16, cGAS and STING.

**Keywords** innate immunity; interferon beta; *Listeria monocytogenes*

**Subject Categories** Microbiology, Virology & Host Pathogen Interaction

**DOI** 10.15252/embj.201488029 | Received 27 January 2014 | Revised 27 May 2014 | Accepted 28 May 2014 | Published online 26 June 2014

**The EMBO Journal (2014) 33: 1654–1666**

## Introduction

The innate immune system is capable of detecting foreign DNA and triggers early protective responses. In addition, microbial and host DNA may also stimulate activities with pathological consequences for the host (Paludan & Bowie, 2013). More than ten DNA sensors have been proposed and suggested to act in highly cell type-specific manners (Paludan & Bowie, 2013). The proposed DNA sensors include interferon (IFN) inducible 16 (IFI16) and DDX41, but notably cyclic GMP-AMP (cGAMP) synthetase (cGAS)

is now well characterized (Unterholzner *et al*, 2010; Zhang *et al*, 2011; Sun *et al*, 2013). Common to all these proteins is that they stimulate expression of IFN $\beta$  via a pathway proceeding through the protein stimulator of IFN genes (STING), the kinase TBK1 and the transcription factor IFN regulatory factor 3 (Paludan & Bowie, 2013). IFI16 is a member of the PYHIN family of proteins, which also includes AIM2 and murine p204 (Paludan & Bowie, 2013). IFI16 is mainly localized in the nucleus, but a small cellular pool of IFI16 localizes to the cytoplasm through a mechanism controlled by acetylation of the nuclear localization signal in the protein (Li *et al*, 2012). IFI16 is able to directly interact with DNA, and to induce IFN $\alpha/\beta$  expression and inflammasome activation (Unterholzner *et al*, 2010; Kerur *et al*, 2011). DDX41 is expressed in dendritic cells, capable of interacting with DNA, and reported to be involved in early responses to both viral and bacterial infections (Zhang *et al*, 2011). Recently, DDX41 has also been proposed to be a sensor for cyclic dinucleotides (CDNs) (Parvatiyar *et al*, 2012). A major breakthrough in the field of DNA sensing was the identification of cGAS, which upon DNA binding produces the non-canonical CDN 2'3'-cGAMP, a cellular secondary messenger which directly binds STING and stimulates IFN expression (Ablasser *et al*, 2013; Diner *et al*, 2013; Gao *et al*, 2013; Sun *et al*, 2013; Wu *et al*, 2013). The interplay between cGAS and other proposed DNA sensors is still not known.

*Listeria monocytogenes* is an intracellular gram-positive bacteria and the causative agent of listeriosis. Listeriosis usually occurs in the setting of pregnancy, immunosuppression or extremes of age (Barbuddhe & Chakraborty, 2009). *L. monocytogenes* infects a wide range of cell types, including macrophages (Hamon *et al*, 2006). Following phagocytosis by macrophages, *L. monocytogenes* secretes the cytolysin listeriolysin O (LLO) which disrupts the vacuolar membrane (Cossart *et al*, 1989). This allows *L. monocytogenes* to escape into the cytoplasm where replication occurs in the more favourable growth conditions. This step is considered of major

1 Department of Biomedicine, Aarhus University, Aarhus, Denmark

2 Aarhus Research Centre for Innate Immunology, Aarhus University, Aarhus, Denmark

3 Department of Microbiology, The University of Chicago, Chicago, IL, USA

4 Max F. Perutz Laboratories, Department of Microbiology, Immunobiology and Genetics, University of Vienna, Vienna, Austria

\*Corresponding author. Tel: +45 8716 7843; Fax: +45 8619 6128; E-mail: srp@microbiology.au.dk

†These two authors contributed equally to the article

importance since *L. monocytogenes* strains without functional LLO are avirulent.

Following infection of innate immune cells with *L. monocytogenes*, a variety of cytokines, including type I IFNs, are produced. IFN $\alpha/\beta$  induction is important for antiviral defence, but IFNAR $^{-/-}$  mice exhibit increased resistance to *L. monocytogenes* infection, perhaps due to decreased IFN-induced apoptosis in IFNAR $^{-/-}$  macrophages (Stockinger et al, 2002; Auerbuch et al, 2004; Carrero et al, 2004; O'Connell et al, 2004). Studies mainly performed in murine cells have demonstrated that induction of IFN $\alpha/\beta$  and cytokines during *L. monocytogenes* infection is the result of recognition of both bacterial cell wall components by Toll-like receptors (TLR) and additional bacteria-derived molecules by intracellular TLR-independent-sensing mechanisms (Leber et al, 2008; Stockinger et al, 2009; Yang et al, 2010; Abdullah et al, 2012). Cytosolic delivery of DNA derived from *L. monocytogenes* is a potent activator of type I IFN induction (Stetson & Medzhitov, 2006). In addition, CDNs released from *L. monocytogenes* are also potent stimulators of IFN induction (Woodward et al, 2010; Burdette et al, 2011). CDNs are recognized by STING and DDX41 and have been proposed to be major contributors to the induction of IFN during *Listeria* infection in the murine system (Burdette et al, 2011; Sauer et al, 2011; Parvatiyar et al, 2012; Schwartz et al, 2012). However, recent reports indicate that human cells are less responsive to bacterial CDNs than murine cells, due to the differential ability of human and murine STING to bind the 3'5'-linked bacterial CDNs (Ablasser et al, 2013; Conlon et al, 2013; Diner et al, 2013; Gao et al, 2013; Zhang et al, 2013), hence leaving open the question as to how human myeloid cells sense *L. monocytogenes* infection and induce IFN $\alpha/\beta$  expression.

To investigate the role of IFI16, DDX41 and cGAS in the sensing of *L. monocytogenes* DNA, we utilized human primary monocyte-derived macrophages and THP1-derived cell lines generated to stably express shRNAs targeting the proposed sensors. Our results demonstrate that, unlike what has been reported for murine macrophages (Schwartz et al, 2012), induction of IFN $\beta$  expression by human macrophages does not correlate with overexpression of the multidrug efflux pump MdrT, which transports the CDN cyclic-di-AMP into the cytoplasm (Crimmins et al, 2008). In contrast, in these cells, *Listeria* genomic DNA was found to be the major pathogen-associated molecular pattern (PAMP) in *Listeria* extracts and to induce IFN $\beta$  expression in a manner dependent on IFI16, DDX41, cGAS and STING. During *L. monocytogenes* infection, the bacteria-induced IFN $\beta$  response was dependent on IFI16, cGAS and STING, but not DDX41. Confocal microscopy revealed that IFI16 and cGAS associated with synthetic and bacterial DNA in the cytoplasm and also co-localized with STING foci after stimulation with DNA or infection with *L. monocytogenes* but not after treatment with CDNs. Thus, *Listeria* DNA is a major trigger of IFN $\beta$  expression in human myeloid cells and is sensed by IFI16 and cGAS to activate the STING pathway.

## Results

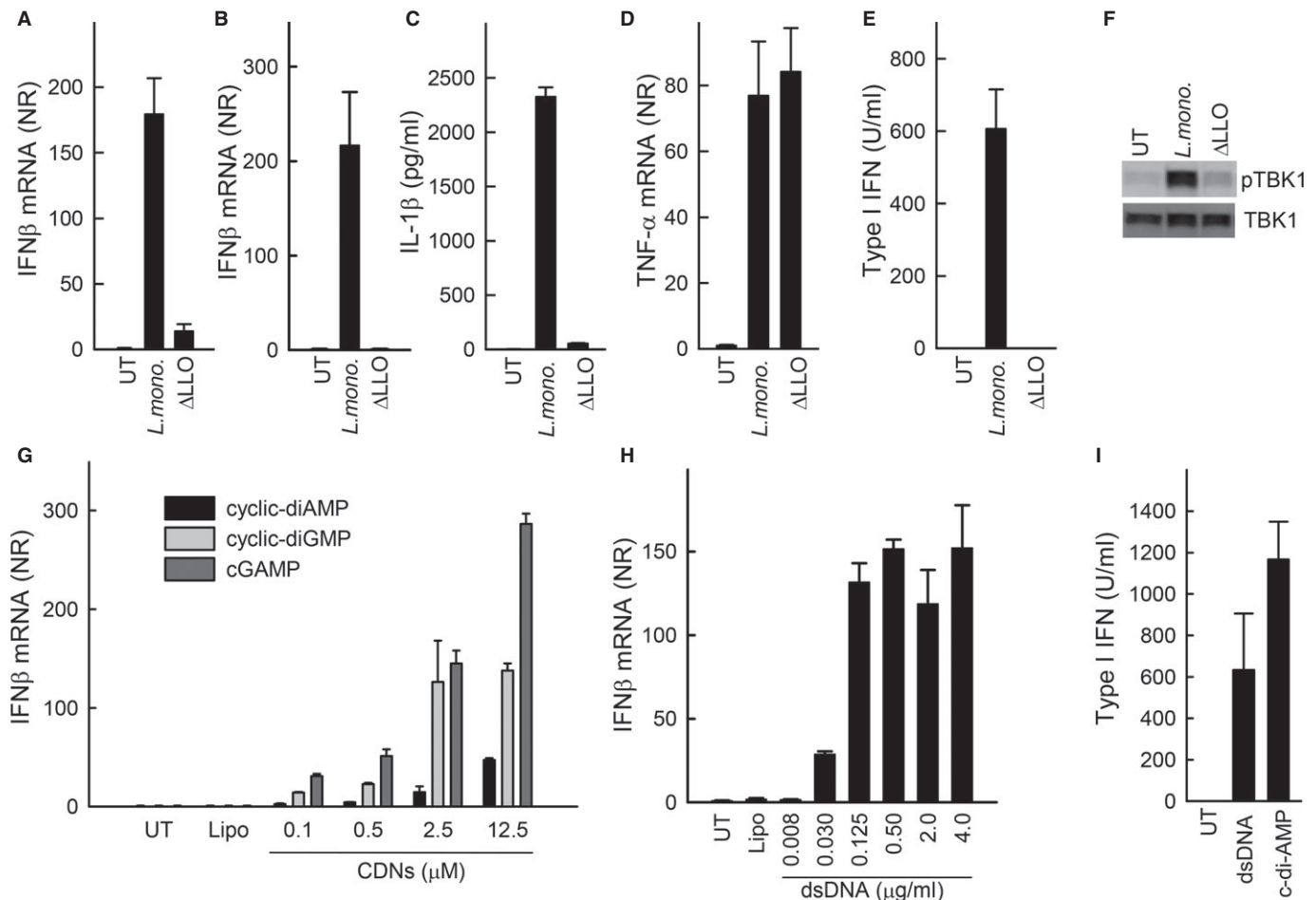
### Induction of IFN $\beta$ expression by *L. monocytogenes* in human myeloid cells

The induction of type I IFN by *L. monocytogenes* infection has been well established (Stetson & Medzhitov, 2006; Stockinger et al,

2002; Woodward et al, 2010). During infection, macrophages are an important producer of IFN $\alpha/\beta$  (Stockinger et al, 2009; Solodova et al, 2011), resulting in apoptosis and ultimately facilitation of bacterial infection (Stockinger et al, 2002; Auerbuch et al, 2004; Rayamajhi et al, 2010). Several studies have demonstrated that both *L. monocytogenes* DNA and CDNs stimulate IFN $\beta$  induction (Burdette et al, 2011; Chan et al, 2006; Parvatiyar et al, 2012; Sauer et al, 2011; Schwartz et al, 2012; Stetson et al, 2006), and it has recently been reported that cGAMP is a second messenger in DNA signalling (Wu et al, 2013). To examine whether THP1 cells responded to *L. monocytogenes*, the cells were infected with increasing amounts of the bacteria, and accumulation of IFN $\beta$  mRNA was measured. We observed a dose-dependent induction of IFN $\beta$  expression between multiplicity of infection (MOI) 1 and 60 (Supplementary Fig S1A), and the expression was not affected by extensive washing of the bacteria prior to infection of the macrophages (Supplementary Fig S1B). IFN $\beta$  mRNA started to accumulate between 2 and 4 h after infection and remained increased for several hours (Supplementary Fig S1C). The bacteria were observed in both vacuoles and the cytoplasm as detected by electron microscopy (Supplementary Fig S1D), and did productively infect the macrophage-like cells (Supplementary Fig S1E). It has previously been reported that *Listeria*-induced type I IFN expression in murine cells is dependent on bacterial escape into the cytoplasm (Leber et al, 2008). As shown in Fig 1A and B, stimulation of IFN $\beta$  expression by *L. monocytogenes* in both human monocyte-derived macrophages (hMDM)s and PMA-differentiated THP1 cells was abrogated if the bacterium was unable to express LLO and hence reach the cytoplasm. Accumulation of IL-1 $\beta$  protein in the culture supernatant was also dependent on bacterial escape into the cytoplasm, whereas TNF- $\alpha$  expression occurred independent of LLO (Fig 1C and D), both findings confirming previous reports (Leber et al, 2008; Sauer et al, 2010). The IFN response was also observed at the level of bioactivity as measured by stimulation of IFNAR-driven gene expression by the culture supernatant (Fig 1E), and induction of the IFN-stimulated genes *CXCL10* and *MxA1* (Supplementary Fig S2A and B). At the level of signalling, infection with wild-type (WT) *L. monocytogenes* but not the LLO-deletion mutant stimulated phosphorylation of TBK1 (Fig 1F), which is essential for induction of type I IFN expression via cytosolic sensing pathways.

Since both DNA and CDNs have been proposed as *Listeria* PAMPs stimulating IFN $\beta$  expression (Burdette et al, 2011; Chan et al, 2006; Parvatiyar et al, 2012; Sauer et al, 2011; Schwartz et al, 2012; Stetson et al, 2006), we wanted to evaluate how PMA-differentiated THP1 cells responded to these stimuli. We found the THP1 cells to respond to CDNs in a dose-dependent manner, with cGAMP stimulation giving rise to the strongest IFN $\beta$  expression, followed by cyclic-di-GMP, and cyclic-di-AMP, which is the CDN produced by *L. monocytogenes*, being the least potent stimulus (Fig 1G). Likewise, the THP1 cells were found to respond potently to dsDNA with a saturated IFN $\beta$  response observed after stimulation with 0.125  $\mu$ g/ml (Fig 1H). Both CDNs and DNA induced IFN bioactivity (Fig 1I).

It has recently been reported that the *L. monocytogenes* strain LO28 used for the experiments presented in Fig 1 naturally overexpresses the multidrug efflux pump MdrT, which correlates with high induction of IFN $\beta$  in murine macrophages (Schwartz et al, 2012).



**Figure 1. IFN $\beta$  induction by *Listeria monocytogenes*, DNA and cyclic dinucleotides (CDNs) in human macrophages.**

A–E Human primary macrophages (A) and PMA-differentiated THP1 macrophages (B–E) were infected with 25 multiplicity of infection (MOI) of WT *L. monocytogenes* or listeriolysin O (LLO)-deficient ( $\Delta$ LLO) *L. monocytogenes* (strain LO28). (A, B, D) The cells were lysed 6 h post-treatment, and total RNA was isolated or (C, E) supernatants were isolated 6 and 18 h post-infection. IFN $\beta$  and TNF- $\alpha$  mRNA, and levels was determined by RT-qPCR, IL-1 $\beta$  protein levels were determined by ELISA (6 h) and type I IFN bioactivity was determined by the HEK-BLUE IFN assay (18 h).

F Lysates from PMA-differentiated THP1 cells treated as indicated for 6 h were subjected to Western blotting with antibodies specific for phospho and total TBK1.

G, H PMA-differentiated THP1 macrophages were transfected with increasing concentration of (G) CDNs or (H) dsDNA. Total RNA was isolated 6 h post-treatment and IFN $\beta$  mRNA levels were determined by RT-qPCR.

I Supernatants from PMA-differentiated THP1 cells stimulated with dsDNA (2  $\mu$ g) or cyclic-di-AMP (12.5  $\mu$ M) for 6 h were analysed for IFN bioactivity.

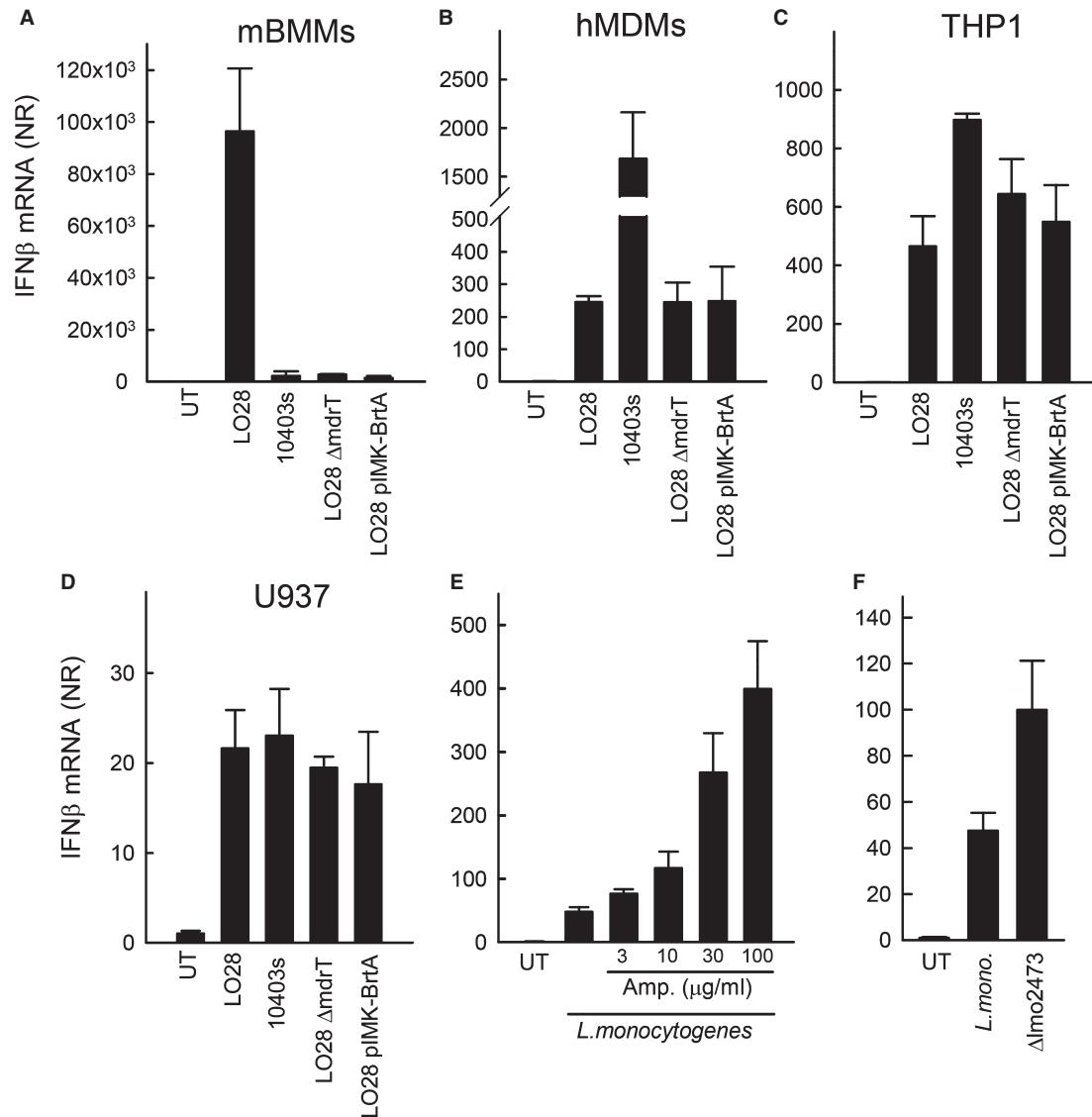
Data information: Data represent mean  $\pm$  SD of duplicates, representative of at least three independent experiments.

By using murine bone marrow-derived macrophages (BMMs), we were able to confirm that the LO28 strain with high MdrT expression induced significantly more IFN $\beta$  than the 10403s strain (Fig 2A). Moreover, in the murine system, LO28 mutants with either a deletion of the chromosomal copy of MdrT or a reintroduction of the TetR family transcriptional repressor BrtA lacking in LO28 lost the ability to potentially induce IFN $\beta$  expression (Fig 2A). Interestingly, in hMDMs, 10403s was a much more potent inducer of IFN $\beta$  expression than LO28, and modulation of MdrT expression in this strain did not alter the ability to activate innate immune responses (Fig 2B and Supplementary Fig S3). In THP1 and U937 cells, bacteria-induced IFN $\beta$  expression was also observed to be independent of MdrT expression (Fig 2C and D).

Previous reports have demonstrated that stimulation of bacteriolysis in the cytosol of macrophages triggers inflammasome signalling

dependent on the DNA sensor AIM2 (Sauer *et al.*, 2010). To test the impact of bacteriolysis in the macrophage cytosol on IFN $\beta$  induction, we evaluated the effect of the  $\beta$ -lactam ampicillin. As shown in Fig 2E, treatment with ampicillin 2 h post-infection led to a dose-dependent elevation in bacteria-induced expression of IFN $\beta$  mRNA. Finally, infection with a *L. monocytogenes* mutant lacking the *lmo2473* gene, and which lyses with increased frequency in the macrophage cytosol (Sauer *et al.*, 2010), induced a stronger IFN $\beta$  response than did the WT bacteria (Fig 2F).

Collectively, these data demonstrate that induction of IFN $\beta$  by *L. monocytogenes* in human myeloid cells, which respond to both DNA and CDNs, is dependent on bacterial escape into the cytoplasm and correlates with bacteriolysis in the cytoplasm, but does not correlate with expression of the efflux pumps MdrT, capable of pumping CDNs into the cytoplasm.



**Figure 2. IFN $\beta$  induction by *Listeria monocytogenes* in human macrophages does not correlate with expression of the multidrug efflux pump MdrT.**

A–D Mouse bone marrow-derived macrophages (BMMs) (A), Human primary monocyte-derived macrophages (B), PMA-differentiated THP1 cells (C) or PMA-differentiated U937 cells (D) were infected with the *L. monocytogenes* strains LO28 and 10403s or LO28 mutants with altered expression of the multidrug efflux pump MdrT (MOI 25).

E PMA-differentiated THP1 cells were infected with *L. monocytogenes* strain LO28 for 2 h and treated with ampicillin in the indicated concentrations.

F PMA-differentiated THP1 cells were infected with *L. monocytogenes* strain 10403s or the derived mutant  $\Delta$ *lmo2473*.

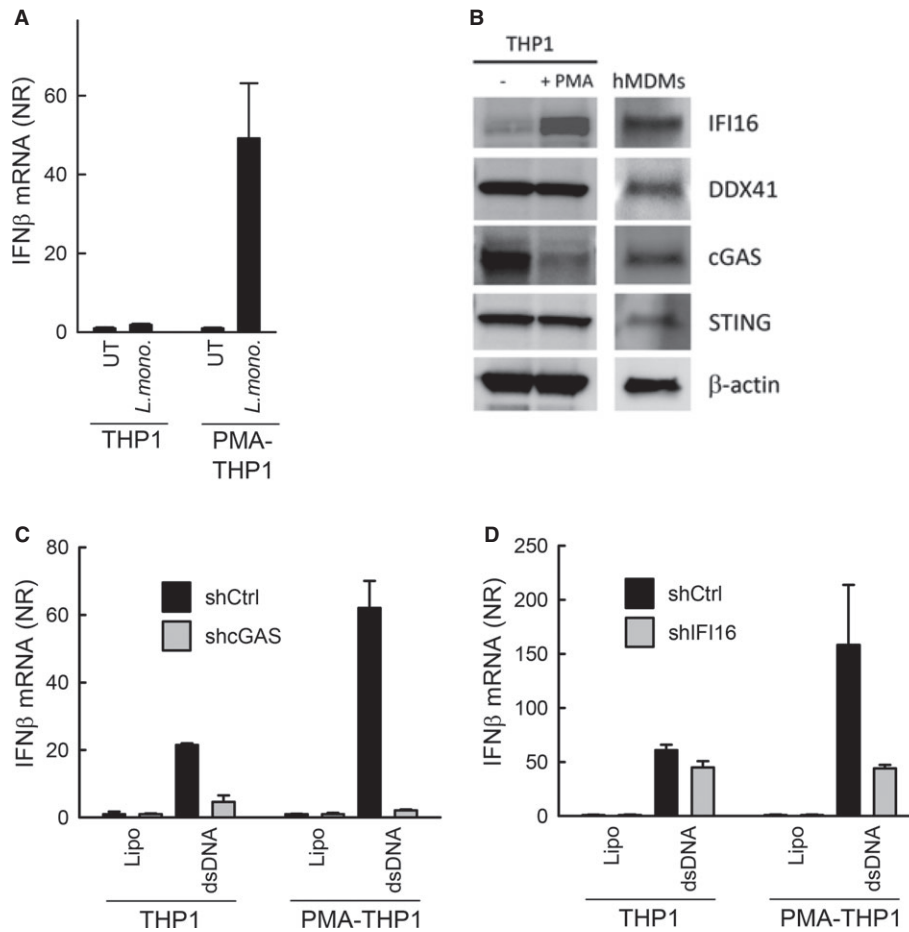
Data information: Total RNA was isolated 6 h p.i. and RT-qPCR analysis for IFN $\beta$  was performed. Data represent mean  $\pm$  SD of duplicates, representative of at least three independent experiments.

### Induction of IFN $\beta$ by *L. monocytogenes* correlates with IFI16 expression

THP1 cells exhibit a monocyte-like phenotype and can be differentiated into a macrophage-like phenotype by treatment with PMA. During the course of these studies, we observed that differentiated THP1 cells respond to DNA with significantly higher IFN $\beta$  expression as compared to undifferentiated THP1 cells (Supplementary Fig S4). Interestingly, when challenging the THP1 cells with *L. monocytogenes*, we found that unlike the PMA-differentiated cells, the undifferentiated cells were unable to produce IFN $\beta$  in response to the

bacterial challenge (Fig 3A). These data indicate that a factor is present in differentiated THP1 cells, which leads to enhanced cellular IFN expression during *L. monocytogenes* infection.

In order to examine the expression of proteins of the DNA/CDN pathway in the cell line and primary cells used in this study, we prepared whole-cell extracts from undifferentiated THP1 cells, PMA-differentiated THP1 cells and hMDMs. The extracts were subjected to Western blotting, and expression of IFI16, DDX41, cGAS and STING was monitored. We observed that DDX41, cGAS and STING were expressed in both cell types (Fig 3B). While expression of DDX41 and STING was not affected by the PMA-differentiation procedure in



**Figure 3. Induction of IFN $\beta$  by *Listeria monocytogenes* infection correlates with expression of IFI16.**

A THP1 cells either undifferentiated or PMA differentiated were infected with *L. monocytogenes* (strain LO28, multiplicity of infection, MOI 25). Total RNA was isolated 6 h p.i. and RT-qPCR analysis for IFN $\beta$  was performed.  
 B Whole lysates from THP1 cells and hMDMs were subjected to Western blotting using antibodies against IFI16, cGAS, DDX41, STING and  $\beta$ -actin.  
 C, D THP1-shCtrl, THP1-shIFI16 and THP1-shcGAS were seeded and either differentiated with PMA or left untreated prior to stimulation with dsDNA (2  $\mu$ g/ml) for 6 h. Total RNA was isolated and IFN $\beta$  mRNA induction was determined by RT-qPCR.

Data information: Data in (A), (C) and (D) represent mean  $\pm$  SD of duplicates, representative of 2–3 independent experiments.

the THP1 cells, the levels of cGAS decreased dramatically during the differentiation procedure (Fig 3B). By contrast, IFI16 was not expressed at significant levels in the undifferentiated THP1 cells, but was expressed in hMDMs and also at high levels in THP1 cells after PMA differentiation (Fig 3B). When examining for the role of IFI16 and cGAS in DNA-driven IFN $\beta$  expression in the parental and PMA-differentiated THP1 cells, we found that cGAS was essential for DNA-driven IFN expression irrespective of the differentiation stage of the cells, despite the pronounced downregulation of cGAS expression in PMA-differentiated cells (Fig 3C). By contrast, a significant role for

IFI16 was seen only in differentiated THP1 cells (Fig 3D). Thus, the expression of IFI16 correlates with the ability of cells to induce IFN $\beta$  expression in response to *L. monocytogenes* infection.

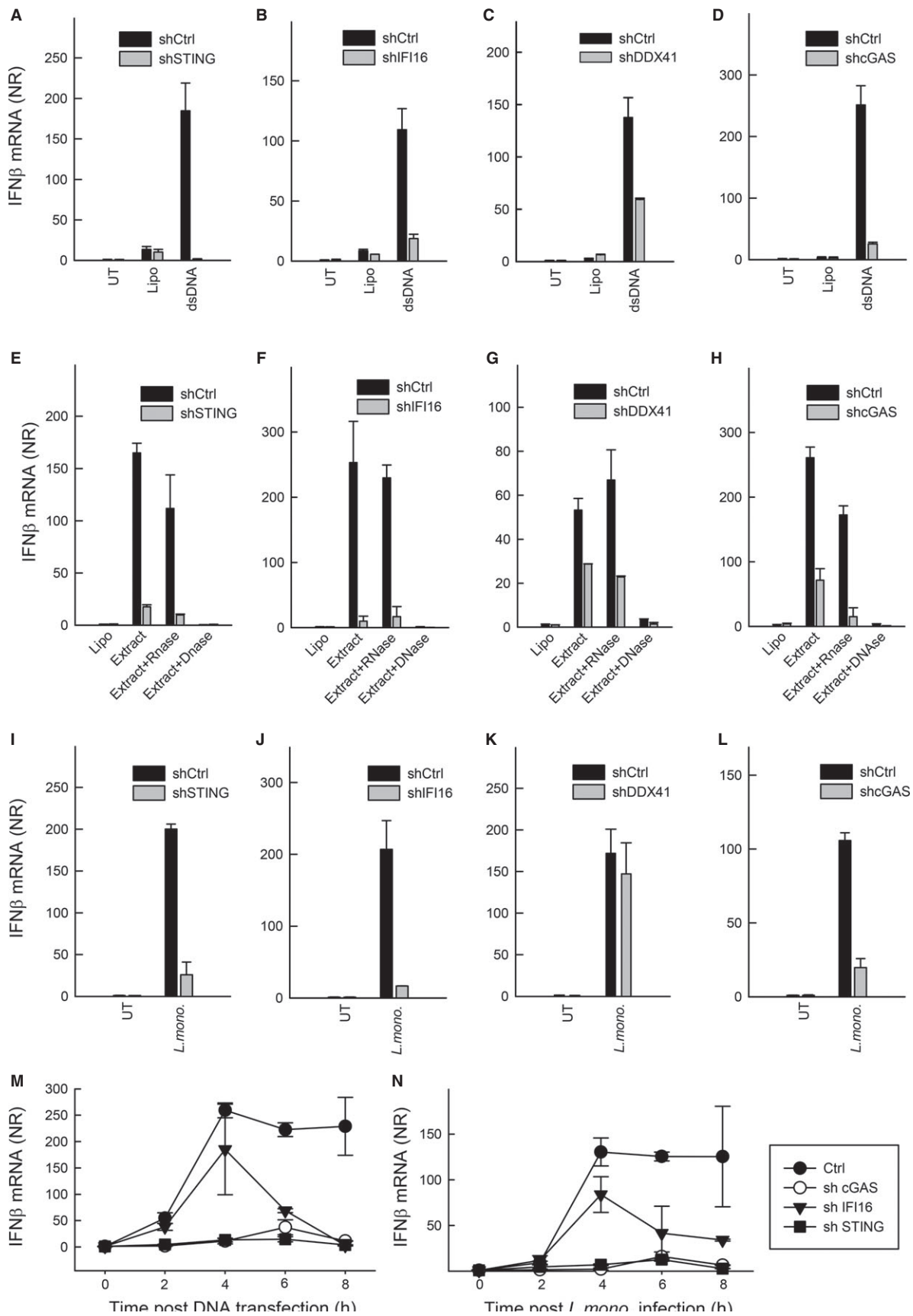
#### IFN $\beta$ induction by bacterial DNA and *L. monocytogenes* infection is dependent on IFI16 and cGAS

*Listeria monocytogenes* DNA can be sensed by the PYHIN family member AIM2, leading to activation of the inflammasome (Rathinam *et al*, 2010; Sauer *et al*, 2010). To investigate the roles for

**Figure 4. IFN $\beta$  induction by *Listeria monocytogenes* extracts is dependent on IFI16, cGAS and STING.**

A–L PMA-differentiated THP1 macrophages transfected with lentivirus-encoding control shRNA or a shRNA sequence targeted to cGAS, IFI16, DDX41 or STING were transfected with dsDNA (2  $\mu$ g/ml) (A–D), *L. monocytogenes* (strain LO28, multiplicity of infection, MOI 25) total extracts or extracts pre-treated with either RNase or DNase (E–H), or infected with *L. monocytogenes* (I–L). The cells were lysed 6 h post-treatment, and IFN $\beta$  mRNA induction was determined by qPCR.  
 M, N The Ctrl and gene-targeted shRNA cell lines were treated with DNA and *L. monocytogenes* as above. Total RNA was harvested at the indicated time points, and IFN $\beta$  mRNA induction was determined by qPCR.

Data information: Data represent mean  $\pm$  SD of duplicates, representative of 2–3 independent experiments.

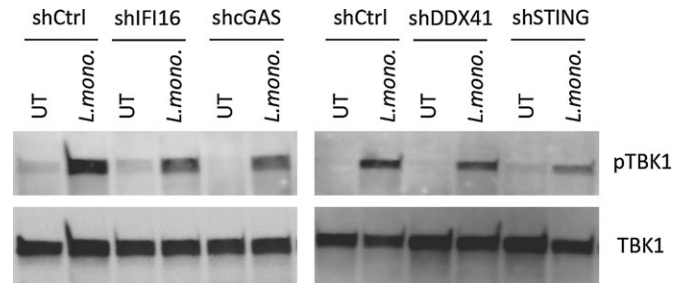


IFI16, DDX41 and cGAS in sensing of *L. monocytogenes* infection, we used previously established THP1 cell lines with stable shRNA-mediated knock-down of these DNA sensors and their downstream adaptor STING (Horan *et al*, 2013; Jakobsen *et al*, 2013). Consistent with a role for IFI16, DDX41, cGAS and STING in DNA-sensing pathways, IFN $\beta$  induction following DNA transfection was impaired in all knock-down cells compared to shCTRL-THP1 (Fig 4A–D) but not in response to Sendai virus infection (Jakobsen *et al*, 2013).

Given the above findings, and the reports on STING and DDX41 being involved in both CDN- and DNA-sensing pathways (Burdette *et al*, 2011; Holm *et al*, 2012; Parvatiyar *et al*, 2012), we were interested in further clarifying Listeria DNA as an IFN-inducing PAMP in human myeloid cells. For this purpose, THP1-shCTRL, THP1-shIFI16, THP1-shDDX41, THP1-shcGAS and THP1-shSTING cells were transfected with *L. monocytogenes* extracts which either had not been further treated, or had been treated with RNase or DNase (Supplementary Fig S5A). Transfection of PMA-differentiated THP1-shCTRL cells with *L. monocytogenes* extracts not treated with nucleases stimulated a robust induction of IFN $\beta$  (Supplementary Fig S5B). This response was not affected by RNase treatment but was abrogated if the extracts had been treated with DNase prior to transfection (Supplementary Fig S5B). Moreover, using an assay for activation of IFN expression by small heat-resistant molecules, previously used as an assay for CDN activity (Wu *et al*, 2013), we found that *L. monocytogenes* extracts did not contain small heat-resistant molecules in concentrations high enough to induce significant IFN $\beta$  expression in PMA-differentiated THP1 cells (Supplementary Fig S5C). Importantly, the IFN $\beta$  response induced by *L. monocytogenes* extracts was largely abrogated in PMA-differentiated THP1-shIFI16, THP1-shcGAS and THP1-shSTING cells, and partly reduced in THP1-shDDX41 cells (Fig 4E–H). Importantly, when challenging the THP1-derived PMA-differentiated cell lines with *L. monocytogenes*, we found that cells with knock-down of IFI16, cGAS or STING, but not cells with knock-down of DDX41 exhibited reduced induction of IFN $\beta$  expression in response to the infection (Fig 4I–L). Despite the lack of a role for DDX41 in *L. monocytogenes*-induced IFN $\beta$  expression, the cells with knock-down of DDX41 did, similarly to cells with knock-down of STING, but unlike the cells with knock-down of IFI16 or cGAS, exhibit reduced IFN $\beta$  expression after stimulation with cyclic-di-AMP (Supplementary Fig S6). Finally, we examined the requirement for cGAS, IFI16 and STING over time in stimulation of IFN $\beta$  expression by DNA or *L. monocytogenes*. For both stimuli, the expression of IFN $\beta$  was dependent on cGAS and STING regardless the time points examined (Fig 4M and N). Interestingly, IFI16 was required for late but not early induction of IFN $\beta$  expression by both DNA and *L. monocytogenes*.

Thus, stimulation of IFN $\beta$  expression by *L. monocytogenes* in human myeloid cells is dependent on IFI16, cGAS and STING, and although we did confirm a role for DDX41 in signalling in response to synthetic DNA and CDNs, expression of this protein was not essential for evoking IFN responses to *L. monocytogenes* infection.

In order to look into the signalling events involved in STING-driven IFN responses, we evaluated the activation of TBK1 in the THP1-derived cell lines with knock-down of IFI16, cGAS, DDX41 or STING. As shown in Fig 5, *L. monocytogenes*-induced phosphorylation of TBK1, which occurs immediately downstream of STING (Tanaka & Chen, 2012), was compromised in cells with reduced expression of IFI16, cGAS or STING but not DDX41.



**Figure 5. *L. monocytogenes* infection in human myeloid cells stimulates phosphorylation of TBK1 in a manner dependent on IFI16, cGAS and STING.**

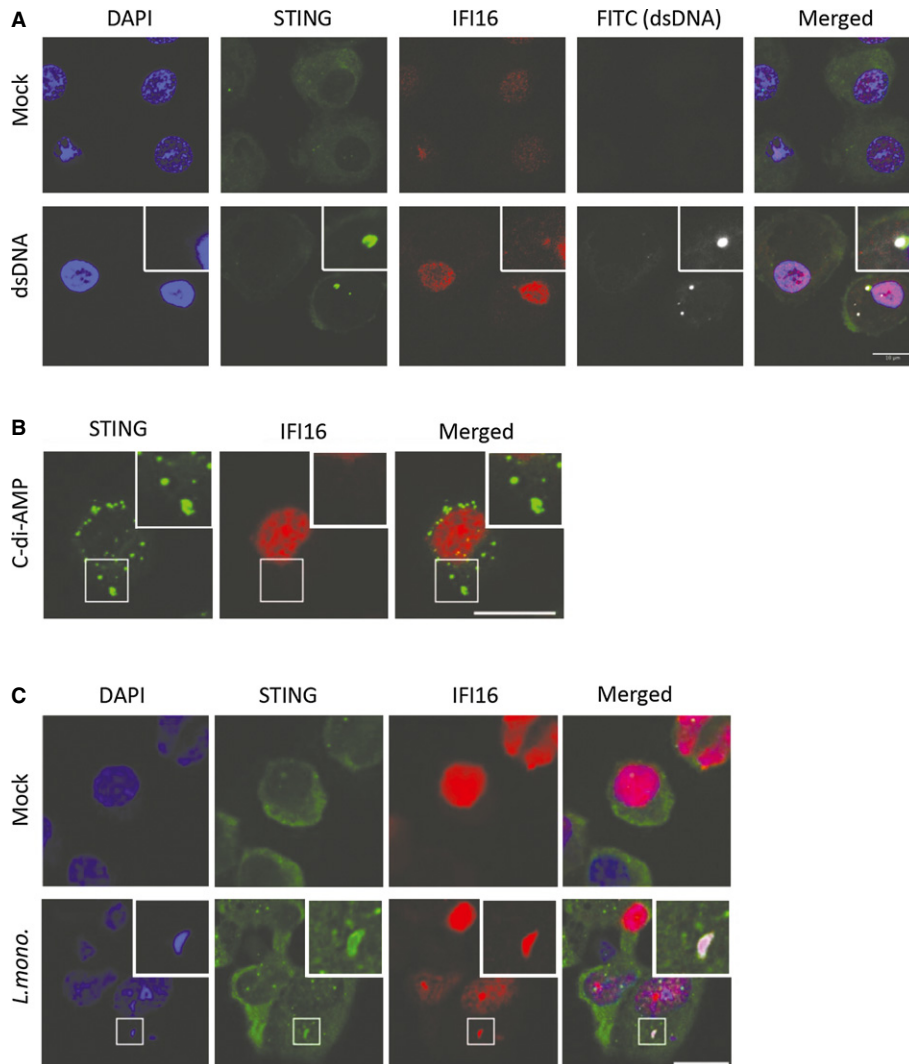
PMA-differentiated THP1 macrophages transduced with lentivirus-encoding control shRNA or a shRNA sequence targeted to cGAS, IFI16, DDX41 or STING were infected with *L. monocytogenes* (strain LO28, MOI 25). Whole-cell lysates were generated 3 h post-infection, and levels of phospho- and total TBK1 were determined by Western blotting.

Cumulatively, these results suggest that IFI16, cGAS and STING are essential for induction of IFN $\beta$  after *L. monocytogenes* infection in human macrophages.

#### IFI16 and cGAS co-localize with DNA in the cytoplasm and are selectively recruited to DNA-activated STING signalsomes

To investigate whether IFI16 engages with DNA and STING, we transfected cells with DNA or c-di-AMP. The macrophages were fixed 4 h post-treatment and stained for IFI16 and STING. In mock-treated cells, IFI16 exhibited a predominantly nuclear distribution, with some diffuse distribution to the cytosol, whilst STING staining was detected widely in the cytoplasm (Fig 6A, upper panels). As reported previously, cytosolic IFI16 relocalized to punctuate structures in DNA-treated cells co-localizing with DNA and STING (Fig 6A). In cells treated with c-di-AMP, we also observed abundant STING foci formation, but IFI16 was not detected in these structures and retained the same staining pattern as in the mock-treated cells (Fig 6B). Following infection with *L. monocytogenes*, DNA could be visualized in the cytoplasm 4 h p.i. utilizing DAPI staining (Fig 6C). Importantly, we observed co-localization between IFI16 and cytosolic DNA, consistent with the role of IFI16 as a DNA sensor. Furthermore, redistribution of STING to the site of bacterial DNA and IFI16 accumulation was observed in the infected cells (Fig 6C). Quantification of STING foci formation above background level revealed that dsDNA transfection led to redistribution of STING in about 50% of cells, c-di-AMP transfection in about 75% of cells and infection with *L. monocytogenes*-induced formation of STING foci in about 30% of cells. When staining for cGAS in cells stimulated with DNA or infected with *L. monocytogenes*, we observed partial co-localization between cGAS and STING (Supplementary Fig S7A), similar to what was observed when staining with anti-IFI16 (Fig 6A). This was not observed after stimulation with c-di-AMP. The redistribution of cGAS was spatially related to the location of both synthetic and bacterial DNA with partial overlap (Supplementary Fig S7B).

All together, these results suggest that the bacterial DNA is the major IFN-inducing PAMP in human macrophages during *L. monocytogenes* infection and this stimulates a pathway dependent on IFI16, cGAS and STING. Furthermore, the data demonstrate a role for IFI16 in relation to the cGAS-cGAMP-STING axis, potentially by



**Figure 6.** IFI16 and STING co-localize with DNA in the cytoplasm after *Listeria monocytogenes* infection.

A–C PMA-differentiated THP1 macrophages were (A) transfected with 2  $\mu\text{g/ml}$  of FITC-labelled dsDNA and (B) 3.6  $\mu\text{M}$  of cyclic-di-AMP, or (C) infected with *L. monocytogenes* (strain LO28, MOI25). Four hours post-treatment, the cells were fixed and stained with anti-IFI16 and anti-STING specific antibodies. DNA was visualized with DAPI (blue).

acting as DNA sensor in the amplification phase of the signalling events eventually leading to the pathological IFN $\beta$  response in *Listeria*-infected individuals.

## Discussion

*Listeria monocytogenes* is an important human pathogen which infects macrophages by escaping from the endosomal environment into the cytoplasm for replication (Cossart *et al*, 1989). The pathology of listeriosis involves excess immune activation, and it has been reported that the type I IFN system is a major player in stimulation of this response (Stockinger *et al*, 2002; Auerbuch *et al*, 2004; Carrero *et al*, 2004; O'Connell *et al*, 2004). Knowledge on how *L. monocytogenes* triggers IFN responses in human macrophages is thus of central importance. It is known that the immune sensing of

*L. monocytogenes* stimulating IFN $\beta$  expression occurs in the cytoplasm (Leber *et al*, 2008), but the *Listeria* IFN-inducing PAMP in human cells and the cellular-sensing pathways involved are not known. While it is well established that the bacterium harbours two potent PAMPs potentially exposed to the cytoplasm, namely genomic DNA and c-di-AMP, largely all published data have been generated in murine systems. Previous work has demonstrated that murine cells respond very potently to bacterial CDNs (McWhirter *et al*, 2009; Jin *et al*, 2011; Sauer *et al*, 2011) and that the ability of *L. monocytogenes* to induce type I IFN correlates with the activity of the multidrug efflux pump MdrT, which transports CDNs into the cytoplasm (Woodward *et al*, 2010; Schwartz *et al*, 2012). However, recent data on the activation of the DNA-dependent STING-TBK1-IRF3 pathway have revealed large differences on activation of human and murine STING by CDNs (Cavlar *et al*, 2013; Conlon *et al*, 2013; Diner



et al, 2013). In this work, we demonstrate that induction of IFN expression by *L. monocytogenes* in human myeloid cells does not correlate with MdrT activity, does correlate with bacteriolysis in the macrophage cytosol, and that bacterial DNA is the most potent IFN-inducing PAMP in bacterial extracts. Moreover, bacterial DNA localized to the cytoplasm during infection and co-localized with IFI16, cGAS and STING. Finally, expression of IFI16, cGAS and STING was essential for bacteria-induced type I IFN expression. Hence, bacterial genomic DNA is the predominant IFN-inducing PAMP in human myeloid cells during *L. monocytogenes* and triggers the host response through a pathway dependent on IFI16, cGAS and STING (Supplementary Fig S8).

A key finding of the present work is the identification of DNA as the main IFN-inducing PAMP in human myeloid cells during *L. monocytogenes* infection, as opposed to the key role for bacterial CDNs in murine cells. One likely explanation for this is that human STING is less responsive to bacterial CDNs with 3'5' linkage and binds the endogenous 2'3'-cGAMP with more than 500 times higher affinity than cyclic-di-GMP (Zhang et al, 2013). However, based on the existing literature, it cannot be excluded that other factors may also contribute to explanation of the present findings. This idea is at least partly supported by the fact that THP1 STING differs from reference human STING at four positions including an arginine at position 232 as opposed to a histidine in reference STING, and consequently displays a responsiveness to 3'5'-linked CDNs which is intermediary between murine STING and reference human STING (Diner et al, 2013). In addition, mice do not have a clear IFI16 orthologue, and given the data presented in this work, it is possible that IFI16 is essential to achieve full responsiveness to DNA. Alternatively, human cells may be more efficient than murine cells in the process of sensing and degrading bacterial components in the cytoplasm, hence allowing exposure of DNA to immune sensors. Randow and associates have recently described cytosolic systems that detect bacteria to stimulate their degradation (Thurston et al, 2009). Similarly, this laboratory has reported that sensing of herpesvirus DNA in the cytoplasm requires a cytoplasmic system to sense and degrade the viral capsid (Horan et al, 2013). Finally, it is also possible that the bacteria actively expose its DNA to the host cytoplasm for its own benefit and do so more efficiently in human cells. This phenomenon has been described for *Mycobacteria tuberculosis*, which uses the ESX-1 secretion system to achieve this (Manzanillo et al, 2012).

About a dozen of DNA sensors have been proposed (Paludan & Bowie, 2013), and IFI16, DDX41 and cGAS have been reported to stimulate a signalling pathway dependent on STING (Unterholzner et al, 2010; Zhang et al, 2011; Sun et al, 2013). It has been discussed as to whether the proposed DNA sensors act in cell type-dependent manners or whether they act in concert to induce IFN responses (Paludan & Bowie, 2013). In this study, we found that undifferentiated THP1 cells express high amounts of cGAS and DDX41 but only very little IFI16, whereas differentiated THP1 cells express high amounts of IFI16 and DDX41 but less cGAS. hMDMs expressed all three proposed DNA sensors at high levels. Interestingly, we found that *L. monocytogenes* infection induced IFN $\beta$  expression only in the differentiated THP1 cells and the hMDMs, hence correlating with expression of IFI16. Moreover, we found that IFI16 co-localized with cytosolic DNA and STING foci in *L. monocytogenes*-infected cells. When testing for the role of DNA sensors in driving IFN $\beta$  repression in PMA-differentiated THP1 cells infected

with *L. monocytogenes*, we found IFI16 and cGAS to be essential, whereas knock-down of DDX41 did not affect this response, although a partial role for DDX41 was found after stimulation with synthetic DNA. Therefore, in a cell type expressing IFI16, DDX41 and cGAS, reduction of the levels of particularly IFI16 or cGAS significantly reduced IFN expression induced by either synthetic DNA or genomic bacterial DNA. These data argue against the DNA sensors acting in cell type-dependent pathways, but rather that they act in concert to stimulate the STING-TBK1-IRF3 pathway. In this respect, it was interesting to observe IFI16 to be essential for sustained but not initial IFN $\beta$  expression, and that both cGAS and IFI16 co-localize with STING after stimulation with DNA but not with c-di-AMP. These data could suggest a role for IFI16 in amplification of cGAS-dependent DNA-driven immune responses. At present, a molecular explanation for IFI16 how works in DNA-driven IFN responses remains to be provided, although a structural explanation of how DNA binding exposes the signalling pyrin domain has been reported (Jin et al, 2012). With the present identification of the requirement for both IFI16 and cGAS in DNA-driven IFN responses in PMA-differentiated THP1 cells, there is an urgent need to understand the interplay between these two proteins, including whether IFI16 acts upstream of, parallel to, or downstream in the cGAS pathway, and also to resolve the potential temporal aspect of the requirement for IFI16 in DNA-stimulated innate immune responses. DDX41, which was first described to be a DNA sensor, has subsequently been demonstrated to bind CDNs and stimulate the STING pathway (Zhang et al, 2011; Parvatiyar et al, 2012). Together with the knowledge on cGAS producing the STING-activating endogenous CDN 2'3' cGAMP upon DNA binding (Sun et al, 2013; Wu et al, 2013), it is tempting to speculate that DDX41 acts in the DNA-stimulated pathway by amplifying STING activation at the level of cGAMP.

In conclusion, we demonstrate that bacterial genomic DNA is the main PAMP inducing IFN $\beta$  expression during *L. monocytogenes* infection in human myeloid cells and that this proceeds through a pathway dependent on both of the two DNA sensors IFI16 and cGAS as well as the downstream adaptor molecule STING (Supplementary Fig S8). The present work raises questions concerning the mechanistic interplay between IFI16 and cGAS in the innate DNA-sensing pathway, and also points towards a molecular understanding of *Listeria* bacteriolysis as being important for further understanding of the immune-pathological mechanisms of listeriosis.

## Materials and Methods

### Ethics statement

C57BL/6 mice were bred and maintained under specific pathogen-free conditions in the animal facilities at the University of Aarhus in accordance with the national guidelines for animal care and use. The animals were sacrificed by cervical dislocation and used to generate bone marrow-derived cells. Human macrophages were generated from monocytes purified from buffy coats collected at Aarhus University Hospital Blood bank from anonymous donors. Ethics approval was granted from the ethical committee of County of Central Jutland (permission no. M-20110199).

## Cells

THP1 and U937 cells (ATCC) were cultured as non-adherent monocyte-like cells in normal growth media (RPMI containing 10% FCS, 600 µg/ml glutamine, 200 IU/ml penicillin and 100 µg/ml streptomycin (Gibco)). THP1 and U937 cells were differentiated into macrophage-like cells by addition of 150 and 50 nM Phorbol 12-myristate 13-acetate (PMA) (Sigma-Aldrich), respectively. Differentiation of BMMs was achieved by culture of murine bone marrow cells for 7 d in the presence of granulocyte-macrophage colony-stimulating factor (Sigma-Aldrich), and harvest of adherent cells as previously described (Rasmussen *et al*, 2011). Differentiation of human monocytes into hMDMs was achieved by culture for 6–8 days in the presence of macrophage colony-stimulating factor (Sigma-Aldrich) as previously described (Horan *et al*, 2013). The HEK-BLUE IFN $\alpha/\beta$  reporter cell line (InvivoGen) was cultivated in Dulbecco's modified Eagle medium (DMEM) supplemented with 10% foetal bovine serum (FBS) and selection markers.

## shRNA-mediated silencing

The lentiviral shRNA expression plasmid pLKO.1 was utilized for the studies described here (OpenBiosystems, Huntsville, AL). Cell lines with stable knock-down of STING, IFI16, cGAS and DDX41 were generated as described previously (Horan *et al*, 2013; Jakobsen *et al*, 2013). The targeting shRNA sequence was IFN-inducible protein 16 (IFI16) clone ID TCRN0000019079; stimulator of IFN genes (Sting) clone ID TCRN000163296; Sting clone ID TCRN0000161345; dead box helicase 41 (Ddx41) clone ID TRCN0000104013; and cyclic GMP-AMP synthase (cGAS) clone ID TRCN0000146282. The control shRNA vector was empty-vector pLKO.1 with an 18-nt shuttle sequence instead of the hairpin sequences. The transduced cells were under selection with puromycin (1 µg/ml), and resistant cells were used for experiments, hence generating polyclonal cell populations. Efficiency of knock-down was verified by Western blot analysis with specific antibodies utilizing  $\beta$ -actin as a loading control, and was performed for all thawed cell lines prior to use in experiments. The cells were used for experiments not more than 1 month after thawing.

## Bacteria

The bacteria used were WT *L. monocytogenes* strain LO28 and the LLO-deletion mutant (Kocks *et al*, 1992), 10403s serotype 1/2a, 10403s  $\Delta$ lmo2473, LO28 serotype 1/2c, LO28  $\Delta$ mdrT and LO28<sup>+</sup> pIMK<sup>-</sup> (Sauer *et al*, 2010; Schwartz *et al*, 2012). For propagation of bacteria, single colonies were inoculated into 5 mL of BHI (brain–heart infusion) media and incubated overnight at 37°C without shaking. Optical density of the culture was measured at 600 nm. An OD<sub>600</sub> of 1.0 were considered equivalent to approximately  $2 \times 10^9$  CFU/ml. THP1-macrophage-like cells were infected with a MOI 1–60, in normal growth media, without penicillin and streptomycin. One hour after infection, the medium was replaced by medium containing 50 µg/ml gentamycin (Sandoz, Cat.no. 010256) to kill extracellular bacteria. After another hour, the medium was once more replaced to now contain 10 µg/ml gentamycin. For qPCR analysis, cells were lysed 6 h p.i. and RNA extracted utilizing a Roche RNA extraction kit, according to manufacturer's instructions,

or cells were fixed 4 h p.i. for confocal as described in the following section.

## Preparation of and stimulation with *L. monocytogenes* extracts

*Listeria monocytogenes* 5-ml overnight cultures were pelleted, resuspended in 400 µl PBS and sonicated for 2 min with cooling using Diagenode Bioruptor BCD-200. Cleared extracts were prepared and left untreated or treated with RNase (100 µg/ml) or DNase (100 unit/ml) for 45 min as described (Stetson *et al*, 2006). For transfection of THP1-macrophage-like cells, 5 µl of *L. monocytogenes* extracts were complexed with 2 µl of Lipofectamine 2000 (Invitrogen) and transfected into THP1 cells according to manufacturer's instructions. Six h p.i. cells were lysed and RNA extracted as described above.

## *L. monocytogenes* growth assay

THP1 cells ( $3.5 \times 10^6$ ) were plated in monolayer on 12-mm round coverslips in 60-mm petri dishes containing 5 ml of medium supplemented with 150 nM PMA. After overnight incubation, the medium was replaced with PMA-free medium, and the cells were left to incubate overnight. The cells were infected with  $10^6$  bacteria per petri dish for 1 h, and the cell monolayer was washed three times with 37°C PBS followed by addition of preheated media supplemented with 10 µg/ml gentamycin. After the indicated time points, the cells were lysed by placing coverslips in duplicate in 5 ml of sterile distilled water. Tubes were vortexed for 30 s and dilutions were plated onto BHI agar plates. After overnight incubation at 37°C, the number of colonies was counted and number of colonies per coverslip was calculated.

## Electron microscopy

The cells were washed twice in PBS and fixed in 2% glutaraldehyde in 0.1 M sodium cacodylate buffer, pH 7.2 overnight at 4°C. Subsequently, the cells were washed in 0.1 M cacodylate buffer, pH 7.2 and embedded in 2% agarose. This was followed by post-fixation in 1% osmium in 0.1 M cacodylate buffer, pH 7.2 for 60 min, washed as above and subsequently in maleate buffer, pH 5.2. The agarose embedded cells were *en bloc* stained with 0.5% uranylacetate in maleate buffer for 60 min. The cells were washed again, dehydrated in graded alcohols, transferred to propylene-oxide  $3 \times 10$  min, followed by overnight incubation in 50% propyleneoxide and 50% Epon (TAAB, Berkshire, England) and finally infiltrated with Epon. Sections with a thickness of 50–70 nm were cut for electron microscopy with a Reichert Jung Ultracut E microtome. The sections were stained with saturated uranyl acetate for 10 min and Pb-citrate for 2 min. Ultrastructural analysis was performed with a Phillips 100 CM electron microscope.

## Transfection with CDNs

For transfection of THP1 cells (either undifferentiated or PMA-differentiated) with cyclic-di-AMP, cyclic-di-GMP or 3'/5' cyclic-GMP-AMP, 2 µl of Lipofectamine 2000 were complexed with cyclic-di-AMP following the instructions of the manufacturer for

DNA transfection. Transfections were performed according to manufacturer's instructions to reach final concentrations of 3.6–50  $\mu\text{M}$  as specified in for the individual data set. Six hours post-transfection, cells were lysed and RNA extracted as above or cells were fixed for confocal as described in the following section.

### Assay for activation of IFN pathway by CDNs

*Listeria monocytogenes* extracts were centrifuged at 65,000  $g$  for 15 min, the supernatants were treated with DNase, heated to 95°C for 5 min and centrifuged at 12,000  $g$  for 5 min. Supernatants were collected.  $1.5 \times 10^5$  PMA-differentiated THP1 cells were stimulated with 20  $\mu\text{l}$  of c-di-AMP in the indicated concentrations, heat-resistant supernatants from *L. monocytogenes* extracts (in the presence or absence of spiking with synthetic c-di-AMP) in 300  $\mu\text{l}$  of a digitonin-based permeabilization buffer (50 mM HEPES, pH 7, 100 mM KCl, 3 mM  $\text{MgCl}_2$ , 0.1 mM DTT, 85 mM sucrose, 0.2% BSA, 1 mM ATP) containing 10  $\mu\text{g}/\text{ml}$  digitonin. After incubation at 37°C for 30 min, the permeabilization buffer was replaced by RPMI with 10% FCS and L-Glutamine and the cells were incubated for another 4 h at 37°C. Expression of IFN $\beta$  and  $\beta$ -actin was measured by RT-qPCR.

### Western blotting

Whole-cell extracts were denatured in XT Sample buffer and XT Reducing Agent and subjected to SDS-PAGE (Bio-Rad). IFI16 was detected with mouse anti-IFI16 (sc-8023, Santa Cruz), DDX41 rabbit anti-DDX41 (SAB-2100554, Sigma-Aldrich), cGAS with rabbit anti-MB21D1 (Sigma-Aldrich), STING with mouse anti-STING (MAB7169, R&D Systems), phosphor-TBK1/NAK (rabbit mAb #3504S, Cell Signaling), anti-TBK1/NAK (rabbit mAb #5483S, Cell Signaling) and  $\beta$ -actin with anti- $\beta$ -actin-HRP (Ab9900, Abcam). Secondary antibodies used were peroxidase-conjugated F(ab')<sub>2</sub> donkey anti-mouse IgG (H+L) and peroxidase-conjugated Affinipure F(ab')<sub>2</sub> donkey anti-rabbit IgG (H+L) (both from Jackson Immuno-Research).

### IFN bioassay

The presence of bioactive human type I IFN in supernatants from cells was measured using the HEK-Blue IFN $\alpha/\beta$  reporter cell line (InvivoGen). The cell line expresses a fully active type I IFN pathway, generated through stable transfection of hSTAT2 and *IRF9* genes into HEK293 cells. Furthermore, it harbours a reporter gene, expressing the secreted embryonic alkaline phosphatase (SEAP), under the control of the IFN-inducible ISG54 promoter. Detection of released type I IFN was performed according to the manufacturer's recommendations. Briefly, 50,000 HEK-BLUE cells were added to 80  $\mu\text{l}$  of supernatant in a 96-well plate. After 24 h of incubation at 37°C, 20  $\mu\text{l}$  of supernatants from HEK-BLUE cells were added to 180  $\mu\text{l}$  Quanti-Blue reagent (InvivoGen). The colorimetric reaction was measured at 620 nm and presented as means of biological triplicates (U/ml)  $\pm$  SD.

### ELISA for IL-1 $\beta$

Levels of IL-1 $\beta$  protein were measured by ELISA (DY201-05, R&D Systems). Instructions of the manufacturer were followed.

### RT-PCR and primers

Gene expression was determined by real-time PCR, using TaqMan detection systems (Applied Biosystems). Expression levels were normalized to  $\beta$ -actin expression and data presented as the fold induction over untreated controls for each phenotype. Data represent the mean  $\pm$  SD from biological replicates. IFN $\beta$ , Applied Biosystems TaqMan Assay Hs01077958\_s1;  $\beta$ -actin, Applied Biosystems TaqMan Assay Hs99999903\_m1; CXCL10, Applied Biosystems TaqMan Assay Hs00171042\_m1; MxA1, Applied Biosystems Taqman Assay Hs00895608\_m1, TNF- $\alpha$ , Applied Biosystems Taqman Assay Hs01113624\_g1.

### Confocal microscopy

For visualization of IFI16, following infection with bacteria at indicated times, cells were fixed and permeabilized with methanol at  $-20^\circ\text{C}$  and labelled with antibodies against IFI16 (N-terminal, Santa Cruz sc-8023) or STING (Imgenex IMG-6485A). For visualization of IFI16 and STING following transfection with cyclic-di-AMP, and for all staining for cGAS, THP1 cells were fixed with 4% formaldehyde and permeabilized with 0.2% Triton X-100. The antibodies used were rabbit anti-cGAS (HPA031700 SIGMA, Anti-MB21D1) and sheep anti-STING (R&D Systems, AF6516). Images were acquired on Zeiss LSM 710 confocal microscope, using a 63 $\times$  1.4 oil lens. Image processing was performed using Zen 2010 (Zeiss) and ImageJ.

### Statistical analysis

The data are shown as mean  $\pm$  SD. The statistical significance was determined by two-tailed Student's *t*-test or Wilcoxon rank sum test.

**Supplementary information** for this article is available online: <http://emboj.embopress.org>

### Acknowledgements

The technical assistance of Kirsten Stadel Petersen and Herdis Berg Johansen is greatly appreciated.

### Author contributions

KH and SRP conceived and designed the experiments. KH, TP, AL, SEJ, SHR, SBJ, RN, KAH and MRJ performed the experiments. KH and SRP analysed the data. JHL, TD and MRJ contributed reagents/materials/analysis tools. SRP wrote the paper.

### Conflict of interest

The authors declare that they have no conflict of interest.

## References

- Abdullah Z, Schlee M, Roth S, Mraheil MA, Barchet W, Bottcher J, Hain T, Geiger S, Hayakawa Y, Fritz JH, Civril F, Hopfner KP, Kurts C, Ruland J, Hartmann G, Chakraborty T, Knolle PA (2012) RIG-I detects infection with live *Listeria* by sensing secreted bacterial nucleic acids. *EMBO J* 31: 4153–4164
- Ablasser A, Goldeck M, Caviar T, Deimling T, Witte G, Rohl I, Hopfner KP, Ludwig J, Hornung V (2013) cGAS produces a 2'-5'-linked cyclic

- dinucleotide second messenger that activates STING. *Nature* 498: 380–384
- Auerbuch V, Brockstedt DG, Meyer-Morse N, O’Riordan M, Portnoy DA (2004) Mice lacking the type I interferon receptor are resistant to *Listeria monocytogenes*. *J Exp Med* 200: 527–533
- Barbuddhe SB, Chakraborty T (2009) *Listeria* as an enteroinvasive gastrointestinal pathogen. *Curr Top Microbiol Immunol* 337: 173–195
- Burdette DL, Monroe KM, Sotelo-Troha K, Iwig JS, Eckert B, Hyodo M, Hayakawa Y, Vance RE (2011) STING is a direct innate immune sensor of cyclic di-GMP. *Nature* 478: 515–518
- Carrero JA, Calderon B, Unanue ER (2004) Type I interferon sensitizes lymphocytes to apoptosis and reduces resistance to *Listeria* infection. *J Exp Med* 200: 535–540
- Cavlar T, Deimling T, Ablasser A, Hopfner KP, Hornung V (2013) Species-specific detection of the antiviral small-molecule compound CMA by STING. *EMBO J* 32: 1440–1450
- Chan CW, Crafton E, Fan HN, Flook J, Yoshimura K, Skarica M, Brockstedt D, Dubensky TW, Stins MF, Lanier LL, Pardoll DM, Housseau F (2006) Interferon-producing killer dendritic cells provide a link between innate and adaptive immunity. *Nat Med* 12: 207–213
- Conlon J, Burdette DL, Sharma S, Bhat N, Thompson M, Jiang Z, Rathinam VA, Monks B, Jin T, Xiao TS, Vogel SN, Vance RE, Fitzgerald KA (2013) Mouse, but not human STING, binds and signals in response to the vascular disrupting agent 5,6-dimethylxanthenone-4-acetic acid. *J Immunol* 190: 5216–5225
- Cossart P, Vicente MF, Mengaud J, Baquero F, Perez-Diaz JC, Berche P (1989) Listeriolysin O is essential for virulence of *Listeria monocytogenes*: direct evidence obtained by gene complementation. *Infect Immun* 57: 3629–3636
- Crimmins GT, Herskovits AA, Rehder K, Sivick KE, Lauer P, Dubensky TW Jr, Portnoy DA (2008) *Listeria monocytogenes* multidrug resistance transporters activate a cytosolic surveillance pathway of innate immunity. *Proc Natl Acad Sci U S A* 105: 10191–10196
- Diner EJ, Burdette DL, Wilson SC, Monroe KM, Kellenberger CA, Hyodo M, Hayakawa Y, Hammond MC, Vance RE (2013) The innate immune DNA sensor cGAS produces a noncanonical cyclic dinucleotide that activates human STING. *Cell Rep* 3: 1355–1361
- Gao P, Ascano M, Wu Y, Barchet W, Gaffney BL, Zillinger T, Serganov AA, Liu Y, Jones RA, Hartmann G, Tuschl T, Patel DJ (2013) Cyclic [G(2',5')pA(3',5')p] is the metazoan second messenger produced by DNA-activated cyclic GMP-AMP synthase. *Cell* 153: 1094–1107
- Hamon M, Bierne H, Cossart P (2006) *Listeria monocytogenes*: a multifaceted model. *Nat Rev Microbiol* 4: 423–434
- Holm CK, Jensen SB, Jakobsen MR, Cheshenko N, Horan KA, Moller HB, Gonzalez-Dosal R, Rasmussen SB, Christensen MH, Yarovinsky TO, Rixon FJ, Herold BC, Fitzgerald KA, Paludan SR (2012) Virus-cell fusion as a trigger of innate immunity dependent on the adaptor STING. *Nat Immunol* 13: 737–743
- Horan KA, Hansen K, Jakobsen MR, Holm CK, Waggoner L, West JA, Unterholzner L, Iversen MB, Soby S, Thomson M, Jensen SB, Rasmussen SB, Ellermann-Eriksen S, Kurt-Jones EA, Landolfo S, Melchjorsen J, Bowie AG, Damania B, Fitzgerald KA, Paludan SR (2013) Proteasomal degradation of herpes simplex virus capsids in macrophage releases DNA to the cytosol for recognition by DNA sensors. *J Immunol* 190: 2311–2319
- Jakobsen MR, Bak RO, Andersen A, Berg RK, Jensen SB, Jin T, Laustsen A, Hansen K, Ostergaard LJ, Fitzgerald KA, Xiao T, Mikkelsen JG, Mogensen TH, Paludan SR (2013) IFI16 senses DNA forms of the retroviral replication cycle and controls HIV-1 replication. *PNAS* 110: E4571–E4580
- Jin L, Hill KK, Filak H, Mogan J, Knowles H, Zhang B, Perraud AL, Cambier JC, Lenz LL (2011) MPYS is required for IFN response factor 3 activation and type I IFN production in the response of cultured phagocytes to bacterial second messengers cyclic-di-AMP and cyclic-di-GMP. *J Immunol* 187: 2595–2601
- Jin TC, Perry A, Jiang JS, Smith P, Curry JA, Unterholzner L, Jiang ZZ, Horvath G, Rathinam VA, Johnstone RW, Hornung V, Latz E, Bowie AG, Fitzgerald KA, Xiao TS (2012) Structures of the HIN domain: DNA complexes reveal ligand binding and activation mechanisms of the AIM2 inflammasome and IFI16 receptor. *Immunity* 36: 561–571
- Kerur N, Veetil MV, Sharma-Walia N, Bottero V, Sadagopan S, Otageri P, Chandran B (2011) IFI16 Acts as a nuclear pathogen sensor to induce the inflammasome in response to Kaposi Sarcoma-Associated Herpesvirus Infection. *Cell Host Microbe* 9: 363–375
- Kocks C, Gouin E, Tabouret M, Berche P, Ohayon H, Cossart P (1992) *L. monocytogenes*-induced actin assembly requires the actA gene product, a surface protein. *Cell* 68: 521–531
- Leber JH, Crimmins GT, Raghavan S, Meyer-Morse NP, Cox JS, Portnoy DA (2008) Distinct TLR- and NLR-mediated transcriptional responses to an intracellular pathogen. *PLoS Pathog* 4: e6
- Li T, Diner BA, Chen J, Cristea IM (2012) Acetylation modulates cellular distribution and DNA sensing ability of interferon-inducible protein IFI16. *PNAS* 109: 10558–10563
- Manzanillo PS, Shiloh MU, Portnoy DA, Cox JS (2012) *Mycobacterium tuberculosis* activates the DNA-dependent cytosolic surveillance pathway within macrophages. *Cell Host Microbe* 11: 469–480
- McWhirter SM, Barbalat R, Monroe KM, Fontana MF, Hyodo M, Joncker NT, Ishii KJ, Akira S, Colonna M, Chen ZJ, Fitzgerald KA, Hayakawa Y, Vance RE (2009) A host type I interferon response is induced by cytosolic sensing of the bacterial second messenger cyclic-di-GMP. *J Exp Med* 206: 1899–1911
- O’Connell RM, Saha SK, Vaidya SA, Bruhn KW, Miranda GA, Zarnegar B, Perry AK, Nguyen BO, Lane TF, Taniguchi T, Miller JF, Cheng G (2004) Type I interferon production enhances susceptibility to *Listeria monocytogenes* infection. *J Exp Med* 200: 437–445
- Paludan SR, Bowie AG (2013) Immune sensing of DNA. *Immunity* 38: 870–880
- Parvatiyar K, Zhang Z, Teles RM, Ouyang S, Jiang Y, Iyer SS, Zaver SA, Schenk M, Zeng S, Zhong W, Liu Z, Modlin RL, Liu YJ, Cheng G (2012) The helicase DDX41 recognizes the bacterial secondary messenger cyclic di-GMP and cyclic di-AMP to activate a type I interferon immune response. *Nat Immunol* 13: 1155–1161
- Rasmussen SB, Horan KA, Holm CK, Stranks AJ, Mettenleiter TC, Simon AK, Jensen SB, Rixon FJ, He B, Paludan SR (2011) Activation of autophagy by alpha-herpesviruses in myeloid cells is mediated by cytoplasmic viral DNA through a mechanism dependent on stimulator of IFN genes. *J Immunol* 187: 5268–5276
- Rathinam VA, Jiang Z, Waggoner SN, Sharma S, Cole LE, Waggoner L, Vanaja SK, Monks BG, Ganesan S, Latz E, Hornung V, Vogel SN, Szomolanyi-Tsuda E, Fitzgerald KA (2010) The AIM2 inflammasome is essential for host defense against cytosolic bacteria and DNA viruses. *Nat Immunol* 11: 395–402
- Rayamajhi M, Humann J, Penheiter K, Andreasen K, Lenz LL (2010) Induction of IFN- $\alpha$  enables *Listeria monocytogenes* to suppress macrophage activation by IFN- $\gamma$ . *J Exp Med* 207: 327–337
- Sauer JD, Witte CE, Zemansky J, Hanson B, Lauer P, Portnoy DA (2010) *Listeria monocytogenes* triggers AIM2-mediated pyroptosis upon infrequent bacteriolysis in the macrophage cytosol. *Cell Host Microbe* 7: 412–419
- Sauer JD, Sotelo-Troha K, von Moltke J, Monroe KM, Rae CS, Brubaker SW, Hyodo M, Hayakawa Y, Woodward JJ, Portnoy DA, Vance RE (2011) The

- N-ethyl-N-nitrosourea-induced Goldenticket mouse mutant reveals an essential function of Sting in the in vivo interferon response to *Listeria monocytogenes* and cyclic dinucleotides. *Infect Immun* 79: 688–694
- Schwartz KT, Carleton JD, Quillin SJ, Rollins SD, Portnoy DA, Leber JH (2012) Hyperinduction of host beta interferon by a *Listeria monocytogenes* strain naturally overexpressing the multidrug efflux pump MdrT. *Infect Immun* 80: 1537–1545
- Solodova E, Jablonska J, Weiss S, Lienenklaus S (2011) Production of IFN-beta during *Listeria monocytogenes* infection is restricted to monocyte/macrophage lineage. *PLoS ONE* 6: e18543
- Stetson DB, Medzhitov R (2006) Recognition of cytosolic DNA activates an IRF3-dependent innate immune response. *Immunity* 24: 93–103
- Stockinger S, Materna T, Stoiber D, Bayr L, Steinborn R, Kolbe T, Unger H, Chakraborty T, Levy DE, Muller M, Decker T (2002) Production of type I IFN sensitizes macrophages to cell death induced by *Listeria monocytogenes*. *J Immunol* 169: 6522–6529
- Stockinger S, Kastner R, Kernbauer E, Pilz A, Westermayer S, Reutterer B, Soulat D, Stengl G, Vogl C, Frenz T, Waibler Z, Taniguchi T, Rulicke T, Kalinke U, Muller M, Decker T (2009) Characterization of the interferon-producing cell in mice infected with *Listeria monocytogenes*. *PLoS Pathog* 5: e1000355
- Sun L, Wu J, Du F, Chen X, Chen ZJ (2013) Cyclic GMP-AMP synthase is a cytosolic DNA sensor that activates the type I interferon pathway. *Science* 339: 786–791
- Tanaka Y, Chen ZJ (2012) STING specifies IRF3 phosphorylation by TBK1 in the cytosolic DNA signaling pathway. *Sci Signal*, 5: ra20.
- Thurston TL, Ryzhakov G, Bloor S, von Muhlinen N, Randow F (2009) The TBK1 adaptor and autophagy receptor NDP52 restricts the proliferation of ubiquitin-coated bacteria. *Nat Immunol* 10: 1215–1221
- Unterholzner L, Keating SE, Baran M, Horan KA, Jensen SB, Sharma S, Sirois C, Jin T, Xiao T, Fitzgerald P, Paludan SR, Bowie AG (2010) IFI16 is an innate immune sensor for intracellular DNA. *Nat Immunol* 11: 997–1004
- Woodward JJ, Iavarone AT, Portnoy DA (2010) c-di-AMP secreted by intracellular *Listeria monocytogenes* activates a host type I interferon response. *Science* 328: 1703–1705
- Wu J, Sun L, Chen X, Du F, Shi H, Chen C, Chen ZJ (2013) Cyclic GMP-AMP Is an Endogenous Second Messenger in Innate Immune Signaling by Cytosolic DNA. *Science* 339: 826–830
- Yang P, An H, Liu X, Wen M, Zheng Y, Rui Y, Cao X (2010) The cytosolic nucleic acid sensor LRRFIP1 mediates the production of type I interferon via a beta-catenin-dependent pathway. *Nat Immunol* 11: 487–494
- Zhang ZQ, Yuan B, Bao MS, Lu N, Kim T, Liu YJ (2011) The helicase DDX41 senses intracellular DNA mediated by the adaptor STING in dendritic cells. *Nat Immunol* 12: 959–965
- Zhang X, Shi H, Wu J, Zhang X, Sun L, Chen C, Chen ZJ (2013) Cyclic GMP-AMP containing mixed phosphodiester linkages is an endogenous high-affinity ligand for STING. *Mol Cell* 51: 226–235