

REVIEW

# LNCcation: lncRNA localization and function

Mary Catherine Bridges<sup>1</sup>, Amanda C. Daulagala<sup>1</sup>, and Antonis Kourtidis<sup>1</sup>

Subcellular localization of RNAs has gained attention in recent years as a prevalent phenomenon that influences numerous cellular processes. This is also evident for the large and relatively novel class of long noncoding RNAs (lncRNAs). Because lncRNAs are defined as RNA transcripts >200 nucleotides that do not encode protein, they are themselves the functional units, making their subcellular localization critical to their function. The discovery of tens of thousands of lncRNAs and the cumulative evidence involving them in almost every cellular activity render assessment of their subcellular localization essential to fully understanding their biology. In this review, we summarize current knowledge of lncRNA subcellular localization, factors controlling their localization, emerging themes, including the role of lncRNA isoforms and the involvement of lncRNAs in phase separation bodies, and the implications of lncRNA localization on their function and on cellular behavior. We also discuss gaps in the current knowledge as well as opportunities that these provide for novel avenues of investigation.

## Introduction

A large body of research over the last few decades has revealed that RNAs are multifaceted, versatile regulators of most cellular processes, contrary to the initial perception that they acted solely as mediators for translating DNA to protein. As the field advanced, a factor that has emerged as central to RNA function is their subcellular localization (Buxbaum et al., 2015). Indeed, building on studies of asymmetric RNA localization in ascidia, yeast, and *Xenopus* (Jeffery, 1984; Jeffery, 1989; Long et al., 1997; Melton, 1987; Pizzinga and Ashe, 2014; Pizzinga et al., 2019), a hallmark study of RNA cellular distribution revealed that up to 70% of mRNAs in *Drosophila* embryos exhibit specific localization patterns, serving to nucleate key cellular machineries (Lécuyer et al., 2007).

In mammalian cells, RNA localization has been studied the most in depth in highly polarized cells, such as neurons (Park et al., 2010; Park et al., 2014; Wu et al., 2016), in which it is now well established that selective mRNA transport, localized storage, and/or translation are essential for synaptic plasticity, axon branching, and growth (Fernandez-Moya et al., 2014; Hengst et al., 2006; Perry et al., 2016; Sambandan et al., 2017). MicroRNAs (miRNAs) can also be transported, processed, and actively suppress mRNA targets in response to synaptic stimulation (Corradi et al., 2020). Further, specific mRNAs also localize to cellular protrusions of migrating fibroblasts, where their active translation and subsequent silencing upon retraction control the dynamic process of cell migration (Mardakheh et al., 2015; Mili et al., 2008; Moissoglu et al., 2019; Wang et al., 2017a). Under

homeostatic conditions, mRNAs and a distinct subset of miRNAs, as well as their precursor primary miRNAs (pri-miRNAs), localize at adherens junctions of well-differentiated epithelial cells (Kourtidis et al., 2017; Kourtidis et al., 2015). These miRNAs are processed by adherens junction-localized RNAi machinery to suppress a set of mRNAs involved in cell growth and protumorigenic signaling, thereby maintaining polarized epithelial cell homeostasis (Kourtidis et al., 2017; Kourtidis et al., 2015; Nair-Menon et al., 2020). Moreover, mRNAs and miRNAs also coexist in cytoplasmic membraneless p-bodies (PBs; aka GW-bodies) and stress granules (SGs; Jakymiw et al., 2005; Jakymiw et al., 2007), with the latter mainly forming under conditions of stress to temporarily suppress translation and preserve mRNAs (Anderson and Kedersha, 2009; Leung et al., 2006). These compartments allow cells to rapidly engage and disengage mRNAs in translation, in response to stimuli (Hubstenberger et al., 2017).

These studies demonstrate that spatial subcellular RNA distribution is a broad phenomenon that occurs across cell types and species, under homeostatic, stimulated, or cellular stress conditions. Tight regulation of RNA localization controls localized protein expression, turnover, and subsequent signal regulation. Here, we discuss emerging research that an expanding class of RNAs, long noncoding RNAs (lncRNAs), can function in equally diverse and dynamic cellular processes. Further, we emphasize that their subcellular localization is critical in understanding lncRNA interaction partners, post- or cotranscriptional regulatory modifications, the external stimuli directly

Department of Regenerative Medicine and Cell Biology, Medical University of South Carolina, Charleston, SC.

Correspondence to Antonis Kourtidis: [kourtidi@musc.edu](mailto:kourtidi@musc.edu).

© 2021 Bridges et al. This article is distributed under the terms of an Attribution-Noncommercial-Share Alike-No Mirror Sites license for the first six months after the publication date (see <http://www.rupress.org/terms/>). After six months it is available under a Creative Commons License (Attribution-Noncommercial-Share Alike 4.0 International license, as described at <https://creativecommons.org/licenses/by-nc-sa/4.0/>).

impacting lncRNA function, and the broad range of roles lncRNAs can play in cellular homeostasis.

### lncRNAs

The development of RNA sequencing (RNA-seq) technologies and mapping of expressed transcripts revealed that while the human genome is pervasively transcribed, only a small fraction of RNAs (~2%) code for proteins (ENCODE Project Consortium et al., 2007; Djebali et al., 2012; Kapranov et al., 2007). The majority of expressed transcripts do not encode protein, with those >200 nt in length being broadly classified as lncRNAs (Hangauer et al., 2013; Iyer et al., 2015; Managadze et al., 2013; St Laurent et al., 2015; see text box). In this review, we focus on these >200-nt-long RNA transcripts with described noncoding functions. lncRNAs are now recognized as playing crucial roles in numerous cellular processes, including the cell cycle (Kitagawa et al., 2013), differentiation (Ballarino et al., 2016; Brazão et al., 2016; Delás et al., 2017), and metabolism (Sirey et al., 2019; Sun and Wong, 2016), as well as in disease (Esteller, 2011; Wang et al., 2013; Yuan et al., 2014). Recent evidence also suggests that lncRNAs play a role in viral infection (Wang et al., 2020). An outpouring of lncRNA-centered research over the last decade has been fueled by the intriguing nature of these RNAs, which can function through diverse mechanisms of action. For example, lncRNAs can modulate transcription, epigenetic modifications, protein/RNA stability, translation, and posttranslational modifications by interacting with DNA (Arora et al., 2014; Clemson et al., 1996; Postepska-Igielska et al., 2015), RNAs (Grelet et al., 2017; Kleaveland et al., 2018; Zealy et al., 2018) and/or proteins (Ahn et al., 2018; Jiang et al., 2017; Yamazaki et al., 2018). lncRNAs were also recently shown to directly interact with signaling receptors (Schmidt et al., 2020). The ability of lncRNAs to interact with a range of molecular species underscores that understanding lncRNA localization and local interactions are key to predicting their function.

While lncRNAs do not encode protein, certain aspects of lncRNA biology parallel that of mRNAs. Like mRNAs, the majority of lncRNAs are transcribed by RNA polymerase II (Pol II) and are capped and polyadenylated (Derrien et al., 2012).

#### Definitions of key terms

**long non-coding RNAs (lncRNAs):** RNA transcripts longer than 200 nucleotides that do not encode protein

**circular RNAs (circRNAs):** a subclass of long non-coding RNAs with covalently linked ends that are generated during splicing when a splice donor site joins an upstream splice acceptor site (“back-splicing”)

**phase separation bodies:** non-membranous subcellular structures that form through liquid–liquid phase separation of ribonucleoprotein complexes

**nuclear speckles:** nuclear, phase-separated bodies, enriched in and regulating pre-mRNA splicing factors

**paraspeckles:** nuclear, phase-separated bodies that regulate gene expression by sequestering RNAs and proteins

**p-bodies (PBs):** cytoplasmic, phase-separated bodies, constitutively present under homeostatic conditions, where untranslating mRNAs associate with the RNAi machinery, miRNAs, and the RNA decay machinery

**stress granules (SGs):** cytoplasmic, phase-separated bodies, composed of untranslating mRNAs that form in response to translational arrest triggered by stress stimuli

Although it was originally purported that lncRNAs are unstable, this is true for only a minority of lncRNAs (Clark et al., 2012). Most lncRNAs are stabilized through polyadenylation (Beaulieu et al., 2012; Clark et al., 2012), while non-polyadenylated lncRNAs can be stabilized through secondary structures, such as triple-helical structures in their 3' ends (Brown et al., 2012; Wilusz et al., 2012). Apart from a stabilizing role, these 3' sequence features can facilitate efficient nuclear export (Wilusz et al., 2012). The vast majority of lncRNAs undergo extensive alternative splicing, dramatically increasing their potential number of isoforms (Deveson et al., 2018). It was recently reported that while lncRNA splicing efficiency, meaning the specific intron splicing frequency, appears to be lower than that of mRNAs (Zuckerman and Ulitsky, 2019), in agreement with previous reports (Melé et al., 2017; Tilgner et al., 2012), lncRNAs are substantially more alternatively spliced than mRNAs. The extensive alternative splicing of lncRNAs as an overlooked aspect of their biology with the potential to further diversify the functional outcome of an lncRNA via differential localization patterns is discussed later in this review.

While lncRNA expression levels are typically lower than that of mRNAs (Mukherjee et al., 2017), they display stronger tissue-specific expression patterns, suggesting integral roles in cell type-specific processes (Cabili et al., 2015; Derrien et al., 2012; Djebali et al., 2012; Zuckerman and Ulitsky, 2019). Further, while mRNAs exhibit high sequence conservation among species, lncRNAs generally lack this conservation (Hezroni et al., 2015; Kutter et al., 2012; Necsculea et al., 2014; Ulitsky, 2016; Ulitsky et al., 2011). While this makes assessing lncRNA function more challenging, it may also provide insights on the roles that lncRNAs have evolved to play in different species. Still, there are subsets of lncRNAs that exhibit conservation at the sequence or genomic position level and may function similarly across species (Amaral et al., 2018; Hezroni et al., 2015; Necsculea et al., 2014; Ulitsky, 2016; Ulitsky et al., 2011). However, a recent intriguing study (Guo et al., 2020a) revealed that while a significant set of lncRNAs displayed sequence and/or positional conservation between human and mouse embryonic stem cells, these lncRNAs are processed differently, consequently localize to different subcellular compartments, and ultimately serve distinct functions in mouse versus human cells. This was starkly contrasted by conserved mRNAs, which displayed similar localization patterns in both species. This work demonstrates that lncRNA sequence conservation does not always translate to conserved functional roles and that lncRNA processing and binding partners significantly impact subcellular distribution and function. Most importantly, this study further emphasizes a role for lncRNA localization in lncRNA function (Chen, 2016). Overall, some of the differences between mRNAs and lncRNAs reflect that unlike mRNAs, which need to be translated into proteins that carry out specific cellular functions, lncRNAs themselves are the functional unit. Therefore, like proteins, lncRNA functions in different subcellular compartments are directed by local molecular interactions, which must be finely tuned to maintain cellular homeostasis.

## lncRNAs in the nucleus versus the cytoplasm

The first functionally characterized lncRNAs were primarily chromatin regulators. Although those studies established functional significance for an unappreciated class of RNAs, they also instilled the notion that lncRNAs are generally nuclear (Clemson et al., 1996; Khalil et al., 2009; Mondal et al., 2010; Tsai et al., 2010; Zhao et al., 2008). Indeed, an early microarray-based screen for nuclear-enriched polyadenylated RNAs uncovered three abundant lncRNA transcripts, namely *XIST*, *NEATI*, and *MALATI* (Hutchinson et al., 2007). Although lncRNAs are overall more numerous in the nucleus (Cabili et al., 2015; Fazal et al., 2019; Kaewsapsak et al., 2017), recent studies indicate that the number of cytoplasmic lncRNAs is higher than previously thought (Benoit Bouvrette et al., 2018; Carlevaro-Fita et al., 2016; van Heesch et al., 2014), expanding the repertoire of distinct topologies in which lncRNAs can participate inside the cell (Fig. 1). Mechanisms that regulate nuclear or cytoplasmic localization of lncRNAs are extensively discussed later in this review.

Interestingly, although nuclear lncRNAs are overall more abundant, they are less stable than their cytoplasmic counterparts (Clark et al., 2012; Zuckerman and Ulitsky, 2019). It has been suggested that the instability of nuclear lncRNAs reflects their roles in regulating gene expression, facilitating dynamic fine tuning of their levels in response to stimuli, analogous to the turnover of transcription factors (Clark et al., 2012). Mechanistically, nuclear instability of lncRNAs can be regulated by PABPN1 through promoting polyA-polymerase-dependent hyperadenylation and subsequent decay of lncRNAs (Bresson et al., 2015).

Because lncRNA interactions influence their function, the roles of lncRNAs in the nucleus are expected to be different than in the cytoplasm. In the nucleus, lncRNAs function to modulate transcriptional programs through chromatin interactions and remodeling (Kugel and Goodrich, 2012; Melé and Rinn, 2016; Saxena and Carninci, 2011) and establish spatial organization of the nuclear compartment via scaffolding (Clemson et al., 2009). In the cytoplasm, lncRNAs function to mediate signal transduction pathways, translational programs, and posttranscriptional control of gene expression. For example, lncRNAs can sequester miRNAs (Cesana et al., 2011; Du et al., 2016) and proteins (Lee et al., 2016) to regulate their activity and levels (Du et al., 2016; Grelet et al., 2017; Song et al., 2014), influence protein posttranslational modifications (Lin et al., 2016), or mediate mRNA translation and stability (Carrieri et al., 2012; Gong and Maquat, 2011; Yoon et al., 2012; Yuan et al., 2017). Notably, a recent study revealed that lncRNAs serve as scaffolds in the cytoplasm to nucleate complex networks of proteins functioning in tightly regulated signaling transduction programs, such as the TLR-TRIF (Toll-like receptor/TIR-domain-containing adapter-inducing IFN- $\beta$ ) immune pathway (Aznaourova et al., 2020). The lncRNA *PYCARD-AS1* provides an example of how the same lncRNA transcript functions differently in the nuclear versus the cytoplasmic compartment. *PYCARD-AS1* is an antisense lncRNA to the proapoptotic gene *PYCARD*. In the nucleus, this lncRNA recruits DNMT1 and G9a to the *PYCARD* promoter to facilitate DNA methylation and H3K9me2 modification. Concomitantly, in

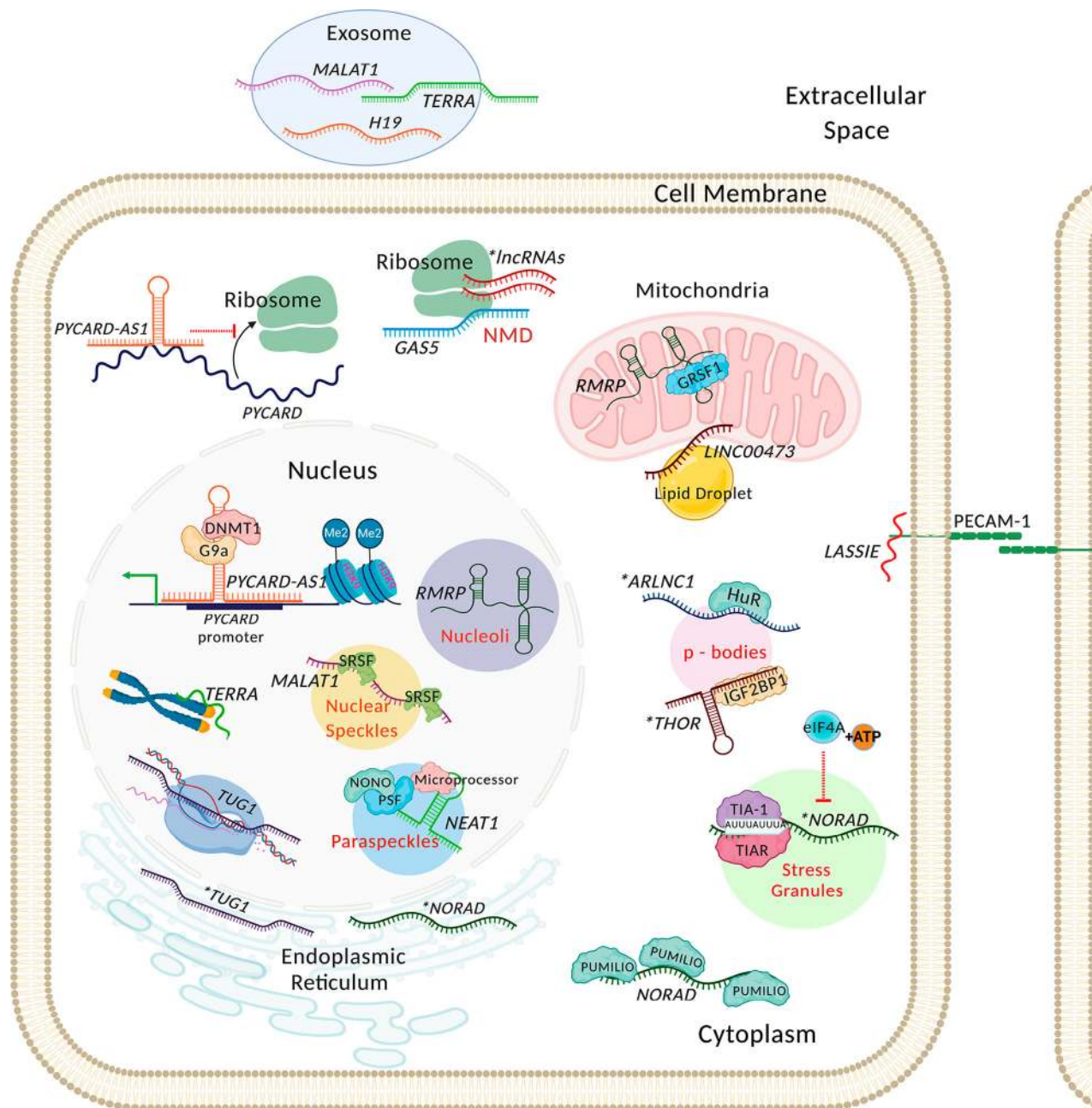
the cytoplasm, *PYCARD-AS1* interacts with *PYCARD* mRNA to inhibit ribosome assembly and *PYCARD* translation (Miao et al., 2019; Fig. 1). Therefore, the subcellular microenvironment enables distinct functions of the same lncRNA, by enabling interactions with different functional protein partners and targets of action.

## Localization of lncRNAs to organelles and macromolecular structures

In addition to their overall distribution in the nucleus or the cytoplasm, studies have begun to interrogate the localization of lncRNAs to specific organelles and macromolecular structures. The distribution of RNAs to distinct compartments has largely been studied using fractionation-based methods, followed by RNA-seq and in situ hybridization-based microscopy. While providing valuable inventories, these approaches are limited to identifying lncRNAs in cell fractions that can be biochemically separated and by the number and design of sequence-specific imaging probes. New advances in imaging techniques have facilitated imaging of thousands of barcoded RNAs (Chen et al., 2015; Shah et al., 2016), while APEX-RIP, a method that combines engineered ascorbate peroxidase (APEX)-catalyzed proximity biotinylation of endogenous proteins (Rhee et al., 2013) and RNA immunoprecipitation (RIP) has allowed for specific, unbiased, a priori quantification of RNAs in compartments such as the nucleus, cytosol, mitochondria, and ER (Benhalevy et al., 2018; Kaewsapsak et al., 2017). Notably, the most recent studies using APEX-RIP have provided further, finer-scale mapping to the nuclear lamina, nucleolus, nuclear pore, ER membrane, and outer mitochondrial membrane (Fazal et al., 2019), as well as cell-cell interfaces (Benhalevy et al., 2018) and phase-separated bodies (Padrón et al., 2019). Although these inventories have been constructed, only a small portion of organelle-associated lncRNAs have been further validated or functionally characterized. Below we highlight lncRNAs with characterized functions in distinct subcellular compartments and discuss current gaps in knowledge.

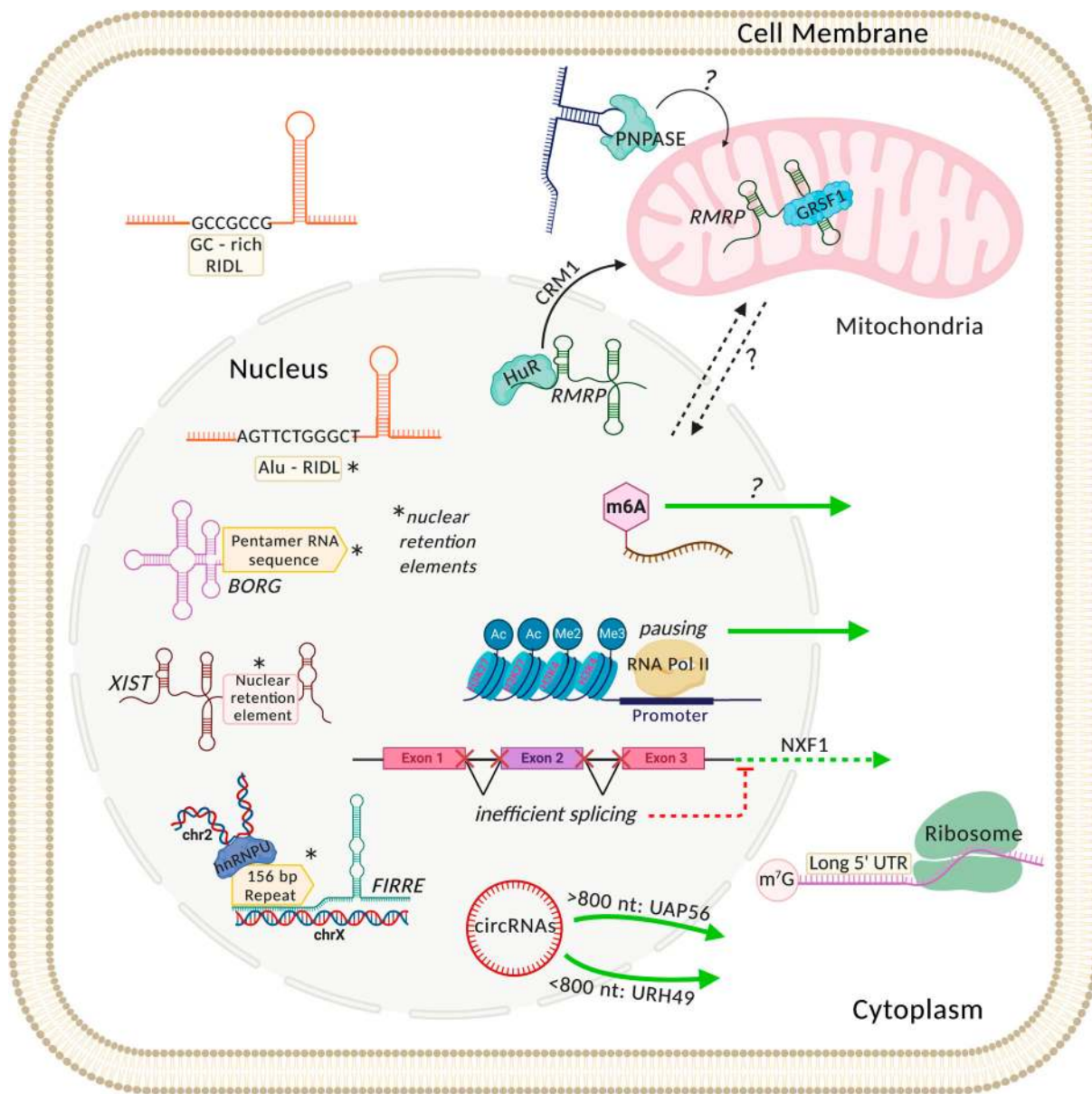
### Mitochondrial- and ER-localized lncRNAs

A groundbreaking study (Rackham et al., 2011) described that noncoding RNAs, other than rRNAs and tRNAs, make up 15% of the human mitochondrial transcriptome. This and subsequent studies revealed that the majority of mitochondrially enriched lncRNAs play key roles in mitochondrial gene regulation (Mercer et al., 2011; Rackham et al., 2012; Rackham et al., 2011). Regulation of mitochondrially encoded lncRNAs was found to be highly cell- and tissue-specific and to be controlled by nuclear-encoded proteins (Rackham et al., 2011). In addition, lncRNAs transcribed from nuclear DNA have important roles in mitochondrial homeostasis (Leucci et al., 2016; Noh et al., 2016; Vendramin et al., 2018). For example, *RMRP* is the noncoding RNA component of the RNA processing endoribonuclease (RNase MRP) that is essential for the processing of preribosomal RNA in the nucleolus (Goldfarb and Cech, 2017). However, upon binding to Hu antigen R (HuR), *RMRP* is exported in the cytoplasm through CRM1 and targeted to the mitochondria, where it selectively localizes to the inner mitochondrial matrix and associates



**Figure 1. Localization of lncRNAs to organelles and macromolecular structures.** lncRNAs can function distinctly and have different interaction partners based on localization. The lncRNA *PYCARD-AS1* suppresses *PYCARD* mRNA transcription in the nucleus via promoter binding and G9a, DNMT1 recruitment; in the cytoplasm, *PYCARD-AS1* binds *PYCARD* mRNA, preventing ribosome assembly. While *RMRP* is essential for processing of preribosomal RNA in the nucleolus, *RMRP* binds *GRSF* in the mitochondria to maintain structure and mediate oxidative phosphorylation and mitochondrial DNA replication. The cAMP-dependent up-regulation of *LINC00473* directs shuttling to the cytoplasm and localization at the mitochondria-lipid droplet interface, which regulates lipolysis and mitochondrial function. lncRNAs with established roles in the nucleus (*TUG1*, regulation of transcription) and cytosol (*NORAD*, *PUMILIO* sequestering) have been identified in the ER, but ER-specific roles have not been characterized. lncRNAs also associate with ribosomes. While some may code for small peptides, lncRNAs may also be degraded at ribosomes through NMD; *GAS5* is an lncRNA that undergoes NMD at ribosomes. SG- and PB-associated lncRNAs have been identified but not functionally characterized. lncRNA recruitment to SGs and PBs may be mediated by interactions with RBPs (RBPs in PBs: *IGF2BP1* and *HuR*; RBPs in SGs: *TIA-1* and *TIAR*). *NORAD* SG recruitment is regulated by *eIF4A*, limiting RNA condensation. *MALAT1* in nuclear speckles is key for recruitment of splice factors (*SRF1*, 2, and 3), and *NEAT1* is essential for paraspeckle formation, sequestering RNAs and protein, and facilitating miRNA processing via *NONO/PSF/microprocessor* interactions. *MALAT1*, *TERRA*, and *H19* were shown to be packaged in exosomes, and the lncRNA *LASSIE* stabilizes endothelial adherens junctions via association with *PECAM-1*. Compartments labeled with red text indicate phase-separated structures. Asterisks indicate lncRNAs with uncharacterized functions at the cellular location. RNAs and structures are not drawn to scale and are depicted as they are for artistic purposes.

Downloaded from [http://rupress.org/jcb/article-pdf/220/2/e202009045/1408214/jcb\\_202009045.pdf](http://rupress.org/jcb/article-pdf/220/2/e202009045/1408214/jcb_202009045.pdf) by guest on 27 August 2022



**Figure 2. Sequence elements and mechanisms that regulate subcellular localization of lncRNAs.** Sequence features can promote the nuclear retention or cytoplasmic enrichment of lncRNAs. Examples of nuclear retention elements are indicated by asterisks and include motifs repurposed from transposable elements, known as RIDLs, a pentamer motif in *BORG*, and a highly structured repeat in *FIRRE*, which is bound by heterogeneous nuclear ribonucleoprotein U, facilitating chromatin interaction. Loss of the pentamer motif in *BORG* leads to cytoplasmic export, while the nuclear retention element in *XIST* sequesters cytoplasmic RNAs to the nucleus. GC-rich RIDLs are associated with lncRNA cytoplasmic enrichment. Inefficient splicing may promote nuclear retention, while inefficiently spliced transcripts may use NXF1 for cytoplasmic export. RNA Pol II pausing is associated with cytoplasmic export of lncRNAs with poor splice site conservation. While m6A modification is a fast-track cytoplasmic export signal in mRNAs, it is unclear how it acts on lncRNAs. circRNAs that are >800 nt are efficiently exported to the cytoplasm through UAP56, whereas shorter ones (<800 nt) are exported through URH49. Questions remain about targeting of lncRNAs to distinct organelles or domains, such as shuttling between the nucleus and mitochondria; RBPs may play a role. The binding of HuR to RMRP in the nucleus facilitates export via CRM1, and association with GRSF1 influences mitochondrial localization. Stem loop structures in RNAs may facilitate mitochondrial import via PNPASE. lncRNAs associated with ribosomes have longer 5' UTRs and are depleted of repetitive elements. Asterisks indicate nuclear retention elements. RNAs and structures are not drawn to scale and are depicted as they are for artistic purposes.

with the mitochondrial protein GRSF1 to maintain mitochondrial structure and mediate oxidative phosphorylation and mitochondrial DNA replication (Noh et al., 2016; Figs. 1 and 2). Additionally, a recent study revealed that differentiation of thermogenic adipocytes leads to cAMP-dependent transcriptional up-regulation of the lncRNA, *LINC00473*, and distinct

mitochondrial interactions (Tran et al., 2020). While *LINC00473* is localized in the nucleus at basal state, during differentiation, upon cAMP up-regulation, *LINC00473* shuttles to the cytoplasm and localizes to the lipid droplet-mitochondria interface, where it exists in multimeric complexes with mitochondrial and lipid droplet proteins and regulates lipolysis and mitochondrial

function (Tran et al., 2020; Fig. 1). Together, these studies demonstrate that lncRNAs play a role in the dynamic interplay between the mitochondria and the nucleus.

Furthermore, APEX-RIP analysis using an APEX construct that is targeted to the ER lumen (Kaewsapsak et al., 2017) revealed enrichment of a small group of 28 lncRNAs. Although lncRNAs found in the ER were far less abundant than mRNAs, they represent a new and distinct family of ER-localized lncRNAs. Indeed, a recent study reported that although 97% of ER membrane-enriched transcripts were mRNAs, two lncRNAs, namely *TUG1* and *NORAD*, were identified as highly abundant ER-enriched transcripts (Fazal et al., 2019), pointing toward potentially novel and unexplored function roles, since *TUG1* has been previously shown to function in the nucleus (Wang et al., 2017b), and *NORAD*'s role in sequestering Pumilio proteins is more broadly observed through the cytoplasm (Lee et al., 2016; Fig. 1). However, the role and association of lncRNAs with the ER is still largely unexplored and represents a distinct gap in our knowledge of lncRNA localization and function.

### ***lncRNAs associated with ribosomes***

Multiple studies have observed recruitment of lncRNAs to ribosomes and reported their association with the translational machinery (Carlevaro-Fita et al., 2016; van Heesch et al., 2014). Strikingly, 54% of expressed lncRNAs were reported to be in the cytoplasm, with the majority of those lncRNAs having most of their transcripts associated with polysomal fractions (Carlevaro-Fita et al., 2016). Although it is evident that ribosomal complexes are sites of distinct lncRNA localization in the cytoplasm, there remains much controversy over the functional significance of this association. A substantial number of annotated lncRNAs have recently been identified to encode small peptides (Anderson et al., 2015; Chen et al., 2020; Huang et al., 2017; Matsumoto et al., 2017; Nelson et al., 2016; Rossi et al., 2019; Stein et al., 2018; van Heesch et al., 2019); however, that lncRNA association with polysomal fractions is indicative of active translation (Ingolia et al., 2011; Ruiz-Orera et al., 2014) is not supported by other studies (Bánfai et al., 2012; Guttman et al., 2013). In fact, work in yeast and mammalian cells demonstrated that lncRNAs or unannotated RNAs are targeted to ribosomes for degradation by nonsense-mediated decay (NMD; Carlevaro-Fita et al., 2016; Chew et al., 2013; Smith et al., 2014). Interestingly, it was shown that ribosomal localization and NMD sensitivity of some of these transcripts is due to the presence of single short open reading frames at their 5' ends (Smith et al., 2014). In another example, the well-studied *GAS5* lncRNA has also been shown to be degraded through NMD when it is associated with ribosomes, owing to the presence of premature stop codons (Smith and Steitz, 1998; Tani et al., 2013). Therefore, current evidence regarding the exact functions of lncRNAs at ribosomes is not conclusive, and more studies are required to more fully understand the significance and complexity of this localization (Fig. 1).

### ***lncRNAs in phase-separation bodies***

Besides the traditionally known membrane-bound organelles, nonmembranous subcellular structures have recently gained recognition as distinct cellular compartments where specific sets

of molecules concentrate to spatiotemporally regulate critical cellular mechanisms (Banani et al., 2017; Ivanov et al., 2019; Protter and Parker, 2016; Shin and Brangwynne, 2017). These structures form through the process of liquid-liquid phase separation (Courchaine et al., 2016; Weber and Brangwynne, 2012), resulting in well-defined borders while enabling a dynamic exchange of content with the cytoplasm or nucleoplasm (Brangwynne et al., 2009; Lee et al., 2013; Shin and Brangwynne, 2017). Generally, these phase condensates represent ribonucleoprotein (RNP) complexes where protein-protein, RNA-protein, and RNA-RNA interactions promote condensation (Banani et al., 2017; Fay et al., 2017; Protter and Parker, 2016; Shin and Brangwynne, 2017; Van Treeck et al., 2018; see text box).

Phase-separation bodies include nuclear speckles, paraspeckles, Cajal bodies, and nucleoli in the nucleus, as well as PBs and SGs in the cytoplasm. Neuronal granules are also used for synaptic transport and regulation. Each of these compartments serves distinct roles and therefore consists of specific RNA species. lncRNAs have roles in the organization and function of these phase-separation bodies. Specifically, some of the most well-characterized lncRNAs, such as *MALAT1* and *NEAT1*, accumulate in nuclear speckles and paraspeckles, respectively (Clemson et al., 2009; Hutchinson et al., 2007; Sasaki et al., 2009; Sunwoo et al., 2009; Fig. 1). Nuclear speckles are phase-separated bodies that are enriched in and regulate pre-mRNA splicing factors (Spector and Lamond, 2011), while paraspeckles are subnuclear bodies that exist near speckles and also contain splice factors, but are largely thought to function in regulating gene expression via sequestering mRNAs and proteins (Chen and Carmichael, 2009; Hirose et al., 2014; Imamura et al., 2014; see text box). *NEAT1* is essential for the formation and structural integrity of paraspeckles (Clemson et al., 2009; Sasaki et al., 2009; Sunwoo et al., 2009), which are dependent on specific RNA-RNA interactions with *NEAT1* domains (Lin et al., 2018). *NEAT1* and *MALAT1* are large lncRNAs, and the length of these speckle-enriched lncRNAs aligns with their role in sequestering distinct RNA species, directly or indirectly, through capturing of RNA binding proteins (RBPs). *MALAT1* is known to regulate pre-mRNA splicing and is specifically required for the recruitment of several serine- and arginine-rich splicing factors (SRSF1, 2, and 3) to nuclear speckles (Tripathi et al., 2010). Notably, a "bird's nest" model for *NEAT1* has been described, in which *NEAT1* broadly interacts with many RBPs, specifically the non-POU domain containing octamer binding (NONO)/polypyrimidine tract-binding protein-associated splicing factor (PSF) heterodimer, to build an extensive scaffold (bird's nest) structure and recruit pri-miRNAs and the microprocessor in close proximity; this positioning functions to enhance the efficiency of pri-miRNA processing in paraspeckles (Jiang et al., 2017; Fig. 1). Multiple RNA regions of *NEAT1* were important to this recruitment, but a distinct "pseudo pri-miRNA" in the *NEAT1* 3' end served an important role in attracting the microprocessor via its stem loop, further underscoring that lncRNA secondary structures help to define their potential roles, in addition to stability.

Although the presence of lncRNAs in cytoplasmic PBs and SGs has been demonstrated, there are still many questions regarding their roles and mechanisms of recruitment. In the

cytoplasm, PBs are constitutively present under homeostatic conditions, where untranslating mRNAs associate with the RNAi machinery, miRNAs, and the RNA decay machinery (Hubstenberger et al., 2017; Schütz et al., 2017; Standart and Weil, 2018; Teixeira et al., 2005; see text box). Similarly, SGs are largely composed of untranslating mRNAs, yet SGs form in response to translational arrest triggered by stress stimuli (Aulas et al., 2017; Kedersha et al., 2005; Panas et al., 2016; Tauber and Parker, 2019; see text box). The lack of translation of these mRNAs, in addition to their length, has been determined to influence their recruitment to these bodies (Khong et al., 2017; Matheny et al., 2019). These observations regarding mRNAs raise questions of whether and how untranslated lncRNAs are recruited to these bodies. Studies profiling the transcriptome of PBs and SGs have identified the presence of lncRNAs. However, compared with mRNAs, the abundance of lncRNA species seems to be overall low (Khong et al., 2017; Namkoong et al., 2018). Although low abundance of lncRNAs could be interpreted as being due to their minimal functional significance in these bodies, a recent study (Pitchiaya et al., 2019) tracking the dynamics of individual lncRNAs with PB foci suggests that the transient nature of interactions of lncRNAs with the periphery of PBs may make it difficult to capture lncRNA PB/SG interactors with the biochemical isolation methods used by previous transcriptome inventories (Khong et al., 2017; Namkoong et al., 2018). That work also demonstrated that lncRNAs interacting with known PB-enriched proteins such as IGF2BP1 (*THOR* lncRNA) and HuR (*ARlnc1* lncRNA) interact more frequently and less randomly than lncRNAs lacking such binding sites for protein partners (Hubstenberger et al., 2017; Pitchiaya et al., 2019; Fig. 1). When it comes to the role of lncRNAs in these cytoplasmic phase condensates, it has been hypothesized (Pitchiaya et al., 2019) that the transient interactions of lncRNAs with the PB periphery may function to deposit mRNAs to PBs for storage or remove mRNAs from PBs to be translated in the cytoplasm. Notably, one lncRNA found to be significantly enriched within SGs is *NORAD* (Khong et al., 2017; Namkoong et al., 2018; Fig. 1). While the function of *NORAD* in SGs has not been explored in more detail, it has been proposed that the propensity of *NORAD* to condense via RNA–RNA interactions may play a role in SG recruitment; a recent study reported that the ATP-helicase eIF4A prevents *NORAD* SG recruitment via destabilizing RNA–RNA interactions, independently of translation (Tauber et al., 2020). Alternatively, it was suggested that *NORAD* SG recruitment was due to the presence of AU-rich elements in the transcript, which may facilitate enrichment via AU-rich element-binding proteins, such as TIA-1 or TIAR (Namkoong et al., 2018), which are essential for SG formation (Gilks et al., 2004). Together, these studies suggest a multifaceted role for lncRNAs being both structurally and functionally important players in phase-separation bodies.

### ***lncRNAs at the cell periphery***

Recently, the shear stress-induced lncRNA *LASSIE* was shown to be enriched in and stabilize endothelial adherens junctions through interaction with the cell–cell adhesion component PECAM-1 at areas of cell–cell contact (Stanicek et al., 2020; Fig. 1).

Furthermore, the lncRNA *lncMER52A*, which is specifically expressed in hepatocellular carcinoma, was found to interact with and stabilize p120 catenin, a key member of adherens junctions, to promote Rho GTPase signaling (Wu et al., 2020). Although it is not clear whether this latter interaction occurs at cell–cell junctions (Wu et al., 2020), it further demonstrates the potential of lncRNAs to localize at areas of cell–cell contact. These findings, in addition to the discovery of RNA complexes and large sets of mRNAs and miRNAs interacting and colocalizing with cadherin complexes at epithelial cadherin junctions (Kourtidis et al., 2017; Kourtidis et al., 2015; Nair-Menon et al., 2020), as well as of mRNAs interacting with the gap junction component Connexin 43 in HEK293 cells (Benhalevy et al., 2018), support the notion that the cell periphery may also be an lncRNA-hosting subcellular compartment.

In addition, the discovery of lncRNAs as cargo in exosomes revealed potential roles of lncRNAs outside of the cell (Ahadi et al., 2016; Berrondo et al., 2016; Dong et al., 2016; Gezer et al., 2014; Huang et al., 2013; Li et al., 2015). Indeed, a growing body of evidence suggests that lncRNAs are actively sorted into exosomes, based on observations that levels of lncRNAs found in exosomes do not correlate with the levels measured in their parental cells (Gezer et al., 2014; Kogure et al., 2013; Koldemir et al., 2017) and that distinct lncRNAs are enriched in exosomes compared with their donor cells (Chen et al., 2016). Strikingly, exosomal lncRNA signatures are distinct, depending on whether exosomes are secreted from the apical or basolateral surface of polarized colon epithelial cells (Chen et al., 2016). Functionally, exosomes potentially mediate intercellular transfer of *MALAT1* (Zhang et al., 2018) and *H19* lncRNAs (Iempridee, 2017), which leads to increased cancer cell growth and transformation (Fig. 1). Additionally, packaging of the *TERRA* lncRNA into exosomes stimulates innate immunity (Wang et al., 2015; Fig. 1). The exact mechanisms of lncRNA-specific loading into exosomes and acceptor cell uptake are currently elusive. It is possible that similar determinants known to direct mRNA and miRNA exosomal loading, such as sequence domains (Bolukbasi et al., 2012) and association with the RNAi machinery and specific RBPs (Cha et al., 2015; Melo et al., 2014), may direct lncRNA sorting as well. However, the apparent lack of knowledge regarding active lncRNA loading to exosomes offers opportunities for further investigation.

### **Mechanisms regulating lncRNA localization**

The instructions for the localization of lncRNAs are generally thought to be encoded in their sequence. The presence or absence of certain motifs can facilitate interactions with certain RBPs or chromatin and direct either cytoplasmic export or nuclear retention (Guttman and Rinn, 2012; Mercer and Mattick, 2013). A concept that has gained traction in the field postulates that for long RNAs (lncRNAs and mRNAs), nuclear export is the default pathway and certain sequence elements are required for nuclear retention (Palazzo and Lee, 2018). For example, several nuclear lncRNAs contain nuclear retention elements, and when these sequence domains were deleted or mutated, the lncRNAs were exported to the cytoplasm (Lubelsky and Ulitsky, 2018; Miyagawa et al., 2012; Zhang et al., 2014). Further, fusing these

sequence elements to reporters or documented cytoplasmic RNAs was sufficient to sequester them in the nucleus (Lubelsky and Ulitsky, 2018; Shukla et al., 2018; Zhang et al., 2014). Independently, several of these studies demonstrated that the degree of lncRNA nuclear localization increases in a dose-dependent manner, in response to the number of nuclear retention elements in an lncRNA sequence (Carlevaro-Fita et al., 2019; Lubelsky and Ulitsky, 2018).

Several types of sequence motifs are recognized to promote nuclear retention. These motifs have been identified in more focused efforts, such as exploring the localization signals of individual lncRNAs and evaluating retention domains of interest (Carlevaro-Fita et al., 2019; Miyagawa et al., 2012; Zhang et al., 2014), as well with large-scale sequencing screens (Lubelsky and Ulitsky, 2018; Shukla et al., 2018; Yin et al., 2020). Examples of nuclear retention elements include a 15-nt C-rich motif (Shukla et al., 2018), a distinct pentamer motif in *BORG* (Zhang et al., 2014), and a larger, highly structured 156-bp repeat in *FIRRE*, which is bound by heterogeneous nuclear ribonucleoprotein U, facilitating the interaction of *FIRRE* with chromatin (Hacisuleyman et al., 2014; Fig. 2). Some lncRNAs have nuclear retention elements repurposed from transposable elements, known as repeat insertion domains of lncRNA (RIDLs; Carlevaro-Fita et al., 2019; Chillón and Pyle, 2016; Johnson and Guigó, 2014; Lubelsky and Ulitsky, 2018; Nguyen et al., 2020; Shukla et al., 2018). For example, a 42-nt motif derived from an Alu repeat that contains C-rich elements facilitates nuclear retention in a subset of lncRNAs through binding to heterogeneous nuclear ribonucleoprotein K (Lubelsky and Ulitsky, 2018; Fig. 2). It is important to note that this heterogeneous nuclear ribonucleoprotein K-mediated nuclear enrichment was more active in some cell types compared with others (Lubelsky and Ulitsky, 2018; Zuckerman and Ulitsky, 2019). This cell type-related specificity highlights the fact that sequence alone does not solely determine whether an lncRNA will be localized to a distinct compartment, but it is also influenced by the availability and expression levels of other binding partners that act as trans-regulators to help mediate localization. Along the lines of trans-regulator expression in distinct cell types, it has been recently reported that conserved lncRNAs in human embryonic stem cells are spliced more often than their mouse counterparts, resulting in cytoplasmic export (Guo et al., 2020a). In mouse embryonic stem cells, these conserved lncRNAs were preferentially retained in the nucleus as a result of splicing suppression by the trans factor PPIE, a member of the spliceosome associated peptidyl-prolyl cis-trans isomerase family (Schiene-Fischer, 2015), whose expression levels decrease from mouse to primates.

Together, these studies suggest that the presence of certain motifs in an lncRNA does not directly correlate with nuclear retention. Multiple motifs and interaction partners may cooperatively contribute to or compete to regulate nuclear retention, whereas the secondary structure and posttranscriptional modifications of an lncRNA can be important to allow access to this motif. With this idea in mind, a recent study evaluated the ability of computational models that incorporate multiple factors (i.e., splice efficiency, gene architecture, chromatin marks, and sequence elements) to predict nuclear or cytoplasmic

enrichment of lncRNAs and protein coding genes (Zuckerman and Ulitsky, 2019). By testing these models on RNA-seq data in nine cell lines from the ENCODE project, that study found that a combination of these factors was able to predict only 15–30% of the variance in localization for lncRNAs, emphasizing that lncRNA localization is complex and directed by still-unknown factors. This work did provide insights on surprising new localization mechanisms, distinct from those influencing mRNAs. For example, it is well established that efficient splicing strongly enhances mRNA export efficiency (Hocine et al., 2010; Valencia et al., 2008). Generally, lncRNAs are inefficiently spliced, partially due to weaker binding of the critical splice factor U2AF65, their smaller polypyrimidine tracts, the greater distance of the branch point to the 3' splice site, or their overall lack of conserved splice sites (Melé et al., 2017; Schlackow et al., 2017; Tilgner et al., 2012; Zuckerman and Ulitsky, 2019). Inefficient splicing of lncRNAs could indeed result in lower export efficiency and nuclear enrichment (Guo et al., 2020b; Zuckerman and Ulitsky, 2019; Fig. 2). However, while inefficient splicing was the major predictor of nuclear retention for protein coding genes, Pol II pausing and chromatin marks played a larger role in predicting lncRNA localization (Zuckerman and Ulitsky, 2019). Pol II promoter-proximal pausing was associated with increased nuclear export, independently of expression level. It was suggested that this pausing could allow for increased association with export factors. Notably, this was less predictive of lncRNAs and protein coding genes with highly conserved splice sites, and therefore the Pol II pausing mechanism was proposed as an alternative export mechanism for lncRNAs with poor splice site conservation. It was also noted that H3K27 acetylation and H3K4 di-/trimethylation positively correlated with cytoplasmic enrichment and could be related to increased Pol II dwelling, highlighting additional roles for epigenetic or posttranscriptional modifications to lncRNAs (Zuckerman and Ulitsky, 2019). Interestingly, lncRNAs seem to use nuclear export mechanisms similar to those of mRNAs, such as the TREX, TREX-2, and NXF1 complexes; however, a large proportion of lncRNAs are specifically dependent on NXF1, particularly inefficiently spliced lncRNA transcripts (Zuckerman et al., 2020; Fig. 2).

In contrast to other lncRNAs, circular RNAs (circRNAs), a class of lncRNAs with covalently linked ends, are distinctly enriched in and predominantly found in the cytoplasm (Jeck et al., 2013; Salzman et al., 2012; Wilusz, 2018). circRNAs are formed when pre-mRNAs are “back-spliced,” which occurs when a splice donor site joins an upstream splice acceptor (Wilusz, 2018; see text box). It was demonstrated that the UAP56 (DDX39B) helicase is responsible for the nuclear export of relatively long circRNAs (>800 nt), whereas the URH49 (DDX39A) helicase is responsible for nuclear export of short circRNAs (Huang et al., 2018; Fig. 2). In addition to being exported, their abundance in the cytoplasm can be attributed to their natural resistance to exonuclease activity (Salzman et al., 2012; Wilusz, 2018).

Intriguingly, the rate-limiting step for mRNA transport is thought to be access to and release from the nuclear pore complex (Grünwald and Singer, 2010; Ma et al., 2013), where m6A modification is reported as a fast-track signal for mRNAs (Fazal et al., 2019; Fustin et al., 2013; Roundtree et al., 2017; Zheng et al.,



2013). Recent findings demonstrate that the m6A modification can also increase circRNA export to the cytoplasm (Chen et al., 2019). However, it remains unclear whether localization of lncRNAs is regulated by m6A modification. In a recent study, overexpression of the methyltransferase METTL3 increased nuclear localization of the lncRNA *RPII* (Wu et al., 2019), suggesting that m6A modification may exert different effects on the distribution of mRNAs and lncRNAs. Further studies are required to fully elucidate these potential differences.

Additional important questions remain in regard to the targeting of lncRNAs to organelles in the cytoplasm. A study that found a significant relationship between GC-rich RIDLs and cytoplasmic enrichment also reported that ribosome-associated lncRNAs enriched in polysomal fractions are distinctly capped, have longer 5' UTRs, and are depleted of repetitive elements, which could antagonize polysome binding through interactions with other protein complexes (Carlevaro-Fita et al., 2019; Fig. 2). While nuclear-encoded lncRNAs have been identified in the mitochondria, the sequence features that facilitate mitochondrial import are unexplored. Some evidence describing the import of certain mRNAs with stem loop structures (Wang et al., 2010) suggests that interactions with polynucleotide phosphorylase (PNPase), a protein enriched in the intermembrane space (Chen et al., 2006), may play a role in transport of similar lncRNAs across the membrane. Furthermore, studies showing that mitochondrially encoded lncRNAs are found both in the cytoplasm (Mercer et al., 2011) and in the nucleus (Landerer et al., 2011) open additional questions about whether mitochondrial export or retention is the default pathway for lncRNAs generated from the mitochondrial genome. They also pose the question of how these lncRNAs are shuttled from the mitochondria into the nucleus. A recent study linked aberrant shuttling of lncRNAs from the nucleus to mitochondria (*MALAT1*) and conversely from the mitochondria to the nucleus (*lncCytB*) as a means to enhance cancer cell fitness (Zhao et al., 2019). However, the evidence for anterograde shuttling of *MALAT1* to the mitochondria and retrograde shuttling of *lncCytB* from the mitochondria to the nucleus is not conclusive and has been challenged by previous findings showing that *MALAT1* does not shuttle between the nucleus and the cytoplasm (Miyagawa et al., 2012). Taken together, these studies emphasize the need to obtain a better picture of the factors and rules directing lncRNA localization under homeostatic conditions and in disease. Overall, there is still much to be understood about the set of directions that regulate lncRNA localization, and it is likely that subsets of lncRNAs are governed by distinct instructions.

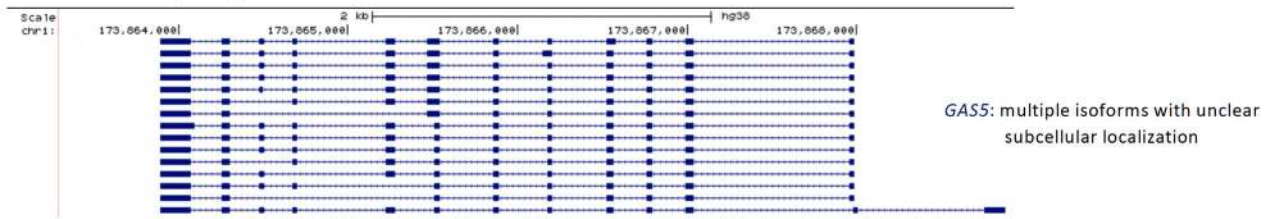
### Considering lncRNA isoforms when assessing localization and function

As discussed, lncRNAs undergo extensive alternative splicing (Deveson et al., 2018; Melé et al., 2017; Tilgner et al., 2012; Zuckerman and Ulitsky, 2019). As a result, the vast majority of lncRNAs appear in multiple isoforms, considerably complicating our understanding of their localization and function (Fig. 3). A number of studies have set out to unravel this critical and mostly overlooked aspect of lncRNA biology. For example, differential localization of transcript isoforms using APEX-RIP followed

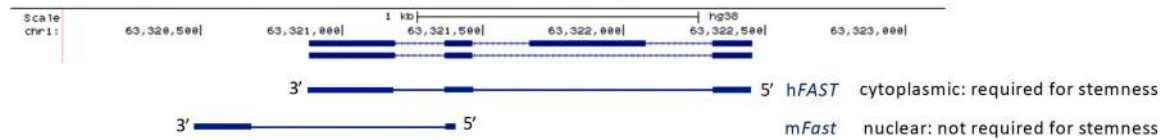
bysequencing has been reported (Fazal et al., 2019), which supports the overall notion that different isoforms of the same gene may display alternative subcellular localization, depending on specific exonic regions that are retained or lost in each isoform. Indeed, transcripts containing transposable element-derived sequences are more enriched in the nucleus, compared with isoforms derived from the same gene locus (Carlevaro-Fita et al., 2019). Additional studies have globally mapped the contribution of alternative spliced variants in lncRNA localization (Zuckerman and Ulitsky, 2019). However, studies that address localization and function of specific lncRNA isoforms are still sparse. For example, it is recognized that the well-studied *GAS5* lncRNA undergoes extensive alternative splicing (Goustin et al., 2019; Zuckerman and Ulitsky, 2019). Independent studies have also shown that *GAS5* localizes both in the cytoplasm and in the nucleus, serving distinct functions (Meng et al., 2020; Renganathan et al., 2014; Yu et al., 2015). However, it is still unclear which of the numerous *GAS5* alternative spliced isoforms contributes to each localization pattern and function (Fig. 3 A), blurring our knowledge and rendering it hard to make conclusions and informed predictions on the function of *GAS5*. Nevertheless, lncRNA isoform-specific studies are gaining traction, shedding light on lncRNA localization and function. For example, the lncRNA *FAST* (*FOXD3-AS1*) is positionally conserved in its sequence, but not conserved in its splicing and localization. The *FAST* isoform expressed in human embryonic stem cells (hESCs), namely h*FAST*, localizes to the cytoplasm (Guo et al., 2020a; Fig. 3 B). This enables its binding to the E3 ubiquitin ligase  $\beta$ -transducin repeats-containing protein (b-TrCP), blocking interaction of b-TrCP with phosphorylated  $\beta$ -catenin, effectively preventing its degradation and activating Wnt signaling. In contrast, in mouse ESCs (mESCs), the mouse isoform m*Fast* is not spliced as efficiently, due to high expression of the splicing factor PPIE that occurs specifically in mESCs, but not in hESCs. As a result, m*Fast* is retained in the nucleus and is not required for pluripotency, unlike h*FAST* (Guo et al., 2020a). Adding to the complexity, distinct lncRNA isoforms may localize in the same subcellular compartment but serve different functions, such as cytoplasmic isoforms of *lncRNA-PXN-AS1* that differentially affect translation of *PXN* (Yuan et al., 2017; Fig. 3 C).

In addition to alternative splicing, differential processing of lncRNA transcripts seems to contribute to distinctive subcellular localizations and functions. For example, the *CCAT1* locus generates two distinct isoforms, with the short isoform (*CCAT-S*) being potentially produced from processing of the 3' end of the long isoform (*CCAT-L*; Xiang et al., 2014). However, the additional sequence that *CCAT-L* possesses in its second exon allows it to accumulate in the nucleus and promote *MYC* expression in cis in colorectal cancer, whereas the *CCAT-S* isoform is mainly cytoplasmic (Kam et al., 2014; Xiang et al., 2014; Fig. 3 D). Furthermore, the extensively studied *NEAT1* lncRNA also undergoes differential processing, due to alternative transcription termination sites, resulting in two isoforms, *NEAT1\_1* and *NEAT1\_2*. *NEAT1\_1* is a shorter, polyadenylated, and more abundant isoform, whereas *NEAT1\_2* expression is cell type specific (Isobe et al., 2020; Li et al., 2017). Interestingly, although localization and function at paraspeckles of both isoforms can be redundant, *NEAT1\_1* also localizes outside paraspeckles, in nuclear

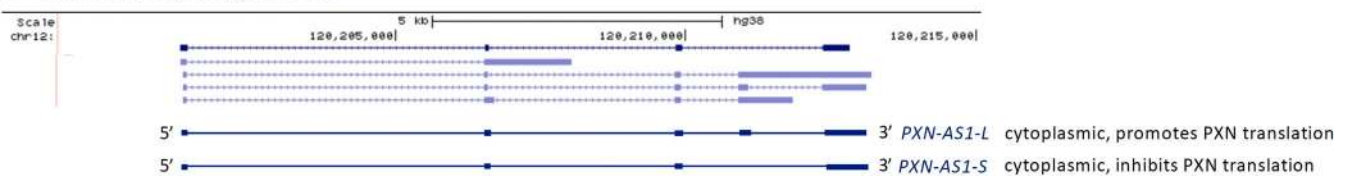
### A Alternative splicing: *GASS5*



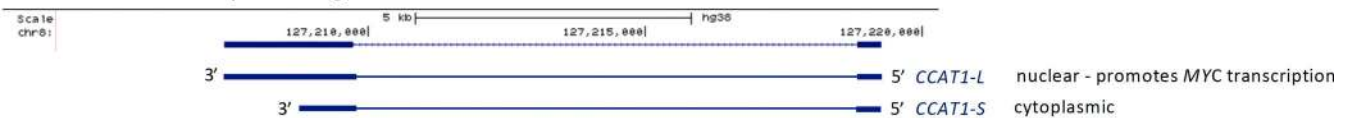
### B Species-specific alternative splicing: *FAST (FOXD3-AS1)*



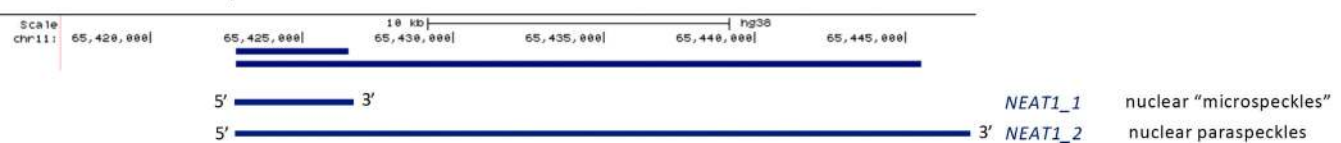
### C Alternative splicing: *PXN-AS1*



### D Alternative 3' end processing: *CCAT1*



### E Alternative transcription termination sites: *NEAT1*



**Figure 3. lncRNAs are alternatively spliced or processed into isoforms with potential for distinct subcellular localization and function.** (A) *GASS5* is an lncRNA that undergoes extensive alternative splicing into multiple isoforms with currently unexplored subcellular localization patterns and functions. (B) The cytoplasmic, human-specific, alternatively spliced variant of *FAST*, *hFAST*, is required for stemness, but not the nuclear, mouse-specific, *mFast* variant. (C) Alternative splicing of *PXN-AS1* results in two cytoplasmic isoforms that promote (*PXN-AS1-L*) or inhibit (*PXN-AS1-S*) *PXN* translation. (D) Alternative 3' end processing of *CCAT1* generates a nuclear specific isoform that promotes *MYC* transcription (*CCAT1-L*) or a shorter one that is exported to the cytoplasm (*CCAT1-S*). (E) Due to alternative transcription termination sites, the *NEAT1* lncRNA exists in two isoforms: a shorter, polyadenylated, and abundant *NEAT1\_1* isoform localizes in nuclear foci distinct from paraspeckles termed microspeckles, and a longer, cell type-specific and paraspeckle-specific, *NEAT1\_2* isoform. Background genomic and transcript information were obtained through the University of California, Santa Cruz, Genome Browser (GRCh38/hg38 assembly). Specific isoforms discussed in the text are designed in each case with their referenced names and subcellular localization.

foci termed “microspeckles,” implying paraspeckle-independent functions (Isobe et al., 2020; Li et al., 2017; Fig. 3 E). Therefore, alternative lncRNA processing may instruct both cell type-specific expression and alternative localization and function.

The above, still limited, examples, taken together with the fact that the vast majority of lncRNAs undergo extensive alternative splicing and posttranscriptional processing, further underscore that we have only seen the tip of the iceberg in lncRNA biology: the existence of multiple isoforms for each lncRNA, together with their potential to be differentially localized within the cell and the distinct functional significance of their subcellular localization,

suggests that the actual contribution of lncRNAs to numerous cellular functions has been vastly underappreciated. In fact, the majority of studies have largely overlooked the role of isoforms as a critical aspect of lncRNA biology, at least until recently, which begs for expansion of lncRNA studies to always specify isoforms as a key element to assess lncRNA function.

### Conclusion

Cumulatively, current evidence on lncRNA localization, but also existing gaps in the knowledge, can altogether be summarized into two key take-home messages: (a) subcellular localization of lncRNAs

is an additional essential layer of complexity that is required to be taken into account to fully understand the roles of lncRNAs in any cellular function; and (b) we are still scratching the surface on this aspect of lncRNA biology. Beyond the obvious basic science questions regarding lncRNA function, determining localization patterns of lncRNAs is key for another major reason: they may dictate choosing of the proper approach to manipulate them, either for basic research or for clinical purposes. For example, it is well documented that subcellular localization of lncRNAs is crucial to determine whether to target them using either RNAi or antisense oligonucleotides (Lennox and Behlke, 2016). Antisense oligonucleotides have proven to be more effective in targeting nuclear-localized lncRNAs, whereas RNAi-based methodologies are more appropriate to target cytoplasmic ones (Lennox and Behlke, 2016). In addition, the advent of lncRNA-based therapeutics (Adams et al., 2017; Zucchelli et al., 2015) makes it even more critical to fully understand the biology of each of these lncRNAs, including their subcellular localization, since this would affect both targeting efficacy and the potential of adverse side effects. These are challenges that need to be addressed in the years to come. However, the above also open new avenues of investigation in lncRNA biology that can significantly enrich our knowledge on numerous cellular functions and diseases and provide new opportunities for the development of specific and potent novel therapeutic approaches. The current pace of progress in the still relatively young field of lncRNA biology and the increased attention on the importance of the subcellular localization of these molecules in numerous biological functions lay the groundwork for more exciting discoveries.

## Acknowledgments

Figures 1 and 2 were created using BioRender.com. We apologize to all our colleagues whose work could not be cited due to content and space limitations.

A. Kourtidis was supported by National Institutes of Health grants P20 GM130457-01A1, R21 CA246233-01A1, and P30 DK123704-01; M.C. Bridges was supported by National Institutes of Health training grants TLI TRO01451 and UL1 TRO01450.

The authors declare no competing financial interests.

Author contributions: M.C. Bridges and A. Kourtidis conceived and wrote the manuscript; A.C. Daulagala conceived and designed figures. All authors read, edited, and approved the manuscript.

Submitted: 14 September 2020

Revised: 20 December 2020

Accepted: 23 December 2020

## References

Adams, B.D., C. Parsons, L. Walker, W.C. Zhang, and F.J. Slack. 2017. Targeting noncoding RNAs in disease. *J. Clin. Invest.* 127:761–771. <https://doi.org/10.1172/JCI84424>

Ahadi, A., S. Brennan, P.J. Kennedy, G. Hutvagner, and N. Tran. 2016. Long non-coding RNAs harboring miRNA seed regions are enriched in prostate cancer exosomes. *Sci. Rep.* 6:24922. <https://doi.org/10.1038/srep24922>

Ahn, J.H., H.S. Lee, J.S. Lee, Y.S. Lee, J.L. Park, S.Y. Kim, J.A. Hwang, N. Kunkeaw, S.Y. Jung, T.J. Kim, et al. 2018. nc886 is induced by TGF- $\beta$  and

suppresses the microRNA pathway in ovarian cancer. *Nat. Commun.* 9: 1166. <https://doi.org/10.1038/s41467-018-03556-7>

Amaral, P.P., T. Leonardi, N. Han, E. Viré, D.K. Gascoigne, R. Arias-Carrasco, M. Büscher, L. Pandolfini, A. Zhang, S. Pluchino, et al. 2018. Genomic positional conservation identifies topological anchor point RNAs linked to developmental loci. *Genome Biol.* 19:32. <https://doi.org/10.1186/s13059-018-1405-5>

Anderson, D.M., K.M. Anderson, C.L. Chang, C.A. Makarewich, B.R. Nelson, J.R. McAnally, P. Kasaragod, J.M. Shelton, J. Liou, R. Bassel-Duby, and E.N. Olson. 2015. A micropeptide encoded by a putative long noncoding RNA regulates muscle performance. *Cell.* 160:595–606. <https://doi.org/10.1016/j.cell.2015.01.009>

Anderson, P., and N. Kedersha. 2009. RNA granules: post-transcriptional and epigenetic modulators of gene expression. *Nat. Rev. Mol. Cell Biol.* 10: 430–436. <https://doi.org/10.1038/nrm2694>

Arora, R., Y. Lee, H. Wischniewski, C.M. Brun, T. Schwarz, and C.M. Azzalin. 2014. RNaseH1 regulates TERRA-telomeric DNA hybrids and telomere maintenance in ALT tumour cells. *Nat. Commun.* 5:5220. <https://doi.org/10.1038/ncomms6220>

Aulas, A., M.M. Fay, S.M. Lyons, C.A. Achorn, N. Kedersha, P. Anderson, and P. Ivanov. 2017. Stress-specific differences in assembly and composition of stress granules and related foci. *J. Cell Sci.* 130:927–937. <https://doi.org/10.1242/jcs.199240>

Aznaourova, M., H. Janga, S. Sefried, A. Kaufmann, J. Dorna, S.M. Volkers, P. Georg, M. Lechner, J. Hoppe, S. Dökel, et al. 2020. Noncoding RNA *MalI* is an integral component of the TLR4-TRIF pathway. *Proc. Natl. Acad. Sci. USA.* 117:9042–9053. <https://doi.org/10.1073/pnas.1920393117>

Ballarino, M., M. Morlando, A. Fatica, and I. Bozzoni. 2016. Non-coding RNAs in muscle differentiation and musculoskeletal disease. *J. Clin. Invest.* 126: 2021–2030. <https://doi.org/10.1172/JCI84419>

Banani, S.F., H.O. Lee, A.A. Hyman, and M.K. Rosen. 2017. Biomolecular condensates: organizers of cellular biochemistry. *Nat. Rev. Mol. Cell Biol.* 18:285–298. <https://doi.org/10.1038/nrm.2017.7>

Bánfai, B., H. Jia, J. Khatun, E. Wood, B. Risk, W.E. Gundling Jr., A. Kundaje, H.P. Gunawardena, Y. Yu, L. Xie, et al. 2012. Long noncoding RNAs are rarely translated in two human cell lines. *Genome Res.* 22:1646–1657. <https://doi.org/10.1101/gr.134767.111>

Beaulieu, Y.B., C.L. Kleinman, A.M. Landry-Voyer, J. Majewski, and F. Bachand. 2012. Polyadenylation-dependent control of long noncoding RNA expression by the poly(A)-binding protein nuclear 1. *PLoS Genet.* 8: e1003078. <https://doi.org/10.1371/journal.pgen.1003078>

Benhalevy, D., D.G. Anastasakis, and M. Hafner. 2018. Proximity-CLIP provides a snapshot of protein-occupied RNA elements in subcellular compartments. *Nat. Methods.* 15:1074–1082. <https://doi.org/10.1038/s41592-018-0220-y>

Benoit Bouvrette, L.P., N.A.L. Cody, J. Bergalet, F.A. Lefebvre, C. Diot, X. Wang, M. Blanchette, and E. Lécuyer. 2018. CeFra-seq reveals broad asymmetric mRNA and noncoding RNA distribution profiles in *Drosophila* and human cells. *RNA.* 24:98–113. <https://doi.org/10.1261/rna.063172.117>

Berrondo, C., J. Flax, V. Kucherov, A. Siebert, T. Osinski, A. Rosenberg, C. Fucile, S. Richheimer, and C.J. Beckham. 2016. Expression of the Long Non-Coding RNA HOTAIR Correlates with Disease Progression in Bladder Cancer and Is Contained in Bladder Cancer Patient Urinary Exosomes. *PLoS One.* 11:e0147236. <https://doi.org/10.1371/journal.pone.0147236>

Bolukbasi, M.F., A. Mizrak, G.B. Ozdener, S. Madlener, T. Ströbel, E.P. Erkan, J.B. Fan, X.O. Breakefield, and O. Saydam. 2012. miR-1289 and “Zipcode”-like Sequence Enrich mRNAs in Microvesicles. *Mol. Ther. Nucleic Acids.* 1:e10. <https://doi.org/10.1038/mtna.2011.2>

Brangwynne, C.P., C.R. Eckmann, D.S. Courson, A. Rybarska, C. Hoegge, J. Gharakhani, F. Jülicher, and A.A. Hyman. 2009. Germline P granules are liquid droplets that localize by controlled dissolution/condensation. *Science.* 324:1729–1732. <https://doi.org/10.1126/science.1172046>

Brazão, T.F., J.S. Johnson, J. Müller, A. Heger, C.P. Ponting, and V.L. Tybulewicz. 2016. Long noncoding RNAs in B-cell development and activation. *Blood.* 128:e10–e19. <https://doi.org/10.1182/blood-2015-11-680843>

Bresson, S.M., O.V. Hunter, A.C. Hunter, and N.K. Conrad. 2015. Canonical Poly(A) Polymerase Activity Promotes the Decay of a Wide Variety of Mammalian Nuclear RNAs. *PLoS Genet.* 11:e1005610. <https://doi.org/10.1371/journal.pgen.1005610>

Brown, J.A., M.L. Valenstein, T.A. Yario, K.T. Tycowski, and J.A. Steitz. 2012. Formation of triple-helical structures by the 3'-end sequences of MALAT1 and MEN $\beta$  noncoding RNAs. *Proc. Natl. Acad. Sci. USA.* 109: 19202–19207. <https://doi.org/10.1073/pnas.1217338109>

- Buxbaum, A.R., G. Haimovich, and R.H. Singer. 2015. In the right place at the right time: visualizing and understanding mRNA localization. *Nat. Rev. Mol. Cell Biol.* 16:95–109. <https://doi.org/10.1038/nrm3918>
- Cabili, M.N., M.C. Dunagin, P.D. McClanahan, A. Biaisch, O. Padovan-Merhar, A. Regev, J.L. Rinn, and A. Raj. 2015. Localization and abundance analysis of human lncRNAs at single-cell and single-molecule resolution. *Genome Biol.* 16:20. <https://doi.org/10.1186/s13059-015-0586-4>
- Carlevaro-Fita, J., T. Polidori, M. Das, C. Navarro, T.I. Zoller, and R. Johnson. 2019. Ancient exapted transposable elements promote nuclear enrichment of human long noncoding RNAs. *Genome Res.* 29:208–222. <https://doi.org/10.1101/gr.229922.117>
- Carlevaro-Fita, J., A. Rahim, R. Guigó, L.A. Vardy, and R. Johnson. 2016. Cytoplasmic long noncoding RNAs are frequently bound to and degraded at ribosomes in human cells. *RNA.* 22:867–882. <https://doi.org/10.1261/rna.053561.115>
- Carrieri, C., L. Cimatti, M. Biagioli, A. Beugnet, S. Zucchelli, S. Fedele, E. Pesce, I. Ferrer, L. Collavin, C. Santoro, et al. 2012. Long non-coding antisense RNA controls Uchl1 translation through an embedded SINEB2 repeat. *Nature.* 491:454–457. <https://doi.org/10.1038/nature11508>
- Cesana, M., D. Cacchiarelli, I. Legnini, T. Santini, O. Sthandier, M. Chinappi, A. Tramontano, and I. Bozzoni. 2011. A long noncoding RNA controls muscle differentiation by functioning as a competing endogenous RNA. *Cell.* 147:358–369. <https://doi.org/10.1016/j.cell.2011.09.028>
- Cha, D.J., J.L. Franklin, Y. Dou, Q. Liu, J.N. Higginbotham, M. Demory Beckler, A.M. Weaver, K. Vickers, N. Prasad, S. Levy, et al. 2015. KRAS-dependent sorting of miRNA to exosomes. *eLife.* 4:e07197. <https://doi.org/10.7554/eLife.07197>
- Chen, H.W., R.N. Rainey, C.E. Balatoni, D.W. Dawson, J.J. Troke, S. Wasiak, J.S. Hong, H.M. McBride, C.M. Koehler, M.A. Teitell, and S.W. French. 2006. Mammalian polynucleotide phosphorylase is an intermembrane space RNase that maintains mitochondrial homeostasis. *Mol. Cell Biol.* 26:8475–8487. <https://doi.org/10.1128/MCB.01002-06>
- Chen, J., A.D. Brunner, J.Z. Cogan, J.K. Nuñez, A.P. Fields, B. Adamson, D.N. Itzhak, J.Y. Li, M. Mann, M.D. Leonetti, and J.S. Weissman. 2020. Pervasive functional translation of noncanonical human open reading frames. *Science.* 367:1140–1146. <https://doi.org/10.1126/science.aay0262>
- Chen, K.H., A.N. Boettiger, J.R. Moffitt, S. Wang, and X. Zhuang. 2015. RNA imaging. Spatially resolved, highly multiplexed RNA profiling in single cells. *Science.* 348:aaa6090. <https://doi.org/10.1126/science.aaa6090>
- Chen, L.L. 2016. Linking Long Noncoding RNA Localization and Function. *Trends Biochem. Sci.* 41:761–772. <https://doi.org/10.1016/j.tibs.2016.07.003>
- Chen, L.L., and G.G. Carmichael. 2009. Altered nuclear retention of mRNAs containing inverted repeats in human embryonic stem cells: functional role of a nuclear noncoding RNA. *Mol. Cell.* 35:467–478. <https://doi.org/10.1016/j.molcel.2009.06.027>
- Chen, M., R. Xu, H. Ji, D.W. Greening, A. Rai, K. Izumikawa, H. Ishikawa, N. Takahashi, and R.J. Simpson. 2016. Transcriptome and long noncoding RNA sequencing of three extracellular vesicle subtypes released from the human colon cancer LIM1863 cell line. *Sci. Rep.* 6:38397. <https://doi.org/10.1038/srep38397>
- Chen, R.X., X. Chen, L.P. Xia, J.X. Zhang, Z.Z. Pan, X.D. Ma, K. Han, J.W. Chen, J.G. Judde, O. Deas, et al. 2019. N<sup>6</sup>-methyladenosine modification of circNSUN2 facilitates cytoplasmic export and stabilizes HMGA2 to promote colorectal liver metastasis. *Nat. Commun.* 10:4695. <https://doi.org/10.1038/s41467-019-12651-2>
- Chew, G.L., A. Pauli, J.L. Rinn, A. Regev, A.F. Schier, and E. Valen. 2013. Ribosome profiling reveals resemblance between long non-coding RNAs and 5' leaders of coding RNAs. *Development.* 140:2828–2834. <https://doi.org/10.1242/dev.098343>
- Chillón, I., and A.M. Pyle. 2016. Inverted repeat Alu elements in the human lincRNA-p21 adopt a conserved secondary structure that regulates RNA function. *Nucleic Acids Res.* 44:9462–9471.
- Clark, M.B., R.L. Johnston, M. Inostroza-Ponta, A.H. Fox, E. Fortini, P. Moscato, M.E. Dinger, and J.S. Mattick. 2012. Genome-wide analysis of long noncoding RNA stability. *Genome Res.* 22:885–898. <https://doi.org/10.1101/gr.131037.111>
- Clemson, C.M., J.N. Hutchinson, S.A. Sara, A.W. Ensminger, A.H. Fox, A. Chess, and J.B. Lawrence. 2009. An architectural role for a nuclear noncoding RNA: NEAT1 RNA is essential for the structure of paraspeckles. *Mol. Cell.* 33:717–726. <https://doi.org/10.1016/j.molcel.2009.01.026>
- Clemson, C.M., J.A. McNeil, H.F. Willard, and J.B. Lawrence. 1996. XIST RNA paints the inactive X chromosome at interphase: evidence for a novel RNA involved in nuclear/chromosome structure. *J. Cell Biol.* 132:259–275. <https://doi.org/10.1083/jcb.132.3.259>
- Corradi, E., I. Dalla Costa, A. Gavoci, A. Iyer, M. Rocuzzo, T.A. Otto, E. Oliani, S. Bridi, S. Strohbuecker, G. Santos-Rodriguez, et al. 2020. Axonal precursor miRNAs hitchhike on endosomes and locally regulate the development of neural circuits. *EMBO J.* 39:e102513. <https://doi.org/10.15252/emboj.2019102513>
- Courchaine, E.M., A. Lu, and K.M. Neugebauer. 2016. Droplet organelles? *EMBO J.* 35:1603–1612. <https://doi.org/10.15252/emboj.201593517>
- Delás, M.J., L.R. Sabin, E. Dolzhenko, S.R. Knott, E. Munera Maravilla, B.T. Jackson, S.A. Wild, T. Kovacevic, E.M. Stork, M. Zhou, et al. 2017. lncRNA requirements for mouse acute myeloid leukemia and normal differentiation. *eLife.* 6:e25607. <https://doi.org/10.7554/eLife.25607>
- Derrien, T., R. Johnson, G. Bussotti, A. Tanzer, S. Djebali, H. Tilgner, G. Guernec, D. Martin, A. Merkel, D.G. Knowles, et al. 2012. The GENCODE v7 catalog of human long noncoding RNAs: analysis of their gene structure, evolution, and expression. *Genome Res.* 22:1775–1789. <https://doi.org/10.1101/gr.132159.111>
- Deveson, I.W., M.E. Brunck, J. Blackburn, E. Tseng, T. Hon, T.A. Clark, M.B. Clark, J. Crawford, M.E. Dinger, L.K. Nielsen, et al. 2018. Universal Alternative Splicing of Noncoding Exons. *Cell Syst.* 6:245–255.e5. <https://doi.org/10.1016/j.cels.2017.12.005>
- Djebali, S., C.A. Davis, A. Merkel, A. Dobin, T. Lassmann, A. Mortazavi, A. Tanzer, J. Lagarde, W. Lin, F. Schlesinger, et al. 2012. Landscape of transcription in human cells. *Nature.* 489:101–108. <https://doi.org/10.1038/nature11233>
- Dong, L., W. Lin, P. Qi, M.D. Xu, X. Wu, S. Ni, D. Huang, W.W. Weng, C. Tan, W. Sheng, et al. 2016. Circulating Long RNAs in Serum Extracellular Vesicles: Their Characterization and Potential Application as Biomarkers for Diagnosis of Colorectal Cancer. *Cancer Epidemiol. Biomarkers Prev.* 25:1158–1166. <https://doi.org/10.1158/1055-9965.EPI-16-0006>
- Du, Z., T. Sun, E. Hacisuleyman, T. Fei, X. Wang, M. Brown, J.L. Rinn, M.G. Lee, Y. Chen, P.W. Kantoff, and X.S. Liu. 2016. Integrative analyses reveal a long noncoding RNA-mediated sponge regulatory network in prostate cancer. *Nat. Commun.* 7:10982. <https://doi.org/10.1038/ncomms10982>
- ENCODE Project Consortium; Birney, E., J.A. Stamatoyannopoulos, A. Dutta, R. Guigó, T.R. Gingeras, E.H. Margulies, Z. Weng, M. Snyder, E.T. Dermitzakis, R.E. Thurman, et al. 2007. Identification and analysis of functional elements in 1% of the human genome by the ENCODE pilot project. *Nature.* 447:799–816. <https://doi.org/10.1038/nature05874>
- Esteller, M. 2011. Non-coding RNAs in human disease. *Nat. Rev. Genet.* 12:861–874. <https://doi.org/10.1038/nrg3074>
- Fay, M.M., P.J. Anderson, and P. Ivanov. 2017. ALS/FTD-Associated C9ORF72 Repeat RNA Promotes Phase Transitions In Vitro and in Cells. *Cell Rep.* 21:3573–3584. <https://doi.org/10.1016/j.celrep.2017.11.093>
- Fazal, F.M., S. Han, K.R. Parker, P. Kaewsapsak, J. Xu, A.N. Boettiger, H.Y. Chang, and A.Y. Ting. 2019. Atlas of Subcellular RNA Localization Revealed by APEX-Seq. *Cell.* 178:473–490.e26. <https://doi.org/10.1016/j.cell.2019.05.027>
- Fernandez-Moya, S.M., K.E. Bauer, and M.A. Kiebler. 2014. Meet the players: local translation at the synapse. *Front. Mol. Neurosci.* 7:84. <https://doi.org/10.3389/fnmol.2014.00084>
- Fustin, J.M., M. Doi, Y. Yamaguchi, H. Hida, S. Nishimura, M. Yoshida, T. Isagawa, M.S. Morioka, H. Kakeya, I. Manabe, and H. Okamura. 2013. RNA-methylation-dependent RNA processing controls the speed of the circadian clock. *Cell.* 155:793–806. <https://doi.org/10.1016/j.cell.2013.10.026>
- Gezer, U., E. Özgür, M. Cetinkaya, M. Isin, and N. Dalay. 2014. Long non-coding RNAs with low expression levels in cells are enriched in secreted exosomes. *Cell Biol. Int.* 38:1076–1079. <https://doi.org/10.1002/cbin.10301>
- Gilks, N., N. Kedersha, M. Ayodele, L. Shen, G. Stoeklin, L.M. Dember, and P. Anderson. 2004. Stress granule assembly is mediated by prion-like aggregation of TIA-1. *Mol. Biol. Cell.* 15:5383–5398. <https://doi.org/10.1091/mbc.e04-08-0715>
- Goldfarb, K.C., and T.R. Cech. 2017. Targeted CRISPR disruption reveals a role for RNase MRP RNA in human preribosomal RNA processing. *Genes Dev.* 31:59–71. <https://doi.org/10.1101/gad.286963.116>
- Gong, C., and L.E. Maquat. 2011. lncRNAs transactivate STAU1-mediated mRNA decay by duplexing with 3' UTRs via Alu elements. *Nature.* 470:284–288. <https://doi.org/10.1038/nature09701>
- Goustin, A.S., P. Thepsuwan, M.A. Kosir, and L. Lipovich. 2019. The Growth-Arrest-Specific (GAS)-5 Long Non-Coding RNA: A Fascinating lncRNA Widely Expressed in Cancers. *Noncoding RNA.* 5:46. <https://doi.org/10.3390/nrna5030046>
- Grelet, S., L.A. Link, B. Howley, C. Obellianne, V. Palanisamy, V.K. Gangaraju, J.A. Diehl, and P.H. Howe. 2017. A regulated PNUMS mRNA to lncRNA

- splice switch mediates EMT and tumour progression. *Nat. Cell Biol.* 19: 1105–1115. <https://doi.org/10.1038/ncb3595>
- Grünwald, D., and R.H. Singer. 2010. In vivo imaging of labelled endogenous  $\beta$ -actin mRNA during nucleocytoplasmic transport. *Nature.* 467: 604–607. <https://doi.org/10.1038/nature09438>
- Guo, C.J., X.K. Ma, Y.H. Xing, C.C. Zheng, Y.F. Xu, L. Shan, J. Zhang, S. Wang, Y. Wang, G.G. Carmichael, et al. 2020a. Distinct Processing of lncRNAs Contributes to Non-conserved Functions in Stem Cells. *Cell.* 181: 621–636.e22. <https://doi.org/10.1016/j.cell.2020.03.006>
- Guo, C.J., G. Xu, and L.L. Chen. 2020b. Mechanisms of Long Noncoding RNA Nuclear Retention. *Trends Biochem. Sci.* 45:947–960. <https://doi.org/10.1016/j.tibs.2020.07.001>
- Guttman, M., and J.L. Rinn. 2012. Modular regulatory principles of large non-coding RNAs. *Nature.* 482:339–346. <https://doi.org/10.1038/nature10887>
- Guttman, M., P. Russell, N.T. Ingolia, J.S. Weissman, and E.S. Lander. 2013. Ribosome profiling provides evidence that large noncoding RNAs do not encode proteins. *Cell.* 154:240–251. <https://doi.org/10.1016/j.cell.2013.06.009>
- Hacisuleyman, E., L.A. Goff, C. Trapnell, A. Williams, J. Henao-Mejia, L. Sun, P. McClanahan, D.G. Hendrickson, M. Sauvageau, D.R. Kelley, et al. 2014. Topological organization of multichromosomal regions by the long intergenic noncoding RNA Firre. *Nat. Struct. Mol. Biol.* 21:198–206. <https://doi.org/10.1038/nsmb.2764>
- Hangauer, M.J., I.W. Vaughn, and M.T. McManus. 2013. Pervasive transcription of the human genome produces thousands of previously unidentified long intergenic noncoding RNAs. *PLoS Genet.* 9:e1003569. <https://doi.org/10.1371/journal.pgen.1003569>
- Hengst, U., L.J. Cox, E.Z. Macosko, and S.R. Jaffrey. 2006. Functional and selective RNA interference in developing axons and growth cones. *J. Neurosci.* 26:5727–5732. <https://doi.org/10.1523/JNEUROSCI.5229-05.2006>
- Hezroni, H., D. Koppstein, M.G. Schwartz, A. Avrutin, D.P. Bartel, and I. Ulitsky. 2015. Principles of long noncoding RNA evolution derived from direct comparison of transcriptomes in 17 species. *Cell Rep.* 11:1110–1122. <https://doi.org/10.1016/j.celrep.2015.04.023>
- Hirose, T., G. Virmicchi, A. Tanigawa, T. Naganuma, R. Li, H. Kimura, T. Yokoi, S. Nakagawa, M. Bénard, A.H. Fox, and G. Pierron. 2014. NEAT1 long noncoding RNA regulates transcription via protein sequestration within subnuclear bodies. *Mol. Biol. Cell.* 25:169–183. <https://doi.org/10.1091/mbc.e13-09-0558>
- Hocine, S., R.H. Singer, and D. Grünwald. 2010. RNA processing and export. *Cold Spring Harb. Perspect. Biol.* 2:a000752. <https://doi.org/10.1101/cshperspect.a000752>
- Huang, C., D. Liang, D.C. Tatomer, and J.E. Wilusz. 2018. A length-dependent evolutionarily conserved pathway controls nuclear export of circular RNAs. *Genes Dev.* 32:639–644. <https://doi.org/10.1101/gad.314856.118>
- Huang, J.Z., M. Chen, D. Chen, X.C. Gao, S. Zhu, H. Huang, M. Hu, H. Zhu, and G.R. Yan. 2017. A Peptide Encoded by a Putative lncRNA HOXB-AS3 Suppresses Colon Cancer Growth. *Mol. Cell.* 68:171–184.e6. <https://doi.org/10.1016/j.molcel.2017.09.015>
- Huang, X., T. Yuan, M. Tschannen, Z. Sun, H. Jacob, M. Du, M. Liang, R.L. Dittmar, Y. Liu, M. Liang, et al. 2013. Characterization of human plasma-derived exosomal RNAs by deep sequencing. *BMC Genomics.* 14: 319. <https://doi.org/10.1186/1471-2164-14-319>
- Hubstenberger, A., M. Courel, M. Bénard, S. Souquere, M. Ernault-Lange, R. Chouaib, Z. Yi, J.B. Morlot, A. Munier, M. Fradet, et al. 2017. P-Body Purification Reveals the Condensation of Repressed mRNA Regulators. *Mol. Cell.* 68:144–157.e5. <https://doi.org/10.1016/j.molcel.2017.09.003>
- Hutchinson, J.N., A.W. Ensminger, C.M. Clemson, C.R. Lynch, J.B. Lawrence, and A. Chess. 2007. A screen for nuclear transcripts identifies two linked noncoding RNAs associated with SC35 splicing domains. *BMC Genomics.* 8:39. <https://doi.org/10.1186/1471-2164-8-39>
- Iempridee, T. 2017. Long non-coding RNA H19 enhances cell proliferation and anchorage-independent growth of cervical cancer cell lines. *Exp. Biol. Med. (Maywood)*. 242:184–193. <https://doi.org/10.1177/1535370216670542>
- Imamura, K., N. Imamachi, G. Akizuki, M. Kumakura, A. Kawaguchi, K. Nagata, A. Kato, Y. Kawaguchi, H. Sato, M. Yoneda, et al. 2014. Long noncoding RNA NEAT1-dependent SFPQ relocation from promoter region to paraspeckle mediates IL8 expression upon immune stimuli. *Mol. Cell.* 53:393–406. <https://doi.org/10.1016/j.molcel.2014.01.009>
- Ingolia, N.T., L.F. Lareau, and J.S. Weissman. 2011. Ribosome profiling of mouse embryonic stem cells reveals the complexity and dynamics of mammalian proteomes. *Cell.* 147:789–802. <https://doi.org/10.1016/j.cell.2011.10.002>
- Isobe, M., H. Toya, M. Mito, T. Chiba, H. Asahara, T. Hirose, and S. Nakagawa. 2020. Forced isoform switching of Neat1\_1 to Neat1\_2 leads to the loss of Neat1\_1 and the hyperformation of paraspeckles but does not affect the development and growth of mice. *RNA.* 26:251–264. <https://doi.org/10.1261/rna.072587.119>
- Ivanov, P., N. Kedersha, and P. Anderson. 2019. Stress Granules and Processing Bodies in Translational Control. *Cold Spring Harb. Perspect. Biol.* 11:a032813. <https://doi.org/10.1101/cshperspect.a032813>
- Iyer, M.K., Y.S. Niknafs, R. Malik, U. Singhal, A. Sahu, Y. Hosono, T.R. Barrette, J.R. Prensner, J.R. Evans, S. Zhao, et al. 2015. The landscape of long noncoding RNAs in the human transcriptome. *Nat. Genet.* 47:199–208. <https://doi.org/10.1038/ng.3192>
- Jakymiw, A., S. Lian, T. Eystathiou, S. Li, M. Satoh, J.C. Hamel, M.J. Fritzler, and E.K. Chan. 2005. Disruption of GW bodies impairs mammalian RNA interference. *Nat. Cell Biol.* 7:1267–1274. <https://doi.org/10.1038/ncb1334>
- Jakymiw, A., K.M. Pauley, S. Li, K. Ikeda, S. Lian, T. Eystathiou, M. Satoh, M.J. Fritzler, and E.K. Chan. 2007. The role of GW/P-bodies in RNA processing and silencing. *J. Cell Sci.* 120:1317–1323. <https://doi.org/10.1242/jcs.03429>
- Jeck, W.R., J.A. Sorrentino, K. Wang, M.K. Slevin, C.E. Burd, J. Liu, W.F. Marzluff, and N.E. Sharpless. 2013. Circular RNAs are abundant, conserved, and associated with ALU repeats. *RNA.* 19:141–157. <https://doi.org/10.1261/rna.035667.112>
- Jeffery, W.R. 1984. Spatial distribution of messenger RNA in the cytoskeletal framework of ascidian eggs. *Dev. Biol.* 103:482–492. [https://doi.org/10.1016/0012-1606\(84\)90335-X](https://doi.org/10.1016/0012-1606(84)90335-X)
- Jeffery, W.R. 1989. Localized mRNA and the egg cytoskeleton. *Int. Rev. Cytol.* 119:151–195. [https://doi.org/10.1016/S0074-7696\(08\)60651-8](https://doi.org/10.1016/S0074-7696(08)60651-8)
- Jiang, L., C. Shao, Q.J. Wu, G. Chen, J. Zhou, B. Yang, H. Li, L.T. Gou, Y. Zhang, Y. Wang, et al. 2017. NEAT1 scaffolds RNA-binding proteins and the Microprocessor to globally enhance pri-miRNA processing. *Nat. Struct. Mol. Biol.* 24:816–824. <https://doi.org/10.1038/nsmb.3455>
- Johnson, R., and R. Guigó. 2014. The RIDL hypothesis: transposable elements as functional domains of long noncoding RNAs. *RNA.* 20:959–976. <https://doi.org/10.1261/rna.044560.114>
- Kaewwatsak, P., D.M. Shechner, W. Mallard, J.L. Rinn, and A.Y. Ting. 2017. Live-cell mapping of organelle-associated RNAs via proximity biotinylation combined with protein-RNA crosslinking. *eLife.* 6:e29224. <https://doi.org/10.7554/eLife.29224>
- Kam, Y., A. Rubinstein, S. Naik, I. Djavsarov, D. Halle, I. Ariel, A.O. Gure, A. Stojadinovic, H. Pan, V. Tsivin, et al. 2014. Detection of a long non-coding RNA (CCAT1) in living cells and human adenocarcinoma of colon tissues using FIT-PNA molecular beacons. *Cancer Lett.* 352:90–96. <https://doi.org/10.1016/j.canlet.2013.02.014>
- Kapranov, P., A.T. Willingham, and T.R. Gingeras. 2007. Genome-wide transcription and the implications for genomic organization. *Nat. Rev. Genet.* 8:413–423. <https://doi.org/10.1038/nrg2083>
- Kedersha, N., G. Stoecklin, M. Ayodele, P. Yacono, J. Lykke-Andersen, M.J. Fritzler, D. Scheuner, R.J. Kaufman, D.E. Golan, and P. Anderson. 2005. Stress granules and processing bodies are dynamically linked sites of mRNP remodeling. *J. Cell Biol.* 169:871–884. <https://doi.org/10.1083/jcb.200502088>
- Khalil, A.M., M. Guttman, M. Huarte, M. Garber, A. Raj, D. Rivea Morales, K. Thomas, A. Presser, B.E. Bernstein, A. van Oudenaarden, et al. 2009. Many human large intergenic noncoding RNAs associate with chromatin-modifying complexes and affect gene expression. *Proc. Natl. Acad. Sci. USA.* 106:11667–11672. <https://doi.org/10.1073/pnas.0904715106>
- Khong, A., T. Matheny, S. Jain, S.F. Mitchell, J.R. Wheeler, and R. Parker. 2017. The Stress Granule Transcriptome Reveals Principles of mRNA Accumulation in Stress Granules. *Mol. Cell.* 68:808–820.e5. <https://doi.org/10.1016/j.molcel.2017.10.015>
- Kitagawa, M., K. Kitagawa, Y. Kotake, H. Niida, and T. Ohhata. 2013. Cell cycle regulation by long non-coding RNAs. *Cell. Mol. Life Sci.* 70: 4785–4794. <https://doi.org/10.1007/s00018-013-1423-0>
- Kleaveland, B., C.Y. Shi, J. Stefano, and D.P. Bartel. 2018. A Network of Noncoding Regulatory RNAs Acts in the Mammalian Brain. *Cell.* 174: 350–362.e17. <https://doi.org/10.1016/j.cell.2018.05.022>
- Kogure, T., I.K. Yan, W.L. Lin, and T. Patel. 2013. Extracellular Vesicle-Mediated Transfer of a Novel Long Noncoding RNA TUC339: A Mechanism of Intercellular Signaling in Human Hepatocellular Cancer. *Genes Cancer.* 4:261–272. <https://doi.org/10.1177/1947601913499020>
- Koldemir, O., E. Özgür, and U. Gezer. 2017. Accumulation of GAS5 in exosomes is a marker of apoptosis induction. *Biomed. Rep.* 6:358–362. <https://doi.org/10.3892/br.2017.848>

- Kourtidis, A., B. Necela, W.H. Lin, R. Lu, R.W. Feathers, Y.W. Asmann, E.A. Thompson, and P.Z. Anastasiadis. 2017. Cadherin complexes recruit mRNAs and RISC to regulate epithelial cell signaling. *J. Cell Biol.* 216: 3073–3085. <https://doi.org/10.1083/jcb.201612125>
- Kourtidis, A., S.P. Ngok, P. Pulimeno, R.W. Feathers, L.R. Carpio, T.R. Baker, J.M. Carr, I.K. Yan, S. Borges, E.A. Perez, et al. 2015. Distinct E-cadherin-based complexes regulate cell behaviour through miRNA processing or Src and p120 catenin activity. *Nat. Cell Biol.* 17:1145–1157. <https://doi.org/10.1038/ncb3227>
- Kugel, J.F., and J.A. Goodrich. 2012. Non-coding RNAs: key regulators of mammalian transcription. *Trends Biochem. Sci.* 37:144–151. <https://doi.org/10.1016/j.tibs.2011.12.003>
- Kutter, C., S. Watt, K. Stefflova, M.D. Wilson, A. Goncalves, C.P. Ponting, D.T. Odom, and A.C. Marques. 2012. Rapid turnover of long noncoding RNAs and the evolution of gene expression. *PLoS Genet.* 8:e1002841. <https://doi.org/10.1371/journal.pgen.1002841>
- Landerer, E., J. Villegas, V.A. Burzio, L. Oliveira, C. Villota, C. Lopez, F. Restovic, R. Martinez, O. Castillo, and L.O. Burzio. 2011. Nuclear localization of the mitochondrial ncRNAs in normal and cancer cells. *Cell Oncol. (Dordr.)* 34:297–305. <https://doi.org/10.1007/s13402-011-0018-8>
- Lécuyer, E., H. Yoshida, N. Parthasarathy, C. Alm, T. Babak, T. Cerovina, T.R. Hughes, P. Tomancak, and H.M. Krause. 2007. Global analysis of mRNA localization reveals a prominent role in organizing cellular architecture and function. *Cell* 131:174–187. <https://doi.org/10.1016/j.cell.2007.08.003>
- Lee, C.F., C.P. Brangwynne, J. Gharakhani, A.A. Hyman, and F. Jülicher. 2013. Spatial organization of the cell cytoplasm by position-dependent phase separation. *Phys. Rev. Lett.* 111:088101. <https://doi.org/10.1103/PhysRevLett.111.088101>
- Lee, S., F. Kopp, T.C. Chang, A. Sataluri, B. Chen, S. Sivakumar, H. Yu, Y. Xie, and J.T. Mendell. 2016. Noncoding RNA NORAD Regulates Genomic Stability by Sequestering PUMILIO Proteins. *Cell* 164:69–80. <https://doi.org/10.1016/j.cell.2015.12.017>
- Lennox, K.A., and M.A. Behlke. 2016. Cellular localization of long non-coding RNAs affects silencing by RNAi more than by antisense oligonucleotides. *Nucleic Acids Res.* 44:863–877. <https://doi.org/10.1093/nar/gkv1206>
- Leucci, E., R. Vendramin, M. Spinazzi, P. Laurette, M. Fiers, J. Wouters, E. Radaelli, S. Eyckerman, C. Leonelli, K. Vanderheyden, et al. 2016. Melanoma addiction to the long non-coding RNA SAMMSON. *Nature* 531:518–522. <https://doi.org/10.1038/nature17161>
- Leung, A.K., J.M. Calabrese, and P.A. Sharp. 2006. Quantitative analysis of Argonaute protein reveals microRNA-dependent localization to stress granules. *Proc. Natl. Acad. Sci. USA* 103:18125–18130. <https://doi.org/10.1073/pnas.0608845103>
- Li, Q., Y. Shao, X. Zhang, T. Zheng, M. Miao, L. Qin, B. Wang, G. Ye, B. Xiao, and J. Guo. 2015. Plasma long noncoding RNA protected by exosomes as a potential stable biomarker for gastric cancer. *Tumour Biol.* 36: 2007–2012. <https://doi.org/10.1007/s13277-014-2807-y>
- Li, R., A.R. Harvey, S.I. Hodgetts, and A.H. Fox. 2017. Functional dissection of NEAT1 using genome editing reveals substantial localization of the NEAT1\_1 isoform outside paraspeckles. *RNA* 23:872–881. <https://doi.org/10.1261/rna.059477.116>
- Lin, A., C. Li, Z. Xing, Q. Hu, K. Liang, L. Han, C. Wang, D.H. Hawke, S. Wang, Y. Zhang, et al. 2016. The LINK-A lncRNA activates normoxic HIF1 $\alpha$  signalling in triple-negative breast cancer. *Nat. Cell Biol.* 18:213–224. <https://doi.org/10.1038/ncb3295>
- Lin, Y., B.F. Schmidt, M.P. Bruchez, and C.J. McManus. 2018. Structural analyses of NEAT1 lncRNAs suggest long-range RNA interactions that may contribute to paraspeckle architecture. *Nucleic Acids Res.* 46: 3742–3752. <https://doi.org/10.1093/nar/gky046>
- Long, R.M., R.H. Singer, X. Meng, I. Gonzalez, K. Nasmyth, and R.P. Jansen. 1997. Mating type switching in yeast controlled by asymmetric localization of ASH1 mRNA. *Science* 277:383–387. <https://doi.org/10.1126/science.277.5324.383>
- Lubelsky, Y., and I. Ulitsky. 2018. Sequences enriched in Alu repeats drive nuclear localization of long RNAs in human cells. *Nature* 555:107–111. <https://doi.org/10.1038/nature25757>
- Ma, J., Z. Liu, N. Michelotti, S. Pitchiaya, R. Veerapaneni, J.R. Androsavich, N.G. Walter, and W. Yang. 2013. High-resolution three-dimensional mapping of mRNA export through the nuclear pore. *Nat. Commun.* 4: 2414. <https://doi.org/10.1038/ncomms3414>
- Managadze, D., A.E. Lobkovsky, Y.I. Wolf, S.A. Shabalina, I.B. Rogozin, and E.V. Koonin. 2013. The vast, conserved mammalian lincRNome. *PLoS Comput. Biol.* 9:e1002917. <https://doi.org/10.1371/journal.pcbi.1002917>
- Mardakheh, F.K., A. Paul, S. Kümper, A. Sadok, H. Paterson, A. McCarthy, Y. Yuan, and C.J. Marshall. 2015. Global Analysis of mRNA, Translation, and Protein Localization: Local Translation Is a Key Regulator of Cell Protrusions. *Dev. Cell* 35:344–357. <https://doi.org/10.1016/j.devcel.2015.10.005>
- Matheny, T., B.S. Rao, and R. Parker. 2019. Transcriptome-Wide Comparison of Stress Granules and P-Bodies Reveals that Translation Plays a Major Role in RNA Partitioning. *Mol. Cell Biol.* 39:e00313–19. <https://doi.org/10.1128/MCB.00313-19>
- Matsumoto, A., A. Pasut, M. Matsumoto, R. Yamashita, J. Fung, E. Monteleone, A. Saghatelian, K.I. Nakayama, J.G. Clohessy, and P.P. Pandolfi. 2017. mTORC1 and muscle regeneration are regulated by the LINCO0961-encoded SPAR polypeptide. *Nature* 541:228–232. <https://doi.org/10.1038/nature21034>
- Melé, M., and J.L. Rinn. 2016. “Cat’s Cradling” the 3D Genome by the Act of lncRNA Transcription. *Mol. Cell* 62:657–664. <https://doi.org/10.1016/j.molcel.2016.05.011>
- Melé, M., K. Mattioli, W. Mallard, D.M. Shechner, C. Gerhardinger, and J.L. Rinn. 2017. Chromatin environment, transcriptional regulation, and splicing distinguish lincRNAs and mRNAs. *Genome Res.* 27:27–37. <https://doi.org/10.1101/gr.214205.116>
- Melo, S.A., H. Sugimoto, J.T. O’Connell, N. Kato, A. Villanueva, A. Vidal, L. Qiu, E. Vitkin, L.T. Perelman, C.A. Melo, et al. 2014. Cancer exosomes perform cell-independent microRNA biogenesis and promote tumorigenesis. *Cancer Cell* 26:707–721. <https://doi.org/10.1016/j.ccell.2014.09.005>
- Melton, D.A. 1987. Translocation of a localized maternal mRNA to the vegetal pole of *Xenopus* oocytes. *Nature* 328:80–82. <https://doi.org/10.1038/328080a0>
- Meng, X.D., H.H. Yao, L.M. Wang, M. Yu, S. Shi, Z.X. Yuan, and J. Liu. 2020. Knockdown of GAS5 Inhibits Atherosclerosis Progression via Reducing EZH2-Mediated ABCA1 Transcription in ApoE<sup>-/-</sup> Mice. *Mol. Ther. Nucleic Acids* 19:84–96. <https://doi.org/10.1016/j.omtn.2019.10.034>
- Mercer, T.R., and J.S. Mattick. 2013. Structure and function of long noncoding RNAs in epigenetic regulation. *Nat. Struct. Mol. Biol.* 20:300–307. <https://doi.org/10.1038/nsmb.2480>
- Mercer, T.R., S. Neph, M.E. Dinger, J. Crawford, M.A. Smith, A.M. Shearwood, E. Haugen, C.P. Bracken, O. Rackham, J.A. Stamatoyannopoulos, et al. 2011. The human mitochondrial transcriptome. *Cell* 146:645–658. <https://doi.org/10.1016/j.cell.2011.06.051>
- Miao, H., L. Wang, H. Zhan, J. Dai, Y. Chang, F. Wu, T. Liu, Z. Liu, C. Gao, L. Li, and X. Song. 2019. A long noncoding RNA distributed in both nucleus and cytoplasm operates in the PYCARD-regulated apoptosis by coordinating the epigenetic and translational regulation. *PLoS Genet.* 15: e1008144. <https://doi.org/10.1371/journal.pgen.1008144>
- Mili, S., K. Moissoglu, and I.G. Macara. 2008. Genome-wide screen reveals APC-associated RNAs enriched in cell protrusions. *Nature* 453:115–119. <https://doi.org/10.1038/nature06888>
- Miyagawa, R., K. Tano, R. Mizuno, Y. Nakamura, K. Ijiri, R. Rakwal, J. Shibato, Y. Masuo, A. Mayeda, T. Hirose, and N. Akimitsu. 2012. Identification of cis- and trans-acting factors involved in the localization of MALAT-1 noncoding RNA to nuclear speckles. *RNA* 18:738–751. <https://doi.org/10.1261/rna.028639.111>
- Moissoglu, K., K. Yasuda, T. Wang, G. Chrisafis, and S. Mili. 2019. Translational regulation of protrusion-localized RNAs involves silencing and clustering after transport. *eLife* 8:e44752. <https://doi.org/10.7554/eLife.44752>
- Mondal, T., M. Rasmussen, G.K. Pandey, A. Isaksson, and C. Kanduri. 2010. Characterization of the RNA content of chromatin. *Genome Res.* 20: 899–907. <https://doi.org/10.1101/gr.103473.109>
- Mukherjee, N., L. Calviello, A. Hirsekorn, S. de Pretis, M. Pelizzola, and U. Ohler. 2017. Integrative classification of human coding and noncoding genes through RNA metabolism profiles. *Nat. Struct. Mol. Biol.* 24:86–96. <https://doi.org/10.1038/nsmb.3325>
- Nair-Menon, J., A.C. Daulagala, D.M. Connor, L. Rutledge, T. Penix, M.C. Bridges, B. Wellslager, D.D. Spyropoulos, C.D. Timmers, A.M. Broome, and A. Kourtidis. 2020. Predominant Distribution of the RNAi Machinery at Apical Adherens Junctions in Colonic Epithelia Is Disrupted in Cancer. *Int. J. Mol. Sci.* 21:2559. <https://doi.org/10.3390/ijms21072559>
- Namkoong, S., A. Ho, Y.M. Woo, H. Kwak, and J.H. Lee. 2018. Systematic Characterization of Stress-Induced RNA Granulation. *Mol. Cell* 70: 175–187.e8. <https://doi.org/10.1016/j.molcel.2018.02.025>
- Necsulea, A., M. Soumillon, M. Warnefors, A. Liechti, T. Daish, U. Zeller, J.C. Baker, F. Grützner, and H. Kaessmann. 2014. The evolution of lncRNA repertoires and expression patterns in tetrapods. *Nature* 505:635–640. <https://doi.org/10.1038/nature12943>

- Nelson, B.R., C.A. Makarewich, D.M. Anderson, B.R. Winders, C.D. Troupes, F. Wu, A.L. Reese, J.R. McAnally, X. Chen, E.T. Kavalali, et al. 2016. A peptide encoded by a transcript annotated as long noncoding RNA enhances SERCA activity in muscle. *Science*. 351:271–275. <https://doi.org/10.1126/science.aad4076>
- Nguyen, T.M., E.B. Kabotyanski, L.C. Reineke, J. Shao, F. Xiong, J.H. Lee, J. Dubrulle, H. Johnson, F. Stossi, P.S. Tsoi, et al. 2020. The SINEB1 element in the long non-coding RNA Malat1 is necessary for TDP-43 proteostasis. *Nucleic Acids Res.* 48:2621–2642. <https://doi.org/10.1093/nar/gkz1176>
- Noh, J.H., K.M. Kim, K. Abdelmohsen, J.H. Yoon, A.C. Panda, R. Munk, J. Kim, J. Curtis, C.A. Moad, C.M. Wohler, et al. 2016. HuR and GRSF1 modulate the nuclear export and mitochondrial localization of the lncRNA RMRP. *Genes Dev.* 30:1224–1239.
- Padrón, A., S. Iwasaki, and N.T. Ingolia. 2019. Proximity RNA Labeling by APEX-Seq Reveals the Organization of Translation Initiation Complexes and Repressive RNA Granules. *Mol. Cell*. 75:875–887.e5. <https://doi.org/10.1016/j.molcel.2019.07.030>
- Palazzo, A.F., and E.S. Lee. 2018. Sequence Determinants for Nuclear Retention and Cytoplasmic Export of mRNAs and lncRNAs. *Front. Genet.* 9:440. <https://doi.org/10.3389/fgene.2018.00440>
- Panas, M.D., P. Ivanov, and P. Anderson. 2016. Mechanistic insights into mammalian stress granule dynamics. *J. Cell Biol.* 215:313–323. <https://doi.org/10.1083/jcb.201609081>
- Park, H.Y., A.R. Buxbaum, and R.H. Singer. 2010. Single mRNA tracking in live cells. *Methods Enzymol.* 472:387–406. [https://doi.org/10.1016/S0076-6879\(10\)72003-6](https://doi.org/10.1016/S0076-6879(10)72003-6)
- Park, H.Y., H. Lim, Y.J. Yoon, A. Follenzi, C. Nwokafor, M. Lopez-Jones, X. Meng, and R.H. Singer. 2014. Visualization of dynamics of single endogenous mRNA labeled in live mouse. *Science*. 343:422–424. <https://doi.org/10.1126/science.1239200>
- Perry, R.B., I. Rishal, E. Doron-Mandel, A.L. Kalinski, K.F. Medzihradsky, M. Terenzio, S. Alber, S. Koley, A. Lin, M. Rozenbaum, et al. 2016. Nucleolin-Mediated RNA Localization Regulates Neuron Growth and Cycling Cell Size. *Cell Rep.* 16:1664–1676. <https://doi.org/10.1016/j.celrep.2016.07.005>
- Pitchiaya, S., M.D.A. Mourao, A.P. Jalihal, L. Xiao, X. Jiang, A.M. Chinnaiyan, S. Schnell, and N.G. Walter. 2019. Dynamic Recruitment of Single RNAs to Processing Bodies Depends on RNA Functionality. *Mol. Cell*. 74:521–533.e6. <https://doi.org/10.1016/j.molcel.2019.03.001>
- Pizzinga, M., and M.P. Ashe. 2014. Yeast mRNA localization: protein asymmetry, organelle localization and response to stress. *Biochem. Soc. Trans.* 42:1256–1260. <https://doi.org/10.1042/BST20140086>
- Pizzinga, M., C. Bates, J. Lui, G. Forte, F. Morales-Polanco, E. Linney, B. Knotkova, B. Wilson, C.A. Solari, L.E. Berchowitz, et al. 2019. Translation factor mRNA granules direct protein synthetic capacity to regions of polarized growth. *J. Cell Biol.* 218:1564–1581. <https://doi.org/10.1083/jcb.201704019>
- Postepska-Igielska, A., A. Giwojna, L. Gasri-Plotnitsky, N. Schmitt, A. Dold, D. Ginsberg, and I. Grummt. 2015. lncRNA Khps1 Regulates Expression of the Proto-oncogene SPHK1 via Triplex-Mediated Changes in Chromatin Structure. *Mol. Cell*. 60:626–636. <https://doi.org/10.1016/j.molcel.2015.10.001>
- Protter, D.S.W., and R. Parker. 2016. Principles and Properties of Stress Granules. *Trends Cell Biol.* 26:668–679. <https://doi.org/10.1016/j.tcb.2016.05.004>
- Rackham, O., T.R. Mercer, and A. Filipovska. 2012. The human mitochondrial transcriptome and the RNA-binding proteins that regulate its expression. *Wiley Interdiscip. Rev. RNA*. 3:675–695. <https://doi.org/10.1002/wrna.1128>
- Rackham, O., A.M. Shearwood, T.R. Mercer, S.M. Davies, J.S. Mattick, and A. Filipovska. 2011. Long noncoding RNAs are generated from the mitochondrial genome and regulated by nuclear-encoded proteins. *RNA*. 17:2085–2093. <https://doi.org/10.1261/rna.029405.111>
- Renganathan, A., J. Kresoja-Rakic, N. Echeverry, G. Ziltener, B. Vrugt, I. Opitz, R.A. Stahel, and E. Felley-Bosco. 2014. GAS5 long non-coding RNA in malignant pleural mesothelioma. *Mol. Cancer*. 13:119. <https://doi.org/10.1186/1476-4598-13-119>
- Rhee, H.W., P. Zou, N.D. Udeshi, J.D. Martell, V.K. Mootha, S.A. Carr, and A.Y. Ting. 2013. Proteomic mapping of mitochondria in living cells via spatially restricted enzymatic tagging. *Science*. 339:1328–1331. <https://doi.org/10.1126/science.1230593>
- Rossi, M., G. Bucci, D. Rizzotto, D. Bordo, M.J. Marzi, M. Puppo, A. Flinois, D. Spadaro, S. Citi, L. Emionite, et al. 2019. lncRNA EPR controls epithelial proliferation by coordinating Cdkn1a transcription and mRNA decay response to TGF- $\beta$ . *Nat. Commun.* 10:1969. <https://doi.org/10.1038/s41467-019-09754-1>
- Roundtree, I.A., G.Z. Luo, Z. Zhang, X. Wang, T. Zhou, Y. Cui, J. Sha, X. Huang, L. Guerrero, P. Xie, et al. 2017. YTHDC1 mediates nuclear export of N<sup>6</sup>-methyladenosine methylated mRNAs. *eLife*. 6:e31311. <https://doi.org/10.7554/eLife.31311>
- Ruiz-Orera, J., X. Messegue, J.A. Subirana, and M.M. Alba. 2014. Long non-coding RNAs as a source of new peptides. *eLife*. 3:e03523. <https://doi.org/10.7554/eLife.03523>
- Salzman, J., C. Gawad, P.L. Wang, N. Lacayo, and P.O. Brown. 2012. Circular RNAs are the predominant transcript isoform from hundreds of human genes in diverse cell types. *PLoS One*. 7:e30733. <https://doi.org/10.1371/journal.pone.0030733>
- Sambandan, S., G. Akbalik, L. Kochen, J. Rinne, J. Kahlstatt, C. Glock, G. Tushev, B. Alvarez-Castelao, A. Heckel, and E.M. Schuman. 2017. Activity-dependent spatially localized miRNA maturation in neuronal dendrites. *Science*. 355:634–637. <https://doi.org/10.1126/science.aaf8995>
- Sasaki, Y.T., T. Ideue, M. Sano, T. Mituyama, and T. Hirose. 2009. MENP-silicon/beta noncoding RNAs are essential for structural integrity of nuclear paraspeckles. *Proc. Natl. Acad. Sci. USA*. 106:2525–2530. <https://doi.org/10.1073/pnas.0807899106>
- Saxena, A., and P. Carninci. 2011. Long non-coding RNA modifies chromatin: epigenetic silencing by long non-coding RNAs. *BioEssays*. 33:830–839. <https://doi.org/10.1002/bies.201100084>
- Schiene-Fischer, C. 2015. Multidomain Peptidyl Prolyl cis/trans Isomerases. *Biochim. Biophys. Acta*. 1850:2005–2016. <https://doi.org/10.1016/j.bbagen.2014.11.012>
- Schlackow, M., T. Nojima, T. Gomes, A. Dhir, M. Carmo-Fonseca, and N.J. Proudfoot. 2017. Distinctive Patterns of Transcription and RNA Processing for Human lincRNAs. *Mol. Cell*. 65:25–38. <https://doi.org/10.1016/j.molcel.2016.11.029>
- Schmidt, K., C.A. Weidmann, T.A. Hilimire, E. Yee, B.M. Hatfield, J.S. Schneekloth Jr., K.M. Weeks, and C.D. Novina. 2020. Targeting the Oncogenic Long Non-coding RNA SLNCR1 by Blocking Its Sequence-Specific Binding to the Androgen Receptor. *Cell Rep.* 30:541–554.e5. <https://doi.org/10.1016/j.celrep.2019.12.011>
- Schütt, S., E.R. Nöldeke, and R. Sprangers. 2017. A synergistic network of interactions promotes the formation of in vitro processing bodies and protects mRNA against decapping. *Nucleic Acids Res.* 45:6911–6922. <https://doi.org/10.1093/nar/gkx353>
- Shah, S., E. Lubeck, W. Zhou, and L. Cai. 2016. In Situ Transcription Profiling of Single Cells Reveals Spatial Organization of Cells in the Mouse Hippocampus. *Neuron*. 92:342–357. <https://doi.org/10.1016/j.neuron.2016.10.001>
- Shin, Y., and C.P. Brangwynne. 2017. Liquid phase condensation in cell physiology and disease. *Science*. 357:eaa4382. <https://doi.org/10.1126/science.aaf4382>
- Shukla, C.J., A.L. McCorkindale, C. Gerhardinger, K.D. Korthauer, M.N. Cabili, D.M. Shechner, R.A. Irizarry, P.G. Maass, and J.L. Rinn. 2018. High-throughput identification of RNA nuclear enrichment sequences. *EMBO J.* 37:e98452. <https://doi.org/10.15252/embo.201798452>
- Sirey, T.M., K. Roberts, W. Haerty, O. Bedoya-Reina, S. Rogatti-Granados, J.Y. Tan, N. Li, L.C. Heather, R.N. Carter, S. Cooper, et al. 2019. The long non-coding RNA Cerox1 is a post transcriptional regulator of mitochondrial complex I catalytic activity. *eLife*. 8:e45051.
- Smith, C.M., and J.A. Steitz. 1998. Classification of gas5 as a multi-small-nucleolar-RNA (snoRNA) host gene and a member of the 5'-terminal oligopyrimidine gene family reveals common features of snoRNA host genes. *Mol. Cell Biol.* 18:6897–6909. <https://doi.org/10.1128/MCB.18.12.6897>
- Smith, J.E., J.R. Alvarez-Dominguez, N. Kline, N.J. Huynh, S. Geisler, W. Hu, J. Collier, and K.E. Baker. 2014. Translation of small open reading frames within unannotated RNA transcripts in *Saccharomyces cerevisiae*. *Cell Rep.* 7:1858–1866. <https://doi.org/10.1016/j.celrep.2014.05.023>
- Song, J., C. Ahn, C.H. Chun, and E.J. Jin. 2014. A long non-coding RNA, GAS5, plays a critical role in the regulation of miR-21 during osteoarthritis. *J. Orthop. Res.* 32:1628–1635. <https://doi.org/10.1002/jor.22718>
- Spector, D.L., and A.I. Lamond. 2011. Nuclear speckles. *Cold Spring Harb. Perspect. Biol.* 3:a000646. <https://doi.org/10.1101/cshperspect.a000646>
- St Laurent, G., C. Wahlestedt, and P. Kapranov. 2015. The Landscape of long noncoding RNA classification. *Trends Genet.* 31:239–251. <https://doi.org/10.1016/j.tig.2015.03.007>
- Standart, N., and D. Weil. 2018. P-Bodies: Cytosolic Droplets for Coordinated mRNA Storage. *Trends Genet.* 34:612–626. <https://doi.org/10.1016/j.tig.2018.05.005>

- Stanicek, L., N. Lozano-Vidal, D.I. Bink, A. Hooglugt, W. Yao, I. Wittig, J. van Rijssel, J.D. van Buul, A. van Bergen, A. Klems, et al. 2020. Long non-coding RNA LASSIE regulates shear stress sensing and endothelial barrier function. *Commun. Biol.* 3:265. <https://doi.org/10.1038/s42003-020-0987-0>
- Stein, C.S., P. Jadiya, X. Zhang, J.M. McLendon, G.M. Abouassaly, N.H. Witmer, E.J. Anderson, J.W. Elrod, and R.L. Boudreau. 2018. Mitoregulin: A lncRNA-Encoded Microprotein that Supports Mitochondrial Supercomplexes and Respiratory Efficiency. *Cell Rep.* 23:3710–3720.e8. <https://doi.org/10.1016/j.celrep.2018.06.002>
- Sun, X., and D. Wong. 2016. Long non-coding RNA-mediated regulation of glucose homeostasis and diabetes. *Am. J. Cardiovasc. Dis.* 6:17–25.
- Sunwoo, H., M.E. Dinger, J.E. Wilusz, P.P. Amaral, J.S. Mattick, and D.L. Spector. 2009. MEN epsilon/beta nuclear-retained non-coding RNAs are up-regulated upon muscle differentiation and are essential components of paraspeckles. *Genome Res.* 19:347–359. <https://doi.org/10.1101/gr.087775.108>
- Tani, H., M. Torimura, and N. Akimitsu. 2013. The RNA degradation pathway regulates the function of GAS5 a non-coding RNA in mammalian cells. *PLoS One.* 8:e55684. <https://doi.org/10.1371/journal.pone.0055684>
- Tauber, D., and R. Parker. 2019. 15-Deoxy- $\Delta^{12,14}$ -prostaglandin J2 promotes phosphorylation of eukaryotic initiation factor 2 $\alpha$  and activates the integrated stress response. *J. Biol. Chem.* 294:6344–6352. <https://doi.org/10.1074/jbc.RA118.007138>
- Tauber, D., G. Tauber, A. Khong, B. Van Treeck, J. Pelletier, and R. Parker. 2020. Modulation of RNA Condensation by the DEAD-Box Protein eIF4A. *Cell.* 180:411–426.e16. <https://doi.org/10.1016/j.cell.2019.12.031>
- Teixeira, D., U. Sheth, M.A. Valencia-Sanchez, M. Brengues, and R. Parker. 2005. Processing bodies require RNA for assembly and contain non-translating mRNAs. *RNA.* 11:371–382. <https://doi.org/10.1261/rna.7258505>
- Tilgner, H., D.G. Knowles, R. Johnson, C.A. Davis, S. Chakraborty, S. Djebali, J. Curado, M. Snyder, T.R. Gingeras, and R. Guigó. 2012. Deep sequencing of subcellular RNA fractions shows splicing to be predominantly cotranscriptional in the human genome but inefficient for lncRNAs. *Genome Res.* 22:1616–1625. <https://doi.org/10.1101/gr.134445.111>
- Tran, K.V., E.L. Brown, T. DeSouza, N.Z. Jespersen, C. Nandrup-Bus, Q. Yang, Z. Yang, A. Desai, S.Y. Min, R. Rojas-Rodriguez, et al. 2020. Human thermogenic adipocyte regulation by the long noncoding RNA LINC00473. *Nat. Metab.* 2:397–412. <https://doi.org/10.1038/s42255-020-0205-x>
- Tripathi, V., J.D. Ellis, Z. Shen, D.Y. Song, Q. Pan, A.T. Watt, S.M. Freier, C.F. Bennett, A. Sharma, P.A. Bubulya, et al. 2010. The nuclear-retained noncoding RNA MALAT1 regulates alternative splicing by modulating SR splicing factor phosphorylation. *Mol. Cell.* 39:925–938. <https://doi.org/10.1016/j.molcel.2010.08.011>
- Tsai, M.C., O. Manor, Y. Wan, N. Mosammaparast, J.K. Wang, F. Lan, Y. Shi, E. Segal, and H.Y. Chang. 2010. Long noncoding RNA as modular scaffold of histone modification complexes. *Science.* 329:689–693. <https://doi.org/10.1126/science.1192002>
- Ulitisky, I. 2016. Evolution to the rescue: using comparative genomics to understand long non-coding RNAs. *Nat. Rev. Genet.* 17:601–614. <https://doi.org/10.1038/nrg.2016.85>
- Ulitisky, I., A. Shkumatava, C.H. Jan, H. Sive, and D.P. Bartel. 2011. Conserved function of lincRNAs in vertebrate embryonic development despite rapid sequence evolution. *Cell.* 147:1537–1550. <https://doi.org/10.1016/j.cell.2011.11.055>
- Valencia, P., A.P. Dias, and R. Reed. 2008. Splicing promotes rapid and efficient mRNA export in mammalian cells. *Proc. Natl. Acad. Sci. USA.* 105:3386–3391. <https://doi.org/10.1073/pnas.0800250105>
- van Heesch, S., M. van Iterson, J. Jacobi, S. Boymans, P.B. Essers, E. de Bruijn, W. Hao, A.W. MacInnes, E. Cuppen, and M. Simonis. 2014. Extensive localization of long noncoding RNAs to the cytosol and mono- and polyribosomal complexes. *Genome Biol.* 15:R6. <https://doi.org/10.1186/gb-2014-15-1-r6>
- van Heesch, S., F. Witte, V. Schneider-Lunitz, J.F. Schulz, E. Adami, A.B. Faber, M. Kirchner, H. Maatz, S. Blachut, C.L. Sandmann, et al. 2019. The Translational Landscape of the Human Heart. *Cell.* 178:242–260.e29. <https://doi.org/10.1016/j.cell.2019.05.010>
- Van Treeck, B., D.S.W. Protter, T. Matheny, A. Khong, C.D. Link, and R. Parker. 2018. RNA self-assembly contributes to stress granule formation and defining the stress granule transcriptome. *Proc. Natl. Acad. Sci. USA.* 115:2734–2739. <https://doi.org/10.1073/pnas.1800038115>
- Vendramin, R., Y. Verheyden, H. Ishikawa, L. Goedert, E. Nicolas, K. Saraf, A. Armaos, R. Delli Ponti, K. Izumikawa, P. Mestdagh, et al. 2018. SAMMSON fosters cancer cell fitness by concertedly enhancing mitochondrial and cytosolic translation. *Nat. Struct. Mol. Biol.* 25:1035–1046. <https://doi.org/10.1038/s41594-018-0143-4>
- Wang, G., H.W. Chen, Y. Oktay, J. Zhang, E.L. Allen, G.M. Smith, K.C. Fan, J.S. Hong, S.W. French, J.M. McCaffery, et al. 2010. PNPASE regulates RNA import into mitochondria. *Cell.* 142:456–467. <https://doi.org/10.1016/j.cell.2010.06.035>
- Wang, T., S. Hamilla, M. Cam, H. Aranda-Espinoza, and S. Mili. 2017a. Extracellular matrix stiffness and cell contractility control RNA localization to promote cell migration. *Nat. Commun.* 8:896. <https://doi.org/10.1038/s41467-017-00884-y>
- Wang, W.Y., Y.F. Wang, P. Ma, T.P. Xu, and Y.Q. Shu. 2017b. Taurine-upregulated gene 1: A vital long non-coding RNA associated with cancer in humans (Review). *Mol. Med. Rep.* 16:6467–6471. <https://doi.org/10.3892/mmr.2017.7472>
- Wang, Y., L. Chen, B. Chen, X. Li, J. Kang, K. Fan, Y. Hu, J. Xu, L. Yi, J. Yang, et al. 2013. Mammalian ncRNA-disease repository: a global view of ncRNA-mediated disease network. *Cell Death Dis.* 4:e765. <https://doi.org/10.1038/cddis.2013.292>
- Wang, Y., L. Huang, Y. Wang, W. Luo, F. Li, J. Xiao, S. Qin, Z. Wang, X. Song, Y. Wang, et al. 2020. Single-cell RNA-sequencing analysis identifies host long noncoding RNA MAMDC2-AS1 as a co-factor for HSV-1 nuclear transport. *Int. J. Biol. Sci.* 16:1586–1603. <https://doi.org/10.7150/ijbbs.42556>
- Wang, Z., Z. Deng, N. Dahmane, K. Tsai, P. Wang, D.R. Williams, A.V. Koskenkov, L.C. Showe, R. Zhang, Q. Huang, et al. 2015. Telomeric repeat-containing RNA (TERRA) constitutes a nucleoprotein component of extracellular inflammatory exosomes. *Proc. Natl. Acad. Sci. USA.* 112:E6293–E6300. <https://doi.org/10.1073/pnas.1505962112>
- Weber, S.C., and C.P. Brangwynne. 2012. Getting RNA and protein in phase. *Cell.* 149:1188–1191. <https://doi.org/10.1016/j.cell.2012.05.022>
- Wilusz, J.E. 2018. A 360° view of circular RNAs: From biogenesis to functions. *Wiley Interdiscip. Rev. RNA.* 9:e1478. <https://doi.org/10.1002/wrna.1478>
- Wilusz, J.E., C.K. JnBaptiste, L.Y. Lu, C.D. Kuhn, L. Joshua-Tor, and P.A. Sharp. 2012. A triple helix stabilizes the 3' ends of long noncoding RNAs that lack poly(A) tails. *Genes Dev.* 26:2392–2407. <https://doi.org/10.1101/gad.204438.112>
- Wu, B., C. Eliscovich, Y.J. Yoon, and R.H. Singer. 2016. Translation dynamics of single mRNAs in live cells and neurons. *Science.* 352:1430–1435. <https://doi.org/10.1126/science.aaf1084>
- Wu, Y., X. Yang, Z. Chen, L. Tian, G. Jiang, F. Chen, J. Li, P. An, L. Lu, N. Luo, et al. 2019. m<sup>6</sup>A-induced lncRNA RPI1 triggers the dissemination of colorectal cancer cells via upregulation of Zeb1. *Mol. Cancer.* 18:87. <https://doi.org/10.1186/s12943-019-1014-2>
- Wu, Y., Y. Zhao, L. Huan, J. Zhao, Y. Zhou, L. Xu, Z. Hu, Y. Liu, Z. Chen, L. Wang, et al. 2020. An LTR Retrotransposon-Derived Long Noncoding RNA lncMER52A Promotes Hepatocellular Carcinoma Progression by Binding p120-Catenin. *Cancer Res.* 80:976–987. <https://doi.org/10.1158/0008-5472.CAN-19-2115>
- Xiang, J.F., Q.F. Yin, T. Chen, Y. Zhang, X.O. Zhang, Z. Wu, S. Zhang, H.B. Wang, J. Ge, X. Lu, et al. 2014. Human colorectal cancer-specific CCAT1-L lncRNA regulates long-range chromatin interactions at the MYC locus. *Cell Res.* 24:513–531. <https://doi.org/10.1038/cr.2014.35>
- Yamazaki, T., S. Souquere, T. Chujo, S. Kobelke, Y.S. Chong, A.H. Fox, C.S. Bond, S. Nakagawa, G. Pierron, and T. Hirose. 2018. Functional Domains of NEAT1 Architectural lncRNA Induce Paraspeckle Assembly through Phase Separation. *Mol. Cell.* 70:1038–1053.e7. <https://doi.org/10.1016/j.molcel.2018.05.019>
- Yin, Y., J.Y. Lu, X. Zhang, W. Shao, Y. Xu, P. Li, Y. Hong, L. Cui, G. Shan, B. Tian, et al. 2020. U1 snRNP regulates chromatin retention of noncoding RNAs. *Nature.* 580:147–150. <https://doi.org/10.1038/s41586-020-2105-3>
- Yoon, J.H., K. Abdelmohsen, S. Srikantan, X. Yang, J.L. Martindale, S. De, M. Huarte, M. Zhan, K.G. Becker, and M. Gorospe. 2012. lincRNA-p21 suppresses target mRNA translation. *Mol. Cell.* 47:648–655. <https://doi.org/10.1016/j.molcel.2012.06.027>
- Yu, F., J. Zheng, Y. Mao, P. Dong, Z. Lu, G. Li, C. Guo, Z. Liu, and X. Fan. 2015. Long Non-coding RNA Growth Arrest-specific Transcript 5 (GAS5) Inhibits Liver Fibrogenesis through a Mechanism of Competing Endogenous RNA. *J. Biol. Chem.* 290:28286–28298. <https://doi.org/10.1074/jbc.M115.683813>
- Yuan, J.H., X.N. Liu, T.T. Wang, W. Pan, Q.F. Tao, W.P. Zhou, F. Wang, and S.H. Sun. 2017. The MBNL3 splicing factor promotes hepatocellular carcinoma by increasing PKN expression through the alternative splicing of lncRNA-PXN-AS1. *Nat. Cell Biol.* 19:820–832. <https://doi.org/10.1038/ncb3538>



- Yuan, J.H., F. Yang, F. Wang, J.Z. Ma, Y.J. Guo, Q.F. Tao, F. Liu, W. Pan, T.T. Wang, C.C. Zhou, et al. 2014. A long noncoding RNA activated by TGF- $\beta$  promotes the invasion-metastasis cascade in hepatocellular carcinoma. *Cancer Cell*. 25:666–681. <https://doi.org/10.1016/j.ccr.2014.03.010>
- Zealy, R.W., M. Fomin, S. Davila, D. Makowsky, H. Thigpen, C.H. McDowell, J.C. Cummings, E.S. Lee, S.H. Kwon, K.W. Min, and J.H. Yoon. 2018. Long noncoding RNA complementarity and target transcripts abundance. *Biochim. Biophys. Acta. Gene Regul. Mech.* 1861:224–234. <https://doi.org/10.1016/j.bbagr.2018.02.001>
- Zhang, B., L. Gunawardane, F. Niazi, F. Jahanbani, X. Chen, and S. Valadkhan. 2014. A novel RNA motif mediates the strict nuclear localization of a long noncoding RNA. *Mol. Cell Biol.* 34:2318–2329. <https://doi.org/10.1128/MCB.01673-13>
- Zhang, P., H. Zhou, K. Lu, Y. Lu, Y. Wang, and T. Feng. 2018. Exosome-mediated delivery of MALAT1 induces cell proliferation in breast cancer. *OncoTargets Ther.* 11:291–299. <https://doi.org/10.2147/OTT.S155134>
- Zhao, J., B.K. Sun, J.A. Erwin, J.J. Song, and J.T. Lee. 2008. Polycomb proteins targeted by a short repeat RNA to the mouse X chromosome. *Science*. 322:750–756. <https://doi.org/10.1126/science.1163045>
- Zhao, Y., S. Liu, L. Zhou, X. Li, Y. Meng, Y. Li, L. Li, B. Jiao, L. Bai, Y. Yu, et al. 2019. Aberrant shuttling of long noncoding RNAs during the mitochondria-nuclear crosstalk in hepatocellular carcinoma cells. *Am. J. Cancer Res.* 9:999–1008.
- Zheng, G., J.A. Dahl, Y. Niu, P. Fedorcsak, C.M. Huang, C.J. Li, C.B. Vågbo, Y. Shi, W.L. Wang, S.H. Song, et al. 2013. ALKBH5 is a mammalian RNA demethylase that impacts RNA metabolism and mouse fertility. *Mol. Cell*. 49:18–29. <https://doi.org/10.1016/j.molcel.2012.10.015>
- Zucchelli, S., D. Cotella, H. Takahashi, C. Carrieri, L. Cimatti, F. Fasolo, M.H. Jones, D. Sblattero, R. Sanges, C. Santoro, et al. 2015. SINEUPS: A new class of natural and synthetic antisense long non-coding RNAs that activate translation. *RNA Biol.* 12:771–779. <https://doi.org/10.1080/15476286.2015.1060395>
- Zuckerman, B., and I. Ulitsky. 2019. Predictive models of subcellular localization of long RNAs. *RNA*. 25:557–572. <https://doi.org/10.1261/rna.068288.118>
- Zuckerman, B., M. Ron, M. Mikl, E. Segal, and I. Ulitsky. 2020. Gene Architecture and Sequence Composition Underpin Selective Dependency of Nuclear Export of Long RNAs on NXF1 and the TREX Complex. *Mol. Cell*. 79:251–267.e6. <https://doi.org/10.1016/j.molcel.2020.05.013>