

Supplementary information

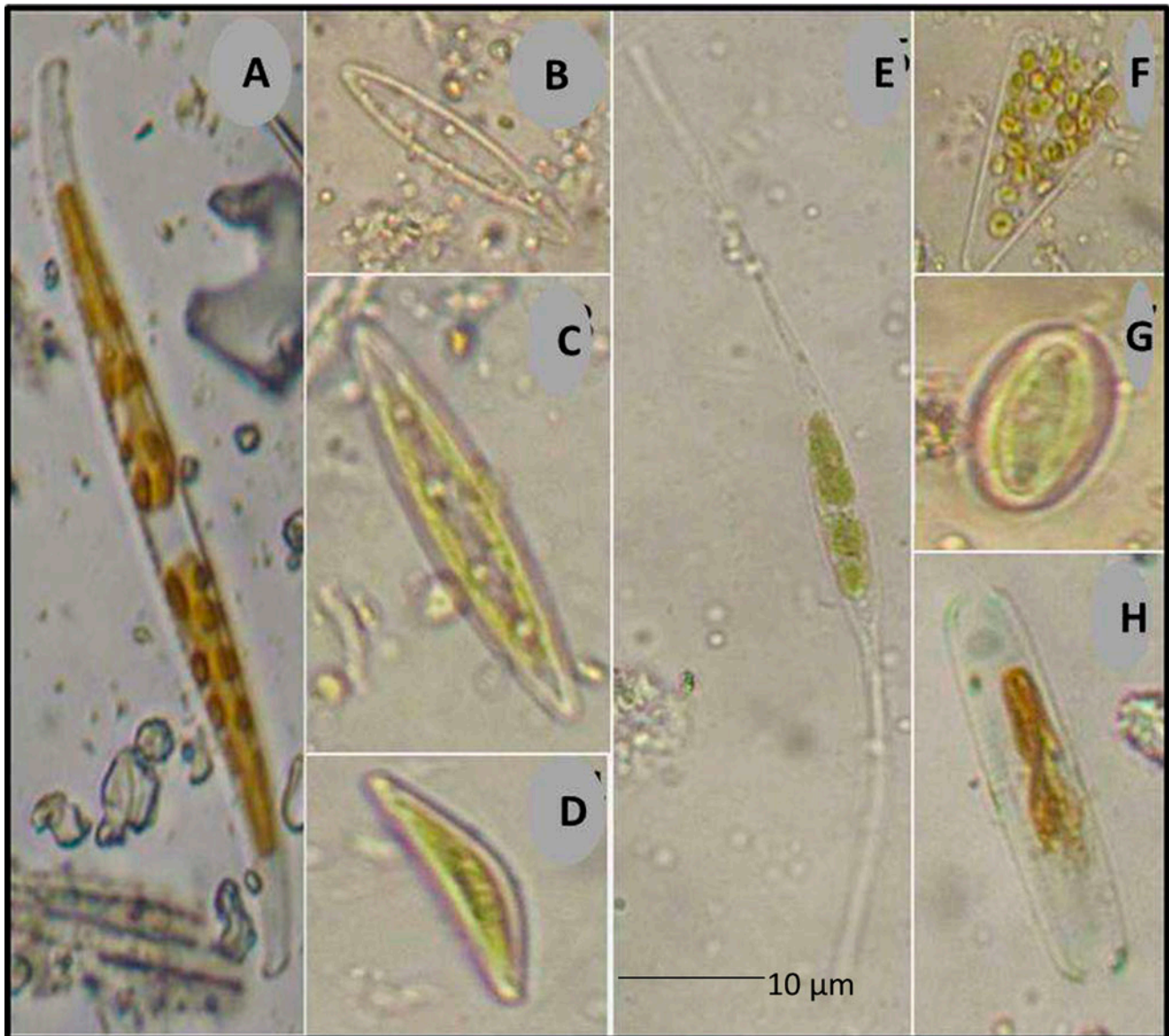


Figure S1. Diatoms identified in biofilms on control and coated panels after biofouling for one year. (A = *Nitzschia* sp., B = *Navicula* sp., C = *Navicula directa*, D = *Amphora*, E = *Cylindrotheca* sp., F = *Licmophora* sp., G = *Mastogolia* sp. and H = *Amphiprora* sp.)

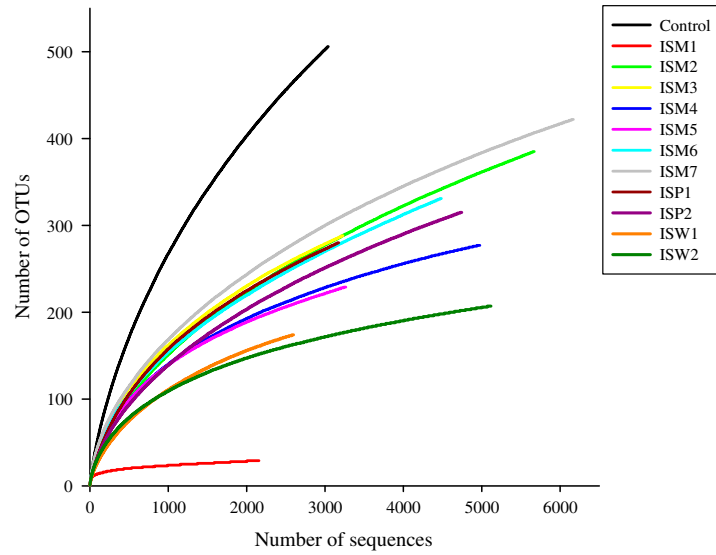


Figure S2. Calculated rarefaction curves of observed OTU richness based on pyrosequencing data.

Table S1. Eight major genera of diatoms in biofilms on all coating treatments ($n = 3$) after biofouling for one year at a depth of 1 m in Marina Bandar Rowdha.

Diatom species	Treatments											
	Control	ISM1	ISM2	ISM3	ISM4	ISM5	ISM6	ISM7	ISP1	ISP2	ISW1	ISW2
<i>Nitzschia</i> sp.	x	x	x	x	x	x	x	x	x	x		
<i>Navicula</i> sp.	x	x	x	x	x	x	x	x	x	x	x	x
<i>Navicula directa</i>						x		x		x	x	
<i>Amphora</i> sp.	x		x	x	x	x	x	x	x	x	x	x
<i>Cylindrotheca</i> sp.	x		x	x	x	x	x		x	x	x	
<i>Licmophora</i> sp.	x											
<i>Mastogolia</i> sp.	x	x			x	x	x		x		x	x
<i>Amphiprora</i> sp.	x							x		x		x
Total	7	3	4	4	5	6	5	5	5	6	5	4