

2018

Long-term nutrient reductions lead to the unprecedented recovery of a temperate coastal region

JS Lefcheck

Virginia Institute of Marine Science

R J. Orth

Virginia Institute of Marine Science

WC Dennison

D. J. Wilcox

Virginia Institute of Marine Science

RR Murphy

See next page for additional authors

Follow this and additional works at: <https://scholarworks.wm.edu/vimsarticles>



Part of the [Aquaculture and Fisheries Commons](#)

Recommended Citation

Lefcheck, JS; Orth, R J.; Dennison, WC; Wilcox, D. J.; Murphy, RR; Moore, K.; and Et al., Long-term nutrient reductions lead to the unprecedented recovery of a temperate coastal region (2018). *Proceedings Of The National Academy Of Sciences Of The United States Of America*, 115(14), 3658-3662.
10.1073/pnas.1715798115

This Article is brought to you for free and open access by the Virginia Institute of Marine Science at W&M ScholarWorks. It has been accepted for inclusion in VIMS Articles by an authorized administrator of W&M ScholarWorks. For more information, please contact scholarworks@wm.edu.

Authors

JS Lefcheck, R J. Orth, WC Dennison, D. J. Wilcox, RR Murphy, K. Moore, and Et al.



Long-term nutrient reductions lead to the unprecedented recovery of a temperate coastal region

Jonathan S. Lefcheck^{a,b,1}, Robert J. Orth^b, William C. Dennison^c, David J. Wilcox^b, Rebecca R. Murphy^d, Jennifer Keisman^e, Cassie Gurbisz^{f,g}, Michael Hannam^h, J. Brooke Landryⁱ, Kenneth A. Moore^b, Christopher J. Patrick^j, Jeremy Testa^k, Donald E. Weller^h, and Richard A. Batiuk^l

^aCenter for Ocean Health, Bigelow Laboratory for Ocean Science, East Boothbay, ME 04544; ^bDepartment of Biological Sciences, Virginia Institute of Marine Science, The College of William & Mary, Gloucester Point, VA 23062; ^cUniversity of Maryland Center for Environmental Science, Cambridge, MD 21613; ^dUniversity of Maryland Center for Environmental Science, Chesapeake Bay Program Office, Annapolis, MD 21403; ^eUS Geological Survey, Baltimore, MD 21228; ^fNational Socio-Environmental Synthesis Center, Annapolis, MD 21401; ^gEnvironmental Studies Program, St. Mary's College of Maryland, St. Mary's City, MD 20686; ^hSmithsonian Environmental Research Center, Edgewater, MD 21037; ⁱMaryland Department of Natural Resources, Annapolis, MD 21401; ^jTexas A&M University Corpus Christi, Corpus Christi, TX 78412; ^kUniversity of Maryland Center for Environmental Science, Chesapeake Biological Laboratory, Solomons, MD 20688; and ^lUS Environmental Protection Agency, Annapolis, MD 21403

Edited by Nancy Knowlton, Smithsonian Institution, Washington, DC, and approved January 25, 2018 (received for review September 7, 2017)

Humans strongly impact the dynamics of coastal systems, yet surprisingly few studies mechanistically link management of anthropogenic stressors and successful restoration of nearshore habitats over large spatial and temporal scales. Such examples are sorely needed to ensure the success of ecosystem restoration efforts worldwide. Here, we unite 30 consecutive years of watershed modeling, biogeochemical data, and comprehensive aerial surveys of Chesapeake Bay, United States to quantify the cascading effects of anthropogenic impacts on submersed aquatic vegetation (SAV), an ecologically and economically valuable habitat. We employ structural equation models to link land use change to higher nutrient loads, which in turn reduce SAV cover through multiple, independent pathways. We also show through our models that high biodiversity of SAV consistently promotes cover, an unexpected finding that corroborates emerging evidence from other terrestrial and marine systems. Due to sustained management actions that have reduced nitrogen concentrations in Chesapeake Bay by 23% since 1984, SAV has regained 17,000 ha to achieve its highest cover in almost half a century. Our study empirically demonstrates that nutrient reductions and biodiversity conservation are effective strategies to aid the successful recovery of degraded systems at regional scales, a finding which is highly relevant to the utility of environmental management programs worldwide.

submersed aquatic vegetation | seagrass | eutrophication | global change | ecosystem management

Nutrient pollution is a leading threat to nearshore ecosystems (1), including marshes (2), mangroves (3), kelps (4), and especially seagrasses (5, 6). The global cover of seagrasses has declined by over 29% in the last century, largely because of nutrient and sediment runoff (5, 6). As a result, humanity has lost associated ecosystem services worth trillions of dollars, including habitat and nurseries for commercially important species, shoreline protection, nutrient cycling, and carbon storage (5, 7, 8). With such high stakes for human well-being, coastal managers are working to mitigate nutrient inputs and restore the functionality of coastal ecosystems. Recent syntheses, however, indicate that many coastal ecosystems, including seagrasses and other underwater vascular plants—collectively known as submersed aquatic vegetation (SAV)—are failing to meet their recovery potentials (9–13). With few instances of effective and large-scale restorations to validate past management actions, current recommendations are often guided more by theory than empirical evidence, leading to less-than-desirable outcomes and creating an urgent demand for successful examples to shape current and future efforts (10, 11).

Most reported examples of successful recovery occur at small scales (1–10 km²) and over short periods (<10 y) (10), whereas many coastal systems are much larger and respond to influences

distributed over greater areas and longer time frames (14). Chesapeake Bay has 18,803 km of coastline, a diversity of habitats, and is among the most consistently studied and managed regions in the world (15). It therefore presents a unique opportunity to resolve the effects of human activities on essential SAV habitat. Since 1950, the population of the Chesapeake Bay watershed has doubled to 18 million people, leading to changes in land use and adding to the substantial nutrient and sediment runoff from previously established urban and agricultural lands (15). From the 1950s through the 1970s, tens of thousands of hectares of SAV were lost in the largest decline documented in over 400 y (16). Concern over the loss of SAV and declines in the overall health and economy of the bay led to unparalleled cooperation among federal, state, local, and scientific agencies, whose joint efforts identified nutrient pollution and subsequent loss of SAV as the two most critical issues facing Chesapeake Bay (15). These agencies instituted measures to reduce nutrient inputs, as well as long-term monitoring programs to gauge their effectiveness, thereby establishing Chesapeake Bay as one of the few places on Earth where comprehensive long-term data exist to mechanistically link human impacts and ecological restoration at broad scales (15).

In this study, we evaluate the relationship between nutrient pollution and SAV using aerial surveys conducted from 1984 to 2015, in situ biogeochemical monitoring data, historical information

Significance

Human actions, including nutrient pollution, are causing the widespread degradation of coastal habitats, and efforts to restore these valuable ecosystems have been largely unsuccessful or of limited scope. We provide an example of successful restoration linking effective management of nutrients to the successful recovery of submersed aquatic vegetation along thousands of kilometers of coastline in Chesapeake Bay, United States. We also show that biodiversity conservation can be an effective path toward recovery of coastal systems. Our study validates 30 years of environmental policy and provides a road map for future ecological restoration.

Author contributions: J.S.L., R.J.O., W.C.D., D.J.W., K.A.M., and R.A.B. designed research; J.S.L., R.J.O., and D.J.W. performed research; J.S.L., D.J.W., R.R.M., J.K., C.G., M.H., J.B.L., C.J.P., J.T., and D.E.W. analyzed data; and J.S.L., R.J.O., W.C.D., D.J.W., R.R.M., J.K., C.G., M.H., J.B.L., K.A.M., C.J.P., J.T., D.E.W., and R.A.B. wrote the paper.

The authors declare no conflict of interest.

This article is a PNAS Direct Submission.

Published under the PNAS license.

¹To whom correspondence should be addressed. Email: jlecheck@bigelow.org.

This article contains supporting information online at www.pnas.org/lookup/suppl/doi:10.1073/pnas.1715798115/-DCSupplemental.

on land use and fertilizer application, and watershed model estimates for the loads of nutrients and sediments from diffuse land runoff (nonpoint sources) and from discrete locations such as wastewater treatment plants (point sources). We unite these data using structural equation modeling (17) to quantify both the direct and indirect controls on SAV. To bridge terrestrial and aquatic realms, we conducted two separate analyses: one exploring 120 independent subestuaries that could be directly coupled to local watershed nutrient loads across multiple salinity zones, and the other linking local environmental conditions to SAV throughout the bay.

Results and Discussion

Both analyses reveal that nutrients play a dominant role in reducing SAV cover (Figs. 1 and 2). At the watershed scale, increasing nonpoint source nitrogen (Fig. 1) and phosphorus (SI Appendix, Fig. S1) loads reduce SAV. For the freshwater and oligohaline regions of the bay, this effect is independent of other variables (Fig. 1A). In the meso- and polyhaline regions, the nutrient effect becomes more negative as freshwater discharge from the watershed increases (a nutrient-by-flow interaction, Fig. 1B and C). This interaction presumably reflects increased nutrient runoff with increased precipitation (18). We further find that high nutrient loads result from fertilizer application in all salinity zones (Fig. 1 and SI Appendix, Fig. S1A and C), with an additional clear linkage to manure application in the mesohaline zone only (Fig. 1B and SI Appendix, Fig. S1A). Fertilizer and

manure loads are positively associated with agriculture (Fig. 1B and C and SI Appendix, Fig. S1) except in tidal freshwater/oligohaline areas (Fig. 1A), reflecting the agricultural sector's dominance as a source of nutrient loads to Chesapeake Bay. Many subestuaries in the tidal freshwater/oligohaline zone are highly urbanized, and nonfarm fertilizer applications (such as to residential lawns) in these areas may weaken the fertilizer-to-agriculture link. Urban development is also positively associated with increased nutrient loading in most areas of the bay, through increased runoff and/or through nonfarm application of fertilizer (Fig. 1A and B and SI Appendix, Fig. S1A and B). In summary, at the watershed scale, we find a cascade triggered by agricultural practices that apply manure and fertilizer which, together with urbanization, increase nutrient runoff that ultimately decreases SAV.

Higher loads from the watershed increase the concentration of nutrients in the bay and, accordingly, the larger bay-wide analysis shows that observed water column nitrogen and phosphorus concentrations reduce SAV through two pathways. First, phosphorus promotes phytoplankton blooms (increased chlorophyll-*a*), which shade the water column (decreased Secchi depth, a measure of clarity) and indirectly reduce SAV by restricting light penetration (Fig. 2). Second, nitrogen acts directly to reduce SAV, presumably by stimulating epiphytic algae that overgrow the blades (Fig. 2) (19, 20), or possibly through other means such as accumulation of sulfides (21). Moreover, the direct effect of nutrients on SAV is three times more negative than the indirect

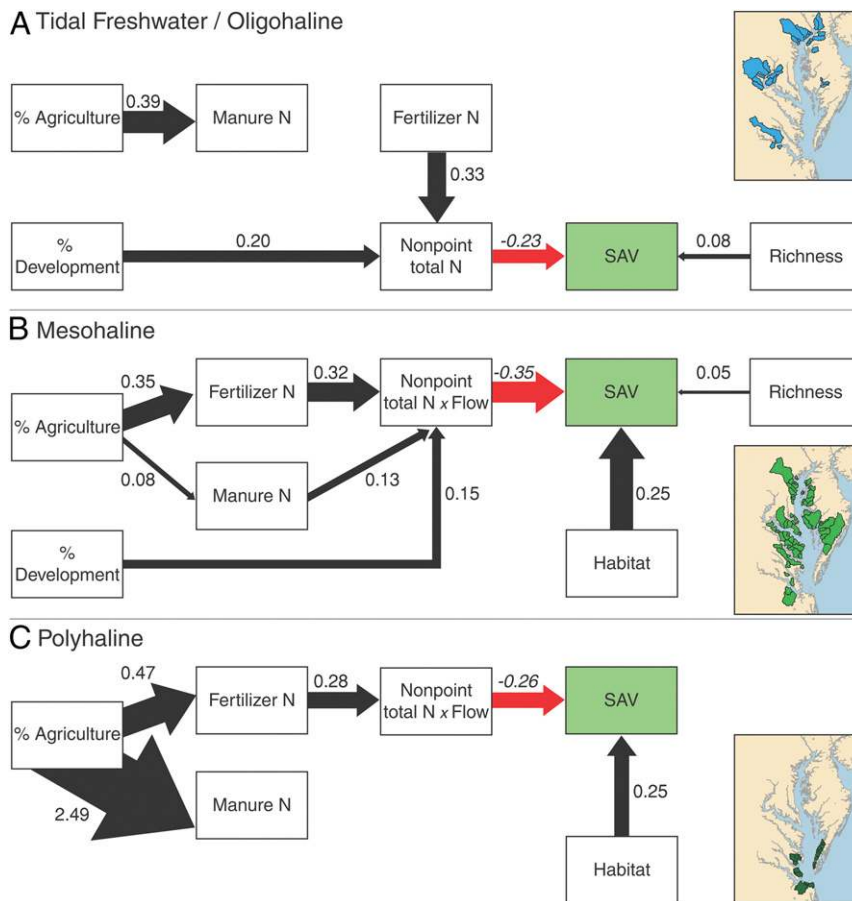


Fig. 1. Structural equation models for total nitrogen (N) fit to subestuaries and their watersheds by salinity zone. (A) Tidal freshwater/oligohaline (0–5 psu), (B) mesohaline (5–15 psu), and (C) polyhaline (15–25 psu). Arrow width is proportional to the standardized effect size, given next to the arrows. Black arrows denote positive effects; red arrows, negative effects. Nonsignificant relationships ($P > 0.05$) have been omitted for clarity, including the nonsignificant effects of point source nutrients and total suspended solids (TSS) (SI Appendix, Fig. S5). Map Insets denote the location of watersheds. Units and unstandardized path coefficients are given in SI Appendix, Supplementary Materials.

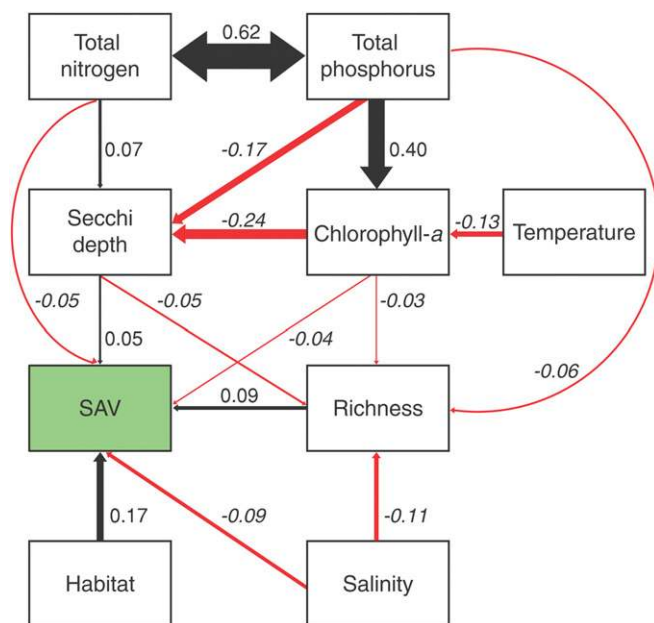


Fig. 2. Bay-wide structural equation model representing the effects of water quality on SAV cover. Arrow width is proportional to the standardized effect size, given next to the arrows. Black arrows denote positive effects; red arrows, negative effects. Nonsignificant relationships ($P > 0.05$) have been omitted for clarity, including the nonsignificant effects of total suspended solids (TSS) (*SI Appendix, Fig. S6*). Units and unstandardized path coefficients are given in *SI Appendix, Supplementary Materials*.

effect mediated by water column chlorophyll-*a* and Secchi depth (based on computed indirect effects, Fig. 2), suggesting that direct fouling is more detrimental to SAV than low clarity (22). The weaker effect of clarity may be explained by the patchiness of phytoplankton blooms, and by variability in the effect of particulates on light penetration due to differences in the types and properties of the suspended particles (23). Both mechanisms are widely recognized in Chesapeake Bay (24, 25) and elsewhere (22, 26, 27), but we demonstrate that they operate simultaneously and at large scales, a key finding that validates small-scale experimental work (19) and has direct implications for nutrient management.

We also find a consistent role for biodiversity (i.e., species richness of SAV) in promoting cover (Figs. 1 and 2). At the bay-wide average richness of three species, one additional species would result in a 1.8-fold increase in total SAV cover. Because salinity strongly affects species' distributions in Chesapeake Bay (18), the consequences of increasing diversity applies primarily to oligohaline and freshwater regions (Fig. 1 *A* and *B*), where more than a dozen SAV species coexist (*SI Appendix, Table S1*) and where recovery has been greatest (Fig. 3*A*) (28). The importance of richness in our models was unexpected, as its inclusion was meant only to distinguish monospecific stands of species like *Zostera marina* and *Hydrilla verticillata*, which are known to respond differently than other SAV species in this system (8, 15). We believe this result is robust because we accounted for sampling effort through rarefaction (Figs. 1 and 2), and we modeled extrinsic controls on cover such as sampling area, nutrient concentration, and light availability that might generate otherwise spurious correlations (e.g., ref. 24; see also *SI Appendix*). The richness effect is consistent with global studies of terrestrial plants and fishes (29, 30) and provides large-scale confirmation of diversity effects reported for local seagrass plots in the Indo-West Pacific (31). Our finding confirms, then, that conservation or restoration of species diversity could further enhance recovery of underwater grasses.

Examination of long-term nutrient trends from in situ observations show that water column nitrogen concentrations have declined, on average, by 23%, and phosphorus concentrations by 8% since 1984, with the biggest reductions occurring in the mid-1990s (Fig. 3 *B* and *C*). Declining nutrient levels coincided with a 316% increase in SAV cover during the same period, from 7,878 ha in 1984 to 24,874 ha in 2015, based on data from the aerial surveys (Fig. 3*A*). Given our finding that nutrients reduce SAV from our model results, we propose that much of the SAV recovery has been a direct result of intensive efforts to reduce inputs and lower nutrient concentrations in Chesapeake Bay over the last 30 y. We also show that nutrients from land use activities (i.e., nonpoint sources) have a more significant impact than those from specific sources (e.g., sewage treatment plants) (Fig. 1 and *SI Appendix, Fig. S1*). There are, however, instances where mitigation of point sources may be key to restoring SAV, particularly at the scale of individual subestuaries (25). We suggest that a combination of the two efforts is therefore required to continue the trajectory of SAV recovery.

While we did find a role for water clarity in enhancing SAV (Fig. 2), total suspended solids (TSS) did not emerge as a strong predictor of cover, either as loads or observed concentrations (Fig. 1 and *SI Appendix, Figs. S1* and *S2*), despite TSS being linked to light penetration (32). Two possible explanations are that TSS provide little explanatory power at large scales beyond Secchi depth, which is a more integrated measure of clarity, and that phytoplankton play a larger role in light attenuation in much of the bay (*SI Appendix, Fig. S2*). Furthermore, local TSS concentrations were available for only 17 of the 30 study years, limiting our power to detect an effect of TSS in the bay-wide analysis (*SI Appendix, Fig. S2*). Our finding does not imply that TSS are unimportant. Rather, reducing TSS may represent an alternative route for further maximizing SAV recovery, although more data are required to validate this conclusion.

Our study contributes to the limited but growing number of examples of successful reversal of human impacts and subsequent recovery of coastal habitats (10, 13). The Chesapeake Bay, however, is distinguished in the degree of recovery, the spatial and temporal scale, and our ability to discern specific mechanisms using structural equation modeling. Other regions have seen large resurgences in seagrass cover with improved water clarity, such as in Tampa Bay, Florida (33), or improved sediment stability, as in the Wadden Sea (34); but the Chesapeake Bay has seen greater total and proportional recovery than any other SAV restoration project of which we are aware. There have also been well-documented increases in kelp forests after the cessation of trawling or implementation of no-take reserves in the Gulf of Maine (35), Norway (36), and Tasmania (37), and on coral reefs in the Bahamas (38), although these studies generally extrapolate from local observations or model predictions to the regional scale. While recovery in these systems is undeniably sizable, the lack of actual cover data contrasts these examples against shallow subtidal SAV systems where regional cover can be accurately quantified. Our precise measures of SAV cover makes a strong case for the Chesapeake Bay as one of the preeminent ecological restorations reported to date.

The Chesapeake Bay Program, which is responsible for overseeing the SAV restoration reported here, is also a unique example of cooperation among federal, state, and local agencies. While most other recoveries have occurred in one or few jurisdictions, the Chesapeake Bay watershed spans six US states and the District of Columbia. The coordination, monitoring, and enforcement of regulations pertaining to water quality and habitat protection have therefore posed a significant challenge. Despite these difficulties, sustained efforts have yielded a substantial positive outcome for the overall health of the bay (Fig. 3). Studies that provide positive examples of successful human intervention have been shown to strengthen public support for

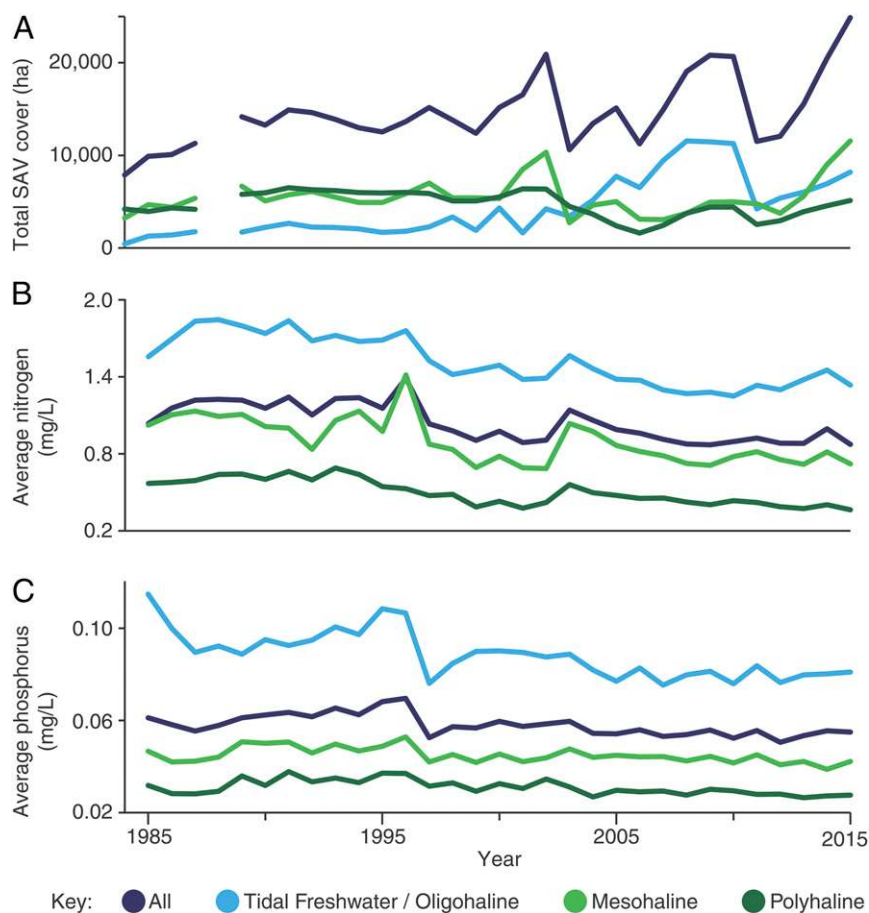


Fig. 3. Annual bay-wide trends, and trends by salinity zone, in (A) total observed SAV cover (hectares, from aerial monitoring survey), (B) mean water column nitrogen, and (C) mean water column phosphorus concentrations (milligrams per liter, from in situ water quality monitoring). SAV cover was not obtained for 1 y (1988).

environmental conservation (39, 40), and long-term studies like ours have also demonstrated a disproportionate ability to inform environmental policy (41). Our findings validate the importance of both continued nutrient reductions and continued monitoring in the Chesapeake (and elsewhere), as well as the implementation of other measures to revitalize impacted ecosystems. For example, the Chesapeake Bay Program does not currently consider biodiversity in its recommendations. Our finding that species richness was the only predictor (other than habitable area) to have a positive effect on SAV cover (Figs. 1 and 2) suggests that enhancing diversity of foundation species like SAV could both restore and stabilize future habitat. Evidence from other systems has also shown that high biodiversity may buffer against further change caused by other stressors, such as climate change (30, 42).

Reducing nutrient inputs is a central component of coastal restoration efforts worldwide, including the US Environmental Protection Agency's Chesapeake Bay Program, Great Lakes Restoration Initiative, San Francisco Bay Program, and Gulf of Mexico Program, as well as similar partnerships in Long Island Sound, Puget Sound, and Lake Champlain (<https://www.epa.gov/nutrientpollution>), and in many areas of Europe (e.g., HELCOM in the Baltic Sea, www.helcom.fi/action-areas/agriculture). These programs seek to restore some of the most productive, valuable, and iconic bodies of water in the world, all of which are facing similar challenges. Our study speaks directly to the value of such coordinated, multipartner restoration efforts to enhance coastal habitats at the regional scale.

Materials and Methods

Subestuary Data. Subestuary watersheds were identified as in refs. 18 and 43, and grouped into three salinity zones: 0–5 (low), 5–15 (oligohaline), and 15–25 practical salinity units (psu) (polyhaline). Land use information came from the US Geological Survey (USGS) National Water Quality Assessment Wall-to-Wall Anthropogenic Land Use Trends dataset (44). Within each watershed, we aggregated the areas of crop, pasture, hay, and grazing lands into one agricultural land category, and we aggregated commercial, industrial, recreational, and residential lands into one developed category. To normalize for differences in watershed size, we expressed agricultural and developed land uses as their percentages of watershed area. We used spline interpolation among the years of reported land use to assign values to missing years.

Fertilizer and manure data were collated by the USGS from various sources. Annual county-level fertilizer loads and manure nutrient mass were decomposed into separate nitrogen and phosphorus components (in $\text{kg N}\cdot\text{y}^{-1}$ and $\text{kg P}\cdot\text{y}^{-1}$), and summed for each watershed. Point and nonpoint source nitrogen, phosphorus, and total suspended solid loads were estimated using the Chesapeake Bay Program's phase 6 beta 4 watershed model (CBWM) (www.chesapeakebay.net/groups/group/modeling_team). These loads (in $\text{kg}\cdot\text{y}^{-1}$) and water discharge (in cubic meters, our independent variable "flow") are simulated daily from 1984 to 2012 at a subcounty scale and summed for each watershed in each growing season. Because fertilizer and manure records were only available through 2012, the entire subestuary dataset was restricted to 1985–2012. Further details on the delineation of watersheds and calculations of summary statistics can be found in *SI Appendix*.

SAV Data. SAV bed area and density class were mapped from aerial imagery acquired annually from 1984 through 2015 (except for 1988) as part of the Virginia Institute of Marine Science Submersed Aquatic Vegetation Monitoring Program (web.vims.edu/bio/sav) (see ref. 8). Annual maps of SAV

were converted to raster maps with 30 m cells, each of which was assigned to a density bin. Total density-weighted bottom cover was computed by multiplying the cell area by its percent cover. The area of habitable bottom was calculated using 1- and 2-m contour data that were produced to support the development of Chesapeake Bay SAV restoration goals. Species richness of SAV and community composition data were based on presence/absence surveys conducted during the growing season by researchers, government agencies, and trained individuals, including citizen scientists (18, 45). To account for variable effort over time, we rarefied richness for each subestuary across all years (46). Further details on mapping and biodiversity data are given in *SI Appendix*.

Water Quality Data. Water quality data were obtained from the Chesapeake Bay Program Water Quality Monitoring Database (www.chesapeakebay.net/data), including: temperature, salinity, turbidity (Secchi depth), and water column concentrations of nitrogen and phosphorus, chlorophyll-*a*, and total suspended solids. We utilized 112 stations with consistent data coverage from 1985 to 2014. To create replicate units, we assigned each SAV cell to the nearest monitoring station and then summed the total SAV cover proximate to each station. Further details concerning water quality data can be found in *SI Appendix*.

Statistical Analysis. To mechanistically link watershed characteristics and water column variables to SAV cover, we constructed structural equation models (SEMs). This technique allows for fitting of complex networks where

variables can be both predictors and responses, facilitating the identification of cascading effects. Because SAV cover is temporally and spatially auto-correlated, we modeled cover using general linear mixed effects models in a piecewise SEM (17). Models were fit with subestuary or monitoring station as a random effect, and an additional autoregressive moving average (ARMA) correlation structure with a 2-y lag (47). We fit separate SEMs for nitrogen and phosphorus in the subestuary analysis, and with and without total suspended solids for the bay-wide analysis. Model assumptions were assessed visually, and fit was determined using Fisher's *C* statistic and calculation of individual model R^2 values (17). Further details on the structural equation modeling analysis, including derivation of conceptual models and evaluation of goodness of fit, can be found in *SI Appendix*.

Supplementary Materials. Supplementary methods and results, and all data and code used for the analyses, are given in *SI Appendix*.

ACKNOWLEDGMENTS. We thank J. Duffy, D. Rasher, and M. Le Peyre for comments, and K. Laumann and T. C. Berlioz for additional help. Funding for this work was provided by the US Environmental Protection Agency, Grant CB96343701. This is contribution no. 3722 of the Virginia Institute of Marine Science, College of William and Mary, and 5463 from University of Maryland Center for Environmental Science. Any use of trade, firm, or product names is for descriptive purposes only and does not imply endorsement by the US Government.

- Paerl HW, Hall NS, Peierls BL, Rossignol KL (2014) Evolving paradigms and challenges in estuarine and coastal eutrophication dynamics in a culturally and climatically stressed world. *Estuaries Coasts* 37:243–258.
- Deegan LA, et al. (2012) Coastal eutrophication as a driver of salt marsh loss. *Nature* 490:388–392.
- Lovelock CE, Ball MC, Martin KC, C Feller I (2009) Nutrient enrichment increases mortality of mangroves. *PLoS One* 4:e5600.
- Russell BD, Thompson JAI, Falkenberg LJ, Connell SD (2009) Synergistic effects of climate change and local stressors: CO₂ and nutrient-driven change in subtidal rocky habitats. *Glob Change Biol* 15:2153–2162.
- Orth RJ, et al. (2006) A global crisis for seagrass ecosystems. *Bioscience* 56:987–996.
- Waycott M, et al. (2009) Accelerating loss of seagrasses across the globe threatens coastal ecosystems. *Proc Natl Acad Sci USA* 106:12377–12381.
- Barbier EB, et al. (2011) The value of estuarine and coastal ecosystem services. *Ecol Monogr* 81:169–193.
- Lefcheck JS, Wilcox DJ, Murphy RR, Marion SR, Orth RJ (2017) Multiple stressors threaten the imperiled coastal foundation species eelgrass (*Zostera marina*) in Chesapeake Bay, USA. *Glob Change Biol* 23:3474–3483.
- Lotze HK, et al. (2006) Depletion, degradation, and recovery potential of estuaries and coastal seas. *Science* 312:1806–1809.
- Lotze HK, Coll M, Magera AM, Ward-Paige C, Airolidi L (2011) Recovery of marine animal populations and ecosystems. *Trends Ecol Evol* 26:595–605.
- Duarte CM, et al. (2015) Paradigms in the recovery of estuarine and coastal ecosystems. *Estuaries Coasts* 38:1202–1212.
- Moreno-Mateos D, Power ME, Comin FA, Yockteng R (2012) Structural and functional loss in restored wetland ecosystems. *PLoS Biol* 10:e1001247.
- Rey Benayas JM, Newton AC, Diaz A, Bullock JM (2009) Enhancement of biodiversity and ecosystem services by ecological restoration: A meta-analysis. *Science* 325:1121–1124.
- Jones HP, Schmitz OJ (2009) Rapid recovery of damaged ecosystems. *PLoS One* 4:e5653.
- Orth RJ, et al. (2017) Submersed aquatic vegetation in Chesapeake Bay: Sentinel species in a changing world. *Bioscience* 67:698–712.
- Orth RJ, Moore KA (1983) Chesapeake Bay: An unprecedented decline in submersed aquatic vegetation. *Science* 222:51–53.
- Lefcheck JS (2016) piecewiseSEM: Piecewise structural equation modelling in R for ecology, evolution, and systematics. *Methods Ecol Evol* 7:573–579.
- Patrick CJ, Weller DE, Orth RJ, Wilcox DE, Hannam MP (2017) Land use and salinity drive changes in SAV abundance and community composition. *Estuaries Coasts*, 10.1007/s12237-017-0250-1.
- Hughes AR, Bando KJ, Rodriguez LF, Williams SL (2004) Relative effects of grazers and nutrients on seagrasses: A meta-analysis approach. *Mar Ecol Prog Ser* 282:87–99.
- Duffy JE, et al. (2015) Biodiversity mediates top-down control in eelgrass ecosystems: A global comparative-experimental approach. *Ecol Lett* 18:696–705.
- Brun FG, Hernández I, Vergara JJ, Peralta G, Pérez-Lloréns JL (2002) Assessing the toxicity of ammonium pulses to the survival and growth of *Zostera noltii*. *Mar Ecol Prog Ser* 225:177–187.
- Ralph PJ, Tomasko D, Moore K, Seddon S, Macinnis-Ng CMO (2006) Human impacts on seagrasses: Eutrophication, sedimentation, and contamination. *Seagrasses: Biology, Ecology and Conservation*, eds Larkum AWD, Orth RJ, Duarte CM (Springer, Dordrecht, The Netherlands), pp 567–593.
- Gallegos CL (2001) Calculating optical water quality targets to restore and protect submersed aquatic vegetation: Overcoming problems in partitioning the diffuse attenuation coefficient for photosynthetically active radiation. *Estuaries* 24:381–397.
- Boynton WR, et al. (2014) Multi-decade responses of a tidal creek system to nutrient load reductions: Mattawoman Creek, Maryland USA. *Estuaries Coasts* 37:111–127.
- Ruhl HA, Rybicki NB (2010) Long-term reductions in anthropogenic nutrients link to improvements in Chesapeake Bay habitat. *Proc Natl Acad Sci USA* 107:16566–16570.
- Burkholder JM, Tomasko DA, Touchette BW (2007) Seagrasses and eutrophication. *J Exp Mar Biol Ecol* 350:46–72.
- Orth RJ, et al. (2010) Long-term trends in submersed aquatic vegetation (SAV) in Chesapeake Bay, USA, related to water quality. *Estuaries Coasts* 33:1144–1163.
- Gurbisz C, Kemp WM (2014) Unexpected resurgence of a large submersed plant bed in Chesapeake Bay: Analysis of time series data. *Limnol Oceanogr* 59:482–494.
- Grace JB, et al. (2016) Integrative modelling reveals mechanisms linking productivity and plant species richness. *Nature* 529:390–393.
- Duffy JE, Lefcheck JS, Stuart-Smith RD, Navarrete SA, Edgar GJ (2016) Biodiversity enhances reef fish biomass and resistance to climate change. *Proc Natl Acad Sci USA* 113:6230–6235.
- Williams SL, Ambo-Rappe R, Sur C, Abbott JM, Limbong SR (2017) Species richness accelerates marine ecosystem restoration in the Coral Triangle. *Proc Natl Acad Sci USA* 114:11986–11991.
- Dennison WC, et al. (1993) Assessing water quality with submersed aquatic vegetation habitat requirements as barometers of Chesapeake Bay health. *Bioscience* 43:86–94.
- Greening H, Janicki A, Sherwood ET, Pribble R, Johansson JOR (2014) Ecosystem responses to long-term nutrient management in an urban estuary: Tampa Bay, Florida, USA. *Estuar Coast Shelf Sci* 151:A1–A16.
- Reise K, Kohlus J (2008) Seagrass recovery in the Northern Wadden Sea? *Helgol Mar Res* 62:77–84.
- Steneck RS, Leland A, Mcnaught DC, Vavrinc J (2013) Ecosystem flips, locks, and feedbacks: The lasting effects of fisheries on Maine's kelp forest ecosystem. *Bull Mar Sci* 89:31–55.
- Boström C, et al. (2014) Distribution, structure and function of Nordic eelgrass (*Zostera marina*) ecosystems: Implications for coastal management and conservation. *Aquat Conserv* 24:410–434.
- Ling SD, Johnson CR (2012) Marine reserves reduce risk of climate-driven phase shift by reinstating size- and habitat-specific trophic interactions. *Ecol Appl* 22:1232–1245.
- Mummy PJ, et al. (2007) Trophic cascade facilitates coral recruitment in a marine reserve. *Proc Natl Acad Sci USA* 104:8362–8367.
- Bain PG, Hornsey MJ, Bongiorno R, Jeffries C (2012) Promoting pro-environmental action in climate change deniers. *Nat Clim Chang* 2:603.
- O'Neill S, Nicholson-Cole S (2009) Fear won't do it. *Sci Commun* 30:355–379.
- Hughes BB, et al. (2017) Long-term studies contribute disproportionately to ecology and policy. *Bioscience* 67:271–281.
- Isbell F, et al. (2015) Biodiversity increases the resistance of ecosystem productivity to climate extremes. *Nature* 526:574–577.
- Li X, Weller DE, Gallegos CL, Jordan TE, Kim H-C (2007) Effects of watershed and estuarine characteristics on the abundance of submersed aquatic vegetation in Chesapeake Bay subestuaries. *Estuaries Coasts* 30:840–854.
- Falcone JA (2015) *US Conterminous Wall-to-Wall Anthropogenic Land Use Trends (NWT)*, 1974-2012 (US Geological Survey, Baltimore).
- Moore KA, Wilcox DJ, Orth RJ (2000) Analysis of the abundance of submersed aquatic vegetation communities in the Chesapeake Bay. *Estuaries* 23:115–127.
- Oksanen J, et al. (2007) The vegan package. *Community Ecol Packag* 10:631–637.
- Pinheiro J, Bates D, DebRoy S, Sarkar D; R Core Team (2017) *nlme*: Linear and nonlinear mixed effects models. Available at <https://cran.r-project.org/package=nlme>. Accessed December 20, 2017.