



Research paper

Longitudinal characteristics of lymphocyte responses and cytokine profiles in the peripheral blood of SARS-CoV-2 infected patients



Jing Liu^{a,c,1}, Sumeng Li^{a,c,1}, Jia Liu^{a,c,1}, Boyun Liang^{a,c}, Xiaobei Wang^d, Hua Wang^a, Wei Li^{a,c}, Qiaoxia Tong^{a,c}, Jianhua Yi^{a,c}, Lei Zhao^{a,c}, Lijuan Xiong^{a,c}, Chunxia Guo^{a,c}, Jin Tian^{a,c}, Jinzhuo Luo^{a,c}, Jinghong Yao^{a,c}, Ran Pang^{a,c}, Hui Shen^{a,c}, Cheng Peng^{a,c}, Ting Liu^{a,c}, Qian Zhang^{a,c}, Jun Wu^{a,c}, Ling Xu^{a,c}, Sihong Lu^{a,c}, Baoju Wang^{a,c}, Zhihong Weng^{a,c}, Chunrong Han^{a,c}, Huabing Zhu^{a,c}, Ruxia Zhou^{a,c}, Helong Zhou^{a,c}, Xiliu Chen^{a,c}, Pian Ye^{a,c}, Bin Zhu^{a,c}, Lu Wang^{a,c}, Wenqing Zhou^{a,c}, Shengsong He^{a,c}, Yongwen He^{a,c}, Shenghua Jie^{a,c}, Ping Wei^{a,c}, Jiano Zhang^{a,c}, Yinping Lu^{a,c}, Weixian Wang^{a,c}, Li Zhang^{a,c}, Ling Li^{a,c}, Fengqin Zhou^{a,c}, Jun Wang^{b,c}, Ulf Dittmer^{b,c}, Mengji Lu^{b,c}, Yu Hu^{e,*}, Dongliang Yang^{a,c,**}, Xin Zheng^{a,c,**}

^a Department of Infectious Diseases, Union Hospital, Tongji Medical College, Huazhong University of Science and Technology, Wuhan 430022, China

^b Institute for Virology, University Hospital of Essen, University of Duisburg-Essen, Essen 45147, Germany

^c Joint International Laboratory of Infection and Immunity, Huazhong University of Science and Technology, Wuhan 430022, China

^d Department of Clinical Laboratory, Union Hospital, Tongji Medical College, Huazhong University of Science and Technology, Wuhan 430022, China

^e Department of Hematology, Union Hospital, Tongji Medical College, Huazhong University of Science and Technology, Wuhan 430022, China

ARTICLE INFO

Article History:

Received 24 February 2020

Revised 5 April 2020

Accepted 6 April 2020

Available online 18 April 2020

Keywords:

Coronavirus
SARS-CoV-2
COVID-19
Lymphopenia
Inflammatory cytokine

ABSTRACT

Background: The dynamic changes of lymphocyte subsets and cytokines profiles of patients with novel coronavirus disease (COVID-19) and their correlation with the disease severity remain unclear.

Methods: Peripheral blood samples were longitudinally collected from 40 confirmed COVID-19 patients and examined for lymphocyte subsets by flow cytometry and cytokine profiles by specific immunoassays.

Findings: Of the 40 COVID-19 patients enrolled, 13 severe cases showed significant and sustained decreases in lymphocyte counts [0.6 (0.6-0.8)] but increases in neutrophil counts [4.7 (3.6-5.8)] than 27 mild cases [1.1 (0.8-1.4); 2.0 (1.5-2.9)]. Further analysis demonstrated significant decreases in the counts of T cells, especially CD8⁺ T cells, as well as increases in IL-6, IL-10, IL-2 and IFN- γ levels in the peripheral blood in the severe cases compared to those in the mild cases. T cell counts and cytokine levels in severe COVID-19 patients who survived the disease gradually recovered at later time points to levels that were comparable to those of the mild cases. Moreover, the neutrophil-to-lymphocyte ratio (NLR) (AUC=0.93) and neutrophil-to-CD8⁺ T cell ratio (N8R) (AUC =0.94) were identified as powerful prognostic factors affecting the prognosis for severe COVID-19.

Interpretation: The degree of lymphopenia and a proinflammatory cytokine storm is higher in severe COVID-19 patients than in mild cases, and is associated with the disease severity. N8R and NLR may serve as a useful prognostic factor for early identification of severe COVID-19 cases.

Funding: The National Natural Science Foundation of China, the National Science and Technology Major Project, the Health Commission of Hubei Province, Huazhong University of Science and Technology, and the Medical Faculty of the University of Duisburg-Essen and Stiftung Universitaetsmedizin, Hospital Essen, Germany.

© 2020 The Author(s). Published by Elsevier B.V. This is an open access article under the CC BY-NC-ND license. (<http://creativecommons.org/licenses/by-nc-nd/4.0/>)

* Corresponding author.

** Corresponding authors at: Department of Infectious Diseases, Union Hospital, Tongji Medical College, Huazhong University of Science and Technology, Wuhan 430022, China.

E-mail addresses: huyu@126.com (Y. Hu), dliyang@hust.edu.cn (D. Yang), xin11@hotmail.com (X. Zheng).

¹ These authors contribute equally to this work.

1. Introduction

First reported in Wuhan, China, on 31 December 2019, an ongoing outbreak of a viral pneumonia in humans has raised acute and grave global concern, and rapidly spread to 197 countries, areas or territories [1]. The causative pathogen was rapidly identified as a novel

Research in context

Evidence before this study

Lymphopenia and inflammatory cytokine storm have been shown in severe acute respiratory syndrome coronavirus (SARS-CoV), the Middle East respiratory syndrome coronavirus (MERS-CoV) infections, and coronavirus disease (COVID-19).

Added value of this study

For the first time, the kinetic changes of lymphopenia, lymphocyte subset and cytokine profile were longitudinally characterized. The significant decreases in the count of CD8⁺ T cell number and increase in inflammatory cytokine levels (e.g., IL-6, IL-10) are dynamically correlated with the severity of COVID-19 patients. T cell counts and cytokine levels in severe COVID-19 patients who survived the disease gradually recovered at later time points to levels that were comparable to those of the mild cases. Neutrophil-to-lymphocyte ratio (NLR) (AUC=0.93) and neutrophil-to-CD8⁺ T cell ratio (N8R) (AUC=0.94) were identified as powerful prognostic factors affecting the prognosis for severe COVID-19.

Implications of all the available evidence

The development of severe COVID-19 is the result of imbalanced inflammation and antiviral immune responses. N8R and NLR can serve as useful prognostic factor for early identification of severe COVID-19 cases. This will help physicians to provide timely intervention for COVID-19.

2. Methods

2.1. Data collection

A written informed consent was regularly obtained from all patients upon admission into Wuhan Union Hospital, China. The study was approved by the Ethics Committee of Wuhan Union Hospital, Tongji Medical College, Huazhong University of Science and Technology, in China. The 40 confirmed COVID-19 patients at Wuhan Union Hospital during January 5 to January 24, 2020 were enrolled into this retrospective single-center study. All medical record information including epidemiological, demographic, clinical manifestation, laboratory data, and outcome data were obtained. All data were checked by a team of trained physicians.

2.2. Laboratory examination

Laboratory confirmation of the SARS-CoV-2 was performed by local CDC according to Chinese CDC protocol. Throat-swab specimens were collected from all patients and the samples were maintained in a viral-transport medium for laboratory testing. An infection with other respiratory viruses including influenza A virus, influenza B virus, coxsackie virus, respiratory syncytial virus, parainfluenza virus and enterovirus was excluded by real-time RT-PCR. Specimens, including sputum or bronchoalveolar lavage fluid, blood, urine, and feces, were cultured to identify pathogenic bacteria or fungi that may be associated with the SARS-CoV-2 infection. The specific IgG and IgM of chlamydia pneumonia and mycoplasma pneumonia were detected by chemiluminescence immunoassay. The lymphocyte test kit (Beckman Coulter Inc., FL, USA) was used for lymphocyte subset analysis. Plasma cytokines (IL2, IL4, IL6, IL10, TNF - α and IFN - γ) were detected using the human Th1/2 cytokine kit II (BD Ltd., Franklin lakes, NJ, USA). All tests were performed according to the product manual.

2.3. Statistical analyses

Classification variables are expressed in frequency or percentage, and significance was detected by chi square or Fisher's exact test. The quantized variables of parameters are expressed as mean \pm standard deviation, and the significance is tested by *t*-test. Nonparametric variables are expressed in median and quartile intervals, and significance was tested by Mann Whitney U or Kruskal Wallis test. Data (nonnormal distribution) from repeated measures were compared using the generalized linear mixed model. $P < 0.05$ was considered statistically significant in all statistical analyses. Principal component analysis (PCA) was performed to identify the major contributing factors among clinical parameters to distinguish between mild and severe cases of COVID-19 patients. The diagnostic values of selected parameters for differentiating between mild and severe cases of COVID-19 patients were assessed by receiver operating characteristic (ROC) and the area under the ROC curve (AUC). SPSS statistical software (Macintosh version 26.0, IBM, Armonk, NY, USA) and R package were used for statistical analysis.

3. Results

3.1. Demographic and clinical characteristics of COVID-19 patients

The diagnosis of COVID-19 for patients was performed according to the Guidelines of the Diagnosis and Treatment of New Coronavirus Pneumonia (version 5) published by the National Health Commission of China. Mild patients met all following conditions: (1) Epidemiological history, (2) Fever or other respiratory symptoms, (3) Typical CT image abnormalities of viral pneumonia, and (4) Positive result of RT-PCR for SARS-CoV-2 RNA. Severe patients additionally met at least

β -coronavirus, which has since been formally named as the severe acute respiratory syndrome coronavirus 2 (SARS-CoV-2) by the International Committee on Taxonomy of Viruses. According to the World Health Organization coronavirus disease 2019 (COVID-19) situation report and the daily report of the National Health Commission of China, the epidemic of SARS-CoV-2 has so far caused 462,684 confirmed cases (81,968 cases in China, including 11,977 severe cases), and 20,834 deaths (3293 deaths in China) in the world by March 26th, 2020 [1,2]. The disease caused by SARS-CoV-2 has been recently named as the COVID-19 by the World Health Organization. Previous studies about the epidemiological and clinical characteristics of COVID-19 have shown that patients with COVID-19 may develop either mild or severe symptoms of acute respiratory infection, with the mild case patients showing symptoms of fever, dry cough, fatigue, abnormal chest CT findings but with a good prognosis [3,4]. In contrast, some patients develop severe pneumonia, acute respiratory distress syndrome (ARDS) or multiple organ failure, with death rates ranging from between 4.3% to 15% according to different study reports [3,5].

Lymphopenia (lymphocyte count $<1.0 \times 10^9/L$)³ and inflammatory cytokine storm are typical laboratory abnormalities observed during highly pathogenic coronavirus infections, such as the severe acute respiratory syndrome coronavirus (SARS-CoV) and the Middle East respiratory syndrome coronavirus (MERS-CoV) infections, and are believed to be associated with disease severities [6,7]. Recent studies have also reported decreases in the counts of lymphocytes (e.g., CD4⁺ T cell, CD8⁺ T cell) in the peripheral blood and increases in serum inflammatory cytokine levels (e.g., IL-6) in COVID-19 patients [5,8–10]. However, it has remained largely unclear in the kinetics of lymphocyte subsets and inflammatory cytokines change in the peripheral blood during COVID-19. In this study, we longitudinally characterized the changes of lymphocyte subsets and cytokines profiles in the peripheral blood of COVID-19 patients with distinct disease severities.

Table 1
Demographics and baseline characteristics of patients infected with SARS-CoV-2.

Baseline variables	All patients (N = 40)	Mild patients (N = 27)	Severe patients (N = 13)
Characteristics			
Age (year)	48.7 ± 13.9	43.2 ± 12.3	59.7 ± 10.1
Gender (%)			
Men	15 (37.5)	8 (29.6)	7 (53.8)
Women	25 (62.5)	19 (70.4)	6 (46.2)
Huanan seafood market exposure (%)	3 (7.5)	1 (3.7)	2 (5.4)
Current smoking	5 (12.5)	3 (11.1)	2 (15.4)
Underlying diseases (%)			
Diabetes	6 (15.0)	2 (7.4)	4 (30.8)
Hypertension	6 (15.0)	1 (3.7)	5 (38.5)
Pituitary adenoma	2 (5.0)	1 (3.7)	1 (7.7)
Thyroid disease	2 (5.0)	2 (7.4)	0
Malignancy	2 (5.0)	2 (7.4)	0
Co-infection (%)			
Fungi	4 (10.0)	0	4 (30.8)
Bacteria	1 (2.5)	0	1 (7.7)
Signs and symptoms			
Fever	36 (90.0)	23 (85.2)	13 (100)
Highest temperature, °C			
<37.3	4 (10.0)	4 (14.8)	0
37.3–38.0	10 (25.0)	8 (29.6)	2 (15.4)
38.1–39.0	17 (42.5)	9 (33.3)	8 (61.5)
>39.0	9 (22.5)	6 (22.2)	3 (23.1)
Chill	10 (25.0)	5 (18.5)	5 (38.5)
Shivering	5 (12.5)	2 (7.4)	3 (23.1)
Fatigue	22 (55.0)	14 (51.9)	8 (61.5)
Cough	33 (82.5)	22 (81.5)	11 (84.6)
Sputum production	21 (52.5)	11 (40.7)	10 (76.9)
Pharyngalgia	5 (12.5)	4 (14.8)	1 (7.7)
Dizziness	7 (17.5)	4 (14.8)	3 (23.1)
Headache	8 (20.0)	6 (22.2)	2 (15.4)
Rhinorrhoea	1 (2.5)	1 (3.7)	0
Chest tightness	12 (30.0)	7 (25.9)	5 (38.5)
Chest pain	1 (2.5)	1 (3.7)	0
shortness of breath	5 (12.5)	5 (18.5)	0
Dyspnea	1 (2.5)	1 (3.7)	0
Myalgia	15 (37.5)	7 (25.9)	8 (61.5)
abdominal pain	1 (2.5)	1 (3.7)	0
Diarrhea	3 (7.5)	1 (3.7)	2 (15.4)
Nausea	3 (7.5)	0	3 (23.1)
Vomiting	1 (2.5)	0	1 (7.7)
Hypoleucocytosis	10 (25.0)	8 (29.6)	2 (15.4)
Lymphopenia	23 (57.5)	12 (44.4)	11 (84.6)
Thrombocytopenia	5 (12.5)	3 (11.1)	2 (15.4)
Duration of hospitalization (day)	12.6 ± 6.7	12.9 ± 7.1	11.8 ± 5.9
ARDS	3 (7.5)	0	3 (23.1)
prognosis			
Hospitalization	4 (10)	1 (3.7)	3 (23.1)
Discharge	33 (82.5)	26 (96.3)	7 (53.8)
Death	3 (7.5)	0	3 (23.1)

one of the following conditions: (1) Shortness of breath, respiratory rate ≥ 30 times/min, (2) Oxygen saturation (Resting state) $\leq 93\%$, or (3) $PaO_2 / FiO_2 \leq 300$ mmHg. A total of 40 patients were enrolled in this study, which were all Wuhan residents and laboratory confirmed cases. The flowchart of patient enrollment is shown in Fig. S5. The patients were divided into two groups according to above-mentioned conditions, including 27 mild cases (67.5%) and 13 severe cases (32.5%). Three patients in the severe group died on day 15, 18 and 21 after disease onset.

The enrolled COVID-19 patients consisted of 15 males (37.5%) and 25 females (62.5%) (Table 1). Only 3 patients (7.5%) had an exposure history (shopping) to the Huanan seafood market in Wuhan. The medium age of the patients was 48.7 ± 13.9 years old. The ages of the severe patient group (59.7 ± 10.1 years) were older than that of the mild group (43.2 ± 12.3 years). The duration of hospitalization was 12.6 ± 6.7 day, and three [7.5%] of the patients died. A total of 14 (35%) patients in both groups had underlying chronic medical conditions, including diabetes (6 [15%]), hypertension (6 [15%]), pituitary adenoma (2 [5%]), thyroid disease (2 [5%]) and tumor disease (2 [5%]).

Four severe patients had mixed fungal infection and 1 severe patient had a mixed bacterial infection (Table 1). All severe patients and 85.2% of the mild patients had fever, while no significant difference in the degrees of temperature was observed between the two groups (Table 1). The severe patients showed significantly higher frequencies in the occurrence of sputum production, myalgia and nausea. Three patients in the severe group developed (acute respiratory distress syndrome, ARDS). All patients received antiviral treatment, including interferon $\alpha 2b$ (16, 40.0%), ribavirin (24, 60.0%), abidol (18, 45.0%), and/or oseltamivir (17, 42.5%), as well as antibiotic treatment, including moxifloxacin (40, 100%), cephalosporins (20, 50%), penicillin (1, 2.5%), and/or other antibiotics (29, 72.5%). Seventeen (42.5%) patients received antifungal treatment (13 cases took prophylactic treatment) and 8 (20%) received methylprednisolone therapy (1 mild case and 7 severe cases) (Table S1). The levels of fibrinogen, D-dimer, total bilirubin, aspartate transaminase, alanine transaminase, lactate dehydrogenase, creatine kinase, C-reactive protein (CRP), ferritin and serum amyloid A protein (SAA) in the peripheral blood of the severe patients were significantly higher at admission compared to the mild

Table 2
Comparison of laboratory parameters between mild and severe COVID-19 patients.

Baseline variables	All patients (N=40)	Mild patients (N=27)	Severe patients (N=13)
Hemoglobin (g/l)	126.4 ± 13.4	127.8 ± 13.1	123.4 ± 14.0
Platelet (× 10 ⁹ /L)	183.1 ± 69.0	181.4 ± 70.7	186.6 ± 68.1
White blood cell (× 10 ⁹ /L)	4.8 ± 2.6	3.9 ± 1.5	6.6 ± 3.4
Neutrophil (× 10 ⁹ /L)	2.8 (1.6–4.3)	2.0 (1.5–2.9)	4.7 (3.6–5.8)
Lymphocyte (× 10 ⁹ /L)	0.9 (0.7–1.3)	1.1 (0.8–1.4)	0.6 (0.6–0.8)
Monocyte (× 10 ⁹ /L)	0.3 (0.2–0.5)	0.3 (0.2–0.5)	0.2 (0.2–0.5)
TBil (umol/l)	10.3 ± 5.0	8.8 ± 4.1	13.2 ± 5.5
ALT (U/L)	22.5 (16.8–31.2)	19.0 (13.5–26.0)	27.0 (23.0–50.0)
AST (U/L)	34.1 ± 17.7	25.9 ± 9.5	51.2 ± 18.7
LDH (U/L)	303.9 ± 168.8	221.5 ± 71.2	462.4 ± 190.6
CK (U/L)	59.5 (45.0–88.8)	51.0 (45.0–68.0)	104.0 (77.0–124.0)
Blood urea nitrogen (mmol/l)	3.2 (2.5–4.3)	3.2 (2.5–4.4)	3.3 (2.7–3.7)
Serum creatinine (umol/l)	67.3 ± 19.7	64.0 ± 13.3	74.2 ± 28.3
Blood potassium (mmol/l)	3.8 ± 0.5	3.9 ± 0.5	3.7 ± 0.4
Blood sodium (mmol/l)	145.9 ± 43.4	149.5 ± 52.5	138.6 ± 6.2
D-Dimer (mg/l)	0.6 (0.3–0.9)	0.4 (0.2–0.8)	0.9 (0.7–1.5)
PT (s)	13.2 ± 0.6	13.1 ± 0.6	13.4 ± 0.6
APTT (s)	39.5 ± 4.5	39.5 ± 4.6	39.5 ± 4.2
INR	1.0 ± 0.1	1.0 ± 0.1	1.0 ± 0.1
FIB (g/l)	5.1 ± 1.6	4.5 ± 1.4	6.3 ± 1.3
IgE	43.9 (14.4–98.0)	26.5 (12.8–76.1)	43.9 (27.0–105.5)
IgG	11.1 ± 2.0	10.8 ± 2.0	11.5 ± 2.0
IgA	2.2 ± 0.7	2.2 ± 0.8	2.4 ± 0.6
IgM	1.1 ± 0.4	1.1 ± 0.5	1.1 ± 0.3
C-reactive protein (mg/l)	38.1 (4.7–65.2)	7.6 (3.1–57.3)	62.9 (42.4–86.6)
Ferritin (ug/l)	596.5 (308.6–1087.6)	367.8 (174.7–522.0)	835.5 (635.4–1538.8)
SAA (mg/l)	134.4 (35.7–586.3)	46.9 (20.5–134.4)	607.1 (381.9–686.2)
C3 (g/l)	0.8 ± 0.2	0.8 ± 0.2	0.8 ± 0.1
C4 (g/l)	0.3 ± 0.1	0.3 ± 0.1	0.3 ± 0.1

patients (Table 2). No significant differences in the serum levels of immunoglobulins (IgA, IgG and IgM), complement C3 or C4 were observed between the two groups (Table 2). We also analyzed the impact of methylprednisolone treatment on the lymphocyte and neutrophil counts, as well as other cytokine levels. The results showed that patients with methylprednisolone treatment had higher lymphocyte counts, lower neutrophil counts, NLR, N8R and serum IL-6 levels than patients without methylprednisolone treatment. However, the differences were not statistically significant (Table S2).

3.2. Kinetic analysis of lymphocyte subsets in the peripheral blood of COVID-19 patients

Lymphopenia was observed in 44.4% (12/27) of mild patients and 84.6% (11/13) of severe patients at the onset of the disease. As shown in Table 2, the absolute counts of lymphocytes in the peripheral blood of the severe patients was significantly lower, while the absolute counts of total white blood cells (WBCs) and neutrophils were significantly higher than those of the mild patients at the time of hospital admission. No significant difference in monocyte counts was observed between the two groups (Table 2). Next, we analyzed the kinetic changes of WBCs, neutrophils and monocytes as well as different lymphocyte subsets in the peripheral blood of COVID-19 patients from the disease onset to at least 16 days later. The three mortalities in the severe group were excluded from the analysis due to the lack of kinetic data. Significant increases in total WBCs counts in the severe group were only observed at the time point of onset (within 3 days) but not during the following period of disease progression

compared to the mild group (Fig. 1a). Significant increases in the neutrophil counts of the severe group were observed not only at the time point of disease onset, but also at 13–15 days later compared to the mild group (Fig. 1b). In contrast, a sustained decrease in the lymphocyte counts of the severe group was observed compared to those of the mild patients. The difference was significant at the time point of disease onset and became even greater on 4–6 days later (Fig. 1c). From 7 to 15 days after disease onset, the lymphocyte counts gradually increased in the severe group, and reached a comparable level to that of the mild patients at 16 days after disease onset (Fig. 1c). No significant differences in monocyte counts were observed between the two groups during the whole observation period (Fig. 1d). There were 4 patients co-infected with fungi in the severe case group. To examine the impact of fungal infection on the results, we performed the analyses by excluding the data of the 4 cases with fungal co-infections from the severe patient group, and similar kinetic changes of different subsets of PBMCs were observed when these 4 cases were excluded. Total WBCs counts in the severe group significantly increased at the time point of onset (within 3 days) but not during the following period of disease progression compared to the mild group (Fig. S4a). Significant increases in the neutrophil counts of the severe group were observed only at the time point of disease onset (Fig. S4b). In contrast, significant decreases in lymphocyte counts of the severe group were observed at the time point of disease onset and became even greater on 4–6 days later compared to those of the mild patients (Fig. S4c). No significant differences in monocyte counts were observed between the two groups during the whole observation period (Fig. S4d).

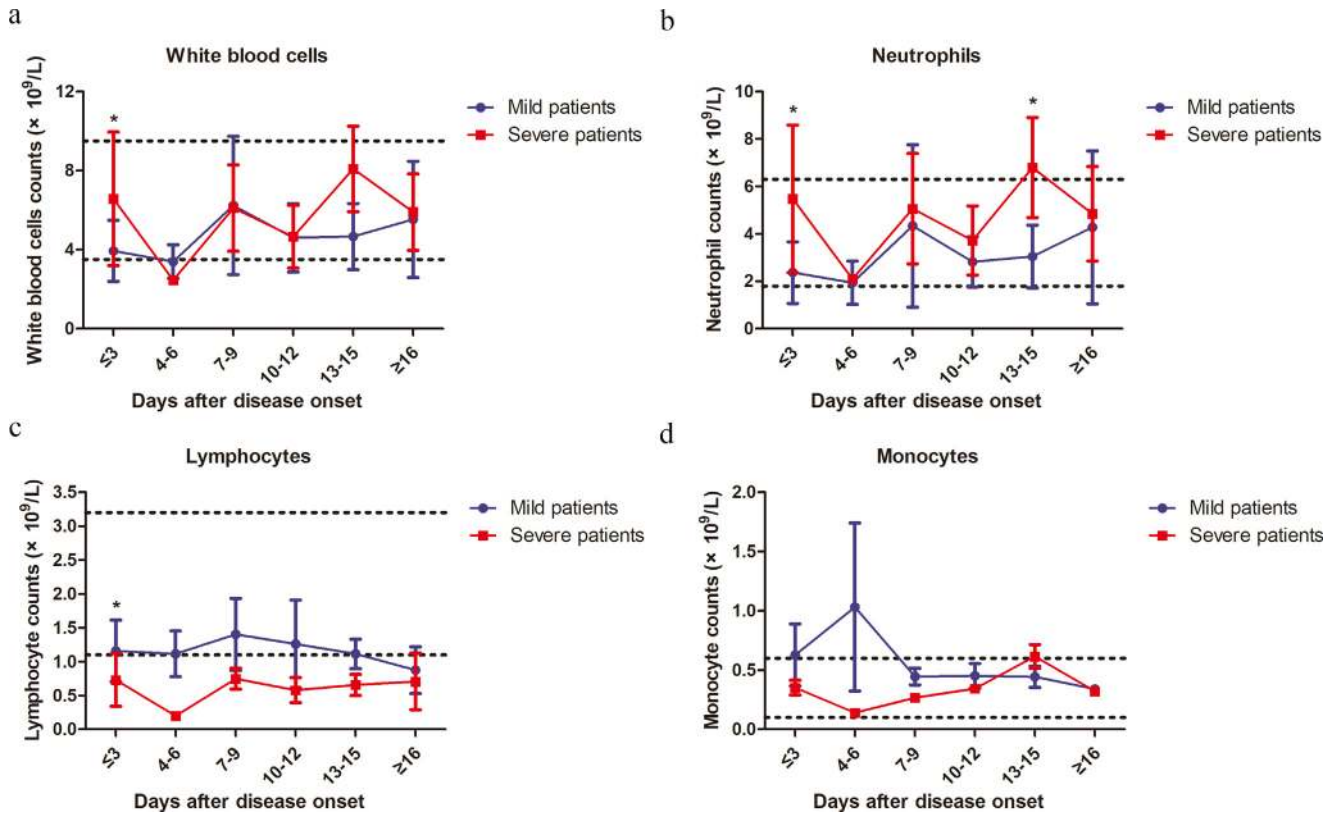


Fig. 1. Kinetic analysis of cell counts of different populations of WBCs in COVID-19 patients. The absolute numbers of total WBCs (a), neutrophils (b), lymphocytes (c) and monocytes (d) in the peripheral blood of mild (blue line) and severe (red line) COVID-19 patients were analyzed at different time points after hospital admission. Error bars, mean ± SD; Statistics, repeated measures (mixed model) ANOVA. **p* < 0.05. The upper dotted lines show the upper normal limit of each parameter, and the lower dotted lines show the lower normal limit of each parameter. Number of cases for each time point, M: Mild patients, S: Severe patients. Time ≤ 3d 27(M), 13(S); 4-6d 10(M), 1(S); 7-9d 9 (M), 4 (S); 10-12d 6 (M), 3(S); 13-15d 4 (M), 6 (S); ≥ 16d 2 (M), 7 (S).

In order to further determine the kinetic changes of different lymphocyte subsets in the peripheral blood of COVID-19 patients, we performed flow cytometry to stain CD3⁺ T cells, CD4⁺ and CD8⁺ T cell subsets, B cells and NK cells. Similar to the findings for lymphocytes, sustained decreases in CD3⁺, CD8⁺ and CD4⁺ T cell counts were observed in the severe group compared to those of the mild patients during clinical observation (Figs. 2a-c and S1). The lowest CD3⁺, CD4⁺ and CD8⁺ T cell counts were observed at 4–6 days after disease onset (Fig. 2a-c). The differences in CD3⁺ and CD8⁺ T cell counts between the two groups were significant at the time point of disease onset and 7–9 days later (Fig. 2a and c). However, the differences in CD4⁺ T cell counts between the two groups did not reach a statistical significance at any time point (Fig. 2c). The T cell counts started to gradually increase in the severe group starting at 7 days after disease onset, and reached comparable levels to those in the mild patients on day 16 after disease onset (Fig. 2a-c). No significant differences in B cell and NK cell counts were observed between the two groups during the whole course of the disease (Fig. 2d and e).

3.3. Kinetic analysis of inflammatory cytokine levels in the serum of COVID-19 patients

A previous study demonstrated changes in inflammatory cytokine levels, such as IL-2, IL-7, IL-10, and TNF-α, in the serum of COVID-19 patients [3]. Therefore, we further characterized the kinetic changes of inflammatory cytokine levels, including IL-2, IL-4, IL-6, IL-10, IFN-γ and TNF-α, in the serum of our patient cohort. Fluctuations in the serum levels of these cytokines in the mild patient group were minor. In contrast, the severe patient group showed more significant fluctuations in the serum levels of these cytokines (Fig. 3). All examined cytokines, except IL-6, reached their peak levels in the serum at

3–6 days after disease onset (Fig. 3). Both IL-6 and IL-10 levels showed sustained increases in the severe group compared to the mild group (Fig. 3a and b). Reductions in serum IL-6 levels in the severe group started at 16 days after disease onset, and IL-10 levels were lowest at 13 days after disease onset (Fig. 3a and b). Significant increases in serum IL-2 and IFN-γ levels in the severe group were only observed at 4–6 days after disease onset (Fig. 3c and f). No significant differences in IL-4 and TNF-α levels were observed between the two groups during the whole course of the disease (Fig. 3d and e). All examined cytokines reached similar levels between the severe and mild patient groups at 16 days after disease onset (Fig. 3). We observed higher CRP levels in the severe group than the mild group at most time points; however, the differences were not significant (Fig. S6). Moreover, we also performed the analyses by excluding the 4 patients with fungal co-infections from the severe patient group. We observed that both IL-6 and IL-10 levels showed sustained increases in the severe group compared to the mild group (Fig. S3a and b). Significant increases in serum IFN-γ levels in the severe group were only observed at 4–6 days after disease onset (Fig. S3f). No significant differences in IL-2, IL4 and TNF-α levels were observed between the two groups during the whole course of the disease (Fig. S3c–e).

3.4. Prognostic factors for the identification of severe COVID-19 cases

Next, we examined the possibilities of using above-mentioned parameters as prognostic factors for identifying severe cases in COVID-19 patients. PCA was firstly performed by R package “factoextra” to identify correlated variables for distinguishing severe patients from mild patients (Fig. 4a). Four most contributing variables, neutrophil-to-CD8⁺ T cell ratio (N8R), neutrophil-to-lymphocyte ratio (NLR),

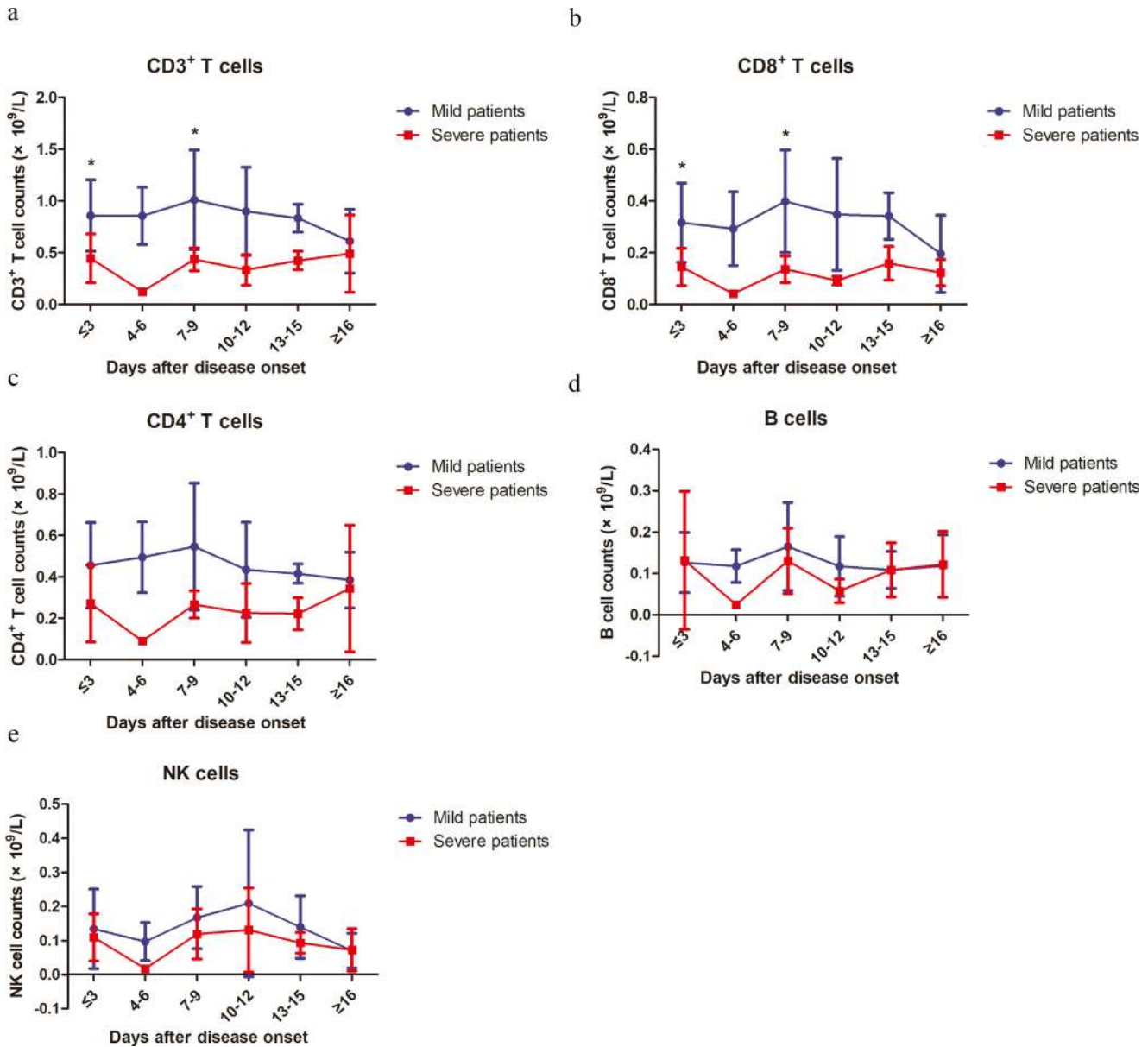


Fig. 2. Kinetic analysis of cell counts of different lymphocyte subsets in COVID-19 patients. The absolute numbers of CD3⁺ T cells (a), CD8⁺ T cells (b), CD4⁺ T cells (c), B cells (d) and NK cells (e) in the peripheral blood of mild (blue line) and severe (red line) COVID-19 patients were analyzed at different time points after hospital admission. Error bars, mean \pm SD.; Statistics, repeated measures (mixed model) ANOVA. * $p < 0.05$. Number of cases for each time point, M: Mild patients, S: Severe patients. Time ≤ 3 d 27(M), 13(S); 4-6d 10(M), 1(S); 7-9d 9(M), 4(S); 10-12d 6(M), 3(S); 13-15d 4(M), 6(S); ≥ 16 d 2(M), 7(S).

neutrophil counts (NEC) and white blood cells counts (WBCC) were selected as potential prognostic factors for further detailed statistical analysis. To assess the diagnostic value of these four selected parameters, the receiver operating characteristic (ROC) curve and the area under ROC curve (AUC) were calculated by R package “pROC” (Fig. 4b). The results of this analysis identified N8R with a higher AUC (0.94) than NLR (0.93), NE (0.91) and WBC (0.85) (Fig. 4b). Simultaneously, the cutoff values were calculated from the ROC curves, with a value of 21.9 for N8R (Specificity: 92.6%, Sensitivity: 84.6%), 5.0 for NLR (96.3%, 84.6%), 3.2 for NE (81.5%, 84.6%) and 4.3 for WBC (74.1%, 84.6%). The further univariate analysis including the four factors of N8R > 21.9, NLR > 5.0, NE > 3.2 and WBC > 4.3 were used to calculate odds ratios (ORs). The results were obtained for NLR (OR: 143, 95% CI: 11.72–1745.3), N8R (OR: 68.75, 95% CI: 8.55–552.68), NE (OR: 22, 95% CI: 3.646–132.735) and WBC (OR: 55, 95% CI: 6.779–446.23) within our patient cohort were selected as predictive factors for severe COVID-19. We also performed a 5-fold cross-validation in all patients by using univariate logistic regression for each variable. The

average of the AUC and the standard deviation are listed below: N8R: 0.908 ± 0.145 , NLR: 0.935 ± 0.093 , WBCC: 0.868 ± 0.141 , NEC: 0.828 ± 0.198 . The predictive performances of N8R and NLR were still significant when fungal co-infection cases were excluded from the group (Fig. S2b).

4. Discussion

In this study, we analyzed the clinical features and immunological characteristics of peripheral blood in patients with COVID-19. Although the majority of the patients did not have an exposure history to the Huanan seafood market in Wuhan, the clinical characteristics of these patients are very similar to those reported in previous studies [3,5,11]. In severe patients, the ages as well as the proportion of underlying diseases are higher, and co-infection also occurs. Recent reports show that the lymphocyte counts are normal in COVID-19 patients with mild diseases. In contrast, 63%–70.3% of patients with severe diseases have lymphopenia and the lymphocyte

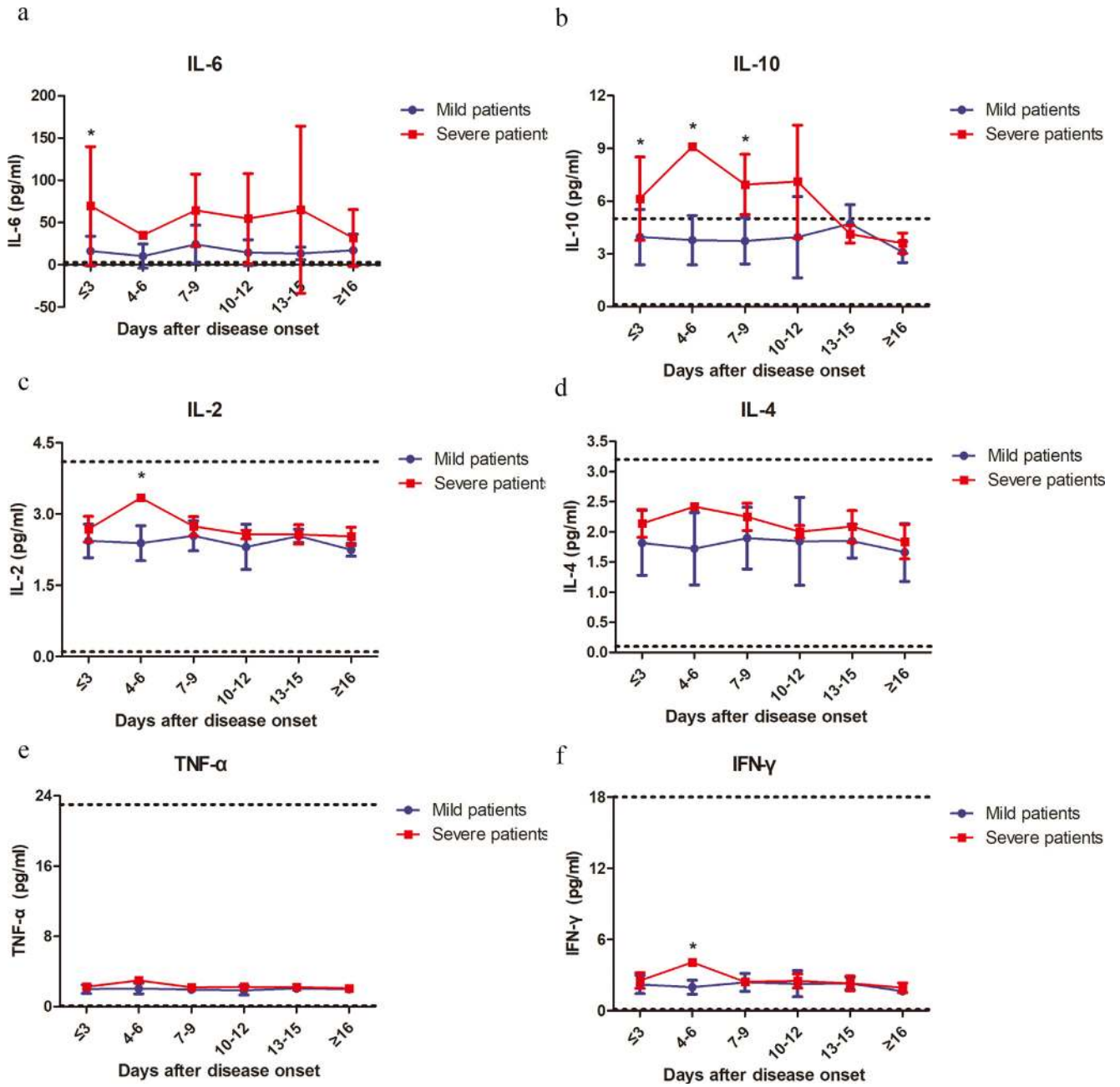


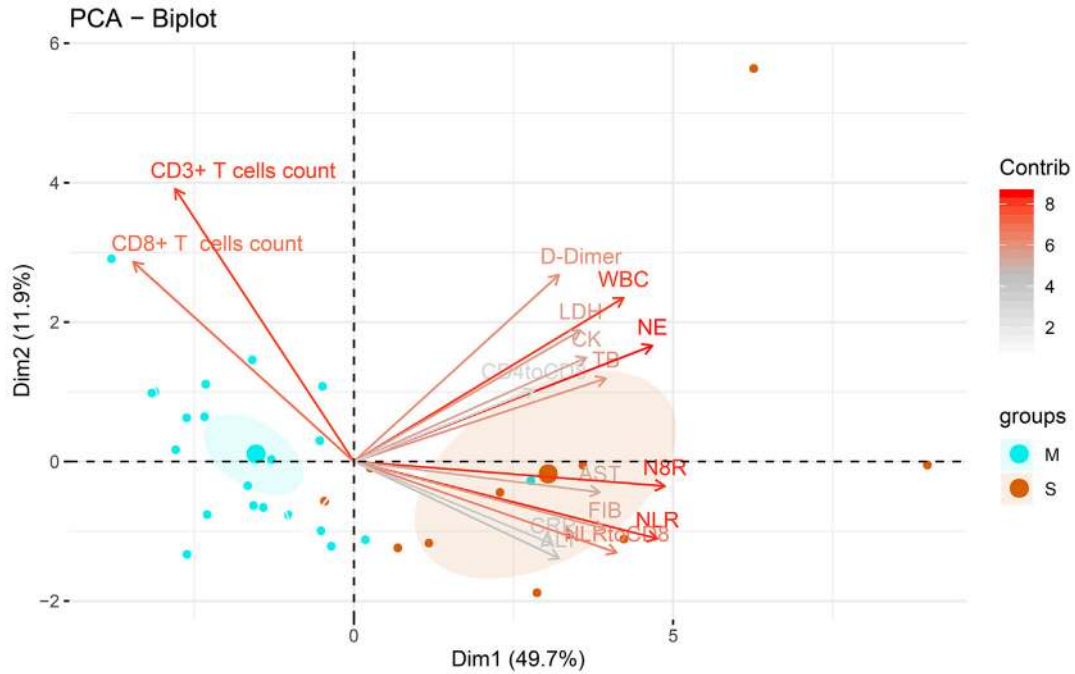
Fig. 3. Kinetic analysis of the serum levels of inflammatory cytokines in COVID-19 patients. The concentrations of IL-6 (a), IL-10 (b), IL-2 (c), IL-4 (d), TNF- α (e) and IFN- γ (f) in the serum of mild (blue line) and severe (red line) COVID-19 patients were analyzed at different time points after hospital admission. Error bars, mean \pm SD; Statistics, repeated measures (mixed model) ANOVA. * $p < 0.05$. The upper dotted lines show the upper normal limit of each parameter, and the lower dotted lines show the lower normal limit of each parameter. Number of cases for each time point, M: Mild patients, S: Severe patients. Time ≤ 3 d 27(M),13(S); 4-6d 10(M), 1(S); 7-9d 9 (M), 4 (S); 10-12d 6 (M), 3(S); 13-15d 4 (M), 6 (S); ≥ 16 d 2 (M), 7 (S).

counts in patients with a mortal outcome remain at a low level [5,11]. Our study also confirmed higher rates of developing lymphopenia in severe patients than in mild patients (84.6% vs. 44.4%). Recent studies reported that the SARS-CoV-2 infection may primarily affect T lymphocytes particularly CD4⁺ T and CD8⁺ T cells, which might be highly involved in the pathological process of COVID-19 [10]. We also found that the development of lymphopenia in severe patients was mainly related to the significantly decreased absolute counts of T cells, especially CD8⁺ T cells, but not to the absolute counts of B cells and NK cells. The decrease of T cells in the severe patient group reached its peak within the first week during the disease course, and then T cell numbers gradually increased during the second week and recovered to a comparable level to that of the mild patient group in the third

week. All the severe patients included in our study survived the disease, and thus we speculate this course is associated with a favorable outcome in severe COVID-19 patients.

Previous studies have shown that elevated levels of proinflammatory cytokines, such as IFN- γ , TNF- α , IL-6 and IL-8, are associated with severe lung injury and adverse outcomes of SARS-CoV or MERS-CoV infection [7,12–14]. Our results also demonstrate that severe COVID-19 patients have higher concentrations of IL6, IL10, IL2 and IFN- γ in the serum than mild cases, suggesting that the magnitude of cytokine storm is associated with the disease severity. Additionally, T cells are important for dampening overactive innate immune responses during viral infection [15,16]. Thus, a loss of T cells during SARS-CoV-2 infection may result in aggravated inflammatory responses, while a

a



b

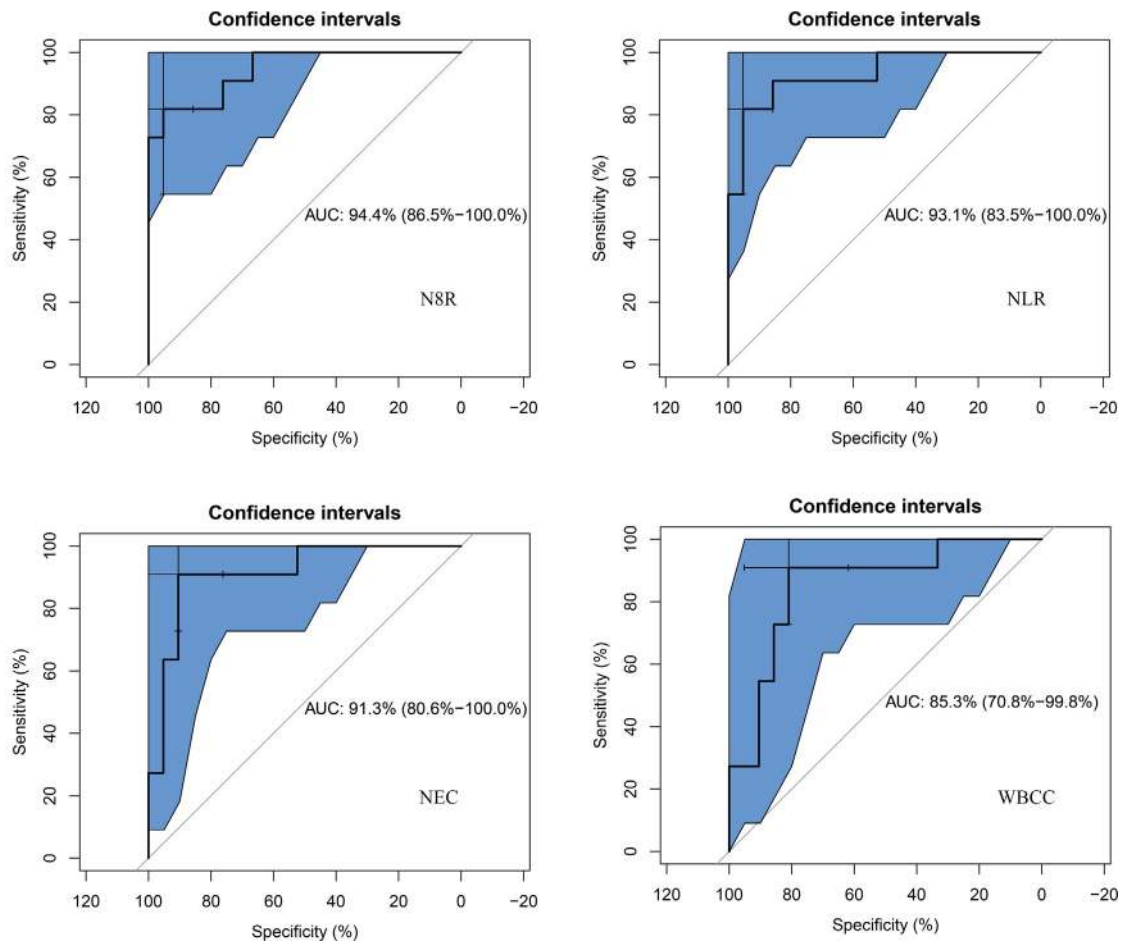


Fig. 4. Prognostic factors of severe COVID-19. (a) Principal component analysis was performed by R package “factoextra” to identify correlated variables for distinguishing severe patients from mild COVID-19 patients. Four mostly contributing variables, neutrophil-to-CD8⁺ T cell ratio (N8R), neutrophil-to-lymphocyte ratio (NLR), neutrophil counts (NE) and White Blood Cells counts (WBC) were identified. (b) ROC curve and AUC were calculated for these 4 selected parameters by using R package “pROC”. The results of this analysis identified N8R with a higher AUC (0.94) than NLR (0.93), NE (0.91) and WBC (0.85).

restoration of T cell numbers may alleviate them. In line with this hypothesis, we observed that the kinetic changes of T cell counts are reversely correlated with the kinetic changes of most examined cytokine levels in the peripheral blood in severe COVID-19 patients. While T cell counts drop to their lowest levels at 4–6 days after disease onset, serum IL-10, IL-2, IL-4, TNF- α and IFN- γ levels reach their peaks. The courses of restoring T cell numbers are associated with decreases of serum IL-6, IL-10, IL-2, IL-4, TNF- α and IFN- γ levels.

The early identification of risk factors for severe COVID-19 patients may facilitate appropriate supportive care and prompt access to the intensive care unit if necessary. A recent study in a 61-patient cohort reported that the NLR was the most useful prognostic factor affecting the prognosis for severe COVID-19 [17], and immunological markers (e.g., CD4⁺ T cell, CD8⁺ T cell, NLR) tend to be an independent predictor for COVID-19 severity and treatment efficacy [9,18]. The severity of pathological injury during SARS or MERS correlates with the extensive infiltration of neutrophils in the lung and increased neutrophil numbers in the peripheral blood [19]. Thus, the magnitude of increase in neutrophil counts may suggest the intensity of inflammatory responses in COVID-19 patients. Besides, the magnitude of the decrease in lymphocyte counts also indicates the extent of the impairment of immune system by the viral infection. Therefore, NLR may serve as a useful factor to reflect the intensity of imbalance of inflammation and immune responses in COVID-19 patients. In this study, we also screened the potential prognostic factors affecting the incidence of severe illness in our patient cohort. Based on our findings with analyzing lymphocyte subsets, we further included the ratio of neutrophils to different lymphocyte subsets as parameters. Our kinetic analysis revealed that CD8⁺ T cells are the major lymphocyte subset which decreases in cell numbers during COVID-19. In line with this finding, our results demonstrate that N8R has a comparable performance with NLR in the ROC curve analysis, and both N8R and NLR may serve as powerful factors for predicting the severe illness incidence in COVID patients.

In summary, our study of the immunological characteristics of the peripheral blood in COVID-19 patients shows that the numbers of neutrophils and T cells, especially CD8⁺ T cells, as well as the levels of inflammatory cytokines in the peripheral blood is dynamically correlated with the severity of the disease. To the best of our knowledge, this is the first work to describe the kinetic changes of lymphocyte subsets and cytokine profiles in COVID-19 patients. Importantly, we identified N8R and NLR as powerful prognostic factors for the early identification of severe COVID-19 cases. This work may help to achieve a better understanding of immune function disorder as well as immunopathogenesis during SARS-CoV-2 infection, and help physicians to provide timely intervention for COVID-19.

Declaration of Competing Interest

The authors disclose no conflicts of interest.

Acknowledgment

We thank all the doctors, nurses, disease control workers, and researchers who have fought bravely and ceaseless against the virus at the frontline during the SARS-CoV-2 epidemic, some of whom lost their lives in doing so. We thank those who have given great and selfless support to the fight against the virus. We thank Ms. Delia Cosgrove and Ms. Ursula Schrammel for the language correction of this manuscript.

Funding

This work is supported by the National Natural Science Foundation of China (81861138044, 91742114 and 91642118), the National Science and Technology Major Project (2018ZX10723203,

2018ZX10302206, 2017ZX10202201, 2017ZX10202202 and 2017ZX10202203), the Innovation Team Project of the Health Commission of Hubei Province (WJ2019C003), the Fundamental Research Funds for the Central Universities (2020kfyXGYJ016 and 2020kfyX-GYJ028), the Integrated Innovative Team for Major Human Diseases Program of Tongji Medical College and the “Double-First Class” Project for the International Cooperation Center on Infection and Immunity, HUST, and a special joint project of University Hospital Essen, University of Duisburg-Essen. The funding sources of this study did not play any role in the study design, the collection, analysis and interpretation of the data, in the writing of the manuscript and in the decision to submit the paper for publication.

Supplementary materials

Supplementary material associated with this article can be found in the online version at doi:10.1016/j.ebiom.2020.102763.

References

- [1] World Health Organization. Coronavirus disease (COVID-19) outbreak situation. 2020. Available at: <https://www.who.int/emergencies/diseases/novel-coronavirus-2019>. Accessed March 26, 2020.
- [2] National Health Commission of the People's Republic Of China. Update on the epidemic situation of novel coronavirus pneumonia as of 24:00 on March 25. Available at: <http://www.nhc.gov.cn/xcs/yqfkd/202003/f01fc26a8a7b48debe194bd1277fdb3.shtml>. Accessed March 26, 2020.
- [3] Huang C, Wang Y, Li X, Ren L, Zhao J, Hu Y. et al. Clinical features of patients infected with 2019 novel coronavirus in Wuhan, China. *Lancet* 2020;395(10223):514–23.
- [4] Chan JF, Yuan S, Kok KH, To KK, Chu H, Yang J. et al. A familial cluster of pneumonia associated with the 2019 novel coronavirus indicating person-to-person transmission: a study of a family cluster. *Lancet* 2020;395(10223):514–23.
- [5] Wang D, Hu B, Hu C, Zhu F, Liu X, Zhang J. et al. Clinical characteristics of 138 hospitalized patients with 2019 novel coronavirus-infected pneumonia in Wuhan, China. *JAMA* 2020;395(10223):514–23.
- [6] de Wit E, van Doremalen N, Falzarano D, Munster VJ. SARS and MERS: recent insights into emerging coronaviruses. *Nat Rev Microbiol* 2016;14(8):523–34.
- [7] Chien JY, Hsueh PR, Cheng WC, Yu CJ, Yang PC. Temporal changes in cytokine/chemokine profiles and pulmonary involvement in severe acute respiratory syndrome. *Respirology* 2006;11(6):715–22.
- [8] Chen N, Zhou M, Dong X, Qu J, Gong F, Han Y. et al. Epidemiological and clinical characteristics of 99 cases of 2019 novel coronavirus pneumonia in Wuhan, China: a descriptive study. *Lancet* 2020;395(10223):507–13.
- [9] Qin C, Zhou L, Hu Z, Zhang S, Yang S, Tao Y. et al. Dysregulation of immune response in patients with COVID-19 in Wuhan, China. *Clin Infect Dis* 2020 published online Mar 12. doi: 10.1093/cid/ciaa248.
- [10] Chen G, Wu D, Guo W, Cao Y, Huang D, Wang H. et al. Clinical and immunologic features in severe and moderate coronavirus disease 2019. *J Clin Invest* 2020 published online Apr 13. doi: 10.1172/JCI137244.
- [11] Chang D, Lin M, Wei L, Xie L, Zhu G, Dela Cruz CS. et al. Epidemiologic and clinical characteristics of novel coronavirus infections involving 13 patients outside Wuhan, China. *JAMA* 2020;323(11):1092.
- [12] Chu H, Zhou J, Wong BH, Li C, Cheng Z, Lin X. et al. Productive replication of middle east respiratory syndrome coronavirus in monocyte-derived dendritic cells modulates innate immune response. *Virology* 2014;454:197–205.
- [13] Zhou J, Chu H, Li C, Wong BH, Cheng ZS, Poon VK. et al. Active replication of middle east respiratory syndrome coronavirus and aberrant induction of inflammatory cytokines and chemokines in human macrophages: implications for pathogenesis. *J Infect Dis* 2014;209(9):1331–42.
- [14] Kong SL, Chui P, Lim B, Salto-Tellez M. Elucidating the molecular physiopathology of acute respiratory distress syndrome in severe acute respiratory syndrome patients. *Virus Res* 2009;145(2):260–9.
- [15] Kim KD, Zhao J, Auh S, Yang X, Du P, Tang H. et al. Adaptive immune cells temper initial innate responses. *Nat Med* 2007;13(10):1248–52.
- [16] Palm NW, Medzhitov R. Not so fast: adaptive suppression of innate immunity. *Nat Med* 2007;13(10):1142–4.
- [17] Liu J, Liu Y, Xiang P, Pu L, Xiong H, Li C. et al. Neutrophil-to-lymphocyte ratio predicts severe illness patients with 2019 novel coronavirus in the early stage. medRxiv 2020 [Preprint]. February 12, 2020 [cited 2020 Feb 16]. Available from: doi: 10.1101/2020.02.10.20021584.
- [18] Wang F, Nie J, Wang H, Zhao Q, Xiong Y, Deng L. et al. Characteristics of peripheral lymphocyte subset alteration in COVID-19 pneumonia. *J Infect Dis* 2020 published online Mar 30. doi: 10.1093/infdis/jiaa150.
- [19] Channappanavar R, Perlman S. Pathogenic human coronavirus infections: causes and consequences of cytokine storm and immunopathology. *Semin Immunopathol* 2017;39(5):529–39.