

# UCSF

## UC San Francisco Previously Published Works

### Title

Loss of Wdfy3 in mice alters cerebral cortical neurogenesis reflecting aspects of the autism pathology.

### Permalink

<https://escholarship.org/uc/item/8x29d6jn>

### Journal

Nature communications, 5(1)

### ISSN

2041-1723

### Authors

Orosco, Lori A  
Ross, Adam P  
Cates, Staci L  
[et al.](#)

### Publication Date

2014-09-01

### DOI

10.1038/ncomms5692

Peer reviewed



Published in final edited form as:

Nat Commun. ; 5: 4692. doi:10.1038/ncomms5692.

## Loss of *Wdfy3* in mice alters cerebral cortical neurogenesis reflecting aspects of the autism pathology

Lori A. Orosco<sup>1,2</sup>, Adam P. Ross<sup>1,2</sup>, Staci L. Cates<sup>1,2</sup>, Sean E. Scott<sup>5</sup>, Dennis Wu<sup>2,5</sup>, Jiho Sohn<sup>2</sup>, David Pleasure<sup>2,3</sup>, Samuel J. Pleasure<sup>4</sup>, Iannis E. Adamopoulos<sup>2,5</sup>, and Konstantinos S. Zarbalis<sup>1,2,\*</sup>

<sup>1</sup>Department of Pathology and Laboratory Medicine, University of California at Davis

<sup>2</sup>Institute for Pediatric Regenerative Medicine, Shriners Hospitals for Children, Northern California, 2425 Stockton Boulevard, Sacramento, CA 95817

<sup>3</sup>Departments of Neurology and Pediatrics, University of California at Davis

<sup>4</sup>Department of Neurology, Programs in Neuroscience, Developmental and Stem Cell Biology, UCSF Institute for Regeneration Medicine, University of California at San Francisco, Sandler Neurosciences Center, Box 3206, 675 Nelson Rising Lane, Room 214, San Francisco, CA 94158

<sup>5</sup>Department of Internal Medicine, University of California at Davis

### Abstract

Autism spectrum disorders (ASDs) are complex and heterogeneous developmental disabilities affecting an ever-increasing number of children worldwide. The diverse manifestations and complex, largely genetic etiology of ASDs pose a major challenge to the identification of unifying neuropathological features. Here we describe the neurodevelopmental defects in mice that carry deleterious alleles of the *Wdfy3* gene, recently recognized as causative in ASDs. Loss of *Wdfy3* leads to a regionally enlarged cerebral cortex resembling early brain overgrowth described in many children on the autism spectrum. In addition, affected mouse mutants display migration defects of cortical projection neurons, a recognized cause of epilepsy, which is significantly comorbid with autism. Our analysis of affected mouse mutants defines an important role for *Wdfy3* in regulating neural progenitor divisions and neural migration in the developing brain. Furthermore, *Wdfy3* is essential to cerebral expansion and functional organization while its loss-of-function results in pathological changes characteristic of ASDs.

---

With a global median prevalence of 62 per 10,000 autism spectrum disorders (ASDs, used interchangeably with autism in this paper) are among the most common neurodevelopmental

---

Users may view, print, copy, and download text and data-mine the content in such documents, for the purposes of academic research, subject always to the full Conditions of use:[http://www.nature.com/authors/editorial\\_policies/license.html#terms](http://www.nature.com/authors/editorial_policies/license.html#terms)

\*To whom correspondence should be addressed. kzarbalis@ucdavis.edu.

#### Author contributions

L.A.O., A.P.R., S.L.C., S.E.S., D.W., I.E.A., and K.S.Z. conceived and designed the experiments. L.A.O., A.P.R., S.L.C., S.E.S., D.W., and K.S.Z. performed the experiments. L.A.O., A.P.R., S.L.C., S.E.S., D.W., J.S., D.P., S.J.P., I.E.A., and K.S.Z. analyzed the data. J.S., D.P., S.J.P., and I.E.A. contributed reagents/materials/analysis tools. L.A.O., A.P.R., S.L.C., and K.S.Z. wrote the paper.

#### Competing Financial Interests

The authors declare no competing financial interests.

conditions<sup>1</sup>. ASDs typically become apparent after the second year of life and are characterized by a triad of behavioral deficits affecting reciprocal social interaction, language development, as well as interests and activities<sup>2</sup>. In recent years, a strong, albeit very heterogeneous, genetic component to the etiology of ASDs has been recognized<sup>3-7</sup>. Estimates from these studies suggest that genes causative in the pathology of ASDs may number in the hundreds, and possibly up to a thousand, but may converge on just a few basic cellular pathways. For instance, several mutations were identified in genes encoding factors required for synaptic connectivity and signaling, thus highlighting functional defects at the chemical synapse as one physiological root cause of ASDs<sup>8-10</sup>. In addition, several independently replicated studies identified anomalies in brain development resulting in early brain overgrowth as a common feature in a subset of individuals with ASDs<sup>11-13</sup>. Recently, the cause of this overgrowth in the prefrontal cortex has been found to be centered on a long-suspected increase in projection neuron numbers<sup>14</sup>. Intriguingly, a current study described excess of neurons in autism to be also associated with patches of disrupted laminar organization of the cerebral cortex<sup>15</sup>. As cerebral cortical neurogenesis and layer formation occurs exclusively during late embryonic and fetal development<sup>16</sup>, these studies provided strong evidence for a prenatal origin of many autism cases. This notion was further strengthened by the analysis of coexpression networks of known autism disease genes, which implicate midfetal deep layer projection neurons as a point of convergence for the autism pathology<sup>17</sup>. Two interesting features, whose significance and causes remain uncertain at this point, have been linked to early brain overgrowth-associated autism. First, brain enlargement is noticeable only in early childhood, typically plateaus around age seven, and often regresses later in life compared to unaffected controls<sup>11-13</sup>. Second, size increases appear regionally restricted to frontal and temporal lobes while parietal and occipital lobes appear mostly unaffected<sup>11,13</sup>.

Previous genomewide linkage analysis identified an autism susceptibility locus at 4q with a peak between markers D4S2361 and D4S2909 (4q21.23-22.3)<sup>18</sup>. In addition, an autism case was described with a 16.5 Mbp deletion at 4q21.23-q24<sup>19</sup>. This region contains the *WDFY3* gene, in which a *de novo* nonsense mutation was recently identified in a child on the autism spectrum from the Simons Simplex Collection<sup>7</sup>. Taken together, these results suggest that *WDFY3* is a human disease gene that, if mutated, leads to autism. Interestingly, the sole known function of *WDFY3* is to act as an adaptor protein by linking specific proteins destined for degradation to the core autophagic machinery in a process termed selective macroautophagy. *WDFY3* is a member of the BEACH (**beige and CHS** proteins) protein family and contains in addition to the BEACH domain five WD40 domains and a C-terminal FYVE (**F**ab1/**Y**OTB/**V**ac1/**E**EA1) domain<sup>20</sup>. *WDFY3* has been shown to interact directly with the lipid membrane component phosphatidylinositol 3-phosphate through its FYVE domain<sup>20</sup>, with Atg5 through its WD40 repeats<sup>21</sup>, and with P62 through its BEACH domain<sup>22</sup>. However, the way in which *WDFY3* influences typical brain development and how its loss-of-function may precipitate neurodevelopmental anomalies underlying ASDs remained unexplained and warranted closer examination. Through the analysis of two separate lines of *Wdfy3*-deficient mice, one generated by random mutagenesis and one by gene targeting, we have identified an essential role for *Wdfy3* in cerebral cortical histogenesis. *Wdfy3* loss-of-function in our mouse models leads to both an increase in

proliferative neural progenitor divisions resulting in an increase in cerebral cortical size as well as focal cortical dysplasias.

## Results

### Abnormal brain morphology in *Wdfy3* mutant mice

In a forward genetic screen aimed at identifying mutations affecting forebrain development, we recovered a line of mice displaying loss of thalamocortical connectivity inherited in an autosomal recessive manner<sup>23</sup>. We named the line *disconnected* (*disc*) and, by positional mapping, restricted the mutation to a 2.46 Mbp interval on chromosome 5 containing 10 protein-coding genes (Fig. 1A). Sequencing of all coding sequences, splice sites, and an average of 50 bp of adjacent introns of the genes within the interval identified a single nonsense mutation in exon 59 of 67 of the *Wdfy3* gene (T to A at position 9,683 of NM\_172882, aa 3,046 of 3,508; Fig. 1b, c). *Wdfy3* has been characterized as a crucial component of the autophagy pathway for mediating the selective autophagic degradation of macromolecular components such as aggregation-prone proteins<sup>20-22</sup>. Homozygote *disc* mutants die perinatally for unknown reasons while heterozygotes show no overt neurodevelopmental anomalies, have a normal lifespan, and are fertile.

First, we examined forebrain morphology and focused our attention on the cerebral cortex. Analysis of the whole-mount mutant brains at embryonic day (E) 18.5 revealed no overt changes in *disc* heterozygotes compared to wild-type (WT), however homozygous mutants showed a characteristic enlargement of the most frontal aspects of the cortex accompanied by a reduction in the size of the olfactory bulbs (Fig. 1d and Supplementary Fig. 1). We then expanded our analysis of morphological changes in affected *disc* mutants by examining Nissl-stained coronal sections of various developmental stages. Our analysis revealed that, starting as early as E 11.5, the forebrain of *disc/disc* mutants shows overt neurodevelopmental anomalies affecting the ganglionic eminences, which appear with a less rounded outline, while the ventricles are enlarged (Supplementary Fig. 2). These anomalies continue to persist at later stages, during which also the cerebral cortex of homozygous *disc* mutants appears affected, by being visibly thinner and tangentially longer compared to WT controls (Fig. 1e - g). By taking measurements of individual morphological parameters of cortical sections during a period of peak neurogenesis (E15.5), we identified the most striking change to be a significant 62% increase in mutant neocortical length (Student's *t*-test,  $p < 0.001$ , WT  $n=7$ , *disc/disc*  $n=5$ ; Fig. 1e, g). Interestingly, neocortical thinning was not uniform along the dorsoventral axis of the neocortex but gradually decreased towards dorsal positions and was only significant at the most lateral measurement site (L) where the *disc/disc* neocortex was reduced by approximately 20% compared to WT (Student's *t*-test,  $p < 0.01$ ) (Fig. 1e, g). Closer examination of cortical segments revealed that the proliferative regions of the ventricular and subventricular zones (VZ, SVZ) as well as the intermediate zone (IZ) were thinner in *disc/disc* mutants, while the cortical plate (CP) and marginal zone (MZ) were not affected in thickness at this stage in development (Fig. 1f). With the combined effects of the lengthening and thinning of the neocortex, the total neocortical area is significantly enlarged in the *disc/disc* mutants by about 30% (Student's *t*-test,  $p < 0.02$ ). As cortical measurements excluded any extracortical space, and in particular ventricular space,

any cortical area increase in the *disc/disc* mutants does not reflect ventricular enlargement in these mice. These phenotypic changes are fully penetrant, observed throughout prenatal development, and are of no tangible variability on different genetic backgrounds. In contrast, heterozygous *disc* mutants do not show any of these neurodevelopmental anomalies and appear phenotypically WT (Supplementary Fig. 1). In summary, our findings demonstrate a tangential expansion but lateral thinning of the neocortical neuroepithelium, potentially pointing towards an imbalance in the mode of cortical progenitor cell divisions favoring proliferative over differentiative divisions, as previously shown in more severely affected mutant mouse models<sup>24,25</sup>. Furthermore, our findings of anterolateral regional enlargement appear consistent with several reports of transient megalencephaly in autism predominantly affecting frontal and temporal cerebral aspects<sup>26-30</sup>.

### Wdfy3 regulates the proliferation of neural progenitors

Since morphological analysis suggested a proliferative shift of progenitor divisions in the *disc/disc* mutant brains, we decided to assess the number of Pax6<sup>+</sup> cortical radial glia cells<sup>31</sup> in the *disc/disc* mutant and compare it to the WT. In the developing cortex, the cells predominantly generated through symmetric proliferative divisions are radial glia and a shift towards such divisions should increase the Pax6<sup>+</sup> radial glia population. Indeed, by measuring the area of Pax6<sup>+</sup> cells along the cortical VZ of the *disc/disc* mutant, we found it to be significantly increased compared to the WT at stages E12.5 and E14.5 (Student's *t*-test,  $p < 0.04$  and  $p < 0.05$  respectively,  $n = 3$  either genotype and stage; Fig. 2a, b). No changes were detected in the density of Pax6<sup>+</sup> cells within the VZ (Fig. 2c, d). Interestingly, a thinning of the Pax6<sup>+</sup> VZ was observed at E14.5 at the most lateral positions consistent with the previous morphological analysis. Taken together these data demonstrate that the functional loss of *Wdfy3* results in an increase in the proliferation of Pax6<sup>+</sup> radial glia at the neocortical VZ.

An increase in proliferative divisions of radial glia in *disc/disc* embryos may occur on the expense of differentiative divisions, negatively affecting the number of Tbr2<sup>+</sup> intermediate progenitors, which are predominantly generated through differentiating symmetric divisions of radial glia cells<sup>31-33</sup>. To follow up on this question, we assessed the number of intermediate progenitors by analyzing the extent of the Tbr2<sup>+</sup> area and density of Tbr2<sup>+</sup> cells at E15.5. Indeed, our analysis confirmed significant reductions in both domains in the *disc/disc* mutants (Student's *t*-test,  $p < 0.0001$  for area and density,  $n = 4$  either genotype). Specifically, we found the Tbr2<sup>+</sup> area encompassing the VZ and SVZ to be reduced by approximately 30% and density of Tbr2<sup>+</sup> cells to be reduced by approximately 50% (Fig. 2e - h). This finding provides further support for the concept that the increase of proliferative divisions in homozygous *disc* embryos may occur on the expense of differentiating divisions producing intermediate progenitors.

As changes in proliferation dynamics of the *disc/disc* mutants will likely have consequences for developmental neurogenesis, we also assessed the number of postmitotic cells generated at E15.5 near the peak period of neurogenesis in the mouse. To that effect, we employed a 24 h thymidine labeling approach using 5-ethynyl-2'-deoxyuridine (EdU). To take into consideration the regional differences in cortical malformation present in the *disc/disc*

embryos, we counted all EdU<sup>+</sup> cells that had migrated basal to the SVZ within an entire hemisphere. To label and exclude cells still undergoing division, we used the proliferation marker Ki67. Using this approach, we identified a significant reduction of approximately 25% in EdU<sup>+</sup>/Ki67<sup>-</sup> cells in the *disc/disc* mutants (Student's *t*-test,  $p < 0.0005$ ,  $n = 4$  either genotype), largely driven by loss of postmitotic cells in the thinner basolateral cortical aspects (Fig. 2i, j). Interestingly, assessing in 200  $\mu\text{m}$  wide cortical segments the quit (Q)-fraction of cells that had exited the cell cycle, we found it to be significantly increased by approximately 20% in the *disc/disc* embryos (Student's *t*-test,  $n = 4$  either genotype,  $p < 0.0005$ ; Fig. 2i, j). This finding likely points towards a more rapid turnover of intermediate progenitors into neurons, despite the overall reduced number of Tbr2<sup>+</sup> cells.

A central role has been recognized in the duration of the cell cycle of cortical neural progenitors for the sequential generation of neurons, as cell cycle length increases from inner to outer layer neuron production. In the mouse, this leads to more than doubling of cell cycle length during the course of cerebral cortical neurogenesis between E11 and E17, largely driven by an increase in G1 phase<sup>34</sup>. Furthermore, multiple studies have connected cell cycle length to the mode of progenitor divisions<sup>35-39</sup>. As our data supported the concept of changes in the mode of neural progenitor divisions in *disc/disc* mutants, we investigated whether these changes are also associated with altered cell cycle kinetics in affected *disc* mutants compared to the WT. To examine cell cycle progression in neural progenitors, we opted for a dual thymidine labeling approach following previously established paradigms<sup>40,41</sup>. Specifically, we injected pregnant mice with EdU followed 1.5 h later by an injection with 5-bromo-2'-deoxyuridine (BrdU) and sacrificed the embryos 30 min thereafter. As a result, cells which remained throughout the duration of the experiment in S phase were labeled with EdU and BrdU, while cells which exited S phase prior to BrdU exposure were labeled with EdU only. Cells that entered S phase at the end of the experiment were labeled predominantly with BrdU. The duration of the experiment ( $T_1$ ) was divided by ratios of single over double-labeled cells to generate estimates of S phase length ( $T_S$ ) and total cell cycle length ( $T_C$ ). Analyzing cortical segments in this manner, we found the length of  $T_S$  to be significantly decreased from approximately 3.6 h in the WT to 2.5 h in the *disc/disc* mutants at E13.5 (Student's *t*-test,  $p < 0.02$ ,  $n = 4$  either genotype; Fig. 2k, l). Correspondingly,  $T_C$  was found significantly decreased from approximately 9.8 h in the WT to 6.8 h in the *disc/disc* mutants confirming a more rapid mode of progenitor divisions in affected mutants.

To further explore the idea that *Wdfy3* regulates the proliferation of cortical progenitor cells, we next examined the developmental distribution of *Wdfy3* using both RNA *in situ* hybridization and immunofluorescence analysis. RNA *in situ* hybridization analysis at E13.5 revealed highest *Wdfy3* expression within the proliferative regions surrounding the ventricles (Supplementary Fig. 3a). Immunofluorescent analysis shows specific expression in the leptomeninges, cortical intermediate zone, choroid plexus, and clusters of cells within the VZ (Supplementary Fig. 3b). Upon closer examination of the VZ, *Wdfy3* expression is observed in a subset of cells actively undergoing mitosis (Fig. 3A). *Wdfy3* expression persists through all phases of cell division, but becomes decreased during telophase. *Wdfy3* expression is often maintained in radial units (possibly clones), which include also

nondividing cells, and are projecting into the SVZ. Within these radial units, *Wdfy3* expression appears highest in progenitors closest to the ventricle then gradually diminishes as distance from the ventricular surface increases. In nondividing cells, *Wdfy3* localization appears largely cytosolic with possible perinuclear enrichment and presence in the glial endfeet. Moreover, co-labeling with Pax6, a marker for cortical radial glia, revealed that all *Wdfy3*<sup>+</sup> cells in the VZ are radial glia cells, while Tbr2<sup>+</sup> intermediate progenitors of the SVZ do not express *Wdfy3* (Fig. 3b). *Wdfy3*<sup>+</sup> cells present only a subset of dividing progenitors and are surrounded by *Wdfy3*<sup>-</sup> mitotic cells. To further evaluate whether loss of *Wdfy3* function in the *disc/disc* embryos had an effect on cellular proliferation within the VZ, we analyzed the number of phospho-histone H3<sup>+</sup> (pHH3) mitotic cells that were also *Wdfy3*<sup>+</sup> and compared them to the WT at stages E12.5 and E14.5 (Fig. 3c, d). For both stages, we found a significant reduction in the percentage of *Wdfy3*<sup>+</sup> mitotic cells in the mutant (Student's *t*-test, *p*<0.004 and *p*<0.0003 respectively, *n*=4 either genotype and stage) further supporting the notion that *Wdfy3* is required for a specific subset of progenitor divisions and its loss-of-function will impair *Wdfy3*<sup>+</sup> mitoses. To test whether loss of *Wdfy3* may also result in loss of cells through cell death, we assessed the number of apoptotic cells by employing a terminal deoxynucleotidyl transferase dUTP nick end labeling (TUNEL) assay. By counting TUNEL<sup>+</sup> apoptotic cells throughout entire cortical hemispheres, we see no significant differences between WT and *disc/disc* embryos (Student's *t*-test; Supplementary Fig. 4), further confirming that cell loss is not a contributing factor to the morphological anomalies present in the *Wdfy3*-deficient cortex.

To examine in greater detail the characteristics of the cortical dysplasia in the *disc/disc* mice, we next analyzed the distribution of the cortical layer-specific markers Tbr1 (layer 6) and Ctip2 (layer 5) at postnatal day (P) 0 to determine if any defects in radial migration or cortical lamination were present. Our analysis revealed that exclusively within the somatosensory area of the *disc/disc* mutant neocortex heterotopic clusters of cells migrate to superficial laminar positions forming focal cortical dysplasia (Fig. 4). Most heterotopia are comprised of only a few dozen cells with limited radial dispersion suggesting a possible origin from *Wdfy3*<sup>+</sup> clusters undergoing pathological changes in *disc/disc* mutants. Interestingly, multifocal neocortical dysplasias are also a described feature of the autism pathology and underlying cause of epilepsy, which shows strong comorbidity to autism<sup>15,42</sup>.

### Abnormal brain morphology in transgenic *Wdfy3* mutants

While the homozygous *disc* mice demonstrate several interesting characteristics of commonly described human ASD-like neuroanatomical defects, the animals die at birth while heterozygous *disc* carriers do not display any overt neurodevelopmental alterations, thus imposing limitations on utilizing this line as a suitable autism model. To further facilitate our analysis of *Wdfy3* function in neural development and possibly create a more suitable model of human disease, we developed a series of alternative *Wdfy3*-alleles (*Wdfy3*<sup>lacZ</sup>, *Wdfy3*<sup>loxP</sup>) using targeted mutagenesis in collaboration with the Knockout Mouse Project and Mouse Biology Program at UC Davis (Supplementary Fig. 5). Comparably to homozygous *disc* mutants, homozygous *lacZ* mice die perinatally for unknown reasons while *lacZ* heterozygotes have a normal lifespan and are fertile.

Morphological analysis of brains of *+lacZ* and *lacZ/lacZ* newborn pups revealed similar but more severe phenotypic changes compared to *+disc* and *disc/disc* mice respectively (Fig. 5a - c). The *lacZ/lacZ* brains show an even more drastic thinning and lengthening of the neocortex compared to homozygous *disc* mutants. We measured the overall cerebral size increase of the *lacZ/lacZ* brains to be approximately 13% (Student's *t*-test,  $p < 0.02$ , WT  $n = 5$ , *lacZ/lacZ*  $n = 4$ ). Similar to the *disc/disc* mice, the *lacZ/lacZ* mutants exhibit a significant 16% reduction in cortical thickness only in the most lateral position (Student's *t*-test,  $p < 0.02$  in comparison to WT), but an observable trend towards thinning throughout the cortex. However, unlike the *+disc* mice, the *+lacZ* mice display a mild, but significant increase in cortical length of approximately 19% (Student's *t*-test,  $p < 0.04$ , WT  $n = 5$ , *+lacZ*  $n = 8$ ). This cortical lengthening, however, does not result in a significant overall cortical size increase in *+lacZ* mutants (Student's *t*-test).

*Wdfy3<sup>lacZ</sup>* mice express, the *lacZ* reporter gene, which encodes  $\beta$ -galactosidase ( $\beta$ -gal), a long-lived enzyme that is transferred to the progeny of dividing cells. Consequently, the analysis of  $\beta$ -gal expression allowed us to lineage trace the progeny of *Wdfy3<sup>+</sup>* progenitors. In all stages examined (E11.5, E13.5, E15.5, and P0), the meninges and MZ displayed a high density of  $\beta$ -gal<sup>+</sup> cells (Fig. 5d and data not shown). The VZ and SVZ contained  $\beta$ -gal<sup>+</sup> cells scattered throughout, but often clustered as seen by *Wdfy3* immunofluorescence. Occasionally, columns of  $\beta$ -gal<sup>+</sup> cells could be identified extending radially from the proliferative zones to the cortical plate, which was heavily populated by  $\beta$ -gal<sup>+</sup> cells at later stages (Supplementary Fig. 6).

In order to confirm the identity of *Wdfy3* lineage cells expressing  $\beta$ -gal, we stained sections of P0 brains for  $\beta$ -gal expression and then performed immunohistochemistry to co-label with NeuN, a nuclear marker of mature neurons, and GFAP, a cytosolic marker for astrocytes and certain neural progenitors. NeuN staining highly colocalizes with  $\beta$ -gal staining, confirming that many, but not all neurons originate from *Wdfy3<sup>+</sup>* radial glia cells (Fig. 5e). Similarly, GFAP colocalization is seen for some but not all  $\beta$ -gal<sup>+</sup> cells demonstrating that *Wdfy3<sup>+</sup>* progenitors also contribute to the astroglial lineage (Fig. 5e).

The *lacZ/lacZ* mice, exhibit focal cortical dysplasias just as the *disc/disc* mutants albeit at a higher frequency. The dysplasias typically reach the marginal zone as analysis of both Nissl-stained sections and *Tbr1/Ctip2* immunofluorescently-labeled sections revealed (Fig. 6). Moreover, the positioning of the observed heterotopias in the *lacZ/lacZ* mice is not restricted to lateral aspects of the somatosensory area of the neocortex as they are in the *disc/disc* mice, but can also be found more dorsally in the motor area and can even affect the hippocampus (Fig. 6b). In contrast, no focal cortical dysplasias were identified *+lacZ* mice.

In order to provide a molecular explanation for the observed differences in severity between the *disc* and *lacZ* alleles, we sought to examine *Wdfy3* protein expression through western blot analysis. We noted that while many *Wdfy3* isoforms can be assessed with this method, the largest 400 kDa isoform encoded by full-length *Wdfy3* could not be reliably detected, possibly due to a combination of low expression levels, inaccessibility to common lysis protocols, and size-dependent inefficient blot transfer. To circumvent this problem, we employed *Wdfy3* co-immunoprecipitation to provide for a relative enrichment of *Wdfy3*



protein in examined lysates. Using this method, we are able to routinely visualize the Wdfy3 400 kDa isoform, but only in WT while in lysates of homozygous *disc* and *lacZ* mutants the 400 kDa isoform is always absent (Supplementary Fig. 7b, full size blots in Supplementary Fig. 9). No other isoforms are noticeably affected between mutant genotypes and WT controls. While the observed loss of one Wdfy3 isoform appears plausible for the point mutation of the *disc* allele it is somewhat surprising for the *lacZ* allele, which was generated through homologous recombination involving the insertion of transgenic cassettes carrying stop codons and polyadenylation signals designed to disrupt transcription (Supplementary Fig. 5). To further examine the genetic consequences of the *lacZ* allele-mediated *Wdfy3* gene disruption, we analyzed *Wdfy3* transcripts through reverse transcription PCR on cDNA samples prepared from E14.5 brains. Using primers that span the transgenic gene disruption, we confirmed alternate read-through transcripts in *lacZ* allele mutants (Supplementary Fig. 7c). In summary, our results provide evidence that both *Wdfy3* alleles examined for this study present hypomorphs in which Wdfy3 isoforms are preserved retaining some Wdfy3 function in homozygous mutants of either allele.

Two recent studies provided evidence that *Wdfy3* mRNA binds and is likely translationally regulated by the fragile X mental retardation 1 (Fmr1) protein<sup>7,43</sup>. This interesting association prompted us to examine by immunofluorescent analysis whether Fmr1 protein is, possibly through a feedback mechanism, differentially distributed in *disc/disc* mutants. Analysis, of cortical sections at E15.5 showed no difference in expression levels or distribution of Fmr1 in *disc/disc* embryos compared to WT (Supplementary Fig. 8).

### No change in autophagic flux of *Wdfy3*<sup>*disc/disc*</sup> mutants

Previous studies provided evidence that Wdfy3 functions as a scaffolding protein, which directs cargo destined for macroautophagic degradation into autophagosomes. In order to do so, Wdfy3 directly interacts with the cargo-autophagy receptor complex through P62 the core autophagy machinery through Atg5, and with phosphatidylinositol 3-phosphate (PI3P) of autophagic membranes<sup>20-22</sup>. To gain greater insight into the molecular deregulations caused by loss of Wdfy3 in the *disc/disc* brain, we next investigated whether there were notable changes in the regulation of macroautophagy, the only cellular process Wdfy3 is currently known to play a role in. To assess macroautophagic flux, we opted to examine protein levels of LC3II and P62, two well-described markers associated with autophagic vesicles<sup>44,45</sup>. To that effect, we prepared native forebrain lysates from E12.5 and E15.5 WT and *disc/disc* mice. Western blot analysis of these lysates showed no significant differences between genotypes when probed with antibodies against LC3 or P62 (Student's *t*-test, n=3 for either genotype and stage; Fig. 7a, b). Furthermore, immunofluorescent analysis in primary neuronal cultures derived from E13.5 WT and *disc/disc* embryos showed no significant differences in size or density of P62<sup>+</sup> puncta (autophagosomes) between the genotypes (Student's *t*-test, n=3 for either genotype; Fig. 7c, d). As Wdfy3 functions as a scaffolding protein for P62-bound ubiquitinated proteins<sup>22</sup>, presumably required for their autophagosomal targeting and subsequent degradation, we examined whether in the *disc/disc* mutant brain there is an accumulation of ubiquitinated proteins. Western blot analysis of lysates prepared from E12.5 and E15.5 WT and *disc/disc* forebrains revealed no significant changes in the total amount of mono- and polyubiquitinated conjugates

(Student's *t*-test, *n*=3 for either genotype; Fig. 7e, f). In summary, our results support the notion that loss of *Wdfy3* in the *disc/disc* mutant does not lead to noticeable changes in autophagic processing during developmental neurogenesis despite the well-characterized role of this molecule in selective macroautophagy.

## Discussion

Our results demonstrate an essential role for the recently recognized autism factor *Wdfy3* in regulating the proliferation of neural progenitors during cerebral cortical neurogenesis in the mouse. *Wdfy3* loss-of-function alleles lead to an increase in symmetric proliferative divisions of radial glia, likely at the expense of differentiative mitoses that produce intermediate progenitors. The morphological consequences of this proliferative shift include a longer, thinner, and regionally enlarged cerebral cortex. Intriguingly, both *Wdfy3*-deficient mice and a subset of young children on the autism spectrum show abnormal cortical overgrowth in a stereotypical gradient, which is greatest at anterolateral aspects and decreases towards posteromedial areas<sup>26-30</sup>. In humans, these anterolateral cortical regions most prone to early overgrowth contain important centers of affective, social, and language function suggesting that pathological regional cortical expansion and autism core deficiencies are tightly linked<sup>2,12</sup>. A region of particular significance for affective function is the insula of the temporal cortex, an area important for interoception and emotional processing<sup>46</sup>. Social domains important for determining social value, reward, and reinforcement include the orbitofrontal cortex, the ventrolateral prefrontal cortex, superior temporal sulcus, and the insula<sup>46-50</sup>. Repetitive or stereotypical behaviors in autism appear to share characteristics with obsessive-compulsive disorders, which are apparently centered on dysfunctions of the orbitofrontal cortex, further implicating this most anterior cortical domain in the autism pathology<sup>51</sup>. Several cortical and subcortical domains control language function, while expressive language, often impaired in autism, is centered in Broca's area of the frontal cortex<sup>52</sup>. The importance of frontal cortical aspects in this context was further demonstrated by a recent study, which found that functional connectivity between Broca's area of the dorsolateral prefrontal cortex to be decreased in autism presenting with language impairments<sup>53</sup>. Importantly, the megalencephaly of affected *Wdfy3* mutants presented in this study replicates the gradient of cortical differentiation, which starts anterolaterally and proceeds posteromedially as developmental neurogenesis unfolds<sup>54</sup>. This engrossing correlation suggests that disturbances in the routine of neural progenitor divisions and the associated temporal program of cortical growth and differentiation may underlie the development of ASDs associated with early brain overgrowth. In particular, an early expansion of the radial glia population through excess symmetric self-renewing divisions leading to an increase in cortical growth may be a crucial component in autism-linked transient megalencephaly. Loss of *Wdfy3* provides an explanation for such phenotypic changes by linking defects in progenitor divisions to early brain overgrowth and strongly suggesting an essential role for abnormal proliferation dynamics in the autism pathogenesis. Additional support for the concept of altered neural progenitor divisions in affected *Wdfy3* mutants comes from population level analysis of cell cycle progression. In *disc/disc* mutants the cell cycle is shortened by approximately 30% compared to WT in agreement with the notion that for the cortex to grow larger over the same period of time, progenitor cells will

have to divide faster to produce the observed size increase. Several studies have revealed causative links between cell cycle length and mode of progenitor division, with the long-held concept of shorter cycles producing proliferative symmetric divisions<sup>35-38</sup> being recently challenged by findings that neural progenitors shorten the cell cycle prior to neurogenic divisions<sup>39</sup>. This latest study seemingly conflicts with the finding of a shortened cell cycle in *disc/disc* mutants, as the number of Pax6<sup>+</sup> radial glia, which are generated exclusively through slower paced, symmetric proliferative divisions, is increased. However, the conflict can be resolved by taking the Tbr2<sup>+</sup> intermediate progenitors into account. Intermediate progenitors have a substantially longer cell cycle than radial glia cells<sup>39</sup> and the number of intermediate progenitors in the *disc/disc* mutants is reduced by about 50%, thus likely overcompensating for the cell cycle length increase of additional radial glia-producing divisions and depressing cell cycle length in our population level analysis.

While several studies have identified significant comorbidity of epilepsy with autism, with co-diagnoses reaching up to 40% of autism cases, the mechanisms underlying this correlation have remained elusive<sup>55,56</sup>. A possible explanation for the high prevalence of epilepsy in the autism population is evidence from neuropathological studies confirming focal cortical dysplasia, a well-described developmental cause of intractable epilepsy, in children on the autism spectrum<sup>15,42</sup>. Additional support for the concept was provided by the analysis of *Cntnap2*<sup>-/-</sup> mice, which show both autism-relevant behavioral deficits and epileptic seizures caused by neuronal migration defects<sup>57</sup>. Our data support these findings by clearly showing that loss of *Wdfy3* not only produces an autism-like enlarged cortex but also changes the migratory behavior of cortical projection neurons resulting in focal cortical dysplasia.

Interestingly, we found *Wdfy3* message and protein expression to not match exactly in the proliferative compartments of the developing cerebral cortex. While *Wdfy3* mRNA shows a uniform expression, *Wdfy3* protein expression is selectively upregulated in a subset of predominantly dividing progenitors found in the VZ. This unusual finding is not unprecedented as comparison to G-protein-signaling modulator 2 (*Gsmg2*) expression demonstrates. Comparable to *Wdfy3*, *Gsmg2* mRNA expression is present throughout the VZ while *Gsmg2* protein is strictly upregulated in dividing progenitors adjacent to the ventricle<sup>58</sup>. While speculative, we suspect that the rapid cycling of radial glia may necessitate the precise timing of transient *Wdfy3*-upregulation during M phase to be controlled through translation only rather than transcription and translation. This model would suggest that proliferating cells may express *Wdfy3* mRNA at all times, awaiting recruitment for translation during mitosis. It is not uncommon to have protein expression tightly regulated at the level of translation, as opposed to regulation at the transcriptional level. Recent analysis of highly sensitive measures of mRNA and protein expression level correlation have shown that mRNA levels only account for up to 40% of the variance of protein abundance levels, with many proteins being expressed from a very small number of message copies<sup>59</sup>. RNA binding proteins, such as fragile X mental retardation 1 (*Fmr1*), are known for their pervasive involvement in developmental translation repression, a tool highly utilized during development to allow rapid translational activation of proteins upon proper signaling within a cell<sup>60,61</sup>. While *Wdfy3* regulation/activation mechanisms are still not

clear, two recent studies have shown that Fmr1 physically associates with *Wdfy3* mRNA, which appears supportive of our hypothesis that *Wdfy3* expression in dividing neural progenitors is predominantly regulated at the translational rather than the transcriptional level<sup>7,43</sup>.

*Wdfy3* is an unusually large gene of 67 exons in the mouse, a full-length message of approximately 15 kb, and at least 9 different predicted splice variants (GenBank Accession numbers XM\_006535220.1 - XM\_006535228.1) Both *Wdfy3* alleles analyzed in this study appear to be hypomorphs in which several isoforms are preserved while only the largest 400 kDa *Wdfy3* isoform is detectably absent in homozygous mutants of either allele. The N-terminally targeted antibodies (human *Wdfy3*, residues 500 - 550) used here to assess protein expression by *Wdfy3* co-immunoprecipitation did not show any differences in the isoform profiles between the *disc* and *lacZ* allele. Nevertheless, the *lacZ* allele appears neurodevelopmentally clearly more severely affected than the *disc* allele, possibly due to the fact that the gene disruption in the *lacZ* allele occurs earlier (intron 7) than in the *disc* allele (exon 59), potentially compromising a greater number of splice variants/isoforms not detectable through our means of analysis.

Previous studies have characterized *Wdfy3* as a component of the macroautophagy pathway, predominantly involved in the selective degradation of specific proteins<sup>20-22</sup>. Consequently, we examined whether loss of *Wdfy3* in the brains of *disc/disc* embryos leads to any overt signs of macroautophagic deregulation. Interestingly, we were unable to detect any differences in autophagic flux between WT and *disc/disc* mice, as measured by levels of P62 and LC3-II expression as well as accrual of ubiquitinated proteins. A possible explanation for this unexpected result may lie in the fact that the *disc* allele appears to inactivate only the largest 400 kDa *Wdfy3* isoform, while other isoforms may still function sufficiently for proper autophagy regulation. Alternatively, *Wdfy3* may participate in the selective autophagic targeting of few and low-expressed proteins. As a consequence, neither does the accumulation of these proteins become detectable within the abundance of ubiquitinated proteins nor does it trigger overt changes in autophagy regulation in the *disc/disc* mutants. Finally, we have to consider that *Wdfy3* may fulfill additional functions in the cell other than autophagy regulation and the neurodevelopmental defects of the *Wdfy3*-mutants are a consequence of autophagy-independent processes. Some support for this notion comes from the fact that no other mutant mouse models with autophagy defects replicates any aspects of the developmental *disc/disc* pathology. For instance, *Ambra1<sup>g/gt</sup>* mutants have severe neurodevelopmental anomalies caused by excess proliferation and are exencephalic<sup>62</sup>. In contrast *Snai1<sup>-/-</sup>* mutant mice have reduced brain size and cell density due to an increase in apoptosis<sup>63</sup>. No neurodevelopmental defects have been reported yet for mutations in genes encoding Atg factors of the core autophagy machinery. Interestingly though, activation of mammalian target of rapamycin (mTOR), a major regulator of autophagy function leads also to pathological changes in cortical development including the formation of focal cortical dysplasia<sup>64</sup>.

Taken together, our study provides seminal evidence that *Wdfy3* is a critical regulator of cerebral cortical histogenesis. Loss of *Wdfy3* directly affects the proliferation of neural progenitors by shifting the mode of radial glia divisions from differentiative to proliferative.

This shift expands the population of radial glia cells, increases cortical size, and may be an important component in autism associated with the phenomenon of early brain overgrowth.

## Methods

### Positional mapping and candidate gene sequencing

The *disconnected* (*disc*) line was recovered in a forward genetic screen for recessive mutations disrupting forebrain development<sup>23</sup>. Positional mapping was performed by using simple-sequence length polymorphic markers available from the Whitehead Institute for Biomedical Research at MIT. Initial linkage was established after a genome-wide scan with 82 simple sequence repeat markers uniformly spaced across somatic chromosomes on 12 DNA samples from both carriers and affected embryos. For high-resolution meiotic mapping, we scored separate crosses resulting in 131 generated meioses (carriers and embryos counted). Using this approach, we located the *disc* mutation to an interval on chromosome 5 between markers D5Mit156 (101,537,451-101,537,557 bp) and D5Mit275 (103,997,680-103,997,803 bp) in the NCBI mouse assembly (Build 37.2, current assembly). The identified genetic interval contained 10 protein-coding genes of which all exons were amplified and sequenced from genomic DNA samples. For every set of primers, we used samples of the two parental strains (C57BL/6J and FVB/NJ) and two samples of affected mutants. All primer sequences are available upon request. Sequencing of candidate genes was performed at the Ernest Gallo Clinic and Research Center core sequencing facility using Applied Biosystems (Foster City, CA) Big Dye (3.1) reactions. Sequencing reactions were electrophoresed and analyzed in an Applied Biosystems Genetic Analyzer 3730XL. Sequence comparisons were carried out using Mutation Surveyor® DNA variant analysis software (SoftGenetics, LLC, State College, PA) and BLAST (National Center for Biotechnology Information). Sequences of insufficient quality or read length were dismissed from any comparisons and repeated with revised primer sets. To further confirm that the mutation in *Wdfy3* is causative, we genotyped a total of 869 embryos and pups (1738 meioses) from 108 litters of stages E13.5 to P0, which were easy to score. For genotype analysis, we used a restriction length polymorphism created by the *disc* allele (additional *DdeI* site) and confirmed that all 212 affected embryos carried the mutant variant in the homozygous state. The remaining phenotypically wild-type embryos, were either heterozygous carriers (438) or wild-type (218) in near perfect Mendelian distribution confirming also the absence of embryonic lethality in mutant embryos.

### Animal husbandry and genotyping

The colony of animals carrying the *Wdfy3<sup>disc</sup>* allele (induced on C57BL/6J background) was maintained by crossing male carriers with FVB/NJ females. This mode of outcross is currently in the fifth generation without any changes in penetrance or variability of the mutant neurodevelopmental phenotype. All embryos presented in the phenotypic analysis of this study were produced from carriers crossed for at least four generations onto an FVB/NJ background. Routine genotyping was performed by amplifying microsatellites D5Mit156 and D5Mit275. Mice were housed in facilities approved by the Association for Assessment and Accreditation of Laboratory Animal Care International. All animals were handled in

accordance with protocols approved by the University of California at Davis Institutional Animal Care and Use Committee.

### Generation of *Wdfy3<sup>lacZ</sup>* and *Wdfy3<sup>loxP</sup>* alleles/colonies

The vector construct, targeted embryonic stem (ES) cells, and chimeric founder mice used for this research project were generated by the trans-NIH Knock-Out Mouse Project (KOMP) and obtained from the KOMP Repository (Project ID: CSD66798; [www.komp.org](http://www.komp.org)). The *Wdfy3* knockout first, reporter-tagged insertion construct with conditional potential was generated following published protocols<sup>65</sup>. JM8A3.N1 ES cells heterozygous for the Agouti allele (*A/a*)<sup>66</sup> were screened for homologous recombination using TaqMan loss-of-negative-allele (LOA) quantitative PCR<sup>67</sup> and presence of the distal *loxP* cassette. Genomic LOA used the following target primers/probe: forward primer: AGCCTGGAACCTAACAGAAATCCTC, reverse primer: CCAGTGCAAATAAAGAACTAAATTAGAAGG, probe: 6FAM-TCTGCCTCTGTACACCACCACA-NFQ. Taqman *loxP* used the following target primers/probe: forward primer: GAGATGGCGCAACGCAATT, reverse primer: TGAAGTATGGCGAGCTCAGA, probe 6FAM - CTTCGTATAGCATAATTATACG - MGBNFQ. Quality control of ES cell clone DEPD00523\_5\_G11 used for morula aggregation included 5' arm long range PCR to reconfirm correct targeting, Taqman quantitative *lacZ* PCR to confirm single copy integration, confirmation of mycoplasma/parvovirus negative status, and chromosome counts of 10 metaphase chromosome spreads. Morula aggregation of targeted ES cells followed published protocols<sup>68</sup> and produced five chimeric founder males ranging from 55 - 85% ES cell contribution by coat color assessment. Of these, only one chimera (55% ES coat color contribution) transmitted the targeted allele to its offspring after breeding to C57BL6/N female mice. The *Wdfy3<sup>lacZ</sup>* line (*Wdfy3<sup>tm1a(KOMP)Mbp</sup>*) is maintained as heterozygous mutants on C57BL6/N background. *Wdfy3<sup>loxP</sup>* mice were generated after two successive rounds of breeding of *Wdfy3<sup>+/lacZ</sup>* mice to C57BL/6N-*Gt(ROSA)26Sor<sup>tm1(FLP1)Dym</sup>*/Mmucd mice, obtained from the UC Davis Mutant Mouse Regional Resource Center (strain #34413-UCD). Flp/*FRT*-mediated recombination produced expected PCR products assessed with Flp primers and absence of *lacZ* product assessed with *lacZ* primers (Supplementary Fig. 4). *Wdfy3<sup>loxP/loxP</sup>* mice do not show any overt behavioral or developmental anomalies and are maintained on C57BL6/N background. Oligonucleotide primers used to confirm vector integration (*lacZ* primers), correct homologous recombination (5'/3' arm primers), generation of homozygous mutants from crosses of heterozygote animals (k.o. primers), and Flp/*FRT*-mediated recombination (Flp primers) of the targeted locus are listed below: *lacZ* left: TTATGGCAGGGTGAACGCAGGTC, *lacZ* right: AAACCGACATCGCAGGCTTCTG; 5' arm external AATGTTTTGAGGTTGAGGGTTAGG, 5' arm internal TCGGAATAGGAACTTCGGTTCC; 3' arm internal: AACGCAATTAATGATAACTTCGTATAGC, 3' arm external: TTGGTCTATCAGACTAAAGACTGG; k.o. left: ACAGGTCTCTTTGGCTGAGG, k.o. right: AATGTCTTGCCTCGGAAAAG; Flp forward: AGTGCAAATAAAGAACTAAATTAGAAGG, Flp reverse: CATAACTTCGTATAATGTATGCTATACG

## Morphological Analysis

Comparable 20  $\mu\text{m}$ -thick coronal sections of forebrains were Nissl-stained and analyzed using Stereo Investigator (MBF biosciences, Williston, VT). Due to the morphological anomalies of the mutant cortices, thalamic landmarks were used to match sections of different genotypes. Specifically, sections were aligned based on overall thalamic size, shape and extent of the stria medullaris, and presence of the anterior thalamic nuclear complex. Neocortical length was measured along the lateral ventricle, from the cortico-striatal boundary to the dorsomedial apex as indicated in Fig. 1e. Straight lines extending perpendicularly from the above points to the pial surface defined the neocortical area boundaries, thus taking into account both neocortical thickness and length for area/size assessment. Neocortical thickness was measured at 3 positions: from the dorsomedial apex, measurements were taken at 10% [dorsal(D)], 50% [dorsomedial(DM)], and 90% [lateral(L)] along the total neocortical length, measuring radially from the ventricular surface to the pial surface.

## RNA In situ hybridization

RNA *in situ* hybridization was performed on 20  $\mu\text{m}$  thick sections of cryopreserved tissue from fixed E14.5 embryos using standard methods previously described<sup>69</sup>. Digoxigenin-labeled *Wdfy3* riboprobes were generated from an 864 bp cDNA fragment (nucleotides 4429-5292 of NM\_172882) ligated into the TOPO TA PCR4 vector (Invitrogen, New York). *In vitro* transcription was performed on linearized plasmids isolated from bacterial clones to produce DIG-labeled anti-sense (linearized with *NotI*, transcribed with T3 RNA polymerase) and sense probes (linearized with *SpeI*, transcribed with T7 RNA polymerase). RNA *in situ* hybridization experiments as well as all other histological analyses were performed at least three times on at least three embryos of each genotype and representative results documented.

## Immunofluorescence and EdU labeling

Depending on developmental stage, embryos were fixed by immersion (up to E13.5) or perfusion in 4% paraformaldehyde (PFA) in phosphate buffered saline (PBS). Subsequently, tissue was fixed for an additional 1-2 hours, immersed in 15% and then 30% sucrose in PBS, and cryoprotectively frozen to be sectioned at 8 - 20  $\mu\text{m}$ . Immunofluorescence was carried out on slide-mounted sections according to standard protocols using the following primary antibodies: mouse  $\alpha$ -*Wdfy3*, 1:250 (Abnova, Taiwan); rabbit  $\alpha$ -Pax6, 1:200 (Covance, Dedham, MA); rabbit  $\alpha$ -Tbr2 1:400 (Abcam, Cambridge, MA); rabbit  $\alpha$ -Histone H3 1:500 (Abcam, Cambridge, MA). After labeling procedures tissue sections were post-fixed in 4% PFA in PBS and mounted with Fluoromount-G (SouthernBiotech, Birmingham, AL). For the 24 h EdU pulse-chase assay, time-pregnant females were injected intraperitoneally with 50 mg/kg body weight EdU. After 24 h, females were sacrificed, and embryo tissue processed as described above. Slides were incubated in 2N HCl at 37 °C for 20 min and rinsed 2 times in PBS with 0.2% Triton X-100. EdU detection was performed after immunostaining according to manufactures Click-it EdU Alexa 594 imaging kit protocol (Life Technologies, Carlsbad, CA). The fraction of cells that had exited the cell cycle (Q-fraction) was estimated by counting the numbers of BrdU<sup>+</sup>/Ki-67<sup>-</sup> cells basal to the SVZ

and all BrdU<sup>+</sup> cells in 200  $\mu$ m cortical segments. Q-fractions were calculated by dividing the number of BrdU<sup>+</sup>/Ki-67<sup>-</sup> cells by the total number of BrdU<sup>+</sup> cells. All imaging was carried out on a Nikon Eclipse C1 laser scanning confocal microscope with D-Eclipse C1si camera. Single- and merge-channel views were acquired with the associated Nikon EZ-C1 3.90 FreeViewer software. All quantifications of labeled cells were carried out at equivalent positions on 3 - 4 sections of every brain and averaged for every sample.

### Analysis of cell cycle kinetics

To assess cell cycle progression a dual thymidine labeling approach was used. EdU was administered through intraperitoneal injection to time pregnant females at 50 mg/kg followed by BrdU injection at 50 mg/kg 1.5 h later. 13.5 day old embryos were harvested 30 min after the BrdU injection, fixed in 4% PFA in PBS, brains frozen in 30% sucrose in PBS, and coronally cut at 12  $\mu$ m on a cryomicrotome. Slides were incubated in 2 N HCl at 37 °C for 20 min and rinsed in PBS with 0.2% Triton X-100 prior to immunostaining with  $\alpha$ -BrdU monoclonal antibodies (1:10; Life Technologies, Carlsbad, CA),  $\alpha$ -Ki67 antibodies (1:200, Abcam, Cambridge, MA), and Click-iT EdU detection following the manufactures instructions (Life Technologies, Carlsbad, CA). Subsequently, mediolateral cortical aspects were imaged as described above and labeled cells of 200  $\mu$ m wide cortical segments counted. Calculation of cell cycle parameters followed established paradigms<sup>40,41</sup>. Specifically, the duration of the experiment ( $T_I$ ) was divided by ratios of single (EdU<sup>+</sup>) over double-labeled cells (EdU<sup>+</sup>/BrdU<sup>+</sup>) to generate estimates of S phase length ( $T_S$ ). To estimate total cell cycle length ( $T_C$ ),  $T_S$  was divided by the ratio of EdU<sup>+</sup>/BrdU<sup>+</sup> cells over Ki67<sup>+</sup> cells.

### X-gal staining

Staining for  $\beta$ -galactosidase activity expressed by the *lacZ* reporter of the targeted *Wdfy3* allele was performed using X-gal as a substrate on 20  $\mu$ m coronal forebrain cryosections according to standard protocols as previously described<sup>23</sup>.

### Western blot analysis

75  $\mu$ g of protein per well were loaded into NuPAGE 12% Bis-Tris gels (Life Technologies, Carlsbad, CA). After electrophoresis and transfer to PVDF membranes Odyssey blocking buffer was applied (Li-Cor, Lincoln, NE) for 1 h at room temperature. Subsequently, membranes were incubated overnight at 4 °C with the following primary antibodies diluted in Odyssey blocking buffer including 0.1% Tween-20 and 0.05% NaN<sub>3</sub>:  $\alpha$ -P62 (1:1,000; Progen, Heidelberg, Germany),  $\alpha$ -LC3 (1:250; Novus, Littleton, CO), and  $\alpha$ -multiubiquitin (1:1,000; Enzo, Farmingdale, NY). Secondary antibodies were applied for 1 h at room temperature (Li-Cor  $\alpha$ -rabbit, 1:10,000; Li-Cor  $\alpha$ -guinea pig: 1:5,000). The PVDF membrane was then imaged on the Li-Cor Odyssey imaging system and quantified using the Li-Cor image studio software. Following the initial probing and analysis, the membrane was blotted with antibodies against  $\beta$ -actin (1:8000; Proteintech, Chicago, IL) or  $\alpha$ -tubulin (1:2,500; Sigma, St. Louis, MO) as loading controls.



### Wdfy3 co-immunoprecipitation

Whole E13.5 embryos were lysed in lysis buffer consisting of 50 mM Tris-HCl pH 7.4, 150 mM NaCl, 1mM EDTA, 1% Triton X-100, supplemented with protease inhibitor cocktail tablet (Roche, Indianapolis, IN). Lysates containing 1 mg of protein were incubated with  $\alpha$ -Wdfy3 antibody (Novus, Littleton, CO) overnight and then immunoprecipitated using Dynabeads Protein A Immunoprecipitation Kit (Life technologies, Carlsbad, CA). Subsequently, total Protein lysates, immunoprecipitated, and flow-through samples were electrophoresed in NuPAGE 3-8% Tris-Acetate gels (Invitrogen, Carlsbad, CA). Proteins were transferred to PVDF membranes and blocked in Odyssey blocking buffer (Li-Cor Biosciences, Lincoln, NE). Membranes were incubated with  $\alpha$ -Wdfy3 primary antibody (1:1000; Novus, Littleton, CO) diluted in Odyssey blocking buffer containing 0.1% Tween-20, overnight at 4°C, washed with 0.1% Tween-20 in PBS, before incubating with Li-Cor IR secondary antibody (1:5,000; Li-Cor Biosciences, Lincoln, NE) in Odyssey blocking buffer washed, and imaged on the Li-Cor Odyssey IR scanner. The 333 kDa Wdfy3 isoform, present in all samples served as loading control.

### Reverse transcription PCR

Total RNA was purified from E14.5 embryos using the RNAeasy Mini Kit (Qiagen, Germantown, MD). cDNA was generated from 5  $\mu$ g total RNA using Omniscript RT kit (Qiagen, Germantown, MD) following the manufacturers directions. PCR was conducted using the following primers: RT forward: TCCTGCCAGTGTTTAACAGG, RT reverse: ATCCGAAAATCATCCAGCAG.

### Primary neuronal cultures and P62 puncta counts

Primary neurons were obtained and cultured from E12.5 brains of WT and *disc/disc* mice following standard protocols<sup>70</sup>. In brief, following euthanasia embryos were removed from the uterus of timed pregnant females. After dissecting the brain from the skull it was placed in ice-cold PBS, the forebrain cut into 1 mm sized cubes and treated with 0.25% Trypsin-EDTA for 10min at 37 °C. Subsequently, neurobasal medium with B27 supplement was added, the tissue dissociated through repeated pipetting, and passed through a 70  $\mu$ m nylon strainer to obtain single-cell suspensions. The suspensions were added drop-wise to poly-D-Lysine coated 12 mm round coverslips (BD Biosciences, Franklin Lakes, NJ) and allowed to grow at 37 °C in a humidified CO<sub>2</sub> incubator until the cells reached approximately 50-70% confluence. For immunocytochemistry, cells were briefly fixed in 4% PFA in PBS, blocked and permeabilized (10% donkey serum, 1% triton-X100 in PBS) for 1 h, before being incubated overnight with P62 polyclonal antibody (1:125; Progen, Heidelberg, Germany). After for 1 h of secondary antibody incubation with Alexa Fluor 488 Donkey  $\alpha$ -mouse (1:1000; Molecular Probes, Eugene, OR), cells were counterstained with DAPI.

Slide-mounted coverslips were imaged with an Olympus C-1 inverted confocal microscope and Stereo Investigator digital imaging software, version 10.21.1. Eight to ten unbiased images of each cover slip were taken by imaging first the outer rim of the cover slip, and then taking each picture thereafter by rotating the disc approximately 90 degrees from the previous position. After the first four pictures were taken, the next set of four was taken closer to the center of the cover slip. In order to count P62 puncta, a standard was set up that

defined each punctum as having three adjacent pixels with a qualitatively bright net intensity. As cell size can vary considerably and number of puncta correlates with cell size, we decided to calculate the number of puncta as a ratio over visible cell surface in  $\mu\text{m}^2$ . Consequently, cells were only analyzed when nuclei were clearly visible and the cell outline was discernible within the plane of focus. P62 puncta counters were blinded to genotypes and trained on the same pictures to ensure comparability. Puncta/ $\mu\text{m}^2$  were then summed and divided by the number of cells in the corresponding genotype. Averages and standard deviations of puncta counts were calculated and the two genotypes were compared side-by-side.

## Supplementary Material

Refer to Web version on PubMed Central for supplementary material.

## Acknowledgements

This study was funded by Shriners Hospitals for Children, NICHD R21HD67855 to KSZ, the Simons Foundation with SFARI 286567 to KSZ, and the Nancy Lurie Marks Family Foundation to KSZ as well as a Shriners Hospital for Children Postdoctoral Fellowship Grant to LAO. We would particularly like to thank Drs. Matthew State and Michael Wigler for helpful advice and sharing data with us prior to publication. We would like to thank Drs. Leah Krubitzer, Stephen Noctor, and Verónica Martínez Cerdeño for support and helpful discussions during the course of this project as well as Katie Yerocostas and Danielle Brill-Lehn for technical assistance.

NIH grants to Velocigene at Regeneron Inc. (U01HG004085) and the CSD Consortium (U01HG004080) funded the generation of gene-targeted ES cells for 8,500 genes in the KOMP Program and archived and distributed by the KOMP Repository at UC Davis and CHORI (U42RR024244). For more information or to obtain KOMP products go to [www.komp.org](http://www.komp.org) or [service@komp.org](mailto:service@komp.org).

## References

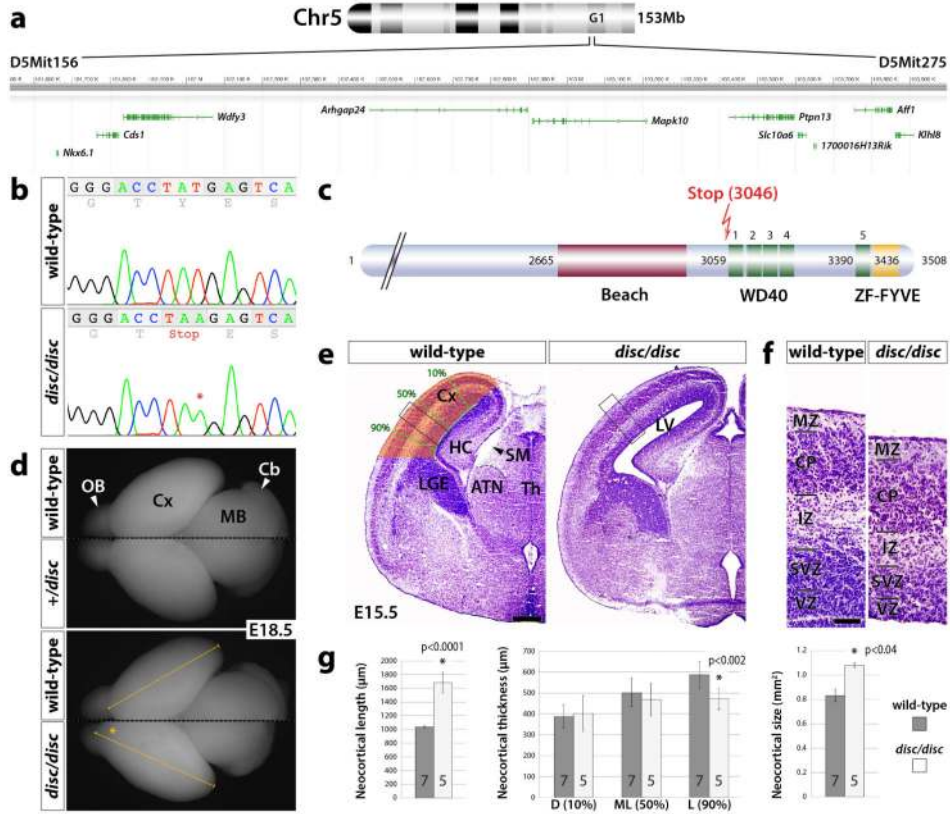
1. Elsabbagh M, et al. Global prevalence of autism and other pervasive developmental disorders. *Autism research: official journal of the International Society for Autism Research*. 2012; 5:160–179. doi:10.1002/aur.239. [PubMed: 22495912]
2. Baron-Cohen S, Belmonte MK. Autism: a window onto the development of the social and the analytic brain. *Annual review of neuroscience*. 2005; 28:109–126. doi:10.1146/annurev.neuro.27.070203.144137.
3. O’Roak BJ, et al. Exome sequencing in sporadic autism spectrum disorders identifies severe de novo mutations. *Nature genetics*. 2011; 43:585–589. doi:10.1038/ng.835. [PubMed: 21572417]
4. Sanders SJ, et al. De novo mutations revealed by whole-exome sequencing are strongly associated with autism. *Nature*. 2012; 485:237–241. doi:10.1038/nature10945. [PubMed: 22495306]
5. Neale BM, et al. Patterns and rates of exonic de novo mutations in autism spectrum disorders. *Nature*. 2012; 485:242–245. doi:10.1038/nature11011. [PubMed: 22495311]
6. O’Roak BJ, et al. Sporadic autism exomes reveal a highly interconnected protein network of de novo mutations. *Nature*. 2012; 485:246–250. doi:10.1038/nature10989. [PubMed: 22495309]
7. Iossifov I, et al. De novo gene disruptions in children on the autistic spectrum. *Neuron*. 2012; 74:285–299. doi:10.1016/j.neuron.2012.04.009. [PubMed: 22542183]
8. Bourgeron T. A synaptic trek to autism. *Current opinion in neurobiology*. 2009; 19:231–234. doi: 10.1016/j.conb.2009.06.003. [PubMed: 19545994]
9. Betancur C, Sakurai T, Buxbaum JD. The emerging role of synaptic cell-adhesion pathways in the pathogenesis of autism spectrum disorders. *Trends in neurosciences*. 2009; 32:402–412. doi: 10.1016/j.tins.2009.04.003. [PubMed: 19541375]
10. State MW, Sestan N. Neuroscience. The emerging biology of autism spectrum disorders. *Science*. 2012; 337:1301–1303. doi:10.1126/science.1224989. [PubMed: 22984058]

11. Courchesne E, et al. Mapping early brain development in autism. *Neuron*. 2007; 56:399–413. doi:S0896-6273(07)00777-5 [pii] 10.1016/j.neuron.2007.10.016. [PubMed: 17964254]
12. Amaral DG, Schumann CM, Nordahl CW. Neuroanatomy of autism. *Trends in neurosciences*. 2008; 31:137–145. doi:10.1016/j.tins.2007.12.005. [PubMed: 18258309]
13. Courchesne E, Campbell K, Solso S. Brain growth across the life span in autism: age-specific changes in anatomical pathology. *Brain research*. 2011; 1380:138–145. doi:10.1016/j.brainres.2010.09.101. [PubMed: 20920490]
14. Courchesne E, et al. Neuron number and size in prefrontal cortex of children with autism. *JAMA*. 2011; 306:2001–2010. doi:306/18/2001 [pii] 10.1001/jama.2011.1638. [PubMed: 22068992]
15. Stoner R, et al. Patches of disorganization in the neocortex of children with autism. *The New England journal of medicine*. 2014; 370:1209–1219. doi:10.1056/NEJMoa1307491. [PubMed: 24670167]
16. Bystron I, Blakemore C, Rakic P. Development of the human cerebral cortex: Boulder Committee revisited. *Nature reviews. Neuroscience*. 2008; 9:110–122. doi:10.1038/nrn2252. [PubMed: 18209730]
17. Willsey AJ, et al. Coexpression networks implicate human midfetal deep cortical projection neurons in the pathogenesis of autism. *Cell*. 2013; 155:997–1007. doi:10.1016/j.cell.2013.10.020. [PubMed: 24267886]
18. Yonan AL, et al. A genomewide screen of 345 families for autism-susceptibility loci. *American journal of human genetics*. 2003; 73:886–897. [PubMed: 13680528]
19. Jacquemont ML, et al. Array-based comparative genomic hybridisation identifies high frequency of cryptic chromosomal rearrangements in patients with syndromic autism spectrum disorders. *Journal of medical genetics*. 2006; 43:843–849. doi:10.1136/jmg.2006.043166. [PubMed: 16840569]
20. Simonsen A, et al. Alfy, a novel FYVE-domain-containing protein associated with protein granules and autophagic membranes. *J Cell Sci*. 2004; 117:4239–4251. doi:10.1242/jcs.01287 [pii]. [PubMed: 15292400]
21. Filimonenko M, et al. The selective macroautophagic degradation of aggregated proteins requires the PI3P-binding protein Alfy. *Mol Cell*. 2010; 38:265–279. doi:S1097-2765(10)00284-4 [pii] 10.1016/j.molcel.2010.04.007. [PubMed: 20417604]
22. Clausen TH, et al. p62/SQSTM1 and ALFY interact to facilitate the formation of p62 bodies/ALIS and their degradation by autophagy. *Autophagy*. 2010; 6:330–344. [PubMed: 20168092]
23. Zarbali K, et al. A focused and efficient genetic screening strategy in the mouse: identification of mutations that disrupt cortical development. *PLoS Biol*. 2004; 2:E219. doi:10.1371/journal.pbio.0020219. [PubMed: 15314648]
24. Chenn A, Walsh CA. Regulation of cerebral cortical size by control of cell cycle exit in neural precursors. *Science*. 2002; 297:365–369. doi:10.1126/science.1074192. [PubMed: 12130776]
25. Siegenthaler JA, et al. Retinoic acid from the meninges regulates cortical neuron generation. *Cell*. 2009; 139:597–609. doi:10.1016/j.cell.2009.10.004. [PubMed: 19879845]
26. Carper RA, Moses P, Tigue ZD, Courchesne E. Cerebral lobes in autism: early hyperplasia and abnormal age effects. *Neuroimage*. 2002; 16:1038–1051. doi:S1053811902910992 [pii]. [PubMed: 12202091]
27. Kates WR, et al. Neuroanatomic variation in monozygotic twin pairs discordant for the narrow phenotype for autism. *The American journal of psychiatry*. 2004; 161:539–546. [PubMed: 14992981]
28. Hazlett HC, et al. Magnetic resonance imaging and head circumference study of brain size in autism: birth through age 2 years. *Archives of general psychiatry*. 2005; 62:1366–1376. doi: 10.1001/archpsyc.62.12.1366. [PubMed: 16330725]
29. Bloss CS, Courchesne E. MRI neuroanatomy in young girls with autism: a preliminary study. *Journal of the American Academy of Child and Adolescent Psychiatry*. 2007; 46:515–523. doi: 10.1097/chi.0b013e318030e28b. [PubMed: 17420687]
30. Schumann CM, et al. Longitudinal magnetic resonance imaging study of cortical development through early childhood in autism. *The Journal of neuroscience: the official journal of the Society*

- for Neuroscience. 2010; 30:4419–4427. doi:10.1523/JNEUROSCI.5714-09.2010. [PubMed: 20335478]
31. Englund C, et al. Pax6, Tbr2, and Tbr1 are expressed sequentially by radial glia, intermediate progenitor cells, and postmitotic neurons in developing neocortex. *The Journal of neuroscience: the official journal of the Society for Neuroscience*. 2005; 25:247–251. doi:25/1/247 [pii] 10.1523/JNEUROSCI.2899-04.2005. [PubMed: 15634788]
  32. Arnold SJ, et al. The T-box transcription factor Eomes/Tbr2 regulates neurogenesis in the cortical subventricular zone. *Genes & development*. 2008; 22:2479–2484. doi:10.1101/gad.475408. [PubMed: 18794345]
  33. Sessa A, Mao CA, Hadjantonakis AK, Klein WH, Broccoli V. Tbr2 directs conversion of radial glia into basal precursors and guides neuronal amplification by indirect neurogenesis in the developing neocortex. *Neuron*. 2008; 60:56–69. doi:10.1016/j.neuron.2008.09.028. [PubMed: 18940588]
  34. Takahashi T, Nowakowski RS, Caviness VS Jr. The cell cycle of the pseudostratified ventricular epithelium of the embryonic murine cerebral wall. *The Journal of neuroscience: the official journal of the Society for Neuroscience*. 1995; 15:6046–6057. [PubMed: 7666188]
  35. Lukaszewicz A, Savatier P, Cortay V, Kennedy H, Dehay C. Contrasting effects of basic fibroblast growth factor and neurotrophin 3 on cell cycle kinetics of mouse cortical stem cells. *The Journal of neuroscience: the official journal of the Society for Neuroscience*. 2002; 22:6610–6622. doi: 20026666. [PubMed: 12151540]
  36. Calegari F, Huttner WB. An inhibition of cyclin-dependent kinases that lengthens, but does not arrest, neuroepithelial cell cycle induces premature neurogenesis. *J Cell Sci*. 2003; 116:4947–4955. doi:10.1242/jcs.00825. [PubMed: 14625388]
  37. Lange C, Huttner WB, Calegari F. Cdk4/cyclinD1 overexpression in neural stem cells shortens G1, delays neurogenesis, and promotes the generation and expansion of basal progenitors. *Cell stem cell*. 2009; 5:320–331. doi:10.1016/j.stem.2009.05.026. [PubMed: 19733543]
  38. Pilaz LJ, et al. Forced G1-phase reduction alters mode of division, neuron number, and laminar phenotype in the cerebral cortex. *Proceedings of the National Academy of Sciences of the United States of America*. 2009; 106:21924–21929. doi:10.1073/pnas.0909894106. [PubMed: 19959663]
  39. Arai Y, et al. Neural stem and progenitor cells shorten S-phase on commitment to neuron production. *Nature communications*. 2011; 2:154. doi:10.1038/ncomms1155.
  40. Martynoga B, Morrison H, Price DJ, Mason JO. Foxg1 is required for specification of ventral telencephalon and region-specific regulation of dorsal telencephalic precursor proliferation and apoptosis. *Developmental biology*. 2005; 283:113–127. doi:10.1016/j.ydbio.2005.04.005. [PubMed: 15893304]
  41. Siegenthaler JA, Tremper-Wells BA, Miller MW. Foxg1 haploinsufficiency reduces the population of cortical intermediate progenitor cells: effect of increased p21 expression. *Cerebral cortex*. 2008; 18:1865–1875. doi:10.1093/cercor/bhm209. [PubMed: 18065723]
  42. Wegiel J, et al. The neuropathology of autism: defects of neurogenesis and neuronal migration, and dysplastic changes. *Acta neuropathologica*. 2010; 119:755–770. doi:10.1007/s00401-010-0655-4. [PubMed: 20198484]
  43. Darnell JC, et al. FMRP stalls ribosomal translocation on mRNAs linked to synaptic function and autism. *Cell*. 2011; 146:247–261. doi:10.1016/j.cell.2011.06.013. [PubMed: 21784246]
  44. Kabeya Y, et al. LC3, a mammalian homologue of yeast Apg8p, is localized in autophagosome membranes after processing. *The EMBO journal*. 2000; 19:5720–5728. doi:10.1093/emboj/19.21.5720. [PubMed: 11060023]
  45. Bjorkoy G, et al. p62/SQSTM1 forms protein aggregates degraded by autophagy and has a protective effect on huntingtin-induced cell death. *The Journal of cell biology*. 2005; 171:603–614. doi:10.1083/jcb.200507002. [PubMed: 16286508]
  46. Gasquoine PG. Contributions of the insula to cognition and emotion. *Neuropsychology review*. 2014; 24:77–87. doi:10.1007/s11065-014-9246-9. [PubMed: 24442602]
  47. Gotts SJ, et al. Fractionation of social brain circuits in autism spectrum disorders. *Brain : a journal of neurology*. 2012; 135:2711–2725. doi:10.1093/brain/aww160. [PubMed: 22791801]

48. McPartland JC, Coffman M, Pelphrey KA. Recent advances in understanding the neural bases of autism spectrum disorder. *Current opinion in pediatrics*. 2011; 23:628–632. doi:10.1097/MOP.0b013e32834cb9c9. [PubMed: 21970830]
49. Pelphrey KA, Carter EJ. Brain mechanisms for social perception: lessons from autism and typical development. *Annals of the New York Academy of Sciences*. 2008; 1145:283–299. doi:10.1196/annals.1416.007. [PubMed: 19076404]
50. Redcay E. The superior temporal sulcus performs a common function for social and speech perception: implications for the emergence of autism. *Neuroscience and biobehavioral reviews*. 2008; 32:123–142. doi:10.1016/j.neubiorev.2007.06.004. [PubMed: 17706781]
51. Whiteside SP, Port JD, Abramowitz JS. A meta-analysis of functional neuroimaging in obsessive-compulsive disorder. *Psychiatry research*. 2004; 132:69–79. doi:10.1016/j.psychresns.2004.07.001. [PubMed: 15546704]
52. Rizzolatti G, Arbib MA. Language within our grasp. *Trends in neurosciences*. 1998; 21:188–194. [PubMed: 9610880]
53. Verly M, et al. Altered functional connectivity of the language network in ASD: Role of classical language areas and cerebellum. *NeuroImage. Clinical*. 2014; 4:374–382. doi:10.1016/j.nicl.2014.01.008. [PubMed: 24567909]
54. Caviness VS Jr, Nowakowski RS, Bhide PG. Neocortical neurogenesis: morphogenetic gradients and beyond. *Trends in neurosciences*. 2009; 32:443–450. doi:10.1016/j.tins.2009.05.003. [PubMed: 19635637]
55. Danielsson S, Gillberg IC, Billstedt E, Gillberg C, Olsson I. Epilepsy in young adults with autism: a prospective population-based follow-up study of 120 individuals diagnosed in childhood. *Epilepsia*. 2005; 46:918–923. doi:10.1111/j.1528-1167.2005.57504.x. [PubMed: 15946331]
56. Mouridsen SE, Rich B, Isager T. A longitudinal study of epilepsy and other central nervous system diseases in individuals with and without a history of infantile autism. *Brain & development*. 2011; 33:361–366. doi:10.1016/j.braindev.2010.07.002. [PubMed: 20655678]
57. Penagarikano O, et al. Absence of CNTNAP2 leads to epilepsy, neuronal migration abnormalities, and core autism-related deficits. *Cell*. 2011; 147:235–246. doi:10.1016/j.cell.2011.08.040. [PubMed: 21962519]
58. Konno D, et al. Neuroepithelial progenitors undergo LGN-dependent planar divisions to maintain self-renewability during mammalian neurogenesis. *Nature cell biology*. 2008; 10:93–101. doi:10.1038/ncb1673. [PubMed: 18084280]
59. Vogel C, Marcotte EM. Insights into the regulation of protein abundance from proteomic and transcriptomic analyses. *Nature reviews. Genetics*. 2012; 13:227–232. doi:10.1038/nrg3185.
60. Zalfa F, et al. The fragile X syndrome protein FMRP associates with BC1 RNA and regulates the translation of specific mRNAs at synapses. *Cell*. 2003; 112:317–327. [PubMed: 12581522]
61. Brown V, et al. Microarray identification of FMRP-associated brain mRNAs and altered mRNA translational profiles in fragile X syndrome. *Cell*. 2001; 107:477–487. [PubMed: 11719188]
62. Fimia GM, et al. Ambra1 regulates autophagy and development of the nervous system. *Nature*. 2007; 447:1121–1125. doi:nature05925 [pii] 10.1038/nature05925. [PubMed: 17589504]
63. Zhou B, Zhu YB, Lin L, Cai Q, Sheng ZH. Snapin deficiency is associated with developmental defects of the central nervous system. *Bioscience reports*. 2011; 31:151–158. doi:10.1042/BSR20100110. [PubMed: 20946101]
64. Yasin SA, et al. mTOR-dependent abnormalities in autophagy characterize human malformations of cortical development: evidence from focal cortical dysplasia and tuberous sclerosis. *Acta neuropathologica*. 2013; 126:207–218. doi:10.1007/s00401-013-1135-4. [PubMed: 23728790]
65. Skarnes WC, et al. A conditional knockout resource for the genome-wide study of mouse gene function. *Nature*. 2011; 474:337–342. doi:10.1038/nature10163. [PubMed: 21677750]
66. Pettitt SJ, et al. Agouti C57BL/6N embryonic stem cells for mouse genetic resources. *Nature methods*. 2009; 6:493–495. doi:10.1038/nmeth.1342. [PubMed: 19525957]
67. Valenzuela DM, et al. High-throughput engineering of the mouse genome coupled with high-resolution expression analysis. *Nature biotechnology*. 2003; 21:652–659. doi:10.1038/nbt822.

68. Gertsenstein M, et al. Efficient generation of germ line transmitting chimeras from C57BL/6N ES cells by aggregation with outbred host embryos. *PLoS One*. 2010; 5:e11260. doi:10.1371/journal.pone.0011260. [PubMed: 20582321]
69. Zarbalis K, Wurst W. Expression domains of murine ephrin-A5 in the pituitary and hypothalamus. *Mechanisms of development*. 2000; 93:165–168. [PubMed: 10781950]
70. Kaech S, Banker G. Culturing hippocampal neurons. *Nature protocols*. 2006; 1:2406–2415. doi: 10.1038/nprot.2006.356. [PubMed: 17406484]



**Figure 1. Positional mapping of the *disc* allele and forebrain overgrowth in homozygous mutants**  
**(a)** The diagram shows the genomic interval on chromosome 5 between markers D5Mit156 and D5Mit275 to which the *disc* mutation was mapped. All protein-encoding genes within the interval of which all exons were sequenced for this study are shown. **(b)** Sequence chromatograms of wild-type and *disc/disc* PCR amplicons show the position of the only identified coding variant (T to A, nonsense). **(c)** The schematic shows the recognized domains of mouse *Wdfy3* protein with the causative stop codon of the *disc* allele at position 3046 indicated. The first residue of each domain is given in the diagram. **(d)** Dorsal views of whole-mount brains show morphological anomalies in the homozygous *disc* mutants where indicated by the asterisk. **(e)** Nissl-stained coronal hemisections through the forebrains of E15.5 WT and homozygous *disc* mutants illustrate the malformations present in affected mutants. The green lines delineate the measurements taken for cortical length and thickness (D, dorsal; ML, mediolateral; L, lateral), while the orange area indicates how cortical size was measured. **(f)** Close-ups of the mediolateral cerebral cortex illustrate cortical thinning in *disc/disc* mutants. **(g)** Quantification of individual cortical spatial parameters confirm significant increases in length and overall size, but radial thinning in basolateral aspects. All analysis by Student's *t*-test, *n* for either genotype is indicated in the bar diagrams, which present mean and standard error of the mean (SEM). Asterisks mark significant changes with calculated *p*-values shown. ATN, anterior thalamic nuclei; Cb, cerebellum; CP, cortical plate; Cx, cerebral cortex; HC, hippocampus; IZ, intermediate zone; LGE, lateral ganglionic eminence; LV, lateral ventricles; MZ, marginal zone; SM, stria medullaris; SVZ, subventricular zone.

subventricular zone; Th, thalamus; VZ, ventricular zone. Scale bar in **e** is 500  $\mu\text{m}$  and in **f** 100  $\mu\text{m}$ .

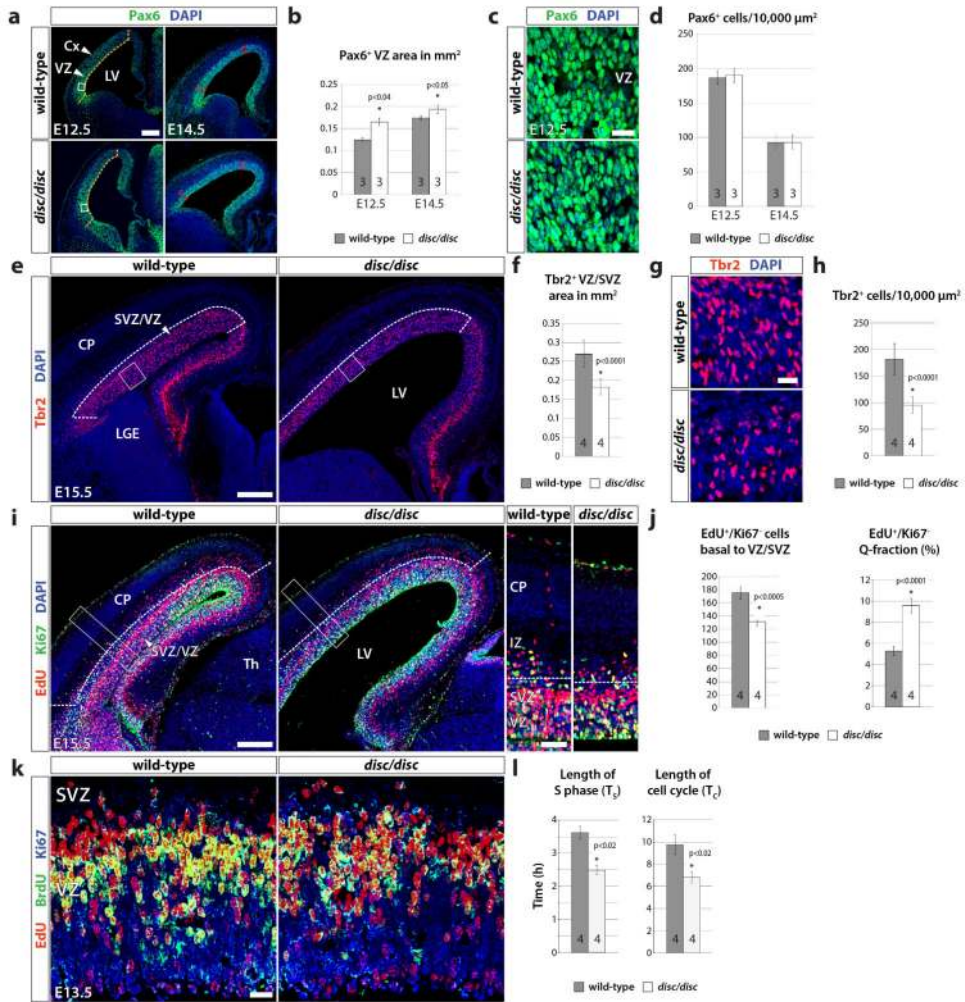
Author Manuscript

Author Manuscript

Author Manuscript

Author Manuscript





**Figure 2. Neural progenitor proliferation and neurogenesis is altered in homozygous *disc/disc* embryos**  
**(a)** Immunofluorescent analysis of Pax6 expression in the neocortical neuroepithelium at E12.5 and E14.5. Yellow dashed lines in the E12.5 brains outline the measured area of the Pax6<sup>+</sup> ventricular zone (VZ). Red lines at E14.5 highlight the lateral thinning of the VZ. **(b)** Quantification of the Pax6<sup>+</sup> VZ reveals significant increases in the *disc/disc* mutant for either stage. In contrast, density of Pax6<sup>+</sup> cells is not altered in the *disc/disc* embryos **(c, d)**. **(e - h)** Immunofluorescent area and density analysis of Tbr2<sup>+</sup> intermediate progenitors reveals significant reductions in both domains. **(i, j)** 24 h EdU pulse-chase assay reveals a reduction in total neuronal output [EdU<sup>+</sup>/Ki67<sup>-</sup> cells basal to the subventricular zone (SVZ)] per hemisphere but an increase in the Q-fraction of cells that have exited the cell cycle. **(k)** Representative coronal sections of mediolateral cortex illustrate the outcome of time-shifted dual thymidine-labeling experiment and the distribution of EdU-, BrdU-, and Ki67-labeled cells at E13.5. **(l)** Quantification of S phase length (T<sub>S</sub>) and total cell cycle length (T<sub>C</sub>) determined significant decreases in the *disc/disc* mutants relative to WT. All statistical analysis by Student's *t*-test. Bar diagrams show mean and SEM, indicate n for either genotype, and calculated p-values of significant changes (asterisks). CP, Cortical plate; Cx,

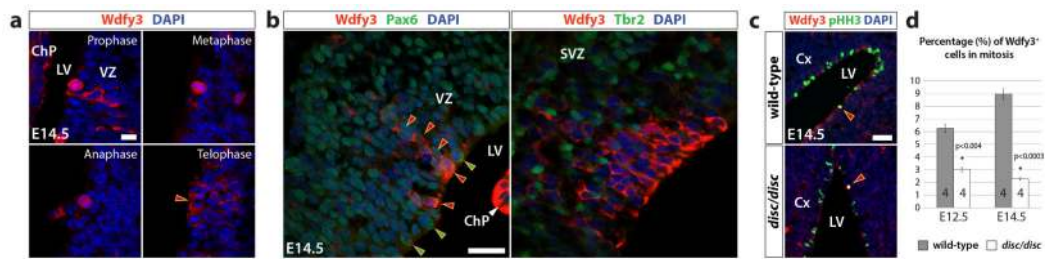
cerebral cortex; IZ, intermediate zone; LV, lateral ventricles; Th, thalamus. Scale bar in **a** is 200  $\mu\text{m}$ , in **c** 10  $\mu\text{m}$ , in **e** 100  $\mu\text{m}$ , in **g** 20  $\mu\text{m}$ , in **i** 100  $\mu\text{m}$  and 50  $\mu\text{m}$ , and in **k** 20  $\mu\text{m}$ .

Author Manuscript

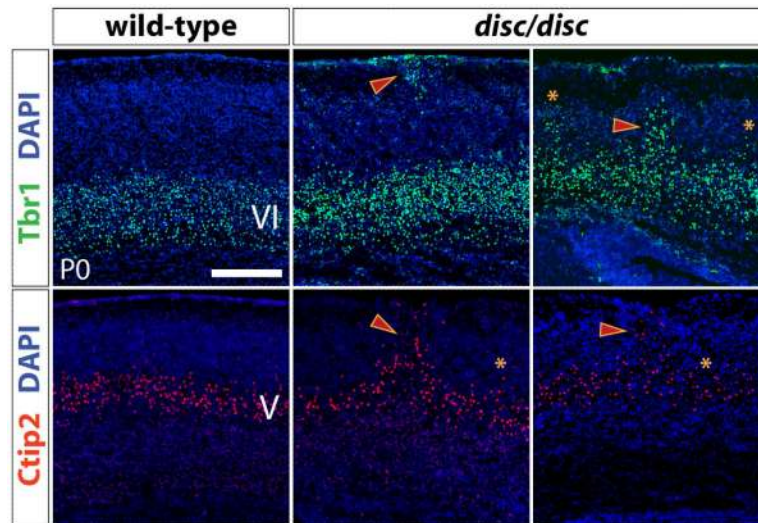
Author Manuscript

Author Manuscript

Author Manuscript

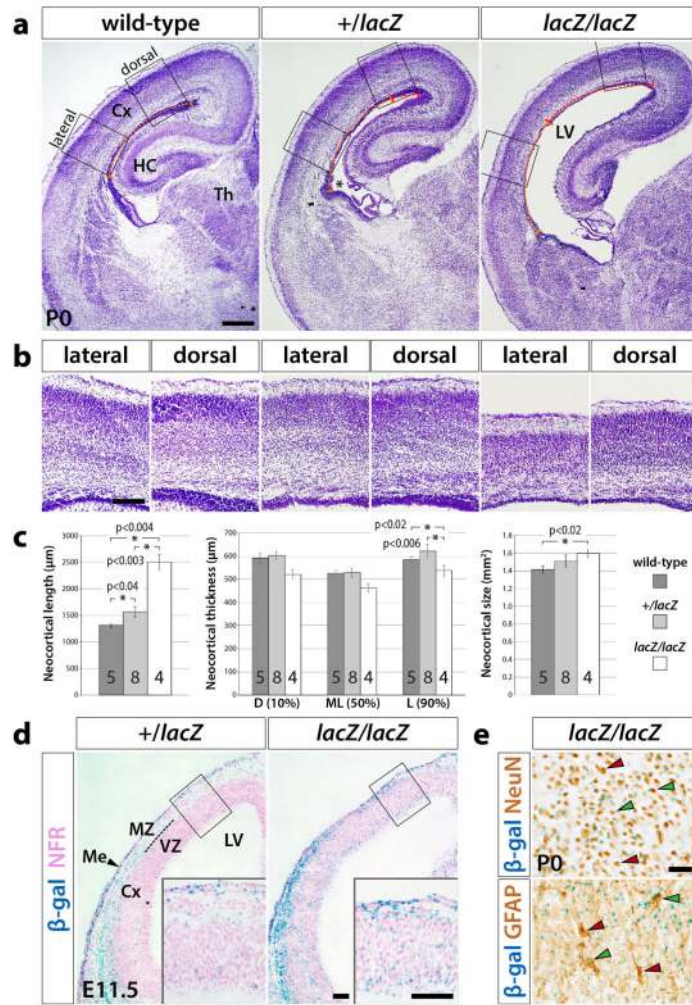


**Figure 3. Wdfy3 is upregulated in a subset of radial glia divisions during neurogenesis**  
**(a)** Immunofluorescent detection of Wdfy3 in cortical neural progenitors positioned at the ventricle of the WT cerebral cortex at E14.5 illustrates upregulation in dividing cells throughout all stages of mitosis. **(b)** Wdfy3 coexpression analysis with Pax6, a marker of radial glia, and Tbr2, a marker of intermediate progenitor. Wdfy3<sup>+</sup> cells present only a subset of dividing progenitors (red arrowheads) and are surrounded by Wdfy3<sup>-</sup> mitotic cells **(c)** Coexpression analysis of Wdfy3 with the mitosis marker pHH3 confirms that only a small share of mitotic cells is Wdfy3<sup>+</sup>. **(d)** Quantification of Wdfy3<sup>+</sup>/pHH3<sup>+</sup> cells at E12.5 and E14.5 shows significant reductions in the *disc/disc* mutants. Analysis by Student's *t*-test. Bar diagrams show mean and SEM, number of analyzed embryos (*n*) and calculated *p*-values are indicated in the diagrams. Scale bar in **a** is 10  $\mu$ m, in **b** 20  $\mu$ m, and in **c** 40  $\mu$ m.



**Figure 4. Homozygous *disc* mutants exhibit neuronal migration defects**

Immunofluorescent analysis of cortical lamination markers Tbr1 (layer VI) and Ctip2 (layer V) reveals abnormalities in layer formation of *disc/disc* mutants at P0. Arrowheads point to individual focal heterotopia of displaced cells for either marker in the mutant. Asterisks highlight smaller scale lamination anomalies. All sections shown are in the coronal plane of the somatosensory cortex. Scale bar is 200  $\mu$ m.



**Figure 5. *Wdfy3<sup>lacZ/lacZ</sup>* mice generated through gene targeting exhibit more severe neurodevelopmental defects than *Wdfy3<sup>disc/disc</sup>* mice**

(a) Nissl-stained coronal hemisections through the forebrains of WT, heterozygous, and homozygous *lacZ* newborn pups illustrate the malformations present in affected mutants. The yellow dashed line indicates the cortical length in the WT as measured from the cortico-striatal boundary to the ventricular apex. The red dashed line indicates differences in cortical length present in the *lacZ* mutants. (b) Close-ups of cortical segments of lateral and dorsal positions demonstrate cortical thinning in *lacZ* mutants. (c) Bar diagrams showing the results (mean and SEM) of statistical analysis (Student's *t*-test) for compared morphological parameters. Number (n) of analyzed pups and calculated p-values of significant changes (asterisks) are indicated in the bar diagrams. Measurements were taken as shown in Fig. 1e. (d) Analysis of  $\beta$ -galactosidase ( $\beta$ -gal) expression in *Wdfy3<sup>lacZ</sup>* mice labels *Wdfy3<sup>+</sup>* cells and their progeny and confirms at E11.5 dispersed  $\beta$ -gal<sup>+</sup> cells in the VZ, marginal zone (MZ) and meninges (Me). (e) Coronal sections of P0 dorsomedial somatosensory cortex labeled for  $\beta$ -gal expression and immunohistochemically for NeuN and GFAP confirms that *Wdfy3<sup>+</sup>* progenitors contribute to many neurons and some glia (green arrowheads) but not

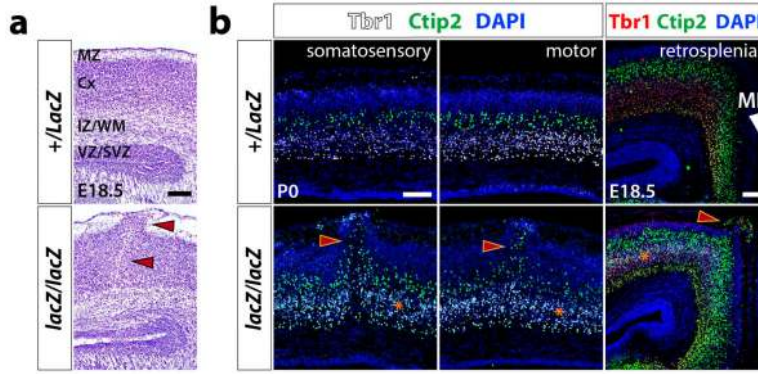
all NeuN<sup>+</sup> or GFAP<sup>+</sup> cells (red arrowheads). Scale bar in **a** is 500  $\mu\text{m}$ , in **b** 200  $\mu\text{m}$ , in **d** 50  $\mu\text{m}$ , and in **e** 20  $\mu\text{m}$ .

Author Manuscript

Author Manuscript

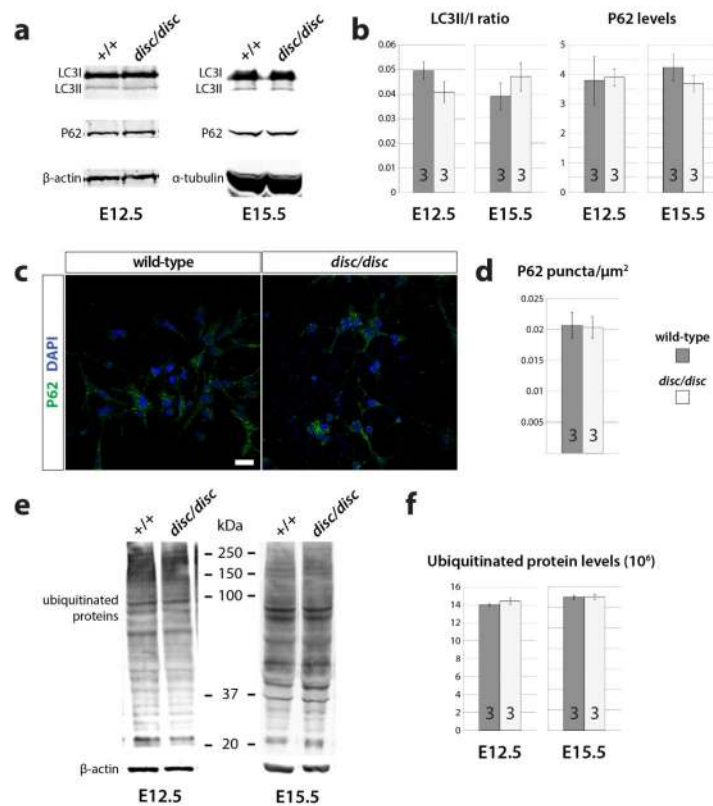
Author Manuscript

Author Manuscript



**Figure 6. *Wdfy3<sup>lacZ/lacZ</sup>* mice are characterized by widespread focal cortical dysplasias affecting most cortical areas**

(a) Nissl-stained coronal sections of the retrosplenial cortex show a focal cortical dysplasia in the homozygous *lacZ* mutant, which disrupts all cortical layers and invades the marginal zone (MZ, arrowheads). (b) Immunofluorescence of cortical lamination markers Tbr1 (layer VI) and Ctip2 (layer V) reveals focal anomalies in the somatosensory and motor cortices of the homozygous *lacZ* mutant at P0 (arrowheads). Asterisks highlight abnormal layer formation through intermingling of Ctip2<sup>+</sup> neurons with Tbr1<sup>+</sup> neurons in layer VI. Cx, cerebral cortex; IZ/WM, intermediate zone with white matter; ML, midline; MZ, marginal zone; VZ/SVZ, ventricular zone/subventricular zone. Scale bars are 100 μm.



### Figure 7. No changes in macroautophagic flux of *disc/disc* embryos

(a) Western blot analysis of LC3 and P62 on lysates of WT and *disc/disc* mutant brains at developmental stages E12.5 and E15.5 demonstrate no changes in expression levels between the genotypes. (b) Quantification of LC3II/I ratio and P62 levels confirm equal expression levels in the two genotypes. (c) Immunofluorescent analysis of P62 puncta in primary neuronal cultures from WT and *disc/disc* embryos show no significant differences between the genotypes as quantification results in (d) demonstrate. (e) Western blot analysis of ubiquitinated proteins shows no differences between the genotypes as the quantification of results in (f) demonstrates. All analysis by Student's *t*-test. Number (n) of samples of either genotype shown in the bar diagrams, which display mean and SEM. Scale bar 20  $\mu\text{m}$ .