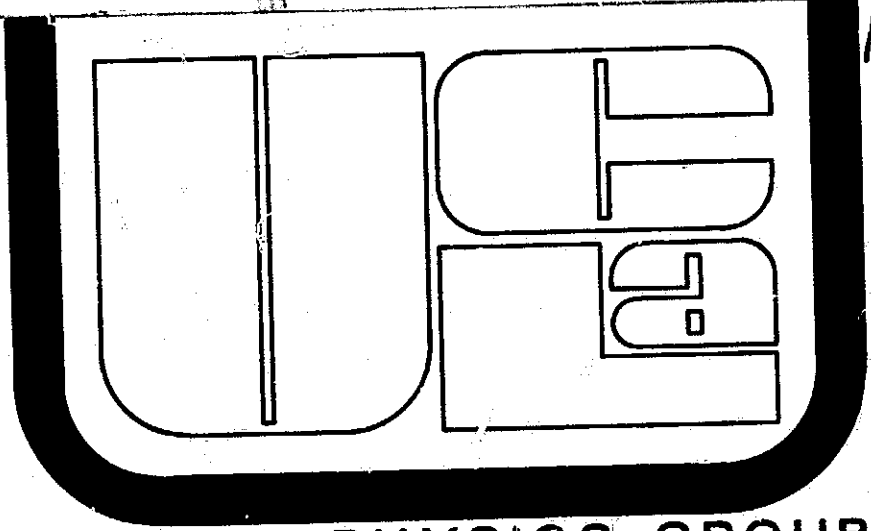


General Disclaimer

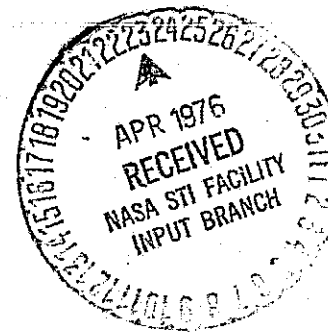
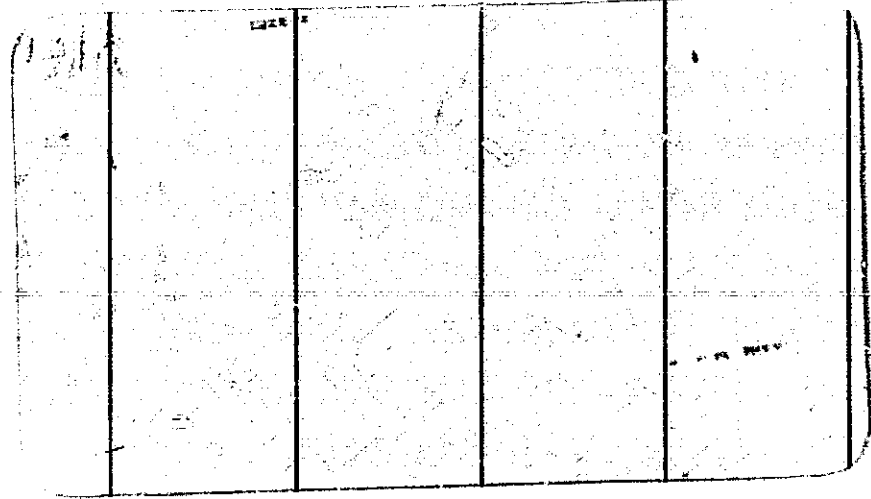
One or more of the Following Statements may affect this Document

- This document has been reproduced from the best copy furnished by the organizational source. It is being released in the interest of making available as much information as possible.
- This document may contain data, which exceeds the sheet parameters. It was furnished in this condition by the organizational source and is the best copy available.
- This document may contain tone-on-tone or color graphs, charts and/or pictures, which have been reproduced in black and white.
- This document is paginated as submitted by the original source.
- Portions of this document are not fully legible due to the historical nature of some of the material. However, it is the best reproduction available from the original submission.

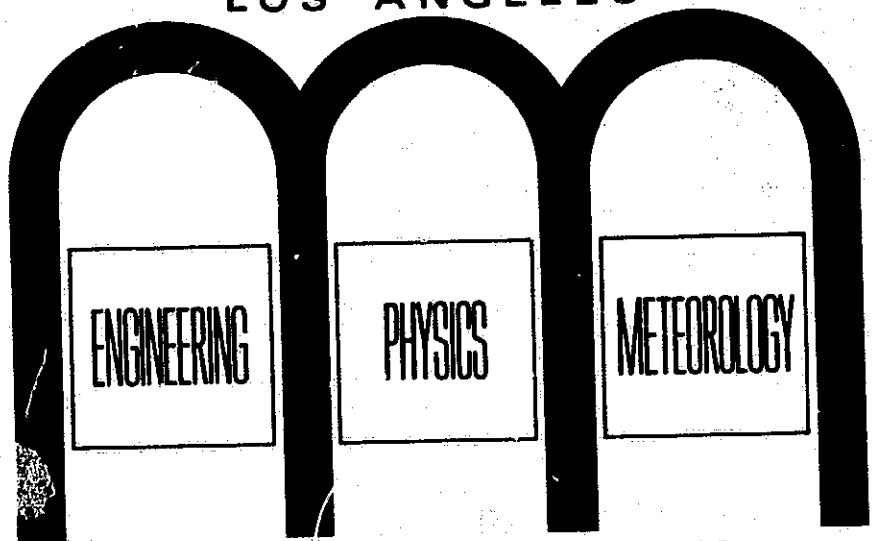
NGH 05-007-19088A



PLASMA PHYSICS GROUP



**UNIVERSITY OF CALIFORNIA
LOS ANGELES**



(NASA-CR-146802) LOSSY RADIAL DIFFUSION OF
RELATIVISTIC JOVIAN ELECTRONS (California
Univ.) 39 p HC \$4.00 CSCL 03B

N76-22130

Unclas
25158

G3/91

LOSSY RADIAL DIFFUSION
OF
RELATIVISTIC JOVIAN ELECTRONS

D. D. Barbosa¹ and F. V. Coroniti^{1,2}

PPG-259

March 1976

¹Department of Physics

²Department of Geophysics and Space Physics

University of California

Los Angeles, California 90024

LOSSY RADIAL DIFFUSION OF RELATIVISTIC JOVIAN ELECTRONS

D.D. Barbosa¹

F.V. Coroniti^{1,2}

ABSTRACT

The radial diffusion equation with synchrotron losses is solved by the Laplace transform method for near-equatorially mirroring relativistic electrons. The evolution of a power law distribution function is found and the characteristics of synchrotron burn-off are stated in terms of explicit parameters for an arbitrary diffusion coefficient of the form $D_{LL} = D_0 L^\alpha$. The peaking of the 10.4 cm volume emissivity from Jupiter at $L \approx 1.8$ provides an estimate $D_0 \approx 9 \times 10^{-11} \text{ sec}^{-1}$ in the radiation belts; this value is suggested as the appropriate modification for an equatorial field strength of 4.2 Gauss of Birmingham et al.'s (1974) result. Non-synchrotron losses are included phenomenologically and from the phase space densities reported by McIlwain and Fillius (1975) the particle lifetime is estimated as $\tau \approx 6 \times 10^8 L^{2-\alpha} \text{ sec}$. Asymptotic forms for the distribution in the strong synchrotron loss regime are provided.

¹Department of Physics

²Department of Geophysics and Space Physics

University of California, Los Angeles CA 90024.

I INTRODUCTION

Prior to the Pioneer 10 and 11 missions to Jupiter a considerable effort was made to estimate the fluxes of energetic particles in the radiation belts. The basic starting point was the two-dimensional interferometer maps of non-thermal synchrotron radiation provided by Berge (1966) and Branson (1968) and deconvolved by Beard and Luthey (1973) into equatorial emissivities. The radial diffusion equation with synchrotron losses was then solved (Birmingham et al., 1974; Coroniti, 1974; Stansberry and White, 1974) and parameters varied until a best fit with the equatorial emissivity was found. This procedure gave a determination of the radial diffusion coefficient which was in reasonable agreement with theoretical descriptions of the diffusion process based on atmospheric neutral winds driving a fluctuating dynamo electric field (Brice and McDonough, 1973; Coroniti, 1974).

The data provided by Pioneers 10 and 11 have been consistent with the model of an intense core of electrons with pitch angles near 90° confined to equatorial magnetic latitudes and undergoing inward radial diffusion. The pancaked nature of the pitch angle distribution was demonstrated by Van Allen et al. (1974), who modeled the distribution as $f \propto \sin^M \theta$ and found that for the 21, 31 MeV detectors $M = 3.5, 4$ gave good closure for the inbound/outbound Pioneer 10 data between $4 < L < 12$. The signature of inward radial diffusion is manifest in all flux diagrams, $J(L)$, especially in the vicinity of the Jovian

satellites; if measured phase space densities at constant first invariant decrease towards the planets, as in Fig. 1, an inward diffusive current must result when the particles' third invariant is violated.

The purpose of this paper is to re-examine the radial diffusion problem in light of the measurements of Pioneers 10 and 11. Previous analyses have used models for the electron distribution which differed significantly in form from those measured, and all conclusions heretofore have relied on numerical computations, with underlying physical relationships not manifest (viz., how are Birmingham et al.'s (1974) results modified by an improved measurement of the magnetic field strength?). The mounting evidence that radial diffusion is a fundamental magnetospheric transport process warrants an analytic solution with conclusions of general applicability.

We solve the steady-state radial diffusion equation with synchrotron losses for near-equatorially mirroring relativistic electrons, driven by a diffusion coefficient modeled as $D_{LL} = D_0 L^\alpha$, by the Laplace transform method previously utilized by Coroniti (1974). This procedure brings the analysis in close analogy with the problem of heat conduction in solids (Carslaw and Jaeger, 1959). Our solution is similar to that of Birmingham et al. (1974), who used an eigenfunction expansion technique with a delta function source of particles in the outer belt. We, however, concentrate on the evolution of a distribution function of particles (a power law in momenta) whose properties are now fairly well known. The solution is shown to vary as the loss-free

solution up to a point where synchrotron losses become dominant. A precise statement of this synchrotron "burn-off" regime is found, where significant reduction of the phase space density occurs due to rapid synchrotron degradation on a time scale comparable to that of radial diffusion. The Laplace transform technique has the advantage of providing an integral representation for the solution from which asymptotic forms for the distribution in the "burn-off" regime can be obtained. For application to Jupiter, the peak of the 10.4 cm volume emissivity at $L = 1.8$ (Birmingham et al., 1974) provides a lower bound to the magnitude of the diffusion coefficient (i.e., diffusion is strong enough to transport electrons into at least $L = 1.8$). The decay of the volume emissivity at smaller L values is presumed to be due to synchrotron degradation of the distribution which provides an upper bound to the diffusion coefficient.

Since McIlwain and Fillius (1975) have found significant decreases in the phase space density inside of I_0 which are non-synchrotron associated, we have included a phenomenological loss term and resolved the radial diffusion equation excluding synchrotron losses. It is argued that for a particle lifetime which varies as $\tau = \tau_0 L^{2-\alpha}$, the solution is a power law in the loss region, consistent with observation. From the slope of measured phase space densities, the magnitude of particle lifetime, τ_0 , is estimated.

Finally, if the particle lifetime persists as $\tau = \tau_0 L^{2-\alpha}$ into the synchrotron emission region ($L \sim 2$), a complete solution which includes both phenomenological and synchrotron losses is provided.

II SOLUTION OF THE RADIAL DIFFUSION EQUATION WITH SYNCHROTRON LOSSES

The basic equation governing the steady-state radial diffusion with synchrotron losses is (Schulz and Lanzerotti, 1974)

$$\frac{\partial}{\partial t} f(\vec{x}, \vec{p}, t) = L^2 \frac{\partial}{\partial L} \left[\frac{1}{L^2} D_{LL} \frac{\partial f}{\partial L} \right] - \frac{\partial}{\partial M} [\langle \dot{M} \rangle f] - \frac{\partial}{\partial J} [\langle \dot{J} \rangle f] = 0 \quad (1)$$

$f(\vec{x}, \vec{p}, t)$ is the phase space distribution function averaged over phase angles conjugate to M , J , ϕ and $n(\vec{x}, t) = \int d\vec{p} f$ is the local density. $M = \frac{p^2 \sin^2 \theta}{2mB(L)}$ is the first adiabatic invariant, θ is the equatorial pitch-angle, $J = \oint p_{\parallel} ds$ is the second invariant, and $L = r/R_J$ is the magnetic shell parameter for a dipole field $B(L) = B_0 L^{-3}$. The quantities $\langle \dot{M} \rangle$ and $\langle \dot{J} \rangle$ are the bounce-averaged rates of change of M and J due to synchrotron energy loss.

Throughout this paper we make the assumptions that most of the electrons mirror near the equator ($\theta \sim \pi/2$) and have ultrarelativistic energies $\gamma = (1 - v^2/c^2)^{-1/2} \gg 1$. For this case, the synchrotron degradation of the second invariant is small since $\langle \dot{J} \rangle \propto \cos^4 \theta$, and $\partial/\partial J \langle \dot{J} \rangle \propto \cos^2 \theta$ (Coroniti, 1974); hence the last term in (1) will be dropped compared to $\langle \dot{M} \rangle$, which is finite at $\theta = \pi/2$.

We approximate M as $\frac{mc^2}{2} \frac{\gamma^2}{B(L)}$.

The rate at which M changes due to synchrotron emission is, to lowest order,

$$\langle \dot{M} \rangle = -\frac{4}{3} \frac{e^4 B^2(L)}{m^3 c^5} \gamma M = -\frac{4\sqrt{2}}{3} \frac{e^4 B_0^{5/2}}{m^{7/2} c^6} \frac{1}{L^{15/2}} M^{3/2} \quad (2)$$

If $D_{LL} = D_0 L^\alpha$, equation (1) is of the form

$$\frac{\partial f}{\partial t} = L^2 \left[\frac{\partial}{\partial L} D_0 L^{\alpha-2} \frac{\partial f}{\partial L} \right] + \frac{\partial}{\partial M} \left[\frac{D_s}{L^{15/2}} M^{3/2} f \right] \quad (3)$$

a) Initial Value Problem

The consequences of the synchrotron term can be understood if we drop the diffusion term in equation (3) and solve an initial value problem with $f(t=0) = f_0(M) = AM^{-\frac{1}{2}(N+2)} \theta(M_0 - M)$. $\theta(x)$ is the Heaviside step function which introduces an arbitrary cutoff, M_0 , at large values of the first invariant. N is the spectral index of the distribution and A is a normalization. Two cases are of interest for comparison with the diffusion problem developed in the next section: if $N = 2$ the solution is

$$f(M, N = 2, t) = \frac{A}{M^2} \left[1 - \frac{\sqrt{MD_s}}{2L^{15/2}} t \right] \theta(\bar{M}_0 - M) \quad (4)$$

where

$$\bar{M}_0 = \frac{M_0}{\left(1 + \frac{\sqrt{M_0 D_s}}{2L^{15/2}} t\right)^2} \quad (5)$$

If $t \gg t_s = \frac{2L^{15/2}}{\sqrt{M_0 D_s}}$ (the synchrotron energy half-life of the cutoff) a significant burn-off of particles occurs at \bar{M}_0 even though $M \ll M_0$. The second term in equation (4) is a synchrotron correction to the $N = 2$ spectrum. For $N = 1$ the solution is

$$f(M, N = 1, t) = \frac{A}{M^{3/2}} \theta(\bar{M}_0 - M) \quad (6)$$

with \bar{M}_0 the same as (5). The synchrotron correction is absent since $f \propto M^{-3/2}$ is a "stationary" solution.

b) Diffusive Boundary Problem

The diffusive boundary value problem has much the same effect. If the diffusion process cannot transport particles in faster than their synchrotron degradation, burn-off should occur. If we estimate characteristic times from equation (3)

$$\tau_{\text{SYNC}} \sim \frac{L^{15/2}}{D_s \sqrt{M}}, \quad \tau_{\text{R.D.}} \sim \frac{1}{D_0 L^{\alpha-2}}$$

then

$$\frac{\tau_{\text{R.D.}}}{\tau_{\text{SYNC}}} \sim \frac{D_s \sqrt{M}}{D_0 L^{\alpha+11/2}} = \frac{\sqrt{M}}{D L^{\alpha+11/2}} = 1 \quad (7)$$

where

$$D \equiv \frac{3}{4^{1/2}} \frac{D_0 m^{7/2} c^6}{e^4 B_0^{5/2}} \quad (8)$$

roughly marks the transition from the synchrotron burn-off regime to the pure radial diffusion regime (weak synchrotron losses).

In the steady-state equation (3) becomes

$$DL^{19/2} \frac{\partial}{\partial L} \left[L^{\alpha-2} \frac{\partial f}{\partial L} \right] + \frac{\partial}{\partial M} \left[M^{3/2} f \right] = 0 \quad (9)$$

Letting $G = M^{3/2} f$, $y = \frac{1}{\sqrt{M}}$, then if $G(s) \equiv \int_0^\infty e^{-sy} G(y) dy$,

$$L^2 \frac{\partial^2 G}{\partial L^2} + (\alpha - 2) L \frac{\partial G}{\partial L} - \frac{s}{2DL^{\alpha+11/2}} G = 0 \quad (10)$$

where we require

$$\lim_{y \rightarrow 0} e^{-sy} G(L, y) = \lim_{M \rightarrow \infty} e^{-\frac{s}{\sqrt{M}}} M^{3/2} f(L, M) = 0 \quad (11)$$

The solution of equation (10) subject to the boundary conditions $G(L = L_i) = 0$ at the surface, $L_i = 1$, and $G(L = L_o) = G_o(y)$ is

$$f(L, M) = \left(\frac{L}{L_o} \right)^{\frac{1}{2}(3-\alpha)} \frac{1}{M^{3/2}} \frac{1}{2\pi i} \int_{-i\infty+\epsilon}^{i\infty+\epsilon} ds \cdot e^{sy} G_o(y) \left[\frac{I_{\nu}(xr) I_{-\nu}(xb) - I_{\nu}(xb) I_{-\nu}(xr)}{I_{\nu}(xa) I_{-\nu}(xb) - I_{\nu}(xb) I_{-\nu}(xa)} \right] \quad (12)$$

where the contour lies to the right of all poles of the integrand, $I_{\pm\nu}(xr)$ is the modified Bessel function and

$$x = \frac{1}{L^{\alpha+11/2}} \sqrt{\frac{2s}{D}} \quad \nu = \frac{3-\alpha}{\alpha+11/2}$$

$$r = L^{-\frac{1}{2}(\alpha+11/2)} \quad b = L_i^{-\frac{1}{2}(\alpha+11/2)} \quad a = L_o^{-\frac{1}{2}(\alpha+11/2)} \quad (13)$$

At L_0 we assume that the distribution can be represented by a power law $f_0 = \frac{A}{M^{\frac{1}{2}}(N+2)}$. Equation (12) then becomes

$$f(L, M) = A \left(\frac{L}{L_0} \right)^{\frac{1}{2}(3-\alpha)} \frac{1}{M^{\frac{1}{2}}(N+2)} \frac{\Gamma(N)}{2\pi i} \int_{-i\infty+\epsilon}^{i\infty+\epsilon} \frac{dt e^t}{t^N} \cdot \left[\frac{I_{\nu}(\lambda r) I_{-\nu}(\lambda b) - I_{\nu}(\lambda b) I_{-\nu}(\lambda r)}{I_{\nu}(\lambda a) I_{-\nu}(\lambda b) - I_{\nu}(\lambda b) I_{-\nu}(\lambda a)} \right] \quad (14)$$

with

$$\lambda^2 = \frac{2\sqrt{Mt}}{(\alpha + 11/2)^2 D} \quad \nu = \frac{3-\alpha}{\alpha + 11/2} \quad (15)$$

If ν is an integer the bracket is replaced by its limiting value.

While $I_{\pm\nu}(\lambda r)$ has a branch point at the origin, the combination in the denominator of the bracket is a single-valued even function of λ ; as a function of t , all of the poles of the bracket lie on the negative real axis (Gray and Mathews, 1922). If N is an integer the contour can be closed by a semi-circle to the left and the integral is evaluated by the theory of residues in Appendix A.

The case of $N = 1$ is relevant for synchrotron-emitting particles at Jupiter since the time-averaged power spectrum of non-thermal emissions is flat between $200 \text{ MHz} < f < 3000 \text{ MHz}$ (Carr and Gulkis, 1969); if the E-M spectrum varies as $f^{-\delta}$, δ is related to the spectral index by $\delta = \frac{1}{2}(N-1)$ (see equation (36)). Figure 1 is a plot of phase-space densities reported by McIlwain and Fillius (1975) from Pioneer 10 measurements of energetic electrons. For $L > 10$ the particles have a spectrum

which has $N \sim 3.5$. Inside Europa and Io, the spectrum of low energy particles ($\gamma \sim 2 - 16$) hardens considerably and at $L = 3$ has settled into a profile of $N \sim 1$; the corresponding range of M is 6.4 - 360 MeV/G.

From Appendix A we have for $N = 2$

$$f(L, M, N = 2) = A \left(\frac{L}{L_0} \right)^{\frac{1}{2}(3-\alpha)} \frac{1}{M^2} \left\{ A_0 + \frac{1-2}{4\lambda^2} A_1 \right. \\ \left. - \frac{1}{\lambda^2} \sum_{n=1}^{\infty} \frac{1}{Y_{v,n}} e^{-\frac{\gamma_{v,n}^2}{\lambda^2}} \right. \\ \left. \cdot \frac{\pi J_v(\gamma_{v,n}^a) J_v(\gamma_{v,n}^b)}{J_v^2(\gamma_{v,n}^b) - J_v^2(\gamma_{v,n}^a)} \right. \\ \left. \cdot [J_v(\gamma_{v,n}^b) Y_v(\gamma_{v,n}^r) - (r \leftrightarrow b)] \right\} \quad (16)$$

and for $N = 1$, neglecting edge effects at M_0 ($M \ll M_0$)

$$f(L, M, N = 1) = A \left(\frac{L}{L_0} \right)^{\frac{1}{2}(3-\alpha)} \frac{1}{M^{3/2}} \left\{ A_0 + \sum_{n=1}^{\infty} e^{-\frac{\gamma_{v,n}^2}{\lambda^2}} \right. \\ \left. \cdot \frac{\pi J_v(\gamma_{v,n}^a) J_v(\gamma_{v,n}^b)}{J_v^2(\gamma_{v,n}^b) - J_v^2(\gamma_{v,n}^a)} \right. \\ \left. \cdot [J_v(\gamma_{v,n}^b) Y_v(\gamma_{v,n}^r) - (r \leftrightarrow b)] \right\} \quad (17)$$

where $\frac{1}{\lambda^2} = \frac{2/\bar{M}}{(\alpha + 1/2)^2 D}$ and A_0, A_1 are functions of L defined in Appendix A; $Y_{v,n}$ are defined such that

$J_\nu(\gamma_{\nu,n}^b) Y_\nu(\gamma_{\nu,n}^a) - J_\nu(\gamma_{\nu,n}^a) Y_\nu(\gamma_{\nu,n}^b) = 0$. These solutions can be compared with Birmingham's (1974) equation (11) for the invariant-space distribution function. The similarity with the initial value problem is clear. When $\bar{\lambda}^2 \rightarrow 0$ only the A_0 term survives to reproduce the loss-free solution to equation (9). The term $\frac{1}{4}\bar{\lambda}^2 A_1$ is the synchrotron correction to the $N = 2$ spectrum. The series of Bessel functions contributes when $\bar{\lambda}^2 \rightarrow \infty$ and strong synchrotron degradation occurs. In fact, if $\frac{1}{\bar{\lambda}^2} \equiv 0$, the series in equation (17) is a representation of $-A_0$ of the type described by Erdélyi et al. (1953). Weak synchrotron losses can be expected when the argument of the exponential is not small and $\bar{\lambda}^2 \sim \gamma_{\nu,1}^2$. A few of the values of $\gamma_{\nu,n}$ have been tabulated by Jahnke and Emde (1945). In particular, if $\nu = 1/2$ and $b = 1$, $\gamma_{\frac{1}{2},n} = \frac{n\pi}{1-a} = n\pi$ for $a = L_0^{-\frac{1}{2}(\alpha+11/2)} \ll 1$. For other values of ν , $\gamma_{\nu,1}$ is close to π . We conclude that provided

$$\bar{\lambda}^2 = \frac{2\sqrt{M}}{(\alpha + 11/2)^2 D} \lesssim \frac{1}{2}\pi^2 \quad (18)$$

weak synchrotron losses prevail throughout the diffusion to the surface.

The more interesting case involves particles which experience weak losses at L_0 but undergo strong degradation at L . Inspection of the bracket of equation (14) reveals that the criterion for weak (strong) losses at L depends on whether $I_{\pm\nu}(\lambda r)$ is in the small argument (asymptotic form) for most of that part of the integration up to where the exponential cuts off at $t = -1$.

In this case an asymptotic expression for the distribution function

in the burn-off regime can be obtained by expanding the relevant Bessel functions in equation (14) and then inverting the transform. This procedure is carried out in Appendix B. Thus, the appropriate modification of (18) is $\bar{\lambda}^2 r^2 \lesssim \frac{1}{2} \pi^2$ and provided that

$$\frac{2\sqrt{M}}{(\alpha + 11/2)^2 D} \frac{1}{L^{\alpha+11/2}} \leq \frac{1}{2} \pi^2 \quad (19)$$

weak synchrotron losses will prevail from L to L_0 . This result is similar to the estimate given by equation (7) but differs significantly by the factor of $(\alpha + 11/2)^{-2}$. We have arbitrarily chosen the transition criterion at $\bar{\lambda}^2 r^2 \leq \frac{1}{2} \pi^2$, but inspection of the argument of the exponential in equations (B.6) or (B.8) suggests an alternative $\bar{\lambda}^2 r^2 \leq 4$ which modifies the result only slightly. Although the solution (A.14) and in particular equations (16) and (17) are valid for integer values of N , the burn-off criterion (19) and the asymptotic forms are valid generally.

c) The Diffusion Coefficient

The synchrotron emissions (which peak at $L \approx 1.8$ for 10.4 cm radiation) span the frequencies $\Delta f = 200 - 3000+$ MHz. If the electrons emit predominantly at the characteristic frequency $f_c = \frac{3}{2} f_0 \gamma^2 = \frac{3}{4\pi} \frac{eB(L)}{mc} \gamma^2$, then for a surface magnetic field strength of 4.2 Gauss, $\Delta \gamma = 8 - 32$ at $L = 1.8$, corresponding to $\Delta M = 22 - 352$ MeV/G. Equation (19) can be expressed as

$$D_0 \geq \frac{(3.1 \times 10^{-9}) B_0^{5/2} \sqrt{M(\text{MeV/G})}}{(\alpha + 11/2)^2 L^{\alpha + 11/2}} \\ = \frac{7.7 \times 10^{-10} B_0^{3/2} \sqrt{f_c(\text{MHz})}}{(\alpha + 11/2)^2 L^{\alpha + 5/2}} (\text{sec}^{-1}) \quad (20)$$

The Pioneer 10 data (McIlwain and Fillius, 1975) indicate that for $\Delta M = 6.4 - 360 \text{ MeV/G}$ the spectral index $N \approx 1$ at $L = 3$. The flat synchrotron spectrum is consistent with $N = 1$ throughout the strong synchrotron radiation region, which extends to at least $L = 1.8$. The flat synchrotron spectrum suggests that the radiating electrons diffuse to $L = 1.8$ without a significant synchrotron degradation of the $N = 1$ spectrum, we use (20) with the upper value of $M = 352 \text{ MeV/G}$ ($f_c = 3000 \text{ MHz}$) to arrive at an estimate of the minimum diffusion coefficient D_0 , which is consistent with the preservation of the $N = 1$ spectrum. We find that the minimum value $D_0 \text{ min} \times 10^{10} = 0.88, 2.0, 4.6, 11 \text{ sec}^{-1}$ for $\alpha = 4, 3, 2, 1$. Note that for the 3000 MHz emitting particles to diffuse to the surface with weak losses requires $D_0 \times 10^{10} \geq 40, 50, 64, 86$.

III NON SYNCHROTRON LOSSES

a) General Scaling Laws

For weak synchrotron losses we need retain only the A_0 term in the distribution function, and since $A_0(L, v) = A_0(L, -v)$

$$f(L) \sim \begin{cases} L^{\frac{1}{2}(3-\alpha) + \frac{1}{2}|3-\alpha|} & \alpha \neq 3 \\ \ln L & \alpha = 3 \end{cases} \quad (21)$$

McIlwain and Fillius (1975) have pointed out that Fig. 1 shows $f(L) \sim L^q$ where $q \approx 4$, which is possible in the absence of any losses only if α is negative. Since serious synchrotron losses yield exponential dependences on M and L , and since the weak synchrotron loss criterion is satisfied by these particles within the limits of experimental measurements of the diffusion coefficient, another loss mechanism must be active. If we drop the synchrotron term in equation (1) and replace it by a phenomenological loss term, then

$$\frac{\partial f}{\partial t} = L^2 \frac{\partial}{\partial L} \left[\frac{1}{L^2} D_{LL} \frac{\partial f}{\partial L} \right] - \frac{1}{\tau(L, M)} f = 0 \quad (22)$$

where $\tau(L, M)$ is the particle lifetime.

The inclusion of energy dependences is straightforward here; letting $D_{LL} = D_0 L^{\alpha \bar{M}^m/2}$ and $\tau(L) = \tau_0 L^{\beta \bar{M}^{\delta/2}}$ where \bar{M} is the first invariant arbitrarily normalized,

$$L^2 \frac{\partial^2 f}{\partial L^2} + (\alpha - 2)L \frac{\partial f}{\partial L} - \frac{M^{-\frac{1}{2}(m+\delta)}}{D_0 \tau_0} L^{2-\alpha-\beta} f(L; M) = 0 \quad (23)$$

Using the boundary conditions $f(L = L_i) = 0$ and $f(L = L_o) = f_o(M)$ the solution of (23) is

$$f(L, M) = \left(\frac{L}{L_o}\right)^{\frac{1}{2}(3-\alpha)} f_o \left[\frac{I_\nu(xr) I_{-\nu}(xb) - I_{-\nu}(xr) I_\nu(xb)}{I_\nu(xa) I_{-\nu}(xb) - I_{-\nu}(xa) I_\nu(xb)} \right] \quad (24)$$

and

$$\nu = \frac{3-\alpha}{\alpha+\beta-2} \quad x = \frac{2}{|\alpha+\beta-2|} \sqrt{\frac{1}{D_0 \tau_0} M^{-\frac{1}{2}(m+\delta)}} \\ r = L^{-\frac{1}{2}(\alpha+\beta-2)} \quad b = L_i^{-\frac{1}{2}(\alpha+\beta-2)} \quad a = L_o^{-\frac{1}{2}(\alpha+\beta-2)} \quad (25)$$

For weak losses, the solution (24) behaves like equation (21).

For strong losses, the solution behaves asymptotically as

$$f(L, M) \sim \left(\frac{L}{L_o}\right)^{\frac{1}{2}(3-\alpha)} f_o \sqrt{\frac{a}{r}} \frac{\sinh[x(b-r)]}{\sinh[x(b-a)]} \quad (26)$$

Arbitrary values of β yield exponential dependences on L . But, for the special case $\beta = 2 - \alpha$ it can be shown that (24) reduces to

$$f(L, M) \xrightarrow{\beta \rightarrow 2-\alpha} \left(\frac{L}{L_o}\right)^{\frac{1}{2}(3-\alpha)} f_o \left(\frac{L}{L_o}\right)^{\frac{1}{2}(3-\alpha)C} \\ \cdot \frac{\left[1 - (L_i/L)^{(3-\alpha)C}\right]}{\left[1 - (L_i/L_o)^{(3-\alpha)C}\right]} \quad (27)$$

where

$$c = \left[1 + \frac{4}{(3-\alpha)^2 D_0 \tau_0} \bar{M}^{-\frac{1}{2}(m+\delta)} \right]^{\frac{1}{2}} \quad (28)$$

then outside of the surface absorption region $\left[(L_1/L)^{|3-\alpha|c} \ll 1 \right]$, the solution scales like

$$f(L, M) = \left(\frac{L}{L_0} \right)^q f_0(M) \quad (29)$$

where

$$q = \frac{1}{2}(3-\alpha) + \frac{1}{2}|3-\alpha|c \quad (30)$$

Solving for the magnitude of the particle lifetime

$$\frac{1}{D_0 \tau_0} \bar{M}^{-\frac{1}{2}(m+\delta)} = q(q+\alpha-3) \quad (31)$$

which is, of course, what will result if we assume a power law for f a priori and insert it into (22). If $m+\delta = 0$ and if we choose $\alpha = 4, 3, 2$, then estimating the slope from Fig. 1 as $q = 4$, we have as an estimate for $D_0 \tau_0 = \frac{1}{20}, \frac{1}{16}, \frac{1}{12}$.

The fact that the observed distribution behaves like a power law in the loss region, $L < 10$, supports the argument that $\tau(L) \sim L^{2-\alpha}$. This situation, as stated above, is only the requirement that anomalous losses just balance the diffusion source and that f behave as a power law in L .

If the corotation drift dominates over the curvature-gradient drift at Jupiter for these particles, we expect $m = 0$ (Coroniti, 1974). Figure 1 demonstrates a weak dependence on \bar{M} inside

the loss region (i.e., $q \neq q(\bar{M})$) which supports the approximation $\delta = 0$.

Although the loss mechanism has not been confirmed, loss cone precipitation is the leading candidate. For a dipole field the minimum precipitation lifetime on strong pitch-angle diffusion is (Coroniti, 1974) $\tau_{\min} = \frac{2L^4 R_J \gamma}{c(\gamma^2 - 1)^{3/2}}$ which is independent of energy for relativistic electrons. For the size of the diffusion coefficient suggested in section II ($D_\circ \sim 10^{-10} \text{sec}^{-1}$), we find that for $D_\circ \tau_\circ = \frac{1}{20}$, $\tau \gg \tau_{\min}$ and that if pitch-angle diffusion is the loss mechanism, the weak pitch-angle diffusion regime prevails.

We note that if the particle lifetime persists as $\tau = \tau_\circ L^{2-\alpha}$ into the synchrotron emission region and that no other, different mechanism takes over at small $L < 2$ values, then if $m = \delta = 0$, synchrotron losses can be included and all of the formulas of section II still hold with the only substitution

$v \rightarrow \frac{3+\alpha}{\alpha+11/2} \left[1 + \frac{4}{(3-\alpha)^2 D_\circ \tau_\circ} \right]^{1/2}$. The conclusions reached from equation (19) are, of course, still valid.

b) Volume Emissivity

On the assumption that weak synchrotron losses persist up to the surface of Jupiter (i.e., $D_\circ > 40 \times 10^{-10} \text{sec}^{-1}$) and that the lifetime $\tau = \tau_\circ L^{2-\alpha}$ still applies for $L < 3$, we ask how does the equatorial emissivity vary with L . If the decay in the emissivity for $L < 1.5$ is due not to 1) synchrotron degradation or 2) a different, very intense loss mechanism

which commences just inside of $L < 2$, then the decay is due to surface absorption. If $m + \delta = 0$ and $c = \left[1 + \frac{4}{(3 - \alpha)^2 D_0 \tau_0} \right]^{\frac{1}{2}}$, equation (27) becomes

$$\begin{aligned} f(L, \vec{p}) &= L^{\frac{1}{2}(3-\alpha) + \frac{1}{2}|3-\alpha|c - \frac{3}{2}(N+2)} \left[1 - (1/L)^{|3-\alpha|c} \right] \frac{1}{p^{N+2}} \\ &= g(L) \frac{1}{p^{N+2}} \end{aligned} \quad (32)$$

The monochromatic emissivity is defined as

$$\eta_f(\vec{n}) = \int d\vec{p} P_f(\vec{p}, \vec{n}) f(\vec{x}, \vec{p}) \quad (33)$$

where $P_f(\vec{p}, \vec{n})$ is the power radiated at the frequency f in the direction \vec{n} by an electron with momentum \vec{p} . For simplicity assume the electrons radiate at only the characteristic frequency

$$P_f(\vec{p}, \vec{n}) \approx \gamma^2 B^2(L) \delta(f - f_c) \quad (34)$$

For relativistic particles where $\gamma \approx \frac{p}{mc}$, equation (33) scales

as

$$\eta_f(\vec{n}) \sim g(L) \frac{1}{L^6} \int dp \frac{\delta(f - f_c)}{p^{N-2}} \sim g(L) L^{-\frac{3}{2}(N+1)} \int \frac{du \delta(f - u)}{u^{\frac{1}{2}(N-1)}} \quad (35)$$

and we have

$$\eta_f(\vec{n}) \sim L^{\frac{1}{2}(3-\alpha) + \frac{1}{2}|3-\alpha|c - 3(N+3/2)} \left[1 - (1/L)^{|3-\alpha|c} \right] f^{-\frac{1}{2}(N-1)} \quad (36)$$

The emissivity maximizes due to surface absorption (no synchrotron losses) at $L = L'$ where

$$L' = \left[1 + \frac{13 - \alpha 1C}{3(N + 3/2) - \frac{1}{2}(3 - \alpha) - \frac{1}{2}13 - \alpha 1C} \right]^{\frac{1}{13 - \alpha 1C}}$$

$$= \left[1 + \frac{2q + \alpha - 3}{2(N + 3/2) - q} \right]^{\frac{2q + \alpha - 3}{2q + \alpha - 3}} \quad (37)$$

IV DISCUSSION

The electrons measured by Pioneers 10 and 11 were in the weak synchrotron loss regime and equation (32) is relevant for them. The uni-directional flux $\bar{j}(\vec{x}, \vec{p}) = p^2 f(\vec{x}, \vec{p})$ and the omni-directional integral flux is then approximately

$$J(\gamma > \Gamma) \propto L^{\frac{1}{2}(3-\alpha) + \frac{1}{2}(3-\alpha)C - \frac{3}{2}(N+2)} \quad (38)$$

For $L > 8$, where losses are not apparent at high energies, if $\alpha \geq 4$, $J(\gamma > \Gamma) \propto L^{-3/2(N+2)}$. In this region $N \approx 3.5$ for electrons of energies $E > 35$ MeV and $J(\gamma > 70) = L^{-8.2}$, consistent with observation.

If we suppose that the diffusion coefficient is large enough to transport the significant synchrotron emitting electrons to the surface, and also that the characteristics of the anomalous loss mechanism do not suddenly change for $L < 2$, then the electron flux should drop because of absorption at the surface and the emissivity should peak at L' given by (37). For reasonable values of parameters L' is insensitive to q and α : if we choose $\alpha = 4$ and $N = 1$, $L' = 1.13 - 1.17$ for $q = 0.5$. If the resolution of the volume emissivity is high enough to preclude these values, the particles must undergo serious synchrotron losses before reaching the surface. This conclusion puts an upper bound on the magnitude of the diffusion coefficient. With the assumption that the 3000 MHz emitting particles diffuse to $L = 1.8$ without serious synchrotron degradation, we obtained an estimate for the minimum diffusion coefficient of

0.88, 2.0, 4.6, $11 < D_{\circ \text{ min}} \times 10^{10}$ for $\alpha = 4, 3, 2, 1$. Since the 10.4 cm emissivity decreases significantly by $L = 1.4$, we can estimate an upper limit on D_{\circ} by assuming that the synchrotron loss criterion (20) is not satisfied at $L = 1.4$. Substituting $f_{\circ} = 3000$ MHz and $L = 1.4$ in (20), the range of D_{\circ} values is bounded by

$$0.88, 2.0, 4.6, 11 < D_{\circ} \times 10^{10} < 4.5, 7.9, 14, 26 \text{ (sec}^{-1}\text{)} \quad (30)$$

for $\alpha = 4, 3, 2, 1$. The criteria of minimum synchrotron degradation at $L = 1.8$ and serious losses at $L = 1.4$ limits the range of D_{\circ} to less than a factor of 4.

Mogro-Campero has reported (see Fillius et al., 1975) a measurement of the diffusion coefficient at 10 of $D(L) = D_{10} \left(\frac{L}{5.9}\right)^{n_d}$ where $1.5 \times 10^{-8} < D_{10} < 3.1 \times 10^{-7} \text{ sec}^{-1}$ and $3.6 < n_d < 4.0$. Using the extreme values of n_d gives $0.12, 0.25 < D_{\circ} \times 10^{10} < 2.6, 5.2$ for $n_d = 4, 3.6$. We note that in (39) the actual value of D_{\circ} is likely to be closer to $D_{\circ \text{ min}}$, since the upper value of M (352 MeV/G) which we have used corresponds to the 3000 MHz (~ 10.4 cm) emitting particles, and the 10.4 cm emissivity peaks near $L = 1.8$. Thus, if we estimate $D_{\circ \text{ min}}$ as a probable value for D_{\circ} , this value agrees well with Mogro-Camperos' measurement. Simpson et al. (1974) have reported a measurement of the diffusion coefficient $2 \times 10^{-7} < D_{10} < 10^{-6} \text{ sec}^{-1}$; assuming $\alpha = 4$, $1.5 < D_{\circ} \times 10^{10} < 7.7$, which is also consistent with equation (39).

Birmingham et al. (1974), using a pre-Pioneer 10 value of 10 Gauss for the magnetic field, concluded that a diffusion

coefficient of $1.7 \times 10^{-9} L^{1.95} \text{ sec}^{-1}$ gave the best fit to the 10.4 cm emissivity. We note that equation (20) gives for $B_0 = 10$ Gauss and $\alpha = 2$ the value $D_{0 \text{ min}} = 1.7 \times 10^{-9} \text{ sec}^{-1}$ when $f_c = 3000$ MHz and $L = 1.8$.

Our conclusions can be ordered in decreasing L value:

1) The fact that the phase space density obeys a power law reasonably well in the loss region $3 < L < 10$ of Fig. 1 suggests the electron lifetime varies as $\tau = \tau_0 L^{2-\alpha}$ and that the relation (31) holds in this region.

2) The inclusion of synchrotron losses which are characterized by exponential dependences in both the particle energy spectrum and particle flux, $J(L)$, in the strong synchrotron loss regime demonstrates that strong synchrotron losses do not occur for 3000 MHz emitting electrons for $L \leq 1.8$. This provides a lower bound for the magnitude of the diffusion coefficient given by (39).

3) If the characteristics of the loss mechanism do not alter and intensify at $L \leq 1.8$ then the decay of the 10.4 cm volume emissivity is concomitant with strong synchrotron losses and the diffusion coefficient is bracketed by equation (39).

4) The scaling of the particle lifetime as $L^{2-\alpha}$ and the magnitude, which is estimated as 6×10^8 sec from equations (39) and (31) for $\alpha = 4$, indicate that if pitch-angle diffusion of the electrons is the culprit, the weak pitch-angle diffusion regime prevails.

5) In the strong synchrotron loss limit the power law

dependence in energy of the distribution should collapse and behave exponentially as equation (B.8). An in situ measurement of the distribution (> 352 Mev/G) inside $L < 1.8$ would test the hypothesis that serious synchrotron losses are present. We note also that for $\alpha = 4$ and $D_0 = 8.8 \times 10^{-11} \text{sec}^{-1}$, equation (20) requires the 200 MHz (150 cm) volume emissivity to peak at $L = 1.5$.

Acknowledgements. We thank J.M. Cornwall and J.E. Maggs for illuminating discussions and R.W. Fillius for his kind hospitality and beneficial discussions of his data. We also thank the referees for an excellent proofreading effort. This work was supported by NASA grant NGL 05-007-190-34.

REFERENCES

- Abramowitz, M. and I.A. Stegun, Handbook of Mathematical Functions, U.S. Government Printing Office, Washington D.C., 1970.
- Beard, D.B. and J.L. Luthey, Analysis of the Jovian electron radiation belts, 2, Observations of the decimetric radiation, *Astrophys. J.*, 183, 679, 1973.
- Berge, G.L., An interferometric study of Jupiter's decimeter radio emission, *Astrophys. J.*, 146, 767, 1966.
- Birmingham, T., W. Hess, T. Northrup, R. Baxter and M. Lojko, The electrical diffusion coefficient in Jupiter's magnetosphere, *J. Geophys. Res.*, 79, 87, 1974.
- Branson, N.J.B.A., High resolution radio observations of the planet Jupiter, *Roy. Astron. Soc. Mon. Notic.*, 139, 155, 1968.
- Brice, N.M. and T.R. McDonough, Jupiter's radiation belts, *Icarus*, 18, 206, 1973.
- Carr, T. and S. Gulkis, The magnetosphere of Jupiter, *Ann. Rev. Astron. Astrophys.*, 7, 577, 1969.
- Carslaw, H.S. and J.C. Jaeger, Conduction of Heat in Solids, p. 479, Oxford University Press, London, 1959.
- Coroniti, F.V., Energetic electrons in Jupiter's magnetosphere, *Astrophys. J., Suppl. Ser.*, 27, 261, 1974.
- Erdelyi, A., W. Magnus, F. Ogerhettinger and F.C. Tricomi, Higher Transcendental Functions, Vol. II, p. 72, McGraw-Hill Book Co., Inc., New York, 1953.
- Fillius W., C. McIlwain, A. Magro-Campero and G. Steinberg,

Pitch angle scattering as an important loss mechanism for energetic electrons in the inner radiation belt of Jupiter, submitted to J. Geophys. Res., 1975.

Gray, A. and G.B. Mathews, A Treatise on Bessel Functions, p. 82, Dover Publications Inc., New York, 1922.

Jahnke, E. and F. Emde, Tables of Functions, p. 205, Dover Publications, Inc., New York, 1945.

McIlwain, C.E. and R.W. Fillius, Differential spectra and phase space densities of trapped electrons at Jupiter, J. Geophys. Res., 80, 1341, 1975.

Schulz, M. and L. Lanzerotti, Particle Diffusion in the Radiation Belts, Springer-Verlag, Berlin, 1974.

Simpson, J.A., D.C. Hamilton, R.B. McKibben, A. Mogro-Campero, K.R. Pyle and A.J. Tuzzolino, The protons and electrons trapped in the Jovian dipole magnetic field region and their interaction with Io, J. Geophys. Res., 79, 3522, 1974.

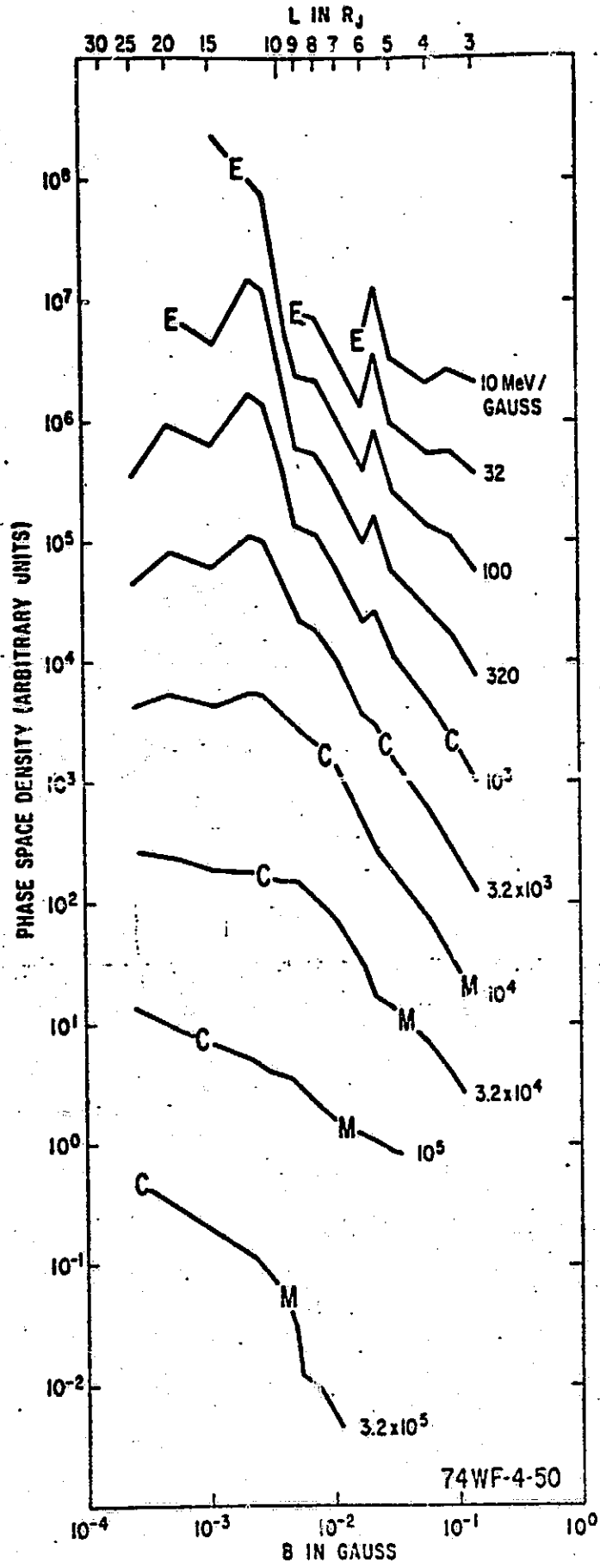
Stansberry, K.G. and R.S. White, Jupiter's radiation belts, J. Geophys. Res., 79, 2331, 1974.

Van Allen, J.A., D.N. Baker, B.A. Randall and D.A. Sentman, The magnetosphere of Jupiter as observed with Pioneer 10 1. Instrument and principal findings, J. Geophys. Res., 79, 3559, 1974.

Figure Caption

Figure 1. Phase space densities reported by McIlwain and Fillius (1974) from Pioneer 10 data, evaluated at constant first invariant M.

REPRODUCIBILITY OF THE ORIGINAL PAGE IS POOR



APPENDIX A

We must evaluate

$$I = \frac{\Gamma(N)}{2\pi i} \int_{-i\infty+\epsilon}^{i\infty+\epsilon} \frac{dt}{t^N} e^t \varphi(t) \quad (\text{A.1})$$

where

$$\varphi(t) = \frac{I_{\nu}(\lambda r) I_{-\nu}(\lambda b) - I_{\nu}(\lambda b) I_{-\nu}(\lambda r)}{I_{\nu}(\lambda a) I_{-\nu}(\lambda b) - I_{\nu}(\lambda b) I_{-\nu}(\lambda a)} \quad (\text{A.2})$$

If N is an integer, the integrand is single-valued and analytic except for simple poles of $\varphi(t)$ on the negative real axis and the pole at the origin. Also, if $N = 1$ we must introduce an upper limit cutoff for $f_0(M)$ to satisfy equation (11). If we close the contour by a semicircle to the left, which gives no contribution, since at best $\varphi(t) \sim e^{c\sqrt{t}}$ compared to e^t (a rigorous treatment can be found in Carslaw and Jaeger, 1959), then by residue theory

$$I = \left(\frac{d}{dt}\right)^{N-1} \left[e^t \varphi(t) \right]_{t=0} + \Gamma(N) \sum_{\text{res}} \frac{e^t}{t^N} \text{Res}[\varphi(t)] \quad (\text{A.3})$$

Note that the anti-symmetric combination $\varphi(t)$ can be written

$$\varphi(t) = \frac{I_{\nu}(\lambda r) K_{\nu}(\lambda b) - I_{\nu}(\lambda b) K_{\nu}(\lambda r)}{I_{\nu}(\lambda a) K_{\nu}(\lambda b) - I_{\nu}(\lambda b) K_{\nu}(\lambda a)} \quad (\text{A.4})$$

$$\text{If } \lambda = e^{\frac{i\pi}{2}} z \text{ and } Y_\nu(z) = \frac{J_\nu(z) \cos \nu\pi - J_{-\nu}(z)}{\sin \nu\pi}$$

then

$$\varphi(t) = \frac{J_\nu(zr) Y_\nu(zb) - J_\nu(zb) Y_\nu(zr)}{J_\nu(za) Y_\nu(zb) - J_\nu(zb) Y_\nu(za)} \quad (\text{A.5})$$

If the roots of $J_\nu(x) Y_\nu(\frac{b}{a}) - J_\nu(\frac{b}{a}) Y_\nu(x) = 0$ are denoted $\alpha_{\nu,n}$, the poles lie in the t plane at $t = -t_{\nu,n} = -\frac{1}{\lambda^2} \gamma_{\nu,n}^2$.

The second term in (A.3) can be expressed as

$$I_2 = \Gamma(N) \sum_{n=1}^{\infty} \frac{e^t}{t^{N-1}} \frac{I_\nu(\lambda r) I_{-\nu}(\lambda b) - I_\nu(\lambda b) I_{-\nu}(\lambda r)}{t \frac{d}{dt} [I_\nu(\lambda a) I_{-\nu}(\lambda b) - I_\nu(\lambda b) I_{-\nu}(\lambda a)]} \Big|_{t=-t_{\nu,n}} \quad (\text{A.6})$$

Using the property that the Wronskian $[I_\nu, I_{-\nu}] = -\frac{2}{\pi} \sin \nu\pi$,

it is straightforward to show that

$$\begin{aligned} & -t \frac{d}{dt} [I_\nu(\lambda a) I_{-\nu}(\lambda b) - I_\nu(\lambda b) I_{-\nu}(\lambda a)] \Big|_{t=-t_{\nu,n}} \\ &= \frac{\sin \nu\pi}{\pi} \frac{J_\nu^2(\gamma_{\nu,n} b) - J_\nu^2(\gamma_{\nu,n} a)}{J_\nu(\gamma_{\nu,n} a) J_\nu(\gamma_{\nu,n} b)} \end{aligned} \quad (\text{A.7})$$

and the second term of (A.3) is evaluated as

$$\begin{aligned} I_2 &= \pi \Gamma(N) (-\lambda^2)^{N-1} \sum_{n=1}^{\infty} \frac{e^{-\frac{\gamma_{\nu,n}^2}{\lambda^2}}}{\lambda^{2(N-1)} \gamma_{\nu,n}} \\ & \cdot \frac{J_\nu(\gamma_{\nu,n} a) J_\nu(\gamma_{\nu,n} b)}{J_\nu^2(\gamma_{\nu,n} b) - J_\nu^2(\gamma_{\nu,n} a)} [J_\nu(\gamma_{\nu,n} b) Y_\nu(\gamma_{\nu,n} r) - (r \leftrightarrow b)] \end{aligned} \quad (\text{A.8})$$

The first term in (A.3) is due to the pole at the origin and is

$$I_1 = \sum_{\ell=0}^{N-1} \binom{N-1}{\ell} \varphi^{(\ell)}(t=0) \quad (\text{A.9})$$

Now $\varphi(t) = \frac{D(r, b, t)}{D(a, b, t)}$, and utilizing the series expansion of

$I_{\pm\nu}$ we have

$$D(r, b, t) = \sum_{n=0}^{\infty} \sum_{k=0}^n \left(\frac{1}{2}\bar{\lambda}\right)^{2n} t^n \cdot \left[\frac{(r/b)^{2k+\nu} b^{2n} - (b/r)^{2k+\nu} r^{2n}}{k! (n-k)! \Gamma(\nu+k+1) \Gamma(-\nu+n-k+1)} \right] \quad (\text{A.10})$$

from which we must evaluate $\varphi^{(\ell)}(t=0)$. The general result is cumbersome, so we shall give only the leading and first order terms. Define

$$A_0(L) = (a/r)^\nu \frac{[1 - (r/b)^{2\nu}]}{[1 - (a/b)^{2\nu}]} \quad (\text{A.11})$$

$$A_1(L) = \frac{b^2 (a/r)^\nu}{[1 - (a/b)^{2\nu}]^2} \left\{ \left[\frac{(r/b)^{2\nu}}{(-\nu+1)} [1 - (r/b)^{2(\nu-1)}] \right] + \frac{1}{(\nu+1)} [1 - (r/b)^{2(\nu+1)}] \right\} \{1 - (a/b)^{2\nu}\} - (r \rightarrow a) \quad (\text{A.12})$$

Then

$$I = A_0 + \binom{N-1}{1} \frac{1}{4} \lambda^{-2} A_1 + (N-2) O(\lambda^{-4}) + \pi \Gamma(N) (-\lambda^{-2})^{N-1}$$

$$\cdot \sum_{n=1}^{\infty} \frac{e^{-\frac{\gamma_{v,n}^2}{\lambda^2}}}{\gamma_{v,n}^{2(N-1)}} \frac{J_{\nu}(\gamma_{v,n}a) J_{\nu}(\gamma_{v,n}b)}{J_{\nu}^2(\gamma_{v,n}b) - J_{\nu}^2(\gamma_{v,n}a)}$$

$$\cdot [J_{\nu}(\gamma_{v,n}b) Y_{\nu}(\gamma_{v,n}r) - (r \leftrightarrow b)] \quad (A.13)$$

and

$$f(L, M) = A \left(\frac{L}{L_0} \right)^{\frac{1}{2}(3-\alpha)} \frac{1}{M^{\frac{1}{2}(N+2)}} \quad (A.14)$$

Special cases are

$$A_0(L) \xrightarrow{\nu \rightarrow 0} \frac{\ln r/b}{\ln a/b} \quad (A.15)$$

$$A_1(L) \xrightarrow{\nu \rightarrow 0} \frac{\ln b/r \{1 - (a/b)^2 [1 + \ln b/a]\} - \ln b/a \{1 - (r/b)^2 [1 + \ln b/r]\}}{[\ln b/a]^2} \quad (A.16)$$

$$A_1(L) \xrightarrow{\nu \rightarrow \pm 1} \frac{\frac{1}{2}(a/r)^2}{[1 - a^2/b^2]^2} \left\{ \left[1 - r^4/b^4 - 4r^2/b^2 \ln b/r \right] \left[1 - a^2/b^2 \right] - (r \leftrightarrow a) \right\} \quad (A.17)$$

As mentioned previously if $N = 1$ we should introduce a cutoff at high momenta $f_0(M) = \frac{A}{M^{3/2}} \theta(M_0 - M)$. The modification alters the previous calculations only slightly and the result is, for $N = 1$

$$f(L, M, N = 1) = A \left(\frac{L}{L_0} \right)^{\frac{1}{2}(3-\alpha)} \frac{1}{M^{3/2}} (M_0 - M)$$

$$\left[A_0 + \sum_{n=1}^{\infty} e^{-\frac{\gamma_{v,n}^2}{\lambda^2} \left(1 - \sqrt{\frac{M}{M_0}} \right)} \frac{\pi J_v(\gamma_{v,n} b) J_v(\gamma_{v,n} a)}{J_v^2(\gamma_{v,n} b) - J_v^2(\gamma_{v,n} a)} \right. \\ \left. \cdot [J_v(\gamma_{v,n} b) Y_v(\gamma_{v,n} r) - (r \rightarrow b)] \right] \quad (A.18)$$

APPENDIX B

a) If the arguments of all the Bessel functions in equations (14) and (A.1) are large, the asymptotic expansion of $I_{\pm\nu}$ produces

$$\phi(t) \sim \sqrt{a/r} e^{\lambda(a-r)}$$

$$\left[\frac{1 + \frac{4\nu^2 - 1}{8\lambda} \left(\frac{1}{r} - \frac{1}{b} \right) + \frac{(4\nu^2 - 1)(4\nu^2 - 9)}{128\lambda^2} \left(\frac{1}{b^2} + \frac{1}{r^2} - \frac{4\nu^2 - 1}{4\nu^2 - 9} \frac{2}{rb} \right) + \dots}{[r \rightarrow a]} \right] \quad (\text{B.1})$$

In which we have retained the dominant exponentials of both numerator and denominator. Inverting the denominator yields

$$\phi(t) \sim \sqrt{a/r} e^{\lambda(r-a)}$$

$$\left[1 + \frac{4\nu^2 - 1}{8\lambda} \left(\frac{1}{r} - \frac{1}{a} \right) + \frac{(4\nu^2 - 1)(4\nu^2 - 9)}{128\lambda^2} \left(\frac{1}{r^2} - \frac{1}{a^2} \right) + \frac{(4\nu^2 - 1)^2}{64\lambda^2 a} \left(\frac{1}{a} - \frac{1}{r} \right) \right] \quad (\text{B.2})$$

Using the inverse transform

$$\mathcal{L}^{-1} \left[s^{\mu - \frac{1}{2}} e^{-\sqrt{ks}} \right] = \frac{e^{-k/8y}}{2^{\mu} \sqrt{\pi} y^{\mu + \frac{1}{2}}} D_{2\mu} \left(\sqrt{\frac{k}{2y}} \right) \quad (\text{B.3})$$

where $D_{2\mu}(z)$ is the parabolic cylinder function (see Abramowitz and Stegun (1970) for definitions of all functions in this paper)

we have for the distribution function

$$\begin{aligned}
 f(L, M) &\sim A \left(\frac{L}{L_0} \right)^{\frac{1}{2}(3-\alpha)} \frac{\Gamma(N)}{M^{\frac{1}{2}}(N+2)\sqrt{r}} \\
 &\cdot e^{\frac{-\frac{1}{8}\lambda^2 r^2 (1-a/r)^2}{2^{\frac{1}{2}} - N\sqrt{\pi}}} D_{1-2N}(w) \\
 &\cdot \left[1 - \frac{4v^2 - 1}{8\lambda a} (1-a/r) \frac{\sqrt{2} D_{-2N}(w)}{D_{1-2N}(w)} + \frac{(4v^2 - 1)^2}{32\lambda^2 a^2} \right. \\
 &\cdot (1-a/r) \left[1 - \frac{1}{2} \frac{4v^2 - 9}{4v^2 - 1} (1+a/r) \right] \frac{D_{-1-2N}(w)}{D_{1-2N}(w)} + \dots \left. \right] \quad (B.4)
 \end{aligned}$$

with

$$w = \frac{\bar{\lambda} r (1-a/r)}{\sqrt{2}}$$

If N is a positive integer (B.4) reduces to

$$\begin{aligned}
 f(L, M) &\sim A \left(\frac{L}{L_0} \right)^{\frac{1}{2}(3-\alpha)} \frac{\Gamma(N)}{M^{\frac{1}{2}}(N+2)\sqrt{r}} \sqrt{a} 4^{N-1} i^{2N-2} \text{ERFC}(w/\sqrt{2}) \\
 &\cdot \left[1 - \frac{4v^2 - 1}{4\lambda a} (1-a/r) \frac{i^{2N-1} \text{ERFC}(w/\sqrt{2})}{i^{2N-2} \text{ERFC}(w/\sqrt{2})} \right. \\
 &+ \frac{(4v^2 - 1)^2}{16\lambda^2 a^2} (1-a/r) \left[1 - \frac{1}{2} \frac{4v^2 - 9}{4v^2 - 1} (1+a/r) \right] \\
 &\cdot \left. \frac{i^{2N} \text{ERFC}(w/\sqrt{2})}{i^{2N-2} \text{ERFC}(w/\sqrt{2})} \right] \quad (B.5)
 \end{aligned}$$

For large $w \gg 1$

$$i^{2N-2} \text{ERFC}(w/\sqrt{2}) - \frac{2}{\sqrt{\pi}} \frac{e^{-\frac{1}{4}\bar{\lambda}^2 r^2 (1-a/r)^2}}{[\bar{\lambda}r(1-a/r)]^{2N-1}} \quad (\text{B.6})$$

which demonstrates the exponential dependence on M and $r^2 = L^{-(\alpha+11/2)}$ for strong synchrotron losses. Equation (B.4) is useful when $\lambda a \geq 1$, for which values the series in equation (A.18) converges very slowly.

b) The intermediate case of weak losses at $L = L_0$ is obtained by treating $\lambda a \ll 1$, $\lambda b \gg 1$ and $\lambda r \gg 1$. Expand $I_{\pm\nu}(\lambda a)$ in small argument form and keep only the leading term. If $\nu \neq 0$, $K_{\nu}(\lambda a) \approx \frac{1}{2}\Gamma(\nu)(\lambda a)^{-\nu}$ dominates. We have then

$$\varphi(t) \sim \sqrt{\frac{2-\alpha}{\lambda r}} \frac{1}{\Gamma(\nu)} (\frac{1}{2}\lambda a)^{\nu} e^{-\lambda r} \left[1 + \frac{4\nu^2 - 1}{8\lambda r} + \frac{(4\nu^2 - 1)(4\nu^2 - 9)}{128\lambda^2 r^2} + \dots \right] \quad (\text{B.7})$$

which gives

$$f(L, M) \sim A \left(\frac{L}{L_0} \right)^{\frac{1}{2}(3-\alpha)} \frac{\Gamma(N)}{M^{\frac{1}{2}(N+2)}} \frac{1}{\Gamma(\nu)} (\frac{1}{2}\bar{\lambda}a)^{\nu} \sqrt{\frac{2}{\bar{\lambda}r}} 2^{-\mu} e^{-\frac{1}{8}\bar{\lambda}^2 r^2} D_{2\mu}(w) \cdot \left[1 + \frac{4\nu^2 - 1}{8\lambda r} \frac{\sqrt{2} D_{2\mu-1}(w)}{D_{2\mu}(w)} + \frac{(4\nu^2 - 1)(4\nu^2 - 9)}{64\bar{\lambda}^2 r^2} \frac{D_{2\mu-2}(w)}{D_{2\mu}(w)} \right] \quad (\text{B.8})$$

where

$$\mu = \frac{1}{2}(\nu + \frac{1}{2}) - N \quad w = \frac{\bar{\lambda}r}{\sqrt{2}}$$

for large values of w

$$D_{2\mu}(w) \sim w^{2\mu} e^{-\frac{1}{8}\lambda^2 r^2} \left[1 + \frac{4\mu(\frac{1}{2} - \mu)}{\lambda r} + O\left(\frac{1}{\lambda^2 r^2}\right) \right] \quad (\text{B.9})$$

and $f(L)$ exhibits the same exponential dependence as equation (B.4) when $\lambda^2 r^2 \gg 4$.

REPRODUCIBILITY OF THE ORIGINAL PAGE IS POOR

UCLA PLASMA PHYSICS GROUP REPORTS

PPG-1 Propagation of Ion Acoustic Waves Along Cylindrical Plasma Columns", A.Y. Wong (July 1965). *Phys. Fluids* 9, 1261 (1966).

PPG-2 Stability Limits for Longitudinal Waves in Ion Beam-Plasma Interaction", B.D. Fried and A.Y. Wong (August 1965). *Phys. Fluids* 9, 1084 (1966).

PPG-3 The Kinetic Equation for an Unstable Plasma in Parallel Electric and Magnetic Fields", B.D. Fried & S.L. Ossakow. *Phys. Fluids* 9, 2428 (1966).

PPG-4 Low-Frequency Spatial Response of a Collisional Electron Plasma", B.D. Fried, A.M. Sauton & D.L. Sachs (August 1965). *Phys. Fluids* 9, 392 (1966).

PPG-5 Effects of Collisions on Electrostatic Ion Cyclotron Waves", A.Y. Wong, B.J. Judd and F. Hal (December 1965). *Phys. Letters* 21, 157 (1966).

PPG-6 Interaction Between Ion Beams and Plasmas", R. Rowberg, A.Y. Wong & J.M. Sellen (April 1966). *APS Bull.* 10, 3182 (1965).

PPG-7 Observation of Cyclotron Echoes from a Highly Ionized Plasma", D.E. Kaplan & R.W. Hill (May 1966). *Phys. Lett.* 21, 157 (1966).

PPG-8 Excitation and Damping of Drift Waves", A.Y. Wong and R. Rowberg (July 1966). *Proceedings of 1st Int. Conf. on Quiescent Plasmas*, Frascati, Rome, 1967. *Phys. Rev. Lett.* 18, 526 (1967).

PPG-9 The Guiding Center Approximation", S.L. Ossakow (November 1966). Dissertation.

PPG-10 Plasma Streaming into a Magnetic Field", S.L. Ossakow & A.Y. Wong (March 1967). *Phys. Fluids* 10, 1007 (1967).

PPG-11 Cooperative Effects in Plasma Echo Phenomena", A.Y. Wong (March 1967). Dissertation.

PPG-12 A Quantum Mechanical Study of the Electron Gas Via the Test Particle Method", M.C. Rensink (March 1967) Dissertation.

PPG-13 Linear and Nonlinear Theory of Grid Excitation of Low Frequency Waves in a Plasma", G.L. Johnston (April 1967) Diss.

PPG-14 The Expansion and Diffusion of an Isolated Plasma Column", J. Hyman (May 1967). Dissertation.

PPG-15 Two-Pole Approximation for the Plasma Dispersion Function", B.D. Fried, C.L. Hedrick & J. McCune (Aug. 1967). *Phys. Fluids* 11, 249, (1968).

PPG-16 Experimental Investigation of Electron Runaway Phenomena", J.S. DeGroot (August 1967) Dissertation.

PPG-17 Parametric Coupling Between Drift Waves", F. Hal, R. Rowberg & A.Y. Wong (Oct. 1967). *Proc. of 2nd Int. Symp. on Fluctuations and Diffusion in Plasmas*, June, 1967.

PPG-18 Cyclotron Echoes from Doppler Effects", A.Y. Wong (March 1968). *Phys. Rev. Lett.* 20, 518 (1968).

PPG-19 Ion Wave Echoes", D.P. Baker, N.R. Avery & A.Y. Wong (Nov. 1967). *Phys. Rev. Lett.* 20, 175 (1967).

PPG-20 Cyclotron Echoes in Plasmas", D.Judd (March 1968). Dissertation.

PPG-21 Test Particle Theory for Quantum Plasmas", H.C. Rensink (Oct. 1967). *Phys. Rev.* 166, 175 (1967).

PPG-22 Artificial Van Allen Belt", C.F. Kennel (Nov. 1967).

PPG-23 Landau Damping of Ion Acoustic Waves in a Cesium Plasma with Variable Electron-Ion Temperature Ratio", K.B. Renjanga (Oct. 1967). Dissertation.

PPG-24 The Inhomogeneous Two-Stream Instability", G. Knorr (Sept. 1967). In *Physics of the Magnetosphere*, R. Carovillano, M. Hoshino & H.C. Kennel & H.C. Kennel (Dec. 1967). *J. Plasma Phys.* 3, 55 (1969).

PPG-25 Small Amplitude Waves in High β Plasmas", V. Formisano & C.F. Kennel (Feb. 1968). *J. Plasma Phys.* 3, 55 (1969).

PPG-26 Low β Plasma Penetration Across a Magnetic Field", B.D. Fried & S. Ossakow (Mar. 1968). *Phys. Fluids* 12, 707 (1969).

PPG-27 Annual Status Report", Feb. 1, 1967-Jan. 31, 1968, Principal Investigators, A. Bahos, Jr., B.D. Fried, C.F. Kennel.

PPG-28 The Theorist's Magnetosphere", C.F. Kennel & F.L. Scarf (April 1968) In *Plasma Waves in Space* and in the Laboratory, ed. J.O. Thomas & W.J. Landmark, Edinburgh U. Press, Edinburgh, Vol. II, 1969.

PPG-29 Electromagnetic Fitch Angle Instabilities in Space", C.F. Kennel & F.L. Scarf (April 1968) In *Plasma Waves in Space* and in the Laboratory, ed. J.O. Thomas & W.J. Landmark, Edinburgh U. Press, Edinburgh, Vol. II, 1969.

PPG-30 Electromagnetic Echoes in Collisionless Plasmas", A.Y. Wong (June 1968) *Phys. Fluids* 12, 1097 (1969).

PPG-31 Parametric Excitation of Drift Waves in a Resistive Plasma", G. Weyl & M. Goldman (June 1968) *Phys. Fluids* 12, 1097 (1969).

PPG-32 Parametric Excitation from Thermal Fluctuations at Plasma-Drift Wave Resonances", A.Y. Wong, M.V. Goldman, W. Hal, A. Rowberg (May 1968). *Phys. Rev. Letters* 21, 518 (1968).

PPG-33 Current Decay in a Streaming Plasma Due to Ion Turbulence", S.L. Ossakow & B.D. Fried (June 1968). *Phys. Fluids* 11, 274 (1968).

PPG-34 Temperature Gradient Instabilities in Axisymmetric Systems", E.D. Soper (June 1968) *Phys. Fluids* 12, 1489 (1969).

PPG-35 Electron Cyclotron Echo Phenomena in a Hot Collisionless Plasma", D. Judd (Aug. 1968) *Phys. Fluids* 12, 1489 (1969).

PPG-36 Transverse Plasma Wave Echoes", B.D. Fried & C. Olson (Oct. 1968). *Phys. Rev.* 180, 214 (1969).

PPG-37 Low Frequency Interchange Instabilities in Axisymmetric Systems", E.D. Soper (June 1968) *Phys. Fluids* 12, 1489 (1969).

PPG-38 Drift Waves in the Linear Regime", R.E. Rowberg & A.Y. Wong (Feb. 1969). *Phys. Fluids* 13, 672 (1970).

PPG-39 Parametric Mode-Coupling Between Drift Waves in Plasmas", F. Hal & A.Y. Wong (Jan. 1969) *Phys. Fluids* 13, 672 (1970).

PPG-40 Nonlinear Oscillatory Phenomena with Drift Waves in Plasmas", F. Hal & A.Y. Wong (Jan. 1969) *Phys. Fluids* 13, 672 (1970).

PPG-41 Ion Beams Excited by a Grid in a Plasma", H. Ikehzi & R.J. Taylor (Feb. 1969) *J. Appl. Phys.* 41, 730 (1970).

PPG-42 Measurements of Diffusion in Velocity Space from Ion-Ion Collisions", A. Wong & A.Y. Wong (Sept 1970) *Phys. Rev. Lett.* 25, 923, (1969).

PPG-43 Nonlinear Excitation in the Ionosphere", A.Y. Wong (May 1969). *Phys. Rev. Lett.* 22, 923, (1969).

PPG-44 Observation of 1st order Ion Energy Distribution in Ion Acoustic Waves", H. Ikehzi, R. Taylor, *Phys Rev Lett* 22, 923, (1969).

PPG-45 A New Representation for the Conductivity Tensor of a Collisionless Plasma in a Magnetic Field", B.D. Fried & C. Hedrick (May 1969). *Festschrift for Gregor Hetsch*, U. of Chicago Press, (1969).

PPG-46 Direct Measurements of Linear Growth Rates and Nonlinear Saturation Coefficients", A.Y. Wong & F. Hal (April 1969). *Phys. Rev. Lett.* 23, 163 (1969).

PPG-47 Electron Precipitation Pulsations", F. Coroniti & C.F. Kennel (April 1969) *J. Geophys Res* 75, 3279 (1970).

PPG-48 Auroral Micropulsation Instability", F. Coroniti & C.F. Kennel (May 1969) *J. Geophys Res* 75, 1863 (1970).

PPG-49 Effect of Fokker-Planck Collisions on Plasma Wave Echoes", G. Johnston (June 1969) *Phys. Fluids* 13, 136 (1970).

PPG-50 Linear and Nonlinear Theory of Grid Excitation of Low Frequency Waves in a Plasma", G. Johnston (July 1969).

PPG-51 Theory of Stability of Linear Amplitude Periodic (BCK) Waves in Collisionless Plasmas", M.V. Goldman (June 1969) *Phys. Fluids* 13, 1281 (1970).

PPG-52 Observation of Strong Ion-Wave-Mode Interaction", R. Taylor & H. Ikehzi (Aug 1969). *Phys. Fluids* 13, 1802 (1970).

PPG-53 Optical Mixing in a Magnetoactive Plasma", G. Weyl (Aug 1969) *Phys. Fluids* 13, 958 (1969).

PPG-54 Trapped Particles and Echoes", A.Y. Wong & R. Taylor (Oct 1969) *Phys. Rev. Lett.* 23, 958 (1969).

PPG-55 Resonance and Interaction of Ion-Acoustic Solitons", H. Ikehzi, R.J. Taylor & D.P. Baker, *Phys Rev Lett* 23, 206 (1970).

PPG-56 Observation of Collisionless Electrostatic Shocks", R. Taylor, D. Baker & H. Ikehzi, *Phys Rev Lett* 23, 899 (1970).

PPG-57 Absorption Loss of Ring Current Protons", J.M. Cornwall, F.V. Coroniti & R.M. Thorne (Jan 1970) *J. Geophys Res* 75, 4899 (1970).

PPG-58 Efficient Modulation Coupling Between Electron and Ion Resonances in Magnetoactive Plasmas", A. Wong, D.R. Baker, *Phys. Rev. Lett.* 23, 808 (1970).

PPG-59 Nonlinear Interaction of Quasi-Transverse and Quasi-Longitudinal Waves in an Inhomogeneous Plasma", C.L. Hedrick (Jan 1970) *Phys. Rev. Lett.* 23, 808 (1970).

PPG-60 Observation of Strong Ion-Acoustic Wave-Wave Interaction", R.J. Taylor & H. Ikehzi (Jan 1970). *Phys. Fluids* 13, 2348 (1970).

PPG-61 Perturbed Ion Distributions in Ion Waves and Echoes", H. Ikehzi & R.J. Taylor (Jan 1970) *Phys Fluids* 13, 2348 (1970).

PPG-62 Perturbation of Ion Cyclotron Harmonic Wave", E.R. Ault & H. Ikehzi (Nov 1970) *Phys Fluids* 13, 2874 (1970).

PPG-63 The Analytic and Asymptotic Properties of the Plasma Dispersion Function", A. Bahos, Jr., & G. Johnston (Feb 1970). *J. Plasma Phys.* 4, 26, (1970).

PPG-64 Effect of Ion-Ion Collision and Ion Wave Turbulence on the Ion Wave Echo", D. Baker (June 1970). *J. Plasma Phys.* 4, 26, (1970).

PPG-65 Dispersion Discontinuities of Strong Collisionless Shocks", F.V. Coroniti (May 1970). *J. Plasma Phys.* 4, 26, (1970).

PPG-66 An Ion Cyclotron Instability", E.S. Sibel (Apr 1970). Dissertation.

PPG-67 Turbulence Structure of Finite- β Perpendicular Fast Shocks", F.V. Coroniti (Apr 1970). *J. Geophys Res* 75, 7067 (1970).

PPG-68 Steepening of Ion Acoustic Waves and Formation of Collisionless Electrostatic Shocks", R. Taylor (Apr 1970).

PPG-69 A Method of Studying Trapped Particles Between in Magnetic Geometries", C.S. Liu & A.Y. Wong (Apr 1970). *Phys Rev Lett* 25, 1702 (1970).

PPG-70 A Note on the Differential Equation $g'' + a^2 g = 0$ ", E.S. Sibel (Apr 1970). *Phys. Fluids* 13, 160 (1972).

PPG-71 Plasma response to a Step Electric Field Greater than the Critical Runaway Field, With and Without an External Applied Magnetic Field", J.L. Robin (June 1970). Dissertation.

PPG-72 The UC Mathematical On-Line System as a Tool for Teaching Physics", B.D. Fried & R.O. White (Aug 1970). *Proc of Comp Graphs*, 156-156, 1970.

PPG-73 High Frequency Hall Current Instability", R. Lee, C.F. Kennel, J.M. Rindge (Aug 1970). *Radio Sci* 6, 209 (1971).

PPG-74 Laminar Wave Train Structure of Collisionless Magnetic Slow Shocks", F.V. Coroniti (Sept 1970). *Nucl Fusion* 11, 261 (1971).

PPG-75 Field-Aligned Current Instabilities in the Topside Ionosphere", J.M. Rindge & C.F. Kennel (Aug 1970). *J. Geophys Res* 76, 3005 (1971).

PPG-76 Spatial Cyclotron Damping", C. Olson (Sept 1970). *Phys Fluids* 13, 160 (1972).

PPG-77 Electromagnetic Plasma Wave Propagation Along a Magnetic Field, C. Olson (Sept 1970). Dissertation.

PPG-78 Electron Plasma Waves and Free-Streaming Electron Bursts", M. Ikehzi, F.J. Barrett, R.D. White & A.Y. Wong (Nov 1970). *Phys Fluids* 13, 1997 (1971).

PPG-79 Relativistic Electron Precipitation During Magnetic Storm Main Phase", R.M. Thorne & C.F. Kennel (Nov 1970). *J. Geophys Res* 76, 4446 (1971).

PPG-80 A Unified Theory of SAR-Arc Formation at the Plasmapause", J.M. Cornwall, F.V. Coroniti & R.M. Thorne (Nov 1970). *J. Geophys Res* 76, 4428 (1971).

PPG-81 Nonlinear Collisionless Interaction Between Electron and Ion Modes in Inhomogeneous Magnetoactive Plasmas", N. Booth (Dec 1970). Dissertation.

PPG-82 Observation of Parametrically Excited Ion Acoustic Waves", R. Stenzel (Mar 1971). *Comm Astro & Space Phys* 3, 87 (1971).

PPG-83 Remote Double Resonance Coupling of Radar Energy to Ionospheric Irregularities", C.F. Kennel (Jan 1971). *Comm Astro & Space Phys* 3, 87 (1971).

PPG-84 Ion Acoustic Waves in a Multi-Ion Plasma", B.D. Fried, R.D. White, T. Sanez (Jan 1971). *Phys Fluids* 14, 2388 (1971).

PPG-85 Current-Driven Electrostatic and Electromagnetic Ion Cyclotron Instabilities", D.W. Forslund, C.F. Kennel, J.M. Rindge (Feb 1971). *Comm Astro & Space Phys* 3, 115 (1971).

PPG-86 Locating the Magnetospheric Ring Current", C.F. Kennel & R. Thorne (Mar 1968). *Comm Astro & Space Phys* 3, 115 (1971).

PPG-87 Ion Acoustic Instabilities Due to Ions Streaming Across Magnetic Field", F.J. Barrett, R.J. Taylor (Mar 1971). *Phys Rev Lett* 22, 973 (1971).

PPG-88 Evolution of Turbulent Electronic Shocks", A.Y. Wong & R. Heans (July 1971) *Phys Rev Lett* 22, 973 (1971).

PPG-89 Density Step Production of Large Amplitude Collisionless Electrostatic Shocks and Solitons", D.B. Cohen (June 1971). *Phys Rev Lett* 26, 115 (1971).

PPG-90 Turbulent Resistivity, Diffusion and Heating", B.D. Fried, C.F. Kennel, K. Mckenzie, F.V. Coroniti, J.M. Rindge, R. Stenzel, R.J. Taylor, R.D. White, A.Y. Wong, M. Bernstein, J.M. Sellen, D. Forslund & R.A. Sagdeev (June 1971) *Proc 4th Conf. Plasma Phys & Cont Nucl Fus Res* 11, Vienna (1971).

PPG-91 Nonlinear Evolution and Saturation of an Unstable Electrostatic Wave", B.D. Fried, C.S. Liu, R.W. Heans & R.Z. Sagdeev (Aug 1971).

PPG-92 Cross-Field Current-Driven Ion Acoustic Instability", P.J. Barrett, B.D. Fried, C.F. Kennel, J.M. Sellen & R.J. Taylor (Dec 1971). *Phys Rev Lett* 28, 337 (1972).

PPG-93 S-D Velocity Space Diffusion in Beam-Plasma Interaction Without Magnetic Field", P.J. Barrett, D. Gression & A.Y. Wong (Sept 1971). *Proc 3rd Int Conf on Quies Plas*, 201, Elsinore, Calif., 1971.

PPG-94 Dayside Auroral Oval Plasma Density and Conductivity Enhancements Due to Magnetosheath Electron Precipitation", C.F. Kennel & M. Heans (Sept 1971). *J. Geophys Res* 77, 2294 (1972).

PPG-95 Collisionless Wave-Particle Interactions Perpendicular to the Magnetic Field", A.Y. Wong, D.L. Jassby (Sept 1971). *Phys Rev Lett* 27, 41 (1972).

PPG-96 Magnetospheric Substorms", F.V. Coroniti & C.F. Kennel (Sept 1971) *Cosmos Plasma Phys. Proc of Conf Cos Plas Phys held at Euro Space Res Inst, Frascati, Italy, June 1971. Plasma Phys. 1972, ed. Karl Schindler.*

PPG-97 Structure of Ion Acoustic Solitons and Shock Waves in a Two-Component Plasma", R.D. White, B.D. Fried & F.V. Coroniti (Sept 1971) *Phys Fluids* 15, 1488 (1972).

PPG-98 Solar Wind Interaction with Lunar Magnetic Field", G. Siscoe (Meteorology Dept & B. Goldstein (JPL) (Nov 1971). *Phys Fluids* 15, 1488 (1972).

PPG-99 Changes in Magnetospheric Configuration During Substorm Growth Phase", F.V. Coroniti & C.F. Kennel (Nov 1971). *J. Geophys Res* 77, 3361 (1972).

PPG-100 Pitch-Angle Diffusion of Radiation Belt Electrons Within the Magnetosphere", L.R. Lyons, R.M. Thorne, C.F. Kennel (Jan 1972) *Phys. Fluids* 15, 1844 (1972).

PPG-101 Pitch-Angle Diffusion of Radiation Belt Electrons Within the Magnetosphere", L.R. Lyons, R.M. Thorne, C.F. Kennel (Jan 1972) *Phys. Fluids* 15, 1844 (1972).

PPG-102 Remote Feedback Stabilization of a High- β Plasma", F.F. Chen, D. Jassby & M. Maricic (Dec 1971) *Phys Fluids* 15, 1844 (1972).

PPG-103 Remote Plasma Control, Heating Measurements of Electron Distribution and Trapped Particles by Nonlinear Electromagnetic Interaction", A.Y. Wong, F.F. Chen, N. Booth, D.L. Jassby, R. Stenzel, D. Baker & C.S. Liu (June 1971) *J. Plasma Phys & Cont Nucl Fus Res* 11, 335 (1971).

PPG-104 Computational and Experimental Plasma Physics for Theoreticians", B.D. Fried (Jan 1972) *Adv. Plasma Phys.* 5, 211 (1972).

PPG-105 Threshold and Saturation of the Parametric Decay Instability", R. Stenzel & A.Y. Wong (Nov 1971) *Phys Rev Lett* 28, 574 (1972).

PPG-106 Laser Amplification in an Inhomogeneous Plasma", R. White (Jan 1972).

PPG-107 External Production and Control of Electrojet Irregularities", K. Lee, F.S. Lee & C.F. Kennel (Jan 1972) *J. Geophys Res* 77, 4197 (1972).

PPG-108 Ion Heating Via Turbulent Ion Acoustic Waves", R.J. Taylor & F.V. Coroniti (Feb 1972) *Phys Rev Lett* 29, 34 (1972).

PPG-109 Polarization of the Auroral Electrojet", F.V. Coroniti & C.F. Kennel (Feb 1972) *J. Geophys Res* 77, 3835 (1972).

PPG-110 Mode Coupling and Wave-Particle Interactions for Unstable Ion Acoustic Waves", P. Martin & B. Fried (Feb 1972). *Phys Fluids* 15, 2275 (1972).

PPG-111 Parallel Magnetic Multi-pole Confinement of a Magnetic Field-Free Plasma", R. Lippacher (Mar 1972) Dissertation.

PPG-112 Turbulence in Electrostatic Collisionless Shock Waves", R.W. Heans (Apr 1972). Dissertation.

PPG-113 Large Diameter, Quiescent Plasma in a Magnetoactive Field", E. Ault (Apr 1972) Dissertation.

PPG-114 Parametric Pitch-Angle Diffusion of Radiation Belt Particles by Ion-Cyclotron Waves", L.R. Lyons & R.M. Thorne (Mar 1972). *J. Geophys Res* 77, 3808 (1972).

PPG-115 A New Role for Infrared Lasers", F.F. Chen (May 1972) *Comm Plasma Phys & Cont Fus* 1, 81 (1972).

PPG-116 Electrostatic Instability of Ring Current Protons Beyond the Plasmapause During Injection Events", F.V. Coroniti, R.W. Friedrichs & R.D. White (May 1972) *J. Geophys Res* 77, 6245 (1972).

PPG-117 Magnetosphere of the Outer Planets", C.F. Kennel (May 1972) *Space Sci Rev* 12, 511 (1973).

PPG-118 Measurement of Transverse and Longitudinal Heat Flow in a Laser-Heated, Magnetically Confined Arc Plasma", S.A. Lee (June 1972) Dissertation. Cond. version by S.W. Fay, F. Chen & D. Jassby, *Phys Rev Lett* 42a, 261 (1972).

- PPG-122 Plasmaspheric Hiss", R.M.Thorne, L.J.Smith, R.G.Burton, R.S.Holzer (July 1972) *J Geophys Res* **78**, 1581 (1973).
- PPG-123 Magnetospheric Electrons", F.V.Coroniti & R.M.Thorne (July 1972) *Ann Rev Earth & Plan Sci* **1**, 107 (1973).
- PPG-124 Calculation of Reflection and Transmission Coefficients for a Class of One-Dimensional Wave Propagation Problems in Inhomogeneous Media", A. Baños (Sept 1972) *J Math Phys* **13**, 903 (1972).
- PPG-125 Electromagnetic Wave Functions for Parabolic Plasma Density Profiles", A. Baños & D.Kelley (Sept 1972) *Phys Fluids* **17**, 1275 (1974).
- PPG-126 Amplification of Electromagnetic Waves in Overdense Plasmas", F.F.Chen & B.B.White (Sept 1972) *J Plas Phys* **16**, 565 (1974).
- PPG-127 Abstracts presented at Am Phys Soc Div of Plas Phys Ann Meeting, Monterey (Nov 13-16, 1972).
- PPG-128 Can the Ionosphere Regulate Magnetospheric Convection?", F.V.Coroniti & C.F.Kennel (Oct 1972) *J Geophys Res* **78**, 2837 (1973).
- PPG-129 Nonlinear Stabilization of Oscillating Two-Stream Instability", K.Nishikawa, Y.C.Lee & P.K.Kaw (Oct 1972) *Phys Fluids* **16**, 1380 (1973).
- PPG-130 Drift Waves in Finite β Plasmas", M.S.Chance (Oct 1972) Thesis.
- PPG-131 Wave Packet Propagation of Nonlinear Plasma Wave Kinetics", K.Nishikawa & D.D.Fried (Oct 1972) *Phys Fluids* **16**, 1321 (73).
- PPG-132 Electron Cyclotron Drift Instability: Experiment", R.H.Nipin & R.L.Stenzel (Oct 1972) *Phys Rev Lett* **30**, 45 (1973).
- PPG-133 Resonant Excitation of Electrostatic Modes with Electromagnetic Waves", G.Schmidt (Oct 1973) *Phys Fluids* **16**, 1676 (1973).
- PPG-134 Energetic Ion Beam Source and Free-Stream Beam Diagnostic Techniques", R.L.Stenzel & R.H.Nipin (Nov 1972) *Rev Sci Instr* **43**, 617 (1972).
- PPG-135 Electron Plasma Waves in an Unbounded Uniform Magnetoplasma", R.L.Stenzel (Nov 1972) *Phys Fluids* **16**, 565 (1973).
- PPG-136 Convective Amplification of Type I Irregularities in the Equatorial Electrojet", K.Lee & C.F.Kennel (Nov 1972) *J Geophys Res* **78**, 4619 (1973).
- PPG-137 Effects of Propagation Parallel to the Magnetic Field on the Type I Electrojet Irregularity Instability", K.Lee & C.F.Kennel (Nov 1972) *Plan & Space Sci* **21**, 1539 (1973).
- PPG-138 Analog Computer Simulation of Parametric Instabilities", R.L.Stenzel (Nov 1972) Thesis.
- PPG-139 Theory of Double Resonance Parametric Excitation in Plasmas", G.Arnush, B.D.Fried, C.F.Kennel, K.Nishikawa & A.Y.Wong (Nov 1972) *Phys Fluids* **16**, 2270 (1973).
- PPG-140 Filamentation and Trapping of Electromagnetic Radiation in Plasmas", P.Sau, G.Schmidt & T.Wilcox (Dec 1972) *Phys Fluids* **16**, 1522 (1973).
- PPG-141 Finite Drift Wave Instability", M.S.Chance, F.V.Coroniti & C.F.Kennel (Jan 1973) *J Geophys Res* **78**, 7521 (1973).
- PPG-142 The Formation of Ion Acoustic Shocks", B.B.White, B.D.Fried & F.V.Coroniti (Jan 1973) *Phys Fluids* **17**, 211 (1974).
- PPG-143 Experiments on Parametric Instabilities", A.Y.Wong (Mar 1973).
- PPG-144 On Cosmic Ray Generation by Pulsars", C.F.Kennel, G.Schmidt & T.Wilcox (Mar 1973) *Phys Rev Lett* **31**, 1364 (1973).
- PPG-145 On the Marginally Stable Saturation Spectrum of Unstable Type I Equatorial Electrojet Irregularities", K.Lee, C.F.Kennel & F.V.Coroniti (Apr 1973) *J Geophys Res* **78**, 249 (1974).
- PPG-146 Spatial Growth Properties of Parametric & Backscattering Plasma Instabilities", R.L.Stenzel, R.Gould & G.Schmidt (Apr 1973) *Phys Fluids* **16**, 1271 (1973).
- PPG-147 Evolution of BGR-Like Modes with Trapped Electrons", A.Y.Wong, B.H.Avon & B.Nipin (Apr 1973) *Phys Rev Lett* **30**, 1299 (1973).
- PPG-148 Stabilization of Ion Acoustic Waves by Electron Trapping", N.Abricht (Apr 1973) *Phys Fluids* **17**, 206 (1974).
- PPG-149 Turbulence in Electrostatic Ion Acoustic Shocks", R.W.Means, F.V.Coroniti, A.Y.Wong & B.B.White (May 1973) *Phys Fluids* **16**, 2308 (1973).
- PPG-150 Theory of Dielectric Function in a Magnetized Plasma", Y.C.Lee & C.S.Liu (June 1973) Thesis.
- PPG-151 Physical Interpretation of the Oscillatory Two-Stream Instability", A.Y.Wong & G.Schmidt (June 1973) Thesis.
- PPG-152 Relativistic Particle Motion in Nonuniform Electromagnetic Waves", G.Schmidt & T.Wilcox (June 1973) *Phys Rev Lett* **31**, 1380 (1973).
- PPG-153 The Ring Current and Magnetic Storms", F.V.Coroniti (July 1973) *Radio Sci* **8**, 1007 (1973).
- PPG-154 Energetic Electrons in Jupiter's Magnetosphere", F.V.Coroniti (July 1973) *Astrophys J* **27**, 261 (1974).
- PPG-155 Stably Trapped Proton Fluxes in the Jovian Magnetosphere", F.V.Coroniti, C.F.Kennel & R.M.Thorne (July 1973) *Astrophys J* **185**, 383 (1974).
- PPG-156 Absolute Raman Scattering Instabilities in an Inhomogeneous Plasma", J.F.Drake & Y.C.Lee (July 1973) *Phys Rev Lett* **31**, 1197 (1973).
- PPG-157 Growth & Saturation of the Absolute Electron Cyclotron Drift Instability", R.L.Stenzel & B.H.Nipin (July 1973) *Phys Rev Lett* **31**, 1545 (1973).
- PPG-158 Parametric Instabilities of Electromagnetic Waves in Plasmas", J.Drake, P.B.Sau, Y.C.Lee, G.Schmidt, C.S.Liu & M.N.Rosenbluth (July 1973) *Phys Fluids* **17**, 770 (1974).
- PPG-159 Nonlinear Optics of Plasmas", F.F.Chen (Aug 1973) *Survey Lect. Int Cong Waves & Instab Plas*, Innsbruck Austria, 1973. Institute for Theoretical Physics, Innsbruck pp. C1-C19.
- PPG-160 Physical Mechanisms for Laser & Plasma Heating - Parametric Instabilities", F.F.Chen (Aug 1973) in *Laser Interaction and Related Plasma Phenomena*, ed. H.J.Schwarz & H.Mora, Vol 3A, p. 291-313 (Plenum Press 1974).
- PPG-161 Trip Report - 6th Eur Conf Cont Fus & Plas Phys, July 30-Aug 4, 1973, Moscow", B.D.Fried (Aug 1973).
- PPG-162 Abstracts presented at Phil Meeting of Am Phys Soc, Div Plas Phys, Oct 31-Nov 3, 1973.
- PPG-163 Enhancement of Plasma DC Currents by Intense AC Fields", A.T.Lin & J.M.Dawson, Oct 1973. *Phys Fluids* **17**, 987 (1974).
- PPG-164 Temporal Electrostatic Instabilities in Inhomogeneous Plasmas", Y.C.Lee & P.K.Kaw (Nov 1973) *Phys Rev Lett* **32**, 135 (1974).
- PPG-165 Nonlinear Schrödinger Equation Model of Oscillating Two-Stream Instability", G.J.Morales, Y.C.Lee & R.L.White, (Dec 73) *Phys Rev Lett* **32**, 457 (1974).
- PPG-166 Backscattering Decay Processes in Electron Beam-Plasma Interactions Including Ion Dynamics", B.H.Quon, A.Y.Wong & B.H.Nipin, (Dec 1973) *Phys Rev Lett* **32**, 408 (1974).
- PPG-167 Conversion of Electromagnetic Waves to Electrostatic Waves in Inhomogeneous Plasmas", R.Stenzel, A.Y.Wong & H.C.Kim, (Dec 1973) *Phys Rev Lett* **32**, 654 (1974).
- PPG-168 Langmuir Wave Turbulence - Condensation & Collapse", Y.C.Lee, C.S.Liu & F.Nishikawa (Jan 1974) *Comp Plas Phys & Cont Fus*.
- PPG-169 The Consequences of Microcalculations on Geometrically Trapped Particles", R.M.Thorne (Jan 1974) *Rev Space Sci* **16**, 443 (1974).
- PPG-170 Linear Wave Conversion in Inhomogeneous Plasmas", D.L.Kelley & A.Baños (Mar 1974) Thesis.
- PPG-171 The Cause of Storm After Effects in the Middle Latitude D-Region Ionosphere", M.N.Spjeldvik & R.M.Thorne (Mar 1974) *J Atmos & Terr Phys*.
- PPG-172 Application of an Electromagnetic Particle Simulation Code to the Generation of Electromagnetic Radiation", A.T.Lin, J.M.Dawson & H.Ohuki (Mar 1974) *Phys Fluids* **17**, 1995 (1974).
- PPG-173 The Ponderomotive Force Exerted on a Plasma by an Intense Laser Beam", M.Maric (Mar 1974) Dissertation.
- PPG-174 What We Have Learned from the Magnetosphere", C.F.Kennel, *Comp Astrophys & Space Phys* **6**, 71 (1975).
- PPG-175 Observation of the Ponderomotive Force & Oscillating Two-Stream Instability", H.C.Kim, R.Stenzel & A.Y.Wong, (Apr 1974).
- PPG-176 Electron Beam Plasma Interaction Including Ion Dynamics", B.H.Quon (June 1974) Thesis.
- PPG-177 Linear Conversion & Parametric Instability in a Non-Uniform Plasma", H.C.Kim, R.Stenzel & A.Y.Wong, (June 1974) Thesis.
- PPG-178 Stimulated Compton Scattering of Electromagnetic Waves in Plasmas", A.T.Lin & J.M.Dawson (June 1974) *Phys Fluids* **18**, 201 (1975).
- PPG-179 Equatorial Spread F - Low Frequency Modes in a Collisional Plasma", M.E.Hudson (July 1974) Dissertation.
- PPG-180 Effect of the Ponderomotive Force in the Interaction of a Capacitor RF Field with a Nonuniform Plasma", G.J.Morales & Y.C.Lee (July 1974) *Phys Rev Lett* **33**, 1010 (1974).
- PPG-181 Deduction of Ionospheric Tidal Winds by Dynamical Simulation", J.P.Schieldge & S.V.Venkateswaran (Aug 1974) Thesis.
- PPG-182 Response of the Middle Latitude D-Region to Geomagnetic Storms", M.Spjeldvik & R.M.Thorne (Aug 1974) *J Atmos & Terr Phys*.
- PPG-183 Production of Negative Ions & Generation of Intense Neutral Beams", A.Y.Wong, J.M.Dawson & M.Cerhan (Aug 1974) *Rev Phys Lett* **25**, 579 (1974).
- PPG-184 Development of Cavities & Trapping of RF Fields", H.C.Kim, R.Stenzel & A.Y.Wong (Aug 1974) *Phys Rev Lett* **33**, 886 (1974).
- PPG-185 Albuquerque Abstracts: Papers presented at Albuquerque Meeting of Am Phys Soc Div Plas Phys, (Oct 28-31, 1974).
- PPG-186 Localized Quasi-Stationary Plasma Modes in One, Two & Three Dimensions", J.Z.Wilcox & T.J.Wilcox (Sept 1974) *Phys Rev Lett*.
- PPG-187 Denouement of Jovian Radiation Belt Theory", F.V.Coroniti (Sept 1974) *Proc Conf Magnetospheres of Earth & Jupiter*, Frascati, Italy (May 26-June 1, 1974).
- PPG-188 Is Jupiter's Magnetosphere Like a Pulsar's or Earth's?", C.F.Kennel & F.V.Coroniti (Sept 1974) *ibid.*
- PPG-189 Parametric Instability of the Sheath Plasma Resonance", R.Stenzel, H.C.Kim & A.Y.Wong (Sept 1974) *Bull Am Phys Soc* (Oct 1974), *Rad Sci* **10**, 485 (1974).
- PPG-190 Effect of Localized Electric Fields on Evolution of the Velocity Distribution Function", G.J.Morales & Y.C.Lee (Sept 74) *Phys Rev Lett* **33**, 1534 (1974).
- PPG-191 Parametric Instabilities in Plasmas", J.M.Dawson & A.T.Lin (Sept 1974) Thesis.
- PPG-192 Surmac - A Large Surface Magnetic Confinement Device", A.Y.Wong (Sept 1974) Thesis.
- PPG-193 Extraction of Energy from High Intensity Ion Beams", A.T.Forrester (Sept 1974) Presented at 2nd Symp on Ion Sources and Formation of Ion Beams - Berkeley, Calif (22-25 Oct 1974).
- PPG-194 A Large Quasi-Stationary Magnetized Plasma for Wave Studies", M.Gebelman & R.L.Stenzel (Dec 1974) *Rev Sci Instr* **46**, 1350 (1975).
- PPG-195 Electrostatic Waves Near the Lower Hybrid Frequency", R.Stenzel & M.Gebelman (Oct 1974) *Phys Rev Lett* **33**, 1575 (1975).
- PPG-196 A Coupled Micro-Cyclotron Frequency Direct Conversion System (Cuni-Cyfer)", J.T.Crow (Oct 1974) *IEEE Transactions on Plasma Science*.
- PPG-197 The Study of Comparative Magnetospheres: The Future of Space Physics", F.V.Coroniti & C.F.Kennel (Oct 1974) Presented to NASA Study Group ON "Outlook for Space", Goddard Space Flight Center (Sept 10, 1974).
- PPG-198 Application of the Fokker-Planck Numerical Method to Anisotropic & Energy-Dependent Electron Precipitation", M.Spjeldvik (Oct 1974).
- PPG-199 Self-Focusing & Filamentation of Laser Light in Plasmas", Y.C.Lee, C.S.Liu, H.H.Chen & K.Nishikawa (Oct 1974) *Proceedings of IAEA Sixth Conf on Plas Phys*, Tokyo (June 1974).
- PPG-200 Stimulated Brillouin Backscatter in the Equatorial Electrojet", D.D.Barbosa & C.F.Kennel (Nov 1974) Thesis.
- PPG-201 The Electromagnetic Interchange Mode in a Partially Ionized Collisional Plasma", M.E.Hudson & C.F.Kennel (Dec 1974) *J Plas Phys* **18**, 121 (1975).
- PPG-202 The Collisional Drift Mode in a Partially Ionized Plasma", M.E.Hudson & C.F.Kennel (Dec 1974) *J Plas Phys* **18**, 135 (1975).
- PPG-203 High Density Constraint on the Entropy Instability", M.E.Hudson & C.F.Kennel (Dec 1974) Thesis.
- PPG-204 Excitation of Zero-Frequency Instabilities & Spatial Collapse of Beam Driven Plasma Waves", A.Y.Wong & B.H.Quon (Dec 74) *Phys Rev Lett* **34**, 1499 (1975).
- PPG-205 A Recursive Numerical Method to Solve the Pure Pitch Angle Diffusion Equation, A Technical Report", M.N.Spjeldvik (Dec 1974) Thesis.
- PPG-206 The Equilibrium Radiation Belt Electron Pitch Angle Distribution & its Dependence on the Radial Diffusive Source", M.N.Spjeldvik (Jan 1975) Thesis.
- PPG-207 Optimization of Plasma Confinement with Permanent Magnet Multipoles", K.N.Leung, T.A.Samec & A.Laen (Jan 1975) Thesis.
- PPG-208 Anomalous Electron Transport & Lower-Hybrid Wave Damping", C.Chir, J.M.Dawson & H.Ohuki (1975) *Phys Fluids* **18**, 1762 (1975).
- PPG-209 Plasma Confinement by a Picket-Fence", K.N.Leung, S.Hershkowitz & T.Musser (Jan 1975) Thesis.
- PPG-210 Singular Mode Coupling & Anomalous Drag: A Theory of Plasma Turbulence with Application to the Electron Beam-Plasma Instability", J.Drake (Feb 1975) Dissertation.
- PPG-211 Nonlinear Generation of Intense Localized Electric Fields in Plasmas", G.J.Morales & Y.C.Lee (Feb 1975) Thesis.
- PPG-212 Plasma Electron Heating by Injection of Low Energy Electrons", S.Hershkowitz & K.N.Leung (Feb 1975) Thesis.
- PPG-213 Ion Confinement by Electrostatic Potential Well in Magnetic Multiple Device", Y.Nakamura, B.Quon & A.Y.Wong (Feb 1975) *Phys Lett* **53A**, 35 (1975).
- PPG-214 Scattering of Electromagnetic Waves into Plasma Oscillations via Plasma Particles", A.T.Lin & J.M.Dawson (Feb 1975) *Phys Fluids* **18**, 1342 (1975).
- PPG-215 Surface Magnetic Confinement", A.Y.Wong, Y.Nakamura & B.Quon (Mar 1975) *Phys Rev Lett* **35**, 1156 (1975).
- PPG-216 Experimental Facilities of Plasma Physics Research Laboratories at UCLA (Mar 1975) Thesis.
- PPG-217 A Modified Surmac Configuration", A.T.Forrester (Mar 1975) Thesis.
- PPG-218 Some New Ideas on Hot Beam Burners", J.M.Dawson & A.T.Lin (Apr 1975) Thesis.
- PPG-219 Plasma Heating at Frequencies Near the Lower Hybrid", C.Chu, J.M.Dawson & H.Ohuki (Apr 1975) Thesis.
- PPG-220 Unstable High-Frequency Electrostatic Modes Induced by a Loss Cone Distribution of Electrons", B.D.Fried & D.Baldwin (Apr 1975) Thesis.
- PPG-221 ICRH Heating of a Magnetized Plasma and Associated Longitudinal Cooling", J.Bussardo-Neto, J.Dawson, T.Kasamura & T.Lin (Apr 1975) Thesis.
- PPG-222 Plasma Confinement by Localized Magnetic Cusps", S.Leung (May 1975) Thesis.
- PPG-223 The Generation of Spiky Turbulence", G.J.Morales & Y.C.Lee (May 1975) Thesis.
- PPG-224 A Multipole Containment-Single Grid Extraction Ion Source", A.T.Forrester, J.T.Crow, A.A.Maslin & D.M.Gobel (May 1975) Thesis.
- PPG-225 Q-Machines - by Robert L. Motley" A book review by F.F.Chen.
- PPG-226 Plasma Leakage Through a Low β Line Cusp", S.Hershkowitz, K.N.Leung, T.Musser (May 1975) Thesis.
- PPG-227 Localized Fields & Density Perturbations in Nonlinear Lower Hybrid Waves", M.Gebelman & R.L.Stenzel (May 1975) *Phys Rev Lett* **35**, 1708 (1975).
- PPG-228 Effect of Mirroring on Convective Transport in Plasmas", T.Kasamura & J.M.Dawson. *Phys Rev Lett* **36**, 313 (1976).
- PPG-229 Parametric Excitation of Ion Fluctuations in the Relativistic Beam-Plasma Interaction", H.Schamel, Y.C.Lee, & G.J.Morales (June 1975) Thesis.
- PPG-230 UCLA Plasma Physics & Controlled Fusion Research, Presented for ERDA Program Review (July 18, 1975) B.Fried, J.Dawson, A.Y.Wong, T.Forrester & F.Chen.
- PPG-231 The Nonlinear Filamentation of Lower-Hybrid Cusps", G.J.Morales & Y.C.Lee. *Phys Rev Lett* **36**, 313 (1976).
- PPG-232 Fusion Reactor with Picket Fence Walls", S.Hershkowitz & J.Dawson. Thesis.
- PPG-233 Shock Formation in Large Amplitude Waves Due to Relativistic Electron Mass Variation", J.F.Drake, Y.C.Lee, K.Nishikawa, & N.L.Tsintsadze. *Phys Rev Lett* **36**, 190 (1976).
- PPG-234 Characteristics of a Large Volume RF Grid Discharge Plasma", R.Schumacher, S.Hershkowitz & K.Nishikawa (July 1976) Thesis.
- PPG-235 Surface Magnetic Confinement; a Review", A.Y.Wong (July 1975) Reports.
- PPG-237 St. Petersburg Abstract: Papers to be presented at St. Petersburg Meeting of Am Phys Soc Div Plas Phys (10-14 Nov 1975) Thesis.
- PPG-238 Parametric Instabilities in Strongly Relativistic, Plane Polarized Electromagnetic Waves", J.Drake, Y.C.Lee & N.L.Tsintsadze, *Phys Rev Lett* **36**, 31 (1976).

- PPG-239 Detection of Brillouin Backscattering in Underdense Plasmas", J.Turecheck & F.F.Chen.
- PPG-240 Adiabatic Invariance & Charged Particle Confinement in a Geometric Mirror", T.K.Samec, Y.C.Lee & B.D.Fried.
Phys Rev Let 35, 1763 (1975).
- PPG-241 Magnetic Fields for Surface Containment of Plasmas", A.T.Forrester & J.Busnardo-Neto. J Ap Phys
- PPG-242 Electrostatic Parametric Instabilities Arising from Relativistic Electron Mass Oscillations", A.T.Lin & N.L.Tsintsadze.
Phys Fluids
- PPG-243 Relativistic Nonlinear Plasma Waves in a Magnetic Field", C.F.Kennel & R.Pellat (Oct 1975) J Plas Phys
- PPG-244 Flux Limits on Cosmic Acceleration by Strong Spherical Pulsar Waves", E.Asseo, C.F.Kennel & R.Pellat.
Astron & Astrophys 44, No 1, 31 (1975).
- PPG-245 On the Detection of Magnetospheric Radio Bursts from Uranus & Neptune", C.F.Kennel & J.E.Maggs (Nov 1975).
- PPG-246 Parametric Instabilities with Finite Wavelength Pump", B.D.Fried, T.Ikemura, K.Nishikawa, & G.Schmidt.
- PPG-247 The Scattering of Cosmic Rays by Magnetic Bubbles", R.F.Flewelling & F.V.Coroniti.
- PPG-248 Plasma Simulation on the CHI Microprocessor System", T.Kamimura, J.M.Dawson, B.Rosen, G.J.Culler, R.D.Leevee & G.Ball.
- PPG-249 Nonlinear Interactions of Focused Resonance Cone Fields with Plasmas", R.Stenzel & W.Gekelman.
- PPG-250 The Effect of Pump Cutoff on Parametric Instabilities in an Inhomogeneous Plasma", J.VanDam & Y.C.Lee.
- PPG-251 Parametric Excitation of Ion Density Fluctuations in the Relativistic Beam-Plasma Interaction", H.Schamel, Y.C.Lee, & G.J.Morales. (Jan 1976) Phys Fluids
- PPG-252 The Spiky Turbulence Generated by a Propagating Electrostatic Wave of Finite Spatial Extent", G.J.Morales & Y.C.Lee.
(Jan 1976) Phys Fluids
- PPG-253 Departures from Theory of the Experimental Line Profile of Helium I 4471.5\AA^{0+} ", J.Turecheck.(Jan 1976)
- PPG-254 Maintenance of the Middle Latitude Nocturnal D-Layer by Energetic Electron Precipitation", W.Spjeldvik & R.Thorne
(Jan 1976)

REPRODUCTION OF THE
ORIGINAL IS FOR