

University of Dundee

Low-Attenuation Noncalcified Plaque on Coronary Computed Tomography Angiography Predicts Myocardial Infarction

Williams, Michelle C.; Kwiecinski, Jacek; Doris, Mhairi; McElhinney, Priscilla; D'Souza, Michelle S.; Cadet, Sebastien

Published in:
Circulation

DOI:
[10.1161/CIRCULATIONAHA.119.044720](https://doi.org/10.1161/CIRCULATIONAHA.119.044720)

Publication date:
2020

Licence:
CC BY

Document Version
Publisher's PDF, also known as Version of record

[Link to publication in Discovery Research Portal](#)

Citation for published version (APA):

Williams, M. C., Kwiecinski, J., Doris, M., McElhinney, P., D'Souza, M. S., Cadet, S., Adamson, P. D., Moss, A. J., Alam, S., Hunter, A., Shah, A. S. V., Mills, N. L., Pawade, T., Wang, C., Weir McCall, J., Bonnici-Mallia, M., Murrills, C., Roditi, G., van Beek, E. J. R., ... Dey, D. (2020). Low-Attenuation Noncalcified Plaque on Coronary Computed Tomography Angiography Predicts Myocardial Infarction: Results From the Multicenter SCOT-HEART Trial (Scottish Computed Tomography of the HEART). *Circulation*, 141(18), 1452-1462. <https://doi.org/10.1161/CIRCULATIONAHA.119.044720>

General rights

Copyright and moral rights for the publications made accessible in Discovery Research Portal are retained by the authors and/or other copyright owners and it is a condition of accessing publications that users recognise and abide by the legal requirements associated with these rights.

- Users may download and print one copy of any publication from Discovery Research Portal for the purpose of private study or research.
- You may not further distribute the material or use it for any profit-making activity or commercial gain.
- You may freely distribute the URL identifying the publication in the public portal.

Take down policy

If you believe that this document breaches copyright please contact us providing details, and we will remove access to the work immediately and investigate your claim.



Low-Attenuation Noncalcified Plaque on Coronary Computed Tomography Angiography Predicts Myocardial Infarction

Results From the Multicenter SCOT-HEART Trial (Scottish Computed Tomography of the HEART)

BACKGROUND: The future risk of myocardial infarction is commonly assessed using cardiovascular risk scores, coronary artery calcium score, or coronary artery stenosis severity. We assessed whether noncalcified low-attenuation plaque burden on coronary CT angiography (CCTA) might be a better predictor of the future risk of myocardial infarction.

METHODS: In a post hoc analysis of a multicenter randomized controlled trial of CCTA in patients with stable chest pain, we investigated the association between the future risk of fatal or nonfatal myocardial infarction and low-attenuation plaque burden (% plaque to vessel volume), cardiovascular risk score, coronary artery calcium score or obstructive coronary artery stenoses.

RESULTS: In 1769 patients (56% male; 58±10 years) followed up for a median 4.7 (interquartile interval, 4.0–5.7) years, low-attenuation plaque burden correlated weakly with cardiovascular risk score ($r=0.34$; $P<0.001$), strongly with coronary artery calcium score ($r=0.62$; $P<0.001$), and very strongly with the severity of luminal coronary stenosis (area stenosis, $r=0.83$; $P<0.001$). Low-attenuation plaque burden (7.5% [4.8–9.2] versus 4.1% [0–6.8]; $P<0.001$), coronary artery calcium score (336 [62–1064] versus 19 [0–217] Agatston units; $P<0.001$), and the presence of obstructive coronary artery disease (54% versus 25%; $P<0.001$) were all higher in the 41 patients who had fatal or nonfatal myocardial infarction. Low-attenuation plaque burden was the strongest predictor of myocardial infarction (adjusted hazard ratio, 1.60 (95% CI, 1.10–2.34) per doubling; $P=0.014$), irrespective of cardiovascular risk score, coronary artery calcium score, or coronary artery area stenosis. Patients with low-attenuation plaque burden greater than 4% were nearly 5 times more likely to have subsequent myocardial infarction (hazard ratio, 4.65; 95% CI, 2.06–10.5; $P<0.001$).

CONCLUSIONS: In patients presenting with stable chest pain, low-attenuation plaque burden is the strongest predictor of fatal or nonfatal myocardial infarction. These findings challenge the current perception of the supremacy of current classical risk predictors for myocardial infarction, including stenosis severity.

REGISTRATION: URL: <http://www.clinicaltrials.gov>; Unique identifier: NCT01149590.

Michelle C. Williams¹,
MBChB, PhD
et al

*Drs Dweck and Dey contributed equally (see page XXX).

The full author list is available on page XX.

Key Words: atherosclerosis ■ cardiovascular diseases ■ coronary artery disease ■ computed tomography angiography ■ myocardial infarction ■ plaque, atherosclerotic

Sources of Funding, see page XXX

© 2020 The Authors. *Circulation* is published on behalf of the American Heart Association, Inc., by Wolters Kluwer Health, Inc. This is an open access article under the terms of the [Creative Commons Attribution License](https://creativecommons.org/licenses/by/4.0/), which permits use, distribution, and reproduction in any medium, provided that the original work is properly cited.

<https://www.ahajournals.org/journal/circ>

Clinical Perspective

What Is New?

- Quantitative assessment of atherosclerotic plaque on coronary computed tomography angiography can be used to measure the burden of calcified, noncalcified, and low-attenuation plaque, as well as the total coronary plaque burden, providing important prognostic information.
- In this study, low-attenuation plaque was the strongest predictor of fatal or nonfatal myocardial infarction, exceeding other established markers including cardiovascular risk scores, computed tomography calcium scoring, and coronary artery stenoses.
- Patients with a low-attenuation plaque burden >4% were 5 times more likely to suffer a fatal or nonfatal myocardial infarction.

What Are the Clinical Implications?

- The burden of low-attenuation coronary plaque can be measured semiautomatically on standard coronary computed tomography angiography scans, with the potential for widespread clinical adoption.
- This method provides incremental prediction of myocardial infarction to standard assessments of cardiovascular risk scores, computed tomography calcium scoring or luminal stenosis severity.
- Further studies should investigate whether this novel approach can be used to guide clinical decision making and improve patient outcomes.

The current clinical paradigm of coronary artery disease is based on cardiovascular risk scores and the presence of obstructive stenoses in the coronary vasculature.^{1,2} Coronary computed tomography angiography (CCTA) has the ability to visualize both the coronary artery lumen and any surrounding atherosclerotic plaque.^{3,4} This allows additional assessment of coronary plaque burden and plaque type, both of which may improve our understanding of coronary atherosclerosis and cardiovascular risk prediction.^{5,6}

Coronary artery calcium scoring on noncontrast computed tomography (CT) using the Agatston method⁷ has been widely used as a surrogate marker of coronary plaque burden, providing powerful cardiovascular risk prediction^{8,9} that is additive to traditional cardiovascular risk scores.^{10,11} However, these macrocalcified plaques are generally considered a more stable form of atherosclerosis and, hence, relatively unlikely to rupture and cause myocardial infarction directly.¹² There is considerable interest in quantifying the burden of less stable plaque components that might more directly contribute to events.

Histological plaque characteristics that have been associated with plaque rupture and myocardial infarction include inflammation, microcalcification, a thin fibrous cap, and a large lipid-rich necrotic core.^{13–15} On CCTA, a lipid-rich necrotic core can be detected as low-attenuation noncalcified plaque.¹⁶ We have recently demonstrated that visually identifying such plaque may be of benefit in predicting the future risk of myocardial infarction.¹⁷ However, such qualitative assessments are relatively subjective, time consuming, and nonquantitative. Recent developments now allow the reproducible and semiautomatic quantification of the burden of calcified, noncalcified, and low-attenuation plaque across the coronary arteries on contrast CT angiography.^{18,19}

This study aimed to investigate whether quantification of CCTA-defined low-attenuation plaque improves the prediction of fatal or nonfatal myocardial infarction compared with cardiovascular risk scores, Agatston coronary artery calcium scoring, and the severity of obstructive coronary artery disease in stable patients with chest pain undergoing CCTA.

METHODS

Study Design

The data supporting the findings of this study are available from the corresponding author for checking the reproducibility of the study results. The SCOT-HEART multicenter randomized controlled trial (Scottish Computed Tomography of the HEART) assessed the use of CCTA in patients with suspected angina attributable to coronary artery disease (ClinicalTrials.gov. Unique identifier: NCT01149590).²⁰ The study was approved by the local ethics committee and written informed consent was provided by all participants. The primary results have been published previously.^{21–23} Patients attending cardiology outpatient clinics were randomized to standard care or standard care plus CT. Of the 4146 trial participants, 2073 were randomized to undergo CT. Of these, 1778 underwent CT and 1769 scans were available and of suitable quality for analysis in this substudy. Cardiovascular risk was calculated using the ASSIGN (Assessing cardiovascular risk using SIGN guidelines) cardiovascular risk score.²⁴ This is a well-validated risk score based on the Framingham risk score and has been calibrated to the Scottish population.

CT Imaging

Participants underwent both noncontrast electrocardiogram-gated CT for calcium scoring and contrast-enhanced electrocardiogram-gated CCTA.²⁰ Imaging was performed at one of three sites using either 64- or 320-detector row scanners (Brilliance 64, Philips Medical Systems, Netherlands; Biograph mCT, Siemens, Germany; Aquilion ONE, Toshiba Medical Systems, Japan). Tube current, voltage, and volume of iodine-based contrast were adjusted based on body mass index.

Visual Assessment of CT

Coronary artery calcium score and coronary artery stenosis assessments were obtained from the SCOT-HEART

database. Coronary artery calcium score was assessed using the Agatston scoring method, as described previously.^{7,20} Coronary artery stenoses were visually assessed on a 15-segment basis by trained observers with excellent inter- and intraobserver variability, as described previously.²⁵ In brief, the luminal area stenosis was here visually classified as normal, nonobstructive (<50% in left main stem or <70% in other segments), and obstructive (≥50% in left main stem or ≥70% in other segments). Obstructive coronary artery disease was defined as the presence of 1 or more major epicardial vessel with an obstructive stenosis.

Quantitative Assessment of CT

Quantitative assessment of atherosclerotic plaque subtypes was performed using standardized semiautomatic software (Autoplaque, Version 2.5, Cedars-Sinai Medical Center) by 1 of 4 trained observers. Excellent interobserver, intraobserver, and interscan agreement has previously been established for this technique (Spearman $r=0.87-0.99$).^{18,26} Quantitative analysis was performed for all patients who had 1 or more segments of nonobstructive or obstructive disease or a coronary artery calcium score greater than 0. For patients with normal coronary arteries, the plaque volumes and burden were set to 0.

Coronary artery centerlines were extracted using a semi-automated method. A circular region of interest was placed in the proximal aorta to define the normal reference blood pool attenuation. The proximal and distal aspects of coronary artery segments with atherosclerotic plaque were manually defined. Scan-specific thresholds for plaque constituents were generated, as described previously.²⁷ Vessel lumen, wall, and plaque constituents were automatically identified, with manual adjustment performed as required (Figure 1). Automatic quantification of area stenosis at the narrowest point of the segmented lumen was performed.

Plaque volumes (in mm³) were measured for the following plaque subtypes: total plaque, calcified plaque, noncalcified plaque and low-attenuation plaque (defined by an attenuation of <30 Hounsfield units [HU]).¹⁹ Plaque burden (as a percentage) was calculated for each of the total plaque, noncalcified plaque, low-attenuation plaque, and calcified plaque, by dividing the relevant plaque volume by the vessel volume of the region assessed, multiplying by 100, and summing on a per patient basis.¹⁹ Plaque burden was used as our primary assessment for each plaque type.

Outcomes

The primary event for this substudy was the occurrence of fatal or nonfatal myocardial infarction. Information on cardiovascular events and mortality was obtained from the electronic Data Research and Innovation Service of the National Health Services Scotland and were confirmed by review of the patient's electronic health records where required. Follow-up was administratively censored as of January 1, 2018, for patients without an event. Scottish health record linkage has previously been shown to have an excellent correlation (>95%) for accurately identifying clinical events recorded and adjudicated as part of a regulated clinical trial.²⁸

Statistical Analysis

Statistical analysis was performed using R, version 3.5.0 (R Foundation for Statistical Computing, Vienna, Austria). Quantitative data are presented as mean and standard deviation or, if not normally distributed, as median and interquartile interval (IQI). Statistical significance was assessed using Pearson chi-square test, Fisher exact test, Student *t* test, Kruskal-Wallis test, or Mann-Whitney *U* test as appropriate. Correlations for variables that were not normally

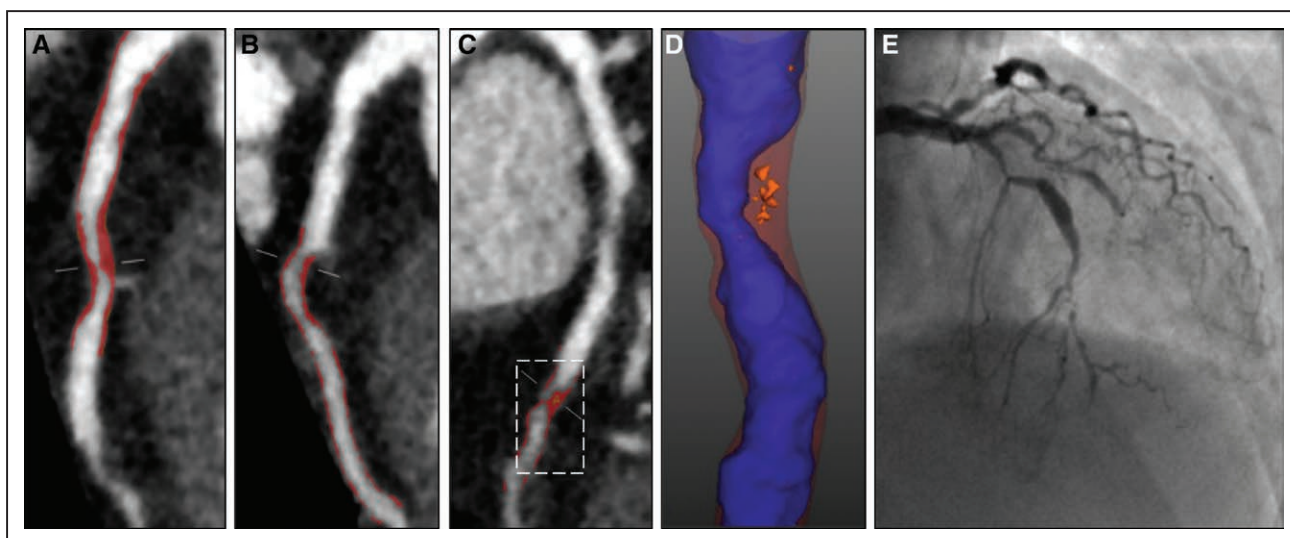


Figure 1. Coronary CT angiography (CCTA) plaque analysis.

Images from a 67-year-old female who presented with atypical chest pain. She was a nonsmoker with a history of hypertension, a previous transient ischemic attack, and normal exercise tolerance test. Her 10-year cardiovascular risk score was 14%, coronary artery calcium score was 62 Agatston units, and coronary computed tomography angiography identified obstructive disease in the left anterior descending (LAD) and first diagonal. Curved planar reformations show (A) proximal LAD, (B) first diagonal, and (C) mid-LAD. Red overlay illustrates noncalcified plaque in the individual segment only, but all plaque in each vessel was analyzed for the per patient assessment. D, Shows a zoomed in view of the mid LAD plaque with blue lumen, red noncalcified plaque and orange low-attenuation plaque. She subsequently presented with acute myocardial infarction and underwent invasive coronary angiography (E).

distributed were assessed using Spearman rank order correlation. Correlation coefficients of <0.2 were regarded as very weak, 0.2 to <0.40 as weak, 0.40 to <0.60 as moderate, 0.6 to <0.80 as strong, and 0.8 to 1 as very strong. Outcome data were analyzed using Cox proportional hazards regression and presented graphically using cumulative incidence plots using the Kaplan–Meier method. Hazard ratios (HR) and 95% CI were calculated from the Cox model. Deaths not classified as coronary heart disease deaths were censored for both the Cox regression analysis and the cumulative incidence plots. Univariable analysis was performed for all quantified plaque parameters. Multivariable models were constructed including the individual plaque parameters and Agatston coronary artery calcium score. Coronary artery calcium score and plaque burdens were log transformed for analysis. Receiver operating characteristic (ROC) curve analysis was performed to identify the optimum cut-off for low-attenuation plaque burden to identify patients at increased risk of coronary heart disease death or nonfatal myocardial infarction using Youden J statistic. A statistically significant difference was defined as a 2-sided P value <0.05 . The imaging data that support the findings of this study are available from the corresponding author upon reasonable request.

RESULTS

Patient Population

This substudy included all 1769 patients where CCTA images were of suitable image quality for analysis. The mean age of these patients was 58 ± 10 years, 56% were male, and the mean 10-year cardiovascular risk score was $18 \pm 11\%$ (Table 1). The median coronary artery calcium score was 21 (IQR, 0–230) Agatston units. Normal coronary arteries were identified in 646 patients (37%), nonobstructive coronary artery disease in 671 patients (38%) and obstructive coronary artery disease in 452 patients (26%). The median total plaque burden for all patients (Table 2) was 39% (IQR, 0–49), with noncalcified plaque burden 36% (IQR, 0–46), low-attenuation plaque burden 4.2% (IQR, 0–6.9), and calcified plaque burden 0.4% (IQR, 0–2.8).

Cardiovascular Risk Score and Plaque Type

Compared with those with a cardiovascular risk score ≤ 10 , patients with a cardiovascular risk score >10 had an increase in all subtypes of plaque burden ($P < 0.001$ for all) (Table 2). Similarly, patients with a cardiovascular risk score >20 had a higher low-attenuation plaque burden, total plaque burden, and calcified plaque than patients with a score ≤ 20 . There was a weak correlation between cardiovascular risk scores and total plaque burden ($r = 0.34$; $P < 0.001$) (Figure 2), and weak to moderate correlations with plaque burden subtypes including low-attenuation plaque ($r = 0.34$; $P < 0.001$) (Figure 2 and 3).

Table 1. Study Population

	All Participants
Number	1769
Male, n (%)	997 (56)
Age, y*	58 ± 10
Body mass index, kg/m ² *	30 ± 6
Atrial fibrillation, n (%)	34 (2)
Previous coronary heart disease, n (%)	178 (10)
Previous cerebrovascular disease, n (%)	79 (4)
Previous peripheral vascular disease, n (%)	31 (2)
Smoking status, n (%)	
Current smoker	330 (19)
Ex-smoker	593 (34)
Nonsmoker	845 (48)
Hypertension, n (%)	608 (35)
Diabetes mellitus, n (%)	196 (11)
Family history, n (%)	765 (44)
Total cholesterol, mg/dL*	192 ± 73
Anginal symptoms, n (%)	
Typical angina	654 (37)
Atypical angina	432 (24)
Nonanginal	683 (39)
Cardiovascular risk score*	18 ± 11
CACS (Agatston units)†	21 [0–230]
CCTA, n (%)	
Normal	646 (37)
Nonobstructive	671 (38)
Obstructive	452 (26)

*Mean \pm SD.

†Median [interquartile interval].

CACS indicates Agatston coronary artery calcium score; and CCTA, coronary computed tomography angiography.

Coronary Artery Calcium Score and Plaque Type

A very strong correlation was observed between the Agatston coronary artery calcium score and the calcified plaque burden quantified on CCTA ($r = 0.91$; $P < 0.001$) (Figure 2). Moderate to strong correlations were observed between the Agatston coronary artery calcium score and other plaque subtypes, including the total plaque burden ($r = 0.67$; $P < 0.001$), noncalcified plaque burden ($r = 0.58$; $P < 0.001$), and low-attenuation plaque burden ($r = 0.62$; $P < 0.001$) (Figure 3). Low-attenuation plaque burden demonstrated very strong correlations with the total plaque burden ($r = 0.87$; $P < 0.001$) and noncalcified plaque burden ($r = 0.88$; $P < 0.001$), and a moderate to strong correlation with the calcified plaque burden ($r = 0.63$; $P < 0.001$). Patients with an Agatston coronary artery calcium score greater than 400 had a higher total plaque burden

Table 2. Quantitative Plaque Burden in Patients With Different Cardiovascular Risk Scores, Coronary Artery Calcification, and CCTA Findings

	Plaque Burden Parameter (%)			
	Total Plaque Burden	Noncalcified Plaque burden	Low-Attenuation Plaque Burden	Calcified Plaque Burden
All patients*	39 [0–49]	36 [0–46]	4.2 [0–6.9]	0.4 [0–2.8]
10-year cardiovascular risk score (%)*				
≤10	0 [0–37]	0 [0–35]	0 [0–3.9]	0 [0–0.1]
>10–20	41 [0–51]	38 [0–48]	4.9 [0–7.4]	0.7 [0–2.8]
>20	44 [33–51]	40 [30–46]	5.4 [2.8–7.4]	1.6 [0–5.1]
<i>P</i> value†	<0.001	<0.001	<0.001	<0.001
CACs (Agatston units)*				
0–99	0 [0–44]	0 [0–42]	0 [0–5.6]	0 [0–0.4]
100–400	45 [39–51]	43 [36–48]	6.0 [4.2–8.4]	2.5 [1.6–3.9]
>400	49 [44–55]	42 [36–47]	6.4 [4.7–8.0]	6.9 [4.5–10.7]
<i>P</i> value‡	<0.001	0.46	0.44	<0.001
CCTA*				
Nonobstructive disease	44 [38–51]	42 [35–49]	5.7 [4.0–7.5]	1.1 [0.3–3.0]
Obstructive disease	50 [44–56]	45 [39–51]	7.0 [5.4–9.0]	3.8 [1.6–7.6]
<i>P</i> value	<0.001	<0.001	<0.001	<0.001

*Median [interquartile interval].

†*P* value for patients with a cardiovascular risk score >20% versus other patients.‡ *P* value for patient with CACS >400 versus CACS 100–400 Agatston units.

CACs indicates Agatston coronary artery calcium score; and CCTA, coronary computed tomography angiography.

and calcified plaque burden than patients with a score less than 400 ($P<0.001$). The low-attenuation plaque burden was numerically higher but this was not statistically significant (Table 2).

Coronary Artery Stenosis and Plaque Type

Patients with visually assessed obstructive coronary artery disease had higher total plaque burden, calcified plaque burden, noncalcified plaque burden and low-attenuation plaque burden compared with patients with nonobstructive coronary artery disease (Table 2). Moreover, for patients with 1-, 2-, and 3-vessel disease, there was a stepwise increase in the total plaque burden, low-attenuation plaque burden and calcified plaque burden (Table I in the online-only Data Supplement).

Clinical Events

Over a median follow-up of 4.7 years (IQR, 4.0–5.7), the primary event point of fatal or nonfatal myocardial infarction occurred in 41 patients (2.3%). Patients who suffered a fatal or nonfatal myocardial infarction had higher total plaque, noncalcified plaque, low-attenuation plaque and calcified plaque burden (Table 3; Figure 4). In univariable analysis, the total plaque, noncalcified plaque, low-attenuation plaque and calcified plaque burdens were all associated with an increased

risk of fatal or nonfatal myocardial infarction (Table 4; Table II in the online-only Data Supplement). In multivariable analysis, the low-attenuation plaque burden was the strongest predictor of the primary event (HR, 1.60 [95% CI, 1.10–2.34] per doubling; $P=0.014$), adding incremental value to the cardiovascular risk score (HR, 1.00 [95% CI, 0.98–1.03]; $P=0.821$), coronary artery calcium score (HR, 1.13 [95% CI, 1.01–1.27]; $P=0.041$), and the presence of visually observed obstructive coronary artery disease (HR, 1.20 [95% CI, 0.58–2.48]; $P=0.621$) (Table 4; Table III in the online-only Data Supplement).

Receiver operating characteristic curve analysis identified that the optimum threshold for low-attenuation plaque burden was 4%. Patients with a low-attenuation plaque burden above this threshold were nearly 5 times more likely to suffer a fatal or nonfatal myocardial infarction (HR, 4.65 [95% CI, 2.06–10.5]; $P<0.001$) (Figure 5). This discriminatory ability was particularly important in patients with nonobstructive coronary artery disease (Table IV and Figures 1 and 2 in the online-only Data Supplement). Patients with nonobstructive coronary artery disease and low-attenuation plaque burden >4% were more than 6 times more likely to suffer a fatal or nonfatal myocardial infarction compared with patients with normal coronary arteries (HR, 6.61 [95% CI, 1.91 to 22.82]; $P=0.003$), but patients with nonobstructive disease and a low-attenuation plaque burden

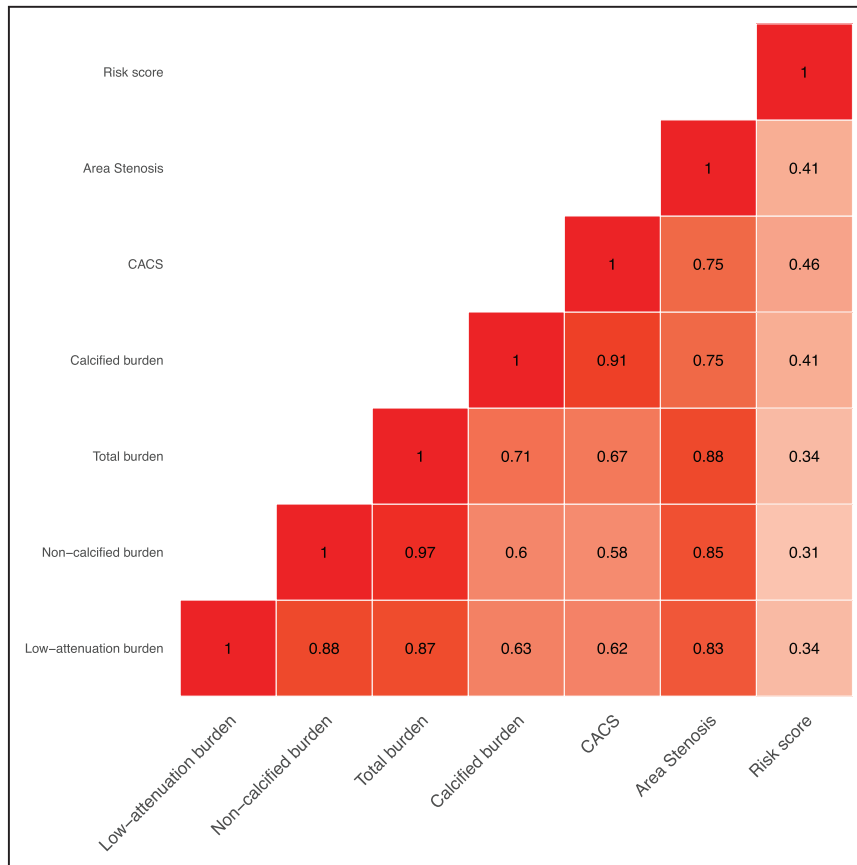


Figure 2. Correlations between plaque burden subtypes, calcium score, coronary stenosis and cardiovascular risk score.

Correlations between plaque burden subtypes and Agatston coronary artery calcium score, coronary artery area stenosis and ASSIGN (Assessing cardiovascular risk using SIGN guidelines) cardiovascular risk score. $P < 0.001$ for all. CACS indicates Agatston coronary artery calcium score.

$\leq 4\%$ were not at a significantly increased risk (HR, 1.33 [95% CI, 0.14–12.77]; $P=0.806$).

DISCUSSION

In this large multicenter study, we have shown that quantitative assessment of atherosclerotic plaque can identify patients who are at an increased risk of coronary events. Low-attenuation plaque burden was the strongest predictor of outcome, with patients with a low-attenuation plaque burden $>4\%$ 5 times more likely to suffer a fatal or nonfatal myocardial infarction. Despite collinearity and strong correlations, this association remained irrespective of cardiovascular risk score, Agatston coronary artery calcium score or the presence of obstructive coronary artery disease. We conclude that low-attenuation plaque burden is the best predictor of clinical outcome, and that this underscores the dominant nature of plaque burden and plaque type in the pathogenesis of myocardial infarction.

Markers of plaque burden provide powerful prediction of cardiovascular events on the basis that the more plaque a patient has, the more likely an individual lesion will rupture and cause myocardial infarction. However, plaque type is also important, with plaque rupture most commonly associated with inflamed plaques with a thin fibrous cap and large necrotic core.¹⁴ The latter can be detected on CT as low-attenuation plaque, although

it has previously been challenging to quantify the burden of low-attenuation plaque across the coronary vasculature. This is now possible in a rapid and robust fashion with semiautomatic software. In this study, we have demonstrated that low-attenuation plaque provides more powerful prediction of clinical events than cardiovascular risk score, Agatston coronary artery calcium scoring, or the presence and severity of obstructive coronary artery disease. Indeed, our data would suggest that these other markers are associated with clinical events by virtue of their association with low-attenuation plaque burden, and that it is preferable to measure low-attenuation plaque directly for optimum patient risk stratification.

This study provides further evidence of the limitations of cardiovascular risk scores in the prediction of cardiac events. Cardiovascular risk scores are widely used in clinical practice to assess the requirement for preventative therapy,²⁹ and play a central role in the management pathways for patients with suspected coronary artery disease, in both US and European guidelines.^{1,2} In this study, cardiovascular risk score demonstrated only moderate correlation with low-attenuation plaque burden. Such scores are therefore limited in their ability to identify patients with the atherosclerotic plaque at risk of subsequent events, perhaps explaining their poor prognostic performance here and in other studies.³⁰

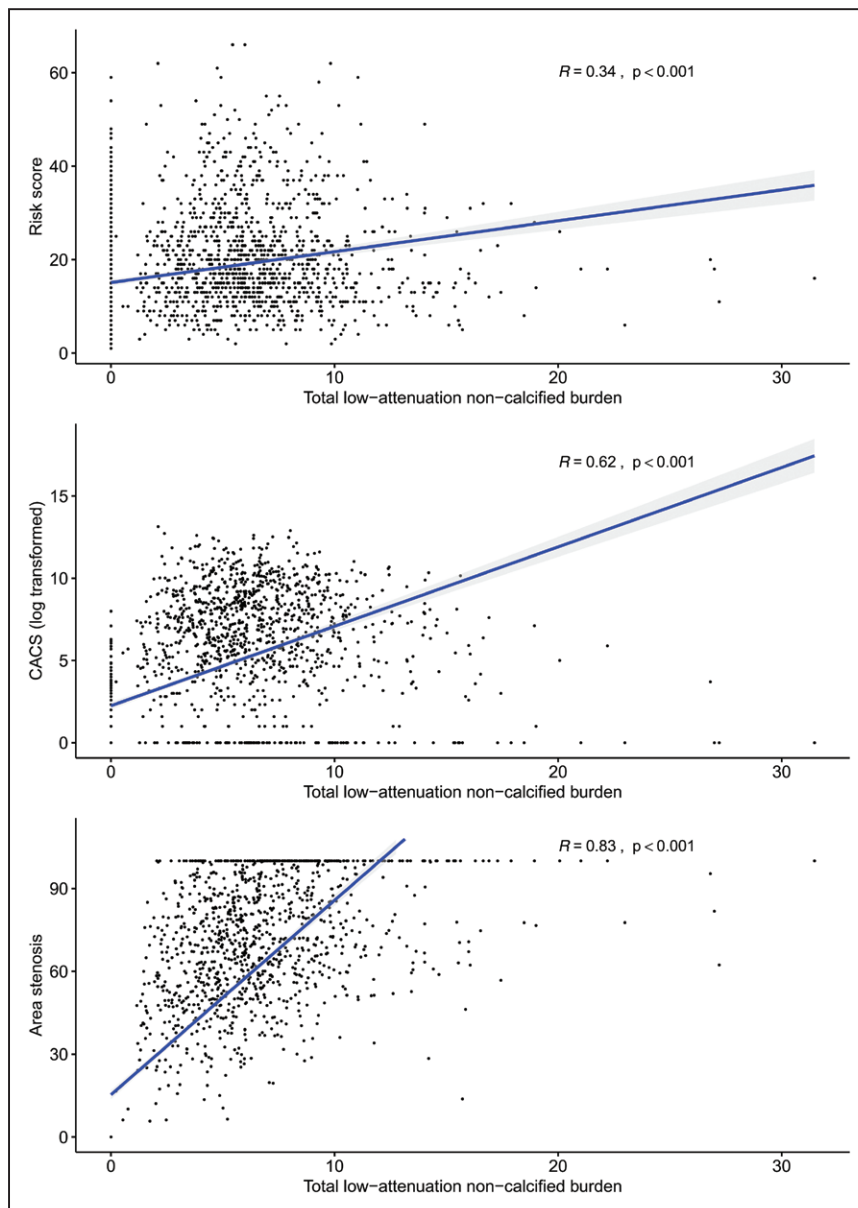


Figure 3. Correlations between low-attenuation plaque burden, cardiovascular risk score, calcium score and coronary stenosis. Correlations between total low-attenuation plaque burden and 10-year cardiovascular risk score, Agatston coronary artery calcium score, and coronary artery area stenosis. CACS indicates Agatston coronary artery calcium score.

Coronary artery calcification is widely used as a marker of coronary artery disease and is associated with an increased risk of subsequent cardiac events.^{9,17,31} In this study, we have shown that quantification of calcification on CCTA correlates well with the Agatston coronary artery calcium score performed on noncontrast CT, highlighting that there is limited value to additional

noncontrast imaging when CCTA is performed. However, similar to the cardiovascular risk score, assessment of coronary artery calcification only provides risk by association, quantifying stable calcified plaques rather than the disease that causes subsequent cardiac events. When the Agatston coronary artery calcium score was first established, CCTA had not been developed for routine clinical use, and the calcium score was a useful surrogate for the presence of coronary artery disease. Indeed, we have previously reported that it is a strong predictor of outcome, outperforming qualitative assessments of adverse coronary artery plaque.¹⁷ However, quantitative CCTA analysis now provides assessment of coronary plaque burden, with the added ability of more accurately quantifying the plaque type most closely associated with events.

Table 3. Quantitative Assessment of Plaque in Patients With and Without a Primary Event of Coronary Heart Disease Death or Nonfatal Myocardial Infarction

	No event	Event	P Value
Plaque burden (%)*	39 [0–49]	50 [43–54]	<0.001
Noncalcified plaque burden (%)*	35 [0–45]	42 [37–49]	<0.001
Low-attenuation plaque burden (%)*	4.1 [0–6.8]	7.5 [4.8–9.2]	<0.001
Calcified plaque burden (%)*	0.4 [0–2.7]	3.2 [1.4–8.2]	<0.001

*Median [interquartile interval].

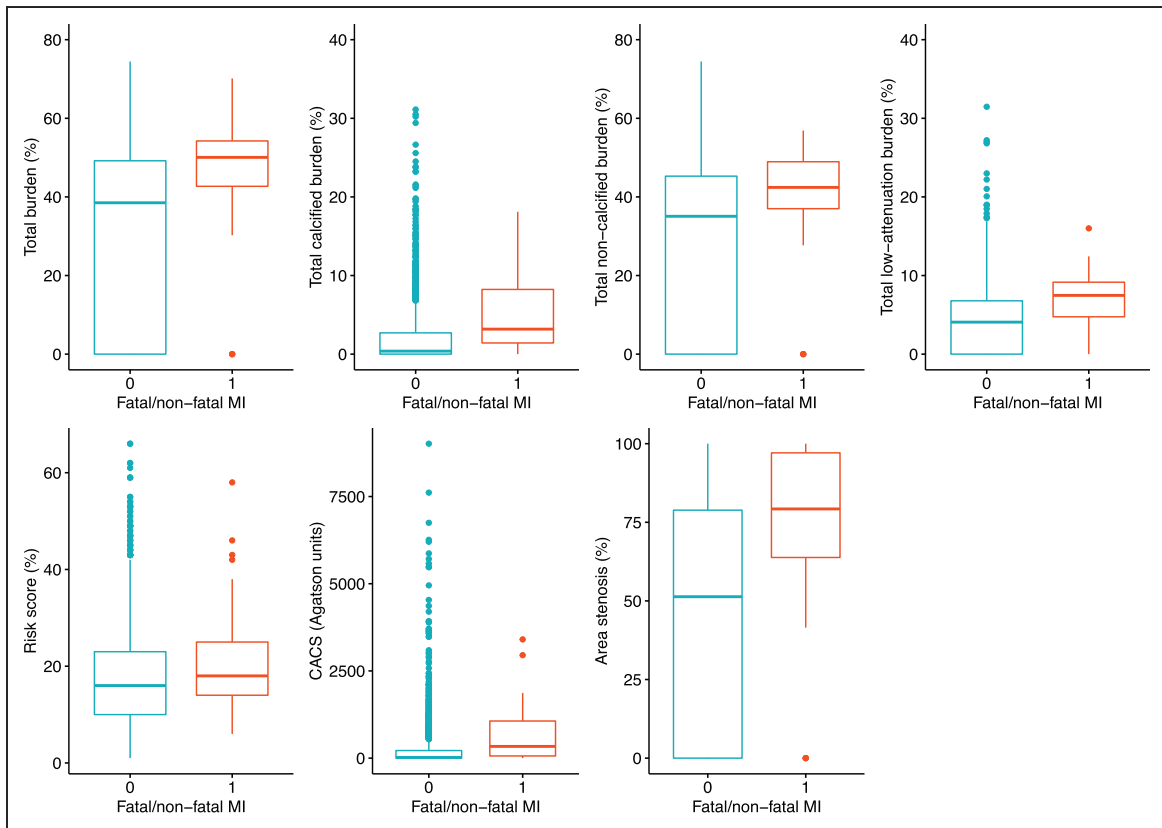


Figure 4. Plaque burden and fatal or nonfatal myocardial infarction.

Quantitative assessment of atherosclerotic plaque burden in patients with and without a primary event of fatal or nonfatal myocardial infarction ($P \leq 0.01$ for all). CACS indicates Agatston coronary artery calcium score, and MI, myocardial infarction.

The identification of obstructive coronary artery stenosis is central to the diagnosis and management approach of patients presenting with chest pain. It is an established and powerful predictor of an increased risk of subsequent cardiac events which is embedded within clinical practice. It is a central tenet of cardiology that this risk increases with the number of vessels involved.^{5,32} However, most coronary events occur in segments that do not have

obstructive stenoses on preceding imaging,^{33–35} and percutaneous coronary intervention on coronary artery stenoses does not prevent or reduce subsequent rates of myocardial infarction.³⁶ This study provides support for the hypothesis that obstructive disease is indirectly associated with subsequent outcomes because of its correlation with plaque burden. Indeed, we observed a stepwise increased in plaque burden, including low-attenuation plaque, on moving from patients with nonobstructive coronary artery disease to those with 1-, 2- and 3-vessel obstructive coronary artery disease. Therefore, similar to the cardiovascular risk scores and calcium scoring, we propose that the predictive ability of obstructive coronary artery stenoses is, at least in part, attributable to its association with the low-attenuation plaque.

Quantitative assessment of plaque can provide standardized assessment with good observer variability and correlation with intravascular ultrasound.²⁷ Previous studies have identified that CCTA plaque burden is associated with subsequent outcomes, including the ICONIC (Incident Coronary Syndromes Identified by Computed Tomography) substudy of the CONFIRM (Coronary CT Angiography Evaluation for Clinical Outcomes: An International Multicenter) registry³⁷ and the PARADIGM (Progression of Atherosclerotic Plaque

Table 4. Univariable and Multivariable Analysis for Plaque Subtypes and the Primary End Point of Fatal or Nonfatal Myocardial Infarction

	Univariable		Multivariable *	
	Hazard Ratio†	P Value	Hazard Ratio†	P Value
Plaque burden‡	1.46 (1.18–1.82)	<0.001	1.23 (0.95–1.60)	0.119
Noncalcified plaque burden‡	1.43 (1.17–1.76)	<0.001	1.21 (0.94–1.56)	0.140
Low-attenuation plaque burden‡	1.91 (1.41–2.57)	<0.001	1.60 (1.10–2.34)	0.014
Calcified plaque burden‡	1.75 (1.42–2.16)	<0.001	1.42 (0.90–2.25)	0.133

*Multivariable analysis including the individual quantitative plaque measures, Agatston coronary artery calcium score, the presence of visually observed obstructive coronary artery disease, and cardiovascular risk score. Full model results are presented in Table III in the online-only Data Supplement.

†Hazard ratio (95% CI).

‡ Per doubling.

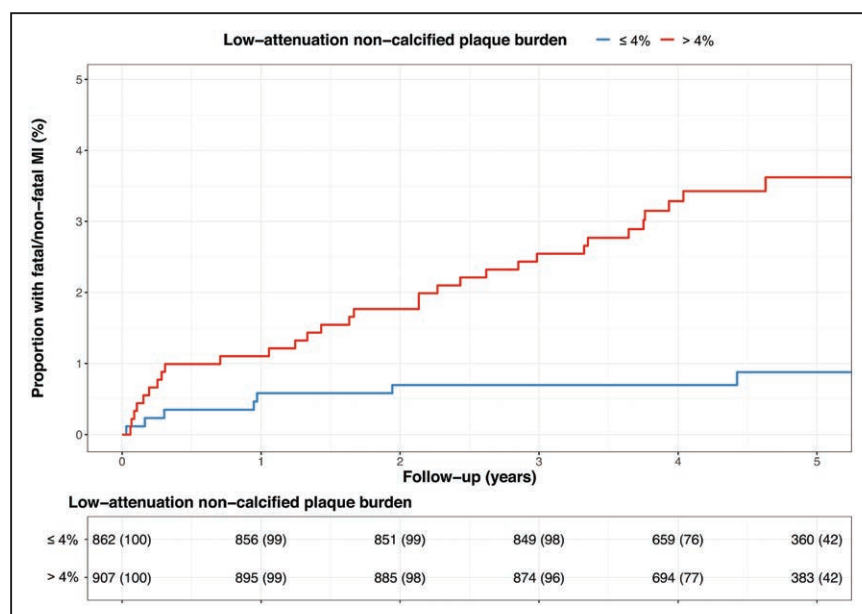


Figure 5. Low-attenuation plaque burden and fatal or nonfatal myocardial infarction. Cumulative incidence of fatal or nonfatal myocardial infarction in patients with and without a low-attenuation plaque burden greater than 4%. MI indicates myocardial infarction.

Determined by Computed Tomographic Angiography Imaging) registry.³⁸ Low-attenuation plaque in particular has been associated with an increased risk.^{39–41} This is in keeping with our data and the concept that plaques with large necrotic cores are more prone to rupture than more stable calcified plaque subtypes.

This study has several limitations. It used a single technique to analyze plaque. Further investigation and external validation are required for this to become accepted and part of clinical practice and these should also incorporate analysis from more than one type of scanner or reconstruction algorithm. Although several parts of the analysis performed in this study were automated, the assessment of plaque type across the entire coronary tree takes 20 to 30 minutes.⁴¹ Future software incorporating further automation and machine learning techniques, would therefore help facilitate more widespread clinical adoption. In addition, further quantified parameters such as pericoronary adipose tissue attenuation, radiomic analyses, or positron emission tomography features may provide additional information on cardiovascular risk in addition to the plaque parameters assessed in this study.^{12,42,43} Finally, in the SCOT-HEART trial, treatment was instigated based on CCTA findings, and we cannot exclude the possibility that these treatment decisions may have influenced our findings. However, we would suggest that such interventions are likely to make our estimates of the association and effect sizes conservative.

In conclusion, this large multicenter study shows that an increased burden of low-attenuation plaque is the principal predictor of increased coronary events, above

and beyond other established classic markers of cardiovascular risk, including coronary artery stenosis severity.

ARTICLE INFORMATION

Received November 3, 2019; accepted January 10, 2020.

Guest Editor for this article was Steven Lloyd, MD, PhD.

The online-only Data Supplement is available with this article at <https://www.ahajournals.org/doi/suppl/10.1161/circulationaha.119.044720>.

Authors

Michelle C. Williams, MBChB, PhD; Jacek Kwicinski, MD; Mhairi Doris, MBChB; Priscilla McElhinney, BSc; Michelle S. D'Souza, MBChB; Sebastien Cadet, MS; Philip D. Adamson, MD, PhD; Alastair J. Moss, MD; Shirjel Alam, MD, PhD; Amanda Hunter, MBChB, PhD; Anoop S.V. Shah, MBChB, PhD; Nicholas L. Mills, MBChB, PhD; Tania Pawade, MD, PhD; Chengjia Wang, PhD; Jonathan Weir McCall, MBChB, PhD; Michael Bonnici-Mallia, MD; Christopher Murrills, MD; Giles Roditi, MBChB; Edwin J. R. van Beek, MD, PhD; Leslee J. Shaw, MD, PhD; Edward D. Nicol, MD; Daniel S. Berman, MD; Piotr J. Slomka, PhD; David E. Newby, MD, PhD; Marc R. Dweck, MBChB, PhD*; Damini Dey, PhD

Correspondence

Michelle C. Williams, MBChB, PhD, University/BHF Centre for Cardiovascular Science, University of Edinburgh, Chancellor's Building, SU305, 49 Little France Crescent, Edinburgh, United Kingdom EH16 4SA. Email michelle.williams@ed.ac.uk

Affiliations

University/BHF Centre for Cardiovascular Science (M.C.W., J.K., M.D., M.S.D'S., P.D.A., A.J.M., S.A., A.H., A.S.V.S., N.L.M., T.P., C.W., E.J.R.v.B., D.E.N., M.R.D.), and Edinburgh Imaging Facility QMRI (M.C.W., E.J.R.v.B., D.E.N., M.R.D.), University of Edinburgh, United Kingdom. Department of Interventional Cardiology and Angiology, Institute of Cardiology, Warsaw, Poland (J.K.). Cedars-Sinai Medical Centre, Los Angeles, CA (P.M., S.C., P.J.S., D.S.B., D.D.). University of Cambridge, United Kingdom (J.W.M.). Department of Radiology, Ninewells Hospital, Dundee, United Kingdom (M.B-M., C.M.). Institute of Clinical Sciences, University of Glasgow, United Kingdom (G.R.). Weill Cornell Medical College, New York, NY (L.J.S.). Royal Brompton and Harefield NHS Foundation Trust Departments of Cardiology and Radiology, and the National Heart and Lung Institute, Faculty of Medicine, Imperial College, London, United Kingdom (E.D.N.). Christchurch Heart Institute, University of Otago, Christchurch, New Zealand (P.D.A.).

Sources of Funding

This trial was funded by The Chief Scientist Office of the Scottish Government Health and Social Care Directorates (CZH/4/588), with supplementary awards from Edinburgh and Lothian's Health Foundation Trust and the Heart Diseases Research Fund. M.C.W. (FS/11/014 and CH/09/002), D.E.N. (CH/09/002, RG/16/10/32375, RE/18/5/34216), and M.R.D. (FS/14/78/31020) are supported by the British Heart Foundation. M.C.W. was supported by The Chief Scientist Office of the Scottish Government Health (PCL/17/04). D.E.N. is the recipient of a Wellcome Trust Senior Investigator Award (WT103782AIA). E.J.R.v.B. is supported by the Scottish Imaging Network: A Platform of Scientific Excellence (SINAPSE). P.D.A. is supported by a National Heart Foundation of New Zealand Senior Fellowship (1844). M.R.D. is supported by the Sir Jules Thorn Biomedical Research Award 2015 (15/JTA). The Royal Bank of Scotland supported the provision of 320-multidetector CT for NHS Lothian and the University of Edinburgh. The Edinburgh Imaging facility QMRI (Edinburgh) is supported by the National Health Service Research Scotland (NRS) through National Health Service Lothian Health Board. The Clinical Research Facility Glasgow and Clinical Research Facility Tayside are supported by National Health Service Research Scotland (NRS). P.M. and D.D. are supported by National Institute of Health/National Heart, Lung, and Blood Institute grant 1R01HL133616. This work is supported in part by National Institute of Health/National Heart, Lung, and Blood Institute grant 1R01HL133616 and the Miriam and Sheldon G. Adelson Medical Research Foundation.

Disclosures

D.D., S.C., P.S., and D.S.B. received software royalties from Cedars-Sinai Medical Center. D.D., P.S., and D.S.B. hold a patent (US8885905B2 in U.S. and WO patent WO2011069120A1, Method and System for Plaque Characterization).

REFERENCES

- Knuuti J, Wijns W, Saraste A, Capodanno D, Barbato E, Funck-Brentano C, Prescott E, Storey RF, Deaton C, Cuisset T, et al. 2019 ESC Guidelines for the diagnosis and management of chronic coronary syndromes: the Task Force for the diagnosis and management of chronic coronary syndromes of the European Society of Cardiology (ESC). *European Heart Journal*. 2019. <https://doi.org/10.1093/eurheartj/ehz425>
- Fihn SD, Blankenship JC, Alexander KP, Bittl JA, Byrne JG, Fletcher BJ, Fonarow GC, Lange RA, Levine GN, Maddox TM, et al. 2014 ACC/AHA/AATS/PCNA/SCAI/STS focused update of the guideline for the diagnosis and management of patients with stable ischemic heart disease: a report of the American College of Cardiology/American Heart Association Task Force on Practice Guidelines, and the American Association for Thoracic Surgery, Preventive Cardiovascular Nurses Association, Society for Cardiovascular Angiography and Interventions, and Society of Thoracic Surgeons. *Circulation*. 2014;130:1749–1767. doi: 10.1161/CIR.0000000000000995
- Miller JM, Rochitte CE, Dewey M, Arbab-Zadeh A, Niinuma H, Gottlieb I, Paul N, Clouse ME, Shapiro EP, Hoe J, et al. Diagnostic performance of coronary angiography by 64-row CT. *N Engl J Med*. 2008;359:2324–2336. doi: 10.1056/NEJMoa0806576
- Motoyama S, Sarai M, Harigaya H, Anno H, Inoue K, Hara T, Naruse H, Ishii J, Hishida H, Wong ND, et al. Computed tomographic angiography characteristics of atherosclerotic plaques subsequently resulting in acute coronary syndrome. *J Am Coll Cardiol*. 2009;54:49–57. doi: 10.1016/j.jacc.2009.02.068
- Min JK, Shaw LJ, Devereux RB, Okin PM, Weinsaft JW, Russo DJ, Lippolis NJ, Berman DS, Callister TQ. Prognostic value of multidetector coronary computed tomographic angiography for prediction of all-cause mortality. *J Am Coll Cardiol*. 2007;50:1161–1170. doi: 10.1016/j.jacc.2007.03.067
- Motoyama S, Ito H, Sarai M, Kondo T, Kawai H, Nagahara Y, Harigaya H, Kan S, Anno H, Takahashi H, et al. Plaque characterization by coronary computed tomography angiography and the likelihood of Acute coronary events in mid-term follow-up. *J Am Coll Cardiol*. 2015;66:337–346. doi: 10.1016/j.jacc.2015.05.069
- Agatston AS, Janowitz WR, Hildner FJ, Zusmer NR, Viamonte M Jr, Detrano R. Quantification of coronary artery calcium using ultrafast computed tomography. *J Am Coll Cardiol*. 1990;15:827–832. doi: 10.1016/0735-1097(90)90282-t
- McClelland RL, Chung H, Detrano R, Post W, Kronmal RA. Distribution of coronary artery calcium by race, gender, and age: results from the Multi-Ethnic Study of Atherosclerosis (MESA). *Circulation*. 2006;113:30–37. doi: 10.1161/CIRCULATIONAHA.105.580696
- Shah S, Bellam N, Leipsic J, Berman DS, Quyyumi A, Hausleiter J, Achenbach S, Al-Mallah M, Budoff MJ, Cademartiri F, et al; CONFIRM (CORonary CT Angiography EvaluatioN For Clinical Outcomes: An International Multicenter Registry) Investigators. Prognostic significance of calcified plaque among symptomatic patients with nonobstructive coronary artery disease. *J Nucl Cardiol*. 2014;21:453–466. doi: 10.1007/s12350-014-9865-9
- McClelland RL, Jorgensen NV, Budoff M, Blaha MJ, Post WS, Kronmal RA, Bild DE, Shea S, Liu K, Watson KE, et al. 10-year coronary heart disease risk prediction using coronary artery calcium and traditional risk factors: derivation in the MESA (Multi-Ethnic Study of Atherosclerosis) with validation in the HNR (Heinz Nixdorf Recall) study and the DHS (Dallas Heart Study). *J Am Coll Cardiol*. 2015;66:1643–1653. doi: 10.1016/j.jacc.2015.08.035
- Hoffmann U, Massaro JM, D'Agostino RB, Sr., Kathiresan S, Fox CS and O'Donnell CJ. Cardiovascular event prediction and risk reclassification by coronary, aortic, and valvular calcification in the Framingham Heart study. *J Am Heart Assoc*. 2016;5(2):e002144.
- Joshi NV, Vesey AT, Williams MC, Shah AS, Calvert PA, Craighead FH, Yeoh SE, Wallace W, Salter D, Fletcher AM, et al. 18F-fluoride positron emission tomography for identification of ruptured and high-risk coronary atherosclerotic plaques: a prospective clinical trial. *Lancet*. 2014;383:705–713. doi: 10.1016/S0140-6736(13)61754-7
- Virmani R, Kolodgie FD, Burke AP, Farb A, Schwartz SM. Lessons from sudden coronary death: a comprehensive morphological classification scheme for atherosclerotic lesions. *Arterioscler Thromb Vasc Biol*. 2000;20:1262–1275. doi: 10.1161/01.atv.20.5.1262
- Virmani R, Burke AP, Kolodgie FD, Farb A. Vulnerable plaque: the pathology of unstable coronary lesions. *J Interv Cardiol*. 2002;15:439–446. doi: 10.1111/j.1540-8183.2002.tb01087.x
- Stone GW, Maehara A, Lansky AJ, de Bruyne B, Cristea E, Mintz GS, Mehran R, McPherson J, Farhat N, Marso SP, et al; PROSPECT Investigators. A prospective natural-history study of coronary atherosclerosis. *N Engl J Med*. 2011;364:226–235. doi: 10.1056/NEJMoa1002358
- Voros S, Rinehart S, Qian Z, Joshi P, Vazquez G, Fischer C, Belur P, Hulten E, Villines TC. Coronary atherosclerosis imaging by coronary CT angiography: current status, correlation with intravascular interrogation and meta-analysis. *JACC Cardiovasc Imaging*. 2011;4:537–548. doi: 10.1016/j.jcmg.2011.03.006
- Williams MC, Moss AJ, Dweck M, Adamson PD, Alam S, Hunter A, Shah ASV, Pawade T, Weir-McCall JR, Roditi G, et al. Coronary artery plaque characteristics associated with adverse outcomes in the SCOT-HEART study. *J Am Coll Cardiol*. 2019;73:291–301. doi: 10.1016/j.jacc.2018.10.066
- Dey D, Cheng VY, Slomka PJ, Nakazato R, Ramesh A, Gurudevan S, Germano G, Berman DS. Automated 3-dimensional quantification of non-calcified and calcified coronary plaque from coronary CT angiography. *J Cardiovasc Comput Tomogr*. 2009;3:372–382. doi: 10.1016/j.jcct.2009.09.004
- Dey D, Diaz Zamudio M, Schuhbaeck A, Juarez Orozco LE, Otaki Y, Gransar H, Li D, Germano G, Achenbach S, Berman DS, et al. Relationship between quantitative adverse plaque features from coronary computed tomography angiography and downstream impaired myocardial flow reserve by 13N-ammonia positron emission tomography: a pilot study. *Circ Cardiovasc Imaging*. 2015;8:e003255. doi: 10.1161/CIRCIMAGING.115.003255
- Newby DE, Williams MC, Flapan AD, Forbes JF, Hargreaves AD, Leslie SJ, Lewis SC, McKillop G, McLean S, Reid JH, et al. Role of multidetector computed tomography in the diagnosis and management of patients attending the rapid access chest pain clinic. The Scottish Computed Tomography of the Heart (SCOT-HEART) trial: study protocol for randomized controlled trial. *Trials*. 2012;13:184. doi: 10.1186/1745-6215-13-184
- Newby DE, Adamson PD, Berry C, Boon NA, Dweck MR, Flather M, Forbes J, Hunter A, Lewis S, MacLean S, et al; SCOT-HEART Investigators. Coronary CT angiography and 5-year risk of myocardial infarction. *N Engl J Med*. 2018;379:924–933. doi: 10.1056/NEJMoa1805971
- SCOT-HEART Investigators. CT coronary angiography in patients with suspected angina due to coronary heart disease (SCOT-HEART): an open-label, parallel-group, multicentre trial. *Lancet*. 2015;385:2383–2391.
- Williams MC, Hunter A, Shah ASV, Assi V, Lewis S, Smith J, Berry C, Boon NA, Clark E, Flather M, et al; SCOT-HEART Investigators. Use of coronary computed tomographic angiography to guide management of patients with coronary disease. *J Am Coll Cardiol*. 2016;67:1759–1768. doi: 10.1016/j.jacc.2016.02.026

24. Woodward M, Brindle P, Tunstall-Pedoe H; SIGN group on risk estimation. Adding social deprivation and family history to cardiovascular risk assessment: the ASSIGN score from the Scottish Heart Health Extended Cohort (SHHEC). *Heart*. 2007;93:172–176. doi: 10.1136/hrt.2006.108167
25. Williams MC, Golay SK, Hunter A, Weir-McCall JR, Mlynska L, Dweck MR, Uren NG, Reid JH, Lewis SC, Berry C, et al. Observer variability in the assessment of CT coronary angiography and coronary artery calcium score: sub-study of the Scottish COmputed Tomography of the HEART (SCOT-HEART) trial. *Open Heart*. 2015;2:e000234. doi: 10.1136/openhrt-2014-000234
26. Øvrehus KA, Schuhbaeck A, Marwan M, Achenbach S, Nørgaard BL, Bøtker HE, Dey D. Reproducibility of semi-automatic coronary plaque quantification in coronary CT angiography with sub-mSv radiation dose. *J Cardiovasc Comput Tomogr*. 2016;10:114–120. doi: 10.1016/j.jcct.2015.11.003
27. Matsumoto H, Watanabe S, Kyo E, Tsuji T, Ando Y, Otaki Y, Cadet S, Gransar H, Berman DS, Slomka P, et al. Standardized volumetric plaque quantification and characterization from coronary CT angiography: a head-to-head comparison with invasive intravascular ultrasound. *Eur Radiol*. 2019;29:6129–6139. doi: 10.1007/s00330-019-06219-3
28. WOSCOPS. Computerised record linkage: compared with traditional patient follow-up methods in clinical trials and illustrated in a prospective epidemiological study. The West of Scotland Coronary Prevention Study Group. *J Clin Epidemiol*. 1995;48:1441-1452.
29. Arnett DK, Blumenthal RS, Albert MA, Buroker AB, Goldberger ZD, Hahn EJ, Himmelfarb CD, Khera A, Lloyd-Jones D, McEvoy JW, et al. 2019 ACC/AHA Guideline on the Primary Prevention of Cardiovascular Disease: a report of the American College of Cardiology/American Heart Association Task Force on Clinical Practice Guidelines. *Circulation*. 2019;140:e596–e646. doi: 10.1161/CIR.0000000000000678
30. Adamson PD, Newby DE, Hill CL, Coles A, Douglas PS, Fordyce CB. Comparison of international guidelines for assessment of suspected stable angina: insights from the PROMISE and SCOT-HEART. *JACC Cardiovasc Imaging*. 2018;11:1301–1310. doi: 10.1016/j.jcmg.2018.06.021
31. Miedema MD, Dardari ZA, Nasir K, Blankstein R, Knickelbine T, Oberembt S, Shaw L, Rumberger J, Michos ED, Rozanski A, et al. Association of coronary artery calcium with long-term, cause-specific mortality among young adults. *JAMA Netw Open*. 2019;2:e197440. doi: 10.1001/jamanetworkopen.2019.7440
32. Hadamitzky M, Täubert S, Deseive S, Byrne RA, Martinoff S, Schömig A, Hausleiter J. Prognostic value of coronary computed tomography angiography during 5 years of follow-up in patients with suspected coronary artery disease. *Eur Heart J*. 2013;34:3277–3285. doi: 10.1093/eurheartj/ehz293
33. Chang HJ, Lin FY, Lee SE, Andreini D, Bax J, Cademartiri F, Chinnaiyan K, Chow BJW, Conte E, Cury RC, et al. Coronary atherosclerotic precursors of acute coronary syndromes. *J Am Coll Cardiol*. 2018;71:2511–2522. doi: 10.1016/j.jacc.2018.02.079
34. Maddox TM, Stanislawski MA, Grunwald GK, Bradley SM, Ho PM, Tsai TT, Patel MR, Sandhu A, Valle J, Magid DJ, et al. Nonobstructive coronary artery disease and risk of myocardial infarction. *JAMA*. 2014;312:1754–1763. doi: 10.1001/jama.2014.14681
35. Little WC, Constantinescu M, Applegate RJ, Kutcher MA, Burrows MT, Kahl FR, Santamore WP. Can coronary angiography predict the site of a subsequent myocardial infarction in patients with mild-to-moderate coronary artery disease? *Circulation*. 1988;78(5 Pt 1):1157–1166. doi: 10.1161/01.cir.78.5.1157
36. Boden WE, O'Rourke RA, Teo KK, Hartigan PM, Maron DJ, Kostuk WJ, Knudtson M, Dada M, Casperson P, Harris CL, et al; COURAGE Trial Research Group. Optimal medical therapy with or without PCI for stable coronary disease. *N Engl J Med*. 2007;356:1503–1516. doi: 10.1056/NEJMoa070829
37. Chang HJ, Lin FY, Lee SE, Andreini D, Bax J, Cademartiri F, Chinnaiyan K, Chow BJW, Conte E, Cury RC, et al. Coronary atherosclerotic precursors of acute coronary syndromes. *J Am Coll Cardiol*. 2018;71:2511–2522. doi: 10.1016/j.jacc.2018.02.079
38. Lee SE, Chang HJ, Rizvi A, Hadamitzky M, Kim YJ, Conte E, Andreini D, Pontone G, Volpato V, Budoff MJ, et al. Rationale and design of the Progression of Atherosclerotic Plaque Determined by Computed Tomographic Angiography IMaging (PARADIGM) registry: a comprehensive exploration of plaque progression and its impact on clinical outcomes from a multicenter serial coronary computed tomographic angiography study. *Am Heart J*. 2016;182:72–79. doi: 10.1016/j.ahj.2016.09.003
39. Kwiecinski J, Dey D, Cadet S, Lee SE, Tamarappoo B, Otaki Y, Huynh PT, Friedman JD, Dweck MR, Newby DE, et al. Predictors of 18F-sodium fluoride uptake in patients with stable coronary artery disease and adverse plaque features on computed tomography angiography. *Eur Heart J Cardiovasc Imaging*. 2020;21:58–66. doi: 10.1093/ehjci/jez152
40. Ihdahid AR, Goeller M, Dey D, Nerlekar N, Yap G, Thakur U, Adams D, Cameron J, Seneviratne S, Achenbach S, et al. Comparison of coronary atherosclerotic plaque burden and composition as assessed on coronary computed tomography angiography in East Asian and European-origin Caucasians. *Am J Cardiol*. 2019;124:1012–1019. doi: 10.1016/j.amjcard.2019.06.020
41. Hell MM, Motwani M, Otaki Y, Cadet S, Gransar H, Miranda-Peats R, Valk J, Slomka PJ, Cheng VY, Rozanski A, et al. Quantitative global plaque characteristics from coronary computed tomography angiography for the prediction of future cardiac mortality during long-term follow-up. *Eur Heart J Cardiovasc Imaging*. 2017;18:1331–1339. doi: 10.1093/ehjci/jez183
42. Goeller M, Achenbach S, Cadet S, Kwan AC, Commandeur F, Slomka PJ, Gransar H, Albrecht MH, Tamarappoo BK, Berman DS, et al. Pericoronary adipose tissue computed tomography attenuation and high-risk plaque characteristics in acute coronary syndrome compared with stable coronary artery disease. *JAMA Cardiol*. 2018;3:858–863. doi: 10.1001/jamacardio.2018.1997
43. Oikonomou EK, Williams MC, Kotanidis CP, Desai MY, Marwan M, Antonopoulos AS, Thomas KE, Thomas S, Akoumianakis I, Fan LM, et al. A novel machine learning-derived radiotranscriptomic signature of perivascular fat improves cardiac risk prediction using coronary CT angiography. *Eur Heart J*. 2019;40:3529–3543. doi: 10.1093/eurheartj/ehz592