

# Low Mercury Concentration Produces Vasoconstriction, Decreases Nitric Oxide Bioavailability and Increases Oxidative Stress in Rat Conductance Artery

Núbia Belem Lemos<sup>1</sup>✉, Jhuli Keli Angeli<sup>1</sup>✉, Thaís de Oliveira Faria<sup>1</sup>✉, Rogério Faustino Ribeiro Junior<sup>1</sup>, Dalton Valentim Vassallo<sup>1,2</sup>\*, Alessandra Simão Padilha<sup>1</sup>, Ivanita Stefanon<sup>1</sup>

**1** Departamento de Ciências Fisiológicas, Universidade Federal do Espírito Santo, Vitória, Espírito Santo, Brazil, **2** Escola de Ensino Superior da Santa Casa de Misericórdia de Vitória, EMESCAM, Vitória, Espírito Santo, Brazil

## Abstract

Mercury is an environmental pollutant that reduces nitric oxide (NO) bioavailability and increases oxidative stress, having a close link with cardiovascular diseases, as carotid atherosclerosis, myocardial infarction, coronary heart disease and hypertension. One of the main sites affected by oxidative stress, which develops atherosclerosis, is the aorta. Under acute exposure to low mercury concentrations reactive oxygen species (ROS) production were only reported for resistance vessels but if low concentrations of mercury also affect conductance arteries it is still unclear. We investigated the acute effects of 6 nM HgCl<sub>2</sub> on endothelial function of aortic rings measuring the reactivity to phenylephrine in rings incubated, or not, with HgCl<sub>2</sub> for 45 min, the protein expression for cyclooxygenase 2 (COX-2) and the AT1 receptor. HgCl<sub>2</sub> increased R<sub>max</sub> and pD<sub>2</sub> to phenylephrine without changing the vasorelaxation induced by acetylcholine and sodium nitroprusside. Endothelial damage abolished the increased reactivity to phenylephrine. The increase of R<sub>max</sub> and pD<sub>2</sub> produced by L-NAME was smaller in the presence of HgCl<sub>2</sub>. Enalapril, losartan, indomethacin, furegrelate, the selective COX-2 inhibitor NS 398, superoxide dismutase and the NADPH oxidase inhibitor apocynin reverted HgCl<sub>2</sub> effects on the reactivity to phenylephrine, COX-2 protein expression was increased, and AT1 expression reduced. At low concentration, below the reference values, HgCl<sub>2</sub> increased vasoconstrictor activity by reducing NO bioavailability due to increased ROS production by NADPH oxidase activity. Results suggest that this is due to local release of angiotensin II and prostanoid vasoconstrictors. Results also suggest that acute low concentration mercury exposure, occurring time to time could induce vascular injury due to endothelial oxidative stress and contributing to increase peripheral resistance, being a high risk factor for public health.

**Citation:** Lemos NB, Angeli JK, Faria TdO, Ribeiro Junior RF, Vassallo DV, et al. (2012) Low Mercury Concentration Produces Vasoconstriction, Decreases Nitric Oxide Bioavailability and Increases Oxidative Stress in Rat Conductance Artery. PLoS ONE 7(11): e49005. doi:10.1371/journal.pone.0049005

**Editor:** Michael Bader, Max-Delbrück Center for Molecular Medicine (MDC), Germany

**Received:** May 22, 2012; **Accepted:** October 3, 2012; **Published:** November 7, 2012

**Copyright:** © 2012 Lemos et al. This is an open-access article distributed under the terms of the Creative Commons Attribution License, which permits unrestricted use, distribution, and reproduction in any medium, provided the original author and source are credited.

**Funding:** This study was supported by grants from N° 48511935/2009 PRONEX - FAPES/CNPq (Fundação de Amparo à Pesquisa do Espírito Santo/Conselho Nacional de Desenvolvimento Científico e Tecnológico) and CAPES (Coordenação de Aperfeiçoamento de Pessoal de Nível Superior). The funders had no role in study design, data collection and analysis, decision to publish, or preparation of the manuscript.

**Competing Interests:** The authors have declared that no competing interests exist.

\* E-mail: daltonv2@terra.com.br

✉ These authors contributed equally to this work.

## Introduction

Mercury is considered an environmental pollutant of high risk to public health. At present, humans are mostly exposed to mercury by the consumption of mercury-contaminated fish, the administration of thimerosal in vaccines, and the inhalation of mercury vapour during professional exposure [1–6]. Mercury compounds are highly volatile and soluble in water and lipids, entering the circulation through the pulmonary alveolus and by intestinal absorption, and crossing the blood-brain barrier. Once absorbed mercury produces adverse effects as kidney damage, acrodynia, gastroenteritis, pneumonia and pulmonary fibrosis, reduction of reproductive function and infertility, and affects the cardiovascular system, among others. [1,4,6–9].

Numerous studies have shown that mercury might induce oxidative stress with subsequent damage to several organs or systems [10–14] and also to reduce nitric oxide (NO) production and to suppress the inducible NO synthase gene expression [15–

16]. Indeed, there is a close link between mercury and cardiovascular diseases, such as carotid atherosclerosis, myocardial infarction, coronary heart disease and hypertension [5–6,10]. Mercury exists in several forms: inorganic mercury as metallic mercury and mercury vapor (Hg<sup>0</sup>) and mercurous mercury (Hg<sup>+</sup>) or mercuric mercury (Hg<sup>++</sup>) salts, and organic mercury, also called organometallic. The biological behavior, pharmacokinetics, and clinical significance of the various forms of mercury vary according to its chemical structure [17]. Once in the bloodstream, mercury undergoes catalase and peroxidase-mediated oxidation in red blood cells and tissues and is transformed into inorganic mercuric mercury (Hg<sup>++</sup>) and mercurous mercury (Hg<sup>+</sup>) [10,18]. Methylmercury is by far the most common form of organic Hg to which humans and animals are exposed and it is predominantly formed by methylation of inorganic mercuric ions by microorganisms present in soil and water [19–21].

Oxidative stress is known as an efficient mechanism to produce oxidized low-density lipoprotein and consequently atherosclerosis

[22]. Advanced glycation end products are generated and subsequent participation of inflammatory cells maintains vascular injury [23]. Mercury effects after chronic exposure generating oxidative stress at endothelial level are already reported for both conductance and resistance vessels [13,24–25]. However, under acute exposure to low mercury concentrations (6 nM) reactive oxygen species (ROS) production were only reported for resistance vessels [26].

One important site affected by oxidative stress, which develops atherosclerosis, is the aorta. However, if short periods of exposure and if low concentrations of mercury also affect conductance arteries it is still unclear [13,26]. The fact that the endothelium is affected by low concentrations of heavy metals below the reference values highlights the importance and the need to better understand the mechanisms by which these metals promote development of cardiovascular diseases [27–28]. Therefore, the current study aimed to explore the acute effect of low-concentration mercury exposure on endothelial function in the isolated aortic rings of rats and the possible role of oxidative stress and prostanoids generation. Our findings suggest that just a brief exposure of arteries to low mercury concentration, increases oxidative stress and render them hypercontractile secondary to an immediate loss of NO bioavailability.

## Materials and Methods

### Animals

Studies were performed on male Wistar rats (250–300 g). All experiments were conducted in compliance with the guidelines for biomedical research as stated by the Brazilian Societies of Experimental Biology and approved by a local ethic committee (004/2007 CEUA-EMESCAM). All rats had free access to water and were fed rat chow *ad libitum*.

### Isolated Rat Aorta Preparation

Rats were anesthetised with sodium thiopental (50 mg/kg, i.p.) and euthanized by exsanguination. Thoracic aortas were carefully dissected out and cleaned of fat and connective tissue. For reactivity experiments, the aortas were divided into cylindrical segments of 4 mm in length (5 to 6 each aortic rings). For the analysis of cyclooxygenase 2 (COX2) isoform and AT1 protein expression, after the experiments, arteries were rapidly frozen in liquid nitrogen and kept at  $-70^{\circ}\text{C}$  until the day of analysis.

**Vascular reactivity measurements.** Segments of thoracic aorta were mounted in an isolated tissue chamber containing Krebs–Henseleit solution (in mM: NaCl 118; KCl 4.7;  $\text{NaHCO}_3$  23;  $\text{CaCl}_2$  2.5;  $\text{KH}_2\text{PO}_4$  1.2;  $\text{MgSO}_4$  1.2; glucose 11 and EDTA 0.01), gassed with 95%  $\text{O}_2$  and 5%  $\text{CO}_2$  and maintained at a resting tension of 1 g at  $37^{\circ}\text{C}$ . Isometric tension was recorded using an isometric force transducer (TSD125C, CA, U.S.A) connected to an acquisition system (MP100 Biopac Systems, Inc., Santa Barbara, CA, U.S.A.).

After a 45-min equilibration period, all aortic rings were initially exposed twice to 75 mM KCl, first to check their functional integrity and again to assess the maximal tension that developed. Afterwards, endothelial integrity was tested with acetylcholine (10  $\mu\text{M}$ ) in segments that were previously contracted with phenylephrine (1  $\mu\text{M}$ ). Relaxation equal to or greater than 90% was considered demonstrative of the functional integrity of the endothelium. After a washout period (30 min), the aortic rings were incubated with  $\text{HgCl}_2$  (6 nM) or not (control) for 45 min. Then, increasing concentrations of phenylephrine (0.1 nM–30 mM) were applied, a concentration–response curve to this

contractile agonist was obtained and tension was measured once a plateau was attained.

For this study we selected the concentration of 6 nM  $\text{HgCl}_2$ , as a single concentration to be used in these experiments based on previous findings in our laboratory [26]. However, previous reports suggested that exposure to mercury vapor [2], due to the release of mercury from or during removal of amalgam fillings [29], increase blood and plasma concentrations (4 to 5 nM). However, toxicological consequences were still a matter of debate. We previously investigated the effects of continuous perfusion of 6 nM  $\text{HgCl}_2$  on the vascular reactivity of the perfused tail artery of the rat [26], which are not typical conductance arteries. We also investigated a chronic treatment focused on resistance, conductance and coronary arteries [13,24–25]. We then performed experiments to know if low mercury concentrations, without time to concentrate inside cells, could affect conductance arteries, as occurred for the tail artery. Knowing that oxidative stress and reduction of nitric oxide bioavailability, which are involved in aortic atherosclerosis development, these experiments were performed. If results did appear the repetitive exposure would gain importance.

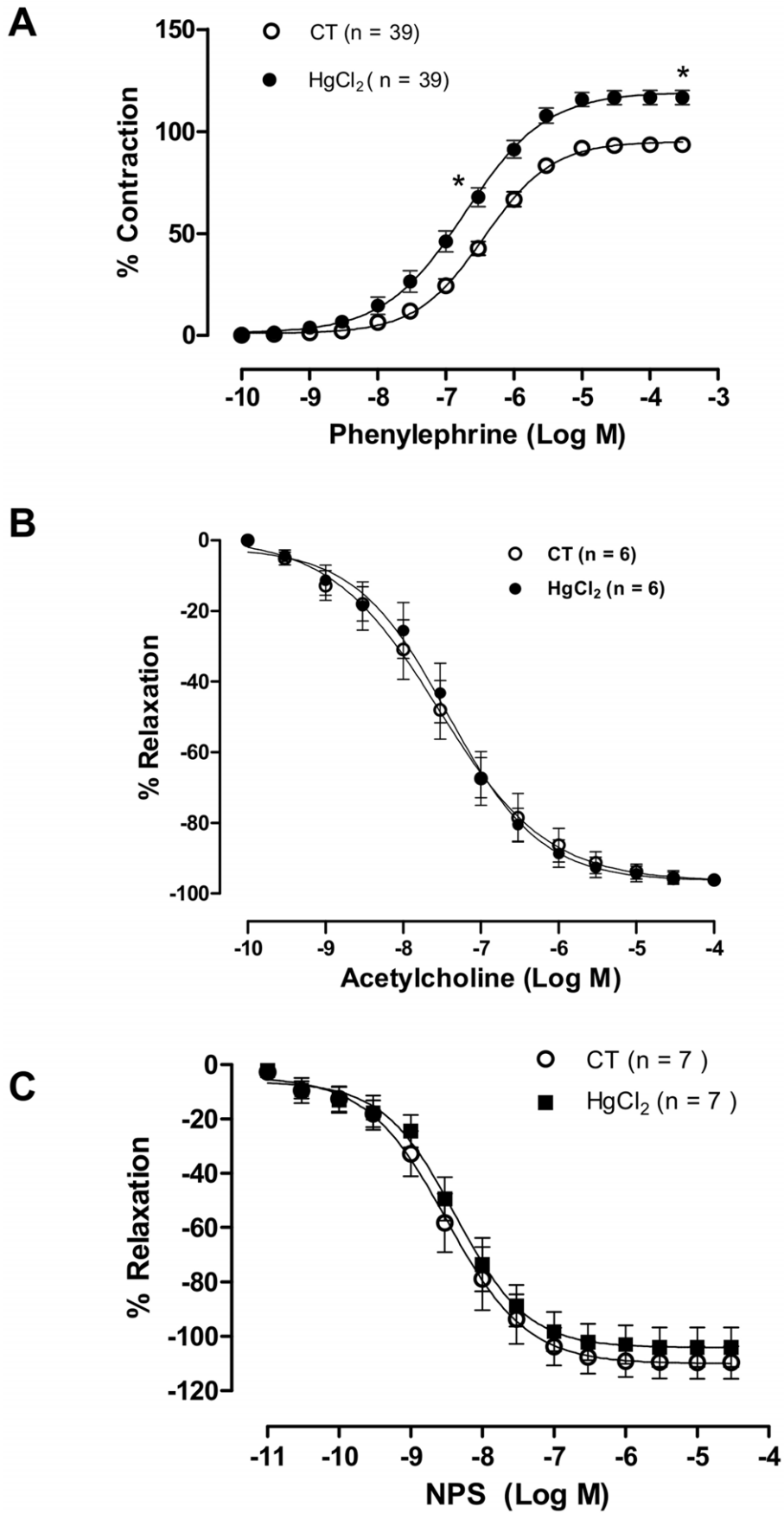
The influence of the endothelium on the response to phenylephrine in the absence or presence of  $\text{HgCl}_2$  (6 nM) was investigated after its mechanical removal by rubbing the lumen with a needle. The absence of endothelium was confirmed by the inability of 10  $\mu\text{M}$  acetylcholine to produce relaxation. The role of endothelial derived vasoactive factors on the phenylephrine-elicited contractile response was investigated. The effects of the following drugs were evaluated: 1) a nonspecific NOS inhibitor N-nitro-L-arginine methyl ester (L-NAME, 100  $\mu\text{M}$ ), 2) an enzyme scavenger of ROS (superoxide dismutase, 150 U  $\text{ml}^{-1}$ ), 3) an NADPH oxidase inhibitor (apocynin, 0.3 mM), 4) an angiotensin converting enzyme inhibitor (enalapril, 10  $\mu\text{M}$ ), 5) an angiotensin II type 1 receptor antagonist, (losartan, 10  $\mu\text{M}$ ), 6) a non-selective cyclooxygenase (COX) inhibitor (indomethacin, 10  $\mu\text{M}$ ), 7) a COX-2 inhibitor (NS 398, 1  $\mu\text{M}$ ), and 8) a thromboxane  $\text{A}_2$  ( $\text{TXA}_2$ ) synthase inhibitor (furegrelate, 1 mM). These drugs were added 45 min before the generation of the concentration–response curves to phenylephrine, in the absence or presence of  $\text{HgCl}_2$  (6 nM).

In another set of experiments, after the 45-min equilibration period, aortic rings were contracted with phenylephrine (1  $\mu\text{M}$ ) until reaching a plateau (about 15 min), and the concentration–response curves to acetylcholine (0.1 nM–30 mM) or sodium nitroprusside (0.01 nM–30  $\mu\text{M}$ ) were obtained before and after incubation with  $\text{HgCl}_2$  (6 nM), for 45 min.

### Biochemical Studies

**Western blot analysis of COX-2 and AT<sub>1</sub> expression.** COX-2 and AT1 protein expression were determined in homogenates from the aortic segments used for the reactivity experiments (approximately 6 h after extraction from the animal) that had been pre-incubated with or without  $\text{HgCl}_2$  (for 45 min) as previously described [30].

Proteins from homogenised arteries (90  $\mu\text{g}$  of protein) were separated by 10% SDS-PAGE. Proteins were transferred to nitrocellulose membranes that were incubated with either mouse monoclonal antibodies for COX-2 (1:200; Cayman Chemical; Ann Arbor, MI, USA) and AT<sub>1</sub> (1:500, Santa Cruz, Biotechnology, Santa Cruz, CA). After washing, the membranes were incubated with anti-mouse or anti-rabbit (1:5000, StressGen, Victoria, Canada) immunoglobulin antibody conjugated to horseradish peroxidase. After thorough washing, immunocomplexes were detected using an enhanced horseradish peroxidase/



**Figure 1. The effect of acute incubation with mercury chloride (HgCl<sub>2</sub>) on the concentration-response curves for phenylephrine (A), acetylcholine (B), and sodium nitroprusside (NPS) (C) in aortic rings in control (CT) conditions or HgCl<sub>2</sub>.** Results (mean±SEM) are expressed as a percentage of the response to 75 mmol/l KCl and percentage of the relaxation to phenylephrine respectively. \*P<0.05 by ANOVA. Number of animals used in parentheses. doi:10.1371/journal.pone.0049005.g001

luminal chemiluminescence system (ECL Plus, Amersham International, Little Chalfont, UK) and film (Hyperfilm ECL International). Signals on the immunoblot were quantified with the National Institutes of Health Image V1.56 computer program. The same membrane was used to determine  $\alpha$ -actin expression using a mouse monoclonal antibody (1:5000, Sigma, USA).

**Nitric oxide release.** Nitric oxide release was measured in thoracic aorta segments. Thoracic aorta segments were dissected and equilibrated for 30 min in HEPES buffer (in mmol·L<sup>-1</sup>: 119 NaCl, 20 HEPES, 1.2 CaCl<sub>2</sub>, 4.6 KCl, 1 MgSO<sub>4</sub>, 0.4 KH<sub>2</sub>PO<sub>4</sub>, 5 NaHCO<sub>3</sub>, 5.5 glucose, 0.15 NaH<sub>2</sub>PO<sub>4</sub>; pH 7.4) at 37°C. Arteries were then incubated with the fluorescent probe 4,5-diaminofluorescein (2 mmol·L<sup>-1</sup>) for 30 min, and the medium was collected to measure basal NO release. NO release was evaluated by measuring the release of NO after incubation with or without HgCl<sub>2</sub> for 45 minutes at 37°C. The fluorescence of the medium was measured at room temperature using a spectrofluorometer (LS50 Perkin Elmer Instruments, FL WINLAB Software) with the excitation wavelength set at 492 nm and the emission wavelength set at 515 nm. Blank measurement samples were similarly collected but without arteries to subtract background emission. The amount of NO released was expressed as arbitrary units·mg<sup>-1</sup> tissue.

## Drugs and Reagents

HgCl<sub>2</sub>, l-phenylephrine hydrochloride, L-NAME, enalaprilate, indomethacin, acetylcholine chloride, sodium thiopental, losartan, apocynin, sodium nitroprusside, SOD, were purchased from Sigma-Aldrich (St Louis, MO, USA); furegrelate and NS 398 were purchased from Cayman Chemical (Ann Arbor, MI) and 4,5-diaminofluorescein (Sigma Aldrich). Salts and reagents when not specified were of analytical grade obtained from Sigma (St Louis, MO, USA) and Merk (Darmstadt, Germany).

**Table 1. Parameters of maximal response (E<sub>max</sub>, mmHg) and sensitivity (pD<sub>2</sub>) of dose-response curves to phenylephrine in the aorta, before (E+) and after (E-) endothelial damage and after NG-nitro-L-arginine methyl ester (L-NAME, 100  $\mu$ M) incubation, in the presence (HgCl<sub>2</sub> E+) and absence of mercury chloride (E- HgCl<sub>2</sub>).**

	n	E <sub>max</sub> (%)	pD <sub>2</sub>
CT E+	39	93.5±2.52	-6.47±0.08
HgCl <sub>2</sub> E+	39	117±3.45 *	-6.77±0.10*
CT E-	07	128±3.08	-8.06±0.04
HgCl <sub>2</sub> E-	08	129±3.37	-8.34±0.24
CT E+	06	93±4	-6.4±0.09
L-NAME CT	06	183±15.3 *	-7±0.09 *
HgCl <sub>2</sub> E+	05	113±4.78	-6.6±0.14
L-NAME + HgCl <sub>2</sub>	05	168±8.94 *	-7±0.05 *

Results are expressed as means ± SEM of the no. of animals shown in Figs. 1–3. P<0.05 vs. CT (E+) (\*).

doi:10.1371/journal.pone.0049005.t001

## Data Analysis

Vasoconstrictor responses induced by phenylephrine were normalised to the contraction induced by 75 mM KCl and expressed as a percentage of this contraction. Vasodilator responses are expressed as the percentage of the previous contraction. For each concentration-response curve, the maximum effect (R<sub>max</sub>) and the concentration of agonist that produced one-half of R<sub>max</sub> (EC<sub>50</sub>) were calculated using nonlinear regression analysis (GraphPad Prism Software, San Diego, CA). The sensitivity of the agonists was expressed as pD<sub>2</sub> (-log EC<sub>50</sub>). To compare the effects of L-NAME or endothelium denudation on the contractile response to phenylephrine, the results were expressed as differences in the area under the concentration-response curves (dAUC) for phenylephrine in control and experimental situations. AUCs were calculated from the individual curve plots (GraphPad Prism Software), and differences are expressed as the percentage of the AUC for the corresponding control situation. These values indicate whether the magnitude of the effect of each treatment is different after incubation with HgCl<sub>2</sub>. For protein expression, data are expressed as the ratio between signals on the immunoblot corresponding to the studied protein and  $\alpha$ -actin.

Results are expressed as the means ± SEM of the number of rats studied; differences were analysed using Student's *t*-test or one-way ANOVA followed by a Bonferroni test. P<0.05 was considered significant.

## Results

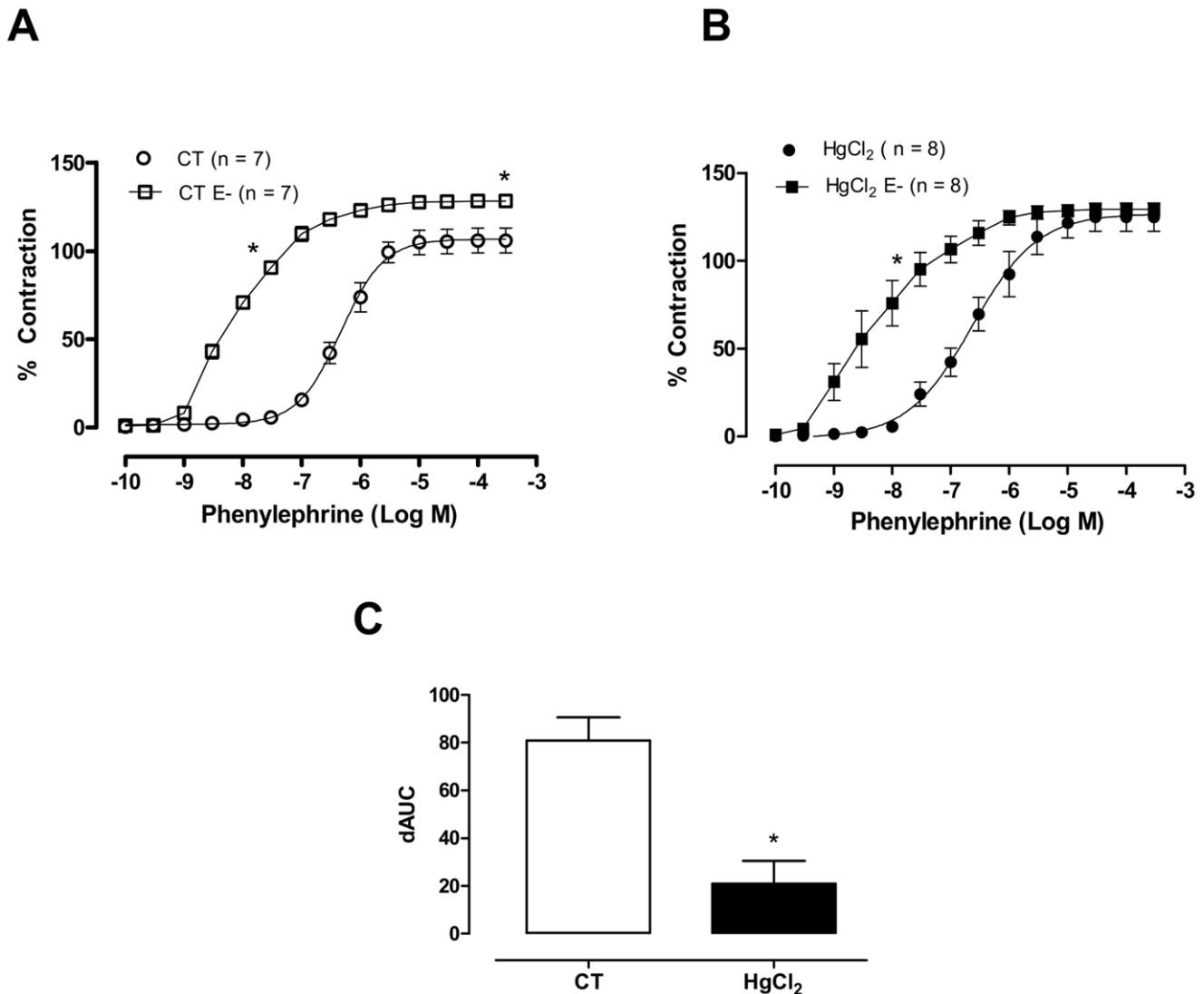
### Effect of Mercury Incubation on Vasoconstrictor and Vasodilator Responses

Acute mercury incubation increased the maximal response (R<sub>max</sub>) and sensitivity (pD<sub>2</sub>) to phenylephrine in aortic rings when compared to controls, but it did not modify the endothelium-dependent and -independent relaxation induced by acetylcholine and sodium nitroprusside, respectively (Figure 1, Table 1).

Endothelium removal (Fig. 2A and 2B; Table 1) and incubation with the NOS inhibitor L-NAME (100  $\mu$ M; Figure 3; Table 1) left-shifted the concentration-response curves to phenylephrine in aortic segments from both groups. These effects were smaller in mercury-treated rings, as shown by the dAUCs (Figure 2C and 3C). These results indicate that mercury incubation decreased NO bioavailability.

### The Role of Free Radicals in the Effects of HgCl<sub>2</sub> on the Phenylephrine Response

To determine if the endothelial damage observed in aortic rings after mercury incubation was related to changes in O<sub>2</sub><sup>-</sup> production, the effects of the NADPH oxidase inhibitor apocynin and superoxide anion scavenger SOD on vasoactive responses were investigated. Apocynin (0.3 mM; Figure 4A, 4B) and SOD (150 U/ml; Figure 5A and 5B) reduced both vasoconstrictor responses to phenylephrine in control aortic segments and those that had been incubated with mercury. However, the magnitude of these effects was greater after incubation with mercury, as shown by the dAUCs (Ct -39.8±5.7 vs HgCl<sub>2</sub> -65.1±4.8 Figure 4C and Ct -39.4±4.1 vs HgCl<sub>2</sub> -66.8±3.2 Figure 5C).



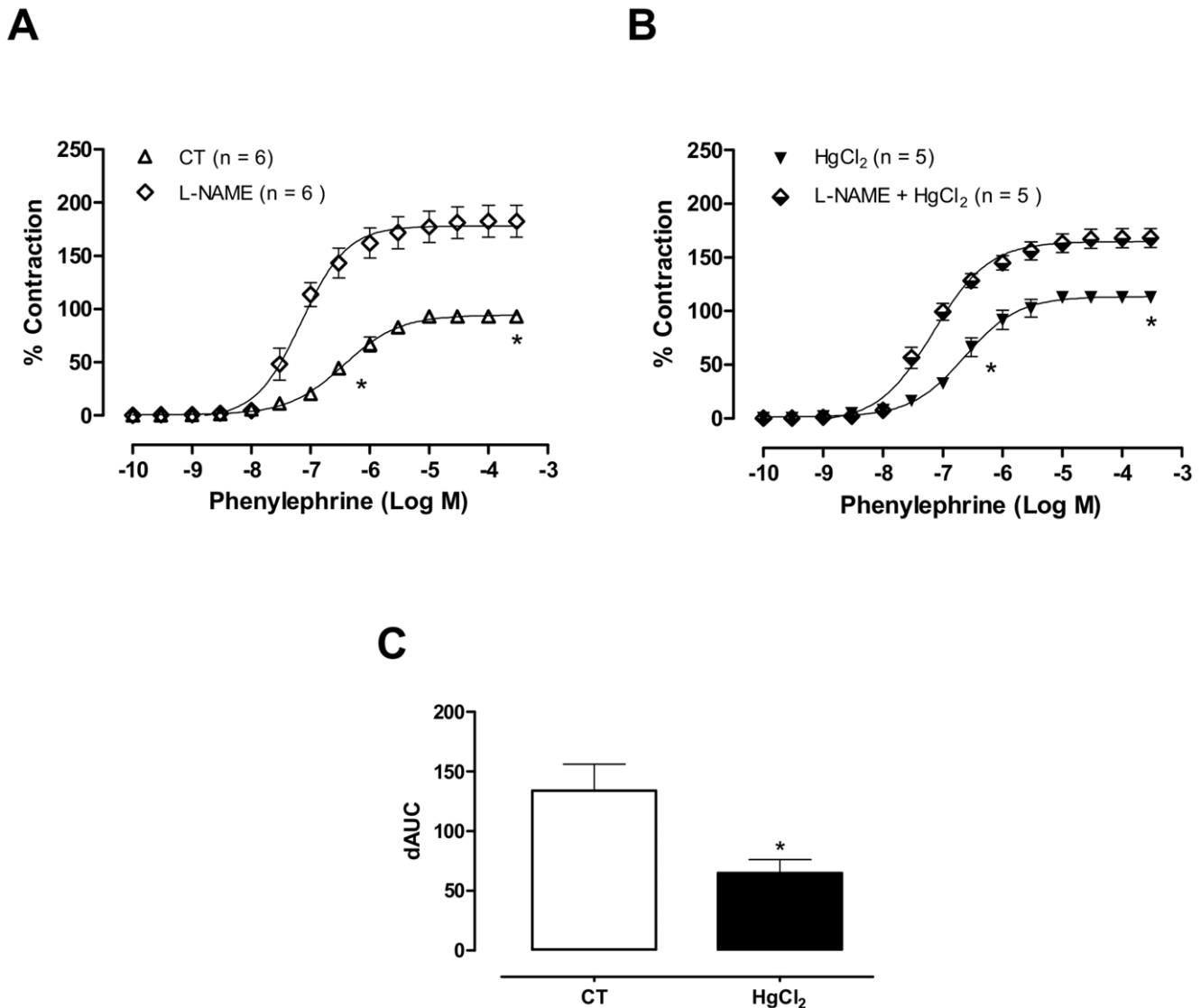
**Figure 2. The effect of endothelium removal (E-) on the concentration-response curves for phenylephrine in aortic rings in control (CT) conditions or HgCl<sub>2</sub> (A,B).** Results (mean±SEM) are expressed as a percentage of the response to 75 mmol/l KCl. \**P*<0.05 by ANOVA. Number of animals used in parentheses. (C) Differences in area under the concentration-response curve (dAUC) in the presence and absence of the endothelium of aortic rings in control (CT) conditions or HgCl<sub>2</sub>. \**P*<0.05 by Student's *t*-test. doi:10.1371/journal.pone.0049005.g002

### The Role of the Renin-Angiotensin System in the Effects of HgCl<sub>2</sub> on the Phenylephrine Response

To investigate whether the local renin-angiotensin-system is involved in the mercury-induced changes in vascular reactivity to phenylephrine, AT<sub>1</sub> receptors and angiotensin converting enzyme activity were blocked with losartan (10 μM) or enalapril (10 μM), respectively. As shown in the Figure 6 (A, B, C and D), both drugs partially reduced the effects of mercury on the concentration-response curve to phenylephrine (pD<sub>2</sub>: Ct, 6.73±0.06; HgCl<sub>2</sub>, 7.03±0.01; Enalapril, 6.76±0.18; Enalapril + HgCl<sub>2</sub>, 6.07±0.03; Losartan, 6.8±0.3; Losartan + HgCl<sub>2</sub>, 7.03±0.02 Emax: Ct, 93.5±2.52; HgCl<sub>2</sub>, 115.04±3.12; Losartan, 97.04±4.09; Enalapril, 106.28±3.02; Losartan+ HgCl<sub>2</sub> 95.81±3.02; Enalapril+ HgCl<sub>2</sub> 101.6±2.91). Corroborating these data, the protein expression of AT<sub>1</sub> was reduced after acute exposure to mercury (Figure 6E).

### The Role of the Cyclooxygenase Pathway in the Effects of HgCl<sub>2</sub> on the Phenylephrine Response

To investigate the putative role of prostanoids on the enhanced response to phenylephrine produced by the incubation of the aortic rings with HgCl<sub>2</sub>, indomethacin (10 μM) was used. It reduced the phenylephrine response in aortic rings from both control and Hg treated groups with indomethacin, and this effect was greater after incubation with mercury (Figure 7A and 7B); dAUC indomethacin (Figure 7C), Ct -40.01±4.22 vs HgCl<sub>2</sub> -64.10±5.36. To clarify this issue, we investigated whether cyclooxygenase II or thromboxane A<sub>2</sub> contributed to the effects of mercury. Aortic rings were incubated with NS 398 (1 μM; Figure 8A and 8B), an inhibitor of COX2, and furegrelate (10 μM; Figure 8D and 8E), an inhibitor of TXA<sub>2</sub>. As shown in Figure 8C and 8F, both drugs reduced the effects of mercury without altering the vascular reactivity to phenylephrine in control rings (dAUC: NS398, Ct -32.7±29.02 vs HgCl<sub>2</sub> -126.4±20.5) and (dAUC: furegrelate, Ct -52.65±28.55 vs HgCl<sub>2</sub>



**Figure 3. The effect of L-NAME (100  $\mu$ M) on the concentration-response curves for phenylephrine in aortic rings in control (CT) conditions or HgCl<sub>2</sub> (A,B).** Results (mean  $\pm$  SEM) are expressed as a percentage of the response to 75 mmol/l KCl. \* $P$ <0.05 by ANOVA. Number of animals used in parentheses. (C) Differences in the area under the concentration-response curve (dAUC) for aortic rings incubated in the presence and absence of L-NAME in controls (CT) or HgCl<sub>2</sub>. \* $P$ <0.05 by Student's *t*-test. doi:10.1371/journal.pone.0049005.g003

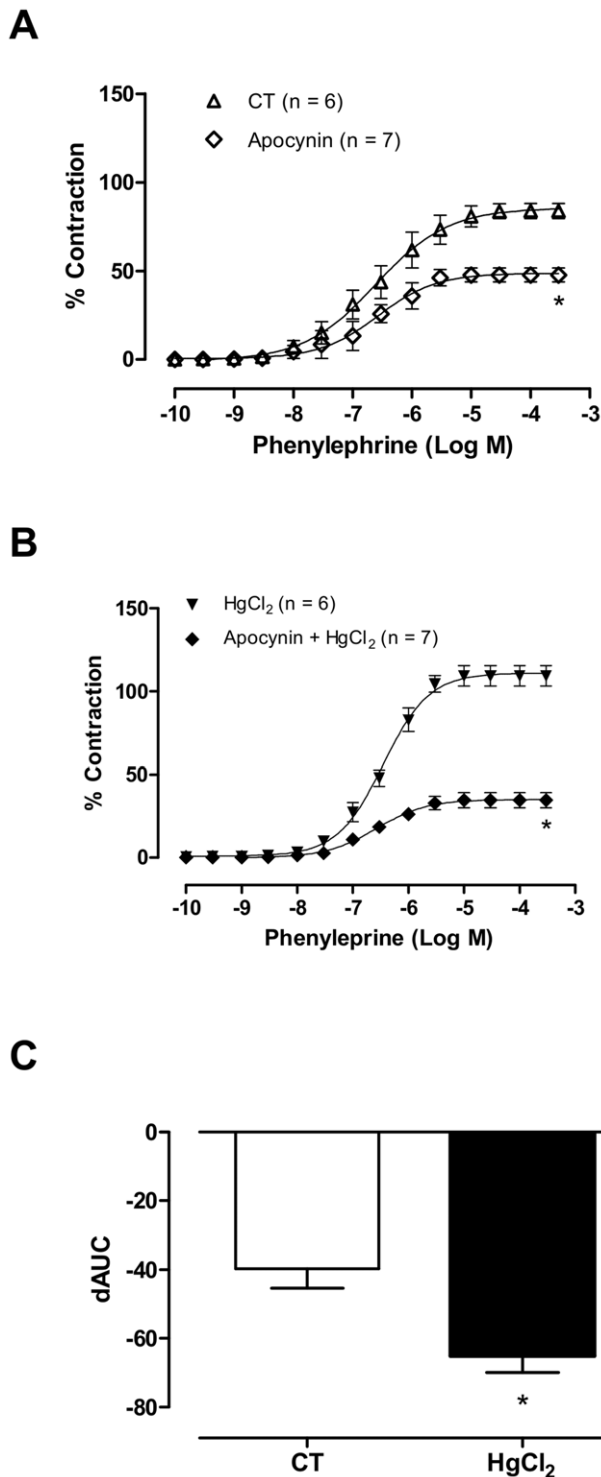
-149.26  $\pm$  22.83). In addition, COX-2 protein expression also increased in aortic rings after acute exposure to mercury (Figure 8G).

## Discussion and Conclusions

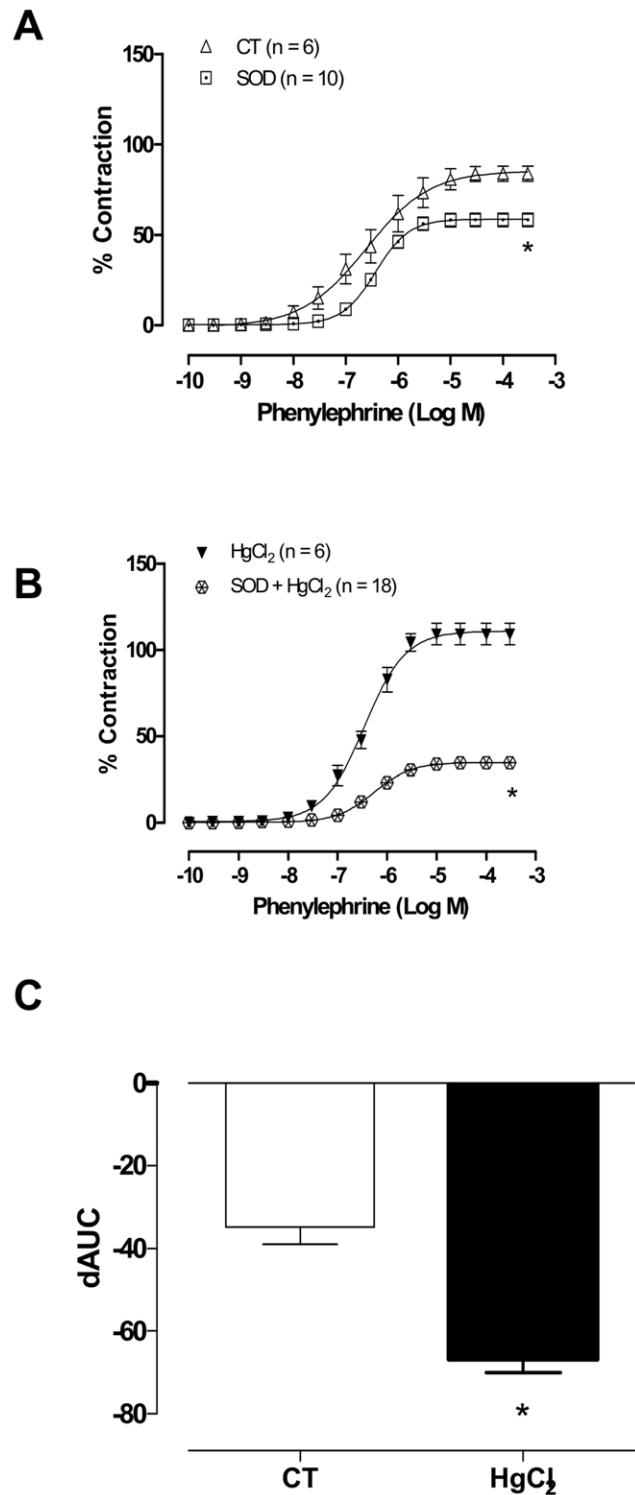
The present study demonstrated that even at a low concentration (6 nM), acute mercury administration alters the endothelial function of conductance vessels, as previously reported for resistance vessels [13,26]. Reduction of NO after exposure to mercury promoted decreased the NO endothelial modulation due to increased O<sub>2</sub><sup>-</sup> production increasing the vasoconstrictor response to phenylephrine. Administration of SOD and the NADPH oxidase inhibitor, apocynin, reduced this increased vasoconstrictor response. Results from pharmacological interventions with losartan, enalapril, indomethacin, NS 398 and furegrelate suggest that the renin-angiotensin system and COX-2

might be involved in the vascular effects of mercury. In addition, our results show an increase in COX-2 protein expression and a decrease in AT1 protein expression.

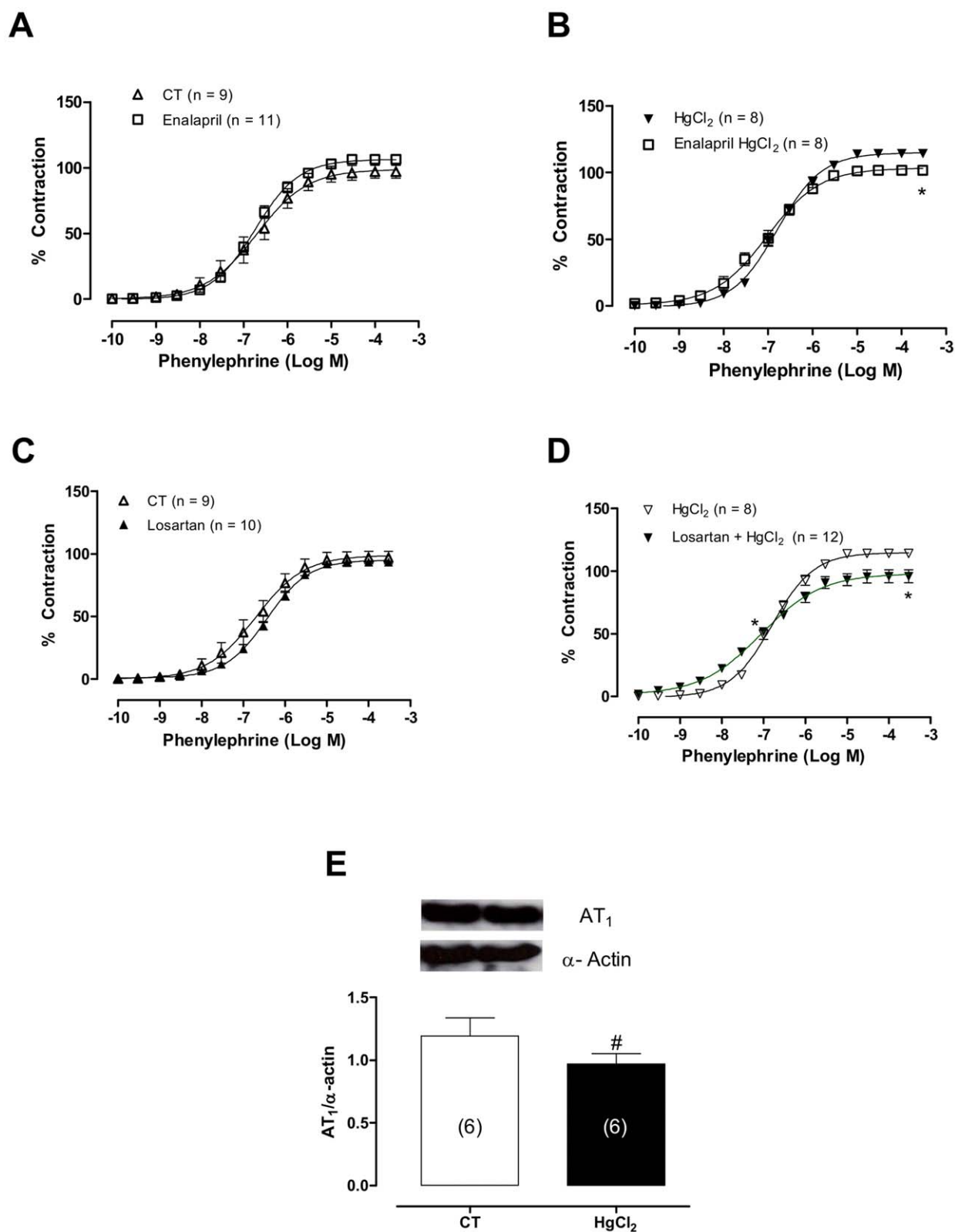
The fact that the endothelium is affected by low concentrations of heavy metals below the reference values highlights the importance and the need to better understand the mechanisms by which these metals promote development of cardiovascular diseases [8,27]. Mercury induces toxicological consequences as a result of exposure to mercury vapour [2], the release of mercury from or during removal of amalgam fillings [29] and the ingestion of contaminated fish [4]. Exposure to mercury vapour and removal of amalgam fillings increase blood and plasma concentrations of the metal (4 to 5 nM), but the toxicological consequences are still a matter of debate. In a recent biomonitoring study in New York City adults, the blood mercury concentration was 2.73 ng/mL, whereas in regular fish consumers it reached 5.65 ng/mL [3]. In the present study, we used a low



**Figure 4. The effect of apocynin (0.3 mM) on the concentration-response curves for phenylephrine in aortic rings in control (CT) conditions or HgCl<sub>2</sub> (A,B).** Results (mean±SEM) are expressed as a percentage of the response to 75 mmol/l KCl. \**P*<0.05 by ANOVA. Number of animals used in parentheses. (C) Differences in the area under the concentration-response curve (dAUC) in aortic rings cultured the presence and absence apocynin (0.3 mM), under control (CT) conditions or HgCl<sub>2</sub>. \**P*<0.05 by Student's *t*-test. doi:10.1371/journal.pone.0049005.g004

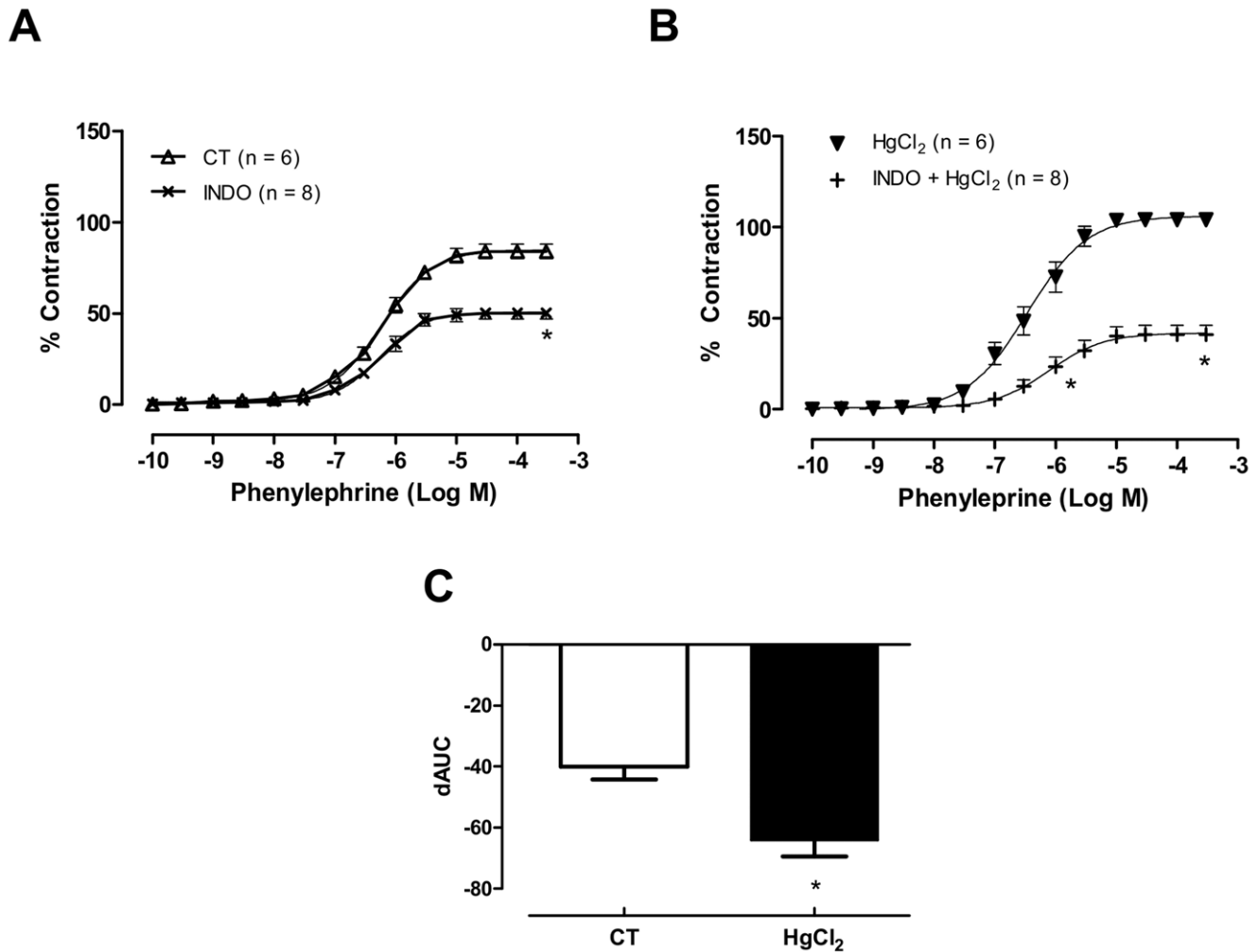


**Figure 5. The effect of superoxide dismutase (SOD, 150 U ml<sup>-1</sup>) on the concentration-response curves for phenylephrine in aortic rings in control (CT) conditions or HgCl<sub>2</sub> (A,B).** Results (mean±SEM) are expressed as a percentage of the response to 75 mmol/l KCl. \**P*<0.05 by ANOVA. Number of animals used in parentheses. (C) Differences in the area under the concentration-response curve (dAUC) in aortic rings cultured in the presence and absence of superoxide dismutase (SOD, 150 U ml<sup>-1</sup>) under control (CT) conditions or HgCl<sub>2</sub>. \**P*<0.05 by Student's *t*-test. doi:10.1371/journal.pone.0049005.g005



**Figure 6. (A,B) The effects of enalapril (10  $\mu$ M) and (C,D) losartan (10  $\mu$ M) on the concentration-response curves for phenylephrine and (E) densitometric analysis of the western blot for AT<sub>1</sub> in aortic rings in control (CT) conditions or HgCl<sub>2</sub>. Results (mean  $\pm$  SEM) are expressed as a percentage of the response to 75 mmol/l KCl. \* $P$  < 0.05 by ANOVA. (E) Densitometric analysis of the western blot for angiotensin receptor 1 (AT<sub>1</sub>) protein expression in aortic rings cultured in the absence (CT) of HgCl<sub>2</sub> and after acute incubation with HgCl<sub>2</sub>. \* $P$  < 0.05 by Student's  $t$ -test. Number of animals used in parentheses. Representative blots are also shown.  
doi:10.1371/journal.pone.0049005.g006**





**Figure 7. (A, B) The effect of indomethacin (Indo, 10  $\mu$ M), on the concentration-response curves for phenylephrine in aortic rings in control (CT) conditions or HgCl<sub>2</sub>.** Results (mean  $\pm$  SEM) are expressed as a percentage of the response to 75 mmol/l KCl. \* $P$ <0.05 by ANOVA. Number of animals used in parentheses. (C) Differences in the area under the concentration-response curve (dAUC) in aortic rings cultured in the presence of indomethacin (10  $\mu$ M) under control (CT) conditions and after acute incubation with mercury HgCl<sub>2</sub>. \* $P$ <0.05 by Student's *t*-test. doi:10.1371/journal.pone.0049005.g007

concentration of HgCl<sub>2</sub> (6 nM = 1.6 ng/mL), which is similar to the levels reached in exposed humans.

In some pathological conditions, such as atherosclerosis and hypertension, a reduction in NO bioavailability is reported to contribute to the appearance of cardiovascular disease [25]. Thus, a decrease in NO production could contribute for the development of cardiovascular disease. The main factor that contributes to the reduction of NO bioavailability is the increase of ROS. The superoxide anion interacts with NO and forms peroxynitrite, thereby decreasing the NO bioavailability for smooth muscle relaxation [31]. Thus, the reduced NO bioavailability induced by mercury could be related to increased levels of ROS. In fact, previous studies have associated mercury exposure with increased oxidative stress [5,11,32–34].

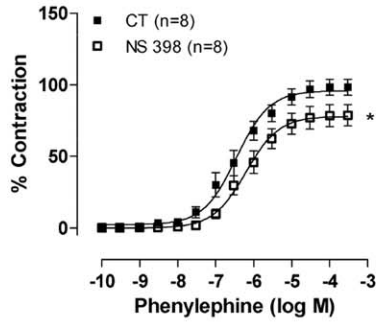
NO reduction is reported to increase vascular reactivity to vasoconstrictors [34]. We observed that acute administration of HgCl<sub>2</sub> promoted an increase in reactivity to phenylephrine in aortic rings. The comparison of dAUC changes of aortic rings with and without endothelium, suggested that the magnitude of the response to phenylephrine was lower after incubation with mercury. This result suggests that the ability of the endothelium

to negatively modulate the contractile response induced by phenylephrine seems to be impaired in isolated aortic rings incubated with HgCl<sub>2</sub>.

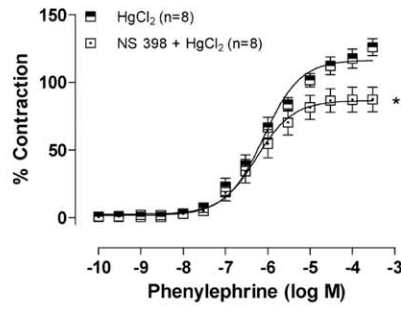
We then investigated if the reduction of endothelial modulation after incubation with mercury in aortic rings could be a consequence of reduced NO bioavailability as previously reported in the tail vascular bed and in mesenteric and aortic arteries [13,26,34]. In this study we also found reduced levels of NO after exposure to HgCl<sub>2</sub>. Grotto and colleagues [35] also reported a depletion of NO in rats sub-chronically exposed to MeHg at a low level.

However, an underlying mechanism associated to those previous findings is the oxidative stress generation. Our results showed that treatment with SOD or apocynin were able to reverse the effects of mercury on the vascular reactivity to phenylephrine in aortic rings, suggesting that acute exposure to mercury is accompanied by an increased production of ROS. Therefore, we suggest that increased vascular reactivity to phenylephrine induced by mercury could have been caused by an increased release of ROS with the resulting reduced bioavailability of NO.

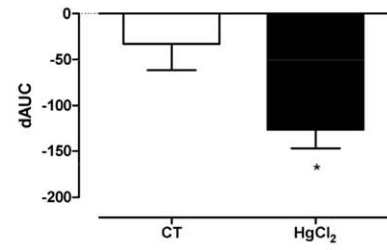
A)



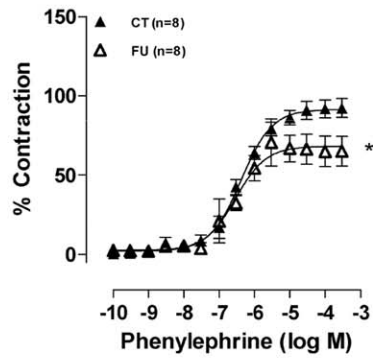
B)



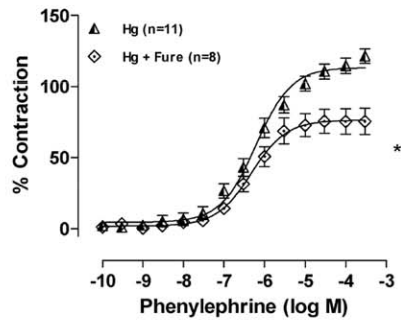
C)



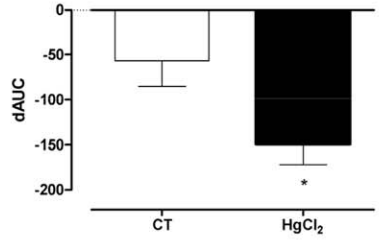
D)



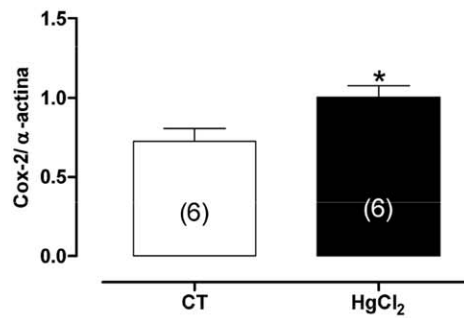
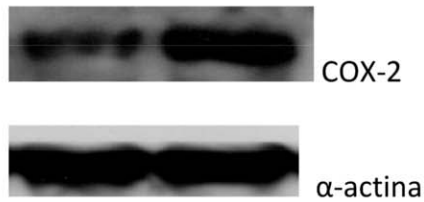
E)



F)



G)



**Figure 8. (A,B) The effect of NS 398 ( $10^{-6}$  M) and (D,E) furegrelate (FU,  $10^{-3}$  M) on the concentration-response curves for phenylephrine in aortic rings in control (CT) conditions or HgCl<sub>2</sub>. Results (mean±SEM) are expressed as a percentage of the response to 75 mmol/l KCl. \* $P<0.05$  by ANOVA. Number of animals used in parentheses. (C, F) Differences in the area under the concentration-response curve (dAUC) in aortic rings cultured in the presence of NS 398 ( $10^{-6}$  M) and furegrelate (FU,  $10^{-3}$  M) under control (CT) conditions and after acute incubation with mercury HgCl<sub>2</sub>. \* $P<0.05$  by Student's *t*-test. Densitometric analysis of the western blot for cyclooxygenase-2 (COX-2) protein expression in aortic rings in control (CT) conditions or HgCl<sub>2</sub>. \* $P<0.05$  by Student's *t*-test. Number of animals used in parentheses. Representative blots are also shown.**  
doi:10.1371/journal.pone.0049005.g008

We previously reported that treatment with small doses of mercury increases the release of COX-2 derived vasoconstrictor prostanoids and its participation in vasoconstrictor responses [20]. The increased activation of the renin-angiotensin system after mercury treatment would be associated with this increased COX-2 activity. These mechanisms would contribute to explain the endothelial dysfunction and the increased vasoconstrictor responses induced by mercury exposure [24]. A previous report has shown that an increase of the activity of the local renin-angiotensin system and production of prostanoid vasoconstrictors could increase ROS in the aorta of normotensive (WKY) and spontaneously hypertensive rats (SHR) [30]. Therefore, we investigated whether the vascular actions induced by mercury could involve the renin-angiotensin system and the cyclooxygenase pathway. Our findings indicate that HgCl<sub>2</sub> is able to increase the release of angiotensin II, which in turn could promote down regulation of AT<sub>1</sub> protein expression. In addition, angiotensin II can regulate COX-2 protein expression, the production of prostanoids [30,33,36], the ROS production [32] and NADPH oxidase activity [33,37]. Thus, increased local release of angiotensin II induced by mercury could cause the increased activity of COX-2 and NADPH oxidase and this could increase the release of ROS, as observed in this study.

In addition, we observed that indomethacin, NS 398 and furegrelate were able to reduce the effect of mercury on the contractile response to phenylephrine. These results suggest that vasoconstrictor prostanoids, specifically thromboxane A<sub>2</sub>, participate in the increased reactivity to phenylephrine induced by mercury. Corroborating these results, we also observed that acute exposure to HgCl<sub>2</sub> increased the protein expression of COX-2. The increased protein expression of COX-2 may result in an increased release of vasoconstrictor prostanoids and in an overproduction of ROS [32,38]. Taken together, these factors might contribute to inflammation, vascular injury and atherosclerosis development, rendering the vascular hyperreactivity to phenylephrine induced by mercury.

Although our results suggest a reduction of NO bioavailability induced by mercury, relaxations induced by acetylcholine and

sodium nitroprusside were not altered after incubation of aortic rings with this metal. These results indicate that the release of NO stimulated by acetylcholine was unaffected by incubation with mercury, suggesting that mercury does not seem to acutely modify the activity of NOS or signalling pathways involving guanylate cyclase. In contrast, a previous study has reported alterations in NOS activity due to sub-chronic exposure to methyl mercury [35]. Kishimoto and colleagues [39] also reported inhibition of NOS in cultured human umbilical vascular endothelial cells as a result of mercury toxicity. However, these studies were performed after sub-chronic exposure to mercury [35] or exposure to high concentrations of this metal [39].

However, our findings do not allow us to define which mechanism is the main one induced by mercury to increase oxidative stress, at least under the present experimental conditions. NO bioavailability reduction caused by ROS or increased endothelial production of vasoconstrictors, angiotensin II and thromboxane A<sub>2</sub>, altogether increase vascular reactivity.

In summary, these results show that in vitro exposure to low concentrations of HgCl<sub>2</sub> (6 nM) increased vascular reactivity to phenylephrine, possibly as a result of reduced NO bioavailability due to increased release of ROS. The increased release of ROS derived from NADPH oxidase might be due to the increased local release of angiotensin II and the release of prostanoid vasoconstrictors derived from the COX-2 pathway. Acute mercury exposure, occurring time to time could induce inflammation, vascular injury and atherosclerosis due to endothelial oxidative stress and contributing to increase peripheral resistance. Results also suggest that time to time acute exposure even at low mercury concentration might be a high risk factor for public health.

## Author Contributions

Conceived and designed the experiments: NBL JKA TOF RFRJ DVV ASP IS. Performed the experiments: NBL JKA TOF RFRJ DVV ASP IS. Analyzed the data: NBL JKA TOF RFRJ DVV ASP IS. Contributed reagents/materials/analysis tools: DVV ASP IS. Wrote the paper: NBL JKA TOF RFRJ DVV ASP IS.

## References

- Clarkson TW, Magos L, Myers GJ (2003) The Toxicology of Mercury – Current Exposures and Clinical Manifestations. *N Engl J Med* 349: 1731–1737.
- Langworth S, Sällsten G, Barregård L, Cynkier I, Lind ML, et al. (1997) Exposure to mercury vapour and impact on health in the dental profession in Sweden. *Journal of Dental Research* 76: 1397–1404.
- McKelvey W, Gwynn RC, Jeffery N, Kass D, Thorpe LE, et al. (2007) A biomonitoring study of lead, cadmium, and mercury in the blood of New York city adults. *Environ Health Perspect* 115: 1435–1441.
- Salonen JT, Seppänen K, Nyyssönen K, Korpela H, Kahvanen J, et al. (1995) Intake of mercury from fish, lipid peroxidation, and the risk of myocardial infarction and coronary, cardiovascular, and any death in eastern finnish men. *Circulation* 91: 645–655.
- Salonen JT, Seppänen K, Lakka TA, Salonen R, Kaplan GA (2000) Mercury accumulation and accelerated progression of carotid atherosclerosis: a population-based prospective 4-year follow-up study in men in eastern Finland. *Atherosclerosis* 148: 265–273.
- Virtanen JK, Voutilainen S, Rissanen TH, Mursu J, Tuomainen TP, et al. (2005) Mercury, fish oils, and risk of acute coronary events and cardiovascular disease, coronary heart disease, and all-cause mortality in men in eastern Finland. *Arterioscler Thromb Vasc Biol* 25: 228–233.
- Choi AL, Weihe P, Budtz-Jørgensen E, Jørgensen PJ, Salonen JT, et al. (2009) Methylmercury exposure and adverse cardiovascular effects in farose whaling men. *Environ Health Perspect* 117 (3): 367–372.
- Pinheiro MC, Macchi BM, Vieira JL, Oikawa T, Amaras WW, et al. (2008) Mercury exposure and antioxidant defenses in women: a comparative study in the Amazon. *Environ Res* 107: 53–59.
- World Health Organization (1991) Methylmercury. *Apud Environmental Health Criteria*, 118, Geneva, Switzerland.
- Houston MC (2007) The role of mercury and cadmium heavy metals in vascular disease, hypertension, coronary heart disease, and myocardial infarction. *Altern Ther Health Med* 13: S128–S133.
- Huang YL, Cheng SL, Lin TH (1996) Lipid peroxidation in rats administrated with mercuric chloride. *Biol Trace Elem Res* 52: 193–206.
- Mahboob M, Shireen KF, Atkinson A, Khan AT (2001) Lipid peroxidation and antioxidant enzyme activity in different organs of mice exposed to low level of mercury. *J Environ Sci Health B* 36: 687–697.
- Wiggers GA, Pecanha FM, Briones AM, Perez-Giron JV, Miguel M, et al. (2008) Low mercury concentrations cause oxidative stress and endothelial dysfunction in conductance and resistance arteries. *Am J Physiol Heart Circ Physiol* 295: H1033–H1043.

14. Wolf MB, Baynes JW (2007) Cadmium and mercury cause an oxidative stress-induced endothelial dysfunction. *Biomaterials* 20: 73–81.
15. Eckhardt W, Bellmann K, Kolb H (1999) Regulation of inducible nitric oxide synthase expression in beta cells by environmental factors: heavy metals. *Biochem J* 15: 695–700.
16. Kim SH, Sharma RP (2004) Mercury-induced apoptosis and necrosis in murine macrophages: role of calcium-induced reactive oxygen species and p38 mitogen-activated protein kinase signaling. *Toxicol Appl Pharmacol* 196: 47–57.
17. Bernhoft RA (2012) Mercury toxicity and treatment: a review of the literature. *J Environ and Public Health Article ID* 460508.
18. Roulet M, Lucotte M, Canuel R, Rheaut I, Tran S, et al. (1998) Distribution and partition of total mercury in waters of the Tapajos River Basin, Brazilian Amazon. *Sci Total Environ* 213: 203–211.
19. Clarkson TW, Magos L (2006) The toxicology of mercury and its chemical compounds. *Crit Rev in Toxicol* 8: 609–662.
20. Rooney JPK (2007) The role of thiols, dithiols, nutritional factors and interacting ligands in the toxicology of mercury *Toxicol* 234: 145–156.
21. Zalups RK (2000) Molecular interactions with mercury in the kidney. *Pharmacol Rev* 52: 113–143.
22. Mitra S, Deshmukh A, Sachdeva R, Lu J, Mehta JL (2011) Oxidized low-density lipoprotein and atherosclerosis implications in antioxidant therapy. *Am J Med Sci* 342: 135–142.
23. Harja E, Bu DX, Hudson BI, Chang JS, Shen X, et al. (2008) Vascular and inflammatory stresses mediate atherosclerosis via RAGE and its ligands in apoE<sup>-/-</sup> mice. *J Clin Invest* 118: 183–194.
24. Furieri LB, Galán M, Avendaño MS, García-Redondo AB, Aguado A, et al. (2011) Endothelial dysfunction of rat coronary arteries after exposure to low concentrations of mercury is dependent on reactive oxygen species. *Br J Pharmacol* 162(3): 1819–1831.
25. Peçanha FM, Wiggers GA, Briones AM, Perez-Giron JV, Miguel M, et al. (2010). The role of cyclooxygenase (COX)-2 derived prostanoids on vasoconstrictor responses to phenylephrine is increased by exposure to mercury concentration. *J Physiol Pharmacol* 61(1): 29–36.
26. Wiggers GA, Stefanon I, Padilha AS, Peçanha FM, Vassallo DV, et al. (2008) Low nanomolar concentration of mercury chloride increases vascular reactivity to phenylephrine and local angiotensin production in rats. *Comp Biochem and Physiol C Toxicol Pharmacol* 147: 252–260.
27. Vassallo DV, Simões MR, Furieri LB, Fiorelli M, Fiorim J, et al. (2011) Toxic effects of mercury, lead and gadolinium on vascular reactivity. *Braz J Med Biol Res* 44(9): 939–946.
28. Vassallo DV, Moreira CM, Oliveira EM, Bertollo DM, Veloso TC (1999) Effects of mercury on the isolated heart muscle are prevented by DTT and cysteine. *Toxicol Appl Pharmacol*. 15; 156(2): 113–118.
29. Bjorkman L, Sandborgh-Englund G, Ekstrand J (1997) Mercury in saliva and feces after removal of amalgam fillings. *Toxicol Appl Pharmacol* 144: 156–62.
30. Álvarez Y, Pérez-Girón JV, Hernanz R, Briones AM, Redondo AM, et al. (2007) Losartan reduces the increased participation of cyclooxygenase-2-derived products in vascular responses of hypertensive rats. *Pharmacol Exp Ther* 321: 381–388.
31. Beckman JS, Koppenol WH (1996) Nitric oxide, superoxide, and peroxynitrite: the good, the bad, and ugly. *Am J Physiol* 271: C1424–C1437.
32. Chen C, Qu L, Li B, Xing L, Jia G, et al. (2005) Increased oxidative DNA damage, as assessed by urinary 8-hydroxy-2'-deoxyguanosine concentrations, and serum redox status in persons exposed to mercury. *Clin Chem* 51: 759–769.
33. Hu ZW, Kerb R, Shi XY, Wei-Lavery T, Hoffman BB (2002) Angiotensin II increases expression of cyclooxygenase-2: implications for the function of vascular smooth muscle cells. *J Pharmacol Exp Ther* 303: 563–573.
34. Vanhoutte PM, Shimokawa H, Tang EH, Feletou M (2009) Endothelial dysfunction and vascular disease. *Acta Physiol (Oxf)* 196: 193–222.
35. Grotto D, Barcelos GM, Garcia SC, Barbosa F (2009) Low level and sub-chronic exposure to methylmercury induces hypertension in rats: nitric oxide depletion and oxidative damage as possible mechanisms. *Arch Toxicol* 83: 653–62.
36. Davel AP, Wenceslau CF, Akamine EH, Xavier FE, Couto GK, et al. (2011) Endothelial dysfunction in cardiovascular and endocrine-metabolic diseases: an update. *Braz J Med Biol Res* 44: 920–32.
37. Griendling KK, Minieri CA, Ollerenshaw JD, Alexander RW (1994) Angiotensin II stimulates NADH and NADPH oxidase activity in cultured vascular smooth muscle cells. *Circ Res* 74: 1141–1148.
38. Wolin MS (2000) Interactions of oxidants with vascular signaling systems. *Arterioscler Thromb Vasc Biol* 20: 1430–42.
39. Kishimoto T, Oguri T, Tada M (1995) Effect of methylmercury (CH<sub>3</sub>HgCl) injury on nitric oxide synthase (NOS) activity in cultured human umbilical vascular endothelial cells. *Toxicology* 103: 1–7.