

8-24-2018

Low Peripheral T Follicular Helper Cells in Perinatally HIV-Infected Children Correlate With Advancing HIV Disease.

Bret McCarty

Mussa Mwamzuka


Fatma Marshed

Matthew Generoso

Patricia Alvarez

See next page for additional authors

Follow this and additional works at: <https://mouseion.jax.org/stfb2018>

 Part of the [Life Sciences Commons](#), and the [Medicine and Health Sciences Commons](#)

Recommended Citation

McCarty, Bret; Mwamzuka, Mussa; Marshed, Fatma; Generoso, Matthew; Alvarez, Patricia; Ilmet, Tiina; Kravietz, Adam; Ahmed, Aabid; Borkowsky, William; Unutmaz, Derya; and Khaitan, Alka, "Low Peripheral T Follicular Helper Cells in Perinatally HIV-Infected Children Correlate With Advancing HIV Disease." (2018). *Faculty Research 2018*. 190.
<https://mouseion.jax.org/stfb2018/190>

This Article is brought to you for free and open access by the Faculty Research at The Mouseion at the JAXlibrary. It has been accepted for inclusion in Faculty Research 2018 by an authorized administrator of The Mouseion at the JAXlibrary. For more information, please contact Douglas.Macbeth@jax.org.

Authors

Bret McCarty, Mussa Mwamzuka, Fatma Marshed, Matthew Generoso, Patricia Alvarez, Tiina Ilmet, Adam Kravietz, Aabid Ahmed, William Borkowsky, Derya Unutmaz, and Alka Khaitan



Low Peripheral T Follicular Helper Cells in Perinatally HIV-Infected Children Correlate With Advancing HIV Disease

Bret McCarty¹, Mussa Mwamzuka², Fatma Marshed², Matthew Generoso¹, Patricia Alvarez¹, Tiina Ilmet¹, Adam Kravietz¹, Aabid Ahmed², William Borkowsky¹, Derya Unutmaz³ and Alka Khaitan^{1,4*}

¹ Department of Pediatrics, Division of Infectious Diseases, New York University School of Medicine, New York, NY, United States, ² Bomu Hospital, Mombasa, Kenya, ³ Jackson Laboratory for Genomic Medicine, Farmington, CT, United States, ⁴ Department of Microbiology, New York University School of Medicine, New York, NY, United States

OPEN ACCESS

Edited by:

Shahram Salek-Ardakani,
Pfizer, United States

Reviewed by:

Ramon Arens,
Leiden University Medical Center,
Netherlands
Savita Pahwa,
University of Miami, United States
Georges Abboud,
University of Florida, United States

*Correspondence:

Alka Khaitan
alka.khaitan@nyumc.org

Specialty section:

This article was submitted to
T Cell Biology,
a section of the journal
Frontiers in Immunology

Received: 03 May 2018

Accepted: 01 August 2018

Published: 24 August 2018

Citation:

McCarty B, Mwamzuka M,
Marshed F, Generoso M, Alvarez P,
Ilmet T, Kravietz A, Ahmed A,
Borkowsky W, Unutmaz D and
Khaitan A (2018) Low Peripheral T
Follicular Helper Cells in Perinatally
HIV-Infected Children Correlate
With Advancing HIV Disease.
Front. Immunol. 9:1901.
doi: 10.3389/fimmu.2018.01901

Background: T follicular helper (Tfh) cells are crucial for B cell differentiation and antigen-specific antibody production. Dysregulation of Tfh-mediated B cell help weakens B cell responses in HIV infection. Moreover, Tfh cells in the lymph node and peripheral blood comprise a significant portion of the latent HIV reservoir. There is limited data on the effects of perinatal HIV infection on Tfh cells in children. We examined peripheral Tfh (pTfh) cell frequencies and phenotype in HIV-infected children and their associations with disease progression, immune activation, and B cell differentiation.

Methods: In a Kenyan cohort of 76 perinatally HIV-infected children, comprised of 43 treatment-naïve (ART-) and 33 on antiretroviral therapy (ART+), and 42 healthy controls (HIV-), we identified memory pTfh cells, T cell activation markers, and B cell differentiation states using multi-parameter flow cytometry. Soluble CD163 and intestinal fatty acid-binding protein plasma levels were quantified by ELISA.

Results: ART- children had reduced levels of pTfh cells compared with HIV- children that increased with antiretroviral therapy. HIV+ children had higher programmed cell death protein 1 (PD-1) expression on pTfh cells, regardless of treatment status. Low memory pTfh cells with elevated PD-1 levels correlated with advancing HIV disease status, indicated by increasing HIV viral loads and T cell and monocyte activation, and decreasing %CD4 and CD4:CD8 ratios. Antiretroviral treatment, particularly when started at younger ages, restored pTfh cell frequency and eliminated correlations with disease progression, but failed to lower PD-1 levels on pTfh cells and their associations with CD4 T cell percentages and activation. Altered B cell subsets, with decreased naïve and resting memory B cells and increased activated and tissue-like memory B cells in HIV+ children, correlated with low memory pTfh cell frequencies. Last, HIV+ children had decreased proportions of CXCR5+ CD8 T cells that associated with low %CD4 and CD4:CD8 ratios.

Conclusion: Low memory pTfh cell frequencies with high PD-1 expression in HIV+ children correlate with worsening disease status and an activated and differentiated B cell profile. This perturbed memory pTfh cell population may contribute to weak vaccine and HIV-specific antibody responses in HIV+ children. Restoring Tfh cell capacity may be important for novel pediatric HIV cure and vaccine strategies.

Keywords: T follicular helper cells, HIV, children, immune activation, B cells, T follicular cytotoxic cells

INTRODUCTION

T follicular helper (Tfh) cells are a recently described CD4 T cell subset that links the adaptive and humoral immune systems. These cells are identified by expression of chemokine receptor CXCR5 that directs their migration to B cell follicles in response to CXCL13. Once localized in B cell follicles, Tfh cells form germinal centers (GCs) (1). Their differentiation and functions are regulated by B-cell lymphoma 6 (Bcl-6) (2). Tfh cells stimulate B cell differentiation to plasma and memory B cells (3) and are critical for antigen-specific antibody production, class switching, and B cell memory differentiation (4). During natural infections or after vaccinations, Tfh cell interactions with B cells mediate high affinity class-switched antibody production and B cell memory development (3). Tfh cells exert effector functions by secretion of IL-21 in addition to small levels of Th1 and Th2 cytokines IFN γ and IL-4 (4, 5). Dysfunctional Tfh cells can result in autoantibodies and have been associated with autoimmune diseases such as rheumatoid arthritis and systemic lupus erythematosus (6–10).

A small portion of CD4 T cells closely resembling tissue-resident Tfh cells are found in the peripheral blood (10–12). These peripheral Tfh (pTfh) cells also provide B cell help, but require secondary signals that include CD40L and inducible T-cell costimulator (ICOS) interactions and IL-21 secretion from B cells (11). Phenotypically, pTfh cells differ from lymphoid Tfh cells. Bcl-6 is downregulated in circulating CXCR5+ CD4 T cells, and thus fails to identify pTfh cells (10, 11). Second, while programmed cell death protein 1 (PD-1) is constitutively expressed on lymphoid Tfh cells, in the periphery, PD-1 is variably expressed, with low levels on resting pTfh cells and high levels on activated pTfh cells (12–14).

T follicular helper cells are critical for clearance of acute and chronic viral infections and effective virus-specific antibody production. In HIV vaccine trials, improved humoral responses occurred in subjects with expanded HIV-specific IL-21+ pTfh cells (14). Moreover, certain Tfh cell subsets correlate with the development of broadly neutralizing HIV antibodies (13, 15). Indeed, Tfh cells are being investigated for novel HIV vaccine strategies (11, 13, 15). Studies of HIV-infected adults demonstrate that circulating Tfh cells are decreased while lymphoid Tfh cells are paradoxically expanded, functionally impaired, and preferentially infected with replication-competent HIV (14, 16–20). Most importantly, Tfh cells in peripheral blood and lymph nodes (LNs) comprise a major compartment of the latent HIV reservoir (14, 21). Thus, Tfh cells may have both

beneficial and pathologic roles during HIV infection—they are critical for HIV-specific humoral responses yet are also selective targets of HIV infection and enable HIV persistence in latent reservoirs.

Both lymphoid and circulating Tfh cells have impaired function in HIV+ adults, which may contribute to weakened responses to vaccines (16, 20, 22, 23). The potential consequences of muted antibody responses are magnified in children with perinatal HIV infection during routine childhood vaccinations. However, few studies have examined pTfh cells in children (18–20, 24). We evaluated pTfh cell frequencies and phenotype in children with perinatal HIV infection and their associations with HIV disease progression and B cell subsets. We found decreased pTfh cell levels in untreated HIV+ children compared with HIV negative children, which failed to normalize within 1 year of antiretroviral treatment. pTfh cells had elevated PD-1 expression in HIV+ children regardless of treatment status. Low pTfh cell frequencies with high PD-1 expression correlated with HIV disease progression and an activate/differentiated B cell distribution. Finally, CXCR5+ memory CD8 T cells were depleted in HIV+ children.

MATERIALS AND METHODS

Participants

Ethical approval for this study was obtained from New York University (10-02586) and Kenyatta National Hospital/University of Nairobi (P283/07/2011). Written informed consent and verbal assent when appropriate were obtained from all participants and/or parents. We enrolled a total of 76 perinatally infected HIV+ and 42 HIV negative-unexposed children (HIV–) aged 5–18 years old from Bomu Hospital in Mombasa, Kenya between 2011 and 2012. HIV+ children included 43 antiretroviral therapy naïve (ART–) and 33 HIV+ children on antiretroviral treatment for at least 6 months with viral load less than or equal to 5,000 copies/mL (ART+). Treatment timing and duration for ART+ subjects is shown in Table S1 in Supplementary Material. Individuals with a recent acute illness, active *Mycobacterium tuberculosis* or malaria infection, or pregnancy within one year were ineligible for study entry.

Plasma and peripheral blood mononuclear cells (PBMCs) were isolated from peripheral blood by centrifugation and Ficoll-Hypaque (GE Healthcare) density gradient centrifugation then cryopreserved in -80°C and liquid nitrogen, respectively. HIV RNA PCR was performed on diluted plasma samples with Roche,

TABLE 1 | Subject characteristics.

	HIV–	ART–	ART+	<i>p</i>
<i>n</i>	42	43	33	
Age (years) ^d	11 (9–13)	11 (8–14)	12 (8–13)	NS ^a
Female	17 (41%)	23 (54%)	19 (58%)	NS ^b
%CD4 ^d	38 (33–42)	24 (13–28)	32 (27–41)	<i>p</i> < 0.0001 ^a
Absolute CD4 count ^d	923 (739–1,247)	583 (352–812)	962 (750–1,228)	<i>p</i> < 0.0001 ^a
HIV log copies/mL ^d		4.8 (4.2–5.2)	2 (2–2)	<i>p</i> < 0.0001 ^c

^aKruskal–Wallis test.^bChi squared test.^cMann–Whitney test.^dMedian values with upper and lower quartile range.

COBAS® AmpliPrep/COBAS® TaqMan® HIV-1 Test, version 2.0 (limit of detection 110 copies/mL).

HIV–, ART–, and ART+ were matched for age and sex (Table 1). Median CD4% in HIV– children was 38 (IQR 33–42). ART– had median CD4% of 24 (IQR 13–28) and HIV viral load of 4.8 (IQR 4.2–5.2) log copies/mL. ART+ had median CD4% and HIV viral load of 32 (IQR 27–41) and 2 (IQR 2–2) log copies/mL, respectively (Table 1).

Flow Cytometric Studies

Cryopreserved PBMCs were evaluated by flow cytometry with fluorescent-conjugated antibodies to CD3, CD4, CD8, CD45RO, CCR7, CXCR5, PD-1, CD38, HLA-DR, CD19, CD21, CD27, and β7. Cells were stained at 4°C for 30 min in PBS buffer containing 2% FCS and 0.1% sodium azide. Stained cells were analyzed using LSRII flow cytometer (BD Bioscience) and Flow Jo software (Tree Star). Singlet lymphocytes were gated based on forward and side scatter properties.

Plasma sCD163 and Intestinal Fatty Acid-Binding Protein (I-FABP)

Plasma levels of sCD163 and I-FABP were quantified by ELISA assay using Human sCD163 and I-FABP DuoSet kits (R&D Systems) per the manufacturer's instructions. Plasma samples were diluted 1:100 for sCD163 and 1:1,500 for I-FABP assays based on plasma titration studies to achieve levels within the range of the standard curve concentrations provided in the commercial ELISA kit according to the manufacturer's recommendation. Each test was performed in duplicate with results reported as the average of duplicate results.

Statistics

All statistical analyses were performed using GraphPad Prism software. For comparison of multiple groups of subjects, the Kruskal–Wallis test was performed, followed by the two-stage linear step-up procedure of Benjamini, Krieger, and Yekutieli to correct for multiple comparisons by controlling the false discovery rate. Multiple time points were evaluated with Wilcoxon matched-pairs signed-rank test. Correlations were assessed with the Spearman rank test. Threshold of significance for all tests was less than 0.05.

RESULTS

Memory pTfh Cells Are Decreased in Untreated HIV+ Children and Correlate With Disease Progression

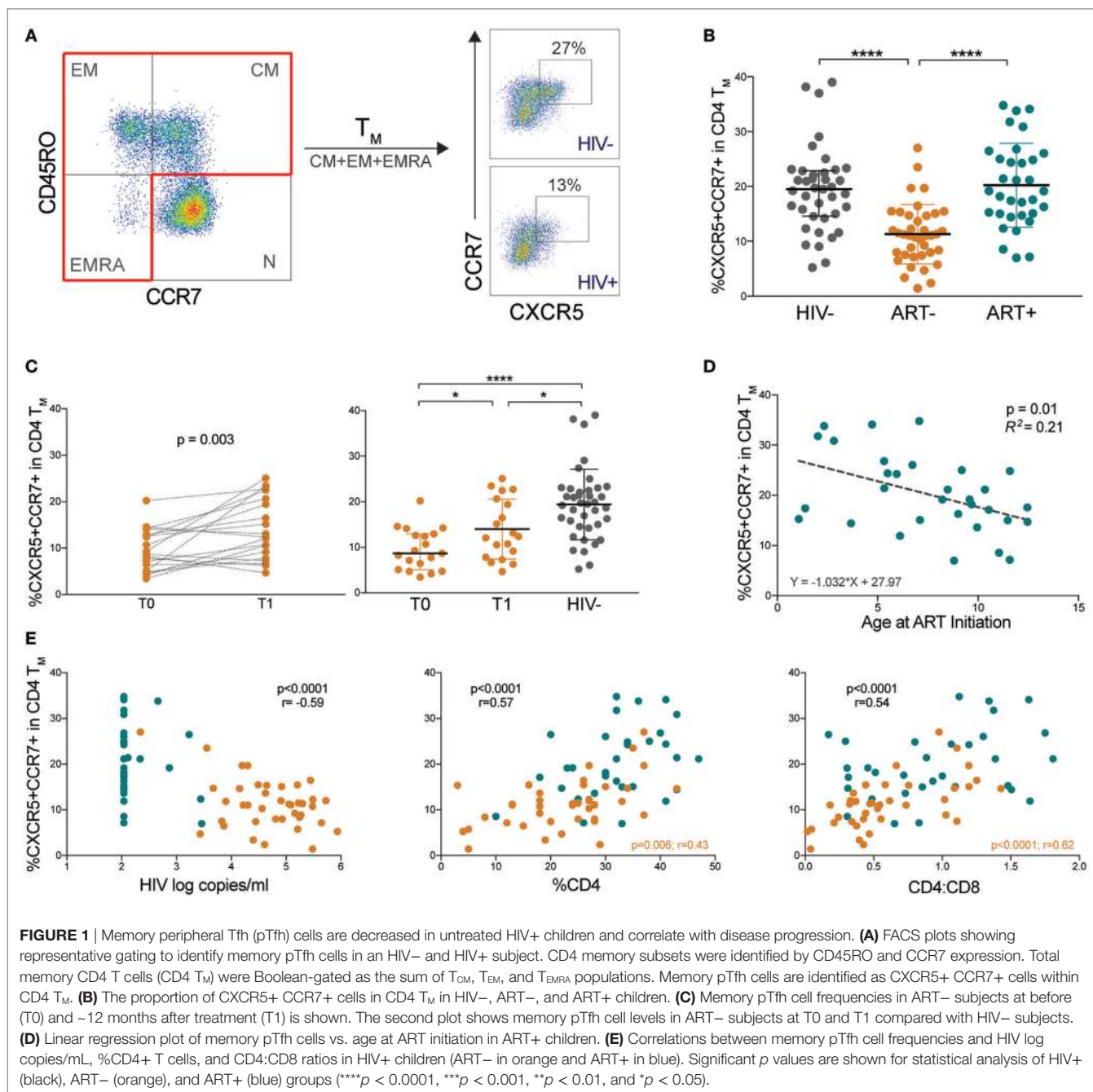
We identified pTfh cells by CXCR5 co-expressed with LN homing receptor CCR7 within memory CD4 T cells as described (25). Memory CD4 T cells (T_M) were identified as the sum of central (T_{CM}, CD45RO+CCR7+), effector (T_{EM}, CD45RO+ CCR7–), and RA+ effector (T_{EMRA}, CD45RO–CCR7–) subsets (Figure 1A). CXCR5+CCR7+ CD4 T_M (memory pTfh) levels were lower in ART– children compared with HIV– and ART+ (*p* < 0.0001; Figure 1B), even when adjusted for age as a potential confounder (Table S2 in Supplementary Material).

In a subset of ART– children who began antiretroviral therapy memory pTfh cell frequencies increased after ~12 months of treatment (*p* = 0.003; Figure 1C). However, these levels remained lower than HIV– children (*p* = 0.02; Figure 1C). In ART+ children, treatment initiation at an earlier age predicted preserved CXCR5+CCR7+ CD4 T_M (*p* = 0.01, *R*² = 0.21; Figure 1D). To determine the clinical relevance of decreased pTfh cell frequencies, we examined correlations between memory pTfh cells and clinical markers of HIV disease progression. In HIV+ subjects, memory pTfh cell levels correlated inversely with HIV viral load (*p* < 0.0001, *r* = –0.59) and directly with %CD4 (*p* < 0.0001, *r* = 0.57) and CD4:CD8 ratios (*p* < 0.0001, *r* = 0.54; Figure 1E). In separate analyses of ART– and ART+ children, memory pTfh frequencies correlated with %CD4 (*p* = 0.006, *r* = 0.43) and CD4:CD8 ratios (*p* < 0.0001, *r* = 0.62) in ART– but not in ART+ children. These correlations were not present in HIV– subjects (Figure S1A in Supplementary Material).

Low Memory pTfh Cell Frequencies Correlate With Immune Activation and Gut Mucosal Disruption in HIV+ Children

We next determined whether memory pTfh cell levels correlated with immune activation markers CD38 and HLA-DR, which are strong predictors of HIV disease progression (26). Memory pTfh cell frequencies inversely correlated with CD38+HLA-DR+ CD4 (*p* < 0.0001, *r* = –0.62) in HIV+ children and in separate analysis of ART– (*p* = 0.003, *r* = –0.47) and ART+ subjects (*p* = 0.04, *r* = –0.37; Figure 2A). Memory pTfh cell frequencies also negatively correlated with CD38+HLA-DR+ CD8 T cells (*p* = 0.006, *r* = –0.32) and monocyte activation, measured by plasma sCD163 concentrations in HIV+ children (*p* < 0.0001, *r* = –0.48), but not when divided into ART– and ART+ groups (Figures 2A,B). There were no significant correlations between pTfh cell frequencies and T cell or monocyte activation in HIV– children (Figures S1B,C in Supplementary Material).

Chronic inflammation in HIV is driven largely by a compromise of the gut mucosa, where the majority of CD4 T cells reside (27). In mouse models, Tfh cells have been shown to play a unique role in maintaining healthy gut homeostasis (28). To study a potential relationship between memory pTfh cells and the gut mucosa in humans, we evaluated correlations with two key gut-related proteins: β7 integrin and I-FABP. β7 is a subunit of

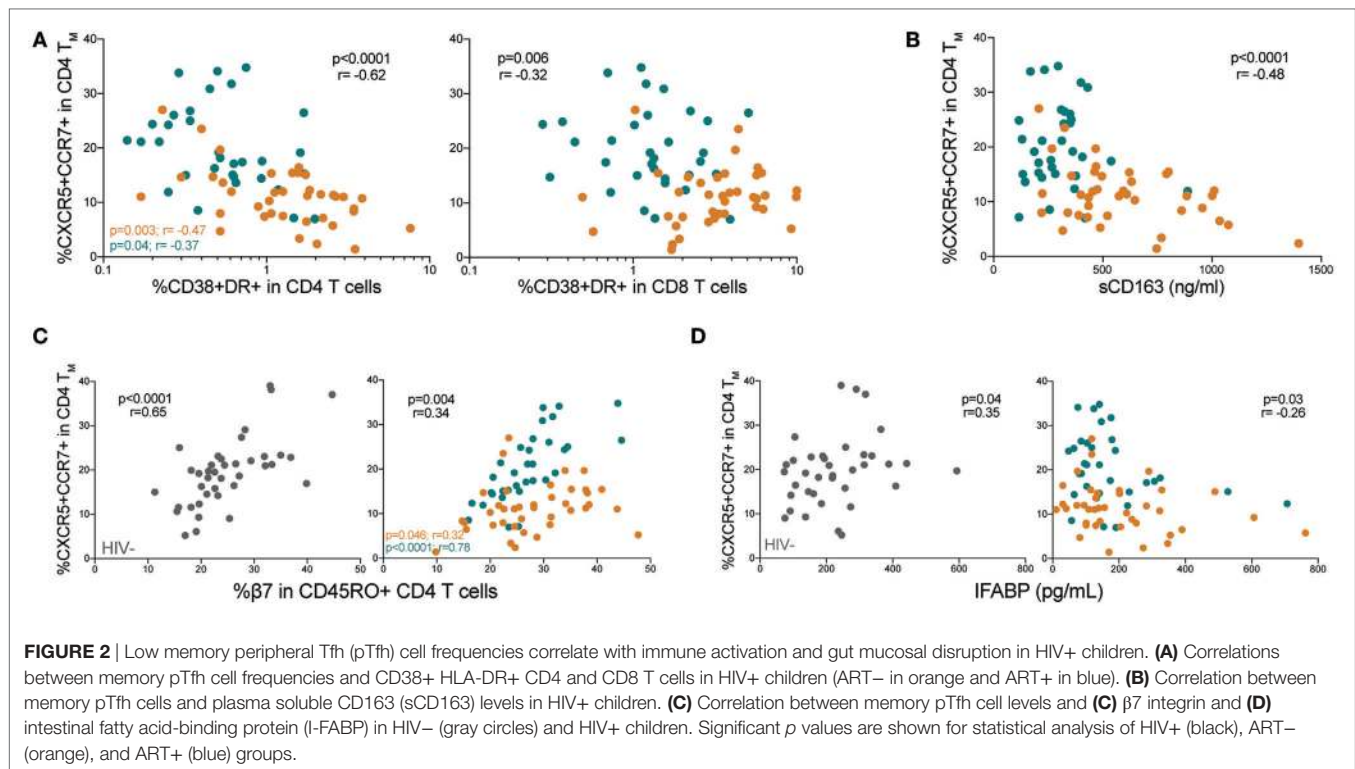


the gut-homing receptor and HIV co-receptor $\alpha_4\beta_7$ (29). I-FABP is expressed in epithelial cells of the small intestine and is released into the circulation following intestinal mucosal damage (30). Memory pTfh cell levels directly correlated with β_7 +CD45RO+ CD4 T cell frequencies, in both HIV- ($p < 0.0001$, $r = 0.65$) and HIV+ children ($p = 0.004$, $r = 0.34$; **Figure 2C**). ART+ children had a stronger correlation between pTfh cell frequency and β_7 expression in memory CD4 T cells ($p < 0.0001$, $r = 0.78$) compared with ART- children ($p = 0.046$, $r = 0.32$; **Figure 2C**). There was a direct correlation between memory pTfh cell frequencies and I-FABP levels ($p = 0.04$, $r = 0.35$) in HIV- children, and

an indirect correlation in HIV+ children ($p = 0.03$, $r = -0.26$; **Figure 2D**) but not separately in ART- and ART+ groups.

Memory pTfh Cells in HIV+ Children Express High PD-1 Levels That Correlate With Disease Progression

We next evaluated PD-1 expression on memory pTfh cells (gating strategy shown in Figure S2A in Supplementary Material). Both ART- and ART+ subjects had higher PD-1 expression on memory pTfh cells compared with HIV- children ($p < 0.0001$



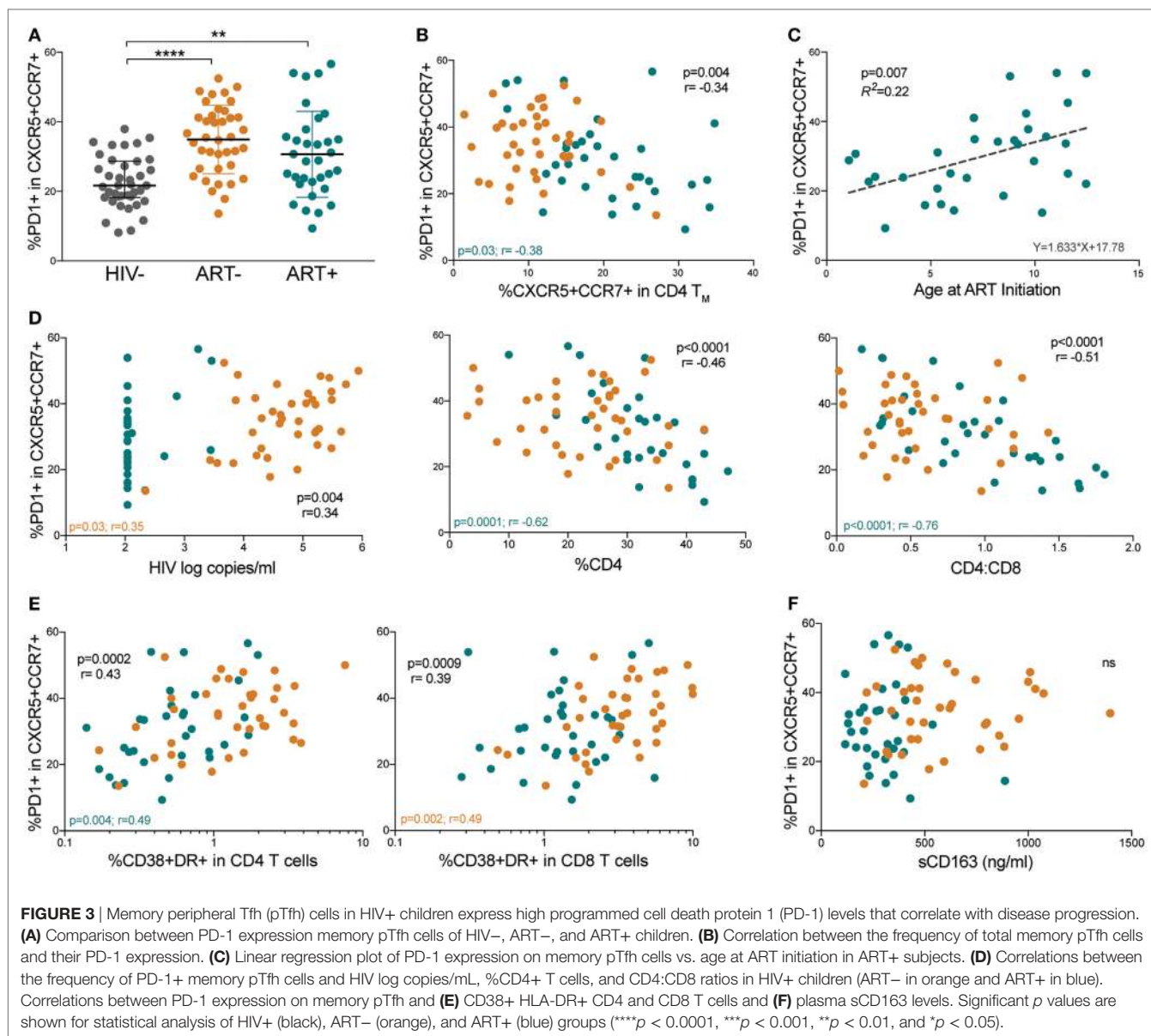
and $p = 0.003$, respectively; **Figure 3A**). PD-1 levels on memory pTfh cells negatively correlated with pTfh cell frequency in HIV+ ($p = 0.004$, $r = -0.34$) and ART+ children ($p = 0.03$, $r = -0.38$) but not in ART- children (**Figure 3B**). In ART+ children, earlier age at ART initiation predicted lower PD-1 expression on memory pTfh cells ($p = 0.007$, $R^2 = 0.22$; **Figure 3C**). PD-1+ memory pTfh cell frequencies correlated directly with HIV viral load ($p = 0.004$, $r = 0.34$), and inversely with %CD4 ($p < 0.0001$, $r = -0.51$; **Figure 3D**) but not in HIV- children (Figure S2B in Supplementary Material). PD-1+ expression on memory pTfh cell correlated directly with CD38+HLA-DR+ CD4 ($p = 0.0002$, $r = 0.43$) and CD8 T cells ($p = 0.0009$, $r = 0.39$; **Figure 3E**) but did not correlate with plasma sCD163 levels (**Figure 3F**) in HIV+ children. In ART- children, PD-1 expression on pTfh cells significantly correlated with HIV viral load ($p = 0.03$, $r = 0.35$, **Figure 2D**) and CD38+HLA-DR+ CD8 T cells ($p = 0.002$, $r = 0.49$; **Figure 3E**). In ART+ children, PD-1 expression correlated inversely with %CD4 ($p = 0.0001$, $r = -0.62$) and CD4:CD8 ratios ($p < 0.0001$, $r = -0.76$; **Figure 3D**). There were no significant correlations between PD-1 expression on pTfh cells and %CD4 or immune activation markers in HIV- children (Figures S2C,D in Supplementary Material).

Differentiated B Cell Populations Correlate With Low Memory pTfh Cells Expressing High PD-1 Levels

Because Tfh cells are intricately linked to B cell differentiation, we evaluated B cell populations and their associations with memory

pTfh cell frequencies and PD-1 expression. Total B cell frequencies were decreased in both ART- and ART+ compared with HIV- children ($p = 0.005$ and $p = 0.02$, respectively; **Figure 4A**). IgD expression on B cells was increased in ART- and ART+ children compared with HIV- children ($p = 0.002$ and $p = 0.0001$, respectively; **Figure 4B**), indicating muted class switching. We further sub-classified B cells into differentiation states of naïve mature (B_N , CD21+CD27-), resting memory (B_{RM} , CD21+CD27+), activated memory (B_{AM} , CD21-CD27+), and exhausted/tissue-like memory (B_{TLM} , CD21-CD27-; **Figure 4C**) subsets. ART+ had increased B_N frequencies compared with HIV- and ART- ($p < 0.0001$; **Figure 4D**). ART- and ART+ had decreased B_{RM} levels compared with HIV- ($p < 0.0001$; **Figure 4E**). B_{RM} levels were higher in ART+ compared with ART- children ($p = 0.002$; **Figure 4E**). ART- had elevated B_{AM} and B_{TLM} cell frequencies compared with HIV- ($p = 0.003$ and $p < 0.0001$) and ART+ ($p < 0.0001$; **Figures 4F,G**). ART+ had lower B_{AM} frequencies compared with HIV- ($p = 0.003$; **Figure 4F**).

We next examined associations between B cell differentiation states and memory pTfh cell frequencies. In HIV+ subjects, memory pTfh cell levels correlated directly with B_N ($p = 0.0001$, $r = 0.44$; **Figure 4D**) and B_{RM} frequencies ($p = 0.0003$, $r = 0.41$; **Figure 4E**), and inversely with B_{AM} ($p = 0.0002$, $r = -0.43$; **Figure 4F**) and B_{TLM} frequencies ($p < 0.0001$, $r = -0.52$; **Figure 4G**). Last, in HIV+ subjects, PD-1 expression on memory pTfh cells correlated inversely with B_N ($p = 0.03$, $r = -0.26$; **Figure 4D**) and B_{RM} ($p = 0.002$, $r = -0.36$; **Figure 4E**), and directly with B_{AM} ($p = 0.046$, $r = 0.24$; **Figure 4F**) and B_{TLM} levels ($p = 0.0006$, $r = 0.40$; **Figure 4G**). These correlations were insignificant when separated into ART- and ART+ subjects except PD-1 expression on pTfh cells in ART- children inversely correlated



with B_N frequency ($p = 0.02$, $r = -0.38$; **Figure 4D**) and directly with B_{TLM} frequency ($p = 0.003$, $r = 0.46$; **Figure 4G**). Memory pTfh cells and their PD-1 expression did not correlate with any B cell subpopulations in HIV- subjects (Figures S3A–D in Supplementary Material).

HIV+ Children Have Low CXCR5+ Memory CD8 T Cells With Elevated PD-1 Expression

Recently, a CD8 T cell counterpart to Tfh cells, defined as follicular cytotoxic T (Tfc) cells, was found to home to B cell follicles *via* a similar CXCR5-dependent mechanism (31). In the B cell follicle, Tfc cells control viral infection by killing infected Tfh cells and B cells (32, 33). We identified pTfc cells by CXCR5 expression in memory CD8 T cells (**Figure 5A**). CXCR5+ CD8 T_M (memory pTfc) cell frequencies were significantly lower in both ART- and

ART+ children compared with HIV- ($p < 0.0001$ and $p = 0.0002$, respectively; **Figure 5B**) even in multivariate analysis adjusting for age (Table S2 in Supplementary Material). In ART- subjects, memory pTfc cell frequencies increased after ~12 months of antiretroviral treatment ($p = 0.004$), but remained significantly lower than HIV- children ($p = 0.03$; **Figure 5C**).

Next, we determined whether memory pTfc cell levels correlated with clinical markers of HIV disease progression and immune activation. In HIV+ subjects, there was no significant correlation between memory pTfc cell frequencies and HIV viral load. Memory pTfc cells directly correlated with %CD4 ($p = 0.0005$, $r = 0.39$) and CD4:CD8 ratios ($p = 0.0001$, $r = 0.43$) in HIV+ subjects even when divided into ART- and ART+ groups (**Figure 5D**). In HIV- subjects, memory pTfc cell frequencies also correlated with CD4 percentages and CD4:CD8 ratios (%CD4: $p = 0.02$, $r = 0.37$; CD4:CD8: $p = 0.02$, $r = 0.37$; **Figure 5A4** in

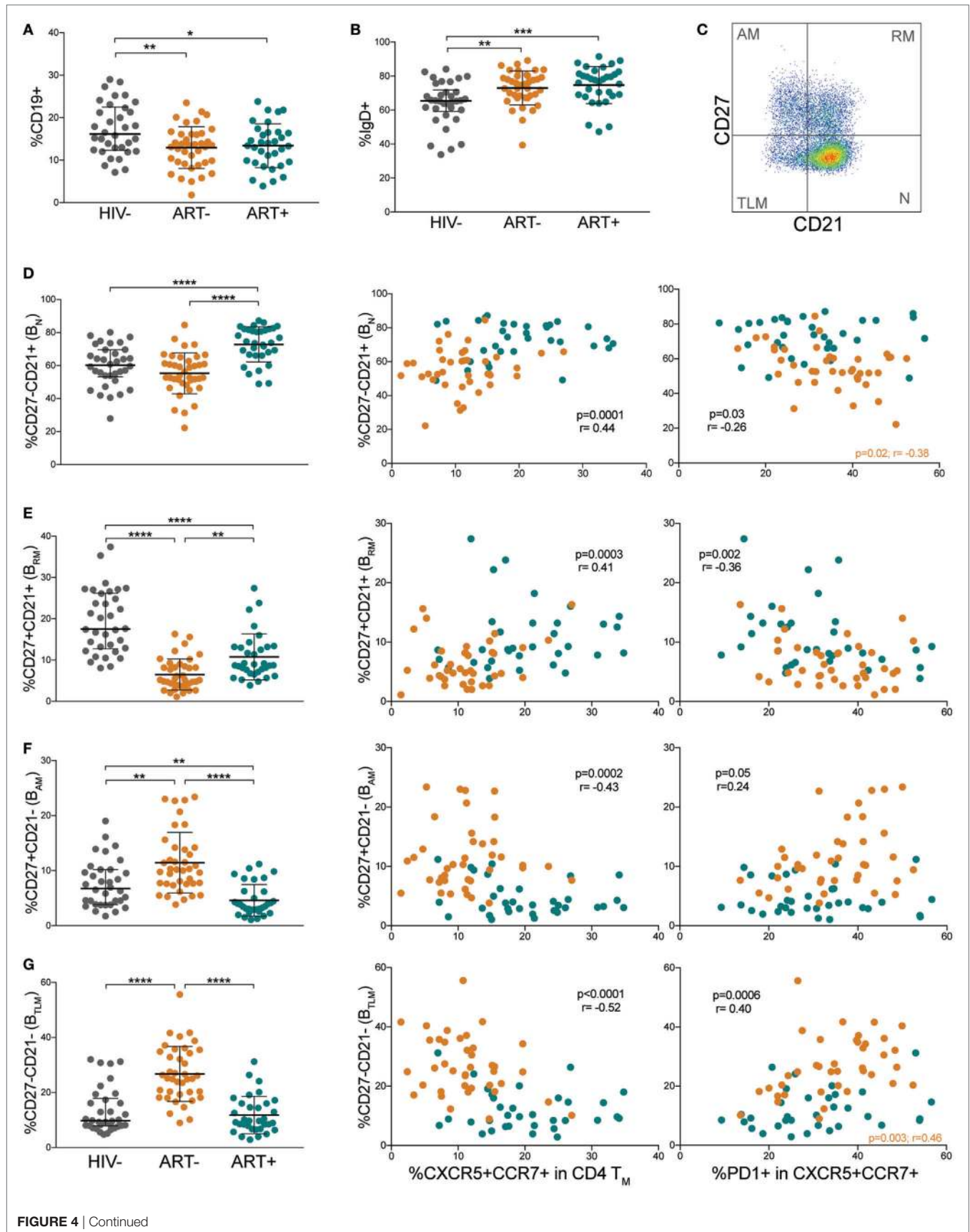


FIGURE 4 | Continued

FIGURE 4 | Differentiated B cell populations correlate with low memory peripheral Tfh (pTfh) cells expressing high programmed cell death protein 1 (PD-1) levels. Comparisons of (A) total B cell and (B) IgD+ B cell levels in HIV-, ART-, and ART+ children. (C) FACS plot showing representative gating to identify B cell differentiation subsets by CD21 and CD27. Plot shown is gated on CD19+ lymphocytes. Comparisons between (D) CD27-CD21+ naïve (B_N), (E) CD27+ CD21+ resting memory (B_{RM}), (F) CD27+ CD21- activated memory (B_{AM}), and (G) CD27-CD21- tissue-like memory (B_{TLM}) B cell subsets in HIV-, ART-, and ART+ and their correlations with total and PD-1+ memory pTfh cell frequencies in ART- (orange) and ART+ (blue) children. Significant p values are shown for statistical analysis of HIV+ (black), ART- (orange), and ART+ (blue) groups (**** $p < 0.0001$, *** $p < 0.001$, ** $p < 0.01$, and * $p < 0.05$).

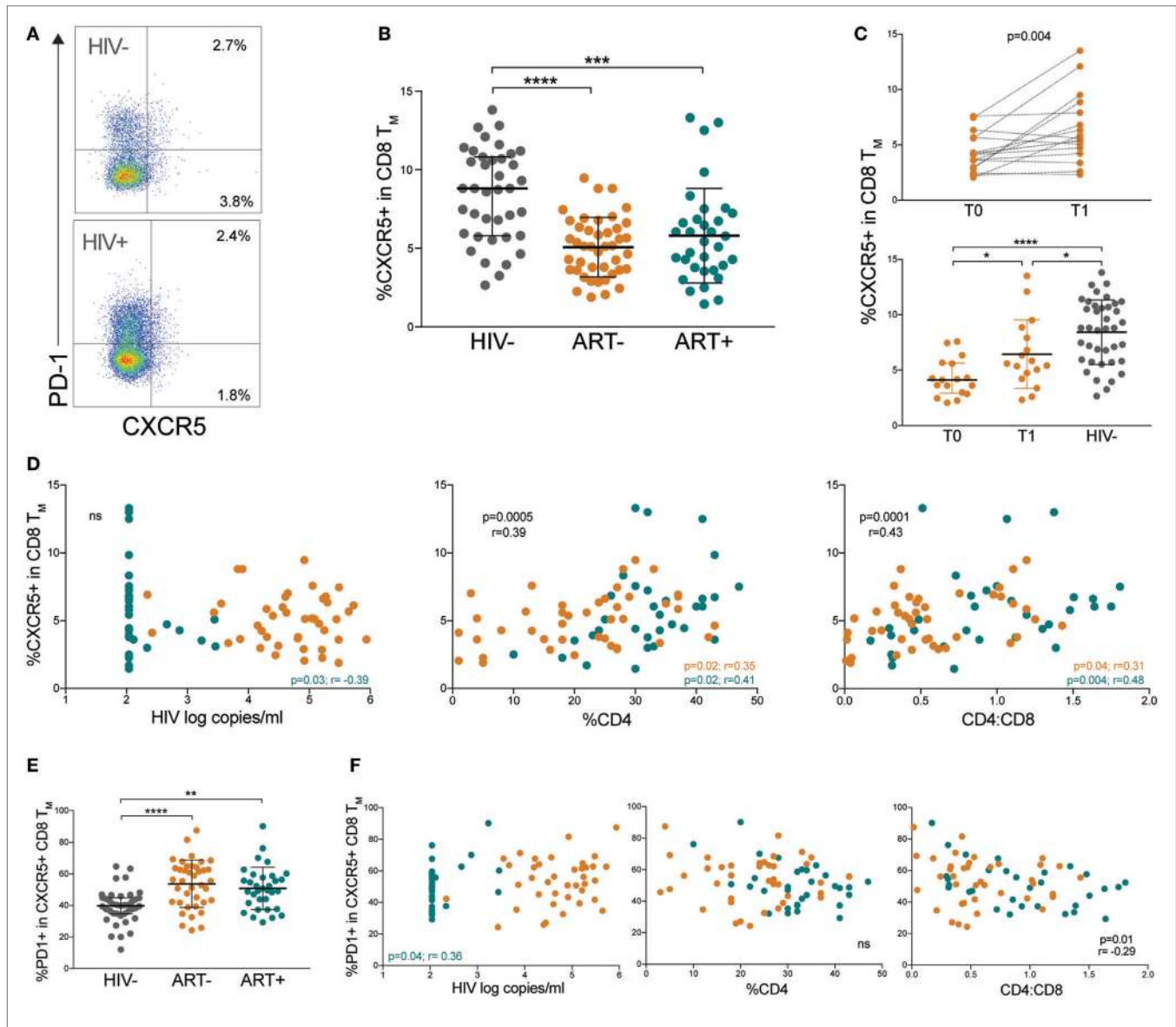


FIGURE 5 | HIV+ children have low CXCR5+ memory CD8 T cells with elevated programmed cell death protein 1 (PD-1). (A) FACS plots showing representative gating to identify memory pTfh cells as the total CXCR5+ population in memory CD8 T cells and PD-1 expression in an HIV- and HIV+ subject. Plots shown were gated within total memory CD8 T cells. (B) Comparison of CXCR5+ cells within total CD8+ memory T cells in HIV-, ART-, and ART+ children. (C) Prospective analysis of memory pTfh in ART- subjects before (T0) and ~12 months after antiretroviral treatment (T1). The second plot compares memory pTfh cell frequencies between ART- subjects at T0 and T1 and HIV- subjects. (D) Correlations between memory pTfh cell percentages and HIV log copies/mL, %CD4+ T cells, and CD4:CD8 ratios in HIV+ children (ART- in orange and ART+ in blue). (E) PD-1 expression on memory pTfh cells in HIV-, ART-, and ART+ subjects. (F) Correlation between PD-1+ memory pTfh cell frequencies and HIV log copies/mL, %CD4+ T cells, and CD4:CD8 ratios in HIV+ children. Significant p values are shown for statistical analysis of HIV+ (black), ART- (orange), and ART+ (blue) groups (**** $p < 0.0001$, *** $p < 0.001$, ** $p < 0.01$, and * $p < 0.05$).

Supplementary Material). We also examined PD-1 expression on memory pTfc cells and found that memory pTfc cells in HIV+ children expressed higher levels of PD-1 compared with HIV- children (ART-: $p < 0.0001$, ART+: $p = 0.001$; **Figure 5E**). In HIV+ children, PD-1 expression on memory pTfc cells inversely correlated with CD4:CD8 ratios ($p = 0.01$, $r = -0.29$), but did not correlate with %CD4 or viral load (**Figure 5F**). In ART+ subjects, HIV viremia correlated negatively with memory pTfc cell frequency ($p = 0.03$, $r = -0.39$; **Figure 1D**) and directly with PD-1 levels on memory pTfc cells ($p = 0.04$, $r = 0.36$; **Figure 5F**). Memory pTfc cell frequencies and their PD-1 expression did not correlate with CD38+HLA-DR+ CD4 or CD8 T cells or sCD163 plasma levels in HIV+ or HIV- children with the exception of a direct correlation between PD-1+CXCR5+ CD8 T_M and CD38+HLA-DR+ CD8 T cells in HIV+ children (Figures S4B,C in Supplementary Material).

DISCUSSION

We demonstrated that untreated children with perinatal HIV infection aged 5–18 years have significantly lower memory pTfh cell frequencies compared with HIV-negative children. Low memory pTfh levels increased with antiretroviral treatment but failed to normalize. In ART+ children, treatment initiation at younger ages predicted preserved pTfh levels. HIV+ children had higher PD-1 expression on pTfh cells regardless of treatment status. Furthermore, lower memory pTfh cells with increased PD-1 expression correlated with worsening HIV disease and an activated and differentiated B cell profile in HIV+ children. Last, HIV+ children have decreased proportions of memory pTfc cells with high PD-1 expression.

In our cohort, low memory pTfh cell frequencies correlated with decreased %CD4 and CD4:CD8 ratios and increased HIV viral load, which may reflect preferential infection of Tfh cells by HIV (14). Muema et al. similarly reported that CXCR5+ CD4 T cells correlated with %CD4 in HIV+ children, yet Bamford et al. failed to find any correlation between pTfh cell frequencies and clinical variables in children. This difference may relate to treatment status, as in our cohort, where these correlations were no longer significant when limited to only ART+ children. While the mechanism of pTfh cell depletion in HIV is not well understood, it is possible that like tissue-resident Tfh cells, pTfh cells are preferentially HIV-infected and killed. It is also plausible that pTfh cells in HIV+ subjects are ill-maintained as a result of impaired crosstalk with B cells, as Tfh and B cells need constant communication *via* co-stimulatory signals to maintain a homeostatic and healthy immune system (2, 16). Alternatively, Tfh cells may be chronically activated and subsequently sequestered in the LNs, depleting levels in the peripheral blood as shown in SIV (34). While Pallikkuth et al. reported a reversible depletion of CXCR5+ cells within T_{CM} in adults with HIV (21), the recovery of pTfh cells with antiretroviral therapy in children is previously unreported. Treatment initiation raised pTfh cell frequencies in ART- subjects, but failed to restore them to normal levels within one year. However, our ART+ subjects had pTfh cell frequencies similar to HIV- children. This may be due to longer duration of antiretroviral treatment or younger age at treatment initiation,

which predicted higher pTfh levels. We speculate that with early antiretroviral treatment, HIV+ children may be able to recover memory pTfh cells, in accordance with the recent recommendation from the World Health Organization to start treatment at the time of HIV diagnosis (35).

Programmed cell death protein 1 is a classic marker of functional Tfh cells in the lymphoid tissue of healthy adults and children, where PD-1/PD-L1 interactions in the GC are crucial for plasma cell differentiation (36). However, there is some uncertainty as to the role of PD-1 on circulating Tfh cells. PD-1 is a co-stimulatory molecule; it is absent on quiescent pTfh cells, expressed on follicular regulatory T (Tfr) cells, and co-expressed with ICOS on activated pTfh cells (37). Interestingly, we demonstrated PD-1 expression on memory pTfh cells was elevated in all HIV+ children regardless of treatment status, and corresponded with worsening HIV disease progression. Moreover, in ART+ children, PD-1 expression correlated with lower CD4 percentages and CD4:CD8 ratios and elevated CD4 T cell activation despite treatment. This indicates that while memory pTfh frequencies recover with antiretrovirals, these cells may still be qualitatively defective, with high PD-1 acting as a potentially pathogenic marker, as has been suggested by previous studies on HIV-specific CD4 (38) and CD8 (39) T cells. Alternatively a portion of PD-1+ pTfh cells may be Tfr cells with suppressive functions that account for low pTfh cell frequencies (40). Elevated PD-1 expression on pTfh cells correlated with increasing CD38+HLA-DR+ CD4 and CD8 T cells, suggesting PD-1+ pTfh cells may be activated Tfh cells associated with inflammation in the adaptive immune system. Interestingly, Pallikkuth et al. reported that CD38+HLA-DR+ expression on pTfh cells decreased after 48 weeks of treatment, but was still significantly higher than healthy controls (21). This activated pTfh cell state likely contributes to their susceptibility as a target for HIV infection and may be linked to high PD-1 expression.

T follicular helper cells also localize in the Peyer's patches of the small intestine. Because there are significant disruptions to the intestinal mucosa during HIV infection, we examined the relationship between Tfh cells and gut-homing receptor $\alpha_4\beta_7$ and I-FABP (41). It was previously shown that I-FABP is increased in perinatally HIV-infected children (42). We found that low memory pTfh cell frequencies in HIV+ subjects correlated with higher plasma I-FABP and lower β_7 + memory CD4 T cell levels. One explanation may be that with worsening gut mucosal disruption, pTfh cells are trafficked to the gut. Localization to the gut may also account for lower circulating pTfh cells during HIV infection. Although we did not co-stain for CXCR5 and β_7 together, pTfh cells likely co-express β_7 to mediate homing to the intestine.

It has been well documented that memory B cell populations and the quality of B cell responses are substantially impaired in HIV+ adults and children (43). More recent reports demonstrate that inadequate B cell help by HIV-infected Tfh cells results in perturbed B cell differentiation and dysregulated antibody production (16, 17). In addition, dysfunctional Tfh cells activate non-specific B cells and lead to hypergammaglobulinemia characteristic of HIV infection (34, 40). Prior groups have shown decreased B_N and B_{RM} cell subsets, as well as expanded B_{AM} and B_{TLM} B cell subsets in HIV+ children (18–20). In our study, we had similar

findings—total B cells were diminished and IgD+ B cells were elevated in HIV-infected children compared with healthy controls. We also demonstrated that B_N were increased in ART+, B_{RM} were low in HIV+, and B_{AM} and B_{TLM} were high in HIV+ compared with healthy controls. While pTfh cell proportions were significantly decreased in the blood, it is possible that with the accumulation of Tfh cells in the LNs, overstimulation by GC Tfh cells in the B cell follicles leads to a shift toward a more differentiated and exhausted B cell state. Moreover, lower total B cells and elevated IgD frequencies in HIV+ children suggest a general insult to the B cell compartment and a defect in Tfh cell function to induce class-switching in memory B cells. Decreased pTfh cells with potentially impaired B cell function may preclude effective HIV antibody responses. Indeed, prior studies report preserved pTfh cells in subjects with broadly neutralizing HIV-specific antibody responses (15, 44). Low pTfh cell frequency was closely linked to a differentiated B cell state in HIV+ children but not when separated into ART- and ART+ groups, suggesting antiretroviral treatment may restore the balance of Tfh cells with B cell differentiation.

Finally, Tfc cells are a novel CD8 T cell subset expressing CXCR5. Tfc cells have been studied in the blood and LN of SIV+ primate models (45, 46), the LNs of LCMV mouse models (33), as well as the blood, tumors, and LN of adult humans (32, 33, 47–49). Multiple groups reported Tfc cells have similar B cell follicle homing abilities to Tfh cells, and the potential to control viral infection by eliminating infected T cells and B cells in the follicle. He et al. reported that HIV-specific Tfc cells were present in the blood of chronically infected adults, and pTfc cells inversely correlated with HIV viral load prior to ART (33). More recently, Jiao et al. reported HIV+ adults had increased CXCR5+ CD8 T cells with high PD-1 expression, which negatively correlated with HIV disease progression (47). To the best of our knowledge, pTfc cell populations in children were not previously studied. HIV+ children had irreversibly depleted CXCR5+ CD8 T_M cells. Notably, antiretroviral treatment raised memory pTfc cell levels but failed to normalize them. As such, pTfc cells directly correlated with %CD4 and CD4:CD8 ratios regardless of treatment status. PD-1 expression was elevated on memory pTfc cells in HIV+ children and negatively correlated with CD4:CD8 ratios and positively associated with CD38+HLA-DR+ CD8 T cells. Interestingly, whereas Jiao et al. concluded CXCR5+ CD8 T cells with high PD-1 expression were highly functional and associated negatively with disease progression, our data demonstrated an association with CD4:CD8 ratios, but not with viremia or CD4 percentages. Our opposing findings may reflect differences in a pediatric cohort or our separate gating strategy on CD8 memory rather than total CD8 T cells.

In conclusion, we demonstrated a marked decrease in peripheral memory Tfh frequencies in untreated children with perinatal HIV infection. These memory pTfh cells increased with antiretroviral therapy but failed to normalize within 1 year. Treatment initiation at younger ages predicted greater recovery of this population. HIV+ children have high PD-1 expression on memory pTfh cells regardless of treatment status. Low memory pTfh cell frequencies with high PD-1 levels correlate with worsening HIV disease status as well as innate and adaptive immune activation. Furthermore, B cell subpopulations are skewed

toward a differentiated and exhausted profile, and coincide with decreased memory pTfh cells in HIV+ children. Finally, memory pTfc cells are depleted in HIV+ children. This perturbed memory pTfh cell population may contribute to weak vaccine and HIV-specific antibody responses in HIV+ children. Together, these findings have important implications for ongoing pediatric HIV cure and vaccine strategies.

ETHICS STATEMENT

This study was carried out in accordance with the recommendations of New York University Institutional Review Board and Kenyatta National Hospital/University of Nairobi Ethical Review Committee. The protocol was approved by the New York University Institutional Review Board and Kenyatta National Hospital/University of Nairobi Ethical Review Committee. All subjects gave written informed consent in accordance with the Declaration of Helsinki.

AUTHOR CONTRIBUTIONS

BM analyzed flow cytometry data, drafted the manuscript and figures. MM collected and processed samples and managed data. FM recruited patients and recorded clinical data. AA provided input to study design and oversaw recruitment site. AKravietz and TI performed immune phenotyping studies. MG performed sCD163 ELISA assay. PA performed I-FABP ELISA assay. AKhaitan, WB, and DU conceptualized the study, designed experiments, and interpreted data. AKhaitan supervised the study and edited the manuscript.

ACKNOWLEDGMENTS

We are grateful for all of the children and families who participated in this study. We thank Aparna Alankar for critical reading and valuable suggestions. This study was funded by NIH grant 5K08AI093235-02 to AKhaitan. It was also supported by Centers for Disease Control and Prevention (CDC) Co-operative Agreement (5U2GPS002063-03). The contents are solely the responsibility of the authors and do not necessarily represent the official views of the CDC.

SUPPLEMENTARY MATERIAL

The Supplementary Material for this article can be found online at <https://www.frontiersin.org/articles/10.3389/fimmu.2018.01901/full#supplementary-material>.

FIGURE S1 | Peripheral Tfh (pTfh) cell correlations with %CD4, CD4:CD8 ratios, and immune activation in HIV negative children. Correlations between memory pTfh cells and **(A)** %CD4 and CD4:CD8 ratios, **(B)** CD38+ HLA-DR+ CD4 and CD8 T cells, and **(C)** plasma sCD163 levels in HIV negative children.

FIGURE S2 | PD-1+ memory peripheral Tfh (pTfh) cell gating and correlations in HIV negative children. **(A)** FACS plots showing representative gating of PD-1+ memory pTfh cells in an HIV- and HIV+ subject. Plots shown were gated within the CXCR5+ CCR7+ CD4+ T_M population. Correlations are shown between PD-1+ memory pTfh cells and **(B)** %CD4 and CD4:CD8 ratios, **(C)** CD38+ HLA-DR+ CD4 and CD8 T cells, and **(D)** plasma sCD163 levels in HIV negative children.

FIGURE S3 | Correlations between memory peripheral Tfh (pTfh) cells and B cell subsets in HIV-negative children. Correlations between total and PD-1+ memory pTfh cells and **(A)** CD27–CD21+ naïve (B_N), **(B)** CD27+ CD21+ resting memory (B_{RM}), **(C)** CD27+ CD21– activated memory (B_{AM}), and **(D)** CD27–CD21– tissue-like memory (B_{TLM}) B cell subsets in HIV negative children.

FIGURE S4 | CXCR5+ memory CD8 T cell subsets and correlations with T cell activation. **(A)** Correlations between CXCR5+ CD8 T_M cell frequencies and %CD4 and CD4:CD8 ratios in HIV– children. Correlations between **(B)** total and **(C)** PD-1+ CXCR5+ CD8 T_M cell frequencies and CD38+ HLA-DR+ CD4 and CD8 T cells and plasma sCD163 levels in HIV– and HIV+ children (ART– in orange and ART+ in blue).

REFERENCES

- Schaerli P, Willmann K, Lang AB, Lipp M, Loetscher P, Moser B. CXC chemokine receptor 5 expression defines follicular homing T cells with B cell helper function. *J Exp Med* (2000) 192(11):1553–62. doi:10.1084/jem.192.11.1553
- Crotty S. Follicular helper CD4 T cells (TFH). *Annu Rev Immunol* (2011) 29:621–63. doi:10.1146/annurev-immunol-031210-101400
- Good-Jacobson KL, Shlomchik MJ. Plasticity and heterogeneity in the generation of memory B cells and long-lived plasma cells: the influence of germinal center interactions and dynamics. *J Immunol* (2010) 185(6):3117–25. doi:10.4049/jimmunol.1001155
- Reinhardt RL, Liang HE, Locksley RM. Cytokine-secreting follicular T cells shape the antibody repertoire. *Nat Immunol* (2009) 10(4):385–93. doi:10.1038/ni.1715
- Yusuf I, Kageyama R, Monticelli L, Johnston RJ, Ditoro D, Hansen K, et al. Germinal center T follicular helper cell IL-4 production is dependent on signaling lymphocytic activation molecule receptor (CD150). *J Immunol* (2010) 185(1):190–202. doi:10.4049/jimmunol.0903505
- Chu Y, Wang F, Zhou M, Chen L, Lu Y. A preliminary study on the characterization of follicular helper T (Tfh) cells in rheumatoid arthritis synovium. *Acta Histochem* (2014) 116(3):539–43. doi:10.1016/j.acthis.2013.10.009
- Ma J, Zhu C, Ma B, Tian J, Baidoo SE, Mao C, et al. Increased frequency of circulating follicular helper T cells in patients with rheumatoid arthritis. *Clin Dev Immunol* (2012) 2012:827480. doi:10.1155/2012/827480
- Wang J, Shan Y, Jiang Z, Feng J, Li C, Ma L, et al. High frequencies of activated B cells and T follicular helper cells are correlated with disease activity in patients with new-onset rheumatoid arthritis. *Clin Exp Immunol* (2013) 174(2):212–20. doi:10.1111/cei.12162
- Le Coz C, Joubin A, Pasquali JL, Korganow AS, Dumortier H, Monneaux F. Circulating TFH subset distribution is strongly affected in lupus patients with an active disease. *PLoS One* (2013) 8(9):e75319. doi:10.1371/journal.pone.0075319
- Simpson N, Gatenby PA, Wilson A, Malik S, Fulcher DA, Tangye SG, et al. Expansion of circulating T cells resembling follicular helper T cells is a fixed phenotype that identifies a subset of severe systemic lupus erythematosus. *Arthritis Rheum* (2010) 62(1):234–44. doi:10.1002/art.25032
- Morita R, Schmitt N, Bentebibel SE, Ranganathan R, Bourdery L, Zurawski G, et al. Human blood CXCR5(+)CD4(+) T cells are counterparts of T follicular cells and contain specific subsets that differentially support antibody secretion. *Immunity* (2011) 34(1):108–21. doi:10.1016/j.immuni.2010.12.012
- He J, Tsai LM, Leong YA, Hu X, Ma CS, Chevalier N, et al. Circulating precursor CCR7(lo)PD-1(hi) CXCR5(+) CD4(+) T cells indicate Tfh cell activity and promote antibody responses upon antigen reexposure. *Immunity* (2013) 39(4):770–81. doi:10.1016/j.immuni.2013.09.007
- Locci M, Havenar-Daughton C, Landais E, Wu J, Kroenke MA, Arlehamn CL, et al. Human circulating PD-1+CXCR3–CXCR5+ memory Tfh cells are highly functional and correlate with broadly neutralizing HIV antibody responses. *Immunity* (2013) 39(4):758–69. doi:10.1016/j.immuni.2013.08.031
- Perreau M, Savoye AL, De Crignis E, Corpataux JM, Cubas R, Haddad EK, et al. Follicular helper T cells serve as the major CD4 T cell compartment for HIV-1 infection, replication, and production. *J Exp Med* (2013) 210(1):143–56. doi:10.1084/jem.20121932
- Cohen K, Altfeld M, Alter G, Stamatatos L. Early preservation of CXCR5+ PD-1+ helper T cells and B cell activation predict the breadth of neutralizing antibody responses in chronic HIV-1 infection. *J Virol* (2014) 88(22):13310–21. doi:10.1128/JVI.02186-14
- Cubas RA, Mudd JC, Savoye AL, Perreau M, van Grevenynghe J, Metcalf T, et al. Inadequate T follicular cell help impairs B cell immunity during HIV infection. *Nat Med* (2013) 19(4):494–9. doi:10.1038/nm.3109
- Lindqvist M, van Lunzen J, Soghoian DZ, Kuhl BD, Ranasinghe S, Kranias G, et al. Expansion of HIV-specific T follicular helper cells in chronic HIV infection. *J Clin Invest* (2012) 122(9):3271–80. doi:10.1172/JCI64314
- Bamford A, Hart M, Lyall H, Goldblatt D, Kelleher P, Kampmann B. The influence of paediatric HIV infection on circulating B cell subsets and CXCR5(+) T helper cells. *Clin Exp Immunol* (2015) 181(1):110–7. doi:10.1111/cei.12618
- Muema DM, Macharia GN, Olusola BA, Hassan AS, Fegan GW, Berkley JA, et al. Proportions of circulating follicular helper T cells are reduced and correlate with memory B cells in HIV-infected children. *PLoS One* (2017) 12(4):e0175570. doi:10.1371/journal.pone.0175570
- Bekele Y, Amu S, Bobosha K, Lantto R, Nilsson A, Endale B, et al. Impaired phenotype and function of T follicular helper cells in HIV-1-infected children receiving ART. *Medicine* (2015) 94(27):e1125. doi:10.1097/MD.0000000000001125
- Pallikkuth S, Sharkey M, Babic DZ, Gupta S, Stone GW, Fischl MA, et al. Peripheral T follicular helper cells are the major HIV reservoir within central memory CD4 T cells in peripheral blood from chronically HIV-infected individuals on combination antiretroviral therapy. *J Virol* (2016) 90(6):2718–28. doi:10.1128/JVI.02883-15
- Boswell KL, Paris R, Boritz E, Ambrozak D, Yamamoto T, Darko S, et al. Loss of circulating CD4 T cells with B cell helper function during chronic HIV infection. *PLoS Pathog* (2014) 10(1):e1003853. doi:10.1371/journal.ppat.1003853
- Pallikkuth S, Parmigiani A, Silva SY, George VK, Fischl M, Pahwa R, et al. Impaired peripheral blood T-follicular helper cell function in HIV-infected nonresponders to the 2009 H1N1/09 vaccine. *Blood* (2012) 120(5):985–93. doi:10.1182/blood-2011-12-396648
- Bekele Y, Yibeltal D, Bobosha K, Andargie TE, Lemma M, Gebre M, et al. T follicular helper cells and antibody response to hepatitis B virus vaccine in HIV-1 infected children receiving ART. *Sci Rep* (2017) 7(1):8956. doi:10.1038/s41598-017-09165-6
- Breitfeld D, Ohl L, Kremmer E, Ellwart J, Sallusto F, Lipp M, et al. Follicular B helper T cells express CXC chemokine receptor 5, localize to B cell follicles, and support immunoglobulin production. *J Exp Med* (2000) 192(11):1545–52. doi:10.1084/jem.192.11.1545
- Giorgi JV, Hultin LE, McKeating JA, Johnson TD, Owens B, Jacobson LP, et al. Shorter survival in advanced human immunodeficiency virus type 1 infection is more closely associated with T lymphocyte activation than with plasma virus burden or virus chemokine coreceptor usage. *J Infect Dis* (1999) 179(4):859–70. doi:10.1086/314660
- Guadalupe M, Reay E, Sankaran S, Prindiville T, Flamm J, McNeil A, et al. Severe CD4+ T-cell depletion in gut lymphoid tissue during primary human immunodeficiency virus type 1 infection and substantial delay in restoration following highly active antiretroviral therapy. *J Virol* (2003) 77(21):11708–17. doi:10.1128/JVI.77.21.11708-11717.2003
- Perruzza L, Gargari G, Proietti M, Fosso B, D'Erchia AM, Faliti CE, et al. T follicular helper cells promote a beneficial gut ecosystem for host metabolic homeostasis by sensing microbiota-derived extracellular ATP. *Cell Rep* (2017) 18(11):2566–75. doi:10.1016/j.celrep.2017.02.061
- Arthos J, Cicala C, Martinelli E, Macleod K, Van Ryk D, Wei D, et al. HIV-1 envelope protein binds to and signals through integrin alpha4beta7, the gut mucosal homing receptor for peripheral T cells. *Nat Immunol* (2008) 9(3):301–9. doi:10.1038/ni1566
- Lau E, Marques C, Pestana D, Santoalha M, Carvalho D, Freitas P, et al. The role of I-FABP as a biomarker of intestinal barrier dysfunction driven by gut microbiota changes in obesity. *Nutr Metab* (2016) 13:31. doi:10.1186/s12986-016-0089-7
- Quigley MF, Gonzalez VD, Granath A, Andersson J, Sandberg JK. CXCR5+ CCR7– CD8 T cells are early effector memory cells that infiltrate tonsil B cell follicles. *Eur J Immunol* (2007) 37(12):3352–62. doi:10.1002/eji.200636746

32. Leong YA, Chen Y, Ong HS, Wu D, Man K, Deleage C, et al. CXCR5(+) follicular cytotoxic T cells control viral infection in B cell follicles. *Nat Immunol* (2016) 17(10):1187–96. doi:10.1038/ni.3543
33. He R, Hou S, Liu C, Zhang A, Bai Q, Han M, et al. Follicular CXCR5-expressing CD8(+) T cells curtail chronic viral infection. *Nature* (2016) 537(7620):412–28. doi:10.1038/nature19317
34. Petrovas C, Yamamoto T, Gerner MY, Boswell KL, Wloka K, Smith EC, et al. CD4 T follicular helper cell dynamics during SIV infection. *J Clin Invest* (2012) 122(9):3281–94. doi:10.1172/JCI63039
35. WHO. *Consolidated Guidelines on the Use of Antiretroviral Drugs for Treating and Preventing HIV Infection: Recommendations for a Public Health Approach*. 2nd ed. Geneva, Switzerland: WHO (2016).
36. Good-Jacobson KL, Szumilas CG, Chen L, Sharpe AH, Tomayko MM, Shlomchik MJ. PD-1 regulates germinal center B cell survival and the formation and affinity of long-lived plasma cells. *Nat Immunol* (2010) 11:535. doi:10.1038/ni.1877
37. Schmitt N, Ueno H. Blood Tfh cells come with colors. *Immunity* (2013) 39(4):629–30. doi:10.1016/j.immuni.2013.09.011
38. D'Souza M, Fontenot AP, Mack DG, Lozupone C, Dillon S, Meditz A, et al. Programmed death 1 expression on HIV-specific CD4+ T cells is driven by viral replication and associated with T cell dysfunction. *J Immunol* (2007) 179(3):1979–87. doi:10.4049/jimmunol.179.3.1979
39. Trautmann L, Janbazian L, Chomont N, Said EA, Gimmig S, Bessette B, et al. Upregulation of PD-1 expression on HIV-specific CD8+ T cells leads to reversible immune dysfunction. *Nat Med* (2006) 12(10):1198–202. doi:10.1038/nm1106-1329b
40. Chowdhury A, Del Rio Estrada PM, Tharp GK, Tribble RP, Amara RR, Chahroudi A, et al. Decreased T follicular regulatory cell/T follicular helper cell (TFH) in simian immunodeficiency virus-infected rhesus macaques may contribute to accumulation of TFH in chronic infection. *J Immunol* (2015) 195(7):3237–47. doi:10.4049/jimmunol.1402701
41. Kato LM, Kawamoto S, Maruya M, Fagarasan S. Gut TFH and IgA: key players for regulation of bacterial communities and immune homeostasis. *Immunol Cell Biol* (2014) 92(1):49–56. doi:10.1038/icb.2013.54
42. Dirajlal-Fargo S. HIV positive youth who are perinatally infected have impaired endothelial function. *AIDS* (2017) 31(14):1917–24. doi:10.1097/QAD.0000000000001556
43. Amu S, Lavy-Shahaf G, Cagigi A, Hejdeman B, Nozza S, Lopalco L, et al. Frequency and phenotype of B cell subpopulations in young and aged HIV-1 infected patients receiving ART. *Retrovirology* (2014) 11:76. doi:10.1186/s12977-014-0076-x
44. Moody MA, Pedroza-Pacheco I, Vandergrift NA, Chui C, Lloyd KE, Parks R, et al. Immune perturbations in HIV-1-infected individuals who make broadly neutralizing antibodies. *Sci Immunol* (2016) 1(1):aag0851. doi:10.1126/sciimmunol.aag0851
45. Mylvaganam GH, Rios D, Abdelaal HM, Iyer S, Tharp G, Mavigner M, et al. Dynamics of SIV-specific CXCR5+ CD8 T cells during chronic SIV infection. *Proc Natl Acad Sci U S A* (2017) 114(8):1976–81. doi:10.1073/pnas.1621418114
46. Li S, Folkvord JM, Rakasz EG, Abdelaal HM, Wagstaff RK, Kovacs KJ, et al. Simian immunodeficiency virus-producing cells in follicles are partially suppressed by CD8+ cells in vivo. *J Virol* (2016) 90(24):11168–80. doi:10.1128/JVI.01332-16
47. Jiao YM, Yang HG, Huang HH, Tu B, Xing SJ, Mao L, et al. Dichotomous roles of programmed cell death 1 on HIV-specific CXCR5(+) and CXCR5(-) CD8(+) T cells during chronic HIV infection. *Front Immunol* (2017) 8:1786. doi:10.3389/fimmu.2017.01786
48. Xing J, Zhang C, Yang X, Wang S, Wang Z, Li X, et al. CXCR5(+)CD8(+) T cells infiltrate the colorectal tumors and nearby lymph nodes, and are associated with enhanced IgG response in B cells. *Exp Cell Res* (2017) 356(1):57–63. doi:10.1016/j.yexcr.2017.04.014
49. Bai M, Zheng Y, Liu H, Su B, Zhan Y, He H. CXCR5(+) CD8(+) T cells potently infiltrate pancreatic tumors and present high functionality. *Exp Cell Res* (2017) 361(1):39–45. doi:10.1016/j.yexcr.2017.09.039

Conflict of Interest Statement: The authors declare that the research was conducted in the absence of any commercial or financial relationships that could be construed as a potential conflict of interest.

Copyright © 2018 McCarty, Mwamzuka, Marshad, Generoso, Alvarez, Ilmet, Kravietz, Ahmed, Borkowsky, Unutmaz and Khaitan. This is an open-access article distributed under the terms of the Creative Commons Attribution License (CC BY). The use, distribution or reproduction in other forums is permitted, provided the original author(s) and the copyright owner(s) are credited and that the original publication in this journal is cited, in accordance with accepted academic practice. No use, distribution or reproduction is permitted which does not comply with these terms.