

Electronic Supplementary Information

Low-temperature plasma-assisted growth of germanium nanorods

Yu-Cian Wang and I-Chen Chen*

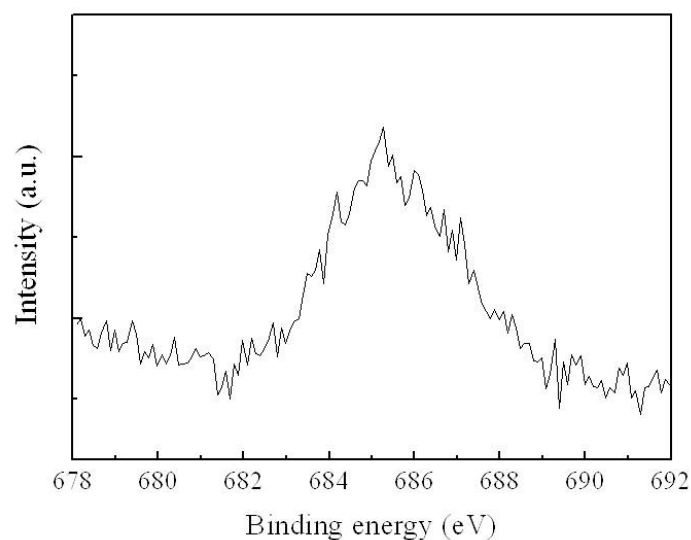


Fig. S1 F 1s XPS spectrum of Ge-NRs grown on an ITO glass substrate.

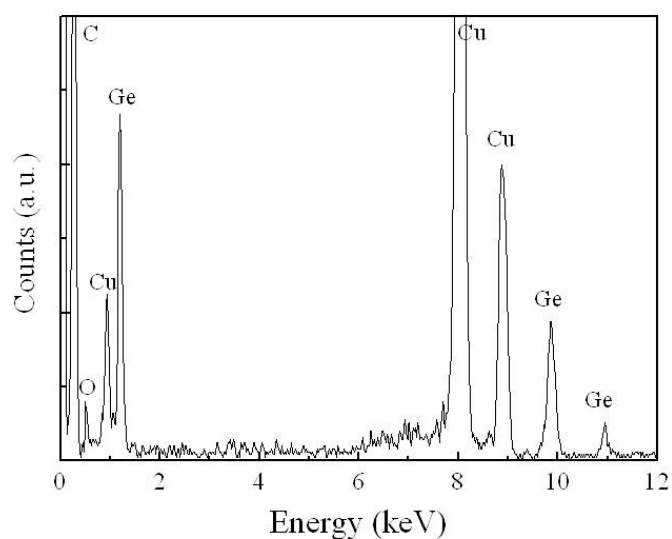


Fig. S2 EDS spectrum collected from the tip of an as-grown Ge-NR. The Cu and C signals come from the holey carbon-coated copper grid, and the O signal originates from the surface oxidation of Ge surface after being exposed to air.