

Magnetic Control of Particle Injection in Plasma Based Accelerators

J. Vieira,¹ S. F. Martins,¹ V. B. Pathak,¹ R. A. Fonseca,^{1,2} W. B. Mori,³ and L. O. Silva¹

¹GoLP/Instituto de Plasmas e Fusão Nuclear-Laboratório Associado, Instituto Superior Técnico, 1049-001 Lisboa, Portugal

²DCTI/ISCTE Lisbon University Institute, 1649-026 Lisbon, Portugal

³Department of Physics and Astronomy, UCLA, Los Angeles, California 90095, USA

(Received 30 September 2010; published 31 May 2011)

The use of an external transverse magnetic field to trigger and to control electron self-injection in laser- and particle-beam driven wakefield accelerators is examined analytically and through full-scale particle-in-cell simulations. A magnetic field can relax the injection threshold and can be used to control main output beam features such as charge, energy, and transverse dynamics in the ion channel associated with the plasma blowout. It is shown that this mechanism could be studied using state-of-the-art magnetic fields in next generation plasma accelerator experiments.

DOI: 10.1103/PhysRevLett.106.225001

PACS numbers: 52.38.Kd, 41.75.Jv, 52.25.Xz, 52.65.Rr

Plasma based acceleration (PBA) has the potential to lead to a future generation of compact particle accelerators [1–3] for high energy physics applications, and also to compact light sources for medical applications [4] and material science. In state-of-the-art laser wakefield acceleration (LWFA) experiments, relativistic plasma waves capable to self-inject and accelerate 1 GeV class electrons [5] are excited in the so-called bubble or blowout regime [6,7]. In contrast, the self-injection conditions are not easily met in current plasma wakefield acceleration (PWFA) experiments, since the bubble radius is not as large. Nevertheless, in recent PWFA experiments, some electrons had their energy doubled from 42 to 85 GeV in 85 cm [8].

The output controllability is a major challenge for the use of PBA in several applications. To this end, new concepts have emerged such as counter- and crosspropagating laser pulses for LWFA [9], short plasma down-ramps [10], ionization induced trapping [11], and evolving bubbles [12]. With these methods, the charge and energy of self-injected bunches can be adjusted.

In this Letter we propose a novel scheme that uses static transverse magnetic fields to trigger and to control the self-injection in the LWFA or PWFA. The trapping occurs off axis leading to synchronized betatron oscillations, which could improve the quality of x-ray emission by the magnetically injected electrons [13]. The output energies can also be controlled by adjusting the longitudinal injection position. The scaling law for the magnetic field induced injection is determined with the appropriate Hamiltonian, and illustrated with particle-in-cell (PIC) simulations in OSIRIS [14]. For the next generation PBAs aiming at producing multi-10 GeV electron bunches in controlled injection scenarios [2,3], our scheme requires external B fields as low as 5 T.

The use of magnetic fields in PBAs was first explored in the so-called surfatron [15]. The role of magnetic fields in PBAs was further examined in Ref. [16], while Ref. [17]

showed that external longitudinal magnetic fields increase the trapped charge. Our scheme uses an external magnetic field perpendicular to the driver velocity to generate controlled off-axis injection bursts.

Self-injection can be investigated through the Hamiltonian $H = \sqrt{m_e^2 c^4 + (\mathbf{P} + e\mathbf{A}/c)^2} - e\phi$ for background electrons, where $\mathbf{P} = \mathbf{p} - e\mathbf{A}$ and \mathbf{p} are the canonical and linear momenta, $-e$ the charge of the electron, and \mathbf{A} and ϕ the plasma vector and scalar potentials. Unless stated, normalized units are adopted henceforth. Durations are normalized to the inverse of the plasma frequency $\omega_p = \sqrt{4\pi n_0 e^2 / m_e}$, lengths to c/ω_p , velocities to c , momenta to $m_e c$, and charge to e , with n_0 the background plasma density, and m_e the electron mass. Vector and scalar potentials are normalized to $e/m_e c^2$ and to $e/m_e c$. The normalized B field is given by $\omega_c/\omega_p = e|\mathbf{B}|/m_e \omega_p$, and ω_c is the cyclotron frequency.

In the comoving frame ($x = x, y = y, \xi = v_\phi t - z, s = z$), the Hamiltonian is $\mathcal{H} = H - v_\phi P_\parallel$, where v_ϕ is the plasma wave phase velocity, and P_\parallel is the longitudinal canonical momentum. In this frame $d\mathcal{H}/d\xi = (1 - v_z/v_\phi)^{-1}(\mathbf{v} \cdot \partial\mathbf{A}/\partial s - \partial\phi/\partial s)$ [11,18], where v_z is the electron velocity parallel to the driver velocity. Thus, defining the wake potential as $\psi = \phi - v_\phi A_z$ [18], and since $v_z = v_\phi$ for trapped electrons, $1 + \Delta\psi = \gamma/\gamma_\phi^2 - \Delta\mathcal{H}$ at the instant of injection, where $\gamma_\phi = (1 - v_\phi^2)^{-1/2}$ is the relativistic factor of the bubble phase velocity, and $\Delta\psi = \psi_f - \psi_i$ ($\Delta\mathcal{H} = \mathcal{H}_f - \mathcal{H}_i$) is the difference between the ψ (\mathcal{H}) of the electron at its trapping and initial position. This trapping condition is consistent with the conditions from other electron self-injection mechanisms [11,12,18,19], and is also valid when external fields are present. Considering that ψ^{ext} is related to the external field, and denoting the plasma wave contribution to ψ by ψ^{pl} , the trapping condition becomes $1 + \Delta\psi^{\text{pl}} = \gamma/\gamma_\phi^2 - \Delta\mathcal{H} - \Delta\psi^{\text{ext}}$.

The trapping condition derived above shows that self-injection can be relaxed by the presence of external fields. In the absence of external fields ($\Delta\psi^{\text{ext}} = 0$) and in the quasistatic approximation [19], such that $\Delta\mathcal{H} = 0$, self-injection occurs when $\Delta\psi^{\text{pl}}$ approaches $\Delta\psi^{\text{pl}} = -1$ [11,19,20]. This condition can be relaxed (i.e., lower $|\Delta\psi|$ can still lead to injection) during the expansion of the wakefield [12] which contributes with finite $\Delta\mathcal{H}$. In the presence of external fields, self-injection may be controlled by acting on $\Delta\mathcal{H}$ and $\Delta\psi^{\text{ext}}$. To illustrate the latter mechanism, an external constant magnetic field B_y pointing in the positive y direction is considered, and described as $\psi^{\text{ext}} = -A_z^{\text{ext}} = B_y x$. We also assume that the B field rises from zero to B_{y0} in a length L^{ramp} , is constant for L^{flat} , and vanishes in L^{ramp} .

We start by investigating trapping in the uniform B field region, for which the trapping condition reduces to $1 + \Delta\psi^{\text{pl}} = -B_{y0}\Delta x$ when $\gamma_\phi \rightarrow \infty$, and where $\Delta x = x_f - x_i$ is the difference between the final and initial electron position in the x direction. A conservative threshold B field for injection can be retrieved assuming that $\Delta\psi^{\text{pl}} = 0$, and that the wake is relatively unperturbed by the B field (i.e., $\omega_c/\omega_p \ll 1$). In LWFA matched propagation regimes, the B -injected electrons originate at a distance $x_i \simeq r_b$ from the axis, and they are trapped with $x_f \simeq 0$ [20]. Thus, for a trapped electron $\Delta x \simeq -r_b \sin\theta = -2\sqrt{a_0} \sin\theta$, where $r_b = 2\sqrt{a_0}$ is the blowout radius [7], θ the angle between the plane of the trajectory of the electron with the B field, and a_0 is the normalized laser vector potential. Then, the threshold B field for injection becomes

$$B^t = \frac{1}{2 \sin\theta \sqrt{a_0}}. \quad (1)$$

Equation (1) illustrates that the external B field leads to localized off-axis injection in a well-defined angular region. We note, however, that since typically $\Delta\psi^{\text{pl}} \lesssim -1$, the assumption $\Delta\psi^{\text{pl}} = 0$ significantly overestimates the required B field for injection. In fact as we will show in 3D OSIRIS PIC simulations of the PWFA, the threshold B field for injection is significantly smaller and can be within reach of current technology [21].

The localized injection in the transverse x - y space can also be interpreted in terms of the Larmor rotation of the plasma electrons. Since backward moving electrons in the z direction rotate anticlockwise for $B_{y0} > 0$, they are bent towards the axis for $x > 0$ [note that the driver propagates along $(x = 0, y = 0, z)$], entering the accelerating and focusing region of the bubble with larger p_{\parallel} , thus facilitating self-injection. For $x < 0$, electrons move away from the axis, preventing injection. Furthermore, the electrons moving in the plane $x \simeq 0$ are much less disturbed. Hence, the B field leads to asymmetric trapping which occurs off-axis in a defined angular region.

If $B_y \gg B^t$ the plasma wave structure can be significantly modified, which may reduce $|\Delta\psi|$ and $|\Delta x|$, and suppress injection. In such cases, however, injection can

still occur because the B field depends on ξ [contribution of $\Delta\mathcal{H}$ and $\Delta\psi^{\text{ext}}$ to the trapping condition]. Specifically, as the B field begins to decrease in the down-ramp region then ψ^{pl} returns to its unperturbed state, and r_b gets larger, effectively lowering v_ϕ . In the down-ramp B field regions injection also occurs off axis and in an angular region that is identical to that of the self-trapping in uniform B field regions. We stress that, for the scenarios presented here, the majority of the charge is self-injected in the B field down-ramps. This is the most important mechanism in the present configuration, although for sufficiently large L^{ramp} the mechanisms associated with constant B fields may also lead to self-injection.

According to the trapping condition in the presence of external fields, higher injection rates occur for higher plasma wave expansion rates, or equivalently for higher B field down-ramp gradients, i.e., for shorter ramps or higher B 's which provide a larger $|\mathbf{v} \cdot \partial\mathbf{A}/\partial s - \partial\phi/\partial s|$ and hence large $|\Delta\mathcal{H}|$. Physically, both tend to lower the phase velocity due to the accordion effect [22]. We note that L^{ramp} can change by modifying the spatial extent of the B field, and by varying n_0 .

In order to illustrate this controlled injection mechanism we have performed a set of 3D PIC simulations in OSIRIS [14]. We first consider the LWFA scenario, illustrated in Fig. 1. The simulation box with dimensions of $24 \times 24 \times 12(c/\omega_p)^3$ moves at the speed of light, and is divided into $480 \times 480 \times 1200$ cells with $1 \times 1 \times 2$ particles per cell. The ions form an immobile neutralizing background fluid. A linearly polarized laser pulse with central frequency $\omega_0/\omega_p = 20$ was used, with a peak vector potential of $a_0 = 3$, a duration $\omega_p \tau_{\text{FWHM}} = 2\sqrt{a_0}$, and a transverse spot size (W_0) matched to the pulse duration such that $W_0 = c\tau_{\text{FWHM}}$ [2]. The plasma density is of the form $n = n_0(z) \times (1 + \Delta n r^2)$ for $r < 10c/\omega_p$ and $n = 0$ for $r > 10c/\omega_p$ with $\Delta n = 4/W_0^4$ being the linear guiding condition, and where $n_0(z)$ is a linear function of z which increases from $n_0 = 0$ to $n_0 = 1$ in $50c/\omega_p$ ensuring a smooth vacuum-plasma transition. At the point where the plasma density reaches its maximum value, a constant external field pointing in the positive y direction rises with $B_y^{\text{ext}} = \omega_c/\omega_p = 0.6 \sin^2[\pi(z - z_0)/(2L^{\text{ramp}})]$, with $L^{\text{ramp}} = 10c/\omega_p$ and $z_0 = 62c/\omega_p$, it is constant and equal to $B_{y0}^{\text{ext}} = 0.6$ for $L^{\text{flat}} = 40c/\omega_p$ and drops back to zero with $B_y^{\text{ext}} = 0.6 \sin^2[\pi(z - z_1)/(2L^{\text{ramp}})]$ with $z_1 = L^{\text{ramp}} + L^{\text{flat}} + z_0$. For a laser with central wavelength of 800 nm, these parameters correspond to a 0.473 J laser pulse, with $W_0 = 8.68 \mu\text{m}$, and $\tau_{\text{FWHM}} = 28.9$ fs. Moreover, $n_0 = 4.5 \times 10^{18} \text{ cm}^{-3}$, and $B_{y0} = 407$ T. While this simulation clearly identified key physical mechanisms associated with the B field injection using reasonable computational requirements, additional 2D simulations (not shown) revealed that self-injection assisted by magnetic fields can be achieved in the LWFA within state-of-the-art magnetic field generation technology [21].

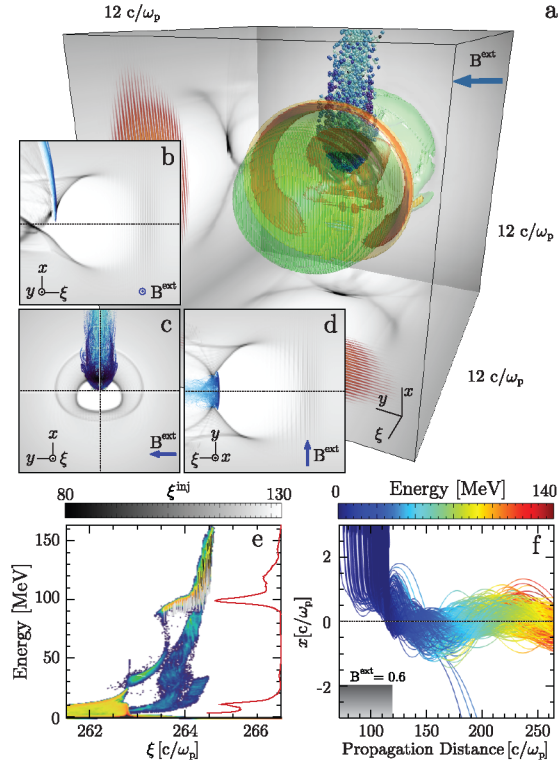


FIG. 1 (color online). 3D OSIRIS simulation of a magnetized LWFA. (a) Electron density isosurfaces in the uniform B field region. (b)–(d) Density profile associated with the $y = 0$, $\xi = 0$, and $x = 0$ planes of (a) revealing the off-axis injection. Self-injected electrons (darker dots) are closer to the bubble axis, while the electrons farther from the bubble axis escape from the trapping region (lighter dots). (e) Phase space of the plasma electrons and spectrum (solid line), showing a quasimonochromatic ($\sim 6\%$ FWHM spread) electron bunch. (f) Trajectories of the self-injected beam particles, with the propagation axis shown by the dashed line. The B field profile is also represented.

Figure 1(a) shows the electron density, the laser projections, and electrons above 10 MeV (spheres). Each quantity is plotted when the front of the laser has just left the B field, at $\omega_p t = 120$, when the laser evolution [23] can be neglected, corresponding to the wake lying entirely within the down-ramp region. Figures 1(b)–1(d) show how the B field can lead to self-injection. Although the B field can still decrease r_b in the y - ξ , $x = 0$ plane, the wake remains symmetric. This can be seen as follows: when an electron is expelled sideways the B field provides no extra force. However, as the B field within the wake bends the trajectory backwards in z , the external B field (in y) produces a force in the negative x direction. This motion then provides a force in the positive z thereby decreasing r_b . On the other hand, the wake is asymmetrically modified in the x - z ($y = 0$) plane. Electrons moving backwards in z feel a downward force from the external B field. This external force reinforces (reduces) the focusing force for electrons with $x > 0$ ($x < 0$). This leads to the sheath structure seen in Fig. 1(a). As predicted from the trapping condition,

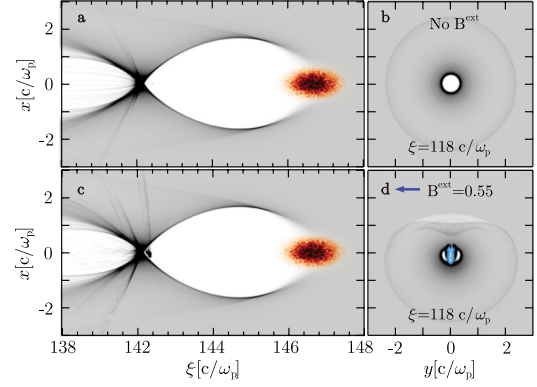


FIG. 2 (color online). 3D OSIRIS simulation of B injection in PWFA (2D slices represented). (a) Electron density and (b) transverse density slice at the back of the bubble in the unmagnetized case. (c) Electron density after the B field down-ramp and (d) transverse density slice at the back of the bubble, revealing the trapped particles.

electrons with $\Delta\psi^{\text{ext}} < 0$ or equivalently $\Delta x < 0$ are more easily trapped, thus guaranteeing off-axis injection.

The localized trapping provided by the external B field is also seen in Figs. 1(a)–1(c) where all electrons above 10 MeV are shown as spheres (dots) at $\omega_p t = 120$. The electrons all reside with $x > 0$ and are localized in y as well. Electrons which eventually reside outside the wake (large x) are actually defocused by the external B field. These energetic electrons now move forward in z such that the external B field leads to a force in the positive x direction. Electrons outside the wake do not feel the wake focusing force and therefore are lost.

In the B field down-ramp, r_b increases, effectively decreasing v_ϕ , and leading to an additional and stronger injection. The energy spectrum of the electrons at later propagation distances is shown in Fig. 1(e), revealing that a quasimonochromatic beam is formed at $\omega_p t = 270$. The total charge of electrons above 50 MeV is 0.15 nC. The streaks in Fig. 1(e) correspond to the trajectories in energy- ξ phase space, and are plotted for electrons above 50 MeV during the time between 240 – $270\omega_p^{-1}$. The color corresponds to their initial value of ξ (ξ_{inj}), then showing that most electrons originate in the down-ramp region $112 < \xi_{\text{inj}} < 122$. Figure 1(f) shows that self-injected electrons start with $x > 0$ forming a beam that has a centroid executing betatron oscillations.

In Fig. 2 this scheme is applied to PWFA. The energy of the electron beam driver is 30 GeV, and its density profile given by $n_b = n_{b0} \exp[-\mathbf{x}_\perp^2 / (2\sigma_\perp^2)] \exp[-\xi^2 / (2\sigma_z^2)]$, where $\sigma_\perp = 0.3c/\omega_p$, $\sigma_z = 0.5c/\omega_p$, and $n_{b0} = 8.89n_0$. For $n_0 = 10^{15} \text{ cm}^{-3}$, this corresponds to $\sigma_\perp = 50.4 \mu\text{m}$, $\sigma_z = 84 \mu\text{m}$, and to a total number of 3×10^{10} electrons, close to the SLAC electron beam. The simulation box is $12 \times 12 \times 16(c/\omega_p)^3$, divided into $480 \times 480 \times 640$ cells with $2 \times 2 \times 1$ particles per cell for the electron beam and background plasma. The B field profile is similar to the LWFA case with $B_{y0}^{\text{ext}} = 0.55\omega_c/\omega_p$. For $n_0 = 10^{15} \text{ cm}^{-3}$,

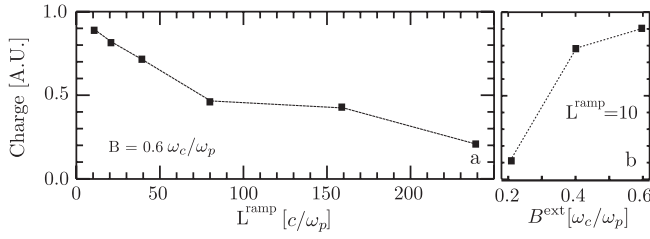


FIG. 3. Parameter scan for the self-injected charge in the first bucket retrieved from 2D simulations. (a) Down-ramp length scan, revealing that charge decreases with L^{ramp} . (b) Peak B field scan, revealing the charge increases with B_y^{ext} .

this corresponds to $L^{\text{flat}} = 6.8$ mm, $L^{\text{ramp}} = 1.7$ mm, and $B_{y0}^{\text{ext}} = 5.5$ T, within current technological reach [21].

Injection is absent in the unmagnetized PWFA [Fig. 2(a) and 2(b)]. In the magnetized case, we observed that self-injection occurs only in the B field down-ramp, leading to the generation of a $0.1c/\omega_p = 16.8$ μm long, and $0.2c/\omega_p = 33.6$ μm wide, 13 pC electron bunch for $n_0 = 10^{15}$ cm^{-3} . As in the LWFA, the deformed structure of the wave only traps plasma electrons located in a narrow angular region [Figs. 2(c) and 2(d)], resulting in synchronized betatron trajectories of the B -injected electrons. We note that the external field also deflects the driver by an angle $\delta \simeq B_y^{\text{ext}} L / \gamma_b$, where L is the total B field length, and γ_b is the electron beam relativistic factor. In our scenario, as $\delta \simeq 6 \times 10^{-4}$, the driving beam deflection is negligible, but can still be corrected by placing additional identical external B fields pointing in the opposite direction. In fact, separating the additional fields by the betatron wavelength can further enhance synchronized injection.

Resorting to 2D simulations, the role of the B field amplitude, and down-ramp length was examined for the LWFA case (Fig. 3), starting with the parameters associated with Fig. 1, but using $\omega_0/\omega_p = 50$. Figure 3 supports our predictions, showing that the self-injected charge decreases with L^{ramp} [Fig. 3(a)], and increases with B_{y0}^{ext} [Fig. 3(b)]. The simulations also showed that the self-injected beam radius, energy spread, and beam emittance generally lowers with the applied B field amplitudes and for shorter ramps. Moreover, the beam duration increases for larger B fields, and for larger field down-ramps. The injection shutdown occurs for L^{ramp} larger than a few hundred electron skin depths, corresponding to the cm-mm scale for plasmas with $n_0 = 10^{16}$ – 10^{17} cm^{-3} . Finally, these simulations indicate that the threshold B field for injection in the down-ramps is similar to that associated with the uniform B field region, corresponding to $B_y^{\text{ext}} = 1$ – 100 T with $n_0 = 10^{15}$ – 10^{19} cm^{-3} .

In conclusion, we explored a novel controlled injection mechanism valid for both LWFA and PWFA. This scheme has the potential to generate high-quality beams, since it allows for the tailoring of the injection time period and azimuthal range. It is possible to generate 0.1–1 nC-class electron bunches depending on the plasma and beam

density parameters. The plasma, and B field dependence for the self-injected charge, and self-injection were estimated analytically and are consistent with the results from PIC simulations in OSIRIS.

Work partially supported by FCT (Portugal) through Grants No. SFRH/BD/22059/2005, No. PTDC/FIS/111720/2009, and No. CERN/FP/116388/2010, EC FP7 through LaserLab-Europe/Laptech; UC Lab Fees Research No. 09-LR-05-118764-DOUW, the U.S. DOE under DE-FC02-07ER41500 and No. DE-FG02-92ER40727, and the NSF under No. NSF PHY-0904039 and No. PHY-0936266. Simulations were done on the IST Cluster at IST, on the Jugene supercomputer under support from ECFP7 and DEISA, and on Jaguar computer under support from INCITE.

- [1] T. Tajima and J.M. Dawson, *Phys. Rev. Lett.* **43**, 267 (1979).
- [2] W. Lu *et al.*, *Phys. Rev. ST Accel. Beams* **10**, 061301 (2007).
- [3] S.F. Martins *et al.*, *Nature Phys.* **6**, 311 (2010).
- [4] N. Patel, *Nature (London)* **449**, 133 (2007).
- [5] W.P. Leemans *et al.*, *Nature Phys.* **2**, 696 (2006); S. Kneip *et al.*, *Phys. Rev. Lett.* **103**, 035002 (2009); D.H. Froula *et al.*, *Phys. Rev. Lett.* **103**, 215006 (2009).
- [6] A. Pukhov and J. Meyer ter Vehn, *Appl. Phys. B* **74**, 355 (2002).
- [7] W. Lu *et al.*, *Phys. Rev. Lett.* **96**, 165002 (2006).
- [8] I. Blumenfeld *et al.*, *Nature (London)* **445**, 741 (2007).
- [9] J. Faure *et al.*, *Nature (London)* **444**, 737 (2006); X. Davoine *et al.*, *Phys. Rev. Lett.* **102**, 065001 (2009); H. Kotaki *et al.*, *Phys. Rev. Lett.* **103**, 194803 (2009).
- [10] C.G.R. Geddes *et al.*, *Phys. Rev. Lett.* **100**, 215004 (2008).
- [11] A. Pak *et al.*, *Phys. Rev. Lett.* **104**, 025003 (2010); E. Oz *et al.*, *Phys. Rev. Lett.* **98**, 084801 (2007).
- [12] S. Kalmykov *et al.*, *Phys. Rev. Lett.* **103**, 135004 (2009).
- [13] D.H. Whittum, A.M. Sessler, and J.M. Dawson, *Phys. Rev. Lett.* **64**, 2511 (1990).
- [14] R.A. Fonseca *et al.*, *Lect. Notes Comput. Sci.* **2331**, 342 (2002).
- [15] T. Katsouleas and J.M. Dawson, *Phys. Rev. Lett.* **51**, 392 (1983).
- [16] L. Gorbunov, P. Mora, and T.M. Antonsen, Jr., *Phys. Rev. Lett.* **76**, 2495 (1996); C. Ren and W.B. Mori, *Phys. Plasmas* **11**, 1978 (2004).
- [17] T. Hosokai *et al.*, *Phys. Rev. Lett.* **97**, 075004 (2006); T. Hosokai *et al.*, *Appl. Phys. Lett.* **96**, 121501 (2010).
- [18] W. Lu, Ph.D. thesis, University of California, 2006.
- [19] E. Esarey and P. Sprangle, *IEEE Trans. Plasma Sci.* **24**, 252 (1996), and references therein; P. Sprangle, E. Esarey, and A. Ting, *Phys. Rev. Lett.* **64**, 2011 (1990); I. Kostyukov *et al.*, *Phys. Rev. Lett.* **103**, 175003 (2009).
- [20] F.S. Tsung *et al.*, *Phys. Rev. Lett.* **93**, 185002 (2004).
- [21] M. Kumada *et al.*, in *IEEE Proceedings of the 2003 Particle Accelerator Conference, 1993–1995* (IEEE, New York, 2003), Vols. 1–5; B.B. Pollock *et al.*, *Rev. Sci. Instrum.* **77**, 114703 (2006).
- [22] T. Katsouleas, *Phys. Rev. A* **33**, 2056 (1986).
- [23] J. Vieira *et al.*, *New J. Phys.* **12**, 045025 (2010).