

# Magnetic resonance spectroscopy and its applications in psychiatry

Gin S. Malhi, Michael Valenzuela, Wei Wen, Perminder Sachdev

---

**Objective:** This paper briefly describes neuroimaging using magnetic resonance spectroscopy (MRS) and provides a systematic review of its application to psychiatric disorders.

**Method:** A literature review (*Index Medicus/Medline*) was carried out, as well as a review of other relevant papers and data known to the authors.

**Results:** Magnetic resonance spectroscopy is a complex and sophisticated neuroimaging technique that allows reliable and reproducible quantification of brain neurochemistry provided its limitations are respected. In some branches of medicine it is already used clinically, for instance, to diagnose tumours and in psychiatry its applications are gradually extending beyond research. Neurochemical changes have been found in a variety of brain regions in dementia, schizophrenia and affective disorders and promising discoveries have also been made in anxiety disorders.

**Conclusions:** Magnetic resonance spectroscopy is a non-invasive investigative technique that has provided useful insights into the biochemical basis of many neuropsychiatric disorders. It allows direct measurement, *in vivo*, of medication levels within the brain and has made it possible to track the neurochemical changes that occur as a consequence of disease and ageing or in response to treatment. It is an extremely useful advance in neuroimaging technology and one that will undoubtedly have many clinical uses in the near future.

**Key words:** MRS, neurochemistry, neuroimaging, psychiatry, spectroscopy.

**Australian and New Zealand Journal of Psychiatry 2002; 36:31–43**

Over the past two decades, many sophisticated techniques for imaging the brain have been developed and introduced into clinical practice [1,2]. Magnetic resonance spectroscopy is one such technique that is becoming increasingly available in most MRI units and its application to psychiatry is receiving much attention. In this paper, we describe magnetic resonance spectroscopy (MRS) and its applications in psychiatry.

Magnetic resonance spectroscopy is a non-invasive computerized imaging technique that relies on the same

nuclear magnetic resonance (NMR) principles that form the basis of magnetic resonance imaging (MRI) and functional MRI (fMRI). It is used in both clinical and research settings to study brain chemistry, as it enables the relative quantification of certain compounds and their constituents in specific brain regions. This metabolic information can be used to define the nature and extent of brain diseases, such as cancer, stroke and various neurodegenerative disorders, aiding diagnosis and management [3–5]. In psychiatry, MRS is increasingly being used to research the neurochemical changes that occur in psychiatric disorders such as schizophrenia, dementia and affective disorders [6,7].

## Basic principles of magnetic resonance spectroscopy

Nuclear magnetic resonance exploits the fact that atomic nuclei 'spin' and that spinning charged nuclei

---

Gin S. Malhi, Lecturer, University of New South Wales (Correspondence)

Mood Disorders Unit, The Villa, Prince of Wales Hospital, Randwick NSW 2031, Sydney, Australia. Email: g.malhi@unsw.edu.au

Michael Valenzuela, Wei Wen, Perminder Sachdev

School of Psychiatry, University of New South Wales and Neuropsychiatric Institute, Prince of Wales Hospital, Sydney

Received 10 May 2001; revised 18 September 2001; accepted 25 September 2001.

produce a small magnetic field. When placed in a strong external magnetic field, certain atomic nuclei align themselves with the applied field either in the same (lower energy state) or opposite (higher energy state) direction. The application of a radio frequency pulse briefly promotes some of the lower energy nuclei to higher energy (less stable) states and synchronizes their spins so that all are in phase. When the pulse is switched off, the nuclei immediately begin to dephase, reverting to their former states, and in doing so emit radio frequency energy, which forms the basis of the electromagnetic signal detected by the scanner. The energy released decays with two relaxation times,  $T_1$  and  $T_2$ .  $T_1$  (spin-lattice or longitudinal relaxation time) is the time atomic nuclei take to return to their baseline lower energy states.  $T_2$  (spin-spin or transverse relaxation time) is the time it takes for the nuclei to substantially dephase. These relaxation times are determined by the immediate molecular environment of the atomic nuclei and are encoded within the electromagnetic (EM) signals produced by magnetic resonance scanning. Analysis of these EM signals yields structural, chemical or functional information about the tissues to which the atomic nuclei belong.

Structural MRI is now widely applied in clinical neuropsychiatry, and offers images superior to X-ray computed tomography (CT) because of greater resolution, lack of bony artefacts, greater differentiation of grey and white matter and increased sensitivity to white matter pathology. It relies largely on the proton signals from water molecules and provides cross-sectional, anatomical images with regional differences emerging as a result of association between water and lipid.

Magnetic resonance spectroscopy is rooted in similar NMR principles and permits *in vivo* neurochemical evaluation of the brain. However, instead of images it provides frequency-signal intensity spectra that reflect the biochemical (metabolite/compound) composition of a localized brain region (see Fig. 1). Magnetic resonance spectroscopy is able to measure a variety of nuclei/isotopes (see below), of which hydrogen is the most widely used, as it occurs in high concentrations in biological tissues. Compounds, containing hydrogen can be distinguished because not all protons, even within a uniform magnetic field, experience the exact same field. This is because each proton differs to the extent it is shielded by surrounding molecules such that protons within different compounds resonate at slightly different frequencies. These small differences in frequency are referred to as 'chemical shift' and are conventionally plotted along the horizontal axis, right to left, of a MR spectrum, in units of parts-per-million. The range of frequencies for hydrogen is relatively small and so brain tissue spectra consist of many overlapping signals from

the many constituent compounds. Even so, its unique position or chemical shift along the frequency axis of a MR spectrum can accurately identify each metabolite and its tissue concentration can be readily determined, as it is proportional to the area under the peak or the peak intensity [8]. In this manner MRS provides a unique means of non-invasive 'chemical biopsy' of the brain.

Magnetic resonance spectroscopy is a versatile technique that permits selection of the region of interest (ROI), the means of data acquisition, its postprocessing and quantification. The general aim in an MRS procedure is to optimize the signal from the ROI both in terms of quantity and quality in relation to background 'noise'. This is often referred to as the signal to noise ratio (SNR) and is influenced by many factors. The ROI is defined by graphic prescription on an initial localiser image. Voxel (a three dimensional volume) size and location is then determined by placement of an adjustable box cursor (see Fig. 2) and by slice selection. An ideal MRS voxel should only contain tissues of interest and therefore its dimensions are usually compact. However, the MR signal is directly related to voxel size necessitating a judicious balance between signal to noise-ratio (via sufficient tissue sampling) and localization specificity.

Data acquisition, in single-voxel MRS, most often utilizes either STEAM (Stimulated Echo Acquisition Method) or PRESS (Point Resolved Spectroscopy) excitation pulse sequences. Technically the two differ in that,

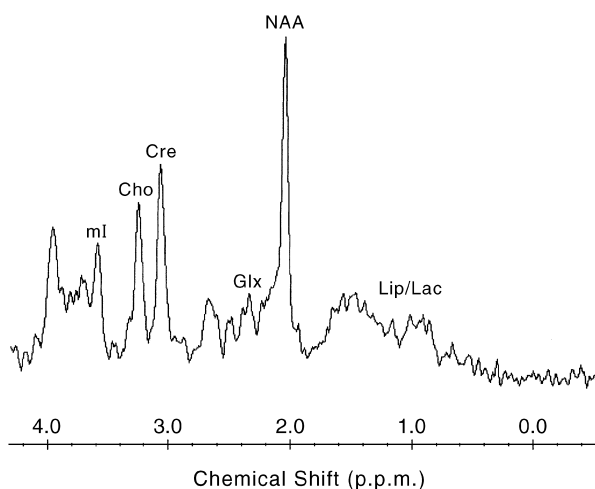
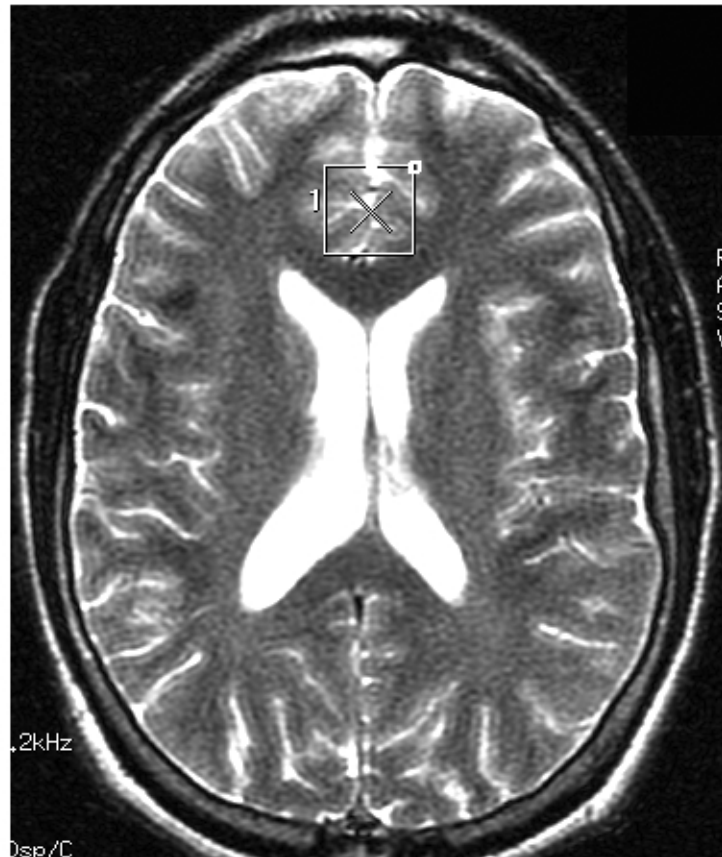


Figure 1. A short echo ( $TR/TE = 1500/30$  ms) STEAM (Stimulated Echo Acquisition Method) spectrum obtained from  $8\text{ cm}^3$  of healthy brain (principally anterior cingulate cortex). Abbreviations: Cho, choline; Cre, creatine; NAA, N-acetyl-aspartate; Lip, lipids; Lac, lactate; Glx, glutamate and glutamine; ml, myo-inositol.



*Figure 2. An axial  $T_2$ -weighted MR image illustrating midline placement of an adjustable box-cursor targeting anterior cingulate cortex.*

from the volume defined by the intersection of three slices, PRESS uses a 90-degree radiofrequency pulse (RF) and two 180-degree pulses to generate a spin echo, and STEAM uses three 90-degree RF pulses (stimulated echoes have only half the signal of spin echoes). In practice the two have different metabolite sensitivities, such that the STEAM sequence is better for metabolites with short  $T_2$  relaxation times, and PRESS is better for those with long  $T_2$  relaxation times. Suitable voxel selection and excitation sequence administration usually ensures a reasonable 'raw signal'. However, the concentration of water in the brain far exceeds that of any metabolites of interest and therefore its peak dominates and distorts the MR spectrum unless it is appropriately suppressed. This is achieved using RF pulses designed to excite frequencies corresponding to the water peak. The signal can also be 'lost' if there is substantial fat contamination within the voxel or distorted if there are abrupt tissue changes. These aberrations and others can sometimes be corrected during processing, a necessary step that converts the EM signals into spectra, before finally resolving the various spectral peaks, assigning them to the metabolites they represent and quantifying them. Quantification is dependent upon a number of variables (peak area,  $T_1$  and  $T_2$

relaxation times of each metabolite) and each of these complex steps adds to the overall complexity of single-voxel MRS [9–11]. Nowadays, quantification is usually achieved automatically using 'MRS software' and recent advances allow more than one voxel to be sampled at a time, within a chosen plane, and this can be extended to multiple slices. This novel technique called spectroscopic imaging (MRSI) or chemical shift imaging (CSI) allows the sampling of much larger volumes and has the advantage of allowing retrospective voxel selection and alignment in keeping with a variety of regions of interest. However, it necessitates pristine magnetic field homogeneity – which is rarely achieved and is prone to severe distortion by extra-cerebral tissue signals. Nevertheless, the appeal of MRS and CSI is that most MRI machines can be adapted, with some relatively minor changes, to perform the above functions and so it is potentially widely available.

### **Nuclei relevant to magnetic resonance spectroscopy**

A growing number of isotopes can be measured using MRS – proton [ $^1\text{H}$ ], carbon [ $^{13}\text{C}$ ], phosphorus [ $^{31}\text{P}$ ],

lithium [ $^7\text{Li}$ ], fluorine [ $^{19}\text{F}$ ] and sodium [ $^{23}\text{Na}$ ], with each having its own particular applications that exploit that isotope's specific properties. The concentrations of the isotopes vary considerably, from protons, which are ubiquitous, to those that are absent or negligible (e.g. lithium). However, in some instances the absence of a signal is an advantage as there is minimal background 'noise'. Such isotopes are therefore useful when investigating brain metabolism or pharmacokinetics. In glutamatergic neurotransmission research,  $^{13}\text{C}$ -labelled carbon has been used to track the synthesis of  $\gamma$ -aminobutyric acid (GABA) and the metabolism of glutamate [12,13]. Lithium- $^7\text{Li}$  spectroscopy measures the dominant atomic form of lithium, and has made *in vivo* investigation of its pharmacokinetic and pharmacodynamic properties possible. Similarly, fluorine- $^{19}\text{F}$  spectroscopy has been used to determine the concentration of fluorine containing medications in the brain, such as fluoxetine and fluvoxamine. Most studies use either proton- $^1\text{H}$ , or phosphorus- $^{31}\text{P}$  spectroscopy, because these nuclei permit the analysis of a variety of metabolites and are abundant in brain tissue. Proton- $^1\text{H}$  and phosphorus- $^{31}\text{P}$  spectroscopy and the metabolites they measure will therefore be discussed in some detail, especially those that have relevance to psychiatry.

## Compounds of interest

### Proton spectroscopy ( $^1\text{H}$ -NMR)

Hydrogen is a component of many compounds and would be expected to generate many overlapping spectral peaks especially as its chemical shift range is relatively small. However, only a handful of metabolites are readily observable on typical proton spectra. The reason for this is twofold. Firstly, only metabolites that are sufficiently small and mobile are able to generate clinically detectable MR spectra. Secondly, compounds need to be present in sufficiently high concentration (1–2 mM and higher) to be detected within a suitable imaging time. Hence, the following compounds can be measured: N-acetyl aspartate, choline, combined creatine and phosphocreatine, glutamate, myoinositol, and lactate. Those of interest to psychiatry are shown in Table 1.

### Practical considerations

The use of proton spectroscopy in assessing *in vivo* neurochemistry is limited by some practical difficulties. The technique, although able to detect the concentrations of metabolites, is unable to specifically identify their source, i.e. whether they are intra/extra-neuronal or synaptic. Distinguishing between these various sites is

further complicated by the existence of many compounds in several sites with multiple stores. Another difficulty is the volume of tissue that needs to be sampled in order to achieve a reasonable signal. In single-voxel measurements, several  $\text{cm}^3$  are necessary, limiting spatial resolution significantly and increasing the partial volume of unwanted tissue. A large voxel is also less likely to have field homogeneity, which is essential when attempting to achieve resolution of overlapping peaks, such as those of glutamate and glutamine [23]. In this respect MRSI techniques are better as they tend to have greater spatial resolution (as little as  $1\text{ cm}^3$ ). Another consideration that needs to be mentioned is the localization and reproducibility of MR sequences [24], usually achieved by monitoring and repeating the sequences using 'phantoms' containing known solutions and measuring the effective size of localized voxels [25]. There are also the problems of relative quantification. Metabolite concentration levels are often expressed as a ratio, but changes in the metabolite level of a widely used denominator (PCr + Cr) have been observed [26,27] and ideally absolute metabolite concentration levels should be obtained [28]. However, here too there are problems as it is unclear which of the many methods currently available is the most accurate and reliable.

### Phosphorus-31 spectroscopy ( $^{31}\text{P}$ -NMR)

Phosphorus- $^{31}\text{P}$  spectroscopy has been used for clinical research in psychiatry since its development. It quantifies the resonances of phosphomonoesters (PMEs), phosphodiesteres (PDEs), inorganic orthophosphate (Pi), phosphocreatine (PCr) and the nucleoside adenosine triphosphate (ATP), producing a total of seven peaks in a typical spectrum, with three peaks corresponding to ATP. It therefore provides a means of directly assessing membrane phospholipids and high-energy metabolism [29] (see Table 2).

### Applications in psychiatry

Traditionally, the relationship between specific psychiatric disorders and associated brain changes has been thought to be monocausal because of historical observations stemming from a variety of investigations that demonstrated brain region specific neuronal abnormalities in psychiatric disorders. Neuroimaging, along with other investigative techniques, has changed this view to one of neuronal networks by implicating or revealing the involvement of more than one brain region in many psychiatric disorders and showing that these regions interact with each other in a complex and sophisticated manner [36]. Neuropsychiatric disorders are therefore thought to

alter the brain's activities at multiple morphological levels – from the macroscopic (cortical, subcortical and regional) to the microscopic (neuronal, transmitter and receptor). Structural (CT, MRI) and functional (positron emission tomography, fMRI) neuroimaging have contributed significantly to the understanding of the

pathophysiology of neuropsychiatric disorders. However, interpretations have been limited because until recently the *in vivo* neurochemistry of the brain was inaccessible for study. Magnetic resonance spectroscopy techniques have changed this and promise to add a new dimension to our understanding of neuropsychiatric disease. The

Table 1. Proton-<sup>1</sup>H-spectroscopy metabolites

Metabolite	Chemical Shift p.p.m.	Concentration mmol/kg	Biochemical role
NAA	2.0	7–10	NAA, is a relatively inactive amino acid, that is involved in neuronal development and myelination. It is localized predominantly to neurones and its levels are therefore a marker of neuronal density and viability. It is absent when neurones die and persists in the brain for 24 h postmortem. Its concentration levels increase with maturation [14–17].
Cho	3.22	1.5	Most of the Cho peak arises from cell membrane constituents and phospholipid metabolites some of which function as second-messenger transmitters and neurotransmitters (e.g. phosphorylcholine, glycerophosphocholine and phosphatidylcholine). The Cho peak is a marker of cellular density and proliferation and is therefore increased in tumours. Free choline is present in micromolar concentrations and it does not contribute significantly to the Cho peak. Only a small proportion of the Cho peak arises from acetylcholine [18].
MI	3.6	5–7	Myo-Inositol is involved in phosphoinositol cycling and it maintains cell osmolality. It is a glial cell marker and possibly an indicator of neurotoxicity.
Glucose	3.43 + 3.8	1–3	Spectral peaks are indicative of tissue glucose, which is a metabolic substrate.
Cre	3.02 + 3.9	6*–8**	The grey matter concentration of creatine is greater than in white matter and the creatine peak reflects the presence of both creatine (Cr) and phosphocreatine (PCr). The creatine peak reflects total cellular creatine stores (sum of protons from both sides of the creatine kinase reaction) and produces two peaks (3.9ppm peak is usually lost by water suppression). Creatine is a neuronal constituent that plays a central role in maintaining energy stores. Its levels are relatively constant with respect to time and it is therefore used, as an internal standard for comparison.
Glx	2.1–2.5	6–10	Glutamate (Glu) is an excitatory neurotransmitter (NT) that is found in abundance in the cerebral cortex. Following synaptic release it is converted to glutamine (Gln) by adjacent glia [19], which then forms the substrate of mitochondrial Glu synthesis. Glu-Gln cycling is closely coupled to glial glucose utilization and lactate production [20,21] and Gln is possibly a more sensitive indicator of glutamatergic neurotransmission than Glu itself [22]. The spectral peaks of Gln & Glu overlap considerably and are often indistinguishable; they are therefore denoted collectively as the Glx peak.
NAAG	2.05	2	NAAG is a dipeptide metabolic intermediate of glutamate. It is thought to be present only in white matter.
Lip	1.3	< 0.5	Lipids are not usually observed in brain spectroscopy because they are tightly bound. Elevated levels reflect cellular breakdown and necrosis of white matter myelin that occurs in and close to tumours.
Lac	1.33	0.5	Lactate is the product of anaerobic glycolysis and is not normally detected in healthy brain tissue spectra. Elevated levels indicate ischaemia or hypoxia and high levels are also found in close proximity to tumours/lesions. The spectral peak is actually a doublet (two peaks in close proximity).

Key: NAA, N-acetyl aspartate, Cho, Choline, ml, myo-inositol; Lac, Lactate; NAAG, N-acetyl-aspartate glutamate; Cre, Creatine; Glx, Glutamate + Glutamine; Lip, Lipids. \*refers to white matter concentration \*\*refers to grey matter concentration.

Table 2. Phosphorus-<sup>31</sup>P-spectroscopy metabolites

Compound/Metabolite	Biochemical Role
PMEs and PDEs	The PME resonance reflects the concentrations of membrane phospholipid precursors (phosphorylcholine, phosphoylethanolamine (PE) and glycerophosphate). The PDE resonance reflects the concentrations of the products of membrane phospholipid breakdown (glycerylphosphorylcholine, glycerylphosphoylethanolamine, glycerylphosphorylserine and glycerylphosphorylinositol). The relative concentrations of PME and PDE metabolites are closely coupled to the metabolic activity of membrane phospholipids. With increasing age, precursor levels fall and the concentration of breakdown products increases resulting in a gradual reduction in the ratio of PME/PDE levels, which plateaus as the brain matures [30–32]. However, this ratio is only an approximate measure of membrane phospholipid turnover because a significant proportion of the PDE peak <i>in vivo</i> arises from phospholipids within the membrane [33]. An increase in the PME peak is often observed in tumours [34].
ATP, PCr and Pi	The resonances of ATP, PCr and Pi provide information about high-energy phosphate metabolism. In the Krebs's cycle, ATP acts as a high-energy reservoir for carbohydrate, protein and lipid metabolism. Its levels within the brain are buffered by high-energy PCr, which is abundant within the brain and shuttles energy as necessary from subcellular sources to sites of utility [35]. When energy consumption increases or there is reduced production of PCr, the level of PCr falls and that of Pi increases. The Pi resonance peak reflects the equilibrium between PO <sub>4</sub> <sup>2-</sup> and PO <sub>4</sub> <sup>-</sup> ions and is therefore used to calculate intracellular pH. In <sup>31</sup> P-spectra, ATP has three peaks that correspond to its three high-energy phosphate bonds. Two of these (α,β) bind a magnesium ion and their chemical shift is therefore affected by the <i>in vivo</i> concentration of magnesium. Lithium also affects the chemical shifts of ATP as it competes with magnesium in binding to ATP.

PCr, Phosphocreatine; PME, phosphomonoester; PDE, phosphodiester; Pi, inorganic phosphate; ATP, adenosine triphosphate.

principal findings of studies are discussed below according to phenotype, noting observations of clinical interest and research salience.

### Schizophrenia

Cumulative evidence from several modes of study suggests that the pathophysiology of schizophrenia most likely involves corticostriatal and corticothalamic networks [37] with alterations occurring during brain development [38]. However, the neurochemistry of schizophrenia remains an enigma with almost every neurotransmitter being implicated at one time or another.

The neurodevelopmental hypothesis of schizophrenia is supported by the many MRS studies that have demonstrated diminished levels of NAA in frontal and temporal lobes of patients with schizophrenia, irrespective of treatment status [39–48]. The precise pathophysiological significance of this remains unclear, but since NAA is reduced after neuronal loss [14], it may be a reflection of temporal and frontal cortical volume loss because of metabolic changes or reduced numbers of synaptic neuropils [49,50]. Compromised prefrontal cortex neuronal integrity could lead to increased limbic dopaminergic activity resulting in psychosis [51]. Indeed prefrontal

cortical NAA has been shown to be associated with striatal dopamine concentration changes and as frontostriatal pathways are mediated by glutamate, NAA alterations may be the consequence of glutamatergic neurotransmission abnormalities [52,53]. Of particular interest the same group has recently shown that antipsychotic drugs selectively increase dorsolateral prefrontal cortex NAA in patients with schizophrenia, suggesting regionally specific therapeutic action [54], however, a separate study has demonstrated reduced NAA in a different region of the brain, the mediodorsal thalamus [55].

Neurotransmitter changes can also arise because of neuronal cell membrane dysfunction, as membranes are essential for signal transduction, receptor function and ion conduction [56]. Studies of membrane metabolism in patients with schizophrenia have found a decrease in the ratio of PME/PDE that is localized to fronto-temporal brain regions [57,58] suggestive of decreased synthesis and increased degradation of membrane phospholipids that is perhaps the result of increased phospholipase activity or diminished phosphodiesterase activity and precedes clinical manifestation of the illness [58–60]. This is consistent with the finding that young first-degree relatives of patients with schizophrenia also have similar

membrane changes [61] and is in keeping with the theory of developmental arrest in which the observed changes may be an exaggeration of the normal synaptic pruning that occurs in late childhood and early adolescence. However, PME and PDE do not consist solely of phospholipid precursors and breakdown products, and the observed changes in their concentrations in schizophrenia may have alternative explanations, such as alterations of neuronal membrane structure itself [62].

Other studies have reported changes in the concentrations of high-energy phosphate metabolites, choline-containing compounds and myoinositol, but the findings have been inconsistent because of variability of clinical methodology and MRS application [63,64]. Clearly further studies are necessary and because the glutamate signal is difficult to resolve studies may have to use high-field MRS to enhance spectral resolution.

### *Summary*

Magnetic resonance spectroscopy studies in schizophrenia have identified reduced levels of NAA in temporal, thalamic and prefrontal cortical regions of the brain and specific changes in neuronal membrane phosphate metabolism. Although none of the findings are diagnostic they are supportive of current aetiological models of the disorder and enhance understanding of its neurochemistry. Monitoring these changes over time with progression of the disease and in response to treatment may provide insights into its pathophysiology and perhaps lead to the development of novel treatments. Furthermore, just as the neuropsychological and neuroanatomic changes help characterize schizophrenia, MRS profiles may yield diagnostic categories of clinical or therapeutic relevance and provide a means of early detection and screening.

### **Affective Disorders**

In comparison to the study of schizophrenia, the application of spectroscopy to research in affective disorders has been relatively limited perhaps partly because of the greater heterogeneity of mood disorders. Both unipolar and bipolar patients have been investigated for 'neurochemical markers' and the changes brought about by pharmacotherapy. A relatively consistent finding in depressed adults with either major depression or bipolar disorder has been an increase in the concentration of choline in the basal ganglia [65–67] and anterior cingulate [68]; structures that have been widely implicated in the generation and modulation of emotion by lesion, neuropsychological and neuroimaging studies [69].

Basal ganglia choline concentration has been found to vary with depression severity and is possibly

state-dependent [70]. Indeed choline level changes are more pronounced in those who are responsive to selective-serotonin reuptake inhibitors (SSRIs), such as fluoxetine [71], and tend to normalize with suitable antidepressant treatment [72]. Choline concentration is also altered in the left orbitofrontal cortex of depressed adolescents [73] further supporting a pathophysiological role in depression for choline-containing compounds. However, these findings that associate regional changes of choline concentration with clinical status [74] are as yet tentative and along with studies examining the effects of pharmacotherapeutic agents await robust replication using fluorinated metabolite studies [70,75].

Similar increases in membrane phospholipid metabolites are also observed in both medicated and unmedicated bipolar depressed patients [76–78]. [<sup>31</sup>P]-MRS studies have demonstrated elevations of PME in the frontal lobes of symptomatic unipolar [79] and bipolar patients [80,81] along with changes in phosphocreatine [82,83]. These increases of choline and PME measurements may in fact denote changes in phosphocholine or be the consequence of treatment with lithium, which inhibits choline transport and increases intracellular choline-containing compounds [84]. Phosphate metabolite changes point to the involvement of second messenger systems in the pathophysiology of bipolar disorders and several studies that have used lithium [<sup>7</sup>Li] spectroscopy to determine the relationship between brain lithium concentrations and therapeutic response, have demonstrated that the two are closely coupled [85–87]. However, the precise therapeutic effects of lithium remain unknown [88].

Proton spectroscopy studies of patients with bipolar disorder have revealed diminished dorsolateral prefrontal NAA [89] and creatine [90] concentrations, imputing decreased neuronal density or neuronal dysfunction and state dependent changes in metabolism. However, increased levels of thalamic NAA and creatine have been found in familial bipolar patients [91] suggesting that differential processes may be occurring between neuroanatomically connected regions. More recent studies of patients with affective disorders have shown significant reductions in the concentrations of cortical GABA [92] and anterior cingulate glutamate [93] and treatment studies, examining the metabolite changes before and after the administration of antidepressants [71] or ECT [94], have attempted to correlate biochemical and clinical parameters.

### *Summary*

Increased levels of choline and PME are found in depressed patients with studies in bipolar disorder suggesting

that these are perhaps state-dependent and can be modified by treatment [95]. Regionally specific changes in NAA and GABA have also been identified, in those with affective disorders, involving structures that are strongly implicated in the generation of emotion such as the anterior cingulate and prefrontal cortex. Clearly, these findings are preliminary and need replication, however, they are significant as they reflect membrane turnover and cellular metabolism upon which many essential neuronal functions such as neurotransmission and second messenger cascades are dependent. Furthermore these findings are important as they demonstrate both cortical and sub-cortical changes in brain neurochemistry that may prove useful state and/or trait markers of these disorders and perhaps serve as predictors of treatment response.

## Dementia

Dementia has perhaps been the more extensively investigated neuropsychiatric illness with MRS. Proton spectroscopy in Alzheimer's disease (AD) has demonstrated distributed cortical NAA losses, verified using quantitative methods that control for regional atrophy. These replicated findings suggest cellular decrements in neuroviability, which may precede observable structural changes. Such changes are likely to have cognitive consequences since NAA levels correlate with cognitive ability in disease-free younger [96] and older [97] individuals.

Myo-inositol (mI) has been found significantly elevated, by about 20%, in grey matter samples of AD patients [98]. One study found that this change began in the posterior cingulate [99]. It perhaps reflects the interruption of mI conversion to inositol-triphosphate, which normally regulates the membrane lipid, phosphatidylinositol [100]. This can result in a wide range of functional consequences since inositol phosphates are important secondary messengers linking endoplasmic reticulum protein synthesis with cell membrane turnover [101]. Other hypotheses about mI elevation include gliosis, because astrocytes contain high concentrations of the metabolite [102], or as a cell toxin marker, since mI has detoxification properties in other parts of the body [103] and correlates significantly with postmortem neurofibrillary tangles [104]. Combining NAA and mI data has proven to be clinically useful for the prognosis of cognitive status at 1 year follow-up [105] and is beginning to show significant promise in automated diagnosis of AD [106,107].

Phosphorous MRS of AD has delivered less consistent findings, possibly because of the competing systems of quantification that have been employed [98]. However, results suggest PME elevation early in the disease

process, which later normalizes with dementia progression. The reverse occurs with PCr levels, which initially decline and then eventually normalize. The pathological basis of these changes is not understood, but they have been used for preclinical diagnosis in an individual who exhibited these early changes, in the absence of cognitive abnormalities and later developed AD [108]. More consistent evidence comes from *in vitro* studies that have demonstrated that PDE levels are highly correlated with A $\beta$  plaque numbers [109], suggesting that this imaging modality may be suitable for monitoring disease progression and treatment response.

Less well studied dementia syndromes using MRS include Parkinson's disease [110], Huntington's disease [111], Vascular dementia [112], Frontotemporal dementia [113] and the AIDS dementia complex (ADC) [114]. In general, studies have found a region-specific pattern of NAA loss, in keeping with pathological change disrupting cellular neurometabolism. ADC studies are of particular interest because [ $^1\text{H}$ ]-MRS has been used to show rectification of the NAA signal after clinical treatment with Zidovudine [115]. The potential for MRS to monitor treatment efficacy in dementia, at the biochemical level, is an exciting one that requires further investigation.

## Summary

Proton MRS in dementia is able to detect neural tissue that is 'at risk' identified by NAA depletion and mI elevation, with the latter possibly being more sensitive to intracellular toxic change. MRS neuroimaging may therefore aid initial diagnosis and improve prognosis and management by facilitating monitoring of disease progression and treatment [116]. Valuable information from phosphorous MRS includes cell membrane status and the level of A $\beta$  infiltration derived from the PDE signal. Combining this information with risk factors such as ApoE may ultimately provide significant insight into an individual's susceptibility for dementia.

## Anxiety disorders and post-traumatic stress disorder

The investigation of anxiety disorders using MRS is especially difficult, as the MRI environment is notoriously anxiogenic. However, several studies have been conducted investigating the neurochemical pathology associated with anxiety across a range of anxiety disorders.

An early study that examined the effect of lactate-induced panic demonstrated an association between increased insular cortical lactate concentration and induced panic [117]. The same group subsequently



showed that treatment with fluoxetine abated panic symptoms but did not normalize the brain metabolic response with respect to lactate [118]. A recently published study has shown that panic disorder is associated with reductions in the levels of occipital cortical GABA, which is in keeping with preclinical and clinical evidence that implicates GABA in the pathophysiology of Panic Disorder. Anxiogenesis has been associated with deficits in GABA neuronal function and enhancement of GABA has been found to be anxiolytic [119].

Preliminary spectroscopy studies of patients with obsessive-compulsive disorder (OCD) also show little [120] or no change [121] in lenticular concentrations of NAA, Choline or Creatine. However, recent studies, measuring caudate nucleus glutamate and glutamine, found increased concentrations of these metabolites commensurate with symptom severity, which normalized after paroxetine treatment in line with clinical improvement [122].

In post-traumatic stress disorder (PTSD) anterior cingulate dysfunction has been implicated [123]. Supporting this is the finding that, in childhood PTSD, the concentration of NAA in the anterior cingulate is significantly lowered and that neuronal metabolism is altered [123].

### Summary

Changes of metabolite concentrations, some of which seem to be reversible with treatment, support the view that anxiety disorders arise because of neurochemically mediated dysfunction. These alterations may serve as markers of disease or as indicators of treatment-response and clearly warrant further investigation.

### Alcoholism

Both proton and phosphorus spectroscopy have been used to examine chronic alcohol abuse. However, relatively few studies have been conducted, and the findings are somewhat disparate, limiting the inferences that can be made. Reported findings include reduced occipital GABA [124] and cerebellar choline [125], and cortical white matter changes (PDE and phosphocreatine) that result from phospholipid damage [126,127] because of decreased brain energy metabolism [128]. A significant reduction in frontal white matter NAA is found in alcoholics that may be the consequence of neuronal loss or dysfunction in the metabolism of NAA [129]. However, axonal damage or destruction can also occur secondary to glutamate-mediated excitotoxicity during alcohol withdrawal, which may lead to frontal-lobe specific NAA reductions.

### Summary

It is well established that chronic severe alcohol abuse leads to significant brain damage, however, early identification of this process when the tissue changes are subtle would be of greater clinical use. Spectroscopy may therefore provide useful insights in terms of understanding the mechanisms of alcoholic brain damage and may provide a means of early detection and/or monitoring. Indeed, the ability to directly measure brain alcohol, using MRS, is a recent development that is likely to lead to a better understanding of the pharmacokinetics of alcohol and its long-term effects on brain tissue [130].

### Conclusion

The brain's inaccessibility limits its *in vivo* neurochemical assessment. Magnetic resonance spectroscopy has successfully negotiated this difficulty and enabled direct chemical examination of the tissues of the brain, such that, it is now being used to address key questions in neuropsychiatric research. However, phenotypic heterogeneity and technical limitations mean that its clinical applications remain relatively few.

It is hoped that further advances in technology and computing will lead to more sensitive and reliable methods of metabolite quantification and localization, and perhaps increase the number of compounds, in particular neurotransmitters, that can be detected using spectroscopy. Indeed, already MRS is being used to probe the pathophysiology and psychopharmacology of many neuropsychiatric disorders and it is possible that, in the near future, such 'chemical sampling' will generate means of classifying psychiatric disease on neurochemical grounds. Furthermore, spectroscopy may permit the analysis of immediate and long-term pharmacotherapeutic interventions and eventually uncover means of diagnosing disorders at a preclinical stage.

However, to achieve these ambitious goals, in addition to further technological refinement, the technique needs to be applied to pristine patient populations that are diagnostically distinct and ideally medication-free. Clearly, MRS is a promising investigational tool that raises many exciting possibilities in the research of neuropsychiatric disorders and its full clinical potential is only beginning to be realized.

### Acknowledgements

We sincerely thank Zora Vuckovic, Anne-Maree Austen and other members of the Mood Disorders Unit for their assistance. Supported by a National Health and

Medical Research Council Program Grant (993208), a NSW Department of Health Infrastructure Grant and an Australian Rotary Health Research Fund Grant.

## References

- Gordon E. Brain imaging technologies: how, what, when and why? *Australian and New Zealand Journal of Psychiatry* 1999; 33:187–196.
- Malhi GS, Dewan M. Topics in contemporary psychiatric practice: Neuroimaging. *International Journal of Psychiatry in Clinical Practice*. 2001; 5:77–78.
- Rauch SL, Renshaw PF. Clinical neuroimaging in psychiatry. *Harvard Review of Psychiatry* 1995; 2:297–312.
- Chakos MH, Esposito S, Charles C, Lieberman JA. Clinical applications of neuroimaging in psychiatry. *Magnetic Resonance Imaging Clinics of North America* 1998; 6:155–164.
- Ross B, Michaelis I. Clinical applications of magnetic resonance spectroscopy. *Magnetic Resonance Quarterly* 1994; 10:191–247.
- Buckley PF, Friedman L. Magnetic resonance spectroscopy. *British Journal of Psychiatry* 2000; 176:203–205.
- Vance AL, Velakoulis D, Maruff P, Wood SJ, Desmond P, Pantelis C. Magnetic resonance spectroscopy and schizophrenia: what have we learnt? *Australian and New Zealand Journal of Psychiatry* 2000; 34:14–25.
- Pouwels P, Frahm J. Regional metabolite concentrations in human brain as determined by quantitative localized proton MRS. *Magnetic Resonance in Medicine* 1998; 39:53–60.
- Barantin L, Akoka S. An overview of absolute quantification methods for *in vivo* MRS. *Journal of Magnetic Resonance Analysis* 1997; 3:21–27.
- Bartha R, Drost DJ, Williamson PC. Factors affecting the quantification of short echo *in vivo* <sup>1</sup>H MR spectra: prior knowledge, peak elimination, and filtering. *NMR Biomedicine* 1999;12:205–216.
- Brooks WM, Friedman SD, Stidley CA. Reproducibility of <sup>1</sup>H-MRS *in vivo*. *Magnetic Resonance Medicine* 1999; 41:193–197.
- Sibson NR, Dhankhar A, Mason GF, Behar KL, Rothman DL, Shulman RG. *In vivo* C NMR measurements of cerebral glutamine synthesis as evidence for glutamate-glutamine cycling. *Proceedings of the National Academy of Science* 1997; 94:2699–2704.
- Shulman RG. Functional imaging studies: linking mind and basic neuroscience. *American Journal of Psychiatry* 2001; 158:11–20.
- Birken DL, Oldendorf WH. N-acetyl-L-aspartic acid: a literature review of a compound prominent in <sup>1</sup>H NMR spectroscopic studies of the brain. *Neuroscience Behavioural Review* 1989; 13:23–31.
- Cohen BNL, Renshaw PE, Stoll AL. Decreased brain choline uptake in older adults an *in vivo* proton magnetic resonance spectroscopy study. *Journal of the American Medical Association* 1995; 274:902–907.
- Tsai G, Coyle JT. N-acetylaspartate in neuropsychiatric disorders. *Progressive Neurobiology* 1995; 46:531–540.
- Cheng LL, Ma MJ, Becepa L, Ptak T, Tracey I, Lackner A. Quantitative neuropathology by high resolution magic angle spinning proton magnetic resonance spectroscopy. *Proceedings of the National Academy of Science USA* 1997; 94:6408–6413.
- Miller BL. A review of chemical issues in <sup>1</sup>H NMR spectroscopy: N-acetyl-L-aspartate, creatine and choline. *NMR Biomedicine* 1991; 4:47–52.
- Erecinska M, Silver IA. Metabolism and role of glutamate in mammalian brain. *Progress in Neurobiology* 1990; 35:245–296.
- Magistretti PJ, Pellerin L. Cellular mechanisms of brain energy metabolism and their relevance to functional brain imaging. *Philosophical Transactions of the Royal Society of London* 1999; 354:1155–1163.
- Rothman DL, Sibson NR, Hyder F, Shen J, Behar KL, Shulman RG. *In vivo* nuclear magnetic resonance spectroscopy studies of the relationship between the glutamate-glutamine neurotransmitter cycle and functional neuroenergetics. *Philosophical Transactions of the Royal Society of London* 1999; 354:1165–1177.
- Bartha R, Williamson PC, Drost DJ, Malla A, Carr TJ, Cortese L. Measurement of glutamate and glutamine in the medial prefrontal cortex of never-treated schizophrenic patients and healthy controls by proton magnetic spectroscopy. *Archives of General Psychiatry* 1997; 54:959–965.
- Shen J, Rycyna RE, Rothman DL. Improvements on an *in vivo* automatic shimming method [FASTERMAP]. *Magnetic Resonance Medicine* 1997; 38:834–839.
- Podo F, Henriksen O, Bovee W, Leach MO, Leibfritz D, de Certaines JD. Absolute metabolite quantification by *in vivo* NMR spectroscopy: introduction, objectives and activities of a concerted action in biomedical research. *Magnetic Resonance Imaging* 1998; 16:1085–1092.
- Leach MO, Collins DJ, Keevil S, Rowland I, Smith MA, Henriksen O. Quality assessment *in vivo* NMR spectroscopy: clinical test objects: design, construction, and solutions. *Magnetic Resonance Imaging* 1995; 13:131–137.
- Connelly A, Jackson GD, Duncan JS, King MD, Gadian DG. Magnetic resonance spectroscopy in temporal lobe epilepsy. *Neurology* 1994; 44:1411–1417.
- Gadian DG. *NMR and its applications to living systems*, 2nd edn. Oxford: Oxford University Press, 1995.
- Keevil SF, Barbiroli B, Brooks JC, Cady EB, Canese R, Carlier P. Absolute metabolite quantification by *in vivo* NMR spectroscopy: a multicentre trial of protocols for *in vivo* localized proton studies of human brain. *Magnetic Resonance Imaging* 1998; 16:1093–1106.
- Pettegrew JW, Kopp SJ, Minshew NJ *et al*. <sup>31</sup>P nuclear magnetic resonance studies of phosphoglyceride metabolism in developing and degenerating brain: preliminary observations. *Journal of Neuropathology and Experimental Neurology* 1987; 46:419–430.
- Bluml S, Seymour KJ, Ross BD. Developmental changes in cholin- and ethanolamine-containing compounds measured with proton-decoupled <sup>31</sup>P MRS in *in vivo* human brain. *Magnetic Resonance Medicine* 1999; 42:643–654.
- Hanaoka S, Takashima S, Morooka K. Study of the maturation of the child's brain using <sup>31</sup>P-MRS. *Pediatric Neurology* 1998; 18:305–310.
- Pettegrew JW, McClure RJ, Keshavan MS, Minshew NJ, Panchalingam K, Klunk WE. <sup>31</sup>P magnetic resonance spectroscopy studies of developing brain. In: Keshavan MS, Murray RM, eds. *Neurodevelopment and adult psychopathology*. Cambridge: Cambridge University Press, 1992: 71–92.
- Kilby PM, Bolas NM, Radda GK. <sup>31</sup>P-NMR study of brain phospholipid structures *in vivo*. *Biochemical Biophysics Acta* 1991; 108:257–264.
- Vion-Dury J, Meyerhoff DL, Cozzone PL. What might be the impact on neurobiology of the analysis of brain metabolism by *in vivo* magnetic resonance spectroscopy. *Journal of Neurology* 1994; 241:354–371.
- Wallimann T, Wyss M, Brdiczka D, Nicolay K, Eppenberger HM. Intracellular compartmentation, structure and function of creatine kinase isoenzymes in tissues with high and fluctuating energy demands: the 'phosphocreatine circuit' for cellular energy homeostasis. *Biochem Journal* 1992; 281:21–40.

36. Mallet L, Mazoyer B, Martinot JL. Functional connectivity in depressive, obsessive-compulsive and schizophrenic disorders: an explorative correlational analysis of regional cerebral metabolism. *Psychiatry Research* 1998; 82:83–93.
37. Andreasen NC. A unitary model of schizophrenia: Bleiler's 'fragmented phrene' as schizencephaly. *Archives of General Psychiatry* 1999; 56:781–787.
38. Weinberger DR. From neuropathology to neurodevelopment for the pathogenesis of schizophrenia. *Lancet* 1995; 346:552–557.
39. Bartha R, Al-Semaan YM, Williamson PC *et al*. A short echo proton magnetic resonance spectroscopy study of the left mesial-temporal lobe in first-onset schizophrenic patients. *Biological Psychiatry* 1999; 45:1403–1411.
40. Cecil KM, Lenkinski RE, Gur RE, Gur RC. Proton magnetic resonance spectroscopy in the frontal and temporal lobes of neuroleptic naïve patients with schizophrenia. *Neuropsychopharmacology* 1999; 20:131–140.
41. Lim KO, Adalstenson E, Spielman D, Sullivan EV, Rosenbloom MJ. Proton magnetic resonance spectroscopic imaging of cortical gray and white matter in schizophrenia. *Archives of General Psychiatry* 1998; 55:346–352.
42. Deicken RF, Zhou L, Schuff N, Weiner MW. Proton magnetic resonance spectroscopy of the anterior cingulate region in schizophrenia. *Schizophrenia Research* 1997; 27:65–71.
43. Deicken RF, Zhou L, Schuff N, Fen G, Weiner MW. Hippocampal neuronal dysfunction in schizophrenia as measured by proton magnetic resonance spectroscopy. *Biological Psychiatry* 1998; 43:483–488.
44. Bertolino A, Nawroz S, Mattay VS *et al*. Regionally specific pattern of neurochemical pathology in schizophrenia as assessed by multislice proton magnetic resonance spectroscopic imaging. *American Journal of Psychiatry* 1996; 153:1554–1563.
45. Fukazako H, Fukazako T, Takeuchi K *et al*. Phosphorus magnetic resonance spectroscopy in schizophrenia: correlation between membrane phospholipid metabolism in the temporal lobe and positive symptoms. *Progress in Neuro-Psychopharmacology and Biology Psychiatry* 1996; 20:629–640.
46. Renshaw PF, Yurgelun-Todd DA, Tohen M, Gruber S, Cohen BM. Temporal lobe proton magnetic resonance spectroscopy of patients with first episode psychosis. *American Journal of Psychiatry* 1995; 152:444–446.
47. Brooks WM, Hodde-Vargas J, Vargas LA, Yeo RA, Ford CC, Hendren RL. Frontal lobe of children with schizophrenia spectrum disorders: a proton magnetic resonance spectroscopic study. *Biological Psychiatry* 1998; 43:263–269.
48. Steel RM, Bastin ME, McConnell S *et al*. Diffusion tensor imaging (DTI) and proton magnetic resonance spectroscopy (<sup>1</sup>H MRS) in schizophrenic subjects and normal controls. *Psychiatry Research: Neuroimaging* 2001; 106:161–170.
49. Selemon LD, Goldman-Rakic PS. The reduced neuropil hypothesis: a circuit-based model of schizophrenia. *Biological Psychiatry* 1999; 45:17–25.
50. McCarley RW, Wible CG, Grumin M, Kirayasu Y, Levitt JJ, Fischler IA. MRI anatomy of schizophrenia. *Biological Psychiatry* 1999; 45:1099–1119.
51. Bertolino A, Esposito G, Callicott JH *et al*. Specific relationship between prefrontal neuronal N-acetylaspartate and activation of the working memory cortical network in schizophrenia. *American Journal of Psychiatry* 2000; 157:26–33.
52. Bertolino A, Callicott JH, Elman I *et al*. Regionally specific neuronal pathology in untreated patients with schizophrenia: a proton magnetic resonance spectroscopic imaging study. *Biological Psychiatry* 1998; 43:623–640.
53. Bertolino A, Knable MB, Saunders RC *et al*. The relationship between dorsolateral prefrontal N-acetyl aspartate measures and striatal dopamine activity in schizophrenia. *Biological Psychiatry* 1999; 45:660–667.
54. Bertolino A, Callicott JH, Mattay VS *et al*. The effect of treatment with antipsychotic drugs on brain N-acetylaspartate measures in patients with schizophrenia. *Biological Psychiatry* 2001; 49:39–46.
55. Ende G, Braus DF, Walter S, Henn FA. Lower concentration of thalamic N-acetylaspartate in patients with schizophrenia: a replication study. *American Journal of Psychiatry* 2001; 158:1314–1316.
56. Horrobin DF, Glen A, Vaddadi K. The membrane hypothesis of schizophrenia. *Schizophrenia Research* 1994; 13:195–207.
57. Stanley JA, Williamson PC, Drost DJ *et al*. Membrane phospholipid metabolism and schizophrenia: an *in vivo* P-MR spectroscopy study. *Schizophrenia Research* 1994; 13:209–215.
58. Stanley JA, Williamson PC, Drost DJ *et al*. An *in vivo* study of the prefrontal cortex of schizophrenic patients at different stages of illness via phosphorus magnetic resonance spectroscopy. *Archives of General Psychiatry* 1995; 52:399–406.
59. Keshavan MS, Kapur S, Pettegrew JW. Magnetic resonance spectroscopy in psychiatry. potential, pitfalls, and promise. *American Journal of Psychiatry* 1991; 148:976–985.
60. Keshavan MS, Anderson S, Pettegrew JW. Is schizophrenia due to excessive synaptic pruning in the frontal cortex? *Journal of Psychiatric Research* 1994; 28:239–265.
61. Klemm S, Rzanny R, Riehemann S *et al*. Cerebral phosphate metabolism in first-degree relatives of patients with schizophrenia. *American Journal of Psychiatry* 2001; 158:958–960.
62. Potwarka JJ, Drost DJ, Williamson PC *et al*. A <sup>1</sup>H-decoupled <sup>31</sup>P chemical shift imaging study of medicated schizophrenic patients and healthy controls. *Biological Psychiatry* 1999; 45:687–693.
63. Keshavan MS, Stanley JA, Pettegrew JW. Magnetic resonance spectroscopy in schizophrenia: methodological issues and findings – part II. *Biological Psychiatry* 2000; 48:369–380.
64. Stanley JA, Pettegrew JW, Keshavan MS. Magnetic resonance spectroscopy in schizophrenia: methodological issues and findings – part I. *Biological Psychiatry* 2000; 48:357–368.
65. Kato T, Inubushi T, Kato N. Magnetic resonance spectroscopy in affective disorders. *Journal of Neuropsychiatry* 1998; 10:133–147.
66. Hamakawa H, Kato T, Murashita J, Kato N. Quantitative proton magnetic spectroscopy of the basal ganglia in patients with affective disorders. *European Archives of Psychiatry and Clinical Neurosciences* 1998; 248:53–58.
67. Moore CM, Renshaw PF. Magnetic resonance spectroscopy studies of affective disorders. In: Kirshnan KRR, Doraiswamy PM, eds. *Brain Imaging in Clinical Psychiatry*. New York: Marcel Dekker, 1997; 185–214.
68. Soares JC, Boada F, Spence S *et al*. NAA and choline measures in the anterior cingulate of bipolar disorder patients. *Biological Psychiatry* 1999; 45:119S.
69. Malhi GS, Bartlett JR. Depression: a role for neurosurgery? *British Journal of Neurosurgery* 2000; 14:415–422.
70. Henry ME, Moore CM, Kaufman MJ *et al*. Brain kinetics of paroxetine and fluoxetine on the third day of placebo substitution: a fluorine MRS study. *American Journal of Psychiatry* 2000; 157:1506–1508.
71. Renshaw FF, Lafer B, Babb SM *et al*. Basal ganglia choline levels in depression and response to fluoxetine treatment: *in vivo* proton magnetic resonance spectroscopy study. *Biological Psychiatry* 1997; 41:837–843.
72. Sonawalla SB, Renshaw PF, Moore CM *et al*. Compounds containing cytosolic choline in the basal ganglia: a potential biological marker of true drug response to fluoxetine. *American Journal of Psychiatry* 1999; 156:1638–1640.

73. Steingard RJ, Yurgelun-Todd DA, Hennen J *et al.* Increased orbitofrontal cortex levels of choline in depressed adolescents as detected by *in vivo* proton magnetic resonance spectroscopy. *Biological Psychiatry* 2000; 48:1053–1061.
74. Stoll AL, Sachs GS, Cohen BM, Lafer B, Christensen JD, Renshaw PF. Choline in the treatment of rapid-cycling bipolar disorder: clinical and neurochemical findings in lithium-treated patients. *Biological Psychiatry* 1996; 40:382–388.
75. Bolo NR, Hode Y, Nedelec J-F, Laine E, Wagner G, Macher J-P. Brain pharmacokinetics and tissue distribution *in vivo* of fluvoxamine and fluoxetine by fluorine magnetic resonance spectroscopy. *Neuropsychopharmacology* 2000; 23:428–438.
76. Guze BH, Gitlin M. The neuropathologic basis of affective disorders: neuroanatomic insights. *Journal of Neuropsychiatry and Clinical Neuroscience* 1994; 6:114–121.
77. Deicken RF, Weiner MW, Fein G. Decreased temporal lobe phosphomonoesters in bipolar disorder. *Journal of Affective Disorders* 1995; 33:195–199.
78. Pettegrew JW, Keshavan MS, Minshew NF. P nuclear magnetic resonance spectroscopy: neurodevelopment and schizophrenia. *Schizophrenia Bulletin* 1993; 19:35–53.
79. Volz H-P, Rzanny R, Rossger G *et al.* <sup>31</sup>P phosphorus magnetic resonance spectroscopy of the dorsolateral prefrontal region in schizophrenics: a study including 50 patients and 36 controls. *Biological Psychiatry* 1998; 44:399–404.
80. Kato T, Murasita J, Kamiya A, Shioiri N, Kato N, Inubushi T. Decreased brain intracellular pH measured by 'P-MR' in bipolar disorder: a confirmation of drug free patients and correlation with white matter hyperintensity. *European Archives of Psychiatry and Clinical Neuroscience* 1998; 248:301–306.
81. Ketter TA, George MS, Kimbrell TA, Benson BE, Post RM. Functional brain imaging, limbic function, and affective disorders. *Neuroscientist* 1996; 2:55–65.
82. Moore CM, Breeze JL, Kukes TJ, Rose SL, Dager SR, Cohen BM. Effects of myo-inositol ingestion on human brain myo-inositol levels: a proton magnetic resonance spectroscopic imaging study. *Biological Psychiatry* 1999; 45:1197–1202.
83. Kato T, Shioiri T, Murashita J *et al.* Laterized abnormality of high energy phosphate metabolism in the frontal lobes of patients with bipolar disorder detected by phase-encoded <sup>31</sup>P-MRS. *Psychological Medicine* 1995; 25:557–566.
84. Stoll AL, Renshaw PF, Yurgelun-Todd DA, Cohen BM. Neuroimaging in bipolar disorder: what have we learned? *Biological Psychiatry* 2000; 48:505–517.
85. Sachs GS, Renshaw PF, Lafer B. Variability of brain lithium levels during maintenance treatment: a magnetic resonance spectroscopy study. *Biological Psychiatry* 1995; 38:422–428.
86. Kato T, Inubushi T, Takahashi S. Relationship of lithium concentrations in the brain measured by lithium-7 magnetic resonance spectroscopy to treatment response in mania. *Journal of Clinical Psychopharmacology* 1994; 14:330–335.
87. Kato T, Fujii K, Shioiri T, Inubushi T, Takahashi S. Lithium side effects in relation to brain lithium concentration measured by lithium-7 magnetic resonance spectroscopy. *Progress in Neuropsychopharmacology and Biological Psychiatry* 1996; 20:87–97.
88. Manji HK, Potter WA, Lenox RH. Signal transduction pathways: molecular targets for lithium's actions. *Archives of General Psychiatry* 1995; 52:531–543.
89. Winsberg ME, Sachs N, Tate DL, Adalstenson E, Spielman D, Ketter TA. Decreased dorsolateral prefrontal N-acetyl aspartate in bipolar disorder. *Biological Psychiatry* 2000; 47:475–481.
90. Hamakawa H, Kato T, Shioiri T, Inubushi T, Kato N. Quantitative proton magnetic resonance spectroscopy of the bilateral frontal lobes in patients with bipolar disorder. *Psychological Medicine* 1999; 29:639–644.
91. Deicken RF, Eliaz Y, Feiwel R, Schuff N. Increased thalamic N-acetylaspartate in male patients with familial bipolar I disorder. *Psychiatry Research: Neuroimaging* 2001; 106:35–45.
92. Sanacora G, Mason GF, Rothman DL *et al.* Reduced cortical gamma-aminobutyric acid levels in depressed patients determined by proton magnetic resonance spectroscopy. *Archives of General Psychiatry* 1999; 56:1043–1047.
93. Auer DP, Putz B, Kraft E, Lipinski B, Schill J, Holsboer F. Reduced glutamate in the anterior cingulate cortex in depression: an *in vivo* proton magnetic resonance spectroscopy study. *Biological Psychiatry* 2000; 47:305–313.
94. Ende G, Braus DF, Walter S *et al.* Effects of age, medication, and illness duration on the N-acetyl aspartate signal of the anterior cingulate region of schizophrenia. *Schizophrenia Research* 2000; 41:389–395.
95. Yildiz A, Sachs GS, Dorer DJ, Renshaw PF. <sup>31</sup>P nuclear magnetic resonance spectroscopy findings in bipolar illness: a meta-analysis. *Psychiatry Research: Neuroimaging* 2001; 106:181–191.
96. Jung R, Brooks W, Yeo R, Chiulli S, Weers D, Sibbitt W. Biochemical markers of intelligence: a proton MR spectroscopy study of normal human brain. *Proceedings of the Royal Society of London – Series B. Biological Sciences* 1999; 266:1375–1379.
97. Valenzuela M, Sachdev P, Wen W, Shnier R, Brodaty H, Gillies D. Dual voxel proton magnetic resonance spectroscopy in the healthy elderly: subcortico-frontal axonal N-acetylaspartate levels are correlated with fluid cognitive abilities independent of structural brain changes. *Neuroimage* 2000; 12:747–756.
98. Valenzuela M, Sachdev P. Magnetic resonance spectroscopy in AD. *Neurology* 2001; 56:592–598.
99. Kantarci K, Jack C, Xu Y *et al.* Regional metabolic patterns in mild cognitive impairment and Alzheimer's disease: a 1H MRS study. *Neurology* 2000; 55:210–217.
100. Young L, Kish S, Li P, Warsh J. Decreased brain [3H] inositol 1,4,5-triphosphate binding in Alzheimer's disease. *Neuroscience Letters* 1998; 94:198–202.
101. Manji H, McNamara R, Chen G, Lenox R. Signalling pathways in the brain: cellular transduction of mood stabilisation in the treatment of manic-depressive illness. *Australian and New Zealand Journal of Psychiatry* 1999; 33(Suppl.):S65–S83.
102. Bitsch A, Bruhn H, Vougioukas V *et al.* Inflammatory CNS demyelination: histopathologic correlation with *in vivo* quantitative proton MR spectroscopy. *American Journal of Neuroradiology* 1999; 20:1619–1627.
103. Ross B, Bluml S, Cowan R, Danielsen E, Farrow N, Gruetter R. *In vivo* magnetic resonance spectroscopy of human brain: the biophysical basis of dementia. *Biophysical Chemistry* 1997; 687:161–172.
104. Klunk W, Xu C, Panchalingam K, McClure J, Pettegrew J. Quantitative <sup>1</sup>H and <sup>31</sup>P MRS of PCA Extracts of Postmortem Alzheimer's Disease Brain. *Neurobiology of Aging* 1996; 17:349–357.
105. Doraiswamy M, Charles C, Krishnan R. Prediction of cognitive decline in early Alzheimer's disease. *Lancet* 1998; 352:1678–1678.
106. Shonk T, Moats R, Gifford P *et al.* Probable Alzheimer disease: diagnosis with proton MR spectroscopy. *Radiology* 1995; 195:65–72.
107. Parnetti L, Tarducci R, Presciutti O *et al.* Proton magnetic resonance spectroscopy can differentiate Alzheimer's disease from normal aging. *Mechanism of Ageing and Development* 1997; 97:9–14.
108. Pettegrew J, Klunk W, Kanal E, Panchalingam K, McClure J. Changes in brain membrane phospholipid and high-energy phosphate metabolism precede dementia. *Neurobiology of Aging* 1995; 16:973–975.

109. Pettegrew J, Panchalingam K, Moosy J, Martinez J, Rao G, Boller F. Correlation of phosphorous-31 magnetic resonance spectroscopy and morphologic findings in Alzheimer's disease. *Archives of Neurology* 1998; 45:1093–1096.
110. Abe K, Terakawa H, Takanashi M *et al.* Proton magnetic resonance spectroscopy of patients with parkinsonism. *Brain Research Bulletin* 2000; 52:589–595.
111. Hoang T, Bluml S, Dubowitz J *et al.* Quantitative proton-decoupled 31P MRS and 1H MRS in the evaluation of Huntington's and Parkinson's disease. *Neurology* 1998; 50:1033–1040.
112. Kattapong V, Brooks W, Wesley M, Rosenberg G. Magnetic resonance spectroscopy of vascular and Alzheimer's type dementia. *Archives of Neurology* 1996; 53:678–680.
113. Ernst T, Chang L, Melchor R, Mehringer M. Frontotemporal Dementia and Early Alzheimer Disease: Differentiation with Frontal Lobe H-1 MR Spectroscopy. *Radiology* 1997; 203:829–836.
114. Chang L, Ernst T, Leonido-Yee M *et al.* Highly active antiretroviral therapy reverses brain metabolite abnormalities in mild HIV dementia. *Neurology*, 1999; 53:782–789.
115. Vion-Dury J, Nicoli F, Salvan A, Confort-Gouny S, Dhiver C, Cozzone P. Reversal of brain metabolic alteration with Zidovudine detected by proton localised magnetic resonance spectroscopy. *Lancet* 1995; 345:60–61.
116. Antuono PG, Jones JL, Wang Y, Shi-Jiang Li. Decreased glutamate + glutamine in Alzheimer's disease detected *in vivo* with 1H-MRS at 0.5 T. *Neurology* 2001; 56:737–742.
117. Dager SR, Marro KI, Richards TL, Metzger GD. Preliminary application of magnetic resonance spectroscopy to investigate lactate-induced panic. *American Journal of Psychiatry* 1994; 151:57–63.
118. Dager SR, Richards T, Strauss W, Artru A. Single-voxel 1H-MRS investigation of brain metabolic changes during lactate-induced panic. *Psychiatry Research: Neuroimaging* 1997; 76:89–99.
119. Goddard AW, Mason GF, Almai A *et al.* Reductions in occipital cortex GABA levels in panic disorder detected with 1H-magnetic resonance spectroscopy. *Archives of General Psychiatry* 2001; 58:556–561.
120. Bartha R, Stein MB, Williamson PC *et al.* A short echo 1H spectroscopy and volume tric MRI study of the corpus striatum in patients with obsessive-compulsive disorder and comparison subjects. *American Journal of Psychiatry* 1998; 155:1584–1591.
121. Ohara K, Isoda H, Suzuki Y *et al.* Proton magnetic resonance spectroscopy of lenticular nuclei in obsessive-compulsive disorder. *Psychiatry Research: Neuroimaging* 1999; 92:2–3.
122. Rosenberg DR, MacMaster FP, Keshavan MS, Fitzgerald KD, Stewart CM, Moore GJ. Decrease in caudate glutamatergic concentrations in pediatric obsessive-compulsive disorder patients taking paroxetine. *Journal of the American Academy of Child and Adolescent Psychiatry* 2000; 39:1096–1103.
123. De Bellis MD, Keshaan MS, Spencer S, Hall J. N-acetylaspartate concentration in the anterior cingulate of maltreated children and adolescents with PTSD. *American Journal of Psychiatry* 2000; 157:1175–1177.
124. Behar KL, Rothman DL, Petersen KF *et al.* Preliminary evidence of low cortical GABA levels in localized 1H-MR spectra of alcohol-dependent and hepatic encephalopathy patients. *American Journal of Psychiatry* 1999; 156:952–954.
125. Martin PR, Gibbs SJ, Minnerrichter AA, Riddle WR, Welch LW, Willcott MR. Brain proton magnetic resonance spectroscopy studies in recently detoxified alcoholics. *Alcoholism: Clinical and Experimental Research* 1995; 19:685–692.
126. Estilaei MR, Matson GB, Payne GS, Leach MO, Fein G, Meyerhoff DJ. Effects of chronic alcohol consumption on the broad phospholipid signal in human brain: an *in vivo* 31P MRS study. *Alcoholism: Clinical and Experimental Research* 2001; 25:89–97.
127. Meyerhoff DJ, Rooney WD, Tokumitsu T, Weiner MW. Evidence of multiple ethanol pools in the brain: an *in vivo* proton magnetization transfer study. *Alcoholism: Clinical and Experimental Research* 1996; 20:1283–1288.
128. Braunova Z, Kasparova S, Mlynarik V *et al.* Metabolic changes in rat brain after prolonged ethanol consumption measured by 1H and 31P MRS experiments. *Cellular and Molecular Neurobiology* 2000; 20:703–715.
129. Schweinsburg BC, Taylor MJ, Alhassoon OM *et al.* Chemical pathology in brain white matter of recently detoxified alcoholics: a 1H-magnetic resonance spectroscopy investigation of alcohol-associated frontal lobe injury. *Alcoholism: Clinical and Experimental Research* 2001; 25:924–934.
130. Fein G, Meyerhoff DJ. Ethanol in human brain by magnetic resonance spectroscopy: correlation with blood and breath levels, relaxation, and magnetization transfer. *Alcoholism: Clinical and Experimental Research* 2000; 24:1227–1235.