



# Mapping the zoonotic niche of Ebola virus disease in Africa

## Citation

Pigott, D. M., N. Golding, A. Mylne, Z. Huang, A. J. Henry, D. J. Weiss, O. J. Brady, et al. 2014. "Mapping the zoonotic niche of Ebola virus disease in Africa." *eLife* 3 (1): e04395. doi:10.7554/eLife.04395. <http://dx.doi.org/10.7554/eLife.04395>.

## Published Version

doi:10.7554/eLife.04395

## Permanent link

<http://nrs.harvard.edu/urn-3:HUL.InstRepos:13347624>

## Terms of Use

This article was downloaded from Harvard University's DASH repository, and is made available under the terms and conditions applicable to Other Posted Material, as set forth at <http://nrs.harvard.edu/urn-3:HUL.InstRepos:dash.current.terms-of-use#LAA>

## Share Your Story

The Harvard community has made this article openly available. Please share how this access benefits you. [Submit a story](#).

[Accessibility](#)

# Mapping the zoonotic niche of Ebola virus disease in Africa

David M Pigott<sup>1†</sup>, Nick Golding<sup>1†</sup>, Adrian Mylne<sup>1</sup>, Zhi Huang<sup>1</sup>, Andrew J Henry<sup>1</sup>, Daniel J Weiss<sup>1</sup>, Oliver J Brady<sup>1</sup>, Moritz UG Kraemer<sup>1</sup>, David L Smith<sup>1,2</sup>, Catherine L Moyes<sup>1</sup>, Samir Bhatt<sup>1</sup>, Peter W Gething<sup>1</sup>, Peter W Horby<sup>3</sup>, Isaac I Bogoch<sup>4,5</sup>, John S Brownstein<sup>6,7</sup>, Sumiko R Mearu<sup>8</sup>, Andrew J Tatem<sup>9,10,13</sup>, Kamran Khan<sup>4,11</sup>, Simon I Hay<sup>1,12\*</sup>

<sup>1</sup>Spatial Ecology and Epidemiology Group, Department of Zoology, University of Oxford, Oxford, United Kingdom; <sup>2</sup>Sanaria Institute for Global Health and Tropical Medicine, Rockville, United States; <sup>3</sup>Epidemic Diseases Research Group, Centre for Tropical Medicine and Global Health, University of Oxford, Oxford, United Kingdom; <sup>4</sup>Department of Medicine, Division of Infectious Diseases, University of Toronto, Toronto, Canada; <sup>5</sup>Divisions of Internal Medicine and Infectious Diseases, University Health Network, Toronto, Toronto, Canada; <sup>6</sup>Department of Pediatrics, Harvard Medical School, Boston, United States; <sup>7</sup>Children's Hospital Informatics Program, Boston Children's Hospital, Boston, United States; <sup>8</sup>Children's Hospital Informatics Program, Boston Children's Hospital, Boston, United States; <sup>9</sup>Department of Geography and Environment, University of Southampton, Southampton, United Kingdom; <sup>10</sup>Fogarty International Center, National Institutes of Health, Bethesda, United States; <sup>11</sup>Li Ka Shing Knowledge Institute, St. Michael's Hospital, Toronto, Canada; <sup>12</sup>Fogarty International Center, National Institutes of Health, Bethesda, United States; <sup>13</sup>Flowminder Foundation, Stockholm, Sweden

\*For correspondence: simon.hay@zoo.ox.ac.uk

†These authors contributed equally to this work

Competing interests: See page 20


Funding: See page 21

Received: 18 August 2014

Accepted: 31 August 2014

Published: 08 September 2014

Reviewing editor: Prabhat Jha, University of Toronto, Canada

 Copyright Pigott et al. This article is distributed under the terms of the [Creative Commons Attribution License](#), which permits unrestricted use and redistribution provided that the original author and source are credited.

**Abstract** Ebola virus disease (EVD) is a complex zoonosis that is highly virulent in humans. The largest recorded outbreak of EVD is ongoing in West Africa, outside of its previously reported and predicted niche. We assembled location data on all recorded zoonotic transmission to humans and Ebola virus infection in bats and primates (1976–2014). Using species distribution models, these occurrence data were paired with environmental covariates to predict a zoonotic transmission niche covering 22 countries across Central and West Africa. Vegetation, elevation, temperature, evapotranspiration, and suspected reservoir bat distributions define this relationship. At-risk areas are inhabited by 22 million people; however, the rarity of human outbreaks emphasises the very low probability of transmission to humans. Increasing population sizes and international connectivity by air since the first detection of EVD in 1976 suggest that the dynamics of human-to-human secondary transmission in contemporary outbreaks will be very different to those of the past.

DOI: [10.7554/eLife.04395.001](https://doi.org/10.7554/eLife.04395.001)

## Introduction

Ebola viruses have for the last forty years been responsible for a number of outbreaks of Ebola virus disease (EVD) in humans (Pattyn et al., 1977), with high case fatality rates typically around 60–70%, but potentially reaching as high as 90% (Feldmann and Geisbert, 2011). The most recent outbreak began in Guinea in December 2013 (Baize et al., 2014; Bausch and Schwarz, 2014) and has subsequently spread to Liberia, Sierra Leone and Nigeria (ECDC, 2014). The unprecedented size and scale of this ongoing outbreak has the potential to destabilise already fragile economies and healthcare

**eLife digest** Since the first outbreaks of Ebola virus disease in 1976, there have been numerous other outbreaks in humans across Africa with fatality rates ranging from 50% to 90%. Humans can become infected with the Ebola virus after direct contact with blood or bodily fluids from an infected person or animal. The virus also infects and kills other primates—such as chimpanzees or gorillas—though Old World fruit bats are suspected to be the most likely carriers of the virus in the wild.

The largest recorded outbreak of Ebola virus disease is ongoing in West Africa: more people have been infected in this current outbreak than in all previous outbreaks combined. The current outbreak is also the first to occur in West Africa—which is outside the previously known range of the Ebola virus.

Pigott et al. have now updated predictions about where in Africa wild animals may harbour the virus and where the transmission of the virus from these animals to humans is possible. As such, the map identifies the regions that are most at risk of a future Ebola outbreak. The data behind these new maps include the locations of all recorded primary cases of Ebola in human populations—the ‘index’ cases—many of which have been linked to animal sources. The data also include the locations of recorded cases of Ebola virus infections in wild bats and primates from the last forty years. The maps, which were modelled using more flexible methods than previous predictions, also include new information—collected using satellites—about environmental factors and new predictions of the range of wild fruit bats.

Pigott et al. report that the transmission of Ebola virus from animals to humans is possible in 22 countries across Central and West Africa—and that 22 million people live in the areas at risk. However, outbreaks in human populations are rare and the likelihood of a human getting the disease from an infected animal still remains very low. The updated map does not include data about how infections spread from one person to another, so the next challenge is to use existing data on human-to-human transmission to better understand the likely size and extent of current and future outbreaks. As more people live in, and travel to and from, the at-risk regions than ever before, Pigott et al. note that new outbreaks of Ebola virus disease are likely to be very different to those of the past.

DOI: [10.7554/eLife.04395.002](https://doi.org/10.7554/eLife.04395.002)

systems (Fauci, 2014), and fears of international spread of a Category A Priority Pathogen (NIH, 2014) have made this a massive focus for international public health (Chan, 2014). This has led to the current outbreak being declared a Public Health Emergency of International Concern on the 8 August 2014 (Briand et al., 2014; Gostin et al., 2014; WHO, 2014d).

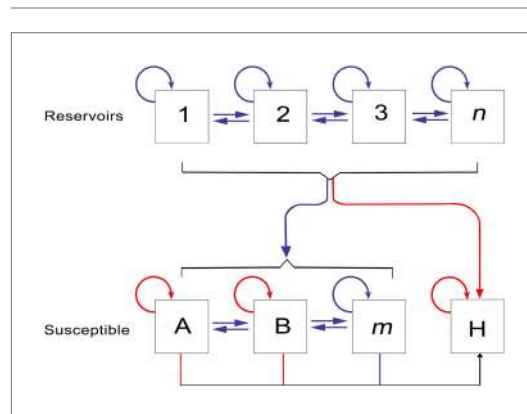
The *Filoviridae*, of which *Ebolavirus* is a constituent genus, belong to the order *Mononegavirales*. Two other genera complete the family: *Marburgvirus*, itself responsible for a number of outbreaks of haemorrhagic fever across Africa (Gear et al., 1975; Conrad et al., 1978; Smith et al., 1982; Towner et al., 2006) and *Cuevavirus*, recently isolated from bats in northern Spain (Negredo et al., 2011). Five species of *Ebolavirus* have been isolated to date (Kuhn et al., 2010; King et al., 2012); the earliest recognised outbreaks of EVD were reported in Zaire (now the Democratic Republic of the Congo [DRC]) and Sudan in 1976 (International Commission, 1978; WHO International Study Team, 1978). The causative viruses were isolated (Pattyn et al., 1977) and later identified to be distinct species, *Zaire ebolavirus* (EBOV) and *Sudan ebolavirus* (SUDV). A third species of *Ebolavirus*, *Reston ebolavirus*, was isolated from *Cynomolgus* monkeys imported from the Philippines to a facility in the United States, where they experienced severe haemorrhaging (Jahrling et al., 1990). Whilst serological evidence of infection with this species has been reported in individuals in the Philippines (Miranda et al., 1991), no pathogenicity has been reported beyond primates and porcids (Barrette et al., 2009; Feldmann and Geisbert, 2011). In 1994 a fourth species, *Tai Forest ebolavirus* was isolated from a veterinarian who had autopsied a chimpanzee in Côte d’Ivoire (Le Guenno et al., 1995), though the virus has not been detected subsequently. The final species, *Bundibugyo ebolavirus*, was responsible for an outbreak of EVD in Uganda in 2007 (Towner et al., 2008), as well as a more recent outbreak in the DRC (WHO, 2012b).

Initial analysis suggested that the viruses isolated from the current outbreak, originating in Guinea, formed a separate clade within the five *Ebolavirus* species (Baize et al., 2014). Subsequent re-analysis

of the same sequences however, indicated that these isolates instead nest within the *Zaire ebolavirus* lineage (*Dudas and Rambaut, 2014*), and diverged from Central Africa strains approximately ten years ago (*Gire et al., 2014*).

Which reservoir species are responsible for maintaining Ebola transmission between outbreaks is not well understood (*Peterson et al., 2004b*), but over the last decade significant progress has been made in narrowing down the list of likely hosts (*Peterson et al., 2007*) (*Figure 1*). Primates have long been known to harbour filoviral infections, with the first Marburg strains identified in African green monkeys in 1967 (*Siegert et al., 1967; Beer et al., 1999*). Significant mortality has also been reported in wild primate populations across Africa, most notably in gorilla (*Gorilla gorilla*) and chimpanzee (*Pan troglodytes*) populations (*Formenty et al., 1999; Rouquet et al., 2005; Bermejo et al., 2006*). The high case fatality rates recorded in the great apes combined with their declining populations and limited geographical range, indicate they are likely dead-end hosts for the virus and not reservoir species (*Groseth et al., 2007*). A large survey of small mammals in and around Gabon identified three species of bats which were infected with Ebola viruses—*Hypsignathus monstrosus*, *Epomops franqueti* and *Myonycteris torquata* (*Leroy et al., 2005*). Subsequent serological surveys (*Pourrut et al., 2009; Hayman et al., 2010*) and evidence linking the potential source of human outbreaks to bats (*Leroy et al., 2009*) lend support to the hypothesis of a bat reservoir. This, coupled with repeated detection of *Marburgvirus* in the fruit bat *Rousettus aegypticus* (*Towner et al., 2009*) and the only isolations of *Cuevavirus* also from bats (specifically *Llovia virus* [*Negredo et al., 2011*]), all support the suspicion that Chiroptera play an important role in the natural life-cycle of the filoviruses.

Humans represent a dead-end host for the virus, with only stuttering chains of transmission reported between humans in the majority of previous outbreaks (*Chowell et al., 2004; Legrand et al., 2007*) and no indication that humans can reintroduce the virus back into reservoir species (*Karesh et al., 2012*). The incubation period in humans ranges from two days to three weeks, after which a variety of clinical symptoms arise, affecting multiple organs of the body. At the peak of illness, haemorrhaging shock and widespread tissue damage can occur and can eventually lead to death within 6–16 days (*Feldmann and Geisbert, 2011*). Human-to-human transmission is mainly through direct unprotected contact with infected individuals and cadavers, with infectious particles detected in a



**Figure 1.** The epidemiology of Ebola virus transmission in Africa. Of the suspected reservoir species, 1, 2 and 3 represent the three bat species from which Ebola virus has been isolated (*Hypsignathus monstrosus*, *Myonycteris torquata* and *Epomops franqueti*) and *n* represents unknown reservoirs of the disease yet to be discovered. Of the susceptible species, A represents *Pan troglodytes*, B *Gorilla gorilla* and *m* represents other organisms susceptible to the disease, such as duikers. H represents humans. Blue arrows indicate unknown transmission cycles or infection routes and red arrow routes have been confirmed or are suspected. Adapted from *Groseth et al. (2007)*.

DOI: [10.7554/eLife.04395.003](https://doi.org/10.7554/eLife.04395.003)

number of different body fluids (*Feldmann and Geisbert, 2011*). The typical outbreak profile is defined by an index individual that has recently come into contact with the blood of another mammal through either hunting or the butchering of animal carcasses (*Pourrut et al., 2005*). Whilst it has been difficult to identify the zoonotic source for the index cases of some outbreaks, a recurring theme of hunting and handling bushmeat is suspected (*Table 1; Boumandouki et al., 2005; Nkoghe et al., 2005, 2011; Leroy et al., 2009*). For some outbreaks, including the most recent, the initial source of zoonotic transmission has not been identified. In subsequent human-to-human transmission, the highest risk activities are those that bring humans into close contact with infected individuals. These include medical settings where insufficient infection control precautions have been taken, as well as home care and funeral preparations carried out by families or close friends (*Baron et al., 1983; Georges et al., 1999; Boumandouki et al., 2005*). As the conditions required for transmission are culturally and contextually dependent, opportunities for sustained transmission are highly heterogeneously distributed. Typically, chains of infection do not exceed three or four sequential transmission events, although occasionally (and particularly in

**Table 1.** Locations of outbreaks of Ebola virus disease in humans

Outbreak	Countries	Date range	Location	Species	Reference
1	South Sudan	Jun–Nov 1976	Nzara	SUDV	(WHO International Study Team, 1978)
2	DRC	Sep–Oct 1976	Yambuku	EBOV	(International Commission, 1978)
3	DRC	Jun 1977	Bonduni	EBOV	(Heymann et al., 1980)
4	South Sudan	Jul–Oct 1979	Nzara	SUDV	(Baron et al., 1983)
5	Côte d'Ivoire	Nov 1994	Tai Forest	TAFV	(Le Guenno et al., 1995; Formenty et al., 1999)
6	Gabon	Nov 1994–Feb 1995	Mekouka and Andock mining camps	EBOV	(Amblard et al., 1997; Georges et al., 1999; Milleliri et al., 2004)
7	DRC	Jan–Jul 1995	Mwembe Forest	EBOV	(Muyembe and Kipasa, 1995; Khan et al., 1999)
8	Gabon	Jan–Mar 1996	Mayibout 2	EBOV	(Georges et al., 1999; Milleliri et al., 2004)
9	Gabon	Jul 1996–Jan 1997	Booue	EBOV	(Georges et al., 1999; Milleliri et al., 2004)
10	Uganda	Oct 2000–Feb 2001	Rwot-Obillo	SUDV	(WHO, 2001; Okware et al., 2002; Lamunu et al., 2004)
11	Gabon & ROC	Oct 2001–Mar 2002	Memdamba Entsiami, Abolo and Ambomi Ekata Oloba Etakangaye Grand Etoumbi	EBOV	(WHO, 2003; Milleliri et al., 2004; Nkoghe et al., 2005; Pourrut et al., 2005)
12	ROC	Dec 2002–Apr 2003	Yembelangoye Nearby hunting camp Mvoula	EBOV	(WHO, 2003; Pourrut et al., 2005)
13	ROC	Oct–Dec 2003	Mbandza	EBOV	(Boumandouki et al., 2005)
14	South Sudan	Apr–Jun 2004	Forests bordering Yambio	SUDV	(WHO, 2005; Onyango et al., 2007)
15	ROC	Apr–May 2005	Odzala National Park	EBOV	(Nkoghe et al., 2011)
16	DRC	May–Nov 2007	Mombo Mounene 2 market	EBOV	(Leroy et al., 2009)
17	Uganda	Aug–Dec 2007	Kabango	BDBV	(Towner et al., 2008; MacNeil et al., 2010; Wamala et al., 2010)
18	DRC	Nov 2008–Feb 2009	Luebo	EBOV	(Grard et al., 2011)
19	Uganda	May 2011	Nakisamata	SUDV	(Shoemaker et al., 2012)
20	DRC	July–Nov 2012	Isiro	BDBV	(CDC, 2014; WHO, 2012b)
21	Uganda	July–Oct 2012	Nyanswiga	SUDV	(CDC, 2014; WHO, 2012a)
22	Uganda	Nov 2012–Jan 2013	Luwero District	SUDV	(WHO, 2012c; CDC, 2014)
23	Guinea	Dec 2013 -	Meliandou	EBOV	(Baize et al., 2014; Bausch and Schwarz, 2014)

DRC = Democratic Republic of the Congo, ROC = Republic of Congo.

DOI: [10.7554/eLife.04395.004](https://doi.org/10.7554/eLife.04395.004)

the early stages of infection) a single individual may be responsible for directly infecting a large number of others (*Brady et al., 2014*). In the outbreak in Gabon in 1996, a single person was responsible for infecting ten other individuals (*Milleliri et al., 2004*) whilst in the 1995 outbreak in the DRC, thirty five cases resulted from one individual (*Khan et al., 1999*). Secondary transmission can be restricted by effective case detection and isolation measures (*Shoemaker et al., 2012; WHO, 2014c*). Where this cannot be achieved, either due to a lack of infrastructure, poor understanding of the disease, or distrust of medical practices, secondary cases can continue to occur (*Khan et al., 1999; Larkin, 2003; Hewlett et al., 2005*). As the number of infections grows, the ability of healthcare systems to control the further spread diminishes and the risk of a large outbreak increases.

The recent outbreak in Guinea and surrounding countries indicate that the previous paradigm for Ebola outbreaks is shifting (*Briand et al., 2014; Chan, 2014*). The last 40 years of EVD outbreaks were accompanied by considerable changes in demographic patterns throughout Africa. There has been a large increase in population size coupled with increasing urbanisation (*Cohen, 2004; Seto et al., 2012; Linard et al., 2013*). African populations have also become better connected internally and internationally (*Linard et al., 2012; Huang and Tatem, 2013*). Only recently have we begun to understand the dynamic nature of these travel patterns (*Garcia et al., 2014; Gonzalez et al., 2008; Simini et al., 2012; Wesolowski et al., 2013, 2012*) which have been clearly demonstrated to influence disease transmission over different temporal and spatial scales (*Hufnagel et al., 2004; Yang et al., 2008; Stoddard et al., 2009; Talbi et al., 2010; Brockmann and Helbing, 2013; Pindolia et al., 2014*). Changes in land use and penetration into previously remote areas of rainforest bring humans into contact with potential new reservoirs (*Daszak, 2000*), while changes in human mobility and connectivity will likely have profound impacts on the dispersion of Ebola cases during outbreaks. These conditions are thought to have a major role in setting the stage for the current outbreak.

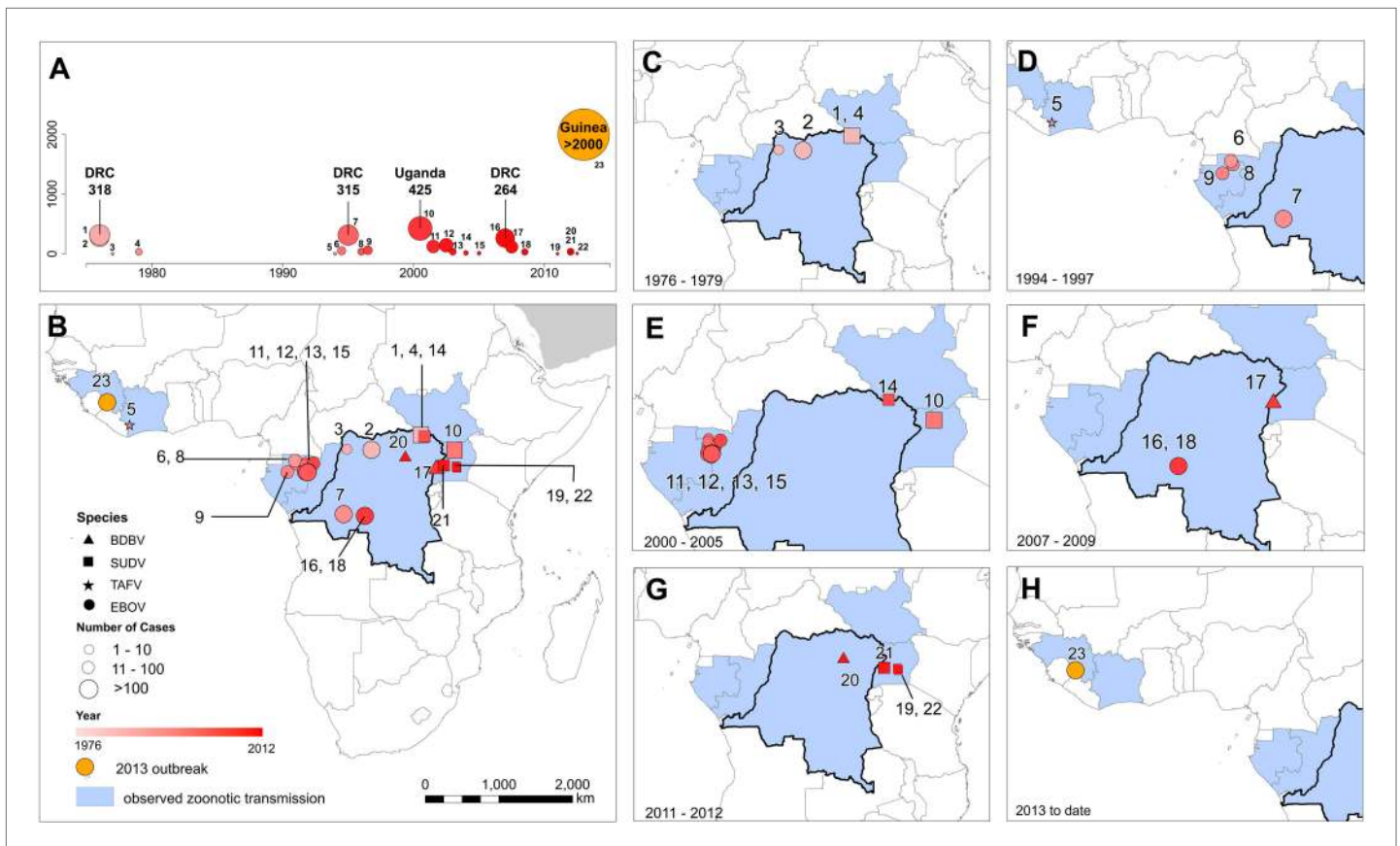
This paper aims to define the areas suitable for zoonotic transmission of *Ebolavirus* (i.e., those routes defined in **Figure 1** excluding human-to-human transmission) through species distribution modelling techniques. The fundamental niche of a species can be conceptualised as the confluence of environmental conditions that support its presence in a particular location (*Franklin, 2009*). Species distribution models quantitatively describe this niche based on known occurrence records of the organism and their associated environmental conditions, enabling predictions of the likely geographic distribution of the species in other regions (*Elith and Leathwick, 2009*). The era of satellites and geographical information systems has made high resolution global data on environmental conditions increasingly available (*Hay et al., 2006; Weiss et al., 2014b*). Species distribution modelling using flexible machine learning approaches have been successfully applied to map the global distributions of disease vectors (*Sinka et al., 2012*) and pathogens such as dengue (*Bhatt et al., 2013*), influenza (*Gilbert et al., 2014*) and leishmaniasis (*Pigott et al., 2014*).

Previous studies applied the GARP (Genetic Algorithm for Rule-set Production) species distribution modelling approach (*Stockwell and Peters, 1999*) to the locations of 12 Ebola outbreaks in humans between 1976 and 2002 to map the likely distribution of Ebola viruses (*Peterson et al., 2004a*) and as a mechanism to identify potential reservoir hosts (*Peterson et al., 2004b; Peterson et al., 2007*). Here we update and improve the maps of the zoonotic transmission niche of EVD by: (i) incorporating more recent outbreak data from outside the formerly predicted niche of EVD; (ii) integrating for the first time data on outbreaks in primates and the occurrence of the virus in the suspected Old World fruit bat (OWFB) reservoirs; (iii) using new satellite-derived information on bespoke environmental covariates from Africa, including new distribution maps of the OWFB; and (iv) using new increasingly flexible niche mapping techniques in the modelling framework. To elucidate the relevance of these maps for transmission, we have also calculated the population at risk of primary spillover outbreaks from the zoonotic niche of EVD in Africa, and we investigated the changing nature of the populations within this niche.

## Results

### Reported EVD outbreaks

In total, 23 outbreaks of Ebola virus were identified in humans across Africa, consisting of a hypothesised 30 independent primary infection events (**Table 1; Figure 2**). These outbreaks span the last 40 years from the first outbreaks in 1976 to the five outbreaks that have occurred since 2010 (**Table 1**). The locations of the index cases span from West Africa, with the most westerly outbreak ongoing in Guinea, to Gabon, the Republic of Congo (ROC), the DRC, South Sudan and Uganda. Before December



**Figure 2.** The locations of Ebola virus disease outbreaks in humans in Africa. (A) Illustrates the 23 reported outbreaks of Ebola virus disease through time, with the area of each circle and its position along the y-axis representing the number of cases. The onset year is represented by the colour as per (B). (B) Shows a map of the index cases for each of these outbreaks. (C–H) Show these outbreaks over a series of time periods. Numbers refer to outbreaks as listed in [Table 1](#). In (B–H) the species of Ebola virus responsible for the outbreak is illustrated by the symbol shape, the number of resulting cases and onset date by symbol colour. The most recent outbreak (#23) is indicated in orange. Countries in which zoonotic transmission to humans has been reported or is assumed to have occurred are coloured in blue. In each map the Democratic Republic of Congo is outlined for reference.

DOI: [10.7554/eLife.04395.005](https://doi.org/10.7554/eLife.04395.005)

2013, a total of 2322 cases had occurred from *Ebolavirus* infections, a number already overtaken by the likely underreported current case count of the ongoing outbreak >2250 ([WHO, 2014a](#)) ([Figure 2A](#)). Of the four viruses circulating in Africa, *Zaire ebolavirus* has been responsible for the most outbreaks (13), followed by *Sudan ebolavirus* (7) and *Bundigbuyo ebolavirus* with just two outbreaks in 2007/8 and 2012. Tai Forest has caused one confirmed infection in humans, from which the patient recovered ([Le Guenno et al., 1995](#); [Formenty et al., 1999](#)). Although outbreaks have been reported since 1976, there was an absence of reported outbreaks in humans for 15 years between 1979 and 1994 (although antibodies in humans were identified over the period [[Kuhn, 2008](#)]) and the frequency of outbreaks has increased substantially post 2000 ([Figure 2A](#)).

### Reported Ebola virus infections in animals

A total of 51 surveyed locations reporting infections in animals were identified in the literature since the discovery of the disease ([Table 2](#); [Figure 3](#)). These comprised 17 infections in gorillas (*Gorilla gorilla*), nine infections in chimpanzees (*Pan troglodytes*), 18 in OWFB and 2 in duikers (*Cephalophus* spp.). A large proportion of the great ape cases originated from the ROC/Gabon border, coinciding with the main known distributions of both chimpanzees and gorillas ([Petter and Desbordes, 2013](#)) and representing a period of well-documented great ape Ebola outbreaks in and around the Lossi Animal Sanctuary ([Rouquet et al., 2005](#); [Bermejo et al., 2006](#); [Walsh et al., 2009](#)). All animal isolations of Ebola viruses have come from countries that have also reported index cases of human outbreaks, with the exception of several seropositive bats from a survey in southern Ghana.

**Table 2.** Locations of reported infections with Ebola virus in animals

Site	Country	Date range	Location	Species	Diagnosis	Reference
1	Côte d'Ivoire	Oct–Nov 1994	Tai Forest	Chimpanzee	Serology	( <i>Formenty et al., 1999</i> )
2	Gabon	Jan 1996	Mayiboth 2	Chimpanzee	PCR	( <i>Lahm et al., 2007</i> )
3	Gabon	Jul 1996	Near Booue	Chimpanzee	Serology	( <i>Georges-Courbot et al., 1997</i> )
4	Gabon	Sept 1996	Lope National Park	Chimpanzee	PCR	( <i>Lahm et al., 2007</i> )
5	Gabon & ROC	Aug 2001	Mendemba/Lossi Animal Sanctuary	Chimpanzee	PCR	( <i>Lahm et al., 2007</i> )
6	Gabon & ROC	Aug 2001	Mendemba/Lossi Animal Sanctuary	Gorilla	PCR	( <i>Lahm et al., 2007</i> )
7	Gabon & ROC	Aug 2001	Mendemba/Lossi Animal Sanctuary	<i>Cephalophus dorsalis</i>	PCR	( <i>Lahm et al., 2007</i> )
8	Gabon	Nov 2001	Zadie	Gorilla	PCR	( <i>Rouquet et al., 2005</i> )
9	Gabon	Nov 2001	Ekata	Gorilla	PCR	( <i>Wittmann et al., 2007</i> )
10	Gabon	Dec 2001	Medemba and neighbouring villages	Chimpanzee and Gorilla	PCR	( <i>Leroy et al., 2002</i> )
11	Gabon	Feb 2002	Zadie	Gorilla	PCR	( <i>Rouquet et al., 2005</i> )
12	Gabon	Feb 2002	Ekata	Various bat species	Serology	( <i>Leroy et al., 2005</i> )
13	Gabon	Mar 2002	Zadie	Gorilla	PCR	( <i>Rouquet et al., 2005</i> )
14	Gabon	Mar 2002	Grand Etoumbi	Gorilla	PCR	( <i>Wittmann et al., 2007</i> )
15	Gabon	Apr 2002	Ekata	Gorilla	PCR	( <i>Wittmann et al., 2007</i> )
16	ROC	May 2002	Oloba	Chimpanzee	PCR	( <i>Lahm et al., 2007</i> )
17	ROC	Dec 2002	Lossi Animal Sanctuary	Gorilla	PCR	( <i>Rouquet et al., 2005</i> )
18	ROC	Dec 2002	Lossi Animal Sanctuary	Gorilla	PCR	( <i>Rouquet et al., 2005</i> )
19	ROC	Dec 2002	Lossi Animal Sanctuary	Chimpanzee	Serology	( <i>Rouquet et al., 2005</i> )
20	ROC	Dec 2002	Lossi Animal Sanctuary	Gorilla	PCR	( <i>Rouquet et al., 2005</i> )
21	ROC	Dec 2002	Lossi Animal Sanctuary	Gorilla	PCR	( <i>Rouquet et al., 2005</i> )
22	ROC	Dec 2002	Lossi Animal Sanctuary	<i>Cephalophus</i> spp.	PCR	( <i>Rouquet et al., 2005</i> )
23	Gabon	Feb 2003	Mbomo	Various bat species	PCR	( <i>Leroy et al., 2005</i> )
24	ROC	Feb 2003	Lossi Animal Sanctuary	Gorilla	Serology	( <i>Rouquet et al., 2005</i> )
25	Gabon	Feb 2003	Lossi Animal Sanctuary	Chimpanzee	PCR	( <i>Wittmann et al., 2007</i> )
26	Gabon	Jun 2003	Mbomo	Various bat species	PCR and serology	( <i>Leroy et al., 2005</i> )
27	ROC	Jun 2003	Near Mbomo and Ozala National Park	<i>Epomops franqueti</i>	Serology	( <i>Pourrut et al., 2009</i> )
28	ROC	Jun 2003	Near Mbomo and Ozala National Park	<i>Hypsignathus monstrosus</i>	Serology	( <i>Pourrut et al., 2009</i> )
29	ROC	Jun 2003	Near Mbomo and Ozala National Park	<i>Myonycteris torquata</i>	Serology	( <i>Pourrut et al., 2009</i> )

Table 2. Continued on next page



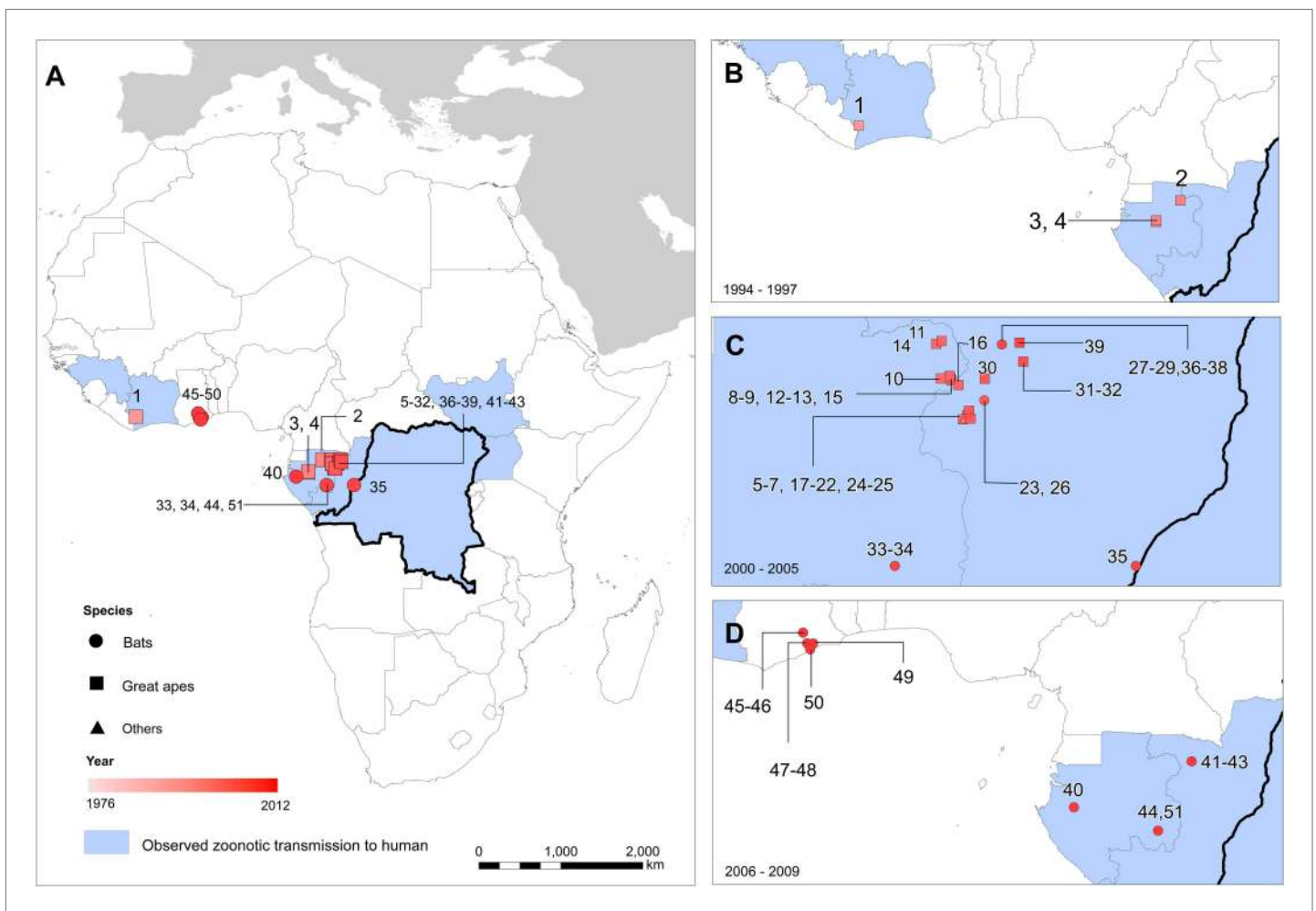
Table 2. Continued

Site	Country	Date range	Location	Species	Diagnosis	Reference
30	ROC	Jun 2003	Mbanza	Gorilla	PCR	( <a href="#">Rouquet et al., 2005</a> )
31	ROC	Jan–Jun 2004	Lokoué	Gorilla	Reported	( <a href="#">Caillaud et al., 2006</a> )
32	ROC	May 2004	Lokoué	Gorilla	PCR	( <a href="#">Wittmann et al., 2007</a> )
33	Gabon	Feb 2005	Near Franceville	<i>Epomops franqueti</i>	Serology	( <a href="#">Pourrut et al., 2009</a> )
34	Gabon	Feb 2005	Near Franceville	<i>Myonycteris torquata</i>	Serology	( <a href="#">Pourrut et al., 2009</a> )
35	Gabon	Apr 2005	Near Lambarene	<i>Epomops franqueti</i> and <i>Hypsignathus monstrosus</i>	Serology	( <a href="#">Pourrut et al., 2007</a> )
36	ROC	May 2005	Near Mbomo and Ozala National Park	<i>Epomops franqueti</i>	Serology	( <a href="#">Pourrut et al., 2009</a> )
37	ROC	May 2005	Near Mbomo and Ozala National Park	<i>Hypsignathus monstrosus</i>	Serology	( <a href="#">Pourrut et al., 2009</a> )
38	ROC	May 2005	Near Mbomo and Ozala National Park	<i>Myonycteris torquata</i>	Serology	( <a href="#">Pourrut et al., 2009</a> )
39	ROC	Jun 2005	Odzala National Park	Gorilla	PCR	( <a href="#">Wittmann et al., 2007</a> )
40	Gabon	Feb 2006	Near Tchibanga	Various bat species	Serology	( <a href="#">Pourrut et al., 2009</a> )
41	ROC	May 2006	Near Mbomo and Ozala National Park	<i>Epomops franqueti</i>	Serology	( <a href="#">Pourrut et al., 2009</a> )
42	ROC	May 2006	Near Mbomo and Ozala National Park	<i>Hypsignathus monstrosus</i>	Serology	( <a href="#">Pourrut et al., 2009</a> )
43	ROC	May 2006	Near Mbomo and Ozala National Park	<i>Myonycteris torquata</i>	Serology	( <a href="#">Pourrut et al., 2009</a> )
44	Gabon	Oct 2006	Near Franceville	<i>Epomops franqueti</i>	Serology	( <a href="#">Pourrut et al., 2009</a> )
45	Ghana	May 2007	Sagyimase	<i>Epomops franqueti</i>	Serology	( <a href="#">Hayman et al., 2012</a> )
46	Ghana	May 2007	Sagyimase	<i>Hypsignathus monstrosus</i>	Serology	( <a href="#">Hayman et al., 2012</a> )
47	Ghana	May 2007	Adoagyir	<i>Epomophorus gambianus</i>	Serology	( <a href="#">Hayman et al., 2012</a> )
48	Ghana	May 2007	Adoagyir	<i>Epomops franqueti</i>	Serology	( <a href="#">Hayman et al., 2012</a> )
49	Ghana	Jun 2007	Oyibi	<i>Epomophorus gambianus</i>	Serology	( <a href="#">Hayman et al., 2012</a> )
50	Ghana	Jan 2008	Accra	<i>Eidolon helvum</i>	Serology	( <a href="#">Hayman et al., 2010</a> )
51	Gabon	Mar 2008	Near Franceville	<i>Epomops franqueti</i>	Serology	( <a href="#">Pourrut et al., 2009</a> )

ROC = Republic of Congo.  
DOI: [10.7554/eLife.04395.006](https://doi.org/10.7554/eLife.04395.006)

### Predicted distribution of suspected reservoir species of bats

Three species of bats, *Hypsignathus monstrosus*, *Myonycteris torquata* and *Epomops franqueti*, were identified as the most likely candidates to be reservoir species for Ebola viruses due to high



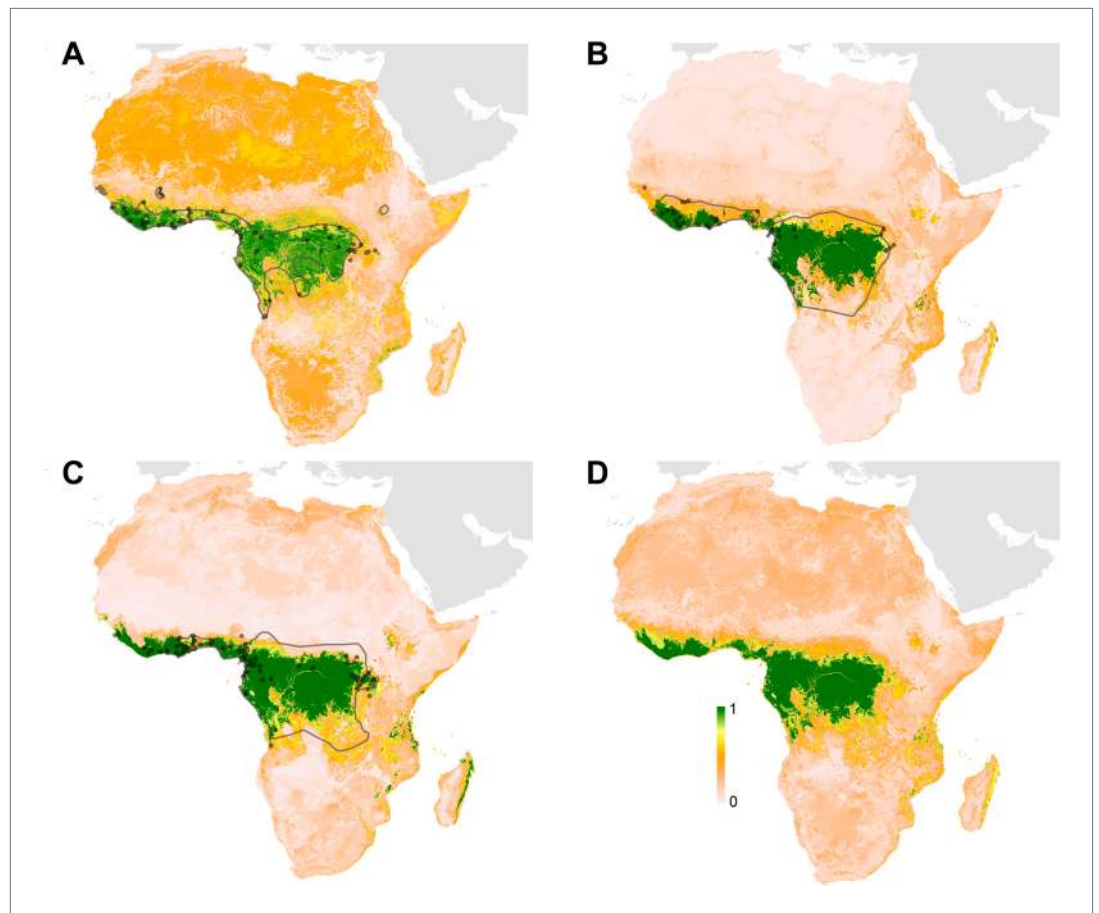
**Figure 3.** The locations of reported Ebola virus infection in animals in Africa. (A) Shows the locations of reported Ebola virus infection in animals. (B–D) Show these records in animals over three different time periods. Numbers refer to records as listed in [Table 2](#). In all panels, the species in which infection was detected is given by symbol shape and the year recorded by symbol colour. Blue countries represent locations where zoonotic transmission to humans has been reported or is assumed to have occurred. In each map the Democratic Republic of Congo is outlined for reference.

DOI: [10.7554/eLife.04395.007](https://doi.org/10.7554/eLife.04395.007)

seroprevalence and the isolation of RNA closely related to *Zaire ebolavirus* (Leroy et al., 2005; Olival and Hayman, 2014). In total, 239 locations were identified from the Global Biodiversity Information Facility (GBIF) (GBIF, 2014): 67 for *H. monstrosus* (Figure 4A), 52 for *M. torquata* (Figure 4B) and 120 for *E. franqueti* (Figure 4C). Distribution models for all three species demonstrated predictive skill (indicated by an area under the curve (AUC) greater than 0.5) as follows: *H. monstrosus* AUC  $0.63 \pm 0.04$ ; *M. torquata* AUC =  $0.59 \pm 0.04$ ; *E. franqueti* AUC =  $0.58 \pm 0.03$ ,  $n = 50$  submodels for all three species. In addition, each species was broadly predicted within its considered expert opinion range (Figure 4A–C) (Schipper et al., 2008). The marginal effect plots (not shown) were strongly influenced by land surface temperature (LST) and vegetation (as measured by the enhanced vegetation index [EVI]). The predicted combined distribution of these species (Figure 4D), covers West and Central Africa, specifically the moist forests of the northeastern, western and central Congo basin, and Guinea, as well as the Congolian coastal forest ecoregions (WWF, 2014).

### Predicted environmental suitability for zoonotic transmission of Ebola

The predicted environmental niche for zoonotic transmission of EVD is shown in Figure 5. All countries with observed index cases of EVD ( $n = 7$ , hereafter Set 1) have areas of the highest environmental suitability (see list in Table 1). In addition, areas of high environmental suitability for zoonotic



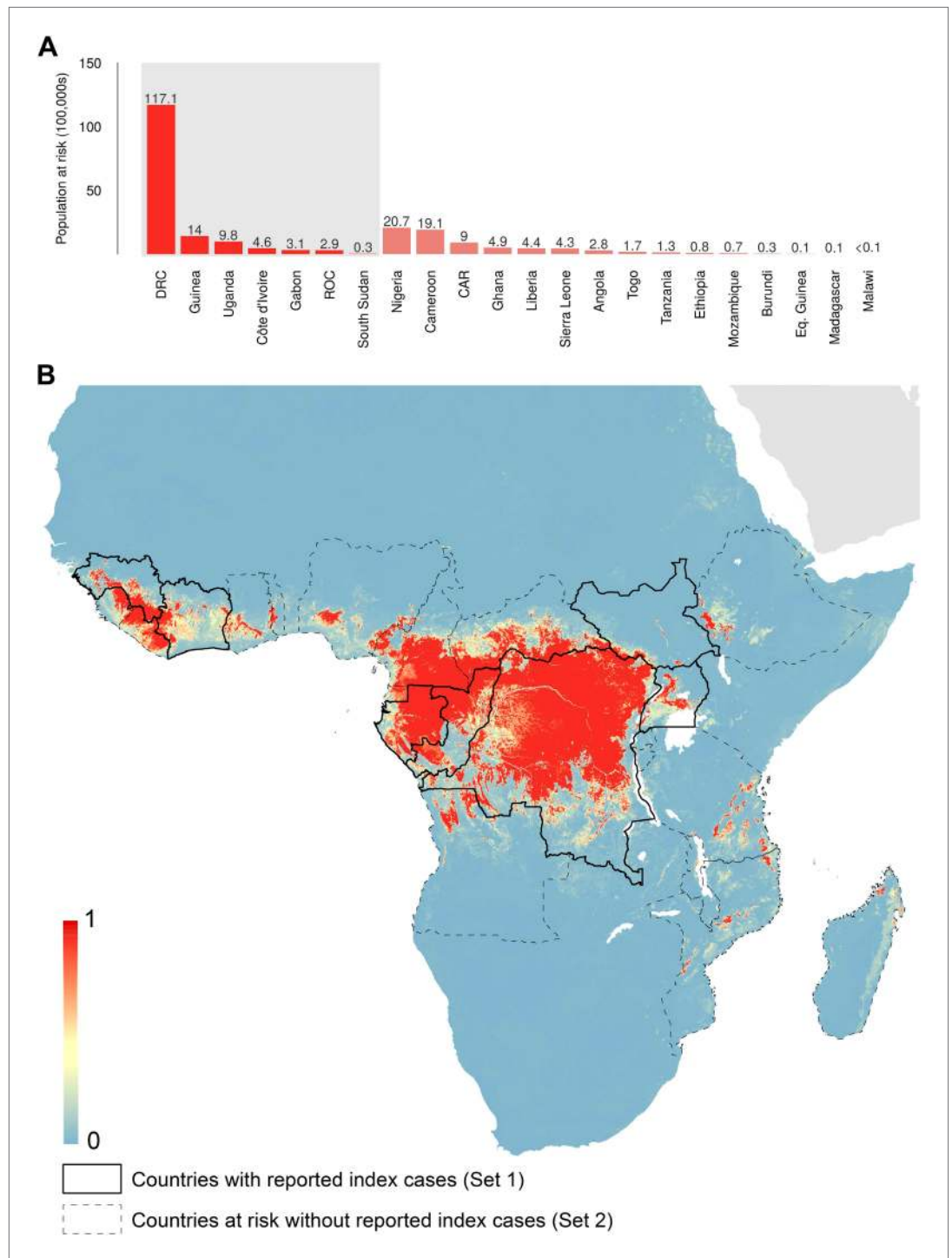
**Figure 4.** Predicted geographical distribution of the three species of Megachiroptera suspected to reservoir Ebola virus. (A) Shows the distribution of the hammer-headed bat (*Hypsignathus monstrosus*), (B) The little collared fruit bat (*Myonycteris torquata*) and (C) Franquet's epauletted fruit bat (*Epomops franqueti*). In each map, the locations of reported observations of each species, extracted from the Global Biodiversity Information Facility (GBIF, 2014) and used to train each model are given as grey points (*H. monstrosus*,  $n = 67$ ; *E. franqueti*,  $n = 120$  and *M. torquata*,  $n = 52$ ). Expert opinion maps of the known range of each species, generated by the IUCN (Schipper *et al.*, 2008), are outlined in grey. The colour legend represents a scale of the relative probability that the species occurs in that location from 0 (white, low) to 1 (green, high). Area under the curve statistics, calculated under a stringent ten-fold cross validation procedure, are  $0.63 \pm 0.04$ ,  $0.59 \pm 0.04$  and  $0.58 \pm 0.03$  for *H. monstrosus*, *M. torquata* and *E. franqueti* respectively. (D) Is a composite distribution map giving the mean, relative probability of occurrence from (A–C).

DOI: [10.7554/eLife.04395.008](https://doi.org/10.7554/eLife.04395.008)

transmission are predicted in a further 15 countries where, to date, index cases of the four African species of *Ebolavirus* have not been recorded. These are Nigeria, Cameroon, Central African Republic (CAR), Ghana, Liberia, Sierra Leone, Angola, Tanzania, Togo, Ethiopia, Mozambique, Burundi, Equatorial Guinea, Madagascar and Malawi (hereafter Set 2).

The AUC for the Ebola model was relatively high ( $AUC = 0.85 \pm 0.04$ ,  $n = 500$  submodels) indicating that the model could strongly distinguish regions of environmental suitability for EVD. Enhanced vegetation index had the greatest impact on the distribution (relative contribution [RC] of 65.3%) followed by elevation (RC = 11.7%), night-time land surface temperature (LST) (RC = 7.7%), potential evapotranspiration (PET) (RC = 5.7%) and combined bat distribution (RC = 3.8%). Marginal effect plots are presented in **Figure 5—figure supplement 2**.

In total, 22.2 million people are predicted to live in areas suitable for zoonotic transmission of Ebola. The vast majority, 21.7 million (approximately 97%), live in rural areas, as opposed to urban or peri-urban areas (CIESIN/IFPRI/WB/CIAT, 2007; WorldPop, 2014). Of these, 15.2 million are in Set 1 and 7 million are in Set 2. In terms of ranked populations at risk, DRC, Guinea and Uganda are highest



**Figure 5.** Predicted geographical distribution of the zoonotic niche for Ebola virus. **(A)** Shows the total populations living in areas of risk of zoonotic transmission for each at-risk country. The grey rectangle highlights countries in which index cases of Ebola virus disease have been reported (Set 1); the remainder are countries in which risk of zoonotic transmission is predicted, but in which index cases of Ebola have not been reported (Set 2). These countries are ranked by population at risk within each set. The population at risk Figure in 100,000 s is given above each bar. **(B)** Shows the predicted distribution of zoonotic Ebola virus. The scale reflects the relative probability that zoonotic transmission of Ebola virus could occur at these locations; areas closer to 1 (red) are more likely to harbour zoonotic transmission than those closer to 0 (blue). Countries with borders outlined are those which are predicted to contain at-risk areas for zoonotic transmission based on a thresholding approach (see 'Materials and methods'). *Figure 5. Continued on next page*

Figure 5. Continued

The area under the curve statistic, calculated under a stringent 10-fold cross-validation procedure is  $0.85 \pm 0.04$ . Solid lines represent Set 1 whilst dashed lines delimit Set 2. Areas covered by major lakes have been masked white.

DOI: [10.7554/eLife.04395.009](https://doi.org/10.7554/eLife.04395.009)

The following figure supplements are available for figure 5:

**Figure supplement 1.** Covariates used in predicting zoonotic transmission niche of Ebola.

DOI: [10.7554/eLife.04395.010](https://doi.org/10.7554/eLife.04395.010)

**Figure supplement 2.** Marginal effect plots for each covariate used in the Ebola virus distribution model.

DOI: [10.7554/eLife.04395.011](https://doi.org/10.7554/eLife.04395.011)

**Figure supplement 3.** Comparison of predictions for zoonotic niche of Ebola virus excluding the Guinea outbreak.

DOI: [10.7554/eLife.04395.012](https://doi.org/10.7554/eLife.04395.012)

in Set 1 and Nigeria, Cameroon and CAR are top in Set 2. For a full listing of these populations living in areas of risk, see the stacked bar plot in **Figure 5A**.

## National level demographic and mobility changes

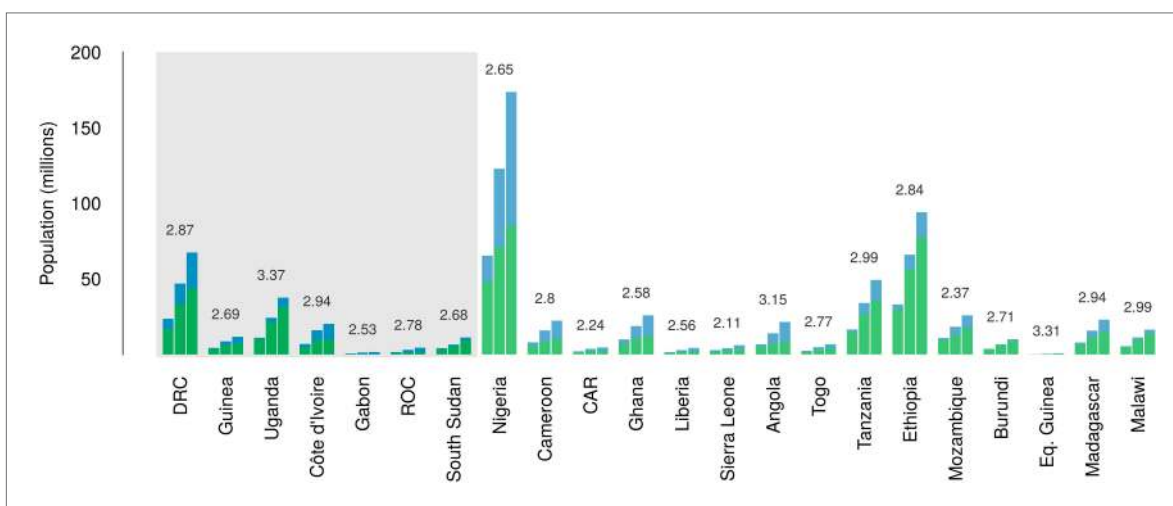
Over the 40 year period since discovery of EVD, the total population living in those countries predicted to be within the zoonotic niche has nearly tripled (from 230 million to 639 million) and the proportion of the population in these countries living in an urban (rather than rural) setting has changed from 25.5% to 59.2% (**Figure 6**).

Data on the connectivity of human populations over this period were not available. We can infer however, intuitively, empirically and theoretically (*Zipf, 1946; Simini et al., 2012*) that rates of population movement within a country will scale directly in proportion to population growth.

## International connectivity by airline traffic

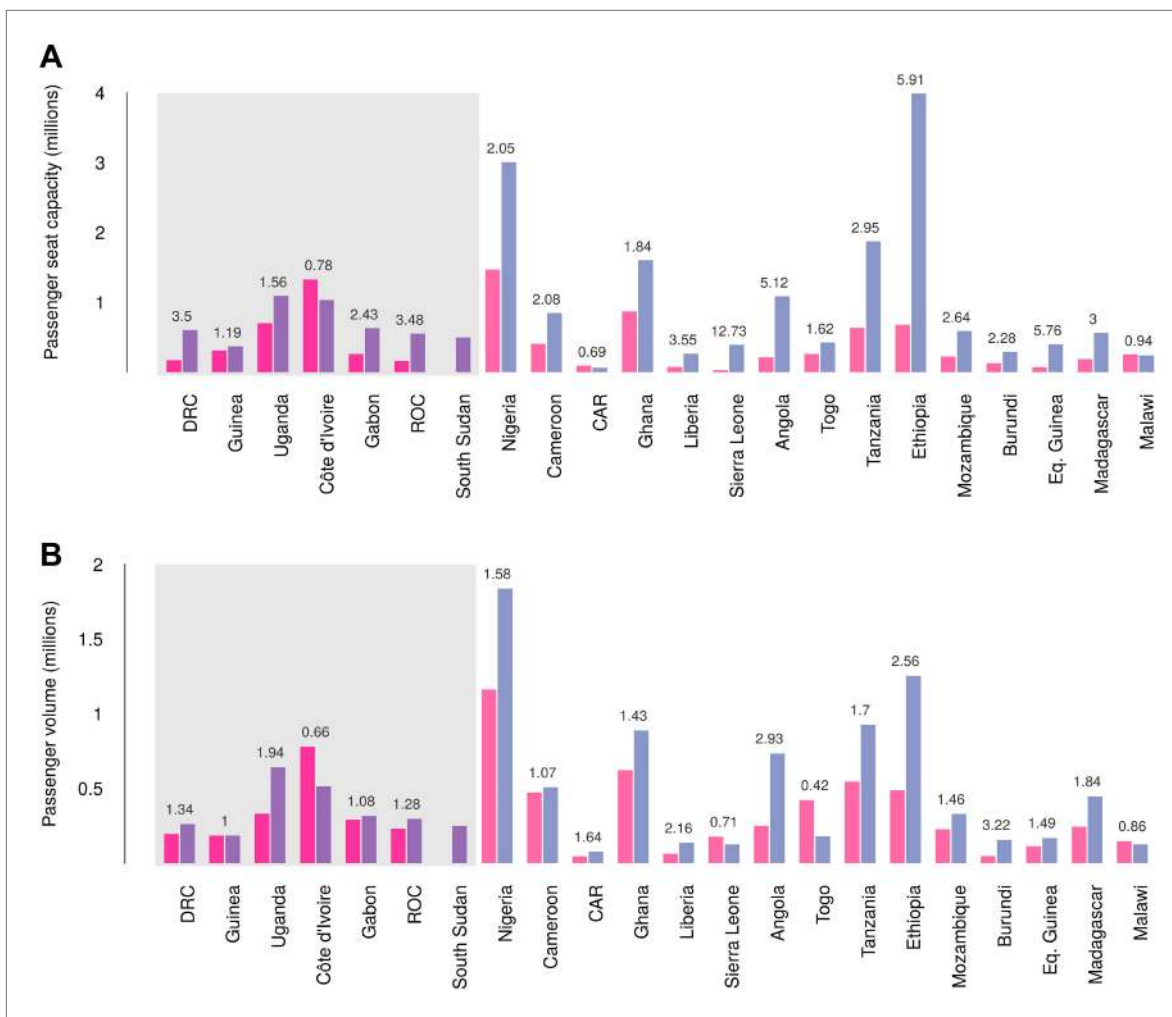
Records of passenger seat capacity are available since 2000 and show substantive increases over the period in Set 1 (from 2.96 to 4.77 million, a fractional change of 1.61) and Set 2 (from 5.6 to 15.6 million, a change of 2.8) (**Figure 7A**). More specific data on passenger volumes show almost universally similar increases since 2005 with Set 1 nations changing from 2 million to 2.5 million, a fractional change of 1.22 and Set 2 changing from 5 million to 7.9 million, a change of 1.57 (**Figure 7B**).

Global analysis of airline passenger volumes demonstrates that international connectivity has increased amongst all global regions and national income strata (**Figure 8**). Total passenger volumes



**Figure 6.** Changes in national population for countries predicted to contain areas at-risk of zoonotic Ebola virus transmission. For each country the population (in millions) is presented for three time periods (1976, 2000 and 2014) as three bars. Each stacked bar gives the rural (green) and urban (blue) populations of the country. The grey rectangle highlights countries in which index cases of Ebola virus diseases have been reported (Set 1); the remainder are countries in which risk of zoonotic transmission is predicted, but where index cases have not been reported (Set 2). The fractional change in population between 1976 and 2014 is given above each set of bars.

DOI: [10.7554/eLife.04395.013](https://doi.org/10.7554/eLife.04395.013)



**Figure 7.** Changes in international flight capacity and traveller volumes for countries predicted to contain areas at-risk of zoonotic Ebola virus transmission. The grey rectangle highlights countries in which index cases of EVD have been reported (Set 1). The remainder are countries in which risk of zoonotic transmission is predicted, but where index cases have not been reported (Set 2). **(A)** Shows changes in annual outbound international seat capacity (between 2000 in red and 2013 in blue). **(B)** Depicts changes in annual outbound international passenger volume by country (between 2005 in red and 2012 in blue). For each country, the fractional change in volume is given above each set of bars. Note that only one bar is presented for South Sudan as data for this region prior to formation of the country in 2011 were unavailable.

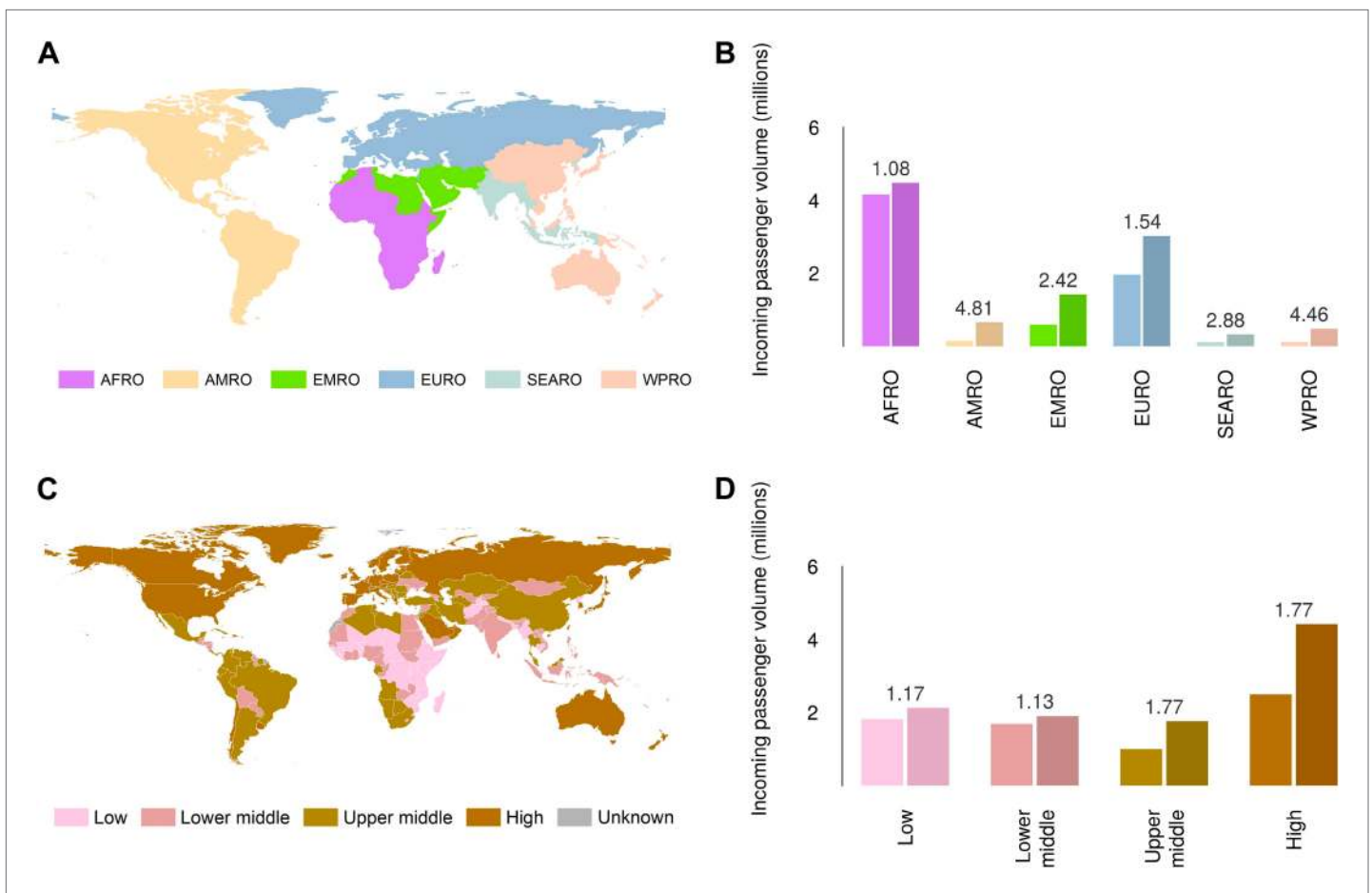
DOI: [10.7554/eLife.04395.014](https://doi.org/10.7554/eLife.04395.014)

have increased by a third from 9.5 to over 14 million during the eight year window (2005–2012) where records are available. The largest increases have occurred in WHO regions (*WHO, 2014b*) outside of the sub-Saharan African region (AFRO) (*Figure 8A,B*). In 2012, almost half of the final destinations of those travelling from these at-risk countries were to other AFRO nations (47%). Other frequent destinations were in Europe (EURO; 27%) and the Eastern Mediterranean (EMRO; 13%). Similarly, analysis of passenger volumes by World Bank national income groupings (*WHO, 2014b*) (*Figure 8C,D*) show that in 2012 40% of all passenger final destinations were to low or low-middle income countries.

## Discussion

### Summary of the main findings

We have re-evaluated the zoonotic niche for EVD in Africa. In doing so we have (i) used all existing outbreaks to assemble an inventory of index cases ( $n = 30$ ); (ii) added to this all confirmed records of Ebola virus in animals ( $n = 51$ ); (iii) assembled more accurate and contemporary environmental covariates including new maps of the distribution of confirmed OWFB reservoirs of the disease; and (iv) used



**Figure 8.** Numbers of airline passengers arriving from at-risk countries to other countries stratified by major geographic regions and national income groups. **(A)** Shows the locations of WHO regions (AFRO–African Region; AMRO–Region of the Americas; EMRO–Eastern Mediterranean Region; EURO–European Region; SEARO–South-East Asian Region; WPRO–Western Pacific Region). **(B)** Displays the numbers of passengers arriving in each of these regions from countries predicted to contain areas at risk of zoonotic Ebola virus transmission (Sets 1 and 2) in 2005 and 2012. **(C)** Shows the income tiers of all countries as defined by the World Bank. **(D)** Displays the total numbers of passengers arriving in countries in each of these income strata from at-risk countries in 2005 and 2012. The number above each pair of bars indicates the fractional change in these numbers of incoming passengers between 2005 and 2012.

DOI: 10.7554/eLife.04395.015

the latest niche modelling techniques to predict the geographic distribution of potential zoonotic transmission of the disease. Using these predictions we have estimated the populations at risk of EVD both in countries which have confirmed index cases (Set 1,  $n = 7$ ) and those for which we predict strong environmental suitability for outbreaks (Set 2,  $n = 15$ ). In all countries at risk we show that since the discovery of EVD in 1976, urban and rural populations have increased and have become more interconnected both within and across national borders. During the last 40 years the increasing size and connectivity of these populations may have facilitated the subsequent spread of EVD outbreaks. These factors underline a change in the way in which EVD interacts with human populations.

### Interpreting the zoonotic niche

The remote and isolated nature of Ebola zoonotic transmission events, paired with the relatively poor diagnostics and understanding of the disease transmission routes in early outbreaks, mean that under-reporting of previous outbreaks is probable. An increasing understanding and description of a broader range of symptoms used in case definitions of EVD (Leroy *et al.*, 2000; Feldmann and Geisbert, 2011) also increase the possibility that past outbreaks may have been misattributed to different diseases (Tignor *et al.*, 1993). This poor detectability of EVD also clearly limits capacity to accurately

identify the locations and transmission routes of index cases (Heymann *et al.*, 1980; Baize *et al.*, 2014). We must assume, as has been done previously (Peterson *et al.*, 2004a; Jones *et al.*, 2008), that the first reported cases are representative of the true location of the index cases. Where possible we have represented this geographic uncertainty by attributing the index case to a wide-area polygon which then incorporated this uncertainty into the mapping process (see 'Materials and methods').

The relationship between the EVD niche and the environmental covariates (Figure 5—figure supplement 2), particularly the high relative contribution of the vegetation index, underscore that there are clear environmental limits to transmission of the virus from animals to humans, and that ecoregions dominated by rainforest are the primary home of such zoonotic cycles. Our analysis has shown that the zoonotic niche of the pathogen is more widespread than previously predicted or appreciated (Peterson *et al.*, 2004a), most notably in West Africa.

This analysis used information from all human outbreaks and animal infections to delineate the likely zoonotic niche of the disease. Further analysis, excluding the existing outbreak focussed in Guinea from the dataset used to train the model (Figure 5—figure supplement 3), still resulted in prediction of high suitability in this region, with the presumed index village located within 5 km of an at-risk pixel. This implies that the eco-epidemiological situation in Guinea is very similar to that in past outbreaks, mirroring phylogenetic similarity in the causative viruses (Dudas and Rambaut, 2014; Gire *et al.*, 2014). The ecological similarity between the past and current outbreaks also lends support to the notion that the scale of this outbreak is more heavily influenced by patterns of human-to-human transmission than any expansion of the zoonotic niche.

### Interpreting population at risk

It is important to appreciate that this zoonotic niche map delineates areas in which populations are at-risk of zoonotic transmission of EVD (Figure 5B). It does not predict the likelihood of EVD spillover, the likelihood of an outbreak establishing, or its subsequent rate of spread within a population. Increasing human encroachment and certain cultural practices sometimes linked with poverty, such as bushmeat hunting, result in increasing exposure of humans to animals which may harbour diseases including Ebola (Daszak, 2000; Wolfe *et al.*, 2005, 2007). Increasing human population may accelerate the degree of risk through these processes but spatially refined information on these factors is not available comprehensively. It is hoped that as the understanding of the risk factors for zoonotic transmission of *Ebolavirus* to humans increases, it will be possible to incorporate this information into future risk mapping assessments.

Previous considerations of the geographic distribution of EVD have used human outbreaks alone. We have updated this work to include the last decade of outbreaks, as well as disaggregated outbreaks where evidence suggests multiple independent zoonotic transmission events overlap in space and time. Furthermore, our modelling process accommodates uncertainty in geospatial positioning of these index cases by utilising both point and polygon data. In addition, we include occurrence of infection in wildlife, important to the wider scale of zoonotic transmission (Figure 1), which in total has increased the dataset used in the model to 81 occurrences. The rareness of EVD outbreaks and the prevalence of detectable Ebola virus in reservoir species suggests that there will always be a limited set of observation data when compared to mapping of more prevalent zoonoses (Pigott *et al.*, 2014). The results demonstrate predictive skill using a stringent validation procedure, however, indicating strong model performance even with this relatively limited observation dataset.

A broad zoonotic niche is predicted across 22 countries in Central and West Africa. Whilst several of these countries have reported index cases of EVD, others have not, although serological evidence in some regions points to possible underreporting of small-scale outbreaks (Kuhn, 2008). With improved ecological understanding, particularly with improvements to our knowledge of specific reservoir species and their distributions, it may be possible to delineate areas not at risk due to the absence of these species.

Despite relatively a large population living in areas of risk and the widespread practice of bushmeat hunting in these predicted areas (Wolfe *et al.*, 2005; Mfunda and Røskoft, 2010; Brashares *et al.*, 2011; Kamins *et al.*, 2011), *Ebolavirus* is rare both in suspected animal reservoirs (Leroy *et al.*, 2005; Olival and Hayman, 2014) and in terms of human outbreaks (Table 1). There is some indication however, that the frequency of Ebola outbreaks has increased since 2000, as shown in Figure 2A. We have shown that the human population living within this niche is larger, more mobile and better internationally connected than when the pathogen was first observed. As a result, when spillover events do



occur, the likelihood of continued spread amongst the human population is greater, particularly in areas with poor healthcare infrastructure (*Briand et al., 2014; Fauci, 2014*).

Whilst rare in comparison to other high burden diseases prevalent in this region, such as malaria (*Gething et al., 2011; Murray et al., 2012*), Ebola outbreaks can have a considerable economic and political impact, and the subsequent destabilisation of basic health care provisioning in affected regions increases the toll of unrecorded morbidity and mortality of more common infectious diseases (*Murray et al., 2014; Wang et al., 2014*), throughout and after the epidemic period. The number of concurrent infections during the present outbreak represents a significant strain on healthcare systems that are already poorly provisioned (*Briand et al., 2014; Chan, 2014; Fauci, 2014*) and many other Set 1 and Set 2 countries rank amongst the lowest per capita healthcare spenders. These considerations should be paramount when international organizations debate the financing requirements for the improvement of healthcare needed in the region and the urgency with which new therapeutics and vaccines can be brought into production (*Brady et al., 2014; Goodman, 2014*).

Together, these considerations necessitate prioritisation of efforts to reinforce and improve existing surveillance and control, and encourage the development of therapeutics and vaccines. The national population at risk estimates presented here would be a strong rationale for improving, prioritising and stratifying surveillance for EVD outbreaks and diagnostic capacity in these countries. We believe it would be prudent to test OWFB species in Set 2 countries for Ebola virus (*Hayman et al., 2012*), particularly during the bat breeding season to maximise chances of isolation in order to clarify the outbreak risk in these countries. In all Set 1 and Set 2 countries, raising awareness about the risk presented by reservoir bats and incidental primate hosts and the modes of transmission of this disease could be of value. Finally, increasing our capacity to rapidly map ever changing biological threats is also a core need (*Hay et al., 2013b*).

### Interpreting International connectivity

The increasing connectedness of the Africa region means that EVD is now a problem of international concern. While most EVD secondary transmission occurs locally and is likely transported via ground transit (*Francesconi et al., 2003*), the potential for international spread of infection is possible, as demonstrated by the importation of the disease from Liberia to Nigeria, culminating in further secondary transmission in Lagos (*WHO, 2014a*). The aetiology of EVD infection and disease progression means that an international outbreak propagated by air travel remains unlikely, particularly in high-income countries better able to handle EVD cases (*Fauci, 2014*). Nevertheless, a non-negligible threat remains, particularly in the low and middle income destinations and the rapid increase in global connectivity of these at-risk regions indicates that international airports could see more imported cases (*Chan, 2014*).

### Future work

We have focussed on reanalysing the zoonotic niche for EVD transmission and the characterisation of the populations at risk to improve the landscape in which future risk and impact of EVD outbreaks can be discussed. During the current emergency much of the work will concentrate on routes of secondary transmission in the human population—conceptually the red arrow of the H box in **Figure 1**. An important task is to stratify the risk of EVD spread both within and between countries and identify the most likely pathways of spread for characterisation and surveillance. Our next priority therefore is to investigate aspects of secondary human-to-human transmission by documenting the rate of geographic spread of EVD during the past and ongoing epidemics to help understand changes in these patterns in the historical record. Simulating these movements in a real landscape of population movement patterns, inferred from population movements assessed by mobile phones and other data (*Garcia et al., 2014*), as well as parametric movement models (*Simini et al., 2013*) is a logical next step, and can be used in future targeting of interventions and potential new treatments for both the current and future outbreaks (*Brady et al., 2014; Goodman, 2014*).

As previously discussed, whilst there is the risk of human travel during the latent phase of infection, and therefore potential for international spread, the high pathogenicity during infectiousness (immobilising infected persons) and the likely rapid and effective isolation measures implemented in regions with strong health care systems, limit the pandemic potential of EVD. Nevertheless, improvement of international containment plans and informed discussions of potential risks to airline carriers and populations of other regions will be supported by knowledge of local, regional and international population flows. Assessing these flows by air traffic volumes is an ongoing priority.

There are several other zoonotic viral haemorrhagic fevers (for example *Marburgvirus*, Lassa fever, hantaviral infections and arenaviruses) that are of similar public health and biosecurity concern (**Bannister, 2010**), due to their high virulence and mortality and their potential to cause outbreaks and spread internationally. Despite this their geographical distributions are poorly understood (**Hay et al., 2013a**). Many of the methods applied here can be adapted to these diseases and improve our geographical understanding of the risk presented by these pathogens.

We are in the midst of a public health emergency that will likely last for many more months (**Chan, 2014**) and which has brought EVD to global attention. We emphasise that the maps of zoonotic transmission presented here do not enable assessment of secondary transmission rates in human populations, but they do act as an evidenced-based indicator of locations with potential for future zoonotic transmission and thus outbreaks. Interestingly, early reports of another independent zoonotic outbreak in the DRC (**MSF, 2014**) are in predicted at-risk areas. An improved understanding of the spatial extent of the zoonotic niche can only help future efforts in biosurveillance.

## Materials and methods

### Methodological overview

A boosted regression tree (BRT) modelling framework was used to generate predictive risk maps of the zoonotic Ebola virus niche in Africa. This methodology combines regression trees, where trees are built according to optimal decision rules based on how binary decisions best accommodate a given dataset (**De'ath, 2007; Elith et al., 2008**), and boosting, which selects the tree that minimises the loss function. In doing so, a parameter space is defined which captures the greatest amount of variation present in the dataset. In order to train the model, four component datasets were compiled: (i) a comprehensive dataset of the reported locations of Ebola virus transmission from a zoonotic reservoir to a human; (ii) a dataset of the locations of Ebola virus infections in suspected reservoir and (non-human) susceptible host species (iii) a suite of ecologically relevant environmental covariates for Africa, including predicted distribution maps of suspected reservoir bat species and (iv) background (or pseudo-absence) records representing locations where zoonotic Ebola virus has not been reported. This study was limited to the African continent since no natural outbreaks of EVD have occurred outside the continent (**CDC, 2014**). Only *Reston ebolavirus* has a distribution reported outside of Africa, focussed in the Philippines, but has never been reported as pathogenic in humans; as a result this species was not included in the analysis.

### Identifying index cases and reconstructing zoonotic transmission events in space and time

Tables detailing proven outbreaks of Ebola virus, initially sourced from the scientific literature (**Kuhn, 2008**) and from health reporting organisations (**CDC, 2014**), were used to coordinate searches of the formal scientific literature using Web of Science and PubMed for each specific outbreak. Relevant papers were abstracted and where possible outbreak-specific epidemiological surveys were sourced. The citations in these references were obtained in order to reconstruct the outbreak in detail and to identify the most probable index case. Index cases were defined as any human infection resulting from interaction with non-human sources of the disease. Some of these cases arose from presumed interactions with zoonotic reservoirs or hosts, such as primates and other mammals during hunting trips (**Boumandouki et al., 2005; Nkoghe et al., 2005, 2011; WHO, 2003**) or butchering of bats (**Leroy et al., 2009**). Any cases arising from existing human infections are considered as secondary infections rather than index cases. Similar to methodology employed elsewhere (**Messina et al., 2014**), the site, or supposed site, of this zoonotic transmission event was geopositioned using Google Earth. For locations where precise geographic information (e.g., geographic coordinates of a hunting camp) was provided by the authors, these were used. Where precise geographic information could not be accurately geopositioned, a geographic area (termed a polygon) was defined covering the reported region. In several cases only the first reported patient could be identified, with the source of infection unknown. With these outbreaks the location of the first patient was geopositioned under the assumption that an initial zoonotic spillover event occurred in the vicinity of this location. In two outbreaks multiple independent zoonotic transmission events were identified (**WHO, 2003; Nkoghe et al., 2005; Pourrut et al., 2005**), and each unique event was geopositioned and included in the model as separate entities. **Table 1** catalogues the outbreaks used in this study.

## Assembling a database of reported infections in animals

A literature search was conducted in Web of Science using the search term “Ebola” that returned 8635 citations. The abstracts were examined and for those that contained possible data on animal Ebola infection, the full text was obtained. The sampling site or location of the animal in the study was identified and geotagged using Google Maps. These locations were recorded either as precise locations or as polygons, as with human index cases. Records for which local transmission of Ebola virus was deemed unlikely (e.g., seropositive primates tested in containment facilities several years after their capture) were excluded from the study. The non-human Ebola virus occurrence data collected are detailed in **Table 2**, including the diagnostic methods used.

## GenBank isolates

The open access sequence database GenBank (**NCBI, 2014**) was searched using MESH Umbrella search terms for Ebola virus, returning 181 results. These were then manually cross-referenced with the existing human and animal Ebola information, collected above, and 30 duplicates were removed. For the remaining isolates, original references and GenBank information fields were examined, but as there was insufficient information to establish precise location of isolation and/or whether the isolate represented an index case for any of these data sources, they were excluded from subsequent analyses.

## Covariates assembled and used in the analyses

A suite of ecologically relevant gridded environmental covariates for Africa was compiled, each having a nominal resolution of 5 km × 5 km. The environmental covariates used in this analysis were: elevation (from the shuttle radar topography mission [**ORNL DAAC, 2000**]); the mean value, and a measure of spatial variation (range, described below) between 2000 and 2012 of Enhanced Vegetation Index (EVI), daytime Land Surface Temperature (LST) and night-time LST; and mean potential evapotranspiration from 1950–2000 (**Trabucco and Zomer, 2009**) (**Figure 5—figure supplement 1**).

The EVI and LST datasets were derived from satellite imagery collected by NASA's Moderate Resolution Imaging Spectroradiometer (MODIS) remote sensing platform (**Tatem et al., 2004**). EVI is a metric designed to characterise vegetation density and vigour based on the ratio of absorbed photosynthetically active radiation to near infrared radiation (**Huete et al., 2002**). LST is a modelled product derived from emissivity as measured by the MODIS thermal sensor (**Wan and Li, 1997**), which is correlated, though not synonymous with air temperature, and effective for differentiating landscapes based on a combination of thermal energy and properties of surface types. The MODIS datasets utilized in this research (EVI was derived from the MCD43B4 product and the MOD11A2 LST product was used directly) were acquired as composite datasets created using imagery collected over multiple days, a procedure that results in products with 8-day temporal resolutions. Despite compositing, the EVI and LST datasets contained gaps due to persistent cloud cover found in forested equatorial regions, and these gaps were filled using a previously described approach (**Weiss et al., 2014a**). The EVI and LST datasets were then aggregated from their native 1 km × 1 km spatial resolution to a final 5 km × 5 km resolution, calculating both the mean and the range of the values of the subpixels making up each larger pixel. These spatial summaries therefore characterise both the mean temperature in each location as well as the degree of spatial heterogeneity within that pixel. This is of interest as humans and susceptible species are more likely to come into contact in transitional areas (e.g., boundary areas between areas of highly suitable susceptible species habitat and areas heavily utilised by humans). The final covariate production step consisted of summarising temporally across the 13-year data archive to produce synoptic datasets devoid of annual or seasonal anomalies (**Weiss et al., 2014a**).

## Implicated bat reservoir distributions

Over recent years, significant research has been undertaken in investigating the role bats have to play in the transmission cycle of Ebola viruses (**Olival and Hayman, 2014**) and evidence of asymptomatic infection in fruit bats has been documented to varying extents (**Leroy et al., 2005; Pourrut et al., 2007, 2009; Hayman et al., 2010; Hayman et al., 2012**). In order to incorporate this potential driver of Ebola virus transmission into the model we developed predicted distribution maps for three species of fruit bat implicated as primary reservoirs of the disease: *Hypsignathus monstrosus*, *Epomops franqueti* and *Myonycteris torquata*. The evidence was strongest for these three species having a reservoir role

as Ebola virus RNA (all nested within the *Zaire ebolavirus* phylogeny [Leroy et al., 2005]) has been detected in all three. Whilst a handful of other bat species have been found to be seropositive, no further viral isolations have been recorded (Olival and Hayman, 2014).

Whilst expert opinion range maps for these species exist (Schipper et al., 2008), there is some disagreement with independently-sourced occurrence data (all archived in the Global Biodiversity Information Facility). As a result, a predictive modelling approach was used to create a continuous surface of habitat suitability for these species which we then included as a predictor in the model. Occurrence data for all Megachiroptera in Africa was extracted from GBIF (GBIF, 2014) using the R packages *dismo* (Hijmans et al., 2014) and *taxize* (Chamberlain et al., 2014). To remove apparently erroneous records in the GBIF archive all occurrence records more than 100 km from the species known ranges, as determined by expert-opinion range maps (Schipper et al., 2008), were excluded, as were duplicate records and those located in the ocean. This resulted in a total dataset of 1341 unique occurrence records.

The occurrence database was then used to train separate boosted regression tree species distribution models (Elith et al., 2008) to predict the likely distribution of each of these suspected reservoir species. For each model, occurrence records for the target species (*H. monstrosus*,  $n = 67$ ; *E. franqueti*,  $n = 120$ ; and *M. torquata*,  $n = 52$ ) were considered presence records and occurrence records of all other species were used as background records. This procedure is designed to account for the potentially biasing effect of spatial variation in recording of Megachiroptera occurrences (Phillips et al., 2009).

For each species we ran fifty submodels each trained to a randomly selected bootstrap of this dataset, subject to the constraint that each bootstrap contained a minimum of 10 occurrence and 10 background records. Each submodel was fitted using the *gbm.step* subroutine (Elith et al., 2008) in the *dismo* R package. In each submodel the background records were down weighted so that the weighted sum of presence records equalled the weighted sum of background records (Barbet-Massin et al., 2012) in order to maximise the discrimination capacity of the model. We generated a prediction map from each of these submodels and calculated both the mean prediction and 95% confidence interval around the prediction for each 5 km × 5 km pixel for each species.

Model accuracy was assessed by calculating the mean area under the curve (AUC) statistic for each submodel under a stringent 10-fold cross validation for each submodel and obtaining the mean and standard deviation across all 50 submodels. Under this procedure the dataset was split into ten subsets, each containing approximately equal numbers of presence and background points. The ability of a model trained on each subset to predict the distribution of the other 90% of records was assessed by AUC and the mean value taken. As so few presence records were used to train each fold model (i.e., around 5 presence records for *M. torquata* up to 12 for *E. franqueti*), this represents a very stringent test of the model's predictive capacity. Additionally, to prevent inflation of the accuracy statistics due to spatial sorting bias, these statistics were estimated using a pairwise distance sampling procedure (Hijmans, 2012). Consequently, the AUC statistics presented here are lower than would be returned by standard procedures but gives a more realistic quantification of the model's ability to extrapolate predictions to new regions (Wenger and Olden, 2012). We also generated marginal effect plots with associated uncertainty intervals and relative contribution statistics (how often each covariate was selected during the model fitting process) as quantification of the sensitivity of the model to the different covariates. These allow us to make inferences about the ecological relationship between each species and its environment as well as to identify where this relationship is most uncertain.

To generate a single surface describing the distribution of the bat reservoir species to be used as a covariate in the subsequent Ebola modelling, the three mean prediction distribution maps were merged by taking the average habitat suitability for each of the three bat species at each pixel.

## Ebola distribution modelling

The Ebola virus occurrence dataset was supplemented with a background record dataset generated by randomly sampling 10,000 locations across Africa, biased towards more populous areas as a proxy for reporting bias (Phillips et al., 2009). We fitted 500 submodels to bootstraps of this dataset. To account for uncertainty in the geographic location of those occurrences reported as polygons, for each submodel one point was randomly selected from each of these occurrence polygons. This Monte

Carlo procedure enabled the model to efficiently integrate over the environmental uncertainty associated with imprecise geographic data. A bootstrap sample was then taken from each of these datasets and used to train the BRT model using the same procedure and weighting of background records as for the bat distribution models. Similarly, we generated a prediction map from each of these models and calculated both the mean prediction and corresponding 95% confidence intervals for each pixel and analysed prediction accuracy using the same stringent cross validation and sensitivity analysis procedure as for the bat distribution models (detailed above).

The predicted distribution map produced by this approach represents the environmental suitability of each pixel for zoonotic Ebola virus transmission. This may be interpreted as a relative probability of presence in the sense that more suitable pixels are more likely to contain zoonotic transmission than less suitable pixels, though not an absolute probability that transmission occurs in a given pixel. Similarly, the presence of zoonotic transmission increases the risk of transmission to a human, though this is also contingent on how humans interact with these zoonotic pools, through hunting or other activities.

## Population living in areas of environmental suitability for zoonotic transmission

In order to identify areas which are likely to be at risk of transmission of *Ebolavirus* from zoonotic reservoir hosts to humans, the continuous map of the predicted environmental suitability for zoonotic transmission (shown in **Figure 5**) was converted into a binary map classifying pixels as either at risk or not at risk. A pixel was assumed to be at risk if its predicted environmental suitability for zoonotic Ebola virus transmission was greater than 0.673, the lowest suitability value predicted at the locations of known transmission to humans (point records of human index cases). Countries containing at least one at-risk pixel are shown in **Figure 5B**—those countries that previously report an index case were defined as Set 1; countries with at least one at-risk pixel with no previous index cases of EVD were categorised as Set 2. The number of people living in at-risk areas in each of these countries was calculated by summing the estimated population of at-risk pixels using population density maps from the AfriPop project (**Linard et al., 2012; WorldPop, 2014**) and the proportion of those living in urban, periurban and rural areas was evaluated using the Global Rural Urban Mapping Project (**CIESIN/IFPRI/WB/CIAT, 2007**).

The R code used for all of the analysis has been made available on an open source basis ([https://github.com/SEEG-Oxford/ebola\\_zoonotic](https://github.com/SEEG-Oxford/ebola_zoonotic)).

## National level demographic and mobility data

For three separate years (1976, 2000 and 2014), total national populations were retrieved and the proportion of rural to urban populations noted from World Bank statistics (**World Bank, 2014**). To describe global air travel patterns from Set 1 and Set 2 countries, flight schedules data from the Official Airline Guide, reflecting an estimated 95% of all commercial flights worldwide, were analysed between 2000 and 2013 to calculate the annual volume of seats on direct flights that depart from each predicted country and which have an international destination. Complementing these seat capacity data, worldwide data on anonymised, individual passenger flight itineraries from the International Air Transport Association (2012) (**IATA, 2014**) were analysed between 2005 and 2012 to calculate the annual volume of international passenger departures out of each Set 1 and Set 2 country. The IATA dataset represents an estimated 93% of the world's commercial air traffic at the passenger level and includes points of departure and arrival and final destination information for travellers as well as their connecting flights.

## Acknowledgements

We thank Katherine Battle, Maria Devine and Kirsten Duda for proof-reading and Jane Messina for creating **Figure 1**. We also thank Andrew Rambaut for his comments on the final draft.

---

## Additional information

### Competing interests

SIH: Reviewing editor, *eLife*. The other authors declare that no competing interests exist.

## Funding

Funder	Grant reference number	Author
University Of Oxford	Sir Richard Southwood Graduate Scholarship	David M Pigott
Bill and Melinda Gates Foundation	OPP1053338	Nick Golding
Medical Research Council	K00669X	Peter W Gething
Biotechnology and Biological Sciences Research Council	Studentship	Oliver J Brady
German Academic Exchange Service	Graduate Scholarship	Moritz UG Kraemer
U.S. National Library of Medicine	R01LM010812	John S Brownstein, Sumiko R Mearu
7th Framework Programme for Research and Technological Development (EU FP7)	602525	Peter W Horby
Canadian Institutes of Health Research		Isaac I Bogoch, Kamran Khan
Wellcome Trust	095066	Adrian Mylne, Simon I Hay
RAPIDD program of the Science & Technology Directorate		Andrew J Tatem, Simon I Hay
Fogarty International Center		Andrew J Tatem, Simon I Hay
Bill and Melinda Gates Foundation	OPP1106023	Zhi Huang, Andrew J Henry, Catherine L Moyes
Bill and Melinda Gates Foundation	OPP1068048	Daniel J Weiss, Samir Bhatt
Bill and Melinda Gates Foundation	OPP1093011	Catherine L Moyes, John S Brownstein, Sumiko R Mearu, Simon I Hay
National Institute of Allergy and Infectious Diseases	U19AI089674	Andrew J Tatem
Bill and Melinda Gates Foundation	OPP1106427	Andrew J Tatem
Bill and Melinda Gates Foundation	OPP1032350	Andrew J Tatem

The funders had no role in study design, data collection and interpretation, or the decision to submit the work for publication.

## Author contributions

DMP, Advised and assembled the outbreak and animal infection data, Wrote the article; NG, Extracted the bat data, Conducted all of the analysis, Drafting or revising the article; AM, Assembled and geo-positioned the outbreak and animal infection data, Drafting or revising the article; ZH, Geo-positioned the outbreak and animal infection data, Provided all maps, Drafting or revising the article; AJH, Analysed international flight data, Helped assemble maps, Drafting or revising the article; IIB, Assisted with international transportation analysis, Edited the final draft of the article; SRM, Assisted in geositeing, Drafting or revising the article; AJT, Provided information on urban change and migration data, Drafting or revising the article; KK, Provided data, Conducted all analyses on international air traffic patterns, Drafting or revising the article; DJW, Assembled the covariate layers, Drafting or revising the article; SB, Extracted Ebola information from GenBank, Drafting or revising the article; OJB, Screened GenBank data, Provided **Figure 2A**, Drafting or revising the article; MUGK, DLS, CLM, Analysis and interpretation of data, Drafting or revising the article; PWG, Assembled the covariate layers, Drafting or revising the article; PWH, JSB, Advised on international public health context, Edited the final draft of the article; SIH, Conceived the work and analysis, Wrote content and edited the article at all stages of development, Acts as guarantor of the paper

## Author ORCIDs

David M Pigott,  <http://orcid.org/0000-0002-6731-4034>

Nick Golding,  <http://orcid.org/0000-0001-8916-5570>

David L Smith,  <http://orcid.org/0000-0003-4367-3849>

Simon I Hay,  <http://orcid.org/0000-0002-0611-7272>

## References

- Amblard J**, Obiang P, Edzang S, Prehaud C, Bouloy M, Guenno BL. 1997. Identification of the Ebola virus in Gabon in 1994. *Lancet* **349**:181–182. doi: [10.1016/S0140-6736\(05\)60984-1](https://doi.org/10.1016/S0140-6736(05)60984-1).
- Baize S**, Pannetier D, Oestereich L, Rieger T, Koivogui L, Magassouba N, Soropogui B, Sow MS, Keita S, De Clerck H, Tiffany A, Dominguez G, Loua M, Traoré A, Kolié M, Malano ER, Heleze E, Bocquin A, Mély S, Raoul H, Caro V, Cadar D, Gabriel M, Pahlmann M, Tappe D, Schmidt-Chanasit J, Impouma B, Diallo AK, Formenty P, Van Herp M, Günther S. 2014. Emergence of Zaire Ebola virus disease in Guinea - preliminary report. *The New England Journal of Medicine* doi: [10.1056/NEJMoa1404505](https://doi.org/10.1056/NEJMoa1404505).
- Bannister B**. 2010. Viral haemorrhagic fevers imported into non-endemic countries: risk assessment and management. *British Medical Bulletin* **95**:193–225. doi: [10.1093/Bmb/Ldq022](https://doi.org/10.1093/Bmb/Ldq022).
- Barbet-Massin M**, Jiguet F, Albert CH, Thuiller W. 2012. Selecting pseudo-absences for species distribution models: how, where and how many? *Methods in Ecology and Evolution* **3**:327–338. doi: [10.1111/j.2041-210X.2011.00172.x](https://doi.org/10.1111/j.2041-210X.2011.00172.x).
- Baron RC**, McCormick JB, Zubeir OA. 1983. Ebola virus disease in southern Sudan: hospital dissemination and intrafamilial spread. *Bulletin of the World Health Organization* **61**:997–1003.
- Barrette RW**, Metwally SA, Rowland JM, Xu LZ, Zaki SR, Nichol ST, Rollin PE, Townner JS, Shieh WJ, Batten B, Sealy TK, Carrillo C, Moran KE, Bracht AJ, Mayr GA, Sirios-Cruz M, Catbagan DP, Lautner EA, Ksiazek TG, White WR, McIntosh MT. 2009. Discovery of swine as a host for the Reston ebolavirus. *Science* **325**:204–206. doi: [10.1126/science.1172705](https://doi.org/10.1126/science.1172705).
- Bausch DG**, Schwarz L. 2014. Outbreak of Ebola virus disease in Guinea: where ecology meets economy. *PLOS Neglected Tropical Diseases* **8**:e3056. doi: [10.1371/journal.pntd.0003056](https://doi.org/10.1371/journal.pntd.0003056).
- Beer B**, Kurth R, Bukreyev A. 1999. Characteristics of Filoviridae: Marburg and Ebola viruses. *Die Naturwissenschaften* **86**:8–17. doi: [10.1007/s001140050562](https://doi.org/10.1007/s001140050562).
- Bermejo M**, Rodríguez-Teijeiro JD, Illera G, Barroso A, Vilà C, Walsh PD. 2006. Ebola outbreak killed 5000 gorillas. *Science* **314**:1564. doi: [10.1126/science.1133105](https://doi.org/10.1126/science.1133105).
- Bhatt S**, Gething PW, Brady OJ, Messina JP, Farlow AW, Moyes CL, Drake JM, Brownstein JS, Hoen AG, Sankoh O, Myers MF, George DB, Jaenisch T, Wint GR, Simmons CP, Scott TW, Farrar JJ, Hay SI. 2013. The global distribution and burden of dengue. *Nature* **496**:504–507. doi: [10.1038/Nature12060](https://doi.org/10.1038/Nature12060).
- Boumandouki P**, Formenty P, Epelboin A, Campbell P, Atsangandoko C, Allarangar Y, Leroy EM, Kone ML, Molamou A, Dinga-Longa O, Salemo A, Kounkou RY, Mombouli V, Ibara JR, Gaturuku P, Nkunku S, Lucht A, Feldmann H. 2005. [Clinical management of patients and deceased during the Ebola outbreak from October to December 2003 in Republic of Congo]. *Bulletin de la Société de Pathologie Exotique* **98**:218–223.
- Brady OJ**, Hay SI, Horby P. 2014. Estimating vaccine and drug requirements for Ebola outbreaks. *Nature* **512**:7514. doi: [10.1038/512233a](https://doi.org/10.1038/512233a).
- Brashares JS**, Golden CD, Weinbaum KZ, Barrett CB, Okello GV. 2011. Economic and geographic drivers of wildlife consumption in rural Africa. *Proceedings of the National Academy of Sciences of USA* **108**:13931–13936. doi: [10.1073/pnas.1011526108](https://doi.org/10.1073/pnas.1011526108).
- Briand S**, Bertherat E, Cox P, Formenty P, Kiény MP, Myhre JK, Roth C, Shindo N, Dye C. 2014. The international Ebola emergency. *The New England Journal of Medicine* doi: [10.1056/NEJMp1409858](https://doi.org/10.1056/NEJMp1409858).
- Brockmann D**, Helbing D. 2013. The hidden geometry of complex, network-driven contagion phenomena. *Science* **342**:1337–1342. doi: [10.1126/science.1245200](https://doi.org/10.1126/science.1245200).
- Caillaud D**, Levréro F, Cristescu R, Gatti S, Dewas M, Douadi M, Gautier-Hion A, Raymond M, Ménard N. 2006. Gorilla susceptibility to Ebola virus: the cost of sociality. *Current Biology* **16**:R489–R491. doi: [10.1016/j.cub.2006.06.017](https://doi.org/10.1016/j.cub.2006.06.017).
- CDC**. 2014. Chronology of Ebola hemorrhagic fever outbreaks. Accessed: August 2014. Available: <http://www.cdc.gov/vhf/ebola/resources/outbreak-table.html>.
- Chamberlain S**, Szocs E, Boettiger C, Ram K, Bartomeus I, Baumgartner J. 2014. taxize: taxonomic information from around the web. *R package*. Accessed: August 2014. Available: <https://github.com/ropensci/taxize>.
- Chan M**. 2014. Ebola virus disease in West Africa - no early end to the outbreak. *The New England Journal of Medicine* online. doi: [10.156/NEJMp1409859](https://doi.org/10.156/NEJMp1409859).
- Chowell G**, Hengartner NW, Castillo-Chavez C, Fenimore PW, Hyman JM. 2004. The basic reproductive number of Ebola and the effects of public health measures: the cases of Congo and Uganda. *Journal of Theoretical Biology* **229**:119–126. doi: [10.1016/j.jtbi.2004.03.006](https://doi.org/10.1016/j.jtbi.2004.03.006).
- CIESIN/IFPRI/WB/CIAT**. 2007. Global Rural Urban Mapping Project (GRUMP): gridded population of the world, version 3. Accessed: December 2013. Available: <http://sedac.ciesin.columbia.edu/gpw>.
- Cohen B**. 2004. Urban growth in developing countries: a review of current trends and a caution regarding existing forecasts. *World Development* **32**:23–51. doi: [10.1016/j.worlddev.2003.04.008](https://doi.org/10.1016/j.worlddev.2003.04.008).
- Conrad JL**, Isaacson M, Smith EB, Wulff H, Crees M, Geldenhuys P, Johnston J. 1978. Epidemiologic investigation of Marburg virus disease, Southern Africa, 1975. *The American Journal of Tropical Medicine and Hygiene* **27**:1210–1215.

- Daszak P.** 2000. Emerging infectious diseases of wildlife - threats to biodiversity and human health. *Science* **287**:443–449. doi: [10.1126/science.287.5452.443](https://doi.org/10.1126/science.287.5452.443).
- De'ath G.** 2007. Boosted trees for ecological modeling and prediction. *Ecology* **88**:243–251. doi: [10.1890/0012-9658\(2007\)88\[243:BTFFEMA\]2.0.CO;2](https://doi.org/10.1890/0012-9658(2007)88[243:BTFFEMA]2.0.CO;2).
- Dudas G, Rambaut A.** 2014. Phylogenetic analysis of Guinea 2014 EBOV ebolavirus outbreak. *PLOS Currents* **6**:ecurrents.outbreaks.84eefe85ce43ec89dc80bf067f0f0677b0678b0417d. doi: [10.1371/currents.outbreaks.84eefe85ce43ec89dc80bf067f0f0677b0678b0417d](https://doi.org/10.1371/currents.outbreaks.84eefe85ce43ec89dc80bf067f0f0677b0678b0417d).
- ECDC.** 2014. *Outbreak of Ebola virus disease in West Africa*. Stockholm: ECDC. p. 17.
- Elith J, Leathwick JR.** 2009. Species distribution models: ecological explanation and prediction across space and time. *Annual Review of Ecology, Evolution, and Systematics* **40**:677–697. doi: [10.1146/annurev.ecolsys.110308.120159](https://doi.org/10.1146/annurev.ecolsys.110308.120159).
- Elith J, Leathwick JR, Hastie T.** 2008. A working guide to boosted regression trees. *The Journal of Animal Ecology* **77**:802–813. doi: [10.1111/j.1365-2656.2008.01390.x](https://doi.org/10.1111/j.1365-2656.2008.01390.x).
- Fauci AS.** 2014. Ebola - underscoring the global disparities in health care resources. *The New England Journal of Medicine* doi: [10.1056/NEJMp1409494](https://doi.org/10.1056/NEJMp1409494).
- Feldmann H, Geisbert TW.** 2011. Ebola haemorrhagic fever. *Lancet* **377**:849–862. doi: [10.1016/S0140-6736\(10\)60667-8](https://doi.org/10.1016/S0140-6736(10)60667-8).
- Formenty P, Boesch C, Wyers M, Steiner C, Donati F, Dind F, Walker F, Le Guenno B.** 1999. Ebola virus outbreak among wild chimpanzees living in a rain forest of Cote d'Ivoire. *The Journal of Infectious Diseases* **179**(suppl 1): S120–S126. doi: [10.1086/514296](https://doi.org/10.1086/514296).
- Francesconi P, Yoti Z, Declich S, Onek PA, Fabiani M, Olango J, Andraghetti R, Rollin PE, Opira C, Greco D, Salmaso S.** 2003. Ebola hemorrhagic fever transmission and risk factors of contacts, Uganda. *Emerging Infectious Diseases* **9**:1430–1437. doi: [10.3201/eid0911.030339](https://doi.org/10.3201/eid0911.030339).
- Franklin J.** 2009. *Mapping species distributions*. Cambridge: Cambridge University Press. p. 320.
- Garcia AJ, Pindolia DK, Lopiano KK, Tatem AJ.** 2014. Modeling internal migration flows in sub-Saharan Africa using census microdata. *Migration Studies* in press. doi: [10.1093/migration/mnu036](https://doi.org/10.1093/migration/mnu036).
- GBIF.** 2014. Global biodiversity information facility. Accessed: August 2014. Available: <http://www.gbif.org/>.
- Gear JS, Cassel GA, Gear AJ, Trappier B, Clausen L, Meyers AM, Kew MC, Bothwell TH, Sher R, Miller GB, Schneider J, Koornhof HJ, Gomperts ED, Isaäcson M, Gear JH.** 1975. Outbreak of Marburg virus disease in Johannesburg. *British Medical Journal* **4**:489–493. doi: [10.1136/bmj.4.5995.489](https://doi.org/10.1136/bmj.4.5995.489).
- Georges AJ, Leroy EM, Renaut AA, Benissan CT, Nabias RJ, Ngoc MT, Obiang PI, Lepage JP, Bertherat EJ, Bénoni DD, Wickings EJ, Amblard JP, Lansoud-Soukate JM, Milleliri JM, Baize S, Georges-Courbot MC.** 1999. Ebola hemorrhagic fever outbreaks in Gabon, 1994–1997: epidemiologic and health control issues. *The Journal of Infectious Diseases* **179**:S65–S75. doi: [10.1086/514290](https://doi.org/10.1086/514290).
- Georges-Courbot MC, Sanchez A, Lu CY, Baize S, Leroy E, Lansoud-Soukate J, Téli-Bénissan C, Georges AJ, Trappier SG, Zaki SR, Swanepoel R, Leman PA, Rollin PE, Peters CJ, Nichol ST, Ksiazek TG.** 1997. Isolation and phylogenetic characterization of Ebola viruses causing different outbreaks in Gabon. *Emerging Infectious Diseases* **3**:59–62. doi: [10.3201/eid0301.970107](https://doi.org/10.3201/eid0301.970107).
- Gething PW, Patil AP, Smith DL, Guerra CA, Elyazar IR, Johnston GL, Tatem AJ, Hay SI.** 2011. A new world malaria map: *Plasmodium falciparum* endemicity in 2010. *Malaria Journal* **10**:378. doi: [10.1186/1475-2875-10-378](https://doi.org/10.1186/1475-2875-10-378).
- Gilbert M, Golding N, Zhou H, Wint GR, Robinson TP, Tatem AJ, Lai S, Zhou S, Jiang H, Guo D, Huang Z, Messina JP, Xiao X, Linard C, Van Boeckel TP, Martin V, Bhatt S, Gething PW, Farrar JJ, Hay SI, Yu H.** 2014. Predicting the risk of avian influenza A H7N9 infection in live-poultry markets across Asia. *Nature Communications* **5**:4116. doi: [10.1038/ncomms5116](https://doi.org/10.1038/ncomms5116).
- Gire SK, Goba A, Andersen KG, Sealfon RSG, Park DJ, Kanneh L, Jalloh S, Momoh M, Fullah M, Dudas G, Wohl S, Moses LM, Yozwiak NL, Winnicki S, Matranga CB, Malboeuf CM, Qu J, Gladden AD, Schaffner SF, Yang X, Jiang PP, Nekoui M, Colubri A, Coomber MR, Fannie M, Moigboi A, Gbakie M, Kamara FK, Tucker V, Konuwa E, Saffa S, Sellu J, Jalloh AA, Kovoma A, Koninga J, Mustapha I, Kargbo K, Foday M, Yillah M, Kanneh F, Robert W, Massally JLB, Chapman SB, Bochicchio J, Murphy C, Nusbaum C, Young S, Birren BW, Grant DS, Scheffelin JS, Lander ES, Happi C, Gevaio SM, Gnirke A, Rambaut A, Garry RF, Khan SH, Sabeti PC.** 2014. Genomic surveillance elucidates Ebola virus origin and transmission during the 2014 outbreak. *Science* **345**:1369–1372. doi: [10.1126/science.1259657](https://doi.org/10.1126/science.1259657).
- Gonzalez MC, Hidalgo CA, Barabasi AL.** 2008. Understanding individual human mobility patterns. *Nature* **453**:779–782. doi: [10.1038/Nature06958](https://doi.org/10.1038/Nature06958).
- Goodman JL.** 2014. Studying “secret serums” - toward safe, effective Ebola treatments. *The New England Journal of Medicine*.
- Gostin LO, Lucey D, Phelan A.** 2014. The ebola epidemic: a global health emergency. *JAMA* E1–E2. doi: [10.1001/jama.2014.11176](https://doi.org/10.1001/jama.2014.11176).
- Grand G, Biek R, Tamfum JJM, Fair J, Wolfe N, Formenty P, Paweska J, Leroy E.** 2011. Emergence of divergent Zaire Ebola virus strains in Democratic Republic of the Congo in 2007 and 2008. *The Journal of Infectious Diseases* **204**:S776–S784. doi: [10.1093/infdis/jir364](https://doi.org/10.1093/infdis/jir364).
- Groseth A, Feldmann H, Strong JE.** 2007. The ecology of Ebola virus. *Trends in Microbiology* **15**:408–416. doi: [10.1016/j.tim.2007.08.001](https://doi.org/10.1016/j.tim.2007.08.001).
- Hay SI, Battle KE, Pigott DM, Smith DL, Moyes CL, Bhatt S, Brownstein JS, Collier N, Myers MF, George DB, Gething PW.** 2013a. Global mapping of infectious disease. *Philosophical Transactions of the Royal Society of London. Series B, Biological Sciences* **368**:20120250. doi: [10.1098/rstb.2012.0250](https://doi.org/10.1098/rstb.2012.0250).



- Hay SI**, George DB, Moyes CL, Brownstein JS. 2013b. Big data opportunities for global infectious disease surveillance. *PLOS Medicine* **10**:e1001413. doi: [10.1371/journal.pmed.1001413](https://doi.org/10.1371/journal.pmed.1001413).
- Hay SI**, Tatem AJ, Graham AJ, Goetz SJ, Rogers DJ. 2006. Global environmental data for mapping infectious disease distribution. *Advances in Parasitology* **62**:37–77. doi: [10.1016/S0065-308x\(05\)62002-7](https://doi.org/10.1016/S0065-308x(05)62002-7).
- Hayman DT**, Emmerich P, Yu M, Wang LF, Suu-Ire R, Fooks AR, Cunningham AA, Wood JL. 2010. Long-term survival of an urban fruit bat seropositive for Ebola and Lagos Bat viruses. *PLOS ONE* **5**:e11978. doi: [10.1371/journal.pone.0011978](https://doi.org/10.1371/journal.pone.0011978).
- Hayman DT**, Yu M, Cramer G, Wang LF, Suu-Ire R, Wood JL, Cunningham AA. 2012. Ebola virus antibodies in fruit bats, Ghana, West Africa. *Emerging Infectious Diseases* **18**:1207–1209. doi: [10.3201/eid1807.111654](https://doi.org/10.3201/eid1807.111654).
- Hewlett BS**, Epelboin A, Hewlett BL, Formenty P. 2005. Medical anthropology and Ebola in Congo: cultural models and humanistic care. *Bulletin de la Société de Pathologie Exotique* **98**:230–236.
- Heymann DL**, Weisfeld JS, Webb PA, Johnson KM, Cairns T, Berquist H. 1980. Ebola hemorrhagic fever: Tondala, Zaire, 1977–1978. *The Journal of Infectious Diseases* **142**:372–376. doi: [10.1093/infdis/142.3.372](https://doi.org/10.1093/infdis/142.3.372).
- Hijmans RJ**. 2012. Cross-validation of species distribution models: removing spatial sorting bias and calibration with a null model. *Ecology* **93**:679–688. doi: [10.1890/11-0826.1](https://doi.org/10.1890/11-0826.1).
- Hijmans RJ**, Phillips S, Leathwick J, Elith J. 2014. dismo. R package. Accessed: August 2014. Available: <http://cran.r-project.org/web/packages/dismo/dismo.pdf>.
- Huang ZJ**, Tatem AJ. 2013. Global malaria connectivity through air travel. *Malaria Journal* **12**:269. doi: [10.1186/1475-2875-12-269](https://doi.org/10.1186/1475-2875-12-269).
- Huete A**, Didan K, Miura T, Rodriguez EP, Gao X, Ferreira LG. 2002. Overview of the radiometric and biophysical performance of the MODIS vegetation indices. *Remote Sensing of Environment* **83**:195–213. doi: [10.1016/S0034-4257\(02\)00096-2](https://doi.org/10.1016/S0034-4257(02)00096-2).
- Hufnagel L**, Brockmann D, Geisel T. 2004. Forecast and control of epidemics in a globalized world. *Proceedings of the National Academy of Sciences of USA* **101**:15124–15129. doi: [10.1073/pnas.0308344101](https://doi.org/10.1073/pnas.0308344101).
- IATA**. 2014. International Air Transport Association. Accessed: August 2014. Available: <http://www.iata.org/Pages/default.aspx>.
- International Commission**. 1978. Ebola haemorrhagic fever in Zaire, 1976. *Bulletin of the World Health Organization* **56**:271–293.
- Jahrling PB**, Geisbert TW, Dalgard DW, Johnson ED, Ksiazek TG, Hall WC, Peters CJ. 1990. Preliminary report: isolation of Ebola virus from monkeys imported to USA. *Lancet* **335**:502–505. doi: [10.1016/0140-6736\(90\)90737-P](https://doi.org/10.1016/0140-6736(90)90737-P).
- Jones KE**, Patel NG, Levy MA, Storeygard A, Balk D, Gittleman JL, Daszak P. 2008. Global trends in emerging infectious diseases. *Nature* **451**:990–994. doi: [10.1038/Nature06536](https://doi.org/10.1038/Nature06536).
- Kamins AO**, Restif O, Ntiemoa-Baidu Y, Suu-Ire R, Hayman DT, Cunningham AA, Wood JL, Rowcliffe JM. 2011. Uncovering the fruit bat bushmeat commodity chain and the true extent of fruit bat hunting in Ghana, West Africa. *Biological Conservation* **144**:3000–3008. doi: [10.1016/j.biocon.2011.09.003](https://doi.org/10.1016/j.biocon.2011.09.003).
- Karesh WB**, Dobson A, Lloyd-Smith JO, Lubroth J, Dixon MA, Bennett M, Aldrich S, Harrington T, Formenty P, Loh EH, Machalaba CC, Thomas MJ, Heymann DL. 2012. Ecology of zoonoses: natural and unnatural histories. *Lancet* **380**:1936–1945. doi: [10.1016/S0140-6736\(12\)61678-X](https://doi.org/10.1016/S0140-6736(12)61678-X).
- Khan AS**, Tshioko FK, Heymann DL, Le Guenno B, Nabeth P, Kerstiëns B, Flerackers Y, Kilmarx PH, Rodier GR, Nkuku O, Rollin PE, Sanchez A, Zaki SR, Swanepoel R, Tomori O, Nichol ST, Peters CJ, Muyembe-Tamfum JJ, Ksiazek TG. 1999. The reemergence of Ebola hemorrhagic fever, Democratic Republic of the Congo, 1995. *The Journal of Infectious Diseases* **179**:S76–S86. doi: [10.1086/514306](https://doi.org/10.1086/514306).
- King AMQ**, Adams MJ, Carstens EB, Lefkowitz E. 2012. *Virus taxonomy: ninth report of the International Committee on Taxonomy of Viruses*. London: Elsevier. p. 1338.
- Kuhn JH**. 2008. *Filoviruses: a compendium of 40 years of epidemiological, clinical, and laboratory studies*. Vienna: Springer-Verlag. p. 413.
- Kuhn JH**, Becker S, Ebihara H, Geisbert TW, Johnson KM, Kawaoka Y, Lipkin WI, Negredo AI, Netesov SV, Nichol ST, Palacios G, Peters CJ, Tenorio A, Volchkov VE, Jahrling PB. 2010. Proposal for a revised taxonomy of the family *Filoviridae*: classification, names of taxa and viruses, and virus abbreviations. *Archives of Virology* **155**:2083–2103. doi: [10.1007/s00705-010-0814-x](https://doi.org/10.1007/s00705-010-0814-x).
- Lahm SA**, Kombila M, Swanepoel R, Barnes RF. 2007. Morbidity and mortality of wild animals in relation to outbreaks of Ebola haemorrhagic fever in Gabon, 1994–2003. *Transactions of the Royal Society of Tropical Medicine and Hygiene* **101**:64–78. doi: [10.1016/j.trstmh.2006.07.002](https://doi.org/10.1016/j.trstmh.2006.07.002).
- Lamunu M**, Lutwama JJ, Kamugisha J, Opio A, Nambooze J, Ndayimirije N, Okware S. 2004. Containing a haemorrhagic fever epidemic: the Ebola experience in Uganda (October 2000–January 2001). *International Journal of Infectious Diseases* **8**:27–37. doi: [10.1016/j.ijid.2003.04.001](https://doi.org/10.1016/j.ijid.2003.04.001).
- Larkin M**. 2003. Ebola outbreak in the news. *The Lancet Infectious Diseases* **3**:255. doi: [10.1016/S1473-3099\(03\)00584-X](https://doi.org/10.1016/S1473-3099(03)00584-X).
- Le Guenno B**, Formenty P, Wyers M, Gounon P, Walker F, Boesch C. 1995. Isolation and partial characterization of a new strain of Ebola virus. *Lancet* **345**:1271–1274. doi: [10.1016/S0140-6736\(95\)90925-7](https://doi.org/10.1016/S0140-6736(95)90925-7).
- Legrand J**, Grais RF, Boelle PY, Valleron AJ, Flahault A. 2007. Understanding the dynamics of Ebola epidemics. *Epidemiology and Infection* **135**:610–621. doi: [10.1017/S0950268806007217](https://doi.org/10.1017/S0950268806007217).
- Leroy EM**, Baize S, Volchkov VE, Fisher-Hoch SP, Georges-Courbot MC, Lansoud-Soukate J, Capron M, Debré P, McCormick JB, Georges AJ. 2000. Human asymptomatic Ebola infection and strong inflammatory response. *Lancet* **355**:2210–2215. doi: [10.1016/S0140-6736\(00\)02405-3](https://doi.org/10.1016/S0140-6736(00)02405-3).

- Leroy EM**, Epelboin A, Mondonge V, Pourrut X, Gonzalez JP, Muyembe-Tamfum JJ, Formenty P. 2009. Human Ebola outbreak resulting from direct exposure to fruit bats in Luebo, Democratic Republic of Congo, 2007. *Vector Borne and Zoonotic Diseases* **9**:723–728. doi: [10.1089/vbz.2008.0167](https://doi.org/10.1089/vbz.2008.0167).
- Leroy EM**, Kumulungui B, Pourrut X, Rouquet P, Hassanin A, Yaba P, Délicat A, Paweska JT, Gonzalez JP, Swanepoel R. 2005. Fruit bats as reservoirs of Ebola virus. *Nature* **438**:575–576. doi: [10.1038/438575a](https://doi.org/10.1038/438575a).
- Leroy EM**, Souquière S, Rouquet P, Drevet D. 2002. Re-emergence of ebola haemorrhagic fever in Gabon. *Lancet* **359**:712–712. doi: [10.1016/S0140-6736\(02\)07796-6](https://doi.org/10.1016/S0140-6736(02)07796-6).
- Linard C**, Gilbert M, Snow RW, Noor AM, Tatem AJ. 2012. Population distribution, settlement patterns and accessibility across Africa in 2010. *PLOS ONE* **7**:e31743. doi: [10.1371/journal.pone.0031743](https://doi.org/10.1371/journal.pone.0031743).
- Linard C**, Tatem AJ, Gilbert M. 2013. Modelling spatial patterns of urban growth in Africa. *Applied Geography* **44**:23–32. doi: [10.1016/j.apgeog.2013.07.009](https://doi.org/10.1016/j.apgeog.2013.07.009).
- MacNeil A**, Farnon EC, Wamala J, Okware S, Cannon DL, Reed Z, Towner JS, Tappero JW, Lutwama J, Downing R, Nichol ST, Ksiazek TG, Rollin PE. 2010. Proportion of deaths and clinical features in Bundibugyo Ebola virus infection, Uganda. *Emerging Infectious Diseases* **16**:1969–1972. doi: [10.3201/eid1612.100627](https://doi.org/10.3201/eid1612.100627).
- Messina JP**, Brady OJ, Pigott DM, Brownstein JS, Hoen AG, Hay SI. 2014. A global compendium of human dengue virus occurrence. *Scientific Data* **1**:140004. doi: [10.1038/sdata.2014.4](https://doi.org/10.1038/sdata.2014.4).
- Mfunda IM**, Røskaft E. 2010. Bushmeat hunting in Serengeti, Tanzania: an important economic activity to local people. *International Journal of Biodiversity and Conservation* **2**:263–272.
- Milleliri JM**, Tevi-Benissan C, Baize S, Leroy E, Georges-Courbot MC. 2004. [Epidemics of Ebola haemorrhagic fever in Gabon (1994-2002). Epidemiologic aspects and considerations on control measures]. *Bulletin de la Société de Pathologie Exotique* **97**:199–205.
- Miranda ME**, White ME, Dayrit MM, Hayes CG, Ksiazek TG, Burans JP. 1991. Seroepidemiological study of filovirus related to Ebola in the Philippines. *Lancet* **337**:425–426. doi: [10.1016/0140-6736\(91\)91199-5](https://doi.org/10.1016/0140-6736(91)91199-5).
- MSF**. 2014. Ebola epidemic confirmed in Democratic Republic of Congo: MSF sends specialists and material to the epicentre. Accessed: August 2014. Available: <http://www.msf.org/article/ebola-epidemic-confirmed-democratic-republic-congo-msf-sends-specialists-and-material>.
- Murray CJ**, Ortblad KF, Guinovart C, Lim SS, Wolock TM, Roberts DA, Dansereau EA, Graetz N, Barber RM, Brown JC, Wang H, Duber HC, Naghavi M, Dicker D, Dandona L, Salomon JA, Heuton KR, Foreman K, Phillips DE, Fleming TD, Flaxman AD, Phillips BK, Johnson EK, Coggeshall MS, Abd-Allah F, Abera SF, Abraham JP, Abubakar I, Abu-Raddad LJ, Abu-Rmeileh NM, Achoki T, Adeyemo AO, Adou AK, Adsuar JC, Agardh EE, Akena D, Al Khabouri MJ, Alasfoor D, Albittar MI, Alcalá-Cerra G, Alegretti MA, Alemu ZA, Alfonso-Cristancho R, Alhabib S, Ali R, Alla F, Allen PJ, Alsharif U, Alvarez E, Alvis-Guzman N, Amankwaa AA, Amare AT, Amini H, Ammar W, Anderson BO, Antonio CA, Anwari P, Arnlöv J, Arsenijevic VS, Artaman A, Asghar RJ, Assadi R, Atkins LS, Badawi A, Balakrishnan K, Banerjee A, Basu S, Beardsley J, Bekele T, Bell ML, Bernabe E, Beyene TJ, Bhala N, Bhalla A, Bhutta ZA, Abdulhak AB, Binagwaho A, Blore JD, Bose D, Brainin M, Breitborde N, Castañeda-Orjuela CA, Catalá-López F, Chadha VK, Chang JC, Chiang PP, Chuang TW, Colomar M, Cooper LT, Cooper C, Courville KJ, Cowie BC, Criqui MH, Dandona R, Dandona R, Dayama A, De Leo D, Degenhardt L, Del Pozo-Cruz B, Deribe K, Des Jarlais DC, Dessalegn M, Dharmaratne SD, Dilmen U, Ding EL, Driscoll TR, Durrani AM, Ellenbogen RG, Ermakov SP, Esteghamati A, Faraon EJ, Farzadfar F, Fereshtehnejad SM, Fijabi DO, Forouzanfar MH, Fra Paleo U, Gaffikin L, Gamkrelidze A, Gankpé FG, Geleijnse JM, Gessner BD, Gibney KB, Ginawi IA, Glaser EL, Gona P, Goto A, Gouda HN, Gughani HC, Gupta R, Gupta R, Hafezi-Nejad N, Hamadeh RR, Hammami M, Hankey GJ, Harb HL, Haro JM, Havmoeller R, Hay SI, Hedayati MT, Pi IB, Hoek HW, Hornberger JC, Hosgood HD, Hotez PJ, Hoy DG, Huang JJ, Iburg KM, Idrisov BT, Innos K, Jacobsen KH, Jeemon P, Jensen PN, Jha V, Jiang G, Jonas JB, Juel K, Kan H, Kankindi I, Karam NE, Karch A, Karema CK, Kaul A, Kawakami N, Kazi DS, Kemp AH, Kengne AP, Keren A, Kereselidze M, Khader YS, Khalifa SE, Khan EA, Khang YH, Khonelidze I, Kinfu Y, Kinge JM, Knibbs L, Kokubo Y, Kosen S, Defo BK, Kulkarni VS, Kulkarni C, Kumar K, Kumar RB, Kumar GA, Kwan GF, Lai T, Balaji AL, Lam H, Lan Q, Lansingh VC, Larson HJ, Larsson A, Lee JT, Leigh J, Leinsalu M, Leung R, Li Y, Li Y, De Lima GM, Lin HH, Lipshultz SE, Liu S, Liu Y, Lloyd BK, Lotufo PA, Machado VM, Maclachlan JH, Magis-Rodriguez C, Majdan M, Mapoma CC, Marcenés V, Marzan MB, Masci JR, Mashal MT, Mason-Jones AJ, Mayosi BM, Mazorodze TT, McKay AC, Meaney PA, Mehndiratta MM, Mejia-Rodriguez F, Melaku YA, Memish ZA, Mendoza W, Miller TR, Mills EJ, Mohammad KA, Mokdad AH, Mola GL, Monasta L, Montico M, Moore AR, Mori R, Moturi WN, Mukaigawara M, Murthy KS, Naheed A, Naidoo KS, Naldi L, Nangia V, Narayan KM, Nash D, Nejari C, Nelson RG, Neupane SP, Newton CR, Ng M, Nisar MI, Nolte S, Norheim OF, Nowaseb V, Nyakarahuka L, Oh IH, Ohkubo T, Olusanya BO, Omer SB, Opio JN, Orisakwe OE, Pandian JD, Papachristou C, Caicedo AJ, Patten SB, Paul VK, Pavlin BI, Pearce N, Pereira DM, Pervaiz A, Pesudovs K, Petzold M, Pourmalek F, Qato D, Quezada AD, Quistberg DA, Rafay A, Rahimi K, Rahimi-Movaghar V, Rahman SU, Raju M, Rana SM, Razavi H, Reilly RQ, Remuzzi G, Richardus JH, Ronfani L, Roy N, Sabin N, Saeedi MY, Sahraian MA, Samonte GM, Sawhney M, Schneider IJ, Schwebel DC, Seedat S, Sepanlou SG, Servan-Mori EE, Sheikhbahaei S, Shibuya K, Shin HH, Shiue I, Shivakoti R, Sigfusdottir ID, Silberberg DH, Silva AP, Simard EP, Singh JA, Skirbekk V, Sliwa K, Soneji S, Sosnikov SS, Sreeramareddy CT, Stathopoulou VK, Stroupoulis K, Swaminathan S, Sykes BL, Tabb KM, Talongwa RT, Tenkorang EY, Terkawi AS, Thomson AJ, Thorne-Lyman AL, Towbin JA, Traebert J, Tran BX, Dimbuene ZT, Tsilimbaris M, Uchendu US, Ukwaja KN, Valley AJ, Vasankari TJ, Venketasubramanian N, Violante FS, Vlassov VV, Waller S, Wallin MT, Wang L, Wang SX, Wang Y, Weichenthal S, Weiderpass E, Weintraub RG, Westerman R, White RA, Wilkinson JD, Williams TN, Woldeyohannes SM, Wong JQ, Xu G, Yang YC, Yano Y, Yip P, Yonemoto N, Yoon SJ, Younis M, Yu C, Jin KY, El Sayed Zaki M, Zhao Y, Zheng Y, Zhou M, Zhu J, Zou XN, Lopez AD, Vos T. 2014. Global, regional, and national incidence and mortality for HIV, tuberculosis, and malaria during 1990-2013: a systematic analysis for the Global Burden of Disease Study 2013. *Lancet*. doi: [10.1016/S0140-6736\(14\)60844-8](https://doi.org/10.1016/S0140-6736(14)60844-8).

- Murray CJL**, Vos T, Lozano R, Naghavi M, Flaxman AD, Michaud C, Ezzati M, Shibuya K, Salomon JA, Abdalla S, Aboyans V, Abraham J, Ackerman I, Aggarwal R, Ahn SY, Ali MK, Alvarado M, Anderson HR, Anderson LM, Andrews KG, Atkinson C, Baddour LM, Bahalim AN, Barker-Collo S, Barrero LH, Bartels DH, Basáñez MG, Baxter A, Bell ML, Benjamin EJ, Bennett D, Bernabé E, Bhalla K, Bhandari B, Bikbov B, Bin Abdulhak A, Birbeck G, Black JA, Blencowe H, Blore JD, Blyth F, Bolliger I, Bonaventure A, Boufous S, Bourne R, Boussinesq M, Braithwaite T, Brayne C, Bridgett L, Brooker S, Brooks P, Brugha TS, Bryan-Hancock C, Bucello C, Buchbinder R, Buckle G, Budke CM, Burch M, Burney P, Burstein R, Calabria B, Campbell B, Canter CE, Carabin H, Carapetis J, Carmona L, Cella C, Charlson F, Chen H, Cheng AT, Chou D, Chugh SS, Coffeng LE, Colan SD, Colquhoun S, Colson KE, Condon J, Connor MD, Cooper LT, Corriere M, Cortinovis M, de Vaccaro KC, Couser W, Cowie BC, Criqui MH, Cross M, Dabhadkar KC, Dahiya M, Dahodwala N, Damsere-Derry J, Danaei G, Davis A, De Leo D, Degenhardt L, Dellavalle R, Delossantos A, Denenberg J, Derrett S, Des Jarlais DC, Dharmaratne SD, Dherani M, Diaz-Torne C, Dolk H, Dorsey ER, Driscoll T, Duber H, Ebel B, Edmond K, Elbaz A, Ali SE, Erskine H, Erwin PJ, Espindola P, Ewoigbokhan SE, Farzadfar F, Feigin V, Felson DT, Ferrari A, Ferri CP, Fèvre EM, Finucane MM, Flaxman S, Flood L, Foreman K, Forouzanfar MH, Fowkes FG, Fransen M, Freeman MK, Gabbe BJ, Gabriel SE, Gakidou E, Ganatra HA, Garcia B, Gaspari F, Gillum RF, Gmel G, Gonzalez-Medina D, Gosselin R, Grainger R, Grant B, Groeger J, Guillemin F, Gunnell D, Gupta R, Haagsma J, Hagan H, Halasa YA, Hall W, Haring D, Haro JM, Harrison JE, Havmoeller R, Hay RJ, Higashi H, Hill C, Hoen B, Hoffman H, Hotez PJ, Hoy D, Huang JJ, Ibeanusi SE, Jacobsen KH, James SL, Jarvis D, Jasrasaria R, Jayaraman S, Johns N, Jonas JB, Karthikeyan G, Kassebaum N, Kawakami N, Keren A, Khoo JP, King CH, Knowlton LM, Kobusingye O, Koranteng A, Krishnamurthi R, Laden F, Lalloo R, Laslett LL, Lathlean T, Leasher JL, Lee YY, Leigh J, Levinson D, Lim SS, Limb E, Lin JK, Lipnick M, Lipshultz SE, Liu W, Loane M, Ohno SL, Lyons R, Mabweijano J, MacIntyre MF, Malekzadeh R, Mallinger L, Manivannan S, Marcenes W, March L, Margolis DJ, Marks GB, Marks R, Matsumori A, Matzopoulos R, Mayosi BM, McAnulty JH, McDermott MM, McGill N, McGrath J, Medina-Mora ME, Meltzer M, Mensah GA, Merriman TR, Meyer AC, Miglioli V, Miller M, Miller TR, Mitchell PB, Mock R, Mocumbi AO, Moffitt TE, Mokdad AA, Monasta L, Montico M, Moradi-Lakeh M, Moran A, Morawska L, Mori R, Murdoch ME, Mwanikii MK, Naidoo K, Nair MN, Naldi L, Narayan KM, Nelson PK, Nelson RG, Nevitt MC, Newton CR, Nolte S, Norman P, Norman R, O'Donnell M, O'Hanlon S, Olives C, Omer SB, Ortblad K, Osborne R, Ozgediz D, Page A, Pahari B, Pandian JD, Rivero AP, Patten SB, Pearce N, Padilla RP, Perez-Ruiz F, Perico N, Pesudovs K, Phillips D, Phillips MR, Pierce K, Pion S, Polanczyk GV, Polinder S, Pope CA III, Popova S, Porrini E, Pourmalek F, Prince M, Pullan RL, Ramaiah KD, Ranganathan D, Razavi H, Regan M, Rehm JT, Rein DB, Remuzzi G, Richardson K, Rivara FP, Roberts T, Robinson C, De León FR, Ronfani L, Room R, Rosenfeld LC, Rushton L, Sacco RL, Saha S, Sampson U, Sanchez-Riera L, Sanman E, Schwebel DC, Scott JG, Segui-Gomez M, Shahraz S, Shepard DS, Shin H, Shivakoti R, Singh D, Singh GM, Singh JA, Singleton J, Sleet DA, Sliwa K, Smith E, Smith JL, Stapelberg NJ, Steer A, Steiner T, Stolk WA, Stovner LJ, Sudfeld C, Syed S, Tamburlini G, Tavakkoli M, Taylor HR, Taylor JA, Taylor WJ, Thomas B, Thomson WM, Thurston GD, Tleyjeh IM, Tonelli M, Towbin JA, Truelsén T, Tsilimbaris MK, Ubeda C, Undurraga EA, van der Werf MJ, van Os J, Vavilala MS, Venketasubramanian N, Wang M, Wang W, Watt K, Weatherall DJ, Weinstock MA, Weintraub R, Weisskopf MG, Weissman MM, White RA, Whiteford H, Wiebe N, Wiersma ST, Wilkinson JD, Williams HC, Williams SR, Witt E, Wolfe F, Woolf AD, Wulf S, Yeh PH, Zaidi AK, Zheng ZJ, Zonies D, Lopez AD, AlMazroa MA, Memish ZA. 2012. Disability-adjusted life years (DALYs) for 291 diseases and injuries in 21 regions, 1990-2010: a systematic analysis for the Global Burden of Disease Study 2010. *Lancet* **380**: 2197-2223. doi: [10.1016/S0140-6736\(12\)61689-4](https://doi.org/10.1016/S0140-6736(12)61689-4).
- Muyembe T**, Kipasa M. 1995. Ebola haemorrhagic fever in Kikwit, Zaire. International Scientific and Technical Committee and WHO Collaborating Centre for Haemorrhagic Fevers. *Lancet* **345**:1448. doi: [10.1016/S0140-6736\(95\)92640-2](https://doi.org/10.1016/S0140-6736(95)92640-2).
- NCBI**. 2014. GenBank - ebola. Accessed: August 2014. Available: <http://www.ncbi.nlm.nih.gov/genbank/>.
- Negredo A**, Palacios G, Vazquez-Moron S, Gonzalez F, Dopazo H, Molero F, Juste J, Quetglas J, Savji N, de la Cruz Martínez M, Herrera JE, Pizarro M, Hutchison SK, Echevarría JE, Lipkin WI, Tenorio A. 2011. Discovery of an ebolavirus-like filovirus in Europe. *PLOS Pathogens* **7**:e1002304. doi: [10.1371/journal.ppat.1002304](https://doi.org/10.1371/journal.ppat.1002304).
- NIH**. 2014. NIAID emerging infectious diseases/pathogens. Available: August 2014.
- Nkoghe D**, Formenty P, Leroy EM, Nnegue S, Edou SY, Ba JI, Allaranger Y, Cabore J, Bachy C, Andraghetti R, de Benoist AC, Galanis E, Rose A, Bausch D, Reynolds M, Rollin P, Choueibou C, Shongo R, Gergonne B, Koné LM, Yada A, Roth C, Mve MT. 2005. [Multiple Ebola virus haemorrhagic fever outbreaks in Gabon, from October 2001 to April 2002]. *Bulletin de la Société de Pathologie Exotique* **98**:224-229.
- Nkoghe D**, Kone ML, Yada A, Leroy E. 2011. A limited outbreak of Ebola haemorrhagic fever in Etoumbi, Republic of Congo, 2005. *Transactions of the Royal Society of Tropical Medicine and Hygiene* **105**:466-472. doi: [10.1016/j.trstmh.2011.04.011](https://doi.org/10.1016/j.trstmh.2011.04.011).
- Okware SI**, Omaswa FG, Zaramba S, Opio A, Lutwama JJ, Kamugisha J, Rwaguma EB, Kagwa P, Lamunu M. 2002. An outbreak of Ebola in Uganda. *Tropical Medicine & International Health* **7**:1068-1075. doi: [10.1046/j.1365-3156.2002.00944.x](https://doi.org/10.1046/j.1365-3156.2002.00944.x).
- Olival KJ**, Hayman DT. 2014. Filoviruses in bats: current knowledge and future directions. *Viruses* **6**:1759-1788. doi: [10.3390/V6041759](https://doi.org/10.3390/V6041759).
- Onyango CO**, Opoka ML, Ksiazek TG, Formenty P, Ahmed A, Tukei PM, Sang RC, Ofula VO, Konongoi SL, Coldren RL, Grein T, Legros D, Bell M, De Cock KM, Bellini WJ, Towner JS, Nichol ST, Rollin PE. 2007. Laboratory diagnosis of Ebola hemorrhagic fever during an outbreak in Yambio, Sudan, 2004. *The Journal of Infectious Diseases* **196**:S193-S198. doi: [10.1086/520609](https://doi.org/10.1086/520609).
- ORNL DAAC**. 2000. Shuttle radar topography mission near-global digital elevation models. Accessed: August 2014. Available: [http://webmap.ornl.gov/wcsdown/wcsdown.jsp?dg\\_id=10008\\_1](http://webmap.ornl.gov/wcsdown/wcsdown.jsp?dg_id=10008_1).

- Pattyn S**, Jacob W, Vandergroen G, Piot P, Courteille G. 1977. Isolation of Marburg-like virus from a case of hemorrhagic fever in Zaire. *Lancet* **1**:573–574. doi: [10.1016/S0140-6736\(77\)92002-5](https://doi.org/10.1016/S0140-6736(77)92002-5).
- Peterson AT**, Bauer JT, Mills JN. 2004a. Ecologic and geographic distribution of filovirus disease. *Emerging Infectious Diseases* **10**:40–47. doi: [10.3201/eid1001.030125](https://doi.org/10.3201/eid1001.030125).
- Peterson AT**, Carroll DS, Mills JN, Johnson KM. 2004b. Potential mammalian filovirus reservoirs. *Emerging Infectious Diseases* **10**:2073–2081. doi: [10.3201/eid1012.040346](https://doi.org/10.3201/eid1012.040346).
- Peterson AT**, Papes M, Carroll DS, Leirs H, Johnson KM. 2007. Mammal taxa constituting potential coevolved reservoirs of filoviruses. *Journal of Mammalogy* **88**:1544–1554. doi: [10.1644/06-Mamm-a-280r1.1](https://doi.org/10.1644/06-Mamm-a-280r1.1).
- Petter JJ**, Desbordes F. 2013. *Primates of the world*. Princeton: Princeton University Press. p. 186.
- Phillips SJ**, Dudik M, Elith J, Graham CH, Lehmann A, Leathwick J, Ferrier S. 2009. Sample selection bias and presence-only distribution models: implications for background and pseudo-absence data. *Ecological Applications* **19**:181–197. doi: [10.1890/07-2153.1](https://doi.org/10.1890/07-2153.1).
- Piggott DM**, Bhatt S, Golding N, Duda KA, Battle KE, Brady OJ, Messina JP, Balard Y, Bastien P, Pratloug F, Brownstein JS, Freifeld C, Mekaru SR, Gething PW, George DB, Myers MF, Reithinger R, Hay SI. 2014. Global distribution maps of the leishmaniasis. *eLife* e02851. doi: [10.7554/eLife.02851](https://doi.org/10.7554/eLife.02851).
- Pindolia DK**, Garcia AJ, Huang ZJ, Fik T, Smith DL, Tatem AJ. 2014. Quantifying cross-border movements and migrations for guiding the strategic planning of malaria control and elimination. *Malaria Journal* **13**:169. doi: [10.1186/1475-2875-13-169](https://doi.org/10.1186/1475-2875-13-169).
- Pourrut X**, Delicat A, Rollin PE, Ksiazek TG, Gonzalez JP, Leroy EM. 2007. Spatial and temporal patterns of Zaire ebolavirus antibody prevalence in the possible reservoir bat species. *The Journal of Infectious Diseases* **196**:S176–S183. doi: [10.1086/520541](https://doi.org/10.1086/520541).
- Pourrut X**, Kumulungui B, Wittmann T, Moussavou G, Délicat A, Yaba P, Nkoghe D, Gonzalez JP, Leroy EM. 2005. The natural history of Ebola virus in Africa. *Microbes and Infection* **7**:1005–1014. doi: [10.1016/j.micinf.2005.04.006](https://doi.org/10.1016/j.micinf.2005.04.006).
- Pourrut X**, Souris M, Towner JS, Rollin PE, Nichol ST, Gonzalez JP, Leroy E. 2009. Large serological survey showing cocirculation of Ebola and Marburg viruses in Gabonese bat populations, and a high seroprevalence of both viruses in *Rousettus aegyptiacus*. *BMC Infectious Diseases* **9**:e159. doi: [10.1186/1471-2334-9-159](https://doi.org/10.1186/1471-2334-9-159).
- Rouquet P**, Froment JM, Bermejo M, Kilbourn A, Karesh W, Reed P, Kumulungui B, Yaba P, Délicat A, Rollin PE, Leroy EM. 2005. Wild animal mortality monitoring and human Ebola outbreaks, Gabon and Republic of Congo, 2001–2003. *Emerging Infectious Diseases* **11**:283–290. doi: [10.3201/eid1102.040533](https://doi.org/10.3201/eid1102.040533).
- Schipper J**, Chanson JS, Chiozza F, Cox NA, Hoffmann M, Katariya V, Lamoreux J, Rodrigues AS, Stuart SN, Temple HJ, Baillie J, Boitani L, Lacher TE Jr, Mittermeier RA, Smith AT, Absolon D, Aguiar JM, Amori G, Bakkour N, Baldi R, Berridge RJ, Bielby J, Black PA, Blanc JJ, Brooks TM, Burton JA, Butynski TM, Catullo G, Chapman R, Cokeliss Z, Collen B, Conroy J, Cooke JG, da Fonseca GA, Derocher AE, Dublin HT, Duckworth JW, Emmons L, Emslie RH, Festa-Bianchet M, Foster M, Foster S, Garshelis DL, Gates C, Gimenez-Dixon M, Gonzalez S, Gonzalez-Maya JF, Good TC, Hammerson G, Hammond PS, Happold D, Happold M, Hare J, Harris RB, Hawkins CE, Haywood M, Heaney LR, Hedges S, Helgen KM, Hilton-Taylor C, Hussain SA, Ishii N, Jefferson TA, Jenkins RK, Johnston CH, Keith M, Kingdon J, Knox DH, Kovacs KM, Langhammer P, Leus K, Lewison R, Lichtenstein G, Lowry LF, Macavoy Z, Mace GM, Mallon DP, Masi M, McKnight MW, Medellín RA, Medici P, Mills G, Moehlman PD, Molur S, Mora A, Nowell K, Oates JF, Olech W, Oliver WR, Oprea M, Patterson BD, Perrin WF, Polidoro BA, Pollock C, Powel A, Protas Y, Racey P, Ragle J, Ramani P, Rathbun G, Reeves RR, Reilly SB, Reynolds JE III, Rondinini C, Rosell-Ambal RG, Rulli M, Rylands AB, Savini S, Schank CJ, Sechrest W, Self-Sullivan C, Shoemaker A, Sillero-Zubiri C, De Silva N, Smith DE, Srinivasulu C, Stephenson PJ, van Strien N, Talukdar BK, Taylor BL, Timmins R, Tirira DG, Tognelli MF, Tsytsulina K, Veiga LM, Vié JC, Williamson EA, Wyatt SA, Xie Y, Young BE. 2008. The status of the world's land and marine mammals: diversity, threat, and knowledge. *Science* **322**:225–230. doi: [10.1126/science.1165115](https://doi.org/10.1126/science.1165115).
- Seto KC**, Guneralp B, Hutyra LR. 2012. Global forecasts of urban expansion to 2030 and direct impacts on biodiversity and carbon pools. *Proceedings of the National Academy of Sciences of USA* **109**:16083–16088. doi: [10.1073/pnas.1211658109](https://doi.org/10.1073/pnas.1211658109).
- Shoemaker T**, MacNeil A, Balinandi S, Campbell S, Wamala JF, McMullan LK, Downing R, Lutwama J, Mbidde E, Ströher U, Rollin PE, Nichol ST. 2012. Reemerging Sudan ebola virus disease in Uganda, 2011. *Emerging Infectious Diseases* **18**:1480–1483. doi: [10.3201/eid1809.111536](https://doi.org/10.3201/eid1809.111536).
- Siegert R**, Shu H-L, Slenczka W, Peters D, Mueller G. 1967. Zur Ätiologie einer unbekanntenen, von Affen ausgegangenen menschlichen Infektionskrankheit. *Deutsche Medizinische Wochenschrift* **92**:2341–2343. doi: [10.1055/s-0028-1106144](https://doi.org/10.1055/s-0028-1106144).
- Simini F**, Gonzalez MC, Maritan A, Barabasi AL. 2012. A universal model for mobility and migration patterns. *Nature* **484**:96–100. doi: [10.1038/nature10856](https://doi.org/10.1038/nature10856).
- Simini F**, Maritan A, Neda Z. 2013. Human mobility in a continuum approach. *PLOS ONE* **8**:e60069. doi: [10.1371/journal.pone.0060069](https://doi.org/10.1371/journal.pone.0060069).
- Sinka ME**, Bangs MJ, Manguin S, Rubio-Palis Y, Chareonviriyaphap T, Coetzee M, Mbogo CM, Hemingway J, Patil AP, Temperley WH, Gething PW, Kabaria CW, Burkot TR, Harbach RE, Hay SI. 2012. A global map of dominant malaria vectors. *Parasites & Vectors* **5**:69. doi: [10.1186/1756-3305-5-69](https://doi.org/10.1186/1756-3305-5-69).
- Smith DH**, Isaacson M, Johnson KM, Bagshawe A, Johnson BK, Swanapoel R, Killey M, Siongok T, Keruga WK. 1982. Marburg virus disease in Kenya. *Lancet* **1**:816–820. doi: [10.1016/S0140-6736\(82\)91871-2](https://doi.org/10.1016/S0140-6736(82)91871-2).
- Stockwell D**, Peters D. 1999. The GARP modelling system: problems and solutions to automated spatial prediction. *International Journal of Geographical Information Science* **13**:143–158. doi: [10.1080/136588199241391](https://doi.org/10.1080/136588199241391).
- Stoddard ST**, Morrison AC, Vazquez-Prokopec GM, Soldan VP, Kochel TJ, Kitron U, Elder JP, Scott TW. 2009. The role of human movement in the transmission of vector-borne pathogens. *PLOS Neglected Tropical Diseases* **3**:e481. doi: [10.1371/journal.pntd.0000481](https://doi.org/10.1371/journal.pntd.0000481).

- Talbi C**, Lemey P, Suchard MA, Abdelatif E, Elharrak M, Nourilil J, Faouzi A, Echevarría JE, Vazquez Morón S, Rambaut A, Campiz N, Tatem AJ, Holmes EC, Bourhy H. 2010. Phylodynamics and human-mediated dispersal of a zoonotic virus. *PLOS Pathogens* **6**:e1001166. doi: [10.1371/journal.ppat.1001166](https://doi.org/10.1371/journal.ppat.1001166).
- Tatem AJ**, Goetz SJ, Hay SI. 2004. Terra and aqua: new data for epidemiology and public health. *International Journal of Applied Earth Observation and Geoinformation* **6**:33–46. doi: [10.1016/j.jag.2004.07.001](https://doi.org/10.1016/j.jag.2004.07.001).
- Tignor GH**, Casals J, Shope RE. 1993. The Yellow Fever epidemic in Ethiopia, 1961-1962-retrospective serological evidence for concomitant Ebola or Ebola-like virus infection. *Transactions of the Royal Society of Tropical Medicine and Hygiene* **87**:162–162. doi: [10.1016/0035-9203\(93\)90471-2](https://doi.org/10.1016/0035-9203(93)90471-2).
- Towner JS**, Amman BR, Sealy TK, Carroll SAR, Comer JA, Kemp A, Swanepoel R, Paddock CD, Balinandi S, Khristova ML, Formenty PB, Albarino CG, Miller DM, Reed ZD, Kayiwa JT, Mills JN, Cannon DL, Greer PW, Byaruhanga E, Farnon EC, Atimnedi P, Okware S, Katongole-Mbidde E, Downing R, Tappero JW, Zaki SR, Ksiazek TG, Nichol ST, Rollin PE. 2009. Isolation of genetically diverse Marburg viruses from Egyptian fruit bats. *PLOS Pathogens* **5**:e1000536. doi: [10.1371/journal.ppat.1000536](https://doi.org/10.1371/journal.ppat.1000536).
- Towner JS**, Khristova ML, Sealy TK, Vincent MJ, Erickson BR, Bawiec DA, Hartman AL, Comer JA, Zaki SR, Ströher U, Gomes da Silva F, del Castillo F, Rollin PE, Ksiazek TG, Nichol ST. 2006. Marburgvirus genomics and association with a large hemorrhagic fever outbreak in Angola. *Journal of Virology* **80**: 6497–6516. doi: [10.1128/JVI.00069-06](https://doi.org/10.1128/JVI.00069-06).
- Towner JS**, Sealy TK, Khristova ML, Albarino CG, Conlan S, Reeder SA, Quan PL, Lipkin WI, Downing R, Tappero JW, Okware S, Lutwama J, Bakamutumaho B, Kayiwa J, Comer JA, Rollin PE, Ksiazek TG, Nichol ST. 2008. Newly discovered Ebola virus associated with hemorrhagic fever outbreak in Uganda. *PLOS Pathogens* **4**:e1000212. doi: [10.1371/journal.ppat.1000212](https://doi.org/10.1371/journal.ppat.1000212).
- Trabucco A**, Zomer RJ. 2009. Global Aridity Index (Global-Aridity) and global potential Evapo-Transpiration (Global-PET) Geospatial database. Accessed: August 2014. Available: <http://www.csi.cgiar.org>.
- Walsh PD**, Bermejo M, Rodriguez-Teijeiro JD. 2009. Disease avoidance and the evolution of primate social connectivity: Ebola, bats, gorillas, and chimpanzees. In: Huffman MA, Chapman CA, editors. *Primate parasite ecology: the dynamics and study of host-parasite relationships*. Cambridge: Cambridge University Press. p. 183–197.
- Wamala JF**, Lukwago L, Malimbo M, Nguku P, Yoti Z, Musenero M, Amone J, Mbabazi W, Nanyunja M, Zamba S, Opio A, Lutwama JJ, Talisuna AO, Okware SI. 2010. Ebola hemorrhagic fever associated with novel virus strain, Uganda, 2007-2008. *Emerging Infectious Diseases* **16**:1087–1092. doi: [10.3201/eid1607.091525](https://doi.org/10.3201/eid1607.091525).
- Wan ZM**, Li ZL. 1997. A physics-based algorithm for retrieving land-surface emissivity and temperature from EOS/MODIS data. *IEEE Transactions on Geoscience and Remote Sensing* **35**:980–996. doi: [10.1109/36.602541](https://doi.org/10.1109/36.602541).
- Wang H**, Liddell CA, Coates MM, Mooney MD, Levitz CE, Schumacher AE, Apfel H, Iannarone M, Phillips B, Lofgren KT, Sandar L, Dorrington RE, Rakovac I, Jacobs TA, Liang X, Zhou M, Zhu J, Yang G, Wang Y, Liu S, Li Y, Ozgoren AA, Abera SF, Abubakar I, Achoki T, Adelekan A, Ademi Z, Alemu ZA, Allen PJ, Almazroa MA, Alvarez E, Amankwaa AA, Amare AT, Ammar W, Anwari P, Cunningham SA, Asad MM, Assadi R, Banerjee A, Basu S, Bedi N, Bekele T, Bell ML, Bhutta Z, Blore J, Basara BB, Boufous S, Breitborde N, Bruce NG, Bui LN, Carapetis JR, Cárdenas R, Carpenter DO, Caso V, Castro RE, Catalá-Lopéz F, Cavlin A, Che X, Chiang PP, Chowdhury R, Christophi CA, Chuang TW, Cirillo M, da Costa Leite I, Courville KJ, Dandona L, Dandona R, Davis A, Dayama A, Deribe K, Dharmaratne SD, Dherani MK, Dilmen U, Ding EL, Edmond KM, Ermakov SP, Farzadfar F, Fereshtehnejad SM, Fijabi DO, Foigt N, Forouzanfar MH, Garcia AC, Geleijnse JM, Gessner BD, Goginashvili K, Gona P, Goto A, Gouda HN, Green MA, Greenwell KF, Gughani HC, Gupta R, Hamadeh RR, Hammami M, Harb HL, Hay S, Hedayati MT, Hosgood HD, Hoy DG, Idrisov BT, Islami F, Ismayilova S, Jha V, Jiang G, Jonas JB, Juel K, Kabagambe EK, Kazi DS, Kengne AP, Kereselidze M, Khader YS, Khalifa SE, Khang YH, Kim D, Kinfa Y, Kinge JM, Kokubo Y, Kosen S, Defo BK, Kumar GA, Kumar K, Kumar RB, Lai T, Lan Q, Larsson A, Lee JT, Leinsalu M, Lim SS, Lipshultz SE, Logroscino G, Lotufo PA, Lunevicius R, Lyons RA, Ma S, Mahdi AA, Marzan MB, Mashal MT, Mazorodze TT, McGrath JJ, Memish ZA, Mendoza W, Mensah GA, Meretoja A, Miller TR, Mills EJ, Mohammad KA, Mokdad AH, Monasta L, Montico M, Moore AR, Moschandreas J, Msemburi WT, Mueller UO, Muszynska MM, Naghavi M, Naidoo KS, Narayan KV, Nejjari C, Ng M, de Dieu Ngirabega J, Nieuwenhuijsen MJ, Nyakarahuka L, Ohkubo T, Omer SB, Caicedo AJ, Wyk VP, Pope D, Prabhakaran D, Rahman SU, Rana SM, Reilly RQ, Rojas-Rueda D, Ronfani L, Rushton L, Saeedi MY, Salomon J, Sampson U, Santos IS, Sawhney M, Schmidt JC, Shakh-Nazarova M, She J, Sheikhbahaei S, Shibuya K, Shin HH, Shishani K, Shiuie I, Sigfusdottir ID, Singh JA, Skirbekk V, Sliwa K, Soshnikov SS, Sposato LA, Stathopoulou VK, Stroumpoulis K, Tabb KM, Talongwa RT, Teixeira CM, Terkawi AS, Thomson AJ, Thorne-Lyman AL, Toyoshima H, Dimbuene ZT, Uwaliraye P, Uzun SB, Vasankari TJ, Vasconcelos AM, Vlassov VV, Vollset SE, Vos T, Waller S, Wan X, Weichenthal S, Weiderpass E, Weintraub RG, Westerman R, Wilkinson JD, Williams HC, Yang YC, Yentur GK, Yip P, Yonemoto N, Younis M, Yu C, Jin KY, El Sayed Zaki M, Zhu S, Lopez AD, Murray CJ. 2014. Global, regional, and national levels of neonatal, infant, and under-5 mortality during 1990-2013: a systematic analysis for the Global Burden of Disease Study 2013. *Lancet*:doi: [10.1016/S0140-6736\(14\)60497-9](https://doi.org/10.1016/S0140-6736(14)60497-9).
- Weiss DJ**, Atkinson PM, Bhatt S, Mappin B, Hay SI, Gething PW. 2014a. An effective approach for gap-filling continental scale remotely sensed time-series. *ISPRS Journal of Photogrammetry and Remote Sensing* accepted manuscript.
- Weiss DJ**, Bhatt S, Mappin B, Van Boeckel TP, Smith DL, Hay SI, Gething PW. 2014b. Air temperature suitability for Plasmodium falciparum malaria transmission in Africa 2000-2012: a high-resolution spatiotemporal prediction. *Malaria Journal* **13**:171. doi: [10.1186/1475-2875-13-171](https://doi.org/10.1186/1475-2875-13-171).
- Wenger SJ**, Olden JD. 2012. Assessing transferability of ecological models: an underappreciated aspect of statistical validation. *Methods in Ecology and Evolution* **3**:260–267. doi: [10.1111/j.2041-210X.2011.00170.x](https://doi.org/10.1111/j.2041-210X.2011.00170.x).

- Wesolowski A**, Buckee CO, Pindolia DK, Eagle N, Smith DL, Garcia AJ, Tatem AJ. 2013. The use of census migration data to approximate human movement patterns across temporal scales. *PLOS ONE* **8**:e52971. doi: [10.1371/journal.pone.0052971](https://doi.org/10.1371/journal.pone.0052971).
- Wesolowski A**, Eagle N, Tatem AJ, Smith DL, Noor AM, Snow RW, Buckee CO. 2012. Quantifying the impact of human mobility on malaria. *Science* **338**:267–270. doi: [10.1126/science.1223467](https://doi.org/10.1126/science.1223467).
- WHO**. 2001. Outbreak of Ebola haemorrhagic fever, Uganda, August 2000-January 2001. *Weekly Epidemiological Record* **76**:41–46.
- WHO**. 2003a. Outbreak(s) of Ebola haemorrhagic fever, Congo and Gabon, October 2001-July 2002. *Weekly Epidemiological Record* **78**:223–228.
- WHO**. 2003b. Outbreak(s) of Ebola haemorrhagic fever in the Republic of the Congo, January-April 2003. *Weekly Epidemiological Record* **78**:285–289.
- WHO**. 2005. Outbreak of Ebola haemorrhagic fever in Yambio, south Sudan, April - June 2004. *Weekly Epidemiological Record* **80**:370–375.
- WHO**. 2012a. Ebola in Uganda - 29 July 2012. Accessed: August 2014. Available: [http://www.who.int/csr/don/2012\\_07\\_29/en/](http://www.who.int/csr/don/2012_07_29/en/).
- WHO**. 2012b. Ebola outbreak in democratic Republic of Congo - 17 August 2012. Accessed: August 2014. Available: [http://www.who.int/csr/don/2012\\_08\\_18/en/](http://www.who.int/csr/don/2012_08_18/en/).
- WHO**. 2012c. Ebola in Uganda - 17 November 2012. Accessed: August 2014. Available: [http://www.who.int/csr/don/2012\\_11\\_17/en/](http://www.who.int/csr/don/2012_11_17/en/).
- WHO**. 2014a. Ebola virus disease update - west Africa. Accessed: August 2014. Available: [http://www.who.int/csr/don/2014\\_08\\_15Ebola/en/](http://www.who.int/csr/don/2014_08_15Ebola/en/).
- WHO**. 2014b. Health statistics and information systems - definition of region groupings. Accessed: August 2014. Available: [http://www.who.int/healthinfo/global\\_burden\\_disease/definition\\_regions/en/](http://www.who.int/healthinfo/global_burden_disease/definition_regions/en/).
- WHO**. 2014c. *Interim manual - Ebola and Marburg virus disease epidemics: preparedness, alert, control, and evaluation*. Geneva: World Health Organization. P. 123.
- WHO**. 2014d. WHO statement on the meeting of the International Health Regulations Emergency Committee regarding the 2014 Ebola outbreak in West Africa. Accessed: August 2014. Available: <http://www.who.int/mediacentre/news/statements/2014/ebola-20140808/en/>.
- WHO International Study Team**. 1978. Ebola haemorrhagic fever in Sudan, 1976. *Bulletin of the World Health Organization* **56**:247–270.
- Wittmann TJ**, Biek R, Hassanin A, Rouquet P, Reed P, Yaba P, Pourrut X, Real LA, Gonzalez JP, Leroy EM. 2007. Isolates of Zaire ebolavirus from wild apes reveal genetic lineage and recombinants. *Proceedings of the National Academy of Sciences of USA* **104**:17123–17127. doi: [10.1073/pnas.0704076104](https://doi.org/10.1073/pnas.0704076104).
- Wolfe ND**, Daszak P, Kilpatrick AM, Burke DS. 2005. Bushmeat Hunting, deforestation, and prediction of zoonotic disease emergence. *Emerging Infectious Diseases* **11**:1822–1827. doi: [10.3201/eid1112.040789](https://doi.org/10.3201/eid1112.040789).
- Wolfe ND**, Dunavan CP, Diamond J. 2007. Origins of major human infectious diseases. *Nature* **447**:279–283. doi: [10.1038/Nature05775](https://doi.org/10.1038/Nature05775).
- World Bank**. 2014. World Bank open dataset. Accessed: July 2014. Available: <http://data.worldbank.org/>.
- WorldPop**. 2014. WorldPop project. Accessed: August 2014. Available: <http://www.worldpop.org.uk/>.
- WWF**. 2014. List of terrestrial ecoregions. Accessed: August 2014. Available: [http://wwf.panda.org/about\\_our\\_earth/ecoregions/ecoregion\\_list/](http://wwf.panda.org/about_our_earth/ecoregions/ecoregion_list/).
- Yang Y**, Atkinson P, Ettema D. 2008. Individual space-time activity-based modelling of infectious disease transmission within a city. *Journal of the Royal Society, Interface* **5**:759–772. doi: [10.1098/rsif.2007.1218](https://doi.org/10.1098/rsif.2007.1218).
- Zipf GK**. 1946. The P<sub>1</sub> P<sub>2</sub>/D hypothesis: on the intercity movement of persons. *American Sociological Review* **11**:677–686. doi: [10.2307/2087063](https://doi.org/10.2307/2087063).