

 Open access • Journal Article • DOI:10.1111/IMCB.12041

Maternal obesity alters uterine NK activity through a functional KIR2DL1/S1 imbalance.

— [Source link](#) 

[Barbara Castellana](#), [Sofie Perdu](#), [Yoona Kim](#), [Kathy Chan](#) ...+3 more authors

Institutions: [University of British Columbia](#)

Published on: 13 Mar 2018 - [Immunology and Cell Biology](#) (Immunol Cell Biol)

Topics: [Blood vessel remodeling](#)

Related papers:

- [Maternal obesity alters uterine NK cell activity through a functional KIR2DL1/S1 imbalance](#)
- [Maternal obesity drives functional alterations in uterine NK cells](#)
- [Part F: Functional Duality of Mouse Uterine Natural Killer Cell in Pregnancy](#)
- [Obesogenic diet exposure alters uterine natural killer cell biology and impairs vasculature remodeling in mice](#)
- [Uterine natural killer cells: their choices, their missions](#)

Share this paper:    

View more about this paper here: <https://typeset.io/papers/maternal-obesity-altern-uterine-nk-activity-through-a-4sko2f6voa>

Castellana *et al*

1 **Maternal obesity alters uterine NK cell activity through a functional KIR2DL1/S1 imbalance**

2
3
4 Barbara Castellana^{1,2}, Sofie Perdu^{1,2}, Yoona Kim¹, Kathy Chan¹, Jawairia Atif¹, Megan Marziali¹,
5 Alexander G. Beristain^{1,2}
6
7
8
9

10
11
12
13 ¹ British Columbia Children's Hospital Research Institute, Vancouver, Canada.

14 ² Department of Obstetrics & Gynecology, The University of British Columbia, Vancouver, Canada.
15
16
17
18
19
20
21
22

23 **Running Title:** Maternal obesity drives uNK KIR-related imbalances
24
25
26
27
28
29
30
31
32
33
34

35 To whom correspondence should be addressed: Alexander G. Beristain, British Columbia Children's
36 Hospital Research Institute, Department of Obstetrics & Gynecology, The University of British
37 Columbia, Vancouver, British Columbia, Canada. V5Z 4H4. Tel: (604) 875-3573; E-mail:
38 aberista@mail.ubc.ca
39
40

41 **Keywords:** Pregnancy, natural killer cell, uterus, decidua, maternal obesity, killer cell
42 immunoglobulin-like receptor

Castellana *et al*

1
2
3
4
5
6
7
8

CONFLICT OF INTEREST

The authors declare no conflict of interest.

Castellana *et al*

1 **ABSTRACT**

2 In pregnancy, uterine natural killer cells (uNK) play essential roles in coordinating uterine
3 angiogenesis, blood vessel remodeling, and promoting maternal tolerance to fetal tissue. Deviances
4 from a normal uterine microenvironment are thought to modify uNK function(s), limiting their ability
5 to establish a healthy pregnancy. While maternal obesity has become a major health concern due to
6 associations with adverse effects on fetal and maternal health, our understanding into how obesity
7 contributes to poor pregnancy disorders is essentially unknown. Given the importance of uNK in
8 pregnancy, this study sets out to examine if obesity affects uNK function. Using a cohort of pregnant
9 women, we show that baseline activity of uNK from obese women is elevated, but that enhanced
10 activity does not equate to increased killing potential. Instead, obesity associates with altered uNK
11 production of angiogenic VEGF-A and PlGF. These changes coincide with alterations in NKp46⁺ and
12 NKG2A⁺ uNK subsets and elevated expression of KIR2D(L1/S1/S3/S5) receptors. Detailed
13 examination revealed that obesity leads to imbalances in KIR2DL1/S1 expression that together instruct
14 altered responses to HLA-C2 antigen, including increased production of TNF α . Together, these
15 findings suggest that maternal obesity modulates uNK function by altering angiokine/cytokine
16 production and the response to HLA-C2 antigen.

17

18

Castellana *et al*

1 INTRODUCTION

2 Establishment of the fetal-maternal interface in early pregnancy requires coordinated
3 interactions between fetal and maternal cells that help direct placentation and ensure an adequate blood
4 supply to the developing fetus. Early stages of uterine angiogenesis, arterial remodeling, trophoblast
5 invasion & survival, as well as maternal tolerance toward the fetal semi-allograft are controlled in part
6 by maternally-derived uterine immune cells^{1,2}. In particular, uterine natural killer cells (uNK),
7 identifiable as CD56^{bright}/CD16⁻ cells in humans, constitute the most abundant leukocyte population
8 within the uterus accounting for ~70% of immune cells^{2,3}. Unlike peripheral blood NK cells (pbNK),
9 uNK do not normally mount cytotoxic responses, but instead help coordinate placental development by
10 controlling uterine neo-angiogenesis and spiral artery remodeling, as well as limiting the immune
11 response against fetal antigen⁴.

12 NK activity (i.e. cytotoxicity, cytokine & angiokine production) is controlled in part by
13 activating and inhibiting natural killer receptors (NKR). NKRs bind epitopes expressed on major
14 histocompatibility (MHC) class I and class I-like molecules, stress-related molecules and cytokines⁵⁻⁷.
15 Generally, signaling via activating receptors stimulate cytolytic programs whereas signaling via
16 inhibitory receptors drives immuno-tolerance through mechanisms that dampen activating NKR signal
17 transduction pathways⁸. uNK are phenotypically distinct from pbNK (pbNK are defined phenotypically
18 as CD56^{dim}/CD16⁺) in that they express a distinct repertoire of NKRs that facilitate interaction with
19 trophoblast-derived MHC class I molecules (HLA-C, HLA-E, and HLA-G) but not HLA-A or HLA-
20 B⁹. Depending on the activating/inhibitory NKR balance, interaction of uNK with MHC ligand can
21 promote or restrain uNK activity. It is suggested that inadequate (not enough) or inappropriate (too
22 much) uNK activation contributes to preterm birth, recurrent miscarriage, and preeclampsia by limiting
23 angiogenesis/artery remodeling or over-sensitizing uNK to being cytotoxic¹⁰⁻¹⁶.

Castellana *et al*

1 Obesity, with a prevalence between 13-18% in women of reproductive age¹⁷, correlates with
2 higher incidences of poor pregnancy outcomes^{18,19}. For example, pre-existing obesity associates with
3 recurrent miscarriage²⁰, gestational diabetes²¹, preterm birth²², and preeclampsia²³. Studies designed to
4 generate insight into how maternal obesity contributes to poor pregnancy outcomes have shown in
5 rodents that high-fat diet exposure prior to and during pregnancy results in impaired uterine artery
6 remodeling^{24,25}. Notably, vascular defects of this type are also observed in rats and mice deficient in
7 uNK²⁶. Consistent with these observations, previous findings from our group show that maternal
8 obesity in women associates with impaired uterine artery remodeling²⁷. Importantly, we show that
9 vascular changes coincide with fewer uNK and altered global uNK gene expression²⁷. Together, these
10 studies suggest that obesity may modify pro-angiogenic and vascular-remodeling programs controlled
11 by uNK within the maternal-fetal interface. However, little is known about how maternal obesity
12 affects uNK biology.

13 In this study we examine if maternal obesity alters uNK activity and function. We show that
14 uNK from obese women are more active and secrete different amounts of the angiogenic factors PlGF
15 and VEGF-A. Phenotypic analyses show altered expression of NKRs in obese women compared to
16 lean women, where differences in activating (NKp46, KIR2DS1) and inhibitory (NKG2A, KIR2DL1)
17 NKR cell populations are observed. Importantly, we provide evidence that the increase in obesity-
18 linked uNK activity is in part due to changes in expression of the NKRs KIR2DL1 and KIR2DS1. We
19 show that upon HLA-C2 stimulation, KIR2DS1-expressing uNK from lean and obese women
20 differentially regulate TNF α production. Together, this work provides insight into how maternal
21 obesity affects uNK function. Further, this work identifies uNK-directed processes modified in obesity
22 that may contribute to impaired vascular remodeling, placental function and pregnancy outcome.

23

Castellana *et al*

1 **RESULTS**

2 **Maternal obesity promotes uNK activation**

3 Our lab previously reported that maternal obesity associates with reductions in uNK cell
4 numbers and coincides with impaired uterine blood vessel remodeling²⁷. To examine if these changes
5 might be linked with altered uNK activity, we compared degranulation/activation responses in uNK
6 isolated from lean (BMI 20-24.9 kg m⁻²) and obese (BMI ≥30 kg m⁻²) women in their first trimester of
7 pregnancy (Table 1). Following culture in the presence or absence of phorbol 12-myristate 13-
8 acetate/ionomycin (PMA), uNK activity was measured via surface expression of the degranulation
9 marker CD107a²⁸. For these studies, uNK were defined as CD56^{bright}/CD9⁺/CD16⁻/CD3⁻ CD45⁺ cells
10 (Figure 1a). As expected, PMA stimulation resulted in potent uNK activation in both BMI groups
11 (Figure 1b,c). However, proportions of CD107a⁺ uNK from obese women were more abundant in both
12 unstimulated (median = 5.4% vs 2.6%) and stimulated (median = 11.8% vs 5.9%) conditions (Figure
13 1c). These initial findings indicate that maternal obesity associates with a heightened state of uNK
14 activation.

15

16 **Obesity associates with altered uNK angiokine production**

17 To gain insight into how obesity-linked differences in uNK activity translate into uNK
18 functional differences, we measured by flow cytometry the intracellular production of tumor necrosis
19 factor α (TNF α) and interferon gamma (IFN γ), two cytokines expressed by uNK known to play central
20 roles in uterine blood vessel remodeling²⁹. In line with higher CD107a⁺ uNK proportions, a non-
21 significant but trending increase in baseline TNF α production was observed in uNK from obese women
22 ($P = 0.05$); baseline IFN γ levels between BMI groups were similar (Figure 2a-c). Following PMA
23 stimulation, uNK from both groups markedly enhanced production of TNF α and IFN γ (Figure 2c).

Castellana *et al*

1 Although we did not detect a significant difference in cytokine expression between BMI groups, uNK
2 from obese women again showed a slight tendency to produce more TNF α (median = 19.4% vs 9.9%,
3 $P = 0.05$) (Figure 2c).

4 To complement the above intracellular cytokine measurements, we also measured the secretion
5 of 8 factors from conditioned media (CM) generated by uNK-enriched *ex vivo* cultures (> 60% uNK)
6 from lean and obese women. These factors included: granulocyte-macrophage colony-stimulating
7 factor (GM-CSF), interleukin 10 (IL10), interferon- γ inducible protein 10 (IP10), macrophage
8 inflammatory protein 1 β (MIP1 β), placental growth factor (PlGF), TNF α , and vascular endothelial
9 growth factor A and C (VEGF-A, VEGF-C). These cytokines were chosen based on prior studies
10 showing their production by uNK and their importance in controlling pregnancy-related processes^{30,31}.
11 uNK CM from obese women secreted lower amounts of VEGF-A (median = 6.8 pg/ml vs 18.4 pg/ml)
12 and higher amounts PlGF (median = 1.0 pg/ml vs 0.3 pg/ml) (Figure 2d). However, secretion of TNF α ,
13 VEGF-C, GM-CSF, IL10, IP10 and MIP1 β were comparable between uNK CM from either BMI
14 group (Figure 2d-f). Our results suggest that obesity-linked changes in uNK activity translate into
15 differences in angiokine secretion, reflecting possible modifications to angiogenic processes.

16

17 **Maternal obesity associates with phenotypical differences in NKR expression**

18 Our finding that maternal obesity associates with heightened uNK activity and altered angiokine
19 production indicates that differences in NKR expression/abundance may exist. To examine this, we
20 compared the expression of 8 NKRs in uNKs from lean and obese women using a flow cytometry
21 approach outlined in Supplementary Figure 1a. Specifically, we measured activating (NKG2D) and
22 inhibitory (NKG2A) CD94/NKG2 family members, natural cytotoxicity receptors NKp30, NKp44 and

Castellana *et al*

1 NKp46, inhibitory leukocyte immunoglobulin-like receptor (LILRB) 1, and members of the killer-cell
2 immunoglobulin-like receptor (KIR)2D subfamily [using antibodies targeting KIR2DL4 and
3 KIR2D(L1/S1/S3/S5)]. These NKR were selected in part due to their importance in controlling NK
4 cell activation^{5,6,8}, their prior description in uNK^{30,32}, or their association with pregnancy-related
5 outcome^{16,33,34}. uNK from lean women ubiquitously expressed inhibitory NKG2A and activating
6 NKp30 and NKp46, while varied proportions of NKG2D⁺ (58.9%), LILRB1⁺ (30.1%), and KIR2DL4⁺
7 (62.0%) uNK were observed (Figure 3a-d, and S1b-e). Between BMI groups, proportions of NKG2D⁺,
8 NKp30⁺, NKp44⁺, LILRB1⁺, and KIR2DL4⁺ uNK were comparable, however, maternal obesity
9 associated with a decrease in NKG2A⁺ (93.3% vs 96.6%) and NKp46⁺ (68.3% vs 96.0%) cell
10 proportions (Figure 3a,b). Interestingly, the decrease in NKp46⁺ cell proportions in obese women was
11 characterized by a distinct bimodal distribution (Figure 3b). Additionally, uNK from obese women had
12 elevated proportions of KIR2D⁺ [L1/S1/S3/S5; herein referred to as KIR⁺] uNK (46.0% vs 35.6%)
13 (Figure 3c). These differences in NKR proportions in obese women also associated with decreases in
14 cell surface levels (median fluorescence intensity; MFI) of NKp46 and NKG2A (NKp46: 1529
15 arbitrary units (AU) vs 2567 AU; NKG2A: 1349 AU vs 2051 AU) (Figure 3a,b). These results suggest
16 that uNK from obese women show a distinct NKR phenotype defined by changes in both activating and
17 inhibitory NKRs.

18

19 **Maternal obesity drives KIR2DL1/S1 NKR imbalances**

20 KIRs are involved in NK cell education, promotion of fetal tolerance and contribution to
21 successful placentation^{35,36}. Because previous studies have highlighted strong associations with
22 pregnancy outcome and KIR2DL1/S1 expression³⁵, and because we showed that maternal obesity
23 associates with increased proportions of KIR2D⁺ uNK, we next set out to examine if maternal obesity

Castellana *et al*

1 leads to imbalances in inhibitory KIR2DL1 (2DL1) or activating KIR2DS1 (2DS1). Using a flow
2 cytometry approach that identifies distinct 2DL1 and 2DS1 single-positive (sp) and mixed double-
3 positive (dp) uNK populations (Figure 4a), we measured proportions and surface expression levels of
4 these KIRs in lean and obese women. Analysis by qPCR revealed that maternal obesity correlates with
5 higher mRNA levels of *KIR2DS1* in uNK (purified by negative selection), while levels of inhibitory
6 *KIR2DL1* and activating *KIR2DS3/5* did not differ between BMI groups (Supplementary Figure S2).

7 As the presence or absence of 2DS1 depends on inherent maternal and paternal haplotype
8 combinations [two main haplotypes exists: haplotype A (HA), primarily comprised of inhibitory
9 receptors (i.e. lacking 2DS1), and haplotype B (HB), containing both activating and inhibitory
10 receptors, including 2DS1³⁷], we sub-stratified lean and obese cohorts into KIR HB⁻ (2DL1⁺/S1⁻) and
11 HB⁺ (2DL1⁺/S1⁺) by PCR genotyping (Supplemental Table 1). Flow cytometry analysis revealed that
12 HB⁻ uNK are negative for 2DS1, whereas mixed 2DL1⁺/2DS1⁺ populations are seen within HB⁺ cells in
13 both lean and obese women (Figure 4a,b). Among HB⁻ individuals (> 95% are allotypically 2DL1³⁸),
14 total proportions of 2DL1⁺ uNK were similar between lean and obese women (Figure 4c). Interestingly,
15 uNK from obese HB⁺ women showed reduced proportions of 2DL1⁺ cells (gated on total CD56^{bright}
16 uNK; median = 23.8% vs 34.5%). In either haplotype, 2DL1 MFI did not differ between lean and obese
17 groups (Figure 4d).

18 Focusing on only HB⁺ (containing *2DS1* gene) uNK, we again examined 2DL1/S1 subsets
19 within KIR⁺ cells in both BMI groups. Proportions of 2DS1sp and dp populations did not differ
20 between lean and obese groups (Figure 4e). However, 2DS1 surface expression (MFI) within the
21 2DS1sp population in obese women was approximately 2-fold higher; levels of 2DL1 within
22 2DL1/S1dp and 2DL1sp populations did not differ (Figure 4e). Measuring 2DS1 MFI on all KIR⁺ uNK
23 (combined 2DS1sp and 2DL1/S1dp populations) showed that, similar to expression within the 2DS1sp

Castellana *et al*

1 population, 2DS1 levels are elevated in uNK from obese women (Figure 4f). Together our results
2 indicate that maternal obesity instructs changes in KIR2D expression to preferentially favour 2DS1,
3 potentially conferring functional changes towards increased cell activation.

4

5 **KIR2DS1⁺ uNK from obese women show enhanced activity**

6 Because KIR expression is influenced by maternal KIR haplotype, we next revisited our
7 findings (Figure 1) that examined if differences in uNK activity exist between lean and obese women
8 by stratifying women into HB⁻ and HB⁺ haplotypes. In non-stimulated conditions, the proportion of
9 CD107a⁺ HB⁻ uNK was not different between BMI groups [1.8% (obese) vs 2.1% (lean)]. However,
10 within HB⁺ uNK, maternal obesity associated with higher proportions of CD107a⁺ cells (6.7% vs 2.7%;
11 Figure 5a). Following PMA stimulation, uNK from obese women of either haplotype degranulated at
12 higher frequencies (HB⁻: 8.2% vs 5.2%; HB⁺: 17.1% vs 8.2%), where HB⁺ uNK cells from obese
13 women showed modestly higher degranulation rates than HB⁻ cells from obese women (Figure 5b).
14 Surprisingly, proportions of TNF α -expressing uNK were higher in PMA-primed HB⁻ cells from obese
15 women, where BMI-associated differences were not seen in HB⁺ cells (Figure 5c). Consistent with our
16 previous results, maternal obesity did not affect proportions of IFN γ expressing uNK, regardless of
17 KIR haplotype (Figure 5c).

18

19 **Obesity, combined with maternal HLA-C2 allotype, potentiates uNK activity**

20 KIR expression can be affected by gestational age³⁹ and maternal HLA-C⁴⁰. To determine if
21 KIR changes may relate to these BMI-independent variables, we next examined if gestational age and
22 maternal HLA-C affects 2DL1/S1 uNK proportions or expression levels. uNK 2DL1/S1 frequency and

Castellana *et al*

1 expression level was comparable amongst different gestational ages (Supplementary Figure S3).
2 Homozygous C1/C1 subjects showed an inverse correlation in 2DS1 and 2DL1 frequency depending
3 on BMI. Specifically, uNK cells from obese C1/C1 women exhibited higher proportions of 2DS1⁺ cells
4 and lower proportions of 2DL1⁺ cells (Supplementary Figure 4b,c). Contrary to these KIR imbalances,
5 we also observed that the presence of maternal HLA-C2 associates with an increase in degranulation in
6 non-stimulated uNK from obese women (compared to C1/C1); this association was not maintained
7 following PMA stimulation (Figure 6a,b). The impact of C2 allele on HB⁺ cells was clear after PMA-
8 priming (Figure 6c). However, HLA-C2-associated heightened activity did not translate into an
9 increase in PMA-stimulated cytokine production, although a modest trend was observed (Figure 6d).
10 These results demonstrate that in the context of obesity, maternal HLA-C2 allele equates to heightened
11 activity in HB⁺ uNK.

12

13 **uNK from obese women show enhanced HLA-C2-induced activity**

14 To examine if KIR2DL1/S1 alterations in obese/HB⁺ uNK translate into functional changes, we
15 measured uNK responsiveness towards ectopically expressed HLA-C2 (Supplementary Figure S5a). To
16 this end, HLA class I-deficient K562 cells stably expressing the HLA-Cw*0602 allele were subjected
17 to uNK activity/killing assays using KIR-genotyped uNK from lean and obese groups. HLA-Cw*0602
18 is the fourth most frequent HLA-C2 allele⁴¹ and its specificity for 2DL1/S1 allowed us to minimize
19 confounding effects elicited by other HLA-C2-receptors (i.e. LILRB1, KIR2DL2/L3, and KIR2DS4)⁴².
20 To control for KIR-HLA-C2 interaction and to enable differentiation between 2DS1/2DL1-directed
21 responses against HLA-C2, CD107a surface mobilization in CD56^{bright}/KIR⁻ cells and HB⁻ uNK were
22 compared to KIR⁺/HB⁺ cells (Figure 7a and S5b). As expected, CD107a mobilization within
23 CD56^{bright}/KIR⁻ uNK (HB⁻ and HB⁺) in response to HLA-C2-expressing K562 cells was minimal

Castellana *et al*

1 (Supplementary Figure S5b). Similarly, HB⁻ KIR⁺ uNK (lacking 2DS1) from both BMI groups were
2 also minimally responsive towards HLA-C2 (Figure 7b). Importantly, 2DS1⁺ cells from HB⁺ obese
3 women showed significantly higher CD107a mobilization than 2DS1⁺ cells from lean women in
4 response to high levels of HLA-C2 expression (4.2% vs 0.3%). While low-level HLA-C2 expression in
5 target cells showed a trend for increased degranulation in obese 2DS1-expressing uNK, this was not
6 significant. Together, these findings suggest that obesity alters the 2DL1/S1 balance in favour of
7 instructing an activating signal (Figure 7b). Interestingly, HB⁺ uNK from obese C1/C1 women, which
8 have lower levels of 2DL1 and increased proportions of 2DS1 (Supplementary Figure S4b,c), had
9 higher degranulation rates compared to HB⁺ uNK from lean C1/C1 women after HLA-C2 stimulation
10 (Supplementary Figure 5c). This suggests that the absence of a maternal HLA-C2 allele may affect
11 KIR2DS1/L1 responsiveness (education/licensing⁴³) to its cognate ligand.

12 Activation of KIR2DS1 strongly triggers cytotoxicity and cytokine production in pbNK, and this
13 engagement in cytotoxicity is more striking in the absence of KIR2DL1⁴⁴⁻⁴⁶. As our above finding
14 shows that HLA-C2 engagement enhances degranulation in HB⁺ uNK from obese women, we next
15 examined whether HLA-C2 interactions also induce cytotoxicity. As expected, HLA-C2 interaction
16 with HB⁺ uNK resulted in increased early apoptosis (measured by annexin V) of K562 target cells
17 compared to culture with HB⁻ uNK cells (K562: 14.9% vs 9.8%; K-C2 Lo: 26.5% vs 14.2%; K-C2 Hi:
18 28.9% vs 16.0%); however we did not observe differences in late apoptosis based on KIR haplotype
19 (Figure 7c,d). Moreover, within HB⁺ uNK, maternal obesity seemed to associate with impaired HLA-
20 C2 instructed K562 killing, although low sample size/power prevented conclusive interpretation
21 (Figure 7c,d). To complement annexin V killing assays, we also analyzed whether secreted perforin
22 levels were different among lean and obese HB⁺ subjects. In agreement with the annexin V results, the
23 levels of secreted perforin were comparable among BMI groups (Figure 7e). However, obesity

Castellana *et al*

1 appeared to dampen perforin secretion, suggesting that maternal obesity results in impaired uNK
2 cytotoxicity. To exclude the contribution of other KIR-expressing cells in HLA-C2 directed cytotoxicity,
3 we also analyzed proportions of T (CD3⁺) and NKT (CD56⁺/CD3⁺) cells and their degranulation upon
4 HLA-C2 stimulation. We found the contribution of these cells on cytotoxicity was negligible
5 (Supplementary Figure S6). These findings suggest that although HB⁺ uNK cells from obese women
6 show enhanced HLA-C2 instructed activity (CD107a mobilization), this does not translate into
7 enhanced cytotoxicity.

8

9 **Skewing of 2DS1 in lean and obese women results in dichotomous TNF α production**

10 To investigate if the obesity-linked KIR2D-associated increase in uNK activity may also
11 translate into altered production of cytokines/angiokines important in pregnancy, we measured factors
12 from our cytokine 8-plex panel in conditioned media of HB⁺ and HB⁻ uNK from lean and obese women
13 stimulated with a KIR2DL1/S1 crosslinking/activating antibody (clone 11BP6). Changes in cytokine
14 secretion in uNK activated with 11BP6 were compared to responses from isotype-matched IgG1
15 antibody treatment within paired uNK cultures. As expected, 11BP6 treatment in HB⁺ uNK led to
16 CD107a surface induction, whereas crosslinking did not lead to degranulation responses in HB⁻ cells;
17 these findings indicate that 11BP6 is only capable of inducing an activating response in uNK
18 expressing 2DS1 (Figure 8a). Within lean HB⁺ uNK, 11BP6 crosslinking resulted in an overall
19 decrease in TNF α ; two 2DS1sp-containing uNK preparation responded to HLA-C2 by promoting
20 TNF α secretion (Figure 8b). As expected, secretion of TNF α in HB⁻ uNK from either lean or obese
21 groups was not affected (Supplementary Figure 7a). Additionally, we did not observe consistent
22 changes in PIGF, VEGF-A, VEGF-C, GM-CSF, IL10, IP10 or MIP1 β following 2DL1/2DS1
23 crosslinking in uNK from lean HB^{+/-} women (Figure 8b-d and S7). While a trending increase in GM-

Castellana *et al*

1 CSF production was observed in HB⁺ uNK from obese women following crosslinking, penetrant and
2 consistent increases in TNF α production were observed (Figure 8b,d). Notably, a significant interaction
3 between KIR2DL1/S1 crosslinking and BMI was identified, where 11BP6 had opposing effects on
4 TNF α production in uNK from lean and obese women (Figure 8b). Taken together, KIR2DL1/S1
5 crosslinking in uNK cultures from obese/HB⁺ women promoted TNF α secretion and also appeared to
6 dampen the inhibitory effect of cytokine secretion (i.e. PlGF and TNF α) that was observed in lean HB⁺
7 cells. These data suggest that the uNK KIR2DL1/S1 imbalance in obese women, potentially favouring
8 2DS1 activity, differentially regulates HLA-C2-induced secretion of key factors important in vascular
9 remodeling.

10

11

Castellana *et al*

1 **DISCUSSION**

2 In the present study we examined the effects of maternal obesity on uNK activity and function.
3 We show that maternal obesity links with heightened uNK activation/degranulation, and that this
4 change associates with differences in multiple NKR known to play roles in uNK biology. Specifically,
5 we found that obesity correlates with reductions in NKp46 and NKG2A cell frequencies, while in HB⁺
6 obese women, exacerbated uNK activity is driven in part by an imbalance in activating KIR2DS1 and
7 inhibitory KIR2DL1 receptor expression. This altered obesity-related KIR2D phenotype, when
8 challenged with ectopic HLA-C2, led to a selective increase in TNF α production and the blunting in
9 inhibition of other key soluble factors. These findings highlight how the condition of obesity is able to
10 instruct functional changes in uNK and establishes insight into how uNK respond and/or adapt to an
11 obesogenic environment.

12 Our finding that maternal obesity associates with increased uNK activity is both novel and
13 complex. While uNK have a complete arsenal of lytic granules (perforin, granzyme A/B, granulysin),
14 their ability to mount cytotoxic responses against target cells is largely impaired compared to their
15 peripheral NK counterparts³². This difference is most likely due to the robust expression of inhibitory
16 NKR (KIR2DL1, KIR2DL4, NKG2A, LILRB1) in uNK and a hampered ability for uNK to form
17 effective effector-target cell synapses³². Inhibitory NKRs facilitate uNK interaction with trophoblast
18 MHC-I antigen (i.e. HLA-C, HLA-E and HLA-G) to generate tolerogenic signals towards the fetus⁴⁷.
19 Even though our work shows that obesity associates with enhanced uNK activity/degranulation and
20 links with altered NKR expression that might seemingly equate to increased cytotoxicity (i.e. decreases
21 in NKG2A & KIR2DL1; increase in KIR2DS1), these changes did not lead to enhanced K562 cell
22 killing. Instead, heightened uNK activity correlated with altered angiokine (increased PlGF, decreased
23 VEGF-A) and KIR2DS1/L1-instructed TNF α production. These findings indicate that although obesity

Castellana *et al*

1 correlates with a shift towards activating NKRs in uNK, inhibitory mechanisms preserving immuno-
2 tolerance/impaired cytotoxicity are largely maintained. Therefore the outcome of increased uNK
3 activity resulting from obesity most likely affects uterine vascular remodeling and angiogenesis.
4 Although our study does not examine this, prior studies showing impaired blood vessel remodeling in
5 rodents subjected to high-fat diets^{24,25} and in obese pregnant women^{23,27} indicate that these vascular
6 defects may be the result of obesity-directed changes in uNK function. Further mechanistic work is
7 therefore required to decipher these interactions.

8 Our focus on KIR2D(L1/S1) stems from prior research showing the importance of these two
9 receptors in controlling aspects of placental development and in their associations with poor pregnancy
10 outcomes^{11,35,48}. Notably, HLA-C2 directed activation of KIR2DS1⁴⁹ and the resulting expression of
11 GM-CSF in 2DS1sp uNK was shown to promote trophoblast invasion³⁵. Moreover, a KIR2DS1⁺
12 containing genotype (i.e. *KIR B* haplotype), in association with fetal HLA-C2 allotype, provides
13 protection from pregnancy disorders like recurrent miscarriage, preeclampsia, and intrauterine growth
14 restriction³⁶. In contrast to this, a maternal *KIR AA* genotype (containing 2DL1, but not 2DS1)
15 combined with fetal HLA-C2 increases the risk of aberrant pregnancy outcome^{36,48}. Our finding that
16 maternal obesity associates with decreased proportions of 2DL1⁺ uNK and increased expression of
17 2DS1 in only *KIR B* haplotype (HB⁺) women was somewhat perplexing due to obesity's predisposition
18 towards having a poor pregnancy outcome^{23,50}. Our results indicate that, with respect to KIR2DL1/S1
19 composition, HB⁺ uNK from obese women may actually be more capable of promoting healthy
20 placentation and may be protective against aberrant pregnancies. It may therefore be that HB⁺ uNK
21 establish an active phenotype as a compensatory mechanism to facilitate successful placentation in
22 obesity. In contrast, HB⁻ uNK (containing 2DL1, but not 2DS1), in the context of obesity, may show
23 aberrant/insufficient activation leading to compromised vascular remodeling and/or inadequate

Castellana *et al*

1 placentation, and thus contribute to or potentiate poor outcomes in these women. Indeed, HB⁻ uNK
2 from obese women were more efficient producers of TNF α following PMA stimulation and secreted
3 lower amounts of GM-CSF compared to HB⁻ uNK from lean women, suggesting these cells may have
4 enhanced cytotoxic potential and/or an impaired ability to promote trophoblast invasion.

5 Comparison of cytokine/angiokine secretion profiles following KIR2DS1/L1 activation in HB⁺
6 uNK (2DL1⁺/2DS1⁺) identified TNF α as a cytokine that is differentially regulated with respect to
7 KIR2DL1/S1 balance. Within the context of HB⁺ lean women where 2DL1⁺ uNK proportions are
8 approximately 1.5-fold higher compared to HB⁺ obese women, 2DL1/S1 activation results in decreased
9 TNF α production. In contrast, 2DL1/S1 activation with uNKs from obese women who have fewer
10 2DL1⁺ cells and also express higher levels of surface 2DS1 leads to an enhancement in, or at the very
11 least, the maintenance of TNF α production. These findings indicate that 2DL1 and 2DS1 play opposing
12 roles in controlling TNF α secretion, a finding that is consistent with previous work showing that 2DS1
13 engagement with HLA-C2 in CD8⁺ $\gamma\delta$ T cells induces TNF α ⁵¹. Surprisingly, HLA-C2 interaction did
14 not potentiate an increase in CD107a expression over baseline levels observed in obese uNK exposed
15 HLA-C2-deficient target cells. This inconsistency could be explained by the presence of other
16 activating NKR receptors responding to target cell exposure (independent of HLA-C2). Moreover, our findings
17 also illustrate how environmental factors, such as obesity, can differentially modulate KIR2D receptor
18 activity following HLA-C interaction. Since factors that regulate KIR2DL1/S1 expression include prior
19 exposure to HLA-C and DNA methylation, and as changes in DNA methylation within
20 promoter/enhancer regions of genes have been associated with obesity⁵², it would be important to
21 examine if obesity regulates KIRs via epigenetic mechanisms.

22 In addition to KIR2DL1/S1 alterations, our findings also indicate that maternal obesity
23 associates with changes in other non-KIR NKR receptors that may play roles in modifying uNK function.

Castellana *et al*

1 Specifically, we show that both inhibitory NKG2A and activating NKp46 expression levels and uNK
2 proportions are decreased in obesity. Within the uterine environment, NKG2A's primary ligand is
3 fetal/maternal derived HLA-E, and this interaction is thought to promote strong tolerogenic/inactivating
4 signals. Thus a loss or reduction in NKG2A signal may be a contributing factor in increased uNK
5 activity in obesity. Our observation of a bimodal distribution of NKp46⁺ uNK in obese women was
6 interesting, and was in stark contrast to the near ubiquitous nature of NKp46 in uNK from lean women.
7 Given that NKp46 is a member of the natural cytotoxicity receptor family and is directly involved in
8 target cell recognition and cytolysis⁵³, our finding that NKp46 proportions and expression levels
9 decrease in obesity is contradictory to our finding that obesity also correlates with enhanced surface
10 CD107a/degranulation. However, in pbNK, lower surface levels of NKp46 associate with enhanced
11 activity and exposure to hCMV infection^{54,55}. Other studies have shown that increases in NKp46⁺ NK
12 proportions align with enhanced cytotoxicity⁵⁶.

13 How NKp46 modifications in obese uNK contribute to overall activity and function at this point
14 is unclear. It is tempting to speculate that the combined decrease in NKG2A in uNK may translate to
15 enhanced NKp46 function, a relationship that has been previously identified⁵⁶. Alternatively, loss of the
16 mouse NKp46 orthologue (NCR1) results in penetrant uterine vascular defects defined by impaired
17 angiogenesis, delayed conceptus growth and increased resorption frequencies⁵⁷, findings that are
18 consistent with rodent and human studies showing obesity-related uterine blood vessel defects^{27,24,25}.
19 Additionally, NKp46 antibody crosslinking in human uNK induces production of angiogenic VEGF-A
20 and PIGF^{30,58}, a finding somewhat consistent with our observation that uNK from obese women secrete
21 less VEGF-A, albeit higher amounts of PIGF. It is possible that this VEGF-A/PIGF imbalance may
22 instruct a shift from PIGF/VEGF-coordinated angiogenesis to aberrant pro-inflammatory signals that
23 are characteristic of conditions associated with elevated levels of PIGF⁵⁹ and which have been

Castellana *et al*

1 reported to coincide with early pregnancy loss⁵⁹. Therefore it seems possible that uterine vascular
2 defects and altered angiokine profiles seen in obese women may in part be the result of altered NKp46
3 activity.

4 uNK are specialized cells that are thought to play essential roles in coordinating and controlling
5 critical processes in pregnancy. While uNK bear some similarities to cytotoxic pbNK counterparts (i.e.
6 contain cytolytic granules), their primary role does not appear to involve the induction of cell-mediated
7 killing. While our study provides evidence that changes within the maternal environment resulting from
8 obesity lead to profound phenotypic and functional differences in uNK, these changes appear to impact
9 predominately angiogenic pathways and do not instruct heightened killing activity. Moving forward, it
10 will be important to examine how the condition of obesity instructs altered uNK function. Identification
11 of obesity-enriched or depleted factors within the maternal-fetal interface that contribute to uNK
12 dysregulation will be important in generating an understanding into the etiology of obesity-related
13 pregnancy disorders.

14

15

Castellana *et al*

1 **METHODS**

2 **Patient recruitment and tissue collection**

3 Informed written consent was obtained from women (19 to 35 years of age) that were
4 undergoing elective pregnancy termination at British Columbia's Women's Hospital, Vancouver,
5 Canada. This study was conducted with approval from the Research Ethics Board on the use of human
6 subjects, University of British Columbia (H13-00640). Fresh first trimester decidual tissues (5 to 12
7 weeks of gestation) and whole blood (N = 184) were collected from participating women having
8 confirmed viable pregnancies indicated by ultrasound-measured fetal heartbeat. Decidual tissue
9 samples were selected based on the presence of a smooth uterine epithelial layer and a coarse/textured
10 thick spongy underlayer. Patient clinical characteristics i.e. height and weight were additionally
11 obtained to calculate body mass index (BMI: kg/m²). Samples were classified as lean (BMI 20-24.9
12 kg/m²; n = 104) or obese (BMI ≥30 kg/m²; n = 80). Further information regarding the studied cohorts is
13 depicted in Table 1.

14 Decidual tissues collected after elective termination of pregnancy were washed extensively in
15 ice-cold phosphate buffered saline (PBS; pH 7.4) after which tissue was finely minced using sterile
16 razor blades and subjected to enzymatic digestion. Decidual leukocyte-enrichment was performed
17 using methods previously described in Perdu *et al* ²⁷. Briefly, minced decidual homogenates were
18 subjected to 1 h enzymatic digestion at 37 °C in 4 mL of 1:1 DMEM/F12 media (Gibco, Grand Island,
19 NY; 200 mM L-glutamine) containing 1X-collagenase/hyaluronidase (10X stock; StemCell
20 Technologies, Vancouver, Canada), 80 µg/mL DNaseI (Sigma, St. Louis, MO),
21 penicillin/streptomycin, and Anti antimycotic solution (100X dilution). Decidual leukocyte enrichment
22 was obtained via discontinuous Percoll density gradient centrifugation (layered 40%/80%); enriched
23 decidual leukocytes are routinely > 90% CD45⁺ cells as assayed by flow cytometry. Decidual

Castellana *et al*

1 leukocytes were either 1) immediately used to isolate uNK for RNA extraction or short-term cell
2 culture experiments, 2) stored in freezing media (90% FBS + 10% DMSO) to be used for down-stream
3 cell surface marker characterization via flow cytometry, or 3) subjected to cytokine expression or
4 cytotoxicity experiments.

5

6 **Flow cytometry analysis**

7 Following washing in fluorescence-activated cell sorting (FACS) buffer (PBS 1X, 1:1000
8 FVD780, 1% FBS), 1×10^6 total decidual leukocytes cells were, incubated with FcBlock (Thermo Fisher
9 Scientific, Waltham, MA, USA) for 10 minutes to block unspecific binding. Cells were then incubated
10 with different combinations of fluorescent-conjugated antibodies directed against specific extracellular
11 markers (refer to Supplementary Table 2) for 30 minutes at 4°C.

12 For *intracellular cytokine detection of TNF α and IFN γ* , cells were stimulated with 10 ng/ml
13 phorbol 12-myristate 13-acetate (PMA) and 500 ng/ml ionomycin (Sigma, St Louis, MO), for 4 hours
14 in the presence of protein transport inhibitors, monensin and brefeldin A (Thermo Fisher Scientific).
15 After stimulation, cells were washed twice with PBS, stained for extracellular markers, fixed and
16 permeabilized with Fixation/Permeabilization buffer (Thermo Fisher Scientific), respectively. Cells
17 were resuspended in 200 μ l of PBS and samples were run on a LSRII FACS (BD Biosciences, San
18 Jose, CA, USA). Data was analysed by FlowJo 5.0 (Tree Star, Inc., Ashland, OR, USA).

19 For the *discrimination of KIR2DS1 and KIR2DL1 cell subsets*, cells were stained for 15 minutes
20 at RT with 10 μ l of KIR2DL1. Then, cells were staining with the rest of the markers including
21 KIR2DL1/S1 antibody for 20 minutes at 4°C. Traditional flow cytometry gating strategies for assessing
22 of KIR2DL1/S1 populations gated on CD56^{bright} (total) uNK cells, but in this study we gated on
23 CD56^{bright}/KIR⁺ cells. The advantage of our strategy allows recognition of subjects carrying the

Castellana *et al*

1 *KIR2DL3*005* allele, which would be wrongly identified as a *KIR2DS1sp* subset (Supplementary
2 Figure S8a) due to non-specific binding of monoclonal *KIR2DL1/S1* antibodies (clones EB6B and
3 11PB6)⁶⁰. Analysis of our data using the conventional gating strategy showed no differences
4 (Supplementary Figure S8b) with the results obtained for gated *KIR*⁺ uNK (Figure 4e).

6 Gene expression analysis

7 Prior to RNA extraction, uNK were enriched using a negative selection exclusion strategy using
8 immuno-labeled magnetic beads cocktails following the manufacturers protocol (EasySep Human NK
9 cell Enrichment Kit; StemCell Technology). Total RNA was prepared from magnetic-bead enriched
10 uNK cells using the RNAqueous Total RNA Isolation Kit following the manufacturer's instructions
11 (Ambion, Austin, TX). RNA purity was confirmed using a NanoDrop Spectrophotometer (Thermo
12 Fisher Scientific). One microgram of RNA was reverse-transcribed using a first-strand cDNA synthesis
13 kit (QuantaBiosciences Inc., Gaithersburg, MD) and subjected to qPCR ($\Delta\Delta$ CT) analysis, using
14 TaqMan Universal Master Mix II (Life Technologies, Waltham, MA) on an ABI 7500 Sequence
15 Detection System (Life Technologies). Primer sets and Taqman MGB probes (6FAM 5'-3' MGBNFQ)
16 used for qPCR analysis were as follow: 2DL1F: 5'-GCAGCACCATGTCGCTCT-3'; 2DL1R: 5'-
17 GTCACTGGGAGCTGACAC-3'; Probe: 5'-ATGCTGACGAACAAGAG-3'; 2DS1F: 5'-
18 TCTCCATCAGTCGCATGA-3'; 2DS1R: 5'-AGGGCCCAGAGGAAAGTT-3'; Probe: 5'-
19 AGGTCTATATGAGAAACC-3'; 2DS3F; 5'-TCACTCCCCCTATCAGTTT-3'; 2DS3R; 5'-
20 GCATCTCTAGGTTCTCCT-3'; Probe: 5'-GCCCCACGGTTCT-3'; 2DS5F; 5'-
21 GCTCATGGTCATCAGCATGG-3'; 2DS5R; 5'-CGACCGATGGAGAAGTTGC-3'; Probe: 5'-
22 CACATGAGGGATTCC. *ACTB* (β -actin) FAM (Hs99999903_m1) from Thermo Fisher. Gene
23 expression was normalized to β -actin levels.

Castellana *et al*

1

2 **Genetic typing of KIR2DS1 and HLA-C1/2**

3 Genomic DNA was extracted from peripheral blood mononuclear cells (PBMCs) by DNeasy Blood kit
4 (QIAGEN, Hilden, Germany). PCR amplification was performed using KIR specific sequence primers
5 ⁴⁸ to identify the presence or absence of *KIR2DS1* and *KIR2DL1* genes (Supplementary Table 3). HLA-
6 C genes were allotype as either C1 or C2 using sequence specific nucleotides primers as described in ⁶¹
7 and KIR and HLA-C genotypes were assigned (Supplementary Table 1,3).

8

9 **Viral infection of K562 cells with HLA-Cw*0602**

10 Lentiviral vector pHRSIN-HLA-Cw*0602 (kindly donated by Professor John Trowsdale from
11 University of Cambridge, UK) was transiently co-transfected into the HEK293T packaging cell line
12 (kindly provided by Dr. John Priatel, BC Children's Hospital Research Institute, Canada) using
13 Lipofectamine[®] 2000 (Thermo Fisher Scientific), together with psPAX2 and pMD2.G vectors (gifted
14 by Dr. Christopher Maxwell, BC Children's Hospital Research Institute, Canada). Supernatants were
15 harvested 48 hours post-transfection and used to infect K562 cells (provided by Dr. John Priatel, BC
16 Children's Hospital Research Institute, Canada). Positive clones were sorted based on the expression
17 level of an Emerald green fluorescent protein (eGFP) reporter gene using a BD FACSAria[™] IIu cell
18 sorter (BD Biosciences). Cells were sorted directly into growth media.

19

20 **Functional assays**

21 An enriched decidual uNK cell fraction was used for all functional assays (> 60% uNK).

22 *Degranulation/activity* assays were assessed by flow cytometry as described previously²⁷.

23 Briefly, 1×10^6 uNK were cultured alone (non-stimulated), primed with 10 ng/ml PMA, and 500 ng/ml

Castellana *et al*

1 ionomycin, or in co-culture with 2×10^5 K562 target cells (Effector:Target ratio of 5:1). Next, brefeldin
2 A at 3 $\mu\text{g/ml}$ and monensin at 10 $\mu\text{g/ml}$ from Thermo Fisher were added for the last 3 hours. Uterine
3 NK cells then were stained following the same procedure described in the flow cytometry section. At
4 least 20,000 events were collected in the stopping gate ($\text{CD3}^- \text{FVD780}^- \text{CD45}^+ \text{CD56}^{\text{bright}}$ cells).

5 *Apoptosis Annexin V/FVD780* assay was performed using Annexin V-PeCy7 antibody (Thermo
6 Fisher Scientific). Culture conditions were the same as described for the K562 target cell degranulation
7 assay (ratio 5:1), without the addition of brefeldin A or monensin. After 4 hours of co-culture, decidual
8 leukocytes and K562 target cells stained for FVD780 and CD45-ef450 for 30 minutes at 4°C .
9 Following washes with Binding Buffer (Thermo Fisher Scientific), cells were stained for Annexin V
10 for 10 minutes at RT, washed in in 200 μl of Binding Buffer 1X, and data was acquired on an LSRII
11 FACS (BD Biosciences); at least 20,000 events were collected.

12 *Perforin ELISA*. Cell culture supernatants were harvested after 4 hours of decidual leukocyte
13 co-culture with K562 target cells, centrifuged, and snap frozen in liquid nitrogen. Secreted perforin
14 measurements were conducted using Human Perforin ELISA kit (Origene, Rockville, MD, USA)
15 following manufacturer's instructions. ELISA plates were read using a FLUOstar Optima plate reader
16 (BMG LabTech).

17

18 **Multiplex cytokine/angiokine/chemokine array**

19 Decidual leukocytes (DL; $> 60\%$ uNK) stimulated by KIR2DL1/S1 receptor ligation using
20 antibody-coated V-bottom 96-well plates (Corning, NY, USA). KIR2DL1/S1 antibody (clone 11PB6;
21 Miltenyi Biotec, Bergisch Gladbach, Germany) or IgG1 (Thermo Fisher) were coated at a
22 concentration of 2.5 $\mu\text{g/ml}$ in 50 mM HEPES buffer at 4°C overnight. Following antibody coating,
23 wells were washed three-times with PBS and 5×10^5 DL were seeded in RPMI1640 medium containing

Castellana *et al*

1 10% FBS, 1 mM sodium pyruvate (Life Technologies), 55 nM β ME (Sigma), 1%
2 penicillin/streptomycin (Life Technologies), and 1% anti antimycotic (Life Technologies) at 37°C 5%
3 CO₂. After 4 hours, cell supernatants were collected and analyzed for secreted factors using a custom
4 V-PLEX human biomarkers multiplex assay (PIGF, VEGF-A, VEGF-C, TNF α , GM-CSF, IL10, IP10,
5 and MIP1 β) according to manufacturer's procedures (Meso Scale Discovery, Rockville, MD, USA).

6

7 **Statistical analysis**

8 Quantitative PCR (qPCR) gene expression data are presented as mean values \pm standard
9 deviation (SD). Flow cytometry and cytokine array data are presented as median values and inter-
10 quartile ranges (IQRs). Differences in continuous variables between two groups were analyzed for
11 statistical significance by non-parametric two-tailed Mann-Whitney U test. Statistical comparisons of
12 uNK cell frequencies and MFIs among (BMI, HLA-C, HB) groups were analyzed using a non-
13 parametric Kruskal-Wallis test; multiple comparisons were controlled for using Dunn's post test. For
14 identification of BMI-related interactions with KIR2DL1/S1 crosslinking cytokine production, a two-
15 way repeated measures ANOVA was performed. Statistical analyses were performed with GraphPad
16 Prism software (La Jolla, CA, USA).

17

Castellana *et al*

1 **AUTHOR CONTRIBUTIONS**

2 AGB designed the research. BC, SP, YM, KC, MM, JA, and AGB, performed experiments and
3 analysed data. BC and AGB wrote the paper. All authors read and approved the manuscript.

4
5 **FUNDING**

6 This work was supported by a SickKids Foundation New Investigator Grant (to AGB) and a
7 Canadian Institutes of Health Research Open Operating Grant (201403MOP-325905-CIA-CAAA) (to
8 AGB).

9
10 **ACKNOWLEDGEMENTS**

11 The authors extend their sincere gratitude to the hard work of staff at British Columbia's
12 Women's Hospital's CARE Program for recruiting participants to our study. We are thankful to Drs.
13 John Priatel (University of British Columbia), Chris Maxwell (University of British Columbia), and
14 John Trowsdale (University of Cambridge) for their generous gifts of the K562 target cell line (Priatel),
15 psPAX2 and pMD2.G packaging vectors (Maxwell), and the pHRSIN-HLA-Cw*0602 lentiviral vector
16 (Trowsdale).

17
18 **CONFLICT OF INTEREST**

19 The authors declare no conflict of interest.

20

1 **REFERENCES**

- 2
- 3 1. Lee, J. Y., Lee, M. & Lee, S. K. Role of endometrial immune cells in implantation. *Clin. Exp.*
4 *Reprod. Med.* (2011).doi:10.5653/cerm.2011.38.3.119
- 5 2. Zhang, J., Dunk, C., Croy, A. B. & Lye, S. J. To serve and to protect: the role of decidual innate
6 immune cells on human pregnancy. *Cell Tissue Res.* (2016).doi:10.1007/s00441-015-2315-4
- 7 3. Moffett-King, A. Natural killer cells and pregnancy. *Nat. Rev. Immunol.* **2**, 656–663 (2002).
- 8 4. Manaster, I. & Mandelboim, O. The Unique Properties of Human NK Cells in the Uterine
9 Mucosa. *Placenta* (2008).doi:10.1016/j.placenta.2007.10.006
- 10 5. Long, E. O., Kim, H. S., Liu, D., Peterson, M. E. & Rajagopalan, S. Controlling natural killer
11 cell responses: integration of signals for activation and inhibition. *Annu. Rev. Immunol.* **31**, 227–
12 58 (2013).
- 13 6. Vacca, P. *et al.* Regulatory role of NKp44, NKp46, DNAM-1 and NKG2D receptors in the
14 interaction between NK cells and trophoblast cells. Evidence for divergent functional profiles of
15 decidual versus peripheral NK cells. *Int. Immunol.* **20**, 1395–1405 (2008).
- 16 7. Vacca, P., Mingari, M. C. & Moretta, L. Natural killer cells in human pregnancy. *J. Reprod.*
17 *Immunol.* (2013).doi:10.1016/j.jri.2012.10.008
- 18 8. Pegram, H. J., Andrews, D. M., Smyth, M. J., Darcy, P. K. & Kershaw, M. H. Activating and
19 inhibitory receptors of natural killer cells. *Immunol. Cell Biol.* **89**, 216–224 (2010).
- 20 9. Moffett, A. & Colucci, F. Uterine NK cells: Active regulators at the maternal-fetal interface. *J.*
21 *Clin. Invest.* **124**, (2014).
- 22 10. Hiby, S. E. *et al.* Combinations of maternal KIR and fetal HLA-C genes influence the risk of
23 preeclampsia and reproductive success. *J. Exp. Med.* **200**, 957–65 (2004).
- 24 11. Dambaeva, S. V. *et al.* Recurrent Pregnancy Loss in Women with Killer Cell Immunoglobulin-
25 Like Receptor KIR2DS1 is Associated with an Increased HLA-C2 Allelic Frequency. *Am. J.*
26 *Reprod. Immunol.* **75**, 94–103 (2016).
- 27 12. Varla-Leftherioti, M. *et al.* Lack of the appropriate natural killer cell inhibitory receptors in
28 women with spontaneous abortion. *Hum. Immunol.* **66**, 65–71 (2005).
- 29 13. Ozturk, O. G., Sahin, G., Karacor, E. D. Z. & Kucukgoz, U. Evaluation of KIR genes in
30 recurrent miscarriage. *J. Assist. Reprod. Genet.* **29**, 933–938 (2012).
- 31 14. Faridi, R. M. *et al.* Influence of activating and inhibitory killer immunoglobulin-like receptors

- 1 on predisposition to recurrent miscarriages. *Hum. Reprod.* **24**, 1758–1764 (2009).
- 2 15. Murphy, S. P. *et al.* Evidence for participation of uterine natural killer cells in the mechanisms
3 responsible for spontaneous preterm labor and delivery. *Am. J. Obstet. Gynecol.* **200**, 308.e1-9
4 (2009).
- 5 16. Wallace, A. E., Whitley, G. S., Thilaganathan, B. & Cartwright, J. E. Decidual natural killer cell
6 receptor expression is altered in pregnancies with impaired vascular remodeling and a higher
7 risk of pre-eclampsia. *J. Leukoc. Biol* **18**, 79–86 (2014).
- 8 17. Ogden, C. L., Carroll, M. D., Kit, B. K. & Flegal, M. Prevalence of Childhood and Adult
9 Obesity in the United States, 2011–2012. *Jama* **311**, 806–814 (2016).
- 10 18. Leddy, M. A., Power, M. L. & Schulkin, J. The Impact of Maternal Obesity on Maternal and
11 Fetal Health. *Rev. Obstet. Gynecol. [Rev Obs. Gynecol]* **1701**, 170–178 (2008).
- 12 19. Dinatale, A. *et al.* Obesity and fetal-maternal outcomes. *J. Prenat. Med.* **4**, 5–8 (2010).
- 13 20. Lashen, H., Fear, K. & Sturdee, D. W. Obesity is associated with increased risk of first trimester
14 and recurrent miscarriage: Matched case-control study. *Hum. Reprod.* **19**, 1644–1646 (2004).
- 15 21. Chu, S. *et al.* Maternal Obesity and Risk of Gestational Diabetes Mellitus. *Diabetes Care* **30**,
16 2070–2076 (2007).
- 17 22. McDonald, S. D., Han, Z., Mulla, S. & Beyene, J. Overweight and obesity in mothers and risk of
18 preterm birth and low birth weight infants: systematic review and meta-analyses. *Bmj* **341**,
19 c3428–c3428 (2010).
- 20 23. Spradley, F. T., Palei, A. C. & Granger, J. P. Immune Mechanisms Linking Obesity and
21 Preeclampsia. *Biomolecules* **5**, 3142–3176 (2015).
- 22 24. Parker, V. J., Solano, M. E., Arck, P. C. & Douglas, A. J. Diet-induced obesity may affect the
23 uterine immune environment in early–mid pregnancy, reducing NK-cell activity and potentially
24 compromising uterine vascularization. *Int. J. Obes.* **38**, 766–774 (2014).
- 25 25. Hayes, E. K. *et al.* Trophoblast invasion and blood vessel remodeling are altered in a rat model
26 of lifelong maternal obesity. *Reprod. Sci.* **21**, 648–57 (2014).
- 27 26. Ratsep, M. T. *et al.* Uterine natural killer cells: supervisors of vasculature construction in early
28 decidua basalis. *Reproduction* **149**, R91–R102 (2014).
- 29 27. Perdu, S. *et al.* Maternal obesity drives functional alterations in uterine NK cells. *JCI Insight* **1**,
30 (2016).
- 31 28. Alter, G., Malenfant, J. M. & Altfeld, M. CD107a as a functional marker for the identification of

Castellana *et al*

- 1 natural killer cell activity. *J. Immunol. Methods* (2004).doi:10.1016/j.jim.2004.08.008
- 2 29. Wang, R., Jaw, J. J., Stutzman, N. C., Zou, Z. & Sun, P. D. Natural killer cell-produced IFN-
3 and TNF- induce target cell cytolysis through up-regulation of ICAM-1. *J. Leukoc. Biol.* **91**,
4 299–309 (2012).
- 5 30. Hanna, J. *et al.* Decidual NK cells regulate key developmental processes at the human fetal-
6 maternal interface. doi:10.1038/nm1452
- 7 31. Lash, G. E. *et al.* Expression of angiogenic growth factors by uterine natural killer cells during
8 early pregnancy. *J. Leukoc. Biol.* **80**, 572–80 (2006).
- 9 32. Kopcow, H. D. *et al.* Human decidual NK cells form immature activating synapses and are not
10 cytotoxic. *Proc. Natl. Acad. Sci. U. S. A.* **102**, 15563–15568 (2005).
- 11 33. Fukui, A. *et al.* Correlation between natural cytotoxicity receptors and intracellular cytokine
12 expression of peripheral blood NK cells in women with recurrent pregnancy losses and
13 implantation failures. *Am. J. Reprod. Immunol.* **62**, 371–380 (2009).
- 14 34. Moffett, A., Chazara, O., Colucci, F. & Johnson, M. H. Variation of maternal KIR and fetal
15 HLA-C genes in reproductive failure: too early for clinical intervention. *Reprod. Biomed. Online*
16 (2016).doi:10.1016/j.rbmo.2016.08.019
- 17 35. Xiong, S. *et al.* Maternal uterine NK cell-activating receptor KIR2DS1 enhances placentation. *J.*
18 *Clin. Invest.* **123**, 4264–4272 (2013).
- 19 36. Hiby, S. E. *et al.* Maternal activating KIRs protect against human reproductive failure mediated
20 by fetal HLA-C2. *J. Clin. Invest.* (2010).doi:10.1172/JCI43998
- 21 37. Middleton, D. & Gonzelez, F. The extensive polymorphism of KIR genes. *Immunology* **129**, 8–
22 19 (2010).
- 23 38. Single, R. M. *et al.* Global diversity and evidence for coevolution of KIR and HLA. *Nat. Genet.*
24 **39**, 1114–9 (2007).
- 25 39. Sharkey, A. M. *et al.* Killer Ig-like receptor expression in uterine NK cells is biased toward
26 recognition of HLA-C and alters with gestational age. *J. Immunol.* **181**, 39–46 (2008).
- 27 40. Yawata, M. *et al.* Roles for HLA and KIR polymorphisms in natural killer cell repertoire
28 selection and modulation of effector function. *J. Exp. Med.* **203**, 633–45 (2006).
- 29 41. Martin Maiers, Loren Gragert, W. K. High-resolution HLA alleles and haplotypes in the United
30 States population. *Hum. Immunol.* **68**, 779–788 (2007).
- 31 42. Chazara, O., Xiong, S. & Moffett, A. Maternal KIR and fetal HLA-C: a fine balance. *J. Leukoc.*

Castellana *et al*

- 1 *Biol.* **90**, 703–16 (2011).
- 2 43. Pittari, G. *et al.* NK Cell Tolerance of Self-Specific Activating Receptor KIR2DS1 in
3 Individuals with Cognate HLA-C2 Ligand. *J. Immunol.* **190**, 4650–4660 (2013).
- 4 44. Sivori, S. *et al.* Natural killer cells expressing the KIR2DS1-activating receptor efficiently kill T-
5 cell blasts and dendritic cells: implications in haploidentical HSCT. *Blood* **117**, 4284–92 (2011).
- 6 45. Rose, M. J. J., Brooks, A. G., Stewart, L. A., Nguyen, T. H. & Schwarzer, A. P. Killer Ig-Like
7 Receptor Ligand Mismatch Directs NK Cell Expansion In Vitro. *J. Immunol.* **183**, 4502–4508
8 (2009).
- 9 46. Author, R. *et al.* Recognition of peptide-MHC class I complexes by activating killer
10 immunoglobulin-like receptors. *Proc. Natl. Acad. Sci. U. S. A.* **102**, 13224–9 (2005).
- 11 47. Apps, R. *et al.* Human leucocyte antigen (HLA) expression of primary trophoblast cells and
12 placental cell lines, determined using single antigen beads to characterize allotype specificities
13 of anti-HLA antibodies. *Immunology* **127**, 26–39 (2009).
- 14 48. Hiby, S. E. *et al.* Combinations of Maternal KIR and Fetal HLA-C Genes Influence the Risk of
15 Preeclampsia and Reproductive Success. *J. Exp. Med.* **200**, 957–965 (2004).
- 16 49. Chapel, A. *et al.* Peptide-specific engagement of the activating NK cell receptor KIR2DS1. *Sci.*
17 *Rep.* **7**, 2414 (2017).
- 18 50. Gaillard, R. *et al.* Risk factors and outcomes of maternal obesity and excessive weight gain
19 during pregnancy. *Obesity* **21**, 1046–1055 (2013).
- 20 51. Poggi, A. *et al.* Immunomodulation Regulation of cd T cell survival by soluble HLA-I :
21 Involvement of CD8 and activating killer Ig-like receptors. 2670–2678
22 (2005).doi:10.1002/eji.200526177
- 23 52. Geach, T. Obesity: Methylation a consequence not a cause. *Nat. Rev. Endocrinol.* **13**, 127–127
24 (2017).
- 25 53. Schilham, M. W., Egeler, R. M. & Tol, M. J. D. Van Role of NKG2D , DNAM - 1 and natural
26 cytotoxicity receptors in cytotoxicity toward rhabdomyosarcoma cell lines mediated by resting
27 and IL - 15 - activated human natural killer cells. 573–583 (2015).doi:10.1007/s00262-015-
28 1657-9
- 29 54. Viel, S. *et al.* Alteration of Natural Killer cell phenotype and function in obese individuals. *Clin.*
30 *Immunol.* 5–10 (2016).doi:10.1016/j.clim.2016.01.007
- 31 55. Siewiera, J. *et al.* Human Cytomegalovirus Infection Elicits New Decidual Natural Killer Cell

Castellana *et al*

- 1 Effector Functions. *PLoS Pathog.* **9**, (2013).
- 2 56. Costa, H. El *et al.* Critical and differential roles of NKp46- and NKp30-activating receptors
3 expressed by uterine NK cells in early pregnancy. *J. Immunol.* **181**, 3009–3017 (2008).
- 4 57. Felker AM, C. B. Natural cytotoxicity receptor 1 in mouse uNK cell maturation and function.
5 *Mucosal Immunol.* (2017).doi:10.1038/mi.2016.126
- 6 58. Siewiera, J. *et al.* Natural cytotoxicity receptor splice variants orchestrate the distinct functions
7 of human natural killer cell subtypes. *Nat. Commun.* **6**, 10183 (2015).
- 8 59. Nejabati, H. R., Latifi, Z., Ghasemnejad, T., Fattahi, A. & Nouri, M. Placental growth factor
9 (PlGF) as an angiogenic/inflammatory switcher: lesson from early pregnancy losses. *Gynecol.*
10 *Endocrinol.* **3590**, 1–7 (2017).
- 11 60. Falco, M. *et al.* Combined Genotypic and Phenotypic Killer Cell Ig-Like Receptor Analyses
12 Reveal KIR2DL3 Alleles Displaying Unexpected Monoclonal Antibody Reactivity:
13 Identification of the Amino Acid Residues Critical for Staining. *J. Immunol.* **185**, 433–441
14 (2010).
- 15 61. S.E. Hiby, L. Regan, W. Lo, L. Farrell, M. Carrington, A. M. Association of maternal killer-cell
16 immunoglobulin-like receptors and parental HLA-C genotypes with recurrent miscarriage. *Hum*
17 *Reprod* **4**, 972–976 (2008).
- 18
- 19

Table 1 Clinical characteristics

	Average age	IQR Age	Average GA	IQR GA	Average BMI	IQR BMI
Lean women (N=104)	27.84	23 to 33	7.7	6.5 to 8.5	22.05	20.79 to 23.49
Obese women (N=80)	28.36	23 to 33 <i>P</i> = 0.32	8.5	7.1 to 9.6 <i>P</i> = 0.003	34.56	31.62 to 37.04 <i>P</i> < 0.0001

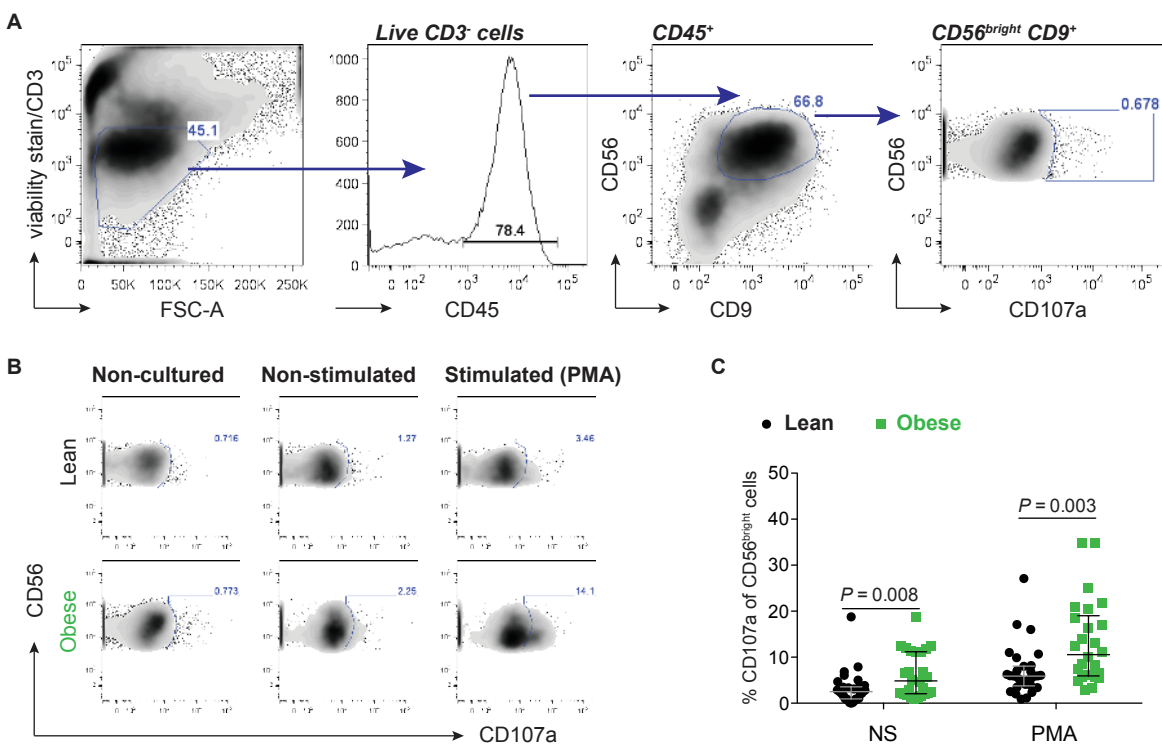
Castellana *et al*

1 **FIGURE LEGENDS**

2 **Figure 1.** Maternal obesity associates with heightened uNK activity. **(a)** Flow cytometry gating
3 strategy used to analyze degranulation in uNK defined as CD56^{bright}/CD9⁺ cells. **(b)** Representative
4 flow cytometry plots of CD107a in uNK cells at baseline (non-cultured), or cultured in the absence
5 (non-stimulated) or presence (stimulated) of PMA/ionomycin for 4 hours. Baseline measurements were
6 determined from *ex vivo* non-cultured uNK. Percentages of CD56^{bright}/CD9⁺ cells positive for CD107a
7 are indicated within the plots. **(c)** Scatter plots depicting percentages of CD56^{bright}/CD9⁺ uNK from lean
8 (black circles; n = 30) and obese (green squares; n = 26) expressing CD107a following
9 PMA/ionomycin treatment. *P* values (nonparametric two-tailed Mann-Whitney *t* test) are shown.

10

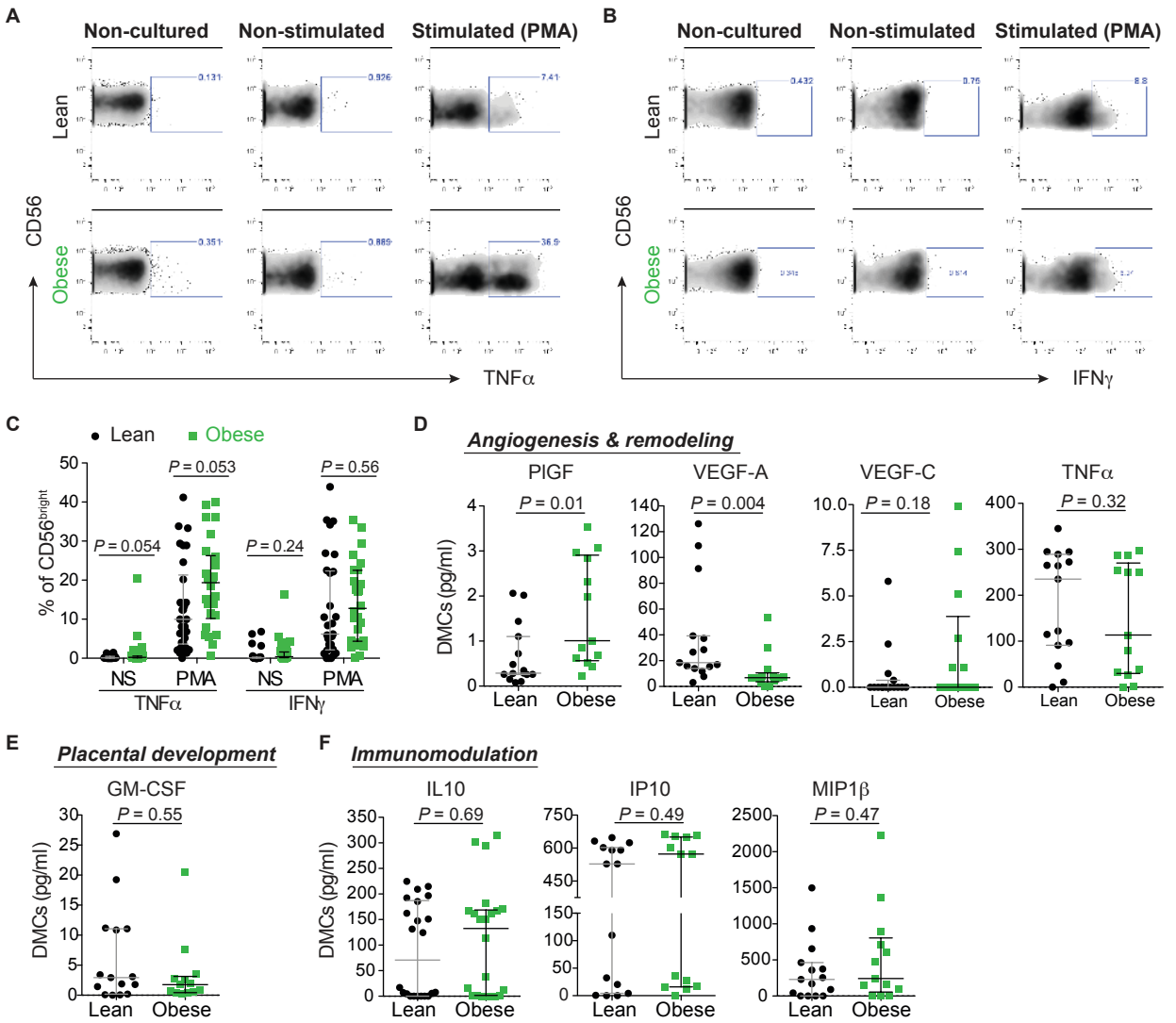
Figure 1



Castellana *et al*

1 **Figure 2.** Maternal obesity leads to alterations in uNK cytokine production. Representative flow
2 cytometry plots of **(a)** TNF α and **(b)** IFN γ expression in uNK from lean (n = 30) and obese (n = 26)
3 women at baseline (non-cultured) or cultured in the absence (non-stimulated) or presence (stimulated)
4 of PMA/ionomycin for 4 hours. Percentages of CD56^{bright} cells positive for TNF α and IFN γ are
5 indicated within plots. **(c)** Scatter plots showing median and IQR values of proportions of CD56^{bright}
6 uNK expressing TNF α and IFN γ from lean (black circles) and obese (green squares) women. Scatter
7 plots depicting levels of secreted **(d)** angiogenic and remodeling [PIGF, VEGF-A, VEGF-C, TNF α], **(e)**
8 placental development [GM-CSF], and **(f)** immunomodulation [IL10, IP10, MIP1 β] factors from
9 decidual leukocytes (>60% uNK) derived from lean (black; n = 15) and obese (green; n = 13) women.
10 *P* values (nonparametric two-tailed Mann-Whitney *t* test) are shown.
11

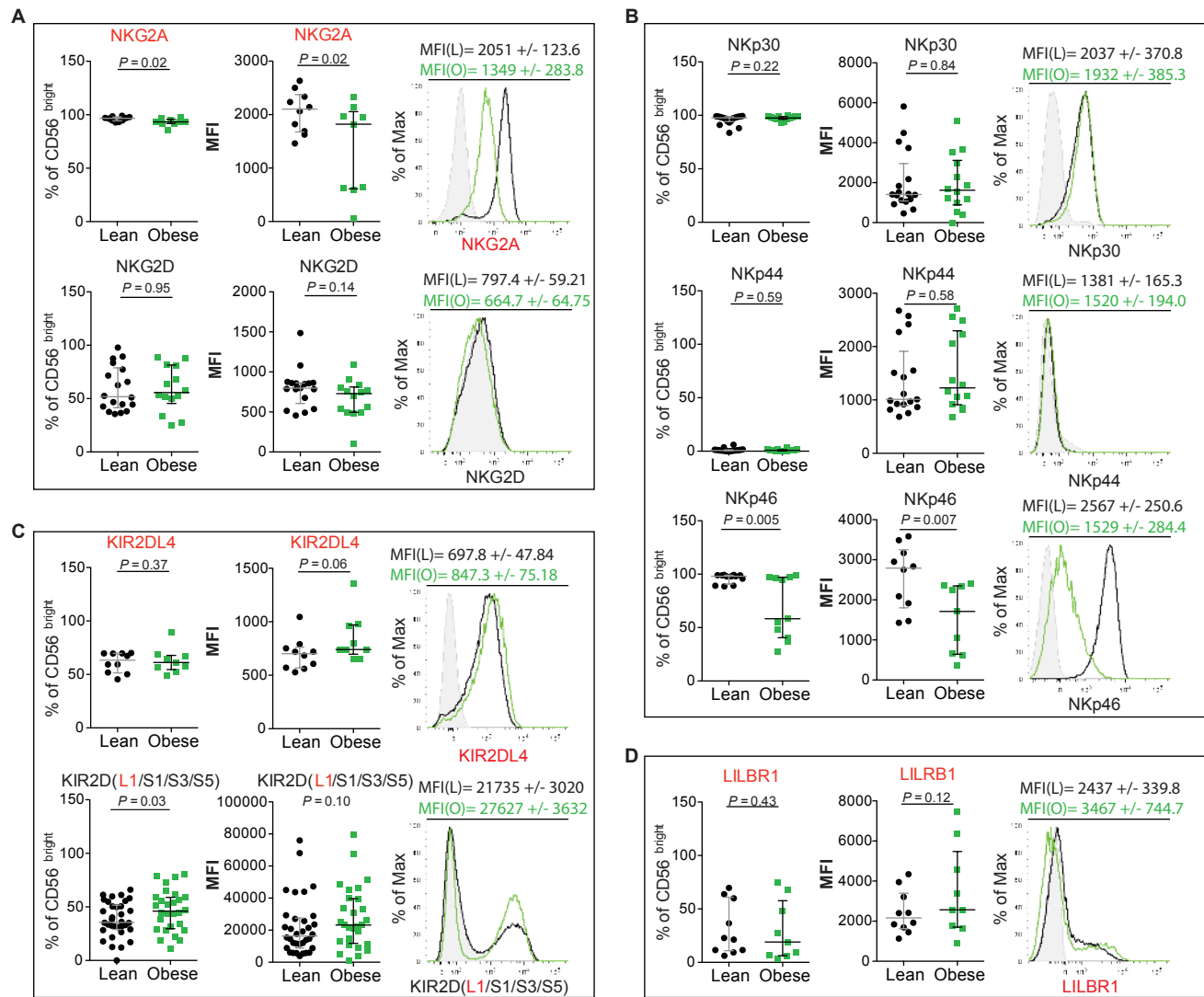
Figure 2



Castellana *et al*

1 **Figure 3.** Maternal obesity correlates with changes in activating and inhibitory Natural Killer
2 Receptors (NKR). Scatter plots show flow cytometry-derived proportions of uNK (gated on CD56^{bright}
3 cells) expressing **(a)** inhibitory NKG2A (n = 9 lean vs 10 obese) and activating NKG2D (n =14 lean vs
4 18 obese) CD94/NKG2 family receptors, **(b)** activating natural cytotoxicity receptors NKp30 (n = 14
5 lean vs 18 obese), NKp44 (n = 14 lean vs 18 obese), and NKp46 (n = 11 lean vs 12 obese), **(c)**
6 inhibitory KIR2DL4 (n = 9 lean vs 10 obese) and KIR2DS1/S3/S5 (n = 28 lean vs 34 obese) killer-cell
7 immunoglobulin-like receptor (KIR)2D subfamily receptors, and **(d)** the leukocyte immunoglobulin-
8 like receptor LILRB1 (n = 9 lean vs 10 obese), as well as their surface expression levels (MFIs). On the
9 right of each scatter plot, representative histograms display uNK surface levels of individual NKRs.
10 Grey area indicates unstained control, where black and green histograms indicate representative lean
11 and obese subject expression levels. MFIs and standard deviation (SD) of lean (L) and obese (O)
12 samples are shown above the histogram. Activating (black) and inhibitory (red) receptors are color-
13 coded. *P* values (nonparametric two-tailed Mann-Whitney *t* test) are shown.
14

Figure 3

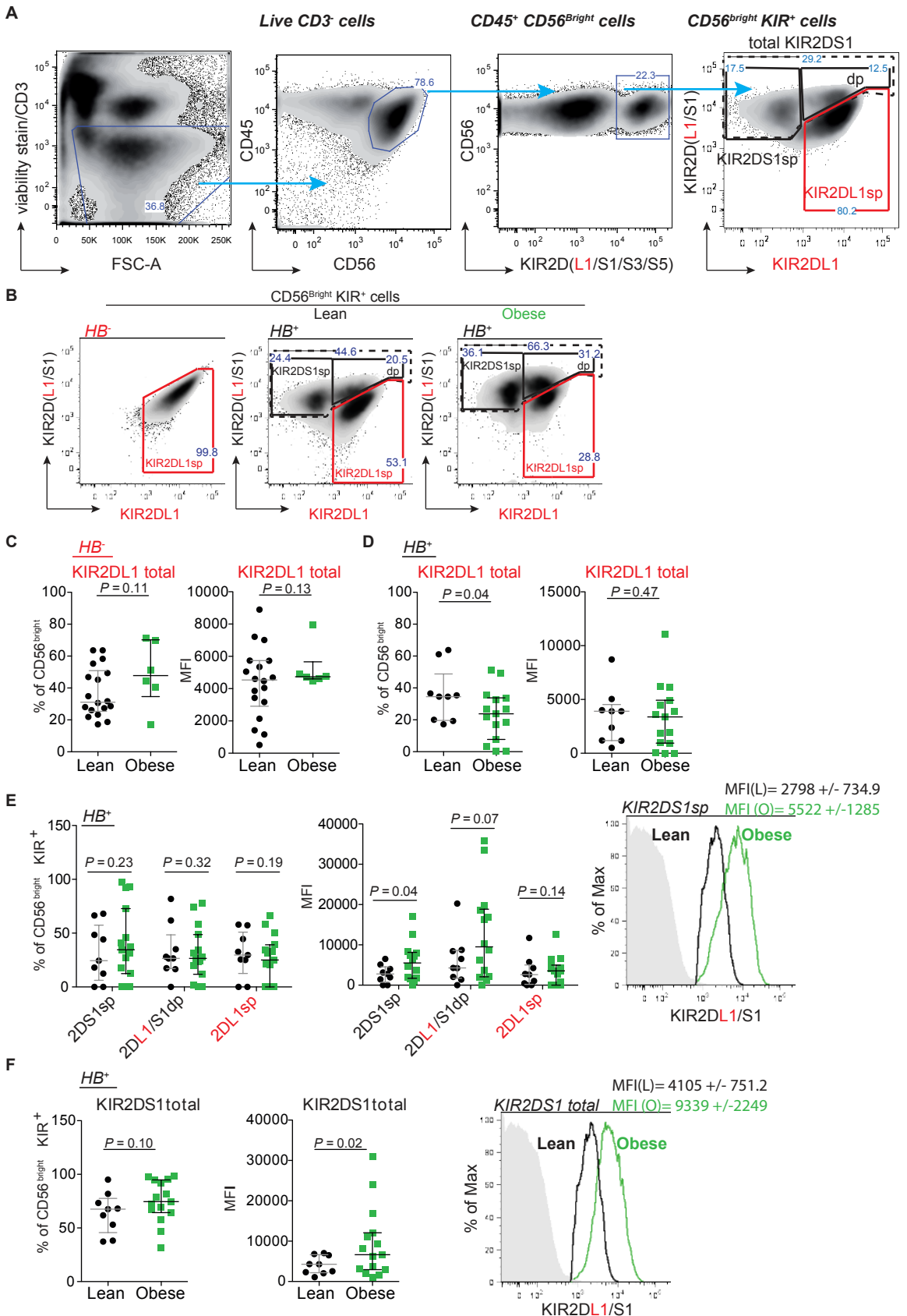


Castellana *et al*

1 **Figure 4.** Obesity links with imbalances in uNK KIR2DS1/L1 expression. **(a)** Shown is the flow
2 cytometry gating strategy for KIR2DL1/S1 analysis. CD3/FVD780 exclusion identifies live CD3⁺ cells
3 that are further selected on CD45, CD56, and KIR2D(L1/S1/S3/S5) positivity. Within the KIR⁺
4 population, uNK are analyzed for KIR2DS1 and KIR2DL1 expression using antibodies directed against
5 KIR2DL1 and KIR2DS1/L1 where three subsets (KIR2DS1sp, KIR2DL1/S1dp, KIR2DL1sp; sp,
6 single-positive; dp, double-positive) are identified. **(b)** Representative flow cytometry plots of
7 KIR2DS1 and KIR2DL1 uNK populations from a KIR2DS1⁻ haplotype B negative subject (HB⁻; left)
8 and KIR2DS1⁺ haplotype B positive (HB⁺) subjects from lean (n = 9) and obese (n = 15) women. The
9 percentage of cells is shown in each gated area. **(c-d)** Scatter plots show total KIR2DL1 proportions of
10 uNK (gated on CD56^{bright} cells) and expression levels (MFI) from HB⁻ and HB⁺ lean and obese women.
11 **(e)** Scatter plots show KIR2DS1 proportions (2DS1sp, 2DL1/S1dp, and 2DL1sp) and surface levels
12 (MFI) in uNK (gated on CD56^{bright}/KIR⁺) in HB⁺ lean and obese women. Representative flow
13 cytometry histogram (right) shows KIR2DS1 levels (MFI) in KIR2DS1sp uNK. **(f)** Percentage and
14 expression of total KIR2DS1 (combined KIR2DS1sp and KIR2DL1/S1dp populations) in HB⁺ lean and
15 obese subjects. MFI and standard deviation (SD) of KIR2DS1 is shown: solid grey area indicates the
16 fluorescence minus one (FMO) baseline signal; black and green histograms indicate 2DS1 MFI in lean
17 and green subjects. *P* values (nonparametric two-tailed Mann-Whitney *t* test) are shown.

18

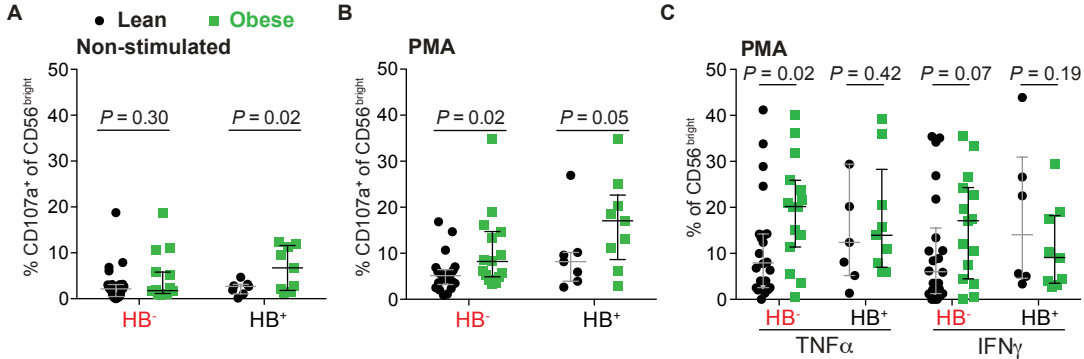
Figure 4



Castellana *et al*

1 **Figure 5.** Maternal obesity and KIR haplotype interact to potentiate uNK activity. **(a)** Scatter plots
2 show flow cytometry-derived proportions of CD107a cells in **(a)** non-stimulated and **(b)** PMA-
3 stimulated uNK cultures from HB^{-/+} lean (black: HB⁻ n = 22; HB⁺ n = 7) and obese (green: HB⁻ n = 15;
4 HB⁺ n = 9) subjects. **(c)** Scatter plots show proportions of uNK from HB^{-/+} lean and obese subjects
5 producing TNF α and IFN γ following 4 hours of PMA stimulation. *P* values (nonparametric two-tailed
6 Mann-Whitney *t* test) are shown.
7

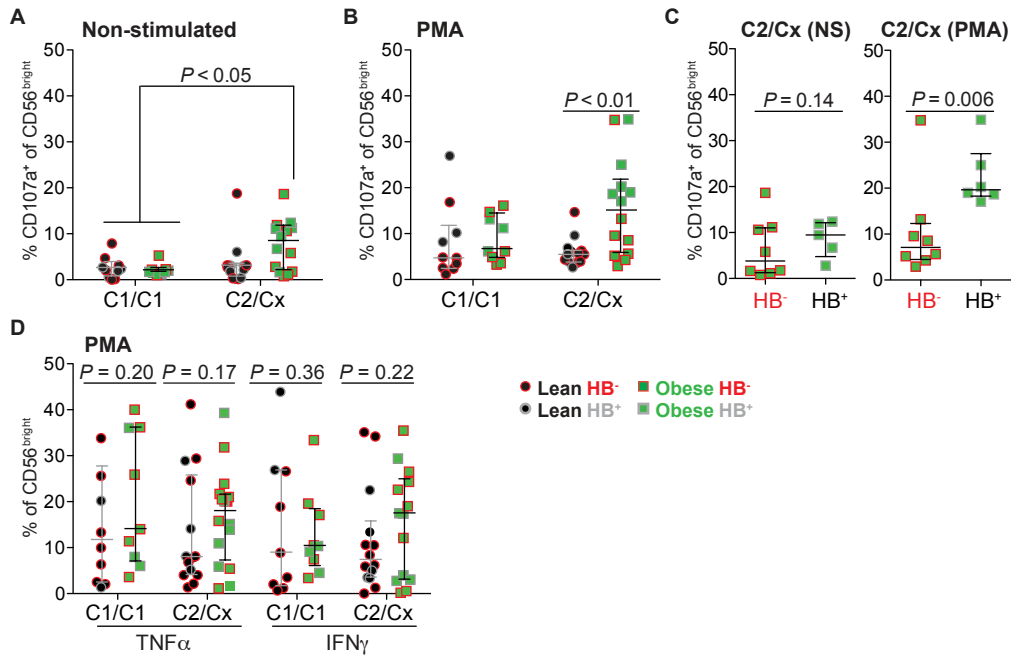
Figure 5



Castellana *et al*

1 **Figure 6.** Maternal HLA-C2 and KIR2DS1 correlate with an increase in uNK activity. Scatter plots
2 show proportions of uNK from HB^{-/+} and HLA-C1/C2 genotyped lean (HB⁻ n = 6; HB⁺ n = 8) and
3 obese (HB⁻ n = 8; HB⁺ n = 6) women expressing CD107a following **(a)** no treatment (non-stimulated)
4 and **(b)** PMA/ionomycin (PMA) stimulation. Cx indicates that the individual is either HLA-C2
5 homozygous or heterozygous. uNK from lean or obese subjects are indicated as black circles or green
6 squares, while HB haplotype are indicated as red outline (HB⁻) or grey outline (HB⁺). **(c)** As above,
7 except scatter plots show comparisons of CD107a⁺ proportions of uNK from only HB⁻ or HB⁺ obese
8 subjects. **(d)** Proportions of TNF α ⁺ and IFN γ ⁺ uNK cells from HLA-C1/C2 and HB^{-/+} genotyped lean
9 and obese women after PMA treatment. NS = non-stimulated. *P* values (One-way ANOVA-Dunn's
10 multiple comparisons- [panels **a,b**] test and nonparametric two-tailed Mann-Whitney *t* test [panels **c,d**])
11 are shown.
12

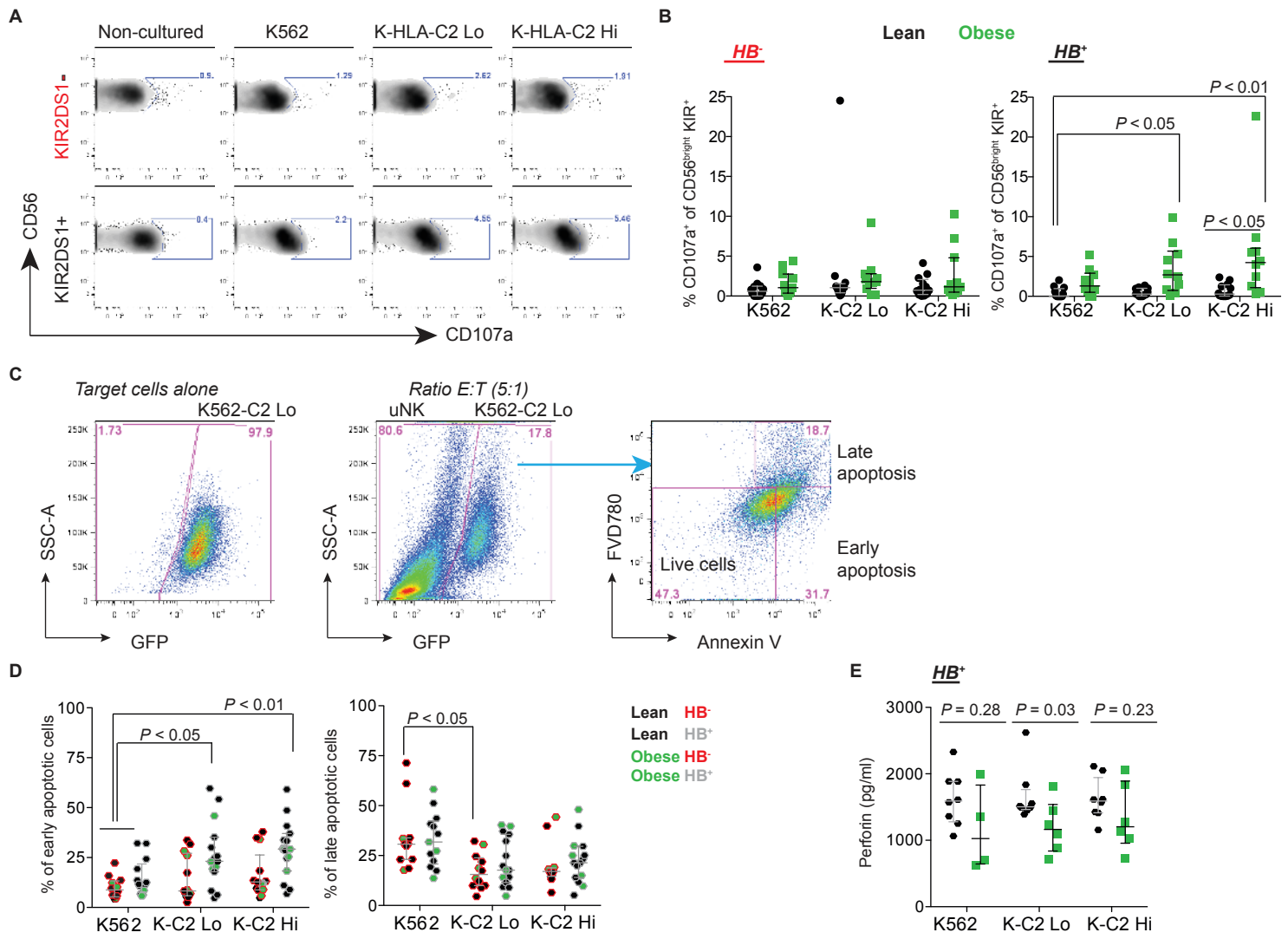
Figure 6



Castellana *et al*

1 **Figure 7.** HLA-C2 potentiates heightened activity in KIR2DS1⁺ uNK from obese women. **(a)**
2 Representative flow cytometry plots showing proportions of uNK from lean (HB⁻ n = 13; HB⁺ n= 12)
3 and obese (HB⁻ n= 5; HB⁺ n= 10) women expressing CD107a following 4 hours of co-culture with
4 K562 target cells (5:1 E/T) ectopically expressing HLA-C2-eGFP (HLA-Cw*0602). K562 clones
5 expressing ectopic HLA-C2 at low (K-C2 Lo) or high (K-C2 Hi) levels were established; K562 cells
6 transduced with an empty vector (K562) served as a control. **(b)** Scatter plots show proportions of
7 CD56^{bright}/KIR⁺ uNK from HB⁻ (left) and HB⁺ (right) lean and obese women expressing CD107a. **(c)**
8 Shown is the gating strategy for analyzing early and late apoptosis in K562 cells co-cultured with
9 decidual leukocytes (> 60% uNK) for 4 hours. Early and late apoptosis in K562 cells is measured by
10 annexin V and fixable viability dye (FVD) single or dual positivity. **(d)** Scatter plots depict the
11 proportion of early (left) and late (right) apoptotic K562 target cells following co-culture with HB⁻ (red
12 outline; n = 13) or HB⁺ (grey outline; n = 13) uNK from lean (black filled) or obese (green filled)
13 women. **(e)** Scatter plot show levels of secreted perforin from decidual leukocytes from lean and obese
14 women in response to co-culture with HLA-C2-expressing K562 target cells. One-way ANOVA
15 (Dunn's multiple comparisons test) were performed for panels **(b-d)**. *P* values (nonparametric two-
16 tailed Mann-Whitney *t* test) are shown for panel **(e)**.
17

Figure 7



Castellana *et al*

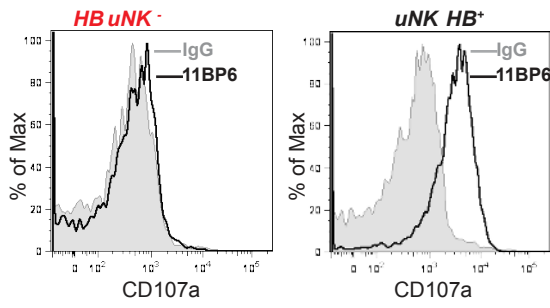
1 **Figure 8.** Targeted KIR2DL1/S1 activation differentially controls uNK cytokine production in lean and
2 obese women. **(a)** Representative histograms show CD107a expression in HB⁻ and HB⁺ uNK following
3 4 hours of KIR2DL1/S1 antibody cross-linking (via clone 11PB6); IgG1 was used a control KIR⁺ cells
4 by flow cytometry. **(b-d)** Scatter plots showing quantification of secreted factors within conditioned
5 media generated from HB⁺ uNK from lean (n = 8) and obese (n = 8) women following KIR2DL1/S1
6 antibody cross-linking. Secreted factors include **(b)** PlGF, VEGF-A, VEGF-C, TNF α , **(c)** GM-CSF,
7 and **(d)** IL10, IP10, and MIP1 β . Significant interactions following crosslinking between uNK from lean
8 and obese subjects were determined via paired repeated measures statistics (two-way ANOVA). Int =
9 Interaction; Ab = 11BP6 Antibody.

10

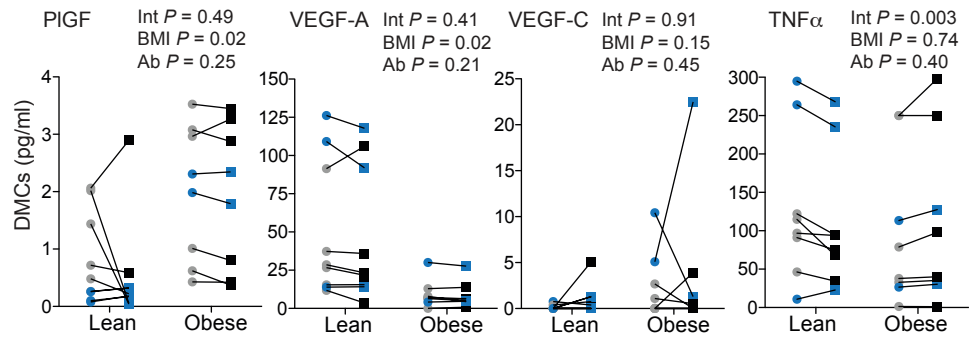
11

Figure 8

A

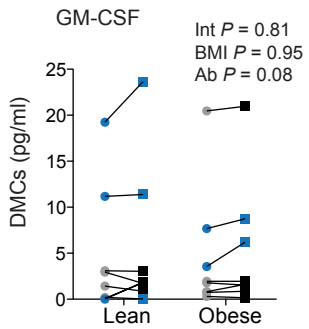


B Angiogenesis and remodeling



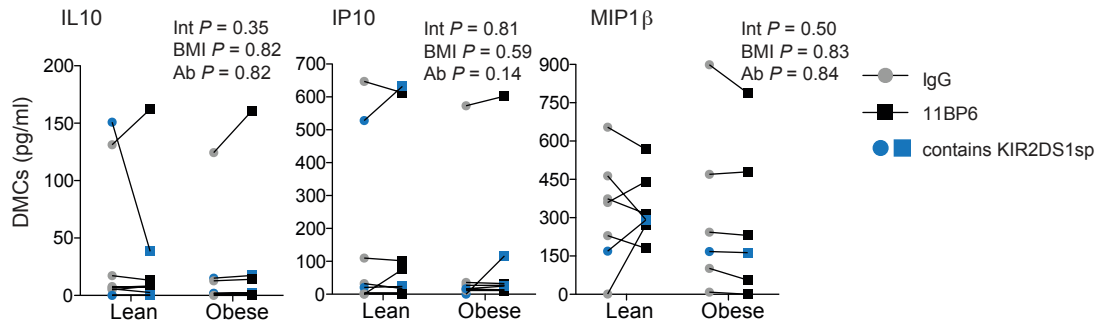
C

Placental development



D

Immunomodulation



Legend:
 ● IgG
 ■ 11BP6
 ●■ contains KIR2DS1sp