

**MATHEMATICAL PROGRAMS WITH CARDINALITY
CONSTRAINTS: REFORMULATION BY
COMPLEMENTARITY-TYPE CONDITIONS AND A
REGULARIZATION METHOD**

Oleg P. Burdakov¹, Christian Kanzow², and Alexandra Schwartz³

¹Linköping University
Department of Mathematics
SE-581 83 Linköping
Sweden
e-mail: oleg.burdakov@liu.se

²University of Würzburg
Institute of Mathematics
Emil-Fischer-Str. 30
97074 Würzburg
Germany
e-mail: kanzow@mathematik.uni-wuerzburg.de

³Technical University of Darmstadt
Graduate School Computational Engineering
Dolivostraße 15
64293 Darmstadt
Germany
e-mail: schwartz@gsc.tu-darmstadt.de

January 19, 2015

Abstract

Optimization problems with cardinality constraints are very difficult mathematical programs which are typically solved by global techniques from discrete optimization. Here we introduce a mixed-integer formulation whose standard relaxation still has the same solutions (in the sense of global minima) as the underlying cardinality-constrained problem; the relation between the local minima is also discussed in detail. Since our reformulation is a minimization problem in continuous variables, it allows to apply ideas from that field to cardinality-constrained problems. Here, in particular, we therefore also derive suitable stationarity conditions and suggest an appropriate regularization method for the solution of optimization problems with cardinality constraints. This regularization method is shown to be globally convergent to a Mordukhovich-stationary point. Extensive numerical results are given to illustrate the behavior of this method.

Key Words: Cardinality constraints, global minima, local minima, stationary points, M-stationarity, relaxation, regularization method

1 Introduction

We consider the cardinality-constrained optimization problem

$$\min_x f(x) \quad \text{s.t.} \quad x \in X, \|x\|_0 \leq \varkappa, \quad (1)$$

where $f : \mathbb{R}^n \rightarrow \mathbb{R}$ denotes a continuously differentiable function, $\varkappa > 0$ is a given natural number, $\|x\|_0$ denotes the cardinality of the vector $x \in \mathbb{R}^n$, i.e. the number of its nonzero elements, and $X \subseteq \mathbb{R}^n$ is a subset determined by any further constraints on x . Throughout this manuscript, we assume that $\varkappa < n$ since otherwise the cardinality constraint would not constrain x .

The cardinality-constrained optimization problem (1) has a wide range of applications including portfolio optimization problems with constraints on the number of assets [5], the subset selection problem in regression [18], or the compressed sensing technique used in signal processing [8]. The optimization problem (1) is difficult to solve mainly due to the fact that it involves the cardinality constraint defined by the mapping $\|\cdot\|_0$ which, despite its notation that is quite common in the community, is not a norm, and neither convex nor continuous.

The difficulty to solve problem (1) is also reflected by the fact that it can be reformulated as a mixed-integer problem. However, even for simple instances, just testing feasibility of the constraints in (1) is known to be NP-complete [5]. Nevertheless, the mixed-integer formulation of the cardinality-constrained problem is the basis for the development of many algorithms which use ideas and techniques from discrete optimization in order to find the exact or an approximate solution of the problem (1). We refer the reader to [4, 5, 9, 19, 24, 29, 30] and references therein for a couple of different ideas.

The cardinality-constrained problem (1) is also closely related to the sparse optimization problem where the term $\|x\|_0$ is typically a part of the objective function served for enhancing sparsity of produced solutions. A standard technique then is to replace this term by the l_1 -norm $\|x\|_1$ which gives rise to a convex optimization problem (provided that all other ingredients are convex) and for which a global minimum can be computed by standard techniques. In general, however, this only yields an approximation of the sparsest solution.

The very recent paper [11] uses a different basic idea and presents a reformulation of the sparse optimization problem as a standard nonlinear program with complementarity-type constraints, not involving any integer variables. The so-called “half complementarity” formulation used in that paper corresponds to our reformulation of the cardinality-constrained problem (1). Our derivation of this reformulation is different from the one used in [11] and provides some insights in itself: We first use another mixed-integer formulation of the cardinality-constrained problem employing some binary variables and then show that the standard relaxation of these binary variables has the nice property that its solutions are still the same as the solutions of the original cardinality-constrained problem (1). We presented some preliminary results on this reformulation without proofs in [6]. Apart from this derivation, the remaining part of our paper is, in any case, different from [11]. Nonetheless, some results from the present paper can be translated to sparse optimization problems. A paper discussing the corresponding results and some interesting differences is currently under preparation.

We should also say that the NLP-reformulation used in [11] and also the one introduced here yield a nonlinear program whose structure is very similar to a mathematical program with complementarity constraints (MPCC), cf. [17, 21]. In fact, it is possible to further rewrite the NLP-reformulation in such a way that one really gets an MPCC (this is the “full complementarity” formulation in [11]). Hence, in principle, one might try to apply the full machinery known from MPCCs. However, it turns out that, besides the usual constraint qualifications, also the MPCC-tailored constraint qualifications are typically violated in this case. Despite this negative observation, we show that our current approach has some stronger properties that are not exhibited in the MPCC-context. We comment on this later within this paper.

The organization is as follows: We begin with some background material in Section 2. We then present our NLP-reformulation of the cardinality-constrained optimization problem (1) and discuss in detail the relation between the global and local minima in Section 3. Stationary conditions of our NLP-reformulation are discussed separately in Section 4; here the difficulty is that standard constraint qualifications are usually violated by our NLP-reformulation, nevertheless, it is shown that the usual KKT-conditions are necessary optimality conditions for the case of a polyhedral convex set X , whereas this is not true even if X is convex and satisfies the Slater constraint qualification. The previous discussion motivates to consider a suitable regularization method for the solution of the cardinality-constrained problem (1) which we describe and analyze in Section 5. Extensive numerical results are presented in Section 6, and we conclude with some final remarks in Section 7.

Notation: The vector $e := (1, \dots, 1)^T \in \mathbb{R}^n$ denotes the all one vector, whereas $e_i := (0, \dots, 0, 1, 0, \dots, 0)^T \in \mathbb{R}^n$ is the i -th unit vector. With $B_r(a) := \{x \mid \|x - a\|_2 \leq r\}$ we indicate the closed (Euclidean) ball of radius $r > 0$ centered in a given point $a \in \mathbb{R}^n$. An inequality $x \geq 0$ for some vector x is defined componentwise. Finally, $\text{supp}(x) := \{i \mid x_i \neq 0\}$ denotes the support of a given vector x .

2 Preliminaries

In this section, we recall some basic definitions related to standard nonlinear programs that will play some role in our subsequent analysis.

To this end, consider the optimization problem

$$\begin{aligned} \min f(x) \quad \text{s.t.} \quad & g_i(x) \leq 0 \quad \forall i = 1, \dots, m, \\ & h_i(x) = 0 \quad \forall i = 1, \dots, p \end{aligned} \tag{2}$$

with some continuously differentiable functions $f, g_i, h_i : \mathbb{R}^n \rightarrow \mathbb{R}$.

Definition 2.1. *A vector $x^* \in \mathbb{R}^n$ is called a stationary point of the nonlinear program (2) if there exist Lagrange multipliers $\lambda \in \mathbb{R}^m$ and $\mu \in \mathbb{R}^p$ such that the following KKT (Karush-Kuhn-Tucker) conditions hold:*

$$\begin{aligned} \nabla_x L(x^*, \lambda, \mu) &= 0, \\ \lambda_i \geq 0, \quad g_i(x^*) \leq 0, \quad \lambda_i g_i(x^*) &= 0 \quad \forall i = 1, \dots, m, \\ h_i(x^*) &= 0 \quad \forall i = 1, \dots, p, \end{aligned}$$

where $L(x, \lambda, \mu) := f(x) + \lambda^T g(x) + \mu^T h(x)$ denotes the Lagrangian of the optimization problem (2).

Given a local minimum x^* of (2) such that certain conditions are satisfied at x^* , it is possible to show that x^* is also a stationary point in the sense of Definition 2.1. The conditions required here are called *constraint qualifications* (CQ). There are a number of different CQs known for nonlinear programs, and we recall some of them in the following discussion. To this end, let $X := \{x \mid g(x) \leq 0, h(x) = 0\}$ be the feasible set of (2), and let us introduce some cones that play an important role in the definition of some of these constraint qualifications: The set

$$T_X(x^*) := \left\{ d \in \mathbb{R}^n \mid \exists \{x^k\} \subseteq X \exists \{t_k\} \downarrow 0 : x^k \rightarrow x^* \text{ and } d = \lim_{k \rightarrow \infty} \frac{x^k - x^*}{t_k} \right\}$$

is called the (*Bouligand*) *tangent cone* of the set X at the point $x^* \in X$. The corresponding *linearization cone* of X at $x^* \in X$ is given by

$$L_X(x^*) := \left\{ d \in \mathbb{R}^n \mid \nabla g_i(x^*)^T d \leq 0 \ (i : g_i(x^*) = 0), \ \nabla h_i(x^*)^T d = 0 \ (i = 1, \dots, p) \right\}.$$

Note that the inclusion $T_X(x^*) \subseteq L_X(x^*)$ always holds.

Finally, we recall that the *polar cone* of an arbitrary cone $C \subseteq \mathbb{R}^n$ is defined by

$$C^* := \{w \in \mathbb{R}^n \mid w^T d \leq 0 \ \forall d \in C\}.$$

Using this notation, we can state some of the more prominent constraint qualifications.

Definition 2.2. *Let x^* be a feasible point of the nonlinear program (2). Then we say that x^* satisfies the*

- (a) *linear independence CQ (LICQ) if the gradient vectors*

$$\nabla g_i(x^*) \ (i : g_i(x^*) = 0), \ \nabla h_i(x^*) \ (i = 1, \dots, p)$$

are linearly independent;

- (b) *Mangasarian-Fromovitz CQ (MFCQ) if the gradient vectors $\nabla h_i(x^*)$ ($i = 1, \dots, p$) are linearly independent and, in addition, there exists a vector $d \in \mathbb{R}^n$ such that $\nabla h_i(x^*)^T d = 0$ ($\forall i = 1, \dots, p$) and $\nabla g_i(x^*)^T d < 0$ ($\forall i : g_i(x^*) = 0$) hold;*

- (c) *constant rank CQ (CRCQ) if for any subsets $I_1 \subseteq \{i \mid g_i(x^*) = 0\}$ and $I_2 \subseteq \{1, \dots, p\}$ such that the gradient vectors*

$$\nabla g_i(x) \ (i \in I_1), \ \nabla h_i(x) \ (i \in I_2)$$

are linearly dependent in $x = x^$, they remain linearly dependent for all x in a neighborhood (in \mathbb{R}^n) of x^* ;*

- (d) *constant linear dependence condition (CPLD) if for any subsets $I_1 \subseteq \{i \mid g_i(x^*) = 0\}$ and $I_2 \subseteq \{1, \dots, p\}$ such that the gradient vectors*

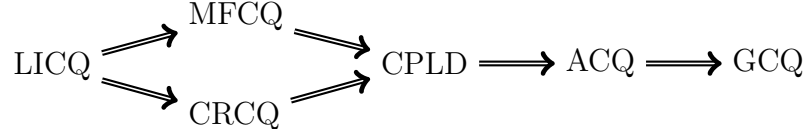
$$\nabla g_i(x) \ (i \in I_1) \quad \text{and} \quad \nabla h_i(x) \ (i \in I_2)$$

are positive-linear dependent in $x = x^$ (i.e. there exist multipliers $(\alpha, \beta) \neq 0$ with $\alpha \geq 0$ and $\sum_{i=1}^m \alpha_i \nabla g_i(x^*) + \sum_{i=1}^p \beta_i \nabla h_i(x^*) = 0$), they are linearly dependent for all x in a neighborhood (in \mathbb{R}^n) of x^* ;*

(e) Abadie CQ (ACQ) if $T_X(x^*) = L_X(x^*)$ holds;

(f) Guignard CQ (GCQ) if $T_X(x^*)^* = L_X(x^*)^*$ holds.

The LICQ, MFCQ, ACQ, and GCQ conditions belong to the standard conditions in the optimization community, see, e.g., [2, 20]. Also CRCQ, introduced originally in [15], has found widespread applications, cf. [15] for some examples. Finally, CPLD might be less known; the condition was introduced in [22] and afterwards shown to be a CQ in [1]. The following implications hold:



Most of these implications follow immediately from the above definitions. The only nontrivial part is that ACQ follows from CPLD, a statement that can be derived from [1, 3]. In view of the previous diagram, LICQ is the strongest and GCQ the weakest CQ among those given here. In fact, one can show that (in a certain sense) GCQ is the weakest possible CQ which guarantees that a local minimum is also a stationary point, see [2].

We close this section with a small example which may be viewed as a special case of the class of problems that will be introduced in the following section and which indicates that GCQ will play a central role in our analysis.

Example 2.3. Consider the two-dimensional optimization problem

$$\min_{x,y} f(x) \quad \text{s.t.} \quad xy = 0, \quad 0 \leq y \leq 1,$$

where we denote the variables by x and y instead of x_1 and x_2 since this simplifies the notation and since this also fits better into the framework that will be discussed later. Geometrically, it is clear (and can also be verified analytically in an easy way) that this simple optimization problem violates ACQ in $(x^*, y^*) = (0, 0)$, hence also the stronger conditions LICQ and MFCQ. On the other hand, GCQ is satisfied in (x^*, y^*) and thus every local minimum is a stationary point. \diamond

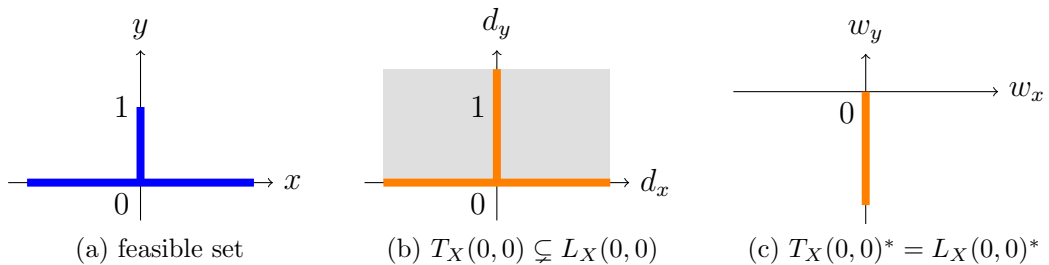


Figure 1: Illustration of Example 2.3

3 Reformulation

This section presents a reformulation of the cardinality constrained problem (1) as a smooth optimization problem and then discusses the relation between their solutions (in the sense of global minima) and their local minima in Sections 3.1 and 3.2, respectively.

In order to obtain a suitable reformulation of the cardinality constrained problem (1), we first consider the mixed integer problem

$$\begin{aligned} \min_{x,y} f(x) \quad \text{s.t.} \quad & x \in X \\ & e^T y \geq n - \varkappa, \\ & x_i y_i = 0 \quad \forall i = 1, \dots, n, \\ & y_i \in \{0, 1\} \quad \forall i = 1, \dots, n. \end{aligned} \tag{3}$$

Next, we consider the following standard relaxation of the mixed-integer problem (3):

$$\begin{aligned} \min_{x,y} f(x) \quad \text{s.t.} \quad & x \in X \\ & e^T y \geq n - \varkappa, \\ & x_i y_i = 0 \quad \forall i = 1, \dots, n, \\ & 0 \leq y_i \leq 1 \quad \forall i = 1, \dots, n, \end{aligned} \tag{4}$$

where the binary constraints are replaced in the usual way by some simple box constraints. The formulation (4) will be of central importance for this paper.

Remark 3.1. Note that the subsequent considerations would also hold with the inequality $e^T y \geq n - \varkappa$ in (4) being replaced by the equality constraint $e^T y = n - \varkappa$. The corresponding modifications are minor. Numerically, we prefer to work with the inequality version because this enlarges the feasible region and therefore provides some more freedom.

3.1 Relation between Global Minima

According to the following result, the two problems (1) and (3) have the same solutions in x in the sense of global minima.

Theorem 3.2. *A vector $x^* \in \mathbb{R}^n$ is a solution of problem (1) if and only if there exists a vector $y^* \in \mathbb{R}^n$ such that the pair (x^*, y^*) is a solution of the mixed-integer problem (3).*

Proof. Since the objective functions of the two problems (1) and (3) are the same and do not depend on y , it suffices to show that x is feasible for (1) if and only if there exists a vector y such that (x, y) is feasible for (3).

First assume that x is feasible for (1). Then, due to $\|x\|_0 \leq \varkappa$, the vector $y \in \mathbb{R}^n$ defined componentwise by

$$y_i := \begin{cases} 0 & \text{if } x_i \neq 0, \\ 1 & \text{if } x_i = 0 \end{cases} \quad \forall i = 1, \dots, n$$

satisfies $y \in \{0, 1\}^n$, $e^T y \geq n - \varkappa$, and $x_i y_i = 0$ for all $i = 1, \dots, n$. Hence (x, y) is feasible for problem (3).

Conversely, assume that we have a feasible pair (x, y) of problem (3). Then define the index set

$$J := \{i \mid y_i = 1\}.$$

Since, by assumption, $y_i \in \{0, 1\}$ and $e^T y \geq n - \varkappa$, it follows that $|J| \geq n - \varkappa$. Furthermore, using $x_i y_i = 0$ for all $i = 1, \dots, n$, we see that $x_i = 0$ at least for all $i \in J$, hence $\|x\|_0 \leq \varkappa$. Consequently, x is feasible for problem (1). \square

The following result states that the relaxed problem (4) is still equivalent to the original cardinality constrained problem (1) in the sense of the corresponding global minima.

Theorem 3.3. *A vector $x^* \in \mathbb{R}^n$ is a solution of problem (1) if and only if there exists a vector $y^* \in \mathbb{R}^n$ such that the pair (x^*, y^*) is a solution of the relaxed problem (4).*

Proof. By analogy with the proof of Theorem 3.2, it can be shown that a vector x is feasible for (1) if and only if there exists a vector y such that (x, y) is feasible for (4) (take $J := \{i \mid y_i \in (0, 1]\}$ instead of $J = \{i \mid y_i = 1\}$ in the previous proof). Since the objective function of both problems is the same, this implies the assertion. \square

An immediate consequence of the previous observation is the following existence result.

Theorem 3.4. *Suppose that the feasible set $\mathcal{F} := \{x \in X \mid \|x\|_0 \leq \varkappa\}$ of the cardinality constrained problem (1) is nonempty and X is compact. Then both problem (1) and the relaxed problem (4) have a nonempty solution set.*

Proof. First note that the set $\mathcal{C} := \{x \in \mathbb{R}^n \mid \|x\|_0 \leq \varkappa\}$ is obviously closed. Hence the feasible set \mathcal{F} of (1) is the intersection of a compact set X with a closed set \mathcal{C} and, therefore, compact. Since the objective function f is continuous, it follows that the cardinality constrained optimization problem (1) has a nonempty solution set. In view of Theorem 3.3, however, this implies that the relaxed problem (4) is also solvable. \square

3.2 Relation between Local Minima

In view of Theorem 3.3, there is a one-to-one correspondence between the solutions of the original problem (1) and the solutions of the relaxed problem (4). Our next aim is to investigate the relation between the local minima of these two optimization problems. The following result shows that every local minimum of the given cardinality constrained problem yields a local minimum of the relaxed problem (4).

Theorem 3.5. *Let $x^* \in \mathbb{R}^n$ be a local minimum of (1). Then there exists a vector $y^* \in \mathbb{R}^n$ such that the pair (x^*, y^*) is also a local minimum of (4).*

Proof. Let us define a vector y^* componentwise by

$$y_i^* := \begin{cases} 1, & \text{if } x_i^* = 0, \\ 0, & \text{if } x_i^* \neq 0 \end{cases} \quad \forall i = 1, \dots, n.$$

Then we have $y_i^* = 1$ if and only if $x_i^* = 0$ and hence $e^T y^* = n - \|x^*\|_0 \geq n - \varkappa$. It is easy to see that (x^*, y^*) is feasible for problem (4). We claim that (x^*, y^*) is a local minimum of (4). To this end, first note that there exists an $r_1 > 0$ such that

$$f(x) \geq f(x^*) \quad \forall x \in X \cap B_{r_1}(x^*), \quad \|x\|_0 \leq \varkappa$$

due to the assumed local optimality of x^* for problem (1). Furthermore, let us choose $r_2 = \frac{1}{2}$. Then we have $y_i > 0$ for all $y \in B_{r_2}(y^*)$ and all i such that $y_i^* > 0$. This observation immediately yields the inclusion

$$\{i \mid y_i = 0\} \subseteq \{i \mid y_i^* = 0\} \quad \forall y \in B_{r_2}(y^*). \quad (5)$$

Now take $r := \min\{r_1, r_2\}$ and let $(x, y) \in B_r(x^*) \times B_r(y^*)$ be an arbitrary feasible vector of the relaxed problem (4). Then, in particular, we have $x \in X$. Moreover, the inclusion (5) implies

$$x_i \neq 0 \implies y_i = 0 \implies y_i^* = 0 \implies x_i^* \neq 0$$

and therefore shows that $\|x\|_0 \leq \|x^*\|_0$. Hence x is feasible for problem (1). Since we also have $x \in B_{r_1}(x^*)$, we obtain $f(x) \geq f(x^*)$ from the local optimality of x^* for problem (1). Consequently, (x^*, y^*) is a local minimum of the relaxed problem (4). \square

Note that if $\|x^*\|_0 = \varkappa$, then the vector y^* in Theorem 3.5 is unique, i.e. there exists exactly one y^* such that (x^*, y^*) is a local minimum of (4) (see Proposition 3.8 below). If $\|x^*\|_0 < \varkappa$, then y^* is not unique. Unfortunately, the converse of Theorem 3.5 is not true in general. This is shown by the following counterexample.

Example 3.6. Consider the three-dimensional problem

$$\min_x \|x - a\|_2^2 \quad \text{s.t.} \quad \|x\|_0 \leq \varkappa, \quad x \in \mathbb{R}^3 \quad (6)$$

with $a := (1, 2, 3)^T$ and $\varkappa := 2$. It is easy to see that this problem has a unique global minimizer at

$$x^* := (0, 2, 3)^T$$

as well as two local minimizers at

$$x^1 := (1, 0, 3)^T \quad \text{and} \quad x^2 := (1, 2, 0)^T.$$

On the other hand, the relaxed problem (4) has a unique global minimum at

$$x^* := (0, 2, 3)^T, \quad y^* := (1, 0, 0)^T$$

(this is consistent with Theorem 3.3), but the number of local minima is larger, namely, they are

$$\begin{aligned} x^1 &:= (1, 0, 3)^T, & y^1 &:= (0, 1, 0)^T, \\ x^2 &:= (1, 2, 0)^T, & y^2 &:= (0, 0, 1)^T, \\ x^3 &:= (1, 0, 0)^T, & y^3 &:= (0, t, 1-t)^T \quad \forall t \in (0, 1), \\ x^4 &:= (0, 2, 0)^T, & y^4 &:= (t, 0, 1-t)^T \quad \forall t \in (0, 1), \\ x^5 &:= (0, 0, 3)^T, & y^5 &:= (t, 1-t, 0)^T \quad \forall t \in (0, 1), \\ x^6 &:= (0, 0, 0)^T, & y^6 &:= (t_1, t_2, t_3)^T \quad \forall t_i > 0 \text{ such that } t_1 + t_2 + t_3 = 1. \end{aligned}$$

Note that the corresponding y^i is neither unique nor binary for $i = 3, 4, 5, 6$, i.e. for all those x^i which are not local minima of (1). \diamond

Let (x^*, y^*) be a local minimizer of problem (4). One may think that if y^* is binary, then x^* is a local minimizer of problem (1). Unfortunately, this claim is not true in general. We demonstrate this by a simple modification of the previous counterexample.

Example 3.7. Consider once again the three-dimensional cardinality constrained problem from (6), but this time with $a := (1, 2, 0)^T$ and the cardinality number $\varkappa := 1$. Here, it is easy to see that the pair (x^*, y^*) with $x^* := (0, 0, 0)^T, y^* := (1, 1, 0)^T$ is a local minimizer of the corresponding relaxed problem (4) with a binary vector y^* , while x^* is not a local minimizer of (1). Note, however, that the vector y^* is not unique in this case. \diamond

The previous two examples illustrate that the relation between the local minima of the two problems (1) and (4) is not as easy as for the global minima. A central observation in this context is that those local minima of the relaxed problem, which are also local minima of the original problem, satisfy the cardinality constraint $\|x\|_0 \leq \varkappa$ with equality which, in view of the subsequent result, is equivalent to the statement that the vector y^* defined by x^* is unique.

Proposition 3.8. *Let (x^*, y^*) be a local minimum of problem (4). Then $\|x^*\|_0 = \varkappa$ holds if and only if y^* is unique, i.e. if there is exactly one y^* such that (x^*, y^*) is a local minimum of (4). In this case, the components of y^* are binary.*

Proof. First assume that $\|x^*\|_0 = \varkappa$ holds. Then it follows immediately from the constraints in (4) that there exists a unique vector y^* such that (x^*, y^*) is feasible for problem (4). The components of this vector y^* are obviously given by

$$y_i^* := \begin{cases} 1, & \text{if } x_i^* = 0, \\ 0, & \text{if } x_i^* \neq 0 \end{cases} \quad \forall i = 1, \dots, n$$

and are binary.

Conversely, suppose that y^* is unique. To prove that $\|x^*\|_0 = \varkappa$, we assume, on the contrary, that $\|x^*\|_0 < \varkappa$. Since this implies $\|x^*\|_0 \leq n - 2$ (recall that $\varkappa < n$), we can find $j_1 \neq j_2$ such that $x_{j_1}^* = x_{j_2}^* = 0$. Then consider the vectors $y', y'' \in \mathbb{R}^n$ with components defined by

$$y'_i := \begin{cases} 1, & \text{if } x_i^* = 0, \\ 0, & \text{if } x_i^* \neq 0 \end{cases} \quad y''_i := \begin{cases} \frac{1}{2}, & \text{if } i \in \{j_1, j_2\}, \\ 1, & \text{if } x_i^* = 0, i \notin \{j_1, j_2\}, \\ 0, & \text{if } x_i^* \neq 0 \end{cases} \quad \forall i = 1, \dots, n.$$

Then obviously $y' \neq y''$, but (x^*, y') and (x^*, y'') are both feasible for (4) since, e.g.,

$$e^T y'' = n - \|x^*\|_0 - 1 \geq n - (\varkappa - 1) - 1 = n - \varkappa.$$

Similar to the proof of Theorem 3.5 it can be verified that both (x^*, y') and (x^*, y'') are local minima of problem (4), thus contradicting the uniqueness of y^* . Hence, we necessarily have $\|x^*\|_0 = \varkappa$ which, as it was noted above, implies that y^* is binary. \square

We are finally in the position to prove a special case of the converse of Theorem 3.5.

Theorem 3.9. *Let (x^*, y^*) be a local minimizer of problem (4) satisfying $\|x^*\|_0 = \varkappa$. Then x^* is a local minimum of the cardinality constrained problem (1).*

Proof. By assumption, there exists some number $r_1 > 0$ such that (x^*, y^*) is a minimum of the relaxed problem (4) in a neighborhood $B_{r_1}(x^*) \times B_{r_1}(y^*)$ of (x^*, y^*) . Let us choose

$$r_2 > 0 \quad \text{with} \quad r_2 < \min\{|x_i^*| \mid x_i^* \neq 0\}$$

and $r := \min\{r_1, r_2\}$. We claim that x^* is a minimum of the cardinality constrained problem (1) in the neighborhood $B_r(x^*)$. To this end, let $x \in B_r(x^*)$ be an arbitrary feasible point of problem (1). By definition of r_2 and r , we have

$$x_i^* \neq 0 \quad \implies \quad x_i \neq 0 \quad \forall i = 1, \dots, n,$$

which implies $\varkappa = \|x^*\|_0 \leq \|x\|_0$. Since the feasibility of x implies $\|x\|_0 \leq \varkappa$, we obtain

$$\{i \mid x_i^* \neq 0\} = \{i \mid x_i \neq 0\},$$

or, equivalently, that

$$\{i \mid x_i^* = 0\} = \{i \mid x_i = 0\}.$$

This, however, implies that (x, y^*) is also feasible for the relaxed problem (4) satisfying $(x, y^*) \in B_r(x^*) \times B_r(y^*)$. Consequently, we obtain $f(x) \geq f(x^*)$ from the local optimality of (x^*, y^*) for problem (4). Altogether, this shows that x^* is a local minimum of (1). \square

Regarding the additional assumption $\|x^*\|_0 = \varkappa$ used in Theorem 3.9: Of course it depends on the concrete problem whether this condition is satisfied in a global minimum of (1). However, in instances where the cardinality constraint is a critical resource constraint, it is not unreasonable to assume that it is active in a global solution.

We close this section with a short comparison of our reformulation with the more standard one used in [5].

Remark 3.10. Consider the cardinality-constrained optimization problem (1), and assume, in addition, that the set X includes lower and upper bounds on the variables x_i , say $0 \leq x_i \leq u_i$ for all $i = 1, \dots, n$. Then, suppressing all other constraints, our complementarity-type reformulation yields the equivalence

$$\left. \begin{array}{l} 0 \leq x_i \leq u_i \quad (i = 1, \dots, n), \\ \|x\|_0 \leq \varkappa \end{array} \right\} \iff \left\{ \begin{array}{l} 0 \leq x_i \leq u_i \quad (i = 1, \dots, n), \\ 0 \leq y_i \leq 1, \quad (i = 1, \dots, n), \\ x_i y_i = 0 \quad (i = 1, \dots, n), \\ e^T y \geq n - \varkappa. \end{array} \right.$$

On the other hand, the mixed-integer program suggested in [5] provides the equivalence

$$\left. \begin{array}{l} 0 \leq x_i \leq u_i \quad (i = 1, \dots, n), \\ \|x\|_0 \leq \varkappa \end{array} \right\} \iff \left\{ \begin{array}{l} 0 \leq x_i \leq u_i(1 - y_i) \quad (i = 1, \dots, n), \\ y_i \in \{0, 1\} \quad (i = 1, \dots, n), \\ e^T y \geq n - \varkappa \end{array} \right.$$

whose standard relaxation gives the constraints

$$0 \leq x_i \leq u_i(1 - y_i), \quad 0 \leq y_i \leq 1 \quad (i = 1, \dots, n), \quad e^T y \geq n - \varkappa$$

which are linear in x and y , but no longer equivalent to the cardinality constraints. It is interesting to compare this formulation with our complementarity-type reformulation. To this end, we neglect the constraint $e^T y \geq n - \varkappa$ which is used in both cases, and consider a single component i of the vectors x_i and y_i . Then we have the constraints

$$0 \leq x_i \leq u_i, \quad 0 \leq y_i \leq 1, \quad x_i y_i = 0, \tag{7}$$

whereas [5] yields

$$0 \leq x_i \leq u_i(1 - y_i), \quad 0 \leq y_i \leq 1. \tag{8}$$

The sets described by (7) and (8) are shown in Figure 2 (a) and (b), respectively. It follows that (8) is simply the convex hull of our reformulation (7). Apart from this relation, we note, however, that our formulation can also be used when there are no lower or upper bounds on the variables. \diamond

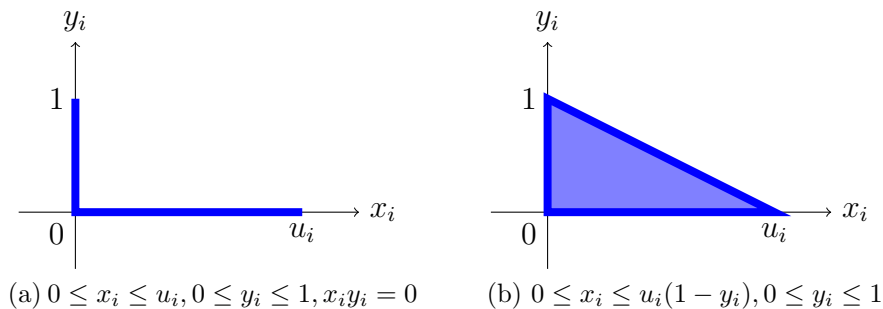


Figure 2: Comparison of the two different reformulations/relaxations

4 Stationarity Conditions

Here we investigate the question whether the standard KKT conditions are necessary optimality conditions for the relaxed program (4) or whether we have to deal with a weaker stationary concept in general. It turns out that the KKT conditions are indeed satisfied for the case where X is polyhedral convex, whereas this is no longer true (in general) for the case of a nonlinear set X . We therefore divide this section into two Subsections 4.1 and 4.2 where we discuss the linear and the nonlinear case separately.

4.1 Linear Constraints

In order to be able to prove the existence of Lagrange multipliers in a minimum of the reformulated problem (4), we consider the special case where X is polyhedral convex, i.e.

$$X = \{x \in \mathbb{R}^n \mid a_i^T x \leq \alpha_i \quad (i = 1, \dots, m), \quad b_i^T x = \beta_i \quad (i = 1, \dots, p)\}.$$

We will show that in this case GCQ (Guignard CQ) is satisfied in every feasible point and thus every local minimum of (4) is a KKT point.

To this end, let us denote the feasible set of (4) by Z , and define the following index sets for all $(x^*, y^*) \in Z$:

$$\begin{aligned} I_a(x^*) &:= \{i \in \{1, \dots, m\} \mid a_i^T x^* = \alpha_i\} \\ I_0(x^*) &:= \{i \in \{1, \dots, n\} \mid x_i^* = 0\} \\ I_{\pm 0}(x^*, y^*) &:= \{i \in \{1, \dots, n\} \mid x_i^* \neq 0, y_i^* = 0\}, \\ I_{00}(x^*, y^*) &:= \{i \in \{1, \dots, n\} \mid x_i^* = 0, y_i^* = 0\}, \\ I_{0+}(x^*, y^*) &:= \{i \in \{1, \dots, n\} \mid x_i^* = 0, y_i^* \in (0, 1)\}, \\ I_{01}(x^*, y^*) &:= \{i \in \{1, \dots, n\} \mid x_i^* = 0, y_i^* = 1\}. \end{aligned}$$

Note that the two index sets $I_0(x^*)$ and $I_{\pm 0}(x^*, y^*)$ form a partition of the set $\{1, \dots, n\}$, whereas $I_0(x^*)$ itself gets partitioned into the three subsets $I_{00}(x^*, y^*)$, $I_{0+}(x^*, y^*)$, and $I_{01}(x^*, y^*)$.

For all subsets $I \subseteq I_{00}(x^*, y^*)$, we define the restricted feasible sets

$$\begin{aligned} Z_I := \{(x, y) \in \mathbb{R}^n \times \mathbb{R}^n \mid & \forall_{i=1, \dots, m} a_i^T x \leq \alpha_i, \\ & \forall_{i=1, \dots, p} b_i^T x = \beta_i, \\ & e^T y \geq n - \varkappa, \\ & \forall_{i \in I_{0+}(x^*, y^*) \cup I_{01}(x^*, y^*) \cup I} x_i = 0, y_i \in [0, 1], \\ & \forall_{i \in I_{\pm 0}(x^*, y^*) \cup (I_{00}(x^*, y^*) \setminus I)} y_i = 0\}. \end{aligned} \quad (9)$$

Then we can rewrite the set Z locally around a feasible point (x^*, y^*) as follows.

Proposition 4.1. *Let $(x^*, y^*) \in Z$ and the sets Z_I for $I \subseteq I_{00}(x^*, y^*)$ be defined in (9). Then the following statements hold:*

- (a) $(x^*, y^*) \in Z_I$ for all $I \subseteq I_{00}(x^*, y^*)$.
- (b) For all $r > 0$ sufficiently small

$$Z \cap B_r(x^*, y^*) = \left(\bigcup_{I \subseteq I_{00}(x^*, y^*)} Z_I \right) \cap B_r(x^*, y^*).$$

Proof. Statement (a) follows directly from the definition of the sets Z_I . Hence we only have to prove (b). By definition $Z_I \subseteq Z$ for all $I \subseteq I_{00}(x^*, y^*)$. This immediately implies

$$Z \cap B_r(x^*, y^*) \supseteq \left(\bigcup_{I \subseteq I_{00}(x^*, y^*)} Z_I \right) \cap B_r(x^*, y^*).$$

Now consider an arbitrary element $(x, y) \in Z \cap B_r(x^*, y^*)$. Then $x \in X$ and $e^T y \geq n - \varkappa$. For all $r > 0$ sufficiently small, $i \in I_{0+}(x^*, y^*) \cup I_{01}(x^*, y^*)$ implies $y_i \in (0, 1]$ and thus $x_i = 0$. Analogously, we get $x_i \neq 0$ and thus $y_i = 0$ for all $i \in I_{\pm 0}(x^*, y^*)$. Now define

$$I = \{i \in I_{00}(x^*, y^*) \mid x_i = 0\}.$$

Due to the feasibility of (x, y) , this implies $y_i \in [0, 1]$ for all $i \in I$ and $y_i = 0$ for all $i \in I_{00}(x^*, y^*) \setminus I$. Thus, we have proven $(x, y) \in Z_I$ and consequently the opposite inclusion holds as well. \square

This result can be used to replace the tangent cone $T_Z(x^*, y^*)$ and its polar cone $T_Z(x^*, y^*)^*$ by unions and intersections of simpler cones.

Lemma 4.2. *Let $(x^*, y^*) \in Z$ and the sets Z_I for $I \subseteq I_{00}(x^*, y^*)$ be defined in (9). Then the tangent cone and its polar satisfy the following equations:*

$$(a) \quad T_Z(x^*, y^*) = \bigcup_{I \subseteq I_{00}(x^*, y^*)} T_{Z_I}(x^*, y^*).$$

$$(b) \quad T_Z(x^*, y^*)^* = \bigcap_{I \subseteq I_{00}(x^*, y^*)} T_{Z_I}(x^*, y^*)^*.$$

Proof. Let $r > 0$ be sufficiently small such that Proposition 4.1 holds. Then statement (a) follows from

$$\begin{aligned} T_Z(x^*, y^*) &= T_{Z \cap B_r(x^*, y^*)}(x^*, y^*) \\ &= T_{\left(\bigcup_{I \subseteq I_{00}(x^*, y^*)} Z_I\right) \cap B_r(x^*, y^*)}(x^*, y^*) \\ &= T_{\bigcup_{I \subseteq I_{00}(x^*, y^*)} Z_I}(x^*, y^*) \\ &= \bigcup_{I \subseteq I_{00}(x^*, y^*)} T_{Z_I}(x^*, y^*), \end{aligned}$$

where the first and third equations follow from the fact that the tangent cone, by definition, depends only on the local properties around (x^*, y^*) , the second equality comes from Proposition 4.1, whereas the final identity is again a direct consequence of the definition of the tangent cone, taking into account that we have the union of only finitely many sets here. Statement (b) is then a direct application of [2, Theorem 3.1.9] to the nonempty cones $T_{Z_I}(x^*, y^*)$. \square

To verify GCQ, we now have to calculate the polar cones $T_{Z_I}(x^*, y^*)^*$ and their intersection $T_Z(x^*, y^*)^*$. However, since the sets Z_I are polyhedral convex, calculating the polar cones $T_{Z_I}(x^*, y^*)^*$ is straightforward.

Lemma 4.3. *Let $(x^*, y^*) \in Z$ and the sets Z_I for $I \subseteq I_{00}(x^*, y^*)$ be defined in (9).*

(a) *For all $I \subseteq I_{00}(x^*, y^*)$, we have*

$$\begin{aligned} T_{Z_I}(x^*, y^*)^* = \{(w_x, w_y) \in \mathbb{R}^n \times \mathbb{R}^n \mid & w_x = \sum_{i \in I_a(x^*)} \lambda_i a_i + \sum_{i=1}^p \mu_i b_i + \sum_{i=1}^n \gamma_i e_i, \\ & w_y = \delta e + \sum_{i=1}^n \nu_i e_i, \\ & \forall_{i \in I_a(x^*)} \lambda_i \geq 0, \\ & \delta \leq 0 \text{ and } \delta = 0 \text{ if } e^T y^* > n - \varkappa, \\ & \forall_{i \in I_{0+}(x^*, y^*)} \nu_i = 0, \\ & \forall_{i \in I} \nu_i \leq 0, \\ & \forall_{i \in I_{01}(x^*, y^*)} \nu_i \geq 0, \\ & \forall_{i \in I_{\pm 0}(x^*, y^*) \cup (I_{00}(x^*, y^*) \setminus I)} \gamma_i = 0\}. \end{aligned}$$

(b) *The polar cone $T_Z(x^*, y^*)^*$ is given by*

$$\begin{aligned} T_Z(x^*, y^*)^* = \{(w_x, w_y) \in \mathbb{R}^n \times \mathbb{R}^n \mid & w_x = \sum_{i \in I_a(x^*)} \lambda_i a_i + \sum_{i=1}^p \mu_i b_i + \sum_{i=1}^n \gamma_i e_i, \\ & w_y = \delta e + \sum_{i=1}^n \nu_i e_i, \\ & \forall_{i \in I_a(x^*)} \lambda_i \geq 0, \\ & \delta \leq 0 \text{ and } \delta = 0 \text{ if } e^T y^* > n - \varkappa, \\ & \forall_{i \in I_{0+}(x^*, y^*)} \nu_i = 0, \\ & \forall_{i \in I_{00}(x^*, y^*)} \gamma_i = 0, \nu_i \leq 0, \\ & \forall_{i \in I_{01}(x^*, y^*)} \nu_i \geq 0, \\ & \forall_{i \in I_{\pm 0}(x^*, y^*)} \gamma_i = 0\}. \end{aligned}$$

Proof. (a) The set Z_I is polyhedral convex for all $I \subseteq I_{00}(x^*, y^*)$ and can be written as

$$Z_I = \{(x, y) \in \mathbb{R}^n \times \mathbb{R}^n \mid \begin{array}{ll} \forall_{i=1, \dots, m} & (a_i, 0)^T(x, y) \leq \alpha_i, \\ \forall_{i=1, \dots, p} & (b_i, 0)^T(x, y) = \beta_i, \\ & (0, e)^T(x, y) \geq n - \varkappa, \\ \forall_{i \in I_{0+}(x^*, y^*) \cup I_{01}(x^*, y^*) \cup I} & (e_i, 0)^T(x, y) = 0, \\ \forall_{i \in I_{0+}(x^*, y^*) \cup I_{01}(x^*, y^*) \cup I} & (0, e_i)^T(x, y) \geq 0, \\ \forall_{i \in I_{0+}(x^*, y^*) \cup I_{01}(x^*, y^*) \cup I} & (0, e_i)^T(x, y) \leq 1, \\ \forall_{i \in I_{\pm 0}(x^*, y^*) \cup (I_{00}(x^*, y^*) \setminus I)} & (0, e_i)^T(x, y) = 0 \end{array}\}$$

The polar cone $T_{Z_I}(x^*, y^*)^* (= N_{Z_I}(x^*, y^*))$ can thus be calculated using, for example, [23, Theorem 6.46] which, after some simplification, leads to the formula stated here.

(b) Let us denote the set on the right-hand side of the equation by W . By Lemma 4.2, we know $T_Z(x^*, y^*)^* = \bigcap_{I \subseteq I_{00}(x^*, y^*)} T_{Z_I}(x^*, y^*)^*$. Since $W \subseteq T_{Z_I}(x^*, y^*)^*$ for all $I \subseteq I_{00}(x^*, y^*)$, this implies $W \subseteq T_Z(x^*, y^*)^*$. Now consider an arbitrary element $(w_x, w_y) \in T_Z(x^*, y^*)^*$. Choosing $I = \emptyset$, we can conclude $(w_x, w_y) \in T_{Z_\emptyset}(x^*, y^*)^*$. Consequently, w_x can be written as $w_x = \sum_{i \in I_a(x^*)} \lambda_i a_i + \sum_{i=1}^p \mu_i b_i + \sum_{i=1}^n \gamma_i e_i$ with $\lambda_i \geq 0$ for all $i \in I_a(x^*)$ and $\gamma_i = 0$ for all $i \in I_{\pm 0}(x^*, y^*) \cup I_{00}(x^*, y^*)$. If, instead we choose $I = I_{00}(x^*, y^*)$, we can write w_y as $w_y = \delta e + \sum_{i=1}^n \nu_i e_i$ with $\delta \leq 0$ and $\delta = 0$ if $e^T y^* > n - \varkappa$, $\nu_i = 0$ for all $i \in I_{0+}(x^*, y^*)$, $\nu_i \leq 0$ for all $i \in I_{00}(x^*, y^*)$, and $\nu_i \geq 0$ for all $i \in I_{01}(x^*, y^*)$. Consequently, $(w_x, w_y) \in W$. Since $(w_x, w_y) \in T_Z(x^*, y^*)^*$ was chosen arbitrarily, this implies the missing inclusion. \square

Note that statement (b) is only true because there are no restrictions in Z_I depending on x and y at the same time.

Now, it remains to calculate the linearization cone $L_Z(x^*, y^*)$ and the corresponding polar cone.

Lemma 4.4. *Let $(x^*, y^*) \in Z$ be arbitrarily given. Then the polar cone of $L_Z(x^*, y^*)$ is given by*

$$L_Z(x^*, y^*)^* = \{(w_x, w_y) \in \mathbb{R}^n \times \mathbb{R}^n \mid \begin{array}{ll} w_x = \sum_{i \in I_a(x^*)} \lambda_i a_i + \sum_{i=1}^p \mu_i b_i + \sum_{i=1}^n \gamma_i e_i, \\ w_y = \delta e + \sum_{i=1}^n \nu_i e_i, \\ \forall_{i \in I_a(x^*)} & \lambda_i \geq 0, \\ \delta \leq 0 \text{ and } \delta = 0 \text{ if } e^T y^* > n - \varkappa, \\ \forall_{i \in I_{0+}(x^*, y^*)} & \nu_i = 0, \\ \forall_{i \in I_{00}(x^*, y^*)} & \gamma_i = 0, \nu_i \leq 0, \\ \forall_{i \in I_{01}(x^*, y^*)} & \nu_i \geq 0, \\ \forall_{i \in I_{\pm 0}(x^*, y^*)} & \gamma_i = 0 \end{array}\}.$$

Proof. By the definition of the linearization cone, we get

$$L_Z(x^*, y^*) = \{(d_x, d_y) \in \mathbb{R}^n \times \mathbb{R}^n \mid \begin{array}{ll} \forall_{i \in I_a(x^*)} & a_i^T d_x \leq 0, \\ \forall_{i=1, \dots, p} & b_i^T d_x = 0, \\ & e^T d_y \geq 0 \text{ if } e^T y^* = n - \varkappa, \\ \forall_{i \in I_{0+}(x^*, y^*)} & (d_x)_i = 0, \\ \forall_{i \in I_{00}(x^*, y^*)} & (d_y)_i \geq 0, \\ \forall_{i \in I_{01}(x^*, y^*)} & (d_x)_i = 0, (d_y)_i \leq 0, \\ \forall_{i \in I_{\pm 0}(x^*, y^*)} & (d_y)_i = 0 \end{array}\}.$$

Since $L_Z(x^*, y^*)$ is polyhedral convex, the corresponding polar cone can again be calculated using [23, Theorem 6.46], which leads to the given representation. \square

Using Lemmas 4.3 and 4.4, we immediately see $T_Z(x^*, y^*)^* = L_Z(x^*, y^*)^*$, i.e. GCQ is satisfied in any feasible point $(x^*, y^*) \in Z$ and thus local minima of the reformulated problem (4) are KKT points.

Corollary 4.5. *Let $(x^*, y^*) \in Z$ be an arbitrary feasible point of (4). Then GCQ holds in (x^*, y^*) .*

Note that Example 2.3 essentially implies that we cannot expect stronger CQs (like LICQ, MFCQ, or ACQ) to hold.

We also want to stress that Corollary 4.5 points out a significant difference between our class of problems and the closely related class of *mathematical programs with complementarity constraints* (MPCC) which are optimization problems defined by

$$\begin{aligned} \min_z f(z) \quad \text{s.t.} \quad & g_i(z) \leq 0 \quad \forall i = 1, \dots, m, \\ & h_i(z) = 0 \quad \forall i = 1, \dots, p, \\ & G_i(z) \geq 0, H_i(z) \geq 0, G_i(z)H_i(z) = 0 \quad \forall i = 1, \dots, n \end{aligned}$$

with continuously differentiable functions $f, g_i, h_i, G_i, H_i : \mathbb{R}^n \rightarrow \mathbb{R}$. If, for example, the set X from (1) is given, without loss of generality, in the standard form $X = \{x \mid Ax = b, x \geq 0\}$, then our relaxed problem (4) is a special case of an MPCC. However, a counterexample in Scheel and Scholtes [25] shows that GCQ may not hold for MPCCs although all functions g_i, h_i, G_i, H_i are linear. The reason that we are able to prove the satisfaction of GCQ has to do with the very special structure of our relaxed program where the two classes of variables x and y are combined only by the complementarity-type constraint, whereas there are no other joint constraints, cf. also the comment after the proof of Lemma 4.3.

4.2 Nonlinear Constraints

Here we consider the case where the set X is not (necessarily) polyhedral convex, i.e.

$$X = \{x \in \mathbb{R}^n \mid g_i(x) \leq 0 \ (i = 1, \dots, m), h_i(x) = 0 \ (i = 1, \dots, p)\} \quad (10)$$

with continuously differentiable functions $g_i, h_i : \mathbb{R}^n \rightarrow \mathbb{R}$. In the subsequent discussion, we use the same index sets as in the linear case with the exception of $I_a(x^*)$ which is replaced by

$$I_g(x^*) = \{i \in \{1, \dots, m\} \mid g_i(x^*) = 0\}.$$

The nonlinear case is much more delicate since it turns out that GCQ may not be satisfied. This is illustrated by the following example.

Example 4.6. Consider the convex, but not polyhedral convex, set

$$X := \{x \in \mathbb{R}^2 \mid x_1^2 + (x_2 - 1)^2 \leq 1\}$$

and $f(x) = x_1 + x_2^2$. When we choose $\varkappa = 1$, the unique global solution of the cardinality constrained problem (1) is $x^* = (0, 0)$. Since $\|x^*\|_0 = 0 < \varkappa$, the corresponding y^* is not uniquely determined. If we choose $y^* = (0, 1)$, then (x^*, y^*) is a global solution of the relaxed problem (4). However, one easily verifies that it is not a KKT point of (4) and thus GCQ cannot be satisfied in (x^*, y^*) .

Note that other pairs such as (x^*, \tilde{y}) with $\tilde{y} = (1, 1)$ are KKT points of (4). \diamond

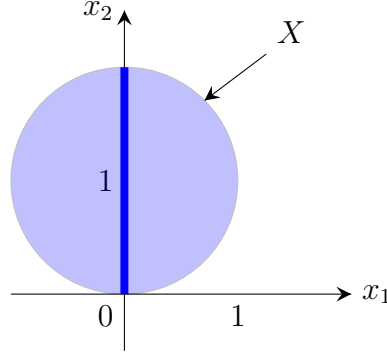


Figure 3: Illustration of Example 4.6

The previous example shows that, for nonlinear sets X (even if X is convex and satisfies the Slater condition), we have to deal with another stationary concept than the usual KKT conditions. This more suitable stationary concept is the M-stationary part of the subsequent definition.

Definition 4.7. *Let (x^*, y^*) be feasible for the relaxed program (4). Then (x^*, y^*) is called*

- (a) S-stationary ($S = strong$) if there exist multipliers $\lambda \in \mathbb{R}^m$, $\mu \in \mathbb{R}^p$, and $\gamma \in \mathbb{R}^n$ such that the following conditions hold:

$$\begin{aligned} \nabla f(x^*) + \sum_{i=1}^m \lambda_i \nabla g_i(x^*) + \sum_{i=1}^p \mu_i \nabla h_i(x^*) + \sum_{i=1}^n \gamma_i e_i &= 0, \\ \lambda_i &\geq 0, \quad \lambda_i g_i(x^*) = 0 \quad \forall i = 1, \dots, m, \\ \gamma_i &= 0 \quad \forall i \text{ such that } y_i^* = 0. \end{aligned}$$

- (b) M-stationary ($M = Mordukhovich$) if there exist multipliers $\lambda \in \mathbb{R}^m$, $\mu \in \mathbb{R}^p$, and $\gamma \in \mathbb{R}^n$ such that the following conditions hold:

$$\begin{aligned} \nabla f(x^*) + \sum_{i=1}^m \lambda_i \nabla g_i(x^*) + \sum_{i=1}^p \mu_i \nabla h_i(x^*) + \sum_{i=1}^n \gamma_i e_i &= 0, \\ \lambda_i &\geq 0, \quad \lambda_i g_i(x^*) = 0 \quad \forall i = 1, \dots, m, \\ \gamma_i &= 0 \quad \forall i \text{ such that } x_i^* \neq 0. \end{aligned}$$

The terminology used in the previous definition is similar to the one in the MPEC-setting. Note that the only difference in the two definitions is that S-stationarity requires $\gamma_i = 0$ for all indices i such that $y_i^* = 0$, whereas M-stationarity says that

this has to hold only for those indices i where $x_i^* \neq 0$ (recall that the feasibility of (x^*, y^*) then implies $y_i^* = 0$), but M-stationarity does not require anything for the multipliers γ_i for the bi-active indices where we have $x_i^* = 0$ and $y_i^* = 0$, hence M-stationarity is a weaker condition than S-stationarity.

Of course, the definitions of S- and M-stationarity are completely unmotivated so far. As for S-stationarity, the following result simply says that this is just a reformulation of the standard KKT conditions.

Proposition 4.8. *Let (x^*, y^*) be feasible for the relaxed program (4) with X defined by (10). Then (x^*, y^*) is a stationary point of (4), i.e. satisfies the usual KKT conditions, if and only if (x^*, y^*) is an S-stationary point.*

Proof. Let (x^*, y^*) be a stationary point of (4). Then there exist Lagrange multipliers $\lambda, \mu, \rho, \tilde{\gamma}, \nu^+, \nu^-$ such that the following KKT conditions hold:

$$\begin{aligned} \nabla f(x^*) + \sum_{i=1}^m \lambda_i \nabla g_i(x^*) + \sum_{j=1}^p \mu_j \nabla h_j(x^*) + \sum_{i=1}^n \tilde{\gamma}_i y_i^* e_i &= 0, \\ -\delta e + \sum_{i=1}^n \tilde{\gamma}_i x_i^* e_i + \sum_{i=1}^n (\nu_i^+ - \nu_i^-) e_i &= 0, \\ \lambda_i \geq 0, \quad \lambda_i g_i(x^*) &= 0 \quad \forall i = 1, \dots, m, \\ \delta \geq 0, \quad \delta (e^T y^* - n + \varkappa) &= 0, \\ \nu_i^+ \geq 0, \quad \nu_i^+ (y_i^* - 1) &= 0 \quad \forall i = 1, \dots, n, \\ \nu_i^- \geq 0, \quad \nu_i^- y_i^* &= 0 \quad \forall i = 1, \dots, n. \end{aligned}$$

Setting $\gamma_i := \tilde{\gamma}_i y_i^*$, it is easy to see that (x^*, y^*) is an S-stationary point.

Conversely, assume that (x^*, y^*) is S-stationary with some corresponding multipliers λ, μ, γ . Then define

$$\tilde{\gamma}_i := \begin{cases} \frac{\gamma_i}{y_i^*} & \text{if } y_i^* > 0, \\ 0 & \text{if } y_i^* = 0. \end{cases}$$

The definition of S-stationarity then implies $\gamma_i = \tilde{\gamma}_i y_i^*$ for all $i = 1, \dots, n$. Therefore, setting $\delta := 0, \nu_i^+ := 0, \nu_i^- := 0$ (for example), it follows immediately that (x^*, y^*) together with these multipliers satisfies the above KKT conditions. \square

Hence S-stationarity is just a different way of writing down the KKT conditions of the relaxed problem. Note, however, that the transformation of the corresponding multipliers is not necessarily unique when going from S-stationarity to the KKT conditions. This has to be expected since the Lagrange multipliers corresponding to the KKT conditions are typically not unique (since LICQ and even MFCQ are violated), whereas the multipliers from the S-stationary conditions are obviously unique under a suitable (and obvious) linear independence assumption, see CC-LICQ below.

M-stationarity may be viewed as a slightly weaker concept than S-stationarity (as noted above), hence a weaker optimality condition than the usual KKT conditions. More precisely, the M-stationarity conditions are exactly the KKT conditions of the following *tightened nonlinear program* $\text{TNLP}(x^*)$:

$$\min_x f(x) \quad \text{s.t.} \quad g(x) \leq 0, \quad h(x) = 0, \quad x_i = 0 \quad (i \in I_0(x^*)).$$

Obviously, a local minimizer x^* of the original problem (1) is also a local minimizer of $\text{TNLP}(x^*)$ and thus an M-stationary point under suitable CQs (see below).

M-stationarity will occur in our subsequent section where it is shown that our relaxation method converges to an M-stationary point. We want to close this section with another aspect that is of some interest: S-stationarity is an optimality measure that depends both on x and y , whereas M-stationarity depends on x only. Hence M-stationarity may be viewed as an optimality measure of the original cardinality constrained problem (1) (which is a problem in the x -variables only), whereas S-stationarity involves the somewhat artificial y -components. In particular, this allows us to say that a vector x^* itself (and not a pair (x^*, y^*)) is an M-stationary point of the original problem (1).

Let us go back to Example 4.6, where (x^*, y) with any feasible y -component is a global solution of the relaxed problem (4). Applying the previous stationarity concepts, we see that x^* is an M-stationary point. However, (x^*, y) is S-stationary only, if we pick the “right” y -components such as \tilde{y} whereas choosing the “wrong” y -component such as y^* can destroy S-stationarity.

We next want to introduce some problem-tailored CQs for the optimization problem with cardinality constraints. Again, we may try to follow the idea that our relaxed program (4) is closely related to MPCCs. Indeed, also for nonlinear constraints, we may assume that all variables x_i are nonnegative. Then the relaxed program (4) becomes a special instance of an MPCC, and this, in principle, allows to apply suitable MPCC-tailored constraint qualifications also to the program (4). However, it turns out that these MPCC-tailored conditions, though being relaxations of standard CQs, are still too strong in our case: In all feasible points $(x, y) \in Z$ with $\|x\|_0 = \varkappa$, we have $y_i \in \{0, 1\}$ and $|x_i| + y_i \neq 0$ for all $i = 1, \dots, n$ as well as $e^T y = n - \varkappa$. Thus, we have at least $n + 1$ active constraints in (x, y) and the corresponding gradients are $(0, \pm e_i)^T$ ($i = 1, \dots, n$) and $(0, e)$. This implies that MPCC-LICQ and MPCC-MFCQ are violated in all such points.

We are therefore urged to take into account the particular structure of the relaxed cardinality problem (4) in order to define CQs that are better suited to this program. To this end, let (x^*, y^*) be a feasible point of the relaxed program (4), and consider again the tightened nonlinear program $\text{TNLP}(x^*)$. We then say that (x^*, y^*) satisfies a CQ for the relaxed problem (4) when x^* satisfies the corresponding standard CQ for $\text{TNLP}(x^*)$. This leads to the following definition for CC-CPLD. The stronger CQs CC-LICQ, CC-MFCQ and CC-CRCQ can be defined analogously.

Definition 4.9. *A point x^* feasible for the cardinality constrained problem (1) satisfies CC-CPLD if for any subsets $I_1 \subseteq I_g(x^*)$, $I_2 \subseteq \{1, \dots, p\}$ and $I_3 \subseteq I_0(x^*)$ such that the gradients*

$$\nabla g_i(x) \ (i \in I_1) \quad \text{and} \quad \nabla h_i(x) \ (i \in I_2), \ e_i \ (i \in I_3)$$

are positively linearly dependent in $x = x^$, they are linearly dependent in a neighborhood (in \mathbb{R}^n) of x^* .*

Thanks to the definition of these CQs via $\text{TNLP}(x^*)$, we immediately obtain the same implications between the CC-CQs as mentioned in Section 2 for standard CQs. Note that it is also possible to define suitable counterparts of ACQ and GCQ

in the context of cardinality constrained optimization problems. Some details will indeed be given in a forthcoming paper, but for the purpose of this paper, these generalizations are not important.

5 Regularization Method and its Convergence

Having introduced the relaxed program (4) and taking into account its relation to the cardinality constrained optimization problem (1), there exist different options to solve the original problem (1). One way would be to apply a branch-and-bound/cut-type strategy to the corresponding mixed-integer formulation from (3). This is probably the only way which guarantees to find the global optimum, but it is very costly and time-consuming and therefore not the path we want to follow here.

Alternatively, one may view the relaxed program (4) as an ordinary smooth optimization problem and apply standard software to this program. However, even in the case where X is polyhedral convex, the feasible set of the relaxed program (4) is complicated and violates most CQs that are typically required by the existing algorithms for nonlinear programs. Furthermore, the discussion in the previous section indicates that the standard software that tries to find KKT points may fail when X is not polyhedral convex.

We therefore follow a different approach, motivated by similar considerations for mathematical programs with equilibrium constraints, and solve a sequence of suitably regularized programs with the idea that each regularized program has better properties than the relaxed program from (4). The particular regularization that we use here is discussed in Section 5.1, and the convergence properties of the corresponding regularization method are analyzed in Section 5.2. Finally, in Section 5.3, we discuss some regularity properties of the regularized subproblems.

5.1 The Regularized Program

Here we adapt the approach from [16] and regularize the relaxed program (4) in the following way: Define the functions

$$\varphi(a, b; t) := \begin{cases} (a - t)(b - t) & \text{if } a + b \geq 2t, \\ -\frac{1}{2}[(a - t)^2 + (b - t)^2] & \text{if } a + b < 2t \end{cases}$$

as well as

$$\tilde{\varphi}(a, b; t) := \begin{cases} (-a - t)(b - t) & \text{if } -a + b \geq 2t, \\ -\frac{1}{2}[(-a - t)^2 + (b - t)^2] & \text{if } -a + b < 2t. \end{cases}$$

Note that $\tilde{\varphi}$ differs from the mapping φ only in a being substituted by $-a$. We want to replace the constraints $x_i y_i = 0, 0 \leq y_i \leq 1$ by the inequalities $0 \leq y_i \leq 1, \varphi(x_i, y_i; t) \leq 0$, and $\tilde{\varphi}(x_i, y_i; t) \leq 0$, where $t > 0$ denotes a suitable parameter.

It can be easily verified that for all $t \geq 0$

$$\varphi(a, b; t) \leq 0 \iff a \leq t \text{ or } b \leq t \iff \min\{a, b\} \leq t.$$

More precisely, $\varphi(\cdot; 0)$ is an NCP-function, see [28] for more details on such functions. Since $\tilde{\varphi}$ results from φ by replacing a with $-a$, we have for all $t \geq 0$

$$\tilde{\varphi}(a, b; t) \leq 0 \iff -a \leq t \text{ or } b \leq t \iff \min\{-a, b\} \leq t.$$

Thus, we enlarge the feasible region of the program (4), see Figure 4.

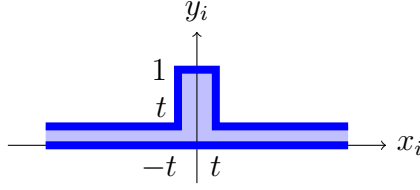


Figure 4: Illustration of the regularized feasible set

Similar to a result from [16], we have the following simple observation.

Lemma 5.1. *The two functions φ and $\tilde{\varphi}$ are continuously differentiable everywhere with gradients given by*

$$\nabla\varphi(a, b; t) = \begin{cases} \begin{pmatrix} b - t \\ a - t \end{pmatrix} & \text{if } a + b \geq 2t, \\ -\begin{pmatrix} a - t \\ b - t \end{pmatrix} & \text{if } a + b < 2t \end{cases}$$

and

$$\nabla\tilde{\varphi}(a, b; t) = \begin{cases} \begin{pmatrix} t - b \\ -a - t \end{pmatrix} & \text{if } -a + b \geq 2t, \\ -\begin{pmatrix} a + t \\ b - t \end{pmatrix} & \text{if } -a + b < 2t \end{cases}$$

respectively.

We now consider the following regularized problem NLP(t) of (4):

$$\begin{aligned} \min_{x, y} f(x) \quad \text{s.t.} \quad & g_i(x) \leq 0 \quad \forall i = 1, \dots, m, \\ & h_i(x) = 0 \quad \forall i = 1, \dots, p, \\ & e^T y \geq n - \varkappa, \\ & \varphi(x_i, y_i; t) \leq 0 \quad \forall i = 1, \dots, n, \\ & \tilde{\varphi}(x_i, y_i; t) \leq 0 \quad \forall i = 1, \dots, n, \\ & 0 \leq y_i \leq 1 \quad \forall i = 1, \dots, n, \end{aligned}$$

where $t \geq 0$ denotes a suitable parameter. Note here that, in our terminology, we distinguish between the relaxed problem (4) (which results from a standard relaxation of a mixed-integer problem) and the regularized problem NLP(t) (which, in other contexts, is also very often called a relaxation).

The regularized problem has some obvious properties which we summarize in the following result.

Proposition 5.2. *Let $Z(t)$ denote the feasible set of the regularized problem NLP(t), and recall that Z denotes the feasible set of the relaxed program from (4). Then the following statements hold:*

- (a) $Z(t_1) \subseteq Z(t_2)$ for all $0 \leq t_1 \leq t_2$.
- (b) $Z \subseteq Z(t)$ for all $t \geq 0$.
- (c) $Z = Z(t)$ for $t = 0$.

5.2 Convergence Result

The idea of the regularization method is to solve a sequence of programs $NLP(t_k)$ with $t_k \downarrow 0$. Since it is unrealistic that we are able to solve (in the sense of finding a global minimum) the program $NLP(t_k)$, we assume in the following result only that we have a sequence of KKT points and show that any limit point is an M-stationary point of the relaxed program (4) under the rather weak CC-CPLD condition. The result then, of course, also holds under the stronger LICQ- and MFCQ-type conditions.

Theorem 5.3. *Let $\{t_k\} \downarrow 0$ and $\{(x^k, y^k, \lambda^k, \mu^k, \delta^k, \tau^k, \tilde{\tau}^k, \nu^k)\}$ be a corresponding sequence of KKT points of $NLP(t_k)$ such that $(x^k, y^k) \rightarrow (x^*, y^*)$. Assume that the limit point satisfies CC-CPLD. Then x^* is an M-stationary point of the program (4).*

Proof. By construction of the regularization functions φ and $\tilde{\varphi}$, the limit point (x^*, y^*) is feasible for (4). Hence x^* itself is feasible for the cardinality constrained optimization problem (1). Furthermore, since the KKT conditions hold for each $k \in \mathbb{N}$, there exist suitable multipliers $\lambda^k, \mu^k, \delta^k, \tau^k, \tilde{\tau}^k, \nu^k$ such that the following conditions hold:

$$\begin{aligned} & \nabla f(x^k) + \sum_{i=1}^m \lambda_i^k \nabla g_i(x^k) + \sum_{i=1}^p \mu_i^k \nabla h_i(x^k) + \\ & \sum_{i=1}^n \tau_i^k \nabla_x \varphi(x_i^k, y_i^k; t_k) + \sum_{i=1}^n \tilde{\tau}_i^k \nabla_x \tilde{\varphi}(x_i^k, y_i^k; t_k) = 0, \\ & -\delta^k e + \sum_{i=1}^n \tau_i^k \nabla_y \varphi(x_i^k, y_i^k; t_k) + \sum_{i=1}^n \tilde{\tau}_i^k \nabla_y \tilde{\varphi}(x_i^k, y_i^k; t_k) + \sum_{i=1}^n \nu_i^k e_i = 0, \\ & \lambda_i^k \geq 0, \quad g_i(x^k) \leq 0, \quad \lambda_i^k g_i(x^k) = 0 \quad \forall i = 1, \dots, m, \\ & \hspace{15em} h_i(x^k) = 0 \quad \forall i = 1, \dots, p, \\ & \delta^k \geq 0, \quad e^T y^k - n + \varkappa \geq 0, \quad \delta^k (e^T y^k - n + \varkappa) = 0, \\ & \tau_i^k \geq 0, \quad \varphi(x_i^k, y_i^k; t_k) \leq 0, \quad \tau_i^k \varphi(x_i^k, y_i^k; t_k) = 0 \quad \forall i = 1, \dots, n, \\ & \tilde{\tau}_i^k \geq 0, \quad \tilde{\varphi}(x_i^k, y_i^k; t_k) \leq 0, \quad \tilde{\tau}_i^k \tilde{\varphi}(x_i^k, y_i^k; t_k) = 0 \quad \forall i = 1, \dots, n, \\ & \nu_i^k \geq 0 \quad (i : y_i^k = 1), \quad \nu_i^k = 0 \quad (i : y_i^k \in (0, 1)), \quad \nu_i^k \leq 0 \quad (i : y_i^k = 0) \quad \forall i = 1, \dots, n, \end{aligned}$$

where ν_i^k denotes the (joint) multiplier of the box constraints $0 \leq y_i^k \leq 1$.

Using Lemma 5.1, we may rewrite the first two equations as

$$\nabla f(x^k) + \sum_{i=1}^m \lambda_i^k \nabla g_i(x^k) + \sum_{i=1}^p \mu_i^k \nabla h_i(x^k) + \sum_{i=1}^n \tau_i^k (y_i^k - t_k) e_i + \sum_{i=1}^n \tilde{\tau}_i^k (t_k - y_i^k) e_i = 0 \quad (11)$$

and

$$\sum_{i=1}^n \nu_i^k e_i - \delta^k e + \sum_{i=1}^n \tau_i^k (x_i^k - t_k) e_i + \sum_{i=1}^n \tilde{\tau}_i^k (-x_i^k - t_k) e_i = 0,$$

respectively. Here, we used the fact that we always have $\tau_i^k \nabla_x \varphi(x_i^k, y_i^k; t_k) = \tau_i^k (y_i^k - t_k) e_i$ and, similarly, for the other partial derivative and for the mapping $\tilde{\varphi}$. This

equality comes from the observation that, if $\varphi(x_i^k, y_i^k; t_k) < 0$ is inactive, we have $\tau_i^k = 0$ from the KKT conditions, in particular, the above equation holds, whereas if $\varphi(x_i^k, y_i^k; t_k) = 0$, we necessarily have $x_i^k + y_i^k \geq 2t_k$ and the equation follows from Lemma 5.1.

Now, it is easy to see that, for all $k \in \mathbb{N}$ sufficiently large, we (in particular) have

$$\lambda_i^k > 0 \implies g_i(x^k) = 0 \implies g_i(x^*) = 0$$

and $\text{supp}(\tau^k) \cap \text{supp}(\tilde{\tau}^k) = \emptyset$. The latter implies that the following multipliers

$$\gamma_i^k := \begin{cases} \tau_i^k(y_i^k - t_k) & \text{if } i \in \text{supp}(\tau^k), \\ \tilde{\tau}_i^k(t_k - y_i^k) & \text{if } i \in \text{supp}(\tilde{\tau}^k), \\ 0 & \text{otherwise} \end{cases}$$

are well defined and by equation (11) satisfy

$$\nabla f(x^k) + \sum_{i=1}^m \lambda_i^k \nabla g_i(x^k) + \sum_{i=1}^p \mu_i^k \nabla h_i(x^k) + \sum_{i=1}^n \gamma_i^k e_i = 0 \quad (12)$$

We claim that, for all i with $x_i^* \neq 0$, we have $\gamma_i^k = 0$ for all $k \in \mathbb{N}$ sufficiently large. First, consider the case $x_i^* > 0$. Then $x_i^k > t_k$ for all k sufficiently large. If $i \in \text{supp}(\tau^k)$, the KKT conditions imply $\varphi(x_i^k, y_i^k; t_k) = 0$ and therefore, in view of the definition of this mapping, we necessarily get $y_i^k = t_k$ which, in turn, yields $\gamma_i^k = 0$. On the other hand, if $i \in \text{supp}(\tilde{\tau}^k)$, we have $\tilde{\varphi}(x_i^k, y_i^k; t_k) = 0$, hence once again $y_i^k = t_k$ since $-x_i^k - t_k < 0$ for all sufficiently large k . This also yields $\gamma_i^k = 0$. For $i \notin \text{supp}(\tau^k) \cup \text{supp}(\tilde{\tau}^k)$, we automatically have $\gamma_i^k = 0$ by definition. In a similar way, one can treat the case $x_i^* < 0$, which implies $-x_i^k > t_k$ for all k sufficiently large, and the corresponding arguments are then symmetric to the case $x_i^* > 0$.

By [27, Lemma A.1], we can assume without loss of generality that the gradients (including the unit vectors) corresponding to nonvanishing multipliers in equation (12) are linearly independent. Note that this might change the multipliers $\{(\lambda^k, \mu^k, \gamma^k)\}$ but preserves their signs and vanishing multipliers remain zero.

We claim that the sequence $\{(\lambda^k, \mu^k, \gamma^k)\}$ is bounded. Assume it is unbounded. Taking a subsequence if necessary, we may assume without loss of generality that the corresponding normalized sequence converges, say

$$\frac{(\lambda^k, \mu^k, \gamma^k)}{\|(\lambda^k, \mu^k, \gamma^k)\|_2} \rightarrow (\bar{\lambda}, \bar{\mu}, \bar{\gamma}) \neq 0.$$

Dividing (12) by $\|(\lambda^k, \mu^k, \gamma^k)\|$ and taking the limit $k \rightarrow \infty$, we then obtain

$$\sum_{i=1}^m \bar{\lambda}_i \nabla g_i(x^*) + \sum_{i=1}^p \bar{\mu}_i \nabla h_i(x^*) + \sum_{i=1}^n \bar{\gamma}_i e_i = 0 \quad (13)$$

with $\bar{\lambda}_i \geq 0$ for all $i = 1, \dots, m$ and $\bar{\lambda}_i = 0$ for all i such that $g_i(x^*) < 0$ (since then $g_i(x^k) < 0$ for all k sufficiently large and, therefore, $\lambda_i^k = 0$ in view of the corresponding KKT conditions). Furthermore, for all i with $x_i^* \neq 0$, we have $\gamma_i^k = 0$ for all k sufficiently large in view of the preceding discussion and, therefore, also

$\bar{\gamma}_i = 0$. Hence, we know $\bar{\lambda} \geq 0$, $\text{supp}(\bar{\lambda}) \subseteq I_g(x^*)$ and $\text{supp}(\bar{\gamma}) \subseteq I_0(x^*)$. But then by CC-CPLD, the positively linearly dependent gradients

$$\{\nabla g_i(x^*) \mid i \in \text{supp}(\bar{\lambda})\} \cup \{\{\nabla h_i(x^*) \mid i \in \text{supp}(\bar{\mu})\} \cup \{e_i \mid i \in \text{supp}(\bar{\gamma})\}\}$$

would have to remain linearly dependent in a neighborhood of x^* , a contradiction to the choice of the multipliers $\{(\lambda^k, \mu^k, \gamma^k)\}$.

This shows that the sequence $\{(\lambda^k, \mu^k, \gamma^k)\}$ remains bounded. Subsequencing if necessary, we may therefore assume that $(\lambda^k, \mu^k, \gamma^k) \rightarrow (\lambda, \mu, \gamma)$. Similar to the previous argument, we then obtain

$$\begin{aligned} \nabla f(x^*) + \sum_{i=1}^m \lambda_i \nabla g_i(x^*) + \sum_{i=1}^p \mu_i \nabla h_i(x^*) + \sum_{i=1}^n \gamma_i e_i &= 0, \\ \lambda_i &\geq 0 \quad (i \in I_g(x^*)), \quad \lambda_i = 0 \quad (i \notin I_g(x^*)), \\ \gamma_i &= 0 \quad (i : x_i^* \neq 0), \end{aligned}$$

i.e., x^* is an M-stationary point. □

5.3 Properties of the Regularized Subproblems

Since we want to solve the regularized problems $\text{NLP}(t_k)$ numerically, it would be beneficial to know whether they inherit properties such as constraint qualifications from the original relaxed problem (4). In order to answer this question, we define the following index sets for a $t > 0$ and (\hat{x}, \hat{y}) feasible for $\text{NLP}(t)$:

$$\begin{aligned} I_\varphi(\hat{x}, \hat{y}; t) &:= \{i \in \{1, \dots, n\} \mid \varphi(\hat{x}_i, \hat{y}_i; t) = 0\}, \\ I_\varphi^{00}(\hat{x}, \hat{y}; t) &:= \{i \in \{1, \dots, n\} \mid \hat{x}_i = t, \hat{y}_i = t\}, \\ I_\varphi^{0+}(\hat{x}, \hat{y}; t) &:= \{i \in \{1, \dots, n\} \mid \hat{x}_i = t, \hat{y}_i > t\}, \\ I_\varphi^{+0}(\hat{x}, \hat{y}; t) &:= \{i \in \{1, \dots, n\} \mid \hat{x}_i > t, \hat{y}_i = t\}, \\ I_{\tilde{\varphi}}(\hat{x}, \hat{y}; t) &:= \{i \in \{1, \dots, n\} \mid \tilde{\varphi}(\hat{x}_i, \hat{y}_i; t) = 0\}, \\ I_{\tilde{\varphi}}^{00}(\hat{x}, \hat{y}; t) &:= \{i \in \{1, \dots, n\} \mid \hat{x}_i = -t, \hat{y}_i = t\}, \\ I_{\tilde{\varphi}}^{0+}(\hat{x}, \hat{y}; t) &:= \{i \in \{1, \dots, n\} \mid \hat{x}_i = -t, \hat{y}_i > t\}, \\ I_{\tilde{\varphi}}^{-0}(\hat{x}, \hat{y}; t) &:= \{i \in \{1, \dots, n\} \mid \hat{x}_i < -t, \hat{y}_i = t\} \end{aligned}$$

Note that, due to the feasibility of (\hat{x}, \hat{y}) , the three index sets $I_\varphi^{00}(\hat{x}, \hat{y}; t)$, $I_\varphi^{0+}(\hat{x}, \hat{y}; t)$, and $I_\varphi^{+0}(\hat{x}, \hat{y}; t)$ form a partitioning of the set $I_\varphi(\hat{x}, \hat{y}; t)$. A corresponding observation holds for the index set $I_{\tilde{\varphi}}(\hat{x}, \hat{y}; t)$.

For all subsets $I \subseteq I_\varphi^{00}(\hat{x}, \hat{y}; t)$ and $\tilde{I} \subseteq I_{\tilde{\varphi}}^{00}(\hat{x}, \hat{y}; t)$, we define the nonlinear programs $\text{NLP}(t, I, \tilde{I})$ as

$$\min_{x, y} f(x) \quad \text{s.t.} \quad g(x) \leq 0, \quad h(x) = 0, \quad e^T y \geq n - \varkappa,$$

$$\begin{aligned} 0 \leq y_i \leq t \quad \forall i \in I_\varphi^{+0}(\hat{x}, \hat{y}; t) \cup (I_\varphi^{00}(\hat{x}, \hat{y}; t) \setminus I) \cup I_{\tilde{\varphi}}^{-0}(\hat{x}, \hat{y}; t) \cup (I_{\tilde{\varphi}}^{00}(\hat{x}, \hat{y}; t) \setminus \tilde{I}), \\ -t \leq x_i \leq t, 0 \leq y_i \leq 1 \quad \forall i \in I_\varphi^{0+}(\hat{x}, \hat{y}; t) \cup I \cup I_{\tilde{\varphi}}^{0+}(\hat{x}, \hat{y}; t) \cup \tilde{I}, \\ \varphi(x_i, y_i; t) \leq 0, \tilde{\varphi}(x_i, y_i; t) \leq 0, 0 \leq y_i \leq 1 \quad \forall i \notin I_\varphi(\hat{x}, \hat{y}; t) \cup I_{\tilde{\varphi}}(\hat{x}, \hat{y}; t) \end{aligned}$$

Let us denote the feasible set of $NLP(t)$ by $Z(t)$ and the feasible set of $NLP(t, I, \tilde{I})$ by $Z(t, I, \tilde{I})$. Analogously to Proposition 4.1, one can show that $(\hat{x}, \hat{y}) \in Z(t, I, \tilde{I})$ for all subsets $I \subseteq I_\varphi^{00}(\hat{x}, \hat{y}; t)$ and $\tilde{I} \subseteq I_\varphi^{00}(\hat{x}, \hat{y}; t)$. Furthermore, there exists a sufficiently small $r > 0$ such that

$$Z(t) \cap B_r(\hat{x}, \hat{y}) = \left(\bigcup_{I \subseteq I_\varphi^{00}(\hat{x}, \hat{y}; t), \tilde{I} \subseteq I_\varphi^{00}(\hat{x}, \hat{y}; t)} Z(t, I, \tilde{I}) \right) \cap B_r(\hat{x}, \hat{y})$$

holds. In fact, due to the preceding observation, it is fairly easy to see that the right-hand side is included in the left-hand side, whereas the other direction follows by taking, e.g.

$$I := \{i \in I_\varphi^{00}(\hat{x}, \hat{y}; t) \mid y_i > t\} \quad \text{and} \quad \tilde{I} := \{i \in I_\varphi^{00}(\hat{x}, \hat{y}; t) \mid y_i > t\}.$$

Similar to Lemma 4.2, this implies

$$\begin{aligned} T_{Z(t)}(\hat{x}, \hat{y}) &= \bigcup_{I \subseteq I_\varphi^{00}(\hat{x}, \hat{y}; t), \tilde{I} \subseteq I_\varphi^{00}(\hat{x}, \hat{y}; t)} T_{Z(t, I, \tilde{I})}(\hat{x}, \hat{y}), \\ T_{Z(t)}(\hat{x}, \hat{y})^* &= \bigcap_{I \subseteq I_\varphi^{00}(\hat{x}, \hat{y}; t), \tilde{I} \subseteq I_\varphi^{00}(\hat{x}, \hat{y}; t)} T_{Z(t, I, \tilde{I})}(\hat{x}, \hat{y})^*. \end{aligned} \quad (14)$$

Using these preparations, we can now prove the main result in this section.

Theorem 5.4. *Let (x^*, y^*) be feasible for the relaxed problem (4). When CC-CPLD is satisfied in (x^*, y^*) , then there is a $\bar{t} > 0$ and an $r > 0$ such that the following holds for all $t \in (0, \bar{t}]$: Is $(\hat{x}, \hat{y}) \in B_r(x^*) \times B_r(y^*)$ feasible for $NLP(t)$, then standard GCQ for $NLP(t)$ holds there.*

Proof. Since CC-CPLD holds in (x^*, y^*) and the constraints are continuously differentiable, there is a neighborhood $B_r(x^*)$ such that the gradients

$$\{\nabla g_i(x) \mid i \in I_g(x^*)\} \cup \{\{\nabla h_j(x) \mid j = 1, \dots, p\} \cup \{e_i \mid i \in I_0(x^*)\}\}$$

satisfy CPLD in every element $\hat{x} \in B_r(x^*)$, i.e. all subsets of these gradients, which are positively linearly dependent at \hat{x} , remain linearly dependent in a neighborhood of \hat{x} . Decreasing $r > 0$ if necessary, we can find a $\bar{t} > 0$ such that for all $t \in (0, \bar{t}]$ all elements $(\hat{x}, \hat{y}) \in B_r(x^*) \times B_r(y^*)$ feasible for $NLP(t)$ additionally satisfy

$$I_g(\hat{x}) \subseteq I_g(x^*) \quad \text{and} \quad I_\varphi^{0+}(\hat{x}, \hat{y}, t) \cup I_\varphi^{00}(\hat{x}, \hat{y}, t) \cup I_\varphi^{0+}(\hat{x}, \hat{y}, t) \cup I_\varphi^{00}(\hat{x}, \hat{y}, t) \subseteq I_0(x^*).$$

Now consider an arbitrary $t \in (0, \bar{t}]$ and an arbitrary element $(\hat{x}, \hat{y}) \in B_r(x^*) \times B_r(y^*)$ feasible for $NLP(t)$. The point (\hat{x}, \hat{y}) is then feasible for all $NLP(t, I, \tilde{I})$ with $I \subseteq I_\varphi^{00}(\hat{x}, \hat{y}; t)$ and $\tilde{I} \subseteq I_\varphi^{00}(\hat{x}, \hat{y}; t)$ (see the discussion preceding this theorem), and the gradients of the active inequality constraints and the equality constraints at that

point are

$$\begin{aligned}
& \left\{ \left\{ \begin{pmatrix} \nabla g_i(\hat{x}) \\ 0 \end{pmatrix} \mid i \in I_g(\hat{x}) \right\} \cup \left\{ \begin{pmatrix} 0 \\ -e \end{pmatrix} \mid \text{if } e^T \hat{y} = n - \varkappa \right\} \\
& \cup \left\{ \begin{pmatrix} 0 \\ e_i \end{pmatrix} \mid i \in I_\varphi^{+0}(\hat{x}, \hat{y}; t) \cup (I_\varphi^{00}(\hat{x}, \hat{y}; t) \setminus I) \cup I_\varphi^{-0}(\hat{x}, \hat{y}; t) \cup (I_\varphi^{00}(\hat{x}, \hat{y}; t) \setminus \tilde{I}) \right\} \\
& \cup \left\{ \begin{pmatrix} e_i \\ 0 \end{pmatrix} \mid i \in I_\varphi^{0+}(\hat{x}, \hat{y}; t) \cup I \right\} \cup \left\{ \begin{pmatrix} -e_i \\ 0 \end{pmatrix} \mid i \in I_\varphi^{0+}(\hat{x}, \hat{y}; t) \cup \tilde{I} \right\} \\
& \cup \left\{ \begin{pmatrix} 0 \\ e_i \end{pmatrix} \mid \hat{y}_i = 1 \right\} \cup \left\{ \begin{pmatrix} 0 \\ -e_i \end{pmatrix} \mid \hat{y}_i = 0 \right\} \\
& \cup \left\{ \begin{pmatrix} \nabla h_j(\hat{x}) \\ 0 \end{pmatrix} \mid j = 1, \dots, p \right\}.
\end{aligned}$$

Since all constraints depend either on x or on y but never on both, we can show that CPLD for $\text{NLP}(t, I, \tilde{I})$ is satisfied at (\hat{x}, \hat{y}) by considering them separately. All constraints depending on y are linear and therefore satisfy the CPLD condition. The constraints depending on x , in turn, satisfy CPLD due to the choice of r and \bar{t} .

Since CPLD implies ACQ, cf. Section 2, we thus have shown that

$$T_{Z(t, I, \tilde{I})}(\hat{x}, \hat{y}) = L_{Z(t, I, \tilde{I})}(\hat{x}, \hat{y})$$

holds for all $I \subseteq I_\varphi^{00}(\hat{x}, \hat{y}; t)$ and $\tilde{I} \subseteq I_\varphi^{00}(\hat{x}, \hat{y}; t)$. Combining this with (14), we obtain

$$T_{Z(t)}(\hat{x}, \hat{y})^* = \bigcap_{I \subseteq I_\varphi^{00}(\hat{x}, \hat{y}; t), \tilde{I} \subseteq I_\varphi^{00}(\hat{x}, \hat{y}; t)} L_{Z(t, I, \tilde{I})}(\hat{x}, \hat{y})^*. \quad (15)$$

In order to prove that (\hat{x}, \hat{y}) satisfies GCQ for $\text{NLP}(t)$, we have to prove the inclusion $T_{Z(t)}(\hat{x}, \hat{y})^* \subseteq L_{Z(t)}(\hat{x}, \hat{y})^*$. Hence our next step is to calculate the linearization cones and their polar cones. For $\text{NLP}(t)$, these are (cf. Lemma 5.1)

$$\begin{aligned}
L_{Z(t)}(\hat{x}, \hat{y}) = \{(d_x, d_y) \in \mathbb{R}^n \times \mathbb{R}^n \mid & \forall_{i \in I_g(\hat{x})} & \nabla g_i(\hat{x})^T d_x \leq 0, \\
& \forall_{i=1, \dots, p} & \nabla h_i(\hat{x})^T d_x = 0, \\
& \forall_{i \in I_\varphi^{0+}(\hat{x}, \hat{y}; t)} & e_i^T d_x \leq 0, \\
& \forall_{i \in I_\varphi^{0+}(\hat{x}, \hat{y}; t)} & e_i^T d_x \geq 0, \\
& & e^T d_y \geq 0 \text{ if } e^T \hat{y} = n - \varkappa, \\
& \forall_{i \in \{i \mid \hat{y}_i = 1\} \cup I_\varphi^{+0}(\hat{x}, \hat{y}; t) \cup I_\varphi^{-0}(\hat{x}, \hat{y}; t)} & e_i^T d_y \leq 0, \\
& \forall_{i \in \{i \mid \hat{y}_i = 0\}} & e_i^T d_y \geq 0\}
\end{aligned}$$

and

$$\begin{aligned}
L_{Z(t)}(\hat{x}, \hat{y})^* = \{(w_x, w_y) \in \mathbb{R}^n \times \mathbb{R}^n \mid & w_x = \sum_{i \in I_g(\hat{x})} \lambda_i \nabla g_i(\hat{x}) + \sum_{i=1}^p \mu_i \nabla h_i(\hat{x}) + \sum_{i=1}^n \gamma_i e_i, \\
& w_y = \delta e + \sum_{i=1}^n \nu_i e_i, \\
& \forall_{i \in I_g(\hat{x})} \lambda_i \geq 0, \\
& \forall_{i \in I_\varphi^{0+}(\hat{x}, \hat{y}; t)} \gamma_i \geq 0, \\
& \forall_{i \in I_\varphi^{0+}(\hat{x}, \hat{y}; t)} \gamma_i \leq 0, \\
& \forall_{\text{other } i} \gamma_i = 0, \\
& \delta \leq 0 \text{ and } \delta = 0 \text{ if } e^T \hat{y} > n - \varkappa, \\
& \forall_{i \in \{i \mid \hat{y}_i = 1\} \cup I_\varphi^{+0}(\hat{x}, \hat{y}; t) \cup I_\varphi^{-0}(\hat{x}, \hat{y}; t)} \nu_i \geq 0, \\
& \forall_{i \in \{i \mid \hat{y}_i = 0\}} \nu_i \leq 0, \\
& \forall_{\text{other } i} \nu_i = 0\}.
\end{aligned}$$

For $\text{NLP}(t, I, \tilde{I})$ the cones are

$$L_{Z(t, I, \tilde{I})}(\hat{x}, \hat{y}) = \{(d_x, d_y) \in \mathbb{R}^n \times \mathbb{R}^n \mid \begin{array}{ll} \forall_{i \in I_g(\hat{x})} & \nabla g_i(\hat{x})^T d_x \leq 0, \\ \forall_{i=1, \dots, p} & \nabla h_i(\hat{x})^T d_x = 0, \\ \forall_{i \in I_\varphi^+(\hat{x}, \hat{y}; t) \cup I} & e_i^T d_x \leq 0, \\ \forall_{i \in I_{\tilde{\varphi}}^+(\hat{x}, \hat{y}; t) \cup \tilde{I}} & e_i^T d_x \geq 0, \\ & e^T d_y \geq 0 \text{ if } e^T \hat{y} = n - \varkappa, \\ \forall_{i \in \{i \mid \hat{y}_i = 1\} \cup I_\varphi^+(\hat{x}, \hat{y}; t) \cup (I_\varphi^{00}(\hat{x}, \hat{y}; t) \setminus I)} & e_i^T d_y \leq 0, \\ \forall_{i \in \cup I_{\tilde{\varphi}}^-(\hat{x}, \hat{y}; t) \cup (I_{\tilde{\varphi}}^{00}(\hat{x}, \hat{y}; t) \setminus \tilde{I})} & e_i^T d_y \leq 0, \\ \forall_{i \in \{i \mid \hat{y}_i = 0\}} & e_i^T d_y \geq 0 \end{array}\}$$

and

$$L_{Z(t, I, \tilde{I})}(\hat{x}, \hat{y})^* = \{(w_x, w_y) \in \mathbb{R}^n \times \mathbb{R}^n \mid \begin{array}{l} w_x = \sum_{i \in I_g(\hat{x})} \lambda_i \nabla g_i(\hat{x}) + \sum_{i=1}^p \mu_i \nabla h_i(\hat{x}) + \sum_{i=1}^n \gamma_i e_i, \\ w_y = \delta e + \sum_{i=1}^n \nu_i e_i, \\ \forall_{i \in I_g(\hat{x})} \quad \lambda_i \geq 0, \\ \forall_{i \in I_\varphi^+(\hat{x}, \hat{y}; t) \cup I} \quad \gamma_i \geq 0, \\ \forall_{i \in I_{\tilde{\varphi}}^+(\hat{x}, \hat{y}; t) \cup \tilde{I}} \quad \gamma_i \leq 0, \\ \forall_{\text{other } i} \quad \gamma_i = 0, \\ \delta \leq 0 \text{ and } \delta = 0 \text{ if } e^T \hat{y} > n - \varkappa, \\ \forall_{i \in \{i \mid \hat{y}_i = 1\} \cup I_\varphi^+(\hat{x}, \hat{y}; t) \cup (I_\varphi^{00}(\hat{x}, \hat{y}; t) \setminus I)} \quad \nu_i \geq 0, \\ \forall_{i \in I_{\tilde{\varphi}}^-(\hat{x}, \hat{y}; t) \cup (I_{\tilde{\varphi}}^{00}(\hat{x}, \hat{y}; t) \setminus \tilde{I})} \quad \nu_i \geq 0, \\ \forall_{i \in \{i \mid \hat{y}_i = 0\}} \quad \nu_i \leq 0, \\ \forall_{\text{other } i} \quad \nu_i = 0 \end{array}\}.$$

We now put all these pieces together: Let $(w_x, w_y) \in T_{Z(t)}(\hat{x}, \hat{y})^*$ be arbitrarily given. In view of (15), this implies that (w_x, w_y) also belongs to $L_{Z(t, \emptyset, \emptyset)}(\hat{x}, \hat{y})^*$ and $L_{Z(t, I_\varphi^{00}(\hat{x}, \hat{y}; t), I_{\tilde{\varphi}}^{00}(\hat{x}, \hat{y}; t))}(\hat{x}, \hat{y})^*$. Taking into account that the coefficients γ_i and ν_i only occur separately in the expressions for w_x and w_y , respectively, this immediately gives $(w_x, w_y) \in L_{Z(t)}(\hat{x}, \hat{y})^*$. Altogether, this proves that GCQ for $\text{NLP}(t)$ is satisfied at (\hat{x}, \hat{y}) . \square

Note that, in order to obtain a similar result for the related regularization method for MPCCs, an LICQ-type condition had to be assumed in [16], whereas here only CC-CPLD is required.

6 Numerical Results

To test the approach presented in this paper, we consider cardinality constrained problems of the form

$$\begin{array}{ll} \min_x x^T Q x & \text{s.t. } \mu^T x \geq \rho, \\ & e^T x \leq 1, \\ & 0 \leq x_i \leq u_i \quad \forall i = 1, \dots, n, \\ & \|x\|_0 \leq \varkappa. \end{array}$$

This is a classical portfolio optimization problem where Q and μ are the covariance matrix and mean of n possible assets, respectively, and $e^T x \leq 1$ is a resource constraint, see e.g. [5, 9]. To create test examples, we take the same randomly generated data Q , μ , ρ , and u which were used by Frangioni and Gentile in [12] and which are available at their webpage <http://www.di.unipi.it/optimize/Data/MV.html>. This gives us 30 test instances for each of the three dimensions $n = 200, 300, 400$. In addition, we consider for every instance the three cardinality constraints defined by $\varkappa = 5, 10, 20$ and thus end up with 270 test problems.

We implemented the following three solution strategies in MATLAB: First, we followed [5] (see also Remark 3.10, where y_i was replaced by $1 - y_i$ for an easier comparison with our approach) and reformulated the cardinality constrained problem using binary constraints as

$$\begin{aligned} \min_{x,y} x^T Q x \quad \text{s.t.} \quad & \mu^T x \geq \rho, \\ & e^T x \leq 1, \\ & 0 \leq x_i \leq u_i y_i \quad \forall i = 1, \dots, n, \\ & y_i \in \{0, 1\} \quad \forall i = 1, \dots, n, \\ & e^T y \leq \varkappa. \end{aligned}$$

We tried to solve these mixed-integer problems directly using `GUROBI 5.6.2` via the provided `MATLAB` interface. `GUROBI` is a solver specialized in mixed-integer linear and quadratic optimization problems (see [14]). To avoid serious memory problems experienced earlier, we set the parameter `MIPFocus = 1` for `GUROBI` to spend more effort on finding good feasible solutions quickly and less effort on proving optimality. Additionally, we set `TimeLimit = 600` to limit the calculation time by 10 minutes. This may sound very restrictive, but in our numerical experiments, we observed that `GUROBI` most often found a good solution within the first 60 seconds and then spent the remaining time on proving optimality. All computations were performed on a hyper threading enabled computer with 6 cores, so the 600 seconds correspond to approximately two hours of computation time.

Our second approach is based on the relaxed problem (4), which in this case is:

$$\begin{aligned} \min_{x,y} x^T Q x \quad \text{s.t.} \quad & \mu^T x \geq \rho, \\ & e^T x \leq 1, \\ & 0 \leq x_i \leq u_i \quad \forall i = 1, \dots, n, \\ & e^T y \geq n - \varkappa, \\ & x_i y_i = 0 \quad \forall i = 1, \dots, n, \\ & 0 \leq y_i \leq 1 \quad \forall i = 1, \dots, n. \end{aligned} \tag{16}$$

This problem has orthogonality/complementarity-type constraints. Since it can still be viewed as a standard nonlinear optimization problem, we applied `TOMLAB` version of `SNOPT` to solving (16). `SNOPT` is based on an SQP approach combined with an augmented Lagrangian merit function [13].

Finally, we implemented the regularization method from the previous section as well. It replaces the orthogonality condition $x_i y_i = 0$ by the two inequalities $\varphi(x_i, y_i; t) \leq 0$ and $\tilde{\varphi}(x_i, y_i; t) \leq 0$. Due to the presence of the constraint $x_i \geq 0$ in our test problems, we could ignore the inequality $\tilde{\varphi}(x_i, y_i; t) \leq 0$. Nonetheless, it is still included to make the method applicable to more general instances. We solved

the regularized problems $NLP(t)$ iteratively using the TOMLAB version of SNOPT, beginning with the regularization parameter $t_0 = 1$. In every iteration, we decreased the regularization parameter by $t_{k+1} = 0.01 t_k$ and used the solution of the previous iteration as initial value. We stopped the algorithm if either the regularization parameter became too small, i.e. $t_k < 10^{-8}$, or the violation of the orthogonality conditions was sufficiently small, i.e. $\max_{i=1,\dots,n} |x_i y_i| \leq 10^{-6}$. The feasibility of the other constraints (all of which are linear) never caused any problems.

We used $x^0 = (0, \dots, 0)^T$ and $y^0 = (1, \dots, 1)^T$ as initial values for all three methods. In the following, the computational results are grouped by n and \varkappa . The average computation time in seconds and the average orthogonality violation can be found in Table 1. Here, the orthogonality violation means $\max_{i=1,\dots,n} |x_i(1 - y_i)|$ for GUROBI and $\max_{i=1,\dots,n} |x_i y_i|$ for the other two approaches. Since the violations of the linear and box constraints are, if existent, a lot smaller than the violation of the orthogonality constraint, we chose not to display them.

		200			300			400		
		5	10	20	5	10	20	5	10	20
GUROBI	T	600.2	600.2	600.1	580.8	598.4	580.8	596.8	600.1	600.1
	v	0	0	0	0	0	0	0	0	0
relaxation	T	0.0608	0.0592	0.0551	0.1743	0.1587	0.1089	0.2499	0.2129	0.1981
	v	10^{-12}	10^{-12}	10^{-12}	$2 \cdot 10^{-12}$	$2 \cdot 10^{-12}$	$2 \cdot 10^{-12}$	$3 \cdot 10^{-12}$	$3 \cdot 10^{-12}$	$3 \cdot 10^{-12}$
regularization	T	1.3562	1.4810	1.9636	3.3107	3.6135	3.8653	7.0481	7.3284	8.0956
	v	10^{-6}	10^{-6}	10^{-6}	10^{-6}	10^{-6}	10^{-6}	10^{-6}	10^{-6}	10^{-6}

Table 1: Average computation time T and average orthogonality violation v

Figure 5 illustrates the different objective function values found by the three methods. For every test example, we divided the values found by all three methods by the one found by GUROBI and plotted the resulting factors, hence the GUROBI lines are normalized to one. Thus, a value of 10 for the relaxed approach would mean that, for this example, the relaxed approach found a solution where the objective function value was 10 times as big as the one found by GUROBI. The order in which the results for the 30 test examples are plotted for each n and \varkappa is chosen such that the normalized values obtained for the regularization method are ascending. This way it is easy to see that, e.g. for $n = 200$ and $\varkappa = 20$, the regularization method obtains function values almost equal to the ones found by GUROBI in more than 90% of the considered problems. More detailed results for each test run can be found in the tables given in the appendix of the preprint version of this paper [7].

If we compare the average computation time, we see that the relaxed approach is the fastest, followed by the regularized method. Whenever the average computation time of GUROBI is less than 600 seconds, GUROBI managed to solve one of the 30 test examples in less than 10 minutes.

The orthogonality constraints also hold. Due to the declaration of y_i as a binary variable, GUROBI produces no measurable violation of the orthogonality. The slightly higher orthogonality violation of the regularization method compared to the relaxation approach is a direct consequence of the fact that we terminated the regularization method as soon as this violation was at most 10^{-6} . Nonetheless, if

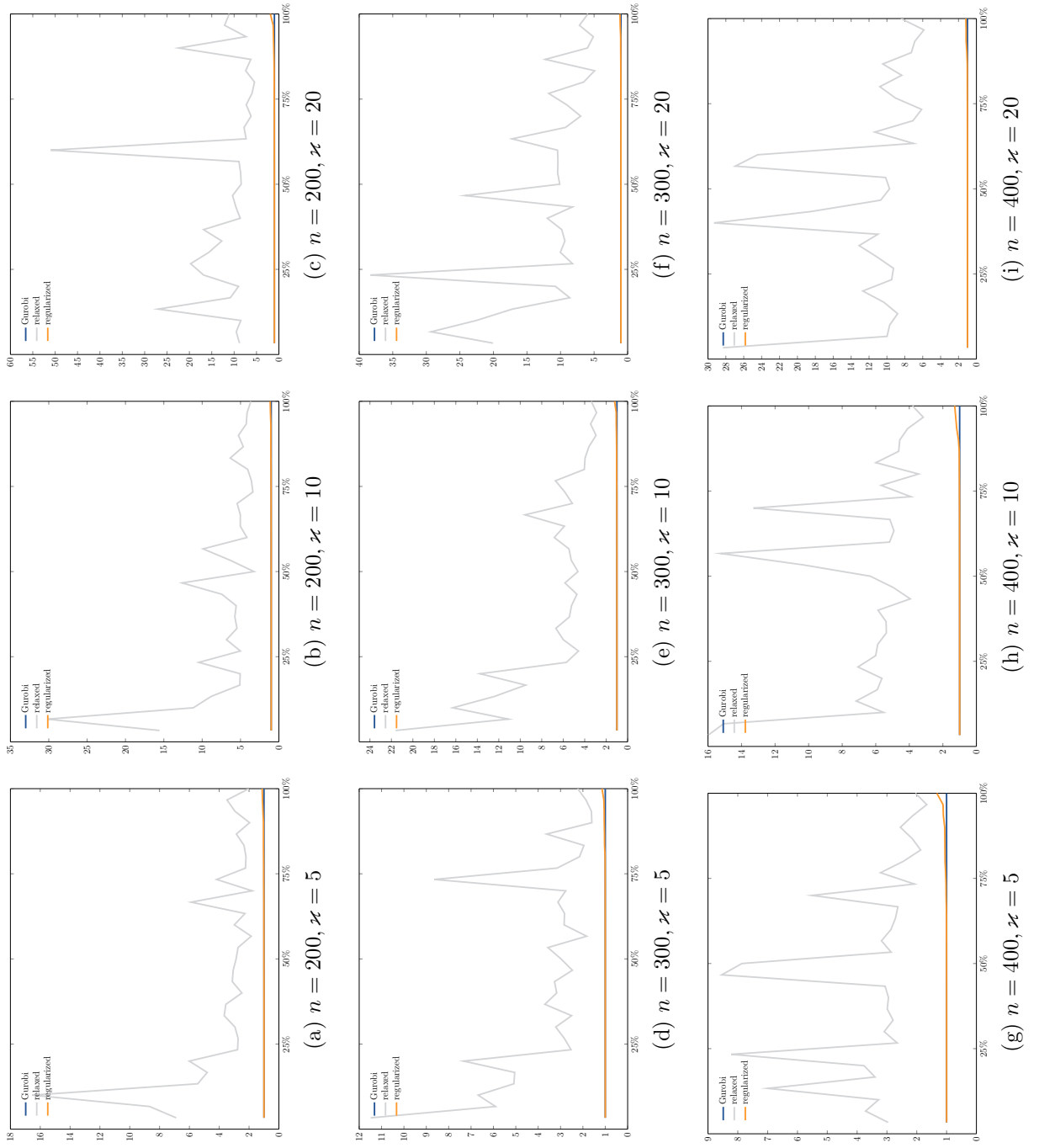


Figure 5: Normalized objective function values for all examples

we consider the solutions found by the regularization method and eliminate the \varkappa largest components, the remaining entries, which should be zero, exceed 10^{-6} only in 1 out of 270 examples.

The most interesting results are the objective function values in the solutions. Even though we allowed **GUROBI** only to run for 600 seconds, it managed to find the best value in almost all examples. However, when we compare the relaxation and regularization approach, we see a huge difference. Whereas the value found by the relaxation approach is always significantly worse than the one found by **GUROBI** (in more than 80% of the examples between 2.5 and 14 times as big), the regularization method behaves almost as good as **GUROBI**. In 71.5% of the examples, it manages to find a similar (in the sense that the function value is at most 1% worse than the one computed by **GUROBI**) or even slightly better value than **GUROBI**. In all test examples, the value is less than 2 times as big as **GUROBI**'s. Hence, although both methods in their present implementation cannot completely keep up with the professional (global!) solver **GUROBI**, the regularization method shows a very promising behavior whereas relaxing the cardinality constrained problem without additional regularization seems less successful.

One possible reason for the better results of the regularization method is that the regularized feasible set is bigger than the one of the relaxed problem and therefore the method is probably less dependent on the initial value. In order to illustrate this effect, we consider the problem

$$\min_x x_1 + 10x_2 \quad \text{s.t.} \quad (x_1 - \frac{1}{2})^2 + (x_2 - 1)^2 \leq 1, \quad \|x\|_0 \leq 1.$$

The feasible set then consists of a part of the x_2 -axis including the local minimizer $(0, 1 - \frac{1}{2}\sqrt{3})^T$ and the isolated global minimizer $(\frac{1}{2}, 0)^T$. We discretized the rectangle $[-1, \frac{3}{2}] \times [-\frac{1}{2}, 2]$ and started both the relaxation approach and the regularization method in each of the resulting 441 node points. As expected, the regularization method converged to the global minimizer in all 441 cases, whereas the relaxation approach found the global solution only in 204 cases, which is less than 50%.

7 Final Remarks

This paper presents an NLP-formulation of the cardinality-constrained optimization problem. Several theoretical results regarding minima and stationary points as well as a suitable regularization method are presented. We believe that the NLP-reformulation given here can be used as the basis for several other developments for cardinality-constrained problems. Here we only mention two points that will be part of our future research: First, instead of extending the regularization scheme from [16] to cardinality constraints, it seems more obvious to apply the regularization from [26] to cardinality constraints. To some extent, this has been done in the context of sparse optimization problems in [11] for a simple example. We tried to apply this approach for more general problems, but failed so far due to some complications with certain Lagrange multipliers. Second, taking into account that we derived the NLP-reformulation as a relaxation of a mixed-integer problem, there should be a good chance to use techniques from binary problems in order to get closer to a global minimum.

References

- [1] R. ANDREANI, J.M. MARTÍNEZ, AND M.L. SCHUVERDT: *The CPLD condition of Qi and Wei implies the quasinormality qualification*. Journal of Optimization Theory and Applications 125, 2005, pp. 473–485.
- [2] M.S. BAZARAA AND C.M. SHETTY: *Foundations of Optimization*. Lecture Notes in Economics and Mathematical Systems, Springer, 1976.
- [3] D.P. BERTSEKAS AND A.E. OZDAGLAR: *Pseudonormality and a Lagrange multiplier theory for constrained optimization*. Journal of Optimization Theory and Applications 114, 2002, pp. 287–343.
- [4] D. BERTSIMAS AND R. SHIODA: *Algorithm for cardinality-constrained quadratic optimization*. Computational Optimization and Applications 43, 2009, pp. 1–22.
- [5] D. BIENSTOCK: *Computational study of a family of mixed-integer quadratic programming problems*. Mathematical Programming 74, 1996, pp. 121–140.
- [6] O. BURDAKOV, C. KANZOW, AND A. SCHWARTZ: *On a reformulation of mathematical programs with cardinality constraints*. In D.Y. GAO, N. RUAN AND W.X. XING (eds): *Advances in Global Optimization*. Proc. of the 3rd World Congress of Global Optimization (July 8-12, 2013, Huangshan, China), Springer, 2015, pp. 3–14.
- [7] O. BURDAKOV, C. KANZOW, AND A. SCHWARTZ: *Mathematical programs with cardinality constraints: reformulation by complementarity-type conditions and a regularization method*. Preprint 324, Institute of Mathematics, University of Würzburg, Würzburg, July 2014.
- [8] E.J. CANDÈS AND M.B. WAKIN: *An introduction to compressive sampling*. IEEE Signal Processing Magazine 25, 2008, pp. 21–30.
- [9] D. DI LORENZO, G. LIUZZI, F. RINALDI, F. SCHOEN, AND M. SCIANDRONE: *A concave optimization-based approach for sparse portfolio selection*. Optimization Methods and Software 27, 2012, pp. 983–1000.
- [10] F. FACCHINEI AND J.-S. PANG: *Finite-Dimensional Variational Inequalities and Complementarity Problems, Volumes I and II*. Springer Series in Operations Research, Springer, New York, 2003.
- [11] M. FENG, J.E. MITCHELL, J.-S. PANG, X. SHEN, AND A. WÄCHTER: *Complementarity formulation of ℓ_0 -norm optimization problems*. Technical Report, Industrial Engineering and Management Sciences, Northwestern University, Evanston, IL, USA, September 2013.
- [12] A. FRANGIONI AND C. GENTILE: *SDP diagonalizations and perspective cuts for a class of nonseparable MIQP*. Operations Research Letters 35, 2007, pp. 181–185.

- [13] P.E. GILL, W. MURRAY, AND M.A. SAUNDERS: *SNOPT: An SQP algorithm for large-scale constrained optimization*. SIAM Journal on Optimization 12, 2002, pp. 979–1006.
- [14] GUROBI OPTIMIZATION, INC.: *Gurobi Optimizer Reference Manual* <http://www.gurobi.com>, 2014.
- [15] R. JANIN: *Directional derivative of the marginal function in nonlinear programming*. Mathematical Programming Study 21, 1984, pp. 110–126.
- [16] C. KANZOW AND A. SCHWARTZ: *A new regularization method for mathematical programs with complementarity constraints with strong convergence properties*. SIAM Journal on Optimization 23, 2013, pp. 770–798.
- [17] Z.-Q. LUO, J.-S. PANG, AND D. RALPH: *Mathematical Programs with Equilibrium Constraints*. Cambridge University Press, Cambridge, New York, Melbourne, 1996.
- [18] A. MILLER: *Subset Selection in Regression*. Chapman & Hall/CRC, Boca Raton, second edition 2002.
- [19] W. MURRAY AND H. SHEK: *A local relaxation method for the cardinality constrained portfolio optimization problem*. Computational Optimization and Applications 53, 2012, pp. 681–709.
- [20] J. NOCEDAL AND S.J. WRIGHT: *Numerical Optimization*. Springer Series in Operations Research, Springer, New York, 1999.
- [21] J. V. OUTRATA, M. KOČVARA, AND J. ZOWE: *Nonsmooth Approach to Optimization Problems with Equilibrium Constraints*. Kluwer Academic Publishers, Dordrecht, The Netherlands, 1998.
- [22] L. QI AND Z. WEI: *On the constant positive linear dependence constraint qualification and its application to SQP methods*. SIAM Journal on Optimization 10, 2000, pp. 963–981.
- [23] R.T. ROCKAFELLAR AND R.J.-B. WETS: *Variational Analysis*. A Series of Comprehensive Studies in Mathematics, Vol. 317, Springer, 1998.
- [24] R. RUIZ-TORRUBIANO, S. GARCÍA-MORATILLA, AND A. SUÁREZ: *Optimization problems with cardinality constraints*. In Y. TENNE AND C.-K. GOH (eds.): *Computational Intelligence in Optimization*. Springer, 2010, pp. 105–130.
- [25] H. SCHEEL AND S. SCHOLTES: *Mathematical programs with complementarity constraints: Stationarity, optimality, and sensitivity*. Mathematics of Operations Research 25, 2000, pp. 1–22.
- [26] S. SCHOLTES: *Convergence properties of a regularization scheme for mathematical programs with complementarity constraints*. SIAM Journal on Optimization 11, 2001, pp. 918–936.

- [27] S. STEFFENSEN AND M. ULBRICH: *A new regularization scheme for mathematical programs with equilibrium constraints*. SIAM Journal on Optimization 20, 2010, pp. 2504–2539.
- [28] D. SUN AND L. QI: *On NCP-functions*. Computational Optimization and Applications 13, 1999, pp. 201–220.
- [29] X. SUN, X. ZHENG, AND D. LI: *Recent advances in mathematical programming with semi-continuous variables and cardinality constraint*. Journal of the Operations Research Society of China 1, 2013, pp. 55–77.
- [30] X. ZHENG, X. SUN, D. LI, AND J. SUN: *Successive convex approximations to cardinality-constrained convex programs: a piecewise-linear DC approach*. Computational Optimization and Applications, to appear (DOI: 10.1007/s10589-013-9582-3).

Example	f_{Gurobi}	$f_{relaxed}$	$T_{relaxed}$	$v_{relaxed}$	$f_{regularized}$	$T_{regularized}$	$v_{regularized}$
orl200-005-a	34.04	106.32	0.183	3.38e-12	34.07	1.20	1.00e-06
orl200-005-b	42.10	149.64	0.056	2.82e-12	42.08	1.51	1.00e-06
orl200-005-c	71.48	177.22	0.058	6.43e-12	71.46	1.86	1.00e-06
orl200-005-d	37.37	102.12	0.068	4.82e-12	37.35	1.22	1.00e-06
orl200-005-e	33.25	91.09	0.051	0.00e+00	33.43	1.18	1.00e-06
orl200-005-f	67.73	158.22	0.069	7.66e-13	69.85	1.89	1.00e-06
orl200-005-g	71.85	204.87	0.051	0.00e+00	74.13	1.69	1.00e-06
orl200-005-h	89.11	309.88	0.040	0.00e+00	97.88	1.66	1.00e-06
orl200-005-i	10.44	90.48	0.040	0.00e+00	10.43	1.30	1.00e-06
orl200-005-j	38.24	114.31	0.057	1.44e-12	38.49	1.30	1.00e-06
orl200-05-a	17.95	105.67	0.046	0.00e+00	18.08	1.15	1.00e-06
orl200-05-b	10.34	170.99	0.040	0.00e+00	10.33	1.30	1.00e-06
orl200-05-c	12.01	65.33	0.051	0.00e+00	12.00	1.18	1.00e-06
orl200-05-d	97.57	191.58	0.064	0.00e+00	100.71	1.08	1.00e-06
orl200-05-e	108.59	217.99	0.074	4.50e-15	121.51	1.17	1.00e-06
orl200-05-f	81.77	146.85	0.070	0.00e+00	82.76	1.40	1.00e-06
orl200-05-g	5.76	24.02	0.043	0.00e+00	5.86	1.24	1.00e-06
orl200-05-h	21.20	64.97	0.060	0.00e+00	21.26	1.04	1.00e-06
orl200-05-i	20.63	59.12	0.055	0.00e+00	20.72	1.11	1.00e-06
orl200-05-j	64.19	188.68	0.048	0.00e+00	68.47	1.49	1.00e-06
pard200-a	141.03	415.51	0.057	4.28e-12	140.97	1.42	1.00e-06
pard200-b	381.19	840.74	0.067	2.30e-15	389.90	1.10	1.00e-06
pard200-c	356.04	660.29	0.069	1.68e-13	358.10	1.19	1.00e-06
pard200-d	342.41	766.65	0.069	8.06e-15	348.44	1.31	1.00e-06
pard200-e	101.80	281.86	0.052	2.99e-12	101.75	1.43	1.00e-06
pard200-f	25.09	172.66	0.046	0.00e+00	25.06	1.32	1.00e-06
pard200-g	324.54	736.63	0.077	0.00e+00	326.90	1.73	1.00e-06
pard200-h	55.59	266.99	0.047	0.00e+00	55.55	1.46	1.00e-06
pard200-i	130.41	478.37	0.074	2.55e-12	130.35	1.42	1.00e-06
pard200-j	71.30	428.30	0.041	0.00e+00	71.26	1.34	1.00e-06

Table 2: Results for $n = 200$ and $\varkappa = 5$

Example	f_{Gurobi}	$f_{relaxed}$	$T_{relaxed}$	$v_{relaxed}$	$f_{regularized}$	$T_{regularized}$	$v_{regularized}$
orl200-005-a	18.52	106.32	0.151	3.38e-12	18.51	1.29	1.00e-06
orl200-005-b	23.55	149.64	0.053	2.82e-12	23.58	1.47	1.00e-06
orl200-005-c	38.18	177.22	0.053	6.43e-12	39.89	1.85	1.00e-06
orl200-005-d	20.35	102.12	0.065	4.82e-12	20.34	1.19	1.00e-06
orl200-005-e	17.91	91.09	0.057	0.00e+00	17.90	1.54	1.00e-06
orl200-005-f	37.22	158.22	0.056	7.66e-13	38.95	1.83	1.00e-06
orl200-005-g	40.79	204.87	0.051	0.00e+00	41.07	1.77	1.00e-06
orl200-005-h	48.85	309.88	0.053	0.00e+00	50.65	1.88	1.00e-06
orl200-005-i	5.82	90.48	0.041	0.00e+00	5.81	1.36	1.00e-06
orl200-005-j	21.00	114.31	0.054	1.44e-12	21.23	1.38	1.00e-06
orl200-05-a	10.12	105.67	0.040	0.00e+00	10.12	1.51	1.00e-06
orl200-05-b	5.66	170.99	0.042	0.00e+00	5.66	1.50	1.00e-06
orl200-05-c	6.61	65.33	0.042	0.00e+00	6.62	1.43	1.00e-06
orl200-05-d	53.53	191.58	0.136	0.00e+00	54.46	1.59	1.00e-06
orl200-05-e	59.68	217.99	0.064	4.50e-15	67.55	1.20	1.00e-08
orl200-05-f	45.24	146.85	0.064	0.00e+00	45.27	1.79	1.00e-06
orl200-05-g	3.23	24.02	0.040	0.00e+00	3.23	1.30	1.00e-06
orl200-05-h	11.90	64.97	0.053	0.00e+00	11.90	1.08	1.00e-06
orl200-05-i	11.75	59.12	0.055	0.00e+00	11.83	1.15	1.00e-06
orl200-05-j	35.80	188.68	0.052	0.00e+00	37.46	1.58	1.00e-06
pard200-a	74.63	415.51	0.054	4.28e-12	74.61	1.50	1.00e-06
pard200-b	207.02	840.74	0.062	2.30e-15	210.84	1.24	1.00e-06
pard200-c	194.90	660.29	0.066	1.68e-13	197.03	1.40	1.00e-06
pard200-d	184.07	766.65	0.063	8.06e-15	184.41	1.46	1.00e-06
pard200-e	55.84	281.86	0.053	2.99e-12	55.81	1.44	1.00e-06
pard200-f	13.69	172.66	0.043	0.00e+00	13.69	1.31	1.00e-06
pard200-g	177.76	736.63	0.071	0.00e+00	194.61	2.33	1.00e-06
pard200-h	30.22	266.99	0.042	0.00e+00	30.21	1.51	1.00e-06
pard200-i	70.03	478.37	0.055	2.55e-12	70.00	1.29	1.00e-06
pard200-j	38.42	428.30	0.043	0.00e+00	38.40	1.26	1.00e-06

Table 3: Results for $n = 200$ and $\varkappa = 10$

Example	f_{Gurobi}	$f_{relaxed}$	$T_{relaxed}$	$v_{relaxed}$	$f_{regularized}$	$T_{regularized}$	$v_{regularized}$
orl200-005-a	11.06	106.32	0.153	3.38e-12	11.08	1.91	1.00e-06
orl200-005-b	13.79	149.64	0.053	2.82e-12	13.78	2.14	1.00e-06
orl200-005-c	22.76	177.22	0.053	6.43e-12	22.94	2.43	1.00e-06
orl200-005-d	12.01	102.12	0.055	4.82e-12	12.00	1.72	1.00e-06
orl200-005-e	10.54	91.09	0.051	0.00e+00	10.55	1.47	1.00e-06
orl200-005-f	21.61	158.22	0.055	7.66e-13	21.74	2.22	1.00e-06
orl200-005-g	23.99	204.87	0.049	0.00e+00	24.06	2.26	1.00e-06
orl200-005-h	27.93	309.88	0.043	0.00e+00	53.10	2.01	1.00e-06
orl200-005-i	3.35	90.48	0.040	0.00e+00	3.35	1.81	1.00e-06
orl200-005-j	12.00	114.31	0.052	1.44e-12	12.00	1.97	1.00e-06
orl200-05-a	6.28	105.67	0.040	0.00e+00	6.28	1.69	1.00e-06
orl200-05-b	3.35	170.99	0.040	0.00e+00	3.37	1.58	1.00e-06
orl200-05-c	3.88	65.33	0.042	0.00e+00	3.88	1.83	1.00e-06
orl200-05-d	30.84	191.58	0.064	0.00e+00	31.14	1.74	1.00e-06
orl200-05-e	34.78	217.99	0.066	4.50e-15	37.61	1.88	1.00e-06
orl200-05-f	26.98	146.85	0.065	0.00e+00	28.02	4.11	1.00e-06
orl200-05-g	1.88	24.02	0.041	0.00e+00	1.88	2.08	1.00e-06
orl200-05-h	7.21	64.97	0.053	0.00e+00	7.21	1.70	1.00e-06
orl200-05-i	7.02	59.12	0.052	0.00e+00	7.03	1.70	1.00e-06
orl200-05-j	21.15	188.68	0.042	0.00e+00	21.24	1.72	1.00e-06
pard200-a	40.12	415.51	0.053	4.28e-12	40.19	1.52	1.00e-06
pard200-b	115.16	840.74	0.061	2.30e-15	117.65	1.64	1.00e-06
pard200-c	109.99	660.29	0.066	1.68e-13	113.65	1.61	1.00e-06
pard200-d	103.32	766.65	0.061	8.06e-15	108.17	1.75	1.00e-06
pard200-e	32.04	281.86	0.062	2.99e-12	32.02	1.73	1.00e-06
pard200-f	7.71	172.66	0.041	0.00e+00	8.79	1.69	1.00e-06
pard200-g	100.42	736.63	0.058	0.00e+00	121.11	3.82	3.30e-06
pard200-h	17.06	266.99	0.041	0.00e+00	17.06	1.56	1.00e-06
pard200-i	39.42	478.37	0.060	2.55e-12	50.28	1.92	1.00e-06
pard200-j	21.72	428.30	0.042	0.00e+00	21.71	1.70	1.00e-06

Table 4: Results for $n = 200$ and $\varkappa = 20$

Example	f_{Gurobi}	$f_{relaxed}$	$T_{relaxed}$	$v_{relaxed}$	$f_{regularized}$	$T_{regularized}$	$v_{regularized}$
orl300-005-a	207.76	447.34	0.142	0.00e+00	209.14	2.25	1.00e-06
orl300-005-b	99.37	295.89	0.112	8.17e-12	99.32	3.16	1.00e-06
orl300-005-c	43.60	123.37	0.118	0.00e+00	43.57	3.32	1.00e-06
orl300-005-d	168.98	377.59	0.165	0.00e+00	193.54	3.73	1.00e-06
orl300-005-e	95.11	344.49	0.126	8.70e-12	98.43	3.27	1.00e-06
orl300-005-f	62.54	231.49	0.144	1.44e-12	62.50	3.34	1.00e-06
orl300-005-g	39.10	286.91	0.111	0.00e+00	39.06	3.33	1.00e-06
orl300-005-h	45.16	145.13	0.144	1.17e-12	45.12	3.16	1.00e-06
orl300-005-i	38.44	195.40	0.115	0.00e+00	38.40	3.57	1.00e-06
orl300-005-j	15.27	175.32	0.114	0.00e+00	15.24	2.88	1.00e-06
orl300-05-a	157.74	255.65	0.166	7.30e-16	165.49	2.42	1.00e-06
orl300-05-b	111.43	314.20	0.108	4.04e-13	111.68	4.08	1.00e-06
orl300-05-c	53.18	173.87	0.121	4.35e-12	53.14	2.92	1.00e-06
orl300-05-d	113.85	315.02	0.097	0.00e+00	114.15	3.72	1.00e-06
orl300-05-e	33.26	103.65	0.136	0.00e+00	33.34	2.84	1.00e-06
orl300-05-f	32.63	103.00	0.120	0.00e+00	32.80	2.92	1.00e-06
orl300-05-g	173.63	322.97	0.140	3.28e-14	184.76	2.58	1.00e-06
orl300-05-h	33.86	85.67	0.115	0.00e+00	33.83	3.51	1.00e-06
orl300-05-i	179.36	286.79	0.148	1.00e-14	187.56	2.37	1.00e-06
orl300-05-j	139.09	254.75	0.133	0.00e+00	139.04	3.08	1.00e-06
pard300-a	64.79	560.25	0.109	0.00e+00	64.97	3.58	1.00e-06
pard300-b	232.07	573.31	0.142	5.22e-12	231.94	4.04	1.00e-06
pard300-c	375.48	1066.79	0.125	2.26e-14	375.52	3.45	1.00e-06
pard300-d	195.90	620.99	0.146	2.14e-12	195.77	3.49	1.00e-06
pard300-e	113.96	575.33	0.109	0.00e+00	113.86	3.79	1.00e-06
pard300-f	53.47	315.72	0.083	0.00e+00	53.40	3.69	1.00e-06
pard300-g	467.23	912.80	0.157	0.00e+00	481.89	4.16	1.00e-06
pard300-h	81.69	545.84	0.098	0.00e+00	81.60	3.59	1.00e-06
pard300-i	310.31	1106.52	1.544	1.17e-11	310.15	3.56	1.00e-06
pard300-j	150.82	377.76	0.141	2.45e-12	150.71	3.53	1.00e-06

Table 5: Results for $n = 300$ and $\varkappa = 5$

Example	f_{Gurobi}	$f_{relaxed}$	$T_{relaxed}$	$v_{relaxed}$	$f_{regularized}$	$T_{regularized}$	$v_{regularized}$
orl300-005-a	110.95	447.34	0.157	0.00e+00	113.84	3.42	1.00e-06
orl300-005-b	54.16	295.89	0.137	8.17e-12	54.25	3.65	1.00e-06
orl300-005-c	23.62	123.37	0.108	0.00e+00	23.62	3.61	1.00e-06
orl300-005-d	95.16	377.59	0.141	0.00e+00	97.74	4.05	1.00e-06
orl300-005-e	50.41	344.49	0.119	8.70e-12	50.52	3.56	1.00e-06
orl300-005-f	34.43	231.49	0.116	1.44e-12	35.15	3.56	1.00e-06
orl300-005-g	20.89	286.91	0.092	0.00e+00	20.87	3.20	1.00e-06
orl300-005-h	24.65	145.13	0.117	1.17e-12	24.75	3.74	1.00e-06
orl300-005-i	20.44	195.40	0.083	0.00e+00	20.54	3.71	1.00e-06
orl300-005-j	8.11	175.32	0.081	0.00e+00	8.10	2.88	1.00e-06
orl300-05-a	86.81	255.65	0.133	7.30e-16	90.40	2.70	1.00e-06
orl300-05-b	59.80	314.20	0.104	4.04e-13	59.87	4.14	1.00e-06
orl300-05-c	29.01	173.87	0.114	4.35e-12	29.00	2.88	1.00e-06
orl300-05-d	61.16	315.02	0.088	0.00e+00	61.48	3.81	1.00e-06
orl300-05-e	18.16	103.65	0.112	0.00e+00	18.15	2.92	1.00e-06
orl300-05-f	17.62	103.00	0.104	0.00e+00	17.74	3.63	1.00e-06
orl300-05-g	93.61	322.97	0.142	3.28e-14	99.46	2.08	1.00e-06
orl300-05-h	18.53	85.67	0.124	0.00e+00	18.54	3.84	1.00e-06
orl300-05-i	99.04	286.79	0.153	1.00e-14	105.29	2.84	1.00e-06
orl300-05-j	75.18	254.75	0.141	0.00e+00	91.40	5.87	1.00e-06
pard300-a	34.41	560.25	0.084	0.00e+00	34.37	3.55	1.00e-06
pard300-b	125.26	573.31	0.117	5.22e-12	125.19	4.11	1.00e-06
pard300-c	196.50	1066.79	0.125	2.26e-14	196.41	3.56	1.00e-06
pard300-d	106.35	620.99	0.121	2.14e-12	106.41	3.75	1.00e-06
pard300-e	60.59	575.33	0.086	0.00e+00	60.54	3.99	1.00e-06
pard300-f	28.43	315.72	0.083	0.00e+00	28.40	3.79	1.00e-06
pard300-g	253.06	912.80	0.139	0.00e+00	260.94	4.35	1.00e-06
pard300-h	44.00	545.84	1.392	0.00e+00	43.96	3.75	1.00e-06
pard300-i	165.49	1106.52	0.127	1.17e-11	165.41	3.53	1.00e-06
pard300-j	80.01	377.76	0.120	2.45e-12	80.03	3.92	1.00e-06

Table 6: Results for $n = 300$ and $\varkappa = 10$

Example	f_{Gurobi}	$f_{relaxed}$	$T_{relaxed}$	$v_{relaxed}$	$f_{regularized}$	$T_{regularized}$	$v_{regularized}$
orl300-005-a	62.25	447.34	0.123	0.00e+00	69.12	5.62	1.00e-06
orl300-005-b	30.15	295.89	0.106	8.17e-12	30.13	3.54	1.00e-06
orl300-005-c	13.20	123.37	0.118	0.00e+00	13.20	3.82	1.00e-06
orl300-005-d	53.97	377.59	0.137	0.00e+00	54.27	4.03	1.00e-06
orl300-005-e	28.06	344.49	0.110	8.70e-12	28.78	3.50	1.00e-06
orl300-005-f	19.67	231.49	0.117	1.44e-12	19.86	4.20	1.00e-06
orl300-005-g	11.84	286.91	0.084	0.00e+00	11.85	3.26	1.00e-06
orl300-005-h	13.92	145.13	0.109	1.17e-12	13.93	4.00	1.00e-06
orl300-005-i	11.34	195.40	0.084	0.00e+00	11.37	3.95	1.00e-06
orl300-005-j	4.58	175.32	0.080	0.00e+00	4.57	2.97	1.00e-06
orl300-05-a	50.01	255.65	0.137	7.30e-16	52.01	3.21	1.00e-06
orl300-05-b	34.60	314.20	0.107	4.04e-13	34.86	4.73	1.00e-06
orl300-05-c	16.65	173.87	0.108	4.35e-12	16.68	3.01	1.00e-06
orl300-05-d	33.98	315.02	0.087	0.00e+00	34.09	3.74	1.00e-06
orl300-05-e	10.24	103.65	0.108	0.00e+00	10.25	2.90	1.00e-06
orl300-05-f	9.92	103.00	0.108	0.00e+00	9.93	3.72	1.00e-06
orl300-05-g	54.00	322.97	0.143	3.28e-14	55.99	3.36	1.00e-06
orl300-05-h	10.42	85.67	0.101	0.00e+00	10.42	3.72	1.00e-06
orl300-05-i	58.27	286.79	0.126	1.00e-14	59.32	3.23	1.00e-06
orl300-05-j	42.99	254.75	0.129	0.00e+00	49.16	3.49	1.00e-06
pard300-a	19.13	560.25	0.102	0.00e+00	19.11	3.65	1.00e-06
pard300-b	69.81	573.31	0.109	5.22e-12	69.77	4.39	1.00e-06
pard300-c	106.37	1066.79	0.116	2.26e-14	106.32	3.94	1.00e-06
pard300-d	57.76	620.99	0.118	2.14e-12	57.72	4.37	1.00e-06
pard300-e	33.50	575.33	0.081	0.00e+00	33.47	4.16	1.00e-06
pard300-f	15.74	315.72	0.082	0.00e+00	15.72	4.38	1.00e-06
pard300-g	139.35	912.80	0.127	0.00e+00	141.19	4.55	1.00e-06
pard300-h	24.23	545.84	0.082	0.00e+00	24.21	4.51	1.00e-06
pard300-i	92.41	1106.52	0.107	1.17e-11	92.38	3.74	1.00e-06
pard300-j	43.80	377.76	0.124	2.45e-12	43.77	4.29	1.00e-06

Table 7: Results for $n = 300$ and $\varkappa = 20$

Example	f_{Gurobi}	$f_{relaxed}$	$T_{relaxed}$	$v_{relaxed}$	$f_{regularized}$	$T_{regularized}$	$v_{regularized}$
orl400-005-a	202.68	550.04	1.570	1.31e-12	203.19	6.29	1.00e-06
orl400-005-b	247.85	632.03	0.258	6.11e-14	263.29	7.14	1.00e-06
orl400-005-c	114.93	365.74	0.233	1.14e-12	115.19	7.27	1.00e-06
orl400-005-d	96.06	274.67	0.224	4.66e-12	96.21	6.82	1.00e-06
orl400-005-e	133.89	383.44	0.218	2.72e-12	134.22	6.86	1.00e-06
orl400-005-f	190.13	568.38	0.216	2.50e-12	190.03	7.34	1.00e-06
orl400-005-g	115.35	370.89	0.196	7.72e-12	119.14	7.60	1.00e-06
orl400-005-h	41.48	289.90	0.153	0.00e+00	41.45	7.45	1.00e-06
orl400-005-i	188.04	581.59	0.163	0.00e+00	187.92	6.65	1.00e-06
orl400-005-j	245.55	501.98	0.240	1.16e-16	325.72	6.88	1.00e-06
orl400-05-a	134.53	375.86	0.229	1.26e-11	134.45	6.45	9.94e-07
orl400-05-b	105.79	359.75	0.193	7.83e-12	105.72	6.38	1.00e-06
orl400-05-c	122.82	326.06	0.235	1.36e-11	122.75	6.71	1.00e-06
orl400-05-d	176.90	379.40	0.224	1.03e-14	195.86	7.00	1.00e-06
orl400-05-e	171.07	319.72	0.241	0.00e+00	180.46	7.23	1.00e-06
orl400-05-f	76.85	251.92	0.193	5.34e-12	76.79	6.58	1.00e-06
orl400-05-g	174.02	361.88	0.255	6.54e-14	177.44	7.51	1.00e-06
orl400-05-h	82.36	216.75	0.199	4.78e-12	83.03	6.83	1.00e-06
orl400-05-i	34.01	279.54	0.146	0.00e+00	33.99	6.84	1.00e-06
orl400-05-j	38.66	213.23	0.151	0.00e+00	39.32	7.98	1.00e-06
pard400-a	318.76	975.56	0.196	4.92e-12	318.69	7.83	1.00e-06
pard400-b	861.62	1852.84	0.184	5.19e-12	911.22	3.62	1.00e-06
pard400-c	716.54	1191.28	0.261	3.93e-14	802.06	6.02	1.00e-06
pard400-d	373.44	1100.84	0.208	1.28e-12	373.32	7.90	1.00e-06
pard400-e	290.89	1081.20	0.200	3.84e-12	290.65	8.56	1.00e-06
pard400-f	802.75	1969.15	0.217	2.33e-14	844.02	3.94	1.00e-06
pard400-g	203.55	602.67	0.196	2.73e-12	203.35	8.45	1.00e-06
pard400-h	438.28	1650.95	0.206	6.42e-13	437.98	8.67	1.00e-06
pard400-i	61.96	529.12	0.146	0.00e+00	62.00	7.83	1.00e-06
pard400-j	98.68	775.68	0.147	0.00e+00	98.80	8.81	1.00e-06

Table 8: Results for $n = 400$ and $\varkappa = 5$

Example	f_{Gurobi}	$f_{relaxed}$	$T_{relaxed}$	$v_{relaxed}$	$f_{regularized}$	$T_{regularized}$	$v_{regularized}$
orl400-005-a	106.65	550.04	0.332	1.31e-12	107.16	6.18	1.00e-06
orl400-005-b	136.42	632.03	0.286	6.11e-14	139.80	7.82	1.00e-06
orl400-005-c	60.94	365.74	0.212	1.14e-12	60.90	6.95	1.00e-06
orl400-005-d	51.18	274.67	0.220	4.66e-12	51.17	7.19	1.00e-06
orl400-005-e	71.21	383.44	0.192	2.72e-12	71.22	7.14	1.00e-06
orl400-005-f	100.15	568.38	0.187	2.50e-12	101.34	7.80	1.00e-06
orl400-005-g	61.90	370.89	0.198	7.72e-12	63.20	7.50	1.00e-06
orl400-005-h	21.82	289.90	0.180	0.00e+00	21.96	7.49	1.00e-06
orl400-005-i	98.90	581.59	0.153	0.00e+00	98.84	6.99	1.00e-06
orl400-005-j	131.88	501.98	0.242	1.16e-16	170.42	6.81	1.00e-06
orl400-05-a	72.62	375.86	0.225	1.26e-11	72.84	6.63	1.00e-06
orl400-05-b	56.86	359.75	0.200	7.83e-12	56.97	6.88	1.00e-06
orl400-05-c	65.85	326.06	0.189	1.36e-11	65.97	7.73	1.00e-06
orl400-05-d	96.23	379.40	0.235	1.03e-14	96.36	7.51	1.00e-06
orl400-05-e	92.80	319.72	0.267	0.00e+00	94.41	7.52	1.00e-06
orl400-05-f	42.95	251.92	0.199	5.34e-12	42.99	6.49	1.00e-06
orl400-05-g	92.57	361.88	0.313	6.54e-14	93.56	7.45	1.00e-06
orl400-05-h	44.10	216.75	0.202	4.78e-12	44.26	7.26	1.00e-06
orl400-05-i	18.36	279.54	0.151	0.00e+00	18.40	6.99	1.00e-06
orl400-05-j	20.62	213.23	0.173	0.00e+00	20.67	8.12	1.00e-06
pard400-a	165.17	975.56	0.202	4.92e-12	165.05	8.05	1.00e-06
pard400-b	451.99	1852.84	0.190	5.19e-12	530.89	4.36	1.00e-06
pard400-c	376.21	1191.28	0.276	3.93e-14	464.19	6.30	1.00e-06
pard400-d	195.47	1100.84	0.211	1.28e-12	195.33	7.98	1.00e-06
pard400-e	150.89	1081.20	0.187	3.84e-12	150.77	7.85	1.00e-06
pard400-f	431.08	1969.15	0.250	2.33e-14	460.59	6.03	1.00e-06
pard400-g	108.92	602.67	0.224	2.73e-12	108.82	9.07	1.00e-06
pard400-h	233.89	1650.95	0.202	6.42e-13	233.74	8.43	1.00e-06
pard400-i	33.11	529.12	0.144	0.00e+00	33.06	8.80	1.00e-06
pard400-j	51.48	775.68	0.144	0.00e+00	51.42	8.54	1.00e-06

Table 9: Results for $n = 400$ and $\varkappa = 10$

Example	f_{Gurobi}	$f_{relaxed}$	$T_{relaxed}$	$v_{relaxed}$	$f_{regularized}$	$T_{regularized}$	$v_{regularized}$
orl400-005-a	58.11	550.04	0.184	1.31e-12	58.08	7.57	1.00e-06
orl400-005-b	75.71	632.03	0.252	6.11e-14	77.09	7.70	1.00e-06
orl400-005-c	32.91	365.74	0.213	1.14e-12	32.89	7.17	1.00e-06
orl400-005-d	28.34	274.67	0.196	4.66e-12	28.32	8.02	1.00e-06
orl400-005-e	39.50	383.44	0.173	2.72e-12	39.53	7.06	1.00e-06
orl400-005-f	54.33	568.38	0.191	2.50e-12	55.53	8.12	1.00e-06
orl400-005-g	34.36	370.89	0.185	7.72e-12	34.92	7.22	1.00e-06
orl400-005-h	11.86	289.90	0.146	0.00e+00	11.91	7.69	1.00e-06
orl400-005-i	54.37	581.59	0.151	0.00e+00	54.40	7.11	1.00e-06
orl400-005-j	72.91	501.98	0.231	1.16e-16	83.85	7.05	1.00e-06
orl400-05-a	40.55	375.86	0.202	1.26e-11	40.53	7.21	1.00e-06
orl400-05-b	31.66	359.75	0.189	7.83e-12	31.83	7.32	1.00e-06
orl400-05-c	36.04	326.06	0.205	1.36e-11	36.53	8.27	1.00e-06
orl400-05-d	53.49	379.40	0.241	1.03e-14	53.93	7.69	1.00e-06
orl400-05-r	52.28	319.72	0.254	0.00e+00	52.75	8.21	1.00e-06
orl400-05-f	24.83	251.92	0.197	5.34e-12	24.86	8.28	1.00e-06
orl400-05-g	51.44	361.88	0.258	6.54e-14	51.66	7.57	1.00e-06
orl400-05-h	24.63	216.75	0.186	4.78e-12	24.62	7.49	1.00e-06
orl400-05-i	10.38	279.54	0.146	0.00e+00	10.41	6.87	1.00e-06
orl400-05-j	11.54	213.23	0.157	0.00e+00	11.54	8.48	1.00e-06
pard400-a	88.63	975.56	0.198	4.92e-12	88.60	9.02	1.00e-06
pard400-b	254.62	1852.84	0.192	5.19e-12	272.76	13.87	1.00e-06
pard400-c	203.08	1191.28	0.225	3.93e-14	234.15	7.12	1.00e-06
pard400-d	106.56	1100.84	0.201	1.28e-12	106.50	9.05	1.00e-06
pard400-e	82.50	1081.20	0.201	3.84e-12	82.46	7.99	1.00e-06
pard400-f	233.70	1969.15	0.237	2.33e-14	275.20	7.46	1.00e-06
pard400-g	60.34	602.67	0.204	2.73e-12	60.28	9.40	1.00e-06
pard400-h	130.03	1650.95	0.225	6.42e-13	129.96	8.64	1.00e-06
pard400-i	18.05	529.12	0.154	0.00e+00	18.05	9.36	1.00e-06
pard400-j	27.38	775.68	0.148	0.00e+00	27.34	8.83	1.00e-06

Table 10: Results for $n = 400$ and $\varkappa = 20$