

Mechanistic Features of Isomerizing Alkoxy carbonylation of Methyl Oleate

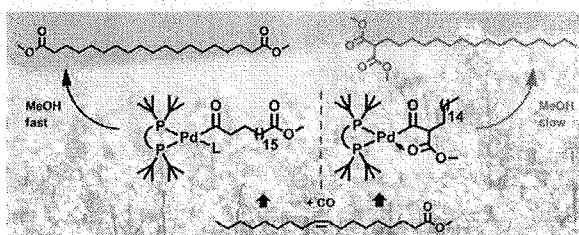
Philipp Roesle,[†] Christoph J. Dürr,[†] Heiko M. Möller,^{*,†} Luigi Cavallo,[‡] Lucia Caporaso,^{*,‡} and Stefan Mecking^{*,†}

[†]Chair of Chemical Materials Science, Department of Chemistry, University of Konstanz, 78464 Konstanz, Germany

[‡]Chemical and Life Sciences and Engineering, Kaust Catalysis Center, King Abdullah University of Science and Technology, Thuwal 23955-6900, Saudi Arabia

[‡]Department of Chemistry, University of Salerno, Via Ponte Don Melillo, 84084-Fisciano (SA), Italy

ABSTRACT: The weakly coordinated triflate complex $[(P^*P)Pd(OTf)]^+(OTf)^-$ (**1**) ($P^*P = 1,3$ -bis(di-*tert*-butylphosphino)propane) is a suitable reactive precursor for mechanistic studies of the isomerizing alkoxy carbonylation of methyl oleate. Addition of CH_3OH or CD_3OD to **1** forms the hydride species $[(P^*P)PdH(CH_3OH)]^+(OTf)^-$ (**2-CH₃OH**) or the deuteride $[(P^*P)PdD(CD_3OD)]^+(OTf)^-$ (**2^D-CD₃OD**), respectively. Further reaction with pyridine cleanly affords the stable and isolable hydride $[(P^*P)PdH-(pyridine)]^+(OTf)^-$ (**2-pyr**). This complex yields the hydride fragment free of methanol by abstraction of pyridine with $BF_3 \cdot OEt_2$, and thus provides an entry to mechanistic observations including intermediates reactive toward methanol. Exposure of methyl oleate (100 equiv) to **2^D-CD₃OD** resulted in rapid isomerization to the thermodynamic isomer distribution, 94.3% of internal olefins, 5.5% of α,β -unsaturated ester and <0.2% of terminal olefin. Reaction of **2-pyr**/ $BF_3 \cdot OEt_2$ with a stoichiometric amount of 1-¹³C-labeled 1-octene at $-80^\circ C$ yields a 50:50 mixture of the linear alkyls $[(P^*P)Pd^{13}CH_2(CH_2)_6CH_3]^+$ and $[(P^*P)PdCH_2(CH_2)_6^{13}CH_3]^+$ (**4a** and **4b**). Further reaction with ¹³CO yields the linear acyls $[(P^*P)Pd^{13}C(=O)^{12/13}CH_2(CH_2)_6^{12/13}CH_3(L)]^+$ (**5-L**; $L = \text{solvent or } ^{13}CO$). Reaction of **2-pyr**/ $BF_3 \cdot OEt_2$ with a stoichiometric amount of methyl oleate at $-80^\circ C$ also resulted in fast isomerization to form a linear alkyl species $[(P^*P)PdCH_2(CH_2)_{16}C(=O)OCH_3]^+$ (**6**) and a branched alkyl stabilized by coordination of the ester carbonyl group as a four membered chelate $[(P^*P)PdCH\{(CH_2)_{15}CH_3\}C(=O)OCH_3]^+$ (**7**). Addition of carbon monoxide (2.5 equiv) at $-80^\circ C$ resulted in insertion to form the linear acyl carbonyl $[(P^*P)PdC(=O)(CH_2)_{17}C(=O)OCH_3(CO)]^+$ (**8-CO**) and the five-membered chelate $[(P^*P)PdC(=O)CH\{(CH_2)_{15}CH_3\}C(=O)OCH_3]^+$ (**9**). Exposure of **8-CO** and **9** to ¹³CO at $-50^\circ C$ results in gradual incorporation of the ¹³C label. Reversibility of **7** + CO \rightleftharpoons **9** is also evidenced by $\Delta G = -2.9 \text{ kcal mol}^{-1}$ and $\Delta G^\ddagger = 12.5 \text{ kcal mol}^{-1}$ from DFT studies. Addition of methanol at $-80^\circ C$ results in methanolysis of **8-L** ($L = \text{solvent}$) to form the linear diester, 1,19-dimethylnonadecandioate, whereas **9** does not react and no branched diester is observed. DFT yields a barrier for methanolysis of $\Delta G^\ddagger = 29.7 \text{ kcal mol}^{-1}$ for the linear (**8**) vs $\Delta G^\ddagger = 37.7 \text{ kcal mol}^{-1}$ for the branched species (**9**).



INTRODUCTION

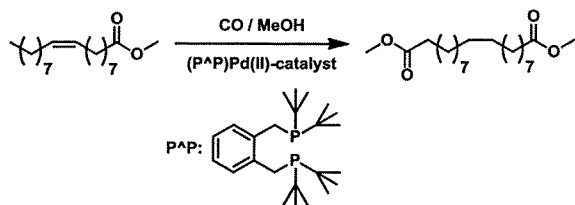
The utilization of renewable resources as a source of chemicals requires their efficient conversion to useful building blocks. Fatty acids are attractive feedstocks due to their unique, long methylene sequences.¹ Their incorporation into linear, long-chain α,ω -functionalized compounds is of interest, for example, for the generation of semicrystalline aliphatic polyesters and hydrophobic polyamides. The terminal functionalization of fatty acids is a synthetic challenge, however. Biotechnological^{2,3} as well as entirely chemical catalytic approaches are studied to this end. Among the latter, isomerizing hydroformylation by rhodium complexes is noteworthy in the context of the approach presented here.⁴

Alkoxy carbonylation is a well-known reaction that generates an ester function from an olefin, carbon monoxide, and an

alcohol.^{5,6} Thus, methoxycarbonylation of ethylene to methyl propionate has recently been commercialized as part of a novel process for methyl methacrylate production.⁷ This reaction, which is also well understood mechanistically,^{6b,c,8} is catalyzed with high rates by palladium(II) complexes of 1,2- $(CH_2P^tBu_2)_2C_6H_4$.^{6a} In order to fully incorporate the fatty acid chain in a linear fashion, a prior selective isomerization step is required, however. This is particularly difficult, as terminal olefins are thermodynamically strongly disfavored vs the internal double bonds of the substrate. Remarkably, palladium(II) catalysts modified with electron-rich, very bulky substituted diphosphine ligands (identical or similar to the ones

reported for the aforementioned ethylene carbonylation)⁹ nonetheless convert the double bond deep in the chain of an unsaturated fatty acid selectively to a terminal ester group (Scheme 1).^{10,11} Step-growth polymerization of the products,

Scheme 1. Isomerizing Alkoxy carbonylation of Methyl Oleate



e.g. 1,19-dimethylnonadecanoate from methyl oleate, to novel, long-chain aliphatic polycondensates, and also their utility as precursors to novel α,ω -difunctional compounds like diols and diamines have been demonstrated.¹²

The origin of this unusual selectivity is unclear to date. We now present a full mechanistic analysis, based on observation and identification of intermediates by variable-temperature nuclear magnetic resonance (NMR) spectroscopy, complemented by theoretical studies of selected steps.

RESULTS AND DISCUSSION

For this study, the weakly coordinated Pd(II) triflate complex of the bulky-substituted electron-rich chelating diphosphine 1,3-bis(di-*tert*-butylphosphino)propane [(P^AP)Pd(OTf)]⁺(OTf)⁻ (**1**; P^AP = ^tBu₂P(CH₂)₃P^tBu₂) proved to be a suitable precursor. From **1**, a clean hydride complex could be isolated that provides an entry into mechanistic studies (*vide infra*), which was not possible in our hands from the corresponding triflate complex of 1,2-(CH₂P^tBu₂)₂C₆H₄ to date. **1** was accessed by reaction of the diphosphine with [Pd(dba)₂] and subsequent oxidation of the palladium metal with benzoquinone in the presence of trifluoromethanesulfonic acid (for synthetic procedures cf. the Supporting Information).^{6b,8b} In an alkoxy carbonylation experiment at elevated temperature and CO pressure using **1** as a catalyst precursor, methyl oleate was converted to 1,19-dimethylnonadecanoate with high conversion and selectivity (cf. Supporting Information [SI]). This catalyst performance is similar to methoxy carbonylation of methyl oleate with the aforementioned diphosphine 1,2-(CH₂P^tBu₂)₂C₆H₄,¹² in detail the reaction rate and selectivity are slightly lower with **1** by comparison to [(1,2-(CH₂P^tBu₂)₂C₆H₄)Pd(OTf)]⁺(OTf)⁻. Computational studies were carried out on 1,2-(CH₂P^tBu₂)₂C₆H₄-coordinated species, as the rigid phosphine backbone reduces the number of conformers and facilitates the identification of ground and transition states.

Pd(II)-Hydride Species. To provide an entry into the studies of the various reaction steps and intermediates, palladium hydrides [(P^AP)PdH(L)]⁺ (P^AP = ^tBu₂P(CH₂)₃P^tBu₂) were found to be suitable reactive species. Dissolution of the triflate complex [(P^AP)Pd(OTf)]⁺(OTf)⁻ (**1**) in CD₂Cl₂ containing CH₃OH or CD₃OD, respectively, at room temperature resulted in clean conversion to the solvent coordinated hydride [(P^AP)PdH(CH₃OH)]⁺(OTf)⁻ (2-CH₃OH) or corresponding deuteride 2^D-CD₃OD (Figure S15, SI). Key resonances (-80 °C) of 2-CH₃OH are observed

at $\delta^1\text{H}$ -9.52 (doublet of doublet with ²J_{PH_{trans}} = 195.7 Hz and ²J_{PH_{cis}} = 18.9 Hz) for Pd-H and $\delta^{31}\text{P}$ 73.19 and 20.79 (doublet each, ²J_{PP} = 23.2 Hz) for the inequivalent phosphorus atoms (for full characterization of all compounds cf. the SI).

Addition of carbon monoxide to 2-CH₃OH or 2^D-CD₃OD at -78 °C resulted in displacement of coordinated methanol by the strongly coordinating CO ligand to form [(P^AP)PdH/D(CO)]⁺(OTf)⁻ (2-CO/2^D-CO), or 2-¹³CO if ¹³CO was used. Key resonances (-80 °C) of 2-CO are observed at $\delta^1\text{H}$ -5.51 (doublet of doublet with ²J_{PH_{trans}} = 169.5 Hz and ²J_{PH_{cis}} = 20.8 Hz) for Pd-H and $\delta^{31}\text{P}$ 59.60 and 31.12 (doublet each, ²J_{PP} = 27.6 Hz) for the inequivalent phosphorus atoms. In 2-¹³CO additional ²J_{PC} couplings (²J_{PC_{trans}} = 100.5 Hz and ²J_{PC_{cis}} = 12.1 Hz) are observed. The resonance of coordinated ¹³CO is observed at $\delta^{13}\text{C}$ 183.47 (doublet of doublet), which is very similar to free ¹³CO ($\delta^{13}\text{C}$ 184.13). Nonetheless, coordination of CO is evidenced by the observed ²J_{PC} couplings in ¹³C NMR spectra. Note that upon heating of 2-¹³CO to room temperature quantitative formation of [(P^AP)Pd(μ -H)-(μ -¹³CO)Pd(P^AP)]⁺(OTf)⁻ (**3**; $\delta^1\text{H}$ -7.79 (quintet) ²J_{PH} = 42.8 Hz for μ -H, $\delta^{31}\text{P}$ 38.64 (doublet) ²J_{PC} = 30.6 Hz and $\delta^{13}\text{C}$ 230.00 for μ -¹³CO (quintet) ²J_{PC} = 30.6 Hz) was observed within minutes. A characteristic of this palladium(I) complex is a rapid fluxional process, that results in rapid site exchange of all ³¹P nuclei leading to a single resonance in ³¹P NMR spectroscopy, even at temperatures as low as -80 °C. This characteristic has been observed previously for binuclear palladium(I) species with μ -H and μ -CO bridging ligands with different diphosphines.^{8d,13} Also, a mechanism for the reductive formation of a species similar to **3** was suggested.¹⁴

For the anticipated observation of CO insertion reactions into palladium alkyl species the absence of alcohol is crucial, as immediate methanolysis occurs otherwise (*vide infra*). Addition of pyridine to 2-CH₃OH resulted in displacement of methanol from the solvent coordinated hydride, to yield [(P^AP)PdH-(pyridine)]⁺(OTf)⁻ (2-pyr) with $\delta^1\text{H}$ -9.07 (doublet of doublet with ²J_{PH_{trans}} = 190.6 Hz and ²J_{PH_{cis}} = 17.7 Hz) for Pd-H and $\delta^{31}\text{P}$ 65.32 and 19.68 (doublet each, ²J_{PP} = 26.0 Hz) for the inequivalent phosphorus atoms (-80 °C; Figure 1). This pyridine adduct was isolated by removing the solvent in vacuum as a stable off-white solid (SI).

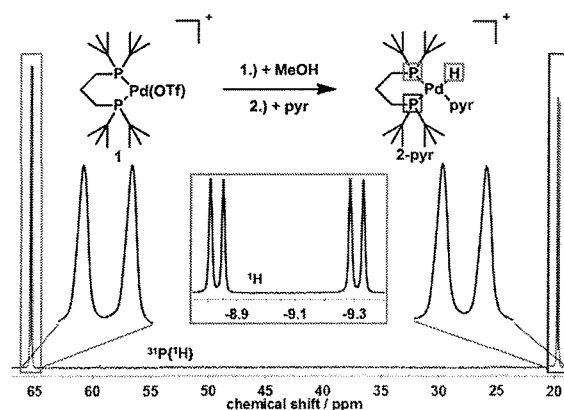


Figure 1. ³¹P{¹H} NMR spectrum (-80 °C) of [(P^AP)PdH-(pyridine)]⁺(OTf)⁻ (2-pyr) in CD₂Cl₂. Insert: Pd-H resonance.

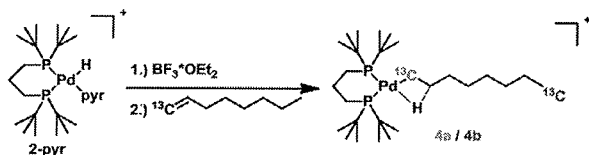
Isomerization with Pd(II)-Hydrides. Exposure of excess methyl oleate (100 equiv) to a catalytic amount of 2^D -CD₃OD in a CD₃OD/CD₂Cl₂ mixture (2/3 by volume) in an NMR tube at room temperature resulted in immediate isomerization of the double bond to an equilibrium of all isomers (94.3% of internal olefins, 5.5% of α,β -unsaturated ester, and <0.2% of terminal olefin (Figures S13 and S14 and Table S3, SI). This observed distribution is confirmed to correspond to the thermodynamic distribution by isomerization experiments on other olefins, for which thermodynamic data is available (Tables S1 and S2, SI).¹⁵ Isomerization of methyl 5-hexenoate and 1-octene, respectively, by 2^D -CD₃OD in CD₃OD yielded the thermodynamic distribution within experimental error, and correcting for chain lengths the portion of 1-olefin and α,β -unsaturated ester agree with the isomer composition obtained from methyl oleate.

Isomerization was also observed in the presence of carbon monoxide. Ten equivalents of carbon monoxide were added at room temperature to a solution of 2-pyr in C₂D₂Cl₄, which resulted in displacement of pyridine by CO and formation of complex 3. Upon addition of 10 equiv of methyl oleate to this solution isomerization was observed via ¹H NMR spectroscopy. At 50 °C resonances of the α,β -unsaturated ester as well as of the internal olefins appeared. Heating the sample to 70 °C led to faster isomerization but also fast decomposition (within 30 min) of 3 forming palladium black and free protonated ligand (evidenced by its signals in ¹H and ³¹P NMR spectroscopy). While this experiment does not distinguish between the effect of reversible coordination of CO and of formation of 3, which occurs here, on the rate of isomerization, it is evident that the presence of CO as a relatively strongly binding donor does not prevent isomerization.

Insertion of 1-Octene and CO into Pd(II)-Hydrides.

The capability of the hydride species 2 for very rapid isomerization was illuminated further by stoichiometric experiments at low temperature. Abstraction of pyridine from 2-pyr with a stoichiometric amount of BF₃·OEt₂ at 0 °C in CD₂Cl₂ yielded a reactive species,¹⁶ which upon addition of 1-¹³C-labeled 1-octene (0.95 equiv) at -80 °C immediately inserted the olefin cleanly and completely to form complex 4 (Scheme 2

Scheme 2. Stoichiometric Insertion of 1-¹³C-Labeled 1-Octene into Palladium Hydride Species



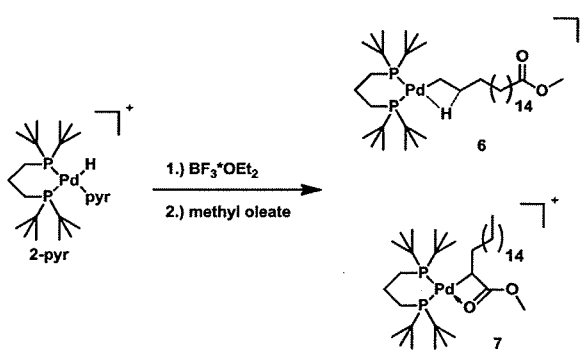
and Figures S16 and S17, SI). Remarkably, only this linear primary alkyl is observed. Moreover, the ¹³C label is not only found in the α -position [(P^{^A}P)Pd¹³CH₂(CH₂)₆CH₃]⁺ (4a), but in an equal amount (50:50) also in the terminal position, [(P^{^A}P)Pd(CH₂)₇¹³CH₃]⁺ (4b). Key resonances of 4a and 4b are δ ¹³C 35.08 (PdCH₂) with ²J_{PCtrans} = 39.0 Hz (²J_{PCcis} is not resolved) and 14.11 (CH₂CH₃), and δ ³¹P 61.73 (doublet with ²J_{PP} = 35.7 Hz) and 38.60 (doublet with ²J_{PP} = 35.7 Hz, and a further doublet splitting in 4a by ²J_{PCtrans} = 39.0 Hz).¹⁷ Furthermore, insertion of 2-octene into 2-pyr/BF₃·OEt₂ leads to identical resonances in the ³¹P NMR spectrum. This shows that even at this low temperature the metal center is running

along the alkyl chain by a series of rapid insertion and β -hydride elimination events. The chemical shifts of the phosphorus atoms observed here are not altered significantly by the presence of methanol.¹⁸ This suggests that the fourth coordination site is likely occupied by a β -agostic interaction rather than coordination of methanol solvent.

Addition of 1.5 equiv of ¹³CO to complex 4 at -78 °C resulted in insertion of ¹³CO to form the linear acyl complex [(P^{^A}P)Pd¹³C(=O)^{12/13}CH₂(CH₂)₆^{12/13}CH₃(L)]⁺ (5-L, L = solvent, δ ³¹P 76.42 and 34.78) and the acyl carbonyl complex 5-¹³CO (with δ ³¹P 31.49 and 28.12). In these products of CO insertion the ¹³C-label from the olefin is also evenly distributed in the α - and the terminal position of the acyl fragment, as evidenced clearly by the coupling patterns in the ¹³C and ³¹P NMR spectra (Figures S18 and S19, SI).¹⁹ Note that due to the use of substoichiometric amounts of olefin in generation of complex 4 (vide supra), addition of ¹³CO to 4a and 4b, also generated the hydrido carbonyl complex 2-¹³CO (Figure S20, SI). These experiments show that insertion of CO is only observed into the linear alkyl species. This is notable because, though only the primary alkyls are observed as products of insertion of internal olefin into Pd-H (vide supra), secondary alkyls must occur in small concentrations as intermediates of isomerization.

Insertion of methyl oleate and CO into Pd(II)-Hydrides. Reaction of 2-pyr/BF₃·OEt₂ at -80 °C with 0.95 equiv of methyl oleate ¹³C-labeled at the carbonyl group afforded two novel species, 6 and 7 (Scheme 3 and Figure S22 SI), in a ratio of 1 to 4 (calculated from integration of ³¹P NMR spectra).

Scheme 3. Stoichiometric Insertion of Methyl Oleate into Palladium Hydride Species



On the basis of its ³¹P resonances (δ ³¹P 61.80 and 38.70; doublet each with ²J_{PP} = 35.8 Hz) being virtually identical to the aforementioned linear insertion product of 1-octene (4, Table 1), a carbonyl resonance (δ ¹³C 174.93) identical to free methyl oleate and otherwise conclusive spectral data, 6 was identified as the linear alkyl [(P^{^A}P)PdCH₂(CH₂)₁₆¹³COOCH₃]⁺ (Figure S23, SI). 7 (δ ¹³C(¹³C=O) 168.10 and δ ³¹P 65.73 (doublet of doublet with ²J_{PP} = 41.0 Hz and ³J_{PC} = 3.5 Hz) and 37.76 (doublet with ²J_{PP} = 41.0 Hz) was identified as the branched alkyl [(P^{^A}P)PdCH-((CH₂)₁₅CH₃)¹³COOCH₃]⁺ with the metal-bound carbon directly adjacent to the ester function (Figure S24, SI). Evidence for this structure arises from the observed coupling of one ³¹P resonance to the ¹³C label, and particularly from ¹H,¹³C HSQC and ¹H,¹³C HMBC correlation experiments in

Table 1. $^{31}\text{P}\{^1\text{H}\}$ NMR chemical shifts and coupling constants of relevant intermediates.^a

| compound | δP_a | δP_b | $^2J_{PP}$ / Hz |
|-----------------------------------|--------------|--------------|-----------------|
| 1 ^b | | 79.39 | — |
| 2-CH ₃ OH ^c | 73.19 | 20.79 | 23.2 |
| 2-CO | 59.60 | 31.13 | 27.6 |
| 2-pyr | 65.32 | 19.68 | 26.0 |
| 4 | 61.73 | 38.60 | 39.0 |
| 6 | 61.80 | 38.70 | 35.8 |
| 5 | 76.42 | 34.78 | 43.7 |
| 8 | 76.52 | 34.86 | 44.5 |
| 5- ¹³ CO | 31.49 | 28.12 | 60.0 |
| 8- ¹³ CO | 31.50 | 28.20 | 60.5 |
| 7 | 65.73 | 37.76 | 41.0 |
| 9 | 58.31 | 24.06 | 49.6 |

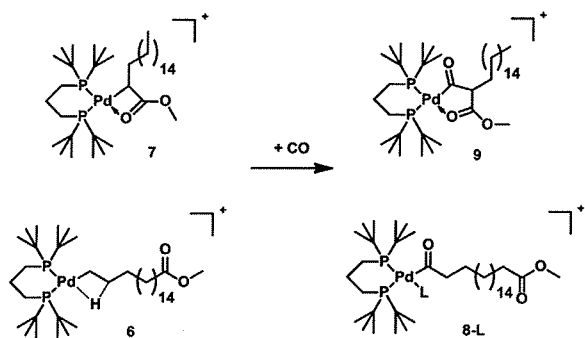
^aCD₂Cl₂, -80 °C, unless noted otherwise; ^bCD₂Cl₂, 25 °C; ^cCD₂Cl₂/CH₃OH (v/v = 3/2), -80 °C.

which the methine group next to the palladium center was clearly identified to be in the α position of the carbonyl group (Figures S25–S27, SI). That this four-membered chelate prevails in stability over the five- and six-membered isomers is likely a result of the very bulky *tert*-butyl substituted diphosphine ligand, which restricts the available space at the metal center.

This finding is also supported by theoretical studies, which find a four-membered chelate to be lower in energy than the five-membered analogue (by 2.6 kcal mol⁻¹, cf. SI, Figure S43). By comparison, for analogous complexes in which the bulky *tert*-butyl substituents of the diphosphine are replaced by methyl groups the five-membered chelate was found to be energetically favorable indeed (by 3.3 kcal mol⁻¹).

Upon addition of ¹³CO (1.5 equiv) species 6 and 7 react to form the novel compounds 8-L (L = solvent), 8-¹³CO and 9 (Scheme 4).

Scheme 4. Stoichiometric Insertion of Carbon Monoxide into Methyl Oleate Insertion Products



8-L was identified as the linear acyl species [(P^{^A}P)Pd¹³C(=O)(CH₂)₁₇¹³COOCH₃(L)]⁺ with $\delta^{31}\text{P}$ 76.52 and 34.86 (Figure S28, SI).²⁰ 8-¹³CO is the linear acyl carbonyl species [(P^{^A}P)Pd¹³C(=O)(CH₂)₁₇¹³COOCH₃(¹³CO)]⁺ with $\delta^{31}\text{P}$ 31.50 and 28.20 and an additional resonance for coordinated ¹³CO in the carbon NMR spectrum (Figure S29, SI).²¹ The ³¹P resonances of 8-L and 8-¹³CO are in good agreement to those of 5-L and 5-¹³CO, respectively (Table 1). 9 was identified as the five-membered chelate [(P^{^A}P)Pd¹³C(=O)CH-(CH₂)₁₅CH₃]¹³COOCH₃] with $\delta^{31}\text{P}$ 58.31 and 24.06

(Figure S30, SI).²² The ratio of linear (8-L and 8-¹³CO) versus branched (9) carbonyl species is ~1:1 (determined by integration of the ³¹P NMR spectra). Notably, even in the presence of an excess of the strongly coordinating ligand ¹³CO (>6 equiv) the chelate 9 is not opened, and formation of 9-¹³CO is not observed.

Reversibility of CO Insertion. In the overall mechanistic picture, the reversibility of carbon monoxide insertion in the branched product pathway turns out to be a crucial issue (vide infra). To this end, ¹³C-labeled carbon monoxide was added to a sample of 8-CO and 9 at -50 °C. This sample had been prepared as described above but without using ¹³C-labeled compounds and employing 2.5 equiv of CO to ensure that complexes 6 and 7 are converted completely to 8-CO and 9 (Figure S36–S38, SI). After addition of 10 equiv of ¹³CO at -78 °C the sample was warmed to -50 °C and the exchange reaction was monitored via ³¹P NMR spectroscopy. Exchange is evidenced by gradual appearance of additional ²J_{PC} couplings (Figures 2 and S39 and S40, SI), which was completed within 5 h.

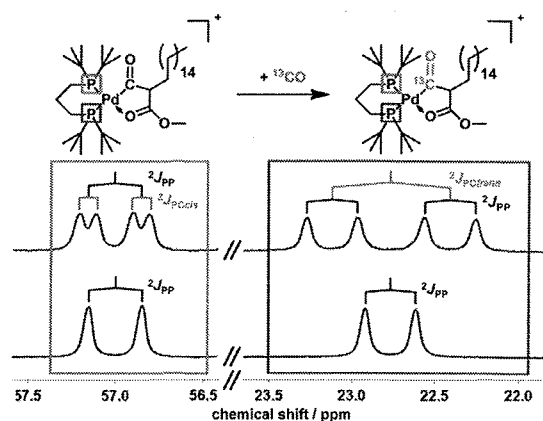


Figure 2. Detail of $^{31}\text{P}\{^1\text{H}\}$ NMR spectra (measured at -80 °C) of CO exchange in complex 9 (bottom: spectrum before addition of ¹³CO; top: after addition of 10 equiv of ¹³CO and 5 h at -50 °C).

The reversible nature of this CO insertion is further corroborated by DFT studies (Figures S44 and S45, SI). The reaction 7 + CO \rightleftharpoons 9 is nearly thermoneutral ($\Delta G = -2.9$ kcal mol⁻¹), and the insertion barrier of $\Delta G^\ddagger = 12.5$ kcal mol⁻¹ is relatively low (Figure 3). Note that this differs from the nature of the CO insertion into the linear alkyl (6 + CO \rightleftharpoons 8) which is associated with a slightly lower barrier ($\Delta G^\ddagger = 9.2$ kcal mol⁻¹) but higher energy gain of $\Delta G = -9.3$ kcal mol⁻¹ (Figure 4). Nevertheless, CO exchange was observed by NMR spectroscopy for both reactions.

Methanolysis. The final step of the catalytic cycle is alcoholysis of the acyl species. Addition of 0.5 equiv of methanol to a mixture of the acyl species 8-L, 8-¹³CO and 9 (prepared by addition of 1.5 equiv of ¹³CO to 6 and 7) at -80 °C resulted in disappearance of the ³¹P NMR signals of 8-L and immediate formation of the linear 1,19-dimethylnonadecanoate. No formation of the branched diester was observed, as evidenced by comparison with the ¹³C NMR shifts of a genuine sample of the malonic ester MeOOC-CHR-COOME (R = C₁₆H₃₃) prepared independently.²³ With excess CO, methanolysis appears to be slower. Addition of 20 equiv of methanol to 8-¹³CO and 9 (prepared by addition of 10 equiv of ¹³CO to

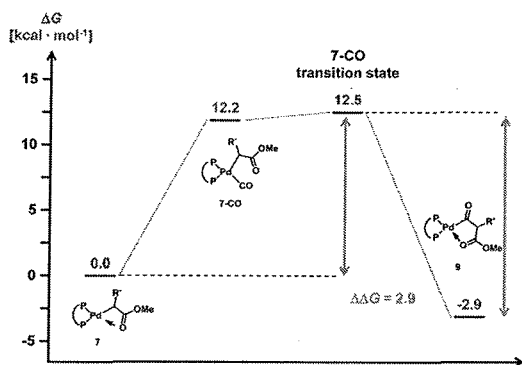


Figure 3. Energy profile of the CO insertion into the branched metal alkyl 7.

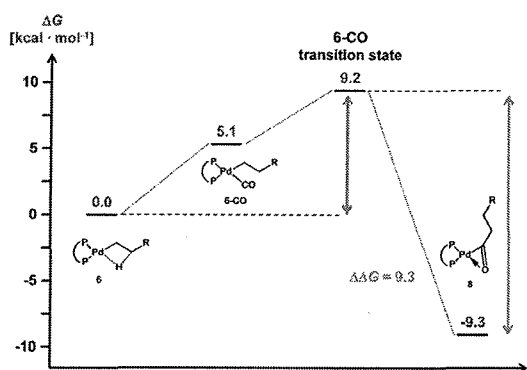


Figure 4. Energy profile of the CO insertion into the linear metal alkyl 6.

6 and 7) at $-80\text{ }^{\circ}\text{C}$ did not result in any observable methanolysis (evidenced by ^{31}P and ^{13}C NMR spectroscopy). Upon warming this sample to room temperature, formation of

the linear 1,19-dimethylnonadecandioate and the bridged hydride carbonyl complex 3 was observed. A trace amount ($<1\%$) of the branched ester was found, as evidenced by its ^{13}C NMR shifts (Figures S33–S35, SI). Also, under reaction conditions of preparative methyl oleate methoxycarbonylation (methyl oleate/ $\text{Pd} = 125/1$; 20 bar CO ; $90\text{ }^{\circ}\text{C}$; 90 h) the formation of a small amount ($<0.5\%$) of the branched diester was observed, as evidenced by gas chromatography (GC), by comparison to a genuine sample of the compound.

To further work out the reactivity differences responsible for the overall selectivity, the reaction was studied at $-60\text{ }^{\circ}\text{C}$ starting directly from a methanol solution ($\text{CD}_3\text{OD}/\text{CD}_2\text{Cl}_2 = 2/3$ by volume). Dissolving complex 1 in this solvent mixture yielded $2\text{-D-CD}_3\text{OD}$ (vide supra). Addition of 2 equiv of methyl oleate afforded a mixture of the alkyls 6 and 7.²⁴ Upon addition of 5 equiv of ^{13}CO to this solution, complex 9 formed (as evidenced by ^{13}C and ^{31}P NMR spectroscopy) along with some linear diester, 1,19-dimethylnonadecandioate (Figures S41 and S42, SI). Notably, 8-L or $8\text{-}^{13}\text{CO}$ are not observed under these conditions, due to rapid methanolysis to the linear diester. Finally, warming this sample to room temperature again results in the formation of further linear 1,19-dimethylnonadecandioate, trace amounts ($<1\%$) of the branched diester, and complex 3.²⁵

These observations indicate that methanolysis of the linear acyl complexes (8-L and 8-CO) is faster than methanolysis of the branched acyl species 9. This decisive difference in the methanolysis rate was further confirmed by DFT studies. For methanolysis of the linear acyl species (8), a barrier of $\Delta G^{\ddagger} = 29.7\text{ kcal mol}^{-1}$ was calculated by comparison to $\Delta G^{\ddagger} = 37.7\text{ kcal mol}^{-1}$ for methanolysis of the branched species (9) (cf. SI for details, Figures S46 and S47).

SUMMARY AND CONCLUSIONS

Our comprehensive direct experimental observations of intermediates and their reactivity at low temperatures reveal the following key mechanistic features (Figure 5). In the isomerization equilibrium along the alkyl chain, the terminal

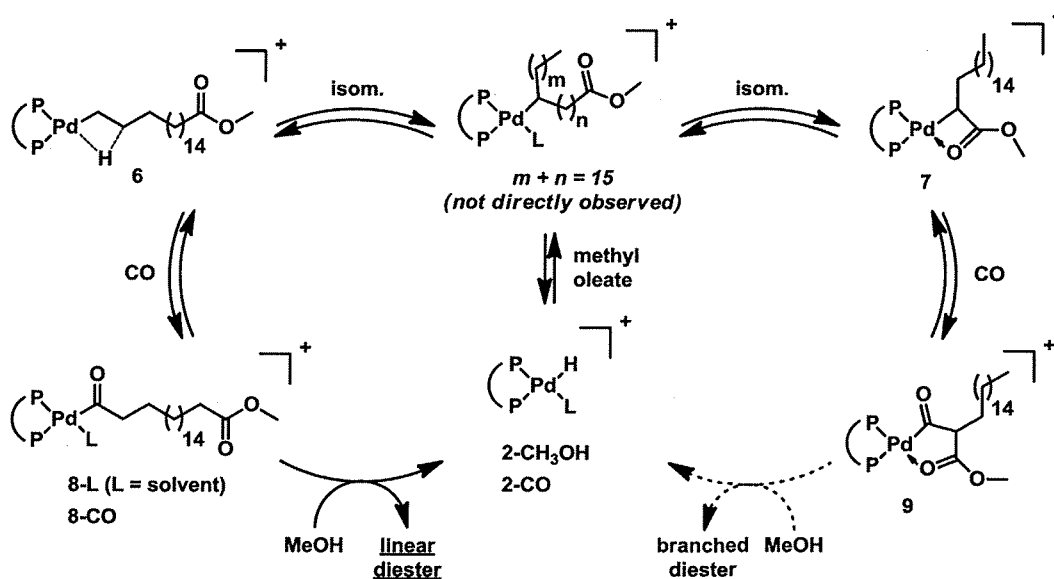


Figure 5. Decisive pathways of the isomerizing alkoxy carbonylation of methyl oleate ($\text{P}^{\wedge}\text{P} = \text{}^t\text{Bu}_2\text{P}(\text{CH}_2)_3\text{P}^i\text{Bu}_2$).

linear alkyl (6) by far predominates over the branched midchain alkyls. Only one branched alkyl occurs in amounts roughly similar to that of the linear alkyl species, due to its stabilization by chelating coordination of the adjacent ester group from the oleate substrate (7). Both the preference of this four-membered chelate over the corresponding five- or six-membered chelate isomers which are not observed, and the strong preference for linear alkyls over branched alkyls can be related to the extremely bulky diphosphine ligand, which restricts the available space around the other two coordination sites of the square-planar metal center.

Both the linear alkyl species and the chelate-stabilized branched alkyl species can insert CO. The linear CO insertion product (8) is subject to methanolysis to the linear α,ω -diester product, which represents the rate-determining step of product formation. By contrast, the resulting branched acyl insertion product (9) resists methanolysis, such that the corresponding branched malonic ester does not form to any significant extent. Nonetheless, the pathway leading to 9 (right cycle in Figure 5) is not a dead end, which would shut down catalysis rapidly. While 9 possibly represents a catalyst resting state, its formation is reversible, and this dormant species can interconvert with the productive catalytic cycle (left cycle in Figure 5). These two decisive features of the reactivity of 9 are supported by theoretical studies.

In summary, the extraordinary selectivity of isomerizing alkoxyacylation of unsaturated fatty acid esters can be traced to two decisive points, which are responsible for the kinetically controlled formation of the linear α,ω -product: a preference for linear insertion products, and the relatively slow methanolysis of the branched chelating acyl. An understanding of the influence of different substituents and backbones of the diphosphines on the various underlying steps and their interplay in this synthetically very useful reaction should be an issue of interest in future studies.

EXPERIMENTAL SECTION

All manipulations of phosphines or palladium complexes were carried out under an inert nitrogen or argon atmosphere using a standard glovebox or Schlenk techniques. ^{13}C and methyl oleate- ^{13}C were purchased from Aldrich. 1,3-Bis(di-*tert*-butylphosphino)propane²⁶ and ^{13}C -labeled 1-octene²⁷ were synthesized according to slightly modified literature procedures. Deuterated solvents were supplied by Eurisotop and stored over 3 Å molecular sieves. NMR spectra were recorded on a Varian Unity Inova 400 equipped with a 4NUC/switchable mode - 5 mm "direct detection" probe, a Bruker Avance III 400 equipped with a BBFO plus probe or a Bruker Avance III 600 equipped with a QXI-H/C/N/P quadruple resonance probe. NMR temperature calibration was performed using pure methanol. To establish the methine proton in the α -position of the carbonyl group a multiplicity-edited $^1\text{H},^{13}\text{C}$ HSQC was recorded in which the carbonyl region was decoupled using the WALTZ16 sequence (Figure S27, SI). The assignment of CH- and CP-coupling patterns was supported by one-dimensional ^{13}C spectra with additional decoupling of the ^{31}P resonances using GARP. Acquired data were processed and analyzed using MestReNova software. For detailed experimental procedures see the SI.

Synthesis of [(P[^]P)PdH(pyridine)]⁺(OTf)⁻ (2-pyr). Fifty milligrams of [(P[^]P)Pd(OTf)]⁺(OTf)⁻ (0.068 mmol, 1.0 equiv) were dissolved in 5 mL of methanol (MeOH) and stirred for 15 min at room temperature. One milliliter of pyridine (pyr) was added, and the resulting solution was stirred for another 15 min. Volatiles were then removed under reduced pressure, and the resulting off-white solid was washed several times with Et₂O. Yield: 54.9 mg [(P[^]P)PdH-(pyridine)]⁺(OTf)⁻ including 1 equiv of pyridinium triflate (0.061 mmol, 90%). ^1H NMR (400 MHz, 25 °C, CD₂Cl₂): δ 14.20 (s br,

1H), 8.79 (d, $^3J_{\text{HH}} = 5.6$ Hz, 2H), 8.64 (d, $^3J_{\text{HH}} = 4.7$ Hz, 2H), 8.57 (t, $^3J_{\text{HH}} = 7.9$ Hz, 1H), 8.04 (vt, $^3J_{\text{HH}} = 6.6$ Hz, 2H), 7.89 (t, $^3J_{\text{HH}} = 7.7$ Hz, 1H), 7.53 (vt, $^3J_{\text{HH}} = 6.4$ Hz, 2H), 2.10 (m, 2H), 1.75 (m, 2H), 1.66 (m, 2H), 1.22 (d, $^3J_{\text{PH}} = 14.8$ Hz, 18H), 1.12 (d, $^3J_{\text{PH}} = 12.9$ Hz, 18H), -9.07 (dd, $^2J_{\text{PH}_{\text{trans}}} = 190.6$, $^2J_{\text{PH}_{\text{cis}}} = 17.7$ Hz, 1H). $^{13}\text{C}\{^1\text{H}\}$ NMR (100 MHz, 25 °C, CD₂Cl₂): δ 152.09 (s), 146.78 (s br), 141.60 (s br), 138.85 (s), 127.55 (s br), 125.76 (s), 120.28 (q, $^1J_{\text{CF}} = 320.1$ Hz, O₃SCF₃), 35.84 (d, $^1J_{\text{CP}} = 28.9$ Hz), 35.32 (d, $^1J_{\text{CP}} = 11.1$ Hz), 29.52 (d, $^2J_{\text{CP}} = 5.3$ Hz), 29.21 (d, $^2J_{\text{CP}} = 2.9$ Hz), 22.61 (d, $^2J_{\text{CP}} = 5.0$ Hz), 19.00 (dd, $^1J_{\text{CP}} = 14.8$ Hz, $^3J_{\text{CP}} = 3.2$ Hz), 18.21 (dd, $^1J_{\text{CP}} = 17.2$, $^3J_{\text{CP}} = 7.8$ Hz). $^{31}\text{P}\{^1\text{H}\}$ NMR (162 MHz, 25 °C, CD₂Cl₂): δ 65.32 (d, $^2J_{\text{PP}} = 26.0$ Hz), 19.68 (d, $^2J_{\text{PP}} = 26.0$ Hz). $^{19}\text{F}\{^1\text{H}\}$ NMR (376 MHz, 25 °C, CD₂Cl₂): δ -79.67 (s). Elemental Analysis: calculated: C 41.50%, H 6.07%, N 3.12%; found: C 41.06%, H 6.16%, N 3.13%.

NMR Tube Experiments. NMR tubes were charged with solid reagents and the appropriate solvent or solvent mixture in a glovebox. All tubes were sealed with rubber septa. Liquid reactants were added with Hamilton microliter syringes, and tubes were thoroughly shaken after each addition. To adjust low temperatures, isopropanol/dry-ice cooling baths were used, and temperatures were checked prior to each step. Unless noted otherwise, carbon monoxide was added at low temperatures using a three-way stopcock, a compressed gas cylinder equipped with a pressure relief valve that was connected to a vacuum line, and a small Schlenk flask sealed with a rubber septum. The system was evacuated and backfilled with 1 atm (ambient pressure) of CO. Gas was transferred into the NMR tubes with 1 mL syringes, and tubes were briefly shaken after each addition. For calculating the appropriate volume, ideal gas conditions were assumed.

Computational Details. DFT calculations were performed with the Gaussian09 package²⁸ using the B3LYP²⁹ functional and the LANL2DZ ECP³⁰ with the associated valence basis set on the Pd atom and the 6-31G(d)³¹ basis set on all the other atoms. All geometries were localized in the gas phase at the B3LYP level. Minima were localized by full optimization of the starting structures, while transition states for CO insertion and for the methanolysis reaction were approached through a linear transit procedure starting from the CO and the methanol (as a single molecule and as a three-molecule cluster) coordination intermediate and then located by a full transition state search. All structures were confirmed as minimum or transition state through frequency calculations.

In all the calculations we used the 1,2-(CH₂P^tBu)₂C₆H₄ ligand because it has a somewhat more rigid phosphine backbone compared to the 1,3-bis(di-*tert*-butylphosphino)propane ligand. This rigidity reduces the number of conformers and facilitates the identification of ground and transition states. This decision was based on the experimental observation that the two Pd(II) complexes show a similar performance in the methoxycarbonylation of methyl oleate. Finally, the linear alkyl [(P[^]P)PdCH₂(CH₂)₅COOCH₃]⁺ and the branched alkyl [(P[^]P)PdCH((CH₂)₄CH₃)COOCH₃]⁺ species were selected as smaller suitable systems to model the Pd-alkyl complexes 6 and 7 respectively (Figure S43, SI).

AUTHOR INFORMATION

Corresponding Author

stefan.mecking@uni-konstanz.de; lcaporaso@unisa.it; heiko.moeller@uni-konstanz.de

Notes

The authors declare no competing financial interest.

■ ACKNOWLEDGMENTS

P.R. gratefully acknowledges support from the Carl-Zeiss-Foundation by a graduate fellowship. S.M. is indebted to the Fonds der Chemischen Industrie.

■ REFERENCES

- (1) (a) Biermann, U.; Bornscheuer, U.; Meier, M. A. R.; Metzger, J. O.; Schäfer, H. J. *Angew. Chem., Int. Ed.* **2011**, *50*, 3854–3871. (b) Chikkali, S.; Mecking, S. *Angew. Chem., Int. Ed.* **2012**, *51*, 5802–5808.
- (2) Picataggio, S.; Rohrer, T.; Deanda, K.; Lanning, D.; Reynolds, R.; Mielenz, J.; Eirich, L. D. *Nat. Biotechnol.* **1992**, *10*, 894–898. (b) Schoerken, U.; Kempers, P. *Eur. J. Lipid Sci. Technol.* **2009**, *111*, 627–645.
- (3) Lu, W.; Ness, J. E.; Xie, W.; Zhang, X.; Minshull, J.; Gross, R. A. *J. Am. Chem. Soc.* **2010**, *132*, 15451–15455.
- (4) (a) van der Veen, L. A.; Kamer, P. C. J.; van Leeuwen, P. W. N. M. *Angew. Chem., Int. Ed.* **1999**, *38*, 336–338. (b) Selent, D.; Hess, D.; Wiese, K. D.; Röttger, D.; Kunze, C.; Börner, A. *Angew. Chem., Int. Ed.* **2001**, *40*, 1696–1698. (c) Behr, A.; Obst, D.; Westfechtel, A. *Eur. J. Lipid Sci. Technol.* **2005**, *107*, 213–219.
- (5) (a) Colquhoun, H. M.; Thompson, D. J.; Twigg, M. V. *Carbonylation*, Plenum, New York, 1991. (b) Beller, M.; Tafesh, A. M. In *Applied Homogeneous Catalysis with Organometallic Compounds*; Cornils, B., Herrmann, W. A., Eds.; Wiley-VCH: Weinheim, 2000; pp 178–201. (c) van Leeuwen, P. W. N. M.; Claver, C. In *Comprehensive Coordination Chemistry II*; McCleverty, J. A., Meyer, T. J., Eds.; Elsevier: Oxford, 2004; Vol. 9, pp 141–206.
- (6) (a) Clegg, W.; Eastham, G. R.; Elsegood, M. R. J.; Tooze, R. P.; Wang, X. L.; Whiston, K. *Chem. Commun.* **1999**, 1877–1878. (b) Clegg, W.; Eastham, G. R.; Elsegood, M. R. J.; Heaton, B. T.; Iggo, J. A.; Tooze, R. P.; Whyman, R.; Zacchini, S. *Organometallics* **2002**, *21*, 1832–1840. (c) Liu, J.; Heaton, B. R.; Iggo, J. A.; Whyman, R.; Bickley, J. F.; Steiner, A. *Chem.—Eur. J.* **2006**, *12*, 4417–4430. (d) van Leeuwen, P. W. N. M.; Zuideveld, M. A.; Swennenhuis, B. H. G.; Freixa, Z.; Kamer, P. C. J.; Goubitz, K.; Fraanje, J.; Lutz, M.; Spek, A. L. *J. Am. Chem. Soc.* **2003**, *125*, 5523–5539. (e) Donald, S. M. A.; Macgregor, S. A.; Settels, V.; Cole-Hamilton, D. J.; Eastham, G. R. *Chem. Commun.* **2007**, 562–564. (f) de la Fuente, V.; Waugh, M.; Eastham, G. R.; Iggo, J. A.; Castillon, S.; Claver, C. *Chem.—Eur. J.* **2010**, *16*, 6919–6932.
- (7) (a) McCoy, M.; Tremblay, J.-F. *Chem. Eng. News* **2009**, *87* (33), 9. (b) Harris, B. *Ingenia* **2010**, No. issue 45, 19–23.
- (8) (a) Eastham, G. R.; Heaton, B. T.; Iggo, J. A.; Tooze, R. P.; Whyman, R.; Zacchini, S. *Chem. Commun.* **2000**, 609–610. (b) Frew, J. J. R.; Damian, K.; Van Rensburg, H.; Slawin, A. M. Z.; Tooze, R. P.; Clarke, M. L. *Chem.—Eur. J.* **2009**, *15*, 10504–10513. (c) Clegg, W.; Eastham, G. R.; Elsegood, M. R. J.; Heaton, B. T.; Iggo, J. A.; Tooze, R. P.; Whyman, R.; Zacchini, S. *J. Chem. Soc., Dalton Trans.* **2002**, *17*, 3300–3308. (d) van Leeuwen, P. W. N. M.; Zuideveld, M. A.; Swennenhuis, B. H. G.; Freixa, Z.; Kamer, P. C. J.; Goubitz, K.; Fraanje, J.; Lutz, M.; Spek, A. L. *J. Am. Chem. Soc.* **2003**, *125*, 5523–5539.
- (9) (a) Pugh, R. I.; Drent, E.; Pringle, P. G. *Chem. Commun.* **2001**, 1476–1477. (b) Jiménez-Rodríguez, C.; Foster, D. F.; Eastham, G. R.; Cole-Hamilton, D. J. *Chem. Commun.* **2004**, 1720–1721.
- (10) (a) Jiménez-Rodríguez, C.; Eastham, G. R.; Cole-Hamilton, D. J. *Inorg. Chem. Commun.* **2005**, *8*, 878–881. (b) Furst, M. R. L.; Le Goff, R.; Quinzler, D.; Mecking, S.; Botting, C. H.; Cole-Hamilton, D. J. *Green Chem.* **2012**, *14*, 472–477. (c) Walther, G.; Deutsch, J.; Martin, A.; Baumann, F.-E.; Fridag, D.; Franke, R.; Köckritz, A. *ChemSusChem* **2011**, *4*, 1052–1054.
- (11) Quinzler, D.; Mecking, S. *Angew. Chem., Int. Ed.* **2010**, *49*, 4306–4308.
- (12) Stempfle, F.; Quinzler, D.; Heckler, I.; Mecking, S. *Macromolecules* **2011**, *44*, 4159–4166.
- (13) (a) Portnoy, M.; Milstein, D. *Organometallics* **1994**, *13*, 600–609. (b) Portnoy, M.; Frolow, F.; Milstein, D. *Organometallics* **1991**, *10*, 3960–3962. (c) Tóth, I.; Elsevier, C. J. *Organometallics* **1994**, *13*, 2118–2122. (d) Minghetti, G.; Bandini, A. L.; Banditelli, G.; Bonati, F.; Szostak, R.; Strouse, C. E.; Knobler, C. B.; Kaesz, H. D. *Inorg. Chem.* **1983**, *22*, 2332–2338. (e) Perez, P. J.; Calabrese, J. C.; Bunel, E. *Organometallics* **2001**, *20*, 337–345.
- (14) Baya, M.; Houghton, J.; Konya, D.; Champouret, Y.; Daran, J.-C.; Leñero, K. Q. A.; Schoon, L.; Mul, W. P.; van Oort, A. B.; Meijboom, N.; Drent, E.; Orpen, A. G.; Poli, R. *J. Am. Chem. Soc.* **2008**, *130*, 10612–10624.
- (15) (a) Dayma, G.; Gail, S.; Dagaut, P. *Energy Fuels* **2008**, *22*, 1469–1479. (b) Vatani, A.; Mehrpooya; Gharagheizi, F. *Int. J. Mol. Sci.* **2007**, *8*, 407–432.
- (16) Key resonances (–80 °C) of this reactive species are: δ^{1H} –9.80 (doublet of doublet with $^2J_{PH_{\text{non}}} = 193.0$ Hz and $^2J_{PH_{\text{iso}}} = 25.7$ Hz) for Pd–H and δ^{31P} 72.81 and 20.96 (doublet each, $^2J_{PP} = 23.6$ Hz).
- (17) For a similar complex $[(P^*P)PdCH_2CH_3]^+$, with $P^*P = 1,2$ -bis((di-*tert*-butylphosphino)methyl)benzene, δ^{13C} 32.0 with $^2J_{PC_{\text{non}}} = 38.0$ Hz and δ^{31P} 67.7 and 36.3 (doublet each, $^2J_{PP} = 31.0$ Hz) was found at –80 °C in methanol (see ref 6b).
- (18) Addition of 5.5 equiv of 1-octene to a solution of 2-CH₃OH in CD₂Cl₂/MeOH (v/v = 3/2) at –80 °C shifts the equilibrium between free olefin plus hydride and its insertion product completely towards the olefin insertion product. δ^{31P} 62.23 and 38.99 (doublet each, $^2J_{PP} = 36.0$ Hz).
- (19) Key resonances of 5-L are as follows: δ^{31P} 76.42 and 34.78 (multiplet each) for the two inequivalent phosphorus atoms and δ^{13C} 235.11 (multiplet, carbonyl group), 44.66 (multiplet, α -methylene group) and 14.17 (singlet, terminal methyl group); key resonances of 5-¹³CO are: δ^{31P} 31.49 and 28.12 (multiplet each) for the two inequivalent phosphorus atoms and δ^{13C} 232.12 (multiplet, carbonyl group), 177.82 (multiplet, coordinated ¹³CO), 62.34 (multiplet, α -methylene group) and 14.17 (singlet, terminal methyl group); multiplet coupling patterns are elucidated in the SI (Figures S18 and S19).
- (20) Key resonances of 8-L are: δ^{31P} 76.52 (doublet of doublet with $^2J_{PP} = 44.5$ Hz and $^2J_{PC_{\text{iso}}} = 16.3$ Hz) and 34.86 (doublet of doublet with $^2J_{PP} = 44.5$ Hz and $^2J_{PC_{\text{non}}} = 81.7$ Hz) for the two inequivalent phosphorus atoms. δ^{13C} 238.74 (multiplet, carbonyl group next to the Pd center), 174.93 (singlet, carbonyl group at chain end) and 51.69 (doublet, methoxy group). Multiplet coupling patterns are elucidated in the SI (Figure S28).
- (21) Key resonances of 8-¹³CO are: δ^{31P} 31.50 (doublet of doublet with $^2J_{PP} = 60.5$ Hz and $^2J_{PC_{\text{non}}} = 76.8$ Hz) and 28.20 (doublet of doublet with $^2J_{PP} = 60.5$ Hz and $^2J_{PC_{\text{non}}} = 76.0$ Hz and $^2J_{PC_{\text{iso}}} = 23.2$ Hz) for the two inequivalent phosphorus atoms. δ^{13C} 232.11 (multiplet, carbonyl group next to the Pd center), 177.82 (multiplet, coordinated ¹³CO), 174.93 (singlet, carbonyl group at chain end) and 51.69 (doublet, methoxy group). Multiplet coupling patterns are elucidated in the SI (Figure S29).
- (22) Key resonances of 9 are: 58.31 (doublet of doublet with $^2J_{PP} = 49.6$ Hz and $^2J_{PC_{\text{iso}}} = 15.8$ Hz) and 24.06 (doublet of doublet with $^2J_{PP} = 49.6$ Hz and $^2J_{PC_{\text{non}}} = 114.9$ Hz) for the two inequivalent phosphorus atoms. δ^{13C} 222.61 (multiplet, carbonyl group next to the Pd center), 182.49 (doublet, carbonyl group coordinated to the Pd center), 72.48 (broad multiplet, methine group) and 57.08 (doublet, methoxy group). Multiplet coupling patterns are elucidated in the SI (Figure S30).
- (23) Likewise, addition of 0.5 equiv of methanol to 5-L and 5-¹³CO (prepared by addition of 1.5 equiv of ¹³CO to 4) at –80 °C resulted in fast methanolysis as evidenced by a rapid decrease of the ³¹P NMR resonances of 5-L. Immediate formation of linear methyl nonanoate and complete consumption of methanol was observed (Figure S21, SI).
- (24) Note that there is still a small amount of 2^D-CD₃OD present, as the equilibrium between free olefin plus hydride (2^P-CD₃OD) and its

insertion products (6 and 7) is not completely shifted towards the olefin insertion product.

(25) Likewise, addition of carbon monoxide to a solution of 4 (prepared by addition of 1-octene to 2^D - CD_3OD) in a CD_3OD/CD_2Cl_2 mixture (2/3 by volume) at $-80^\circ C$ resulted in formation of linear methyl nonanoate.

(26) Carr, N.; Dunne, B. J.; Mole, L.; Orpen, A. G.; Spencer, J. L. *J. Chem. Soc., Dalton Trans.* **1991**, 863–871.

(27) (a) Liu, Z.; Somsook, E.; White, C. B.; Rosaaen, K. A.; Landis, C. R. *J. Am. Chem. Soc.* **2001**, *123*, 11193–11207. (b) Babushkin, D. E.; Brintzinger, H. H. *J. Am. Chem. Soc.* **2009**, *132*, 452–453.

(28) Frisch, J.; Trucks, G. W.; Schlegel, H. B.; Scuseria, G. E.; Robb, M. A.; Cheeseman, J. R.; Montgomery Jr., J. A.; Vreven, T.; Kudin, K. N.; Burant, J. C.; Millam, J. M.; Iyengar, S. S.; Tomasi, J.; Barone, V.; Mennucci, B.; Cossi, M.; Scalmani, G.; Rega, N.; Petersson, G. A.; Nakatsuji, H.; Hada, M.; Ehara, M.; Toyota, K.; Fukuda, R.; Hasegawa, J.; Ishida, M.; Nakajima, T.; Honda, Y.; Kitao, O.; Nakai, H.; Klene, M.; Li, X.; Knox, J. E.; Hratchian, H. P.; Cross, J. B.; Bakken, V.; Adamo, C.; Jaramillo, J.; Gomperts, R.; Stratmann, R. E.; Yazyev, O.; Austin, A. J.; Cammi, R.; Pomelli, C.; Ochterski, J. W.; Ayala, P. Y.; Morokuma, K.; Voth, G. A.; Salvador, P.; Dannenberg, J. J.; Zakrzewski, V. G.; Dapprich, S.; Daniels, A. D.; Strain, M. C.; Farkas, O.; Malick, D. K.; Rabuck, A. D.; Raghavachari, K.; Foresman, J. B.; Ortiz, J. V.; Cui, Q.; Baboul, A. G.; Clifford, S.; Cioslowski, J.; Stefanov, B. B.; Liu, G.; Liashenko, A.; Piskorz, P.; Komaromi, I.; Martin, R. L.; Fox, D. J.; Keith, T.; Al-Laham, M. A.; Peng, C. Y.; Nanayakkara, A.; Challacombe, M.; Gill, P. M. W.; Johnson, B.; Chen, W.; Wong, M. W.; Gonzalez, C.; Pople, J. A. *Gaussian03*, Revision C.02; Gaussian, Inc.: Wallingford CT, 2004.

(29) Becke, A. D. *J. Chem. Phys.* **1993**, *98*, 5648–5652.

(30) (a) Dunning Jr., T. H.; Hay, P. J. In *Modern Theoretical Chemistry*; Schaefer III, H. F., Ed.; Plenum: New York, 1976; pp 1–28. (b) Hay, P. J.; Wadt, W. R. *J. Chem. Phys.* **1985**, *82*, 270–283.

(31) (a) Ditchfield, R.; Hehre, W. J.; Pople, J. A. *J. Chem. Phys.* **1971**, *54*, 724–728. (b) Hehre, W. J.; Ditchfield, R.; Pople, J. A. *J. Chem. Phys.* **1972**, *56*, 2257–2261. (c) Hariharan, P. C.; Pople, J. A. *Mol. Phys.* **1974**, *27*, 209–214. (d) Gordon, M. S. *Chem. Phys. Lett.* **1980**, *76*, 163–168. (e) Hariharan, P. C.; Pople, J. A. *Theor. Chim. Acta* **1973**, *28*, 213–222.