



## Case Report

# Mediastinal Pseudo-Tumor Tuberculosis Associated with Systemic Lupus Erythematosus

Nassima Dekdouk<sup>1, \*</sup>, Djennette Hakem<sup>1</sup>, Karima Abbaci<sup>1</sup>, Nassima Djami<sup>2</sup>, Rabah Amrane<sup>2</sup>, Rafika Boughrarou<sup>3</sup>, Brahim Mansouri<sup>3</sup>, Abdelkrim Berrah<sup>1</sup>

<sup>1</sup>Department of Internal Medicine, Mohammad-Lamine-Debaghine Hospital, Algeries, Algeria

<sup>2</sup>Department of Pneumo-Phtisiology, Mohammad-Lamine-Debaghine Hospital, Algeries, Algeria

<sup>3</sup>Department of Radiology, Mohammad-Lamine-Debaghine Hospital, Algeries, Algeria

### Email address:

ness.popouna@gmail.com (N. Dekdouk)

\*Corresponding author

### To cite this article:

Nassima Dekdouk, Djennette Hakem, Karima Abbaci, Nassima Djami, Rabah Amrane, Rafika Boughrarou, Brahim Mansouri, Abdelkrim Berrah. Mediastinal Pseudo-Tumor Tuberculosis Associated with Systemic Lupus Erythematosus. *International Journal of Cardiovascular and Thoracic Surgery*. Vol. 3, No. 5, 2017, pp. 63-66. doi: 10.11648/j.ijcts.20170305.15

**Received:** May 27, 2017; **Accepted:** June 16, 2017; **Published:** October 24, 2017

**Abstract:** We report the singular association of mediastinal pseudo-tumoral tuberculosis [TB] with systemic lupus erythematosus [SLE]. D. I., 22 years old woman, is followed for a SLE since 2006 controlled by hydrochloroquine 'HCQ' 200mg twice/day and a thyroiditis of Hashimoto under levothyrox 125 mg/d. It does not relate to tuberculosis. She is hospitalized in pneumology for progressive dyspnea and chest pain. Objective clinical examination shows a conserved general condition, apyrexia T° to 37, BMI to 21.1 (without notion of loss of weight), heart beat 94 / min, respiratory rate at 24 cycle/min and blood pressure at 110/60 mmHg. The pleuropulmonary and cardiovascular examination were without abnormality and thus the remainder of the clinical examination. The image of the thoracic face fails with a right para-cardiac opacity erasing the right edge of the cortex and the CT concludes to a mediastinal tumoral process, filling the gutter vertebral and extending from T6 to T10, with tissue density presenting areas of necrosis within it. Bronchial fibroscopy finds a thickening of inter-lobar spurs and bronchial biopsies identifies a bronchial mucosa site of chronic inflammatory remodeling with presence of multi-nucleated giant cells suggesting a tuberculoid process. The parameters of the hemogram were normal and the inflammatory syndrome was attested by both the increase ERS at 54 mm and the level of CRP at 12 mg/l. The smears, negative on direct examination, will prove positive for culture on Lowenstein medium. Antituberculosis treatment has been prescribed with good clinical, bacteriological and radiological progress. Long-term asymptomatic mediastinal pseudo-tumoral tuberculosis can be revealed at the compressive stage by dyspnea and chest pain. The fear of lymphoma requires biopsies with pathological examinations which sometimes reveal benign affections (tuberculosis, sarcoidosis in their tumor forms) which can enamel the autoimmune disorders characterizing a SLE.

**Keywords:** Mediastinal Pseudo Tumor, Tuberculosis, Systemic Lupus Erythematosus

## 1. Introduction

Systemic Lupus Erythematosus (SLE) is an autoimmune systemic disorder of unknown cause with various manifestations involving multiple organ systems. Genetic factors include specific genes and chromosomal defects, and hormonal and environmental factors, such as vitamin D, are

well-known immunomodulators of disease [1] [2].

Infections are the second leading cause of death in SLE patients (25%), immediately after the complications related to disease activity (26%) [3-6] and concerned most commonly tuberculosis with significant morbidity and mortality in endemic region, with more frequent and more extensive extra - pulmonary involvement [6-10].

## 2. Aim

To report a case of young female followed for SLE, 7 years ago, investigated for breathlessness and chest pain. Many diagnoses were initially evoked (pulmonary embolism, infection, shrinking lung syndrome ...) but the investigations (imaging, microbiology) established a rare and special diagnosis of pseudo-tumoral form of mediastinal tuberculosis.

## 3. Materials and Methods

### Case Report

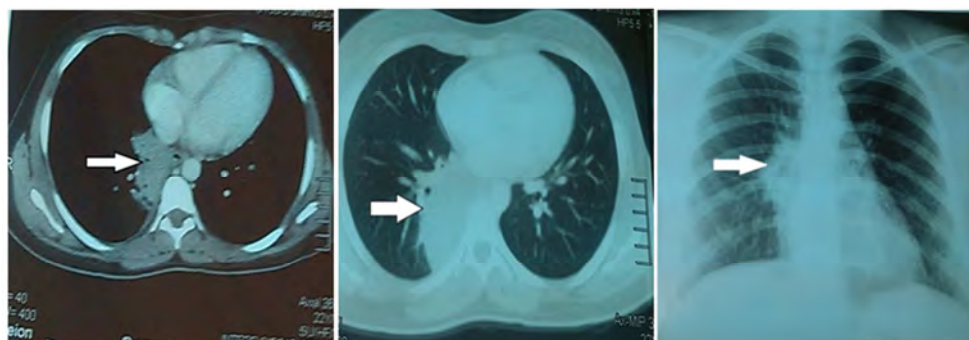
DI, a 22-year-old female had been diagnosed with SLE since 2006. Her main symptoms consisted of polyarthritis, photosensitivity, oral ulcers, leukopenia, thrombopenia and positive antinuclear antibodies (ANA and anti-DNA). The SLE was stabilized for long time by low dose of corticosteroids (7.5 mg/day) and hydroxychloroquine (Plaquenil) as well for the Hashimoto thyroiditis which was controlled by 125 mg /d of Levothyroxine.

She is explored in emergency department with a 2-week history of worsening chest pain associated with positional dyspnea, dry cough and dysphagia. He had no significant past

history of medication and denied any significant family history and notion of contagious tuberculosis.

On physical examination, the general condition of the patient was conserved with afebrile temperature at 37°C, BMI to 21.1 (without recent loss of weight), CF to 94/min, RF to 24 cycle /min and blood pressure at 110/60 mmHg. There was no lymphadenopathy. Cardiovascular, respiratory and abdominal examinations were normal. There was no evidence of arthritis, rashes, alopecia or oral ulcers evoking involvement of SLE. The SLE Disease Activity Index (SLEDAI), measured at the diagnosis time of tuberculosis, was estimated at 11.

Chest radiography illustrated fails with a right para-cardiac opacity erasing the right edge of the heart. CT concludes a mediastinal tumor process, filling the gutter vertebral and extending from T6 to T10, with tissue density with areas of necrosis within it (arrow).



**Figure 1.** The image of the thoracic face fails a right para-cardiac opacity erasing the right edge of the heart. CT concludes a mediated tumor process, bridging the vertebral gutter and extending from T6 to T10, tissue density with areas of necrosis within it (arrow).

### Laboratory Values:

Hemogram showed level of hemoglobin at 9.1 g/dl, with MCV at 80.8 fland MCHC at 30.4 g/dl; we noted a mild leucopenia with lymphopenia (total leukocytes, 3,000 / mm<sup>3</sup>; lymphocytes, 700 / mm<sup>3</sup>) and the level of platelets at 229 x 10<sup>9</sup>/l. The erythrocyte sedimentation rate (ESR) was at 64 mm/hr, a C-reactive protein within the normal range, an elevated lactate dehydrogenase of 455 U/L (normal range, 120 to 240 U/L), and a serum calcium of 7.2 mg/dL. Renal function tests were normal (serum creatinine, 0.7 mg/dL; creatinine clearance, 102 mL/min), and microscopic urinalysis was also without abnormalities. Total serum protein and albumin were decreased (5.53 g/dL and 2.36 g/dL), and 24-hour urinalysis showed a proteinuria of 10 g/24 hours. Total cholesterol was approximately at 250 mg/dL. The serum albumin was at 18 g/l [normal range (NR) 35-50]. Livers tests showed alkaline phosphatase at 207IU/l (NR 30-300), alanine aminotransferase (ALT) at 34 IU/l (NR 5-35), aspartate aminotransferase (AST) at 28 IU/l (NR 5-35), gamma-glutamyltranspeptidase (γGT) at 23 IU/l (NR 11-51),

total cholesterol at 5.9 mmol/l (NR 3.6-5.2), triglycerides at 3.5 mmol/l (NR 0.4-1.5) and normal coagulation profile; viral hepatitis serology was negative. Serum iron at 54 μmol/l (50-175); vitamin D at 11.1 ng / ml (30-60) ng/ml. The thyroid tests showed level TSHus at 48.48 U ui/ml (0.2-4) FT4 at 15.44 pmol/l (8.02-24.5). Antibodies against double stranded DNA were positive at 454 IU/mL (0-7) and we observed hypocomplementemia (C3, 33 mg/dL (80-180) but C4 was normal, 22mg/dL (10- 40). The smears, negative on direct examination, will prove positive for culture on Lovenstein medium.

## 4. Results and Discussion

### 4.1. Management and Out-come

Antituberculosis treatment has been prescribed for 6 months – referring to the local recommendations- with good clinical, bacteriological and radiological progress (Figure 2) without any adverse effects referring to the clinical context

(not acute SLE observed particularly).



Figure 2. Complete cleaning of the lung lesion after 06 months of treatment.

4.2. Discussion

Mycobacterium tuberculosis undergoes lympho-heamatogenous dissemination after entering the respiratory tract. Typically the mediastinal and hilar lymph nodes are the first lymphatic tissues. M. tuberculosis will encounter and it may then spread to other organ systems [11] [12].

In immunocompetent individuals, tuberculum organisms are ingested by macrophages, which subsequently present the antigen load to T-lymphocytes. Macrophages are activated through the actions of T-cell--mediated antibody production enabling them to destroy the bacilli [13].

What factors predisposed Systemic Lupus Erythematosus patients to infection? (table 1)

The susceptibility to infections in SLE patients may be explained by several intrinsic and acquired defects in the immune system, related to the disease itself or to immunosuppressive [5]. These include various mechanisms as impairment of B lymphocytes activity, intrinsic defects in the innate immune function such as defects in chemotaxis, abnormalities in phagocytosis, decreased immune complex clearance, and delayed hypersensitivity [13-16]; lymphocytes from SLE patients are responsive to suppressor factor produced by normal adherent cells treated with M. tuberculosis and SLE lymphocytes so treated will suppress lymphocyte activation to PHA and a variety of mitogens and antigens. Adherent cells from SLE patients, however, when treated with M. tuberculosis were unable to produce the factor which would activate either normal or SLE suppressor lymphocytes [13] [17].

In addition, deficiencies in early and late complement components, and carriage of variant alleles of the mannose-binding lectin, predispose SLE patients to infections [8] [16] [18-20]. The most important factors suggesting community acquired infections in SLE patients are immunosuppressive therapy (intravenous pulses of

methylprednisolone and intravenous monthly cyclophosphamide) [5] [7] [10] [17] [19] [20] and the most recent treatment of autoimmune diseases as biotherapy (anti-CD20, anti-TNF...) [20] [21] while antimalarial drugs seem to have a protective effect [5] [19] [20].

Table 1. Risk factors for infection [4] [10].

Leukopenia
Acquired hypocomplementaemia
Genetic complement deficiency
MBL deficiency
Hypogammaglobulinaemia
Splenectomy
Functional hyposplenism
Prednisolone dose
Immunosuppressive medication
Biologicse. g., rituximab

The Mediastinal masses are routinely encountered in clinical practice and a wide range of differential diagnoses must be considered (lymphoma; sarcoidosis) [17]. A less common cause is tuberculosis, a disease recognized for its atypical presentations attributed to its ability to affect almost any organ system ( anterior mediastinal mass)[12] particularly in this context (autoimmune disease, long time of corticosteroid therapy, lymphopenia and tuberculosis endemic area).

5. Conclusion

As it happened with SLE patients, the clinical suspicion of TB is hindered by several factors. On the one hand, the atypical presentations of TB, in a military pattern, or with mediastinal lymphadenopathy, or as extra pulmonary disease, pose a great diagnostic challenge, since these presentations may point to a bacterial etiology or to other diseases such as lymphoma.

Mediastinal lymphadenopathy is rare in post-primary tuberculosis. Regardless of this rarity, the occurrence of mediastinal pseudo tumor in clinical history of no-smoker SLE, physician always do to think of tuberculosis in the differential diagnosis especially in an endemic area of tuberculosis.

References

[1] Yehuda Shoenfeld MD; Boris Gilburd PhD; Mahmud Abu-Shakra MD The Mosaic of Autoimmunity: Genetic Factors Involved in Autoimmune Diseases – 2008 The Mosaic of Autoimmunity, IMAJ 2008; 10: 3–7.

[2] Y. Shoenfeld et al. The Mosaic of Autoimmunity: Prediction, Autoantibodies, and Therapy in Autoimmune Diseases – 2008; IMAJ 2008; 10: 13–19.

[3] Ricard Cervera et all, and the European Working Party on Systemic Lupus Erythematosus; Morbidity and Mortality in Systemic Lupus Erythematosus During a 10-Year Period A Comparison of Early and Late Manifestations in a Cohort of 1,000 Patients (Medicine 2003; 82: 299–308).

- [4] Jacqueline Trager, MD, and Michael M. Ward, MD, MPH\* Mortality and causes of death in systemic lupus erythematosus *Current Opinion in Rheumatology* 2001, 13: 345–351.
- [5] Gian Domenico Sebastiani, Annamaria Iuliano, Immacolata Prevete & Giovanni Minisola. Opportunistic infections in systemic lupus erythematosus *Int. J. Clin. Rheumatol.* (2012) 7 (3), 275–279.
- [6] A. Doria, M. Canova, M. Tonon, M. Zen, E. Rampudda, N. Bassi, F. Atzeni, S. Zampier, A. Ghirardello, Infections as triggers and complications of systemic lupus erythematosus. *Autoimmunity Reviews* 8 (2008) 24–28.
- [7] J.-E. Yun, S.-W. Lee, T.-H. Kim, J.-B. Jun, S. Jung, S.-C. Bae, T.-Y. Kim, D. -H. Yoo The incidence and clinical characteristics of Mycobacterium tuberculosis infection among systemic lupus erythematosus and rheumatoid arthritis patients in Korea *Clinical and Experimental Rheumatology* 2002; 20: 127-132.
- [8] Harikrishna et al. Disseminated tuberculosis in a patient with systemic lupus erythematosus. *J ClinSci Res* 2012; 1: 199-203.
- [9] Kunchok Dorjee, Kerry L Dierberg, Tsetan D Sadutshang and Arthur L Reingold First report of multi-drug resistant tuberculosis in a systemic lupus erythematosus Patient. Dorjee et al. *BMC Res Notes* (2015) 8: 337.
- [10] Savino Sciascia, Maria Jose Cuadrado, Mohammed Yousuf Karim, Management of infection in systemic lupus erythematosus; *Best Practice & Research Clinical Rheumatology* 27 (2013) 377–389.
- [11] Prasanta Raghav Mohapatra, Ashok Kumar Janmeja; tuberculous Lymphadenitis; *J Assoc Physician India* August 2009; 57: 585-590.
- [12] Maguire et al. Isolated anterior mediastinal tuberculosis in an immunocompetent patient *BMC Pulmonary Medicine* (2016) 16: 24.
- [13] Kim et al. Pulmonary Tuberculosis in Patients with Systemic Lupus Erythematosus; *AJR* December 1999; 173: 1639-1642.
- [14] F. M. Ribeiro & M. Szyper-Kravitz & E. M. Klumb & G. Lannes & F. R. E. Ribeiro & E. M. M. Albuquerque & Y. Shoenfeld, Can Lupus Flares be Associated with Tuberculosis Infection? *Clinic Rev Allerg Immunol* (2010) 38: 163–168.
- [15] Hanspeter Waldner; The role of innate immune responses in autoimmune disease development; *Autoimmunity Reviews* 8 (2009) 400–404.
- [16] Barri J, Fessler MD, infection diseases in systemic lupus erythematosus: risk factors, management and prophylaxis; *Best Practice and Research Clinical Rheumatology* 16, No 2, pp. 281-291, 2002.
- [17] A. A. WADEE, A. J. GEAR & A. R. RABSON, Production of a suppressor factor by human adherent cells treated with Mycobacterium tuberculosis: absence in systemic lupus erythematosus; *Clin. exp. Immunol.* (1981) 46, 82-88.
- [18] María del Mar Arenas Miras, Carmen Hidalgo Tenorio, y Juan Jimenez Alonso La infección tuberculosa en pacientes con lupus eritematoso sistémico: situación en España; *Reumatol Clin.* 2013; 9 (6): 369–372 (español).
- [19] Judith A. James, Andrea L. Sestak, and Evan S. Vista SLE and Infections (DUBOIS' Lupus Erythematosus and Related Syndrome Edited by Daniel J. Wallace, MD, FACP, FACR; Bevra Hannahs Hahn, MD); (2012), 45; 555-562.
- [20] Graziela Carvalheiras, Mariana Brandão, Vital Domingues, Esmeralda Neve, Júlia Vasconcelos, Isabel Almeida, Carlos Vasconcelos; Lymphocytes and Infection in Autoimmune Diseases (infection and autoimmunity Second Edition Edited by YEHUDA SHOENFELD, NANCY AGMON-LEVIN, NOEL R. ROSE), (2015), 7; 109-131.
- [21] Milan Buc and Jozef Rovensk; Tuberculosis and SLE-Like Symptoms as a Complication of Biological Anti-TNF Therapy (Infection and Autoimmunity edited by Y. Shoenfeld and N. R. Rose) (2004); 623-628.