

Megapixels @ Megahertz The AGIPD High-Speed Cameras for the European XFEL

Aschkan Allahgholi^a, Julian Becker^a, Annette Delfs^a, Roberto Dinapoli^b, Peter Gttlicher^a, Heinz Graafsma^{a,c}, Dominic Greiffenberg^b, Helmut Hirsemann^a, Stefanie Jack^a, Alexander Klyuev^a, Hans Krger^d, Manuela Kuhn^a, Torsten Laurus^a, Alessandro Marras^a, Davide Mezza^b, Aldo Mozzanica^b, Jennifer Poehlsen^a, Ofir Shefer Shalev^a, Igor Sheviakov^a, Bernd Schmitt^b, Jrn Schwandt^c, Xintian Shi^b, Sergej Smoljanin^a, Ulrich Trunk^{a,*}, Jiaguo Zhang^b, Manfred Zimmer^a

^aDeutsches Elektronensynchrotron - DESY, Hamburg, Germany

^bPaul Scherrer Institut - PSI, Villigen, Switzerland

^cUniversitt Hamburg, Hamburg, Germany

^dUniversitt Bonn, Bonn, Germany

^eMid-Sweden University, Sundsvall, Sweden

Abstract

The European XFEL is an extremely brilliant Free Electron Laser Source with a very demanding pulse structure: trains of 2700 X-Ray pulses are repeated at 10 Hz. The pulses inside the train are spaced by 220 ns and each one contains up to 10^{12} photons of 12.4 keV, while being ≤ 100 fs in length. AGIPD, the Adaptive Gain Integrating Pixel Detector, is a hybrid pixel detector developed by DESY, PSI, and the Universities of Bonn and Hamburg to cope with these properties.

It is a fast, low noise integrating detector, with single photon sensitivity (for $E_\gamma \gtrsim 6$ keV) and a large dynamic range, up to 10^4 photons at 12.4 keV. This is achieved with a charge sensitive amplifier with 3 adaptively selected gains per pixel. 352 images can be recorded at up to 6.5 MHz and stored in the in-pixel analogue memory and read out between pulse trains. The core component of this detector is the AGIPD ASIC, which consists of 64×64 pixels of $200 \mu\text{m} \times 200 \mu\text{m}$. Control of the ASIC's image acquisition and analogue readout is via a command based interface. FPGA based electronic boards, controlling ASIC operation, image digitisation and 10 GE data transmission interface AGIPD detectors to DAQ and control systems.

An AGIPD 1 Mpixel detector has been installed at the SPB¹ experimental station in August 2017, while a second one is currently commissioned for the MID² endstation. A larger (4 Mpixel) AGIPD detector and one to employ Hi-Z sensor material to efficiently register photons up to $E_\gamma \approx 25$ keV are currently under construction.

Keywords: AGIPD, X-Ray Detector, Photon Science, European XFEL, Free Electron Laser, Hybrid Pixel Detector

1. The European XFEL

The European X-Ray Free Electron Laser (XFEL) [1, 2] in Hamburg is currently the most brilliant X-Ray source (fig. 1) in the world. It provides extremely focused, fully coherent X-Ray pulses. Trains of 2700 of these pulses are repeated at 10 Hz. The pulses inside the train are spaced

*Corresponding author

Email address: ulrich.trunk@desy.de (Ulrich Trunk)

¹Single particles, Clusters and Biomolecules

²Materials Imaging and Dynamics

by 220 ns and contain up to $10^{12} \times 12.4 \text{ keV}^3$ photons each, while being $\leq 100 \text{ fs}$ in length (fig. 2). The high intensity per pulse will allow recording diffraction patterns of single molecules or small crystals in a single shot. As a consequence 2D detectors have to cope with a large dynamic range, requiring single photon sensitivity e.g. for single molecule imaging, and registering more than 10^4 photons/pixel in the same image for the case of liquid scattering or intense Bragg Spots⁴. AGIPD is one of three detectors developed to cope with the timing requirements of the European XFEL[3]. The other two are the Large Pixel Detector (LPD) [4] with $500 \mu\text{m} \times 500 \mu\text{m}$ pixel size and 1 Mpixel installed, and DSSC [5], a 1 Mpixel detector with $200 \mu\text{m} \times 230 \mu\text{m}$ hexagonal pixels, based on silicon drift diodes or Depfet sensors with Signal Compression (hence the acronym), currently under development. While LPD is targeted at the same energy range as AGIPD, it differs from it by a lower spatial and energy resolution, but covers a much bigger area and operates in ambient. DSSC like AGIPD operates in vacuum, but can detect lower photon energies - on the expense of a nonlinear response and a lower frame rate at low energies.

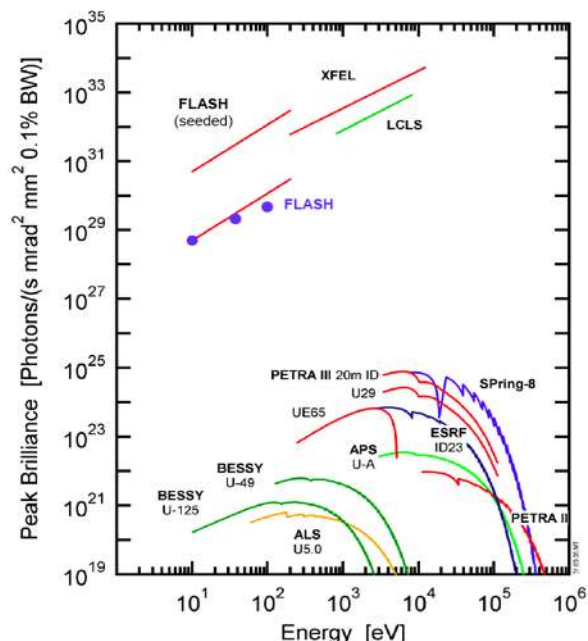


Figure 1: Brilliance of FELs and Synchrotron sources.

Future upgrades of the European XFEL planned for the 2nd half of the 2020ies include continuous wave (CW) operation at a pulse rate of $\approx 100 \text{ kHz}$ and a so-called *long pulse* mode at $\approx 200 \text{ kHz}$ with 500 ms bursts repeating at 1 Hz[6]. At these rates moving or exchanging solid samples during a burst becomes feasible, which would reduce the radiation damage of samples considerably and thus enable european X FEL for new classes of experiments and materials. To exploit these modes new detectors with a different readout architecture are needed, since AGIPD hardware can⁵ only operate up to $\approx 16 \text{ kHz}$ CW frame rate.

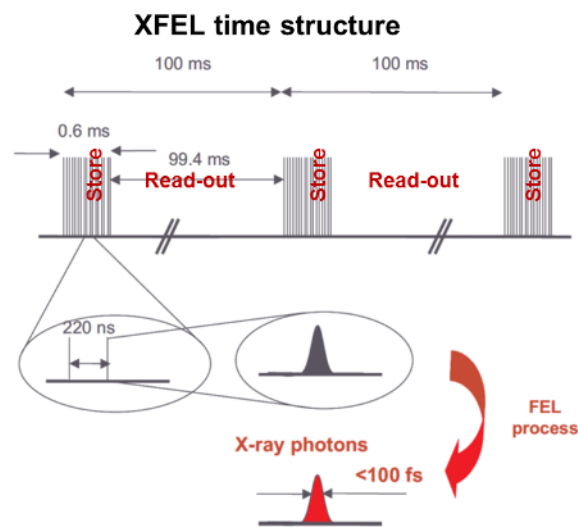


Figure 2: Time structure of the European XFEL source.

³12.4 keV is the maximum fundamental photon energy of the SASE1 and SASE2 undulators at the European XFEL, providing beam for the AGIPD-equipped instruments.

⁴Droplets and ice crystals are frequently encountered in gas and liquid jet sample delivery setups

⁵The firmware for the readout system would have to send commands to the ASIC in a different order

2. The AGIPD Detector

AGIPD [7, 8, 9, 10] is a hybrid pixel detector, developed by DESY, the Paul Scherrer Institute and the Universities of Bonn and Hamburg to meet the requirements for the use at the European XFEL. It consists of 500 μm thick Silicon sensors, manufactured by SINTEF, Hamamatsu and ADCVACAM, to provide a high efficiency ($\text{QE} \geq 98\%$) up to 12.4 keV photon energy. While the sensors efficiently shield the ASICs underneath from radiation, the sensors themselves will collect a substantial amount of radiation dose during their expected lifetime. Special design measures have been taken to mitigate radiation damage and its effects [11]. Each sensor features 512×128 pixels, which are $200 \mu\text{m} \times 200 \mu\text{m}$ in size and pitch as a good compromise. 8×2 AGIPD ASICs are bump-bonded to each sensor for readout. Larger detector systems of 1- or 4-megapixels are composed by tiling these sensors⁶. The high photon flux together with single photon sensitivity require the detector to operate in vacuum, in order to prevent the intense beam from interacting with ambient air or exit windows, which would cause a huge background. In turn a vacuum vessel is an integral part of the detectors. The 1 Mpixel detectors at the SPB and MID experimental stations have the 4×4 sensor modules arranged on four movable quadrants⁷. These can be arranged to form a hole for the direct beam to prevent it from hitting detector components and inflicting damage to the system. The intense beam and the experiments envisioned also require a huge dynamic range, which can reach 10^4 photons/pixel/image at 12.4 keV. To cope with this, AGIPD adaptively lowers the sensitivity of the preamplifiers, independently for each pixel in two steps. Furthermore the system has to comply with the rather inconvenient time structure of the European XFEL. Since it is not possible to read out an image within 220 ns, the detector has to record as many images as possible during a pulse train and read these out during the 99.4 ms gap in-between the trains.

⁶The minimum distance of the individual sensor tiles are 0.4 mm in horizontal and 3.4 mm in vertical direction respectively.

⁷The AGIPD 1 Mpixel detector for the HIBEF endstation features a different layout

3. The AGIPD readout ASIC

The core functionality of the AGIPD detector is implemented in the readout ASIC [13, 14, 15]. It is manufactured in IBM/Global Foundries cmrf8sf (130 nm) technology and contains 64×64 pixels of $200 \mu\text{m} \times 200 \mu\text{m}$. The circuit in each pixel (fig. 3) contains a charge sensitive preamplifier based on an inverter core with threefold switchable gain. This gain switching is implemented by adding capacitors of 3 pF and 10 pF to the initial preamplifier feedback of 60 fF. A discriminator is connected to the preamplifier output and triggers an adaptive gain selection, whenever this output exceeds a selected threshold. A correlated double sampling (CDS) stage removes reset and attenuates low-frequency noise components from the preamplifier output [16], such that the detection of single photons⁸ is feasible. The output of the CDS, as well as the selected gain is sampled in a capacitor based analogue memory for 352 images, which occupies about 80 % of a pixel's area. It is based on n-FET in n-well capacitors and dual PMOS switches for radiation tolerance and low leakage, since the analogue signal must not deteriorate during several 10 ms of storage time. For readout each pixel features a 2nd charge sensitive buffer. Last but not least each pixel features two sources of electrical stimuli: A constant current source and a pulsed capacitor, which can be connected to the preamplifier input. A command based interface and control circuit provides random access to the memory and controls the row-wise readout of the data via multiplexers to four differential analogue ports. The random access scheme allows overwriting image data within a bunch train, which is compliant with the European XFEL's vetoing schema to maximise efficiency. The data of individual 'amplitude' and 'gain' frames will be combined to single images by the readout electronics⁹. The power consumption of an ASIC is typically around 1.0 A at 1.5 V. To ensure sufficient radiation tolerance of the ASIC, individual components and building blocks have been tested for doses up to several 10 kGy, e.g. in [12].

⁸down to ≈ 6 keV with $\text{SNR} \geq 5\sigma$

⁹The current firmware of the AGIPD 1 Mpixel detectors at SPB and MID reads 300 separate 'amplitude' and 'gain' frames, which are combined offline.

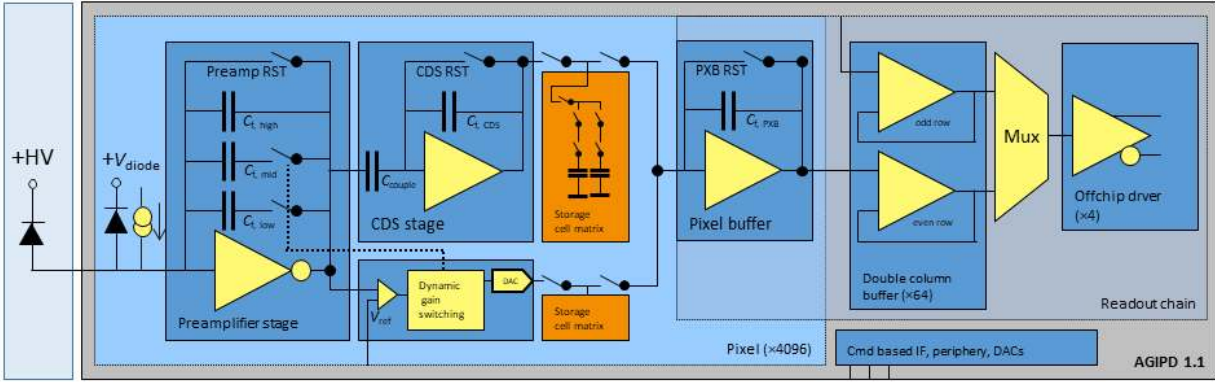


Figure 3: Circuit schematic of the AGIPD 1.1 ASIC.

3.1. ASIC Performance

All AGIPD systems currently in use are based on the AGIPD 1.1 version¹⁰ of the ASIC, which has been thoroughly characterised electrically and with a sensor. Since the medium and low gain settings are not accessible with lab X-Ray sources, an IR laser has been used for characterisation. This way an ENC¹¹ of $\approx 320e^-$ was measured¹², as fig. 4 shows. This value corresponds to a signal to noise ratio $> 10\sigma$ for a single 12.4 keV photon in the high gain [17]. Fig. 4 furthermore shows, that the noise in all gain settings is always less than the limit imposed by the Poisson statistics intrinsic to the discrete nature of the impinging photons.

The dynamic range was measured up to $344 \times 10^6 e^-$ or 10^4 photons of 12.4 keV, as fig. 5 shows. The linear fits in fig. 5 also confirm a nonlinearity better than 0.44 % up to 5×10^3 photons of 12.4 keV. The sensitivity to single photons is confirmed by Fig. 6.

¹⁰A brief description of earlier versions and prototypes of the ASIC can be found in [12].

¹¹Equivalent Noise Charge

¹²Sacrificing dynamic range by selecting the high gain of the CDS, ENC $\approx 240 e^-$ can be reached.

4. AGIPD Calibration Procedure

Calibrating a detector system with multiple gains is a non-trivial task, since the medium and low gain settings of the preamplifier are not easily accessible with radiation sources. While the intensity of the direct beams at FELs and synchrotrons might be sufficient to reach these, the statistics required for the necessary precision and the associated time and radiation load, which is expected to vastly exceed that of experiments, render this approach impractical. Instead a hybrid approach based on fluorescence photons and electrical stimuli provided by the in-

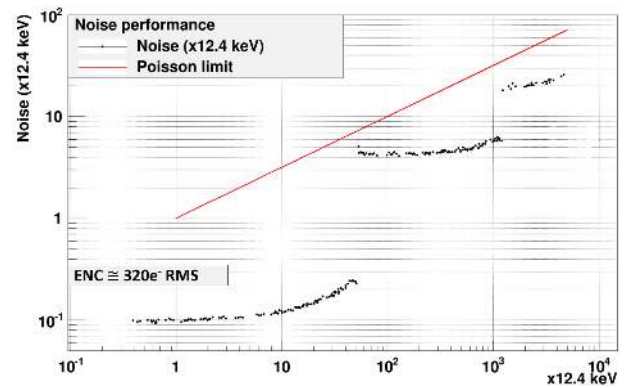


Figure 4: Noise performance of AGIPD [10]. An IR laser was used to access the different gains. Fluctuations of this stimulus add an amplitude-dependent contribution to the measured ENC.

pixel constant current source (c.f. sect.3) is used:

- Calibration of the preamplifiers high gain with fluorescence photons from Copper or Molybdenum targets.
- Scan of the preamplifiers integration time (from the nominal 150 ns to several μ s) using the in-pixel current source to determine the sensitivity of the medium and low gain settings relative to the high gain.

A big advantage of this approach is the independence from the absolute value of the current, i.e. of variations in the ASIC's manufacturing process or sensor leakage currents, whereas the indirect nature of the procedure and the long *lever arm* are mitigated by the Poissonian nature of photons, which relaxes requirements for higher intensities.

Using the DAQ system at the European XFEL, data for a full calibration can be acquired within less than 2 h, i.e. this can be conveniently performed before and after user experiments. From this data the 3 offsets (*baseline*) and gains have to be calculated. In addition gain and offset also depend on the size of the memory's capacitors. This leads in total to $(3 \text{ gains} + 3 \text{ offsets}) \times 352 \text{ storage cells} \times 1048576 \text{ pixels} = 2.219 \cdot 10^9$ constants. Calculating these

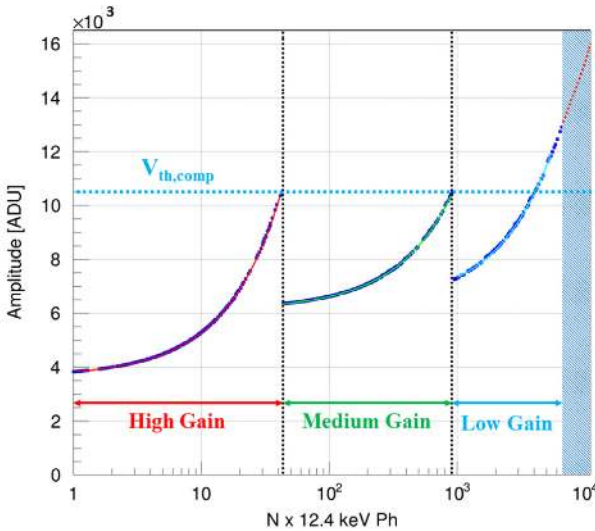


Figure 5: Transfer characteristics of AGIPD, including gain switching [15]. The solid lines are linear fits to the corresponding gain setting.

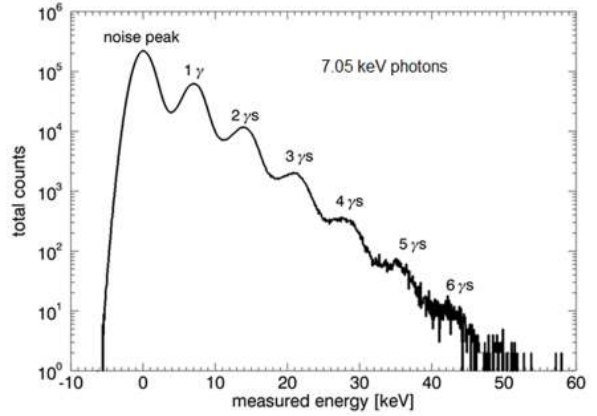


Figure 6: Spectrum of 7keV photons measured by AGIPD (data from Petra III).

constants requires ≤ 4 h on the DESY *Maxwell* computer cluster [19], and no further reduction of constants by disentanglement of the contributions from frontend and memory are performed. The calculation of the two threshold levels required to re-digitise the the gain information is also included in the calibration process. Remaining uncertainties in determining the gain even after calibration led to the further improved AGIPD 1.2 readout ASIC.

5. AGIPD Detector Systems at SPB & MID

The image planes of all AGIPD cameras are composed from *Frontend Modules* (FEM). These are constructed from Silicon sensor tiles, to which 8×2 AGIPD ASICs are bump-bonded by means of Sn/Ag or Sn/Pb bumps. The sensor tiles are p-on-n type with implant sizes and metal overhangs specially tailored to avoid *dead pockets*, where charges would be trapped and contribute to radiation damage, as well as to facilitate bias voltages up to 900 V [11]. The latter is required to overcome so called *plasma effects* [18], when the impinging radiation e.g. on a Bragg spot creates charge carrier densities able to effectively shield of the drift field. For the first user experiments bias voltages of 300 V or 500 V were applied.

Further parts of a frontend module are an LTCC¹³ carrier board, to which the sensor assemblies are glued and wire bonded and the copper interposer, to which the LTCCs are bolted. For the AGIPD 1 Mpixel detectors for SPB and MID four of these frontend modules are attached to a copper cooling block to form a quadrant. This way the temperature of the modules can be lowered to $\approx 0^\circ\text{C}$. The quadrants of the 1 Mpixel systems at the SPB and MID experimental stations are attached to a wedge-shaped arrangement of linear stages and mounted inside a vacuum vessel, while the image plane sticks out of it. Connected to the experimental chamber vacuum levels down to 10^{-7} have been reached during user operation¹⁴. The movable arrangement of the quadrants permits the formation of an arbitrary hole or slot for the direct beam to pass, while the wedge shaped stages allow the driving motors to be mounted outside the vessel – on the expense of losing the orthogonality of the translation axes.

The 64 analogue signals of one frontend module are brought outside the detector’s vacuum vessel via the *vacuum board*, a PCB¹⁵ with a flexible section to compensate for the motion of the quadrants, and a vacuum flange formed by another PCB serving as the vacuum barrier. Outside the vacuum vessel PCBs with receiver amplifiers and ADCs provide digitisation of the data with 14 bit quantisation. This data is then collected by an FPGA¹⁶ and sent on via an 10 GB optical ethernet link per FEM to the data acquisition system of the European XFEL, which combines the data of individual modules to full frames and passes them on to storage. A rendering of the 1 Mpixel detectors for the SPB and MID endstations is shown in fig. 7. The power consumption of such a system is about 1.2 kW excluding cooling.

The AGIPD 1 Mpixel camera at SPB has seen continuous user operation since the first user experiments in September 2017, while an identical camera has been delivered to the MID endstation (fig. 8) in November 2018, which is currently being commissioned.

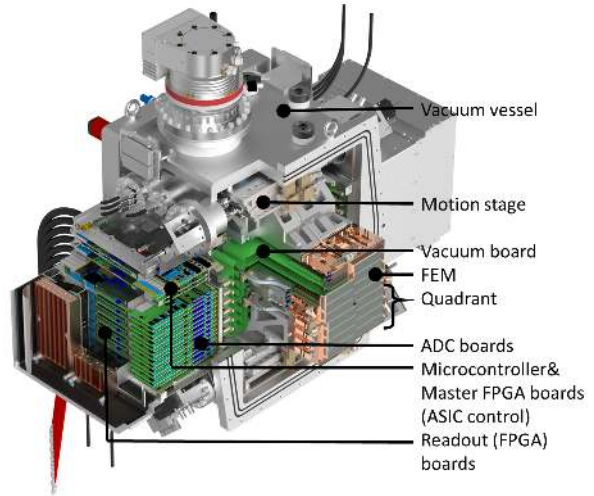


Figure 7: Rendering of the AGIPD 1 Mpixel detectors for the SPB and MID endstations. To show the locations of the components, parts of the vessel and the external housing are cut out.

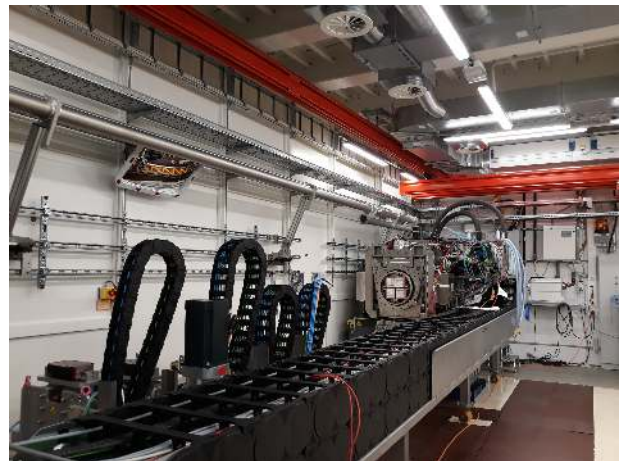


Figure 8: The AGIPD 1 Mpixel camera at the MID experimental station. The photograph shows the Detector at the end of the 8 m long spectrometer arm, prior to the installation of the flight tube.

¹³Low Temperature Co-fired Ceramics

¹⁴AGIPD can also operated at ambient pressure, but coarse vacuum levels are – depending on sensor bias – forbidden by Paschen’s law.

¹⁵Printed Circuit Board

¹⁶Field-Programmable Gate Array

6. First User Experiments with AGIPD

Due to its unique sampling rate, radiation hardness and dynamic range characteristics, AGIPD has been employed for experiments already in its prototyping stage and was e.g. used for an experiment to determine the coherence of the beam at PETRA III [20]. The AGIPD 1 Mpixel system at the SPB station of the European XFEL was successfully demonstrated during the facility's inauguration and has seen continuous use since the very first user experiments in September 2017. In that context already the very first user experiment facilitated MHz serial femtosecond crystallography (at 1.1 MHz, the rate of the accelerator during commissioning) for the first time and resolved the structure of CTX-M-14 β -lactamase for the first time [21]. The figures 9 and 10 show a diffraction pattern from Lysozyme also recorded during that experiment and powder diffraction rings from Lithium-Titanate which are used for the spatial calibration, including the tilt of individual sensor tiles with respect to the detector plane.

7. New AGIPD Detector Systems for SFX and HIBEF

For the SFX¹⁷ instrument at the European XFEL a 4 Mpixel AGIPD system is currently under construction. The image plane of this detector will consist of 56 sensors, arranged in a 4×14 pattern, formed by two halves with a vertical gap. These halves can be translated in the horizontal plane. The range lateral with respect to the beam is 30 mm, while longitudinally the image plane can be moved by 400 mm upstream – through a giant gate valve of 800 mm diameter into the experimental chamber. Unlike the 1 Mpixel systems, this system will use double FEMs, consisting of two LTCCs bolted to a cooled interposer. To cater the *side-by-side* arrangement of the sensors, which is incompatible with the arrangement of the readout electronics of the existing AGIPD 1 Mpixel systems at SPB and MID, and to implement lessons learned

from these systems, a new readout board was designed.

7.1. New readout boards

During commissioning of the AGIPD 1 Mpixel system at SPB the vast number of connectors imposed a reliability problem, which required the external housings to be opened and the boards re-seated for proper contact. The same held, albeit to a lesser extent, true for the power supply cables, which also make moving the detector a major endeavour. A further shortcoming was the central generation of the ASIC commands by two *Master FPGA* boards, which led to signal integrity issues and a limited tunability of the ADC sampling phase. In turn the basic idea of the new readout board was the elimination of connectors and power supplies and a total modularity of the system. Thus the board houses all components to operate a (single) FEM as a *stand-alone* detector (see fig. 11). Therefore, it implements the following components:

- A HV DC/DC module to generate the sensor bias.
- A connector for a mezzanine board to implement backside pulsing of the sensor as an additional means of calibration [22].
- 14-bit ADCs directly driven by the AGIPD ASICs.
- Cascaded switching and linear regulators to power the FEM's ASICs
- A Xilinx™ Zynq™ SoC¹⁸ with DDR3 memory to control the ASICs, process the ADC data and send it on via a 10 GE link.
- A microcontroller to implement secondary tasks like power sequencing, configuration and monitoring.
- A multimedia serialiser and deserialiser to interface with the European XFEL's clock and control (C&C) and interlock systems.
- A single power connector and DC/DC converters to power the board.
- A Samtec™ FireFly™ [23] 4-channel optical transceiver for communications.
- Two Lemo™ sockets for triggered stand-alone operation of an FEM without C&C signals.

The four channels of the FireFly transceiver are allocated to the 10 GE data transmission, 1 GE control interface, the serialised signals of the C&C and interlock systems and

¹⁷Serial Femtosecond Crystallography

¹⁸System-on-chip

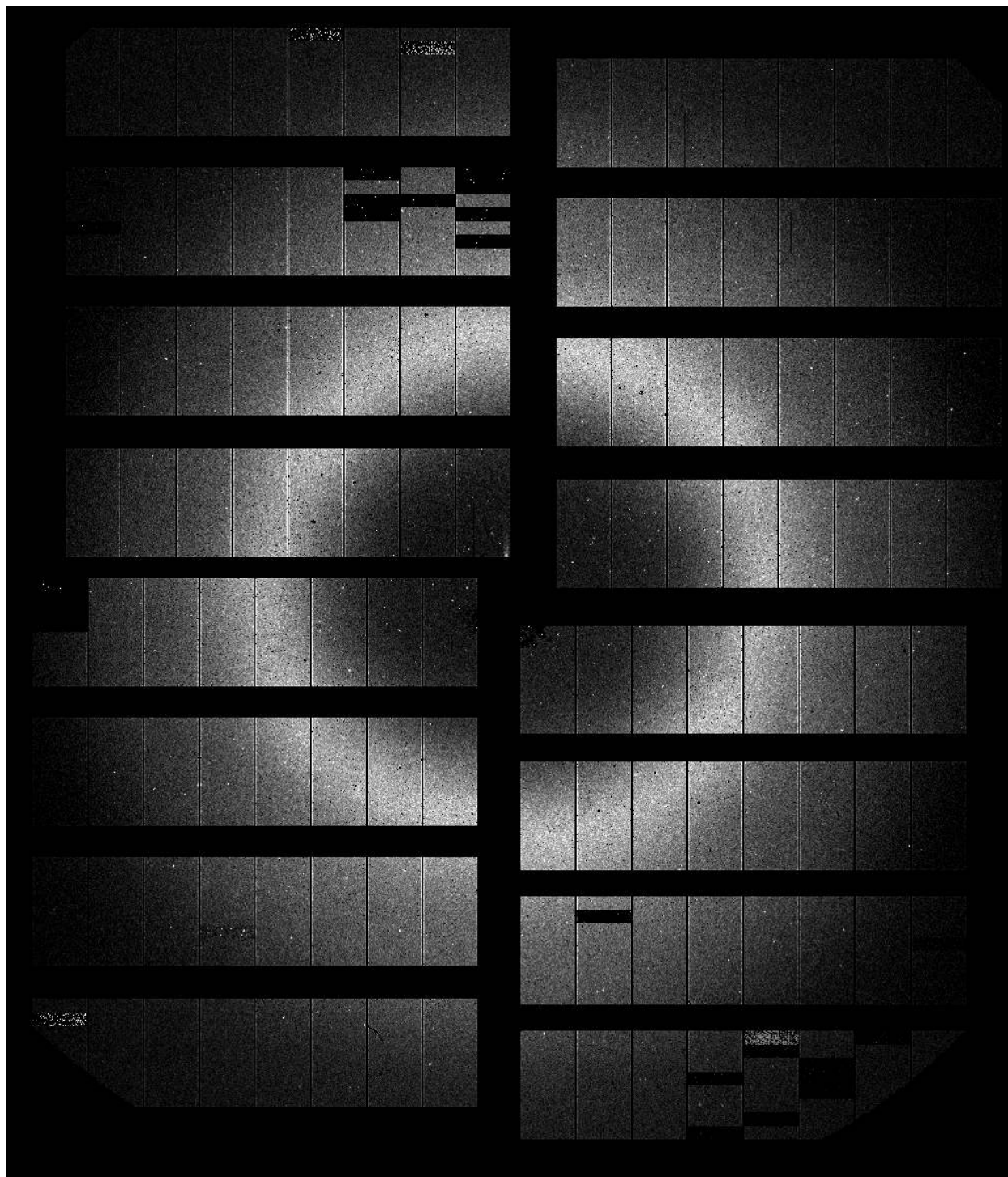


Figure 9: Diffraction pattern from one of the lysozyme micro crystals injected with a liquid jet. It is part of a *burst*, i.e. an image series recorded at 1.1 MHz by the 1 Mpixel AGIPD at SPB. The diffraction spots and the *water ring* are nicely visible. The vertical stripes are masked double-sized pixels between readout ASICs.

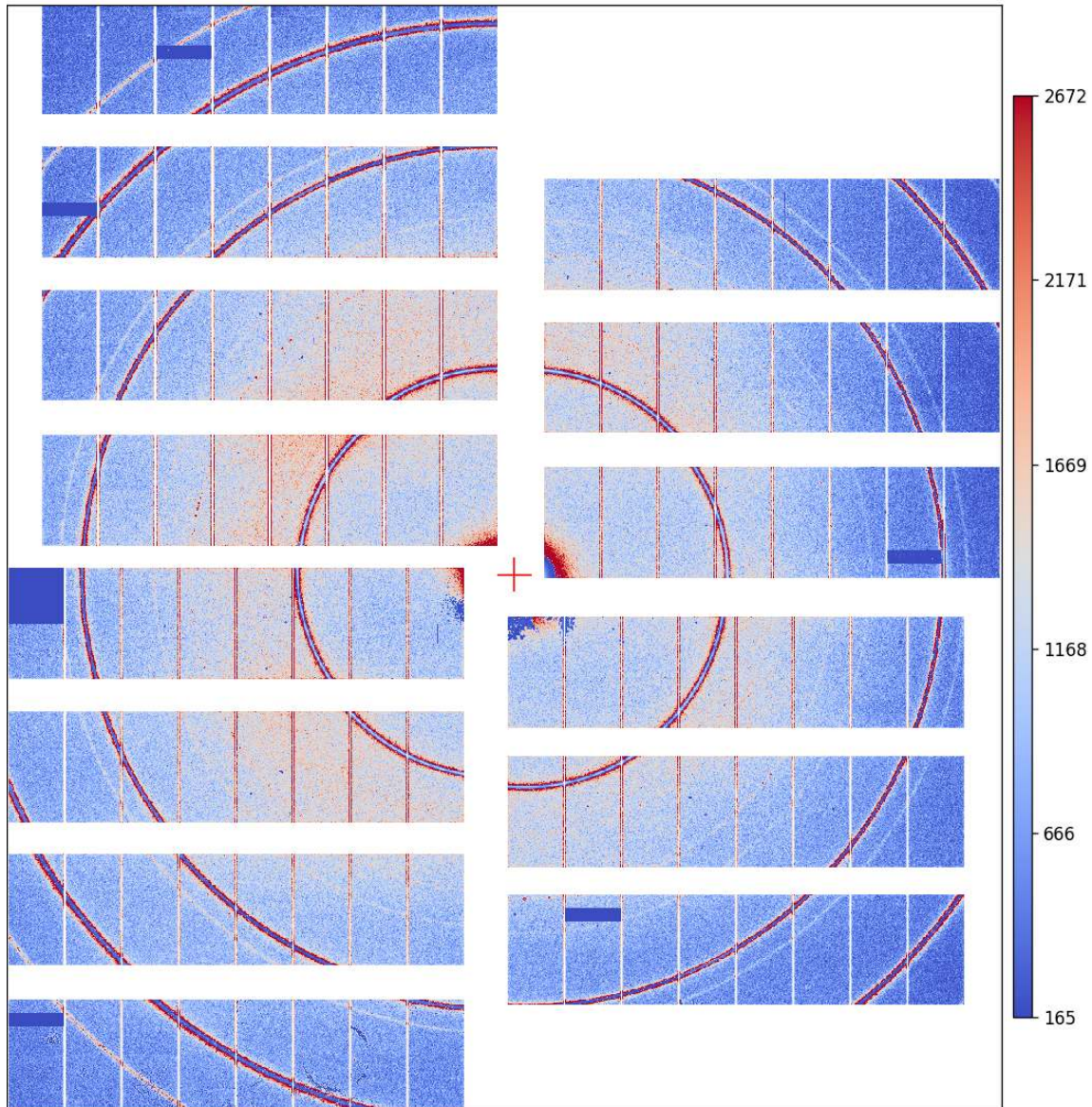


Figure 10: Powder diffraction pattern of Lithium Titanate (Li_2TiO_3). It shows the uncorrected amplitude data recorded by the 1 Mpixel AGIPD at SPB. Gain switching is visible as lower amplitudes (blue and white colour in between red lines) in the most intense parts of the diffraction rings and some of the double-sized pixels (vertical stripes) between individual readout ASICs.

an ethernet channel for debugging, which is not used during normal operation. Additional FireFly transceivers on the inside and outside of a vacuum flange re-group these signals such, that complete 4-channel ribbons with MTP

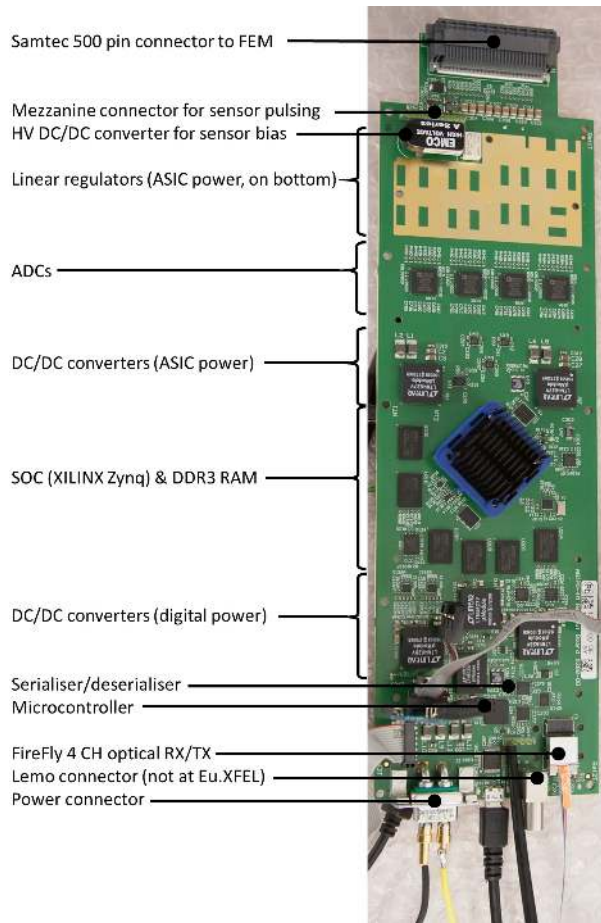


Figure 11: Photograph of a readout board used in the AGIPD systems for the SFX and HIBEF endstations.

connectors interface to the 10 GE DAQ system, the 1 GE control system and the *receiver board*, implementing the serialiser/deserialiser interface to the European XFEL’s C&C and interlock systems.

Since the readout boards are mounted within the vacuum vessel, a novell cooling concept is explored: Pairs of boards are attached to a liquid cooled heat exchanger by means of a ‘*Gap Filler*’ thermal conductive plastic.

For the HIBEF¹⁹ endstation a 1 Mpixel system, based

¹⁹Helmholtz International Beamline for Extreme Fields

on the new readout board is under construction. The image plane of this detector will be a fixed *stack* of eight double modules, with a small gap between the top and bottom four, to allow the direct beam to pass. For this detector’s image plane only a translation along the beam axis, i.e. to adjust the distance of the detector from the sample, is foreseen. Translations in the other 2 dimensions are accomplished by the *detector bench*, i.e. by moving the detector’s vacuum chamber. The biggest challenges for the HIBEF AGIPD detector system are the presence of pulsed high magnetic and electrostatic fields and photon energies ≥ 25 keV. At such energies the silicon sensor of AGIPD becomes *transparent*, i.e. inefficient and the usage of a high-Z sensor material like GaAs mandatory.

8. ecAGIPD - An electron collecting AGIPD ASIC for HIBEF

Charge carrier lifetime – especially of holes – in high-Z semiconductor materials like GaAs and CdTe is short compared to elementary semiconductors like Si or Ge [24]. Recent advancements in the production of these sensor materials [25] mitigate effects like ‘*afterglow*’ and ‘*polarisation*’ (decribed in [26]) and made compound semiconductor sensors the subject of investigations for an alternative to Germanium sensors in high-flux – high-energy imaging detectors at FELs [27, 28, 29]. In addition sensors made from high-Z materials (including Germanium) do not show the defect mechanisms of silicon decribed in [30], while the high absorption of radiation in the sensor and the low cross section of silicon at high photon energies drastically reduces the dose deposited in the readout ASICs. However the current AGIPD ASICs (and sensors) are *hole collecting* devices, and thus not suitable for high-Z materials. For this reason an electron collecting version of the AGIPD ASIC, ecAGIPD, to equip the AGIPD camera at the HIBEF endstation with high-Z sensors is being developed.

The primary difference is the lowered baseline (operating point at ≈ 400 mV) of the charge sensitive preamplifier. This is necessary to maintain a dynamic range of $\approx 10^4$ 12.4 keV photons towards the positive supply rail.

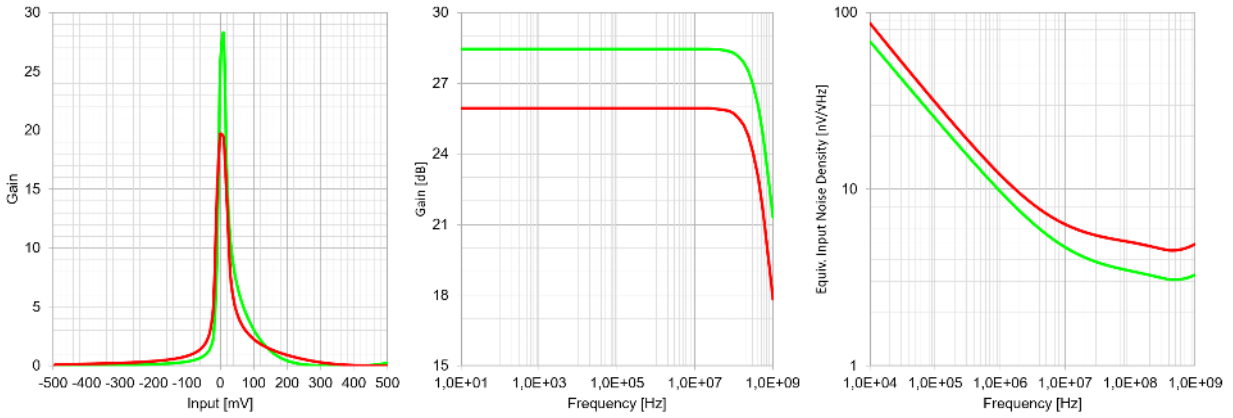


Figure 12: Spectre Simulation results showing (from left to right) gain ($\times 29$ compared to $\times 19$), frequency response (-3 dB at ≈ 500 MHz) and noise density of the preamplifier core of the electron collecting ecAGIPD ASIC (green) in comparison to the hole collecting AGIPD (red).

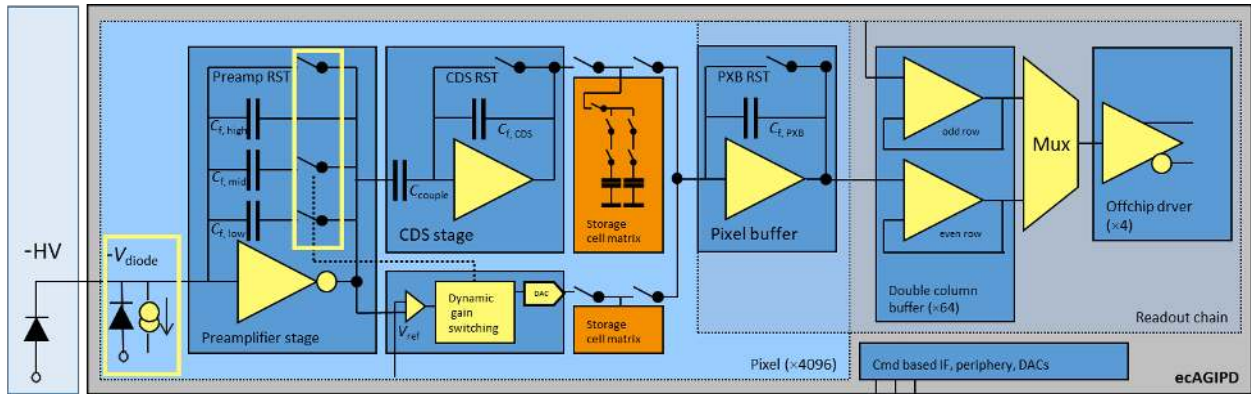


Figure 13: Circuit schematic of the ecAGIPD, the electron collecting version of the AGIPD ASIC. The yellow frames contain the components located in isolated p-wells.

Since the baseline is only minimally higher than an n-MOS' threshold voltage, it requires the protection of the amplifier inputs and calibration stimuli sources to work from a negative potential, which was implemented using the *triple well* option of the GF 130 nm process. These p-wells are biased below substrate potential to allow bias sources, input protection diodes, and n-MOS feedback switches to operate properly even in presence of large input charges. By these changes the performance of the preamplifier core actually improves with respect to the hole collecting version, as the simulation results in fig. 12 predict.

Further changes to the circuit are minor: Besides the obvious reversal of the discriminator's polarity required for gain switching, also the levels encoding high and low gain and the pads of the differential analogue outputs were swapped. This way ecAGIPD will deliver the same signal polarities to the subsequent electronics facilitating the reuse of the existing firmware and calibration algorithms. The block schematic is shown in fig. 13. To evaluate the design AGIPD 0.6, a 16×16 pixels prototype of ecAGIPD, has been manufactured and is currently characterised.

9. Going faster

European XFEL plans to introduce two additional bunch patterns in the 2nd half of the 2020ies [6]. These are foreseen to be

- CW operation at 100 kHz rate
- *Long pulse mode* with 500 ms long bursts of ≤ 200 kHz pulses

and would result in an $\times 3.7$ increase in brilliance, if the pulse parameters are kept²⁰. The largest benefit of the CW mode is the ability exchange (or at least move) samples in-between pulses and this way reduce radiation damage to the sample and enable pulse-by-pulse experiments beyond jet based sample delivery.

The burst frame rate of an integrating detector like AGIPD is in principle only limited by the properties of sensor and preamplifier. For the future CW operation of the European XFEL, readout bandwidth will become a bottleneck. The AGIPD ASIC can cope with CW operation up to a frame rate of ≈ 16 kHz with original performance²¹. At even higher rates (theoretically the ASIC can work at up to 96 kHz when omitting gain readout), the deterioration of the analogue readout signals due to e.g. skin effect²², and reflections²³ will render operation impractical.

As a consequence, in-pixel digitisation becomes a must, while readout bandwidth remains one of the limiting factors. Assuming current technology (FireFly with 28 Gbit/s/link), data rates of about 48 Gbit/s/cm² or 3 Gs/s/cm² at 16 bit/sample can be reached. Fig. 14 shows data rate as a function of pixel size and frame speed under these conditions.

An even more challenging problem for such detectors will be power dissipation, since dynamic gain switching

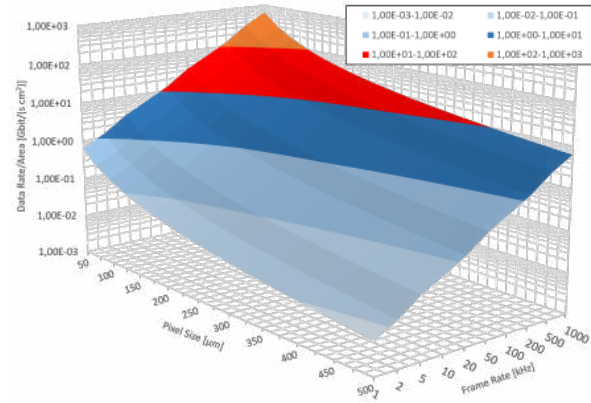


Figure 14: Data rate per area as a function of pixel size and frame speed, assuming a 16 bit quantisation.

requires the the preamplifier to be faster than the sensor's charge collection time. Hence power consumption is inversely proportional to the pixel area and will not relax with the lower frame rate compared to the current 4.5 MHz detectors at the European XFEL. In turn pixels smaller than $\approx 100 \mu\text{m} \times 100 \mu\text{m}$ will result in a power dissipation of $\gtrsim 4 \text{ W cm}^{-1}$ and will be difficult to implement.

10. Summary

A 1 megapixel AGIPD detector system has been installed at the SPB instrument of the European XFEL in August 2017. System fulfils all requirements, esp. in terms of noise, which is below $310 e^-$ (i.e. $\leq 1.2 \text{ keV}$), single photon sensitivity, dynamic range ($\geq 10^4$ photons at 12 keV) and speed (4.5 MHz frame rate). This system has been extensively used in user operation since day one. Remaining shortcomings, like an increasing uncertainty of the gain determination during readout or a limited number of frames per burst are tackled by a new version of the readout ASIC (AGIPD 1.2, taped out in Aug. 2018) and ongoing firmware development.

An identical 1 megapixel system has been delivered to the MID endstation in November 2018 and is currently being commissioned.

AGIPD systems of 4 megapixel for the SFX endsta-

²⁰Other limits, like e.g. heat load of superconducting accelerator parts might prevent an increase in brilliance.

²¹This mode is used during the characterisation and wafer-level testing of single ASICs. The readout systems of the SPB and MID AGIPD cameras require a network and firmware upgrade to implement it.

²²At frequencies of several 10 MHz, signal currents will gradually start to flow only on the surface of a conductor, leading to a rise of impedance and a non-flat frequency response.

²³Reflections, i.e. parts of a signal traveling an electrical transmission line in opposite direction, are generated at any discontinuity of impedance. This is predominantly visible for higher frequencies at e.g. connectors and non-matching termination resistors.

tion and of 1 megapixel for HIBEF are currently under construction. These systems are based on a new readout board, which implements autonomous operation of each detector module from a single power supply and data transmission and communications purely via optical fibres. Since prototypes showed no issues, production of these boards has started. For these boards and for the sensor modules novel in-vacuum cooling concepts are evaluated. The AGIPD 1 megapixel system for HIBEF will be equipped with sensors made from high-Z semiconductor material, for which an electron collecting version of the AGIPD ASIC (ecAGIPD) is being developed. A 16×16 pixel demonstrator has been manufactured and is awaiting evaluation. Since European XFEL will provide different pulse patterns in the 2nd half of the 2020ies, we are studying concepts for an ultra high frame-rate (≥ 100 kHz) imager with in-pixel digitisation, where power consumption and readout bandwidth become limiting factors.

References

- [1] Europran XFEL, <http://www.xfel.eu/en/index.php>
- [2] M. Altairelli et al., [European X-ray Free Electron Laser. Technical Design Report], ISBN 978-3-935702-17-1 (2006), DOI:10.3204/DESY_06-097
- [3] H. Graafsma, "Requirements for and development of 2 dimensional X-ray detectors for the European X-ray Free Electron Laser in Hamburg", *JINST* 4, P12011 (2009), DOI:10.1088/1748-0221/4/12/P12011
- [4] M.C. Veale et al., "Characterisation of the high dynamic range Large Pixel Detector (LPD) and its use at X-ray free electron laser sources", *JINST* 12, P12003 (2017), DOI:10.1088/1748-0221/12/12/P12003
- [5] M. Donato et al., "First functionality tests of a 64×64 pixel DSSC sensor module connected to the complete ladder readout", *JINST* 12, C03025 (2017), DOI:10.1088/1748-0221/12/03/C03025
- [6] R.Brinkmann et al., "Prospects for CW and LP operation of the European XFEL in hard X-ray regime", *Nucl. Instr. Meth. A* 786, 20 (2014), DOI:10.1016/j.nima.2014.09.039
- [7] J. Becker et al., "The Adaptive Gain Integrating Pixel Detector at the European XFEL", *J. Synchrotron Rad.* 26, 74-82 (2019), DOI:10.1107/S1600577518016077
- [8] D. Greiffenberg et al.: "The AGIPD detector for the European XFEL", *JINST* 7, C01103 (2012), DOI:10.1088/1748-0221/7/01/C01103
- [9] B.Henrich et al.: "The adaptive gain integrating pixel detector AGIPD: a detector for the European XFEL", *Nucl. Instr. Meth. A*, 633, Supplement 1 (2010), s11-S14, DOI:10.1016/j.nima.2010.06.107
- [10] A. Allahgholi et al., "The Adaptive Gain Integrating Pixel Detector AGIPD", *JINST* 11, C02066 (2015), DOI:10.1088/1748-0221/11/02/C02066
- [11] J. Schwandt et al, "Design of the AGIPD sensor for the European XFEL", *Nucl. Instr. Meth. A* 731, 252-254 (2013), DOI:10.1016/j.nima.2013.04.031
- [12] U. Trunk et al., "Architecture and design of the AGIPD detector for the European XFEL", 2012 IEEE Nuclear Science Symposium and Medical Imaging Conference Record (NSS/MIC), IEEE, ISBN: 978-1-4673-2028-3, DOI:10.1109/NSSMIC.2012.6551175
- [13] X.Shi et al.: "Challenges in chip design for the AGIPD detector", *Nucl. Instr. Meth. A* 624, 387-391 (2010), DOI:10.1016/j.nima.2010.05.038
- [14] X.Shi et al., "A low noise high dynamic range analogue front-end ASIC for the AGIPD XFEL detector", *Proc. 19th IEEE International Conference on Electronics, Circuits, and Systems*, ISBN 978-1-4673-1261-5, 933 (2012). DOI:10.1109/ICECS.2012.6463508
- [15] D.Mezza et al., "Characterization of AGIPD 1.0: the full scale chip", *Nucl. Instr. Meth. A*, 838, 39 (2016). DOI:10.1016/j.nima.2016.09.007

- [16] W. Buttler et al., "Noise filtering for readout electronics", *Nucl. Instr. Meth. A* 288, 187 (1990), DOI:10.1016/0168-9002(90)90484-N
- [17] J. Becker et al.: "The single photon sensitivity of the Adaptive Gain Integrating Pixel Detector", *Nucl. Instr. Meth. A*, 694, 8290, DOI:10.1016/j.nima.2012.08.008 (2012)
- [18] J. Becker et al.: "Simulation and Experimental Study of Plasma Effects in Planar Silicon Sensors", *Nucl. Instr. Meth. A*, 624, 716-727, DOI:10.1016/j.nima.2010.10.010 (2010)
- [19] DESY Maxwell HPC Cluster, http://it.desy.de/services/computing_infrastructure/maxwell_hpc_cluster_including_gpu_computing/index_eng.html
- [20] I. A. Vartanyants et al.: "Intensity interferometry of single x-ray pulses from a synchrotron storage ring", *Phys. Rev. Lett.* 113, 064801, /1-4 (2014), DOI:/10.1103/PhysRevLett.113.064801
- [21] M. O. Wiedorn et al.: "Megahertz serial crystallography" *Nat Communications* 9(1), 4025 (2018), DOI:10.1038/s41467-018-06156-7
- [22] D. Mezza et al., "New calibration circuitry and concept for AGIPD," *JINST* 11, C11019 (2016), DOI:10.1088/1748-0221/11/11/C11019.
- [23] Samtec FireFly, <http://www.samtec.com/en/optics/optical-cable/mid-board/firefly>
- [24] A. Owens, A. Peacock: "Compound semiconductor radiation detectors", *Nucl. Instr. Meth. A*, 531, 18-37 (2004), DOI: 10.1016/j.nima.2004.05.071
- [25] M.C. Veale et al.: "Cadmium zinc telluride pixel detectors for high-intensity x-ray imaging at free electron lasers", *J. Physics D*, 52 085106 (2019), DOI:/10.1088/1361-6463/aaf556
- [26] M. Strassburg, Ch. Schroeter and P. Hackenschmied: "CdTe/CZT under high flux irradiation", *JINST* 6, C01055 (2011), DOI:10.1088/1748-0221/6/01/C01055
- [27] J. Becker et al.: "Characterization of CdTe sensors with Schottky contacts coupled to charge-integrating pixel array detectors for X-ray science", *JINST* 11, P12013 (2016), DOI:10.1088/1748-0221/11/12/P12013
- [28] J. Becker et al.: "Characterization of chromium compensated GaAs as an X-ray sensor material for charge-integrating pixel array detectors", *JINST* 13, P01007 (2018), DOI:/10.1088/1748-0221/13/01/P01007
- [29] M.C. Veale et al.: "Investigating the suitability of GaAs:Cr material for high flux X-ray imaging", *JINST* 9, C12047 (2014), DOI:10.1088/1748-0221/9/12/C12047
- [30] J. Zhang, R. Klanner et al.: "Study of X-ray radiation damage in the AGIPD sensor for the European XFEL", *JINST* 9, C05022 (2014), DOI:10.1088/1748-0221/9/05/C05022