

Mental disorder and PTSD in Syria during wartime: a nationwide crisis

Ameer Kakaje (✉ ameer.kakaje@hotmail.com)

Damascus University Faculty of Medicine <https://orcid.org/0000-0002-3949-6109>

Ragheed Al Zohbi

University of Aleppo Faculty of Medicine

Osama Hosam Aldeen

Damascus University Faculty of Medicine

Leen Makki

McGill University

Ayham Alyousbashi

Damascus University Faculty of Medicine

Bahaa Aldin Alhaffar


Damascus University

Research article

Keywords: Conflict, global health, K10, mental distress, PTSD, public health, refugees, social support, Syria, war

Posted Date: December 15th, 2020

DOI: <https://doi.org/10.21203/rs.3.rs-19902/v4>

License:  This work is licensed under a Creative Commons Attribution 4.0 International License. [Read Full License](#)

Version of Record: A version of this preprint was published on January 2nd, 2021. See the published version at <https://doi.org/10.1186/s12888-020-03002-3>.

Abstract

Background: Syria has experienced war since 2011, leaving over 80% under the poverty line and millions being displaced. War and its retaliations have significantly impacted the mental health of Syrians. This study evaluates the post-traumatic stress disorder (PTSD), and the severity of the mental distress caused by war and other factors such as low social support. This study also evaluates other variables and compares the findings with multiple studies of Syria and refugees.

Methods: This is a cross-sectional study that included people who lived in Syria from different governorates. Online surveys were distributed into multiple online groups and included Kessler 10 (K10) questionnaire, the Screen for Posttraumatic Stress Symptoms (SPTSS) tool, the Multidimensional Scale of Perceived Social Support, and demographic and war-related questionnaires.

Results: Our study included 1951 participants, of which, 527 (27.0%) were males and 1538 (78.8%) aged (19-25) years. Among participants, 44% had likely severe mental disorder, 27% had both likely severe mental disorder and full PTSD symptoms, 36.9% had full PTSD symptoms, and only 10.8% had neither positive PTSD symptoms nor mental disorder on the K10 scale. Around 23% had low overall support. Half of the responders were internally displaced, and 27.6% were forced to change places of living three times or more due to war. Around 86.6% of the responders believed that the crisis was the main reason for their mental distress. Those with high SPTSS and K10 scores were found to take more days off from work or school due to negative feelings and having somatic symptoms. Moreover, the number of times changing places of living due to war, educational level, and being distressed by war noise were the most important factors for more severe PTSD and mental distress. No differences in PTSD and mental disorder prevalence were noted in governorates and type of job. A strong correlation ($r=0.623$) was found between SPTSS and K10 scores.

Conclusion: The conflict in Syria has left the population at a great risk for mental distress which was more severe compared to Syrian refugees elsewhere. Many measures with an emphasis on mental health are needed to aid the people against a long-term avoidable suffering.

Background

Warfare has acute and chronic effects on the community and is considered one of the most devastating events that can be experienced. The indirect effects of warfare can also be as disastrous as can continue for years after the settling of the conflict. The aftermath of war is challenging, emanating from food and resource shortage, displacement, and disease outbreak (1). Since the beginning of the Syrian conflict in 2011, many people have been wounded, 511,000 have died (2), more than 5.6 million have been externally displaced (3), and over 6.2 million have been internally displaced (4). In 2014, it was estimated that 82.5% of Syrians lived below the poverty line. Syria's deteriorating economy presents a challenge in terms of resource allocation to the health sector as only 1.5 hospital beds and 1.22 physicians were available per 1000 people, making mental medical conditions almost impossible to treat (5). The health sector and economic situation are much worse at the time of this study.

The damage to the medical infrastructure and the loss of medical staff have greatly affected the health system in Syria. Mental health has faced even greater challenges during the conflict as it has been neglected for decades and very few psychologists and psychiatrists exist in Syria. The education sector has also been significantly injured after many facilities being demolished by the war. With the destruction of the Syrian social structure, most children had to grow up in a war-burdened environment which scarred their normal development (6). These disturbances and loss of both social and emotional support have led to patterns of severe mental trauma (7). This has left many people paralysed and incapable of facing everyday challenges, mainly due to years if not decades of severe mental distress and the high financial burdens which have been threatening several generations. Furthermore, the post-traumatic effects will have a longer-lasting impact which may continue for several years after the conflict resolves (8-10).

Many Syrians have fled the country and sought asylum in different countries. Although most of them lived in a relatively much safer environment after facing grave dangers to reach their destination, they suffered mentally as they were far from their homeland, their family members, friends, and usual work environment, and might be experiencing bad living conditions such as living in camps. Many of the people who left the conflict zone have also developed mental disorders that might be different from those but from those who have stayed (11). Furthermore, several studies indicate that mental distress is higher in conflict areas. This study evaluates mental disorders, post-traumatic stress disorder (PTSD), and the amount of social support among Syrians who remained in Syria and their relevant factors. This study used self-reported questionnaires in light of lack of funding that medical research in Syria is facing and unavailable resources for proper diagnosis (12-16). This study also assessed for other variables and compared them with other studies for a better evaluation of the mental disorders among Syrians and refugees.

Methods

• 1) Sampling

This is a cross-sectional study conducted in Syria from 3/3/2019 to 24/3/2019. Online surveys in Arabic were distributed to participants from several Syrian governorates. Only participants who lived in Syria at the time of the survey and answered the demographic in addition to the K10 questions were enrolled. The questionnaires were posted online twice each day at 10 AM and 10 PM in social media groups with different topics such as educational, cuisine, market, entertainment, cultural, musical etc. Any participant who spoke Arabic, lived in Syria at the time of the study, and answered the required questions was included.

• 2) Consent and approval for study

The informed consent was taken online for using and publishing the data before carrying on with the survey. Confidentiality was assured and no identity-revealing questions were asked. This method was approved by Damascus University.

Our study protocol and ethical aspects were reviewed and approved by Damascus University deanship in Damascus, Syria.

- **3) Questionnaires**

- *Socioeconomic status (SES)*

There is no suitable validated SES measurement to use in the Syrian population as we cannot ask directly about the monthly salary which is highly inappropriate in Syria and due to the huge differences between the normal wage in Syria and other countries. Therefore, SES was assessed through three criteria; 1) the level of education, 2) the profession of the participant or that of the working family member/partner, 3) and the monthly income adequacy of the individual who was the main source of income in the household. SES was then divided into four different categories: lower, upper-lower, middle, and upper.

- *Screening for mental disorder*

Kessler 10 is typically used in screening surveys to measure mental distress (17-19). An Arabic version of the K10 + LM questionnaires was used which was validated in Arabic (17, 18). It is a self-reported measure that is used to assess anxiety and depression symptoms over the previous four weeks. It contains ten questions with scores ranging from 10 to 50. Subjects who score under 20 are likely to be well, those who score 20-24 could have a mild mental disorder, those who score 25-29 have moderate mental disorder, and finally those who score 30 and above have a severe mental disorder. Each question has five possible responses with scores ranging from 1 to 5.

- *Social support*

An Arabic version of the Multidimensional Scale of Perceived Social Support (MSPSS) was used to measure the social support that the individual receives from their social network, including friends, family, and the significant other (20, 21). The measure contained 12 questions with four questions for each source. Support received was then divided into three categories: low support with a mean score of 1 to 2.9, moderate support with a mean score of 3 to 5, and finally high support with a mean score of 5.1 to 7. The scores and measures were validated in Arabic (21). The questionnaire and its translation are available (22).

- *PTSD*

The Screen for Posttraumatic Stress Symptoms (SPTSS) tool was used; a self-reporting screening method for PTSD that is very concise and suitable as it is easy to understand and does not focus on specific traumatic events. SPTSS is not meant to be a definitive diagnostic tool for PTSD. It measures three PTSD clusters over the previous 4 weeks; avoidance with 7 items, hyper-hyper-arousal with 5 items, and re-experience with 5 items. Each question has 5 potential responses, ranging from "Not at all" to "More than once every day", with scores ranging from 0 to 4. However, when calculating the final score for each cluster, the first two scores represent 0 and the other three scores represent 1. Scoring 3 or more on avoidance cluster, 2 or more on re-experience, and 1 or more on excessive hyper-arousal is an indication of PTSD for that specific cluster. The scores and measures are validated in Arabic (22, 23). This scale, however, is based on the diagnostic and statistical manual of mental disorders (DSM) IV. These three clusters are close to what is used in the International Classification of Disease 11 (ICD-11) criteria although using DSM IV criteria usually identifies cases with less severe trauma exposure (24).

- *Other Questions*

Subjects were asked basic demographic questions such as gender, age, educational level, governorate of current living, and whether they had consanguineous parents. Subjects were also asked a few questions, both directly and indirectly about war, including changing place of living due to war, losing someone close, and being distressed from war noises. Finally, subjects were asked if they had any chronic medical condition.

This study defined third-degree consanguineous parents as having parents who were first cousins, and fourth-degree consanguineous parents as having parents who were second cousins, or second cousins once removed who is either a child of one's second cousin, or one's parent's second cousin.

- **4) Data Process:**

Data were processed using IBM SPSS software version 26 for Windows (SPSS Inc, IL, USA). Chi-square was used with nominal variables such as in (Table 3) while one-way analysis of variance (ANOVA), and independent t-tests were performed to determine statistical significance when having a numeric variable with a nominal one such as in (Table 2 and Table 4). Pearson correlation was also used when having two numeric variables.

Through the same software, odds ratios (ORs) and the 95% confidence intervals for the groups were calculated using the Mantel–Haenszel test. Values of less than 0.05 for the two-tailed P values were considered statistically significant. Bonferroni correction was used to reduce type 1 error when comparing multiple variables in Table 2 and Table 3. It is calculated by $P = \alpha/m$ where α in our study is 0.05 and m is the number of hypotheses.

Results

Overall, 2173 filled in the survey. However, 198 were excluded as they did not answer all the questions, or their replies were invalid. Another 24 participants refused to be enrolled despite their initial consent when initiating the survey. The study included 1951 responders with 527 (27.0%) being males, and 1538 (78.8%) participants being within the age range of (19-25) years.

Among responders, 19.2% (CI 95%: 17.5% - 21%) were likely to be well, 19.5% (CI 95%: 17.8% - 21.3%) had a mild mental disorder, 16% (CI 95%: 14.9% - 18.1%) had a moderate mental disorder, and 44.7% (CI 95%: 42.6% - 47.0%) had a severe mental disorder according to K10 scale. Other characteristics of the subjects are demonstrated in (Table 1).

According to SPTSS questionnaire, 53.3% (CI 95%: 51.2% - 55.6%) met the criteria for having symptoms of avoidance, 64.4 (CI 95%: 62.4% - 66.5%) for hyper-arousal, 58.9% (CI 95%: 56.9% - 61.2%) for re-experience, and 36.9% (CI 95%: 35.0% - 39.1%) for full PTSD symptoms.

K10 results:

According to Table 2, there were significantly higher K10 scores in participants who changed places of living multiple times due to war, females, participants with low SES, low educational levels, younger age groups, and participants who were distressed from war noise. When regressing the previous significant variables on K10 scores by using forward linear regression, they were all significant ($P < 0.05$). Regression model is demonstrated in (Table 5). Other variables and their correlation with K10 scores are demonstrated in (Table 2).

When using Pearson correlation, positive correlations ($P < 0.001$) were found between K10 scores and higher numbers of days being unable to work, study, or manage daily activities because of the negative feelings ($r = 0.110$), more frequent visits to a health professional because of the negative feelings ($r = 0.110$), and more frequent physical problems being attributed to the negative feelings ($r = 0.180$). K10 scores were not correlated with the type of work ($P = 0.357$) and are demonstrated in (Figure 2).

MSPSS results:

When comparing the governorate of current living and MSPSS, we did not find a statistically significant difference $P = 0.662$. When using one-way ANOVA, high overall support was associated with fewer times of reporting physical problems being attributed to the negative feelings ($P = 0.040$). However, P-value was higher than 0.05 with other LM questions.

According to table 2, significantly higher MSPSS scores were found in engaged participants, and with higher SES groups ($P < 0.001$). When regressing the previous two variables from Table 2 on MSPSS scores by using forward linear regression, only SES was found significant ($P < 0.001$) with an R^2 of 2.3%. Regression model is demonstrated in (Table 5).

Comparing SPTSS clusters with each variable is demonstrated in (Table 3). SPTSS total scores were not correlated with the type of work ($P = 0.357$) and are demonstrated in (Figure 2). When comparing the governorate of current living with having PTSD, no statistically significant difference was observed $P = 0.681$. However, disturbance of K10 scores among governorates is demonstrated in (Figure 1). The mean SPTSS score was higher by at least 4.5 points when having one or more chronic medical conditions compared to not having any ($P < 0.001$, $F = 12.6$).

We used forward linear regression on avoidance scores with the statistically significant variables of avoidance, except for the variables with an asterisk in Table 3. This showed the number of times changing places of living, and education were statistically significant ($P < 0.05$). When using the same method on hyper-arousal, distress from war noise, number of times changing places of living, and education were statistically significant ($P < 0.05$). When using the same method on re-experience, distress from war noise, losing someone due to war, educational level were statistically significant ($P < 0.05$). All regression models are demonstrated in (Table 5).

Comparisons between K10, SPTSS, and MSPSS results:

When using independent t-test, the mean score of K10 was 32.9 (± 23.9) in participants with avoidance symptoms, 23.9 (± 8.4) in participants without avoidance symptoms, and $t = -22.69$ ($P < 0.001$). The mean score of K10 was 32.1 (± 9.2) in participants with hyper-arousal symptoms, 22.6 (± 7.9) in participants without hyper-arousal symptoms, and $t = -22.76$ ($P < 0.001$). The mean score of K10 was 32.3 (± 9.2) among participants with re-experience symptoms, and 23.5 (± 8.2) in participants without re-experience symptoms, and $t = -21.78$ ($P > 0.001$).

Using one-way ANOVA, MSPSS scores were significantly associated with worse K10 results and SPTSS clusters which are demonstrated in (Table 4). When using Pearson correlation, higher K10 and SPTSS symptoms scores were significantly associated with lower family, friends, and significant other support. Family support score was significantly ($P < 0.001$) correlated with K10 score ($r = -0.195$), avoidance score ($r = -0.236$), arousal score ($r = -0.195$), and re-experience score ($r = -0.192$). Friend support score was also significantly ($P < 0.001$) correlated with K10 score ($r = -0.171$), avoidance score ($r = -0.257$), arousal score ($r = -0.214$), and re-experience score ($r = -0.192$). Finally, significant other support was significantly ($P < 0.001$) correlated with K10 score ($r = -0.160$), avoidance score ($r = -0.233$), arousal score ($r = -0.177$), and re-experience score ($r = -0.157$).

Other results:

When using one-way ANOVA and independent t-test, more days were declared being unable to work, study, or manage daily life because of the negative feelings among subjects with more SPTSS symptoms ($P=0.061$), avoidance symptoms ($P=0.0190$), hyper-arousal symptoms ($P=0.034$), and re-experience symptoms ($P=0.043$). Fewer subjects declared they could work but had to cut down on what they did which was statistically insignificant ($P>0.05$). Furthermore, more frequent visits to health professionals because of what was felt was associated with total PTSD symptoms ($P=0.063$), avoidance symptoms ($P>0.05$), hyper-arousal symptoms ($P=0.022$), and re-experience symptoms ($P=0.022$). More subjects also declared that having physical health problems being the main cause of the negative feelings was associated with more SPTSS symptoms ($P<0.0001$), avoidance symptoms ($P=0.003$), hyper-arousal symptoms ($P<0.0001$), and re-experience symptoms ($P<0.0001$).

Discussion

Distress, depression, and mental disorder:

Our study showed that 80.7% of the studied sample scored above 20 in the K10 test, and around 60% of the population reported symptoms consistent with moderate to severe mental disorder. Changing places of living multiple times due to war, being females, having a low SES, low educational levels, younger age groups, and being distressed from war noise were associated with higher K10 scores. High K10 scores were also correlated with more frequent visits to the doctor, more days off work, and more physical problems. Over 80% of the participants were younger than 25 years of age. We did not find significant differences when comparing mental disorders among governorates and different types of jobs.

Among a typical population, 13% scored 20 or above in the K10 questionnaire. In primary care, around 25% of patients in primary care scored 20 or over in high-income countries (17, 18). These numbers are much higher in low-income countries; in Iraq, around 60% of Syrian refugees had probable depression (25). Another study found that 56% of the Syrian refugees at Alzatory Camp in Jordan suffered from mental distress, and 46% believed they needed mental support (26). At least 49.7% of the refugees in Germany were screened positive for a mental disorder, with 21.7% having depression and 10.3% having major depression (27). Whilst depression was the most common mental disorder among Syrian refugees in Sweden with the prevalence being 40.2% (28), a study on Syrian school students found that the depression rate was 32% in 2018 (29).

Several factors increase the risk of developing mental distress. It is known that the most important period for the development of the mental balance is during the adolescence. Unfortunately according to some studies, around 20% of young people in the world suffer from mental problems (30). Many studies revealed that mental disorders prevalence is often two times higher among females than males (28, 31). Male Syrian refugees also reported facing more traumatic events (25).

PTSD and traumatic exposure:

In this study, 36.9% of the participants had full PTSD symptoms, 60.8% had two or more positive PTSD symptoms, and only 21% did not have any PTSD symptom. Our study showed that 49.9% had to change places of living due to war, with 27.6% having to change their place of living three times or more. Moreover, 64.3% lost someone due to war, and 85.4% had a relative or a close friend who was endangered by the war. The number of times changing places of living due to war, educational level, and distress from war noise contributed the most to the high PTSD scores overall. We did not find significant differences in PTSD prevalence among governorates and different types of jobs.

Around 60% of Syrian students in Syria have PTSD and/or problematic anger (32). One study in 2019 found that 61.4% of Syrian refugees met the DSM-5 symptom criteria for probable PTSD with a significant difference between males and females (25). However, another study on Syrian refugees in Lebanon found that 27.2% had a PTSD point prevalence and 35.4% had a lifetime prevalence (33). In Turkey, it was found that the prevalence of PTSD was 33.5% among Syrian refugees using DSM-IV-TR criteria (34). Moreover, 34.9% of refugees in Germany had PTSD (27) while it reached 29.9% in Sweden (28), and 35.1% in students in Syria (29).

Approximately 70% of people experience at least one traumatic incident in their life (35). This might cause persistent avoidance and re-experiencing of the event in addition to other symptoms that reveal an emotional stimulation or a stress response (36, 37). Around 10-40% of trauma survivors will develop PTSD (38) which is associated with a decreased quality of life (39). Prevalence rates of PTSD are widely varied across studies due to differences in measures and periods in which the studies were conducted. Moreover, 59.1% responded positively when screening for trauma exposure in Syria while refugees from Aleppo had higher PTSD prevalence than from Homs (33). Another study conducted in Syria on school students showed that 50.2% of participants were internally displaced (29). Another study on Syrian refugees in Iraq showed that 98.5% of refugees had encountered at least one traumatic event, and 86.3% of them encountered at least three (25).

Other variables also took part such as age, gender, illness history, level of social support, and cultural background (40). Besides, a study on Syrian refugees in Turkey found that experiencing two or more traumatic events significantly increased the risk of PTSD, and the ratio of females having PTSD was four times more than males (34). Numerous studies about gender differences showed that males are less likely to develop PTSD after traumatic events, and therefore the prevalence of PTSD among women will be higher. In contrast, a study in Lebanon showed no significant differences in PTSD and depression rates between male and female university students who faced war-related trauma (41).

Age is considered a significant risk factor for developing PTSD; a meta-analysis of 29 studies on trauma-exposed adults revealed that exposure to a traumatic event at a younger age was an important risk factor for PTSD (42).

Social support:

Although only 23.2% of our sample had a low total support, the high prevalence of PTSD, and mental disorders suggest other factors being involved besides low support levels as ($r < 0.3$). SES was the most contributing factor to social support.

The literature indicates that social support was a preventive factor for the development of PTSD for men and women. Furthermore, the incidence of post-traumatic stress increased in those with a low social support. For many who have experienced trauma in their lives, social support was a preventive factor for the development of PTSD (43). This confirms our finding of the negative association between MSPSS scores, and SPTSS and K10 scores ($P < 0.0001$).

However, after a long period of exposure to trauma, the impact of social support as a protective factor may be mitigated (44). A study at Alzatary Camp in Jordan found that 66.7% of refugees staying at the camp reported a great need for mental support (26).

Outcomes of the psychological burden:

Being fearful, easily angered, nervous, having difficulty sleeping or staying asleep, absence of hope for the future, and spells of terror or panic were some of the characteristics that the Syrian refugees experienced at Alzatary Camp in Jordan (26). Similarly, 31.8% of refugees in Sweden, and 29.5% of Syrian students had anxiety (28, 29). Other studies in Syria found that dental and genital health were associated with PTSD and mental disorders (45-47). Another study found that around 50% of the population had allergic rhinitis which could be from the direct or indirect effects of war or the unique environment (48). Another study found a high prevalence of laryngopharyngeal reflux which is also related to war variables (49). Smoking is also common among the Syrian population, mainly social shisha smoking which could be to get away from the daily stress. Shisha smoking is mainly common among university students who consist most of our study (50).

Moreover, war has affected university students (51), and prevented research from being properly conducted due to a shortage of resources (52). Many studies lacked proper funding which ultimately generated limited data. There are many crucial investigations not conducted in most studies in Syria, and delayed treatment can occur due to the financial hurdles which can dramatically affect patients' care (12-16). This reflects some of the negative outcomes that Syrians have endured, especially in those who were mostly affected by the war.

The stigma of mental health in Syria is very common, and only a few practicing psychiatrists and psychotherapists exist. As social support was only weakly but significantly correlated with lower K10 and SPTSS scores ($r < 0.3$ with $P < 0.001$), other measurements are required to boost mental health in the society. National-wide programs are needed to increase awareness, and humanitarian assistance is required to benefit from international experts in mental health. Financial assistance is also needed as the deteriorating financial situation is a strong contributing factor to the suffering.

Limitations:

Most online surveys in Syria tend to include the young population and females more than males as the young population tends to be members in online groups more often. In contrast, older generations exist mainly in family's and close friends' groups, and they are disinterested in filling in surveys that are not directly sent from a person they know, or they simply do not know how to fill them in. This pattern is seen in multiple online studies from Syria. This might have affected the results as the young might react differently compared to the elder. Self-reported symptoms also tend to overestimate the true prevalence of mental symptoms. Besides, the nature of the method – self-reported questionnaires – solicits responses which may vary depending on the participant's feelings at the time.

Although K10 is a good screening method to detect recent anxiety and depressive symptoms, it is not an appropriate alternative for medical consultation. However, after clinical diagnosis, K10 can be used for assessment as scores that remain above 24 are indicative to the needs for a referral to a specialist (17, 18). Symptoms associated with PTSD can also be seen in the normal phase of dealing with stress which the Syrian population has been experiencing since 2011, with no periods that allowed for mental healing or stability.

Furthermore, mental illness rates can be associated with factors that have not been addressed in our study. For example, studies among war-affected displaced populations showed that the number of traumatic events was associated with increased mental illness rates as previously discussed; we could not, however, determine the exact event(s) that the population had faced. Moreover, geographical characteristics appear to influence the psychological wellbeing of displaced populations. Most studies showed that severe mental disorders were more common in cities compared to rural areas (25, 53). However, one study on Syrian refugees found this difference was only with PTSD, not with depression symptoms (25). Our study could not determine the exact place of living, whether it was urban or rural. We could only determine the governorate of origin since responders might have been displaced several times which made it difficult to determine this factor.

This study did not consider the mental background of participants, which could have aggravated the symptoms of PTSD or biased the questionnaire. This study was online which made it difficult to determine the population at risk. Moreover, responders who had an internet connection and were willing to do the questionnaires are probably in a better mental condition than those who are truly severely affected, and do not have internet connection or the will to do the survey. Finally, most of the responders were university students with potentially higher SES than the normal population. For all the previous reasons, this study might have underestimated the true prevalence of distress amongst the general population.

SES could not be accurately determined since asking about the salary is inappropriate in the Syrian culture. There is a huge difference in living costs in Syria, where people can live of a lower income compared to other countries in the region. SPTSS is based on DSM-IV, not V. However, it can resemble ICD-11.

Conclusion

The Syrian conflict has caused severe mental distress in the Syrian society. Efforts and interventions to improve the psychological wellbeing of the Syrian population are needed to ensure the people are prepared for the reconstruction of their country when the situation improves. The results of this study reflect the underlying disaster that made people severely mentally impaired. The social support relatively had a weak effect, meaning that resources should be re-allocated to other aspects of care. Syrian people have serious concerns about financial and psychiatric aspects of their lives and require various measures to ameliorate their situation. These results also emphasises on the importance of security either economically or in terms of personal safety which are more important in the long term than support from family, friends, and the significant other as higher mental distress is seen in those who remained in Syria compared to refugees in camps.

This study suggests that internally displaced people, and even those who were not displaced in the conflict, experienced more severe mental disorder than the Syrian refugees in most countries. The number of times changing places of living due to war and being distressed from war noise have contributed the most to the high K10 and SPTSS scores. More than 60% of the population suffered from PTSD and severe mental disorders. Having a high educational background was associated with less severe mental disorders and PTSD. Moreover, a higher number of times changing places of living due to war, a lower educational level, and being distressed from war noise were associated the most with sever PTSD and mental distress. No significant differences in mental disorders, or PTSD were noted among participants from different governorates or with different job types. Many other variables have contributed to these findings altogether which indicate the need for addressing multiple issues. Females and young participants suffered more on the psychiatric aspect.

Abbreviations

ANOVA	Analysis of variance
CI	Confidence Interval
DSM	Diagnostic and statistical manual of mental disorders
ICD	International Classification of Disease
K10	Kessler
MSPSS	Multidimensional Scale of Perceived Social Support
OR	Odds ratios
PTSD	post-traumatic stress disorder
SES	Socioeconomic status
SPSS	Statistical Package for the Social Sciences
SPTSS	Screen for Posttraumatic Stress Symptoms

Declarations

- **Ethics approval and consent to participate:**

Online informed consent was taken before proceeding with the survey for participating in the research, and for using and publishing the data. We assured to maintain confidentiality and asked no questions that might reveal the person's identity. No subjects were under age of 14. For subjects under the age of 18 years, another online informed consent was taken from the guardian as this method was agreed in the study protocol.

Our study protocol and ethical aspects were reviewed and approved by Damascus University deanship, Damascus, Syria.

- **Consent for publication:**

N/A

- **Availability of data and materials:**

The data can be made available upon reasonable request.

- **Competing interests:**

We have no conflict of interest to declare.

- **Funding:**

We received no funding in any form.

- **Authors' contributions:**

All authors have read and approved the manuscript.

- **AK:** Conceptualization; Data curation; Formal analysis; Investigation; Methodology; Project administration; Supervision; Resources; Validation; original draft; Writing - review & editing.
- **RAZ:** original draft; Investigation.
- **OHA:** original draft.
- **LM:** Writing - review & editing.
- **AA:** Formal analysis. Software.
- **BAA:** Data curation, Methodology.

- **Acknowledgements:**

We sincerely appreciate the valuable contributions made by Dr Ayham Ghareeb and Dr Yousef Mahmoud and acknowledge their kind collaboration in making this research possible, and facilitating its conduction, and distribution of the survey

We also appreciate the valuable contributions made by S. Hakeem for medical media for their aid in largely distributing the surveys among people.

References

1. de Ville de Goyet C, Marti RZ, Osorio C. Natural Disaster Mitigation and Relief. In: nd, Jamison DT, Breman JG, Measham AR, Alleyne G, Claeson M, et al., editors. *Disease Control Priorities in Developing Countries*. Washington (DC)2006.
2. Syria, Events of 2018: Reuters; [Available from: <https://www.hrw.org/world-report/2019/country-chapters/syria>.
3. Syria emergency: UNHCR, the UN Refugee Agency [updated 19 April 2018. Available from: <https://www.unhcr.org/syria-emergency.html>.
4. Internally Displaced People: UNHCR, The UN Refugee Agency; [Available from: <https://www.unhcr.org/sy/internally-displaced-people>.
5. Agency. CgCI. MIDDLE EAST :: SYRIA [updated FEBRUARY 20, 2020. Available from: <https://www.cia.gov/library/publications/resources/the-world-factbook/geos/sy.html>.
6. Taleb ZB, Bahelah R, Fouad FM, Coutts A, Wilcox M, Maziak W. Syria: health in a country undergoing tragic transition. *International Journal of Public Health*. 2014;60(S1):63-72.
7. Cloitre M, Garvert DW, Brewin CR, Bryant RA, Maercker A. Evidence for proposed ICD-11 PTSD and complex PTSD: a latent profile analysis. *European Journal of Psychotraumatology*. 2013;4(1).
8. Carlsson JM, Olsen DR, Mortensen EL, Kastrup M. Mental Health and Health-Related Quality of Life. *The Journal of Nervous and Mental Disease*. 2006;194(10):725-31.
9. Lie B. A 3-year follow-up study of psychosocial functioning and general symptoms in settled refugees. *Acta Psychiatrica Scandinavica*. 2002;106(6):415-25.
10. Roth G, Ekblad S, Ågren H. A longitudinal study of PTSD in a sample of adult mass-evacuated Kosovars, some of whom returned to their home country. *European Psychiatry*. 2006;21(3):152-9.
11. Miller KE, Rasmussen A. War experiences, daily stressors and mental health five years on. *Intervention*. 2014;12:33-42.
12. Kakaje A, Alhalabi MM, Ghareeb A, Karam B, Mansour B, Zahra B, et al. Rates and trends of childhood acute lymphoblastic leukaemia: an epidemiology study. *Scientific Reports*. 2020;10(1).
13. Ghareeb A, Kakaje A, Ghareeb A, Nahas MA. An enormous arteriovenous malformation presenting in a child in sacro-gluteal region and managed successfully by recurrent embolisation and surgery. *International journal of surgery case reports*. 2020;71:244-9.
14. Kakaje A, Mujahed R, Hamdan O, Hakim J. A large epithelioid angiomyolipoma of the kidney in a very young child with idiopathic chylothorax: A diagnostic dilemma. *Urology case reports*. 2020;28:101035.
15. Kakaje A, Awad R. Behcet's disease presenting with primary hypothyroidism, adrenal insufficiency, and celiac disease: A case report. *Clinical Case Reports*. 2020.
16. Saadi TA, Abbas F, Turk T, Alkhatib M, Hanafi I, Alahdab F. Medical research in war-torn Syria: medical students' perspective. *The Lancet*. 2018;391(10139):2497-8.
17. Andrews G, Slade T. Interpreting scores on the Kessler Psychological Distress Scale (K10). *Australian and New Zealand Journal of Public Health*. 2001;25(6):494-7.
18. Kessler RC, Andrews G, Colpe LJ, Hiripi E, Mroczek DK, Normand SLT, et al. Short screening scales to monitor population prevalences and trends in non-specific psychological distress. *Psychological Medicine*. 2002;32(6):959-76.

19. Palazón-Bru A, Sampasa-Kanyinga H, Zamorski MA, Colman I. The psychometric properties of the 10-item Kessler Psychological Distress Scale (K10) in Canadian military personnel. *Plos One*. 2018;13(4).
20. Zimet G. Multidimensional Scale of Perceived Social Support (MSPSS) - Scale Items and Scoring Information. 2016.
21. R M, Kazarian S. Validation of the Arabic translation of the Multidimensional Scale of Social Support (Arabic MSPSS) in a Lebanese community sample. *Arab Journal of Psychiatry*. 2012;23:159-68.
22. Aljurany KAH. Personality characteristics, trauma and symptoms of PTSD: a population study in Iraq: Heriot-Watt University; 2013.
23. Carlson EB. Psychometric Study of a Brief Screen for PTSD: Assessing the Impact of Multiple Traumatic Events. *Assessment*. 2016;8(4):431-41.
24. Haravuori H, Kiviruusu O, Suomalainen L, Marttunen M. An evaluation of ICD-11 posttraumatic stress disorder criteria in two samples of adolescents and young adults exposed to mass shootings: factor analysis and comparisons to ICD-10 and DSM-IV. *BMC Psychiatry*. 2016;16(1).
25. Mahmood HN, Ibrahim H, Goessmann K, Ismail AA, Neuner F. Post-traumatic stress disorder and depression among Syrian refugees residing in the Kurdistan region of Iraq. *Conflict and Health*. 2019;13(1).
26. Basheti IA QEaMR. Psychological Impact of Life as Refugees: A Pilot Study on a Syrian Camp in Jordan. *Tropical Journal of Pharmaceutical Research*.
27. Nesterko Y, Jäckle D, Friedrich M, Holzapfel L, Glaesmer H. Prevalence of post-traumatic stress disorder, depression and somatisation in recently arrived refugees in Germany: an epidemiological study. *Epidemiology and Psychiatric Sciences*. 2019;29.
28. Tinghög P, Malm A, Arwidson C, Sigvardsdotter E, Lundin A, Saboonchi F. Prevalence of mental ill health, traumas and postmigration stress among refugees from Syria resettled in Sweden after 2011: a population-based survey. *BMJ Open*. 2017;7(12).
29. Perkins JD, Ajeeb M, Fadel L, Saleh G. Mental health in Syrian children with a focus on post-traumatic stress: a cross-sectional study from Syrian schools. *Social Psychiatry and Psychiatric Epidemiology*. 2018;53(11):1231-9.
30. Barry MM, Clarke AM, Jenkins R, Patel V. A systematic review of the effectiveness of mental health promotion interventions for young people in low and middle income countries. *BMC Public Health*. 2013;13(1).
31. Acarturk C, Cetinkaya M, Senay I, Gulen B, Aker T, Hinton D. Prevalence and Predictors of Posttraumatic Stress and Depression Symptoms Among Syrian Refugees in a Refugee Camp. *The Journal of Nervous and Mental Disease*. 2018;206(1):40-5.
32. Kakaje A, Al Zohbi R, Alyousbashi A, Abdelwahed RNK, Hosam Aldeen O, Alhalabi MM, et al. Post-traumatic stress disorder (PTSD), anger and mental health of school students in Syria after nine years of conflict: a large-scale school-based study. *Psychological Medicine*. 2020:1-11.
33. Kazour F, Zahreddine NR, Maragel MG, Almustafa MA, Soufia M, Haddad R, et al. Post-traumatic stress disorder in a sample of Syrian refugees in Lebanon. *Comprehensive Psychiatry*. 2017;72:41-7.
34. Alpak G, Unal A, Bulbul F, Sagaltici E, Bez Y, Altindag A, et al. Post-traumatic stress disorder among Syrian refugees in Turkey: a cross-sectional study. *Int J Psychiatry Clin Pract*. 2015;19(1):45-50.
35. Freedy JR, Donkervoet JC. Traumatic Stress. *Traumatic Stress*1995. p. 3-28.
36. Ali M, Farooq N, Bhatti MA, Kuroiwa C. Assessment of prevalence and determinants of posttraumatic stress disorder in survivors of earthquake in Pakistan using Davidson Trauma Scale. *Journal of Affective Disorders*. 2012;136(3):238-43.
37. Hong C, Efferth T. Systematic Review on Post-Traumatic Stress Disorder Among Survivors of the Wenchuan Earthquake. *Trauma, Violence, & Abuse*. 2016;17(5):542-61.
38. Ursano RJ, Bell C, Eth S, Friedman M, Norwood A, Pfefferbaum B, et al. Practice guideline for the treatment of patients with acute stress disorder and posttraumatic stress disorder. *Am J Psychiatry*. 2004;161(11 Suppl):3-31.
39. Kiely JM, Brasel KJ, Weidner KL, Guse CE, Weigelt JA. Predicting Quality of Life Six Months After Traumatic Injury. *The Journal of Trauma: Injury, Infection, and Critical Care*. 2006;61(4):791-8.
40. Teramoto C, Matsunaga A, Nagata S. Cross-sectional study of social support and psychological distress among displaced earthquake survivors in Japan. *Japan Journal of Nursing Science*. 2015;12(4):320-9.
41. Abu-Saba MB. War-related trauma and stress characteristics of American University of Beirut students. *Journal of Traumatic Stress*. 1999;12(1):201-7.
42. Brewin CR, Andrews B, Valentine JD. Meta-analysis of risk factors for posttraumatic stress disorder in trauma-exposed adults. *Journal of Consulting and Clinical Psychology*. 2000;68(5):748-66.
43. Visser E, Gosens T, Den Oudsten BL, De Vries J. The course, prediction, and treatment of acute and posttraumatic stress in trauma patients. *Journal of Trauma and Acute Care Surgery*. 2017;82(6):1158-83.
44. Sippel LM, Pietrzak RH, Charney DS, Mayes LC, Southwick SM. How does social support enhance resilience in the trauma-exposed individual? *Ecology and Society*. 2015;20(4).
45. Bahaa Aldin Alhaffar MH, Mustafa K, Sabbagh S, Yabrode K, Shebib G, Kouchaji C. Seven years of war in Syria: The relation between oral health and PTSD among children. *Indian Journal of Oral Health and Research*. 2018;4(1).
46. Hamid SH, Dashash MAD. The impact of post-traumatic stress disorder on dental and gingival status of children during syrian crisis: A preliminary study. *Journal of Investigative and Clinical Dentistry*. 2019;10(1).
47. Alhaffar MBA, Mustafa K, Sabbagh S, Yabrode K, Shebib G, Kouchaji CJIJoOH, et al. Seven years of war in Syria: The relation between oral health and PTSD among children. 2018;4(1):10.
48. Kakaje A, Alhalabi MM, Alyousbashi A, Hamid A, Hosam Aldeen O. Allergic Rhinitis and Its Epidemiological Distribution in Syria: A High Prevalence and Additional Risks in War Time. *BioMed Research International*. 2020;2020:1-9.

49. Kakaje A, Alhalabi MM, Alyousbashi A, Hamid A, Mahmoud Y. Laryngopharyngeal reflux in war-torn Syria and its association with smoking and other risks: an online cross-sectional population study. *BMJ Open*. 2020;10(11).
50. Kakaje A, Alhalabi MM, Alyousbashi A, Ghareeb A, Hamid L. Smoking habits in Syria and the influence of war on cigarette and shisha smoking. 2020.
51. Al Saadi T, Zaher Addeen S, Turk T, Abbas F, Alkhatib M. Psychological distress among medical students in conflicts: a cross-sectional study from Syria. *BMC Medical Education*. 2017;17(1).
52. Turk T, Al Saadi T, Alkhatib M, Hanafi I, Alahdab F, Firwana B, et al. Attitudes, barriers, and practices toward research and publication among medical students at the University of Damascus, Syria. *Avicenna Journal of Medicine*. 2018;8(1).
53. Gruebner O, Rapp MA, Adli M, Kluge U, Galea S, Heinz A. Cities and Mental Health. *Deutsches Aerzteblatt Online*. 2017.

Tables

TABLE 1					
Characteristics of the subjects with characteristics of war, current medical conditions, and K10 Scale					
Characteristic	Frequency (n=1951)	Percentage%	Characteristic	Frequency (n=1951)	Percentage%
Age			Changing area of living due to war		
14 - 18	52	2.7	No		
19 - 25	1538	78.8	Yes within the same city	977	50.1
26 - 45	333	17.1	Yes with changing the city	429	22.0
46 - 65	28	1.4	Yes I had to do both	488	25.0
				57	2.9
Gender			Number pf times changing place of living due to war		
Male	527	27.0	No		
Female	1424	73.0	Once	977	50.1
			Twice	224	11.5
			Thrice and more	211	10.8
				539	27.6
Marital Status			Place of origin		
Single	1617	83.0	Damascus, Rif-Dimashq, and Aleppo	1045	53.6
Engaged	86	4.4	Homs and Hama		
Married	217	11.1	Al-Jazira region	354	18.1
Divorced	21	1.1	Southern Syria	94	4.8
Widowed	7	0.4	Syrian coast	142	7.3
			Idlib	200	10.3
			Other	82	4.2
				34	1.7
Consanguinity			A relative being endangered by the war		
No	1416	72.6	No	284	14.6
Yes third-degree relatives	300	15.4	Yes	1667	85.4
Yes fourth-degree relatives	97	5.0			
Yes but not close relatives	138	7.1			
Medical Conditions			Characteristic (n=1951)	Frequency (Percentage%)	CI:95%
Negative	1008	81.9	Kessler psychological distress Scale (K10)		
Asthma	63	5.1	No	376 (19.3%)	17.5% – 21.0%
Hypertension	23	1.9	Mild	381 (19.5%)	17.8% – 21.3%
Diabetes	6	0.5	Moderate	322 (16.5%)	
Asthma, Hypertension	6	0.5	Severe	872 (44.7%)	14.9% – 18.1%
Diabetes, Hypertension	4	0.3			
Other	121	9.8			42.6% – 47.0%
Being distressed from the war noises			SPTSS items		
No	407	20.9	Avoidance	1040 (53.3%)	51.2% - 55.6%
Yes	1544	79.1	No Avoidance	910 (46.6%)	44.3% - 48.8%
Educational level			Arousal		
Primary School	27	1.4	No Arousal	1257 (64.4%)	62.4% - 66.5%
				693 (35.6%)	

High School	127	6.5			33.4% - 37.5%
University or any high institute	1671	85.6	Re-experience	1150 (58.9%)	
Masters or PhD	126	6.5	No Re-experience	800 (41.0%)	56.9% - 61.2%
			Two or more	1186 (60.8%)	38.7% - 43.0%
			Full SPTSS symptoms	720 (36.9%)	58.7% - 62.7%
					35.0% - 39.1%
Type of work			MSPSS		
At a company	103	6.2	Family		
Clerk or at a restaurant	21	1.3	Low	402 (20.6%)	18.8% - 22.4%
Education	104	6.3	Medium	575 (29.5%)	27.6% - 31.5%
Freelancer	78	4.7	high	971 (49.8%)	47.6% - 52.2%
Journalism	4	0.2	Friends		
Law	10	0.6	Low	738 (37.8%)	31.7% - 36.3%
Health care	234	14.2	Medium	666 (34.2%)	26.2% - 30.2%
Unemployed	1100	66.5	high	546 (28.0%)	
SES Level			Significant other		
Lower	30	1.5	Low	511 (26.2%)	24.3% - 28.3%
Upper Lower	483	24.8	Medium	613 (31.4%)	29.4% - 33.5%
Middle	1044	53.5	high	826 (42.4%)	40.1% - 44.7%
Upper	394	20.2			
Losing someone due to the war			Total MSPP		
No	697	35.7	Low	452 (23.2%)	21.3% - 25.1%
Yes	1254	64.3	Medium	830 (42.5%)	40.3% - 44.6%
			high	669 (34.3%)	32.2% - 36.5%

TABLE 2: Demonstrate relationship between variables and K10 and mspss scores.								
Characteristic	K10 score				MSPSS Score			
	Mean	SD	P value	F	Mean	SD	P value	F
Gender	29.3	9.8	<0.001	21.8	51.3	18.2	NS	0.9
Female	27.0	9.7			50.5	18.4		
Male								
Consanguinity	28.8	9.9	0.038 ^{NS}	2.8	51.0	18.4	NS	1.9
No	28.7	9.5			50.5	18.6		
Yes third-degree relatives	26.1	9.4			55.4	16.9		
Yes fourth-degree relatives	29.7	9.9			50.6	16.4		
Yes but not close relatives								
Marital status	28.7	9.8	NS	0.2	50.7	18.2	0.002	4.4
Single	28.0	10.1			58.5	15.7		
Engaged	28.7	10.1			52.1	19.0		
Married	28.9	9.6			51.6	16.5		
Widowed	29.8	11.6			45.8	17.9		
Divorced								
Educational level	39.7	9.3	<0.001	13	39.5	19.9	0.011 ^{NS}	3.7
Primary School	30.5	8.9			50.2	18.4		
High School	28.4	9.8			51.3	18.1		
University or any high institute	29.1	9.7			51.6	18.9		
Masters or PhD								
SES	32.0	11.1	<0.001	8.5	38.2	17.8	<0.001	15.9
Lower	30.4	9.8			48.0	18.1		
Upper Lower	28.3	9.7			51.4	18.3		
Middle	27.4	10.0			55.0	17.1		
Upper								
Working	28.9	9.8	NS	1.0	51.1	18.0	NS	0.1
No	28.4	9.8			51.3	18.5		
Yes								
Age groups	31.7	9.6	<0.001	8.1	50.5	17.0	NS	0.3
14 - 18	28.6	9.8			51.2	18.1		
19 - 25	29.3	10.1			50.7	18.7		
26 - 45	20.8	6.7			48.5	22.2		
46 - 65								
Losing someone close due to war	28.0	9.7	0.013 ^{NS}	6.2	51.7	18.1	NS	1.3
No	29.1	9.9			50.7	18.3		
Yes								
A relative being endangered by the war	28.1	9.6	NS	1.4	50.2	18.4	NS	0.7
No	28.8	9.9			51.2	18.2		
Yes								
Distressed from war noises	27.1	9.9	<0.001	13.5	50.2	18.5	NS	1.3
Negative	29.1	9.8			51.3	18.2		
Positive								
Changing place of living due to war	28.0	9.6	0.005 ^{NS}	4.2	52.2	18.3	0.027 ^{NS}	3.1

No	29.6	9.8			50.9	18.1		
Within the same city	29.5	10.2			49.3	18.3		
Changing the city	28.4	9.4			48.8	16.1		
Doing both								
Number of times changing places of living due to war	28.0	9.6	<0.001	8.8	52.2	18.3	0.011 ^{NS}	3.7
No	27.5	10.3			51.8	17.3		
Once	29.3	9.6			50.6	17.8		
Twice	30.4	9.9			49.0	18.5		
Thrice and more								
The reason declared of stress in the last period:*	27.6	9.3	<0.001	7.3	54.2	17.4	0.001	4.4
Educational	29.5	10.2			52.8	17.3		
Economical	30.4	10.2			49.7	18.0		
Social	30.2	9.7			49.9	19.8		
War-related	32.9	8.4			54.1	19.8		
Medical					38.5	20.8		
Other								
Do you consider that the crisis was the main cause of your distress lately?*								
No	26.2	9.5			53.2	18.8		
Kind of	28.5	9.9	<0.001	28.3	51.2	18.1	0.054 ^{NS}	2.9
Yes totally	31.3	9.8			50.0	18.0		
One-way ANOVA test was used in this table								
* These were not included in the regression as they do not generate extra results and they overlap with most variables.								
When using Bonferroni correction, $P = (0.05 \setminus 14) \approx 0.004$ or less to be statistically significant.								

TABLE 3															
Comparing Each SPTSS Cluster with Other Variables															
	Avoidance					Arousal					Re-experience				
	Negative (n =910) - %		Positive (n =1040) - %		P value	Negative (n =693) - %		Positive (n =1257) - %		P value	Negative (n=800) - %		Positive (n =1150) - %		P value
Gender	247	27.1%	280	26.9%		208	30.0%	319	25.4%		239	29.9%	288	25.0%	
Male	663	72.9%	760	73.1%	NS	485	70.0%	938	74.6%	0.073	561	70.1%	862	75.0%	NS
Female										NS					
Consanguinity	656	72.1%	759	73.0%		496	71.6%	919	73.1%		591	73.9%	824	71.7%	
No	134	14.7%	166	16.0%	NS	103	14.9%	197	15.7%	NS	111	13.9%	189	16.4%	NS
Third-degree relatives	53	5.8%	44	4.2%		42	6.1%	55	4.4%		47	5.9%	50	4.3%	
Fourth-degree relatives	67	7.4%	71	6.8%		52	7.5%	86	6.8%		51	6.4%	87	7.6%	
Distant relatives															
Marital status	750	82.5%	866	83.4%		574	82.9%	1042	83.0%		661	82.7%	955	83.2%	
Single	47	5.2%	39	3.8%		31	4.5%	55	4.4%		31	3.9%	55	4.8%	
Engaged	97	10.7%	120	11.6%	NS	78	11.3%	139	11.1%	NS	94	11.8%	123	10.7%	NS
Married	10	1.1%	11	1.1%		6	0.9%	15	1.2%		9	1.1%	12	1.0%	
Divorced	5	0.6%	2	0.2%		3	0.4%	4	0.3%		4	0.5%	3	0.3%	
Widowed															
Educational level	2	0.2%	23	2.3%		2	0.3%	25	1.9%		5	0.6%	22	1.8%	
Primary School	45	4.9%	81	7.8%	<0.0001	30	4.3%	96	7.6%	<0.0001	44	5.5%	82	7.1%	0.004
High School	807	88.7%	864	83.2%		624	90.0%	1047	83.4%		700	87.5%	971	84.5%	
University or any high institute	56	6.2%	70	6.7%		37	5.3%	89	7.1%		51	6.4%	75	6.5%	
Masters or PhD															
SES	14	1.5%	16	1.5%		8	1.2%	22	1.8%		9	1.1%	21	1.8%	
Lower	199	21.9%	283	27.2%	0.028	136	19.6%	346	27.5%	0.003	176	22.0%	306	26.6%	0.055
Upper Lower	490	53.8%	554	53.3%	NS	393	56.7%	651	51.8%		435	54.4%	609	53.0%	NS
Middle	207	22.7%	187	18.0%		156	22.5%	238	18.9%		180	22.5%	214	18.6%	
Upper															
Working	497	65.0%	600	67.6%		385	67.2%	712	66.0%		433	64.5%	664	67.8%	
No	267	35.0%	287	32.4%	NS	188	32.8%	366	34.0%	NS	238	35.5%	316	32.2%	NS
Yes															
Age groups	24	2.6%	27	2.6%		15	2.2%	36	2.9%		14	1.8%	37	3.2%	
14 - 18	720	79.1%	818	78.7%	<0.0001	563	81.2%	975	77.6%	<0.0001	639	79.9%	899	78.2%	<0.0001
19 - 25	147	16.2%	186	17.9%		102	14.7%	231	18.4%		128	16.0%	205	17.8%	
26 - 45	19	2.1%	9	0.9%		13	1.9%	15	1.2%		19	2.4%	9	0.8%	
46 - 65															
Losing someone close due to war	351	38.6%	346	33.3%		270	39.0%	427	34.0%		339	42.4%	358	31.1%	
No	559	61.4%	694	66.7%	0.039	423	61.0%	830	66.0%	0.067	461	57.6%	792	68.9%	<0.0001
Yes					NS					NS					
A relative being	138	15.2%	146	14.0%		113	16.3%	171	13.6%		132	16.5%	152	13.2%	
	772	84.8%	894	86.0%		580	83.7%	1086	86.4%		668	83.5%	998	86.8%	

endangered by the war					NS					NS					NS	NS
No																
Yes																
Distressed from war noises	195 715	21.4% 78.6%	211 829	20.3% 79.7%	NS	185 508	26.7% 73.3%	211 1036	17.6% 82.4%	<0.0001	196 604	24.5% 75.5%	210 940	18.3% 81.7%	0.001	0.001
Negative																
Positive																
Changing place of living due to war	495 195 195 25	54.4% 21.4%	482 233 293 32	46.3% 22.4%	0.004	361 138 172 22	52.1% 19.9%	616 290 316 35	49.0% 23.1%	NS	413 173 191 23	51.6% 21.6%	564 255 297 34	49.0% 22.2%	NS	0.001
No		21.4%		28.2%			24.8%		25.1%			23.9%		25.8%		NS
Within the same city		2.7%		3.1%			3.2%		2.8%			2.9%		3.0%		
With changing city																
Both																
Number of times changing places of living due to war	495 123 87 205	37.8% 22.7% 13.5% 25.9%	482 101 124 333	31.5% 16.7% 15.9% 35.9%	<0.0001	361 103 63 166	38.0% 23.8% 11.7% 26.6%	616 121 148 372	32.5% 17.2% 16.5% 33.8%	0.001	413 107 91 189	36.4% 22.4% 14.8% 26.5%	564 117 120 349	33.1% 17.6% 14.8% 34.5%	0.016 NS	<0.0001
Never																
Once																
Twice																
Thrice and more																
The main reason declared of stress in the last period:*	197 58 212 20 8 4	39.5% 11.6%	191 69 292 30 25 9	31.0% 11.2%	0.014 NS	155 39 143 8 5 3	43.9% 11.0%	233 88 361 42 28 10	30.6% 11.5%	0.0001	173 54 164 17 11 1	41.2% 12.9%	215 73 340 33 22 12	30.9% 10.5%	0.001	0.001
Educational		4.0%		4.9%			2.3%		5.5%			4.0%		4.7%		
Economical																
Social		1.6%		4.1%			1.4%		3.7%			2.6%		3.2%		
War-related		0.8%		1.5%			0.8%		1.3%			0.2%		1.7%		
Medical																
Other																
Do you consider that the crisis was the main cause of your distress lately?*	155 326 210	22.4% 47.2%	107 336 210	12.6% 39.6%	<0.0001	133 150 319	25.6% 45.5%	129 426 466	12.6% 41.7%	<0.0001	127 294 186	20.9% 48.4%	135 368 430	14.5% 39.4%	<0.0001	<0.0001
No																
Kind of																
Yes totally																
Where NS: not significant.																
Chi-square test was used in this table.																
# This p value is calculated between having no, one, two or three positive clusters																
* These were not included in the regression as they do not generate extra results and they overlap with most variables.																
When using Bonferroni correction, P= (0.05\14) ≈ 0.004 or less to be statistically significant.																

TABLE 4: Comparing Each Support in MSPSS with K10 and SPTSS clusters									
	Family Support			Friends support			Significant Other Support		
	Mean	SD	P value	Mean	SD	P value	Mean	SD	P value
K 10	21.0	6.6	<0.001	17.2	7.0	<0.001	19.6	7.3	<0.001
No	19.0	6.8		15.1	7.3		17.9	7.6	
Low	18.3	7.2		14.3	7.3		17.3	7.7	
Medium	17.7	7.2		14.0	7.3		16.6	7.9	
High									
SPTSS	20.2	6.6	<0.001	16.5	7.1	<0.001	19.2	7.3	<0.001
No	17.4	7.2		13.4	7.2		16.1	7.9	
Avoidance									
No	20.0	6.6	<0.001	16.3	7.1	<0.001	18.9	7.4	<0.001
Arousal	18.0	7.2		14.1	7.3		16.8	7.9	
No	20.1	6.5	<0.001	16.3	6.9	<0.001	18.8	7.3	<0.001
Re-experience	17.8	7.3		13.9	7.5		16.7	8.0	
None	20.6	6.4	<0.001	17.1	6.9	<0.001	19.4	7.0	<0.001
One	20.1	6.6		16.4	6.8		19.1	7.5	
Two	18.7	7.0		14.5	7.3		17.6	7.7	
Three	16.9	7.4		13.1	7.3		15.7	7.9	
NS: not significant.									
One-war ANOVA test was used in this table.									

Table 5: demonstrating forward linear regression on K10 scores, MSPSS, Avoidance, Hyper-arousal, and re-experience score with their relevant statistically significant variables.

	Model	R	R ²	Adjusted R ²	Std. Error of the Estimate	Change Statistics					Unstandardized Coefficients β	Standardized Coefficients β	S
						R ² Change	F Change	df1	df2	Sig. F Change			
K10 score	Number of time changing place of living	.125 ^a	.016	.015	9.757	.016	30.728	1	1948	.000	.838	.106	.000
	Gender	.160 ^b	.026	.025	9.709	.010	20.440	1	1947	.000	-2.098	-.095	.000
	SES	.191 ^c	.037	.035	9.657	.011	21.896	1	1946	.000	-1.481	-.107	.000
	Educational level	.207 ^d	.043	.041	9.629	.006	12.350	1	1945	.000	-1.539	-.067	.000
	Age group	.212 ^e	.045	.043	9.620	.002	4.803	1	1944	.029	-1.100	-.053	.000
	Being distressed from war noise	.218 ^f	.047	.044	9.610	.002	4.861	1	1943	.028	1.224	.051	.000
MSPSS score	SES	.151 ^a	.023	.022	18.010	.023	45.328	1	1945	.000	3.865	.151	.000
Avoidance score	Number of time changing place of living	.106 ^a	.011	.011	1.854	.011	22.114	1	1947	.000	.150	.100	.000
	Educational level	.119 ^b	.014	.013	1.852	.003	5.702	1	1946	.017	-.236	-.054	.000
Hyper-arousal score	Being distressed from war noise	.126 ^a	.016	.015	1.455	.016	31.549	1	1947	.000	.419	.116	.000
	SES	.159 ^b	.025	.024	1.449	.009	18.503	1	1946	.000	-.184	-.089	.000
	Number of time changing place of living	.180 ^c	.032	.031	1.444	.007	14.430	1	1945	.000	.093	.079	.000
	Educational level	.188 ^d	.035	.033	1.442	.003	5.789	1	1944	.016	-.185	-.054	.000
re-experience score	Being distressed from war noise	.114 ^a	.013	.012	1.610	.013	25.648	1	1947	.000	.440	.110	.000
	Losing someone due to war	.153 ^b	.024	.023	1.601	.011	21.020	1	1946	.000	.349	.103	.000
	Educational level	.173 ^c	.030	.029	1.596	.007	13.063	1	1945	.000	-.306	-.081	.000

Figures

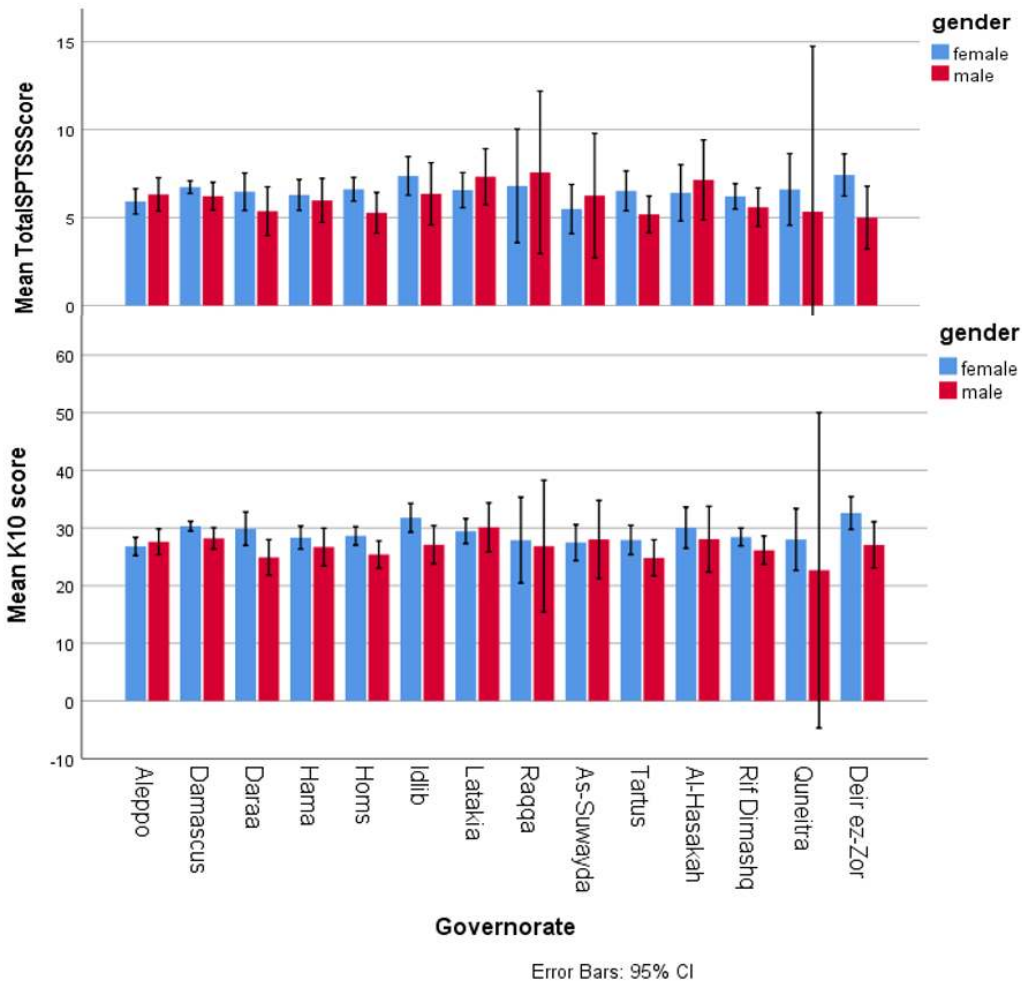


Figure 1

Mean SPTSS and K10 scores in each Syrian Governorate showing governorate of current living of the subjects with their K10 scale and full SPTSS according to their gender.

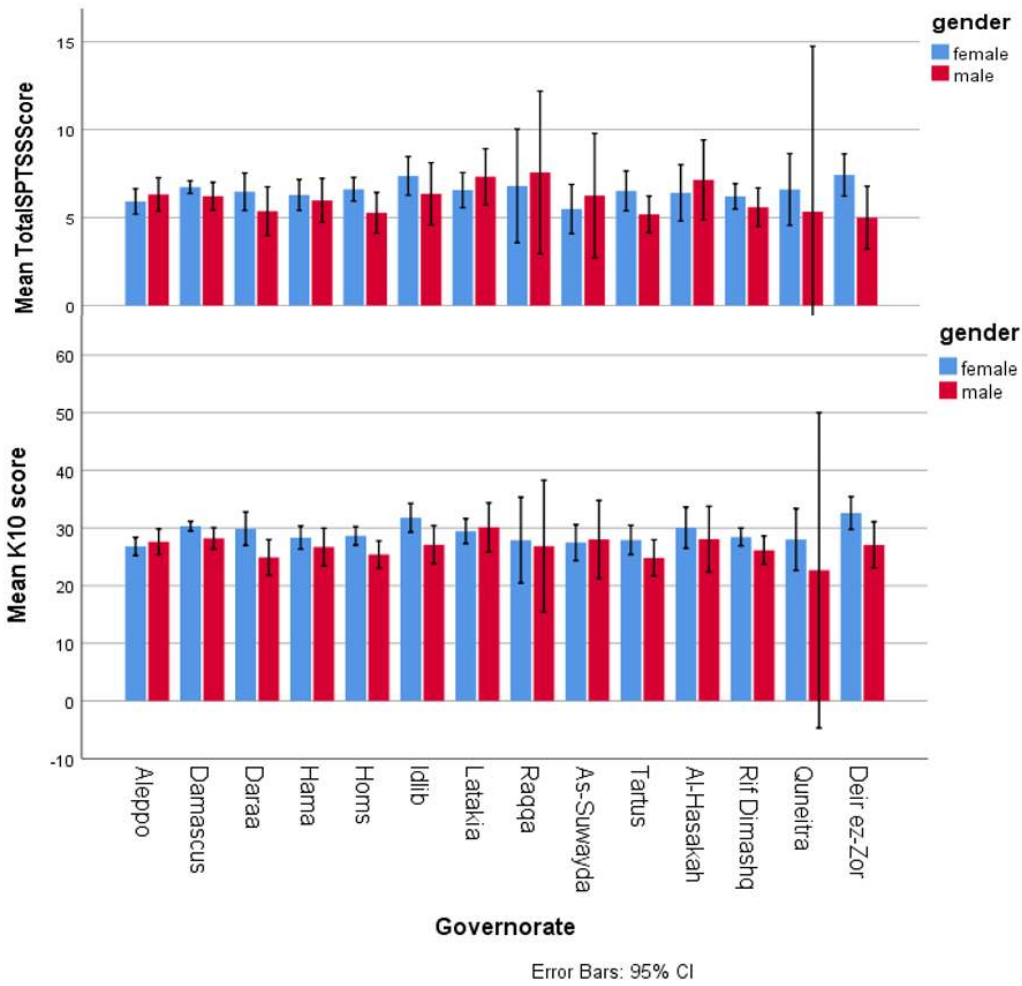


Figure 1
 Mean SPTSS and K10 scores in each Syrian Governorate showing governorate of current living of the subjects with their K10 scale and full SPTSS according to their gender.

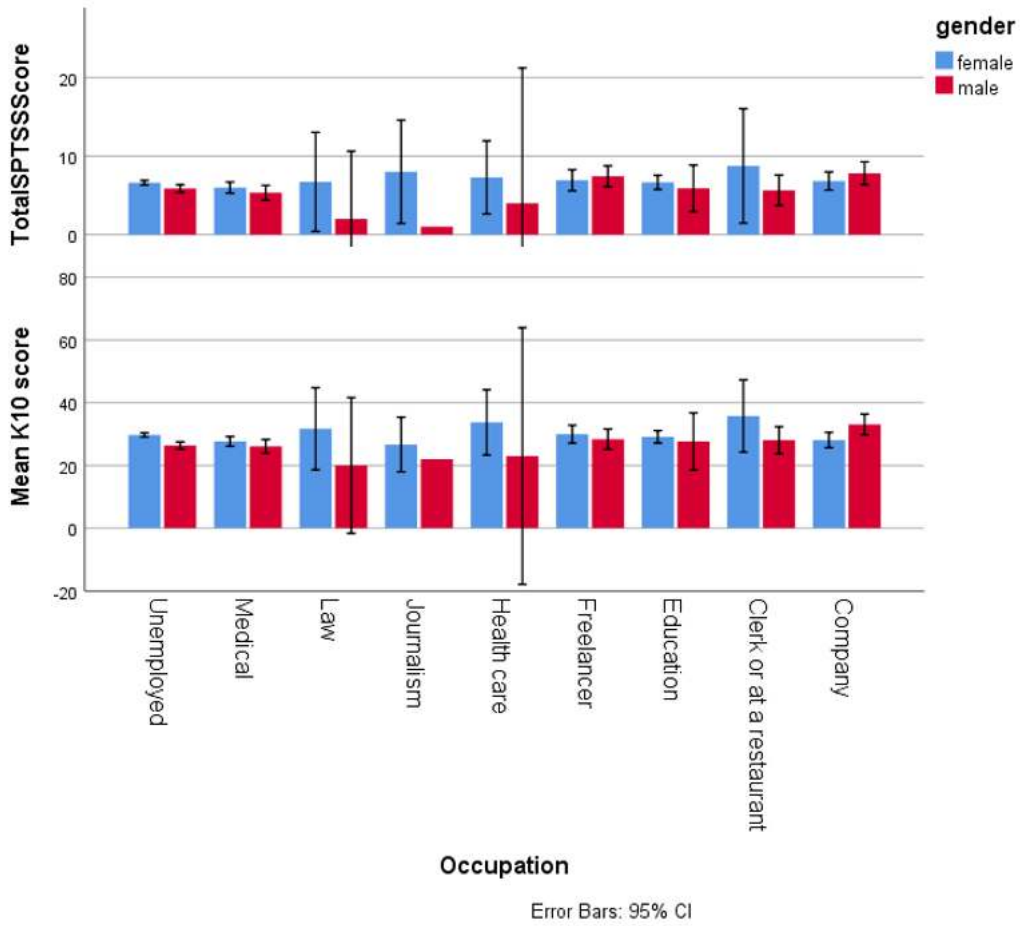


Figure 2

Mean SPTSS and K10 scores for each Occupation showing SPTSS and K10 mean scores according to occupation

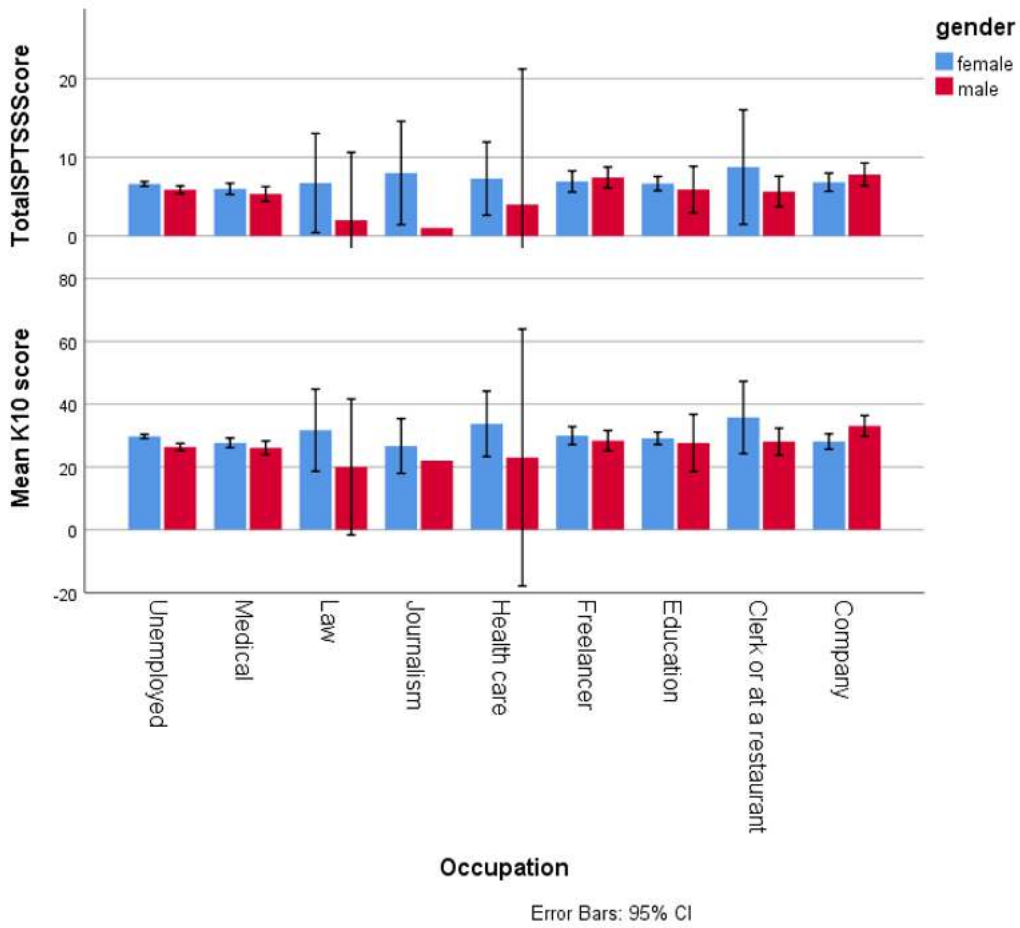


Figure 2

Mean SPTSS and K10 scores for each Occupation showing SPTSS and K10 mean scores according to occupation