

# MET/HGF pathway activation as a paradigm of resistance to targeted therapies

Brian Ko<sup>1</sup>, Tianfang He<sup>1</sup>, Shirish Gadgeel<sup>2</sup>, Balazs Halmos<sup>1</sup>

<sup>1</sup>Department of Oncology, Montefiore Medical Center/Albert Einstein College of Medicine, Bronx, NY 10467, USA; <sup>2</sup>Department of Oncology, Barbara Ann Karmanos Cancer Institute/Wayne State University, Detroit, MI 48201, USA

**Contributions:** (I) Conception and design: B Halmos; (II) Administrative support: B Halmos; (III) Provision of study materials or patients: None; (IV) Collection and assembly of data: All authors; (V) Data analysis and interpretation: All authors; (VI) Manuscript writing: All authors; (VII) Final approval of manuscript: All authors.

**Correspondence to:** Balazs Halmos, MD. Department of Oncology, Montefiore Medical Center/Albert Einstein College of Medicine, Bronx, NY 10467, USA. Email: bahalmos@montefiore.org.

**Abstract:** Resistance to targeted therapeutics is a key issue limiting the long-term utility of these medications in the management of molecularly selected subsets of cancer patients, including patients with non-small cell lung cancer harboring oncogenic alterations affecting *EGFR*, *ALK* and other genes. Bypass resistance mediated by activation of MET kinase has emerged as a frequent, validated and pivotal resistance mechanism in multiple types of cancers. Biochemical understanding is accumulating to explain the unique role of MET in such bypass pathways, providing alternate downstream activation opportunities and intricate interactions during epithelial-mesenchymal transitions. Multiple diagnostic testing platforms have become available for selecting appropriate patients for MET targeting in a variety of settings. Importantly, in light of the failures of several earlier clinical studies of MET targeting agents, a large array of recent and current MET-focused trials are incorporating stricter patient selection and more robust predictive biomarkers providing hope for validation of MET targeting as a clinically impactful strategy.

**Keywords:** MET; *EGFR*; lung cancer; targeted therapeutics; tyrosine kinase; resistance

Submitted Sep 15, 2016. Accepted for publication Oct 19, 2016.

doi: 10.21037/atm.2016.12.09

**View this article at:** <http://dx.doi.org/10.21037/atm.2016.12.09>

## Introduction

The current review focuses on the role of the MET proto-oncogene receptor tyrosine kinase (MET)/hepatocyte growth factor (HGF) pathway as a key participant in resistance mechanisms for targeted therapies. We will first introduce the paradigm of resistance mechanisms through the case of epidermal growth factor receptor (EGFR) inhibition in *EGFR*-mutated lung adenocarcinoma, providing a model for many key aspects that are integral to overcoming drug resistance. Then, the involvement of MET signaling pathways in targeted therapy resistance in a variety of settings will be addressed and biochemical and cell-level mechanisms of the MET pathway will be highlighted. Lastly, we will discuss emerging biomarkers

for patient selection as well as provide a survey of relevant ongoing and completed clinical studies focusing on MET inhibition in the context of targeted therapeutic resistance.

## Primary (*de novo*) and acquired resistance to targeted therapy

With rapid advancements in detecting genomic alterations, it is increasingly possible to select specific targeted therapies a priori for patients whose tumors have a high probability of responding to initial treatment, often by identifying molecularly defined subsets associated with oncogene addicted tumors. Prominent examples of such include *BCR-ABL1* positive chronic myeloid leukemia, *KIT*-mutated gastrointestinal stromal tumors and *EGFR*-mutated,

anaplastic lymphoma receptor tyrosine kinase (*ALK*) gene rearrangement-positive, and ROS proto-oncogene 1 (*ROS1*) gene rearrangement-positive non-small cell lung cancers (NSCLC). However, even in patients whose tumors dramatically and deeply respond to a rationally chosen targeted therapy, acquired resistance develops in nearly all patients, invariably so in advanced lung cancer with actionable mutations (1). For a given targeted therapy, tumors that do not respond to initial treatment are defined as having primary, or *de novo*, resistance. Of the subset of tumors that do respond to initial treatment, tumors that eventually stop responding to targeted therapy are said to have acquired resistance. It remains an urgent priority of molecular research to address the difficult challenge of overcoming primary and acquired resistance in order to achieve the goal of durable clinical responses with targeted therapy approaches in oncogene addicted lung cancer and other malignancies.

### Acquired resistance via EGFR-dependent pathways in EGFR-mutated lung cancer

In the realm of thoracic malignancies, the great promise and success of targeted therapy and the potential options of overcoming acquired resistance are most developed in *EGFR*-mutated lung cancer. Mutations in the *EGFR* gene are present in approximately 10–20% of all NSCLCs with higher incidence in females, non-smokers, younger patients, and adenocarcinoma histology, occurring as frequently as 30–50% in never-smokers with lung adenocarcinoma (2). Since the introduction of small molecule adenosine triphosphate (ATP)-mimetic *EGFR* tyrosine kinase inhibitors (TKI) and the subsequent discovery of recurrent and actionable *EGFR* mutations defining a subset of advanced NSCLC patients with dramatic and durable responses to these drugs, research in the *EGFR* inhibitor space has increased exponentially. While up to 60–80% of patients with *EGFR*-mutated tumors initially respond to first- and second-generation *EGFR* TKIs with significant improvement in both response rates and progression-free survival compared to upfront chemotherapy, resistance typically develops after 8–14 months of treatment (3).

Over the past decade, extensive research has identified a multitude of primary and acquired resistance mechanisms. One type of common genomic alteration involves mutations that prevent targeted therapies from effectively inhibiting their respective molecular targets. A prominent example

of this involves point mutations resulting in a threonine-to-methionine amino acid substitution at the gatekeeper position 790 of *EGFR*, which confers resistance to first-generation *EGFR* TKIs (4). This *EGFR* T790M mutation has also rarely been reported as a germline alteration leading to a high risk of lung cancer (5). It is also the most common mechanism of acquired resistance developing after treatment with first-generation *EGFR* TKIs, with 50–65% of tumors harboring such alterations at the time of disease progression (6). Interestingly, recent research suggests that certain tumors may harbor minute subclones with the T790M mutation, while in other tumors the mutation develops *de novo*. These different evolutionary paths that tumors can take depend on the presence or absence of T790M at disease onset (7). Novel third-generation T790M-directed *EGFR* inhibitors have demonstrated tremendous success in the clinic for T790M-mediated resistance and one lead compound, osimertinib, is now approved in this setting (8). Examples of similar second site mutations are numerous in other actionable kinases (9–12) and in these cases, cancer cells appear to maintain their original dominant dependence on the integrity of the native oncogenic pathway for continued cell proliferation and survival, principally via activation of cyclin D-dependent proliferative pathways and downregulation of the key pro-apoptotic protein, Bim (13,14).

### MET pathway activation as a bypass resistance mechanism

Bypass resistance refers to a type of genomic alteration that results in the activation of alternative ligands and/or receptors that sustain signaling of key downstream pathways, despite successful inhibition of the specific molecular target of a given targeted therapy. The first established model of such bypass pathway activation involves the *MET* pathway, including *MET* amplification and overexpression of the *MET* receptor's sole cognate ligand hepatocyte growth factor (HGF), which acts as a multi-functional cytokine primarily on cells of epithelial origin (15).

#### *The MET oncogene*

*MET*, which belongs to the *MET/RON* family, is a proto-oncogene located on chromosome 7q31.2 that encodes for a receptor tyrosine kinase (RTK) (16,17). The binding of HGF to the *MET* receptor favors its dimerization and

its autophosphorylation on two tyrosine residues in its catalytic domain, Y1234 and Y1235. Subsequently, other tyrosine residues are phosphorylated, including Y1003 in the juxtamembrane domain and Y1349 and Y1356 at the C-terminus tail, leading to the avid binding of many effectors. In particular, MET-related phosphorylation and activation of Gab1-mediated downstream pathways involving SHP2, p85-PI3K, PLC $\gamma$ , and the adapter protein, Crk are more protracted than EGFR-related Gab1 phosphorylation and activation. These events principally result in downstream signaling through the RAS-RAF-MEK-ERK pathway and the PI3K-AKT-mTOR pathway, playing an important role in cellular proliferation and cell survival (18). In addition, MET can associate with many cell membrane proteins including integrins, CD44v6 isoform, plexin type receptors and it can also interact with other RTKs such as EGFR. Even in the absence of HGF, MET can be transactivated by EGFR and simultaneous activation of MET and EGFR is synergistic. In malignant cells, aberrant signaling through the MET receptor promotes cellular invasion, migration, angiogenesis, and eventual metastasis (19,20).

Since it was first discovered in 1984, mutations in the *MET* gene have been directly associated with papillary renal cell carcinoma and *MET* aberrations frequently occur in hepatocellular carcinoma as well as head and neck squamous cell carcinomas (21). With regards to NSCLC, *MET* overexpression, high *MET* gene copy number, *MET* gene amplification, and high HGF levels due to overexpression via transcriptional upregulation, activating gene mutations, and alternative splicing have all been significantly associated with negative prognosis (18). *MET* is also intimately implicated in the processes of tissue remodeling and morphogenic differentiation within the context of transient epithelial-mesenchymal transition (EMT), which is characterized by loss of epithelial differentiation, cell dispersal, cell migration, and degradation of the epithelial matrix (22). In *MET*-driven cancer, the loss of tight regulation of these events leads to invasion and metastasis. Invasion can also be driven by hypoxia, which induces HGF and *MET* expression via HIF-1 $\alpha$ , rendering cells more sensitive to further HGF stimulation and *MET* overexpression (23,24).

Initially, the search for biomarkers defining cancers with *MET* pathway activation focused on *MET* overexpression, which is frequent and readily testable using routine assays such as immunohistochemistry (IHC). However, it does appear that genetic alterations in the *MET* pathway

provide more robust biomarkers for pathway activation and targeting. *MET* amplifications are found in 2–4% of untreated NSCLC tumors and are also found in other cancer types, such as gastric adenocarcinoma. Multiple case reports and case series suggest that a subset of *MET* high-amplified tumors can respond to *MET* inhibition. In addition, infrequent and recurrent *MET* gene mutations can occur in the semaphorin extracellular domain, juxtamembrane region, and the kinase domain (25). Mutations that involve the juxtamembrane domain, which is encoded by exons 14 and 15 and is necessary for *MET* receptor degradation via a critical tyrosine residue (Y1003), can cause tumorigenesis. More recently, recurrent mutations leading to *MET* exon 14 skipping have been reported to be the most common actionable *MET* alteration occurring in approximately 3–4% of NSCLCs (26,27) with a higher frequency reported in pulmonary sarcomatoid lung cancer, a rare, very aggressive and treatment-refractory subtype of lung cancer (28).

#### *MET* in EGFR TKI resistance

As for the role of the *MET* pathway in EGFR TKI resistance, the first report by Engelman and colleagues in 2007 provided experimental evidence that focal amplification of *MET* drives ErbB3-dependent activation of PI3K, conferring resistance to the first-generation EGFR TKI gefitinib (29). By exposing cell line models to increasing concentrations of gefitinib for extended periods of time, an *in vitro* model of drug resistance was developed. In this model, resistance to gefitinib could be overcome by combined treatment with gefitinib and a *MET* inhibitor but not with *MET* inhibitor monotherapy, suggesting a fundamental switch to co-dependence on the activity of both the EGFR pathway and *MET* pathway where the sustained downstream signaling of just one of these key kinase pathway is sufficient for cellular survival (29). In addition, *MET* overexpression caused by genomic amplification was noted in patient samples at the time of acquired resistance (29). Interestingly, in another preclinical study the converse situation has also been reported in which a *MET*-positive gastric carcinoma cell line became resistant to *MET* inhibitors through bypass activation of the EGFR pathway, resulting in sustained downstream signaling of the RAS-RAF-MEK-ERK and PI3K-AKT-mTOR pathways (30).

Initial reports suggested a fairly high frequency of *MET* amplification-mediated bypass resistance; however, this frequency was found to be substantially lower with the use of more precise detection techniques. For example,

while an initial study noted *MET* amplification detected by IHC in 4 out of 18 (22%) lung cancer specimens from patients that had developed resistance to EGFR TKIs, a later study from the same group using stricter fluorescence *in situ* hybridization (FISH) criteria detected 4 out of 37 cases (11%) cases with genomic *MET* amplification (6). The thoracic oncology group at Memorial Sloan Kettering Cancer Center reported 9 of 43 patients (21%) of *MET* amplification in their series utilizing array comparative genomic hybridization (31); however, it was noted that only one case involved a high level gene amplification and three of the cases also harbored *EGFR* T790M. Lower prevalence, as low as 5%, has been reported with the use of more stringent criteria for defining *MET* amplification, including MET/CEP7 ratio by FISH (32). In summary, *MET* amplification is a recurrent and definable event occurring in approximately 5–10% of *EGFR*-mutated tumors that have acquired resistance to EGFR inhibitors, representing the second most common validated EGFR resistance alteration.

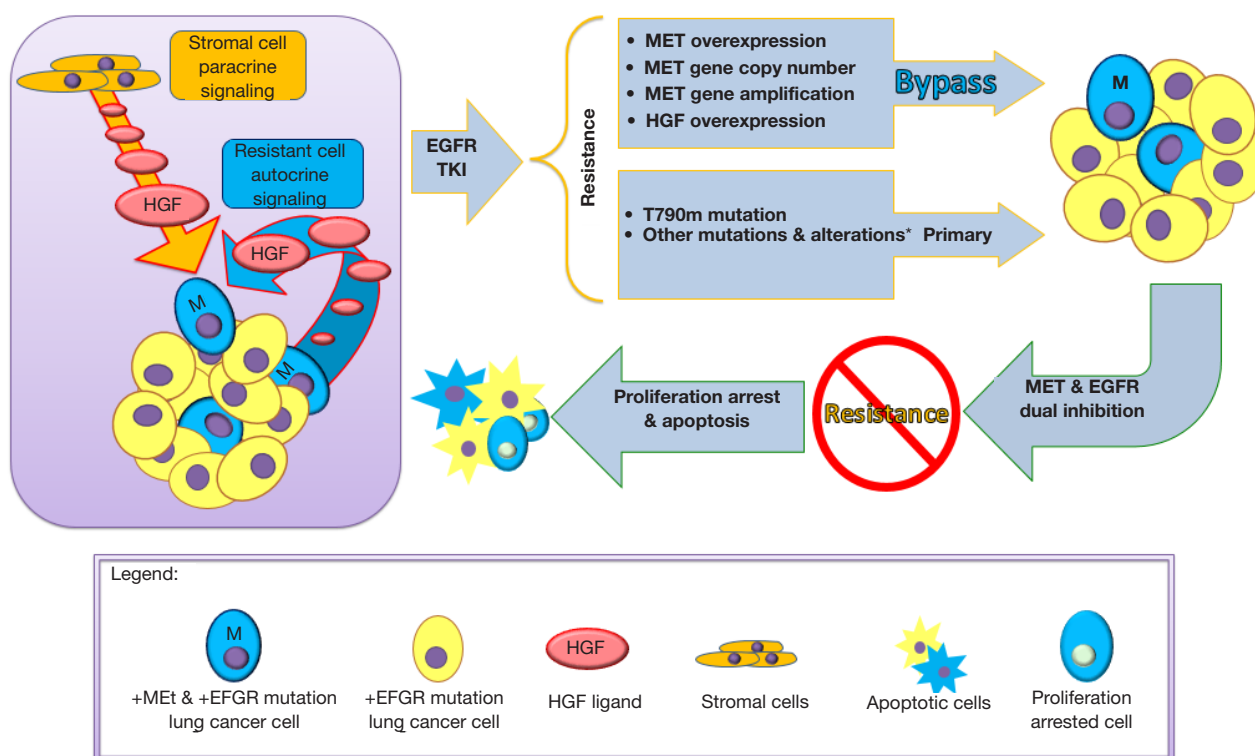
While it has been less carefully studied, it appears that *MET* activation can also serve as a primary resistance mechanism to EGFR-targeted therapy in *EGFR*-mutated lung cancer. The best evidence for this comes from the recent case report by Gainor and colleagues reporting on a 73-year-old never-smoker patient presenting with a malignant effusion from lung adenocarcinoma. Molecular testing demonstrated a classic *EGFR* L858R mutation as well as high level *MET* amplification of at least 30 copies, with a MET/CEP7 ratio greater than 15 in the pre-treatment diagnostic specimen (33). The patient was started on erlotinib therapy as per guideline recommendations, but rapidly progressed 4 weeks into therapy. Based on the patient's *MET* amplification crizotinib was added, leading to a dramatic clinical and radiographic response. While the rate of *de novo MET* amplification is anticipated to be no more than 3%, cases like this argue for broader upfront mutation profiling in *EGFR*-mutated lung cancer.

*MET* gene amplification can also act as a pre-existing resistance mechanism in certain cases (18). Using *in vitro* resistance models with a pan-ErbB kinase inhibitor, PF00299804, resistant clones of HCC827 were noted to recurrently carry *MET* amplifications, leading to *MET* overexpression-dependent EGFR TKI resistance that could be overcome by subsequent *MET* inhibition. All clones that emerged carried at least four-fold amplification of *MET*, and closer examination of the chromosome 7 amplicon suggested that all clones shared the same clonal origin. In addition, short-term HGF exposure rescued

cells from gefitinib-induced death through Gab1 adaptor protein signaling instead of through an ErbB3-dependent mechanism. In contrast, long-term HGF exposure led to the emergence of *MET*-amplified clones, resulting in a more typical resistance pattern. High-throughput FISH studies demonstrated that parental HCC827 cells harbor minor subfractions of cells with *MET* copy gains (6 out of 4,237, 0.14%). HGF exposure alone did not lead to the emergence of *MET*-amplified clones; the presence of EGFR inhibition was required, which may provide a unique growth advantage to a subset of cells with *MET* overexpression. In human correlative studies, *MET* amplification was identified in 4 out of 27 (15%) post-treatment specimens with the use of an IHC assay. HGF expression by IHC was also higher in some post-treatment specimens. In all four *MET*-amplified specimens, rare tumor cells with *MET* amplifications could be identified in the pre-treatment specimens, while only 1 out of 8 post-treatment non-*MET* amplified specimens harbored cells with detectable *MET* amplifications. An interesting clinical observation demonstrating the waxing and waning of a *MET* amplified subclone in a patient dependent on EGFR TKI therapy corroborates these findings (34). Overall, these studies strongly suggest that specific mechanisms of drug resistance that develop as a result of drug exposure may be predetermined and occur as a result of drug selective pressure. In the case of *MET* pathway activation, resistance can emerge over time in the context of long-term drug exposure due to the presence of *MET*-amplified subclones and both paracrine and autocrine HGF stimulation, leading to enrichment and clonal selection (Figure 1).

### *MET* in resistance to third-generation EGFR TKIs

More recently, EGFR T790M-directed third-generation EGFR inhibitors have demonstrated great success in the management of EGFR T790M-mediated resistance. Two lead compounds, rociletinib and osimertinib, showed excellent response rates in this context and osimertinib has been approved by the FDA for this indication (8); however, the development of rociletinib has been suspended since. *In vitro* studies with HCC827 cell line models demonstrated that *MET* activation via *MET* amplification can serve as a resistance mechanism not only to first-generation EGFR inhibitors but also to third-generation EGFR inhibitors (35). In these cell models, a combination of osimertinib and the MET/ALK TKI crizotinib overcame resistance, leading to enhanced Bim stability and



**Figure 1** Schematic illustration of the emergence of drug resistance to EGFR tyrosine kinase inhibitors highlighting the role of autocrine and paracrine MET/HGF pathway alterations and the preexistence of subclonal MET amplified drug-resistant cell subsets.

augmentation of apoptosis; regaining sensitivity was closely correlated with full suppression of ErbB3 phosphorylation. Since acquired resistance uniformly develops with the use of third-generation EGFR inhibitors as well, case reports and case series are emerging identifying analogous mechanisms of secondary acquired resistance with novel EGFR mutations (C797S) that disallow covalent binding of third-generation EGFR inhibitors as well as bypass resistance via MET pathway activation (36).

For example, in a recent case report of an *EGFR*-mutated T790M lung cancer patient treated with the third-generation EGFR TKI osimertinib, post-treatment tumor biopsies revealed high levels (30 copies) of *MET* amplification. Interestingly, crizotinib provided transient symptomatic and clinical benefit, lending credence to the idea of investigating combined EGFR and MET inhibition (37). In a cohort of 43 patients on rociletinib, CAPP-Seq circulating tumor DNA (ctDNA) was utilized to monitor emerging resistance mechanisms and *MET* copy number gains were noted in 11 patients (26%) (38). High-level *MET* amplification was also

demonstrated in correlative mouse xenograft studies upon rociletinib exposure that could be overcome with the addition of crizotinib.

#### *HGF as paracrine mediator of resistance*

HGF overexpression represents another MET pathway-related mechanism of resistance to EGFR inhibitors. Excessive autocrine signaling of HGF through overexpression activates MET in a Gab1 signaling-dependent manner and accelerates the development of *MET* amplification *in vitro* and *in vivo*, leading to resistance to gefitinib (39). This represents an important example of ligand-mediated drug resistance, with HGF overexpression having the ability to independently rescue both PI3K-AKT-mTOR and RAS-RAF-MEK-ERK signaling in the presence of first-generation EGFR tyrosine kinase inhibitors (40). Studies by Yano and colleagues demonstrated that in 23 *EGFR*-mutated NSCLCs with acquired resistance where post-resistance biopsy specimens were available, 14 had high levels of HGF

expression (61%), 12 had *EGFR* T790M (52%), and two had *MET* amplification (9%) (41). As HGF is produced by lung cancer cells as well as stromal and fibroblast cells in the tumor microenvironment, resistance can be based on both autocrine and paracrine pathways and can synergize with *MET* amplification. HGF production by the stroma may also partially explain why clinical resistance might emerge preferentially in some organ sites and tissues. In addition, changes in serum HGF levels may be able to serve as predictive biomarkers of acquired resistance (42).

### Other bypass signaling and alternative resistance mechanisms

Similar bypass signaling pathways have been repeatedly identified in preclinical, animal, and human studies, including the activation of ErbB2, AXL and IGF1R pathways; however, these mechanisms are not well validated yet in the clinic (43,44). Other known acquired resistance mechanisms include epithelial-mesenchymal transitions, which to some extent overlap with *MET*/AXL-activated tumor subsets, and rare transformations of NSCLC into small cell lung cancer which are sensitive to standard small cell lung cancer therapies, highlighting the need to repeatedly assess the genetics and histology of lung cancers throughout their clinical course (6). Additional mechanisms include different pharmacokinetic and pharmacodynamic examples, such as central nervous system (CNS) specific progression related to poor drug distribution of several agents into the CNS compartment. The field is further complicated by the fact that these resistance mechanisms can co-exist, shift and change in a temporally and spatially dynamic manner over the course of the disease dependent on multiple factors, most critically the relevant ongoing selection pressure of targeted therapies.

### MET resistance mechanisms in other malignancies

#### *EGFR* inhibition in colorectal carcinomas

Multiple studies have demonstrated that *MET* amplification can occur in the setting of anti-*EGFR* monoclonal antibody therapy of advanced *KRAS* wild-type colorectal carcinoma (CRC). This setting differs from *EGFR*-mutated lung cancer in that the efficacy of anti-*EGFR* monoclonal antibodies in advanced CRC is limited, with progression usually occurring in 3–12 months. Additionally, there is no

specific genetic defect being targeted in this setting. For example, Van Emburgh and colleagues reported that *in vitro* stimulation of *MET* by HGF led to resistance in CRC cells and xenografts to cetuximab and panitumumab and 3 out of 7 patients with acquired resistance to *EGFR*-directed therapy were noted to have *MET* amplification (45). Pharmacological silencing of the *MET* pathway in preclinical models led to reconstitution of sensitivity.

#### *ErbB2*-positive malignancies

Limited data also suggest potential involvement of *MET*-mediated resistance with ErbB2-directed therapies. In a study conducted Minuti and colleagues, high gene copy numbers of *MET* and HGF correlated with poor outcomes and resistance to trastuzumab in HER2-positive breast cancers (46). Shattuck and colleagues demonstrated that trastuzumab-resistant primary cell lines and primary tumors also exhibited elevated expression of *MET* and HGF (47). Lastly, in ErbB2-positive gastric cancer models, *MET* activation and downstream ERK and AKT activation has been demonstrated to lead to resistance to the dual *EGFR*/*ErbB2* inhibitor, lapatinib (48). Physical association of *MET* and ErbB has also been demonstrated (49).

#### *FGFR*-driven cancers

In *FGFR1*-amplified lung cancer cell lines H1581 and DMS114, clones resistant to *FGFR* inhibitors AZD4547 and BAY116387 were established and RTK arrays showed overexpression and activation of *MET* with genomic *MET* amplification identified in some but not all clones (50). Resistance appeared to be mediated via ErbB3 activation. Combination therapy with crizotinib or *MET* siRNA re-sensitized cells while ectopic *MET* expression in H1581 cells led to resistance. Resistant clones also appeared to undergo epithelial-mesenchymal transitions with enhanced migration and invasion.

#### *BRAF*-mutated tumors

*MET* activation via stromal HGF secretions was identified by two groups as one of the alternate pathways associated with resistance to the *BRAF* inhibitor vemurafenib in melanoma (51,52). In addition, Krepler and colleagues reported on 12 patient-derived tumor xenograft (PDX) models established from *BRAF*-mutated melanomas upon progression on *BRAF* inhibitor therapy (53). Among

other changes detected by next-generation sequencing (Foundation One), *MET* amplification (copy number ranging from 9–63) was noted in 3 PDX models, and increased phosphorylated *MET* signal was detected in at least one of the PDX models in which capmatinib *MET* inhibitor therapy demonstrated success. Lastly, in a recent study of patients with *BRAF*-mutated CRC who initially responded to combined EGFR/*BRAF* inhibition with panitumumab and vemurafenib, *MET* amplification was noted in specimens from resistant tumors and the corresponding pre-treatment specimens were found to harbor pre-existing cells with *MET* amplification, suggestive of clonal expansion after therapy exposure (54). In CRC cell line models, ectopic *MET* expression led to resistance to *BRAF* inhibition that could be overcome by combination therapy. One index patient with *MET* amplification on crizotinib and vemurafenib had a rapid and marked clinical response, confirming the clinical impact of these findings. In the post-treatment sample of this patient, *MET* IHC showed strong expression in 90% of cells while *MET* copy numbers by FISH ranged from 1–30 (mean 8.5) with an overall *MET*/CEP7 ratio of 2.62 with at least 75% of cells harboring *MET* amplification.

### *VEGF pathway targeting*

In glioblastoma multiforme models, Jahangiri and colleagues conducted gene expression studies suggesting that in bevacizumab-resistant tumors, *MET* is one of the most overexpressed genes and that genetic ablation could reverse resistance and reduce tumor cell invasion and tumor cell survival (55). Other studies suggested that dual VEGFR and *MET* blockade reduces metastasis and improves survival in several preclinical models (56).

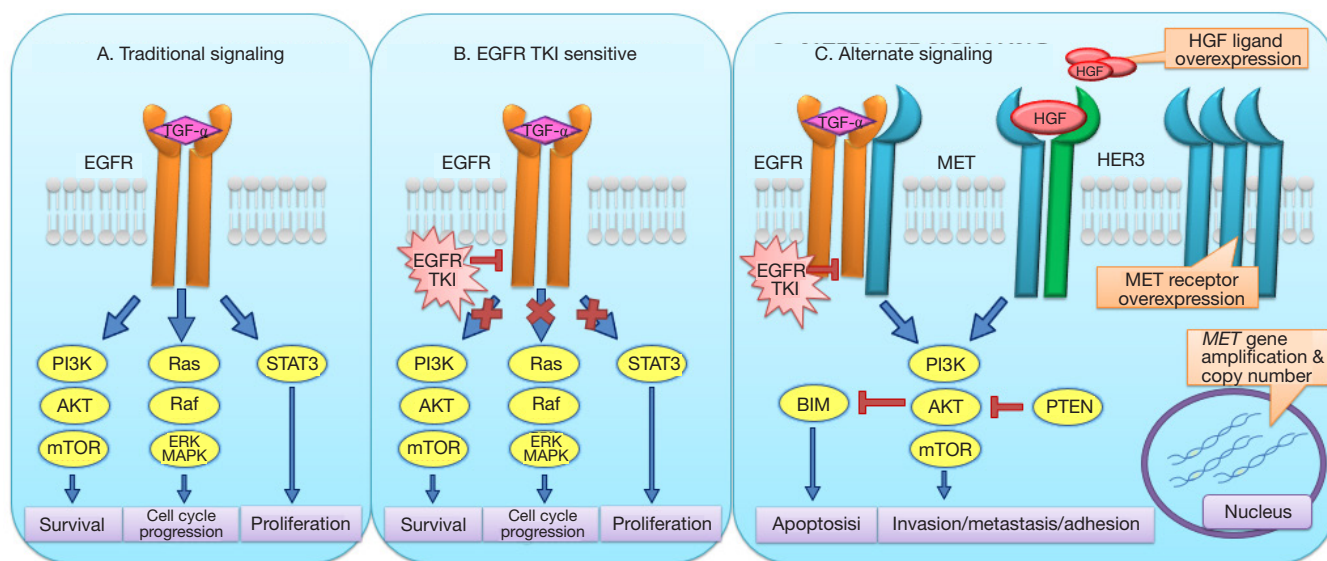
Overall, these various studies illustrate that activation of the *MET*/HGF axis is emerging as a key resistance mechanism in a large variety of clinical settings.

### **Biochemical mechanisms permitting *MET* to serve as a key bypass resistance kinase**

It is important to note that *MET* kinase activation functions in a broad variety of settings as a bypass resistance mechanism. Physiologically, the binding of HGF to *MET* induces its activation, driving a complex biologic program of invasive growth from the promotion of cell proliferation and cell invasion, and protection from apoptosis (16). *MET*-driven invasive growth is part of a physiological program

that occurs during embryonic development and during adulthood within the context of tissue regeneration. *MET*-mediated signaling results from pathways activated by the *MET* receptor but it can also be modulated by crosstalk between *MET* and different membrane receptors in complex interacting networks. The strength and duration of *MET*-induced signals are regulated by a network of co-receptors, such as adhesive receptors, death receptors, class B plexins, and other tyrosine kinase receptors that physically associate with *MET*. When it occurs, constitutive *MET* activation can contribute to several aspects of tumor progression by inducing neoplastic cells to disaggregate from the tumor mass, eroding basement membranes, infiltrating stromal matrices and eventually colonizing new tissues to form metastases (17).

The tumor microenvironment plays an essential role in sustaining resistance to targeted therapies as paracrine and autocrine tumor microenvironment-derived ligands can activate signals sufficient to overcome drug inhibition in tumor cells, especially in the case of HGF, the cognate ligand for *MET*. Gusenbauer and colleagues set out to investigate the underlying mechanism of HGF-induced EGFR TKI resistance in 12 distinct carcinoma cell lines derived from breast, kidney, liver and tongue (57). They demonstrated that HGF inhibits classical tyrosine kinase activity-dependent EGFR activation in a wide variety of carcinoma cell lines and induces EGFR to directly interact with and stabilize multiple potentially oncogenic proteins in multiprotein complexes, including the RTKs Axl and EphA2 as well as CUB domain-containing protein 1 (CDCP1), integrin  $\beta$ 4, and JAK1; all these putative EGFR binding partners were confirmed to co-immunoprecipitate with EGFR by immunoblotting. Within this cell surface multiprotein complex, EGFR signaling no longer depends on its kinase function and downstream signaling activation is independent of ATP binding, preventing inhibition by small molecule EGFR TKI monotherapy. This unique ability of *MET* to engage other cell surface oncogenic kinases and to yield alternative ways for downstream activation of oncogenic pathways can explain many of the observations noted in the *EGFR*-mutated lung cancer setting, the association of drug resistance with epithelial-mesenchymal transitions, and the wide involvement of *MET* bypass signaling in multiple cancer types. In addition, pretreatment with the *MET*-directed TKI AMG-458 fully restored gefitinib sensitivity and blocked HGF-induced cell scattering, further highlighting the role of HGF paracrine signaling and the HGF/*MET* axis in



**Figure 2** Schematic illustration of the unique biochemical aspects of MET-mediated bypass signaling driven by cell surface RTK aggregates leading to de-coupling of EGFR oncogenic function from its tyrosine kinase activity (alternate signaling).

EGFR TKI resistance.

To more comprehensively address the role of diverse cognate ligands for various oncogenic RTKs on TKI resistance, Harbinski and colleagues utilized high-throughput secretome screening in which secreted proteins collected from cell media supernatants of various cell lines transfected with a library of 3,432 cDNAs were assessed for their ability to rescue kinase-dependent cancer cells that were simultaneously treated with a corresponding kinase inhibitor (58). For example, HEK293T cells and MKN-45 cells were treated with JAA120, a MET inhibitor, and RT-112 cells were treated with BGJ398, a FGFR inhibitor. Interestingly, among multiple cytokines tested, HGF and FGF emerged as uniquely potent in rescuing cells from drug-induced apoptosis, including HGF for FGFR-sensitive cells and FGF and NRG2 for MET-sensitive cells, suggesting that kinase receptor bypass signaling is a broadly common mechanism of drug resistance. There was also simultaneous and synergistic activity of two RTKs observed, specifically MET and FGFR in combination. In a set of primary xenograft mouse models with MET and FGFR1 co-activation, the combination of capmatinib, an investigational MET inhibitor, and BGJ398, a pan FGFR kinase inhibitor, led to statistically significant and substantial tumor regression, suggesting that simultaneously blocking multiple distinct oncogenic kinase pathways is a

rational approach for overcoming resistance to single agent targeted therapy.

In summary, these data demonstrating involvement of MET in EMT-mediated resistance, potential to lead to RTK uncoupling via the generation of cell surface receptor aggregates and recognition as a key resistance signaling pathway in multiple model systems suggests a key role via unique mechanisms of broad plasticity, receptor engagement and alternative signaling for the MET/HGF axis in bypass resistance (*Figure 2*).

### Diagnostic biomarkers for MET pathway activation/targeting

As the role of MET pathway activation in the development of acquired resistance to targeted therapies becomes more fully appreciated, there is an increasingly urgent need for validated diagnostic biomarkers to effectively detect MET pathway activation. Given the dramatic clinical responses seen in selected patients treated with MET-directed therapy, detection of actionable *MET* alterations needs to be seamlessly incorporated into the clinical management of advanced NSCLC for upfront treatment selection and monitoring for the development of acquired resistance. Multiple methods exist for the detection of MET expression, MET activation, gene copy number



changes, and genomic alterations and may be able to serve as biomarkers for sensitivity to MET-targeted agents, facilitating prospective patient selection in the clinic (19). We will review the most relevant assays in the resistance setting below.

### Immunohistochemistry (IHC)

While MET IHC is a readily available and easily adoptable assay, its utility for MET targeting has been questioned by a series of recent studies, including multiple negative clinical studies which will be reviewed in detail below. The reason for the poor performance of MET IHC to predict treatment benefit might be related to limited correlation with genetic markers, such as *MET* exon 14 skipping or *MET* amplification which have emerged as much more robust biomarkers (59).

### Copy number assessment

For copy number changes, both fluorescence *in situ* hybridization (FISH) and real-time polymerase chain reaction (PCR) can detect increased copy numbers of *MET* reliably; however, real-time PCR lacks the ability to distinguish true genomic amplification from polysomy (18). Case reports suggest significant benefit of MET inhibition in tumors with high level *MET* gene amplification (60,61). Recent studies are starting to provide guidance for relevant MET FISH cutoffs to define patients with true sensitivity for MET inhibition. For example, in a study by Camidge and colleagues, 13 patients with *MET*-amplified NSCLC were treated with crizotinib and 6 patients out of the 13 had high level amplification (MET/CEP7 ratio greater than 5). For low, intermediate, and high MET/CEP7 ratios, objective response rates were 0%, 17%, and 67% respectively, suggesting that a MET/CEP7 ratio greater than or equal to 5 effectively identifies patients with high sensitivity for MET inhibition. Accordingly, the median duration of response was 15.7 weeks for patients with intermediate-level amplification compared to 73.6 weeks for patients with high-level amplification.

### Next-generation sequencing (NGS)

NGS has become a very powerful diagnostic tool in our diagnostic armamentarium for *MET* gene alterations, especially given the broad spectrum of mutations affecting the 5' and 3' splice sites of the *MET* gene that are hard

to capture using other methodologies (62,63). NGS has the advantage of providing comprehensive information on mutations, insertions/deletions, copy number changes, and gene fusions. Given the wide range of possible *MET* genomic alterations, NGS should be viewed as the leading and preferred diagnostic method currently.

### Plasma circulating tumor DNA (ctDNA) testing

ctDNA testing has become a valuable tool with validated utility for the detection of oncogenic and resistant *EGFR* mutations. Several test platforms also allow for NGS-based detection of multiple targets, including *MET* mutations and amplifications, and several ongoing studies have incorporated plasma ctDNA testing-based biomarkers for patient selection (38,64-66). While ctDNA testing has good sensitivity for point mutations, such as *MET* exon 14 skipping variants, it has less sensitivity for copy number changes. However, for high level amplifications, ctDNA testing might still be sufficient for relatively reliable detection and further studies in this rapidly developing area are eagerly awaited.

### Other biomarkers

As shown in multiple preclinical models, activation of MET can be assessed by the phosphorylation status of tyrosine residues in the kinase domain and/or the C-terminus tail. In pre- and post-treatment biopsies, changes in Met phosphorylation were observed in response to multiple distinct MET tyrosine kinase inhibitors, including tivantinib. Additionally, the phosphorylation of downstream effectors such as Gab1 and ERK can be used as surrogate pharmacodynamic indicators. Plasma biomarkers also hold promise, including HGF and shed-Met (shedding of the Met extracellular domain), VEGF, and soluble VEGFR2, though more prospective clinical trials are needed for validation (16).

Pre-treatment biopsies will be a top priority for prospective clinical trials for MET-directed therapies, as archived biopsies are less likely to capture critical information about *MET* status after treatment with drugs directed at other molecular targets (67). Although frequent biopsies, including pre- and post-treatment biopsies, are difficult to obtain in the context of clinical studies, they will be necessary to direct more rationally chosen targeted approaches (16). ctDNA testing will provide a convenient complement to such biomarker assays.

**Table 1** Summary of ongoing studies with MET inhibitors in the drug resistance setting

Study ID	Experimental drug	Drug class	Treatment combination	Phase	Patient population	Biomarker selection targets
NCT02468661	Capmatinib	MET TKI	Alone or with Erlotinib	II	Advanced EGFR-mutated NSCLC	EGFRm+, MET GCN >6
NCT02205398	Capmatinib	MET TKI	Cetuximab	I/II	Advanced Squamous Cell Carcinoma of Head and Neck, Metastatic Colorectal Cancer	K-Ras/N-Ras- CRC, cMet-positive (combination of IHC and FISH)
NCT01982955	Tepotinib (MSC2156119J)	MET TKI	Gefitinib	I/II	Advanced EGFR mutation+ NSCLC, failed prior EGFR TKI	EGFRm+, (ph II limited to MET IHC+, T790M-)
NCT02143466	Volitinib (AZD6094)	MET TKI	AZD9291	I/II	Advanced EGFR-mutation+ NSCLC, failed prior EGFR TKI	EGFRm+ (MET+ and T790M- for ph II)
NCT02260531	Cabozantinib	Multi-targeted TKI	Trastuzumab (if ErbB2+)	II	Breast cancer, metastatic brain disease	No biomarker selection
NCT01644773	Crizotinib	Multi-targeted TKI	Dasatinib	I	Diffuse intrinsic pontine glioma, high-grade glioma	No biomarker selection
NCT01900652	LY2875358	Anti-MET monoclonal antibody	Alone or with erlotinib	II	Advanced EGFR-mutation+ NSCLC, failed prior EGFR TKI	MET IHC+
NCT02318368	Ficlatuzumab	Anti-HGF monoclonal antibody	Erlotinib	II	Advanced EGFR-mutation+ NSCLC, EGFR TKI-naive	EGFRm+ and BDX004 positive

## Clinical studies assessing MET inhibition to potentiate the efficacy of targeted therapy

### Prior experience

Despite tremendous excitement about the utility of targeting MET for the treatment of NSCLC in a variety of settings, initial efforts were hampered by a series of major setbacks. Reviewing these failures provides context for the challenges of clinical study designs in this area. For example, there was a great deal of optimism for onartuzumab, a monovalent monoclonal antibody designed to specifically target the MET receptor, based on intriguing results of a preceding prominent phase II trial (68). This randomized phase II study demonstrated improved progression-free survival (2.9 vs. 1.5 months; HR =0.53; P=0.04) and overall survival (12.6 vs. 3.8 months; HR =0.37; P=0.002) for the onartuzumab plus erlotinib arm compared to the erlotinib plus placebo arm in the subset of patients with IHC-confirmed *MET*-positive non-small cell lung cancer patients (69). Unfortunately, the subsequent phase III METLung trial failed to show clinically meaningful efficacy for IHC-confirmed *MET*-positive patients and further development of onartuzumab in this setting was

halted. However, key shortcomings of this study included a molecularly unselected patient population where erlotinib is now understood to have very little clinical utility and the use of a poor biomarker, IHC for MET targeting, without consideration of more robust genetic biomarkers in treatment selection.

Tivantinib, another novel MET receptor TKI, was featured in a phase III multinational, randomized, double-blinded, and placebo-controlled study in patients with previously treated locally advanced or metastatic NSCLC. This study was also founded on encouraging randomized phase II study data (70). The tivantinib plus erlotinib combination modestly improved progression-free survival compared to the placebo plus erlotinib arm, but did not improve overall survival in the nonsquamous NSCLC population (71). *Post-hoc* subgroup analyses suggested an improvement in overall survival in patients with high *MET* expression, but statistical significance was not reached and further development of tivantinib in this setting is not currently being pursued. Similar to the phase II onartuzumab study, the lack of biomarker selection for EGFR targeting might have been a major flaw in retrospect and questions have been raised as to

whether tivantinib is actually a clinically relevant MET inhibitor.

### *MET TKI studies*

Learning from these drastic failures, more recent studies are much more focused on careful patient selection, enrolling only patients with *EGFR*-mutated NSCLCs with carefully defined acquired resistance to primary therapy. However, these scientifically cleaner studies suffer from much smaller patient numbers that are relevant for accrual based on stringent selection and the significant tissue needs for study eligibility. Currently, there are a multitude of clinical studies assessing MET inhibition with approved tyrosine kinase inhibitors with activity against MET such as crizotinib and cabozantinib, and with novel MET tyrosine kinase inhibitors. We have highlighted a few select studies below and have provided a more comprehensive list in *Table 1*.

Emerging clinical data suggest that MET TKIs in combination with an EGFR TKI may have a favorable benefit-risk ratio for the treatment of *cMET*-amplified, *EGFR* T790M negative advanced NSCLC with acquired resistance to prior EGFR TKI. INC280 (capmatinib) is an orally bioavailable, highly potent and selective cMET inhibitor (IC<sub>50</sub> = 0.13 nM) with greater than 10,000-fold selectivity for MET compared to other tested human kinases (72). Preliminary clinical activity of INC280 in combination with gefitinib was observed in adult patients with locally advanced or metastatic *EGFR*-mutated, *cMET*-dysregulated NSCLC who have progressed after EGFR TKI treatment. In particular, patients with a *cMET* gene copy number greater than or equal to 5 demonstrated an overall response rate of 40% (8/20) and 7 of these responders had a GCN greater than 6 (73). Based on these promising preliminary data, a randomized three-arm phase II study has been launched to compare INC280 versus erlotinib plus INC280 versus standard doublet chemotherapy in patients with *EGFR*-mutated NSCLC (NCT02468661). Key selection criteria include MET GCN greater than 6 for study entry.

A combination of INC280 and cetuximab is also being explored in *cMET*-positive metastatic colorectal cancer and head and neck squamous cell carcinoma following progression on prior EGFR monoclonal antibody therapy with cetuximab or panitumumab (NCT02205398). This phase IB dose escalation study will assess the toxicity and then efficacy of the combination at the expanded MTD/

RDE dose level. Selection criteria include cMET positivity as defined by IHC and FISH (similar to ErbB2 scoring criteria) as well as *KRAS* and *NRAS* wild type status for CRC patients.

Another ongoing study in this area assesses the safety and utility of the highly potent and selective MET TKI inhibitor, tepotinib (MSC2156119J) along with gefitinib in patients with *MET*-positive advanced *EGFR*-mutated NSCLC who failed prior gefitinib (NCT01982955). The phase IB portion of the study was presented at ASCO 2016 demonstrating good tolerability (no DLTs noted in two dose levels) and encouraging initial activity (4/18 partial responses) of the combination (74) and the recommended phase II dose of tepotinib at 500 mg PO once daily with gefitinib at 250 mg PO once daily is now being studied in the randomized phase II portion limited to *MET*-positive and *EGFR* T790M-negative patients with cisplatin/pemetrexed chemotherapy serving as the control arm. c-Met positivity (2+ or 3+) in this study is determined by IHC using an anti-c-Met monoclonal antibody (SP44; Ventana/Roche).

Another very potent and selective MET inhibitor in active development is volitinib (HMPL-504), an orally bioavailable and potent small molecule ATP-competitive inhibitor with single nanomolar activity and at least 200-fold selectivity for MET kinase inhibition over 247 tested kinases. One ongoing study in China (NCT02374645) is assessing the safety of the combination of gefitinib and volitinib in advanced *EGFR*-mutated NSCLC. The TATTON clinical study (NCT02143466) is exploring different combinations of the T790M-targeting EGFR inhibitor osimertinib in different combinations, including volitinib, in patients with *EGFR*-mutated NSCLC upon progression on prior EGFR TKI therapy. In a rolling phase IB dose escalation design, the combination of osimertinib and volitinib appeared to have encouraging activity and was escalated to phase 2 following treatment of 12 patients at two dose levels of volitinib (600 and 800 mg PO once daily) with a set dose of osimertinib of 80 mg PO once daily (75). Partial responses were reported in 6 of 11 evaluable patients with 4 of the responses confirmed, including a major response in a 32-year-old female with an *EGFR* exon 19 deletion positive NSCLC with documented high *MET*-amplification positive disease progression.

A phase I study of glesatinib (MGCD265), a potent and highly selective tyrosine kinase inhibitor with predominant activity against MET and AXL has been completed (76). Subsequent phase Ib data revealed clinical activity with durable confirmed partial responses in 3 out of 11 NSCLC patients and tumor regressions in 10 out of 11 NSCLC

patients, but bioavailability and tolerability issues prompted the use of a new formulation of glesatinib for the currently ongoing phase II trial (NCT02544633). One of the reported responses to single agent MGCD265 involved a patient with a *MET* amplification positive, *EGFR*-mutated advanced NSCLC.

A study focusing on breast cancer patients with CNS metastases is assessing the utility of MET inhibition with cabozantinib in this setting alone or in combination with trastuzumab in ErbB2-positive patients (NCT02260531), utilizing a range of correlative biomarkers including levels and changes in serum MET as well as MET and phosphorylated MET by IHC in available archival tissues (NCT02260531).

Another intriguing study is exploring the combination of PDGFRA and MET inhibition in pediatric brain tumors based on frequent genetic alterations affecting both pathways as well as recent data highlighting genetic heterogeneity in clonal subpopulations suggestive of synergistic value to such combinations. This phase I study assessing the combination of crizotinib and dasatinib found that the combination was too toxic at twice daily dosing and now is accruing patients at once daily dosing cohorts (NCT01644773).

#### *Anti-MET monoclonal antibodies*

Another relevant agent being developed in this space is the humanized, bivalent, IgG4 monoclonal antibody LY2875358. It is unique by not exhibiting any functional agonist activity, and it potently blocks HGF binding to MET and HGF-induced MET phosphorylation and cell proliferation. In addition, it also induces MET receptor internalization and degradation and has shown activity in both HGF-dependent and HGF-independent (such as MET-amplified) model systems (77). Initial studies showed good tolerability of this antibody and a randomized phase II study that recently completed accrual will assess single agent LY2875358 and a combination of erlotinib and LY2875358 in patients with advanced *EGFR*-mutated NSCLC with MET biomarker positive tumors upon progression on prior *EGFR* TKI therapy (NCT01900652). Results presented in abstract form suggest limited activity of single-agent anti-MET antibody therapy or the combination for the overall population of MET diagnostic positive patients, defined by MET IHC positivity. Since close to 90% of enrolled patients were found to be positive by MET IHC, further results are awaited in more rigorously defined *MET*-positive patient subsets (78).

#### *Anti-HGF monoclonal antibodies*

Ficlatuzumab (AV-299) is a potent, high affinity and selective HGF-inhibitory antibody developed to inhibit HGF/MET-driven biological activities (79). A phase II study of ficlatuzumab and erlotinib versus placebo and erlotinib (FOCAL study, NCT02318368) is ongoing to assess the value of combined inhibition in patients with *EGFR*-mutated, *EGFR* TKI-naïve advanced NSCLC. One key eligibility criteria is positivity for the serum proteomic marker, BDX004. Similar to Veristrat, this defines a patient population with poor prognosis.

#### Summary

Overall, the emerging data puts the HGF/MET signaling axis front and center as a leading example of bypass resistance to a broad spectrum of targeted therapeutics in a variety of clinical settings. Activation of MET signaling represents a unique set of resistance mechanisms to targeted therapies because it can occur through multiple and varied molecular events including genomic amplification and ligand overexpression, leading to rapid evolution of drug resistance. It also provides a paradigm of clonal evolution and selection. The ability of overexpressed MET to form cell surface tyrosine kinase aggregates is a key mechanism for its role in EMT as well as drug resistance via bypass and alternative signaling pathways. In the case of *EGFR*-mutated lung adenocarcinoma, a wide range of models from preclinical studies to well-annotated case reports suggest true actionability of *MET* amplification as a resistance mechanism. *MET* amplification detected by a variety of platforms might be the leading biomarker for ongoing *EGFR*-mutated NSCLC studies. A wide range of clinical studies exploring small molecule as well as monoclonal antibody *MET* inhibition approaches in diverse clinical settings should be greatly supported by our larger oncology community to enable us to fully validate *MET* inhibition in these clinical contexts.

#### Acknowledgements

None.

#### Footnote

*Conflicts of Interest:* The authors have no conflicts of interest to declare.

## References

- Chong CR, Janne PA. The quest to overcome resistance to EGFR-targeted therapies in cancer. *Nat Med* 2013;19:1389-400.
- D'Angelo SP, Pietanza MC, Johnson ML, et al. Incidence of EGFR exon 19 deletions and L858R in tumor specimens from men and cigarette smokers with lung adenocarcinomas. *J Clin Oncol* 2011;29:2066-70.
- Camidge DR, Pao W, Sequist LV. Acquired resistance to TKIs in solid tumours: learning from lung cancer. *Nat Rev Clin Oncol* 2014;11:473-81.
- Kobayashi S, Boggon TJ, Dayaram T, et al. EGFR mutation and resistance of non-small-cell lung cancer to gefitinib. *N Engl J Med* 2005;352:786-92.
- Bell DW, Gore I, Okimoto RA, et al. Inherited susceptibility to lung cancer may be associated with the T790M drug resistance mutation in EGFR. *Nat Genet* 2005;37:1315-6.
- Sequist LV, Waltman BA, Dias-Santagata D, et al. Genotypic and histological evolution of lung cancers acquiring resistance to EGFR inhibitors. *Sci Transl Med* 2011;3:75ra26.
- Hata AN, Niederst MJ, Archibald HL, et al. Tumor cells can follow distinct evolutionary paths to become resistant to epidermal growth factor receptor inhibition. *Nat Med* 2016;22:262-9.
- Jänne PA, Yang JC, Kim DW, et al. AZD9291 in EGFR inhibitor-resistant non-small-cell lung cancer. *N Engl J Med* 2015;372:1689-99.
- Gainor JF, Dardaei L, Yoda S, et al. Molecular Mechanisms of Resistance to First- and Second-Generation ALK Inhibitors in ALK-Rearranged Lung Cancer. *Cancer Discov* 2016;6:1118-33.
- Katayama R, Shaw AT, Khan TM, et al. Mechanisms of acquired crizotinib resistance in ALK-rearranged lung Cancers. *Sci Transl Med* 2012;4:120ra17.
- Bauer S, Joensuu H. Emerging Agents for the Treatment of Advanced, Imatinib-Resistant Gastrointestinal Stromal Tumors: Current Status and Future Directions. *Drugs* 2015;75:1323-34.
- O'Hare T, Deininger MW, Eide CA, et al. Targeting the BCR-ABL signaling pathway in therapy-resistant Philadelphia chromosome-positive leukemia. *Clin Cancer Res* 2011;17:212-21.
- Costa DB, Halmos B, Kumar A, et al. BIM mediates EGFR tyrosine kinase inhibitor-induced apoptosis in lung cancers with oncogenic EGFR mutations. *PLoS Med* 2007;4:1669-79; discussion 1680.
- Kobayashi S, Shimamura T, Monti S, et al. Transcriptional profiling identifies cyclin D1 as a critical downstream effector of mutant epidermal growth factor receptor signaling. *Cancer Res* 2006;66:11389-98.
- Corso S, Giordano S. Cell-autonomous and non-cell-autonomous mechanisms of HGF/MET-driven resistance to targeted therapies: from basic research to a clinical perspective. *Cancer Discov* 2013;3:978-92.
- Maroun CR, Rowlands T. The Met receptor tyrosine kinase: a key player in oncogenesis and drug resistance. *Pharmacol Ther* 2014;142:316-38.
- Ma PC, Maulik G, Christensen J, et al. c-Met: structure, functions and potential for therapeutic inhibition. *Cancer Metastasis Rev* 2003;22:309-25.
- Gelsomino F, Facchinetti F, Haspinger ER, et al. Targeting the MET gene for the treatment of non-small-cell lung cancer. *Crit Rev Oncol Hematol* 2014;89:284-99.
- Furlan A, Kherrouche Z, Montagne R, Copin MC, Tulasne D. Thirty years of research on met receptor to move a biomarker from bench to bedside. *Cancer Res* 2014;74:6737-44.
- Christensen JG, Burrows J, Salgia R. c-Met as a target for human cancer and characterization of inhibitors for therapeutic intervention. *Cancer Lett* 2005;225:1-26.
- Ma PC, Tretiakova MS, MacKinnon AC, Ramnath N, Johnson C, Dietrich S, et al. Expression and mutational analysis of MET in human solid cancers. *Genes Chromosomes Cancer* 2008;47:1025-37.
- Rastogi I, Rajanna S, Webb A, et al. Mechanism of c-Met and EGFR tyrosine kinase inhibitor resistance through epithelial mesenchymal transition in non-small cell lung cancer. *Biochem Biophys Res Commun* 2016;477:937-44.
- Kitajima Y, Ide T, Ohtsuka T, et al. Induction of hepatocyte growth factor activator gene expression under hypoxia activates the hepatocyte growth factor/c-Met system via hypoxia inducible factor-1 in pancreatic cancer. *Cancer Sci* 2008;99:1341-7.
- Pennacchiotti S, Michieli P, Galluzzo M, et al. Hypoxia promotes invasive growth by transcriptional activation of the met protooncogene. *Cancer Cell* 2003;3:347-61.
- Ma PC, Jagadeeswaran R, Jagadeesh S, et al. Functional expression and mutations of c-Met and its therapeutic inhibition with SU11274 and small interfering RNA in non-small cell lung cancer. *Cancer Res* 2005;65:1479-88.
- Awad MM, Oxnard GR, Jackman DM, et al. MET Exon 14 Mutations in Non-Small-Cell Lung Cancer Are Associated With Advanced Age and Stage-Dependent

- MET Genomic Amplification and c-Met Overexpression. *J Clin Oncol* 2016;34:721-30.
27. Paik PK, Drilon A, Fan PD, et al. Response to MET inhibitors in patients with stage IV lung adenocarcinomas harboring MET mutations causing exon 14 skipping. *Cancer Discov* 2015;5:842-9.
  28. Liu X, Jia Y, Stoopler MB, et al. Next-Generation Sequencing of Pulmonary Sarcomatoid Carcinoma Reveals High Frequency of Actionable MET Gene Mutations. *J Clin Oncol* 2016;34:794-802.
  29. Engelman JA, Zejnullahu K, Mitsudomi T, et al. MET amplification leads to gefitinib resistance in lung cancer by activating ERBB3 signaling. *Science* 2007;316:1039-43.
  30. Qi J, McTigue MA, Rogers A, et al. Multiple mutations and bypass mechanisms can contribute to development of acquired resistance to MET inhibitors. *Cancer Res* 2011;71:1081-91.
  31. Bean J, Brennan C, Shih JY, et al. MET amplification occurs with or without T790M mutations in EGFR mutant lung tumors with acquired resistance to gefitinib or erlotinib. *Proc Natl Acad Sci U S A* 2007;104:20932-7.
  32. Yu HA, Arcila ME, Rekhtman N, et al. Analysis of tumor specimens at the time of acquired resistance to EGFR-TKI therapy in 155 patients with EGFR-mutant lung cancers. *Clin Cancer Res* 2013;19:2240-7.
  33. Gainor JF, Niederst MJ, Lennerz JK, et al. Dramatic Response to Combination Erlotinib and Crizotinib in a Patient with Advanced, EGFR-Mutant Lung Cancer Harboring De Novo MET Amplification. *J Thorac Oncol* 2016;11:e83-5.
  34. Womack JP, Varella-Garcia M, Camidge DR. Waxing and Waning of MET Amplification in EGFR-Mutated NSCLC in Response to the Presence and Absence of Erlotinib Selection Pressure. *J Thorac Oncol* 2015;10:e115-8.
  35. Shi P, Oh YT, Zhang G, et al. Met gene amplification and protein hyperactivation is a mechanism of resistance to both first and third generation EGFR inhibitors in lung cancer treatment. *Cancer Lett* 2016;380:494-504.
  36. Thress KS, Paweletz CP, Felip E, et al. Acquired EGFR C797S mutation mediates resistance to AZD9291 in non-small cell lung cancer harboring EGFR T790M. *Nat Med* 2015;21:560-2.
  37. Ou SH, Agarwal N, Ali SM. High MET amplification level as a resistance mechanism to osimertinib (AZD9291) in a patient that symptomatically responded to crizotinib treatment post-osimertinib progression. *Lung Cancer* 2016;98:59-61.
  38. Chabon JJ, Simmons AD, Lovejoy AF, et al. Circulating tumour DNA profiling reveals heterogeneity of EGFR inhibitor resistance mechanisms in lung cancer patients. *Nat Commun* 2016;7:11815.
  39. Turke AB, Zejnullahu K, Wu YL, et al. Preexistence and clonal selection of MET amplification in EGFR mutant NSCLC. *Cancer Cell* 2010;17:77-88.
  40. Donev IS, Wang W, Yamada T, et al. Transient PI3K inhibition induces apoptosis and overcomes HGF-mediated resistance to EGFR-TKIs in EGFR mutant lung cancer. *Clin Cancer Res* 2011;17:2260-9.
  41. Yano S, Wang W, Li Q, et al. Hepatocyte growth factor induces gefitinib resistance of lung adenocarcinoma with epidermal growth factor receptor-activating mutations. *Cancer Res* 2008;68:9479-87.
  42. Tanaka H, Kimura T, Kudoh S, et al. Reaction of plasma hepatocyte growth factor levels in non-small cell lung cancer patients treated with EGFR-TKIs. *Int J Cancer* 2011;129:1410-6.
  43. Zhang Z, Lee JC, Lin L, et al. Activation of the AXL kinase causes resistance to EGFR-targeted therapy in lung cancer. *Nat Genet* 2012;44:852-60.
  44. Takezawa K, Pirazzoli V, Arcila ME, et al. HER2 amplification: a potential mechanism of acquired resistance to EGFR inhibition in EGFR-mutant lung cancers that lack the second-site EGFR T790M mutation. *Cancer Discov* 2012;2:922-33.
  45. Van Emburgh BO, Sartore-Bianchi A, Di Nicolantonio F, et al. Acquired resistance to EGFR-targeted therapies in colorectal cancer. *Mol Oncol* 2014;8:1084-94.
  46. Minuti G, Cappuzzo F, Duchnowska R, et al. Increased MET and HGF gene copy numbers are associated with trastuzumab failure in HER2-positive metastatic breast cancer. *Br J Cancer* 2012;107:793-9.
  47. Shattuck DL, Miller JK, Carraway KL, 3rd, et al. Met receptor contributes to trastuzumab resistance of Her2-overexpressing breast cancer cells. *Cancer Res* 2008;68:1471-7.
  48. Chen CT, Kim H, Liska D, et al. MET activation mediates resistance to lapatinib inhibition of HER2-amplified gastric cancer cells. *Mol Cancer Ther* 2012;11:660-9.
  49. Agarwal S, Zerillo C, Kolmakova J, et al. Association of constitutively activated hepatocyte growth factor receptor (Met) with resistance to a dual EGFR/Her2 inhibitor in non-small-cell lung cancer cells. *Br J Cancer* 2009;100:941-9.
  50. Kim SM, Kim H, Yun MR, et al. Activation of the Met kinase confers acquired drug resistance in FGFR-targeted lung cancer therapy. *Oncogenesis* 2016;5:e241.

51. Wilson TR, Fridlyand J, Yan Y, et al. Widespread potential for growth-factor-driven resistance to anticancer kinase inhibitors. *Nature* 2012;487:505-9.
52. Straussman R, Morikawa T, Shee K, et al. Tumour micro-environment elicits innate resistance to RAF inhibitors through HGF secretion. *Nature* 2012;487:500-4.
53. Krepler C, Xiao M, Sproesser K, et al. Personalized Preclinical Trials in BRAF Inhibitor-Resistant Patient-Derived Xenograft Models Identify Second-Line Combination Therapies. *Clin Cancer Res* 2016;22:1592-602.
54. Pietrantonio F, Oddo D, Gloghini A, et al. MET-Driven Resistance to Dual EGFR and BRAF Blockade May Be Overcome by Switching from EGFR to MET Inhibition in BRAF-Mutated Colorectal Cancer. *Cancer Discov* 2016;6:963-71.
55. Jahangiri A, De Lay M, Miller LM, et al. Gene expression profile identifies tyrosine kinase c-Met as a targetable mediator of antiangiogenic therapy resistance. *Clin Cancer Res* 2013;19:1773-83.
56. Nakagawa T, Matsushima T, Kawano S, et al. Lenvatinib in combination with golvatinib overcomes hepatocyte growth factor pathway-induced resistance to vascular endothelial growth factor receptor inhibitor. *Cancer Sci* 2014;105:723-30.
57. Gusenbauer S, Vlaicu P, Ullrich A. HGF induces novel EGFR functions involved in resistance formation to tyrosine kinase inhibitors. *Oncogene* 2013;32:3846-56.
58. Harbinski F, Craig VJ, Sanghavi S, et al. Rescue screens with secreted proteins reveal compensatory potential of receptor tyrosine kinases in driving cancer growth. *Cancer Discov* 2012;2:948-59.
59. Borczuk A, Paucar D, Halmos B. Has MET met its match? *Ann Transl Med* 2016;4:97.
60. Ou SH, Kwak EL, Siwak-Tapp C, et al. Activity of crizotinib (PF02341066), a dual mesenchymal-epithelial transition (MET) and anaplastic lymphoma kinase (ALK) inhibitor, in a non-small cell lung cancer patient with de novo MET amplification. *J Thorac Oncol* 2011;6:942-6.
61. Schwab R, Petak I, Kollar M, et al. Major partial response to crizotinib, a dual MET/ALK inhibitor, in a squamous cell lung (SCC) carcinoma patient with de novo c-MET amplification in the absence of ALK rearrangement. *Lung Cancer* 2014;83:109-11.
62. Frampton GM, Ali SM, Rosenzweig M, et al. Activation of MET via diverse exon 14 splicing alterations occurs in multiple tumor types and confers clinical sensitivity to MET inhibitors. *Cancer Discov* 2015;5:850-9.
63. Schrock AB, Frampton GM, Suh J, et al. Characterization of 298 Patients with Lung Cancer Harboring MET Exon 14 Skipping Alterations. *J Thorac Oncol* 2016;11:1493-502.
64. Schwaederle M, Husain H, Fanta PT, et al. Detection rate of actionable mutations in diverse cancers using a biopsy-free (blood) circulating tumor cell DNA assay. *Oncotarget* 2016;7:9707-17.
65. Villaflor V, Won B, Nagy R, et al. Biopsy-free circulating tumor DNA assay identifies actionable mutations in lung cancer. *Oncotarget* 2016. [Epub ahead of print].
66. Sorber L, Zwaenepoel K, Deschoolmeester V, et al. Circulating cell-free nucleic acids and platelets as a liquid biopsy in the provision of personalized therapy for lung cancer patients. *Lung Cancer* 2016. pii: S0169-5002(16)30312-9.
67. Ma PC. MET receptor juxtamembrane exon 14 alternative spliced variant: novel cancer genomic predictive biomarker. *Cancer Discov* 2015;5:802-5.
68. Spigel DR, Edelman MJ, Mok T, et al. Treatment Rationale Study Design for the MetLung Trial: A Randomized, Double-Blind Phase III Study of Onartuzumab (MetMab) in Combination With Erlotinib Versus Erlotinib Alone in Patients Who Have Received Standard Chemotherapy for Stage IIIB or IV Met-Positive Non-Small-Cell Lung Cancer. *Clin Lung Cancer* 2012;13:500-4.
69. Spigel DR, Ervin TJ, Ramlau RA, et al. Randomized phase II trial of Onartuzumab in combination with erlotinib in patients with advanced non-small-cell lung cancer. *J Clin Oncol* 2013;31:4105-14.
70. Sequist LV, von Pawel J, Garmey EG, et al. Randomized phase II study of erlotinib plus tivantinib versus erlotinib plus placebo in previously treated non-small-cell lung cancer. *J Clin Oncol* 2011;29:3307-15.
71. Scagliotti G, von Pawel J, Novello S, et al. Phase III Multinational, Randomized, Double-Blind, Placebo-Controlled Study of Tivantinib (ARQ 197) Plus Erlotinib Versus Erlotinib Alone in Previously Treated Patients With Locally Advanced or Metastatic Nonsquamous Non-Small-Cell Lung Cancer. *J Clin Oncol* 2015;33:2667-74.
72. Liu X, Wang Q, Yang G, et al. A novel kinase inhibitor, INCB28060, blocks c-MET-dependent signaling, neoplastic activities, and cross-talk with EGFR and HER-3. *Clin Cancer Res* 2011;17:7127-38.
73. Wu YL, Yang JC, Kim DW, et al. Safety and efficacy of INC280 in combination with gefitinib (gef) in patients with EGFR-mutated (mut), MET-positive NSCLC: A single-arm phase Ib/II study. *J Clin Oncol* 2014;35:abstr 8017.
74. Wu YL, Soo RA, Kim DW, et al. Tolerability, efficacy

- and recommended phase II dose (RP2D) of tepotinib plus gefitinib in Asian patients with c-Met-positive/EGFR-mutant NSCLC: Phase Ib data. *J Clin Oncol* 2016;34:abstr e20501.
75. Oxnard GR, Ramalingam SS, Ahn MJ, et al. Preliminary results of TATTON, a multi-arm phase Ib trial of AZD9291 combined with MEDI4736, AZD6094 or selumetinib in EGFR-mutant lung cancer. *J Clin Oncol* 2015;33:abstr 2509.
  76. Kollmannsberger CK, Sharma S, Shapiro G, et al. Phase I study of receptor tyrosine kinase (RTK) inhibitor, MGCD265, in patients (pts) with advanced solid tumors. *J Clin Oncol* 2015;33:abstr 2589.
  77. Yoh K, Doi T, Ohmatsu H, et al. A phase I dose-escalation study of LY2875358, a bivalent MET antibody, given as monotherapy or in combination with erlotinib or gefitinib in Japanese patients with advanced malignancies. *Invest New Drugs* 2016;34:584-95.
  78. Camidge DR, Moran T, Demedts I, et al. A randomized, open-label, phase 2 study of emibetuzumab plus erlotinib (LY+E) and emibetuzumab monotherapy (LY) in patients with acquired resistance to erlotinib and MET diagnostic positive (MET Dx+) metastatic NSCLC. *J Clin Oncol* 2016;34:abstr 9070.
  79. Patnaik A, Weiss GJ, Papadopoulos KP, et al. Phase I ficlatuzumab monotherapy or with erlotinib for refractory advanced solid tumours and multiple myeloma. *Br J Cancer* 2014;111:272-80.

**Cite this article as:** Ko B, He T, Gadgeel S, Halmos B. MET/HGF pathway activation as a paradigm of resistance to targeted therapies. *Ann Transl Med* 2017;5(1):4. doi: 10.21037/atm.2016.12.09