

REVIEW

Open Access



Meta-evaluation of meta-analysis: ten appraisal questions for biologists

Shinichi Nakagawa^{1,2*}, Daniel W. A. Noble¹, Alistair M. Senior^{3,4} and Malgorzata Lagisz¹

Abstract

Meta-analysis is a statistical procedure for analyzing the combined data from different studies, and can be a major source of concise up-to-date information. The overall conclusions of a meta-analysis, however, depend heavily on the quality of the meta-analytic process, and an appropriate evaluation of the quality of meta-analysis (meta-evaluation) can be challenging. We outline ten questions biologists can ask to critically appraise a meta-analysis. These questions could also act as simple and accessible guidelines for the authors of meta-analyses. We focus on meta-analyses using non-human species, which we term 'biological' meta-analysis. Our ten questions are aimed at enabling a biologist to evaluate whether a biological meta-analysis embodies 'mega-enlightenment', a 'mega-mistake', or something in between.

Keywords: Effect size, Biological importance, Non-independence, Meta-regression, Meta-research, Publication bias, Quantitative synthesis, Reporting bias, Statistical significance, Systematic review

Meta-analyses can be important and informative, but are they all?

Last year saw 40 years since the coining of the term 'meta-analysis' by Gene Glass in 1976 [1, 2]. Meta-analyses, in which data from multiple studies are combined to evaluate an overall effect, or effect size, were first introduced to the medical and social sciences, where humans are the main species of interest [3–5]. Decades later, meta-analysis has infiltrated different areas of

biological sciences [6], including ecology, evolutionary biology, conservation biology, and physiology. Here non-human species, or even ecosystems, are the main focus [7–12]. Despite this somewhat later arrival, interest in meta-analysis has been rapidly increasing in biological sciences. We have argued that the remarkable surge in interest over the last several years may indicate that meta-analysis is superseding traditional (narrative) reviews as a more objective and informative way of summarizing biological topics [8].

It is likely that the majority of us (biologists) have never conducted a meta-analysis. Chances are, however, that almost all of us have read at least one. Meta-analysis can not only provide quantitative information (such as overall effects and consistency among studies), but also qualitative information (such as dominant research trends and current knowledge gaps). In contrast to that of many medical and social scientists [3, 5], the training of a biologist does not typically include meta-analysis [13] and, consequently, it may be difficult for a biologist to evaluate and interpret a meta-analysis. As with original research studies, the quality of meta-analyses vary immensely. For example, recent reviews have revealed that many meta-analyses in ecology and evolution miss, or perform poorly, several critical steps that are routinely implemented in the medical and social sciences [14, 15] (but also see [16, 17]).

The aim of this review is to provide ten appraisal questions that one should ask when reading a meta-analysis (cf., [18, 19]), although these questions could also be used as simple and accessible guidelines for researchers conducting meta-analyses. In this review, we only deal with 'narrow sense' or 'formal' meta-analyses, where a statistical model is used to combine common effect sizes across studies, and the model takes into account sampling error, which is a function of sample size upon which each effect size is based (more details below; for discussions on the definitions of meta-analysis, see [15, 20, 21]). Further, our emphasis is on 'biological' meta-analyses, which deal with non-human species, including model organisms (nematodes, fruit flies, mice, and rats [22]) and non-model

* Correspondence: s.nakagawa@unsw.edu.au

All authors contributed equally to the preparation of this manuscript

¹Evolution & Ecology Research Centre and School of Biological, Earth and Environmental Sciences, University of New South Wales, Sydney, NSW 2052, Australia

²Diabetes and Metabolism Division, Garvan Institute of Medical Research, 384 Victoria Street, Darlinghurst, Sydney, NSW 2010, Australia

Full list of author information is available at the end of the article



organisms, multiple species, or even entire ecosystems. For medical and social science meta-analyses concerning human subjects, large bodies of literature and excellent guidelines already exist, especially from overseeing organizations such as the Cochrane (Collaboration) and the Campbell Collaboration. We refer to the literature and the practices from these ‘experienced’ disciplines where appropriate. An overview and roadmap of this review is presented in Fig. 1. Clearly, we cannot cover all details, but we cite key references in each section so that interested readers can follow up.

Q1: Is the search systematic and transparently documented?

When we read a biological meta-analysis, it used to be (and probably still is) common to see a statement like “a comprehensive search of the literature was conducted” without mention of the date and type of databases the authors searched. Documentation on keyword strings and inclusion criteria is often also very poor, making replication of search outcomes difficult or impossible.

Superficial documentation also makes it hard to tell whether the search really was comprehensive, and, more importantly, systematic.

A comprehensive search attempts to identify (almost) all relevant studies/data for a given meta-analysis, and would thus not only include multiple major databases for finding published studies, but also make use of various lesser-known databases to locate reports and unpublished studies. Despite the common belief that search results should be similar among major databases, overlaps can sometimes be only moderate. For example, overlap in search results between *Web of Science* and *Scopus* (two of the most popular academic databases) is only 40–50% in many major fields [23]. As well as reading that a search is comprehensive, it is not uncommon to read that a search was systematic. A systematic search needs to follow a set of pre-determined protocols aimed at minimizing bias in the resulting data set. For example, a search of a single database, with pre-defined focal questions, search strings, and inclusion/exclusion criteria, can be considered systematic, negating some bias,

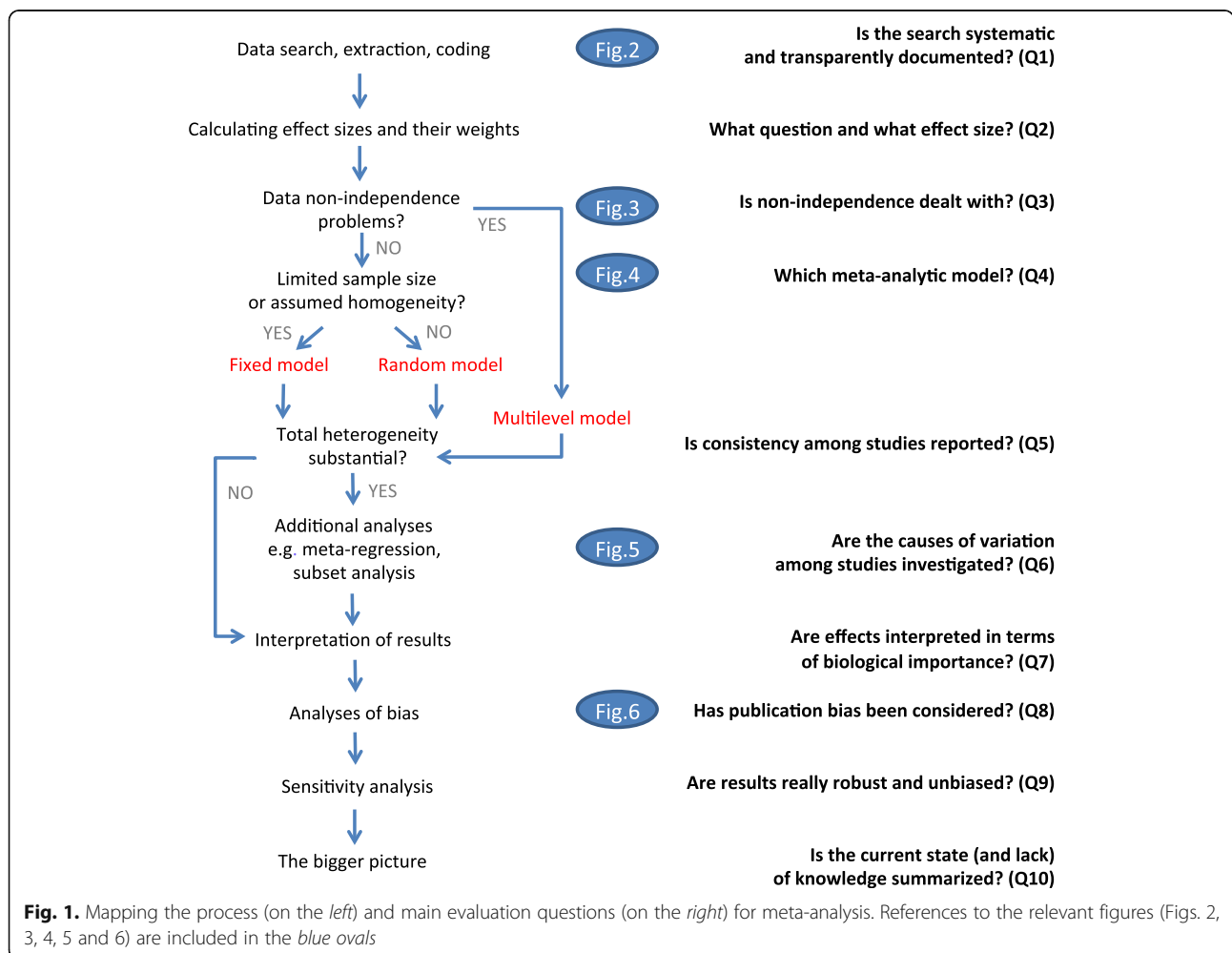


Fig. 1. Mapping the process (on the left) and main evaluation questions (on the right) for meta-analysis. References to the relevant figures (Figs. 2, 3, 4, 5 and 6) are included in the blue ovals

though not necessarily being comprehensive. It is notable that a comprehensive search is preferable but not necessary (and often very difficult to do) whereas a systematic search is a must [24].

For most meta-analyses in medicine and social sciences, the search steps are systematic and well documented for reproducibility. This is because these studies follow a protocol named the PRISMA (Preferred Reporting Items for Systematic Reviews and Meta-Analyses) statement [25, 26]; note that a meta-analysis should usually be a part of a systematic review, although a systematic review may or may not include meta-analysis. The PRISMA statement facilitates transparency in reporting meta-analytic studies. Although it was developed for health sciences, we believe that the details of the four key elements of the PRISMA flow diagram ('identification', 'screening', 'eligibility', and 'included') should also be reported in a biological meta-analysis [8]. Figure 2 shows: A) the key ideas of the PRISMA statement, which the reader should compare with the content of a biological meta-analysis; and B) an example of a PRISMA diagram, which should be included as part of meta-analysis documentation. The bottom line is that one should assess whether search and screening procedures are reproducible and systematic (if not comprehensive; to minimize potential bias), given what is described in the meta-analytic paper [27, 28].

Q2: What question and what effect size?

A meta-analysis should not just be descriptive. The best meta-analyses ask questions or test hypotheses, as is the case with original research. The meta-analytic questions and hypotheses addressed will generally determine the types of effect size statistics the authors use [29–32], as we explain below. Three broad groups of effect size statistics are based on are: 1) the difference between the means of two groups (for example, control versus treatment); 2) the relationship, or correlation, between two variables; and 3) the incidence of two outcomes (for example, dead or alive) in two groups (often represented in a 2 by 2 contingency table); see [3, 7] for comprehensive lists of effect size statistics. Corresponding common effect size statistics are: 1) standardized mean difference (SMD; often referred to as d , Cohen's d , Hedges' d or Hedges' g) and the natural logarithm (log) of the response ratio (denoted as either $\ln R$ or $\ln RR$ [33]); 2) Fisher's z -transformed correlation coefficient (often denoted as Zr); and 3) the natural logarithm of the odds ratio ($\ln OR$) and relative risk ($\ln RR$; not to be confused with the response ratio).

We have also used and developed methods associated with less common effect size statistics such as log hazard ratio ($\ln HR$) for comparing survival curves [34–37], and also the log coefficient of variation ratio ($\ln CVR$) for

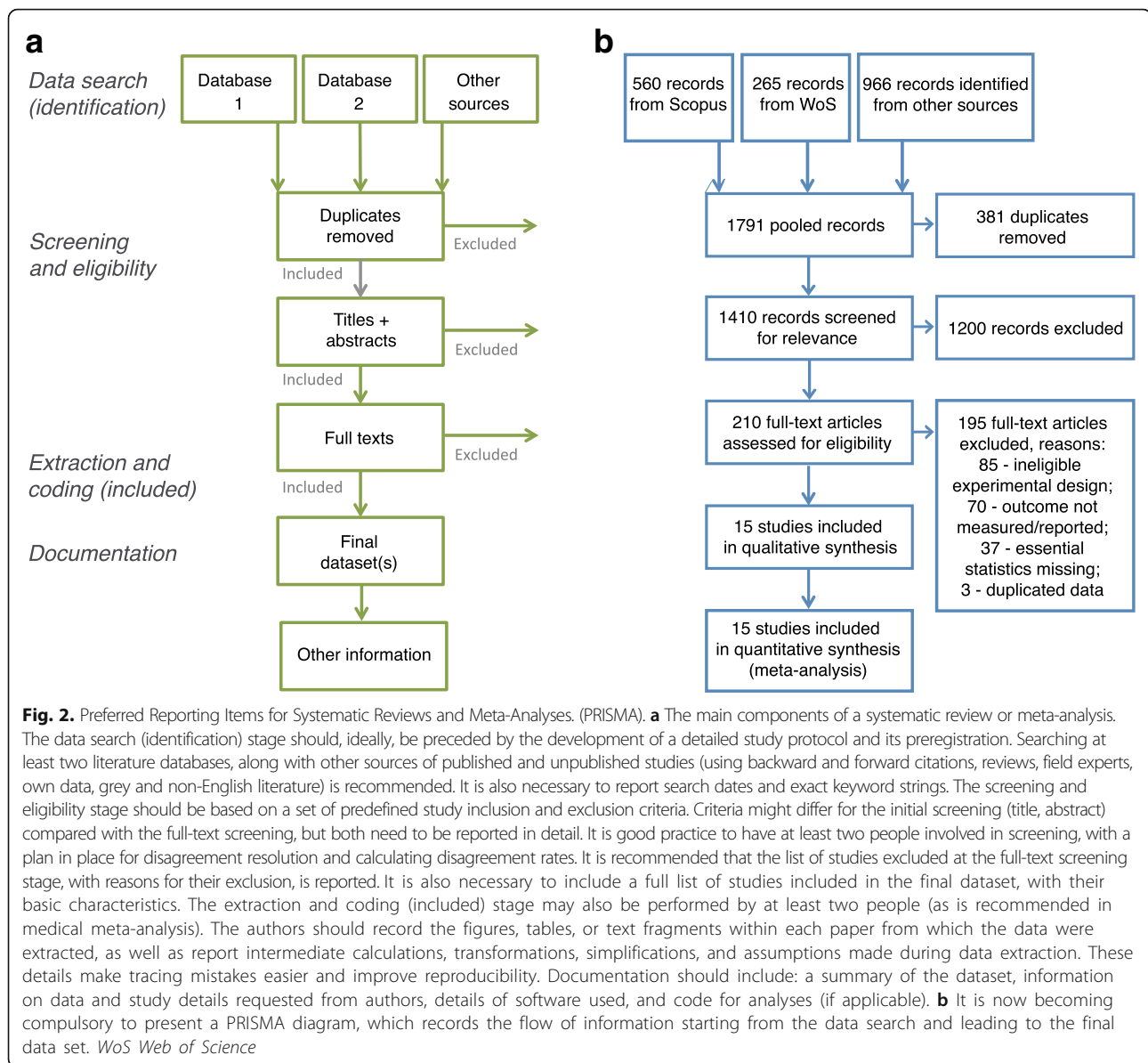
comparing differences between the variances, rather than means, of two groups [38–40]. It is important to assess whether a study used an appropriate effect size statistic for the focal question. For example, when the authors are interested in the effect of a certain treatment, they should typically use SMD or response ratio, rather than Zr . Most biological meta-analyses will use one of the standardized effect sizes mentioned above. These effect sizes are referred to as standardized because they are unit-less (dimension-less), and thus are comparable across studies, even if those studies use different units for reporting (for example, size can be measured by weight [g] or length [cm]). However, unstandardized effect sizes (raw mean difference or regression coefficients) can be used, as happens in medical and social sciences, when all studies use common and directly comparable units (for example, blood pressure [mmHg]).

That being said, a biological meta-analysis will often bring together original studies of different types (such as combinations of experimental and observational studies). As a general rule, SMD is considered a better fit for experimental studies, whereas Zr is better for observational (correlational) studies. In some cases different effect sizes might be calculated for different studies in a meta-analysis and then be converted to a common type prior to analysis: for example, Zr and SMD (and also $\ln OR$) are interconvertible. Thus, if we were, for example, interested in the effect of temperature on growth, we could combine results from experimental studies that compare mean growth at two temperatures (SMD) with results from observational studies that compare growth across a temperature gradient (Zr) in a single meta-analysis by transforming SMD from experimental studies to Zr [29–32].

Q3: Is non-independence taken into account?

Statistical non-independence occurs when data points (in this case, effect sizes) are somewhat related to each other. For example, multiple effect sizes may be taken from a single study, making such effect sizes correlated. Failing to account for non-independence among effect sizes (or data points) can lead to erroneous conclusions [14, 41–44]—typically, an invalid conclusion of statistical significance (type I error; also see Q7). Many authors do not correct for non-independence (see [15]). There are two main reasons for this: the authors may be unaware of non-independence among effect sizes or they may have difficulty in appropriately accounting for the correlated structure despite being aware of the problem.

To help the reader to detect non-independence where the authors have failed to take it into account, we have illustrated four common types of dependent effect sizes in Fig. 3, with the legend including a biological example for each type. Phylogenetic relatedness (Fig. 3d) is unique to biological meta-analyses that include multiple



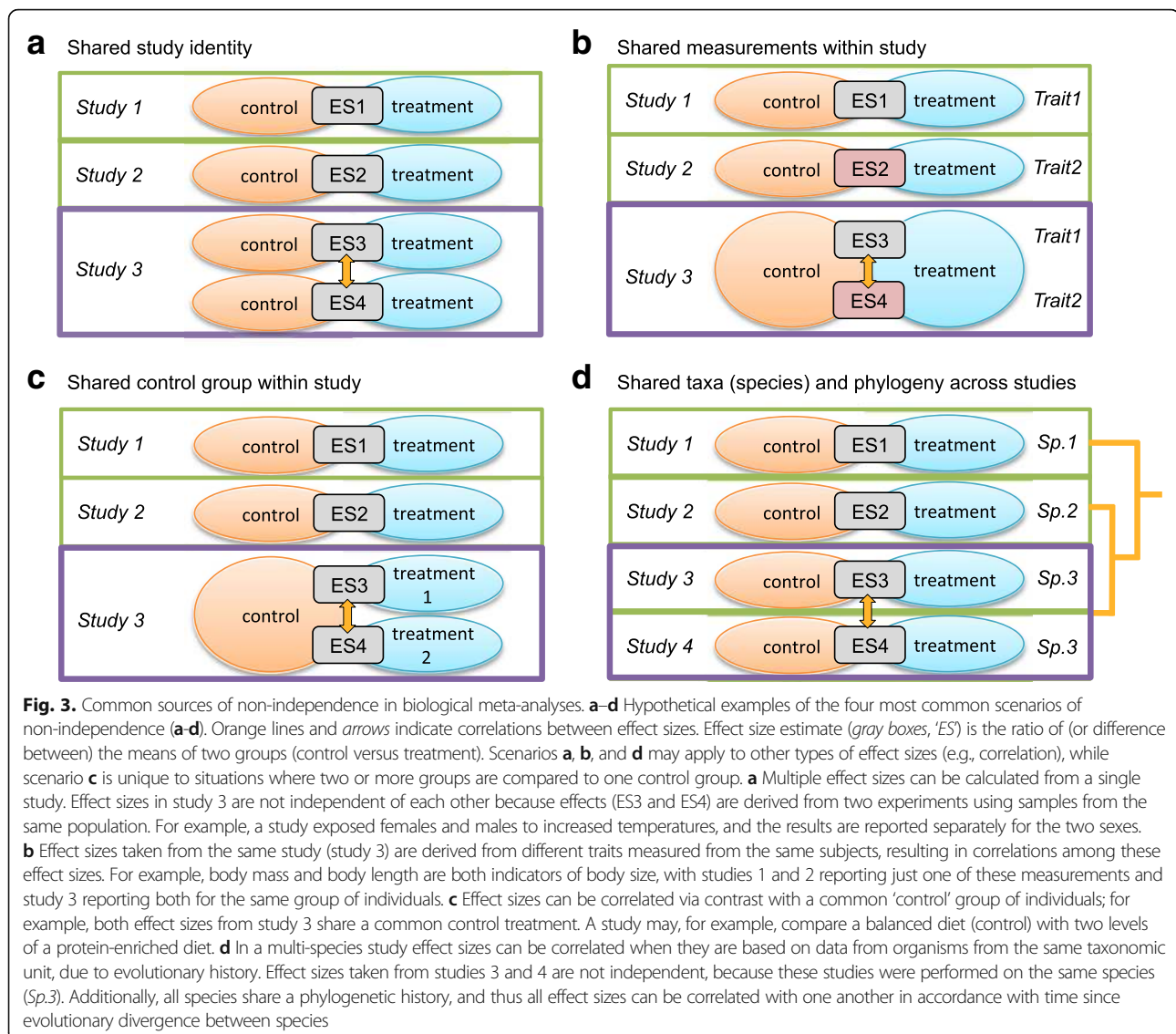
species [14, 42, 45]. Correction for phylogenetic non-independence can now be implemented in several mainstream software packages, including *metafor* [46].

Where non-independence goes uncorrected because of the difficulty of appropriately accounting for the correlated structure, it is usually because the non-independence is incompatible with the two traditional meta-analytic models (the fixed-effect and the random-effects models—see Q4) that are implemented in widely used software (for example, *Metawin* [47]). Therefore, it was (and still is) common to see averaging of non-independent effect sizes or the selection of one among several related effect sizes. These solutions are not necessarily incorrect (see [48]), but may be limiting, and clearly lead to a loss of information [14, 49]. The reader should be aware that it is preferable to model

non-independence directly by using multilevel meta-analytic models (see Q4) if the dataset contains a sufficient number of studies (complex models usually require a large sample size) [14].

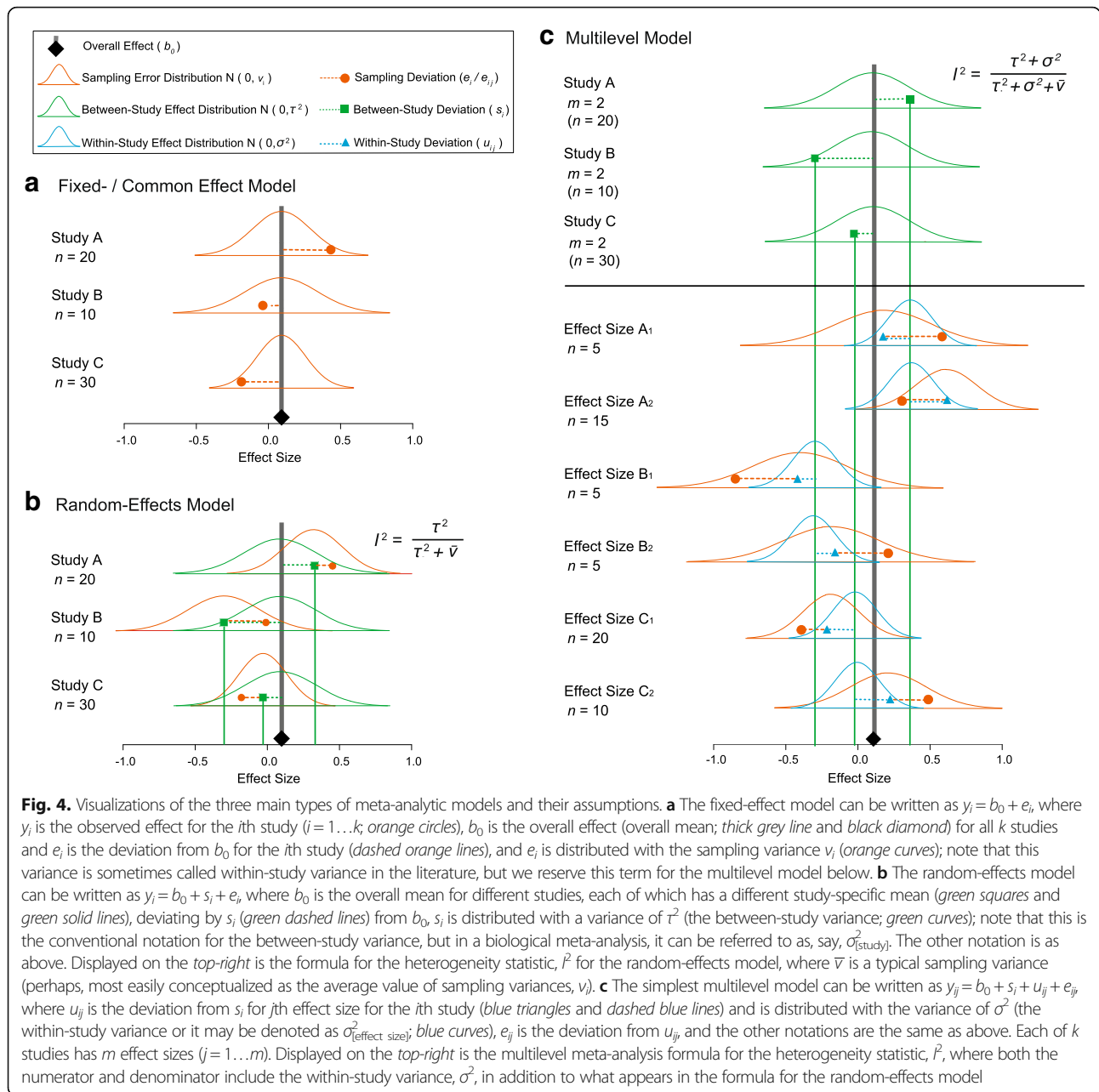
Q4: Which meta-analytic model?

There are three main kinds of meta-analytic models, which differ in their assumptions about the data being analyzed, but for all three the common and primary goal is to estimate an overall effect (but see Q5). These models are: i) fixed-effect models (also referred to as common-effect models [31]); ii) random-effects models [50]; and iii) multilevel (hierarchical) models [14, 49]. We have depicted these three kinds of models in Fig. 4. When assessing a meta-analysis, the reader should be



aware of the different assumptions each model makes. For the fixed-effect (Fig. 4a) and random-effects (Fig. 4b) models, all effect sizes are assumed to be independent (that is, one effect per study, with no other sources of non-independence; see Q3). The other major assumption of a fixed-effect model is that all effect sizes share a common mean, and thus that variation among data is solely attributable to sampling error (that is, the sampling variance, v_i , which is related to the sample size for each effect size; Fig. 4a). This assumption, however, is unrealistic for most biological meta-analyses (see [22]), especially those involving multiple populations, species, and/or ecosystems [14, 51]. The use of a fixed-effect model could be justified where the effect sizes are obtained from the same species or population (assuming one effect per study and that the effect sizes are independent of each other). Random-effects models relax

the assumption that all studies are based on samples from the same underlying population, meaning that these models can be used when different studies are likely to quantify different underlying mean effects (for example, one study design yields a different effect than another), as is likely to be the case for a biological meta-analysis (Fig. 4b). A random-effects model needs to quantify the between-study variance, τ^2 , and to estimate this variance correctly requires a sample size of perhaps over ten effect sizes. Thus, random-effects models may not be appropriate for a meta-analysis with very few effect sizes, and fixed-effect models may be appropriate in such situations (bearing in mind the aforementioned assumptions). Multilevel models relax the assumptions of independence made by fixed-effect and random-effects models; that is, for example, these models allow for multiple effect sizes to come from the same study, which may be the case if one



study contains several different experimental treatments, or the same experimental treatment is applied across species within one study. The simplest multilevel model depicted in Fig. 4c includes study effects, but it is probably not difficult to imagine this multilevel approach being extended to incorporate more ‘levels,’ such as species effects, as well (for more details see [13, 14, 41, 45, 49, 51–54]; incorporating the types of non-independence described in Fig. 3b–d requires modeling of correlation and covariance matrices).

It is important for you, as the reader, to check whether the authors, given their data, employed an

appropriate model or set of models (see Q3), because results from inappropriate models could lead to erroneous conclusions. For example, applying a fixed effect model, when a random effects model is more appropriate, may lead to errors in both the estimated magnitude of the overall effect and its uncertainty [55]. As can be seen from Fig. 4, each of the three main meta-analytical models assume that effect sizes are distributed around an overall effect (b_0). The reader should also be aware that this estimated overall effect (meta-analytic mean) is most commonly presented in an accompanying forest plot(s) [22, 56, 57].

Figure 5a is a forest plot of the kind that is typically seen in medical and social sciences, with both overall means from the fixed-effect or the common effect meta-analysis (FEMA/CEMA) model, and the random-effects meta-analysis (REMA) model. In a multiple-species meta-analysis, you may see an elaborate forest plot such as that in Fig. 5b.

Q5: Is the level of consistency among studies reported?

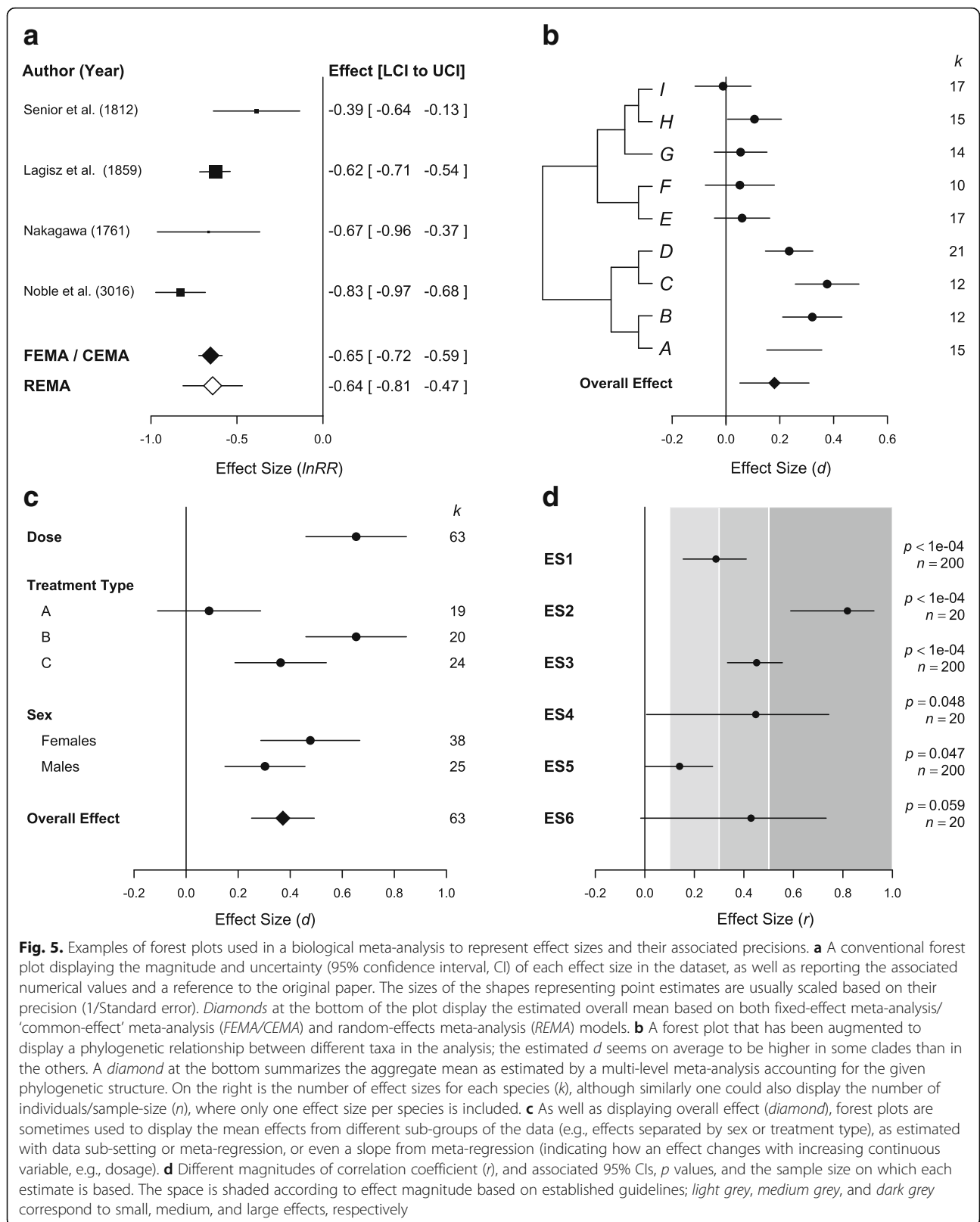
The overall effect reported by a meta-analysis cannot be properly interpreted without an analysis of the heterogeneity, or inconsistency, among effect sizes. For example, an overall mean of zero can be achieved when effect sizes are all zero (homogenous; that is, the between-study variance is 0) or when all effect sizes are very different (heterogeneous; the between study variance is >0) but centered on zero, and clearly one should draw different conclusions in each case. Rather disturbingly, we have recently found that in ecology and evolutionary biology, tests of heterogeneity and their corresponding statistics (τ^2 , Q , and I^2) are only reported in about 40% of meta-analyses [58]. Cochran's Q (often referred to as Q_{total} or Q_T) is a test statistic for the between-study variance (τ^2), which allows one to assess whether the estimated between-study variance is non-zero (in other words, whether a fixed-effect model is appropriate as this model assumes $\tau^2 = 0$) [59]. As a test statistic, Q is often presented with a corresponding p value, which is interpreted in the conventional manner. However, if presented without the associated τ^2 , Q can be misleading because, as is the case with most statistical tests, Q is more likely to be significant when more studies are included even if τ^2 is relatively small (see also Q7); the reader should therefore check whether both statistics are presented. Having said that, the magnitude of the between-study variance (τ^2) can be hard to interpret because it is dependent on the scale of the effect size. The heterogeneity statistic, I^2 , which is a type of intra-class correlation, has also been recommended as it addresses some of the issues associated with Q and τ^2 [60, 61]. I^2 ranges from 0 to 1 (or 0 to 100%) and indicates how much of the variation in effect sizes is due to the between-study variance (τ^2 ; Fig. 4b) or, more generally, the proportion of variance not attributable to sampling (error) variance (\bar{v} ; see Fig. 4b, c; for more details and extensions, see [13, 14, 49, 58]). Tentatively suggested benchmarks for I^2 are low, medium, and high heterogeneity of 25, 50, and 75% [61]. These values are often used in meta-analyses in medical and social sciences for interpreting the degree of heterogeneity [62, 63]. However, we have shown that the average I^2 in meta-analyses in ecology and evolution may be as high as 92%, which may not be surprising as these meta-analyses are not confined to a single species (or human subjects) [58]. Accordingly, the reader should consider whether these conventional benchmarks are applicable to the biological

meta-analysis under consideration. The quantification and reporting of heterogeneity statistics is essential for any meta-analysis, and you need to make sure some or combinations of these three statistics are reported in a meta-analysis before making generalisations based on the overall mean effect (except when using fixed-effect models).

Q6: Are the causes of variation among studies investigated?

After quantifying variation among effect sizes beyond sampling variation (I^2), it is important to understand the factors, or moderators, that might explain this additional variation, because it can elucidate important processes mediating variation in the strength of effect. Moderators are equivalent to explanatory (independent) variables or predictors in a normal linear model [8, 49, 62]. For example, in a meta-analysis examining the effect of experimentally increased temperature on growth using SMD (control versus treatment comparison) studies might vary in the magnitude of temperature increase: say 10 versus 20 °C in the first study, but 12 versus 16 °C in the second. In this case, the moderator of interest is the temperature difference between control and treatment groups (10 °C for the first study and 4 °C for the second). This difference in study design may explain variation in the magnitude of the observed effect sizes (that is, the SMD of growth at the two temperatures). Models that examine the effects of moderators are referred to as meta-regressions. One important thing to note is that meta-regression is just a special type of weighted regression. Therefore, the usual standard practices for regression analysis also apply to meta-regression. This means that, as a reader, you may want to check for the inclusion of too many predictors/moderators in a single model, or 'over-fitting' (the rule of thumb is that the authors may need at least ten effect sizes per estimated moderator) [64], and for 'fishing expeditions' (also known as 'data dredging' or ' p hacking'; that is, non-hypothesis-based exploration for statistical significance [28, 65, 66]).

Moderators can be correlated with each other (that is, be subject to the multicollinearity problem) and this dependence, in turn, could lead authors to attribute an effect to the wrong moderator [67]. For example, in the aforementioned meta-analysis of temperature on growth, the study may claim that females grew faster than males when exposed to increased temperatures. However, if most females came from studies where higher temperature increases were used but males were usually exposed to small increases, the moderators for sex and temperature would be confounded. Accordingly, the effect may be due to the severity of the temperature change rather than a sex effect. Readers should check whether the authors have examined potential confounding effects of moderators and reported how different potential moderators are related to one



another. It is also important to know the sources of the moderator data; for example, species-specific data can be obtained from sources (papers, books, databases) other than the primary studies from which effect sizes were taken (Q1). Meta-regression results can be presented in a forest plot, as in Fig. 5c (see also Q6 and Fig. 6e, f; the standardization of moderators may often be required for analyzing moderators [68]).

Another way of exploring heterogeneity is to run separate meta-analysis on data subsets (for example, separating effect sizes by the sex of exposed animals). This is similar to running a meta-regression with categorical moderators (often referred to as subgroup analysis), with the key difference being that the authors can obtain heterogeneity statistics (such as I^2) for each subset in a subset analysis [69]. It is important to note that many meta-analytic studies include more than one meta-analysis, because several different types of data are included, even though these data pertain to one topic (for example, the effect of increased temperature not only on body growth, but also on parasite load). You, as a reader, will need to evaluate whether the authors' sub-grouping or sub-setting of their data makes sense biologically; hopefully the authors will have provided clear justification (Q1).

Q7: Are effects interpreted in terms of biological importance?

Meta-analyses should focus on biological importance (which is reflected in estimated effects and their uncertainties) rather than on p values and statistical significance, as is outlined in Fig. 5d [29, 70–72]. It should be clear to most readers that interpreting results only in terms of statistical significance (p values) can be misleading. For example, in terms of effects' magnitudes and uncertainties, ES4 and ES6 in Fig. 5d are nearly identical, yet ES4 is statistically significant, while ES6 is not. Also, ES1–3 are all what people describe as 'highly significant', but their magnitudes of effect, and thus biological relevance, are very different. The term 'effective thinking' is used to refer to the philosophy of placing emphasis on the interpretation of overall effect size in terms of biological importance rather than statistical significance [29]. It is useful for the reader to know that each of ES1–3 in Fig. 5d can be classified as what Jacob Cohen proposed as small, medium, and large effects, which are $r = 0.1$, 0.3 , and 0.5 , respectively [73]; for SMD, corresponding benchmarks are d (SMD) = 0.2 , 0.5 , and 0.8 [29, 61]. Researchers may have good intuition for the biological relevance of a particular r value, but this may not be the case for SMD. Thus, it may be helpful to know that Cohen's benchmarks for r and d are comparable. Having said that, these benchmarks, along with those for I^2 , have to be used carefully, because what constitute biologically important effect magnitudes can

vary according to the biological questions and systems (for example, 1% difference in fitness would not matter in ecological time but it certainly does over evolutionary time). We stress that authors should primarily be discussing their effect sizes (point estimates) and uncertainties in terms of point estimates (confidence intervals, or credible intervals, CIs) [29, 70, 72]. Meta-analysts can certainly note statistical significance, which is related to CI width, but direct description of precision may be more useful. Note that effect magnitude and precision are exactly what are displayed in forest plots (Fig. 5).

Q8: Has publication bias been considered?

Meta-analysts have to assume that research is published regardless of statistical significance, and that authors have not selectively reported results (that is, that there is no publication bias and no reporting bias) [74–76]. This is unlikely. Therefore, meta-analysts should check for publication bias using statistical and graphical tools. The reader should know that the commonly used methods for assessing publication bias are funnel plots (Fig. 6a, b), radial (Galbraith) plots (Fig. 6c), and Egger's (regression) tests [57, 77, 78]; these methods visually or statistically (Egger's test) help to detect funnel asymmetry, which can be caused by publication bias [79]. However, you should also know that funnel asymmetry may be an artifact of too few a number of effect sizes. Further, funnel asymmetry can result from heterogeneity (non-zero between-study variance, τ^2) [77, 80]. Some readily-implementable methods for correcting for publication bias also exist, such as trim-and-fill methods [81, 82] or the use of the p curve [83]. The reader should be aware that these methods have shortcomings; for example, the trim-and-fill method can under- or overestimate an overall effect size, while the p curve probably only works when effect sizes come from tightly controlled experiments [83–86] (see Q9; note that 'selection modeling' is an alternative approach, but it is more technically difficult [79]). A less contentious topic in this area is the time-lag bias, where the magnitudes of an effect diminish over time [87–89]. This bias can be easily tested with a cumulative meta-analysis and visualized using a forest plot [90, 91] (Fig. 6d) or a bubble plot combined with meta-regression (Fig. 6e; note that journal impact factor can also be associated with the magnitudes of effect sizes [92], Fig. 6f).

Alarming, meta-reviews have found that only half of meta-analyses in ecology and evolution assessed publication bias [14, 15]. Disappointingly, there are no perfect solutions for detecting and correcting for publication bias, because we never really know with certainty what kinds of data are actually missing (although usually statistically non-significant and small effect sizes are under-represented in the dataset; see also Q9). Regardless, the

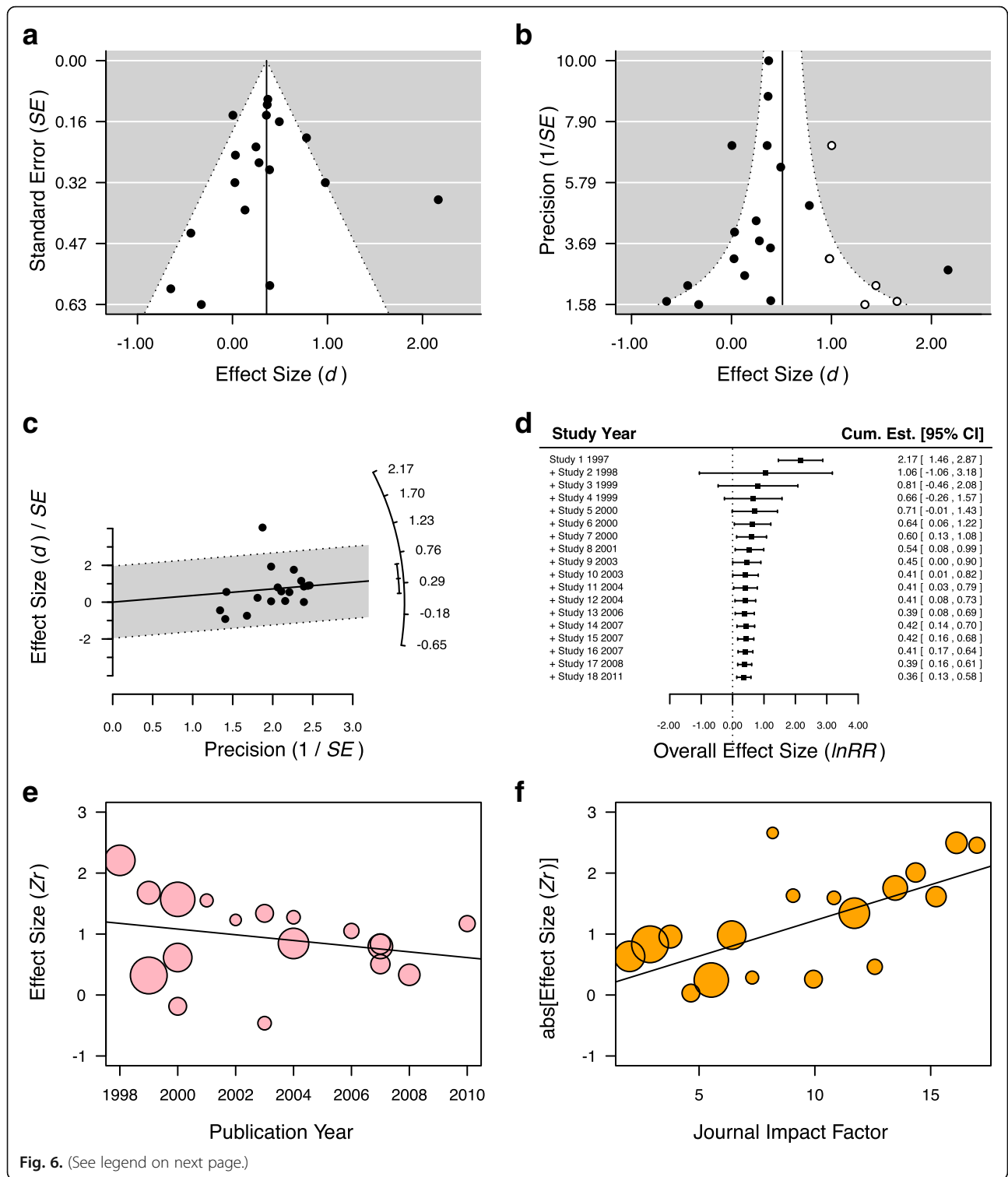


Fig. 6. (See legend on next page.)

(See figure on previous page.)

Fig. 6. Graphical assessment tools for testing for publication bias. **a** A funnel plot showing greater variance among effects that have larger standard errors (SE) and that are thus more susceptible to sampling variability. Some studies in the lower right corner of the plot, opposite to most major findings, with large SE (less likely to detect significant results) are potentially missing (not shown), suggesting publication bias. **b** Often funnel plots are depicted using precision ($1/SE$), giving a different perspective of publication bias, where studies with low precision (or large SE) are expected to show greater sampling variability compared to studies with high precision (or low SE). Note that the data in panel **b** are the same as in panel **a**, except that a trim-and-fill analysis has been performed in **b**. A trim-and-fill analysis estimates the number of studies missing from the meta-analysis and creates ‘mirrored’ studies on the opposite side of the funnel (*unfilled dots*) to estimate how the overall effect size estimate is impacted by these missing studies. **c** Radial (Galbraith) plot in which the slope should be close to zero, if little publication bias exists, indicating little asymmetry in a corresponding funnel plot (compare it with **b**); radial plots are closely associated with Egger’s tests. **d** Cumulative meta-analysis showing how the effect size changes as the number of studies on a particular topic increases. In this situation, the addition of effect size estimates led to convergence on an overall estimate of 0.36, and the confidence intervals decrease as the precision of the estimate increases. **e** Bubble plot showing a temporal trend in effect size (Zr) across years. Here effect sizes are weighted by their precision; larger bubbles indicate more precise estimates and smaller bubbles less precise. **f** Bubble plot of the relationship between effect size and impact factors of journals, indicating that larger magnitudes of effect sizes (the absolute values of Zr) tend to be published in higher impact journals

existing tools should still be used and the presentation of results from at least two different methods is recommended.

Q9: Are results really robust and unbiased?

Although meta-analyses from the medical and social sciences are often accompanied by sensitivity analysis [69, 93], biological meta-analyses are often devoid of such tests. Sensitivity analyses include not only running meta-analysis and meta-regression without influential effect sizes or studies (for example, many effect sizes that come from one study or one clear outlier effect size; sometimes also termed ‘subset analysis’), but also, for example, comparing meta-analytic models with and without modeling non-independence (Q3–5), or other alternative analyses [44, 93]. Analyses related to publication bias could generally also be regarded as part of a sensitivity analysis (Q8). In addition, it is worthwhile checking if the authors discuss missing data [94, 95] (different from publication bias; Q8). Two major cases of missing data in meta-analysis are: 1) a lack of the information required to obtain sampling variance for a portion of the dataset (for example, missing standard deviations); and 2) missing information for moderators [96] (for example, most studies report the sex of animals used but a few studies do not). For the former, the authors should run models both with and without data with sampling variance information; note that without sampling variance (that is, unweighted meta-analysis) the analysis becomes a normal linear model [21]. For both cases 1 and 2, the authors could use data imputation techniques (as of yet, this is not standard practice). Although data imputation methods are rather technical, their implementation is becoming easier [96–98]. Furthermore, it may often be important to consider the sample size (the number and precision of constituent effect sizes) and statistical power of a meta-analysis. One of the main reasons to conduct meta-analysis is to increase statistical power. However, where an overall effect is expected to be small (as is often the case with biological

phenomena) it is possible that a meta-analysis may be underpowered [99–101].

Q10: Is the current state (and lack) of knowledge summarized?

In the discussion of a meta-analysis, it is reasonable to expect the authors to discuss what conventional wisdoms the meta-analysis has confirmed or refuted and what new insights the meta-analysis has revealed [8, 19, 71, 100]. New insights from meta-analyses are known as ‘review-generated evidence’ (as opposed to ‘study-generated evidence’) [18] because only aggregation of studies can generate such insights. This is analogous to comparative analyses bringing biologists novel understanding of a topic which would be impossible to obtain from studying a single species in isolation [14]. Because meta-analysis brings available (published) studies together in a systematic and/or comprehensive way (but see Q1), the authors can also summarize less quantitative themes along with the meta-analytic results. For example, the authors could point out what types of primary studies are lacking (that is, identify knowledge gaps). Also, the study should provide clear future directions for the topic under investigation [8, 19, 71, 100]; for example, what types of empirical work are required to push the topic forward. An obvious caveat is that the value of these new insights, knowledge gaps and future directions is contingent upon the answers to the previous nine questions (Q1–9).

Post meta-evaluation: more to think about

Given that we are advocates of meta-analysis, we are certainly biased in saying ‘meta-analyses are enlightening’. A more nuanced interpretation of what we really mean is that meta-analyses are enlightening when they are done well. Mary Smith and Gene Glass published the first research synthesis carrying the label of ‘meta-analysis’ in 1977 [102]. At the time,

their study and the general concept was ridiculed with the term ‘mega-silliness’ [103] (see also [16, 17]). Although the results of this first meta-analysis on the efficacy of psychotherapies still stand strong, it is possible that a meta-analysis contains many mistakes. In a similar vein, Robert Whittaker warned that the careless use of meta-analyses could lead to ‘mega-mistakes’, reinforcing his case by drawing upon examples from ecology [104, 105].

Even where a meta-analysis is conducted well, a future meta-analysis can sometimes yield a completely opposing conclusion from the original (see [106] for examples from medicine and the reasons why). Thus, medical and social scientists are aware that updating meta-analyses is extremely important, especially given that time-lag bias is a common phenomenon [87–89]. Although updating is still rare in biological meta-analyses [8], we believe this should become part of the research culture in the biological sciences. We appreciate the view of John Ioannidis who wrote, “Eventually, all research [both primary and meta-analytic] can be seen as a large, ongoing, cumulative meta-analysis” [106] (cf. effective thinking; Fig. 6d).

Finally, we have to note that we have just scratched the surface of the enormous subject of meta-analysis. For example, we did not cover other relevant topics such as multilevel (hierarchical) meta-analytic and meta-regression models [14, 45, 49], which allow more complex sources of non-independence to be modeled, as well as multivariate (multi-response) meta-analyses [107] and network meta-analyses [108]. Many of the ten appraisal questions above, however, are also relevant for these extended methods. More importantly, we believe that asking the ten questions above will readily equip biologists with the knowledge necessary to differentiate among mega-enlightenment, mega-mistakes, and something in-between.

Acknowledgements

We are grateful for comments on our article from the members of I-DEEL. We also thank John Brookfield, one anonymous referee, and the BMC Biology editorial team for comments, which significantly improved our article. SN acknowledges an ARC (Australian Research Council) Future Fellowship (FT130100268), DWAN is supported by an ARC Discovery Early Career Research Award (DE150101774) and UNSW Vice Chancellors Fellowship. AMS is supported by a Judith and David Coffey Fellowship from the University of Sydney.

Competing interests

The authors declare that they have no competing interests.

Author details

¹Evolution & Ecology Research Centre and School of Biological, Earth and Environmental Sciences, University of New South Wales, Sydney, NSW 2052, Australia. ²Diabetes and Metabolism Division, Garvan Institute of Medical Research, 384 Victoria Street, Darlinghurst, Sydney, NSW 2010, Australia. ³Charles Perkins Centre, University of Sydney, Sydney, NSW 2006, Australia. ⁴School of Mathematics and Statistics, University of Sydney, Sydney, NSW 2006, Australia.

Published online: 03 March 2017

References

- Glass GV. Primary, secondary, and meta-analysis research. *Educ Res.* 1976;5:3–8.
- Glass GV. Meta-analysis at middle age: a personal history. *Res Synth Methods.* 2015;6(3):221–31.
- Cooper H, Hedges LV, Valentine JC. The handbook of research synthesis and meta-analysis. New York: Russell Sage Foundation; 2009.
- Hedges L, Olkin I. Statistical methods for meta-analysis. New York: Academic Press; 1985.
- Egger M, Smith GD, Altman DG. Systematic reviews in health care: meta-analysis in context. 2nd ed. London: BMJ; 2001.
- Arnqvist G, Wooster D. Meta-analysis: synthesizing research findings in ecology and evolution. *Trends Ecol Evol.* 1995;10:236–40.
- Koricheva J, Gurevitch J, Mengersen K. Handbook of meta-analysis in ecology and evolution. Princeton: Princeton University Press; 2013.
- Nakagawa S, Poulin R. Meta-analytic insights into evolutionary ecology: an introduction and synthesis. *Evolutionary Ecol.* 2012;26:1085–99.
- van der Worp HB, Howells DW, Sena ES, Porritt MJ, Rewell S, O’Collins V, Macleod MR. Can animal models of disease reliably inform human studies? *PLoS Med.* 2010;7(3), e1000245.
- Stewart G. Meta-analysis in applied ecology. *Biol Lett.* 2010;6(1):78–81.
- Stewart GB, Schmid CH. Lessons from meta-analysis in ecology and evolution: the need for trans-disciplinary evidence synthesis methodologies. *Res Synth Methods.* 2015;6(2):109–10.
- Lortie CJ, Stewart G, Rothstein H, Lau J. How to critically read ecological meta-analyses. *Res Synth Methods.* 2015;6(2):124–33.
- Nakagawa S, Kubo T. Statistical models for meta-analysis in ecology and evolution (in Japanese). *Proc Inst Stat Math.* 2016;64(1):105–21.
- Nakagawa S, Santos ESA. Methodological issues and advances in biological meta-analysis. *Evol Ecol.* 2012;26:1253–74.
- Koricheva J, Gurevitch J. Uses and misuses of meta-analysis in plant ecology. *J Ecol.* 2014;102:828–44.
- Page MJ, Moher D. Mass production of systematic reviews and meta-analyses: an exercise in mega-silliness? *Milbank Q.* 2016;94(5):515–9.
- Ioannidis JPA. The mass production of redundant, misleading, and conflicted systematic reviews and meta-analyses. *Milbank Q.* 2016;94(5):485–514.
- Cooper HM. Research synthesis and meta-analysis : a step-by-step approach. 4th ed. London: SAGE; 2010.
- Rothstein HR, Lortie CJ, Stewart GB, Koricheva J, Gurevitch J. Quality standards for research syntheses. In: Koricheva J, Gurevitch J, Mengersen K, editors. The handbook of meta-analysis in ecology and evolution. Princeton: Princeton University Press; 2013. p. 323–38.
- Vetter D, Rcker G, Storch I. Meta-analysis: a need for well-defined usage in ecology and conservation biology. *Ecosphere.* 2013;6:1–24.
- Morrissey M. Meta-analysis of magnitudes, differences, and variation in evolutionary parameters. *J Evol Biol.* 2016;29(10):1882–904.
- Vesterinen HM, Sena ES, Egan KJ, Hirst TC, Churolov L, Currie GL, Antonic A, Howells DW, Macleod MR. Meta-analysis of data from animal studies: a practical guide. *J Neurosci Methods.* 2014;221:92–102.
- Mongeon P, Paul-Hus A. The journal coverage of Web of Science and Scopus: a comparative analysis. *Scientometrics.* 2016;106(1):213–28.
- Côté IM, Jennions MD. The procedure of meta-analysis in a nutshell. In: Koricheva J, Gurevitch J, Mengersen K, editors. The handbook of meta-analysis in ecology and evolution. Princeton: Princeton University Press; 2013. p. 14–24.
- Liberati A, Altman DG, Tetzlaff J, Mulrow C, Gøtzsche PC, Ioannidis JPA, Clarke M, Devereaux PJ, Kleijnen J, Moher D. The PRISMA statement for reporting systematic reviews and meta-analyses of studies that evaluate health care interventions: explanation and elaboration. *PLoS Med.* 2009;6:e1000100. doi:10.1371/journal.pmed.1000100.
- Moher D, Liberati A, Tetzlaff J, Altman DG, Group P. Preferred reporting items for systematic reviews and meta-analyses: the PRISMA statement. *Ann Internal Med.* 2009;151:264–9.
- Ellison AM. Repeatability and transparency in ecological research. *Ecology.* 2010;91(9):2536–9.
- Parker TH, Forstmeier W, Koricheva J, Fidler F, Hadfield JD, Chee YE, Kelly CD, Gurevitch J, Nakagawa S. Transparency in ecology and evolution: real problems, real solutions. *Trends Ecol Evol.* 2016;31(9):711–9.
- Nakagawa S, Cuthill IC. Effect size, confidence interval and statistical significance: a practical guide for biologists. *Biol Rev.* 2007;82:591–605.

30. Borenstein M. Effect size for continuous data. In: Cooper H, Hedges LV, Valentine JC, editors. *The handbook of research synthesis and meta-analysis*. New York: Russell Sage Foundation; 2009. p. 221–35.
31. Borenstein M, Hedges LV, Higgins JPT, Rothstein HR. *Introduction to meta-analysis*. West Sussex: Wiley; 2009.
32. Fleiss JL, Berlin JA. Effect sizes for dichotomous data. In: Cooper H, Hedges LV, Valentine JC, editors. *The handbook of research synthesis and meta-analysis*. New York: Russell Sage Foundation; 2009. p. 237–53.
33. Hedges LV, Gurevitch J, Curtis PS. The meta-analysis of response ratios in experimental ecology. *Ecology*. 1999;80(4):1150–6.
34. Hector KL, Lagisz M, Nakagawa S. The effect of resveratrol on longevity across species: a meta-analysis. *Biol Lett*. 2012. doi: 10.1098/rsbl.2012.0316.
35. Lagisz M, Hector KL, Nakagawa S. Life extension after heat shock exposure: Assessing meta-analytic evidence for hormesis. *Ageing Res Rev*. 2013;12(2):653–60.
36. Nakagawa S, Lagisz M, Hector KL, Spencer HG. Comparative and meta-analytic insights into life-extension via dietary restriction. *Aging Cell*. 2012; 11:401–9.
37. Garratt M, Nakagawa S, Simons MJ. Comparative idiosyncrasies in life extension by reduced mTOR signalling and its distinctiveness from dietary restriction. *Aging Cell*. 2016;15(4):737–43.
38. Nakagawa S, Poulin R, Mengersen K, Reinhold K, Engqvist L, Lagisz M, Senior AM. Meta-analysis of variation: ecological and evolutionary applications and beyond. *Methods Ecol Evol*. 2015;6(2):143–52.
39. Senior AM, Nakagawa S, Lihoreau M, Simpson SJ, Raubenheimer D. An overlooked consequence of dietary mixing: a varied diet reduces interindividual variance in fitness. *Am Nat*. 2015;186(5):649–59.
40. Senior AM, Gosby AK, Lu J, Simpson SJ, Raubenheimer D. Meta-analysis of variance: an illustration comparing the effects of two dietary interventions on variability in weight. *Evol Med Public Health*. 2016;2016(1):244–55.
41. Mengersen K, Jennions MD, Schmid CH. Statistical models for the meta-analysis of non-independent data. In: Koricheva J, Gurevitch J, Mengersen K, editors. *The handbook of meta-analysis in ecology and evolution*. Princeton: Princeton University Press; 2013. p. 255–83.
42. Lajeunesse MJ. Meta-analysis and the comparative phylogenetic method. *Am Nat*. 2009;174(3):369–81.
43. Chamberlain SA, Hovick SM, Dibble CJ, Rasmussen NL, Van Allen BG, Maitner BS. Does phylogeny matter? Assessing the impact of phylogenetic information in ecological meta-analysis. *Ecol Lett*. 2012;15:627–36.
44. Noble DWA, Lagisz M, O'Dea RE, Nakagawa S. Non-independence and sensitivity analyses in ecological and evolutionary meta-analyses. *Mol Ecol*. 2017; in press. doi: 10.1111/mec.14031.
45. Hadfield J, Nakagawa S. General quantitative genetic methods for comparative biology: phylogenies, taxonomies and multi-trait models for continuous and categorical characters. *J Evol Biol*. 2010;23:494–508.
46. Viechtbauer W. Conducting meta-analyses in R with the metafor package. *J Stat Software*. 2010;36(3):1–48.
47. Rosenberg MS, Adams DC, Gurevitch J. *MetaWin: statistical software for meta-analysis*. 2nd ed. Sunderland: Sinauer; 2000.
48. Marin-Martinez F, Sánchez-Meca J. Averaging dependent effect sizes in meta-analysis: a cautionary note about procedures. *Spanish J Psychol*. 1999;2:32–8.
49. Cheung MWL. Modeling dependent effect sizes with three-level meta-analyses: a structural equation modeling approach. *Psychol Methods*. 2014;19:211–29.
50. Sutton AJ, Higgins JPI. Recent developments in meta-analysis. *Stat Med*. 2008;27(5):625–50.
51. Mengersen K, Schmid CH, Jennions MD, Gurevitch J. Statistical models and approaches to inference. In: Koricheva J, Gurevitch J, Mengersen K, editors. *The handbook of meta-analysis in ecology and evolution*. Princeton: Princeton University Press; 2013. p. 89–107.
52. Lajeunesse MJ. Meta-analysis and the comparative phylogenetic method. *Am Nat*. 2009;174:369–81.
53. Lajeunesse MJ. On the meta-analysis of response ratios for studies with correlated and multi-group designs. *Ecology*. 2011;92:2049–55.
54. Lajeunesse MJ, Rosenberg MS, Jennions MD. Phylogenetic nonindependence and meta-analysis. In: Koricheva J, Gurevitch J, Mengersen K, editors. *The handbook of meta-analysis in ecology and evolution*. Princeton: Princeton University Press; 2013. p. 284–99.
55. Borenstein M, Hedges LV, Higgins JPT, Rothstein H. A basic introduction to fixed-effect and random-effects models for meta-analysis. *Res Synth Methods*. 2010;1:97–111.
56. Vetter D, Rucker G, Storch I. Meta-analysis: a need for well-defined usage in ecology and conservation biology. *Ecosphere*. 2013;4(6):1–24.
57. Anzures-Cabrera J, Higgins JPT. Graphical displays for meta-analysis: an overview with suggestions for practice. *Res Synth Methods*. 2010;1(1):66–80.
58. Senior AM, Grueber CE, Kamiya T, Lagisz M, O'Dwyer K, Santos ESA, Nakagawa S. Heterogeneity in ecological and evolutionary meta-analyses: its magnitudes and implications. *Ecology*. 2016; in press.
59. Cochran WG. The combination of estimates from different experiments. *Biometrics*. 1954;10(1):101–29.
60. Higgins JPT, Thompson SG. Quantifying heterogeneity in a meta-analysis. *Stat Med*. 2002;21:1539–58.
61. Higgins JPT, Thompson SG, Deeks JJ, Altman DG. Measuring inconsistency in meta-analyses. *BMJ*. 2003;327:557–60.
62. Huedo-Medina TB, Sanchez-Meca J, Marin-Martinez F, Botella J. Assessing heterogeneity in meta-analysis: Q statistic or I-2 index? *Psychol Methods*. 2006;11(2):193–206.
63. Rucker G, Schwarzer G, Carpenter JR, Schumacher M. Undue reliance on I-2 in assessing heterogeneity may mislead. *BMC Med Res Methodol*. 2008;8:79.
64. Harrell FEJ. *Regression modeling strategies with applications to linear models, logistic regression, and survival analysis*. New York: Springer; 2001.
65. Ioannidis JPA. Why most published research findings are false. *PLoS Med*. 2005;2(8):696–701.
66. Simmons JP, Nelson LD, Simonsohn U. False-positive psychology: undisclosed flexibility in data collection and analysis allows presenting anything as significant. *Psychol Sci*. 2011;22(11):1359–66.
67. Lipsey MW. Those confounded moderators in meta-analysis: Good, bad, and ugly. *Ann Am Acad Polit Social Sci*. 2003;587:69–81.
68. Schielzeth H. Simple means to improve the interpretability of regression coefficients. *Methods Ecol Evol*. 2010;1(2):103–13.
69. Higgins JPT, Green S. *Cochrane handbook for systematic reviews of interventions*. West Sussex: Wiley-Blackwell; 2009.
70. Cumming G, Finch S. A primer on the understanding, use, and calculation of confidence intervals that are based on central and noncentral distributions. *Educ Psychol Meas*. 2001;61:532–84.
71. Jennions MD, Lorite CJ, Koricheva J. Role of meta-analysis in interpreting the scientific literature. In: Koricheva J, Gurevitch J, Mengersen K, editors. *The handbook of meta-analysis in ecology and evolution*. Princeton: Princeton University Press; 2013. p. 364–80.
72. Thompson B. What future quantitative social science research could look like: confidence intervals for effect sizes. *Educ Res*. 2002;31:25–32.
73. Cohen J. *Statistical power analysis for the behavioral sciences*. 2nd ed. Hillsdale: Lawrence Erlbaum; 1988.
74. Rothstein HR, Sutton AJ, Borenstein M. *Publication bias in meta-analysis: prevention, assessment and adjustments*. Chichester: Wiley; 2005.
75. Sena ES, van der Worp HB, Bath PMW, Howells DW, Macleod MR. Publication bias in reports of animal stroke studies leads to major overstatement of efficacy. *PLoS Biol*. 2010;8(3), e1000344.
76. Moller AP, Jennions MD. Testing and adjusting for publication bias. *Trends Ecol Evol*. 2001;16(10):580–6.
77. Egger M, Smith GD, Schneider M, Minder C. Bias in meta-analysis detected by a simple, graphical test. *BMJ*. 1997;315:629–34.
78. Sterne JAC, Egger M. Funnel plots for detecting bias in meta-analysis: guidelines on choice of axis. *J Clin Epidemiol*. 2001;54:1046–55.
79. Sutton AJ. Publication bias. In: Cooper H, Hedges L, Valentine J, editors. *The handbook of research synthesis and meta-analysis*. New York: Russell Sage Foundation; 2009. p. 435–52.
80. Lau J, Ioannidis JPA, Terrin N, Schmid CH, Olkin I. Evidence based medicine—the case of the misleading funnel plot. *BMJ*. 2006;333(7568): 597–600.
81. Duval S, Tweedie R. Trim and fill: a simple funnel-plot-based method of testing and adjusting for publication bias in meta-analysis. *Biometrics*. 2000; 56:455–63.
82. Duval S, Tweedie R. A nonparametric "trim and fill" method of accounting for publication bias in meta-analysis. *J Am Stat Assoc*. 2000;95(449):89–98.
83. Simonsohn U, Nelson LD, Simmons JP. p-curve and effect size: correcting for publication bias using only significant results. *Perspect Psychol Sci*. 2014; 9(6):666–81.
84. Terrin N, Schmid CH, Lau J, Olkin I. Adjusting for publication bias in the presence of heterogeneity. *Stat Med*. 2003;22(13):2113–26.
85. Bruns SB, Ioannidis JPA. p-curve and p-hacking in observational research. *PLoS One*. 2016;11(2), e0149144.

86. Schuch FB, Vancampfort D, Rosenbaum S, Richards J, Ward PB, Veronese N, Solmi M, Cadore EL, Stubbs B. Exercise for depression in older adults: a meta-analysis of randomized controlled trials adjusting for publication bias. *Rev Bras Psiquiatr.* 2016;38(3):247–54.
87. Jennions MD, Moller AP. Relationships fade with time: a meta-analysis of temporal trends in publication in ecology and evolution. *Proc R Soc Lond B Biol Sci.* 2002;269(1486):43–8.
88. Trikalinos TA, Ioannidis JP. Assessing the evolution of effect sizes over time. In: Rothstein H, Sutton AJ, Borenstein M, editors. *Publication bias in meta-analysis: prevention, assessment and adjustments.* Chichester: Wiley; 2005. p. 241–59.
89. Koricheva J, Jennions MD, Lau J. Temporal trends in effect sizes: causes, detection and implications. In: Koricheva J, Gurevitch J, editors. *Mengersen K, editors. Princeton: Princeton University Press; 2013. p. 237–54.*
90. Lau J, Schmid CH, Chalmers TC. Cumulative meta-analysis of clinical trials builds evidence for exemplary medical care. *J Clin Epidemiol.* 1995;48(1):45–57. discussion 59–60.
91. Leimu R, Koricheva J. Cumulative meta-analysis: a new tool for detection of temporal trends and publication bias in ecology. *Proc R Soc Lond B Biol Sci.* 2004;271(1551):1961–6.
92. Murtaugh PA. Journal quality, effect size, and publication bias in meta-analysis. *Ecology.* 2002;83(4):1162–6.
93. Greenhouse JB, Iyengar S. Sensitivity analysis and diagnostics. In: Cooper H, Hedges L, Valentine J, editors. *The handbook of research synthesis and meta-analysis.* New York: Russell Sage Foundation; 2009. p. 417–34.
94. Lajeunesse MJ. Recovering missing or partial data from studies: a survey. In: Koricheva J, Gurevitch J, Mengersen K, editors. *The handbook of meta-analysis in ecology and evolution.* Princeton: Princeton University Press; 2013. p. 195–206.
95. Nakagawa S, Freckleton RP. Missing inaction: the dangers of ignoring missing data. *Trends Ecol Evol.* 2008;23(11):592–6.
96. Ellington EH, Bastille-Rousseau G, Austin C, Landolt KN, Pond BA, Rees EE, Robar N, Murray DL. Using multiple imputation to estimate missing data in meta-regression. *Methods Ecol Evol.* 2015;6(2):153–63.
97. Gurevitch J, Nakagawa S. Research synthesis methods in ecology. In: Fox GA, Negrete-Yankelevich S, Sosa VJ, editors. *Ecological statistics: contemporary theory and application.* Oxford: Oxford University Press; 2015. p. 201–28.
98. Nakagawa S. Missing data: mechanisms, methods and messages. In: Fox GA, Negrete-Yankelevich S, Sosa VJ, editors. *Ecological statistics.* Oxford: Oxford University Press; 2015. p. 81–105.
99. Ioannidis J, Patsopoulos N, Evangelou E. Uncertainty in heterogeneity estimates in meta-analyses. *BMJ.* 2007;335:914–6.
100. Jennions MD, Lorite CJ, Koricheva J. Using meta-analysis to test ecological and evolutionary theory. In: Koricheva J, Gurevitch J, Mengersen K, editors. *The handbook of meta-analysis in ecology and evolution.* Princeton: Princeton University Press; 2013. p. 38–403.
101. Lajeunesse MJ. Power statistics for meta-analysis: tests for mean effects and homogeneity. In: Koricheva J, Gurevitch J, Mengersen K, editors. *The handbook of meta-analysis in ecology and evolution.* Princeton: Princeton University Press; 2013. p. 348–63.
102. Smith ML, Glass GV. Meta-analysis of psychotherapy outcome studies. *Am Psychologist.* 1977;32(9):752–60.
103. Eysenck HJ. Exercise in mega-silliness. *Am Psychologist.* 1978;33(5):517.
104. Whittaker RJ. Meta-analyses and mega-mistakes: calling time on meta-analysis of the species richness-productivity relationship. *Ecology.* 2010;91(9):2522–33.
105. Whittaker RJ. In the dragon's den: a response to the meta-analysis forum contributions. *Ecology.* 2010;91(9):2568–71.
106. Ioannidis JP. Meta-research: the art of getting it wrong. *Res Synth Methods.* 2010;3:169–84.
107. Jackson D, Riley R, White IR. Multivariate meta-analysis: potential and promise. *Stat Med.* 2011;30(20):2481–98.
108. Salanti G, Schmid CH. Special issue on network meta-analysis: introduction from the editors. *Res Synth Methods.* 2012;3(2):69–70.