

Metabolic profiling predicts response to anti-tumor necrosis factor therapy in patients with rheumatoid arthritis

Kapoor, Sabrina R; Filer, Andrew; Fitzpatrick, Martin A; Fisher, Benjamin A; Taylor, Peter C; Buckley, Christopher D; McInnes, Iain B; Raza, Karim; Young, Stephen P

DOI:
[10.1002/art.37921](https://doi.org/10.1002/art.37921)

License:
Other (please specify with Rights Statement)

Document Version
Publisher's PDF, also known as Version of record

Citation for published version (Harvard):
Kapoor, SR, Filer, A, Fitzpatrick, MA, Fisher, BA, Taylor, PC, Buckley, CD, McInnes, IB, Raza, K & Young, SP 2013, 'Metabolic profiling predicts response to anti-tumor necrosis factor therapy in patients with rheumatoid arthritis', *Arthritis & Rheumatism*, vol. 65, no. 6, pp. 1448-1456. <https://doi.org/10.1002/art.37921>

[Link to publication on Research at Birmingham portal](#)

Publisher Rights Statement:

Wiley Gold article. This version is published in *Arthritis & Rheumatism*, [vol. 65, issue 6, June 2013] DOI: <http://dx.doi.org/10.1002/art.37921>. This article is licensed under a CC-BY licence. The funders were the Wellcome Trust.

Eligibility for repository : checked 25/06/2014

General rights

Unless a licence is specified above, all rights (including copyright and moral rights) in this document are retained by the authors and/or the copyright holders. The express permission of the copyright holder must be obtained for any use of this material other than for purposes permitted by law.

- Users may freely distribute the URL that is used to identify this publication.
- Users may download and/or print one copy of the publication from the University of Birmingham research portal for the purpose of private study or non-commercial research.
- User may use extracts from the document in line with the concept of 'fair dealing' under the Copyright, Designs and Patents Act 1988 (?)
- Users may not further distribute the material nor use it for the purposes of commercial gain.

Where a licence is displayed above, please note the terms and conditions of the licence govern your use of this document.

When citing, please reference the published version.

Take down policy

While the University of Birmingham exercises care and attention in making items available there are rare occasions when an item has been uploaded in error or has been deemed to be commercially or otherwise sensitive.

If you believe that this is the case for this document, please contact UBIRA@lists.bham.ac.uk providing details and we will remove access to the work immediately and investigate.

Metabolic Profiling Predicts Response to Anti-Tumor Necrosis Factor α Therapy in Patients With Rheumatoid Arthritis

Sabrina R. Kapoor,¹ Andrew Filer,² Martin A. Fitzpatrick,³
Benjamin A. Fisher,⁴ Peter C. Taylor,⁵ Christopher D. Buckley,¹ Iain B. McInnes,⁶
Karim Raza,¹ and Stephen P. Young³

Objective. Anti-tumor necrosis factor (anti-TNF) therapies are highly effective in rheumatoid arthritis (RA) and psoriatic arthritis (PsA), but a significant number of patients exhibit only a partial or no therapeutic response. Inflammation alters local and systemic metabolism, and TNF plays a role in this. We undertook

this study to determine if the patient's metabolic fingerprint prior to therapy could predict responses to anti-TNF agents.

Methods. Urine was collected from 16 RA patients and 20 PsA patients before and during therapy with infliximab or etanercept. Urine metabolic profiles were assessed using nuclear magnetic resonance spectroscopy. Discriminating metabolites were identified, and the relationship between metabolic profiles and clinical outcomes was assessed.

Results. Baseline urine metabolic profiles discriminated between RA patients who did or did not have a good response to anti-TNF therapy according to European League Against Rheumatism criteria, with a sensitivity of 88.9% and a specificity of 85.7%, with several metabolites contributing (in particular histamine, glutamine, xanthurenic acid, and ethanolamine). There was a correlation between baseline metabolic profiles and the magnitude of change in the Disease Activity Score in 28 joints from baseline to 12 months in RA patients ($P = 0.04$). In both RA and PsA, urinary metabolic profiles changed between baseline and 12 weeks of anti-TNF therapy. Within the responders, urinary metabolite changes distinguished between etanercept and infliximab treatment.

Conclusion. The clear relationship between urine metabolic profiles of RA patients at baseline and their response to anti-TNF therapy may allow development of novel approaches to the optimization of therapy. Differences in metabolic profiles during treatment with infliximab and etanercept in RA and PsA may reflect distinct mechanisms of action.

The introduction of anti-tumor necrosis factor α (anti-TNF α) treatment has revolutionized the

The clinical study, from which the urine samples were derived, was supported by an unrestricted grant from Merck/MSD to Drs. Filer, Fisher, Taylor, Buckley, and McInnes. Dr. Kapoor's work was supported by an Arthritis Research UK Clinical PhD Studentship (grant 18552). Mr. Fitzpatrick's work was supported by a Wellcome Trust PhD Studentship (grant 14844). The nuclear magnetic resonance data were acquired at the Henry Wellcome Building for Biomolecular Nuclear Magnetic Resonance Spectroscopy at the University of Birmingham; the facility is funded by the Wellcome Trust (grant 066490/Z/01/A).

¹Sabrina R. Kapoor, MBChB, MSc, MRCP, Christopher D. Buckley, MBBS, FRCP, DPhil, Karim Raza, MBChB, FRCP, PhD: University of Birmingham and the Sandwell and West Birmingham Hospitals NHS Trust, Birmingham, UK; ²Andrew Filer, MBChB, PhD: University of Birmingham and the University Hospitals Birmingham NHS Foundation Trust, Birmingham, UK; ³Martin A. Fitzpatrick, MRES, Stephen P. Young, PhD: University of Birmingham, Birmingham, UK; ⁴Benjamin A. Fisher, MD, MBBS: Kennedy Institute of Rheumatology and Imperial College, London, UK; ⁵Peter C. Taylor, MA, FRCP, PhD: Kennedy Institute of Rheumatology, University of Oxford, London, UK; ⁶Iain B. McInnes, FRCP, PhD: Institute of Infection, Immunity, and Inflammation and University of Glasgow, Glasgow, UK.

Drs. Kapoor and Filer contributed equally to this work. Drs. Raza and Young contributed equally to this work.

Dr. Taylor has received consulting fees (less than \$10,000) as well as research grants from Merck. Dr. McInnes has received consulting fees, speaking fees, and/or honoraria from Pfizer, Abbott, and MSD (less than \$10,000 each). Dr. Raza has received consulting fees, speaking fees, and/or honoraria from UCB and Pfizer (less than \$10,000 each).

Address correspondence to Stephen P. Young, PhD, Centre for Translational Inflammation Research, School of Immunity and Infection, College of Medical and Dental Sciences, University of Birmingham Research Laboratories, Queen Elizabeth Hospital, Birmingham B15 2WD, UK. E-mail: s.p.young@bham.ac.uk.

Submitted for publication July 10, 2012; accepted in revised form February 26, 2013.

management of rheumatoid arthritis (RA) (1–4). Several agents are available within this class, but response rates are imperfect; only 26–42% of patients achieve a good European League Against Rheumatism (EULAR) response (5) within 6 months (6–8). Given the high cost of these therapies and implications for disease progression in nonresponders waiting 3–6 months for clinical reassessment, the ability to predict treatment responses at baseline is an important goal.

The etiology of RA is not fully understood but involves both genetic and environmental factors. In addition to synovitis there are widespread systemic effects mediated by proinflammatory cytokines that affect metabolism. Muscle wasting is a common feature of RA and its extent is associated with RA disease activity (9), but low body mass index is uncommon as fat mass is preserved or even increased (10). The extent of the metabolic changes and the types of metabolites seen may therefore be good markers of cytokine-mediated inflammatory processes in RA.

Several studies have used metabolomic analysis in patients and animal models of inflammatory disease (11–15). Given the integrated nature of systemic metabolism, the analysis of multiple metabolites may provide a better understanding of the disease-associated changes. Metabolomic analysis, based on nuclear magnetic resonance (NMR) spectroscopy of biofluids, can be used to identify a broad range of metabolites simultaneously. Using this approach, the identification of several metabolites in cancer and cardiovascular disease has provided insights into disease mechanisms and has highlighted their potential as biomarkers of disease activity and response to therapy (16–18).

Systemic changes in many low molecular weight metabolites are reflected by their levels in urine, and, indeed, metabolomic analysis of urine samples has been used in inflammatory conditions such as inflammatory bowel disease (IBD) (19–21), to successfully distinguish different types of IBD, and to identify the presence of ongoing intestinal inflammation. Metabolomic profiles have also been shown to be altered during therapy (16). Consequently, we sought to assess whether metabolomic profiles in the urine may have a role in predicting responses to TNF antagonists in patients with RA and psoriatic arthritis (PsA).

PATIENTS AND METHODS

Patients. Patients were part of a multicenter study (Glasgow Royal Infirmary [PsA patients only], Queen Elizabeth Hospital, Birmingham [PsA patients only], and Charing

Cross Hospital, London [RA patients only]) comparing responses to infliximab and etanercept. All patients were age ≥ 18 years. RA patients were required to fulfill the 1987 revised classification criteria of the American College of Rheumatology (22), to be positive for rheumatoid factor (RF) and/or anti-cyclic citrullinated peptide (anti-CCP) antibodies, and to have a disease duration of ≥ 6 months and a Disease Activity Score in 28 joints (DAS28) of ≥ 4.0 (23). The PsA patients were required to have psoriasis at screening, ≥ 3 swollen and ≥ 3 tender peripheral joints, negativity for RF and anti-CCP antibodies, and a disease duration of ≥ 6 months. Treatment with at least 1 disease-modifying antirheumatic drug (DMARD) had failed for all patients, and all patients were treated with methotrexate at a dose of at least 7.5 mg weekly, stable for at least 4 weeks prior to commencing anti-TNF α therapy. No other DMARDs were allowed within the 4 weeks prior to commencing treatment, but prednisolone was allowed provided the dose remained stable and did not exceed 10 mg daily.

Participants (16 RA patients and 20 PsA patients) were randomly assigned to receive 3 mg/kg infliximab at weeks 0, 2, and 6 and then every 8 weeks until week 46, or to receive 25 mg etanercept twice weekly for 52 weeks. Therapy was kept stable for the first 3 months. After 3 months, therapy could be changed as required, including escalation of methotrexate therapy to 25 mg weekly in apparent nonresponders. Clinical data, including erythrocyte sedimentation rate, DAS28, and Health Assessment Questionnaire scores (24), were collected at baseline and monthly up to week 52. A good clinical response in RA was defined as a DAS28 of ≤ 3.2 and improvement in the DAS28 of > 1.2 after therapy (25). A good response in PsA was defined as an improvement in 2 factors (with at least 1 being a joint count) with worsening in none of the following 4 factors: patient's global assessment of disease activity, physician's global assessment of disease activity, tender joint count, and swollen joint count (26). Random urine samples were collected from the patients at baseline and at 12 weeks and were snap-frozen and stored at -80°C . The study was conducted in compliance with the Declaration of Helsinki, and ethical approval was obtained from the West Glasgow Ethics Committee. All subjects gave written informed consent.

Metabolomic analysis. After thawing, urine samples (1 ml) were centrifuged at 13,000g for 5 minutes, and samples were prepared using a standard protocol (27). Briefly, urine was buffered with phosphate buffer (100 mM), brought to concentrations of 10% D₂O and 0.5 mM TMSP, and the pH was adjusted to 7.0 twice over 30 minutes. The sample was then centrifuged and loaded into a standard 5-mm NMR tube for spectroscopy.

One-dimensional (1-D) ¹H spectra were acquired at 300°K using a standard spin-echo pulse sequence with water suppression using excitation sculpting on a Bruker DRX 500 MHz NMR spectrometer equipped with a cryoprobe. Samples were processed and data were calibrated with respect to the TMSP signal. Spectra were read into Prometab (28) (custom written software in MatLab 7; MathWorks) and were truncated to a range of 0.8–10.0 parts per million. Spectra were segmented into 0.005 ppm (2.5 Hz) chemical shift “bins,” and the spectral areas within each bin were integrated. Spectra were corrected for baseline offset and then normalized to a total spectral area of unity, and a generalized log transforma-

tion was applied (28). Binned data were then compiled into a matrix, with each row representing an individual sample.

Measurement of metabolites. Glutamine levels were measured in the urine samples using high-performance ion-exchange chromatography. Xanthurenic acid levels were measured using a fluorometric method (29).

Statistical analysis. The data bins from groups of spectra were mean-centered and then assessed using 3 techniques. First, partial least-squares discriminant analysis (PLS-DA) was used to perform supervised clustering of samples using PLS_Toolbox (version 5.8; Eigenvector Research) in MatLab (release 2009a). PLS-DA was cross-validated using Venetian blinds (30), a method that reassigns randomly selected blocks of data to the PLS-DA model to determine the accuracy of the model in correctly assigning class membership. Second, GALGO, a package available in the statistical environment R, was used to further model the relationship between good responders and those who did not respond well using a genetic algorithm search procedure coupled to statistical modeling methods for supervised classification (31). The results of GALGO analyses are presented as principal components analysis (PCA) plots, where the x- and y-axes represent first and second principal components providing the greatest variation between samples and the next largest unrelated variation, respectively. GALGO analysis was cross-validated using K-fold cross-validation, where the original sample is randomly partitioned into subsamples and each observation is used for both training and validation. Finally, we used partial least-squares regression, a regression method that identifies which metabolites can predict a continuous variable. This analysis yields r^2 , a measure of the goodness-of-fit of the linear regression, while permutation testing assessed the significance of this prediction.

Lists of metabolites providing the greatest discrimination between groups were then identified for each technique. Using multivariate analyses, peaks with large weightings were identified from the PLS-DA weightings plot. Metabolites were identified using these peaks. GALGO analysis produces a list of “bins” of ranked importance which contribute to the separation between the groups. The partial least-squares regression model represents the 90 “bins” or regions of the spectra which had the greatest influence on the correlation with the change in DAS28. These bins were used to identify the discriminatory metabolites. An NMR database (Human Metabolome Database version 2.5) and Chemomx NMR suite were used to identify the metabolites.

RESULTS

Prediction of response to anti-TNF therapy. After 12 months of anti-TNF therapy, RA patients were divided into 2 groups according to their response, as determined by EULAR criteria (Table 1). Response to anti-TNF therapy was also assessed at 3 months, but only 4 patients had a good response (as determined by EULAR criteria) at this stage. Only 1 PsA patient did not respond to treatment with a TNF antagonist accord-

ing to the predefined response criteria; it was therefore not possible to look at prediction of response in PsA.

NMR spectra of stored baseline urine samples were acquired and analyzed in order to identify differences between the 2 groups. Supervised PLS-DA analysis (Figure 1A) showed a clear distinction between patient groups segregated according to clinical response. This model distinguished samples with or without a good response with a sensitivity of 66.7% and a specificity of 57.1%. A weightings plot, which indicates regions of the NMR spectra that contribute to this separation (Figure 1B), was used to identify the discriminatory metabolites responsible for the difference in response, and these are shown in Table 2.

The partial least-squares regression model represents the 90 “bins” or regions of the spectra that had the greatest influence on the correlation with the change in DAS28. The GALGO model identifies the bins that have the greatest influence on the separation. For the PLS-DA model, the metabolites were identified from the weightings plot, which indicates regions of the NMR spectra that contribute to the separation. The top 20 bins were identified using GALGO and partial least-squares regression and the metabolites identified from these 20 bins. From the PLS-DA weightings plot the top 20 peaks

Table 1. Baseline characteristics of rheumatoid arthritis patients, by response to anti-TNF therapy at 12 months*

	Good response to TNF antagonists (n = 7)	Not good response to TNF antagonists (n = 9)†
Age, years	50.0 ± 13.40	52.67 ± 12.83
Female, no. (%)	7 (100)	9 (100)
BMI, kg/m ²	26.16 ± 3.75	26.97 ± 5.64
Prednisolone, no. receiving	1	2
NSAIDs, no. receiving	4	4
Baseline methotrexate dose, mg/week	13.57 ± 4.76	15.83 ± 6.12
DAS28	6.041 ± 1.06	6.46 ± 0.91
CRP, mg/ml	21.31 ± 15.97	7.02 ± 7.97
RF positive, no.	6	8
Anti-CCP antibody positive, no.	6	8
Urinary albumin-to-creatinine ratio	1.60 ± 2.71	0.29 ± 0.45

* Except where indicated otherwise, values are the mean ± SD. Except for the C-reactive protein (CRP) level ($P = 0.03$ by unpaired t -test), there were no significant differences between the groups. Anti-TNF = anti-tumor necrosis factor; BMI = body mass index; NSAIDs = nonsteroidal antiinflammatory drugs; DAS28 = Disease Activity Score in 28 joints; RF = rheumatoid factor; anti-CCP = anti-cyclic citrullinated peptide.

† Corresponds to moderate and poor response, as determined by European League Against Rheumatism criteria.

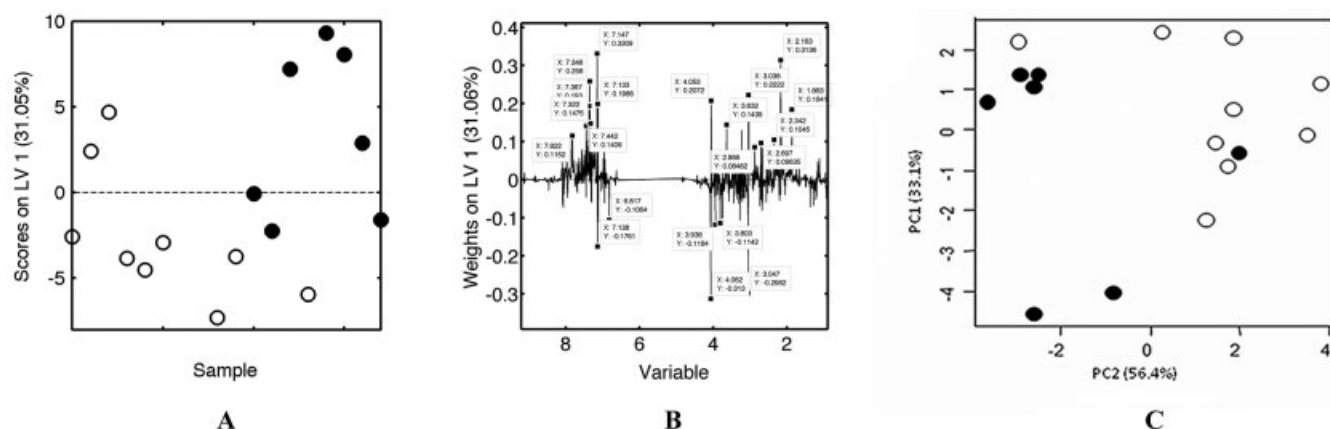


Figure 1. Metabolic fingerprinting distinguishes between baseline urine samples from rheumatoid arthritis (RA) patients who have good responses to tumor necrosis factor (TNF) antagonists at 12 months and those who do not. **A**, One-dimensional ^1H nuclear magnetic resonance (NMR) spectra of baseline urine samples from RA patients with (solid circles) or without (open circles) a good response to TNF antagonists at 12 months were subjected to supervised analysis (partial least-squares discriminant analysis [PLS-DA]). The sample number is plotted against the score in (contribution to) latent variable 1 (LV1), and the percent value on the y-axis shows the proportion of the total variance in the data captured by LV1 in the PLS-DA model. The horizontal dashed line at zero segregates samples with positive and negative scores. **B**, Weightings plot of the PLS-DA model of spectral data from baseline urine samples from the RA patients who did or did not have a good response at 12 months highlights major regions of the spectra that distinguish between the sample groups. The major discriminating peaks are labeled with their chemical shift (in parts per million) on the x-axis and LV1 weighting on the y-axis. The percent value on the y-axis indicates the proportion of the total variance in the data captured by LV1. **C**, One-dimensional ^1H NMR spectra of baseline urine samples from RA patients with (solid circles) or without (open circles) a good response to TNF antagonists at 12 months were subjected to principal components analysis using GALGO analysis. The percent values on the x and y axes indicate the proportion of the variance captured by each principal component (PC1 and PC2).

were identified, and the metabolites were identified from these.

GALGO analysis was then used to reanalyze the data, first in order to verify the results obtained using a

Table 2. Baseline urinary metabolites most strongly correlated with response to anti-TNF therapy using partial least-squares regression, GALGO, and PLS-DA models*

Rank \dagger	Metabolite (chemical shift[s], in ppm), PLS-DA model \ddagger	VIP value \S	Metabolite (chemical shift[s], in ppm), GALGO model	Metabolite (chemical shift[s], in ppm), partial least-squares regression model
1	\uparrow Histamine (7.15) \P	91.54	Trimethylamine (2.87)	Citrate (2.67, 2.53, 2.56)
2	\uparrow Glutamine (2.16, 2.34) \P	87.72	Thiamine (7.41)	Phosphocreatinine (3.04, 3.94) $\#$
3	\downarrow p-hydroxyphenylpyruvic acid (4.06, 7.14, 6.82, 7.12) $\#$	72.72	Histamine (7.24, 8.01, 8.00, 7.12) \P	Ethanolamine (3.16, 3.74) \P
4	\downarrow Phosphocreatine (3.05, 3.94) $\#$	60.58	Thymine (7.37, 7.35, 1.86) $\#$	Creatinine (4.05, 4.06, 3.05) $\#$
5	\uparrow Thymine (7.35, 1.86) $\#$	61.8	Ethanolamine (3.17, 3.80) \P	Histamine (7.13, 3.28, 7.15) \P
6	\uparrow Creatinine (3.04, 4.05) $\#$	50.58	Phenylacetic acid (7.29, 7.39, 7.30) $\#$	Glutamine (2.16) \P
7	\uparrow Xanthurenic acid (7.37, 7.13) \P	36.71	Glutamine (2.12, 2.13) \P	p-hydroxyphenylpyruvic acid (6.82, 6.8225, 4.06, 7.12) $\#$
8	\uparrow Phenylacetic acid (3.63, 7.44, 7.32) $\#$	21.48	Xanthurenic acid (6.96) \P	Dimethylamine (2.70)
9	\uparrow Xanthine (7.82) $\#$	12.68	Xanthine (7.90) $\#$	Xanthurenic acid (7.15) \P
10	\downarrow Ethanolamine (3.80) \P	7.59	Tartaric acid (4.38)	–
11	–	–	3-phosphoglyceric acid (4.14)	–

* The top 20 bins (partial least-squares regression and GALGO models) and peaks (partial least-squares discriminant analysis [PLS-DA] model) were identified; the metabolites these represent and their corresponding chemical shifts in parts per million are shown.

\dagger Extent of contribution to differentiation between responders and nonresponders to anti-tumor necrosis factor (anti-TNF) agents.

\ddagger \uparrow indicates up-regulation of metabolites in urine samples from patients who had a good response to TNF antagonists. \downarrow indicates down-regulation of metabolites in urine samples from patients who had a good response to TNF antagonists.

\S Variable importance of the projection (VIP) values were calculated using PLS-DA.

\P Identified by all 3 methods.

$\#$ Identified by 2 different methods.

further supervised analysis technique, and second to use the superior modeling power of the GALGO genetic algorithm, which removes irrelevant variables more effectively. The PCA plot yielded by GALGO analysis showed a clear distinction between RA patients segregated according to clinical response (Figure 1C). The cross-validation of this model was shown to distinguish samples from patients who would not have a good response and samples from patients who would have a good response with a greatly improved sensitivity of 88.9% and specificity of 85.7%. GALGO analysis was further used to identify the discriminatory metabolites responsible for the difference in response as shown in Table 2.

Finally, the relationship between baseline metabolite profiles and the change in DAS28 over 12 months was assessed using partial least-squares regression. This analysis was repeated 100 times with and without randomization of the NMR bin data. There was a significant association between the change in DAS28 and baseline RA metabolites ($P = 0.04$). Permutation testing with 90 NMR bins included (as optimized by forward selection) demonstrated that the regression model was statistically valid ($P < 0.01$).

There was a significant difference between the C-reactive protein (CRP) level of patients who responded to TNF antagonists and the CRP level of those who did not respond ($P = 0.03$). We therefore used partial least-squares regression to further analyze the relationship between CRP and baseline metabolites in order to investigate potential confounding variables; this did not reveal any significant association ($P = 0.52$), suggesting that the difference we found was independent of the inflammatory processes reflected in the CRP levels. Grouping the metabolite data into quartiles according to the CRP values also failed to separate patient groups on PCA or PLS-DA (data not shown). Previous studies have shown that patients with RA have subclinical nephropathy (32,33) and that the urinary albumin-to-creatinine ratio is a sensitive marker of disease activity in RA (32). We measured the albumin-to-creatinine ratio in the urine samples, and there was no significant difference in this ratio between patients who responded to TNF antagonists and those who did not ($P = 0.17$). We also performed regression analysis for metabolic profiles at baseline against the albumin-to-creatinine ratio, and this was not significant ($P = 0.31$), suggesting that the relationship we found between baseline urinary metabolic profiles and the DAS28 was independent of microalbuminuria.

Table 3. Characteristics of the rheumatoid arthritis and psoriatic arthritis patients, by treatment group*

	Patients receiving infliximab (n = 18)	Patients receiving etanercept (n = 16)
Age, years	48.6 ± 10.60	47.46 ± 14.78
Female, no. (%)	13 (72)	13 (81)
BMI, kg/m ²	28.43 ± 4.56	28.36 ± 9.33
Prednisolone, no. receiving	6	3
NSAIDs, no. receiving	10	9
DAS28 at baseline†	6.22 ± 0.95	6.35 ± 1.05

* Except where indicated otherwise, values are the mean ± SD. See Table 1 for definitions.

† Rheumatoid arthritis patients only.

Comparison of metabolites predicting response to therapy in RA. Metabolites that were associated with a change in the DAS28 are shown in Table 2. The metabolites histamine, glutamine, xanthurenic acid, and ethanolamine were identified by all 3 analytic methods. Furthermore, several metabolites were identified by at least 2 of the 3 different methods, including p-hydroxyphenylpyruvic acid, phosphocreatine, thymine, creatinine, phenylacetic acid, and xanthine. These findings cross-validate the analyses used. We were also able to identify glutamine and xanthurenic acid in the urine samples that were used for NMR analysis using ion-exchange chromatography and a fluorometric method, respectively. There was a good correlation between the NMR peak heights and the assayed levels of xanthurenic acid ($r = 0.73$ [Spearman's correlation coefficient], $P = 0.001$) and a strong trend in the results for glutamine ($r = 0.46$ [Spearman's correlation coefficient], $P = 0.07$), which helped to validate our interpretation of the NMR data. However, the assayed levels of glutamine and xanthurenic acid were not significantly higher in the urine samples from the patients who had a good response, which suggests that while these individual metabolites contribute strongly to the discrimination, the whole set of metabolites present in the fingerprints is needed to fully separate the groups.

Effect of TNF α antagonists on metabolite profiles. The details of the patients receiving etanercept and infliximab are shown in Table 3. We investigated the effect of anti-TNF therapy on metabolic profiles longitudinally, comparing baseline and 12-week (during therapy) urine samples using supervised PLS-DA analysis (sensitivity of 71.4% and specificity of 57.1% in RA and sensitivity and specificity of 61.1% in PsA) and GALGO analysis (sensitivity of 100% and specificity of 82.9% in RA and sensitivity of 71.8% and specificity of 69.5% in

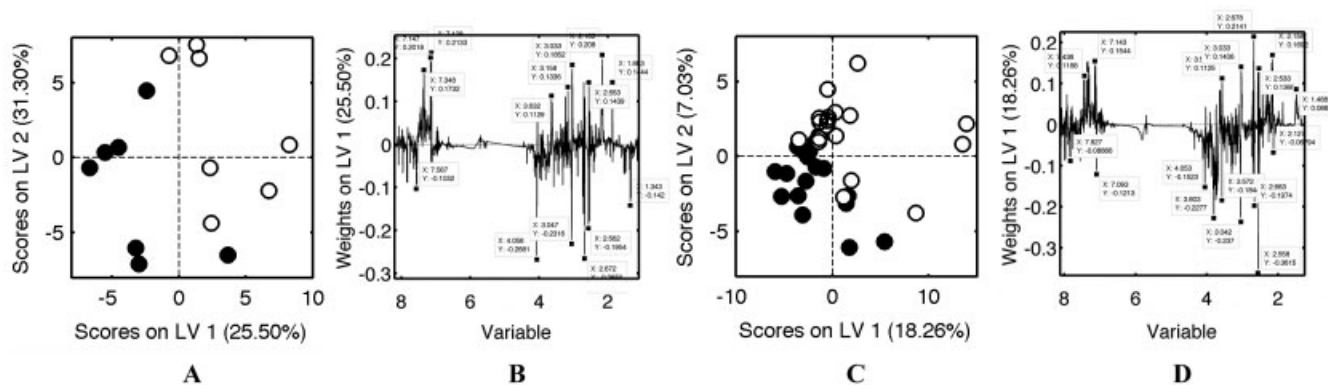


Figure 2. Metabolic fingerprinting enables identification of metabolites that are altered after treatment with TNF antagonists in patients with a good response. **A**, One-dimensional ^1H NMR spectra of urine samples obtained at baseline (open circles) and 12 weeks (solid circles) from RA patients with a good response to TNF antagonists at 12 months were subjected to supervised analysis (PLS-DA). The score in LV1 is plotted against the score in LV2, and the percent values on the x and y axes show the proportions of the total variance in the data captured by LV1 and LV2 in the PLS-DA model. The horizontal dashed lines at zero segregate samples with positive and negative scores. **B**, Weightings plot of the PLS-DA model of spectral data from urine samples obtained from RA patients who responded to TNF antagonists highlights major regions of the spectra that distinguish between the baseline and 12-week samples. The major discriminating peaks are labeled with their chemical shift (in parts per million) on the x-axis and LV weighting on the y-axis. The percent value on the y-axis indicates the proportion of the total variance in the data captured by LV1. **C**, One-dimensional ^1H NMR spectra of urine samples obtained at baseline (open circles) and 12 weeks (solid circles) from psoriatic arthritis (PsA) patients with a good response to TNF antagonists at 12 months were subjected to supervised analysis (PLS-DA). The score in LV1 is plotted against the score in LV2, and the percent values on the x and y axes show the proportions of the total variance in the data captured by LV1 and LV2 in the PLS-DA model. The horizontal dashed lines at zero segregate samples with positive and negative scores. **D**, Weightings plot of the PLS-DA model of spectral data from urine samples from PsA patients who responded to TNF antagonists highlights major regions of the spectra that distinguish between the baseline and 12-week samples. The major discriminating peaks are labeled with their chemical shift (in parts per million) on the x-axis and LV weighting on the y-axis. The percent value on the y-axis indicates the proportion of the total variance in the data captured by LV1. See Figure 1 for other definitions.

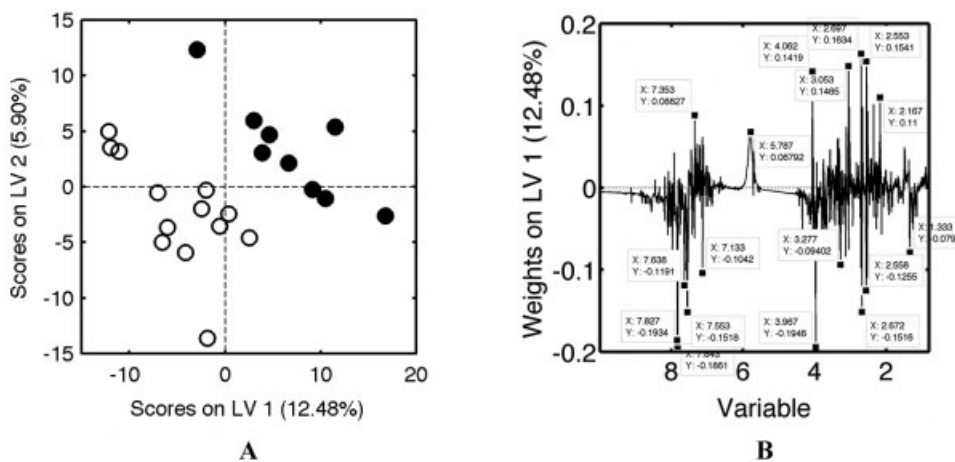


Figure 3. Metabolic fingerprinting of urine samples from RA patients and psoriatic arthritis (PsA) patients. **A**, One-dimensional ^1H NMR spectra of urine samples obtained 12 weeks after treatment with infliximab (open circles) or etanercept (solid circles) from RA and PsA patients with a good response to treatment were subjected to supervised analysis (PLS-DA). The score in LV1 is plotted against the score in LV2, and the percent values on the x and y axes show the proportions of the total variance in the data captured by LV1 and LV2 in the PLS-DA model. The horizontal dashed lines at zero segregate samples with positive and negative scores. **B**, Weightings plot of the PLS-DA model of spectral data from urine samples obtained after treatment with infliximab or etanercept from RA and PsA patients with a good response at 12 months highlights major regions of the spectra that distinguish between the sample groups. The major discriminating peaks are labeled with their chemical shift (in parts per million) on the x-axis and LV weighting on the y-axis. The percent value on the y-axis indicates the proportion of the total variance in the data captured by LV1. See Figure 1 for other definitions.

PsA). Using the weightings plot, we determined that in patients with RA who responded to TNF antagonists there were high levels of glutamine, phenylacetic acid, and histamine in the baseline urine samples and higher levels of methylamine and creatinine in the 12-week urine samples. Similar changes in metabolites were also seen in the urine samples from the patients with PsA who responded to TNF antagonists (Figure 2).

Combining RA and PsA patients with a good response, we assessed which urinary metabolites changed after 12 weeks of treatment with infliximab and with etanercept using supervised PLS-DA analysis (sensitivity of 84.6% and specificity of 55.6%) (Figure 3) and GALGO analysis (sensitivity of 86.2% and specificity of 100%). Using the weightings plot, we found that increases in hippuric acid, citrate, and lactic acid were seen with infliximab treatment and increases in choline, phenylacetic acid, urea, creatine, and methylamine were seen with etanercept treatment. Due to the small patient numbers, we could not investigate the effects of etanercept and infliximab in RA and PsA separately.

DISCUSSION

There were clear differences in the metabolic profiles of baseline urine samples of patients with RA who responded well to anti-TNF therapy compared with those who did not. This difference may be important as a novel predictor of responses to TNF antagonists. We have used 3 different data analysis methods to predict response, and each found that similar metabolites contributed. We have used GALGO analysis as well as PLS-DA analysis as it has been shown that genetic algorithms optimize the results by removing irrelevant variables, which dramatically improves the classification ability of models (34). All 3 methods identified histamine, glutamine, xanthurenic acid, and ethanolamine, while both PLS-DA and partial least-squares regression identified creatinine, p-hydroxyphenylpyruvic acid, and phosphocreatine, and both PLS-DA and GALGO identified phenylacetic acid and xanthine. Histamine, glutamine, phenylacetic acid, xanthine, xanthurenic acid, and creatinine were up-regulated in the urine samples from the patients who had a good response to therapy, while ethanolamine, p-hydroxyphenylpyruvic acid, and phosphocreatine were down-regulated.

One metabolite we identified as a strong discriminator in baseline urinary metabolites was histamine. Urinary histamine metabolites have also been suggested as a marker of disease activity in IBD (35), suggesting that it may be a generic marker of inflammatory pro-

cesses. Histamine is most obviously associated with mast cell-dependent processes such as allergy, and histamine has been identified as a constituent of synovial fluid in arthritis (36). Histologic examination of synovial infiltrates in early RA has shown mast cells to be present (37), suggesting that these cells could be the source of the discriminating histamine. However, an alternative but significant route for histamine generation is via histidine degradation. Histamine arises in many tissues by the decarboxylation of histidine (38). It has long been known that TNF α promotes cachexia associated with chronic inflammatory disease, and this cytokine is known to have direct effects in accelerating muscle breakdown, leading to the release of free amino acids including histidine (39). Consistent with this, levels of histidine have been shown to be considerably higher in patients with RA and patients with systemic lupus erythematosus (40) compared to levels in controls.

Several of the other metabolites that we observed were also associated with catabolic processes and tissue degradation; for example, glutamine, xanthurenic acid, and ethanolamine can result from tryptophan and other amino acid degradation pathways. Tryptophan has been shown to be down-regulated in the plasma of patients with ankylosing spondylitis (AS) compared with the plasma of controls (41). The release of tryptophan from its binding serum protein has been shown to correlate with improvement in disease activity in AS (41), and this may be the same in RA.

A previous metabolomic study has suggested that alterations in serum levels of amino acids may be a useful marker of the presence and severity of osteoarthritis in the knee (42). The urine markers that we found either may be indicators of joint-specific degradation processes or may result from the systemic muscle and tissue changes associated with chronic disease, many of which are mediated through TNF α .

Previous work has investigated predictors of response to TNF α antagonists. Analysis of patients in the British Society for Rheumatology Biologics Register found that treatment with methotrexate or nonsteroidal antiinflammatory drugs (NSAIDs) predicted response to TNF antagonists (43). All the patients in our study were receiving methotrexate, and there were an equal number of patients receiving NSAIDs who had a good response compared to those who did not. Smoking has been associated with a poor response to infliximab (43), but only 1 of our patients smoked. Another group has found that the presence of RF or anti-CCP antibodies is associated with a reduced response to TNF antagonists (44), but all of our RA patients were positive for RF

and/or anti-CCP antibodies. Baseline levels of TNF α may predict the dose of infliximab needed for optimal response (45), and other work has demonstrated that a combination of blood cytokines and autoantibodies can predict responses to etanercept (46). In our cohort there was a significant difference between CRP levels in patients who responded to TNF antagonists and those who did not. However, the partial least-squares regression analysis failed to find an association between CRP and baseline metabolites, suggesting that the association between baseline metabolites and response is independent of CRP.

Infliximab and etanercept alter metabolites in the urine differently, as there are clear differences in the metabolites at 12 weeks posttreatment. Increases in the metabolites hippuric acid, citrate, and lactic acid were associated with infliximab treatment, and increases in the metabolites choline, phenylacetic acid, urea, creatinine, and methylamine were associated with etanercept treatment. The presence of choline suggests that etanercept may alter lipid metabolism.

We have also shown that the same metabolites are altered in the urine samples from patients with RA and PsA who responded to TNF antagonists. It may therefore be that chronic inflammatory diseases respond by a common mechanism to TNF antagonists.

This is the first demonstration that metabolomic techniques using 1-D NMR spectra can predict outcome to anti-TNF therapy in patients with severe RA, providing a sensitivity and specificity for response that has potential clinical utility despite a small initial cohort of patients. Our findings are verified by repeat analysis using alternative statistical techniques. There is a pressing need to confirm and extend these findings in a larger cohort of patients, combining metabolomic analyses with CRP and cytokine and autoantibody analyses to develop tests that can predict response without the need for empirical treatment, bringing closer the era of individually tailored therapy.

AUTHOR CONTRIBUTIONS

All authors were involved in drafting the article or revising it critically for important intellectual content, and all authors approved the final version to be published. Dr. Young had full access to all of the data in the study and takes responsibility for the integrity of the data and the accuracy of the data analysis.

Study conception and design. Kapoor, Filer, Fisher, Taylor, Buckley, McInnes, Raza, Young.

Acquisition of data. Kapoor, Filer, Fisher, Taylor, Buckley, McInnes, Young.

Analysis and interpretation of data. Kapoor, Filer, Fitzpatrick, Fisher, Raza, Young.

ROLE OF THE STUDY SPONSOR

Merck/MSD had no role in the study design or in the collection, analysis, or interpretation of the data, the writing of the manuscript, or the decision to submit the manuscript for publication. Publication of this article was not contingent upon approval by Merck/MSD.

REFERENCES

1. Maini R, St Clair EW, Breedveld F, Furst D, Kalden J, Weisman M, et al. Infliximab (chimeric anti-tumour necrosis factor α monoclonal antibody) versus placebo in rheumatoid arthritis patients receiving concomitant methotrexate: a randomised phase III trial. *Lancet* 1999;354:1932–9.
2. Spencer-Green G. Etanercept (Enbrel): update on therapeutic use. *Ann Rheum Dis* 2000;59 Suppl 1:i46–9.
3. Keystone EC, Kavanaugh AF, Sharp JT, Tannenbaum H, Hua Y, Teoh LS, et al. Radiographic, clinical, and functional outcomes of treatment with adalimumab (a human anti-tumor necrosis factor monoclonal antibody) in patients with active rheumatoid arthritis receiving concomitant methotrexate therapy: a randomized, placebo-controlled, 52-week trial. *Arthritis Rheum* 2004;50:1400–11.
4. Furst DE, Keystone EC, Braun J, Breedveld FC, Burmester GR, De Benedetti F, et al. Updated consensus statement on biological agents for the treatment of rheumatic diseases, 2010. *Ann Rheum Dis* 2011;70 Suppl 1:i2–36.
5. Van Gestel AM, Prevoo ML, van 't Hof MA, van Rijswijk MH, van de Putte LB, van Riel PL. Development and validation of the European League Against Rheumatism response criteria for rheumatoid arthritis: comparison with the preliminary American College of Rheumatology and the World Health Organization/International League Against Rheumatism criteria. *Arthritis Rheum* 1996;39:34–40.
6. Bennett AN, Peterson P, Zain A, Grumley J, Panayi G, Kirkham B. Adalimumab in clinical practice: outcome in 70 rheumatoid arthritis patients, including comparison of patients with and without previous anti-TNF exposure. *Rheumatology (Oxford)* 2005;44:1026–31.
7. Bazzani C, Filippini M, Caporali R, Bobbio-Pallavicini F, Favalli EG, Marchesoni A, et al. Anti-TNF α therapy in a cohort of rheumatoid arthritis patients: clinical outcomes. *Autoimmun Rev* 2009;8:260–5.
8. Rau R. Have traditional DMARDs had their day? Effectiveness of parenteral gold compared to biologic agents. *Clin Rheumatol* 2005;24:189–202.
9. Summers GD, Metsios GS, Stavropoulos-Kalinoglou A, Kitas GD. Rheumatoid cachexia and cardiovascular disease. *Nat Rev Rheumatol* 2010;6:445–51.
10. Summers GD, Deighton CM, Rennie MJ, Booth AH. Rheumatoid cachexia: a clinical perspective. *Rheumatology (Oxford)* 2008;47:1124–31.
11. Lin HM, Edmunds SJ, Helsby NA, Ferguson LR, Rowan DD. Nontargeted urinary metabolite profiling of a mouse model of Crohn's disease. *J Proteome Res* 2009;8:2045–57.
12. Bezabeh T, Somorjai RL, Smith IC. MR metabolomics of fecal extracts: applications in the study of bowel diseases. *Magn Reson Chem* 2009;47:S54–61.
13. Marchesi JR, Holmes E, Khan F, Kochhar S, Scanlan P, Shanahan F, et al. Rapid and noninvasive metabonomic characterization of inflammatory bowel disease. *J Proteome Res* 2007;6:546–51.
14. Young SP, Nessim M, Falciani F, Trevino V, Banerjee SP, Scott RA, et al. Metabolomic analysis of human vitreous humor differentiates ocular inflammatory disease. *Mol Vis* 2009;15:1210–7.
15. Sinclair AJ, Viant MR, Ball AK, Burdon MA, Walker EA, Stewart PM, et al. NMR-based metabolomic analysis of cerebrospinal fluid

- and serum in neurological diseases—a diagnostic tool? *NMR Biomed* 2010;23:123–32.
16. Pan XY, Wilson M, Mirbahai L, McConville C, Arvanitis TN, Griffin JL, et al. In vitro metabolomic study detects increases in UDP-GlcNAc and UDP-GalNAc, as early phase markers of cisplatin treatment response in brain tumor cells. *J Proteome Res* 2011;10:3493–500.
 17. Sreekumar A, Poisson LM, Rajendiran TM, Khan AP, Cao Q, Yu JD, et al. Metabolomic profiles delineate potential role for sarcosine in prostate cancer progression. *Nature* 2009;457:910–4.
 18. Brindle JT, Antti H, Holmes E, Tranter G, Nicholson JK, Bethell HW, et al. Rapid and noninvasive diagnosis of the presence and severity of coronary heart disease using ¹H-NMR-based metabolomics [published erratum appears in *Nat Med* 2003;9:477]. *Nat Med* 2002;8:1439–44.
 19. Schicho R, Nazyrova A, Shaykhtudinov R, Duggan G, Vogel HJ, Storr M. Quantitative metabolomic profiling of serum and urine in DSS-induced ulcerative colitis of mice by ¹H NMR spectroscopy. *J Proteome Res* 2010;9:6265–73.
 20. Murdoch TB, Fu H, MacFarlane S, Sydora BC, Fedorak RN, Slupsky CM. Urinary metabolic profiles of inflammatory bowel disease in interleukin-10 gene-deficient mice. *Anal Chem* 2008;80:5524–31.
 21. Williams HR, Cox IJ, Walker DG, North BV, Patel VM, Marshall SE, et al. Characterization of inflammatory bowel disease with urinary metabolic profiling. *Am J Gastroenterol* 2009;104:1435–44.
 22. Arnett FC, Edworthy SM, Bloch DA, McShane DJ, Fries JF, Cooper NS, et al. The American Rheumatism Association 1987 revised criteria for the classification of rheumatoid arthritis. *Arthritis Rheum* 1988;31:315–24.
 23. Prevoo ML, van 't Hof MA, Kuper HH, van Leeuwen MA, van de Putte LB, van Riel PL. Modified disease activity scores that include twenty-eight-joint counts: development and validation in a prospective longitudinal study of patients with rheumatoid arthritis. *Arthritis Rheum* 1995;38:44–8.
 24. Fries JF, Spitz P, Kraines RG, Holman HR. Measurement of patient outcome in arthritis. *Arthritis Rheum* 1980;23:137–45.
 25. Van Gestel AM, Haagsma CJ, Riel PL. Validation of rheumatoid arthritis improvement criteria that include simplified joint counts. *Arthritis Rheum* 1998;41:1845–50.
 26. Clegg DO, Reda DJ, Meijas E, Cannon GW, Weisman MH, Taylor T, et al. Comparison of sulfasalazine and placebo in the treatment of psoriatic arthritis: a Department of Veterans Affairs cooperative study. *Arthritis Rheum* 1996;39:2013–20.
 27. Viant MR, Ludwig C, Rhodes S, Guenther UL, Allaway D. Validation of a urine metabolome fingerprint in dog for phenotypic classification. *Metabolomics* 2007;3:453–63.
 28. Viant MR. Improved methods for the acquisition and interpretation of NMR metabolomic data. *Biochem Biophys Res Commun* 2003;310:943–8.
 29. Liu M, Wang GR, Liu TZ, Tsai KJ. Improved fluorometric quantification of urinary xanthurenic acid. *Clin Chem* 1996;42:397–401.
 30. Chauchard F, Cogdill R, Roussel S, Roger JM, Bellon-Maurel V. Application of LS-SVM to non-linear phenomena in NIR spectroscopy: development of a robust and portable sensor for acidity prediction in grapes. *Chemometr Intell Lab Syst* 2004;71:141–50.
 31. Trevino V, Falciani F. GALGO: an R package for multivariate variable selection using genetic algorithms. *Bioinformatics* 2006;22:1154–6.
 32. Pedersen LM, Nordin H, Svensson B, Bliddal H. Microalbuminuria in patients with rheumatoid arthritis. *Ann Rheum Dis* 1995;54:189–92.
 33. Niederstadt C, Happ T, Tatsis E, Schnabel A, Steinhoff J. Glomerular and tubular proteinuria as markers of nephropathy in rheumatoid arthritis. *Rheumatology (Oxford)* 1999;38:28–33.
 34. Ramadan Z, Jacobs D, Grigorov M, Kochhar S. Metabolic profiling using principal component analysis, discriminant partial least squares, and genetic algorithms. *Talanta* 2006;68:1683–91.
 35. Winterkamp S, Weidenhiller M, Otte P, Stolper J, Schwab D, Hahn EG, et al. Urinary excretion of N-methylhistamine as a marker of disease activity in inflammatory bowel disease. *Am J Gastroenterol* 2002;97:3071–7.
 36. Buckley MG, Walters C, Wong WM, Cawley MI, Ren S, Schwartz LB, et al. Mast cell activation in arthritis: detection of α - and β -tryptase, histamine and eosinophil cationic protein in synovial fluid. *Clin Sci (Lond)* 1997;93:363–70.
 37. Tak PP, Smeets TJ, Daha MR, Kluin PM, Meijers KA, Brand R, et al. Analysis of the synovial cell infiltrate in early rheumatoid synovial tissue in relation to local disease activity. *Arthritis Rheum* 1997;40:217–25.
 38. Stifel FB, Herman RH. Histidine metabolism. *Am J Clin Nutr* 1971;24:207–17.
 39. Goodman MN. Tumor necrosis factor induces skeletal muscle protein breakdown in rats. *Am J Physiol* 1991;260:E727–30.
 40. Sittou NG, Dixon JS, Bird HA, Wright V. Serum biochemistry in rheumatoid arthritis, seronegative arthropathies, osteoarthritis, SLE and normal subjects. *Br J Rheumatol* 1987;26:131–5.
 41. Gao P, Lu C, Zhang F, Sang P, Yang D, Li X, et al. Integrated GC-MS and LC-MS plasma metabolomics analysis of ankylosing spondylitis. *Analyst* 2008;133:1214–20.
 42. Zhai G, Wang-Sattler R, Hart DJ, Arden NK, Hakim AJ, Illig T, et al. Serum branched-chain amino acid to histidine ratio: a novel metabolomic biomarker of knee osteoarthritis. *Ann Rheum Dis* 2010;69:1227–31.
 43. Hyrich KL, Watson KD, Silman AJ, Symmons DP, and the BRS Biologics Register. Predictors of response to anti-TNF- α therapy among patients with rheumatoid arthritis: results from the British Society for Rheumatology Biologics Register. *Rheumatology (Oxford)* 2006;45:1558–65.
 44. Potter C, Hyrich KL, Tracey A, Lunt M, Plant D, Symmons DP, et al. Association of rheumatoid factor and anti-cyclic citrullinated peptide positivity, but not carriage of shared epitope or PTPN22 susceptibility variants, with anti-tumour necrosis factor response in rheumatoid arthritis. *Ann Rheum Dis* 2009;68:69–74.
 45. Takeuchi T, Miyasaka N, Tatsuki Y, Yano T, Yoshinari T, Abe T, et al. Baseline tumour necrosis factor α levels predict the necessity for dose escalation of infliximab therapy in patients with rheumatoid arthritis. *Ann Rheum Dis* 2011;70:1208–15.
 46. Hueber W, Tomooka BH, Batliwalla F, Li W, Monach PA, Tibshirani RJ, et al. Blood autoantibody and cytokine profiles predict response to anti-tumor necrosis factor therapy in rheumatoid arthritis. *Arthritis Res Ther* 2009;11:R76.