

# Lawrence Berkeley National Laboratory

## Lawrence Berkeley National Laboratory

### **Title**

Metagenome, metatranscriptome and single cell sequencing reveal microbial response to Deepwater Horizon oil spill

### **Permalink**

<https://escholarship.org/uc/item/4v46k6tf>

### **Author**

Mason, O.U.

### **Publication Date**

2012-06-20

Peer reviewed

# Metagenome, metatranscriptome and single-cell sequencing reveal microbial response to Deepwater Horizon oil spill

Olivia U Mason<sup>1,2</sup>, Terry C Hazen<sup>1,3</sup>, Sharon Borglin<sup>1</sup>, Patrick SG Chain<sup>4,5</sup>, Eric A Dubinsky<sup>1</sup>, Julian L Fortney<sup>1</sup>, James Han<sup>4,5</sup>, Hoi-Ying N Holman<sup>1</sup>, Jenni Hultman<sup>1</sup>, Regina Lamendella<sup>1</sup>, Rachel Mackelprang<sup>5</sup>, Stephanie Malfatti<sup>5,6</sup>, Lauren M Tom<sup>1</sup>, Susannah G Tringe<sup>5</sup>, Tanja Woyke<sup>5</sup>, Jizhong Zhou<sup>7,8</sup>, Edward M Rubin<sup>5</sup> and Janet K Jansson<sup>1,5</sup>

<sup>1</sup>Ecology Department, Lawrence Berkeley National Laboratory, Berkeley, CA, USA; <sup>2</sup>Department of Earth, Ocean and Atmospheric Science, Florida State University, Tallahassee, FL, USA; <sup>3</sup>Center for Environmental Microbiology, University of Tennessee, Knoxville, TN, USA; <sup>4</sup>Metagenomics Applications Team, Genome Science Group, Los Alamos National Laboratory, Los Alamos, NM, USA; <sup>5</sup>Department of Energy Joint Genome Institute, Walnut Creek, CA, USA; <sup>6</sup>Biosciences and Biotechnology Division, Lawrence Livermore National Laboratory, Livermore, CA, USA; <sup>7</sup>Department of Botany and Microbiology, Institute for Environmental Genomics, University of Oklahoma, Norman, OK, USA and <sup>8</sup>School of Environment, Tsinghua University, Beijing, China

The Deepwater Horizon oil spill in the Gulf of Mexico resulted in a deep-sea hydrocarbon plume that caused a shift in the indigenous microbial community composition with unknown ecological consequences. Early in the spill history, a bloom of uncultured, thus uncharacterized, members of the Oceanospirillales was previously detected, but their role in oil disposition was unknown. Here our aim was to determine the functional role of the Oceanospirillales and other active members of the indigenous microbial community using deep sequencing of community DNA and RNA, as well as single-cell genomics. Shotgun metagenomic and metatranscriptomic sequencing revealed that genes for motility, chemotaxis and aliphatic hydrocarbon degradation were significantly enriched and expressed in the hydrocarbon plume samples compared with uncontaminated seawater collected from plume depth. In contrast, although genes coding for degradation of more recalcitrant compounds, such as benzene, toluene, ethylbenzene, total xylenes and polycyclic aromatic hydrocarbons, were identified in the metagenomes, they were expressed at low levels, or not at all based on analysis of the metatranscriptomes. Isolation and sequencing of two Oceanospirillales single cells revealed that both cells possessed genes coding for n-alkane and cycloalkane degradation. Specifically, the near-complete pathway for cyclohexane oxidation in the Oceanospirillales single cells was elucidated and supported by both metagenome and metatranscriptome data. The draft genome also included genes for chemotaxis, motility and nutrient acquisition strategies that were also identified in the metagenomes and metatranscriptomes. These data point towards a rapid response of members of the Oceanospirillales to aliphatic hydrocarbons in the deep sea.

Keywords: Gulf oil spill; Deepwater Horizon; Oceanospirillales; single-cell genomics; metagenomics; metatranscriptomics

## Introduction

On 20 April 2010, the Deepwater Horizon oil rig exploded and sank, resulting in an unremitting flow of oil from April 2010 to July 2010 into the Gulf of Mexico, for a total of approximately 4.9 million barrels (779 million liters,  $\pm 10\%$ ) (Federal Interagency Solutions Group, 2010). The MC252 oil fraction was comprised of a complex mixture of hydrocarbons including saturated hydrocarbons

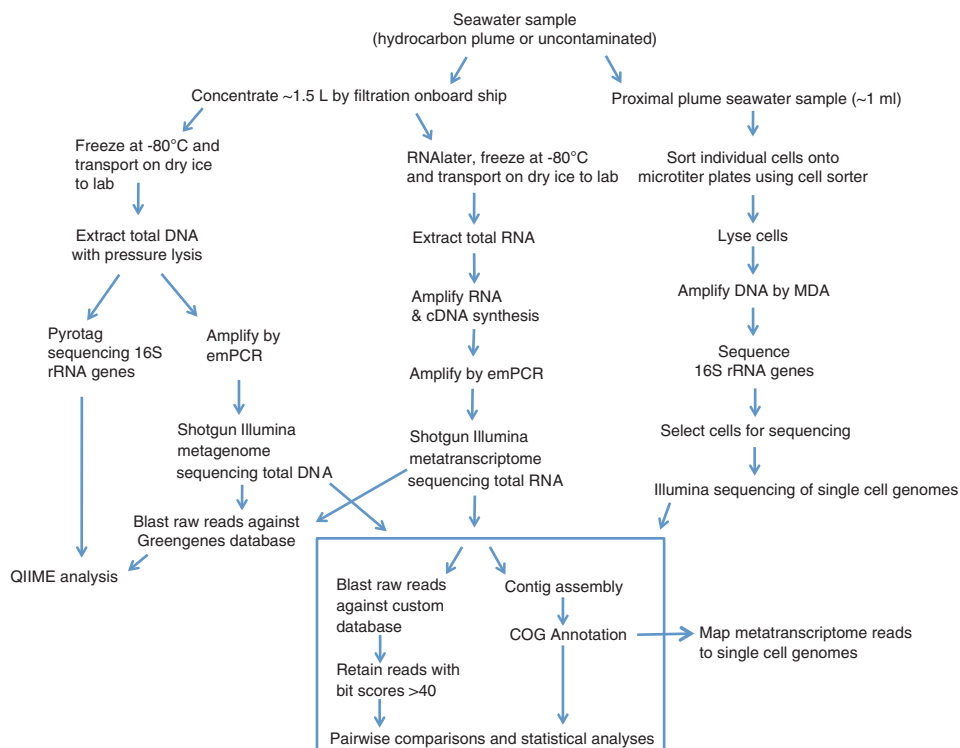
Correspondence: JK Jansson, Ecology Department, Lawrence Berkeley National Laboratory, MS 70A-3317, One Cyclotron Road, Berkeley, CA 94720, USA.  
E-mail: jrjansson@lbl.gov

(74%), aromatic hydrocarbons (including polycyclic hydrocarbons (PAHs)) which reached maximal concentrations of  $1200 \text{ mg l}^{-1}$  at the surface (Hazen *et al.*, 2010) (16%), and polar compounds (10%) (Reddy *et al.*, 2012). During the spill, an oil plume was detected at depths of approximately 1000–1300 m (Camilli *et al.*, 2010; Hazen *et al.*, 2010). The deep-sea oil plume was reported to contain gaseous components (Valentine *et al.*, 2010; Kessler *et al.*, 2011), as well as non-gaseous, more recalcitrant compounds such as benzene, toluene, ethylbenzene and total xylenes (BTEX) at concentrations ranging  $50\text{--}150 \text{ } \mu\text{g l}^{-1}$  (Camilli *et al.*, 2010; Hazen *et al.*, 2010). This influx of hydrocarbons had a significant impact on the indigenous microbial community structure (Hazen *et al.*, 2010; Valentine *et al.*, 2010; Kessler *et al.*, 2011; Redmond and Valentine, 2011), including enrichment of uncultivated members of the *Oceanospirillales* early in the spill history (Hazen *et al.*, 2010; Redmond and Valentine, 2011). The lack of a cultivated isolate of the *Oceanospirillales* from the plume precluded a clear understanding of the direct physiological and ecological consequences of the hydrocarbons on this group of microorganisms.

The documented shifts in the microbial community structure over time in response to the deep-sea plume of hydrocarbons have been shown by DNA-based methods such as cloning and sequencing of 16S rRNA genes (Hazen *et al.*, 2010; Valentine *et al.*, 2010; Kessler *et al.*, 2011; Redmond and Valentine,

2011) and microarray analysis of functional genes (Lu *et al.*, 2011). Cloning and sequencing revealed a clear temporal succession of bacteria in the deep-sea hydrocarbon plume from a community dominated by *Oceanospirillales* (Hazen *et al.*, 2010; Redmond and Valentine, 2011) to *Colwellia* and *Cycloclasticus* (Valentine *et al.*, 2010; Redmond and Valentine, 2011) and finally to methylotrophic bacteria (Kessler *et al.*, 2011). To date, however, no deep-sequencing approach has been used to analyze the microbial community structure, including rare members of the community, and their function. In addition, there is no information about what microorganisms were active or which functional genes were actually expressed in response to the oil spill.

Here we aimed to determine the specific roles of the *Oceanospirillales* that were enriched in the plume early in the spill history. In addition, we aimed to determine which functional genes and pathways were expressed in the deep-sea plume. To address these aims, we not only analyzed the functional gene repertoire in total DNA extracted from metagenomic samples but also extracted and sequenced total RNA metatranscriptomes to determine which genes were highly expressed and representative of active members of the community. In addition, to specifically characterize the functional roles of the dominant *Oceanospirillales*, we isolated and sequenced single-representative cells. For all of these analyses, we used the Illumina sequencing platform (Illumina, San Diego, CA, USA),



**Figure 1** Methods schematic. Each type of molecular approach—metagenomics, metatranscriptomics and single cell genomics—is shown, as are the subsequent, novel bioinformatics approaches that were used to analyze the various data sets.

which resulted in over 60 Gb of data. To analyze and integrate these large 'omics' data sets, including raw, unassembled reads, we used several novel bioinformatics approaches, which are outlined in Figure 1. For this study, we focused on samples that were collected during the oil spill between 27 and 31 May 2010 (Hazen *et al.*, 2010) for in-depth phylogenetic and functional analyses: two plume samples, one proximal (1.5 km from the wellhead) and one distal (11 km from the wellhead), and one uncontaminated sample collected at plume depth (40 km from the wellhead) (Supplementary Figure S1).

## Materials and methods

### *Sample collection*

From each station, 1–5 l of seawater were filtered through a 0.2- $\mu$ m diameter filter from the Gulf of Mexico during two monitoring cruises from 27 May 2010 to 2 June 2010 on the R/V Ocean Veritas and R/V Brooks McCall. Detailed information regarding sample collection can be found in Hazen *et al.* (2010).

### *DNA extraction*

DNA was extracted from microbial cells collected onto filters using a modified Miller method (Miller *et al.*, 1999), with the addition of a pressure lysis step to increase cell-lysis efficiency. One-half of each filter was placed into a Pressure Biosciences FT500 Pulse Tube (Pressure Biosciences, Easton, MA, USA). A total of 300  $\mu$ l of Miller phosphate buffer and 300  $\mu$ l of Miller SDS lysis buffer were added and mixed. A solution of 600  $\mu$ l phenol:chloroform:isoamyl alcohol (25:24:1) was then added. The samples were subjected to pressure cycling at 35 000 psi for 20 s and 0 psi for 10 s for a total of 20 cycles using the Barocycler NEP3229 (Pressure Biosciences). After pressure cycling, the sample material was transferred to a Lysing Matrix E tube (MP Biomedicals, Solon, OH, USA) and the samples were subjected to bead beating at 5.5  $\text{ms}^{-1}$  for 45 s in a FastPrep instrument (MP Biomedicals). The tubes were centrifuged at 16 000  $g$  for 5 min at 4 °C, 540  $\mu$ l of supernatant was transferred to a 2-ml tube and an equal volume of chloroform was added. The individual samples were mixed by inversion and then centrifuged at 10 000  $g$  for 5 min. A total of 400  $\mu$ l of the aqueous phase was transferred to another tube and two volumes of Solution S3 (MoBio, Carlsbad, CA, USA) were added and mixed by inversion. The rest of the clean-up procedures followed the instructions in the MoBio Soil DNA extraction kit. Samples were recovered in 60  $\mu$ l Solution S5 and stored at –20 °C.

### *16S rRNA gene sequencing and analysis*

16S rRNA gene sequences were amplified from the DNA extracts using the primer pair 926wF (5'-AAACTYAAKGAATTGRCGG-3') and 1392R

(Lane, 1991) as previously described (Kunin *et al.*, 2010). The reverse primer included a 5-bp barcode for multiplexing of samples during sequencing. Emulsion PCR and sequencing of the PCR amplicons was performed at DOE's Joint Genome Institute following the manufacturer's instructions for the Roche (Branford, CT, USA) 454 GS Titanium technology (Allgaier *et al.*, 2010). A total of 87 000 pyrotag sequences were obtained and analyzed using QIIME (Caporaso *et al.*, 2010a). Briefly, 16S rRNA gene sequences were clustered with uclust (Edgar, 2010) and assigned to operational taxonomic units (OTUs) with 97% similarity. Representative sequences from each OTU were aligned with Pynast (Caporaso *et al.*, 2010b) using the Greengenes (DeSantis *et al.*, 2006) core set. Taxonomy was assigned using the Greengenes 16S rRNA gene database (version 6 October 2010). As the number of sequence reads in each sample varied, the data set was rarified prior to alpha diversity calculations.

### *RNA extraction and amplification*

Immediately following sampling and filtration at the proximal sampling station, samples intended for RNA extractions were placed in RNAlater (Ambion, Foster City, CA, USA) to prevent RNA degradation. Samples were stored according to the manufacturer's protocol (in RNAlater at –80 °C) until the time of extraction. Total RNA was extracted from the proximal and distal plume stations, as well as from the uncontaminated sample from plume depth, as previously described (DeAngelis *et al.*, 2010). The quantity and quality of extracted RNA was checked using a Bioanalyzer (Agilent Technologies, Santa Clara, CA, USA). Specifically, the RNA integrity was verified by determining the RNA integrity number. For our samples, the RNA integrity number was ~9 on a scale of 1–10, with 10 indicating that no degradation had occurred. Insufficient RNA was obtained from the uncontaminated sample for downstream processing. Total RNA from the proximal and distal plume stations was amplified using the Message Amp II-Bacteria Kit (Ambion) following the manufacturer's instructions. First-strand synthesis of cDNA from the resulting antisense RNA was carried out with the SuperScript III First-Strand Synthesis System (Invitrogen, Carlsbad, CA, USA). The SuperScript Double-Stranded cDNA Synthesis Kit (Invitrogen) was used to synthesize double-stranded cDNA. cDNA was purified using a QIAquick PCR purification kit (Qiagen, Valencia, CA, USA). Poly(A) tails were removed by digesting purified DNA with *BpmI* for 3 h at 37 °C. Digested cDNA was purified with QIAquick PCR purification kit (Qiagen).

### *Emulsion PCR*

To increase yields required for sequencing, DNA and cDNA were amplified by emulsion PCR. A detailed

description of this method can be found in Blow *et al.* (2008). Briefly, DNA for metagenomic samples was sheared (cDNA was not sheared) using the Covaris S-Series instrument (Covaris, Woburn, MA, USA). DNA and cDNA were end-repaired using the End-It DNA End-Repair Kit (Epicentre Biotechnologies, Madison, WI, USA). End-repaired DNA and cDNA were then ligated with Illumina Paired End Adapters 1 and 2. For each sample, 10 ng was used for emulsion PCR. Emulsion PCR reagents and thermal cycler protocols were as previously described (Blow *et al.*, 2008). Amplified products were cleaned with a PCR mini-elute column (Qiagen), visualized and ~300 bp fragments were excised from a 2% agarose gel.

### Sequencing

Metagenomic shotgun sequencing libraries of the samples were sequenced using the Illumina GAIIX 2 × 114 bp pair-end technology. The Illumina sequencing platform was used to generate 14–17 Gb of sequence data per sample.

cDNA was sequenced using the Illumina GAIIX sequencing platform. cDNA was quantified and clustered accordingly onto one lane of a flow cell on Illumina's cBot Cluster Generation System. After cluster generation, the flow cell was transferred to a GAIIX and was sequenced for 100 cycles for read 1. Then, turnaround chemistry was performed by the paired-end module, which prepared the flow cell for read 2 sequencing. Another 100 cycles of sequencing followed, resulting in 100 bp paired-end reads.

### Sequence assembly and analysis

Raw Illumina metagenomic reads (~113 bp in length) were trimmed using a minimum quality cutoff of 3. Both trimmed and untrimmed reads were kept for further assembly. Paired-end Illumina reads were assembled using SOAPdenovo (<http://soap.genomics.org.cn/soapdenovo.html>) at a range of Kmers (21, 23, 25, 27, 29 and 31) for both trimmed and untrimmed reads. Default settings for all SOAPdenovo assemblies were used (flags: -d 1 and -R). Contigs generated by each assembly (12 total contig sets) were merged using a combination of in-house Perl script. Contigs were then sorted into two pools based on length. Contigs <1800 bp were assembled using Newbler (Life Technologies, Carlsbad, CA, USA) in an attempt to generate larger contigs (flags: -tr, -rip, -mi 98 and -ml 60). All assembled contigs >1800 bp, as well as the contigs generated from the final Newbler run, were combined using minimus 2 (AMOS, <http://sourceforge.net/projects/amos>) and the default parameters for joining. Minimus2 is an overlap-based assembly tool that is useful for combining low numbers of longer sequences, as are found in assembled contigs. Assembly of the total of 368 million paired-end quality filtered metagenome sequence reads that averaged 113 bp in length (45 Gb) resulted in 1.1

million contigs. These contigs had an average N50 length of 382 bp (N50 is the length of the smallest contig in the set of largest contigs that have a combined length that represents at least 50% of the assembly (Miller *et al.*, 2010)). Assembled data was annotated in IMG (Markowitz *et al.*, 2008). Cluster of Orthologous (COG) annotations for both plume samples and the uncontaminated sample, including average fold, were exported. A pairwise statistical comparison of COGs in each of the three samples was carried out using STAMP (Parks and Beiko, 2010). Raw Illumina metatranscriptomic reads (~100 bp in length) were assembled using the CLC Genomics Workbench (version 4.0.3; CLC Bio, Cambridge, MA, USA). Paired-end reads were assembled using the following parameters: mismatch cost 2, insertions cost 3, deletion cost 3, length fraction 0.5 and similarity 0.8. The minimum contig length was set to 200 bp. Assembled metatranscriptomic data was annotated using CAMERA (v2.0.6.2) (Seshadri *et al.*, 2007).

### blastn

Single reads from each metagenomic and metatranscriptomic sample was searched against the Greengenes (DeSantis *et al.*, 2006) database of 16S rRNA genes using blastn with a bit score cutoff of >100. For each sequence, the blast result with the highest bit score was selected.

### tblastn

Raw metagenomic, metatranscriptomic and single-cell reads were searched against a subset of proteins (~12 000 archaeal and bacterial proteins) involved in hydrocarbon degradation from the GeoChip (He *et al.*, 2010) database. This database was selected because, to our knowledge, this is the only curated database of the nearly complete pathways for hydrocarbon degradation. Paracel blast was used with the tblastn algorithm, allowing all possible hits and using a bit score cutoff of >40. For each sequence, the blast result with the highest bit score was selected. Although putative and potential proteins were part of the overall database searched, only characterized proteins were included in the final data analysis and presentation. A pairwise statistical comparison of the results of the metagenomic and metatranscriptomic blast analyses was carried out using STAMP (Parks and Beiko, 2010), using the a two-sided Chi-square test (with Yates) statistic with the DP: asymptotic-CC confidence interval method and the Bonferroni multiple test correction. A *P*-value of >0.05 was used with a double-effect size filter (difference between proportions effect size <1.00 and a ratio of proportions effect size <2.00).

### Single-cell sorting, whole-genome amplification and screening

Cells were collected following the clean sorting procedures detailed by Rodrigue *et al.* (2009).

Briefly, single cells from the proximal plume water sample were sorted by the Cytopeia Influx Cell Sorter (BD Biosciences, Franklin Lakes, NJ, USA) into three 96-well plates containing 3  $\mu$ l of ultraviolet-treated TE. The cells were stained with SYBR Green I (Invitrogen) and illuminated by a 488-nm laser (Coherent Inc., Santa Clara, CA, USA). The sorting window was based on the size determined by side scatter and green fluorescence (531/40 bp filter). Single cells were lysed for 20 min at room temperature using alkaline solution from the Repli-G UltraFast Mini Kit (Qiagen) according to the manufacturer's instructions. After neutralization, the samples were amplified using the RepliPhi Phi29 reagents (Epicentre Biotechnologies). Each 50- $\mu$ l reaction contained Phi29 Reaction Buffer (1  $\times$  final concentration), 50  $\mu$ M random hexamers with the phosphorothioate bonds between the last two nucleotides at the 3' end d (IDT), 0.4 mM dNTP, 5% DMSO (Sigma, St Louis, MO, USA), 10 mM DTT (Sigma), 100 U Phi29 and 0.5 mM Syto 13 (Invitrogen). A mastermix of multiple displacement amplification (MDA) reagents minus the Syto 13 sufficient for a 96-well plate was ultraviolet-treated for 60 min for decontamination. Syto 13 was then added to the mastermix, which was added to the single cells for real-time MDA on the Roche LightCycler 480 for 17 h at 30  $^{\circ}$ C. All steps of single-cell handling and amplification were performed under most stringent conditions to reduce the introduction of contamination. Single-cell MDA products were screened using Sanger sequencing of 16S rRNA gene amplicons derived from each MDA product. A total of 16 *Oceanospirillales* cells were obtained. Three single-amplified genomes were identified as being 95% similar to the dominant *Oceanospirillales* OTU, and of high sequence quality (16S rRNA gene) and pursued for whole-genome sequencing.

#### *Single-cell Illumina sequencing, quality control and assembly*

Single-cell amplified DNA of three *Oceanospirillales* cells was used to generate normalized, indexed Illumina libraries. Briefly, 3  $\mu$ g of MDA product was sheared in 100  $\mu$ l using the Covaris E210 (Covaris) with the setting of 10% duty cycle, intensity 5 and 200 cycle per burst for 6 min per sample and the fragmented DNA purified using QIAquick columns (Qiagen) according to the manufacturer's instructions. The sheared DNA was end-repaired, A-tailed and ligated to the Illumina adaptors according to the Illumina standard paired-end protocol. The ligation product was purified using AMPure SPRI beads, then underwent normalization using the Duplex-Specific Nuclease Kit (Axxora, San Diego, CA, USA). The normalized libraries were then amplified by PCR for 12 cycles using a set of two indexed primers and the library pool was sequenced using an Illumina GAIIx sequencer according to the manufacturer's protocols (run mode 2  $\times$  150 bp). Approximately 2.5 Gb (16 797 846 reads) of sequence data was collected from the *Oceanospirillales*

single-cell genomes. The Illumina single-amplified genome data was quality controlled using GC content and blast analysis and no contamination was detectable in two of the single-amplified genomes, whereas the third single-amplified genome was excluded from the analysis due to the presence of contaminating sequences. Reads from these two single cells were assembled using Velvet (Zerbino and Birney, 2008). To estimate genome-sequence completeness, the annotated, assembled draft genome data was compared with core COGs for Proteobacteria and Gammaproteobacteria (number of identified core COGs/number of expected core COGs).

#### *Mapping and analysis*

Unassembled metatranscriptomic reads were mapped to the *Oceanospirillales* single-cell draft genome using the CLC Genomics Workbench (CLC bio), using the following parameters: mismatch cost 2, insertions cost 3, deletion cost 3, length fraction 0.5 and similarity 0.8. Assembled single-cell data was annotated using CAMERA (v2.0.6.2) (Seshadri *et al.*, 2007). The Interactive Pathways Explorer v2 (Letunic *et al.*, 2008) was used to map the assembled, annotated metatranscriptome with an assembled, annotated *Oceanospirillales* single-cell draft genome. Clustered regularly interspaced short palindromic repeat regions were identified in the draft genome using CRISPRfinder (Grissa *et al.*, 2007).

#### *Cell counts*

Cell counts were carried out as described in Hazen *et al.* (2010). Briefly, samples were preserved in 4% formaldehyde and stored at 4  $^{\circ}$ C until the time of analysis. Filtered cells were stained with Acridine Orange and imaged with a Zeiss Axioskop (Carl Zeiss, Inc., Oberkochen, Germany) microscope.

#### *Infrared spectromicroscopy and data processing*

Synchrotron radiation-based Fourier-transform infrared measurements and analyses were conducted at the infrared beamline of the Advanced Light Source (<http://infrared.als.lbl.gov/>) on thin layers of fresh samples. Samples consisted of 25 ml of seawater from the proximal plume station. A total of 10 subsamples were randomly collected using a glass pipette. Samples were placed between a gold-coated Si wafer and a SiN<sub>x</sub> window. Photons emitted over a mid-infrared wavenumber range of 4000 to 650 cm<sup>-1</sup> were focused through the samples by the Nicolet Nic-Plan IR microscope (with a numerical aperture objective of 0.65), which was coupled to a Nicolet Magna 760 FTIR bench (Thermo Scientific Inc., Waltham, MA, USA). The entire view-field was 200  $\times$  150  $\mu$ m<sup>2</sup>, which was typically divided into equal-sized 2  $\times$  2  $\mu$ m<sup>2</sup> squares before raster scanning.

The synchrotron radiation-based Fourier-transform infrared transmittance spectra at each position were collected using a single-element mercury cadmium telluride detector at a spectral resolution of  $4\text{ cm}^{-1}$  with 32 co-added scans and a peak position accuracy of  $1/100\text{ cm}^{-1}$ . In transmittance, the synchrotron infrared beam transmitted through the cells, reflected off the gold-coated surface and then transmitted through the sample a second time before reaching the detector. Background spectra were acquired from neighboring locations without any cells and used as reference spectra for both samples and standards to remove background  $\text{H}_2\text{O}$  and  $\text{CO}_2$  absorptions. All synchrotron radiation-based Fourier-transform infrared transmittance spectra were subjected to an array of data preprocessing and processing calculations using Thermo Electron's Omnic version 7.3. The processing includes the computation conversion of transmittance to absorbance, spectrum baseline removal and univariate analysis. In the univariate analysis, the calculated infrared absorbance at each wavenumber in the mid-infrared region can also be related to the relative concentration of a particular chemical component through the Beer–Lambert Law. Because analysis of each spectral absorption band provides a single absorption value (representing the relative abundance of a chemical component), we also constructed two-dimensional images to visualize the relative abundance of petroleum products and microbial biomolecules.

#### Hydrocarbon analysis

The profile of Macondo crude oil (collected on 22 May 2010 directly from the Discovery Enterprise drill ship located above the wellhead) was determined by gas chromatography–mass spectrometry using an Agilent 6890N (Agilent Technologies). Triplicate samples of  $0.2\text{ }\mu\text{l}$  of raw oil were directly injected to the column with no sample cleanup. This method was used to enable detection of low-molecular weight compounds that would be lost during sample processing or masked due to interference from solvent peaks. The Agilent 6890N was equipped with a 5972 mass selective detector and operated in SIM/SCAN mode. The injection temperature was  $250\text{ }^\circ\text{C}$ , detector temperature was  $300\text{ }^\circ\text{C}$  and column used was 60 m Agilent HP-1MS with a flow rate of  $2\text{ ml min}^{-1}$ . The oven temperature program included a  $50\text{ }^\circ\text{C}$  hold for 3 min ramped to  $300\text{ }^\circ\text{C}$  at  $4\text{ }^\circ\text{C min}^{-1}$  with a final 10-min hold at  $300\text{ }^\circ\text{C}$ . Compound identification was determined from selective ion monitoring coupled with comparison with the known standards and compound spectra in the NIST 08MS library. Compounds were reported as fractions of total oil in Supplementary Figure S2 from averages of triplicate injections, the error bars indicating s.d.

Hydrocarbon concentrations in all samples (Supplementary Table S1) were determined from

water samples that were collected in the field and directly filtered through Sterivex filters ( $0.22\text{ }\mu\text{m}$ ; Millipore, Billerica, MA, USA) as described previously (Hazen *et al.*, 2010). Oil biomarkers from the plume samples matched to those observed from the Macondo well.

Volatile aromatic hydrocarbons were measured using USEPA (US Environmental Protection Agency) methods 5030/8260b on an Agilent 6890 GC with a 5973 mass spectrometer detector. Initial oven temperature  $10\text{ }^\circ\text{C}$ , initial time 3 min, ramp  $8\text{--}188\text{ }^\circ\text{C min}^{-1}$ , then  $16\text{--}220\text{ }^\circ\text{C min}^{-1}$  and hold for 9 min. Split ratio 25:1. Restek Rtx-VMS capillary column, 60 m length by  $250\text{ }\mu\text{m}$  diameter and  $1.40\text{ }\mu\text{m}$  film. Scan  $50\text{--}550\text{ m z}^{-1}$ .

## Results and discussion

Throughout our analyses, we found differences in the microbial community structures of the samples collected from the two plume sites due to the differences in the amount of time the respective indigenous deep-sea microbes were exposed to hydrocarbons. Our samples were collected during the Deepwater Horizon spill within 24 h following the failed top kill effort (29 May 2010; proximal station). This effort resulted in a large influx of hydrocarbons into the deep sea on the dates that we sampled. Because of the movement of water in marine currents, we took the current velocity into account ( $6.7\text{ km per day}$ ; Camilli *et al.*, 2010; Hazen *et al.*, 2010) when calculating the length of time that microbes in our samples had been exposed to hydrocarbons from the oil spill. Based on these calculations, the microbial communities would have been exposed to hydrocarbons for approximately 6 h by the time the plume reached the proximal station, whereas by the time the plume reached the distal station, the microbes would have been exposed to hydrocarbons for approximately 39 h. Hydrocarbons were not detected in the uncontaminated sample collected from plume depth.

Analysis of our combined DNA sequence data (16S rRNA gene sequences from 454 'pyrotag sequencing' and 'total metagenomic DNA') revealed that the plume samples had a lower microbial diversity than samples outside the plume (Supplementary Figure S3 and Table 1), with an enrichment of *Oceanospirillales* (Figure 2 and Supplementary Tables S2 and S3), as previously reported (Hazen *et al.*, 2010; Redmond and Valentine, 2011). In the pyrotag data, one *Oceanospirillales* OTU comprised up to 80–90% of the proximal and distal plume communities, respectively, whereas it comprised only 3% of the total community in the uncontaminated sample (Figure 2 and Supplementary Table S2). Similarly, in the metagenome data, the *Oceanospirillales* comprised  $>60\%$  of both plume samples, compared with 5% in the uncontaminated sample in the metagenome

data (Figure 2 and Supplementary Table S3). This observed bloom of *Oceanospirillales* corresponded with an increase in bacterial cell densities in

the plume from  $5.47 \pm 2.68 \times 10^3$  cells per ml in the uncontaminated sample to  $1.44 \pm 0.47 \times 10^5$  cells per ml in the proximal plume and  $2.68 \pm 0.48 \times 10^5$  cells

**Table 1** Diversity metrics of rarified bacterial and archaeal 16S rRNA 454-pyrotag sequences

Sample	Chao1 <sup>a</sup>	Chao1 (lower bound) <sup>b</sup>	Chao1 (upper bound) <sup>b</sup>	ACE <sup>c</sup>	Simpson <sup>d</sup>	Singletons <sup>e</sup>	Doubletons <sup>e</sup>
Distal plume	394.53	273.32	628.27	443.80	0.58	91.78	15.96
Proximal plume	806.71	626.34	1093.50	911.07	0.57	198.93	38.47
Uncontaminated	1722.58	1507.22	2007.66	1849.08	0.96	481.80	126.04

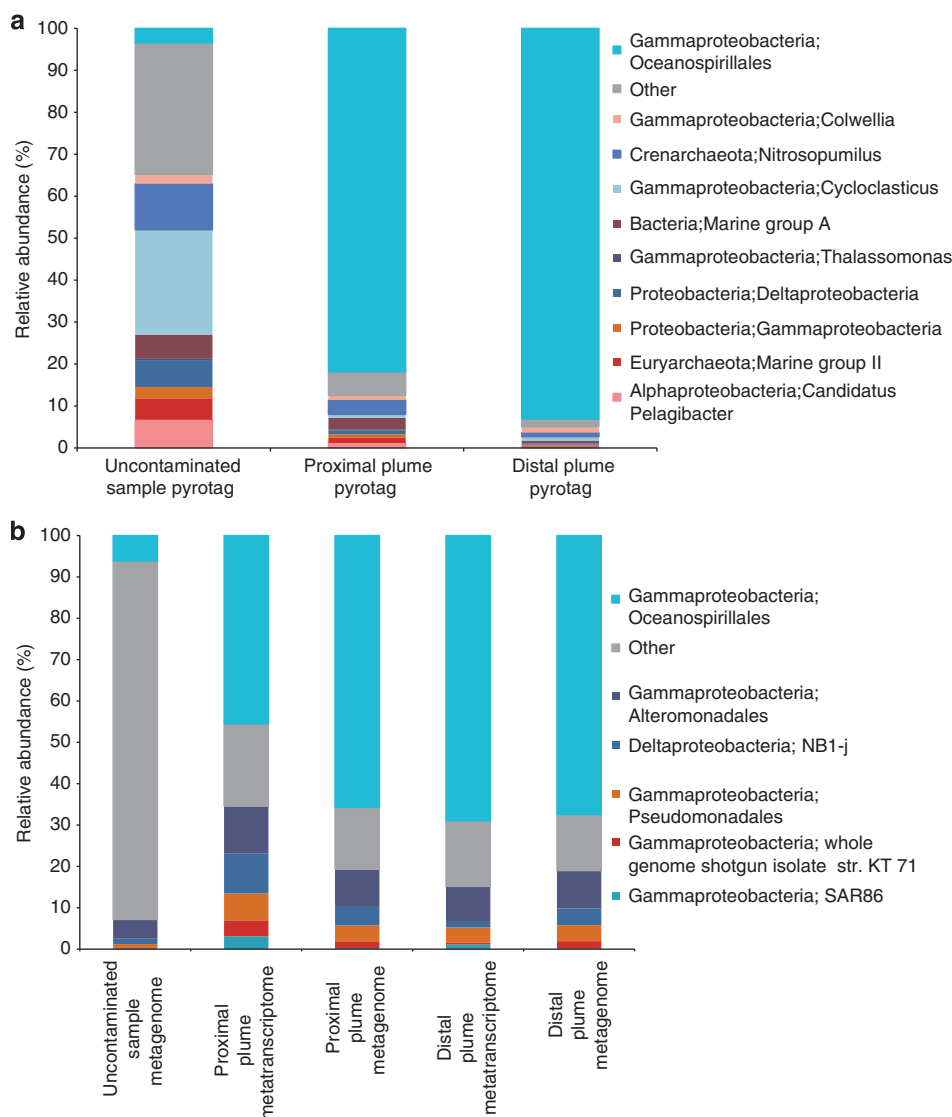
<sup>a</sup>Species richness (Chao, 1984).

<sup>b</sup>Confidence intervals (Chao *et al.*, 1992).

<sup>c</sup>Species richness (Chao *et al.*, 2000).

<sup>d</sup>Species diversity (Simpson, 1949).

<sup>e</sup>Singeltons are species with only one individual. Doubletons are species with only two individuals (Colwell and Coddington, 1994).



**Figure 2** Relative abundance of bacteria and archaea in the proximal and distal plume samples and in the uncontaminated sample collected from plume depth. **(a)** Relative OTU abundance of rarified 16S rRNA gene 454-pyrotag data. Universal primers for archaea and bacteria were used. Taxonomy was assigned using the Greengenes (DeSantis *et al.*, 2006) 16S rRNA gene database. **(b)** Raw, unassembled metagenomic and metatranscriptomic reads were compared with the Greengenes (DeSantis *et al.*, 2006) database. Less-abundant bacteria and archaea are grouped under the category 'other.' The complete list of bacteria and archaea observed in these analyses are presented in Supplementary Tables S2, S3 and S4.

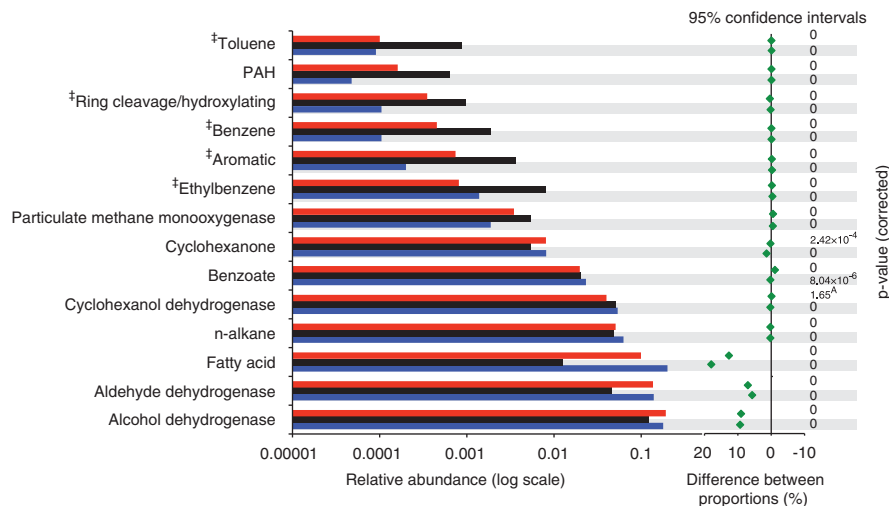


per ml in the distal plume (see Hazen *et al.*, 2010 (Figure 4a)).

Recently, we used a GeoChip (He *et al.*, 2010) functional gene microarray to determine which functional genes were prevalent in the plume and found several hydrocarbon degradation genes having a higher relative abundance in the plume (Lu *et al.*, 2011). However, those data were not sufficient for determination of the biodegradation pathways or whether such pathways were actually expressed or attributed to a particular microorganism in the plume. Here we examined deep metagenome sequence data for genes and the pathways involved in hydrocarbon degradation. We found that the entire pathway for degradation of n-alkanes was represented and abundant in the metagenome data from the plume samples (Figure 3). Alkane oxidation is initiated by monooxygenases, yielding alcohols as intermediates, which are converted to aldehydes and fatty acids by alcohol and aldehyde dehydrogenases (Sabirova *et al.*, 2006). In our study, we observed genes corresponding to alkane monooxygenases, a group of enzymes with broad substrate specificity. In addition, the nearly complete pathway for cyclohexane degradation (alkane monooxygenase → cyclohexanol dehydrogenase → cyclohexanone monooxygenase → → beta oxidation) (Sabirova *et al.*, 2006) was observed and abundant in the metagenomes (Figure 3). We also found a specific alkane gene (alkane-1 monooxygenase), as also reported by Lu *et al.* (2011), that was more abundant in the plume than outside of the plume. However, in contrast to Lu *et al.* (2011), we found that genes involved in degradation of aromatic compounds were less abundant than those involved in alkane degradation (Figure 3; see Supplementary Figure S2 for Macondo crude oil constituents and

Supplementary Table S1 for n-alkane, cyclohexane, methylcyclohexane, BTEX and PAH concentrations in the plume samples). For example, genes coding for ethylbenzene, toluene and PAH degradation were significantly ( $P < 0.05$ ) less abundant in both plume samples compared with the uncontaminated sample. The abundance of genes involved in alkane degradation compared with those involved in degradation of aromatic compounds in our data set is consistent with the ease of degradation of the respective hydrocarbons (Das and Chandran, 2011) and suggested that the plume was enriched with populations having the capacity for degradation of alkanes. Additional evidence for biodegradation of alkanes in the plume samples was presented in our previous study (Hazen *et al.*, 2010) that reported oil half-lives in the plume of 1.2–6.1 days for  $C_{13}$ – $C_{26}$  n-alkanes. It should be noted that biodegradation of hydrocarbons in the plume was carried out without significant oxygen depletion (oxygen saturation averaged 59–67% inside and outside the plume, respectively) (Hazen *et al.*, 2010).

To determine the active microbial community composition and expressed functions in the plume interval, we extracted high quality total RNA from the proximal and distal plume stations and sequenced the samples using the Illumina platform, resulting in a total of 140 million paired-end reads (15 Gb). To assign microbial identities, the unassembled metatranscriptome data (70 million single reads) was compared with a Greengenes (DeSantis *et al.*, 2006) database using blastn. We found that *Oceanospirillales* was not only the most abundant member of the community but also was active with a relative abundance of transcripts of 46% in the proximal plume station sample and 69% in the distal plume station sample (Figure 2 and



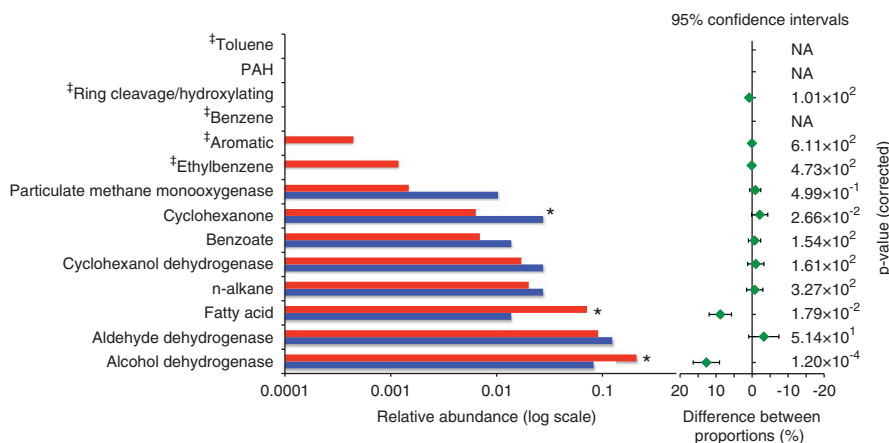
**Figure 3** Analysis of genes involved in hydrocarbon degradation in the metagenome data. Blue bars denote the distal station metagenome, black bars denote the uncontaminated sample metagenome and red bars denote the proximal station metagenome. Raw, unassembled metagenomic reads were compared with proteins involved in hydrocarbon degradation, using a custom database using the tblastn algorithm. A bit score cutoff of  $\geq 40$  was used. Genes were grouped according to function. <sup>A</sup>Indicates that a corrected  $P$ -value was not significant. Gene categories denoted with a '†' indicate a similar substrate degradation pathway in which the different substrates are degraded by the same enzyme (simple ring oxygenases). A complete list of all gene categories is provided in Supplementary Table S6.

Supplementary Table S4). Other members of the community that were active included Alteromonadales (11% relative abundance proximal plume/9% relative abundance distal plume), Deltaproteobacteria (10%/1%), Pseudomonadales (6%/4%) and SAR86 (3%/1%) (Figure 2 and Supplementary Table S4). These community members were also relatively abundant in our metagenome data (Figure 2 and Supplementary Table S3). Therefore, the dominant members of the community that were enriched by the deep-sea plume were also active in the plume.

Previous analysis of samples from the deep-sea plume using DNA-based analyses reported other microbial clades that were more or less abundant at different sampling times. For example, members of the *Colwelliaceae* were detected as dominant community members in the deep-sea plume in samples collected in mid-June 2010 (Valentine *et al.*, 2010). In addition, microcosm experiments with labeled ethane and propane were dominated by *Colwellia*, with some *Oceanospirillales* increasing in abundance (Redmond and Valentine, 2011). Thus, these authors suggested that *Colwellia* was primarily responsible for *in situ* ethane and propane oxidation, with perhaps, *Oceanospirillales* also having a role (Redmond and Valentine, 2011). However, cross-feeding could not be excluded (Redmond and Valentine, 2011). Although the *Colwelliaceae* were not abundant at <1% relative abundance in our samples collected in late May, we found that they were represented in the active microbial community in both of our plume samples (Figure 2 and Supplementary Table S4). However, other members of the community that were previously reported to be abundant (Valentine *et al.*, 2010), such as *Cycloclasticus*, which has members that are able to

degrade simple and PAH aromatics (Dyksterhouse *et al.*, 1995), although present in the pyrotag data at low abundances (Supplementary Table S2), were not represented in our metagenome or metatranscriptome data (Supplementary Tables S3 and S4). In addition, the methylotrophs (*Methylococcales* and *Methylophaga*), although rare, at <1% relative abundance in the plume samples, were active (Supplementary Table S4). Further, the type II methanotrophs *Methylosinus*, *Methylocystis* and *Methylocella* were observed in both plume samples, although at very low levels (<0.01% relative abundance). The metatranscriptome data thus revealed for the first time that *Oceanospirillales* was the dominant active member of the microbial community in the deep-sea plume samples, which we collected in late May, in addition to some other members of the community, including some rare members.

We next determined what functions were expressed in the active microbial community enriched in the plume, with a focus on hydrocarbon degradation genes. A total of 70 million single, unassembled reads resulting from the metatranscriptome sequencing were compared with a hydrocarbon-degradation gene database. Differences in relative abundances of active degradation genes (RNA transcripts) in the plume samples were more pronounced compared with the DNA analyses. The metatranscriptome data largely supported our metagenome data; for example, finding that alkane monooxygenases were highly expressed, with the same pathways for alkane, and specifically for cyclohexane degradation present and abundant (Figure 4). This finding suggests that alkane degradation was the dominant hydrocarbon degradation pathway expressed in the plume at the time interval



**Figure 4** Analysis of genes involved in hydrocarbon degradation in the metatranscriptome data. Blue bars denote the distal station metatranscriptome and red bars denote the proximal station metatranscriptome. Raw, unassembled metatranscriptome reads were compared with proteins involved in hydrocarbon degradation, using a custom database using the tblastn algorithm. A bit score cutoff of  $\geq 40$  was used. Genes were grouped according to function. An asterisk indicates that the difference in relative abundance of a particular gene group in the proximal station metatranscriptome compared with the distal station metatranscriptome was statistically significant. Gene categories denoted with a '†' indicate a similar substrate degradation pathway in which the different substrates are degraded by the same enzyme (simple ring oxygenases). Within this category, ring cleavage/hydroxylating enzymes were observed at very low abundance and only in the proximal plume station. Simple ring oxygenases that are involved in the degradation of benzene, toluene and PAHs were not observed in the metatranscriptome data. A complete list of all gene categories is provided in Supplementary Table S6.

we sampled. Genes coding for degradation of simple and PAH aromatics were either expressed at low levels or not at all (Figure 4). Reddy *et al.* (2012) determined the composition of oil and gas that was emitted from the Macondo well and reported that BTEX compounds were the most abundant hydrocarbons larger than  $C_1$ – $C_5$  in the plume. However, our findings indicate that of the BTEX compounds, only those genes coding for ethylbenzene degradation were expressed, and only in the proximal plume sample (Figure 4). This finding suggests that the more recalcitrant compounds were not being actively degraded at the time when we sampled. Although the samples analyzed by Reddy *et al.* (2012) were collected at later time points than ours (mid to late June), their findings of negligible biodegradation of BTEX compounds over 4 days in the deep-sea plume are consistent with our findings.

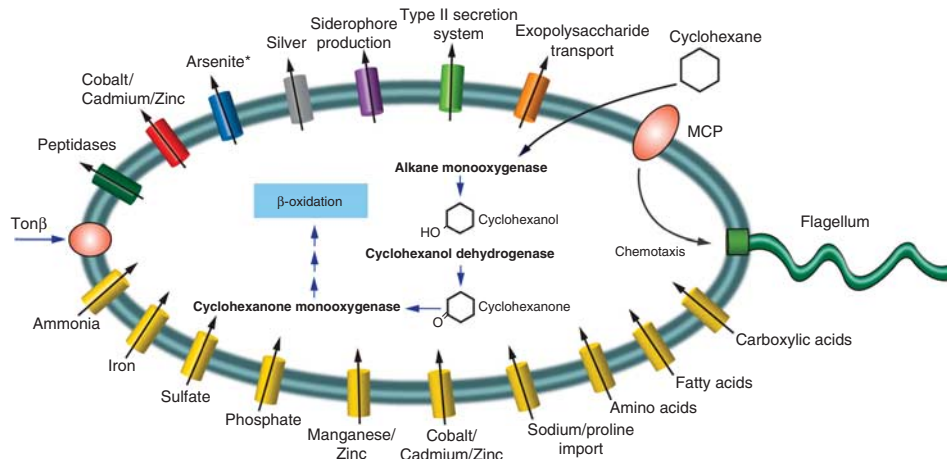
Our study also revealed that a diversity of particulate methane monooxygenase (*Pmo*) genes, but no detectable soluble methane monooxygenases, were expressed in the plume and at higher levels with distance from the wellhead and over time (that is, 1.5–3 days to reach the distal station). Although *pmo* genes were expressed in the oil plume, their relative levels were still less than those for genes coding for alkane degradation (Figure 4). These results were surprising, given that methane was the most abundant hydrocarbon released during the spill (Kessler *et al.*, 2011) with concentrations ranging 20–50-fold higher than background levels (Valentine *et al.*, 2010 and references therein). Our data, as well as those of Valentine *et al.* (2010) and Kessler *et al.* (2011), suggested a lag time in the response of methanotrophs to the plume, relative to the initial bloom of *Oceanospirillales* capable of oxidation of alkanes. However, our findings suggest that methane oxidation was actively occurring in the plume samples presented here, which is earlier in the spill history than has previously been suggested (Valentine *et al.*, 2010; Kessler *et al.*, 2011).

Because of the dominance of members of the *Oceanospirillales* in the plume samples and the recalcitrant nature of members of this order to cultivation, we specifically targeted this group for single-cell genome sequencing. We sorted water collected from the proximal plume station by fluorescence-activated cell sorting. The single cells were lysed and genomic DNA was amplified using MDA. Subsequently, the single cells were screened on the basis of their 16S rRNA gene sequences for those with high sequence quality and that were >95% similar to the dominant *Oceanospirillales* OTU. After sequencing on the Illumina platform, two of these cells yielded high-quality sequences, which were concatenated and assembled, resulting in a single-draft genome. The single cells were most closely related (partial 16S rRNA gene) to an uncultured *Oceanospirillales* (99% similar) from the oil spill (Redmond and Valentine, 2011). Closest cultured representatives were *Oleispira antarctica*

(Yakimov *et al.*, 2003) (97% similar) and *Thalassolituus oleivorans* (97% similar), both of which degrade aliphatic hydrocarbons ( $C_{10}$ – $C_{18}$  and  $C_7$ – $C_{20}$ , respectively) (Yakimov *et al.*, 2003; Yakimov *et al.*, 2004). However, genome sequences are not available for either of these isolates. There are 10 *Oceanospirillales* genome sequences available in IMG (Markowitz *et al.*, 2008), the most well characterized being *Alcanivorax borkumensis* (Schneiker *et al.*, 2006). As a rough estimate, the assembled single-cell *Oceanospirillales* draft genome (1.9 Mb genome with 876 contigs, N50 of 5030 bp and longest contig 25 481 bp) represented more than half a complete genome based on comparisons to the 3.1-Mb genome of *A. borkumensis*. *A. borkumensis* is typically found at low abundance in unpolluted marine environments (Schneiker *et al.*, 2006), but can represent as much as 90% of petroleum-degrading microbial communities (Harayama *et al.*, 1999). The 16S rRNA gene sequences for our single cells were <88% similar to *A. borkumensis*, and thus represent a different genus within the *Oceanospirillales*. Additionally, by comparison of the annotated COGs from the draft genome assembly with those within the Gammaproteobacteria, the draft genome was 53% complete at the phylum level and 52% complete at the sub-phylum level. We also examined all of the raw, unassembled reads for each single-cell genome to ensure that all of the sequence data were analyzed.

Within the draft genome, we used CAMERA (Seshadri *et al.*, 2007) to obtain gene annotations in the assembled contigs. The annotations included putative genes encoding methyl-accepting chemotaxis proteins, flagella, pili and signal transduction mechanisms, all of which were present in the metagenomes and expressed in the plume interval (Figure 5, Supplementary Figures S4 and S5). Physical evidence of microbial cell attraction to oil in the proximal plume sample was also provided by synchrotron radiation-based Fourier-transform infrared spectromicroscopy that revealed sharp absorptions at  $\sim 1640$  and  $\sim 1548\text{ cm}^{-1}$  in the fingerprint region (between  $1800$  and  $900\text{ cm}^{-1}$ ) that are interpreted as Macondo oil droplets surrounded by microorganisms (Supplementary Figure S6). Together, the physical and molecular evidence suggest that bacterial cells were actively attracted to and interacted with oil in the hydrocarbon plume.

Several key functions were recently identified as important for several low-abundance marine surface bacteria to rapidly respond and bloom when conditions become more energy-rich (Yooseph *et al.*, 2010). These included the capacity for chemotaxis and motility, which we found in the draft genome, the metagenomes and metatranscriptome. Clustered regularly interspaced short palindromic repeat regions to protect from phage predation (Yooseph *et al.*, 2010) were also identified in the *Oceanospirillales* draft genome, suggesting a mechanism for avoiding phage predation.



**Figure 5** *Oceanospirillales* single-cell metabolic reconstruction using COG annotations of assembled sequence data and the blast comparison of unassembled single-cell reads to genes involved in hydrocarbon degradation. All genes in the single-cell metabolic reconstruction were present in the metagenomes and most were expressed in the metatranscriptome, except for those with an asterisk following the gene name.

Closer investigation of the draft genome revealed genes for uptake of a suite of nutrients (Figure 5), all of which were also found in the metagenomes and expressed in the plume metatranscriptome. For example, COGs involved in uptake of nitrogen (ammonia permease), phosphate (ABC-type phosphate/phosphonate transport system, permease component), iron (ABC-type  $\text{Fe}^{3+}$  siderophore transport system, permease component, siderophore interacting protein and  $\text{Fe}^{2+}$  transport system proteins), sulfur (sulfate permease and related transporters), Cobalt, Cadmium and Zinc (transporters) were detected in all three data sets (see Supplementary Table S5).

We also analyzed the unassembled *Oceanospirillales* single-cell reads for genes involved in hydrocarbon degradation and searched for genes with closest similarities to previously characterized genes based on bit scores  $\geq 40$ . Consistent with what we observed in the metagenomic and metatranscriptomic data, the *Oceanospirillales* draft genome had genes with closest similarities to those coding for the cyclohexane degradation pathway (Figure 5). This aliphatic degradation pathway is similar to what was proposed for *A. borkumensis* (Schneiker *et al.*, 2006). We did not find evidence in the draft genome for ethane or propane oxidation, which Redmond and Valentine (2011) suggested as a potential metabolic role for the *Oceanospirillales* observed in their SIP experiments.

## Conclusion

In this study, we determined that the dominant and active, yet uncultured, *Oceanospirillales* possessed genes that encode the nearly complete pathway for cyclohexane degradation. This pathway was present in the single cells, the metagenomes and expressed in the plume metatranscriptomes. The capacity of

the *Oceanospirillales* representatives for chemotaxis, motility, and for degradation of alkanes, may have enabled these cells to actively aggregate and increase in numbers in the plume and to scavenge nutrients using a suite of transporters and siderophores. In addition, by using a shotgun metatranscriptome approach, for the first time, we were able to determine which hydrocarbon degradation pathways and other functions were actively expressed in the deep-sea at the time we sampled, to ascribe these pathways to particular groups of microorganisms and to elucidate how these active processes shifted in response to the hydrocarbon plume. Given that the Gulf of Mexico experiences frequent, natural oil spills, elucidating the role of *Oceanospirillales* in oil disposition provides critical data in understanding how members of the deep-sea microbial community can rapidly respond and become enriched in the presence of hydrocarbons.

## Acknowledgements

This work was supported by a subcontract from the University of California at Berkeley, Energy Biosciences Institute to Lawrence Berkeley National Laboratory under its US Department of Energy contract DE-AC02-05CH11231. The SR-FTIR work was conducted at the infrared beamline at the Advanced Light Source, which is supported by the Director, Office of Science, Office of Basic Energy Sciences, of the US Department of Energy. We are extremely grateful to Michael D Curtin for his assistance with Paracel BLAST. We are thankful for the help of Theresa Pollard with handling shipping, ordering and transportation of supplies and people to and from the field. We also thank the captain, crew and science teams aboard the R/V Ocean Veritas and the R/V Brooks McCall. Lastly, we thank Damon Tighe and Janey Lee at Joint Genome Institute for single-cell sorting and amplification and Chien-Chi and Matthew Scholz for metagenome assemblies.

## References

- Allgaier M, Reddy A, Park JI, Ivanova N, D'Haeseleer P, Lowry S *et al.* (2010). Targeted discovery of glycoside hydrolases from a switchgrass-adapted compost community. *PLoS One* **5**: e8812.
- Blow MJ, Zhang T, Woyke T, Speller CF, Krivoshapkin A, Yang DY *et al.* (2008). Identification of ancient remains through genomic sequencing. *Genome Res* **18**: 1347–1353.
- Camilli R, Reddy CM, Yoerger DR, Van Mooy BA, Jakuba MV, Kinsey JC *et al.* (2010). Tracking hydrocarbon plume transport and biodegradation at Deepwater Horizon. *Science* **330**: 201–204.
- Caporaso JG, Kuczynski J, Stombaugh J, Bittinger K, Bushman FD, Costello EK *et al.* (2010a). QIIME allows analysis of high-throughput community sequencing data. *Nat Meth* **7**: 335–336.
- Caporaso JG, Bittinger K, Bushman FD, DeSantis TZ, Andersen GL, Knight R. (2010b). PyNAST: a flexible tool for aligning sequences to a template alignment. *Bioinformatics* **26**: 266–267.
- Chao A. (1984). Non-parametric estimation of the number of classes in a population. *Scan J Stat* **11**: 265–270.
- Chao A, Lee SM, Jeng SL. (1992). Estimating population size for capture-recapture data when capture probabilities vary by time and individual animal. *Biometrics* **48**: 201–216.
- Chao A, Hwang WH, Chen YC, Kuo CY. (2000). Estimating the number of shared species in two communities. *Stat Sinica* **10**: 227–246.
- Colwell RK, Coddington JA. (1994). Estimating terrestrial biodiversity through extrapolation. *Philos T Roy Soc B* **345**: 101–118.
- Das N, Chandran P. (2011). Microbial degradation of petroleum hydrocarbon contaminants: an overview. *Biotechnol Res Int* **2011**: 1–13.
- DeAngelis KM, Silver WL, Thompson AW, Firestone MK. (2010). Microbial communities acclimate to recurring changes in soil redox potential status. *Environ Microbiol* **12**: 3137–3149.
- DeSantis TZ, Hugenholtz P, Larsen N, Rojas M, Brodie EL, Keller K *et al.* (2006). Greengenes, a Chimera-Checked 16S rRNA gene database and workbench compatible with ARB. *Appl Environ Microbiol* **72**: 5069–5072.
- Dyksterhouse S, Gray J, Herwig R, Lara J, Staley J. (1995). *Cycloclasticus pugetii* gen. nov., sp. nov., an aromatic hydrocarbon-degrading bacterium from marine sediments. *Int J Syst Bacteriol* **45**: 116–123.
- Federal Interagency Solutions Group. (2010). Oil Budget Calculator Science and Engineering Team. Oil Budget Calculator Technical Documentation.
- Edgar RC. (2010). Search and clustering orders of magnitude faster than BLAST. *Bioinformatics* **26**: 2460–2461.
- Grissa I, Vergnaud G, Pourcel C. (2007). CRISPRFinder: a web tool to identify clustered regularly interspaced short palindromic repeats. *Nucleic Acids Res* **35**: W52–W57.
- Harayama S, Kishira H, Kasai Y, Shutsubo K. (1999). Petroleum biodegradation in marine environments. *J Mol Microbiol Biotechnol* **1**: 63–70.
- Hazen TC, Dubinsky EA, DeSantis TZ, Andersen GL, Piceno YM, Singh N *et al.* (2010). Deep-sea oil plume enriches indigenous oil-degrading bacteria. *Science* **330**: 204–208.
- He Z, Deng Y, Van Nostrand JD, Tu Q, Xu M, Hemme CL *et al.* (2010). GeoChip 3.0 as a high-throughput tool for analyzing microbial community composition, structure and functional activity. *ISME J* **4**: 1167–1179.
- Kessler JD, Valentine DL, Redmond MC, Du M, Chan EW, Mendes SD *et al.* (2011). A persistent oxygen anomaly reveals the fate of spilled methane in the deep gulf of Mexico. *Science* **331**: 312–315.
- Kunin V, Engelbrekton A, Ochman H, Hugenholtz P. (2010). Wrinkles in the rare biosphere: pyrosequencing errors can lead to artificial inflation of diversity estimates. *Environ Microbiol* **12**: 118–123.
- Lane DJ. (1991). 16S/23S rRNA sequencing. In: Stackenbrandt E, Goodfellow M (eds) *Nucleic acid techniques in bacterial systematics*. John Wiley: New York, pp 115–148.
- Letunic I, Yamada T, Kanehisa M, Bork P. (2008). iPath: interactive exploration of biochemical pathways and networks. *Trends Biochem Sci* **33**: 101–103.
- Lu Z, Deng Y, Van Nostrand JD, He Z, Voordeckers J, Zhou A *et al.* (2011). Microbial gene functions enriched in the Deepwater Horizon deep-sea oil plume. *ISME J* **6**: 451–460.
- Markowitz VM, Ivanova NN, Szeto E, Palaniappan K, Chu K, Dalevi D *et al.* (2008). IMG/M: a data management and analysis system for metagenomes. *Nucleic Acids Res* **36**: D534–D538.
- Miller DN, Bryant JE, Madsen EL, Ghiorse WC. (1999). Evaluation and optimization of DNA extraction and purification procedures for soil and sediment samples. *Appl Environ Microbiol* **65**: 4715–4724.
- Miller JR, Koren S, Sutton G. (2010). Assembly algorithms for next-generation sequencing data. *Genomics* **95**: 315–327.
- Parks DH, Beiko RG. (2010). Identifying biologically relevant differences between metagenomic communities. *Bioinformatics* **26**: 715–721.
- Reddy CM, Arey JS, Seewald JS, Sylva SP, Lemkau KL, Nelson RK *et al.* (2012). Composition and fate of gas and oil released to the water column during the Deepwater Horizon oil spill. *Proc Natl Acad Sci USA*; e-pub ahead of print 3 February 2012; doi:10.1073/pnas.1101242108.
- Redmond MC, Valentine DL. (2011). Natural gas and temperature structured a microbial community response to the Deepwater Horizon oil spill. *Proc Natl Acad Sci USA*; e-pub ahead of print 3 October 2011; doi:10.1073/pnas.1108756108.
- Rodrigue S, Malmstrom RR, Berlin AM, Birren BW, Henn MR, Chisholm SW. (2009). Whole genome amplification and de novo assembly of single bacterial cells. *PLoS One* **4**: e6864.
- Sabirova JS, Ferrer M, Regenhardt D, Timmis KN, Golyshin PN. (2006). Proteomic insights into metabolic adaptations in *Alcanivorax borkumensis* induced by alkane utilization. *J Bacteriol* **188**: 3763–3773.
- Schneiker S, dos Santos VAPM, Bartels D, Bekel T, Brecht M, Buhrmester J *et al.* (2006). Genome sequence of the ubiquitous hydrocarbon-degrading marine bacterium *Alcanivorax borkumensis*. *Nat Biotech* **24**: 997–1004.
- Seshadri R, Kravitz SA, Smarr L, Gilna P, Frazier M. (2007). CAMERA: A Community Resource for Metagenomics. *PLoS Biol* **5**: e75.
- Simpson EH. (1949). Measurement of Diversity. *Nature* **163**: 688–688.
- Valentine DL, Kessler JD, Redmond MC, Mendes SD, Heintz MB, Farwell C *et al.* (2010). Propane respiration jump-starts microbial response to a deep oil spill. *Science* **330**: 208–211.

- Yakimov MM, Giuliano L, Gentile G, Crisafi E, Chernikova TN, Abraham W-R et al. (2003). *Oleispira antarctica* gen. nov., sp. nov., a novel hydrocarbonoclastic marine Bacterium isolated from Antarctic coastal sea water. *Int J Syst Evol Microbiol* 53: 779–785.
- Yakimov MM, Giuliano L, Denaro R, Crisafi E, Chernikova TN, Abraham WR et al. (2004). *Thalassolituus oleivorans* gen. nov., sp. nov., a novel marine bacterium that obligately utilizes hydrocarbons. *Int J Syst Evol Microbiol* 54: 141–148.
- Yooseph S, Nealson KH, Rusch DB, McCrow JP, Dupont CL, Kim M et al. (2010). Genomic and functional adaptation in surface ocean planktonic prokaryotes. *Nature* 468: 60–66.
- Zerbino D, Birney E. (2008). Velvet: algorithms for de novo short read assembly using De Bruijn graphs. *Genome Res* 18: 821–829.

## DISCLAIMER

This document was prepared as an account of work sponsored by the United States Government. While this document is believed to contain correct information, neither the United States Government nor any agency thereof, nor The Regents of the University of California, nor any of their employees, makes any warranty, express or implied, or assumes any legal responsibility for the accuracy, completeness, or usefulness of any information, apparatus, product, or process disclosed, or represents that its use would not infringe privately owned rights. Reference herein to any specific commercial product, process, or service by its trade name, trademark, manufacturer, or otherwise, does not necessarily constitute or imply its endorsement, recommendation, or favoring by the United States Government or any agency thereof, or The Regents of the University of California. The views and opinions of authors expressed herein do not necessarily state or reflect those of the United States Government or any agency thereof or The Regents of the University of California.

Ernest Orlando Lawrence Berkeley National Laboratory is an equal opportunity employer.