

METAL DEPOSITION PATTERN IN KUMAON HILLS (INDIA) THROUGH ACTIVE MONITORING USING MOSS *Racomitrium crispulum*

*¹D. K. Saxena, ²S. Arfeen

¹Bryology laboratory, Botany Department, Bareilly College, Bareilly, India

²Ministry of Science & Technology, Department of Biotechnology, Govt. of India, India

Received 10 May 2009; revised 31 January 2010; accepted 5 February 2010

ABSTRACT

Biomonitoring is a method of observing the impact of external factors on ecosystems and their development over a long period. In this research the level of Zn, Cu, Cd and Pb has been determined in samples of the moss *Racomitrium crispulum* from the area of Almora, Nainital and Pithoragarh of Kumaon hills. High metallic load was observed in locations near proximity of higher traffic density area, which integrated due to enhanced tourism during summer, followed by winter and monsoon season; while in rural area high value of Zn, Cu and Cd attributes to their use in fertilizers. Positive significant correlations obtained between Pb-Zn and Zn-Cu suggest a common origin of these metals. Elemental concentration in *Racomitrium.crispulum* was in the order of Zn> Pb ~ Cu> Cd in summer, Zn> Cu > Pb > Cd in winter season and Zn> Cu > Pb > Cd in monsoon which reflect atmospheric trace elemental load. Bioaccumulation ability of this moss was evaluated statistically using DMR test and cartographically presented on contour maps obtained from SURFER program.

Key words: Elemental concentration, Kumaon hills, Moss *Racomitrium crispulum*, Active monitoring

INTRODUCTION

Even in the advance civilizations of the ancient world, the use of metals reached an order of magnitude that can be detected as metal deposition on global scale including Greenland (Markert *et al.*, 1999) Himalayan belt of India (Saxena and Arfeen, 2010; Saxena *et al.*, 2010). A comparative study shows that metallic pollutants are more hazardous than any other way of pollution (Soleimani and Rafinejad, 2008). The metals As, Cr, Be, F, V, Cu, Se, Cd, Zn, Hg and Pb are closely associated with air precipitation and are derived from a wide spectrum of natural and anthropogenic sources (Shahmansouri *et al.*, 2005). Therefore, monitoring of air contaminants is necessary to determine impact upon ecosystem and control measure requires for abatement of their sources in their respective region (Saxena

et al., 2008a). In recent decades the number and intensity of anthropogenic sources, such as waste burning, fertilizers, vehicle emissions, agricultural and sewage sludge, have increased the overall environmental element concentration (Bargagli, 1998; Saxena *et al.*, 2008b). This fact seems to be true for the Kumaon hills (India) where there are large numbers of vehicles and other human actives increased with time.

A great attention should be paid to scope light on the real effects of the metal pollutants induced with the hill region on forage quality of range vegetation lies near to the tourist cities. High concentration of heavy metals in the ecosystems may lead to an excessive accumulation, which may be toxic to plants and cause possible health problem to animals and human.

The major anthropogenic pollutant released is Cd and Cu from phosphate fertilizers (Singh *et al.*, 1999; Amundsen *et al.*, 2000). Phosphate

*Corresponding author: dinesh.botany@gmail.com
Tel: +91-581-2301860; Fax: +91-581-2574725

fertilizers contain 5-100 mg Cd/Kg and excessive use of this metal will decrease the natural fertility rate of soil. Zn is chemically similar to Cd; it is also readily taken up by plants and enters edible portions which are major concern for edibility of such food grains and vegetables. Although Pb is not easily accumulated by plants, but their presence in excessive in environment like organo-lead compounds e.g., alkyl lead (from automobiles) are highly toxic, even when they occur at very low concentrations (Fergusson, 1990).

Bryophytes have been used in present study as terrestrial biomonitors and bioindicators of air pollution are recognized as more sensitive to pollution than other plants (Sardans and Peñuelas, 2005; Sun *et al.*, 2009; Saxena and Arfeen, 2009). The specific biology of mosses make them capable to receive and accumulate chemical substances predominantly from surrounding atmosphere without any selectivity parameter (Yurukova and Gecheva, 2003; Fernandez *et al.*, 2004). They do not have conductive strand and root system, means directly uptaking air pollutants and represented by each cells individually (Glime and Saxena, 1991). Due to their accumulation potential they have been preferred in present study. Moss *Racomitrium crispulum* (*R. crispulum*) is a metal tolerant species which was earlier validated by *in vitro* metal treatment analysis under high metal doses (Saxena and Arfeen, 2009).

In present work, moss *R. crispulum* has been used for active monitoring (moss bags) to determine total level of atmospheric deposition of heavy metals in Kumaon hills in different seasons. This technique is very useful especially in such polluted areas where wild growing mosses are lacking (Makholm and Miadenoff, 2005).

MATERIALS AND METHODS

Study area

The Kumaon region is spread over 21,073 km² and has extensive track of natural forests until a few centuries back. The species is of wide range of distribution in Western Himalaya geographically ranging from 29° 5' -31° 25' N in latitude to 79° 43' -81° E in longitude (IG, 1931). The Kumaon hill is extensively divided into three major zones for the biomapping study namely-

Almora (longitudes 79° 26'E- 80° 15'E; latitudes 29° 15' N- 30° 29' N), Nainital (longitudes 79° 51'E- 80° 18'E; latitudes 28° 45' N- 29° 38' N) and Pithoragarh (longitudes 79° 45'E- 81° 21'E; latitudes 29° 32' N- 30° 47' N). The climate was quite cold between October–April and mild warm through May–June followed by monsoon rain till September. The average rainfall measured 80” and relative humidity range from 85% to 90% in the months of July and August. The maximum and minimum temperatures were recorded as 27°C to 10°C in summer and 15°C to 3°C in winter season, respectively.

Sampling

Moss *R. crispulum* was collected from the forest cover of Mukteshwar (control site), situated at an altitude of 2300 meters. A complete green patch of moss was transplanted in nylon bags at 19 study sites of investigated areas and sufficient amount of the same moss was taken for digestion to determine the baseline concentration of metals in each season. Each moss bag was suspended 20 cm² above the ground in triplicate. These moss bags were transplanted cross section wise in all the four directions and were harvested after an exposure period of four months i.e. first week of November (for monsoon monitoring), March (for winter monitoring) and July (for summer monitoring).

Metal analysis

Upon return to the laboratory, harvested moss samples were oven dried at 40°C for 24 hours. Prior to analysis, adhering substrate and litter was removed by hand, great care being taken to avoid metal contamination. Triplicate samples were digested with concentrated HNO₃ and HClO₄ in ratio of 4:1 v/v on a hot plate. The digestion was completed after all organic material had disappeared. The extract obtained was filtered and the filtrate was made up to a final volume of 50 mL by double distilled water and fraction was quantitatively analyzed by atomic absorption spectrophotometer (Model no. 4039). The suitable blank was used to check for possible contamination during extraction.

Data analysis

Samples were collected in triplicate to conduct the statistical analysis. Values represented as mean \pm standard error (Snedecor and Cochran, 1967). The significance in metal concentration at different distances and seasons were calculated utilizing Dunkun's Multiple Range test (Karmer, 1956). Cartographic representation of the results was performed with the program package Surfer (Golden Software Inc., USA). Pollution index (PI) of the study area is calculated on the basis of each metal, total number of metals, total amounts of metals and number of samples collected from predefined area of the district (Grodzinska *et al.*, 1993). The formula of PI value is:

$$S_j = \sum_{i=1}^{i=j} \frac{X_{ij} - \bar{X}_i}{\bar{X}_i} \quad (1)$$

Where, X_{ij} is the content of i^{th} metal at the j^{th} location; \bar{X}_i is the mean content of the i^{th} metal at all locations. The percent metal load was calculated by using following formula:

$$\%Metal\ Load = \left(\frac{\text{Total Different Metals at One spot} - \sum M_1 + M_2 + \dots + M_i}{\sum M_1 + M_2 + \dots + M_i} \right) / N \quad (2)$$

Where, M_1, M_2, \dots, M_i are total of metal M at all sites, and N is number of spots examined in current study.

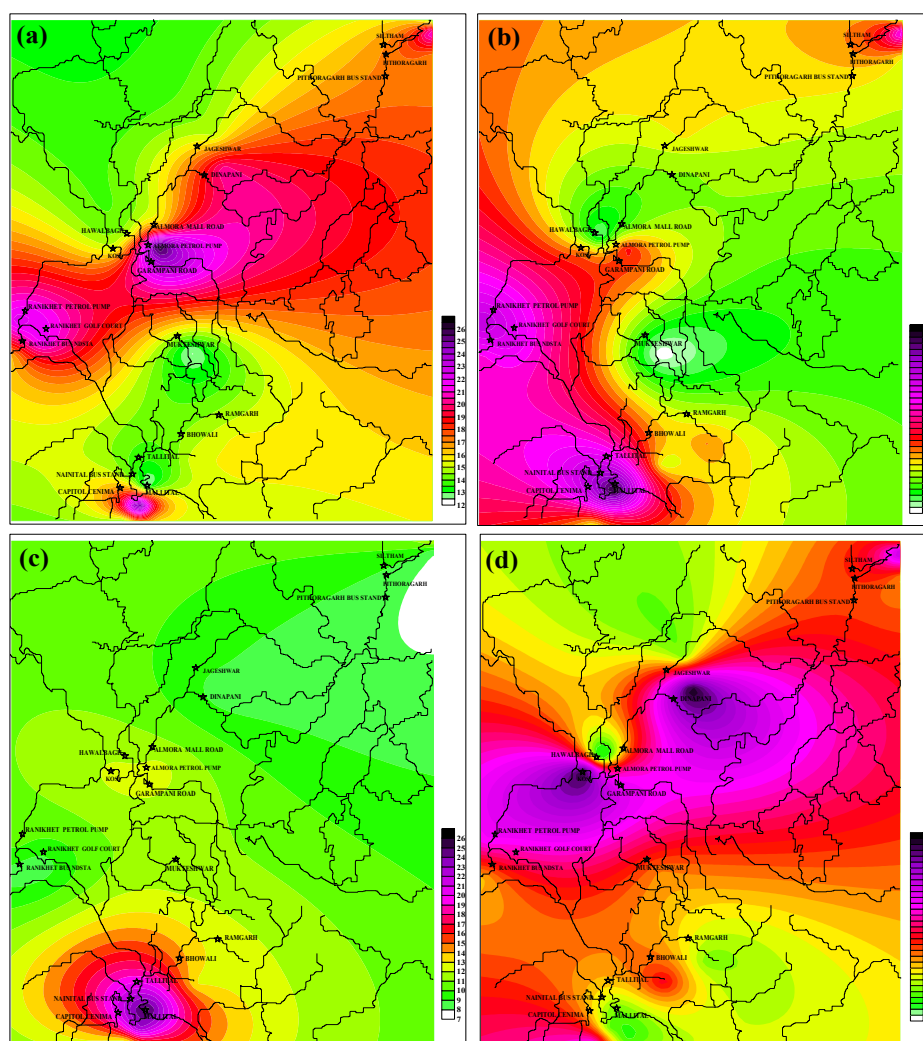


Fig. 1: Distribution map of metal content in *R. crispulum* ($\mu\text{g}/\text{dry weight}$) during winter: (a) Pb, (b) Zn, (c) Cu and (d) Cd

RESULTS

The seasonally exposed moss samples were used to calculate metal load at different regions Table 1 shows results of metal concentrations in different seasons. The distribution maps of metal concentrations in the area are presented in Figs 1-3. The mean value of each metals and their significance (ANOVA at $p \leq 0.05$ and $p \leq 0.01$) were calculated along with their corresponding mean value at control site i.e. Mukteswar.

Pb concentration in moss *R. crispulum* in experimental area ranged both seasonally and regionally (Table 1). Amongst 19 catchments sites, Nainital (bus stand) exhibited maximum

value of Pb (26.32, 42.11 and 20.00 $\mu\text{g/g}$), while the lowest was measured in moss *R. crispulum* harvested from Mukteswar forest (12.34, 14.93 and 8.39 $\mu\text{g/g}$) during winter, summer and monsoon seasons respectively (Table 1). The overall percent (%) metal Pb load depicted that Nainital bus stand, Almora petrol pump and Ranikhet golf court had maximum 8 % metal Pb (Fig. 4). The Tallital and bus stand area of Nainital showed maximum value of Pb deposition in xeric moss *R. crispulum* (Table 1). During monsoon season around 60% decrease in Pb concentration was noticed at Almora (Mall road) in monsoon season (Fig. 4).

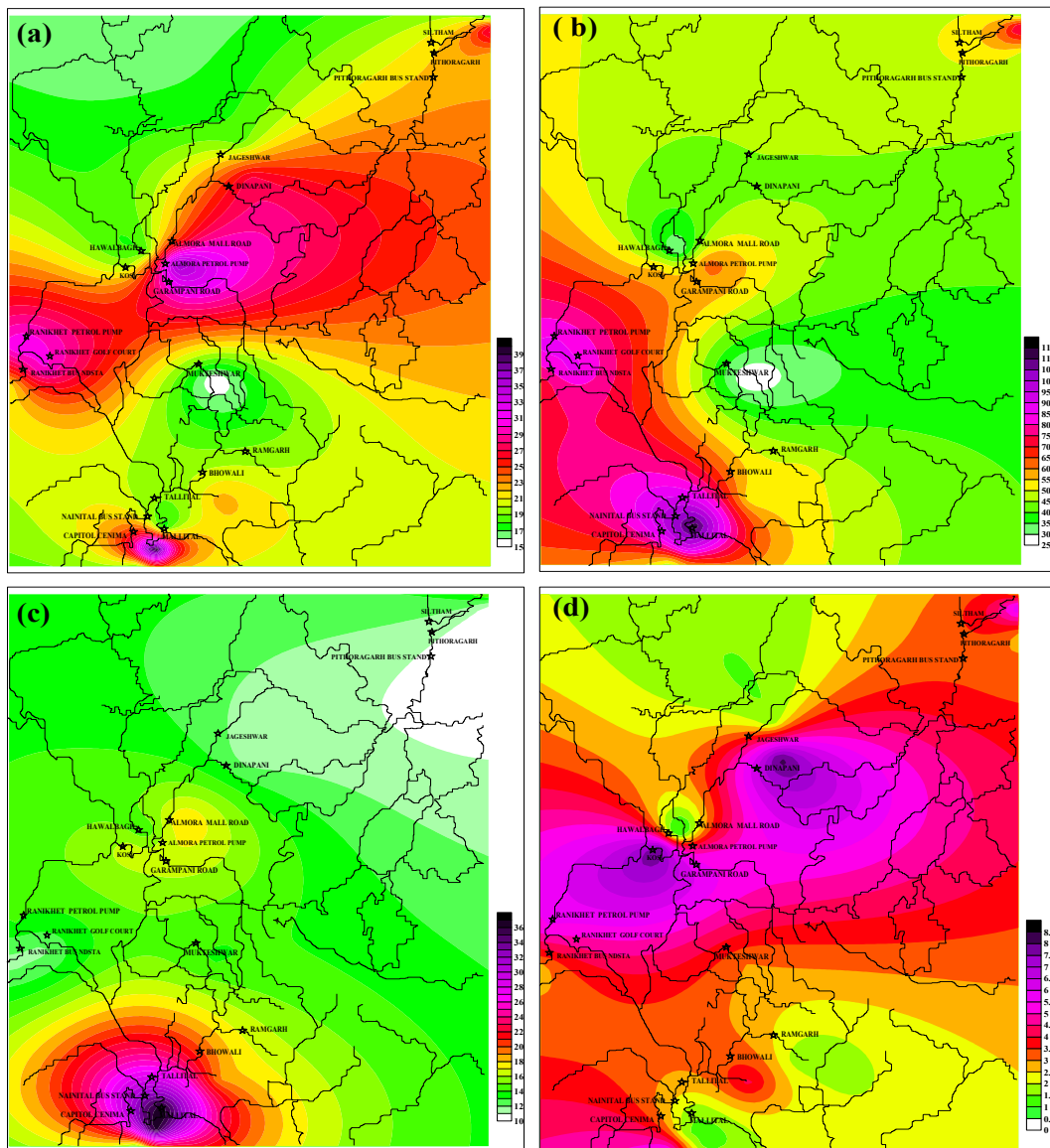


Fig. 2: Distribution map of metal content in *R. crispulum* ($\mu\text{g/g}$ dry weight) during summer: (a) Pb, (b) Zn, (c) Cu and (d) Cd

Farming sites i.e. Dinapani, Kosi and Ranikhet (golf court) showed a significant 34 % increase in Zn during summer season in reference to winter (Fig. 4). The monsoon season exhibited completely different pictures of precipitation for metal Zn in moss *R. crispulum*. The sites of

Almora (Mall road), Nainital (Bus stand) had around 35-40 % decrease in Zn concentration with respect to summer in *R. crispulum* (Fig. 4). Significantly, control site (Mukteswar forest) showed 28 % decrease in Zn during rainy season with reference to summer (Fig. 4).

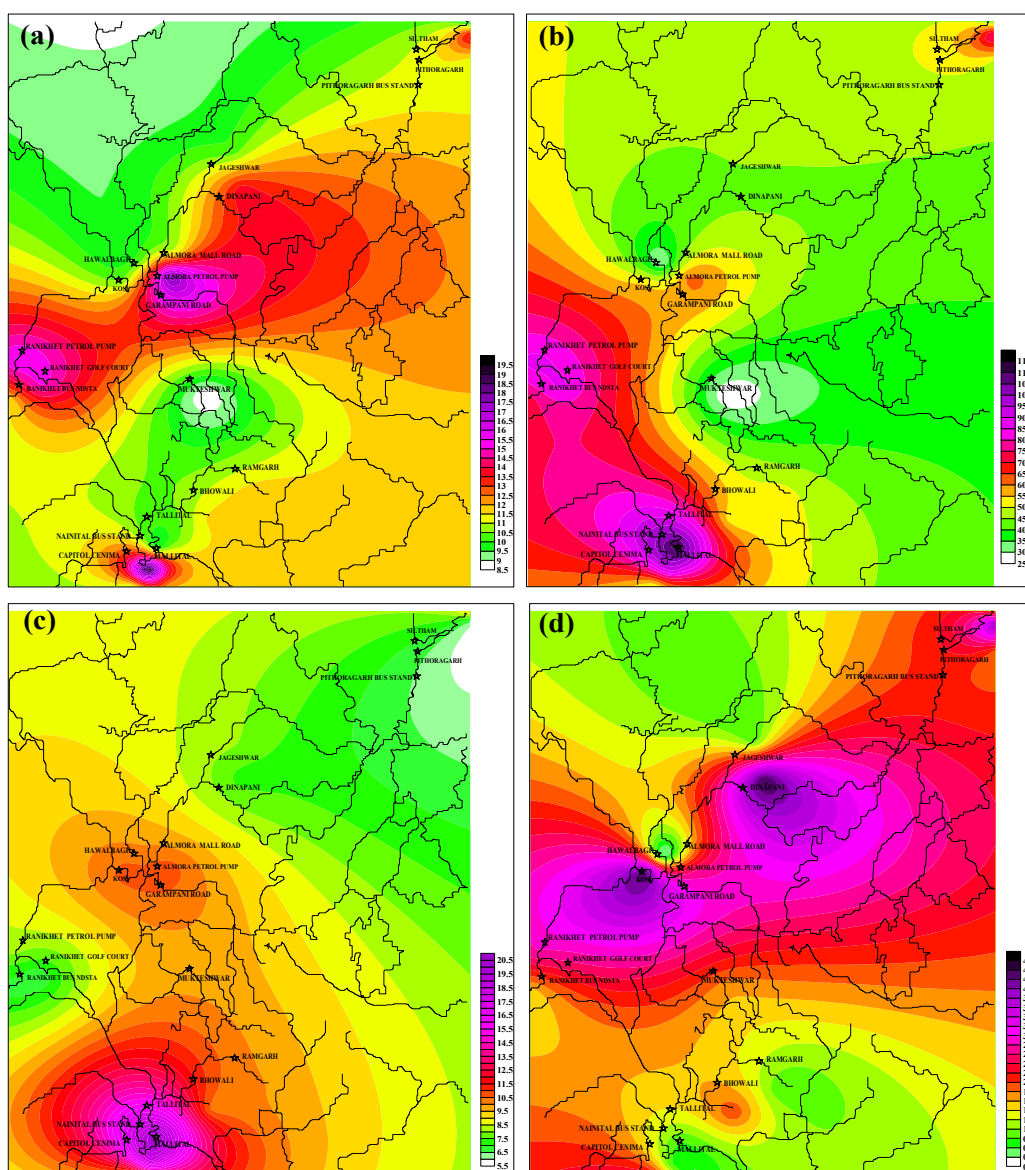


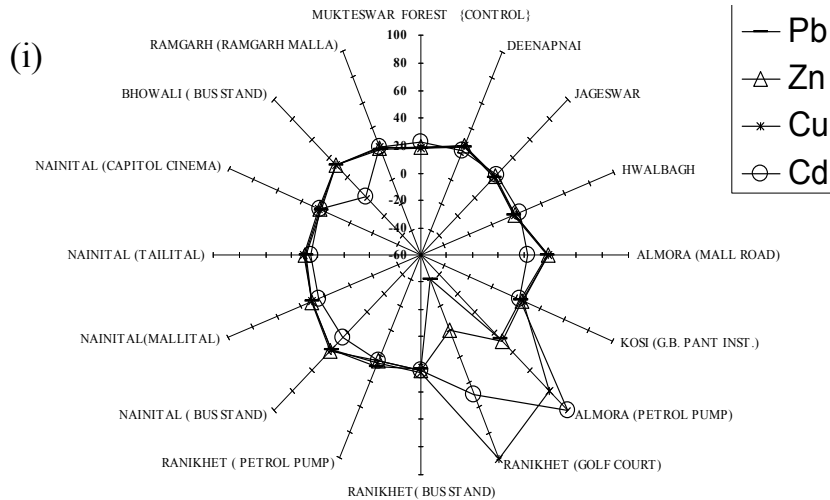
Fig. 3: Distribution map of metal content in *R. crispulum* ($\mu\text{g/g}$ dry weight) during monsoon: (a) Pb, (b) Zn, (c) Cu and (d) Cd

The comparative study on the seasonal basis revealed that summer is the season for high Cu load in moss. Almora is the hot spot for Cu and depicted maximum value during all the three seasons (Table 1). A 25-50 % decrease in Cu

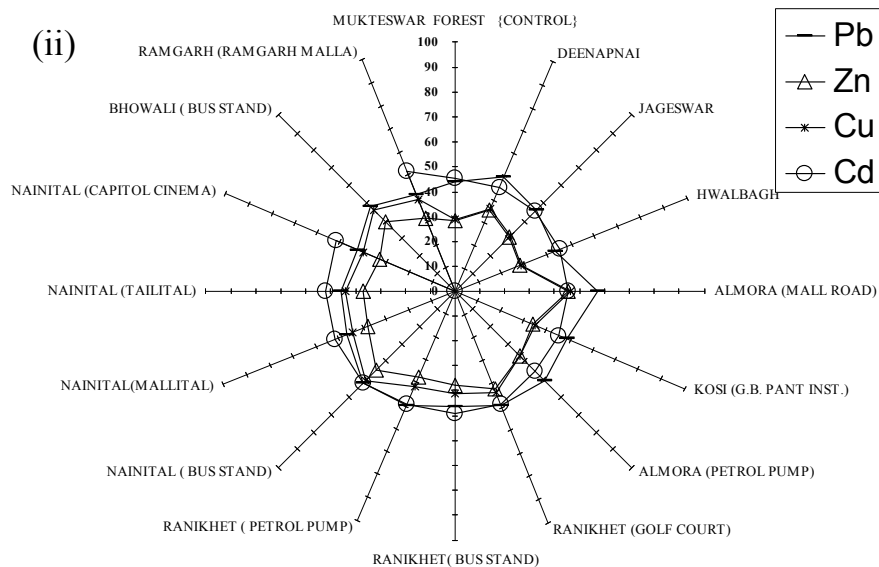
content in moss *R. crispulum* was observed in the catchment areas of Nainital during winter with respect to summer. Present finding deployed that Ranikhet golf court and Almora (petrol pump) exhibited 94 % and 81 % decrease in metal Cu

during winter season with reference to summer (Fig. 4). The catchments area of Almora (mall road) exhibited 45 % decrease of Cu in rainy season in reference to summer (Fig. 4). On the basis of indirect method of metal distribution study, samples containing somewhat higher amount of Cd were localized at Jageshwar

or from the agricultural areas (Kosi). During winter a high value of Cd was observed at Ranikhet (petrol pump). In winter season around 83.85 % increase in Cd at Ranikhet golf court with respect to summer was a striking outcome (Fig. 4).



Percent decrease in metal in winter with reference to summer season during year 2004 in *Racomitrium crispulum* (Hook. et. Wils.)



Percent decrease in metal in rain with reference to summer season during year 2004 in *Racomitrium crispulum* (Hook. et. Wils.)

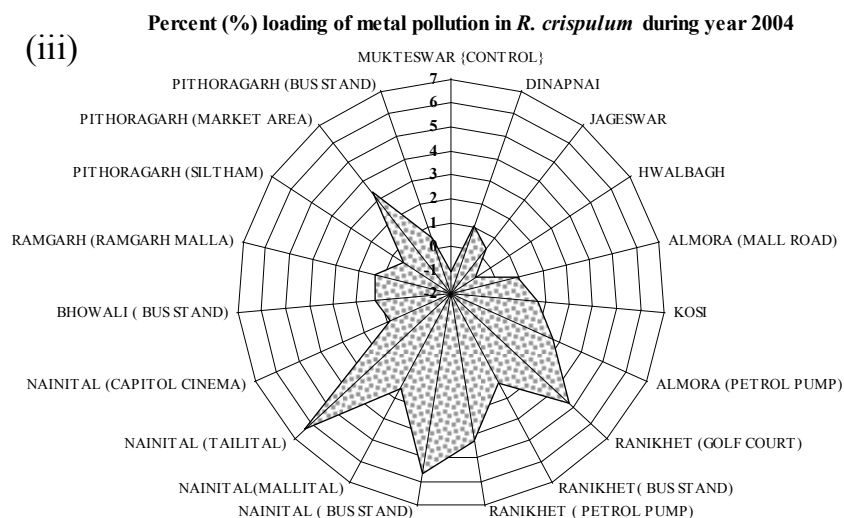


Fig. 4: Percent decrease in metal in (i) winter and (ii) monsoon with reference to summer season (iii) percent metal load (%) by using moss *R. crispulum* as a biomonitoring species exposed in Kumaon hills

Percent metal load and pollution index value

Nainital (Tallital) had maximum percent metal loading i.e. 6.33 % during the year (Fig. 4). In present study Mukteswar forest was considered as control site. The least value of percent metal load at Mukteswar, deploy that our consideration of taking (i.e. -1.093) Mukteswar as control site was significant (Fig. 4). The pollution index (PI) value at Nainital bus stand, Almora mall road, Kosi, Almora petrol pump, Ranikhet petrol pump and Pithoragarh market area were +1.102393, +1.012493, +1.075294, +1.109318, + 1.013296 and +1.000281, respectively during year 2004 (Table 3). At Mukteshwar the PI value was recorded as -1.73241.

DISCUSSION

Interseasonal variability in metal value depicts that active monitoring is the best ever technique for representing the deposition value around the surrounding of indicator organism (Sun *et al.*, 2009).

Metal lead

The consumption of petrol (Thöni *et al.*, 1996; Halleraker *et al.*, 1998) could be the reason for its high value in all seasons near proximity to the town, along the roads or near Nainital bus stand which intensified during summer, a

tourist season (Fig. 1a, 2a and 3a). The result is justifying the statement that at tourist places there will always be increasing trend observed for vehicle pollution; consequently increase in the metals, associated with the vehicular pollution (De Caritat *et al.*, 2001; Fernandez *et al.*, 2002; Poikolainen *et al.*, 2004). Present experimental data further revealed that many fold increase in its value during summer could be due to enhanced traffic in summer seasons (Table 1). The overall maximum percent (%) metal Pb load in location of Nainital bus stand, Almora petrol pump and Ranikhet golf court is in line with their maximum value (Fig. 4).

In addition, the concept of holiday making that was earlier limited to the average Indian, has become more of a reality and these hill stations find themselves choked with tourist traffic in summer and indeed they are more crowded in each season except monsoon (Saxena and Saxena, 2000). A decrease in metal lead load during monsoon at Mall road of Almora could be due to the atmospheric metal load is washed during heavy rains (Fernández *et al.*, 2009) (Fig. 3a).

Combustion of leaded, low-leaded and unleaded gasoline continues to be the major source of atmospheric Pb emissions (Pacyna and Pacyna, 2002).

Table 1: Metals concentrations ($\mu\text{g/g}$ dry weight.) \pm SE in seasonally exposed moss samples of *R. crispulum* at Kumaon hills. Significance differ from control (Mukteswar forest)
(a) $p \leq 0.05$ and (b) $p \leq 0.01$ significance level

Catchment sites	WINTER			
	Pb	Zn	Cu	Cd
Mukteswar forest	12.34 \pm 0.92	20.35 \pm 1.05	11.34 \pm 0.91	2.36 \pm 0.25
Deenapnai	20.34 ^a \pm 1.04	32.06 ^a \pm 2.22	8.37 \pm 0.86	6.5 ^a \pm 0.64
Jageswar	14.95 ^b \pm 0.94	36.29 \pm 2.65	9.34 ^b \pm 0.94	1.23 ^b \pm 0.15
Hwalbagh	15.37 \pm 0.95	23.34 \pm 1.34	11.67 ^b \pm 0.91	0.12 \pm 0.05
Almora (Mall road)	16.24 ^a \pm 0.96	30.67 ^a \pm 2.02	11.24 \pm 0.91	2.77 \pm 0.22
Kosi (G.B. Pant institute)	15.33 \pm 0.95	40.37 ^a \pm 3.05	12.31 ^b \pm 0.92	6.28 ^a \pm 0.61
Almora (Petrol pump)	26.57 ^a \pm 1.16	45.26 ^a \pm 3.50	12.38 ^b \pm 0.92	3.61 \pm 0.35
Ranikhet (Golf court)	21.64 ^a \pm 1.11	60.94 ^a \pm 5.02	8.34 \pm 0.81	3.23 \pm 0.32
Ranikhet (Bus stand)	16.34 ^a \pm 0.96	54.36 ^a \pm 4.44	8.67 \pm 0.82	2.12 ^b \pm 0.24
Ranikhet (Petrol pump)	22.34 ^a \pm 1.94	66.32 ^a \pm 5.52	10.38 ^b \pm 0.90	4.14 \pm 0.45
Nainital (Bus stand)	26.32 ^a \pm 1.62	56.34 ^a \pm 4.62	22.87 ^a \pm 1.21	1.24 ^b \pm 0.14
Nainital (Mallital)	16.38 ^a \pm 0.96	45.67 ^a \pm 3.54	16.39 ^a \pm 0.96	0.96 \pm 0.02
Nainital (Tallital)	12.37 ^b \pm 0.92	80.34 ^a \pm 7.01	25.64 ^a \pm 1.52	1.23 ^b \pm 0.14
Nainital (Capitol cinema)	14.22 ^b \pm 0.92	34.95 ^a \pm 2.44	10.99 ^b \pm 0.90	4.22 \pm 0.42
Bhowali (Bus stand)	15.38 \pm 0.95	34.12 ^a \pm 2.41	12.87 \pm 0.92	3.18 \pm 0.34
Ramgarh malla	15.64 \pm 0.95	40.29 ^a \pm 3.05	12.64 \pm 0.92	1.25 ^b \pm 0.12
Pithoragarh (Siltham)	14.27 ^b \pm 0.94	34.6 ^a \pm 2.41	12.37 \pm 0.92	2.56 \pm 2.15
Pithoragarh (Market area)	21.6 ^a \pm 1.22	60.25 ^a \pm 5.04	7.98 \pm 0.74	5.17 ^a \pm 0.51
Pithoragarh (Bus stand)	16.97 \pm 1.61	20.35 ^b \pm 1.05	7.64 \pm 0.72	2.36 \pm 0.23

Catchment sites	SUMMER			
	Pb	Zn	Cu	Cd
Mukteswar forest	14.93 \pm 0.94	25.03 \pm 1.55	13.83 \pm 0.91	3.02 \pm 0.34
Deenapnai	27.45 ^a \pm 1.76	43.60 ^a \pm 3.62	11.38 ^b \pm 0.91	8.32 ^a \pm 0.87
Jageswar	18.68 \pm 0.98	46.08 ^a \pm 3.62	11.76 ^b \pm 0.91	1.57 \pm 0.15
Hwalbagh	18.44 \pm 0.98	28.47 \pm 1.81	14.12 ^b \pm 0.94	0.15 \pm 0.05
Almora (Mall road)	25.82 \pm 1.51	49.37 ^a \pm 3.94	18.20 ^a \pm 0.92	3.54 ^b \pm 0.34
Kosi (G.B. Pant institute)	20.23 ^a \pm 1.02	53.69 ^a \pm 4.35	16.44 \pm 0.96	8.03 ^a \pm 0.85
Almora (Petrol pump)	36.49 ^a \pm 2.62	62.91 ^a \pm 5.25	17.04 \pm 0.91	4.62 ^b \pm 0.45
Ranikhet (Golf court)	30.07 ^a \pm 2.01	86.53 ^a \pm 7.64	11.74 ^b \pm 0.91	4.26 ^b \pm 0.44
Ranikhet (Bus stand)	21.24 \pm 1.91	71.75 ^a \pm 6.12	11.68 ^b \pm 0.91	2.79 \pm 0.25
Ranikhet (Petrol pump)	31.05 \pm 2.12	86.87 ^a \pm 7.69	14.03 ^b \pm 0.94	5.46 ^a \pm 0.57
Nainital (Bus stand)	42.11 \pm 3.31	91.83 ^a \pm 8.14	37.04 ^a \pm 2.74	1.64 \pm 0.15
Nainital (Mallital)	23.42 ^a \pm 1.93	66.22 ^a \pm 5.62	23.60 ^a \pm 1.36	1.27 \pm 0.12
Nainital (Tallital)	17.31 \pm 0.97	114.08 ^a \pm 11.45	36.66 ^a \pm 2.62	1.63 \pm 0.14
Nainital (Capitol cinema)	18.77 \pm 0.81	46.48 ^a \pm 3.63	14.72 ^b \pm 0.94	5.61 \pm 0.55
Bhowali (Bus stand)	22.60 ^a \pm 1.22	50.83 ^a \pm 4.03	19.04 ^a \pm 0.96	4.22 \pm 0.45
Ramgarh malla	20.33 ^a \pm 1.01	53.18 ^a \pm 4.35	16.82 \pm 0.96	1.66 \pm 0.15
Pithoragarh (Siltham)	17.14 \pm 0.97	42.29 ^a \pm 3.26	15.21 \pm 0.95	3.07 ^b \pm 0.34
Pithoragarh (Market area)	27.95 ^a \pm 1.72	79.53 ^a \pm 6.94	10.48 ^b \pm 0.90	6.20 ^a \pm 0.65
Pithoragarh (Bus stand)	22.40 ^a \pm 1.21	25.03 ^b \pm 1.55	10.12 ^b \pm 0.90	2.83 ^b \pm 0.25

Table 1: Continued

Catchment sites	MONSOON			
	Pb	Zn	Cu	Cd
Mukteswar forest	8.39±0.81	17.90±0.97	9.86±0.97	1.65±0.15
Deenapnai	13.83±0.91	28.21 ^a ±1.89	7.28 ^b ±0.72	4.55 ^a ±0.42
Jageswar	10.16 ^b ±0.91	31.93 ^a ±2.12	8.12 ^b ±0.83	0.86 ^b ±0.03
Hwalbagh	10.45 ^b ±0.90	20.52±1.03	10.15 ^b ±0.90	0.08±0.01
Almora (Mall road)	11.04±0.91	26.98 ^a ±1.61	9.77 ^b ±0.92	1.93±0.15
Kosi (G.B. Pant institute)	10.42 ^b ±0.910	35.52 ^a ±2.55	10.70 ^b ±0.90	4.39±0.42
Almora (Petrol pump)	18.06 ^a ±0.98	39.82 ^a ±2.93	10.77 ^b ±0.90	2.52±0.20
Ranikhet (Golf court)	15.14 ^a ±0.91	49.97 ^a ±3.94	6.58±0.63	2.16±0.21
Ranikhet (Bus stand)	11.43 ^b ±0.91	44.57 ^a ±3.46	6.84±0.64	1.42±0.14
Ranikhet (Petrol pump)	15.63 ^a ±0.95	54.38 ^a ±4.54	8.20±0.85	2.77±0.22
Nainital (Bus stand)	20.03 ^a ±1.90	50.70 ^a ±4.03	18.29 ^a ±0.98	0.79 ^b ±0.04
Nainital (Mallital)	12.44±0.92	41.10 ^a ±3.11	13.11±0.93	0.61 ^b ±0.02
Nainital (Tallital)	9.40 ^b ±0.91	72.30 ^a ±6.23	20.51 ^a ±1.04	0.78 ^b ±0.04
Nainital (Capitol cinema)	10.80 ^b ±0.91	31.45 ^a ±2.15	8.79 ^b ±0.83	2.70±1.72
Bhowali (Bus stand)	11.68±0.91	30.70 ^a ±2.05	10.29±0.90	2.03±0.24
Ramgarh malla	11.88±0.91	36.26 ^a ±2.66	10.11±0.90	0.80 ^b ±0.82
Pithoragarh (Siltham)	9.27 ^b ±0.91	28.08 ^a ±1.81	9.27 ^b ±0.93	1.99±0.14
Pithoragarh (Market area)	14.08±0.94	48.80 ^a ±3.82	5.98±0.52	4.03 ^a ±0.35
Pithoragarh (Bus stand)	11.03 ^b ±0.91	17.90±0.97	5.73±4.31	1.84±0.96

Since high-octane petrol (with 0.45 g lead/ l) is still used in the majority of the cars, the deposition values are positively related to the traffic (and population) density. This reflects their high value in moss transplanted at petrol pumps or along the road (near bus stands) in Almora and Nainital as compared to other catchment areas.

Comparison of metal Pb concentration in different seasons exhibited its lowest concentration in rainy season could be attributed to decrease of tourists in the rainy season and secondly pollutant leaching and increase in growth and biomass occurs more rapidly as a result it reduces the metal percentage in leaves in proportion to biomass (Saxena and Arfeen, 2010; Saxena *et al.*, 2010).

Metal zinc

Maximum percent increase of metal Zn was observed at the same spots similar to Pb. The value of Regression correlation ($R^2= 0.8781$) for Pb-Zn during year 2004 in Almora and Pithoragarh deployed their coexistence (Saxena *et al.*, 2010) (Table 2). The locations closed to orchards sites like Kosi, Ranikhet golf court, which are used to grow fruits (apples, peach, plums, pear, oranges)

in which Zn was applied as a nutrient, exhibited increase in Zn during summer. Increase in Zn in this area is amply documented by fact that Zinc is used as element to promote the growth of orchards (Saxena and Saxena, 2000; Molina *et al.*, 2009) and was applied through foliar or aerial spray.

A seasonal trend for metal Zn justifies that summer had high value of Zn followed by winter and rain (Figs. 1b, 2b and 3b). Heavy rain fall could be one another way to explain the decrease in Zn load as most of the metal Zn was surface adsorbed (Bate, 1992). The enrichment ratios for Zn in moss were not constant through out the year; therefore, interpretation of enrichment of Zn is complicated (Makhholm and Miladenoff, 2005). Beside as a nutrient, farmers also implicate Zinc as Zn – based insecticides or fungicides (Molina *et al.*, 2009). The high concentration of metal Zn was recorded in moss of at tourist places i.e. Nainital (Tallital & bus stand) and Almora (Mall road) during winter (Table 1). Here we cannot over rule the role of traffic to increase Zn content of the air as it is the part of automobile stratum (Shahmansouri *et al.*, 2005).

Metal copper

In comparison to Pb and Zn, a moderate deposition rate of metal copper was observed from same catchment areas. Metal Cu was high in populated as well as rural areas (Figs. 1c, 2c and 3c). Maximum value of copper was in Almora during all the three seasons (Table 1). Therefore, present finding is further supported by the presence of abundant Cu mosses in these areas (Saxena *et al.*, 2007). A decrease in Cu in winter with respect to summer could be explained by considering that dry deposition increases on moving from humid to arid climates (Couto *et al.*, 2004).

Concentration and distribution pattern of both metal Zn and Cu in *R. crispulum* were quite similar and both metals were high in rural transplants located in vicinity of orchards. Cu contamination mainly originates from fertilizers, fungicides and pesticides used in agricultural areas (Otvos, 2003). A significant correlation were found between Zn and Cu content ($R^2 = 0.8804$) in *R. crispulum* of Kumaon hill (Table 2). Cu pollution may also originate from domestic waste disposal. The use of CuSO_4 mixed kerosene oil could also one of the facts of increase of Cu concentration in domestic areas.

Table 2: Correlation coefficients amongst metal concentration in Kumaon Hill (India) through active monitoring using *R. crispulum* as a biomonitoring species

	Pb	Zn	Cu	Cd
Pb	1.0000			
Zn	0.8781	1.0000		
Cu	0.6113	0.8804	1.0000	
Cd	0.4618	0.5801	0.4236	1.0000

Metal cadmium

Cadmium metal is very easily leached out from surface and the similar results were observed in monsoon season in moss *R. crispulum*. All catchment areas shows significant ($p \leq 0.01$) decrease in metal Cd value in rainy season with respect to summer (Table 1). Easily leaching property could be the reason for there low value even in the forest areas (Fernández, *et al.*, 2009) but a different experiment of Cd adsorption on surface reports that kinetics study for the rate of

adsorption is also an important factor to consider before commenting on leaching property (Izanloo and Nasser, 2005). There is a frequent use of breaks in the hilly region compare to the land areas. This could be the reason for high value of Cd at Ranikhet (petrol pump) in winter (Fig. 2d). An increase in the Cd on such places could be from abrasion of clutch, breaks of the vehicles. Higher concentration in agricultural land might be due to the use of phosphate fertilizers (Otvos, 2003). Perhaps Cd is also present in the petrol as mining impurities. Service shops of batteries, bicycles, automobiles and metal utensils are the other factors for this elevation.

Percent metal load and pollution index value

The pollution index value at Nainital bus stand, Almora mall road, Kosi, Almora petrol pump, Ranikhet petrol pump and Pithoragarh market area was +1.102393, +1.012493, +1.075294, +1.109318, + 1.013296 and +1.000281, respectively (Table 3).

Table 3: Comparison of pollution index (PI) value determined by using moss *R. crispulum* as a biomonitoring species exposed in Kumaon hills.

Catchment Sites	PI
Mukteswar forest	-1.73241
Deenapnai	0.13038
Jageswar	-0.59865
Hwalbagh	0.34087
Almora (Mall road)	1.012493
Kosi (G.B. Pant inst.)	1.075294
Almora (Petrol pump)	1.109318
Ranikhet (Golf court)	0.020039
Ranikhet(Bus stand)	0.100131
Ranikhet (Petrol pump)	1.013296
Nainital (Bus stand)	1.102393
Nainital(Mallital)	0.723167
Nainital (Tallital)	0.209319
Nainital (Capitol cinema)	0.912817
Bhowali (Bus stand)	0.931823
Ramgarh (Ramgarh malla)	0.052352
Pithoragarh (Siltham)	0.101013
Pithoragarh (Market area)	1.000281
Pithoragarh (Bus stand)	0.142591

High value of percent metal load at Nainital (Tallital) during experimental year 2004 was significant result. This could be explained by taking into consideration of internal environment factor like meta-data influencing the metal deposition (De Ceritat, 2001). In addition, converting the value measured in biomonitor into deposition value is problematic because there is no enough information available about the factor affecting the concentration in mosses (Wolterbeek *et al.*, 2003; Berg *et al.*, 2003).

The PI value was highly positive at the areas near by bus stand and at petrol pumps. This was further supported by percent metal loading in respective locations during these years. The maximum positive values were measured in proximity to the city area. Negative value at Mukteshwar forest reveals that it is relatively cleaner site (pollution free). The effect of intensity of traffic compared to the influence of other factors like farming on sampling points are much higher as the spots were nearer to the roads (except control site). Besides this, contamination was high and reduces with distance (Tuba *et al.*, 1994).

In conclusion, the present research gives the supportive evidence of metal pollution on Himalaya. Elemental concentration in *R. crispulum* was in order $Zn > Pb \sim Cu > Cd$ in summer while, same was $Zn > Cu > Pb > Cd$ in winter season and in rain $Zn > Cu > Pb > Cd$ indeed reflects atmospheric trace elemental load. Amongst season summer deployed maximum metal load followed by winter and monsoon. Present study describes that Nainital is most polluted for heavy metal (Pb, Zn, Cu and Cd) followed by Almora and Pithoragarh. Present funded study of ministry of Science and Technology, Government of India is very useful for policy makers to take necessary steps for control measure on Himalayan belt, which directly reflect the weather condition of north India.

ACKNOWLEDGEMENTS

The present study was supported with financial assistance of Department of Biotechnology, Ministry of Science and Technology, Govt. of India (Grant no. BT/PR3 108/BCE/08/235/2002). Authors would like to thanks Prof. Tamas Poés of Eager University and late Prof. Zoltan Tuba,

Szent Istvan University, Hungary for their critical comments on manuscript. Thanks are also extended to head of institution.

REFERENCES

- Amundsen, C. E., Almes, E., Singh, B. R., (2000). Cadmium in soil, soil solution, and plants. Data as basis of risk assessment of Cd in mineral fertilizers. Jordforsk-report 1/2000. Center for soil and environmental research, Frederik A. Dahlsvei 20, N-1430 Es, Norway.
- Bargagli, R., (1998). Trace elements in terrestrial plants, An ecophysiological approach to biomonitoring and biorecovery. Springer Verlag, Berlin, New York. pp. 324.
- Bate, J. W., (1992). Mineral nutrient acquisition and retention by bryophytes. – *J. Bryol.* **17**:223–240.
- Berg, T., Hjelmbrekke, A., Rühling, Å., Steinnes, E., Kubin, E., Larsen, M. M., Piispanen, J., (2003). Absolute deposition maps of heavy metals for the Nordic countries based on moss surveys. *TemaNord.* **505**:pp.36.
- Couto, J. A., Aboal, J. R., Fernandez, J. A., Carballeira, A., (2004). A new method for testing the sensitivity of active biomonitoring: an example of its application to a terrestrial moss. *Chemosphere.*, **57**(4): 303-308.
- De Ceritat, P., Reimann, C., Bogatyrev, I., Chekuskin, V., Finn, T.E., Halleraker, J.H., Kashulina, G., Niskavaara, H., Pavlov, V., Ayras, M., (2001). Regional distribution of Al, B, Ba, Ca, K, La, Mg, Mn, Na, P, Rb, Si, Sr, Th, U and Y in terrestrial moss within a 188,000 km² area of the central Barents region: influence of geology, sea spray and human activity. *Appl. Geochem.* **16**: 137-159.
- Fergusson, J. E., (1990). The heavy elements: Chemistry, Environmental impact and health effect. Pergamon press, New York., 429-457.
- Fernández, J.A., Ederra, A., Núñez, E., Martínez-Abaigar, J., Infante, M., Heras, P., Elias, M. J., Mazimpaka, V., Carballeira, A., (2002). Biomonitoring of metal deposition in northern Spain by moss analysis. *Sci. total. Environ.*, **300**: 115-127.
- Fernandez, J. A., Aboal, J. R., Caballeira, A., (2004). Identification of pollution sources by means of moss bags. *Ecotox. Environ. Safe.*, **59** (1): 76-83.
- Fernández, J. A., Aboal, J. R., Carballeira, A., (2009). Testing differences in methods of preparing moss samples. Effect of washing on *Pseudoscleropodium purum*. *Environ. Monit. Assess.* ISSN 1573-2959 (Online).
- Glime, M. J., Saxena, D. K., (1991). 'Uses of Bryophytes'. Today & Tomorrow's Printers & Publisher, N. Delhi, India: 1-100.
- Grodzinska, K., Godzik, B., Sjurek, G., (1993). Heavy metals and sulphur in moss from southern Spitsbergen. *Froglmenta Floristica Et Geobotanica.* **2** (2): 699-708.
- Halleraker, J. H., Reimann, C., Caritat, P., de Finne, T. E., Kashulina, F., Niskaavaara, H., Bogatyrev, I., (1998). Reliability of moss (*Hylocomium splendens* and *Pleurozium shreberi*) as a bioindicator of atmospheric chemistry in the Barents region: Interspecies and field duplicate variability. *Sci. total. Environ.*, **218**: 123-139.
- Imperial Gazetter- Atlas of India., (1931). Oxford at the clarendon press vol: XXVI

- Izanlo, H., Nasser, S. (2005). Cadmium Removal from Aqueous Solutions by Ground Pine Cone. Iranian J. Environ. Health Sci. Eng, **2**(1): 33-42.
- Karner, C. Y., (1956). Extension of multiple range tests to group means with unequal numbers of replication. Biometrics., **12**: 307-310.
- Makholm, M. M., Miladenoff David, J., (2005). Efficacy of a biomonitoring (moss bag) technique for determining element deposition trends on a mid – range (37 Km) scale. Environmental Monitoring and Assessment., **104**: 1-18.
- Markert, B., Wappelhorst, O., Weckert, V., Herpin, U., Siewers, U., Friese, K., Breulmann, G., (1999). The use of bioindicators for biomonitoring the heavy-metals status of the environment. J. Radioanal. Nuclear chem., **240** (2):425-429.
- Molina, M., Aburto, F., Caldern, R., Cazanga, M., Escudey, M., (2009). Trace Element Composition of Selected Fertilizers Used in Chile: Phosphorus Fertilizers as a Source of Long-Term Soil Contamination. Soil and Sediment Contamination, **18** (4): 497-511.
- Otvos, E., Pazmandi, T., Tuba, Z., (2003). First national survey of atmospheric heavy metal deposition in Hungary by the analysis of mosses. Sci. total. Environ., **309**: 151-160.
- Pacyna, J. M., Pacyna, E. G., (2002). Sources of heavy metals, inventories and future scenarios. Second AMAP International Symposium on Environmental Pollution of the Arctic. Rovaniemi, O-006.
- Poikolainen, J., Kubin, E., Piispanen, J., Karhu, J., (2004). Atmospheric heavy metal deposition in Finland during 1985-2000 using mosses as bioindicators. Sci. total. Environ., **318**: 171-185.
- Sardans, J., Peñuelas, J., (2005). Trace element accumulation in the moss *Hypnum cupressiforme* Hedw. and the trees *Quercus ilex* L., and *Pinus halepensis* Mill. in Catalonia. Chemosphere., **60**: 1293–1307.
- Saxena, D. K., Arfeen, M. S., (2009). Effect of Cu and Cd on Oxidative enzymes and chlorophyll content of moss *Racomitrium crispulum*. Taiwania, **54**(4): 365-374.
- Saxena, D. K., Tuba, Z., Arfeen, M. S., (2010). Seasonal passive metal monitoring during year 2003 to 2006 in Nainital of Kumaon hills (INDIA) by moss *Racomitrium crispulum*. Acta Botanica Hungarica, **52**(1-2): 273-297.
- Saxena, D. K., Arfeen, M. S., (2010). Active biomonitoring of atmospheric elemental deposition by *Bryum* species around Almora, Nainital and Pithoragarh of Kumaon hills. Env.Poll.Tech.. (In Press).
- Saxena, D. K., Saxena, A., (2000). Uptake of metals in *Plagiochasma* and their uses in pollution monitoring. Geophytology., **28**(1&2): 129-137.
- Saxena, D. K., Srivastava, K., Singh, S., (2007). *Barbula* species from Kumaon and Garhwal hills of Uttarakhand region (India). Proc Natn Acad Sci India (Sect B), 215-219.
- Saxena, D. K., Srivastava, K., Singh, S., (2008a). Retrospective metal data of the last 100 years deduced by moss, *Barbula* sp. from Mussoorie city, Garhwal Hills, India. Curr. Sci., **94** (7): 901-904.
- Saxena, D. K., Singh, S., Srivastava, K., (2008b). Atmospheric Heavy Metal Deposition in Garhwal Hill Area (India): Estimation Based on Native Moss Analysis. Aerosol and Air Quality Research., **8**(1): 94-111.
- Shahmansouri, M. R., Pourmoghadas, H., Parvaresh, A. R., Alidadi, H., (2005). Heavy Metals Bioaccumulation by Iranian and Australian Earthworms (*Eisenia fetida*) in the Sewage Sludge Vermicomposting. Iran.J. Env. Health Sci. Eng., **2** (1): 28-32.
- Singh, B. R., Almes, E., Amundsen, C. E., Meltzer, H. M., Alexander, J., (1999). Cadmium in fertilizers; soil-plant system, environment and human health. Norwegian Agricultural Inspection Service, N-140 Es, Norway.
- Snedecor, G. W., Cochran, W. G., (1967). Statistical methods. Iowa State University, U. S. A. Oxford and I. B. H. Publishing Co., New Delhi.
- Soleimani, M., Rafinejad, J., (2008). House Dust mite Contamination in Hotels and Inns in Bandar Abbas, south of Iran. J. Environ. Health. Sci. Eng., **5** (3): 207-210.
- Sun, S. Q., Wang, D. Y., He, M., Zhang, C., (2009). Monitoring of atmospheric heavy metal deposition in Chongqing, China—based on moss bag technique. Environ. Monit. Assess., **148**(1-4): 1-9.
- Thöni, L., Schnyder, N., Krieg, F., (1996). Comparison of metal concentrations in three species of mosses and metal freights in bulk precipitations. Fresenius' J.Analytical Chem., **354**: 704-708.
- Tuba, Z., Csintalan, Z.s., Nagy, Z., Szenté, K., Takács, Z., (1994). Sampling of terricolous lichen and moss species for trace element analysis with special reference to bioindication of air pollution. In: Markert B (Ed): Sampling of environmental materials for trace analysis, 415-434. VHC Publisher, Weinheim, New York, Tokyo.
- Wolterbeek, H. T.h., Garty, J., Reis, M. A., Freitas, M. C., (2003). Biomonitoring in use: lichens and metal air pollution. In: markert BA, Breure AM & Zechmeister HG (eds). Bioindicators and biomonitoring. Elsevier, Oxford. 377-419.
- Yurukova, L., Gecheva, G., (2003). Active and passive biomonitoring using *Fontinalis antipyretica* in Maritsa River, Bulgaria. J. Balkan. Ecol., **6** (4): 390-397.