

## Microtubule-Associated Protein Tau, $\alpha$ -Tubulin and $\beta$ III-Tubulin Expression in Breast Cancer

Soyoung Im · Changyoung Yoo  
Ji-Han Jung · Ye-Won Jeon<sup>1</sup>  
Young Jin Suh<sup>1</sup> · Youn Soo Lee<sup>2</sup>  
Hyun Joo Choi

Departments of Hospital Pathology and <sup>1</sup>Surgery, St. Vincent's Hospital, The Catholic University of Korea College of Medicine, Suwon; <sup>2</sup>Department of Hospital Pathology, Seoul St. Mary's Hospital, The Catholic University of Korea College of Medicine, Seoul, Korea

Received: August 21, 2013  
Revised: October 25, 2013  
Accepted: October 28, 2013

### Corresponding Author

Hyun Joo Choi, M.D.  
Department of Hospital Pathology, St. Vincent Hospital, The Catholic University of Korea College of Medicine, 93 Jungbu-daero, Paldal-gu, Suwon 442-723, Korea  
Tel: +82-31-249-7592  
Fax: +82-31-244-6786  
E-mail: chj0103@catholic.ac.kr

**Background:** The microtubule-associated protein Tau binds to both inner and outer surfaces of microtubules, leading to tubulin assembly and microtubule stabilization. The aim of this study was to evaluate the significance of Tau,  $\alpha$ -tubulin, and  $\beta$ III-tubulin expression in breast carcinoma and to assess their relationships with disease progression in the context of taxane treatment. **Methods:** Immunohistochemical expressions of Tau,  $\alpha$ -tubulin, and  $\beta$ III-tubulin were assessed in 183 breast cancer cases. Expression was correlated with clinicopathologic parameters, disease progression and overall survival. **Results:** Tau expression was correlated with lymph node metastasis and estrogen receptor (ER) positivity ( $p = .003$  and  $p < .001$ , respectively). Loss of  $\alpha$ -tubulin was significantly correlated with distant metastasis ( $p = .034$ ). Loss of  $\beta$ III-tubulin was correlated with lymph node metastasis and ER positivity ( $p = .004$  and  $p < .001$ , respectively). In taxane-treated cases, Tau expression and loss of  $\alpha$ -tubulin and  $\beta$ III-tubulin expression were related to disease progression ( $p = .001$ ,  $p = .028$ , and  $p = .030$ , respectively). Tau expression was associated with a worse survival rate in taxane-treated patients ( $p = .049$ ). **Conclusions:** Tau expression and loss of  $\alpha$ -tubulin and  $\beta$ III-tubulin expression were correlated with aggressive behavior in taxane-treated breast cancer. Further evaluation of Tau,  $\alpha$ -tubulin and  $\beta$ III-tubulin may be useful in predicting clinical behavior and seeking therapeutic measures in taxane-based chemotherapy for breast cancer.

**Key Words:** Tau proteins; Tubulin; Taxoids; Breast neoplasms

Breast cancer is one of the most common malignancies and is the leading cause of cancer death among women.<sup>1</sup> The heterogeneous nature of its histology, phenotype and clinical behavior leads to the need for targeted therapeutic agents. Tau, a microtubule-associated protein (MAP), binds to both the inner and outer surfaces of microtubules, leading to tubulin assembly and microtubule stabilization.<sup>2</sup> Tubulin heterodimers consist of  $\alpha$ - and  $\beta$ -tubulins, and the  $\beta$ -subunit binds taxane and causes suppression of both microtubular dynamics and cell proliferation.<sup>3</sup> Overexpression of  $\beta$ III-tubulin has been demonstrated in a variety of malignancies, including non-small-cell lung cancer and ovarian, gastric, prostate and breast cancers.<sup>4</sup> Previous studies have implicated Tau and tubulin expression in breast cancer.<sup>5-11</sup> The purpose of this study was to evaluate the expression of the MAP Tau,  $\alpha$ -tubulin, and  $\beta$ III-tubulin in breast cancer and correlate their expressions with known clinicopathologic parameters,

disease progression and overall survival of patients. Furthermore, the relationships among Tau,  $\alpha$ -tubulin, and  $\beta$ III-tubulin expression and disease progression and overall survival of the patients were also evaluated in the context of taxane use as adjuvant chemotherapy.

## MATERIALS AND METHODS

### Clinical samples

A total of 183 primary breast carcinoma patients who had undergone surgical resection at St. Vincent's Hospital (Suwon, Korea) between January 1999 and August 2007 and had available follow-up data were included in this study. Neither chemotherapy nor radiotherapy was performed before surgery. Formalin-fixed paraffin-embedded (FFPE) tissue and clinical data were collected for each patient. All of the archival hematoxylin and

eosin (H&E)-stained slides for each patient were reviewed. The nuclear grades and histologic grades were evaluated according to the Nottingham grading system.<sup>12</sup> The tumor stages were evaluated according to the criteria of the 7th edition of the American Joint Committee on Cancer (AJCC). Medical records were collected and reviewed retrospectively. Disease progression was defined as local recurrence, distant metastasis or disease-related death. This study was approved by the Institutional Review Board of The Catholic University of Korea (VC12SISI0158).

### Tissue microarray

Tissue microarrays (TMAs) were constructed from FFPE tissue blocks of 183 invasive carcinomas. The representative tumor site was chosen on H&E slides, and the site corresponding to the confirmed tumor site in the paraffin block was marked. Areas with necrosis, hemorrhage and artifacts were excluded. One selected area per each case was harvested using a 2-mm Quick-Ray tip-punch (Micro Digital Co., Seoul, Korea) and was transferred to a TMA mold with 60 pores and re-embedded with paraffin. TMA blocks were prepared as 4- $\mu$ m-thick sections and were stained with H&E staining methods. The tissues were then examined to determine whether the appropriate tumor site had been selected.

### Immunohistochemistry

Immunohistochemical staining was conducted on 4- $\mu$ m sections of the TMA blocks. The paraffin sections were mounted on poly-L-lysine-coated glass slides, deparaffinized, and rehydrated in a graded series of ethanol, followed by antigen retrieval using a microwave. Endogenous peroxidase activity was blocked by treating the slides with 3% H<sub>2</sub>O<sub>2</sub> in methanol for 10 minutes at room temperature. The primary antibodies were incubated overnight at 4°C. The following primary antibodies were used: Tau (1:200, #RB-1239-R7, Lab Vision, Fremont, CA, USA),  $\alpha$ -tubulin (1:200, #RB-9281-R7, Lab Vision),  $\beta$ III-tubulin (1:800, MU177-UC, BioGenex, San Ramon, CA, USA), estrogen receptor (ER; 1:300, 6F11, Novocastra, Newcastle upon Tyne, UK), progesterone receptor (PR; 1:600, 16, Novocastra), and HER2 (1:1,800, polyclonal, Dako, Glostrup, Denmark). Immunostaining was conducted using the rabbit or mouse DAKO Chem-Mate EnVision system and Peroxidase/DAB kit (Dako). The sections were then counterstained with Mayer's hematoxylin and dehydrated, cleared, and mounted. Normal breast epithelium was used as a positive control for Tau. Skin tissue was used as a positive control for  $\alpha$ -tubulin and  $\beta$ III-tubulin. Omission of the primary antibody served as a negative control.

The immunohistochemical staining and histology were examined independently by two pathologists. Evaluation was performed twice for each case without any knowledge of the specific diagnosis or prognosis. The cases with discrepant scores were discussed between pathologists to obtain a consensus. Immunoreactivity was interpreted in the cytoplasm for Tau,  $\alpha$ -tubulin, and  $\beta$ III-tubulin. The staining intensity was graded as follows: 0, negative; 1+, weak; 2+, moderate; and 3+, intense. Staining intensity of 0 or 1+ was interpreted negative, and tumors with 2+ or 3+ staining intensity were interpreted as positive.

### Statistical analysis

Statistical analyses were performed using SPSS ver. 13.0 (SPSS Inc., Chicago, IL, USA). The two-sided p-values were determined via chi-square tests and Fisher's exact test to evaluate the associations of expression of markers with clinicopathologic features of tumor and disease progression. Overall survival was analyzed using the Kaplan-Meier method with log-rank test. A value of  $p < .05$  was considered significant for all of the analyses.

## RESULTS

### Patient characteristics

The mean age of the 183 patients was 51.5 years (range, 30 to 81 years). The median follow-up duration was 75.4 months (range, 2.3 to 179 months) after the primary surgery. One hundred forty-two (77.6%) patients were treated with adjuvant chemotherapy. Forty-five of those (31.7%) received taxane (docetaxel or paclitaxel)-containing regimens. Of the 183 total patients, 14 (7.7%) had local recurrence, 30 (16.4%) developed distant metastasis, and 19 (10.4%) died due to disease during follow-up.

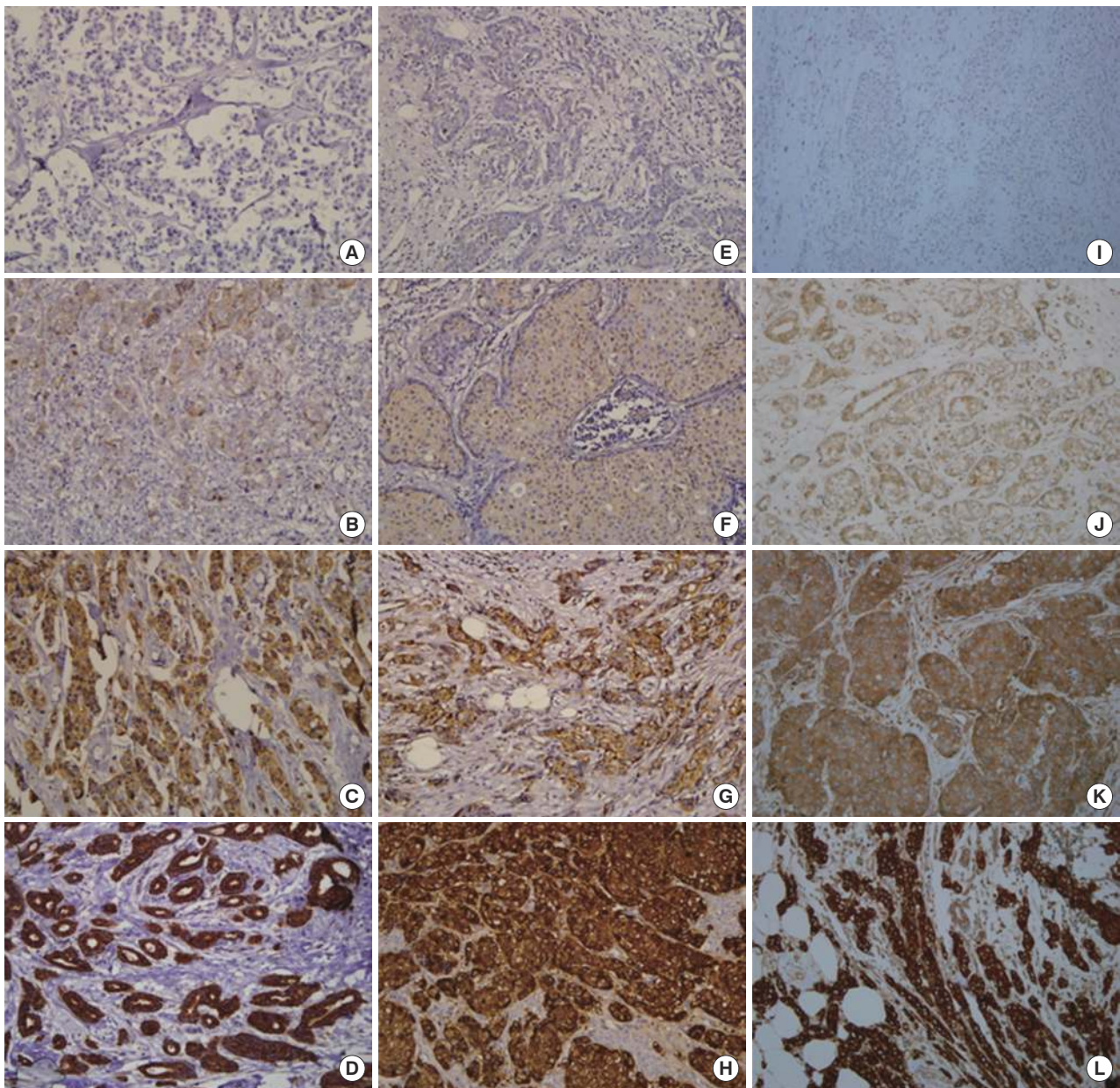
### Expression of Tau, $\alpha$ -tubulin, and $\beta$ III-tubulin

Normal breast epithelium expressed Tau with moderate (2+) staining. Occasional weak (1+) to moderate (2+) staining of  $\alpha$ -tubulin and  $\beta$ III-tubulin was observed in the normal breast epithelium. Of the 183 breast carcinoma cases, Tau,  $\alpha$ -tubulin, and  $\beta$ III-tubulin were expressed in 114 (62.3%), 54 (29.5%), and 111 (60.7%) cases, respectively. Representative examples of the immunohistochemical staining for each protein are presented in Fig. 1.

### Relationships between Tau, $\alpha$ -tubulin, and $\beta$ III-tubulin and clinicopathologic factors

The correlations between Tau,  $\alpha$ -tubulin, and  $\beta$ III-tubulin and clinicopathological variables are presented in Table 1. Tau





**Fig. 1.** Immunohistochemical results for Tau,  $\alpha$ -tubulin, and  $\beta$ III-tubulin. Tau: 0 (A), 1+ (B), 2+ (C), and 3+ (D);  $\alpha$ -tubulin: 0 (E), 1+ (F), 2+ (G), and 3+ (H); and  $\beta$ III-tubulin: 0 (I), 1+ (J), 2+ (K), and 3+ (L).

expression was significantly associated with lymph node metastasis ( $p=.003$ ). On the contrary, expressions of  $\alpha$ -tubulin and  $\beta$ III-tubulin were inversely correlated with lymph node metastasis ( $p=.032$  and  $p<.001$ , respectively). Tau and  $\beta$ III-tubulin expression was significantly associated with higher nuclear grade ( $p<.001$  and  $p=.006$ , respectively) and higher histologic grade ( $p<.001$  and  $p<.001$ , respectively). Tau expression was significantly increased in ER- and PR-positive cases ( $p<.001$  and  $p<.001$ , respectively), and in HER-2-negative cases ( $p=.001$ ).  $\beta$ III-tubulin expression was significantly increased in ER-nega-

tive cases ( $p<.001$ ).

#### Relationships between Tau, $\alpha$ -tubulin, and $\beta$ III-tubulin expression and disease progression

The correlations between Tau,  $\alpha$ -tubulin, and  $\beta$ III-tubulin and local recurrence of the tumor, distant metastasis or disease-related death are presented in Table 2. Local recurrence or disease-related death was not correlated with expression of any of these proteins. However, loss of  $\alpha$ -tubulin expression was significantly associated with distant metastasis ( $p=.034$ ).

**Table 1.** Relationships between Tau,  $\alpha$ -tubulin, and  $\beta$ III-tubulin expression and clinicopathologic factors of breast cancer

Clinicopathologic factor			No. of positive cases (%)					
			Tau		$\alpha$ -Tubulin		$\beta$ III-Tubulin	
		No. of cases (%)		p-value		p-value		p-value
Age (yr)	<50	99 (54.1)	66 (57.9)	.185	35 (64.8)	.060	65 (58.6)	.133
	≥50	84 (45.9)	48 (42.1)		19 (35.2)		46 (41.4)	
T stage	1	59 (32.2)	39 (34.2)	.602	20 (37.0)	.425	40 (36.0)	.257
	2	107 (58.5)	66 (57.9)		31 (57.4)		63 (56.8)	
	3	17 (9.3)	9 (7.9)		3 (5.6)		8 (7.2)	
LN metastasis	0	96 (52.5)	49 (43.0)	.003*	36 (66.7)	.032*	69 (62.2)	.004*
	1-3	52 (28.4)	41 (36.0)		9 (16.7)		24 (21.6)	
	≥4	35 (19.1)	24 (21.1)		9 (16.7)		18 (16.2)	
Stage	I	34 (18.6)	20 (17.5)	.135	15 (27.8)	.079	25 (22.5)	.077
	II	102 (55.7)	59 (51.8)		29 (53.7)		63 (56.8)	
	III	47 (25.7)	35 (30.7)		10 (18.5)		23 (20.7)	
Nuclear grade	1	11 (6.0)	11 (9.6)	<.001*	3 (5.6)	.843	6 (5.4)	.006*
	2	100 (54.6)	69 (60.5)		28 (51.9)		51 (45.9)	
	3	72 (39.3)	34 (29.8)		23 (42.6)		54 (48.6)	
Histologic grade	1	31 (16.9)	28 (24.6)	<.001*	7 (13.0)	.341	18 (16.2)	.001*
	2	75 (41.0)	52 (45.6)		20 (37.0)		35 (31.5)	
	3	77 (42.1)	34 (29.8)		27 (50.0)		58 (52.3)	
ER	-	94 (51.4)	35 (30.7)	<.001*	28 (51.9)	.932	71 (64.0)	<.001*
	+	89 (48.6)	79 (69.3)		26 (48.1)		40 (36.0)	
PR	-	106 (57.9)	48 (42.1)	<.001*	31 (57.4)	.927	70 (63.1)	.080
	+	77 (42.1)	66 (57.9)		23 (42.6)		41 (36.9)	
HER2	-	129 (70.5)	90 (78.9)	.001*	43 (79.6)	.079	77 (69.4)	.679
	+	54 (29.5)	24 (21.1)		11 (20.4)		34 (30.6)	

LN, lymph node; ER, estrogen receptor; PR, progesterone receptor.

\*Statistically significant ( $p < .05$ ).**Table 2.** Relationships between disease progression and Tau,  $\alpha$ -tubulin, and  $\beta$ III-tubulin expression

Total (n = 183)			Local recurrence			Distant metastasis			Disease related death		
			-	+	p-value	-	+	p-value	-	+	p-value
Tau	-	69 (37.7)	65 (94.2)	4 (5.8)	.463	59 (85.5)	10 (14.5)	.589	64 (92.8)	5 (7.2)	.279
	+	114 (62.3)	104 (91.2)	10 (8.8)		94 (82.5)	20 (17.5)		100 (87.7)	14 (12.3)	
$\alpha$ -Tubulin	-	129 (70.5)	116 (89.9)	13 (10.1)	.056	103 (79.8)	26 (20.2)	.034*	113 (87.6)	16 (12.4)	.166
	+	54 (29.5)	53 (98.1)	1 (1.9)		50 (92.6)	4 (7.4)		51 (94.4)	3 (5.6)	
$\beta$ III-Tubulin	-	72 (39.3)	65 (90.3)	7 (9.7)	.396	59 (81.9)	13 (18.1)	.625	62 (86.1)	10 (13.9)	.210
	+	111 (60.7)	104 (93.7)	7 (6.3)		94 (84.7)	17 (15.3)		102 (91.9)	19 (10.4)	

Values are presented as number (%).

\*Statistically significant ( $p < .05$ ).

Of the 142 patients who were treated by adjuvant chemotherapy, 45 (31.7%) received a taxane-containing regimen and 97 (68.3%) received a non-taxane-containing regimen. Disease progression was defined as local recurrence of the tumor, distant metastasis or disease-related death. The correlations between Tau,  $\alpha$ -tubulin, and  $\beta$ III-tubulin and disease progression according to the use of taxane are presented in Table 3. In the group treated with the taxane-containing regimen, Tau expression and loss of  $\alpha$ -tubulin and  $\beta$ III-tubulin expression were also significantly associated with disease progression ( $p = .001$ ,  $p = .028$ , and  $p = .030$ , respectively). However, Tau,  $\alpha$ -tubulin, and  $\beta$ III-tubulin expression did not correlate with disease progression in

the non-taxane-containing chemotherapy group ( $p = .943$ ,  $p = .241$ , and  $p = .931$ , respectively).

### Overall patient survival

The differences in overall survival rate according to clinicopathologic and immunohistochemical parameters are summarized in Table 4. Lymph node metastasis and stage were the only factors that were significantly correlated with overall survival ( $p < .000$  and  $p = .017$ , respectively). Tau,  $\alpha$ -tubulin, and  $\beta$ III-tubulin expression did not show any statistically significant relationship to overall survival in the whole patient sample ( $p = .258$ ,  $p = .169$ , and  $p = .325$ , respectively). In the group that received

**Table 3.** Relationships between Tau,  $\alpha$ -tubulin, and  $\beta$ III-tubulin expression and disease progression according to the use of taxane-based chemotherapy

		Non-taxane-containing regimen			Taxane-containing regimen			Chemotherapy received patients		
		n=97	No. of progressions (%)	p-value	n=45	No. of progressions (%)	p-value	n=142	No. of progressions (%)	p-value
Tau	-	37	7 (18.9)	.943	19	1 (5.3)	.001*	56	8 (14.3)	.041*
	+	60	11 (18.3)		26	14 (53.8)		86	25 (29.1)	
$\alpha$ -Tubulin	-	70	15 (21.4)	.241	29	13 (44.8)	.028*	99	28 (28.3)	.031*
	+	27	3 (11.1)		16	2 (12.5)		43	5 (11.6)	
$\beta$ III-Tubulin	-	44	8 (18.2)	.931	17	9 (52.9)	.030*	61	17 (27.9)	.257
	+	53	10 (18.9)		28	6 (21.4)		81	16 (19.8)	

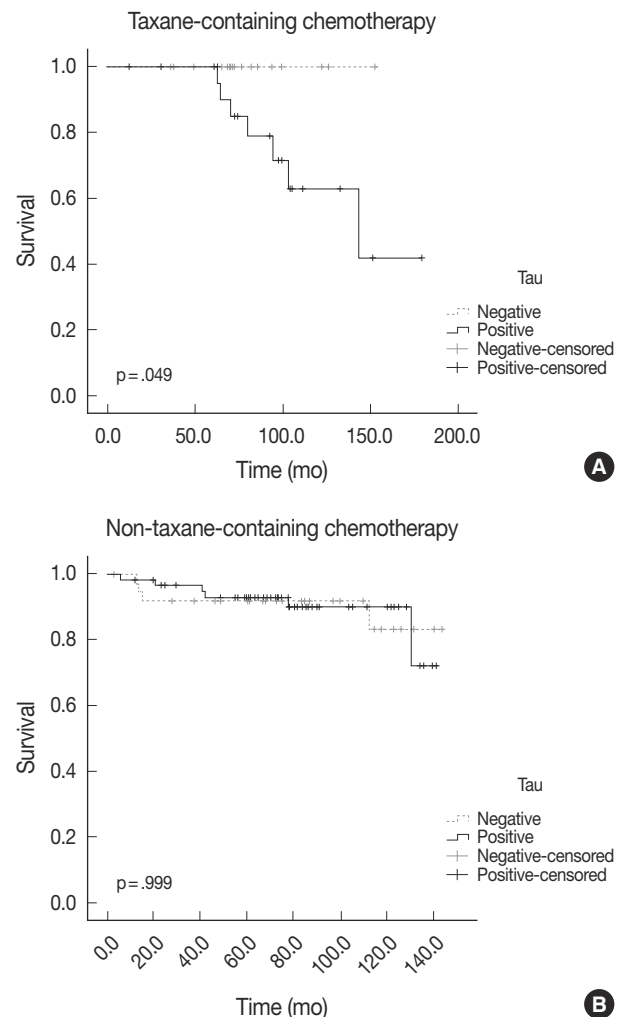
\*Statistically significant ( $p < .05$ ).**Table 4.** Kaplan-Meier analysis of overall survival

		Kaplan-Meier analysis		
		n	No. of deceased	p-value
Age (yr)	<50	99	10	.659
	≥ 50	84	9	
T stage	1	59	4	.151
	2	107	11	
	3	17	4	
LN metastasis	0	96	2	< .000*
	1-3	52	11	
	≥ 4	35	6	
Stage	I	34	1	.017*
	II	102	9	
	III	47	9	
Tau	−	69	5	.258
	+	114	14	
α-Tubulin	−	129	16	.169
	+	54	3	
βIII-Tubulin	−	72	10	.325
	+	111	9	
Taxane-containing chemotherapy group				
Tau	−	19	0	.049*
	+	26	7	
α-Tubulin	−	29	7	.066
	+	16	0	
βIII-Tubulin	−	17	4	.396
	+	28	3	
Non-taxane-containing chemotherapy group				
Tau	−	37	4	.999
	+	60	6	
α-Tubulin	−	70	8	.578
	+	27	2	
βIII-Tubulin	−	44	4	.758
	+	53	6	

LN, lymph node.

\*Statistically significant ( $p < .05$ ).

taxane-containing regimens, patients with Tau expression had a poor overall survival rate ( $p = .049$ ). However,  $\alpha$ -tubulin and  $\beta$ III-tubulin expression did not show any statistically significant relationship to overall survival in this group ( $p = .066$  and  $p = .396$ , respectively). Tau,  $\alpha$ -tubulin, and  $\beta$ III-tubulin expression did not relate to overall survival in patients treated with a non-

**Fig. 2.** Survival curve according to Tau expression. (A) Patients with Tau expression have a worse overall survival rate in the taxane-containing chemotherapy group ( $p = .049$ ). (B) In the non-taxane-containing chemotherapy group, Tau expression does not affect the overall survival ( $p = .999$ ).

taxane-containing regimen ( $p = .999$ ,  $p = .578$ , and  $p = .785$ , respectively). The overall survival according to Tau expression and taxane treatment is depicted in Fig. 2.



## DISCUSSION

MAPs are a family of proteins that bind to and stabilize microtubules. Tau, one of the most extensively investigated MAPs, binds to both the inner and outer surfaces of microtubules and plays an important role in the bundling, spacing and assembling of microtubules.<sup>6</sup> By sharing the same binding site as taxanes, Tau can compete with these drugs.<sup>13</sup> Taxanes (e.g., paclitaxel and docetaxel) bind to tubulin and cause suppression of microtubular dynamics, which inhibits spindle formation and leads to cell cycle arrest during the G2/M phase.<sup>2</sup>

Several studies regarding the prognostic and predictive value of Tau expression have been reported in the treatment of breast cancer. Rouzier *et al.*<sup>6</sup> evaluated Tau expression in 122 breast cancer patients who had received neoadjuvant chemotherapy of paclitaxel. Forty-four percent of Tau-negative tumors (28/64) had pathologic complete response (CR), compared with 17% of Tau-positive tumors (10/58) ( $p = .04$ ). Tanaka *et al.*<sup>9</sup> evaluated Tau expression in metastatic breast cancer patients. Sixty percent of Tau-negative expression showed favorable response (CR or partial response [PR]) to paclitaxel administration compared to 15% of Tau-positive expression. Shao *et al.*<sup>14</sup> analyzed Tau expression in 54 advanced breast cancer patients who received first-line chemotherapy of paclitaxel and cisplatin. Tau expression was significantly associated with lower overall response rate (CR or PR) ( $p = .02$ ). However, several studies have claimed contractor findings. Pentheroudakis *et al.*<sup>15</sup> evaluated Tau expression in 274 high-risk early breast cancer patients treated with paclitaxel, but Tau mRNA status did not predict a clinical benefit from taxanes. Andre *et al.*<sup>7</sup> reported that low Tau expression was associated with sensitivity to paclitaxel-containing preoperative chemotherapy in only ER-positive cases. Our results showed that Tau expression was significantly higher in the ER- and PR-positive groups ( $p < .001$  and  $p < .001$ , respectively), supporting the relationship with Tau and hormone-related factors. In this study, the response to chemotherapy was evaluated in the form of disease progression. Tau expression was associated with aggressive tumor behavior ( $p = .001$ ) in patients treated with taxane-containing regimen, suggesting that Tau-negative cases may benefit more from taxane-containing chemotherapy compared to Tau-positive cases. Tau expression was also associated with worse overall survival in patients treated with taxane-containing regimens ( $p = .049$ ).

Tubulin heterodimers consist of  $\alpha$ -tubulins and  $\beta$ -tubulins.  $\alpha$ -Tubulin is also a structural component of the centrosome with  $\gamma$ -tubulin. Niu *et al.*<sup>16</sup> reported that centrosomal  $\alpha$ -tubulin

and  $\gamma$ -tubulin were overexpressed in breast premalignant lesions and carcinoma, and that the expressions of  $\alpha$ -tubulin and  $\gamma$ -tubulin positively correlated with the development of breast cancer. Banerjee reported elevated levels of  $\alpha$ -tubulin in the paclitaxel-resistant cell line from MCF-7 breast cancer cells.<sup>17</sup> However, there have not been many additional studies about the associations of  $\alpha$ -tubulin expression and clinicopathologic features of breast cancer including disease progression. In our study, loss of  $\alpha$ -tubulin expression was significantly associated with lymph node metastasis ( $p = .032$ ) and distant metastasis ( $p = .034$ ). In the taxane-containing chemotherapy group, loss of  $\alpha$ -tubulin expression was significantly associated with disease progression rate (44.8% vs 12.5%,  $p = .028$ ). On the other hand,  $\alpha$ -tubulin did not show any correlation with disease progression in the non-taxane-containing chemotherapy group ( $p = .241$ ). This suggests that  $\alpha$ -tubulin expression can be used as a predictive marker for disease progression in taxane-containing chemotherapy. However,  $\alpha$ -tubulin expression was not related to overall survival in patients treated with taxane-containing regimens ( $p = .066$ ).

$\beta$ -Tubulin, the other component of the tubulin heterodimer, is known to have eight different isoforms.<sup>5</sup> Of these,  $\beta$ III-tubulin plays a critical role in cell proliferation, differentiation and tumorigenesis due to its unique depolymerization activity.<sup>14</sup> Overexpression of  $\beta$ III-tubulin has been demonstrated in a variety of malignancies, including non-small-cell lung cancer and carcinoma of the ovary, stomach, pancreas, prostate and breast.<sup>4</sup> Recent studies have reported the association of  $\beta$ III-tubulin expression with response to taxane treatment. Yuan *et al.*<sup>18</sup> investigated  $\beta$ III-tubulin expression in advanced breast cancer with docetaxel therapy. They reported that there were significant differences between the effective rate (CR+PR) of patients with positive expression of  $\beta$ III-tubulin (37.50%) and that of patients negative for expression (61.54%) ( $p < .01$ ). On the contrary, Wang *et al.*<sup>4</sup> reported that, in ER-negative tumors, high  $\beta$ III-tubulin expression was significantly associated with lower residual cancer burden in all patients treated with neoadjuvant chemotherapy ( $p = .021$ ) and in those treated with taxane ( $p = .038$ ). In our study,  $\beta$ III-tubulin expression was associated with higher nuclear and histologic grade ( $p = .006$  and  $p = .001$ , respectively). Loss of  $\beta$ III-tubulin was also associated with ER positivity ( $p < .001$ ). In the taxane-containing chemotherapy group, loss of  $\beta$ III-tubulin expression was significantly associated with a higher disease progression rate (52.9% vs 21.4%,  $p = .030$ ).  $\beta$ III-Tubulin did not show any correlation with disease progression in the non-taxane-containing chemotherapy group ( $p = .931$ ). This suggests that

loss of  $\beta$ III-tubulin expression could be used as an indicator of chemoresistance in taxane-based chemotherapy. However,  $\beta$ III-tubulin expression did not relate to overall survival in the taxane-containing chemotherapy group ( $p = .396$ ).

This study is limited as it was conducted retrospectively on surgically removed breast cancer tissue. The patients included in this study had received diverse treatments, and the response to chemotherapy was only available in the form of disease progression and overall survival.

Our data show that Tau expression and loss of  $\alpha$ -tubulin and  $\beta$ III-tubulin expression are associated with aggressive behavior in breast cancer treated with taxane-containing chemotherapy. Furthermore, in the taxane-containing chemotherapy group, Tau expression in patients was significantly associated with worse overall survival rate. Further evaluation of Tau,  $\alpha$ -tubulin, and  $\beta$ III-tubulin may be useful in predicting clinical behavior and seeking therapeutic measures in taxane-based chemotherapy for breast cancer.

### Conflicts of Interest

No potential conflict of interest relevant to this article was reported.

### Acknowledgments

The authors wish to acknowledge the financial support of St. Vincent's Hospital, Research Institute of Medical Science (SVHR-2012-15).

## REFERENCES

- DeSantis C, Siegel R, Bandi P, Jemal A. Breast cancer statistics, 2011. *CA Cancer J Clin* 2011; 61: 409-18.
- Ikedo H, Taira N, Hara F, *et al.* The estrogen receptor influences microtubule-associated protein tau (MAPT) expression and the selective estrogen receptor inhibitor fulvestrant downregulates MAPT and increases the sensitivity to taxane in breast cancer cells. *Breast Cancer Res* 2010; 12: R43.
- Pusztai L. Markers predicting clinical benefit in breast cancer from microtubule-targeting agents. *Ann Oncol* 2007; 18 Suppl 12: xii15-20.
- Wang Y, Sparano JA, Fineberg S, *et al.* High expression of class III beta-tubulin predicts good response to neoadjuvant taxane and doxorubicin/cyclophosphamide-based chemotherapy in estrogen receptor-negative breast cancer. *Clin Breast Cancer* 2013; 13: 103-8.
- Bernard-Marty C, Treilleux I, Dumontet C, *et al.* Microtubule-associated parameters as predictive markers of docetaxel activity in advanced breast cancer patients: results of a pilot study. *Clin Breast Cancer* 2002; 3: 341-5.
- Rouzier R, Rajan R, Wagner P, *et al.* Microtubule-associated protein tau: a marker of paclitaxel sensitivity in breast cancer. *Proc Natl Acad Sci U S A* 2005; 102: 8315-20.
- Andre F, Hatzis C, Anderson K, *et al.* Microtubule-associated protein-tau is a bifunctional predictor of endocrine sensitivity and chemotherapy resistance in estrogen receptor-positive breast cancer. *Clin Cancer Res* 2007; 13: 2061-7.
- McGrogan BT, Gilmartin B, Carney DN, McCann A. Taxanes, microtubules and chemoresistant breast cancer. *Biochim Biophys Acta* 2008; 1785: 96-132.
- Tanaka S, Nohara T, Iwamoto M, *et al.* Tau expression and efficacy of paclitaxel treatment in metastatic breast cancer. *Cancer Chemother Pharmacol* 2009; 64: 341-6.
- Chen X, Wu J, Lu H, Huang O, Shen K. Measuring beta-tubulin III, Bcl-2, and ERCC1 improves pathological complete remission predictive accuracy in breast cancer. *Cancer Sci* 2012; 103: 262-8.
- Li ZH, Xiong QY, Tu JH, *et al.* Tau proteins expressions in advanced breast cancer and its significance in taxane-containing neoadjuvant chemotherapy. *Med Oncol* 2013; 30: 591.
- Elston CW, Ellis IO. Pathological prognostic factors in breast cancer. I. The value of histological grade in breast cancer: experience from a large study with long-term follow-up. *Histopathology* 1991; 19: 403-10.
- Smoter M, Bodnar L, Duchnowska R, Stec R, Grala B, Szczylik C. The role of Tau protein in resistance to paclitaxel. *Cancer Chemother Pharmacol* 2011; 68: 553-7.
- Shao YY, Kuo KT, Hu FC, *et al.* Predictive and prognostic values of tau and ERCC1 in advanced breast cancer patients treated with paclitaxel and cisplatin. *Jpn J Clin Oncol* 2010; 40: 286-93.
- Pentheroudakis G, Kalogeras KT, Wirtz RM, *et al.* Gene expression of estrogen receptor, progesterone receptor and microtubule-associated protein Tau in high-risk early breast cancer: a quest for molecular predictors of treatment benefit in the context of a Hellenic Cooperative Oncology Group trial. *Breast Cancer Res Treat* 2009; 116: 131-43.
- Niu Y, Liu T, Tse GM, *et al.* Increased expression of centrosomal alpha, gamma-tubulin in atypical ductal hyperplasia and carcinoma of the breast. *Cancer Sci* 2009; 100: 580-7.
- Banerjee A. Increased levels of tyrosinated alpha-, beta(III)-, and beta(IV)-tubulin isotypes in paclitaxel-resistant MCF-7 breast cancer cells. *Biochem Biophys Res Commun* 2002; 293: 598-601.
- Yuan SF, Zhu LJ, Zheng WE, *et al.* Expression of beta-tubulin III and survivin in advance stage breast cancer correlates with chemotherapeutic effects of docetaxel. *Asian Pac J Cancer Prev* 2012; 13: 361-5.