



ELSEVIER

Available online at [www.sciencedirect.com](http://www.sciencedirect.com)

SCIENCE @ DIRECT®

Data & Knowledge Engineering 55 (2005) 129–158

DATA &  
KNOWLEDGE  
ENGINEERING

[www.elsevier.com/locate/datak](http://www.elsevier.com/locate/datak)

## Mining of ad-hoc business processes with TeamLog

Schahram Dustdar<sup>a,\*</sup>, Thomas Hoffmann<sup>a</sup>, Wil van der Aalst<sup>b</sup>

<sup>a</sup> *Distributed Systems Group, Vienna University of Technology, Austria*

<sup>b</sup> *Information Systems, Eindhoven University of Technology, Netherlands*

Received 9 November 2004; received in revised form 9 November 2004; accepted 6 February 2005

Available online 10 March 2005

---

### Abstract

The design of workflows is a complicated task. In those cases where the control flow between activities cannot be modeled in advance but simply occurs during enactment time (run time), we speak of *ad-hoc processes*. Ad-hoc processes allow for the flexibility needed in real-life business processes. Since ad-hoc processes are highly dynamic, they represent one of the most difficult challenges, both, technically and conceptually. Caramba is one of the few process-aware collaboration systems allowing for ad-hoc processes. Unlike in classical workflow systems, the users are no longer restricted by the system. Therefore, it is interesting to study the actual way people and organizations work. In this paper, we propose process mining techniques and tools to analyze ad-hoc processes. We introduce process mining, discuss the concept of mining in the context of ad-hoc processes, and demonstrate a concrete application of the concept using Caramba, process mining tools such as EMiT and MinSoN, and a newly developed extraction tool named *Teamlog*.

© 2005 Elsevier B.V. All rights reserved.

**Keywords:** Process mining; Workflow management; Business process management; Business process analysis; TeamLog; Caramba; EMiT; MinSoN

---

\* Corresponding author. Tel.: +43 1 58801 18414; fax: +43 1 58801 18491.

*E-mail addresses:* [dustdar@infosys.tuwien.ac.at](mailto:dustdar@infosys.tuwien.ac.at) (S. Dustdar), [thomas.hoffmann@onemail.at](mailto:thomas.hoffmann@onemail.at) (T. Hoffmann), [w.m.p.v.d.aalst@tm.tue.nl](mailto:w.m.p.v.d.aalst@tm.tue.nl) (W. van der Aalst).

## 1. Introduction

Process management in organizations becomes more and more important. To increase their competitiveness they have to introduce clearly defined processes, and these processes must be improved continuously. Actual work can deviate from process definitions due to many reasons. Therefore, it is important for organizations to discover these differences in order to improve their processes. Process mining allows both (1) the identification of processes from transaction logs and (2) the detection of deviations between the (prescriptive or descriptive) process model and the real world process executions. Ad-hoc processes, a special category of processes, have no underlying process definition. Mining this kind of processes offers important information for the organization's management, which can be used to detect the actual processing behavior and therefore, to improve the organizations performance. For example, ad-hoc processes arise from loosely coupled collaboration between domain-specialists across geographical distances and organizational boundaries. Examples for application domains of ad-hoc processes include, for example, consulting and marketing teams, design teams, small engineering teams, crisis-mitigation teams (e.g., [31]). In most cases the application domain is to be found in SMEs (Small- and Medium-sized enterprises). These organizations often do not model their processes, because that's a time-consuming and expensive task. Furthermore, working with ad-hoc processes allows them to be very flexible, which is a prerequisite for a competitive process performance when working with varying business partners. Caramba [12] is one of the few collaboration systems actually supporting ad-hoc processes. This paper describes mining of ad-hoc processes by means of Caramba, TeamLog and EMiT [11]. Caramba offers a transaction log and TeamLog converts it into a general format. Then EMiT mines the process and creates a process model in form of a Petri net. Additionally, other tools such as MinSoN [4] can mine other aspects such as the organizational context or the social network. Besides the knowledge about how a process works, it is important to understand the relations between the organizations employees, between groups or departments. Based on a social network ("a finite set or sets of actors and the relation or relations defined on them" [30]), social network analysis (SNA) [30] provides appropriate methods to get this kind of information. Because an organization is a social network, SNA, e.g., can be used to find out how much a person communicates with others, or if it has a central role within the organization. This kind of information might be important for an organization's management to initiate some improvements in the organization's competitiveness and provides valuable indicators for defining roles and responsibilities.

Why is all of this relevant? Thus far, information technology has been focusing on two extremes: completely *unstructured processes (ad-hoc) and highly structured (modeled) processes*. On one end of the spectrum we find groupware products that typically aim at supporting unstructured processes, i.e., these systems are completely unaware of the business process at hand. For example, e-mail programs support the exchange of information but are completely ignorant when it comes to the purpose of these information exchanges in context of business processes. If we ignore workflow components such as Domino Workflow, even advanced groupware products such as Lotus Notes, are unaware of processes and therefore, implicitly, assume unstructured processes. On the other end of the spectrum, we find traditional workflow offerings such as Staffware, MQSeries Workflow, etc. These systems definitely are aware of the business process at hand. In fact, they typically force the execution of these processes into structures defined at design time.

Classical workflow technology has problems dealing with flexibility and therefore only supports highly structured processes. In reality, most business processes are in-between these two extremes, i.e., they are *semi-structured*. In semi-structured processes there may be typical patterns in the handling of cases, but for individual instances it is desirable, or even necessary, to deviate from these patterns. One way of dealing with these processes is the *case-handling paradigm* [1], i.e., resort to a more data-driven approach where in addition to the normal workflow, implicitly, alternative routes (e.g., “bypass” and “redo”) are generated. Another way is to let end-user, at run-time, design or modify the process for one or more process instances. This is sometimes referred to as *ad-hoc workflow*, i.e., the process emerges or is modified at run-time by the end-users.

Dealing with ad-hoc processes in an adequate way is important to improve the support of business processes. Technologies aiming at completely *unstructured processes* (e.g., groupware) and highly *structured processes* (e.g., production workflow) have in a way been focusing on the “low hanging fruits”, i.e., processes where it is easy to improve performance with relatively simple measures. Unfortunately, the majority of processes do not fall into one of these extreme categories. Therefore, concepts and tools aiming at ad-hoc business processes are of the utmost importance.

Ad-hoc business processes require more flexibility than traditional “production workflow” type of processes. However, at the same time, there is the need for management information and real insight into the actual processes as they unfold. Unfortunately, there is not a clearly defined process model that can serve as an anchor to gather and present process information. Therefore, we propose the use of *process mining* to analyze the logs of systems supporting ad-hoc processes. In this paper we demonstrate that this is actually possible using the existing ad-hoc collaboration system Caramba and process mining tools such as EMiT. The result is a generic approach for mining ad-hoc business processes and a concrete tool linking Caramba, EMiT, and other process mining tools. To conclude this section, Table 1 contains some important definitions from the domain of (business) processes used in this paper.

Table 1  
Definitions

Term	Explanation
Business process	A set of one or more linked procedures or activities which collectively realize a business objective or policy goal, normally within the context of an organizational structure defining functional roles and relationships [20]
Process instance	The representation of a single enactment of a process [20], also referred to as (work)case
Process definition	The representation of a business process in a form which supports automated manipulation, such as modeling, or enactment by a workflow management system. The process definition consists of a network of activities and their relationships, criteria to indicate the start and termination of the process, and information about the individual activities, such as participants, associated IT applications and data, etc. [20]
(Work)case	In this paper we use it as synonym for process instance
Activity	A description of a piece of work that forms one logical step within a process. [20]
Coordination step	Process of message creation in Caramba. A coordination step has a sender and an addressee (the term addressee will be discussed in Section 5.2). A coordination step causes the generation of activity instances for the sender and for each recipient. In [12] coordination step is referred to as coordination

The remainder of this paper is organized as follows. First, we discuss related work. Section 3 gives an overview of process mining. The common workflow log format used by our approach is covered by Section 4. Caramba and its data model are discussed in Section 5. Furthermore, this section contains an example of an ad-hoc process. The next section presents TeamLog—a format converter of Caramba process information. Section 7 contains an example of process mining with EMiT. Finally, in Section 8 we summarize the main conclusions and give an outlook on our future work.

## 2. Related work

Recently, the topic of process mining has been gaining more attention both in practice and research [5,6]. Gartner identifies *Business Process Analysis* (BPA) as an important aspect of the next generation of BPM products [14]. Note, that BPA covers aspects neglected by many traditional workflow products (e.g., diagnosis, simulation, etc.). *Business Activity Monitoring* (BAM), which can be considered as a synonym to process mining, is named by Gartner as one of the emerging areas in BPA [14]. The goal of BAM tools is to use data logged by the information system to diagnose the operational processes. An example is the ARIS Process Performance Manager (PPM) of IDS Scheer [17]. ARIS PPM extracts information from audit trails (i.e., information logged during the execution of cases) and displays this information in a graphical way (e.g., flow times, bottlenecks, utilization, etc.). Many other vendors offer similar products, e.g., Cognos (NoticeCast), FileNet (Process Analyzer), Hyperion (Business Performance Management Suite), Tibco (BusinessFactor), HP (Business Process Insight), ILOG (Jviews), and webMethods (Optimize/Dashboard). These tools show the practical relevance of process mining. Unfortunately, these tools only focus on measuring performance indicators such as flow time and utilization and do not at all focus on discovering the process and its organizational context. For example, none of the tools mentioned actually discovers causal relations between various events or the underlying social network. Moreover, the focus of these systems is on well-defined processes and they are unable to handle ad-hoc business processes. Note, that for ad-hoc business processes it is not sufficient to look into performance indicators such as flow time and utilization, i.e., it is vital to have insight in the actual processes as they unfold, emerge, and/or change.

Also in academia there is a growing interest in process mining as is illustrated by special issues of journals, workshops, and papers [2,4–8,10,11,15,16,23,24,27,29]. Different papers focus on different perspectives of process mining. The most challenging perspective remains the control-flow perspective. Especially for ad-hoc business processes, there are notorious, but interesting, problems. For example, “How to distinguish noise/exceptions from regular behavior?”, “How to discover duplicate/hidden tasks in a process?”, etc. [23].

This paper focuses on mining ad-hoc business processes. As indicated in the introduction, there are few tools supporting ad-hoc business processes, i.e., semi-structured processes. Most research efforts have been focusing at completely unstructured processes (e.g., groupware) and highly structured processes (e.g., production workflow). The literature on workflow is extensive [3,18,21,22] and within this domain several people have been working on “workflow change” [9,13,25]. However, most of the work is devoted to migrating an instance from one (structured) workflow model to another rather than focusing on truly ad-hoc processes. Caramba is one of the few process-aware collaboration systems that truly supports ad-hoc business processes [12].

### 3. Process mining

The goal of process mining is to extract information about processes from transaction logs [5,7]. We assume that it is possible to record events such that (i) each event refers to an *activity* (i.e., a well-defined step in the process), (ii) each event refers to a (*work*)*case* (i.e., a process instance), (iii) each event can have a performer also referred to as *originator* (the person executing or initiating the activity), and (iv) events have a *timestamp* and are totally ordered. Table 2 shows an example of a log involving 11 events, 9 activities, and 4 performers. In addition to the information shown in this table, some event logs contain more information on the case itself, i.e., data elements referring to properties of the case.

Event logs such as the one shown in Table 2 are used as the starting point for mining. We distinguish three different perspectives: (1) the process perspective, (2) the organizational perspective, and (3) the case perspective. The *process perspective* focuses on the control-flow, i.e., the ordering of activities. The goal of mining this perspective is to find a good characterization of all possible paths, e.g., expressed in terms of a Petri net [26] or Event-driven Process Chain (EPC) [17,19]. The *organizational perspective* focuses on the performer, i.e., which performers are involved and how are they related. The goal is to either structure the organization by classifying people in terms of roles and organizational units or to show relation between individual performers (i.e., build a social network [28]). The *case perspective* focuses on properties of cases. Cases can be characterized by their path in the process or by the persons working on a case. However, cases can also be characterized by the values of the corresponding data elements. For example, if a case represents a replenishment order it is interesting to know the supplier or the number of products ordered.

The process perspective is concerned with the “How?” question, the organizational perspective is concerned with the “Who?” question, and the case perspective is concerned with the “What?” question. To illustrate the first two consider Fig. 1. The log shown in Table 2 contains information about two cases (i.e., process instances). The log shows that for both cases the activities A and B have been executed. The activities C, D, E, F and G are only performed in case 1, H and I only in case 2. Each case starts with the execution of A and B. Based on the information shown in Table 2 and by making some assumptions about the completeness of the log (i.e., assuming that the cases

Table 2  
An event log

Case id	Activity id	Performer	Timestamp
Case 1	Activity A	Marta	9-2-2004:12.14.01
Case 1	Activity B	Monika	9-2-2004:16.02.29
Case 1	Activity C	Monika	10-2-2004:11.02.11
Case 1	Activity D	Peter	10-2-2004:12.24.18
Case 1	Activity E	Fritz	10-2-2004:14.05.22
Case 1	Activity F	Monika	11-2-2004:09.07.17
Case 1	Activity G	Monika	11-2-2004:10.08.30
Case 2	Activity A	Marta	13-2-2004:11.14.24
Case 2	Activity B	Peter	14-2-2004:08.13.01
Case 2	Activity H	Marta	14-2-2004:14.50.21
Case 2	Activity I	Peter	16-2-2004:12.05.30

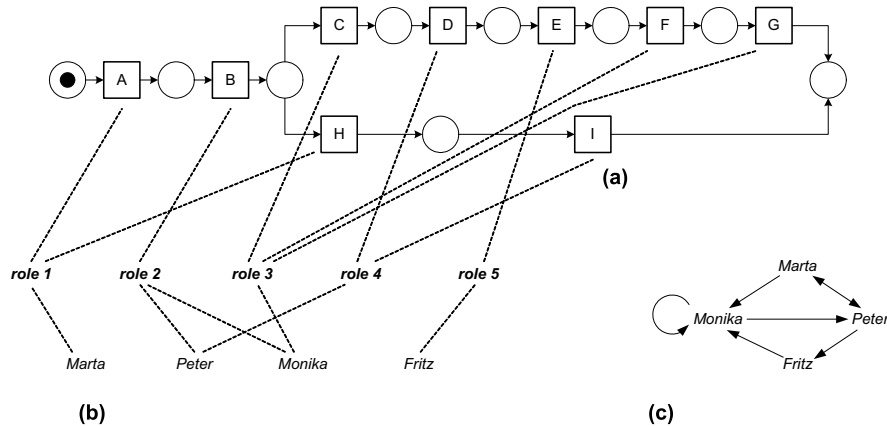


Fig. 1. Some mining results for the process perspective (a) and organizational (b and c) perspective based on the event log shown in Table 2. (a) The control flow structure expressed in terms of a Petri net. (b) The organizational structure expressed in terms of a activity-role-performer diagram. (c) A sociogram based on transfer of work.

are representative and a sufficient large subset of possible behaviors is observed), we can deduce the process model shown in Fig. 1(a). The model is represented in terms of a Petri net [26]. The Petri net starts with activity A and finishes either with activity G or with activity I. The activities are represented by transitions. After executing B there is a choice between either executing C or H. In this example there is no parallel processing, but if a process contains parallel routes, detecting this parallelism would be a challenging mining task. Logging start- and end events would form a good base for this parallelism detection. The number of events in Table 2 is too small to establish our assumptions accurately. However, for the sake of argument we assume that the things that did not happen will never happen. Note that there may be many models that generate the log shown in Table 2. The goal of process mining is to find the most likely one, cf. Occam's Razor.

Fig. 1(a) does not show any information about the organization, i.e., it does not use any information on the people executing activities. However, Table 2 shows information about the performers. For example, we can deduce that activity B is executed by either Peter or Monika, and that all other activities are executed by a single specified person. We could indicate this information in Fig. 1(a). The information could also be used to “guess” or “discover” organizational structures. A guess could be that there are five roles (Fig. 1(b)). For example, for the execution of A role 1 is required and only Marta has this role, for the execution of B role 2 is required and Peter and Monika have this role. For two cases these choices may seem arbitrary but for larger data sets such inferences capture the dominant roles in an organization. The resulting “activity-role-performer diagram” is shown in Fig. 1(b). The five “discovered” roles link activities to performers. Fig. 1(c) shows another view on the organization based on the transfer of work from one individual to another, i.e., not focus on the relation between the process and individuals but on relations among individuals (or groups of individuals). The event log can be used to derive relations between performers of activities, thus resulting in a sociogram. For example, it is possible to generate a sociogram based on the transfers of work from one individual to another as is shown in Fig. 1(c). Each node represents one of the four performers and each arc represents that there has been a transfer of work from one individual to another. For example, Fig. 1(c) shows

that Peter transfers work to Fritz, but not vice versa. This sociogram does not show frequencies. However, for analysis proposes these frequencies can be added. Monika is the only person transferring work to herself.

Besides the “How?” and “Who?” question (i.e., the process and organization perspectives), there is the case perspective that is concerned with the “What?” question. Fig. 1 does not address this. In fact, focusing on the case perspective is most interesting when also data elements are logged but these are not listed in Table 2. The case perspective looks at the case as a whole and tries to establish relations between the various properties of a case. Note, that some of the properties may refer to the activities being executed, the performers working on the case, and the values of various data elements linked to the case. Using clustering algorithms it would for example be possible to show a positive correlation between the size of an order or its handling time and the involvement of specific people.

Orthogonal to the three perspectives (process, organization, and case), the result of a mining effort may refer to *logical* issues and/or *performance* issues. For example, process mining can focus on the logical structure of the process model (e.g., the Petri net shown in Fig. 1(a)) or on performance issues such as flow time. For mining the organizational perspectives, the emphasis can be on the roles or the social network (cf. Fig. 1(b) and (c)) or on the utilization of performers or execution frequencies. This example process (Fig. 1, Table 2) is further used in the remainder of this section, but then we will use real activity names instead of A, B etc.

To address the three perspectives and the logical and performance issues we have developed a set of tools including EMiT [2,11], Thumb [29], MinSoN [4], and the ProM tool.<sup>1</sup> All these tools share a common XML format, as described in the next section.<sup>2</sup> Through this format we will try to mine ad-hoc processes based on the logs in systems such as Caramba. In our case study we will focus on mining the control flow perspective (Fig. 10), and on visualizing social networks (Fig. 11). The data required for both perspectives is readily available in Caramba.

The remainder of the paper discusses an example of mining an ad-hoc process being instantiated using Caramba. There is no a priori knowledge required about the organizational structure being investigated or the process constituents, such as activities.

#### 4. Workflow logs

Many process-aware collaboration systems store information in application-specific formats. Thus a general format would simplify process analysis with common tools like EMiT [2,11]. Ref. [11] gives a definition of a general XML workflow log format. This section contains a simple ad-hoc process and its general XML description to show how a workflow log looks like. The general formats DTD is discussed in Section 6.4. We assume that the example-ad-hoc-process (Fig. 2) belongs to the real world process “plan IT-installation for offices (banks)”. The numbering in Fig. 2 indicates the temporal order.

Two persons collaborate (work together) in this process (Table 3).

<sup>1</sup> These tools can be downloaded from [www.processmining.org](http://www.processmining.org).

<sup>2</sup> The ProM tool uses an extension of the format supported by EMiT and MinSoN.

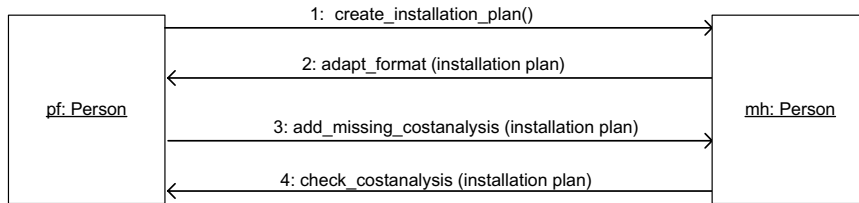


Fig. 2. A simple ad-hoc process.

Customer Trust Bank sends a request for an IT-installation plan of a new office to *pf*. *pf* instructs *mh* to create the requested plan (Fig. 2, collaboration 1). When *mh* completes the plan she sends this document back to *pf* and asks him to verify/change the document formatting (collaboration 2). After *pf* has received the installation plan, he notices that the cost analysis is missing. So he tells *mh* to add the missing details (collaboration 3). *mh* adds the cost analysis and returns the plan to *pf*, who has to check the updated plan (collaboration 4). The code below describes this simple ad-hoc-process using the general workflow log format.

```

<Workflow_log>
  <source program="other"/>
  <process description="none" id="process_1">
    <case description="New office (Trust Bank)" id="id_1">
      <log_line>
        <task_name>Create installation plan</task_name>
        <event kind="complete"/>
        <date>13-02-2004</date>
        <time>11:14:24</time>
        <originator>Huchen Marta </originator>
      </log_line>
      <log_line>
        <task_name>Adapt the format of the installation
plan</task_name>
        <event kind="complete"/>
        <date>14-02-2004</date>
        <time>08:13:01</time>
        <originator>Fogosch Peter </originator>
      </log_line>
      <log_line>
        <task_name>Add missing cost analysis</task_name>
        <event kind="complete"/>
        <date>14-02-2004</date>
        <time>14:50:21</time>
        <originator>Huchen Marta </originator>
      </log_line>
      <log_line>
        <task_name>Check cost analysis</task_name>
        <event kind="complete"/>
        <date>16-02-2004</date>
        <time>12:05:30</time>
        <originator>Fogosch Peter </originator>
      </log_line>
    </case>
  </process>
</Workflow_log>
  
```



Table 3  
Involved persons in the ad-hoc process

Abbreviation	Full name	Department
<i>mh</i>	Marta Huchen	Consulting
<i>pf</i>	Peter Fogosch	Sales department

This application-independent process description facilitates further process analysis and can be applied to ad-hoc business processes. The remainder of this paper demonstrates this by mining ad-hoc processes supported by a concrete collaboration system: Caramba [12].

## 5. Caramba

This section presents Caramba by discussing relevant parts of its architecture and a concrete scenario.

### 5.1. Overview

Caramba is a process-aware collaboration system, which helps people to collaborate across geographical distances and organizational boundaries. One could say that it is a hybrid between a workflow and a groupware system. It was implemented to improve the effectiveness of collaboration in virtual teams [12]. A virtual team is composed of a set of partners (“real organizations”), distributed in time and in space, sharing resources and competencies, and cooperating to reach some shared objectives using information technologies. Those resources and competencies (different specialists) work together to fulfill a goal. [12] lists special properties of virtual teams:

- team members require status information on all work activities (process-awareness),
- team members are frequently imbedded in different organizations and they have to collaborate across multiple business processes, time zones and locations,
- virtual teams work on highly dynamic ad-hoc processes which require interaction of many domain experts,
- members of virtual teams jointly work on artifacts (documents, databases, etc.),
- team members require knowledge about the multiple relationships between artifacts and the context in which they were created, shared or distributed (e.g., who, what, when, in which context),
- team leaders of virtual teams need on-demand access on the projects status and artifacts and on critical communication (team-internal or between team members and customers).

Caramba offers support for predefined and ad-hoc processes. Predefined processes are modeled at design time, whereas ad-hoc processes result from runtime-collaboration between the involved persons. Therefore, ad-hoc processes do not have an a priori known process definition.

Combining workflow and groupware metaphors and primitives—as Caramba does—is not trivial. To our knowledge very few approaches exist today, which support highly dynamic processes such as in virtual teams or task forces (e.g., [31]). Well known, successful academic research has been undertaken in the area of adaptive workflow and research prototypes have been developed (e.g., [32]). Adaptive workflow approaches allow for the dynamic modification of instantiated processes. Our approach is fundamentally different compared to approaches presented by many commercial WfMS and adaptive workflow systems, since our experience (grounded in many industrial case studies) is that most virtual teams begin to work on processes without modeling them in advance. The mechanisms adaptive workflow research prototypes such as Chautauqua [32] and ADEPTflex [25] build on is that single workflow instances can be adapted in *exceptional* cases. However, as far as virtual teamwork is concerned our industrial case studies (e.g., [12]) show that “exceptions are the rule”. Our goal is to provide a supporting environment (not automatism) to solve “exceptions”. Therefore, process remodeling or instance change propagation are not the preferred way of supporting virtual team members, who work in a loosely-coupled style and most of the time have no support from process modeling specialists. Hence, Caramba currently does not provide automatism if deviations from a modeled process occur and arrive at “inconsistencies” (compared to the modeled process) of the work case. The trail of all activities (control flow and data flow) is visible to team members and coordination primitives are provided to solve underlying problems in work activities.

#### 5.1.1. Data model

To be able to describe the functionality and further technical TeamLog issues in the next sections, it is necessary to explain some basics about the Caramba data model. Caramba stores its data in a relational database that manages the Caramba objects. Although the database contains many tables, this section focuses only on CARAMBA\_AI, which holds the activity instance information required by TeamLog. Fig. 3 lists the TeamLog-relevant attributes of CARAMBA\_AI.

We use the term “record” as a synonym for an entry in table CARAMBA\_AI. *ID* is a unique number, which serves as a records primary key. The attribute *NAME* contains the task descrip-

CARAMBA_AI
ID
NAME
AI_TYPE
AI_STATE
SENDER_DENORM
ADDRESSEE_DENORM
RECIPIENT_DENORM
BEGIN_SCHEDULED
END_SCHEDULED
BEGIN_ACTUAL
END_ACTUAL
STARTED
STOPPED
WC_ID
WC_SUBJECT

Fig. 3. Table CARAMBA\_AI: TeamLog-relevant attributes.

tion (e.g., “Verify installation plan”). Caramba distinguishes between different record types (*AI\_TYPE*). A “W”-record (workcase) indicates the creation of a new workcase. Caramba adds a “C”-record for each activity instance sent to a recipient. Additionally to that, Caramba inserts an “S”-record (source) for each message sent to an addressee, i.e., for every “S”-record there are one or more “C”-records. A small example can be given as follows. Assume that person A would instruct another person B to order new hardware. In Caramba, person A would initiate a coordination step, defining B as addressee. The result is a new activity instance, “order hardware” in person B’s worklist (a “C”-record is created). Additionally, the activity instance is shown in the Person as “sent to” folder (“S”-record in Caramba’s database). The example in Section 5.2 offers details about the notion of addressees and shows when Caramba creates the different kinds of records. *AI\_STATE* holds the record-status: “N” marks an activity instance as new, “R” indicates an activity instance which was already read and “D” (done) means that an activity instance is completed. Caramba supports further record states which are not relevant for the purpose of this paper. *SENDER\_DENORM* is used to store the name of the initiator of a coordination step, *ADDRESSEE\_DENORM* holds the name of the addressee and *RECIPIENT\_DENORM* contains the name of the activity instances recipient. Table *CARAMBA\_AI* stores different kinds of timestamp information. *BEGIN\_SCHEDULED* and *END\_SCHEDULED* denote an activity instances scheduled start and end time. On the other hand *BEGIN\_ACTUAL* and *END\_ACTUAL* hold the actual begin and end timestamps. *STARTED* is used to store the creation time of the record, *STOPPED* is set whenever the status (*AI\_STATE*) changes to “D”. In contrast to *STARTED* and *STOPPED* which are automatically created by Caramba, the schedule and actual time intervals are under the users control. If a record is an activity instance (*AI\_TYPE* is “C”) then *WC\_ID* contains the primary key of the corresponding “W”-record. *WC\_SUBJECT* holds the appropriate workcase description.

### 5.2. Example: ad-hoc process in Caramba

To illustrate the principle of ad-hoc processes in Caramba we consider the collaboration diagram shown in Fig. 4. This section extends the example from Section 4 with another workcase (a second process instance of the same real world process). Another bank (Simpson Bank) requests an installation plan for a new office. In addition to the control flow, Fig. 4 contains information about the generated database records in table *CARAMBA\_AI*.

Several persons collaborate during process execution (Table 4). In this case, customer Simpson Bank sends the request for an IT-installation plan of a new office to *ml*. *ml* instantiates the process “New office (Simpson Bank)” by performing a coordination step that leads to an activity instance in *mh*’s worklist (Fig. 4, collaboration 1). When *mh* completes the plan she sends this document back to *ml* and asks her to verify/change the document formatting (collaboration 2). After *ml* has revised the formatting she wants the plan to be verified by the members of the sales department. In contrast to the ad-hoc process in Section 4, *ml* might think that verification by multiple people makes sense, because the project costs are much higher. Hence, *ml* instructs Caramba (collaboration 3) to send activity instances to the appropriate persons (3a and 3b). Because *ml* also belongs to the sales department normally she would receive an activity instance too. To simplify the example, this activity instance from *ml* to *ml* is ignored in Fig. 4. Later on, when *pf* and *fz* have verified the installation plan, they return their correction notes to *ml* (collaboration 4 and 5).

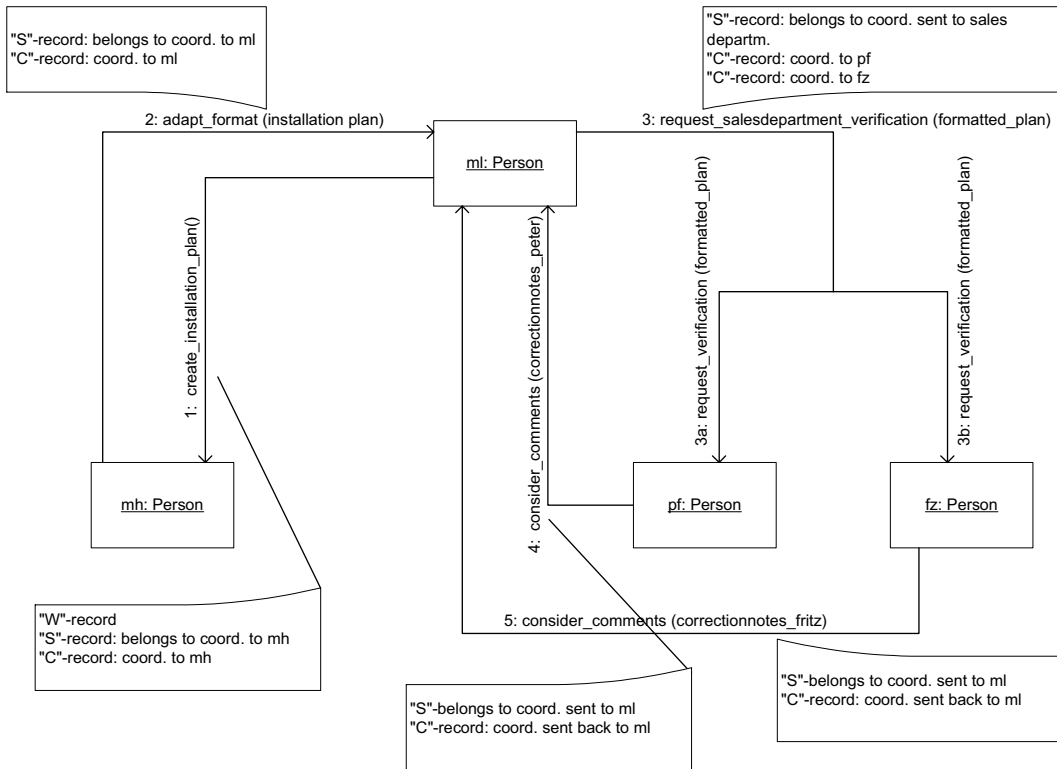


Fig. 4. Ad-hoc process: collaboration diagram.

Table 4  
Involved persons in ad-hoc process

Abbreviation	Full name	Department
<i>ml</i>	Monika Lachs	Sales department
<i>mh</i>	Marta Huchen	Consulting
<i>pf</i>	Peter Fogosch	Sales department
<i>fz</i>	Fritz Zander	Sales department

How does Caramba process a coordination step to a group, such as collaboration 3 in Fig. 4? The coordination model of Caramba distinguishes between recipients and addressees. An addressee is a higher level construct (abstraction) and can be an “Organizational Object” such as role, skill, group etc. (see [12] for more details on this). It maps addressees to one or multiple recipients. If the user chooses a group as addressee (e.g., the group sales department), Caramba determines the group members and sends an activity instance to each of them. Caramba offers further possibilities [12]: other objects than groups can serve as addressees and it is possible to control a coordination steps distribution type (e.g., all members of a group, a random member of a group, etc.).

TeamLog reads the database records shown in Fig. 4 to create an XML workflow log. The next section discusses more technical TeamLog issues to offer knowledge about how TeamLog works in principle and how it maps Caramba database information into the XML log.

## 6. TeamLog

This section presents the main contribution of the paper: a tool that can take logs from a process-aware collaboration system like Caramba and extract the information relevant for process mining.

### 6.1. Motivation and goals

Normally, in current enterprise systems process information is distributed over several “log databases” (e.g., files, relational databases etc.). To support easier processing of this data, it is convenient to collect the relevant process information from the different logs and summarize it in one XML workflow log. TeamLog is a tool which offers appropriate functionality for ad-hoc process information. Furthermore, TeamLog supports anonymous task names in the XML workflow log, because that is convenient for general process analysis. Currently, there are already some tools that support visualization of processes on the basis of workflow logs (e.g., EMiT [11], Thumb [29]). In this paper we will use TeamLog to read process information out of the Caramba database in order to generate XML input for EMiT (Enhanced Mining Tool). In contrast to visualization, at the moment there is only limited tool-support for analysis and interpretation of ad-hoc processes. Although TeamLog is applied to Caramba in this paper, TeamLog itself is a general applicable logging tool which can be adapted to the respective data model.

Fig. 5 provides an overview of the approach. It shows the transition from relational ad-hoc process information in CARAMBA to EMiT's output: a Petri-net of the reconstructed workflow.

### 6.2. Technical overview of TeamLog

TeamLog is a portable standalone application written in Java. To get the required data, TeamLog accesses Caramba's database directly via JDBC<sup>3</sup> loading the communication settings from its property file. The information read from table CARAMBA\_AI is filtered, converted, and written to an XML-file in the file system.

Three packages organize the applications components (Fig. 6). *TeamLog.general* contains classes/interfaces for general purposes (constants, the applications startup class etc.), *TeamLog.ui* holds all classes which implement the user interface, and *TeamLog.logic* includes business logic and external interface components. To separate independent subtasks, TeamLog.logic comprises six components, each of it contributing to TeamLog's goal: generating an XML workflow log from Caramba's process information. The *action controller* serves as interface component to separate the user interface implementation from business logic tasks. The *DOM builder* reads information from the database table CARAMBA\_AI and creates an XML representation of the requested workflow log. Because the application generates XML output, validation is straightforward, implemented in

<sup>3</sup> See JDBC Technology Overview, <http://java.sun.com/products/jdbc/>.

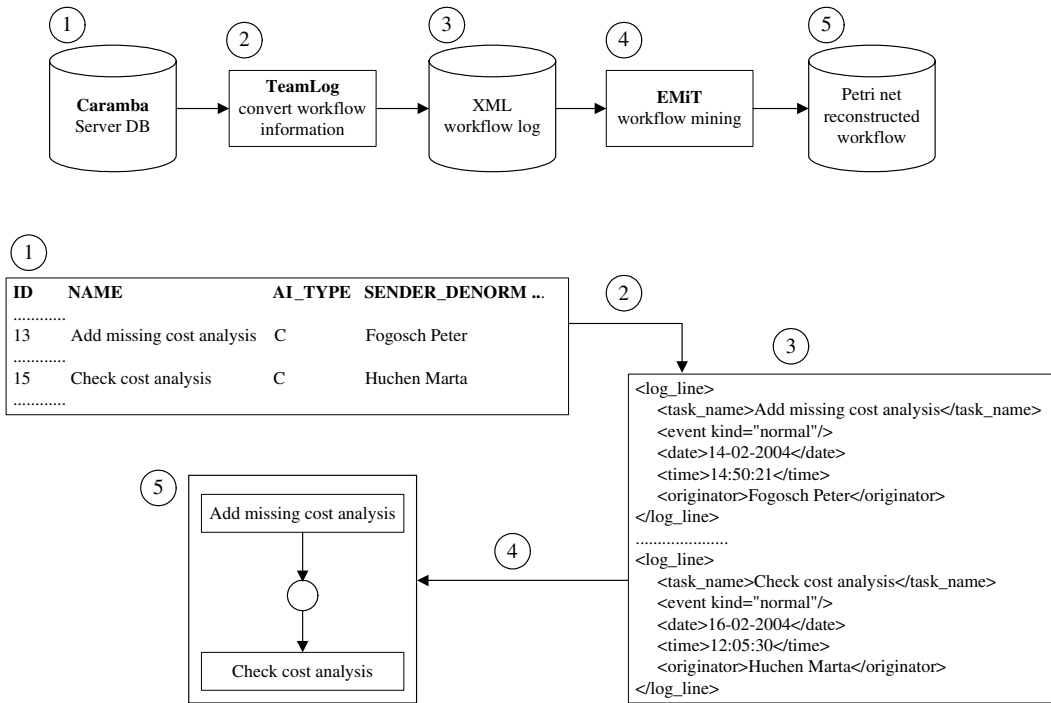


Fig. 5. From Caramba database information to the reconstructed workflow.

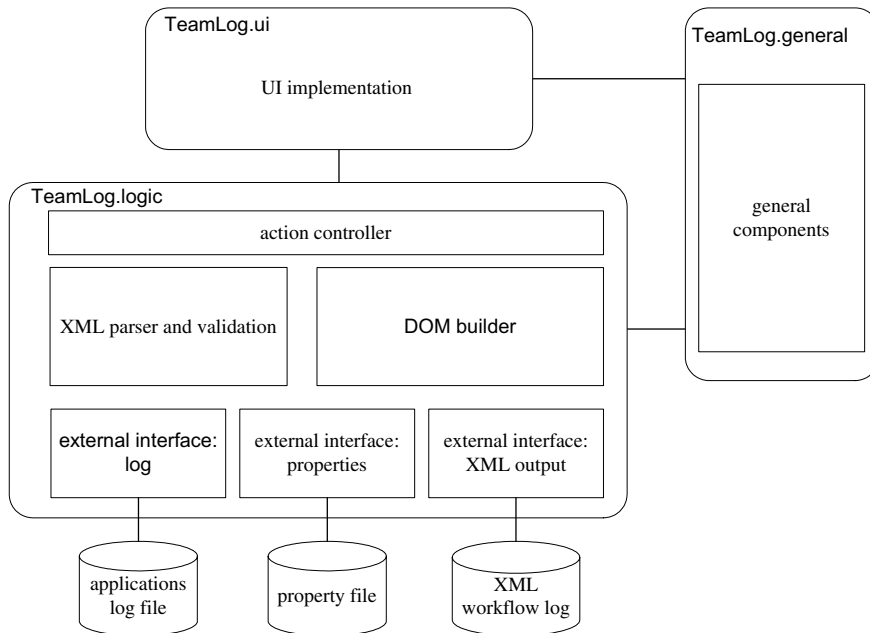


Fig. 6. Overview of TeamLog's components.

component “*XML parser and validation*”. After validation, the workflow log is written to the file system, using the appropriate external interface. Additionally, TeamLog.logic contains components to access the applications property- and logfile.

### 6.3. Security

TeamLog does not require authentication to start the application, because security issues are not considered as a major goal of TeamLog’s implementation. The major goal of TeamLog is to convert Caramba process information to XML. But although TeamLog does not require authentication, accessing the Caramba database via JDBC does. Therefore, TeamLog provides functionality which enables the user to modify this access-information (connection string, database user and the corresponding password), which is stored as plain text in TeamLog’s property file.

### 6.4. Output

A major goal of this section is to describe TeamLog’s mapping of Caramba information to the XML workflow log. TeamLog’s current version supports two log formats: the format defined in the DTD ([Appendix A](#)), and another format that is used in the ProM framework (more information in Section 8), containing nearly the same information but with different XML grammar. If element names are used in the remainder of this paper, they refer to the original DTD format.

TeamLog distinguishes between different timestamps, that determine the source of <date> and <time>, the outputs timestamp-elements ([Table 5](#)). TeamLog creates one logline for each activity instance. Additionally, it generates two loglines automatically for each case: a creation logline at the beginning, and a termination logline at the end. In addition to loglines originating from Caramba’s database, [Table 5](#) explains which timestamp information is used for the automatically created loglines.

The timestamp is under the users control (selection in user interface). The timestamps meanings are:

**STARTED:** The workflow log describes the real process flow. The timestamp of each activity instance shows when it was initiated in Caramba. Caramba generates this timestamp automatically and, therefore, it is not under the user’s control.

**STOPPED:** The timestamp of an activity instance indicates when its status was set to “done”. If an activity instance is marked as “done”, Caramba automatically sets the STOPPED timestamp.

**BEGIN\_ACTUAL:** Caramba provides functionality to enter the actual begin time which is used as timestamp in the generated workflow log. It indicates the activity instances start time from the users point of view. The main difference between **STARTED** and **BEGIN\_ACTUAL** is, that the timestamp **BEGIN\_ACTUAL** is under the users control.

**END\_ACTUAL:** Caramba enables the user to enter the actual end time of an activity instance. Like **BEGIN\_ACTUAL**, this timestamp is under the user’s control. It is the time when the activity instances are completed from the user’s point of view.

**BEGIN\_SCHEDULED:** This time information is also under the user’s control. The timestamps in the workflow log indicate the planned start times.

Table 5  
Workflow log timestamps

Timestamp	Type of logline	Attribute in table CARAMBA_AI
<u>STARTED</u>	Logline for an activity instance	STARTED
	Creation logline	STARTED
	Termination logline	Latest STARTED information of all activity instances within the workcase
<u>STOPPED</u>	Logline for an activity instance	STOPPED
	Creation logline	STARTED
	Termination logline	Latest STOPPED information of all activity instances within the workcase
<u>BEGIN_ACTUAL</u>	Logline for an activity instance	BEGIN_ACTUAL
	Creation logline	STARTED
	Termination logline	Latest BEGIN_ACTUAL information of all activity instances within the workcase
<u>END_ACTUAL</u>	Logline for an activity instance	END_ACTUAL
	Creation logline	STARTED
	Termination logline	Latest END_ACTUAL information of all activity instances within the workcase
<u>BEGIN_SCHEDULED</u>	Logline for an activity instance	BEGIN_SCHEDULED
	Creation logline	STARTED
	Termination logline	Latest BEGIN_SCHEDULED information of all activity instances within the workcase
<u>END_SCHEDULED</u>	Logline for an activity instance	END_SCHEDULED
	Creation logline	STARTED
	Termination logline	Latest END_SCHEDULED information of all activity instances within the workcase

*END\_SCHEDULED*: Corresponds to *BEGIN\_SCHEDULED*. The user enters the planned end time in Caramba. This information is then used as timestamp in the generated workflow log.

The comments in the DTD [11], listed in the appendix, describe how TeamLog maps Caramba database information to workflow log information. The user can influence the <task\_name>-elements contents. If he requests anonymous task names, TeamLog automatically replaces the real task names with “T1”, “T2”, “T3”, etc. Anonymous task names might be required for outsourced process analysis where the actual task names are not relevant. Otherwise CARAMBA\_AI’s NAME-attribute is used. Unique task names are suggested in [5]. Therefore, if a task name appears more than once within a workcase (<case>-element), a number is appended automatically. The number is reset to 1 at the beginning of each workcase.

As an example, managing same names in a case is accomplished as follows. Assume that the task “create design-document” appears three times within a case. The first task name does not change, the second will be “create design-document\_1” and the third will be “create design-document\_2”. If another task, e.g., “analyze design-document”, appears twice, the task name of the second appearance is changed to “analyze design-document\_3”.



#### 6.4.1. Limitations and assumptions

TeamLog's goal is to generate workflow logs describing Caramba ad-hoc processes. Per definition, ad-hoc processes do not have a priori known process definitions.

A workflow log usually contains information about multiple process instances (workcases), that means information about multiple executions of the same real world process. Because for ad-hoc processes it cannot be determined automatically to which real world process they belong, TeamLog makes the following assumption.

All workcases in table CARAMBA\_AI within a Caramba workspace belong to the same real world process. This assumption is required, because in the current version of Caramba there is no information about the real world process to which an ad-hoc process belongs. This will be part of the next Caramba release. Each Caramba workspace has its own database and therefore, it has its own table CARAMBA\_AI. This assumption leads to exactly one <process>-element in the generated workflow log because all workcases belong to the same real world process. Caramba does not store event information. For each activity instance there is only one “C”-record in CARAMBA\_AI. If the activity instances status is changed, this record is updated and therefore information about the history of state-changes is not available. That is the reason why the <event>-elements kind-attribute has the constant value “complete”. There are other possible values for this attribute, like “scheduled”, “active”, “withdrawn” etc. [11]. But this only makes sense if event information is available, which is not the case in Caramba.

The workflow logs timestamp information (<date>- and <time>-elements) depends on the selected timestamp. Some workflow log timestamps require timestamp information which is under the users control. If the user does not enter the information in Caramba the corresponding output fields (<date>- and <time>-element) will have no value.

During process mining all cases (<case>-elements) are used to reconstruct a process-definition. Therefore the task names in different cases, which belong to the same task in real world, must be equal. Because the content of the element <task\_name> is entered by the CARAMBA-user, that is in his responsibility. If the user does not take care, useful process mining is not possible.

#### 6.4.2. Social network analysis (SNA)

In the workflow log listed in Section 4 the only possibility for social network analysis is the use of the <originator>-element. If the checkbox “Caramba causality” in TeamLog's user interface (Fig. 7) is not checked, this element contains the activity instances performer. To enable more sophisticated SNA and to provide mining tools with additional information to achieve better results, TeamLog is able to consider Caramba's explicit causality information, i.e., for each activity instance Caramba stores the sender as well as the recipient. The former instructs the latter to do something, i.e., in Caramba the recipient is an activity instance performer. If the user requests Caramba causality information, the <originator> element contains the sender (i.e., the “instructor”, SENDER\_DENORM in table CARAMBA\_AI), the optional <recipient>-element contains the performer (RECEIPIENT\_DENORM), and the optional <role>-element contains the role which serves as addressee in Caramba (e.g., “sales department”, if a coordination step is performed by sending activity instances to the members of the group “sales department”, ADDRESSEE\_DENORM). If the addressee is a group, ADDRESSEE\_DENORM contains the group name (e.g., “sales department”). But if the addressee is a specific person, ADDRESSEE\_DENORM contains

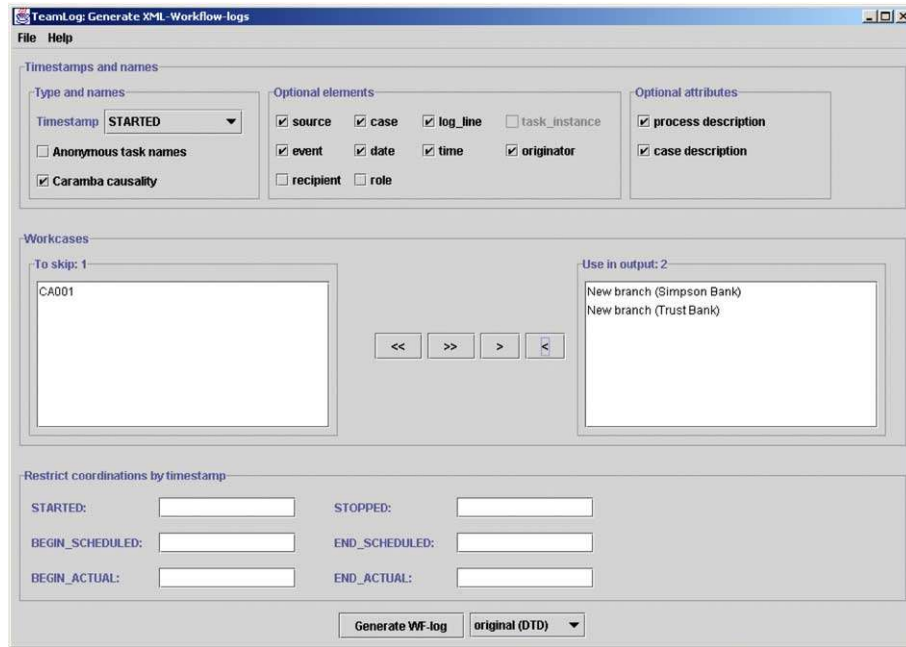


Fig. 7. Main screen of TeamLog.

the name of the person. That has to be taken into account during social network analysis. It is up to the user if these additional elements are part of the workflow log (user interface).

#### 6.4.3. Sorting and filtering

TeamLog's output contains data about workcases and their activity instances. The user chooses those workcases that shall be part of the output. Furthermore, it is possible to restrict the activity instances which shall be taken into account. Therefore, the user has the possibility to enter timestamp-ranges. Further information concerning timestamps and their meaning can be found in Section 6.5.

Additionally to this filters the user can choose the elements and attributes that shall be part of the workflow log (for each optional element or attribute there is a corresponding checkbox in the user interface). The workcase-order in the workflow log is always based on CARAMBA\_AI.STARTED (ascending). Within a workcase, the activity instances are sorted by timestamp. Which timestamp information is used depends on the timestamp selected in the user interface.

#### 6.4.4. Validation

To avoid/detect application- or data-errors, the generated output has to be validated. If the validation routine uses a DTD or the ProM schema depends on the requested log format (Fig. 7). If errors occur during validation, TeamLog informs the user. In case of the DTD log format, TeamLog supports validation against two different DTDs: a standard DTD [11], and an alternative DTD (in case of requested Caramba causality information), which contains additional elements (<recipient>, <role>) to allow more flexible social network analysis. If the user selects neither the recipient- nor the role-element, the generated workflow log is validated against the standard DTD, otherwise

against the alternative DTD. But there is one exception: if the appropriate DTD file path is not set in TeamLog's property file, validation is skipped. If the user requests a workflow log in ProM format and the appropriate schema path is set in the properties, this schema is used for validation.

### 6.5. Using TeamLog

TeamLog is launched when *TeamLog.start*'s main-method is called. During TeamLog's start procedure it reads the connection information used for JDBC access. Then it reads the distinct workcase descriptions from table CARAMBA\_AI and copies them into the appropriate user interface components (screen descriptions in the remainder of this section) where the user can select the workcases. If the connection information is not available in the property file or the database connection can't be established an error message appears.

TeamLog's property-file contains seven persistent settings. The *database connection string*, the *database user* and the corresponding *password* are used to access Caramba's data. The setting *Workflow-Log-Filepath* holds the path of the XML workflow log that TeamLog generates. The remaining settings are *Workflow-Log-DTD*, *Workflow-Log-DTD-alternative*, and the ProM schema path which holds the locations of document type definitions and a schema (used for validation). The remainder of this section shows TeamLog's user-interface and functions.

The user can choose the timestamp, request anonymous task names, indicate the need for Caramba's causality information, and select the optional elements/attributes that shall be part of the output. The format of the log can be set with a combo box close to the button "Generate WF-log".

In addition to that he is able to select the workcases that shall be considered and he can restrict the activity instances within the workcase. The activity instances can be restricted by timestamp (input format "dd.mm.yyyy hh:MM:ss") according to the following rules:

*STARTED*: the activity instances *STARTED* timestamp must be newer than the input (or equal).

*STOPPED*: the activity instances *STOPPED* timestamp must be older than the input (or equal).

*BEGIN\_SCHEDULED*: the activity instances *BEGIN\_SCHEDULED* timestamp must be newer than the input (or equal).

*END\_SCHEDULED*: the activity instances *END\_SCHEDULED* timestamp must be older than the input (or equal).

*BEGIN\_ACTUAL*: the activity instances *BEGIN\_ACTUAL* timestamp must be newer than the input (or equal).

*END\_ACTUAL*: the activity instances *END\_ACTUAL* timestamp must be older than the input (or equal).

These inputs can be combined freely.

Fig. 8 shows the dialog that offers possibilities to change the contents of TeamLog's property file.

### 6.6. Workflow log generation

To describe the process of workflow log generation by means of a sequence diagram, we give some information about TeamLog's classes, in addition to the high-level overview presented in

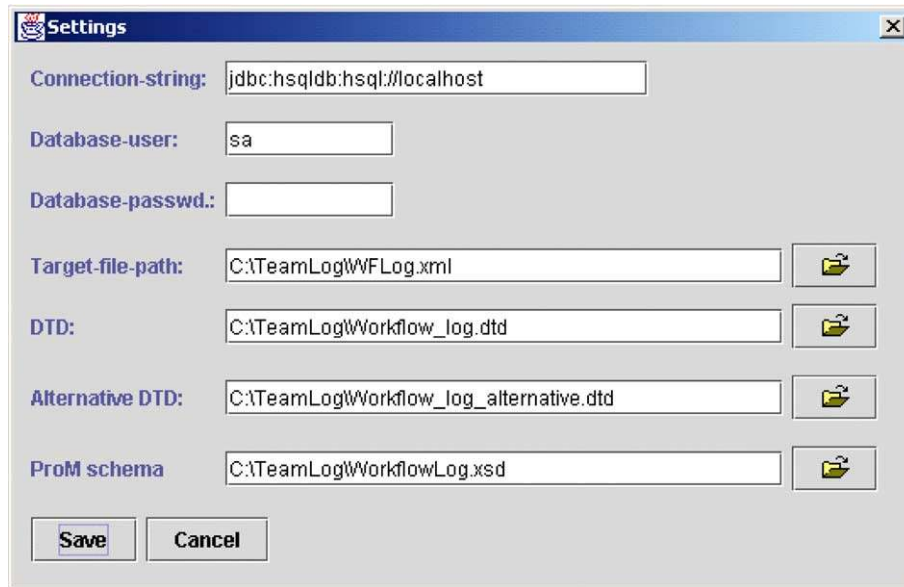


Fig. 8. TeamLog—changing the contents of TeamLog’s property file.

Fig. 6. The class *CUMainFrame* implements the major part of TeamLog’s user interface, *CLActions* serves as action controller (Fig. 6), and *CLWFLogGenerator* and *CLWFDOMCreator* are classes within the DOM builder (Fig. 6). *CLXMLWriter* represents the external interface to write an XML workflow log to the file system. *ContentDefinition*, a class in the package *TeamLog.general*, describes the expected content of the workflow-log, i.e., it contains information about the request. Finally, *CLValidator* is part of the “XML parser and validation” component (Fig. 6).

There is one method that controls the workflow log generation, *CLActions.generate\_WFLog*. Fig. 9 describes the most important steps of this method. To reduce complexity we omitted some details. After the user-interface component *CUMainFrame* has created an instance of *CLActions*, it sets up a *ContentDefinition*-object, which holds information about the request (e.g., which optional attributes shall be part of the output or which workcases have to be read from table *CARAMBA\_AI*). Then this *ContentDefinition* is passed to *CLActions.generate\_WFLog*. Furthermore, *generate\_WFLog* uses the business logic classes *CLWFLogGenerator* and *CLWFDOMCreator* to get a DOM representation of the requested XML workflow log. Finally, the log is written to a file (*CLXMLWriter*) and it is validated against the appropriate DTD (*CLValidator*). If validation fails, an error message appears.

The remainder of this paper provides an example of mining an ad-hoc process.

## 7. Mining of ad-hoc processes

To illustrate the concept of process mining using real Caramba logs, we consider the process (“plan IT-installation for offices (banks)”) described in Section 5.2. Our focus is the control flow

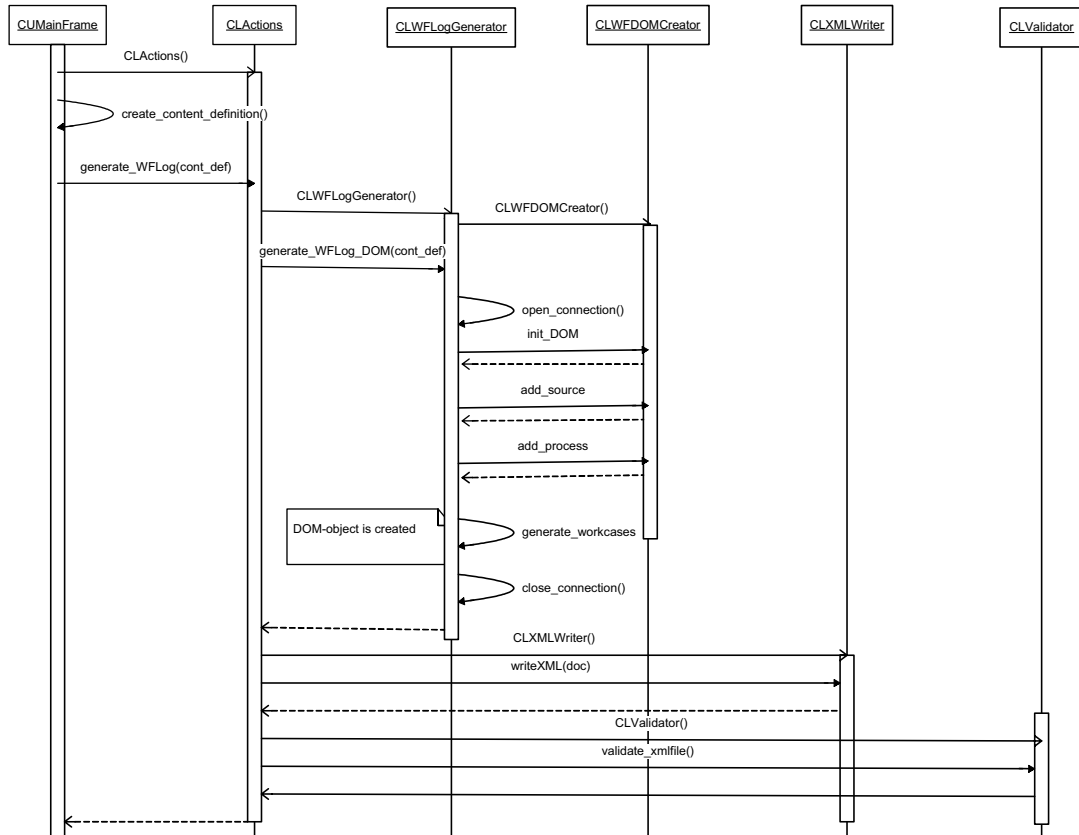


Fig. 9. Sequence diagram—CLActions.generate\_WFLog.

perspective. In Sections 4 and 5.2 we described a real process instance of this process. If these two scenarios are executed using Caramba, then TeamLog can generate the following workflow log based on the information stored in Caramba.

We can now use process mining tools such as EMiT [2,11], Thumb [29], MinSoN [4], and ProM. For example, when EMiT processes this workflow log consisting of only two instances, it produces the Petri net shown in Fig. 10.

During process mining both process instances (cases) are used. Note, that the process model constructed by EMiT indeed captures both scenarios. Fig. 10 shows that in some cases the installation plan is verified by multiple persons, and in other cases the plan is not verified. Suppose, that the management has never advised the employees to do multiple-person-verification and that many installation-plan orders are either waiting for processing or they are already delayed. If this is the case, then management can react to this situation and advise the employees to skip multiple-person-verification in order to create all installation-plans in-time. Clearly, these observations may seem trivial based on a simple process of only a few steps generated on the basis of two cases. However, the same procedure can be applied to much more complicated processes that need to deal with hundreds or even thousands of cases.

```

<Workflow_log>
  <source program="other"/>
  <process description="none" id="caramba_process_1">
    <case description="New office (Simpson Bank)_1" id="case_12">
      <log_line>
        <task_name>Case start</task_name>
        <event kind="complete"/>
        <date>08-02-2004</date>
        <time>16:57:53</time>
        <originator/>
      </log_line>
      <log_line>
        <task_name>Create installation plan</task_name>
        <event kind="complete"/>
        <date>09-02-2004</date>
        <time>12:14:01</time>
        <originator>Huchen Marta </originator>
      </log_line>
      <log_line>
        <task_name>Adapt the format of the installation
plan</task_name>
        <event kind="complete"/>
        <date>09-02-2004</date>
        <time>16:02:29</time>
        <originator>Lachs Monika </originator>
      </log_line>
      <log_line>
        <task_name>Verify installation plan</task_name>
        <event kind="complete"/>
        <date>10-02-2004</date>
        <time>11:02:11</time>
        <originator>Lachs Monika </originator>
      </log_line>
      <log_line>
        <task_name>Verify installation plan_1</task_name>
        <event kind="complete"/>
        <date>10-02-2004</date>
        <time>12:24:18</time>
        <originator>Fogosch Peter </originator>
      </log_line>
      <log_line>
        <task_name>Verify installation plan_2</task_name>
        <event kind="complete"/>
        <date>10-02-2004</date>
        <time>14:05:22</time>
        <originator>Zander Fritz </originator>
      </log_line>
      <log_line>
        <task_name>Consider comments from Peter</task_name>
        <event kind="complete"/>
        <date>11-02-2004</date>
        <time>09:07:17</time>
        <originator>Lachs Monika </originator>
      </log_line>
      <log_line>
        <task_name>Consider comments from Fritz</task_name>
        <event kind="complete"/>

```

```

        <date>11-02-2004</date>
        <time>10:08:30</time>
        <originator>Iachs Monika </originator>
    </log_line>
    <log_line>
        <task_name>Case termination</task_name>
        <event kind="complete"/>
        <date>11-02-2004</date>
        <time>10:08:30</time>
        <originator/>
    </log_line>
</case>
<case description="New office (Trust Bank)_2" id="case_25">
    <log_line>
        <task_name>Case start</task_name>
        <event kind="complete"/>
        <date>13-02-2004</date>
        <time>11:14:24</time>
        <originator/>
    </log_line>
    <log_line>
        <task_name>Create installation plan</task_name>
        <event kind="complete"/>
        <date>13-02-2004</date>
        <time>11:14:24</time>
        <originator>Huchen Marta </originator>
    </log_line>
    <log_line>
        <task_name>Adapt the format of the installation
plan</task_name>
        <event kind="complete"/>
        <date>14-02-2004</date>
        <time>08:13:01</time>
        <originator>Fogosch Peter </originator>
    </log_line>
    <log_line>
        <task_name>Add missing cost analysis</task_name>
        <event kind="complete"/>
        <date>14-02-2004</date>
        <time>14:50:21</time>
        <originator>Huchen Marta </originator>
    </log_line>
    <log_line>
        <task_name>Check cost analysis</task_name>
        <event kind="complete"/>
        <date>16-02-2004</date>
        <time>12:05:30</time>
        <originator>Fogosch Peter </originator>
    </log_line>
    <log_line>
        <task_name>Case termination</task_name>
        <event kind="complete"/>
        <date>16-02-2004</date>
        <time>12:05:30</time>
        <originator/>
    </log_line>
</case>
</process>
</Workflow_log>

```

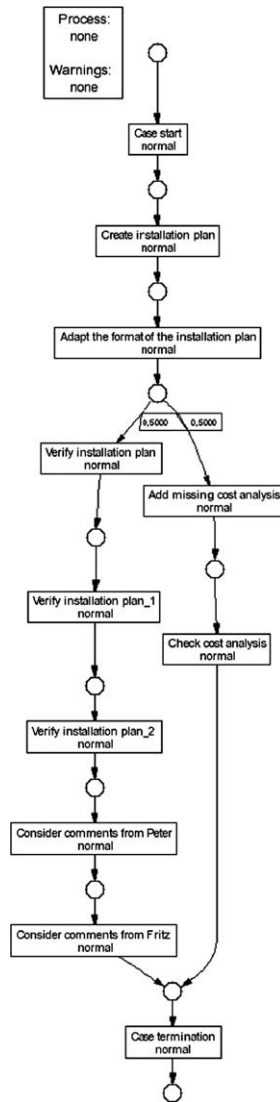


Fig. 10. The mining result expressed in terms of a Petri net (diagram was automatically generated using EMiT).

The log can also be analyzed using MinSoN as is illustrated in Fig. 11. The screenshot shows the social network constructed on the basis of the two cases. The social network shown in Fig. 11 is based on the “hand-over of work” metric. This metric assumes that if there is a transfer of work from one person to another person, then there is a relation. The more work that is transferred, between two person the stronger the relation based on “hand-over of work” is. The resulting social network can be analyzed by all kinds of tools, e.g., MinSoN can export to Agna and Net-Miner. These tools analyze both the organization as a whole and the role of each individual in the organization. Because Fig. 11 is only based on two cases, the scope of interpretation is limited. However, it illustrates the concept and the fact that through TeamLog and MinSoN it is possible to analyze the organizational context of ad-hoc business processes supported by Caramba.



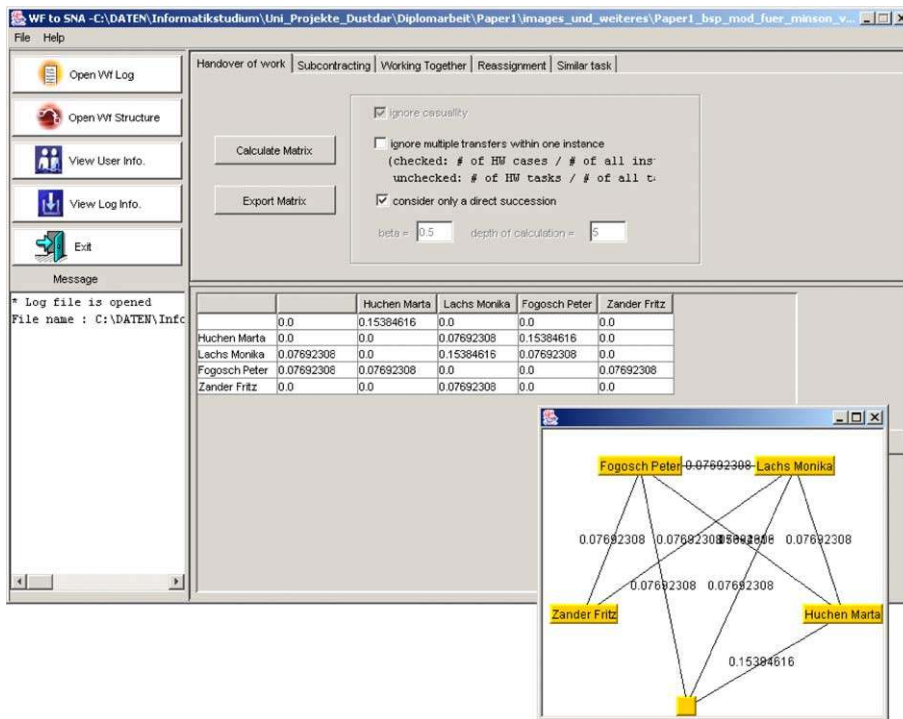


Fig. 11. Social network derived by MinSoN based on a Caramba log.

We have applied the approach presented in this paper to some real-life Caramba logs but did not yet conduct a real case study in an organization using Caramba, i.e., the paper provides a proof of concept but no empirical validation. In Section 4 we mentioned existing BPA/BAM systems such as ARIS PPM. These systems typically restrict their analysis to well-defined processes and performance indicators such as flow time. With Caramba it is easily possible to obtain performance indicators based on different timestamp information (Table 5). The two figures in this section, show that the results are quite different from existing systems, i.e., through TeamLog and EMiT/MinSoN we actually capture causal relations and the organizational context. Moreover, such information is particularly interesting for ad-hoc business processes.

## 8. Conclusion and future work

This paper investigated the application of process mining techniques to ad-hoc processes. The conclusion is that process mining is very promising in those situations where the steps in the process are logged in a systematic manner. The approach presented in this paper is generic: based on data about ad-hoc business processes, process mining can be performed, considering different views (perspectives) on the data. Using process-aware collaboration systems such as Caramba, events are logged while allowing for the flexibility required for ad-hoc business processes. As a proof of concept, TeamLog, a system that is able to extract the information required for process mining

from the Caramba database, was introduced in this paper. The resulting information is stored in an XML format that can be read by process mining tools such as EmiT and MinSoN. To illustrate the application of Caramba, TeamLog, EmiT, and MinSoN a small ad-hoc business process (“plan IT-installation for offices (banks)”) was used. Based on two scenarios the paper demonstrated automatic construction of a process model (in terms of a Petri net) and a social network. A weakness of the currently available tools is that none of them supports visualization of all perspectives.

Future work will aim at the application of the entire toolset described in this paper in real-life situations. In addition, we are extending and improving the mining tools. In fact, recently, the tools EmiT, Thumb, and MinSoN have been merged into the ProM framework. The ProM framework provides an environment where it is easy to “plug-in” new analysis methods (cf. [www.processmining.org](http://www.processmining.org)). Interesting new analysis methods offered by this framework include: genetic mining (process mining based on genetic algorithms), LTL checking (checking properties expressed in a temporal logic), e-mail mining (mapping an Exchange mailbox onto the XML format), process verification, etc.

In terms of applications, we are also looking at other workflow products allowing for more flexibility. Within the UWV we already applied the process mining tools discussed to three processes using the case handling system FLOWer (Pallas Athena). UWV (Uitvoering Werknemersverzekeringen) is the Dutch Employee Insurance Implementing Body responsible for the implementation of employee insurance schemes, such as the sickness insurance scheme (ZW), the national health insurance scheme (ZFW), the unemployment insurance scheme (WW) and the occupational disability insurance scheme (WAO). The application of tools such as EmiT, Thumb, MinSoN, and ProM within the UWV shows that highly-dynamic processes are quite challenging when it comes to process mining.

Experiences with Caramba show that it is important to extract knowledge about interaction patterns in organizational business processes. Finding interaction patterns helps in identifying the role of persons within the social network of an organization. For example, a person might act as a kind of proxy for other persons. The workflow logs presented in this paper, as well as the Caramba database in the current version, do not contain enough information to find such patterns automatically. Such an automatic pattern finding process will require additional information about activities and the relations between them. Hence, future work in extending the presented workflow log format will be required in order to implement such an automatic pattern finding process.

## **Acknowledgements**

The authors would like to thank the anonymous reviewers for their comments. Furthermore, we thank all team members of Caramba Labs Software AG. We also thank Ton Weijters, Boudewijn van Dongen, Ana Karla Alves de Medeiros, Minseok Song for their on-going work on process mining techniques and tools at Eindhoven University of Technology.

## **Appendix A**

This appendix describes an annotated version of the workflow log DTD [11]. The comments describe the data mapping between Caramba and the workflow log.

```

<!-- element Workflow_log:
      root-element, no Caramba database information required -->
<!ELEMENT Workflow_log (source?,process+)>

      <!-- element source: no contents -->
      <!ELEMENT source EMPTY>

      <!-- attribute source: constant value "other" -->
      <!ATTLIST source program (staffware|inconcert|pnet|IBM_MQ|other)
#REQUIRED>

<!-- element process:
      There is exactly one process-element in TeamLog's output.
      Section "Limitations and assumptions" contains the reason for
      that. -->
<!ELEMENT process (case*)>

      <!-- attribute id:
      Because the generated workflow log contains exactly
      one process-element, the value of the id-attribute is a
      constant ("caramba_process_1"). -->
      <!ATTLIST process id ID #REQUIRED>

      <!-- attribute description: constant value "none" -->
      <!ATTLIST process description CDATA "none">

      <!-- element case:
      Under the assumption that all workcases are instances of the
      same real life process TeamLog creates a case-element for
      each workcase. -->
<!ELEMENT case (log_line*)>

      <!-- attribute id:
      "case_" + CARAMBA_AI.ID of the "W"-record e.g. "case_12"
      if the workcase-records ID is 12 -->
      <!ATTLIST case id ID #REQUIRED>

      <!-- attribute description:
      CARAMBA_AI.WC_SUBJECT + "_" + number
      Different workcases can have the same content in
      CARAMBA_AI.WC_SUBJECT. Therefore a serial number is
      appended to get a unique description (is advised in [5]).
      If CARAMBA_AI.WC_SUBJECT is null, the description-
      attribute gets the constant value "workcase_" + number
      (e.g. "workcase_1", "workcase_2"). -->
      <!ATTLIST case description CDATA "none">

<!-- element log_line:
      TeamLog generates one log-line for each activity instance.
      Additionally to that it automatically adds a creation-
      logline at the beginning and a termination-logline at
      the end. -->

```

```

<!ELEMENT log_line (task_name,task_instance?, event?, date?,
                    time?, originator?)>

  <!-- element task_name:
    For creation logline: "Case start"
    For termination logline: "Case termination"
    The remainder of this section gives additional
    information about task_names content. -->
  <!ELEMENT task_name (#PCDATA)>

  <!-- element task_instance:
    This field is designed to store the number of task-
    executions. The Caramba database does not yet contain
    this kind of information. Therefore it's not part of
    TeamLog's output. -->
  <!ELEMENT task_instance (#PCDATA)>

  <!-- element event: no contents. -->
  <!ELEMENT event EMPTY>

  <!-- attribute kind:
    Event information is information about the change of
    state. The Caramba database does not contain event
    information. Therefore the value of this attribute is
    constant ("complete"). -->
  <!ATTLIST event kind
    (normal|schedule|start|withdraw|suspend|resume|abort|complete)
    #REQUIRED>

  <!-- element date: Table 5 contains information about this
    elements content. -->
  <!ELEMENT date (#PCDATA)>

  <!-- element time: Table 5 contains information about this
    elements content. -->
  <!ELEMENT time (#PCDATA)>

  <!-- element originator:information about the contents can be
    found in section 6.4 - "Social network analysis" .-->
  <!ELEMENT originator (#PCDATA)>

```

## References

- [1] W.M.P. van der Aalst, P.J.S. Berens, Beyond workflow management: product-driven case handling, in: S. Ellis, T. Rodden, I. Zigurs (Eds.), International ACM SIGGROUP Conference on Supporting Group Work (GROUP 2001), ACM Press, New York, 2001, pp. 42–51.
- [2] W.M.P. van der Aalst, B.F. van Dongen, Discovering workflow performance models from timed logs, in: Y. Han, S. Tai, D. Wikarski (Eds.), International Conference on Engineering and Deployment of Cooperative Information Systems (EDCIS 2002), Lecture Notes in Computer Science, vol. 2480, Springer-Verlag, Berlin, 2002, pp. 45–63.
- [3] W.M.P. van der Aalst, K.M. van Hee, Workflow Management: Models, Methods, and Systems, MIT Press, Cambridge, MA, 2002.
- [4] W.M.P. van der Aalst, M. Song, Mining social networks: uncovering interaction patterns in business processes, in: J. Desel, B. Pernici, M. Weske (Eds.), International Conference on Business Process Management (BPM 2004), Lecture Notes in Computer Science, vol. 3080, Springer-Verlag, Berlin, 2004, pp. 244–260.

- [5] W.M.P. van der Aalst, B.F. van Dongen, J. Herbst, L. Maruster, G. Schimm, A.J.M.M. Weijters, Workflow mining: a survey of issues and approaches, *Data and Knowledge Engineering* 47 (2) (2003) 237–267.
- [6] W.M.P. van der Aalst, A.J.M.M. Weijters (Eds.), *Process Mining, Special Issue of Computers in Industry*, vol. 53(3), Elsevier Science Publishers, Amsterdam, 2004.
- [7] W.M.P. van der Aalst, A.J.M.M. Weijters, L. Maruster, Workflow mining: discovering process models from event logs, *IEEE Transactions on Knowledge and Data Engineering* 16 (9) (2004) 1128–1142.
- [8] R. Agrawal, D. Gunopulos, F. Leymann, Mining process models from workflow logs, in: *Sixth International Conference on Extending Database Technology*, 1998, pp. 469–483.
- [9] F. Casati, S. Ceri, B. Pernici, G. Pozzi, Workflow evolution, *Data and Knowledge Engineering* 24 (3) (1998) 211–238.
- [10] J.E. Cook, A.L. Wolf, Discovering models of software processes from event-based data, *ACM Transactions on Software Engineering and Methodology* 7 (3) (1998) 215–249.
- [11] B.F. van Dongen, W.M.P. van der Aalst, EMiT: a process mining tool, in: J. Cortadella, W. Reisig (Eds.), *Application and Theory of Petri Nets 2004*, Lecture Notes in Computer Science, vol. 3099, Springer-Verlag, Berlin, 2004, pp. 454–463.
- [12] S. Dustdar, Caramba—A process-aware collaboration system supporting ad hoc and collaborative processes in virtual teams, *Distributed and Parallel Databases* 15 (1) (2004) 45–66.
- [13] C. Ellis, K. Keddara, ML-DEWS: modeling language to support dynamic evolution within workflow systems, *Computer Supported Co-operative Work* 9 (3/4) (2000) 293–333.
- [14] Gartner, Gartner's application development and maintenance research note M-16-8153, The BPA Market Catches another Major Updraft, 2002. Available from: <http://www.gartner.com>.
- [15] D. Grigori, F. Casati, U. Dayal, M.C. Shan, Improving business process quality through exception understanding, prediction, and prevention, in: P. Apers, P. Atzeni, S. Ceri, S. Paraboschi, K. Ramamo-Hanarao, R. Snodgrass (Eds.), *Proceedings of 27th International Conference on Very Large Data Bases (VLDB'01)*, Morgan Kaufmann, 2001, pp. 159–168.
- [16] J. Herbst, A machine learning approach to workflow management, in: *Proceedings 11th European Conference on Machine Learning*, Lecture Notes in Computer Science, vol. 1810, Springer-Verlag, Berlin, 2000, pp. 183–194.
- [17] IDS Scheer, ARIS Process Performance Manager (ARIS PPM), 2002. Available from: <http://www.ids-scheer.com>.
- [18] S. Jablonski, C. Bussler, *Workflow Management: Modeling Concepts, Architecture, and Implementation*, International Thomson Computer Press, London, UK, 1996.
- [19] G. Keller, T. Teufel, *SAP R/3 Process Oriented Implementation*, Addison-Wesley, Reading, MA, 1998.
- [20] P. Lawrence (Ed.), *Workflow Handbook 1997*, Workflow Management Coalition, John Wiley and Sons, New York, 1997.
- [21] F. Leymann, D. Roller, *Production Workflow: Concepts and Techniques*, Prentice-Hall PTR, Upper Saddle River, NJ, USA, 1999.
- [22] D.C. Marinescu, in: *Internet-Based Workflow Management: towards a Semantic Web*, Wiley Series on Parallel and Distributed Computing, vol. 40, Wiley-Interscience, New York, 2002.
- [23] A.K.A. de Medeiros, W.M.P. van der Aalst, A.J.M.M. Weijters, Workflow mining: current status and future directions, in: R. Meersman, Z. Tari, D.C. Schmidt (Eds.), *On the Move to Meaningful Internet Systems 2003: CoopIS, DOA, and ODBASE*, Lecture Notes in Computer Science, vol. 2888, Springer-Verlag, Berlin, 2003, pp. 389–406.
- [24] M. zur Muehlen, M. Rosemann, Workflow-based process monitoring and controlling—technical and organizational issues, in: R. Sprague (Ed.), *Proceedings of the 33rd Hawaii International Conference on System Science (HICSS-33)*, IEEE Computer Society Press, Los Alamitos, California, 2000, pp. 1–10.
- [25] M. Reichert, P. Dadam, ADEPTflex: supporting dynamic changes of workflow without losing control, *Journal of Intelligent Information Systems* 10 (2) (1998) 93–129.
- [26] W. Reisig, G. Rozenberg (Eds.), *Lectures on Petri Nets I: Basic Models*, Lecture Notes in Computer Science, vol. 1491, Springer-Verlag, Berlin, 1998.
- [27] M. Sayal, F. Casati, M.C. Shan, U. Dayal, Business process cockpit, in: *Proceedings of 28th International Conference on Very Large Data Bases (VLDB'02)*, Morgan Kaufmann, 2002, pp. 880–883.

- [28] J. Scott, *Social Network Analysis*, Sage, Newbury Park CA, 1992.
- [29] A.J.M.M. Weijters, W.M.P. van der Aalst, Rediscovering workflow models from event-based data using little thumb, *Integrated Computer-Aided Engineering* 10 (2) (2003) 151–162.
- [30] S. Wasserman, K. Faust, *Social Network Analysis: Methods and Applications*, Cambridge University Press, Cambridge, 1994.
- [31] D. Georgakopoulos et al., Managing escalation of collaboration processes in crisis mitigation situations, in: *Proceedings of the 16th International Conference on Data Engineering*, 2000.
- [32] C.A. Ellis, C. Maltzahn, The Chautauqua workflow system, in: *Proceedings of 30th International Conference on System Science*, Maui, 1997.



**Shahram Dustdar** is an Associate Professor at the Distributed Systems Group, Vienna University of Technology. His previous work experience includes several years as the founding head of the Center for Informatics (ZID) at the University of Art and Industrial Design in Linz (1991–1999) and as the director of Coordination Technologies at the Design Transfer Center in Linz (1999–2000). While on sabbatical leave he was a post-doctoral research scholar at the London School of Economics (Information Systems Department) (1993 and 1994), and a visiting research scientist at NTT Multimedia Communications Labs in Palo Alto, USA during 1998. Since 1999 he works as the co-founder and chief scientist of Caramba Labs Software AG (CarambaLabs.com) in Vienna, a venture capital co-funded software company focused on software for collaborative processes in teams. More information can be found on: <http://www.infosys.tuwien.ac.at/Staff/sd>.



**Thomas Hoffmann** is a M.Sc. thesis student at the Distributed Systems Group, Vienna University of Technology. His research interests include process mining and Web services. In 2003, he developed an editor (BPELComposer) for the Business Process Execution Language (BPEL), which is used for Web services composition. Since 1998 he has been working for Management Solutions IT GmbH, a small IT-consulting company, which focuses on the development of workflow systems of financial service organizations.



**Wil van der Aalst** is a full professor of Information Systems and head of the Information Systems sub-department of the department of Technology Management at the Technische Universiteit Eindhoven. He is also an adjunct professor at the Faculty of Information Technology of Queensland University of Technology. He holds an M.Sc. in Computing Science (1988) and a Ph.D. in Mathematics (1992) awarded by the Technische Universiteit Eindhoven. He has been as assistant/associate/full professor at the department of Mathematics and Computing Science of the Technische Universiteit Eindhoven. From 1993 to 1998 he also worked as a part-time consultant for Bakkenist. He has been a visiting professor to several universities all around the globe. His research interests include business process management, information systems, simulation, Petri nets, process models, workflow management systems, process mining, verification techniques, enterprise resource planning systems, computer supported cooperative work, and interorganizational business processes.