

ORIGINAL ARTICLE

Mitochondrial DNA variants help monitor the dynamics of *Wolbachia* invasion into host populations

HL Yeap¹, G Rašić¹, NM Endersby-Harshman¹, SF Lee¹, E Arguni², H Le Nguyen³ and AA Hoffmann¹

Wolbachia is the most widespread endosymbiotic bacterium of insects and other arthropods that can rapidly invade host populations. Deliberate releases of *Wolbachia* into natural populations of the dengue fever mosquito, *Aedes aegypti*, are used as a novel biocontrol strategy for dengue suppression. Invasion of *Wolbachia* through the host population relies on factors such as high fidelity of the endosymbiont transmission and limited immigration of uninfected individuals, but these factors can be difficult to measure. One way of acquiring relevant information is to consider mitochondrial DNA (mtDNA) variation alongside *Wolbachia* in field-caught mosquitoes. Here we used diagnostic mtDNA markers to differentiate infection-associated mtDNA haplotypes from those of the uninfected mosquitoes at release sites. Unique haplotypes associated with *Wolbachia* were found at locations outside Australia. We also performed mathematical and qualitative analyses including modelling the expected dynamics of the *Wolbachia* and mtDNA variants during and after a release. Our analyses identified key features in haplotype frequency patterns to infer the presence of imperfect maternal transmission of *Wolbachia*, presence of immigration and possibly incomplete cytoplasmic incompatibility. We demonstrate that ongoing screening of the mtDNA variants should provide information on maternal leakage and immigration, particularly in releases outside Australia. As we demonstrate in a case study, our models to track the *Wolbachia* dynamics can be successfully applied to temporal studies in natural populations or *Wolbachia* release programs, as long as there is co-occurring mtDNA variation that differentiates infected and uninfected populations.

Heredity (2016) **116**, 265–276; doi:10.1038/hdy.2015.97; published online 4 November 2015

INTRODUCTION

Wolbachia is the most widespread endosymbiotic bacterium of insects and other arthropods (Zug and Hammerstein, 2012). It is vertically transmitted from mother to offspring. It also often exhibits effects on host reproductive biology allowing rapid invasion of host populations (cf, Turelli and Hoffmann, 1991). One such reproductive manipulation is cytoplasmic incompatibility (CI), manifested as death of embryos produced by a fusion of *Wolbachia*-infected sperm with uninfected eggs or eggs that carry an incompatible *Wolbachia* infection (Yen and Barr, 1971). This mechanism gives a reproductive advantage to *Wolbachia*-infected females whose eggs are protected from CI, driving the *Wolbachia* invasion through host populations (Hoffmann and Turelli, 1997).

Because *Wolbachia* infection also confers increased host resistance to many pathogens, it is considered as a novel biocontrol method for suppressing vector-borne human diseases such as dengue (Moreira *et al.*, 2009). The main vector of dengue, the *Aedes aegypti* mosquito, does not carry *Wolbachia* infections in the wild (Kittayapong *et al.*, 2000), but there are now several *Wolbachia*-infected *A. aegypti* strains created by laboratory transfection from other insect hosts (McMeniman *et al.*, 2009; Walker *et al.*, 2011). *Wolbachia* infections originating from *Drosophila melanogaster* (*wMel* and *wMelPop*) and *Aedes albopictus* (*wAlbB*) reduce dengue virus load significantly in *A. aegypti* (Bian *et al.*, 2010; Moreira *et al.*, 2009; Walker *et al.*, 2011).

In addition, a strain like *wMelPop* can reduce the adult lifespan and viability of quiescent eggs in *A. aegypti* (McMeniman *et al.*, 2009; McMeniman and O'Neill, 2010b; Yeap *et al.*, 2011). Life-shortening and virus interference effects in the mosquito host are expected to decrease dengue incidence, given that older mosquitoes are more likely to transmit diseases to humans (cf, Focks *et al.*, 1995).

Wolbachia-based strategies for disease suppression rely on the release of mosquitoes with a particular *Wolbachia* infection into the field. The *Wolbachia* then invades and replaces the resident population with mosquitoes that have a reduced potential for disease transmission (Hoffmann *et al.*, 2011). The successful introduction of *Wolbachia* into natural mosquito populations requires the release of high-quality material that can invade the population and persist over time. Such release material should contain a *Wolbachia* infection that induces very strong CI, (near) perfect maternal transmission (that is, very weak maternal transmission leakage) and a small fitness cost to the host (Hoffmann *et al.*, 2015).

The quality of release material can be assessed in several ways: (1) via laboratory fitness tests (see, for example, McMeniman and O'Neill, 2010a; Hoffmann *et al.*, 2011; Yeap *et al.*, 2011; Ross *et al.*, 2014; Turley *et al.*, 2013), (2) through the monitoring of performance during trial releases (Yeap *et al.*, 2013) as well as (3) by tracking the changes in *Wolbachia* infection frequency over time (Hoffmann *et al.*, 2011; Hoffmann *et al.*, 2014). The latter can indicate the stability of the

¹Pest and Environmental Adaptation Research Group (PEAR), School of BioSciences, Bio21 Institute, The University of Melbourne, Parkville, Victoria, Australia; ²Faculty of Medicine, Universitas Gadjah Mada, Jl. Farmako, Sekip Utara, Yogyakarta, Indonesia and ³Laboratory of Medical Entomology, National Institute of Hygiene and Epidemiology, Hanoi, Vietnam

Correspondence: Dr HL Yeap, Commonwealth Scientific and Industrial Research Organisation (CSIRO), Clunies Ross Road, Acton, Australian Capital Territory 2601, Australia. E-mail: henglin.yeap@csiro.au

Received 28 May 2015; revised 14 September 2015; accepted 22 September 2015; published online 4 November 2015

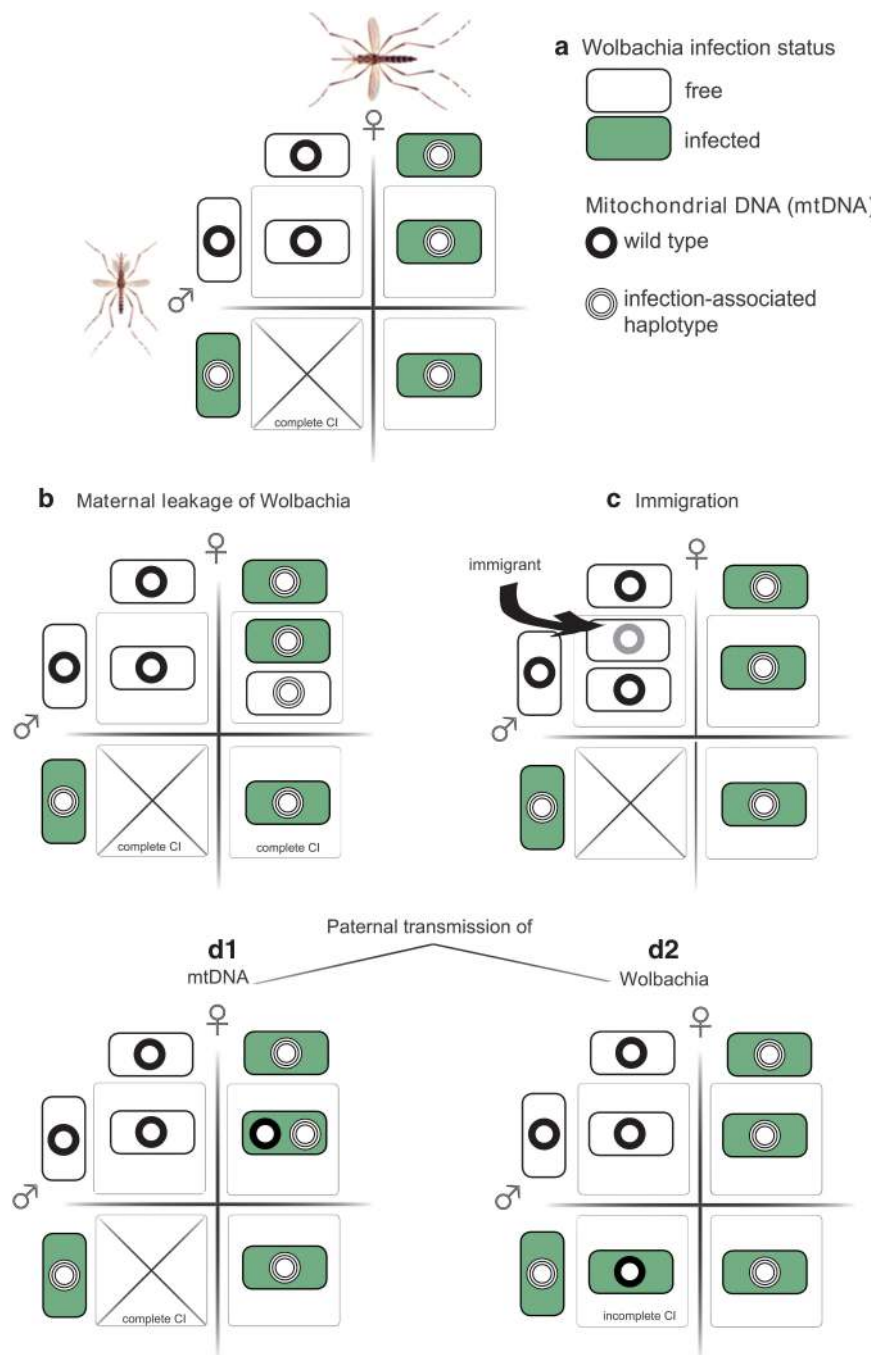


Figure 1 Diagrams depicting individuals with associated mitochondrial haplotypes and *Wolbachia* infection status that would be sampled from the release site under: (a) complete CI and perfect maternal transmission of *Wolbachia* (null model); (b) imperfect maternal transmission of *Wolbachia* but complete CI. Incomplete CI would also lead to some uninfected offspring in the infected male \times uninfected female cross; (c) immigration of uninfected individuals, assuming the immigrating mosquitoes are similar to the uninfected individuals, hence differentiated from the infected individuals; (d) paternal transmission of mitochondria (D1) or *Wolbachia* (D2). For (D1), if CI is incomplete, there will be presence of uninfected offspring that are heteroplasmic, and for (D2) if CI is complete, the profile will be identical to (a). Heteroplasmic individuals can either produce heteroplasmic gametes or randomly pass on only one haplotype.

infection under possible imperfect maternal transmission and/or immigration of uninfected individuals.

A different approach for tracking the dynamics of *Wolbachia* in invaded populations is to examine mitochondrial DNA (mtDNA) variants associated with the infection. Because both *Wolbachia* and mitochondria are maternally inherited, the mitochondrial genome will be in linkage disequilibrium with the endosymbiont (Figure 1, upper).

The level of disequilibrium between the two genomes depends on the fidelity of maternal transmission and incidence of paternal transmission (Turelli *et al.*, 1992; Johnstone and Hurst, 1996). Linkage disequilibrium between *Wolbachia* and mtDNA variation was first reported in *Drosophila simulans* (Hale and Hoffmann, 1990), following the spread of the *Riverside* infection (*w*Ri) in California (Turelli and Hoffmann, 1991; Turelli and Hoffmann, 1995).

Such co-occurrence of mtDNA and *Wolbachia* infection has been detected subsequently in other species (see, for example, Armbruster *et al.*, 2003; Schuler *et al.*, 2013).

As a consequence of CI and maternal co-transmission of *Wolbachia* and mtDNA, an isolated population invaded by *Wolbachia* would be likely to contain only the mitochondrial background associated with the infection, regardless of the *Wolbachia* maternal transmission rates (Turelli *et al.*, 1992). In *A. aegypti*, *Wolbachia* induces very strong CI (>99.9%) (McMeniman *et al.*, 2009; Walker *et al.*, 2011; Yeap *et al.*, 2011) and all transfected mosquitoes should share a common mitochondrion as they are descendants of a single female (McMeniman *et al.*, 2009; Walker *et al.*, 2011). This association provides an opportunity to study *Wolbachia* dynamics following the invasion of the *A. aegypti* field populations, as long as the local and release mosquitoes have divergent mitochondrial genomes. In particular, deviations from perfect *Wolbachia* transmission should generate uninfected mosquitoes with a mitochondrial background associated with the infection, whereas immigration of uninfected mosquitoes should lead to the occurrence/maintenance of uninfected mosquitoes with a background different from the infected mosquitoes.

Here, our first aim was to (1) provide a set of diagnostic mitochondrial molecular markers for tracking the *Wolbachia* dynamics in populations of the dengue fever mosquito *A. aegypti*, given the recent field releases of *Wolbachia*-infected mosquitoes in Australia, Vietnam, Indonesia and Brazil to suppress dengue transmission. Furthermore, we aimed to (2) develop a model framework for the *Wolbachia* infection and haplotype counts. We define a null model with the assumptions of perfect maternal co-transmission of mitochondria and *Wolbachia*, complete CI and isolation of an invaded field population. Deviations from null expectations are then explored and used to generate hypothetical scenarios for transmission parameters based on known studies of *A. aegypti* invasion with approximated fitness and population parameters. We also apply our framework to elucidate parameters of a documented *Wolbachia* invasion in *Drosophila*. Finally, we discuss applications (such as sampling strategies) and challenges in using mitochondrial variation as a monitoring tool for understanding *Wolbachia* dynamics in host populations.

MATERIALS AND METHODS

Development of diagnostic mitochondrial molecular markers in *A. aegypti*

Samples. To obtain diagnostic markers that differentiate mitochondrial haplotypes associated with the *Wolbachia* infection from haplotypes of uninfected individuals, mtDNA variation was analysed in *A. aegypti* individuals from different sources. (1) From laboratory colonies with three different *Wolbachia* transfections: wMel and wMelPop (originating from *D. melanogaster*; McMeniman *et al.*, 2008; Walker *et al.*, 2011) and wAlbB (originating from *A. albopictus*; Xi *et al.*, 2005). (2) From uninfected mosquitoes originating from field populations in Australia, Indonesia, Vietnam and Brazil. In total, we analysed amplicon sequence data in 82 individuals from the *Wolbachia*-infected colonies and 227 uninfected individuals from the field, and double-digest restriction associated DNA (ddRAD) sequences in 257 individuals from the field (including the wMel infected). Sample sizes and dates for each collection are summarised in Table 1.

Samples were screened for single-nucleotide polymorphisms (SNPs) in several regions of the *A. aegypti* mitochondrial genome using amplicon sequencing and ddRAD sequencing (ddRAD-seq). As the ddRAD sequences span a wider region, they could reveal additional variation to separate infected versus uninfected individuals.

Amplicon sequencing. We screened regions of three mitochondrial genes: (1) *cyt b* gene (307 bp; Mousson *et al.*, 2005), (2) *ND5* gene (~450 bp; Mousson *et al.*, 2005) and (3) *COI* gene (Lunt *et al.*, 1996). (Table 1). Details of

Table 1 Details of samples processed

Line	Location	Year	n	Number sequenced for each marker								
				COI	ND5	ND4	1	4	6	16		
wMel	Laboratory	2010	29	29								
	Gv and YK	2011, 2012	12	12	10	5	5	5	5	5	5	5
wMelPop	Laboratory	2009	23	23								
	MB	2012	10	10	10	5	5	5	5	5	5	5
wAlbB	Laboratory	2014	10	10	10	10	10	10	10	10	10	10
Uninfected	Gv	2010, 2011	85	79	79	78	78	79	78	75	75	75
	YK	2011	27	24	24	23	27	23	23	22	22	22
	Indo	2011	30	30	30	27	30	30	30	26	26	26
	Viet	2011	50	30	30	11	26	30	30	11	11	11
	Br	2012	38	30	30	33	33	31	32	30	30	30
TOTAL			314	277	223	192	214	213	213	184	184	184

Abbreviations: BR, Rio de Janeiro, Brazil; Gv, Gordonvale, QLD, Australia; Indo, Yogyakarta, Indonesia; n, number of individuals screened for at least one of the markers; Viet, Trí Nguyễn Island, Vietnam; YK, Yorkeys Knob, QLD, Australia.

primer sequences and reaction conditions are found in Supplementary Tables S1 and S2.

PCR amplicons were sequenced from both directions using Sanger sequencing (Macrogen Inc., Geumcheongu, Seoul, South Korea) and the chromatograms were analysed using Geneious version 6.1.5 (<http://www.geneious.com>, Kearse *et al.*, 2012). The identity of amplicons was confirmed with the BLASTn sequence homology searches against the National Center for Biotechnology Information (NCBI) nonredundant nucleotide database.

Samples from Australia and overseas ($n=223$) were also screened at five additional mitochondrial regions: *ND4* region (da Costa-da-Silva *et al.*, 2005) and four mitochondrial regions (amplified by primer pairs 1, 4, 6 and 16) that amplified 900–1200 bp fragments across the mitochondrial genome (Behura *et al.*, 2011) (Table 1 and Supplementary Tables S1 and S2).

The ddRAD-seq. Nucleotide variation in the mitochondrial genome was also screened in 257 individuals using the 100 bp paired-end Illumina sequencing (Randwick, NSW, Australia) of ddRAD-seq. Customised ddRAD libraries were constructed following the protocol described by Rašić *et al.* (2014b). In brief, 100 ng of DNA from each individual was digested with the restriction enzymes *NlaIII* and *MluCI* (NEB, Ipswich, MA, USA), and ligated to the Illumina P1 and P2 adapters with customised barcode sequences (Rašić *et al.*, 2014b). After sample pooling and purification, size selection of fragments from 300 to 450 bp was completed with the Pippin Prep (Sage Sciences, Beverly, MA, USA) protocol. The final library was enriched using 12 PCR cycles with standard Illumina primers.

Raw Illumina sequences were filtered and trimmed to the length of 80 bp using FASTX-Toolkit (http://hannonlab.cshl.edu/fastx_toolkit/index.html; key: citeulike: 9103573). The majority of the ddRAD reads in these libraries represented nuclear sequences (Rašić *et al.*, 2014b, and unpublished data), but these were not central to the current work where inferences were based only on mtDNA patterns. Therefore, we retained only reads that were uniquely aligned to the mitochondrial reference genome of *A. aegypti* (Genbank identifier: 164523399) (Behura *et al.*, 2011) by the short read aligner Bowtie (Langmead *et al.*, 2009). Variant and likelihood-based genotype calling was done on loci with a depth of at least five reads using the default parameters of the Stacks pipeline (Catchen *et al.*, 2013).

Sequence analyses. All coding sequences were first checked for the presence of premature stop codons using Geneious version 6.1.5 (<http://www.geneious.com>, Kearse *et al.*, 2012). Haplotype networks were generated in HapStar-0.7 written in Python (Teacher and Griffiths, 2011). HapStar generates the network graph as a minimum spanning tree between all haplotypes, that is, computing the lowest total Hamming distance (number of mismatches) between all haplotypes. All pairwise Hamming distances between haplotypes were generated using a custom Python 2.7 script. Missing nucleotides in the ddRAD data set

were excluded from the distance calculation. Given that HapStar does not account for missing haplotype nodes, we also generated the network graph using TCS (Clement *et al.*, 2000). We considered sequences to be potentially heteroplasmic if their chromatograms contained double peaks (50–100% height) that were present in both sequencing directions, and/or if they were heterozygous in the ddRAD analysis. The potential heteroplasmic sequences were excluded from the haplotype tree reconstruction.

Wolbachia dynamics modelling

We were interested in identifying haplotype frequency profiles in infected and uninfected populations under a combination of suboptimal *Wolbachia* transmission effects, such as maternal leakage and presence of immigration/emigration from neighbouring populations. We were particularly interested in two distinct *Wolbachia* invasion fates, namely (1) a *Wolbachia* infection persisting in a population and (2) a *Wolbachia* infection that fails to invade and is lost from a population.

We adapted the overlapping generation model of Turelli (2010) to incorporate maternal transmission leakage, emigration/immigration and paternal transmission of *Wolbachia*. We did not incorporate rare paternal transmission of mitochondria for which the mode of inheritance would probably be dependent on the assortment of a high density of maternally derived mtDNA and a very low density of paternally derived mtDNA.

Modelling the Wolbachia infection counts. Using the nomenclature of Turelli (2010), we denoted Infected and Uninfected mosquitoes as *I* and *U*, with the number of adult (A) infected and uninfected reproductive females at day *t* as $I_{A,t}$ and $U_{A,t}$; and the number of embryonic (E) females produced at day *t* as $I_{E,t}$ and $U_{E,t}$ (see Table 2 for a list of symbols). Similarly, we used an average length of pre-reproductive period, τ , with $\tau+1$ as the period before a given female starts to reproduce. We assumed that both infected and uninfected individuals spent similar amount of time as pre-reproductives, that is, $\tau_I = \tau_U$. We also defined b_I and b_U as the number of female embryos produced per day by an infected and uninfected female respectively. The parameters determining *Wolbachia* dynamics are μ (the probability of an infected female not transmitting the infection to the eggs), H (the hatch rate of uninfected eggs fertilised by sperm from infected males) and ξ

(the probability of *Wolbachia* transmission from infected males). For any given time, *t*, the number of pre-reproductive infected and uninfected females ($I_{E,t}$ and $U_{E,t}$) can be expressed as:

$$I_{E,t} = b_I[(1 - \mu) + p_I \mu \xi H] I_{A,t} + b_U p_I \xi H U_{A,t}$$

and

$$U_{E,t} = b_U[(1 - p_U) \mu + p_U \mu (1 - \xi) H] I_{A,t} + b_U [p_U (1 - \xi) H + 1 - p_U] U_{A,t}$$
(1)

The part of the equation multiplied by $I_{A,t}$ denotes the number of offspring from an infected female, whereas the part multiplied by $U_{A,t}$ denotes the number of offspring from an uninfected female (see Table 2 for definitions and symbols and Table 3 for derivation).

To account for fitness differences in egg viability in infected and uninfected individuals, we set the average probabilities of an infected and uninfected egg surviving to the larval stage as δ_I and δ_U respectively, and average probabilities of infected and uninfected larvae surviving to sexually mature adults, irrespective of larvae competition, as s_I and s_U respectively. Then, the number of reproductive infected and uninfected females at time $t+1$, given τ days to develop into reproductive adults without larval competition and immigration, can be expressed as:

$$I_{A,t+1} = v_I I_{A,t} + I_{E,t-\tau} \delta_I s_I$$

and

$$U_{A,t+1} = v_U U_{A,t} + U_{E,t-\tau} \delta_U s_U$$
(2)

The number of resultant reproductive adults is also dependent on the survival of reproductive adults from the previous day (v).

To incorporate larval competition with density-dependent larval mortality, we partitioned the life stages to egg, larval and post-larval pre-reproductives. Egg and post-larval pre-reproductives (average duration ω and κ days respectively) were considered as not being in competition for resources with larval stages. Eggs laid on day $t-\tau$ would have hatched on day $t-\tau+\omega$, and larvae on that day would have encountered larvae that were laid as eggs as far back as $\tau-\kappa+1$ days previously, that is, on day $t-2\tau+\omega+\kappa+1$. Thus, the average number of larvae encountered per day by larvae that were laid as eggs on day $t-\tau$ (here denoted as L) was the sum of pre-reproductives from $t-2\tau+\omega+\kappa+1$ to $t-\kappa$ divided by days spent as larvae (that is, $\tau-\omega-\kappa$):

$$L = \frac{1}{\tau - \omega - \kappa} \sum_{i=\kappa}^{2\tau - \omega - \kappa - 1} (I_{E,t-i} \delta_I + U_{E,t-i} \delta_U)$$
(3)

Following previous studies (Hancock *et al.*, 2011), we used an exponential decay function dependent on the average number of larvae encountered per day by eggs laid on $t-\tau$ day:

$$I_{A,t+1}^{**} = v_I I_{A,t} + I_{E,t-\tau} \delta_I s_I * \exp(-aL^c)$$

and

$$U_{A,t+1}^{**} = v_U U_{A,t} + U_{E,t-\tau} \delta_U s_U * \exp(-aL^c),$$
(4)

where a and c are larval density-dependent constants. The superscripts ‘**’ are referenced below.

Migration modelling. For emigration/immigration, we considered a simple scenario where only two populations interact, and assumed the same dispersal rate for both infected and uninfected individuals. We also assumed that only reproductive adult females are capable of emigrating/immigrating. We let $I_{A,t}(1)$, $U_{A,t}(1)$, $I_{A,t}(2)$ and $U_{A,t}(2)$ denote the number of infected and uninfected adults at time *t* in populations 1 and 2, respectively, and m represents the emigration/immigration rate per generation between the two populations. Then, the number of infected and uninfected adults at time $t+1$ in populations 1 and 2 can be expressed as:

$$I_{A,t+1}(1) = I_{A,t+1}^{**}(1) + \frac{m}{\tau} (I_{A,t}(2) - I_{A,t}(1))$$

$$I_{A,t+1}(2) = I_{A,t+1}^{**}(2) + \frac{m}{\tau} (I_{A,t}(1) - I_{A,t}(2))$$

$$U_{A,t+1}(1) = U_{A,t+1}^{**}(1) + \frac{m}{\tau} (U_{A,t}(2) - U_{A,t}(1))$$

$$U_{A,t+1}(2) = U_{A,t+1}^{**}(2) + \frac{m}{\tau} (U_{A,t}(1) - U_{A,t}(2))$$
(5)

The value of m was divided by τ (assumed to be the average generation time) to indicate a daily migration rate.

Table 2 Equation symbols (adapted from Turelli, 2010)

Symbol	Definition
$b_I(b_U)$	Number of female embryos produced by an I (U) female per day
H	Hatch rate of incompatible crosses (that is, infected sperm with uninfected egg)
$I_{A,t}(1)$	Number of I reproductive females at time <i>t</i> in population 1;
$U_{A,t}(1)$	Number of U reproductive females at time <i>t</i> at population 1;
$I_{E,t}(U_{E,t})$	Number of newly produced I (U) female embryos at time <i>t</i>
$I_{\alpha,t}(I_{\beta,t})$	Number of I reproductive females with α (β) mitochondrial background
$U_{\alpha,t}(U_{\beta,t})$	Number of U reproductive females with α (β) mitochondrial background at time <i>t</i>
p_I	Frequency of reproductive I females at time <i>t</i> , $I_{A,t}/(I_{A,t}+U_{A,t})$
α_I, β_I	Frequency of α (β) background in reproductive I females at time <i>t</i> , that is, $I_{\alpha,t}/I_{A,t}$ and $I_{\beta,t}/I_{A,t}$
α_U, β_U	Frequency of α (β) background in reproductive U females at time <i>t</i> , that is, $U_{\alpha,t}/U_{A,t}$ and $U_{\beta,t}/U_{A,t}$
$s_I(s_U)$	Probability of I juvenile (U juvenile) post egg stage becoming a reproductive adult (irrespective of CI)
$\delta_I(\delta_U)$	Probability of I (U) eggs surviving to larval stage
$\tau_I(\tau_U)$	Average length of the pre-reproductive period for I (U); reproduction begins at τ_I+1 (τ_U+1)
$v_I(v_U)$	Daily survival rate of I (U) reproductive adults
μ	Probability of an infected female producing uninfected offspring (maternal leakage)
ξ	Probability of paternal transmission of <i>Wolbachia</i>
m	Emigration/immigration rate of mosquitoes between two populations per generation
a, c	Parameters for larval density-dependent mortality
ω	Length (in days) of pre-reproductive period spent as egg
κ	Length (in days) of pre-reproductive period spent as pupae and pre-reproductive adult
$b_I(b_U)$	Number of female embryos produced by an Infected, I (Uninfected, U) female per day
H	Hatch rate of incompatible crosses (that is, infected male cross with uninfected female)

Abbreviations: I, infected; U, uninfected.

Table 3 Punnett square of the uninfected/infected cross and probabilities of uninfected/infected egg

Parents	Uninfected female, $U_{A,t}$	Infected female, $I_{A,t}$
Uninfected male ($1-p_U$)	U : 1 I : 0	U : infection fails to transfer maternally; probability μ I : infection transmitted maternally; probability $1-\mu$
Infected male (p_I)	U : viable embryo produced and no paternal transmission of infection; probability $=(1-\xi)H$ I : viable embryo produced and paternal transmission of infection occurs; probability $=\xi H$	U : infection fails to transmit maternally, viable embryo produced and no paternal transmission; probability $\mu(1-\xi)H$ I : Infection transmitted maternally; probability $1-\mu$ OR failed transmission, viable embryo produced and paternal transmission of infection; probability $\mu\xi H$

The Punnett square displays the number of uninfected and infected reproductive females (top row), and probability of encountering each infected/uninfected male. The resulting cells display the probability of uninfected (U) and infected (I) eggs GIVEN the cross. To obtain the number of offspring each day, we multiply the values: row header value \times column header value \times cell values \times daily fecundity of infected (uninfected) reproductive female, b_I (b_U).

Table 4 Amplicon regions with the most informative SNPs and their characteristics for *Wolbachia* infections (wMel, wMelPop and wAlbB) in field-caught *Aedes aegypti* from Australia, Indonesia, Vietnam and Brazil

Region	Diagnostic	SNP (position)	Location	wMel	wMelPop	wAlbB
COI	G \rightarrow A	(531 bp)	Australia	COI ^a (87%)	COI ^a (87%)	ND4
ND5	T \rightarrow C	(352 bp)	Indonesia	COI	COI, primer 4	ND4
ND4	G \rightarrow A	(210 bp)	Vietnam	COI	COI, primer 4 ^b	ND4
Primer 4	G \rightarrow A	(295 bp)	Brazil	COI, ND5	COI, primer 4, ND5	ND4, ND5

Abbreviation: SNP, single-nucleotide polymorphism.

Diagnostic SNP type (for example, G \rightarrow A designates G to A transition) and bp position within the amplicon

^aCOI marker for wMel/wMelPop infection is 87% informative in Australian samples.

^bPrimer pair 4 requires consideration of at least one more SNP in addition to the SNP at 295 bp to fully differentiate samples from Vietnam.

Modelling the mitochondrial haplotype counts. We designated two mitochondrial haplotypes: α , the haplotype prevalent in uninfected individuals, and β , the haplotype prevalent in infected individuals. We assume that the two haplotypes are strictly neutral variants. We let $\alpha_{i,t}$ and $\beta_{i,t}$ be the proportion of Infected individuals at time t with haplotype α and β respectively. Similarly, we define $\alpha_{U,t}$ and $\beta_{U,t}$ as equivalent proportions for the Uninfected individuals. We let $I_{\alpha,t+1}$ and $I_{\beta,t+1}$ be the number of Infected adult females with haplotype α or β at $t+1$, and $I_{E\alpha,t+1}$ and $I_{E\beta,t+1}$ be the equivalent embryonic individuals. Replacing the letter I with U gives the designations for their Uninfected equivalents.

If we assume no paternal transmission of mitochondria (that is, offspring will always have only the mother's haplotype), the numbers of individuals with a given mitochondrial haplotype can be designated the same way as the number of individuals with or without *Wolbachia* infection (defined by Equations (1) and (4)). For example, we can replace $I_{\alpha,t+1}$ with $I_{\alpha,t+1}$ or $I_{\beta,t+1}$ to designate the number of Infected adult females with the mitochondrial haplotype α or β . Analogously, we can replace $U_{E,t+1}$ with $U_{E\alpha,t+1}$ or $U_{E\beta,t+1}$ to indicate the number of Uninfected Embryonic individuals with the mitochondrial haplotype α or β (see Supplementary Table S3 for all probability combinations of offspring haplotypes).

Generating scenarios for varying transmission parameters. We first considered the models mathematically and qualitatively to identify effects of maternal transmission leakage ($\mu > 0$), incomplete CI ($H > 0$) and immigration/emigration. We then considered known cases where *Wolbachia* successfully invaded *Aedes* populations (involving wMel releases) and where the infection did not establish (involving wMelPop releases). In these situations, most population parameters have been estimated, and we used this information to indicate expected haplotype frequencies when there is maternal transmission leakage, immigration/migration and/or incomplete CI. We did not include paternal transmission in our analyses because the phenomenon has not been clearly demonstrated in mosquitoes, but we discuss how it might influence results of the models.

We tested the power of mitochondrial variants to detect imperfect transmission events ($\mu > 0$) under different levels of CI by simulating a population with different infection and haplotype frequencies. We tested two methods for detecting maternal transmission: (1) the traditional approach (Turelli and Hoffmann, 1995) of field sampling of live females and their offspring before screening for *Wolbachia* infection (method 1)

and (2) the alternative approach of sampling field uninfected mosquitoes for mitochondrial haplotype frequency (method 2). The models were run in R3.1 (R Core Team, 2014).

RESULTS

Diagnostic markers for *Wolbachia* infection in *A. aegypti*

We identified one SNP in the mitochondrial COI region that differentiates the wMel- and wMelPop-infected haplotype from haplotypes found in uninfected field populations of *A. aegypti* (Table 4). The diagnostic SNP represents a G to A transition at the 531 bp position in the amplicon of the COI region. The *Wolbachia*-associated COI haplotype was absent from all investigated non-Australian mosquito populations (Supplementary Figure S1, see haplotype 8 in Supplementary Table S4), but was detected at low frequencies in uninfected mosquitoes from two Australian populations (8.3–13.2%). We did not find a diagnostic COI haplotype associated with the wAlbB infection

The region amplified by primer pair 4 contained a G to A transition at the 295 bp position that allowed differentiation of wMel- and wMelPop-infected mosquitoes from most non-Australian samples (Table 4; haplotype 1 versus others, Supplementary Table S5). Complete differentiation is achieved when one of position 235, 601 or 604 is considered in the case where position 295 shares the same base with the wMel- or wMelPop-infected mosquitoes (compare haplotypes 1 and 8 in Supplementary Table S5). The infection-associated SNP combination was detected in natural mosquito populations in Australia with frequencies ranging from 20 to 50% (Supplementary Figure S2).

In the ND4 region we found 15 haplotypes, one of which (G \rightarrow A at 210 bp) (Table 4) was fully diagnostic for the wAlbB infection in all investigated populations (Supplementary Figure S3, see haplotype 5 of Supplementary Table S6). Amplicon sequencing of the ND5, primer pair 1 and primer pair 6 regions each revealed one haplotype associated with all three *Wolbachia* infections in *A. aegypti*, but this haplotype was fully diagnostic only in the Brazilian samples

(Supplementary Figures S4–S6, see Supplementary Tables S7–S9 for haplotype combinations).

In summary, we found that *wMel* and *wMelPop* could be completely differentiated from the non-Australian populations with one *COI* SNP and a combination of at least two SNPs in primer pair 4 amplicons. The *wAlbB* infection can be completely differentiated from all investigated populations with only one *ND4* SNP (Table 4).

With ddRAD-seq we found 92 SNPs in 28 RAD loci that spanned 11 mitochondrial genes and these were present in at least 80% of individuals (Supplementary Table S10). All RAD loci were concatenated to form superhaplotypes with a final length of 2246 bp. We found 59 unique superhaplotypes in 257 individuals. Haplotype networks for the ddRAD and amplicon data sets were concordant. Out of 28 ddRAD loci, 15 covered parts of mitochondrial genes that were not analysed via amplicon sequencing (*ND2*, *COIII*, *ATP6*, *ND1* and *ND6*; Supplementary Table S10). However, we did not detect additional SNPs that would be fully diagnostic for *wMel* infection in Australia. Even though the infection-associated superhaplotype 1 did not appear in any of the overseas samples, it was found in 12.1% of the Australian samples (Figure 2).

Nuclear copies of the mitochondrial DNA sequences (NuMts) are present in the *A. aegypti* genome (Behura *et al.*, 2011) and may complicate genotype assignment. However, diagnostic SNPs that were found via amplicon sequencing did not exhibit any form of heteroplasmy or ambiguous base calls. Furthermore, RAD-seq-generated SNPs that spanned 11 mitochondrial genes supported the haplotype networks generated with the single locus data. We also did not detect premature stop codons in any of the haplotypes or superhaplotypes. Therefore, it is unlikely that our haplotype analyses were confounded by NuMts.

Wolbachia dynamics modelling

We defined a set of initial conditions as follows:

1. Haplotype β was at a higher frequency in infected than uninfected mosquitoes (100 vs 0–13% based on molecular data). Hence, we start with $\beta_{I,0} > \beta_{U,0}$ (that is, $\alpha_{I,0} < \alpha_{U,0}$).

2. The site of *Wolbachia* release and the neighbouring population (population 2) had the same initial uninfected haplotype frequency, that is, $\alpha_{U,0}(1) = \alpha_{U,t}(2)$.
3. The viability of eggs, δ_I and δ_U is seasonally dependent, particularly for the *wMelPop* infection. In the wet season, we assumed that all eggs, regardless of infection, have the same probability of being viable. Based on the average number of rainy days in Cairns, Queensland and viability data from Juliano *et al.* (2002), we estimated that viability would decrease to ~ 0.75 in uninfected eggs. For infected eggs, we considered the same viability (no fitness difference) and viability decreasing to 0.1 (as in *wMelPop*).
4. We assumed no difference in daily fecundity between infected and uninfected mosquitoes, $b_I = b_U = 0.3$ and no seasonal dependence. The value was chosen to correspond to survival of juveniles to reproductive age with a small cost for all infection types, $s_I = 0.85$ versus $s_U = 0.9$, such that $b_I s_I$ and $b_U s_U$ correspond to the values described by Turelli (2010).
5. The daily adult survival rate (v_U) was set to 0.85, and assumed to be constant throughout both wet and dry seasons (Hugo *et al.*, 2014). We considered two scenarios: (1) no effect of *Wolbachia* and (2) a much lower survival of 0.65 (corresponding to *wMelPop*) (Yeap *et al.*, 2014).
6. The juvenile development time was dependent on season, but not infection. We set the overall development time, $\tau = 19$ and 36 days for wet and dry season, respectively. Egg development and post-larval pre-reproductive period were $\omega = 3$ and 14 days and $\kappa = 6$ and 8 days, respectively. The increase in length of each period simulates time spent in quiescence (for eggs) during the dry season and/or reduction in average temperature.
7. Larval competition parameters were set to $a = 0.1$ and $c = 0.2$ to prevent the population from expanding beyond 10 000 individuals (Supplementary Figure S7).
8. We implemented augmentative releases of 10 000 infected individuals every 7 days from the start for 12 releases.
9. The two seasons, wet and dry season, were set to 183 days each.

We varied the maternal transmission leakage rate, μ , and the CI rate, $1-H$, arbitrarily. For immigration/migration rates, we chose

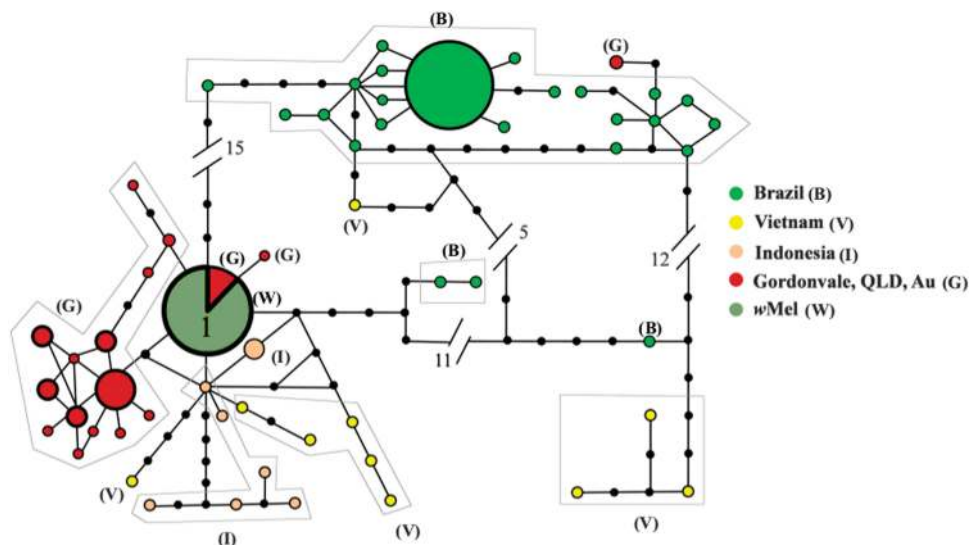


Figure 2 Network of RAD-seq superhaplotypes. Each nonsolid black coloured circle represents observed haplotype with greater circle size indicating greater number of individuals with that haplotype. Solid black circles represent a single base change and the interrupted line with numbers represents a larger number of base differences. Haplotype with number 1 is the haplotype associated with the *wMel* infection.

between an approximated value, $m=0.03\%$, of the population per generation (Endersby *et al.*, 2009), and an arbitrarily high rate, $m=6\%$.

- (a) *Maternal transmission leakage* ($\mu > 0$) by itself leads to decoupling of the *Wolbachia* infection status and associated mitochondrial variation, such that *Wolbachia*-associated mtDNA genetic background shows up in the uninfected fraction of the population (Figure 3a and Supplementary Text 1). If persisting indefinitely, the haplotype frequencies in uninfected mosquitoes will eventually become the same as those in infected mosquitoes in the population.
- (b) *Paternal transmission of Wolbachia* ($\xi > 0$) leads to the same result but working in the opposite direction: it causes haplotype frequencies in infected individuals to become the same as those in the uninfected mosquitoes of the population. The effects of both transmission parameters are limited by fitness of the infected/uninfected individuals (fecundity, b_I and b_U ; egg survival, δ_I and δ_U ; non-egg juvenile survival, s_I and s_U) and strength of CI ($1-H$) (Supplementary Text 1).
- (c) *Immigration/emigration* allows for two (or more) interacting populations to equilibrate their haplotype frequencies. As a result, these processes potentially reduce or reverse the effect of maternal transmission leakage on haplotype frequency in uninfected individuals (Figure 3b and Supplementary Text 1).
- (d) *Cytoplasmic incompatibility* does not affect haplotype frequency directly when there is no transmission leakage ($\mu=0$ and $\xi=0$). However, in the presence of leakage, the magnitude of CI could limit the effects of leakage on haplotype frequencies when immigration is present (Figure 3c and Supplementary Text 1). For example, high levels of CI (H close to zero) reduce the effect of maternal transmission leakage at high infection frequencies (p_I close to 1). As most mating pairs will be with infected males, any transmission leakage will be suppressed by CI, ultimately leaving only uninfected migrants if immigration occurs, or no

uninfected individuals if immigration is absent. High levels of CI also completely suppress the effect of paternal transmission of *Wolbachia* on haplotype frequencies in uninfected and infected individuals. However, when CI levels become too low (for example, $H=0.7$), *Wolbachia* invasion will drastically slow down, reducing the effect of transmission leakage (Figure 3c, see $H=0.7$).

Inferences from successful Wolbachia invasions. Successful *Wolbachia* invasions result in a stable frequency of *Wolbachia* infection in a population. Invasions of *wMel* in *A. aegypti* populations from Australia have led to stable infections at a frequency close to 1 (Hoffmann *et al.*, 2014). Here, we based fitness parameters on estimates obtained for the *wMel* infection in *A. aegypti*.

First, if an infection goes to fixation ($p_I=1$), it can easily be inferred that immigration is absent, and that maternal transmission of infection is perfect ($\mu=0$) and/or cytoplasmic incompatibility is complete ($H=0$) (Supplementary Text 2). Hence, any maternal transmission leakage can only be detected from haplotype frequencies during the invasion phase, that is, when uninfected individuals are still present.

Persistence of uninfected individuals in a stable infection implies that there is (1) immigration of uninfected mosquitoes into the invasion site ($m > 0$); and/or (2) imperfect maternal transmission of *Wolbachia* ($\mu > 0$) and incomplete CI ($H > 0$) as explained previously (Supplementary Text 2). Uninfected individuals have persisted in *A. aegypti* populations that were invaded by *Wolbachia* (Hoffmann *et al.*, 2014).

After invasion, if (1) the frequency of the infection-associated haplotype β significantly increases in uninfected individuals and is moving towards the value present in infected individuals, we can infer that maternal transmission leakage and incomplete CI are likely to be present (Figure 4a). Under this scenario, however, the presence of immigration cannot be inferred. On the other hand, if (2) haplotype β in uninfected individuals is at a higher frequency during the invasion phase than after invasion, it is likely that immigration coupled with almost complete CI ($H \approx 0$) have countered the effects of transmission leakage (Figure 4b). (3) If no significant difference in haplotype frequencies is observed throughout the invasion and post-invasion periods, maternal transmission is probably perfect ($\mu=0$) and immigration is present ($m > 0$), allowing uninfected individuals to persist. Under such a scenario we cannot make any inferences about CI.

Inferences from failed Wolbachia invasions. Here, we approximated fitness parameters based on known releases of *wMelPop* infections that failed to invade an *A. aegypti* population (Yeap *et al.*, 2014). When the infection fails to persist at high frequency, it is difficult to infer levels of CI and low/moderate levels of migration in the presence of maternal transmission leakage based on uninfected haplotype frequency (compare Figures 4c and d). Maternal transmission leakage will transform the haplotype frequencies of uninfected individuals as long as the infection is still present in the population. This change in haplotype frequency could still be detected even after the infection has been lost (Figure 4c). Thus, in this scenario, we would suggest first screening after releases are terminated as it would be redundant to screen samples during invasion to detect maternal transmission leakage. If the absence of maternal transmission leakage ($\mu=0$) is suspected, individuals from invasion period could then be screened to test for a lack of change in uninfected haplotype frequency.

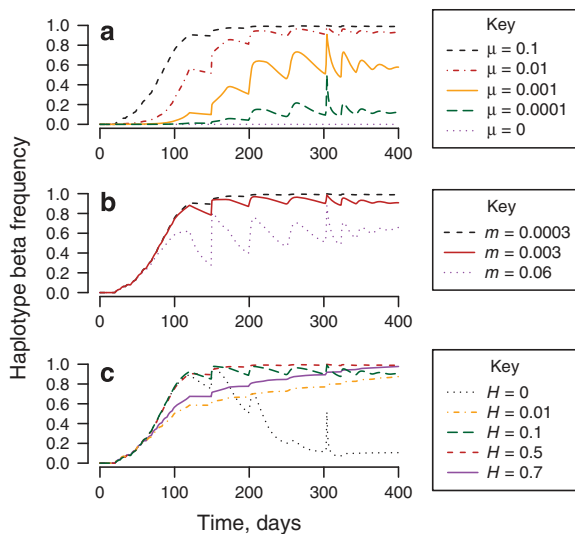


Figure 3 Frequency of haplotype β (infection-associated haplotype) in uninfecteds vs time in a modelled release. Unless stated, $\mu=0.1$, $m=0.0003$, $H=0.1$. (a) Comparison of different magnitude of maternal transmission leakage, $\mu=0, 0.0001, 0.001, 0.01$ and 0.1 . (b) Comparison of different magnitude of immigration rates, $m=0$. (c) Comparison of variable levels of incomplete CI in the presence of transmission leakage, $\mu > 0$, and immigration, $m > 0$ ($H=0, 0.01, 0.1, 0.5, 0.7$).

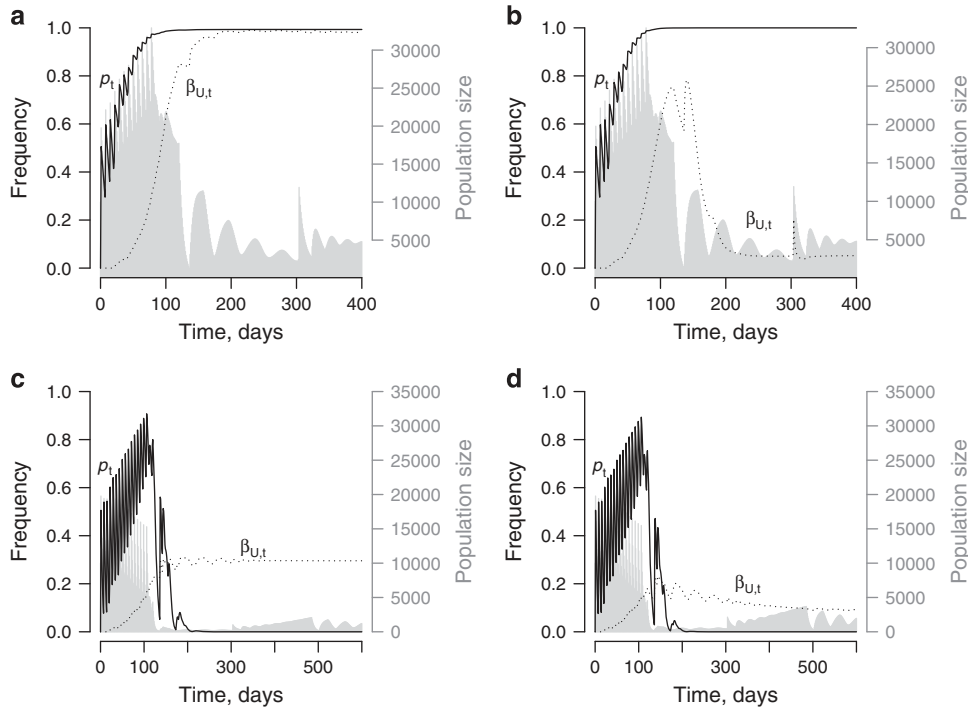


Figure 4 Plot of infection-associated haplotype frequency in uninfected: β , $\beta_{U,t}$, infection frequency, p_t and population size (shaded area). (a) Successful invasion with $\mu=0.05$, $m=0.0003$, $H=0.1$ (incomplete CI). (b) Successful invasion with $\mu=0.05$, $m=0.0003$ with incomplete CI, $H=0$. (c) Failed invasion with $\mu=0.05$, $m=0.0003$. (d) Release that fails to establish with $\mu=0.05$, $m=0.06$.

Workflow to detect maternal transmission leakage of *Wolbachia*

We provide a workflow that guides inferences about the processes underlying *Wolbachia* dynamics in host populations based on the analyses of infection and haplotype frequencies (Figure 5). The analyses are split into two sampling points: during the release phase and after releases (successful invasion or loss of infection). We also assess the power to detect maternal transmission leakage at these two sampling time points using the uninfected haplotype frequencies (method 2). We compare our method with the traditional approach (Turelli and Hoffmann, 1995) that assumes field sampling of infected gravid females to directly assess infection transmission to offspring (method 1).

First, analyses of mitochondrial haplotype distributions enable detection of the presence or absence of maternal transmission leakage for both sampling regimes (during and after the *Wolbachia* invasion). Sampling during the invasion phase is most informative when the infection frequency lies between 0.5 and 0.8. If the infection frequency (p_t) is too high, CI can hinder transmission leakage, and if p_t is too low, there are too few transmission leakage events to be detected.

For post-release sampling, samples can be collected when the infection frequency has stabilised or when it drops to zero. For the traditional method 1, we simulated the situation where 100 and 200 offspring are obtained from the field-caught infected females. For method 2, we simulated the situation where mosquitoes are sampled over 5 weeks (assuming a trapping rate of 0.5% of the population per week) and leakage was detected through the presence of an uninfected individual with an infection-associated haplotype (β). The screening protocols were simulated 100 000 times, assuming a low rate of immigration/emigration at a rate of $m=0.3\%$ of the population per generation corresponding to a relatively isolated population (cf, Hoffmann *et al.*, 2014).

With method 1, the ability to detect transmission leakage increases with leakage levels, but not with changing CI levels. This method is useful during and after an invasion, but cannot be used once an infection is lost. With method 2, relevant data on leakage can be obtained under all scenarios and the detection rate depends not only on the maternal transmission rate, but also on CI (Table 5). The two methods have comparable power in a situation where CI is not strong.

Case study

To highlight the utility of our approach, we considered the case of the *Wolbachia* infection *w*Ri and its recent invasion and spread through the populations of *D. simulans* in eastern Australia (Kriesner *et al.*, 2013). The infection was initially detected in California (Hoffmann *et al.*, 1986) where it was tightly associated with a particular mtDNA variant (Hale and Hoffmann, 1990) that then spread in populations alongside the *Wolbachia* infection (Turelli *et al.*, 1992). Based on the data presented by Kriesner *et al.* (2013), before the arrival of *w*Ri infection to Australia, there was one haplotype (haplotype A) present in eastern Australian populations. This haplotype was present in both uninfected individuals and individuals carrying the *w*Au infection that is not invasive through cytoplasmic incompatibility. In 2004, in New South Wales, Australia, before *w*Ri invading, New South Wales populations had a *w*Au frequency of 48.7%. By 2008, 7 sites had a new *w*Ri infection with a frequency of $7.4 \pm 4.7\%$; *w*Au infection was present with a frequency of 56.1% and uninfected individuals comprised 36.4% of the total sample. Moreover, mitochondrial haplotype R was now detected for the first time and had a frequency of $14.8 \pm 14.8\%$, higher than the frequency of *w*Ri because it was also detected in some uninfected individuals. By 2011, the frequency of *w*Ri had increased to $91.4 \pm 3.5\%$ and *w*Au was no longer detected. Moreover, both infected and uninfected individuals had haplotype

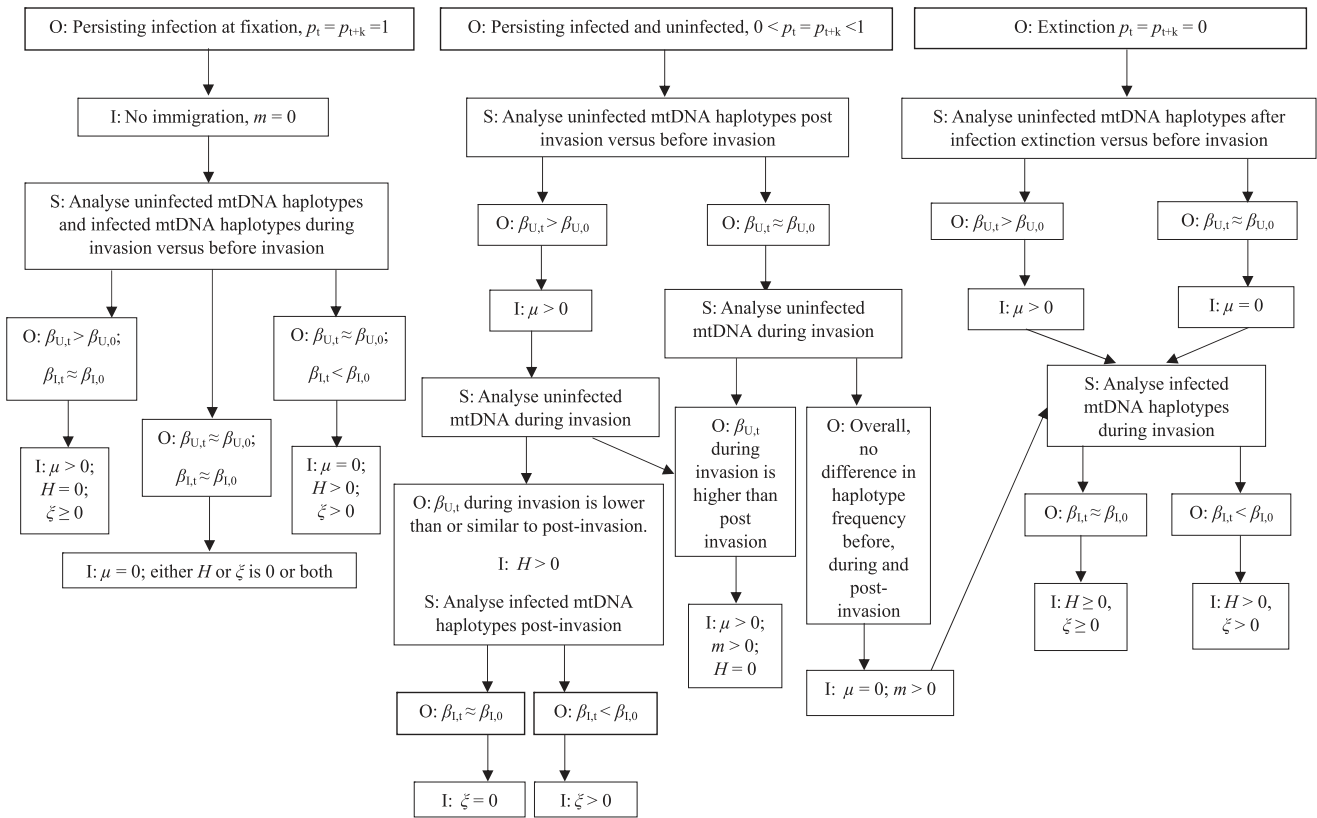


Figure 5 List of possible observations (O), their respective inferences on model parameters (I) and sampling strategy to make further inferences on model parameters (S) based on three possible *Wolbachia*-invasion outcomes: (1) fixed at 100%; (2) stable coexistence of *Wolbachia*-infected and uninfected; and (3) infection extinction. We were interested in identifying whether certain parameters, particularly the maternal transmission leakage rate (μ), incompatible hatch rate (H) and immigration rate (m), differed from 0 based on observations of infection-associated haplotype frequencies at some time, t , in uninfected, $\beta_{U,t}$ and infected, $\beta_{I,t}$ individuals. $\beta_{U,0}$ and $\beta_{I,0}$ specify frequencies at time $t=0$, before introduction of *Wolbachia*-infected individuals. For scenarios where parameters are listed as ' ≥ 0 ' or not mentioned, inference was not possible. We also included inferences on paternal transmission of *Wolbachia* rate (ζ), but this only applies when there is negligible paternal transmission of mitochondria. Stable infection frequency is denoted by $p_t = p_{t+k}$.

R, consistent with patterns in other populations outside Australia (Turelli *et al.*, 1992).

Applying the approach developed in the present study (Figure 5), the documented *wRi* invasion in Australia can be used to identify signatures of imperfect transmission and other processes. This is possible because the *D. simulans* population was sampled before invasion of *wRi* and the infection source population was known to be carrying a particular mtDNA variant. Based on Figure 5 (assuming we have no knowledge of laboratory estimates), it can be surmised that:

- (1) The increase in frequency of haplotype R (the invading haplotype) in uninfected individuals immediately implicates maternal transmission leakage. This haplotype was not previously detected in any Australian population. If migration was involved, we would have expected uninfected individuals to carry haplotype A.
- (2) Given that transmission leakage is present, we can infer incomplete CI because haplotype R has increased in frequency in uninfected individuals in New South Wales over time even when infection has reached high frequencies, instead of increasing initially and then dropping as the infection approaches high frequencies as expected under complete CI.
- (3) There is no evidence for a high incidence of paternal transmission because no *wRi*-infected flies with haplotype A were detected. However, it would be difficult to detect a low rate of paternal

transmission unless very large sample sizes were available from the invasion period.

DISCUSSION

We discovered mtDNA variants associated with the *wMel* and *wMelPop* *Wolbachia* infections that allow complete differentiation of *A. aegypti* from the release stock and the wild samples collected in Brazil, Indonesia and Vietnam. These mtDNA markers, however, are not fully diagnostic in Australian populations. High similarity between the infected colonies and the Australian populations is not surprising given that all infected samples originate from a single isofemale line which has the Australian genetic background (McMeniman *et al.*, 2008; McMeniman *et al.*, 2009; Walker *et al.*, 2011). We also detected a single diagnostic SNP that distinguishes the *wAlbB* infection from other *Wolbachia* strains and field samples of *A. aegypti*. The *wAlbB* was generated by the *Wolbachia* transfer from *A. albopictus* into the Waco *A. aegypti* strain that originated from Texas (Xi *et al.*, 2005). The diagnostic markers we discovered can now be used to generate a high-throughput SNP genotyping assay that could be run in parallel with the detection of the *Wolbachia* infection (Lee *et al.*, 2012). Such an assay would assist in ensuring successful *Wolbachia* invasions into the *A. aegypti* populations around the world in an effort to suppress dengue transmission.

Table 5 Qualitative rate of detection of maternal transmission leakage of *Wolbachia*

	During invasion phase				Post invasion (successful) ^a				Post release (noninvasion)			
	Method 1 ^b		Method 2 ^b		Method 1 ^b		Method 2 ^b		Method 1 ^b		Method 2 ^b	
Screened ^c	100	200	100	200	100	200	100	200	NA	NA	100	200
$\mu=0.05, H=0.5$	0.994	0.999	0.989	0.999	0.994	0.999	0.998	0.999	0	0	1.000	1.000
$\mu=0.05, H=0.1$	0.994	0.999	0.681	0.899	0.994	0.999	0.479	0.500	0	0	1.000	1.000
$\mu=0.05, H=0$	0.994	0.999	0.601	0.843	0.994	0.999	~0	~0	0	0	1.000	1.000
$\mu=0.01, H=0.5$	0.633	0.867	0.582	0.825	0.633	0.867	0.687	0.783	0	0	0.957	0.969
$\mu=0.01, H=0.1$	0.633	0.867	0.199	0.359	0.633	0.867	0.117	0.150	0	0	0.976	0.976
$\mu=0.01, H=0$	0.633	0.867	0.164	0.302	0.633	0.867	~0	~0	0	0	0.969	0.969
$\mu=0$	0	0	0	0	0	0	0	0	0	0	0	0

Abbreviation: NA, not available.

^aSuccessful post invasion implies infection persisting and/or reaching high infection frequencies. Otherwise the infection fails to establish.

^bMethod 1 involves sampling females and rearing them to obtain offspring. Females are then screened for *Wolbachia* and their offspring subsequently screened. The probabilities reported here are based on 100 000 simulated sampled females; only infected females are included in estimating the rate of imperfect transmission. Method 2 involves sampling and screening field individuals for infection. Those that are uninfected are screened for haplotype β (the haplotype not initially found in uninfected individuals). A total of 100 000 individuals were simulated and the proportion of replicates that had haplotype β at a frequency >0 are given.

^cThe number of infection offspring screened (method 1) or the number of uninfected individuals screened (method 2). The actual number of individuals screened in method 1 is far greater than under method 2 as the female parents are caught from the field and reared to obtain offspring before only retaining offspring of infected females. The actual number to screen for method 2 depends on the frequency of uninfected individuals.

Our modelling results highlight the extent to which the presence of maternal leakage leads to increased numbers of uninfected mosquitoes with the mtDNA haplotype associated with the infection (that is, haplotype β). The usual method for studying maternal transmission of *Wolbachia* in the field involves directly testing the *Wolbachia* infection status in the offspring of field-caught females that are infected (Hoffmann *et al.*, 1996, 1998). Although this approach can provide an estimate of transmission leakage, the major limitation is the substantial number of individuals that need to be tested. This is because useful information is obtained only from offspring of captured females that are infected. The mtDNA-based approach has several practical advantages in that live, field females are not required, and that the data can capture the average effects of leakage across time rather than only at the point when screening is undertaken. Although it might be less powerful when detecting low rates of maternal transmission leakage ($\mu < 0.05$) during the invasion phase, the mtDNA-based approach performs well after the release phase, particularly when there is no invasion or when some offspring hatch in incompatible crosses.

Based on the modelled power of detection, we propose that monitoring of mtDNA haplotype frequency in uninfected mosquitoes is a useful approach in understanding whether a failed or incomplete invasion is a result of maternal transmission leakage of *Wolbachia*. Nevertheless, estimating the maternal transmission leakage rate, μ , with this approach is not straightforward because of the number of variables that might affect such estimates. This is likely to require sampling of haplotypes from at least two time points.

Mitochondrial variation can also help in understanding the impact of other population processes such as migration patterns. Detection of immigrants is straightforward when high infection frequencies have been achieved. If we assume strong CI (H almost 0) or negligible paternal transmission of mitochondria, changes in the frequency of the haplotype associated with the infection in uninfected individuals after invasion provides a signature of immigration. Migration rates would still need to be directly estimated with approaches such as mark-release-recapture (see, for example, Marini *et al.*, 2010) and population genetic studies (cf, Endersby *et al.*, 2009; Endersby *et al.*, 2011; Rašić *et al.*, 2014a).

Monitoring of mitochondrial haplotype dynamics alone is not sufficient for inferring CI, but when coupled with maternal transmission of *Wolbachia* and other parameters, especially in the event of a successful invasion, it allows for the strength of CI to be inferred. We found that detecting maternal leakage of *Wolbachia* transmission via mtDNA haplotypes was affected by the strength of CI, and strong CI would have prevented any genetic material from the infected individuals leaking into the uninfected population via paternal transmission (cf, Hoffmann and Turelli, 2013). Strong CI allows re-establishment of the original haplotype frequency among uninfected individuals through immigration, as CI ensures the elimination of pre-existing uninfected individuals. However, the exact CI rate can only be inferred through observing hatch rate in gravid uninfected females captured during the release of infected mosquitoes.

In conclusion, we found sufficient differentiation between uninfected and infected haplotypes to allow qualitative detection of population parameters from mtDNA data during and after releases of *Wolbachia*-infected mosquitoes. Based on the scenarios presented, monitoring of haplotype frequencies in uninfected individuals should provide information on maternal transmission and the presence of immigrants in invaded populations. Our models could be applied not only to mosquito releases, but to any *Wolbachia* release program or temporal study of *Wolbachia* dynamics in natural populations, as long as there is mtDNA variation that differentiates infected and uninfected populations.

DATA ARCHIVING

Molecular data used in this paper and R codes for the models can be accessed via DRYAD with accession numbers DOI: doi:10.5061/dryad.3f355. Raw Illumina sequences from the ddRAD libraries are deposited in NCBI SRA under the accession numbers PRJNA241150 and PRJNA273913.

CONFLICT OF INTEREST

The authors declare no conflict of interest.

ACKNOWLEDGEMENTS

This work is funded by the program grants from the National Health and Medical Research Council, the Foundation for the National Institutes of Health through the Grand Challenges in Global Health Initiative of the Bill and Melinda

Gates Foundation and the Tahija Foundation. The work is also supported by a fellowship from the Australian Research Council Australia to AAH and an Alfred-Nicholas Fellowship to HLY. Nectar Research Cloud and VIC Node (University of Melbourne) provided the bioinformatics resources. We are grateful to a number of researchers for providing field collections of *A. aegypti*, including Rafael Maciel-de-Freitas and Renato Máspero (Fiocruz, Brazil) and Brian Montgomery (Monash University). Additional thanks to Rosanna Powell, Anjali Goundar, Jason K. Axford, Katrina Billington and Inaki Iturbe-Ormaetxe for laboratory samples and/or sample processing, Igor Filipovic for the bioinformatics support and Lucien Sankey for help with the figure design.

AUTHOR CONTRIBUTIONS

Planning of the experiment: HLY, NME, GR, SFL and AAH. Sample collection: EA and HLN. Performing the experiment: HLY. Running the analyses: HLY, GR and AAH. Writing the paper: HLY, GR, SFL, NME and AAH. All authors gave their final approval for publication.

- Armbruster P, Damsky WE, Giordano R, Birungi J, Munstermann LE, Conn JE (2003). Infection of new- and old-world *Aedes albopictus* (diptera: culicidae) by the intracellular parasite *Wolbachia*: implications for host mitochondrial DNA evolution. *J Med Entomol* **40**: 356–360.
- Behura SK, Lobo NF, Haas B, deBruyn B, Lovin DD, Shumway MF *et al.* (2011). Complete sequences of mitochondria genomes of *Aedes aegypti* and *Culex quinquefasciatus* and comparative analysis of mitochondrial DNA fragments inserted in the nuclear genomes. *Insect Biochem Mol Biol* **41**: 770–777.
- Bian GW, Xu Y, Lu P, Xie Y, Xi ZY (2010). The endosymbiotic bacterium *Wolbachia* induces resistance to dengue virus in *Aedes aegypti*. *PLoS Pathog* **6**: e1000833.
- Catchen J, Hohenlohe PA, Bassham S, Amores A, Cresko WA (2013). Stacks: an analysis tool set for population genomics. *Mol Ecol* **22**: 3124–3140.
- Clement M, Posada D, Crandall KA (2000). TCS: a computer program to estimate gene genealogies. *Mol Ecol* **9**: 1657–1659.
- da Costa-da-Silva AL, Capurro ML, Bracco JE (2005). Genetic lineages in the yellow fever mosquito *Aedes (Stegomyia) aegypti* (Diptera: Culicidae) from Peru. *Mem Inst Oswaldo Cruz* **100**: 539–544.
- Endersby NM, Hoffmann AA, White VL, Lowenstein S, Ritchie S, Johnson PH *et al.* (2009). Genetic structure of *Aedes aegypti* in Australia and Vietnam revealed by microsatellite and exon primed intron crossing markers suggests feasibility of local control options. *J Med Entomol* **46**: 1074–1083.
- Endersby NM, Hoffmann AA, White VL, Ritchie SA, Johnson PH, Weeks AR (2011). Changes in the genetic structure of *Aedes aegypti* (Diptera: Culicidae) populations in Queensland, Australia, across two seasons: implications for potential mosquito releases. *J Med Entomol* **48**: 999–1007.
- Focks DA, Daniels E, Haile DG, Keesling JE (1995). A simulation model of the epidemiology of urban dengue fever: literature analysis, model development, preliminary validation, and samples of simulation results. *Am J Trop Med Hyg* **53**: 489–506.
- Hale LR, Hoffmann AA (1990). Mitochondrial DNA polymorphism and cytoplasmic incompatibility in natural populations of *Drosophila simulans*. *Evolution* **44**: 1383–1386.
- Hancock PA, Sinkins SP, Godfray HJ (2011). Population dynamic models of the spread of *Wolbachia*. *Am Nat* **177**: 323–333.
- Hoffmann AA, Clancy D, Duncan J (1996). Naturally-occurring *Wolbachia* infection in *Drosophila simulans* that does not cause cytoplasmic incompatibility. *Heredity* **76**: 1–8.
- Hoffmann AA, Hercus M, Dagher H (1998). Population dynamics of the *Wolbachia* infection causing cytoplasmic incompatibility in *Drosophila melanogaster*. *Genetics* **148**: 221–231.
- Hoffmann AA, Iturbe-Ormaetxe I, Callahan AG, Phillips BL, Billington K, Axford JK *et al.* (2014). Stability of the wMel *Wolbachia* Infection following invasion into *Aedes aegypti* populations. *PLoS Negl Trop Dis* **8**: e3115.
- Hoffmann AA, Montgomery BL, Popovici J, Iturbe-Ormaetxe I, Johnson PH, Muzzi F *et al.* (2011). Successful establishment of *Wolbachia* in *Aedes* populations to suppress dengue transmission. *Nature* **476**: 454–457.
- Hoffmann AA, Ross PA, Rašić G (2015). *Wolbachia* strains for disease control: ecological and evolutionary considerations. *Evol Appl* **8**: 751–768.
- Hoffmann AA, Turelli M (1997). Cytoplasmic incompatibility in insects. In: O'Neill S, Hoffmann A, Werren J (eds). *Influential Passengers: Microbes and Invertebrate Reproduction*. Oxford University Press. pp 42–80.
- Hoffmann AA, Turelli M (2013). Facilitating *Wolbachia* introductions into mosquito populations through insecticide-resistance selection. *Proc R Soc B Biol Sci* **280**: 20130371.
- Hoffmann AA, Turelli M, Simmons GM (1986). Unidirectional incompatibility between populations of *Drosophila simulans*. *Evolution* **40**: 692–701.
- Hugo LE, Jeffery JAL, Trewin BJ, Wockner LF, Nguyen TY, Le NH *et al.* (2014). Adult survivorship of the dengue mosquito *Aedes aegypti* varies seasonally in central Vietnam. *PLoS Negl Trop Dis* **8**: e2669.
- Johnstone RA, Hurst GDD (1996). Maternally inherited male-killing microorganisms may confound interpretation of mitochondrial DNA variability. *Biol J Linn Soc* **58**: 453–470.
- Juliano SA, O'Meara GF, Morrill JR, Cutwa MM (2002). Desiccation and thermal tolerance of eggs and the coexistence of competing mosquitoes. *Oecologia* **130**: 458–469.
- Kearse M, Moir R, Wilson A, Stones-Havas S, Cheung M, Sturrock S *et al.* (2012). Geneious Basic: an integrated and extendable desktop software platform for the organization and analysis of sequence data. *Bioinformatics* **28**: 1647–1649.
- Kittayapong P, Baisley KJ, Baimai V, O'Neill SL (2000). Distribution and diversity of *Wolbachia* infections in southeast Asian mosquitoes (Diptera: Culicidae). *J Med Entomol* **37**: 340–345.
- Kriesner P, Hoffmann AA, Lee SF, Turelli M, Weeks AR (2013). Rapid sequential spread of two *Wolbachia* variants in *Drosophila simulans*. *PLoS Pathog* **9**: e1003607.
- Langmead B, Trapnell C, Pop M, Salzberg SL (2009). Ultrafast and memory-efficient alignment of short DNA sequences to the human genome. *Genome Biol* **10**: R25.
- Lee SF, White VL, Weeks AR, Hoffmann AA, Endersby NM (2012). High-throughput PCR assays to monitor *Wolbachia* infection in the dengue mosquito (*Aedes aegypti*) and *Drosophila simulans*. *Appl Environ Microbiol* **78**: 4740–4743.
- Lunt DH, Zhang DX, Szymura JM, Hewlitt OM (1996). The insect cytochrome oxidase I gene: evolutionary patterns and conserved primers for phylogenetic studies. *Insect Mol Biol* **5**: 153–165.
- Marini F, Caputo B, Pombi M, Tarsitani G, della Torre A (2010). Study of *Aedes albopictus* dispersal in Rome, Italy, using sticky traps in mark-release-recapture experiments. *Med Vet Entomol* **24**: 361–368.
- McMeniman CJ, Lane AM, Fong AWC, Voronin DA, Iturbe-Ormaetxe I, Yamada R *et al.* (2008). Host adaptation of a *Wolbachia* strain after long-term serial passage in mosquito cell lines. *Appl Environ Microbiol* **74**: 6963–6969.
- McMeniman CJ, Lane RV, Cass BN, Fong AWC, Sidhu M, Wang YF *et al.* (2009). Stable introduction of a life-shortening *Wolbachia* infection into the mosquito *Aedes aegypti*. *Science* **323**: 141–144.
- McMeniman CJ, O'Neill SL (2010a). A virulent *Wolbachia* infection decreases the viability of the dengue vector *Aedes aegypti* during periods of embryonic quiescence. *PLoS Negl Trop Dis* **4**: e748.
- McMeniman CJ, O'Neill SL (2010b). A virulent *Wolbachia* infection decreases the viability of the dengue vector *Aedes aegypti* during periods of embryonic quiescence. *PLoS Negl Trop Dis* **4**: e748.
- Moreira LA, Iturbe-Ormaetxe I, Jeffery JA, Lu GJ, Pyke AT, Hedges LM *et al.* (2009). A *Wolbachia* symbiont in *Aedes aegypti* limits infection with Dengue, Chikungunya, and Plasmodium. *Cell* **139**: 1268–1278.
- Mousson L, Dauga C, Garrigues T, Schaffner F, Vazeille M, Failloux AB (2005). Phylogeography of *Aedes (Stegomyia) aegypti* (L.) and *Aedes (Stegomyia) albopictus* (Skuse) (Diptera: Culicidae) based on mitochondrial DNA variations. *Genet Res* **86**: 1–11.
- R Core Team. (2014). *R: A Language and Environment for Statistical Computing*. R Foundation for Statistical Computing, Vienna, Austria. Available from <http://www.R-project.org/>
- Rašić G, Endersby NM, Williams C, Hoffmann AA (2014a). Using *Wolbachia*-based release for suppression of *Aedes* mosquitoes: insights from genetic data and population simulations. *Ecol Appl* **24**: 1226–1234.
- Rašić G, Filipović I, Weeks AR, Hoffmann AA (2014b). Genome-wide SNPs lead to strong signals of geographic structure and relatedness patterns in the major arbovirus vector, *Aedes aegypti*. *BMC Genomics* **15**: 275.
- Ross PA, Endersby NM, Yeap HL, Hoffmann AA (2014). Larval competition extends developmental time and decreases adult size of wMelPop *Wolbachia*-infected *Aedes aegypti*. *Am J Trop Med Hyg* **91**: 198–205.
- Schuler H, Bertheau C, Egan SP, Feder JL, Riegler M, Schlick-Steiner BC *et al.* (2013). Evidence for a recent horizontal transmission and spatial spread of *Wolbachia* from endemic *Rhagoletis cerasi* (Diptera: Tephritidae) to invasive *Rhagoletis cingulata* in Europe. *Mol Ecol* **22**: 4101–4111.
- Teacher AGF, Griffiths DJ (2011). HapStar: automated haplotype network layout and visualization. *Mol Ecol Resour* **11**: 151–153.
- Turelli M (2010). Cytoplasmic incompatibility in populations with overlapping generations. *Evolution* **64**: 232–241.
- Turelli M, Hoffmann AA (1991). Rapid spread of an inherited incompatibility factor in California *Drosophila*. *Nature* **353**: 440–442.
- Turelli M, Hoffmann AA (1995). Cytoplasmic incompatibility in *Drosophila-simulans* - dynamics and parameter estimates from natural-populations. *Genetics* **140**: 1319–1338.
- Turelli M, Hoffmann AA, McKechnie SW (1992). Dynamics of cytoplasmic incompatibility and mtDNA variation in natural *Drosophila simulans* populations. *Genetics* **132**: 713–723.
- Turley AP, Zalucki MP, O'Neill SL, McGraw EA (2013). Transinfected *Wolbachia* have minimal effects on male reproductive success in *Aedes aegypti*. *Parasit Vectors* **6**: 36.
- Walker T, Johnson PH, Moreira LA, Iturbe-Ormaetxe I, Frentiu FD, McMeniman CJ *et al.* (2011). The wMel *Wolbachia* strain blocks dengue and invades caged *Aedes aegypti* populations. *Nature* **476**: 450–453.
- Xi ZY, Khoo CCH, Dobson SL (2005). *Wolbachia* establishment and invasion in an *Aedes aegypti* laboratory population. *Science* **310**: 326–328.
- Yeap HL, Axford JK, Popovici J, Endersby NM, Iturbe-Ormaetxe I, Ritchie SA *et al.* (2014). Assessing quality of life-shortening *Wolbachia*-infected *Aedes aegypti* mosquitoes

- in the field based on capture rates and morphometric assessments. *Parasit Vectors* **7**: 58.
- Yeap HL, Endersby NM, Johnson PH, Ritchie SA, Hoffmann AA (2013). Body size and wing shape measurements as quality indicators of *Aedes aegypti* mosquitoes destined for field release. *Am J Trop Med Hyg* **89**: 78–92.
- Yeap HL, Mee P, Walker T, Weeks AR, O'Neill SL, Johnson P *et al.* (2011). Dynamics of the 'popcorn' *Wolbachia* infection in outbred *Aedes aegypti* informs prospects for mosquito vector control. *Genetics* **187**: 583–595.
- Yen JH, Barr AR (1971). New hypothesis of the cause of cytoplasmic incompatibility in *Culex pipiens* L. *Nature* **232**: 657–658.
- Zug R, Hammerstein P (2012). Still a host of hosts for *Wolbachia*: analysis of recent data suggests that 40% of terrestrial arthropod species are infected. *PLoS One* **7**: e38544.



This work is licensed under a Creative Commons Attribution-NonCommercial-NoDerivs 4.0 International License. The images or other third party material in this article are included in the article's Creative Commons license, unless indicated otherwise in the credit line; if the material is not included under the Creative Commons license, users will need to obtain permission from the license holder to reproduce the material. To view a copy of this license, visit <http://creativecommons.org/licenses/by-nc-nd/4.0/>

Supplementary Information accompanies this paper on Heredity website (<http://www.nature.com/hdy>)



Minerva Access is the Institutional Repository of The University of Melbourne

Author/s:

Yeap, HL;Rasic, G;Endersby-Harshman, NM;Lee, SF;Arguni, E;Le Nguyen, H;Hoffmann, AA

Title:

Mitochondrial DNA variants help monitor the dynamics of Wolbachia invasion into host populations

Date:

2016-03-01

Citation:

Yeap, H. L., Rasic, G., Endersby-Harshman, N. M., Lee, S. F., Arguni, E., Le Nguyen, H. & Hoffmann, A. A. (2016). Mitochondrial DNA variants help monitor the dynamics of Wolbachia invasion into host populations. *HEREDITY*, 116 (3), pp.265-276. <https://doi.org/10.1038/hdy.2015.97>.

Persistent Link:

<http://hdl.handle.net/11343/258403>

License:

[CC BY-NC-ND](#)