

*Mobile elements drive recombination hotspots in the core genome of *Staphylococcus aureus**

Article

Published Version

Creative Commons: Attribution 4.0 (CC-BY)

Open Access

Everitt, R. G., Didelot, X., Batty, E. M., Miller, R. R., Knox, K., Young, B. C., Bowden, R., Auton, A., Votintseva, A., Lerner-Svensson, H., Charlesworth, J., Golubchik, T., Ip, C. L.C., Godwin, H., Fung, R., Peto, T. E.A., Walker, A. S., Crook, D. W. and Wilson, D. J. (2014) Mobile elements drive recombination hotspots in the core genome of *Staphylococcus aureus*. *Nature Communications*, 5. 3956. ISSN 2041-1723 doi: <https://doi.org/10.1038/ncomms4956> Available at <https://centaur.reading.ac.uk/37676/>

It is advisable to refer to the publisher's version if you intend to cite from the work. See [Guidance on citing](#).

Published version at: <http://www.nature.com/ncomms/2014/140523/ncomms4956/full/ncomms4956.html>

To link to this article DOI: <http://dx.doi.org/10.1038/ncomms4956>

Publisher: Nature Publishing Group

All outputs in CentAUR are protected by Intellectual Property Rights law, including copyright law. Copyright and IPR is retained by the creators or other copyright holders. Terms and conditions for use of this material are defined in the [End User Agreement](#).

www.reading.ac.uk/centaur

CentAUR

Central Archive at the University of Reading

Reading's research outputs online

ARTICLE

Received 11 Feb 2014 | Accepted 24 Apr 2014 | Published 23 May 2014

DOI: 10.1038/ncomms4956

OPEN

Mobile elements drive recombination hotspots in the core genome of *Staphylococcus aureus*

Richard G. Everitt^{1,†}, Xavier Didelot^{2,†}, Elizabeth M. Batty^{2,3}, Ruth R. Miller¹, Kyle Knox⁴, Bernadette C. Young¹, Rory Bowden^{2,3}, Adam Auton³, Antonina Votintseva^{1,2}, Hanna Larner-Svensson^{1,3}, Jane Charlesworth¹, Tanya Golubchik^{1,2}, Camilla L.C. Ip^{2,3}, Heather Godwin⁵, Rowena Fung¹, Tim E.A. Peto¹, A. Sarah Walker¹, Derrick W. Crook¹ & Daniel J. Wilson^{1,3}

Horizontal gene transfer is an important driver of bacterial evolution, but genetic exchange in the core genome of clonal species, including the major pathogen *Staphylococcus aureus*, is incompletely understood. Here we reveal widespread homologous recombination in *S. aureus* at the species level, in contrast to its near-complete absence between closely related strains. We discover a patchwork of hotspots and coldspots at fine scales falling against a backdrop of broad-scale trends in rate variation. Over megabases, homoplasmy rates fluctuate 1.9-fold, peaking towards the origin-of-replication. Over kilobases, we find core recombination hotspots of up to 2.5-fold enrichment situated near fault lines in the genome associated with mobile elements. The strongest hotspots include regions flanking conjugative transposon ICE6013, the staphylococcal cassette chromosome (SCC) and genomic island vSa α . Mobile element-driven core genome transfer represents an opportunity for adaptation and challenges our understanding of the recombination landscape in predominantly clonal pathogens, with important implications for genotype-phenotype mapping.

¹Nuffield Department of Medicine, University of Oxford, John Radcliffe Hospital, Oxford OX3 9DU, UK. ²Department of Statistics, University of Oxford, 1 South Parks Road, Oxford OX1 3TG, UK. ³Wellcome Trust Centre for Human Genetics, Roosevelt Drive, Oxford OX3 7BN, UK. ⁴Department of Primary Care Health Sciences, University of Oxford, 23-38 Hythe Bridge Street, Oxford OX1 2ET, UK. ⁵Oxford University Hospitals National Health Service Trust, John Radcliffe Hospital, Oxford OX3 9DU, UK. †Present addresses: Department of Mathematics and Statistics, University of Reading, Reading RG6 6AX, UK (R.G.V.); Department of Infectious Disease Epidemiology, Imperial College, London SW7 2AZ, UK (X.D.). Correspondence and requests for materials should be addressed to D.J.W. (email: daniel.wilson@ndm.ox.ac.uk).

Bacteria are fundamentally clonal, reproducing by binary fission. The accessory genomes of bacteria are an important source of evolutionary novelty that facilitate rapid adaptation via horizontal gene transfer (HGT)^{1–3}. Yet adaptation in the core genome is also critical to long-term survival and short-term response to new selection pressures: resistance to many antibiotics is conferred by substitutions in highly conserved core genes including *gyrA* and *rpoB*^{4–6}. In the absence of homologous recombination mediated by HGT, adaptation in the core genome would be limited by the supply of new mutations and clonal interference⁷. Evidence for core genome transfer (CGT) has been reported in most studied bacteria^{8,9}. However, the presence of CGT in apparently untransformable bacteria, among them major pathogens including *Staphylococcus aureus*, remains a paradox, and the underlying mechanisms obscure^{10–12}.

Here we address the question of the frequency, distribution and local genomic context of HGT in the *S. aureus* core genome by examining signatures of genetic exchange among strains representative of species-level diversity, and we test whether the extreme rarity of CGT reported between highly related *S. aureus* strains^{13–18} applies species-wide. We discover a patchwork of hotspots and coldspots in the core genome driven by proximity to mobile elements against a backdrop of broad-scale trends in recombination rate variation that peak towards the origin-of-replication.

Results

Oxfordshire isolates encompass global *S. aureus* diversity.

S. aureus is a life-threatening hospital pathogen and major cause of early mortality worldwide, but it is also a common constituent of the human microbiome, colonizing the noses of around one in three healthy adults¹⁹. Co-colonization rates among distinct strains are around 7%, providing ample opportunity for genetic exchange²⁰. In 2009, we began a longitudinal carriage study of more than 1,100 asymptomatic adults in Oxfordshire, England, recruiting 360 nasal carriers for follow-up, in order to profile the natural reservoir of *S. aureus* colonizing humans^{21–23}.

We randomly selected 89 methicillin-sensitive *S. aureus* (MSSA) and five methicillin-resistant *S. aureus* (MRSA) for Illumina whole-genome sequencing, taking the first positive nasal sample per carrier, and we resequenced MRSA252, an invasive reference isolate from Oxford^{24,25} (Supplementary Fig. 1). We compared these 95 genomes with 15 reference genomes representing international strains (Australia, Japan, UK and USA), animal-associated strains (bovine, ovine and poultry), and historic strains (1943, 1952 and circa-1960)^{15,26–36}. A phylogeny based on 106,480 core biallelic polymorphisms (BiPs) shows the overarching relationships among the 110 genomes (Fig. 1a). Most isolates cluster into clonal complexes (CCs), differences between which dominate the phylogeny. Means of 0.13 and 7.8 BiP differences per kilobase were detected between samples of the same and different CC, respectively. The Oxfordshire isolates capture most of the species-level diversity. Hence, our collection combines global diversity and locally defined sampling, facilitating investigation of CGT throughout *S. aureus*.

CGT is pervasive at the species level. To identify evidence for CGT, we focused our attention on BiPs, reducing confounding between signals of genetic exchange and repeat/back mutation. We classified core BiPs as follows^{37–39}: autapomorphic (37,898 sites), sites in which the less frequent allele was observed in only one single genome; synapomorphic (34,218), sites compatible with a single substitution across the phylogeny; and homoplasious (34,364), sites requiring multiple substitutions across the tree. Autapomorphies are uninformative concerning genetic exchange,

whereas synapomorphies are consistent with unique mutation and homoplasies are consistent with homologous recombination, subject to the caveat that we expect repeat/back mutation to have contributed a modest number (circa 1,500).

We detected three classic signatures of homologous recombination^{39–41}, the first being a large excess of homoplasies. We identified 71,730 homoplasies (excess substitutions) across the 34,364 homoplasious BiPs. These homoplasies were particularly concentrated in Group 2 *S. aureus*, where they outnumbered synapomorphies more than threefold among some lineages (Fig. 1a). No other systematic differences between phylogenetic groups 1 and 2 have been identified^{42–44}. Excess homoplasies was far greater between CCs than within (Supplementary Fig. 2), revealing that extremely low within-CC recombination rates do not generalize to the species level. The relative substitution rate due to recombination versus mutation (*r/m*) was estimated at 0.43 by LDhat⁴⁵ and 0.83 (95% credible interval 0.67–1.1) by ClonalFrame⁴⁶, higher than previously thought^{9,14,42} (Supplementary Table 1). Second, we found support among significant minorities of BiPs for alternate, phylogenetically incongruent clades (Fig. 1b). Almost every alternate configuration of Group 1 CCs was observed to have some support. CC-239, an acknowledged CC-8/CC-30 recombinant⁴⁷, featured frequently among alternate groupings. Third, we observed a rapid decay of linkage disequilibrium (LD) with physical distance along the chromosome (Fig. 1c). Within 5 kb, LD decayed to the moderate residual levels observed between BiPs 1 Mb apart, this residual LD reflecting the strong structuring of the population into CCs. The scale of decay was consistent with mean DNA import lengths of 0.53 kb (LDhat) to 1.01 kb (ClonalFrame). Taken together, these classic signatures demonstrate frequent, widespread CGT during the long-term evolution of *S. aureus*.

The signatures of recombination are interrelated: accordingly, we observed a strong relationship between the number of homoplasies—that ranged from 0 to 10—and the strength of LD at core BiPs, having adjusted for allele frequency (Fig. 1d). We identified a similar relationship for gene presence/absence in the accessory genome, where the number of homoplasies ranged up to 35, reflecting the substantially higher rates of HGT (Supplementary Fig. 3). This relationship between homoplasies and LD allowed us to narrow our focus onto homoplasies in investigating genome-wide heterogeneity in CGT. We took as the relative positions of core BiPs those in MRSA252, supported by our observation that core gene synteny was conserved in all 110 genomes. This finding is helpful for investigating the influence of local genomic context on CGT.

Genomic context predicts fine and broad-scale trends in CGT.

Core genome homoplasies rates varied substantially, revealing a complex landscape of hot and cold regions (Fig. 2). The local homoplasies rate ranged from 0.20 to 3.68 based on a smoothing kernel with 1 kb bandwidth. We found a broad-scale trend towards greater homoplasies near the origin-of-replication. Against this trend, fine-scale variation manifesting as localized peaks of elevated homoplasies were scattered across the genome. We identified the hottest peak around 1,350 kb, the integration site of the ICE6013 conjugative transposon in the MRSA252 genome^{25,48}. Seven of the ten hottest regions were situated close to mobile elements or their insertion sites, including SCC and genomic island vSa α (Supplementary Table 2).

We systematically tested the influence of distance from origin, proximity to mobile elements and other local features on the number of homoplasies using negative binomial regression. After controlling for allele frequency, the first two of these were the

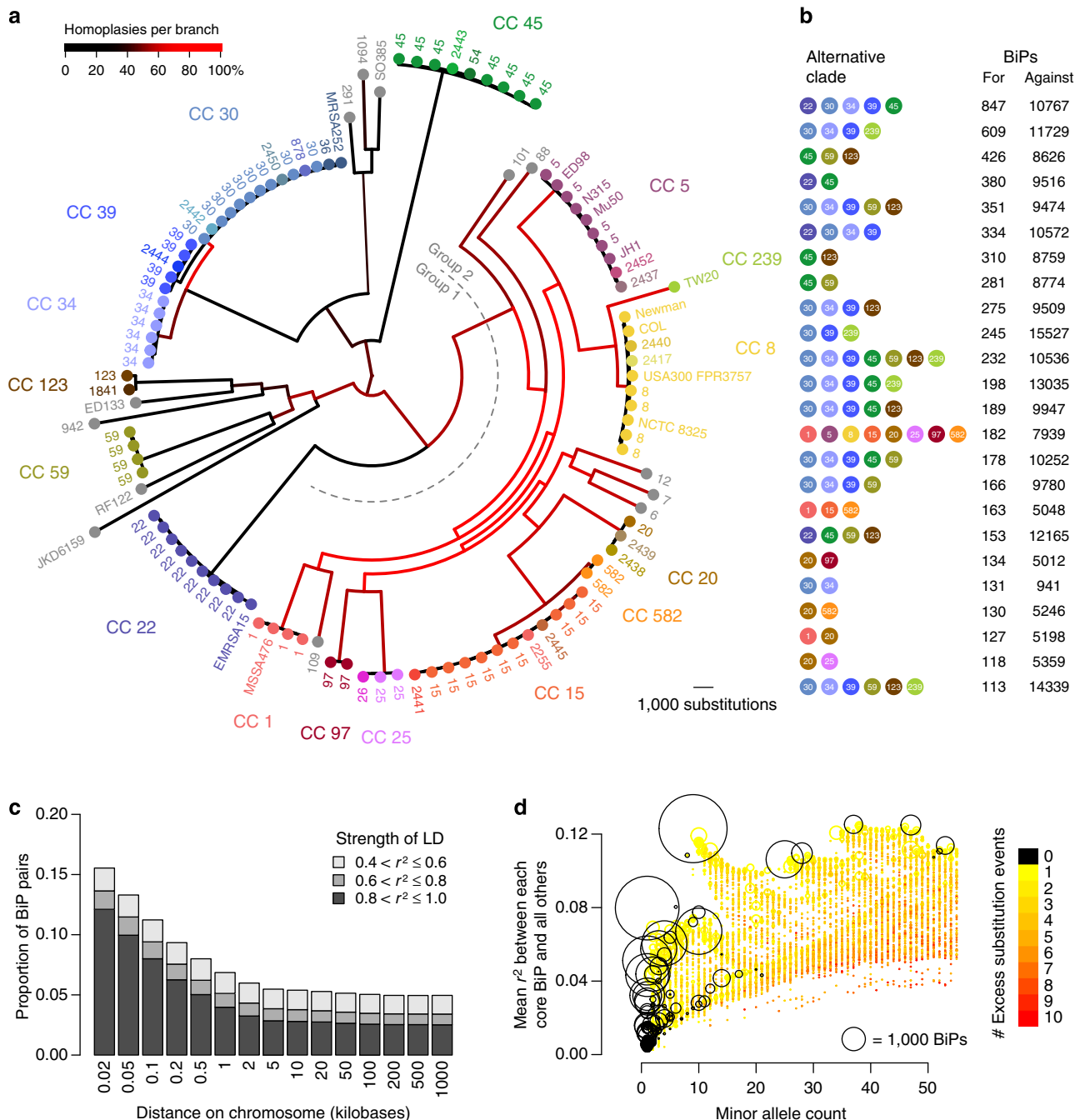


Figure 1 | Signatures of recombination in the *S. aureus* core genome. (a) Maximum likelihood phylogeny of 95 isolates from Oxfordshire, England and 15 reference isolates, based on 2,114,882 core invariant and biallelic sites. The reference genomes represent international strains (Australia: JKD6159; Japan: Mu50, N315; UK: EMRSA15, MSSA476, TW20; USA: JH1, USA300), animal-associated strains (bovine: RF122; ovine: ED133; poultry: ED98, swine: SO385), and historic strains (1943: NCTC 8325; 1952: Newman; 1960s: COL). Branches are colour coded by the proportion of homoplasious substitutions. Isolates are labelled by ST or reference genome and colour coded by clonal complex. Group 1 and group 2 *S. aureus*, as previously defined⁴², are indicated. (b) Alternative, phylogenetically incongruent, relationships among CCs supported by some core biallelic sites but not others. LD is quantified by r^2 , the squared correlation coefficient. (c) Decay in LD with increasing physical distance between pairs of core biallelic sites. LD and number of substitutions at core biallelic sites. Each circle represents all the biallelic sites sharing a particular phylogenetic pattern, with the area proportional to the number of sites with that pattern. Circles are colour coded by the number of substitution events reconstructed along the phylogeny by maximum likelihood at each site with that pattern. Black circles correspond to the sites consistent with a unique mutation on a single branch of the phylogeny, while non-black circles represent homoplasious BiPs. (d) Relationship between allele frequency, LD and number of substitutions at core biallelic sites. Each circle represents all the biallelic sites sharing a particular phylogenetic pattern, with the area proportional to the number of sites with that pattern. Circles are colour coded by the number of substitution events reconstructed along the phylogeny by maximum likelihood at each site with that pattern. Black circles correspond to the sites consistent with a unique mutation on a single branch of the phylogeny, while non-black circles represent homoplasious BiPs.

most highly significant predictors (Table 1). Over megabase scales, homoplasy rates varied 1.9-fold, decreasing steadily with distance from origin before recovering slightly near the terminus (Supplementary Figs 4 and 5). Over kilobase scales, homoplasy

was strongly associated with proximity to mobile elements. We estimated 2.5-fold and 1.9-fold enrichments in homoplasy surrounding the ICE6013 integration site in MRSA252 and genomic island vSa α , respectively (Supplementary Table 3). In

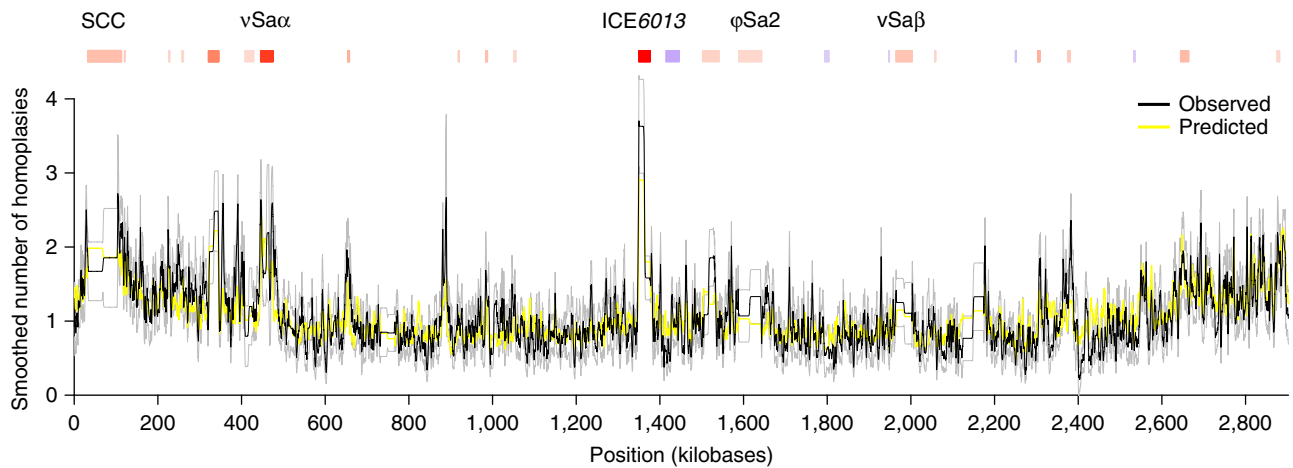


Figure 2 | Recombination rate heterogeneity in the *Staphylococcus aureus* core genome. Genome-wide variation in the number of homoplasies per BiP, based on an exponential smoothing kernel with 1 kb bandwidth. The smoothed estimate of the mean number of observed homoplasies (black line) is shown \pm two s.e. (grey lines). Above, mobile elements that are significantly associated ($P < 0.05$) with more (red) or fewer (blue) homoplasies are shown, with deeper shading for greater significance. The yellow line shows the smoothed estimate of the mean number of predicted homoplasies per BiP based on the regression model. The origin-of-replication occurs at position zero (extreme left and right side of the figure because of the circular nature of the chromosome).

Table 1 | Predictors of homoplasia rates.

Predictor	$-\log_{10}(P\text{-value})$
BiP allele frequency	5051
Distance from origin	245
Proximity to mobile elements	96
BiP type (synonymous, non-synonymous, and so on)	52
Local genetic diversity	33
Local GC content	26
COG category of nearby genes	10
BiP identity (A \rightarrow C, A \rightarrow G, etc.)	9
Local core density	6

Significance ($-\log_{10} P$ -value) was calculated by systematically dropping each predictor group from the full negative binomial regression model.

total, 20 mobile elements predicted locally elevated homoplasia, and five predicted reduced homoplasia. Reduced homoplasia was further associated with amino-acid substitutions, transversions, proximity to genes encoding translation machinery or signal transduction proteins, and high diversity, GC-poor and core-dense regions. Altogether, genomic context explained 44% of the variance in homoplasia at the kilobase scale, demonstrating the important modulatory effect of local features on CGT.

Hotspots of CGT are associated with ICE6013 and SCC. We examined in detail the strongest hotspot, associated with a 40 kb region spanning ICE6013 and a cluster of phage-like genes between 1,345–1,385 kb in MRSA252, some 60 kb from the terminus-of-replication. The elevated homoplasia rate was accompanied by a marked reduction in LD and excess of phylogenetic incongruity between core BiPs spanning the region, suggesting a history of recurrent recombination (Fig. 3). An alignment of 16 reference genomes revealed substantial variability in gene content. MRSA252 alone contained conjugative machinery, while vestigial elements in the other genomes variously encoded pseudogenized phage head proteins, transposases and reverse transcriptase. Flanking the region, the highly conserved *glnA* was the hottest core gene (Supplementary Table 4). The rapid return to background levels of homoplasia within 5 kb demonstrated the

diminishing influence of the mobile element with increasing physical distance.

Proximity to the origin-of-replication was strongly associated with excess homoplasia, particularly in the 750 kb immediately flanking the second strongest hotspot, found in SCC. The core BiPs surrounding SCC showed hallmarks of recurrent CGT, including low LD and phylogenetic incongruity (Fig. 4). In SCC, exemplified by the SCCmec element that confers methicillin resistance, gene content is extraordinarily variable. Homologous recombination over extended distances has been reported in the *ori*/SCC region: replacements of 244 kb in CC-34 (ref. 47) and 635 kb in CC-239 (ref. 31) span *ori*/SCC, the latter coinciding closely with the \sim 750 kb region of excess homoplasia that we identified (Fig. 2). The newly found SCC-associated hotspot represents the peak of this extended region of elevated homoplasia associated with large chromosomal replacements, indicating that mobile elements drive recurrent CGT over scales ranging from just several kilobases extending up to nearly 1 Mb.

Discussion

In summary, we found evidence of widespread homologous recombination in the core genome of *S. aureus*. Half of all informative sites were homoplasious, in contrast to the near-complete absence of homoplasia reported in whole-genome studies of highly related strains^{13–18}. Strains of *S. aureus* are young relative to the species, with 60-fold less diversity within versus between CCs. Our results demonstrate a dramatically increased impact of recombination at the species versus the strain level⁴⁹, indicating that the strong barriers to transformation in *S. aureus* do not prevent CGT over the long term. Cumulatively, rare events such as the transient emergence of hyperrecombinant lineages^{50,51}, or low-level activation of transformation by cryptic gene expression programs⁵², could contribute to this phenomenon. We discovered broad- and fine-scale trends in homoplasia across the core genome. Similar observations of megabase-scale trends towards increased homoplasia near the origin-of-replication in *Escherichia coli* were hypothesized to arise from greater DNA copy number near the origin during exponential growth, providing more substrate for homologous recombination⁵³. In *S. aureus*, the overlap between regions of

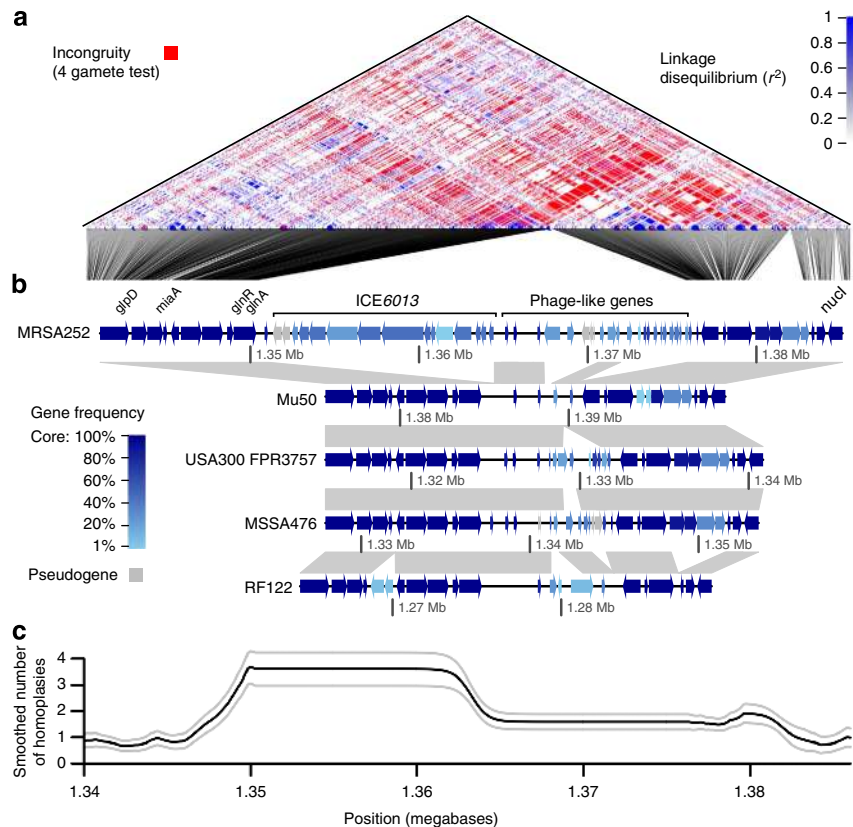


Figure 3 | Recombination hotspot associated with the ICE6013 conjugative transposon. (a) Pairwise LD plot. Red colouring indicates evidence for recombination between core BiPs, because they fail the four gamete test. Increasingly blue colouring indicates evidence against recombination, due to increasingly high r^2 . The positions of core BiPs in MRSA252 are indicated by corresponding black lines. (b) Alignment of five reference genomes in the region, with genes annotated. Dark grey bands between genomes indicate homology. Increasingly dark blue shading of genes indicates a higher frequency across the 110 genomes. Light grey shading indicates a pseudogene. (c) Smoothed number of observed homoplasies (black line), \pm two s.e. (grey lines). Whole-genome alignments were obtained from WebACT⁷¹ and plotted using genoPlotR⁷².

elevated homoplasy and previously reported large chromosomal replacements lead us to believe that broad-scale trends in homoplasy are attributable to macro-recombination, most likely mobile element driven^{31,47}. At fine scales, we discovered hotspots of CGT associated with proximity to mobile elements, including twofold enrichments within 1 kb of ICE6013 and SCC integration sites, suggesting a causal role for mobile elements in generating hotspots. The size of transferred material, estimated at 500–1,000 bp, provisionally suggests different mechanisms at fine versus broad scales.

Besides the possibility of cryptic transformation⁵², generalized phage transduction and conjugative transfer represent candidate mechanisms for CGT, because they can transfer core material via accidentally mispackaged DNA, cargo genes or through imprecise excision¹². Conjugative transposons have been shown to mobilize chromosomal DNA in *Enterococcus faecalis*⁵⁴, *Vibrio cholerae*⁵⁵, *Bacteroides thetaiotaomicron*⁵⁶, *Streptococcus agalactiae*⁵⁷ and *Clostridium difficile*⁵⁸. Our finding that the core region immediately flanking the conjugative transposon ICE6013 in MRSA252 is recombinationally active supports the proposition that ICE6013 could drive CGT via a mechanism similar to TnGBS2 activity in *Streptococcus agalactiae*⁴⁸. Like ICE6013, TnGBS2 integrates via a transposase rather than a site-specific recombinase, and TnGBS2 can mobilize chromosomal DNA through an Hfr-type mechanism that is capable of generating large chromosomal replacements, both in *cis* and in *trans*^{57,59}. This raises the possibility that ICE6013 could in fact be involved in broad-scale as well as fine-scale CGT.

Detecting genetic exchange in the core genome is important to understanding and monitoring the evolution of bacterial pathogens in response to selection pressures such as changing antibiotic usage. The discovery of a previously unknown landscape of hotspots in the core genome of a predominantly clonal bacterium casts new light on the prospects for genome-wide association studies, because unexpected levels of recombination improve the chances of finely mapping important phenotypes including virulence to specific loci in these important pathogens.

Methods

Isolate collection and sequencing. We surveyed asymptomatic nasal carriage in 1,123 adults attending general practices in Oxfordshire, England, 2009–2010 (refs 21–23). Informed consent was obtained from all participants, and ethical approval for the study was obtained from the Oxfordshire B Oxfordshire Research Ethics Committee (reference number 08/H0605/102). We selected a single colony for sequencing from the first positive nasal swab sampled from 94 carriers. Each nasal swab culture had been prepared and stored in glycerol. We incubated an inoculum of the glycerol stock on SASElect agar (Bio-Rad) overnight at 37 °C, then picked a single colony, streaked it onto Columbia blood agar and incubated it overnight at 37 °C, using a previously described protocol²¹. We grew one colony each from 89 randomly chosen MSSA carriers and five MRSA carriers, plus the clonal complex (CC)-30 reference isolate MRSA252 (ref. 25). Our sampling represents an enrichment of MRSA isolates compared with the overall frequency of 2.5% in the carriage study. For validation, we sequenced twice DNA extracted from eight of the colonies including MRSA252 by splitting the eight DNA extracts into two equal portions. In total, 103 genomes were sequenced at the Wellcome Trust Centre for Human Genetics, Oxford, using a combination of Illumina GAIIX and HiSeq 2000 with 96-fold multiplexing, paired-end reads of length of 99 or 101 bp each, insert sizes of 200 bp and mean depth 179 reads.

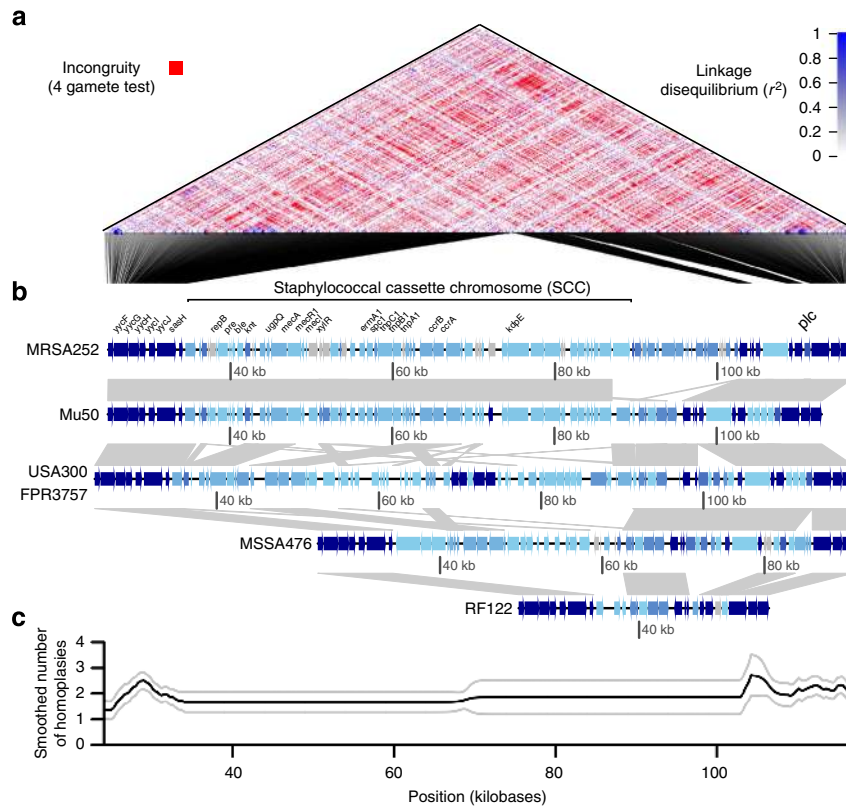


Figure 4 | Recombination hotspot associated with the SCC. (a) Pairwise LD plot. Red colouring indicates evidence for recombination between core BiPs, because they fail the four gamete test. Increasingly blue colouring indicates evidence against recombination, due to increasingly high r^2 . The positions of core BiPs in MRSA252 are indicated by corresponding black lines. (b) Alignment of five reference genomes in the region, with genes annotated. Dark grey bands between genomes indicate homology. Increasingly dark blue shading of genes indicates a higher frequency across the 110 genomes. Light grey shading indicates a pseudogene. (c) Smoothed number of observed homoplasies (black line), \pm two s.e. (grey lines). Whole-genome alignments were obtained from WebACT⁷¹ and plotted using genoPlotR⁷².

Genome mapping and base calling. We used Stampy⁶⁰ with no BWA pre-mapping and an expected substitution rate of 0.01 to map each genome against the MRSA252 reference. A mean of 95.6% of reads mapped to MRSA252. We called bases using the SAMtools v0.1.18 mpileup command⁶¹ with options '-E -M0 -Q30 -q30 -o40 -e20 -h100 -m2 -F0.002 -g -D -S' and the bcftools v0.1.17-dev view command with options '-c -g -b -A -L -t0.001 -i-1 -p0.5 -Pfull'. We masked calls that failed to meet the following criteria: at least five reads, at least one read in each direction, homozygous under a diploid model, at least 75% of reads supporting the call. Repetitive regions, defined by BLASTing the reference genome against itself and comprising 5.9% of the genome, were also masked. Following filtering, the mean proportion of the reference genome that we called by mapping was 86.4%. Out of 40,429,898 bases called independently across eight pairs of replicate genomes, there were no discrepancies.

Pan genome. We constructed a database of the *S. aureus* pan genome from the coding sequence annotations of 16 Sanger-sequenced reference genomes. Coding sequences were appended sequentially to the database in the following order: MRSA252 (Genbank accession number BX571856.1), MSSA476 (BX571857.1), COL (CP000046.1), NCTC 8325 (CP000253.1), Mu50 (BA000017.4), N315 (BA000018.3), USA300_FPR3757 (CP000255.1), JH1 (CP000736.1), Newman (AP009351.1), TW20 (FN433596.1), S0385 (AM990992.1), JKD6159 (CP002114.2), RF122 (AJ938182.1), ED133 (CP001996.1), ED98 (CP001781.1), EMRSA15 (HE681097.1)^{15,25–36}. Coding sequences that exhibited homology to other sequences already in the database, defined as 50% or greater identity in a tblastx query, were not added but noted as homologues.

Genome assembly. We used Velvet⁶² to assemble reads into contigs *de novo* for each newly sequenced genome, with hash length chosen to optimize $n50$, yielding an average of 130.5 contigs per genome. We determined the presence or absence of the genes in the pan genome via a tblastx query with minimum 70% identity threshold. We identified the *S. aureus* core genome from the coding sequences that were present in all 94 carriage and 16 reference genomes.

Synteny of the core genome. We assessed the synteny of the core genome by searching for anomalies in the expected ordering and orientation of successive core genes within contigs obtained from the Velvet assemblies of the 103 Illumina-sequenced genomes. Out of circa 200,000 pairs of successive core genes, we found 116 anomalies. Detailed inspection of mate pairs revealed that all were Velvet misassemblies. We also confirmed the conservation of core gene order and orientation in the 16 Sanger-sequenced reference genomes⁴⁹.

Identification of core BiPs. We defined core sites to be the 2,114,882 positions that mapped to MRSA252 and were unambiguously called in all 103 Illumina-sequenced genomes. Among those, we identified 106,480 core BiPs, 3,368 core triallelic polymorphisms and 66 core tetraallelic polymorphisms. We also identified 71,255, 4,012 and 125 non-core biallelic, triallelic and tetraallelic polymorphisms, respectively.

Phylogenetic reconstruction. We characterized the evolutionary relationships between genomes by building a maximum likelihood tree using PhyML (version 3.0)⁶³ assuming a single substitution rate under the HKY85 model and employing a combination of NNI and SPR moves in the search (options '-b 0 -v 0 -c 1 -s BEST'). We intentionally fitted a model without rate heterogeneity to ensure substitutions at different sites contributed equally to branch lengths. The maximum likelihood tree topology was robust to fitting a more complex GTR model with a proportion of invariant sites and gamma rate heterogeneity with four classes (options '-m GTR -b 0 -v e -c 4 -s BEST'). We analysed core BiPs and core invariant sites, with all non-core sites taken as invariant and identical to MRSA252. The PhyML tree was consistent with, but more fully resolved than, the 50% consensus tree constructed by ClonalFrame⁴⁶ using the same data.

Expected number of homoplasies caused by repeat/back mutation. We estimated the number of homoplasious BiPs that would be expected due to repeat or back mutation even in the absence of homologous recombination in two ways. (i) Using the substitution rate estimated by PhyML, we calculated the number of sites expected to experience two substitutions, offset by the probability that the second

mutation did not generate a third allele, giving 1,480 homoplasious BiPs. (ii) Taking the observed number of triallelic sites, we calculated the expected number of sites that would also have experienced two substitutions, but the second mutation did not generate a third allele, giving 1,684 homoplasious BiPs.

Recombination rate estimation. We estimated recombination rate parameters, including the relative substitution rate due to recombination versus mutation (r/m) using LDhat⁴⁵ and ClonalFrame⁴⁶. In the ClonalFrame analysis, we ran 20,000 iterations of burn-in and 20,000 iterations of sampling, under default priors, and analysing 50% of SNPs to improve computation time. In the LDhat analysis, we maximized the composite likelihood over a grid of values of γ and t (which we refer to as $\rho\tau$ and τ , respectively), focusing on the ranges 0–1.2 and 400–800, respectively following a wider initial search. We did not use ClonalFrame more widely because we observed that it did not detect recombination at a large proportion of sites where homoplasies were present.

Detecting homoplasy. We estimated the number of substitution events at every core site across the PhyML tree using maximum likelihood ancestral state reconstruction⁶⁴. For calculating homoplasy rates per branch of the PhyML tree, we downweighted each potential homoplasy by the probability that it was, in fact, the original mutation at that site. For this purpose, we considered each substitution at a site equally likely to have been the original mutation, rather than a homoplasy. A limitation of approaches such as ours that exploit homoplasy or genome mosaicism to detect recombination is that they rely on sampling descendants of both the recipient and donor lineage. An alternative method, but which also exploits this signal, has recently been developed⁶⁵.

Smoothed estimates of local homoplasy rate. We calculated a smoothed estimate of the homoplasy rate on an equally spaced grid of points every 50 bp throughout the reference genome as

$$\hat{\lambda}_i = \sum_j w_{ij} R_j / \sum_j w_{ij}, \quad (1)$$

where R_j is the number of excess substitution events (that is, homoplasies) detected at informative BiP j , the summation being over all synapomorphic and homoplasious BiPs, and

$$w_{ij} = \exp(-|d_{ij}|/1000) \quad (2)$$

is the weighting function, designed to detect variation at the kilobase scale, where d_{ij} is the physical distance between the positions of grid point i and BiP j in MRSA252. We calculated the standard error similarly as

$$\text{s.e.}(\hat{\lambda}_i) = \sqrt{\hat{\sigma}_i^2 \sum_j w_{ij}^2 / \left(\sum_j w_{ij}\right)^2}, \quad (3)$$

where

$$\hat{\sigma}_i^2 = \sum_j w_{ij} (R_j - \hat{\lambda}_i)^2 / \sum_j w_{ij}. \quad (4)$$

Regions with significantly increased or reduced recombination relative to the genome-wide average, \bar{R} , were ranked via a Z -score, defined at position i as

$$Z_i = (\hat{\lambda}_i - \bar{R}) / \text{s.e.}(\hat{\lambda}_i). \quad (5)$$

The behaviour of this smoothed estimate is such that the homoplasy rate (and s.e. and Z -score) at each point i draws on information from all BiPs, but downweights the influence of BiPs as physical distance between the positions of grid point i and BiP j increase. The strength of the weighting changes exponentially with physical distance between grid point i and BiP j . The influence of the 1 kb scale is such that if BiPs were evenly spaced every 30 bp, the total weight of BiPs within 1 and 6 kb, respectively would be 0.40 and 0.95. However, in regions where BiP density is low, more distant BiPs can contribute substantially. Smoothed homoplasy rates and LD plots for the entire genome, annotated by gene, are provided in Supplementary Data 1 and 2.

Annotation of mobile elements. To identify the positions of mobile elements across the genomes, we used two approaches. Using blastn, we first collated sequences of known *S. aureus* mobile elements of different type (genomic island, integrated plasmid, prophage, SAPI, SCC, transposon) and searched for similar sequences in all the Oxfordshire isolates, attempting to allocate the type where possible^{66,67}. We recorded the positions of flanking core BiPs for each. The accession numbers of the sequences used in blastn are given in Supplementary Table 5, along with the element-specific thresholds. Different approaches were taken for different elements: phages and SaPIs were located by blasting for integrase genes; SCC by blasting for genes in the *ccr* and *mec* complexes; transposons and plasmids by blasting for the whole element. We established thresholds by training the blastn queries on the published reference sequences, and the resequenced MRSA252 replicates. Lower thresholds were required when

blasting for whole elements, which were often split across contigs, in comparison with the thresholds required when blasting for single genes.

We also developed an alternate method that exploits variable core BiP distance (VCBD)—that is, variability in the distance between adjacent core BiPs—to detect evidence of ancestral mobile activity. We identified the positions of core BiPs among the Velvet contigs by aligning them to the MRSA252 reference genome using the Mauve contig mover⁶⁸. We calculated the variance in inter-BiP distance between adjacent BiPs on the same Velvet contig (or closed chromosome in the case of reference genomes) and divided by the mean distance between adjacent BiPs on the same contig to obtain a standardized variance. Applying as a threshold a standardized variance of 400 or above, we found 47 out of 65 known mobile elements, and 36 other regions of mobile activity (Supplementary Fig. 6). We manually curated all BLAST and VCBD hits to obtain a final set of 70 non-overlapping, annotated mobile elements (Supplementary Table 6).

Regression analysis. To investigate the role of local genomic context in recombination rate heterogeneity, we analysed the number of homoplasies at informative BiPs using a negative binomial regression via the glm.nb command in the R statistical package⁶⁹. We used the negative binomial regression because it can account for non-independence in the genome through the overdispersion parameter θ . We investigated the following covariates; at the individual BiP level: minor allele frequency, identity of major and minor alleles, mutation type (intergenic, synonymous, non-synonymous, read-through or nonsense), distance from the origin; as 1 kb moving averages: core region density, core region diversity, GC content; as 1 kb overlapping windows: the presence of genes in the MRSA252 reference genome encoding proteins (broken down by COG category⁷⁰) and RNA (ribosomal RNA, transfer RNA or miscellaneous), and the presence of mobile elements identified as above (genomic island, integrated plasmid, prophage, SAPI, SCC, transposon and unclassified). We defined core region density as the local proportion of sites defined as core, which we identified above. We defined core region diversity to be the local proportion of core sites exhibiting a pairwise nucleotide difference, taken as a mean over all pairs of genomes. We assessed significance by dropping covariates or groups of covariates from the model, keeping the θ parameter fixed. We measured final goodness-of-fit by calculating R^2 , the squared correlation between mean observed and expected number of recombination events in non-overlapping 1 kb intervals. Details of all core BiPs, observed and predicted homoplasy and the predictors used for regression are provided in Supplementary Data 3.

Poisson test. To rank individual genes for evidence of increased or reduced recombination irrespective of genomic context, we performed gene-by-gene Poisson tests for a significant difference in the number of recombination events at core BiPs compared with the genome-wide average, \bar{R} , using the poisson.test command in R.

Robustness to phylogenetic uncertainty. To test for robustness to uncertainty in the phylogeny, we conducted 100 bootstrap replicates as follows: we resampled the core invariant and biallelic sites and reconstructed the phylogeny using PhyML (options -b 100 -v 0 -c 1 -s BEST). We re-estimated the number of substitution events and homoplasies per site using maximum likelihood ancestral state reconstruction. We recalculated a smoothed estimate of genome-wide variation in homoplasy rate, and we re-fitted the negative binomial regression model to investigate the role of local genomic context on homoplasy rate variation. Supplementary Fig. 7 shows the robustness of the results to this procedure.

References

- Ochman, H., Lawrence, J. G. & Groisman, E. A. Lateral gene transfer and the nature of bacterial innovation. *Nature* **405**, 299–304 (2000).
- Fraser, C., Hanage, W. P. & Spratt, B. G. Recombination and the nature of bacterial speciation. *Science* **315**, 476–480 (2007).
- Croll, D. & McDonald, B. A. The accessory genome as a cradle for adaptive evolution in pathogens. *PLoS Pathog.* **8**, e1002608 (2012).
- Wright, G. D. The antibiotic resistome: the nexus of chemical and genetic diversity. *Nat. Rev. Microbiol.* **5**, 175–186 (2007).
- MacLean, R. C., Hall, A. R., Perron, G. G. & Buckling, A. The population genetics of antibiotic resistance: integrating molecular mechanisms and treatment contexts. *Nat. Rev. Genet.* **11**, 405–414 (2010).
- Gordon, N. C. *et al.* Prediction of *Staphylococcus aureus* antimicrobial resistance from whole genome sequencing. *J. Clin. Microbiol.* **52**, 1182–1191 (2014).
- Gerrish, P. J. & Lenski, R. E. The fate of competing beneficial mutations in an asexual population. *Genetica* **102/103**, 127–144 (1998).
- Pérez-Losada, M. *et al.* Population genetics of microbial pathogens estimated from multilocus sequence typing (MLST) data. *Infect. Genet. Evol.* **6**, 97–112 (2006).
- Vos, M. & Didelot, X. A comparison of homologous recombination rates in bacteria and archaea. *ISME J.* **3**, 199–208 (2009).

10. Thomas, C. M. & Nielsen, K. M. Mechanisms of, and barriers to, horizontal gene transfer between bacteria. *Nat. Rev. Microbiol.* **3**, 711–721 (2005).
11. Monk, I. R., Shah, I. M., Xu, M., Tan, M.-W. & Foster, T. J. Transforming the untransformable: application of direct transformation to manipulate genetically *Staphylococcus aureus* and *Staphylococcus epidermidis*. *mBio* **3**, e00277–e00311 (2012).
12. Lindsay, J. A. & Holden, M. T. G. Understanding the rise and fall of the superbug: investigation of the evolution and genomic variation of *Staphylococcus aureus*. *Funct. Integr. Genomics* **6**, 186–201 (2006).
13. Harris, S. R. *et al.* Evolution of MRSA during hospital transmission and intercontinental spread. *Science* **327**, 469–474 (2010).
14. Castillo-Ramirez, S. *et al.* Phylogeographic variation in recombination rates within a global clone of methicillin-resistant *Staphylococcus aureus*. *Genome Biol.* **13**, R126 (2012).
15. Holden, M. T. *et al.* A genomic portrait of the emergence, evolution, and global spread of a methicillin-resistant *Staphylococcus aureus* pandemic. *Genome Res.* **23**, 653–664 (2013).
16. Strommenger, B. *et al.* Evolution of methicillin-resistant *Staphylococcus aureus* towards increasing resistance. *J. Antimicrob. Chemother.* **69**, 616–622 (2013).
17. Kurt, K. *et al.* Subpopulations of *Staphylococcus aureus* clonal complex 21 are associated with distinct clinical entities. *PLoS ONE* **8**, e58155 (2013).
18. Miller, R. R. *et al.* Healthcare-associated outbreak of methicillin-resistant *Staphylococcus aureus* bacteraemia: role of a cryptic variant of an epidemic clone. *J. Hosp. Infect.* **86**, 83–89 (2014).
19. Wertheim, H. F. *et al.* The role of nasal carriage in *Staphylococcus aureus* infections. *Lancet Infect. Dis.* **5**, 751–762 (2005).
20. Cespedes, C. *et al.* The clonality of *Staphylococcus aureus* nasal carriage. *J. Infect. Dis.* **191**, 444–452 (2005).
21. Young, B. C. *et al.* Evolutionary dynamics of *Staphylococcus aureus* during progression from carriage to disease. *Proc. Natl Acad. Sci. USA* **109**, 4450–4455 (2012).
22. Golubchik, T. *et al.* Within-host evolution of *Staphylococcus aureus* during asymptomatic carriage. *PLoS ONE* **8**, e61319 (2013).
23. Miller, R. R. *et al.* Dynamics of acquisition and loss of carriage of *Staphylococcus aureus* strains in the community: the effect of clonal complex. *J. Infect.* **68**, 426–439 (2014).
24. Enright, M. C. *et al.* Multilocus sequence typing for characterization of methicillin-resistant and methicillin-susceptible clones of *Staphylococcus aureus*. *J. Clin. Microbiol.* **38**, 1008–1015 (2000).
25. Holden, M. T. G. *et al.* Complete genomes of two clinical *Staphylococcus aureus* strains: evidence for the rapid evolution of virulence and drug resistance. *Proc. Natl Acad. Sci. USA* **101**, 9786–9791 (2004).
26. Gill, S. R. *et al.* Insights on evolution of virulence and resistance from the complete genome analysis of an early methicillin-resistant *Staphylococcus aureus* strain and a biofilm-producing methicillin-resistant *Staphylococcus epidermidis* strain. *J. Bacteriol.* **187**, 2426–2438 (2005).
27. Gillaspay, A. F. *et al.* *Gram Positive Pathogens*. (eds Fischetti, V., Novick, R., Ferretti, J., Portnoy, D. & Rood, J.) 381–412 (ASM Press, 2006).
28. Kuroda, M. *et al.* Whole genome sequencing of methicillin-resistant *Staphylococcus aureus*. *Lancet* **357**, 1225–1240 (2001).
29. Diep, B. A. *et al.* Complete genome sequence of USA300, an epidemic clone of community-acquired methicillin-resistant *Staphylococcus aureus*. *Lancet* **367**, 731–739 (2006).
30. Baba, T., Bae, T., Schneewind, O., Takeuchi, F. & Hiramatsu, K. Genome sequence of *Staphylococcus aureus* strain Newman and comparative analysis of staphylococcal genomes: polymorphism and evolution of two major pathogenicity islands. *J. Bacteriol.* **190**, 300–310 (2008).
31. Holden, M. T. *et al.* Genome sequence of a recently emerged, highly transmissible, multi-antibiotic- and antiseptic-resistant variant of methicillin-resistant *Staphylococcus aureus*, sequence type 239 (TW). *J. Bacteriol.* **192**, 888–892 (2010).
32. Schijffelen, M. J., Boel, C. H., van Strijp, J. A. & Fluit, A. C. Whole genome analysis of a livestock-associated methicillin-resistant *Staphylococcus aureus* ST398 isolate from a case of human endocarditis. *BMC Genomics* **11**, 376 (2010).
33. Chua, K. *et al.* Complete genome sequence of *Staphylococcus aureus* strain JKD6159, a unique Australian clone of ST93-IV community methicillin-resistant *Staphylococcus aureus*. *J. Bacteriol.* **192**, 5556–5557 (2010).
34. Herron-Olson, L., Fitzgerald, J. R., Musser, J. M. & Kapur, V. Molecular correlates of host specialization in *Staphylococcus aureus*. *PLoS ONE* **2**, e1120 (2007).
35. Guinane, C. M. *et al.* Evolutionary genomics of *Staphylococcus aureus* reveals insights into the origin and molecular basis of ruminant host adaptation. *Genome Biol. Evol.* **2**, 454–466 (2010).
36. Lowder, B. V. *et al.* Recent human-to-poultry host jump, adaptation, and pandemic spread of *Staphylococcus aureus*. *Proc. Natl Acad. Sci. USA* **106**, 19545–19550 (2009).
37. Hennig, W. *Grundzüge einer Theorie der Phylogenetischen Systematik* (Deutscher Zentralverlag, 1950).
38. Lankester, E. R. On the use of the term homology in modern zoology, and the distinction between homogenetic and homoplastic agreements. *Ann. Mag. Nat. Hist.* **6**, 34–43 (1870).
39. Maynard Smith, J. & Smith, N. H. Detecting recombination from gene trees. *Mol. Biol. Evol.* **15**, 590–599 (1998).
40. Holmes, E. C., Urwin, R. & Maiden, M. C. The influence of recombination on the population structure and evolution of the human pathogen *Neisseria meningitidis*. *Mol. Biol. Evol.* **16**, 741–749 (1999).
41. Meunier, J. & Eyre-Walker, A. The correlation between linkage disequilibrium and distance: implications for recombination in hominid mitochondria. *Mol. Biol. Evol.* **18**, 2132–2135 (2001).
42. Feil, E. J. *et al.* How clonal is *Staphylococcus aureus*? *J. Bacteriol.* **185**, 3307–3316 (2003).
43. Robinson, D. A., Monk, A. B., Cooper, J. E., Feil, E. J. & Enright, M. C. Evolutionary genetics of the accessory gene regulator (*agr*) locus in *Staphylococcus aureus*. *J. Bacteriol.* **187**, 8312–8321 (2005).
44. Cooper, J. E. & Feil, E. J. The phylogeny of *Staphylococcus aureus* – which genes make the best intra-species markers? *Microbiology* **152**, 1297–1305 (2006).
45. McVean, G., Awadalla, P. & Fearnhead, P. A coalescent-based method for detecting and estimating recombination from gene sequences. *Genetics* **160**, 1231–1241 (2002).
46. Didelot, X. & Falush, D. Inference of bacterial microevolution using multilocus sequence data. *Genetics* **175**, 1251–1266 (2007).
47. Robinson, D. A. & Enright, M. C. Evolution of *Staphylococcus aureus* by large chromosomal replacements. *J. Bacteriol.* **186**, 1060–1064 (2004).
48. Smyth, D. S. & Robinson, D. A. Integrative and sequence characteristics of a novel genetic element, ICE6013, in *Staphylococcus aureus*. *J. Bacteriol.* **191**, 5964–5975 (2009).
49. Takuno, S., Kado, T., Sugino, R. P., Nakhleh, L. & Innan, H. Population genomics in bacteria: a case study of *Staphylococcus aureus*. *Mol. Biol. Evol.* **29**, 797–809 (2012).
50. Sung, J. M.-L. & Lindsay, J. A. *Staphylococcus aureus* strains that are hypersusceptible to resistance gene transfer from enterococci. *Antimicrob. Agents Chemother.* **51**, 2189–2191 (2007).
51. Hanage, W. P., Fraser, C., Tang, J., Connor, T. R. & Corander, J. Hyper-recombination, diversity, and antibiotic resistance in pneumococcus. *Science* **324**, 1454–1457 (2009).
52. Morikawa, K. *et al.* Expression of a cryptic secondary sigma factor gene unveils natural competence for DNA transformation in *Staphylococcus aureus*. *PLoS Pathog.* **8**, e1003003 (2012).
53. Touchon, M. *et al.* Organised genome dynamics in the *Escherichia coli* species results in highly diverse adaptive paths. *PLoS Genet.* **5**, e1000344 (2009).
54. Flanagan, S. E. & Clewell, D. B. Conjugative transfer of Tn916 in *Enterococcus faecalis*: transactivation of homologous transposons. *J. Bacteriol.* **173**, 7136–7141 (1991).
55. Hochhut, B., Marrero, J. & Waldor, M. K. Mobilization of plasmids and chromosomal DNA mediated by the SXT element, a constin found in *Vibrio cholerae* O139. *J. Bacteriol.* **182**, 2043–2047 (2000).
56. Whittle, G., Hamburger, N., Shoemaker, N. B. & Salyers, A. A. A bacteroides conjugative transposon, CTnERL, can transfer a portion of itself by conjugation without excising from the chromosome. *J. Bacteriol.* **188**, 1169–1174 (2006).
57. Brochet, M. *et al.* Shaping a bacterial genome by large chromosomal replacements, the evolutionary history of *Streptococcus agalactiae*. *Proc. Natl Acad. Sci. USA* **105**, 15961–15966 (2008).
58. Brouwer, M. S. M. *et al.* Horizontal gene transfer converts non-toxicogenic *Clostridium difficile* strains into toxin producers. *Nat. Comm.* **4**, 2601 (2013).
59. Brochet, M. *et al.* Atypical association of DDE transposition with conjugation specifies a new family of mobile elements. *Mol. Microbiol.* **71**, 948–959 (2009).
60. Lunter, G. & Goodson, M. Stampy: a statistical algorithm for sensitive and fast mapping of Illumina sequence reads. *Genome Res.* **21**, 936–939 (2011).
61. Li, H. *et al.* The sequence alignment/map (SAM) format and SAMtools. *Bioinformatics* **25**, 2078–2079 (2009).
62. Zerbinio, D. R. & Birney, E. Velvet: algorithms for de novo short read assembly using de Bruijn graphs. *Genome Res.* **18**, 821–829 (2008).
63. Guindon, S. *et al.* New algorithms and methods to estimate maximum-likelihood phylogenies: assessing the performance of PhyML 3.0. *Syst. Biol.* **59**, 307–321 (2010).
64. Pupko, T., Peer, I., Shamir, R. & Graur, D. A fast algorithm for joint reconstruction of ancestral amino acid sequences. *Mol. Biol. Evol.* **17**, 890–896 (2000).
65. Yahara, K., Didelot, X., Ansari, M. A., Sheppard, S. K. & Falush, D. Efficient inference of recombination hot regions in bacterial genomes. *Mol. Biol. Evol.* (doi:10.1093/molbev/msu082).

66. Goerke, C. *et al.* Diversity of prophages in dominant *Staphylococcus aureus* clonal lineages. *J. Bacteriol.* **191**, 3462–3468 (2009).
67. International Working Group on the Classification of Staphylococcal Cassette Chromosome Elements (IWG-SCC). Classification of staphylococcal cassette chromosome mec (SCCmec): guidelines for reporting novel SCCmec elements. *Antimicrob. Agents Chemother.* **53**, 4961–4967 (2009).
68. Rissman, A. I. *et al.* Reordering the contigs of draft genomes using the Mauve Aligner. *Bioinformatics.* **25**, 2071–2073 (2009).
69. R Core Team. R: A language and environment for statistical computing. R Foundation for Statistical Computing, Vienna, Austria. ISBN 3-900051-07-0, URL <http://www.R-project.org/> (2013).
70. Tatusov, R. L., Koonin, E. V. & Lipman, D. J. A genomic perspective on protein families. *Science* **278**, 631–637 (1997).
71. Abbott, J. C., Aanensen, D. M., Rutherford, K., Butcher, S. & Spratt, B. G. WebACT—an online companion for the Artemis Comparison Tool. *Bioinformatics.* **21**, 3665–3666 (2005).
72. Guy, L., Kultima, J. R. & Andersson, S. G. GenoPlotR: comparative gene and genome visualization in R. *Bioinformatics* **26**, 2334–2335 (2010).

Acknowledgements

We would like to thank Ed Feil, Martin Maiden, Gil McVean, Eduardo Rocha for valuable advice and the Oxford MRC High Throughput Sequencing Hub team for technical assistance. This study was supported by the Oxford NIHR Biomedical Research Centre and the UKCRC Modernising Medical Microbiology Consortium, the latter funded under the UKCRC Translational Infection Research Initiative supported by the Medical Research Council, the Biotechnology and Biological Sciences Research Council and the National Institute for Health Research on behalf of the UK Department of Health (Grant G0800778) and the Wellcome Trust (Grant 087646/Z/08/Z). We acknowledge the support of Wellcome Trust core funding (Grant 090532/Z/09/Z). D.W.C. is an NIHR Senior Investigator. D.J.W. is a Sir Henry Dale Fellow, jointly funded by the Wellcome Trust and the Royal Society (Grant 101237/Z/13/Z).

Author contributions

R.G.E., D.J.W. designed the study, performed the analyses, interpreted the results, wrote the manuscript. X.D., A.A., J.C. assisted in analysis. E.M.B., T.G., C.L.C.I. performed bioinformatics processing. R.R.M., K.K., R.B., H.G., R.F., T.E.A.P., A.S.W., D.W.C. designed and conducted the carriage study. B.C.Y., H.L.-S., D.J.W. prepared DNA for whole-genome sequencing. A.V. performed Sanger sequencing.

Additional information

Accession codes: The DNA sequences have been deposited in the European Nucleotide Archive under accession code PRJEB5225 (<http://www.ebi.ac.uk/ena/data/view/PRJEB5225>). Velvet assemblies were deposited in BIGSdb under project name 'Everitt *et al.*' (<http://pubmlst.org/rmlst/>).

Supplementary Information accompanies this paper at <http://www.nature.com/naturecommunications>

Competing financial interests: The authors declare no competing financial interests.

Reprints and permission information is available online at <http://npg.nature.com/reprintsandpermissions/>

How to cite this article: Everitt, R. G. *et al.* Mobile elements drive recombination hotspots in the core genome of *Staphylococcus aureus*. *Nat. Commun.* **5**:3956 doi: 10.1038/ncomms4956 (2014).



This work is licensed under a Creative Commons Attribution 3.0 Unported License. The images or other third party material in this article are included in the article's Creative Commons license, unless indicated otherwise in the credit line; if the material is not included under the Creative Commons license, users will need to obtain permission from the license holder to reproduce the material. To view a copy of this license, visit <http://creativecommons.org/licenses/by/3.0/>