



Mobile Plasmid Mediated Transition From Colistin-Sensitive to Resistant Phenotype in *Klebsiella pneumoniae*

Baoyue Zhang^{1,2}, Bing Yu³, Wei Zhou^{1,2}, Yue Wang⁴, Ziyong Sun⁴, Xiaojun Wu⁵, Shiyun Chen¹, Ming Ni^{6*} and Yangbo Hu^{1*}

¹ CAS Key Laboratory of Special Pathogens and Biosafety, Center for Biosafety Mega-Science, Wuhan Institute of Virology, Chinese Academy of Sciences, Wuhan, China, ² University of Chinese Academy of Sciences, Beijing, China, ³ Department of Pathogen Biology, School of Basic Medicine, Tongji Medical College, Huazhong University of Science and Technology, Wuhan, China, ⁴ Department of Laboratory Medicine, Tongji Hospital, Tongji Medical College, Huazhong University of Science and Technology, Wuhan, China, ⁵ Department of Respiratory and Critical Medicine, Renmin Hospital of Wuhan University, Wuhan, China, ⁶ Department of Infectious Diseases, Tongji Hospital, Tongji Medical College, Huazhong University of Science and Technology, Wuhan, China

OPEN ACCESS

Edited by:

Christophe Merlin,
Université de Lorraine, France

Reviewed by:

Ning Dong,
City University of Hong Kong,
Hong Kong
Hua Zhou,
Zhejiang University, China

*Correspondence:

Ming Ni
niming@tjh.tjmu.edu.cn
Yangbo Hu
ybhu@wh.iov.cn

Specialty section:

This article was submitted to
Antimicrobials, Resistance
and Chemotherapy,
a section of the journal
Frontiers in Microbiology

Received: 20 October 2020

Accepted: 27 January 2021

Published: 15 February 2021

Citation:

Zhang B, Yu B, Zhou W, Wang Y,
Sun Z, Wu X, Chen S, Ni M and Hu Y
(2021) Mobile Plasmid Mediated
Transition From Colistin-Sensitive
to Resistant Phenotype in *Klebsiella
pneumoniae*.
Front. Microbiol. 12:619369.
doi: 10.3389/fmicb.2021.619369

Multidrug-resistant bacteria, including carbapenem-resistant *Klebsiella pneumoniae* (CRKP), are becoming an increasing health crisis worldwide. For CRKP, colistin is regarded as “the last treatment option.” In this study, we isolated a clinical CRKP strain named as *K. pneumoniae* R10-341. Phenotyping analysis showed that this strain could transit from a colistin-sensitive to a resistant phenotype by inserting an IS4 family IS*Kpn72* element into the colistin-resistance associated *mgrB* gene. To investigate the mechanism of this transition, we performed genome sequencing analysis of the colistin-sensitive parental strain and found that 12 copies of IS*Kpn72* containing direct repeats (DR) are located on the chromosome and 1 copy without DR is located on a multidrug-resistant plasmid pR10-341_2. Both types of IS*Kpn72* could be inserted into the *mgrB* gene to cause colistin-resistance, though the plasmid-derived IS*Kpn72* without DR was in higher efficiency. Importantly, we demonstrated that colistin-sensitive *K. pneumoniae* strain transferred with the IS*Kpn72* element also obtained the ability to switch from colistin-sensitive to colistin-resistant phenotype. Furthermore, we confirmed that the IS*Kpn72*-containing pR10-341_2 plasmid was able to conjugate, suggesting that the ability of causing colistin-resistant transition is transferable through common conjugation. Our results point to new challenges for both colistin-resistance detection and CRKP treatment.

Keywords: multidrug resistance, CRKP, mgrB, colistin, phenotype transition

INTRODUCTION

Multidrug-resistant pathogenic bacteria, such as carbapenem-resistant *Klebsiella pneumoniae* (CRKP), are increasingly becoming a health crisis worldwide (Nordmann et al., 2011; Pitout et al., 2015). Polymyxins, including polymyxin B and polymyxin E (colistin), have been regarded as “the last treatment option” for CRKP (Biswas et al., 2012). Polymyxins are lipopeptide antibiotics targeting the lipopolysaccharide (LPS) of the bacterial outer membrane, the main component of the Gram-negative bacterial cell wall (Hancock, 1997; Li et al., 2006).

The increase in infections by polymyxin-resistant bacteria has become a great challenge to clinical treatment (Antoniadou et al., 2007; Bogdanovich et al., 2011; Macesic et al., 2020). In *K. pneumoniae*, the most common polymyxin-resistance mechanism is achieved by LPS modification, which decreases the negative charge of LPS and reduces its affinity to polymyxins (Velkov et al., 2014; Liu et al., 2017). The mobile colistin resistance gene (*mcr-1*) is the first reported plasmid-mediated colistin resistance gene (Liu et al., 2016), which encodes a phosphoethanolamine-lipid A transferase catalyzing the addition of phosphoethanolamine (PEtN) to lipid A (Liu et al., 2016, 2017). To date, 10 variants (*mcr1-10*) have been identified on a wide variety of transferable plasmids (Wang et al., 2018, 2020; Yang et al., 2018; Zhong et al., 2018; Lei et al., 2020), leading to the widespread diffusion of *mcr*-mediated colistin-resistance (Zhong et al., 2018; Nang et al., 2019). Chromosome-mediated colistin-resistance has also been characterized by the involvement of a small transmembrane protein MgrB and the two-component systems (TCSs) PhoPQ, PmrAB, and CrrAB (Gunn and Miller, 1996; Olaitan et al., 2014). To the best of our knowledge, in contrast to *mcr* genes, chromosome-mediated colistin-resistance mechanisms are considered to be stable and have not been reported to be transferred or mobile to other bacteria. However, inactivation of the *mgrB* gene has been widely identified from clinical colistin-resistant clinical *K. pneumoniae* strains (Cannatelli et al., 2013; Gaibani et al., 2014; Olaitan et al., 2014).

In this study, we isolated a multidrug resistant *K. pneumoniae* strain named R10-341 with high frequency ($\sim 10^{-6}$) of colistin heteroresistance (El-Halfawy and Valvano, 2015; Halaby et al., 2016). Genetic and molecular analyses identified that insertion of an IS*Kpn72* element into the *mgrB* gene was responsible for the acquisition of colistin resistance. We further analyzed IS*Kpn72* copies in this strain and demonstrated that the IS*Kpn72* element is derived from a mobile plasmid and suggested that this mobile plasmid has the ability to render transition from colistin-sensitive to resistant phenotype in *K. pneumoniae*.

MATERIALS AND METHODS

Bacterial Strains, Plasmids, and Primers

The *K. pneumoniae* strains named R10-341 and 7097 used in this study were isolated from the sputum samples collected from the Tongji Hospital, Hubei Province, China. The *K. pneumoniae* strains were grown in LB medium with 100 $\mu\text{g}/\text{mL}$ ampicillin at 37°C.

For plasmid constructions, the p15A *ori* from plasmid pACYC184 (Rose, 1988) and the streptomycin-resistance gene from pTargetF (Jiang et al., 2015) were PCR amplified, respectively. These two fragments were assembled as the linearized vector p15A-Sm by overlap PCR, which was then cloned with IS*SplA* (IS fragment from pR10-341_2) or IS*SchR* (IS fragment from chromosome) fragment using the ClonExpress II One Step Cloning Kit (Vazyme) to generate two plasmids named p15A-Sm-IS*SplA* and p15A-Sm-IS*SchR* respectively. All primers used in this study are listed in **Supplementary Table 1**.

Sequence Typing and Colistin Resistant Gene Detection

Multilocus sequence typing (MLST) for the *K. pneumoniae* R10-341 strain was performed as described (Diancourt et al., 2005).¹ Colistin resistance associated genes were detected by PCR. Each of the *mcr* genes was amplified using two pairs of primers. Genes encoding the two-component systems were amplified by PCR and confirmed by DNA sequencing in comparison with the *K. pneumoniae* HS11286 strain (Accession: NC_016845). All primers are listed in **Supplementary Table 1**.

Drug Susceptibility Test

MICs of antibiotics (except colistin) for *K. pneumoniae* R10-341 were determined using the broth microdilution method according to the Clinical and Laboratory Standards Institute (CLSI) guidelines (CLSI document M100-S28)². The susceptibility to colistin was tested according to the guidelines of European Committee on Antimicrobial Susceptibility Testing (EUCAST)³. Briefly, 100 μL Cation-adjusted Mueller-Hinton Broth containing 2-fold diluted antibiotics was added to a 96-well plate, followed by the addition of 100 μL bacterial cells ($10^5 \sim 10^6$ CFU/mL) to each well. The 96-well plate was incubated at 37°C for 16–24 h. The lowest concentration of antibiotic with complete inhibition (clear broth) was regarded as the MIC.

Genome DNA Extraction, Whole Genome Sequencing, and Bioinformatics Analysis

The *K. pneumoniae* R10-341 strain was first spread onto a LB plate. A single colony was selected and cultured in LB medium at 37°C. Genomic DNA was extracted using a bacterial genomic DNA extraction Kit (Tiangen). Genome DNA sequencing was performed by both HiSeq X Ten (Illumina) and MinION (Oxford Nanopore Technologies) platforms according to a standard protocol provided by Illumina and Oxford Nanopore Technologies. The off-machine data of Nanopore sequencing is converted to fastq format through the Albacore software in the MinKNOW software package⁴ (Payne et al., 2019). After filtering to obtain clean reads, these reads are randomly selected and aligned with the Nucleotide Sequence Database. *De novo* genome assembly was performed with Unicycler v0.4.7 (Wick et al., 2017). NCBI Prokaryotic Genomes Annotation Pipeline (PGAP) was used to annotate assembled genome sequence and to identify genes related to conjugation (Tatusova et al., 2016). Antibiotic resistance genes and plasmid replicons were respectively identified by ResFinder v3.0 (Zankari et al., 2012) and PlasmidFinder v2.0 (Carattoli et al., 2014) from the Center for Genomic Epidemiology website⁵. Sequence reads for the whole-genome sequencing are available from the NCBI Sequence Read Archive (PRJNA655367).

¹<https://bigsdbs.pasteur.fr/klebsiella/>

²<https://clsi.org/standards/products/microbiology/documents/m100-preorder/>

³https://www.eucast.org/fileadmin/src/media/PDFs/EUCAST_files/General_documents/Recommendations_for_MIC_determination_of_colistin_March_2016.pdf

⁴<https://github.com/Albacore/albacore>

⁵<http://www.genomicepidemiology.org/>

IS Element Analysis

For analyzing the IS elements in *K. pneumoniae* R10-341, the IS element inserted into the *mgrB* gene in colistin resistant colonies was first identified by PCR and DNA sequencing. This IS element sequence was analyzed in ISfinder database⁶ and was named as ISKpn72 based on suggestion from ISfinder. The sequence of the ISKpn72 element was then aligned with the *K. pneumoniae* R10-341 genome sequence using BLASTn.

Amino acid sequences of transposases used in the phylogenetic tree analyses of the IS elements were downloaded from ISfinder database. Phylogenetic tree was constructed based on average distance using Jalview 2.11 (Waterhouse et al., 2009).

Conjugation Analysis

Since *K. pneumoniae* R10-341 is resistant to several antibiotics but is relatively sensitive to tetracycline, we constructed a tetracycline-resistant (TcR) *E. coli* K-12 strain as the recipient in conjugation experiment using a CRISPR/Cas9 system (Jiang et al., 2015). Briefly, the *E. coli* K-12 strain was first transformed with a Cas9 expressing plasmid pCas, and the sgRNA expressing plasmid pTargetF-EclacZ (targeting the *lacZ* gene) was then co-transformed with a DNA repairing fragment containing tetracycline-resistance gene from pACYC184 plasmid (Rose, 1988). The colonies resistant to tetracycline were screened. A single colony from 50 µg/ml tetracycline-containing LB agar plate was confirmed by DNA sequencing and was named as K12-TcR for subsequent conjugation tests.

Conjugation was performed by mixing an overnight donor (*K. pneumoniae* R10-341) and logarithmic phase recipient (K12-TcR) at a ratio of 4:1 in a total volume of 1 mL as described (Wu et al., 2019). The mixture was then concentrated and spotted onto LB agar without antibiotics at 37°C for 2–4 h to allow conjugation to occur. Since the pR10-341_2 plasmid contains streptomycin resistance gene (Table 1), the conjugated bacterial mixture was plated on LB agar containing 50 µg/ml tetracycline and 50 µg/ml streptomycin to screen for transconjugants carrying plasmid pR10-341_2. Transconjugants were confirmed by PCR using primers paired to *K. pneumoniae* R10-341 (Kpn-F-FR), K12-TcR (Ec-F-FR), and pR10-341_2 plasmid (P-F-FR), respectively.

⁶<http://www-is.biotoul.fr>

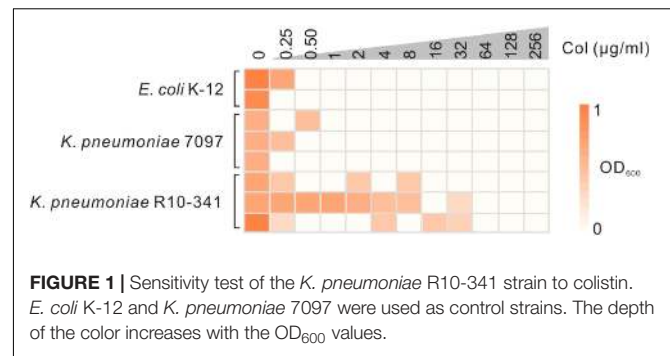


FIGURE 1 | Sensitivity test of the *K. pneumoniae* R10-341 strain to colistin. *E. coli* K-12 and *K. pneumoniae* 7097 were used as control strains. The depth of the color increases with the OD₆₀₀ values.

RESULTS

Characterization of a Multi-Drug Resistant *Klebsiella pneumoniae* R10-341 Strain

The *K. pneumoniae* R10-341 strain was a clinical isolate from a sputum sample collected before antibiotic treatment from Tongji Hospital in Wuhan, China. This *K. pneumoniae* R10-341 strain was classified as ST11 and was resistant to different classes of antibiotics, including beta lactams, aminoglycosides, chloramphenicol, rifamycin, quinolones, sulfonamides and macrolides (summarized in Table 1). When testing the minimal inhibitory concentration (MIC) of colistin for this strain, we observed that some of the wells in the 96-well plate tested were resistant, while other wells showed colistin-sensitive phenotype (Figure 1). To exclude the possibility that the tested strain was a mixture of colistin sensitive and resistant, DNA sequences of known colistin resistance associated genes were tested in *K. pneumoniae* R10-341 parental strain. As summarized in Table 2, *phoPQ*, *pmrAB*, *crrAB*, and *mgrB* genes were the same as those in drug-sensitive strain, and the *mcr1-8* genes could not be successfully amplified in *K. pneumoniae* R10-341 strain. To further exclude the possibility of bacterial contamination, we streaked the R10-341 strain onto LB plate and selected different single colonies. Similar results were obtained for all these single colonies (data not shown), which suggested that the appearance of colistin resistant colonies for *K. pneumoniae* R10-341 strain was due to a colistin heteroresistance (CHR).

TABLE 1 | MIC values of different antibiotics to *K. pneumoniae* R10-341.

Antibiotic name	Antibiotic class	MIC (µg/ml)	Resistance gene	Gene location
Ampicillin	Beta lactams	>256	<i>bla</i> SHV-11 <i>bla</i> KPC-2 <i>bla</i> CTX-M-27	Chromosome pR10-341_2
Kanamycin	Aminoglycoside	128	–	–
Streptomycin	Aminoglycoside	256	<i>aadA</i>	pR10-341_2
Gentamicin	Aminoglycoside	>128	–	–
Rifampin	Rifamycin	>256	<i>arr-2</i>	pR10-341_2
Chloramphenicol	Chloramphenicol	128	<i>cat3</i>	Chromosome
Ciprofloxacin	Quinolones	>256	<i>qnrB</i>	pR10-341_2
Trimethoprim	Sulfonamides	>256	<i>dfrA12</i>	pR10-341_2
Tetracycline	Tetracyclines	16	–	–
Erythromycin	Macrolides	>256	–	–

TABLE 2 | Genes related to colistin resistance in *K. pneumoniae* R10-341.

Resistance mechanism	Gene	Gene functions	Detection results
Lipid A assembly PEtN	<i>mcr-1</i>	Phosphatidylethanolamine-lipid A transferase	No product
	<i>mcr-2</i>		No product
	<i>mcr-3</i>		No product
	<i>mcr-4</i>		No product
	<i>mcr-5</i>		No product
	<i>mcr-6</i>		No product
	<i>mcr-7</i>		No product
	<i>mcr-8</i>		No product
L-Ara4N and PEtN synthesis and modified LPS pathway	<i>mgrB</i>	PhoPQ negative-regulate protein	WT*
	<i>phoPQ</i>	TCS (Two-Component System)	WT*
	<i>pmrAB</i>	TCS	WT*
	<i>crrAB</i>	TCS	WT*

*WT indicates gene had the 100% DNA sequence identity in coding region and a ~150 bp promoter region as these in the reference strain *K. pneumoniae* HS11286.

Insertion of an IS4 Family Transposon Element Into *mgrB* Gene Generated Colistin-Resistant Colonies

To further characterize the *K. pneumoniae* R10-341 strain, we tested the growth of this strain on LB plates containing 100 µg/mL colistin. Consistent with MIC testing, some colonies (~10⁻⁶) grew on the plate containing colistin, but no colonies were obtained from *E. coli* K-12 nor from another clinical isolate named *K. pneumoniae* 7097 on the colistin-containing plate (Figure 2A). To test the mechanism of this colistin resistance, we selected two colonies of the *K. pneumoniae* R10-341 strain from LB plate without colistin and then streaked onto LB plates containing 100 µg/mL colistin. Again, some colonies from both strains can grow on LB plates containing colistin. We then isolated four colonies from each of these two colistin-containing plates and sequenced the *phoPQ*, *pmrAB*, and *mgrB* genes (Figure 2B). Surprisingly, the amplified *mgrB* fragments from colistin-resistant colonies were all ~1.4 kb longer than that from parental colistin-sensitive strains (Figures 2B,C).

Next, we sequenced this ~1.4 kb inserted fragment. Sequence alignment in the NCBI database showed this fragment encodes an IS4 family transposase. Further analysis of this ~1.4 kb inserted fragment in ISfinder suggested that this insertion sequence could be named as ISKpn72 and classified into the IS10 group in the IS4 family, as its sequence is >95% identical to IS10R (Figure 2D). In accordance with this analysis, we identified 22 bp inverted repeats (IR) at both the left and right ends of this insertion fragment and 9 bp direct repeats (DR) around the insertion site (Figure 2C).

K. pneumoniae R10-341 Carries the ISKpn72 Element Both in the Chromosome and Plasmid DNA

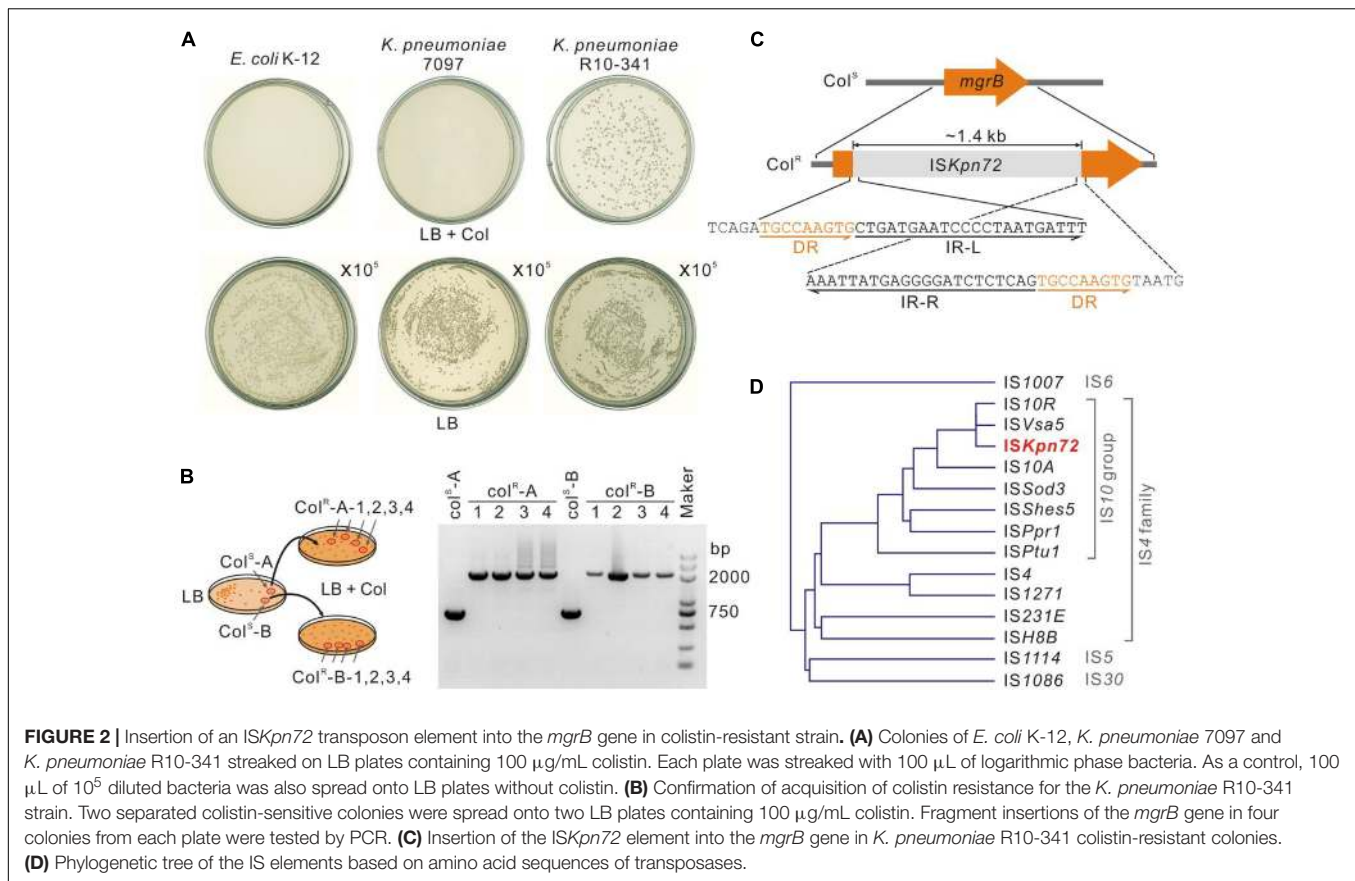
The R10-341 strain can become colistin-resistant by inserting the ISKpn72 element into the *mgrB* gene, but we do not know the source of the ISKpn72 element. We therefore sequenced the genome of the original colistin-sensitive *K. pneumoniae* R10-341 strain. We obtained a 5.3 Mb chromosome DNA and two plasmid sequences (named pR10-341_1 and pR10-341_2,

respectively), which are 5.3Mb, 10.06 kb, and 236.3 kb with G + C contents of 57.46, 55.07, and 52.72%, respectively. According to the PlasmidFinder database, pR10-341_1 and pR10-341_2 harbored ColRNAI and IncR replicon sequence, respectively. Several antibiotic resistance genes were identified both on the chromosome and plasmids, which were in consistent with our drug resistance tests (Table 1). Genome sequencing analysis confirmed that colistin-resistance related genes, including *mgrB*, *phoPQ*, and *pmrAB*, were all the same as the *K. pneumoniae* reference strain HS11286 (Genome accession: NC_016845), which further supports our hypothesis that the colistin-sensitive strain acquired resistance in the presence of colistin.

In searching for the ISKpn72 element sequence in the whole genome we obtained, we found 12 copies of this ISKpn72 element on the chromosome, and 1 copy on the plasmid pR10-341_2. Similar to that observed in the colistin-resistant R10-341 strain, all copies of the ISKpn72 element contain a pair of 22 bp-length imperfect terminal inverted repeats (IR) (Figure 3A). Surrounding the 12 copies of the ISKpn72 element located on the chromosome are 9-bp direct repeated (DR) sequences. In contrast, the plasmid encoding the ISKpn72 element only contains IR sequences but not the 9 bp-DR sequences (Figure 3A). Therefore, we assumed that the copy without DR on pR10-341_2 might be the root of all the ISKpn72 copies on the chromosome. These analyses suggested that the ISKpn72 element had already been inserted into the chromosome in the parental colistin-sensitive strain.

Both the DR-Containing and DR-Missing ISKpn72 Elements Can Be Inserted Into the *mgrB* Gene

Whether these existing ISKpn72 elements could be inserted into the *mgrB* gene to cause colistin-resistance is the next question. We transformed plasmids cloned with either the ISKpn72 element from pR10-341_2 or an ISKpn72 element from the *K. pneumoniae* R10-341 chromosome (named as ISp1a and ISchr, respectively) into the colistin-sensitive strain *K. pneumoniae* 7097 (Figure 3B). In contrast to the parental *K. pneumoniae* 7097 strain, the transformation of the plasmid containing either



ISpla or *ISchr* into this colistin-sensitive strain resulted in the growth of some colistin-resistant colonies. Colony forming units (CFU) on LB agar containing 100 $\mu\text{g}/\text{mL}$ colistin revealed that the plasmid-derived *ISKpn72* was more efficient than the chromosome-derived one in inserting into the *mgrB* gene to acquire colistin-resistance (Figure 3C). These data suggest that both *ISpla* and *ISchr* can be inserted into *mgrB* gene to acquire the colistin-resistance phenotype and *ISpla* without DRs had a higher efficiency.

The Resistance-Acquiring Mechanism May Be Potently Disseminated Among Bacteria

The next question is whether the *ISKpn72* element on the pR10-341_2 plasmid could be horizontally transferred to acquire the colistin-resistant phenotype. Sequence alignment of the pR10-341_2 plasmid from the NCBI database showed high similarity to the conjugative multidrug resistant plasmid pR46-270 in a *K. pneumoniae* R46 isolate (GenBank: CP035776.1). Accordingly, a conjugative system consisting of *tra*, *trb*, and *finO* genes were encoded by the plasmid (Figure 4A). To confirm the transferability of the pR10-341_2, we used *K. pneumoniae* R10-341 as the donor and a tetracycline-resistant *E. coli* K12-TcR strain as the recipient to verify plasmid conjugation (Figure 4B). As expected, the *E. coli* K12-TcR strain containing the pR10-341_2 plasmid was successfully obtained (Figure 4C),

suggesting the pR10-341_2 plasmid was transferable. Together, these results demonstrated that the *K. pneumoniae* R10-341 was able to disseminate the ability to switch from colistin-sensitive to resistant phenotype by transferring an IS containing plasmid.

DISCUSSION

Colistin-resistant bacteria are becoming an increasing threat to healthcare especially in hospitals (Antoniadou et al., 2007; Bogdanovich et al., 2011; Zhong et al., 2018; Nang et al., 2019). Previous studies have focused on mechanisms of drug-resistance and how to detect these resistant strains (Olaitan et al., 2014; Poirel et al., 2017). In this study, we identified a colistin-sensitive *K. pneumoniae* R10-341 strain with high frequency ($\sim 10^{-6}$) of colistin heteroresistance. The *K. pneumoniae* R10-341 strain was classified as ST11, which is the most widely prevalent CRKP genotype in China and contains the *blaKPC-2* gene, which encodes the KPC family carbapenem-hydrolyzing class A beta-lactamase (Qi et al., 2011; Liu et al., 2018). We showed that this *K. pneumoniae* R10-341 strain could transit from a colistin-sensitive to a resistant phenotype by the insertion of an *ISKpn72* element into the *mgrB* gene. Importantly, we characterized this *ISKpn72* element in a mobile plasmid, which showed high similarity to the conjugative plasmid pR46-270 (Wu et al., 2019).

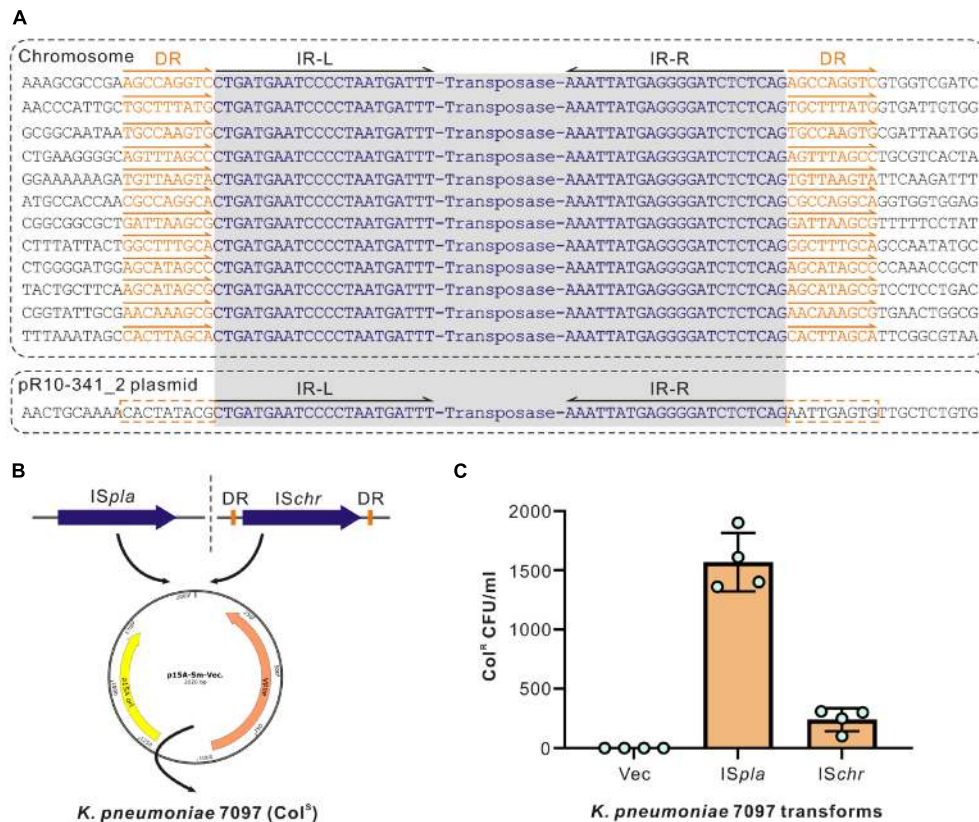


FIGURE 3 | Different types of ISs have different insertion efficiencies. **(A)** Schematic diagram of IS_{Kpn72} elements located on chromosome and P2 plasmid. IR sequences are shown in blue and the DR sequences are indicated in orange. **(B)** Schematic diagram for cloning two forms of the IS_{Kpn72} element into colistin-sensitive *K. pneumoniae* 7097 strain. **(C)** Acquired colistin-resistance for *K. pneumoniae* 7097 strain transformed with different IS_{Kpn72} elements. Overnight grown bacteria were spread onto plates containing 100 μ g/mL colistin, and bacterial colony forming unit (CFU) numbers were calculated. Representative data from two-independent experiments with four technique replicates are shown.

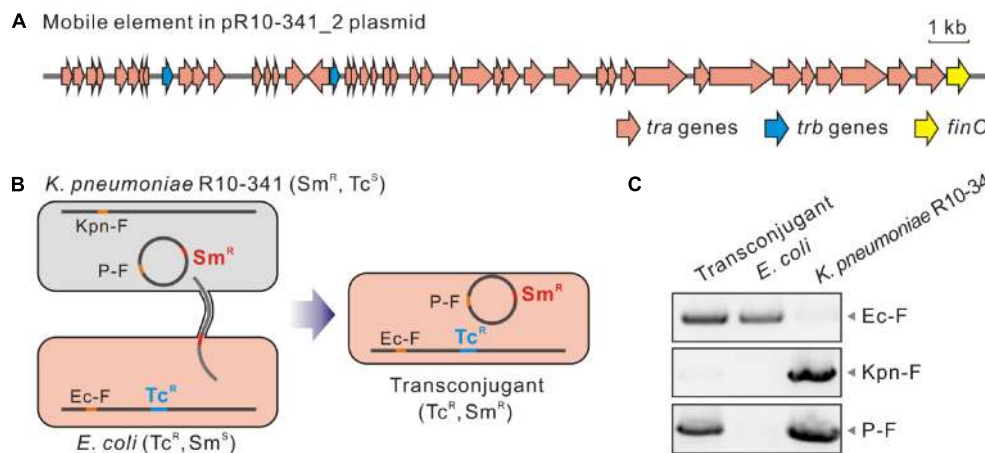


FIGURE 4 | Transconjugation of the pR10-341_2 plasmid from *K. pneumoniae* R10-341. **(A)** Genes involved in mobility of the pR10-341_2 plasmid. **(B)** Strategy used in conjugation transfer analysis. **(C)** PCR confirmation of transconjugant. Data of amplified products for Ec-F, Kpn-F, and P-F are shown.

These analyses suggest that the ability of transitioning from colistin-sensitive to resistant may be disseminated through plasmid transfer.

Heteroresistance has been reported to lead to failures in antibiotic treatment (Band et al., 2016; Band et al., 2019). In CRKP, colistin heteroresistance could be achieved by inserted

inactivation and deletion or point mutations in *mgrB*, *phoP*, *phoQ*, *lpxM*, and *yciM* genes (Jayol et al., 2015; Halaby et al., 2016). Similar as previous studies, we found that the colistin heteroresistance in *K. pneumoniae* R10-341 was also caused by inactivation of chromosomal encoded *mgrB* gene, but we characterized that this inactivation was mediated by a mobile plasmid derived IS element. Therefore, our result is the first to report that the colistin heteroresistance is able to be transferred or spread via plasmid mobilization.

Colistin-resistance in *K. pneumoniae* can be achieved by chromosome- or plasmid-encoded genes (Ah et al., 2014; Olaitan et al., 2014; Rebelo et al., 2018). Chromosome-encoded mutations are considered to be stable (Gunn et al., 1998), while plasmid encoded *mcr* genes can be potentially transferred across bacterial species to cause direct colistin-resistance (Liu et al., 2016; Zhong et al., 2018). Being different from spreading of drug-resistance genes, we characterized the spread of the ability to become colistin-resistance via mobile plasmid. The ISKpn72-containing mobile plasmid enables the strain to transit from colistin-sensitive to resistant phenotype by inactivating the *mgrB* gene, which may also explain the widespread of *mgrB* gene inactivation in clinical samples (Cannatelli et al., 2014; Gaibani et al., 2014). Interestingly, all copies of the ISKpn72 element contain a pair of 22 bp-length imperfect terminal inverted repeats (IR), which is a characteristic feature of the IS element in bacteria (Rezsöhazy et al., 1993; Mahillon and Chandler, 1998); but only the 12 copies of the ISKpn72 element located on the chromosome contain 9-bp direct repeated (DR) sequences, which are considered as a marker of IS insertion (Mahillon and Chandler, 1998). These observations indicate that the copies of ISKpn72 on the chromosome are probably inserted from the DR-missing ISKpn72 element on the pR10-341_2 plasmid. In addition, we observed a colistin-resistance acquirement of IS_{Schr} transformers (Figure 3C), which indicated that the bacteria also can store the ability to become colistin-resistance by inserting IS in chromosome. The ability to transit to colistin-resistant can be both stored at chromosome and disseminated through mobile plasmids.

The mechanism of a mobile plasmid-mediated transfer of the ability to transit from a colistin-sensitive to resistant phenotype brings not only challenges to colistin-resistance detection, but also raises concerns to the use of colistin in clinical treatment. Firstly, this type of colistin-resistant phenotype was generated by the insertion of an ISKpn72 element into the *mgrB* gene, which means the parental strain may be mis-classified as colistin-sensitive in drug-resistant genotyping or phenotyping assays. Secondly, the ISKpn72 and other IS elements widely exist in prokaryotes (Mahillon and Chandler, 1998; Frost et al., 2005), suggesting transition to colistin-resistance may be widely

occurred (Cannatelli et al., 2013, 2014). Different methods have been deployed for antibiotic resistance analysis and prediction, including traditional antimicrobial susceptibility testing (AST) (Jorgensen and Ferraro, 1998) and bioinformatics tools (Zankari et al., 2012; Boolchandani et al., 2019). It is still a challenge to identify whether a strain is able to acquiring inheritable or transmissible antibiotic-resistance, or under specific conditions due to the wide existence of IS elements. Additionally, the frequency of the ISKpn72 insertion into the *mgrB* gene characterized in our study can reach $\sim 10^{-6}$, indicating that the IS insertion, especially the IS4 family, should receive more attention in the clinical use of colistin.

DATA AVAILABILITY STATEMENT

The datasets presented in this study can be found in online repositories. The names of the repository/repositories and accession number(s) can be found in the article/Supplementary Material.

AUTHOR CONTRIBUTIONS

MN and YH conceptualized and designed the study. BZ and BY performed the experiments. BZ, WZ, XW, and SC analyzed the data. YW and ZS provided the materials. BZ, MN, and YH drafted the manuscript. BY and SC critically revised the manuscript. All authors read and approved the final manuscript.

FUNDING

This work was supported by the Open Research Fund Program of National Biosafety Laboratory, Wuhan (2018SPCAS001 to MN and YH) and the Youth Innovation Promotion Association CAS (Y201750 to YH).

ACKNOWLEDGMENTS

We thank the Core Facility and Technical Support of Wuhan Institute of Virology for help in this study.

SUPPLEMENTARY MATERIAL

The Supplementary Material for this article can be found online at: <https://www.frontiersin.org/articles/10.3389/fmicb.2021.619369/full#supplementary-material>

REFERENCES

- Ah, Y. M., Kim, A. J., and Lee, J. Y. (2014). Colistin resistance in *Klebsiella pneumoniae*. *Int. J. Antimicrob. Agent.* 44, 8–15.
- Antoniadou, A., Kontopidou, F., Poulakou, G., Koratzanis, E., Galani, I., Papadomichelakis, E., et al. (2007). Colistin-resistant isolates of *Klebsiella pneumoniae* emerging in intensive care unit patients: first report of a multiclonal cluster. *J. Antimicrob. Chemother.* 59, 786–790. doi: 10.1093/jac/dkl562
- Band, V. I., Crispell, E. K., Napier, B. A., Herrera, C. M., Tharp, G. K., Vavikolanu, K., et al. (2016). Antibiotic failure mediated by a resistant subpopulation in *Enterobacter cloacae*. *Nat. Microbiol.* 1:16053.
- Band, V. I., Hufnagel, D. A., Jaggavarapu, S., Sherman, E. X., Wozniak, J. E., Satola, S. W., et al. (2019). Antibiotic combinations that exploit heteroresistance

- to multiple drugs effectively control infection. *Nat. Microbiol.* 4, 1627–1635. doi: 10.1038/s41564-019-0480-z
- Biswas, S., Brunel, J.-M., Dubus, J.-C., Reynaud-Gaubert, M., and Rolain, J.-M. (2012). Colistin: an update on the antibiotic of the 21st century. *Expert. Rev. Anti-Infect. Ther.* 10, 917–934. doi: 10.1586/eri.12.78
- Bogdanovich, T., Adams-Haduch, J. M., Tian, G. B., Nguyen, M. H., Kwak, E. J., Muto, C. A., et al. (2011). Colistin-resistant, *Klebsiella pneumoniae* carbapenemase (KPC)-producing *Klebsiella pneumoniae* belonging to the international epidemic clone ST258. *Clin. Infect. Dis.* 53, 373–376. doi: 10.1093/cid/cir401
- Boolchandani, M., D'souza, A. W., and Dantas, G. (2019). Sequencing-based methods and resources to study antimicrobial resistance. *Nat. Rev. Genet.* 20, 356–370.
- Cannatelli, A., D'andrea, M. M., Giani, T., Di Pilato, V., Arena, F., Ambretti, S., et al. (2013). *In vivo* emergence of colistin resistance in *Klebsiella pneumoniae* producing KPC-type carbapenemases mediated by insertional inactivation of the PhoQ/PhoP mgrB regulator. *Antimicrob. Agent. Chemother.* 57, 5521–5526. doi: 10.1128/aac.01480-13
- Cannatelli, A., Giani, T., D'andrea, M. M., Di Pilato, V., Arena, F., Conte, V., et al. (2014). MgrB inactivation is a common mechanism of colistin resistance in KPC-producing *Klebsiella pneumoniae* of clinical origin. *Antimicrob. Agent. Chemother.* 58, 5696–5703. doi: 10.1128/aac.03110-14
- Carattoli, A., Zankari, E., García-Fernández, A., Voldby Larsen, M., Lund, O., Villa, L., et al. (2014). *In silico* detection and typing of plasmids using plasmidfinder and plasmid multilocus sequence typing. *Antimicrob. Agent. Chemother.* 58, 3895–3903. doi: 10.1128/aac.02412-14
- Diancourt, L., Passet, V., Verhoef, J., Grimont, P. A., and Brisse, S. (2005). Multilocus sequence typing of *Klebsiella pneumoniae* nosocomial isolates. *J. Clin. Microbiol.* 43, 4178–4182. doi: 10.1128/jcm.43.8.4178-4182.2005
- El-Halfawy, O. M., and Valvano, M. A. (2015). Antimicrobial heteroresistance: an emerging field in need of clarity. *Clin. Microbiol. Rev.* 28, 191–207. doi: 10.1128/cmr.00058-14
- Frost, L. S., Leplae, R., Summers, A. O., and Toussaint, A. (2005). Mobile genetic elements: the agents of open source evolution. *Nat. Rev. Microbiol.* 3, 722–732. doi: 10.1038/nrmicro1235
- Gaibani, P., Lombardo, D., Lewis, R. E., Mercuri, M., Bonora, S., Landini, M. P., et al. (2014). *In vitro* activity and post-antibiotic effects of colistin in combination with other antimicrobials against colistin-resistant KPC-producing *Klebsiella pneumoniae* bloodstream isolates. *J. Antimicrob. Chemother.* 69, 1856–1865. doi: 10.1093/jac/dku065
- Gunn, J. S., Lim, K. B., Krueger, J., Kim, K., Guo, L., Hackett, M., et al. (1998). PmrA-PmrB-regulated genes necessary for 4-aminoarabinose lipid A modification and polymyxin resistance. *Mol. Microbiol.* 27, 1171–1182. doi: 10.1046/j.1365-2958.1998.00757.x
- Gunn, J. S., and Miller, S. I. (1996). PhoP-PhoQ activates transcription of *pmrAB*, encoding a two-component regulatory system involved in *Salmonella typhimurium* antimicrobial peptide resistance. *J. Bacteriol.* 178, 6857–6864. doi: 10.1128/jb.178.23.6857-6864.1996
- Halaby, T., Kucukkose, E., Janssen, A. B., Rogers, M. R. C., Doorduyn, D. J., Van Der Zanden, A. G. M., et al. (2016). Genomic characterization of colistin heteroresistance in *Klebsiella pneumoniae* during a nosocomial outbreak. *Antimicrob. Agent. Chemother.* 60, 6837–6843. doi: 10.1128/aac.01344-16
- Hancock, R. E. (1997). Peptide antibiotics. *Lancet* 349, 418–422.
- Jayol, A., Nordmann, P., Brink, A., and Poirel, L. (2015). Heteroresistance to colistin in *Klebsiella pneumoniae* associated with alterations in the PhoPQ regulatory system. *Antimicrob. Agent. Chemother.* 59, 2780–2784. doi: 10.1128/aac.05055-14
- Jiang, Y., Chen, B., Duan, C., Sun, B., Yang, J., Yang, S. et al. (2015). Multigene editing in the *Escherichia coli* genome via the CRISPR-Cas9 system. *Appl. Environ. Microbiol.* 81, 2506–2514. doi: 10.1128/aem.04023-14
- Jorgensen, J. H., and Ferraro, M. J. (1998). Antimicrobial susceptibility testing: general principles and contemporary practices. *Clin. Infect. Dis.* 26, 973–980. doi: 10.1086/513938
- Lei, C. W., Zhang, Y., Wang, Y. T., and Wang, H. N. (2020). Detection of mobile colistin resistance gene *mcr-10.1* in a conjugative plasmid from *Enterobacter roggenkampii* of chicken origin in china. *Antimicrob. Agent. Chemother.* 64, e1120–e1191.
- Li, J., Nation, R. L., Turnidge, J. D., Milne, R. W., Coulthard, K., Rayner, C. R., et al. (2006). Colistin: the re-emerging antibiotic for multidrug-resistant Gram-negative bacterial infections. *Lancet Infect. Dis.* 6, 589–601. doi: 10.1016/s1473-3099(06)70580-1
- Liu, L., Feng, Y., Tang, G., Lin, J., Huang, W., Qiao, F., et al. (2018). Carbapenem-resistant isolates of the *Klebsiella pneumoniae* complex in western china: the common ST11 and the surprising hospital-specific types. *Clin. Infect. Dis.* 67, S263–S265.
- Liu, Y. Y., Chandler, C. E., Leung, L. M., Mcelheny, C. L., Mettuss, R. T., Shanks, R. M. Q., et al. (2017). Structural modification of lipopolysaccharide conferred by in gram-negative ESKAPE pathogens. *Antimicrob. Agent. Chemother.* 61, e517–e580.
- Liu, Y. Y., Wang, Y., Walsh, T. R., Yi, L. X., Zhang, R., Spencer, J., et al. (2016). Emergence of plasmid-mediated colistin resistance mechanism MCR-1 in animals and human beings in china: a microbiological and molecular biological study. *Lancet Infect. Dis.* 16, 161–168. doi: 10.1016/s1473-3099(15)00424-7
- Macesic, N., Nelson, B., Mcconville, T. H., Giddins, M. J., Green, D. A., Stump, S., et al. (2020). Emergence of polymyxin resistance in clinical *Klebsiella pneumoniae* through diverse genetic adaptations: a genomic, retrospective cohort study. *Clin. Infect. Dis.* 70, 2084–2091. doi: 10.1093/cid/ciz623
- Mahillon, J., and Chandler, M. (1998). Insertion sequences. *Microbiol. Mol. Biol. Rev.* 62, 725–774.
- Nang, S. C., Li, J., and Velkov, T. (2019). The rise and spread of plasmid-mediated polymyxin resistance. *Crit. Rev. Microbiol.* 45, 131–161. doi: 10.1080/1040841x.2018.1492902
- Nordmann, P., Naas, T., and Poirel, L. (2011). Global spread of carbapenemase-producing *enterobacteriaceae*. *Emerg. Infect. Dis.* 17, 1791–1798.
- Olaïtan, A. O., Morand, S., and Rolain, J. M. (2014). Mechanisms of polymyxin resistance: acquired and intrinsic resistance in bacteria. *Front. Microbiol.* 5:643. doi: 10.3389/fmicb.2014.00643
- Payne, A., Holmes, N., Rakyar, V., and Loose, M. (2019). BulkVis: a graphical viewer for Oxford nanopore bulk FAST5 files. *Bioinformatics* 35, 2193–2198. doi: 10.1093/bioinformatics/bty841
- Pitout, J. D. D., Nordmann, P., and Poirel, L. (2015). Carbapenemase-producing *Klebsiella pneumoniae*, a key pathogen set for global nosocomial dominance. *Antimicrob. Agent. Chemother.* 59, 5873–5884. doi: 10.1128/aac.01019-15
- Poirel, L., Jayol, A., and Nordmann, P. (2017). Polymyxins: antibacterial activity, susceptibility testing, and resistance mechanisms encoded by plasmids or chromosomes. *Clin. Microbiol. Rev.* 30, 557–596. doi: 10.1128/cmr.00064-16
- Qi, Y., Wei, Z., Ji, S., Du, X., Shen, P., Yu, Y. et al. (2011). ST11, the dominant clone of KPC-producing *Klebsiella pneumoniae* in China. *J. Antimicrob. Chemother.* 66, 307–312. doi: 10.1093/jac/dkq431
- Rebelo, A. R., Bortolonia, V., Kjeldgaard, J. S., Pedersen, S. K., Leekitcharoenphon, P., Hansen, I. M., et al. (2018). Multiplex PCR for detection of plasmid-mediated colistin resistance determinants, *mcr-1*, *mcr-2*, *mcr-3*, *mcr-4* and *mcr-5* for surveillance purposes. *Euro. Surveill.* 23, 17–00672.
- Rezsöhazy, R., Hallet, B., Delcour, J., and Mahillon, J. (1993). The IS4 family of insertion sequences: evidence for a conserved transposase motif. *Mol. Microbiol.* 9, 1283–1295. doi: 10.1111/j.1365-2958.1993.tb01258.x
- Rose, R. E. (1988). The nucleotide sequence of pACYC184. *Nucleic Acids Res.* 16:355. doi: 10.1093/nar/16.1.355
- Tatusova, T., Dicuccio, M., Badretdin, A., Chetvernin, V., Nawrocki, E. P., Zaslavsky, L., et al. (2016). NCBI prokaryotic genome annotation pipeline. *Nucleic Acids Res.* 44, 6614–6624. doi: 10.1093/nar/gkw569
- Velkov, T., Deris, Z. Z., Huang, J. X., Azad, M. A., Butler, M., Sivanesan, S., et al. (2014). Surface changes and polymyxin interactions with a resistant strain of *Klebsiella pneumoniae*. *Innate. Immun.* 20, 350–363. doi: 10.1177/1753425913493337
- Wang, C., Feng, Y., Liu, L., Wei, L., Kang, M., and Zong, Z. (2020). Identification of novel mobile colistin resistance gene. *Emerg. Microb. Infect.* 9, 508–516. doi: 10.1080/22221751.2020.1732231
- Wang, X., Wang, Y., Zhou, Y., Li, J., Yin, W., Wang, S., et al. (2018). Emergence of a novel mobile colistin resistance gene, *mcr-8*, in NDM-producing *Klebsiella pneumoniae*. *Emerg. Microb. Infect.* 7:122.
- Waterhouse, A. M., Procter, J. B., Martin, D. M. A., Clamp, M., and Barton, G. J. (2009). Jalview Version 2—a multiple sequence alignment editor and analysis workbench. *Bioinformatics* 25, 1189–1191. doi: 10.1093/bioinformatics/btp033

- Wick, R. R., Judd, L. M., Gorrie, C. L., and Holt, K. E. (2017). Unicycler: Resolving bacterial genome assemblies from short and long sequencing reads. *PLoS comput. Biol.* 13:e1005595. doi: 10.1371/journal.pcbi.1005595
- Wu, F., Ying, Y., Yin, M., Jiang, Y., Wu, C., Qian, C., et al. (2019). Molecular characterization of a multidrug-resistant strain R46 isolated from a rabbit. *Int. J. Genom.* 2019:5459190.
- Yang, Y.-Q., Li, Y.-X., Lei, C.-W., Zhang, A.-Y., and Wang, H.-N. (2018). Novel plasmid-mediated colistin resistance gene *mcr-7.1* in *Klebsiella pneumoniae*. *J. Antimicrob. Chemother.* 73, 1791–1795. doi: 10.1093/jac/dky111
- Zankari, E., Hasman, H., Cosentino, S., Vestergaard, M., Rasmussen, S., Lund, O., et al. (2012). Identification of acquired antimicrobial resistance genes. *J. Antimicrob. Chemother.* 67, 2640–2644. doi: 10.1093/jac/dks261
- Zhong, L. L., Phan, H. T. T., Shen, C., Vihta, K. D., Sheppard, A. E., Huang, X., et al. (2018). High rates of human fecal carriage of *mcr-1*-positive multidrug-resistant *Enterobacteriaceae* emerge in china in association with successful plasmid families. *Clin. Infect. Dis.* 66, 676–685. doi: 10.1093/cid/cix885
- Conflict of Interest:** The authors declare that the research was conducted in the absence of any commercial or financial relationships that could be construed as a potential conflict of interest.

Copyright © 2021 Zhang, Yu, Zhou, Wang, Sun, Wu, Chen, Ni and Hu. This is an open-access article distributed under the terms of the Creative Commons Attribution License (CC BY). The use, distribution or reproduction in other forums is permitted, provided the original author(s) and the copyright owner(s) are credited and that the original publication in this journal is cited, in accordance with accepted academic practice. No use, distribution or reproduction is permitted which does not comply with these terms.