

RESEARCH ARTICLE

# Modern-day SIV viral diversity generated by extensive recombination and cross-species transmission

Sidney M. Bell<sup>1,2\*</sup>, Trevor Bedford<sup>1</sup>

**1** Vaccine and Infectious Disease Division, Fred Hutchinson Cancer Research Center, Seattle, Washington, United States of America, **2** Molecular and Cellular Biology Program, University of Washington, Seattle, Washington, United States of America

\* [sbell23@fredhutch.org](mailto:sbell23@fredhutch.org)



 OPEN ACCESS

**Citation:** Bell SM, Bedford T (2017) Modern-day SIV viral diversity generated by extensive recombination and cross-species transmission. *PLoS Pathog* 13(7): e1006466. <https://doi.org/10.1371/journal.ppat.1006466>

**Editor:** Guido Silvestri, Emory University, UNITED STATES

**Received:** January 19, 2017

**Accepted:** June 12, 2017

**Published:** July 3, 2017

**Copyright:** © 2017 Bell, Bedford. This is an open access article distributed under the terms of the [Creative Commons Attribution License](https://creativecommons.org/licenses/by/4.0/), which permits unrestricted use, distribution, and reproduction in any medium, provided the original author and source are credited.

**Data Availability Statement:** All datasets, config files, documentation, and scripts used in this analysis or to generate figures are available publicly at <https://github.com/blab/siv-cst>.

**Funding:** TB is a Pew Biomedical Scholar and his work is supported by National Institutes of Health award R35 GM119774-01. SB is a National Science Foundation Graduate Research Fellow and her work is supported by grant DGE-1256082. Her work is also supported by a training grant from the National Cancer Institute of the National Institutes of Health, award number T32CA080416; a Vassar

## Abstract

Cross-species transmission (CST) has led to many devastating epidemics, but is still a poorly understood phenomenon. HIV-1 and HIV-2 (human immunodeficiency virus 1 and 2), which have collectively caused over 35 million deaths, are the result of multiple CSTs from chimpanzees, gorillas, and sooty mangabeys. While the immediate history of HIV is known, there are over 45 lentiviruses that infect specific species of primates, and patterns of host switching are not well characterized. We thus took a phylogenetic approach to better understand the natural history of SIV recombination and CST. We modeled host species as a discrete character trait on the viral phylogeny and inferred historical host switches and the pairwise transmission rates between each pair of 24 primate hosts. We identify 14 novel, well-supported, ancient cross-species transmission events. We also find that lentiviral lineages vary widely in their ability to infect new host species: *SIVcol* (from colobus monkeys) is evolutionarily isolated, while *SIVagms* (from African green monkeys) frequently move between host subspecies. We also examine the origins of *SIVcpz* (the predecessor of HIV-1) in greater detail than previous studies, and find that there are still large portions of the genome with unknown origins. Observed patterns of CST are likely driven by a combination of ecological circumstance and innate immune factors.

## Author summary

Virus cross-species transmissions (CSTs) can cause devastating epidemics, including EBOV, MERS, and HIV. HIV is actually one of over 45 similar viruses, called SIVs, which infect primates; the emergence of HIV as a human pathogen was the result of multiple CSTs, and yet it is not understood how commonly these viruses switch hosts. We used publicly available genetic sequence data to reconstruct the evolutionary history of these viruses. We found evidence for at least 13 instances of recombination between lineages of SIV, and identified at least 14 ancient cross-species transmission events where an SIV switched hosts. These results provide important ecological context to the HIV pandemic,

Fellowship for Graduate Study; and an ARCS foundation fellowship. The funders had no role in study design, data collection and analysis, decision to publish, or preparation of the manuscript.

**Competing interests:** The authors have declared that no competing interests exist.

suggesting that while SIV CST is relatively rare over evolutionary time, it is an important factor that has shaped SIV biology and evolution.

## Introduction

As demonstrated by the recent epidemics of EBOV and MERS, and by the global HIV pandemic, viral cross-species transmissions (CST) can be devastating [1,2]. As such, understanding the propensity and ability of viral pathogens to cross the species barrier is of vital public health importance. Of particular interest are transmissions that not only “spillover” into a single individual of a new host species, but that result in a virus actually establishing a sustained chain of transmission and becoming endemic in the new host population (“host switching”) [3].

HIV is the product of not just one successful host switch, but a long chain of host switch events [4,5]. There are two human immunodeficiency viruses, HIV-2 and HIV-1. HIV-2 arose from multiple cross-species transmissions of SIV<sub>smm</sub> (simian immunodeficiency virus, *sooty mangabey*) from sooty mangabeys to humans [6–8]. HIV-1 is the result of four independent cross-species transmissions from chimpanzees and gorillas. Specifically, SIV<sub>cpz</sub> was transmitted directly from chimpanzees to humans twice; one of these transmissions generated HIV-1 group M, which is the primary cause of the human pandemic [9]. SIV<sub>cpz</sub> was also transmitted once to gorillas, generating SIV<sub>gor</sub> [10], which was in turn transmitted twice to humans [11].

Looking further back, SIV<sub>cpz</sub> itself was also generated by lentiviral host switching and recombination. Based on the SIV sequences available at the time, early studies identified SIV<sub>mon/-mus/-gsn</sub> (which infect mona, mustached, and greater spot-nosed monkeys, respectively) and SIV<sub>rcm</sub> (which infects red-capped mangabeys) as probable donors [12]. Functional analysis of accessory genes from these putative parental lineages indicate that the specific donors and genomic locations of these recombination event(s) were crucial for enabling what became SIV<sub>cpz</sub> to cross the high species barrier and establish an endemic lineage in hominids [13].

The complex evolutionary history resulting in HIV illustrates the importance of natural history to modern day viral diversity, and although the history leading to HIV is well detailed, broader questions regarding cross-species transmission of primate lentiviruses remain [14]. With over 45 known extant primate lentiviruses, each of which is endemic to a specific host species [4,5,15], we sought to characterize the history of viral transmission between these species to the degree possible given the precision allowed from a limited sample of modern-day viruses.

Here, we utilized phylogenetic inference to reconstruct the evolutionary history of primate lentiviral recombination and cross-species transmission. We assembled datasets from publicly available lentiviral genome sequences and conducted discrete trait analyses to infer rates of transmission between primate hosts. We find evidence for extensive interlineage recombination and identify many novel host switches that occurred during the evolutionary history of lentiviruses. We also find that specific lentiviral lineages exhibit a broad range of abilities to cross the species barrier. Finally, we also examined the origins of each region of the SIV<sub>cpz</sub> genome in greater detail than previous studies to yield a more nuanced understanding of its origins.

## Results

### There have been at least 13 interlineage recombination events that confuse the lentiviral phylogeny

In order to reconstruct the lentiviral phylogeny, we first had to address the issue of recombination, which is frequent among lentiviruses [16]. In the context of studying cross-species

transmission, this is both a challenge and a valuable tool. Evidence of recombination between viral lineages endemic to different hosts is also evidence that at one point in time, viruses from those two lineages were in the same animal (i.e., a cross-species transmission event must have occurred in order to generate the observed recombinant virus). However, this process also results in portions of the viral genome having independent evolutionary—and phylogenetic—histories.

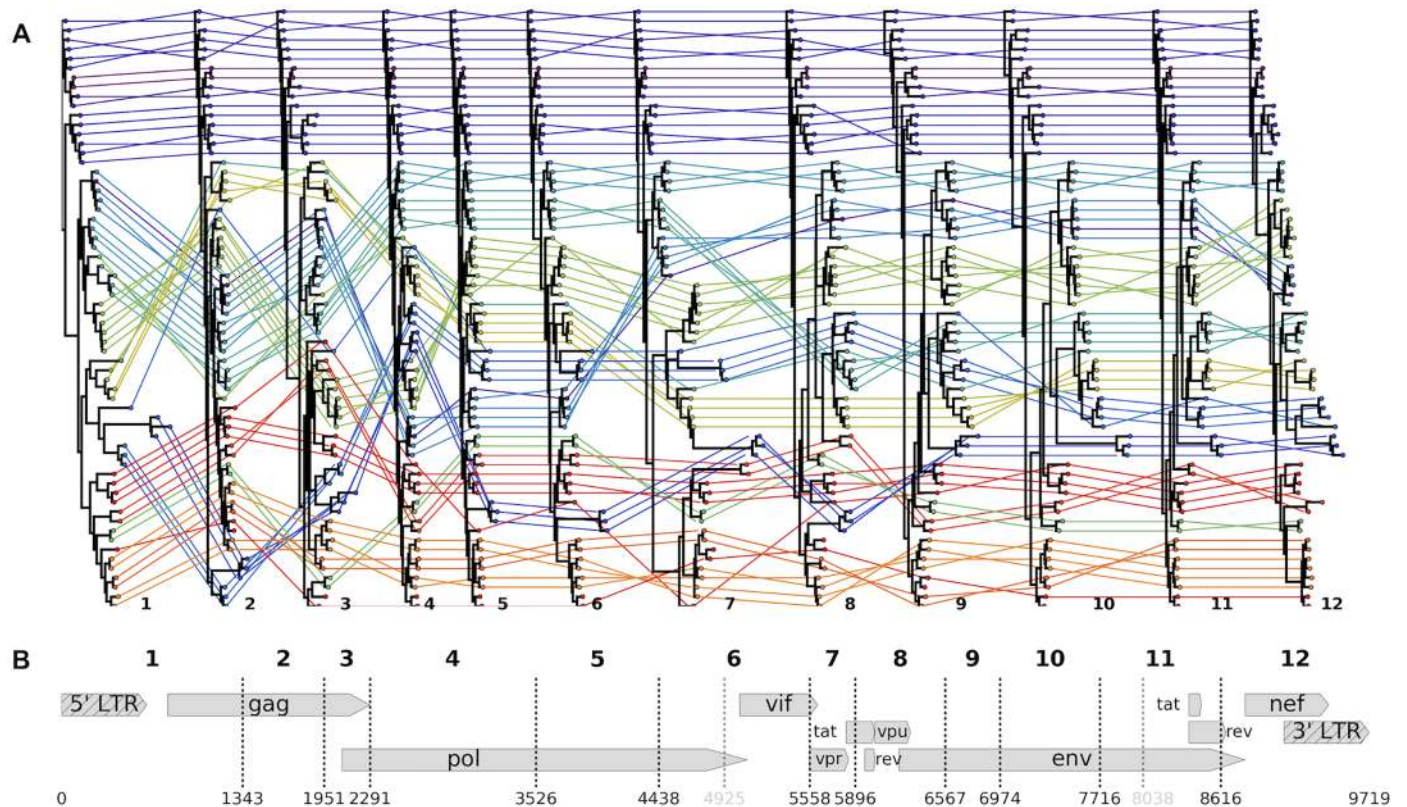
To address the reticulate evolutionary history of SIVs, we set out to identify the extent and nature of recombination between lentiviral lineages. Extensive sequence divergence between lineages masks site-based methods for linkage estimation (S1 Fig). However, topology-based measures of recombination allow for “borrowing” of information across nearby sites, and are effective for this dataset. We thus utilized a phylogenetic model to group segments of shared ancestry separated by recombination breakpoints instantiated in the HyPhy package GARD [17]. For this analysis, we used a version of the SIV compendium alignment from the Los Alamos National Lab (LANL), modified slightly to reduce the overrepresentation of HIV sequences ( $N = 64$ , see Methods) [18]. Importantly, because each virus lineage has only a few sequences present in this alignment, these inferences refer to *inter*-lineage recombination, and not the rampant *intra*-lineage recombination common among lentiviruses.

GARD identified 13 locations along the genome that had strong evidence of inter-lineage recombination (Fig 1). Here, evidence for a particular model is assessed via Akaike Information Criterion (AIC) and differences in AIC between models indicate log probabilities, so that a delta-AIC of 10 between two models would indicate that one model is  $e^{10/2} = \sim 148$  as likely as the other [19]. In our case, delta-AIC values ranged from 154 to 436 for each included breakpoint, indicating that these breakpoints are strongly supported by the underlying tree likelihoods. The 14 resulting segments ranged in length from 351 to 2316 bases; in order to build reliable phylogenies, we omitted two of the less supported breakpoints from downstream analyses, yielding 12 segments ranging in length from 606–2316 bases. We found no evidence to suggest linkage between non-neighboring segments (S2 Fig). While it has been previously appreciated that several lineages of SIV are recombinant products (e.g., [12,20]), the 13 breakpoints identified here provide evidence that there have been at least 13 inter-lineage recombination events during the evolution of SIVs. Identifying these recombination breakpoints allowed us to construct a putatively valid phylogeny for each segment of the genome that shares an internally cohesive evolutionary history.

## Most primate lentiviruses were acquired by cross-species transmissions

We then looked for phylogenetic evidence of cross-species transmission in the tree topologies of each of the 12 genomic segments. For this and all further analyses, we constructed a dataset from all publicly available primate lentivirus sequences, which we curated and subsampled by host and virus lineage to ensure an equitable distribution of data (see Methods). This primary dataset consists of virus sequences from the 24 primate hosts with sufficient data available (5–25 sequences per viral lineage,  $N = 423$ , S3 Fig). Alignments used the fixed compendium alignment as a template (see Methods).

In phylogenetic trees of viral sequences, cross-species transmission appears as a mismatch between the host of a virus and the host of that virus’s ancestor. To identify this pattern and estimate how frequently each pair of hosts has exchanged lentiviruses, we used the established methods for modeling evolution of discrete traits, as implemented in BEAST [21,22]. In our case, the host of each viral sample was modeled as a discrete trait. This is analogous to treating the “host state” of each viral sample as an extra column in an alignment, and inferring the rate of transition between all pairs of host states along with inferring ancestral host states across the

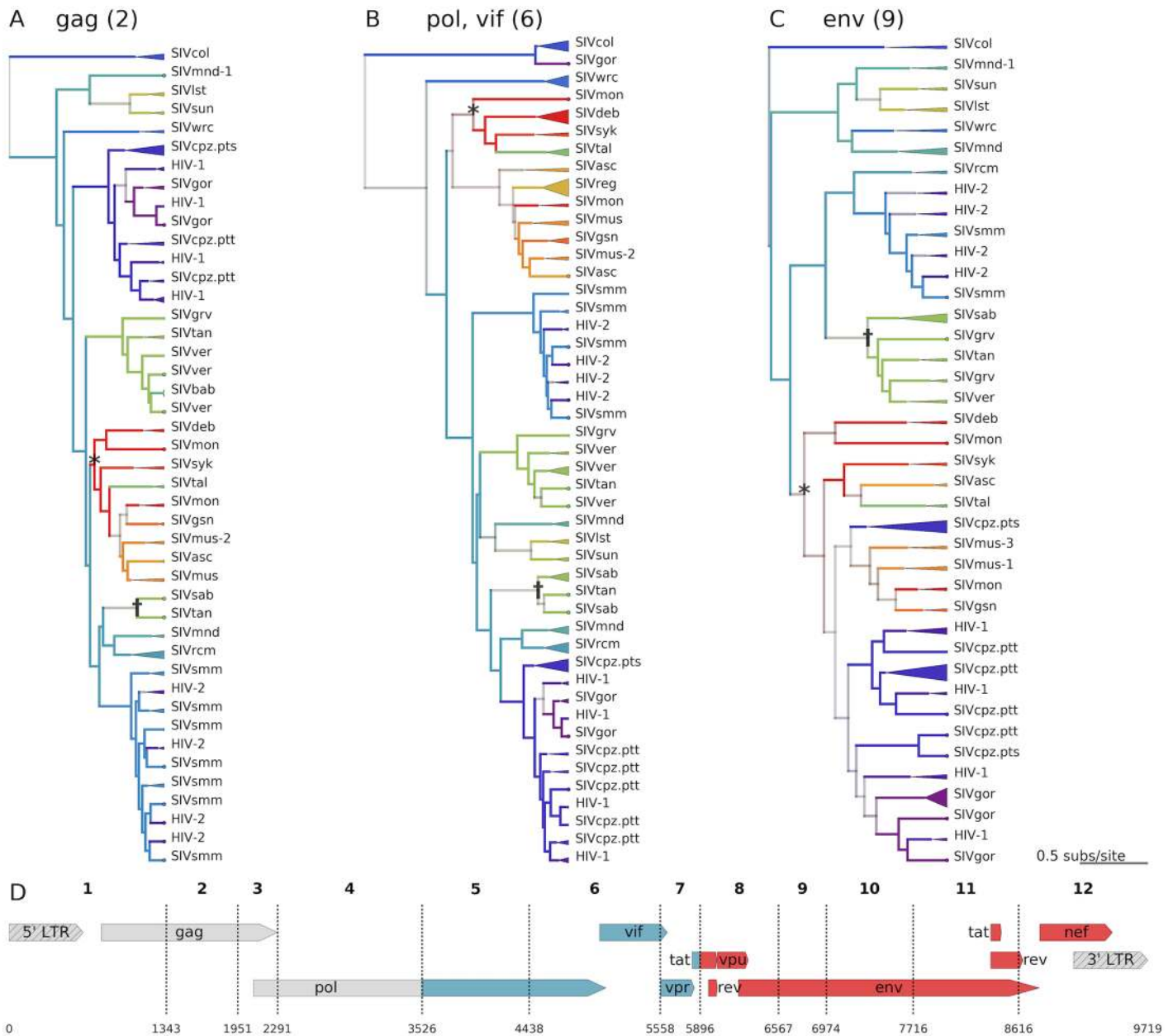


**Fig 1. Inferred interlineage recombination breakpoints and supporting tree topologies.** The SIV LANL compendium, slightly modified to reduce overrepresentation of HIV, was analyzed with GARD to identify 13 recombination breakpoints across the genome (dashed lines in **B**; numbering according to the accepted HXB2 reference genome—accession K03455, illustrated). Two of these breakpoints were omitted from further analyses because they created extremely short fragments (< 500 bases; gray dashes in **B**). For each of the 11 remaining breakpoints used in further analyses, we split the compendium alignment along these breakpoints and built a maximum likelihood tree, displayed in **A**. Each viral sequence is color-coded by host species, and its phylogenetic position is traced between trees. Heuristically, straight, horizontal colored lines indicate congruent topological positions between trees (likely not a recombinant sequence); criss-crossing colored lines indicate incongruent topological positions between trees (likely a recombinant sequence).

<https://doi.org/10.1371/journal.ppat.1006466.g001>

phylogeny. This approach is similar to common phylogeographic approaches that model movement of viruses across discrete spatial regions [23] and has previously been applied to modeling discrete host state in the case of rabies virus [21]. Here, we took a fully Bayesian approach and sought the posterior distribution across phylogenetic trees, host transition rates and ancestral host states. We integrate across model parameters using Markov chain Monte Carlo (MCMC). The resulting model provides phylogenetic trees for each segment annotated with ancestral host states alongside inferred transition rates.

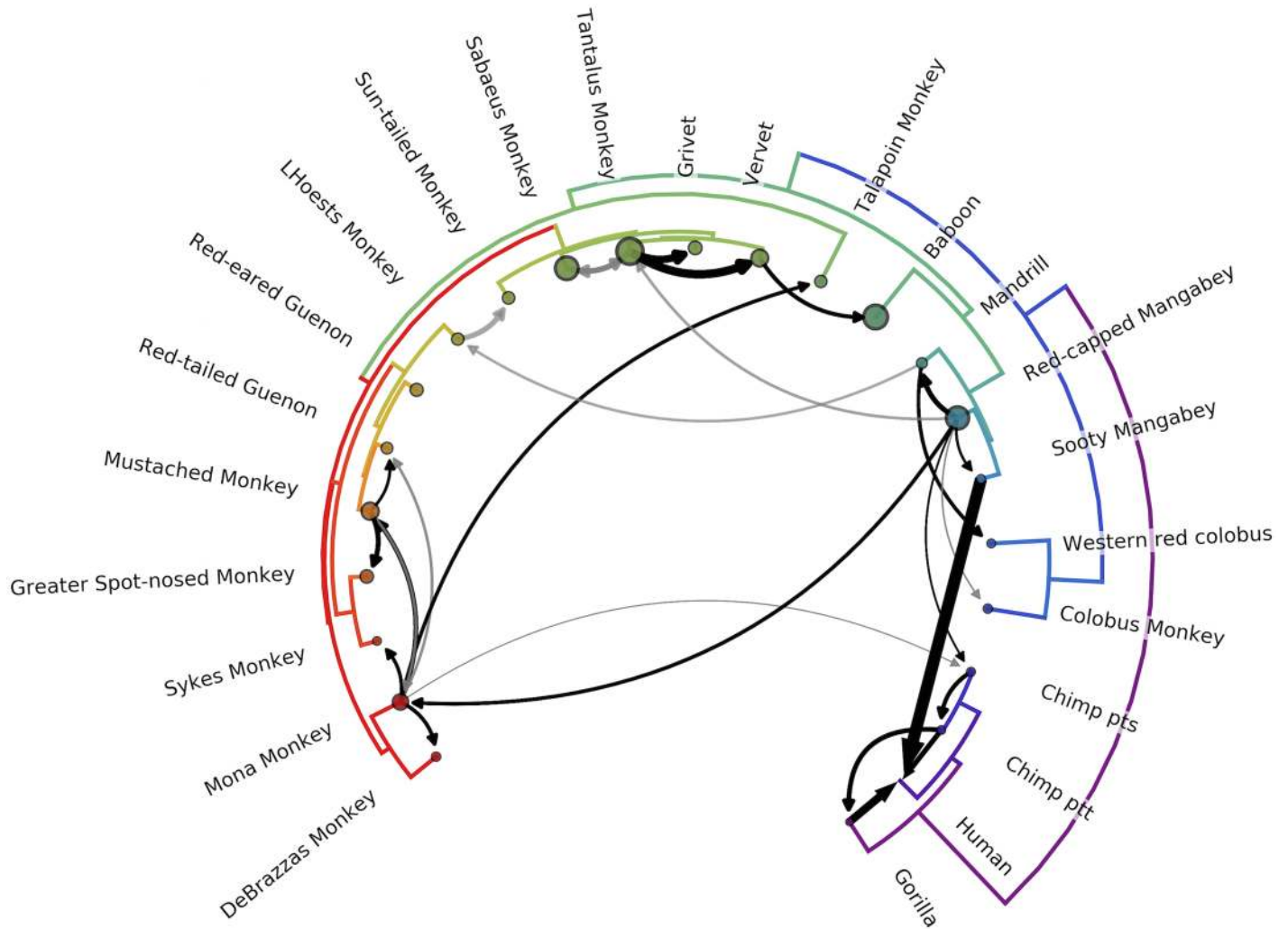
Fig 2 shows reconstructed phylogenies for 3 segments along with inferred ancestral host states. Trees are color coded by known host state at the tips, and inferred host state at internal nodes/branches; color saturation indicates the level of certainty for each ancestral host assignment. A visual example of how the model identifies cross-species transmissions can be seen in the *SIV<sub>mon</sub>/SIV<sub>tal</sub>* clade, which infect mona- and talapoin monkeys, respectively (starred in Fig 2A–2C). Due to the phylogenetic placement of the *SIV<sub>mon</sub>* tips, the internal node at the base of this clade is red, indicating that the host of the ancestral virus was most likely a mona monkey. This contrasts with the host state of the samples isolated from talapoin monkeys (tips in green). These changes in the host state across the tree are what inform our estimates



**Fig 2. Lentiviral phylogenies highlighting the mosaic origins of *SIVcpz* and examples of how CST is inferred from the phylogenies A,B,C.** Bayesian maximum clade credibility (MCC) trees are displayed for segments 2 (*gag*—A), 6 (*int* and *vif*—B), and 9 (*env*—C) of the main dataset (N = 423). Tips are color coded by known host species; internal nodes and branches are colored by inferred host species, with saturation indicating the confidence of these assignments. Monophyletic clades of viruses from the same lineage are collapsed, with the triangle width proportional to the number of represented sequences. An example of likely cross-species transmission is starred in each tree, where the host state at the internal node (red / mona monkeys) is incongruent with the descendent tips' known host state (green / talapoin monkeys), providing evidence for a transmission from mona monkeys to talapoin monkeys. Another example of cross-species transmission of a recombinant virus among African green monkeys is marked with a dagger. D—The genome map of *SIVcpz*, with breakpoints used for the discrete trait analysis, is color coded and labeled by the most likely ancestral host for each segment of the genome.

<https://doi.org/10.1371/journal.ppat.1006466.g002>

of the rate of transmission between host pairs. In total, the support for each possible transmission is derived from both A) whether the transmission is supported across the posterior distribution of phylogenies for a particular segment, and B) whether this is true for multiple genomic segments.



**Fig 3. Network of inferred CSTs of primate lentiviruses.** The phylogeny of the host species' mitochondrial genomes forms the outer circle. Arrows represent transmission events inferred by the model with Bayes' factor (BF)  $\geq 3.0$ ; black arrows have BF  $\geq 10$ , with opacity of gray arrows scaled for BF between 3.0 and 10.0. Width of the arrow indicates the rate of transmission (actual rates = rates  $\times$  indicators). Circle sizes represent network centrality scores for each host. Transmissions from chimps to humans; chimps to gorillas; gorillas to humans; sooty mangabeys to humans; sabaeus to tantalus; and vervets to baboons have been previously documented. To our knowledge, all other transmissions illustrated are novel identifications.

<https://doi.org/10.1371/journal.ppat.1006466.g003>

Notably, the tree topologies are substantially different between segments, which emphasizes both the extent of recombination and the different evolutionary forces that have shaped the phylogenies of individual portions of the genome. In all segments' trees, we also see frequent changes in the host state between internal nodes (illustrated as changes in color going up the tree), suggestive of frequent ancient cross-species transmissions. On average, primate lentiviruses switch hosts once every 6.25 substitutions per site per lineage across the SIV phylogeny.

The cross-species transmission events inferred by the model are illustrated in Fig 3, with raw rates and Bayes factors (BF) in S4 Fig. As shown, the model correctly infers nearly all pairs of hosts with previously identified (to our knowledge) CST events [7,9,11,12,24,25], with the exception of the putative CST from sooty mangabeys to sabaeus monkeys reported by [20] (see Discussion). Importantly, we also identify 14 novel cross-species transmission events with strong statistical support (cutoff of BF  $\geq 10.0$ ). Each of these transmissions is clearly and robustly supported by the tree topologies (all 12 trees are illustrated in S5 Fig).

To control for sampling effects, we repeated the analysis with a supplemental dataset built with fewer hosts, and more sequences per host (15 host species, subsampled to 16–40 sequences per viral lineage,  $N = 510$ ), and see consistent results. As illustrated in [S6–S8 Figs](#), we find qualitatively similar results. When directly comparing the average indicator values, host state transition rates, and BF values between analyses, the results from the main and supplemental datasets are strongly correlated, indicating robust quantitative agreement between the two analyses ([S9 Fig](#)). We also see similar agreement between replicates when we regenerate the main dataset via independent sampling draws (see online repository).

Taken together, these results represent a far more extensive pattern of CST among primate lentiviruses than previously described [[4,5](#)]; nearly every primate clade has at least one inbound, robustly supported viral transmission from another clade. We thus conclude that the majority of lentiviruses have arisen from a process of host switching, followed by a combination of intraclade host switches and host-virus coevolution.

### Primate hosts may serve as either sources or sinks of SIVs

While most SIVs are the product of ancient recombination and host switching, the distribution of these host switches is not uniform; when we assess the network centrality of each virus we find a broad range ([Figs 3, S7 and S11](#), as node size), indicating some hosts act as sources in the SIV transmission network and other hosts act as sinks. From this, we infer that some viruses have either had greater opportunity or have a greater ability to cross the species barrier than others.

In particular, the SIVs from the four closely related species of African green monkeys (*SIVsab*, *SIVtan*, *SIVver*, *SIVgrv*; collectively, *SIVagm*) appear to exchange viruses with other host species frequently ([Fig 3](#), 12' o'clock). An example of *SIVagm* CST events can be seen in the tree topologies from *gag*, *prot*, *reverse transcriptase (RT)*, and *vif* ([Figs 2 and S5](#), segments 2, 3, 4, & 6). Here, *SIVtan* isolates reported by Ayouba *et al.* [[26](#)] (denoted with † in [Fig 2](#)) clearly cluster with *SIVsab*, in a distant part of the phylogeny from the rest of the *SIVagm* viruses (including the majority of *SIVtan* isolates). For all other segments, however, the *SIVagms* cluster together. We thus concur with the conclusion of Ayouba *et al.* that these samples represent a recent spillover of *SIVsab* from sabaes monkeys to tantalus monkeys, and the model appropriately identifies this transmission.

Contrastingly, previous studies of the lentiviral phylogeny have noted that *SIVcol* is typically the outgroup to other viral lineages, and have hypothesized that this may implicate *SIVcol* as the “original” primate lentivirus [[27](#)]. We find this hypothesis plausible, but the evidence remains inconclusive. For the majority of genomic segments, we also observe *SIVcol* as the clear outgroup ([Figs 2 and S5](#)). In contrast, for portions of *gag/pol* (segments 3 and 4) and some of the accessory genes (segment 7), we find that there is not a clear outgroup. For these segments, many other lineages of SIV are just as closely related to *SIVcol* as they are to each other. However, with the occasional exception of single heterologous taxa with poorly supported placement, *SIVcol* remains a monophyletic clade ( $N = 16$ ), and does not intercalate within the genetic diversity of any other lineage in our dataset. Based on these collective tree topologies, our model does not identify strong evidence for any specific transmissions out of colobus monkeys, and identifies only a single, weakly supported inbound transmission (likely noise in the model caused by the fact that red-capped mangabeys are the marginally supported root host state; see below). This is consistent with previous findings that the colobinae—in a different genus than most of the *Cercopithecus* primates in our dataset—have a unique variant of the *APOBEC3G* gene, which is known to restrict lentiviral infection and speculated to be a barrier to cross-species transmission [[27](#)]. These

observations generally support the idea of *SIVcol* as having maintained a specific relationship with its host over evolutionary time.

Additionally, while most host species carry only one lineage of SIV, mandrils and mustached monkeys carry 2 and 3 lineages of SIV, respectively [28–31]. In agreement with these previous studies, *SIVmnd-1* and *SIVmnd-2* do not always cluster together in the phylogeny; the same is true for *SIVmus-1*, *SIVmus-2*, and *SIVmus-3*, indicating that each of these viral lineages likely has a unique origin. This stands in stark contrast to baboons, which have only been infected by an SIV via a single documented spillover event [24].

Collectively, these examples demonstrate that the nature of the host-virus relationship is highly variable for primate lentiviruses, with some viruses switching hosts often while others putatively maintain strict host specificity. Likewise, while some hosts have acquired multiple SIV lineages, most are infected by only one SIV, or do not have an endemic SIV.

### *SIVcpz*, the precursor to HIV-1, has a mosaic origin with unknown segments

Unlike *SIVcol*, *SIVcpz* appears to be the product of multiple CSTs and recombination events. *SIVcpz* actually encompasses two viral lineages: *SIVcpzPtt* infects chimpanzees of the subspecies *Pan troglodytes troglodytes*, and *SIVcpzPts* infects chimpanzees of the subspecies *Pan troglodytes schweinfurthii* [32]. There are two additional subspecies of chimpanzees that have not been found harbor an SIV despite extensive surveys, suggesting that *SIVcpzPtt* was acquired after chimpanzee speciation [25]. Both this previous work and our own results support the hypothesis that *SIVcpz* was later transmitted from one chimpanzee subspecies to the other, and *SIVcpzPtt* is the only *SIVcpz* lineage that has crossed into humans. Given the shared ancestry of the two lineages of *SIVcpz*, we use “*SIVcpz*” to refer specifically to *SIVcpzPtt*.

Based on the lentiviral sequences available in 2003, Bailes et al [12] suggested that the *SIVcpz* genome is a recombinant of just two parental lineages. *SIVrcm* (which infects red-capped mangabeys) was identified as the 5' donor, and an SIV from the *SIVmon/-mus/-gsn* clade (which infect primates in the *Cercopithecus* genus) was identified as the 3' donor. Since the time of this previous investigation many new lentiviruses have been discovered and sequenced. In incorporating these new data, we find clear evidence that the previous two-donor hypothesis may be incomplete.

The tree topologies from *env* in the 3' end of the genome (segments 8–11) support the previous hypothesis [12] that this region came from a virus in the *SIVmon/-mus/-gsn* clade. These viruses form a clear sister clade to *SIVcpz* with high posterior support (Fig 2C and 2D). We find strong evidence for transmissions from mona monkeys (*SIVmon*) to mustached monkeys (*SIVmus*), and from mustached monkeys to greater spot-nosed monkeys (*SIVgsn*) (see Discussion of potential coevolution below). We also find more evidence in support of a transmission from mona monkeys to chimpanzees than from the other two potential donors, but more sampling is required to firmly resolve which of these viruses was the original donor of the 3' end of *SIVcpz*.

We find phylogenetic evidence to support the previous hypothesis [12,13] that the *integrase* and *vif* genes of *SIVcpz* (segments 4–6) originated from *SIVrcm*; however, we find equally strong evidence to support the competing hypothesis that *pol* came from *SIVmnd-2*, which infects mandrils (Fig 2B and 2D). In these portions of the genome, *SIVmnd-2* and *SIVrcm* together form a clear sister clade to *SIVcpz*. The *vpr* gene, in segment 7, is also closely related to both *SIVrcm* and *SIVmnd-2*, but this sister clade also contains *SIVsmm* from sooty mangabeys. Notably, we infer a transmission from red-capped mangabeys to mandrils, but we cannot determine whether this portion of the *SIVcpz* genome was acquired directly from *SIVrcm* or from *SIVmnd-2*.



Interestingly, we do *not* find evidence to support either *SIVrcm/mnd-2* or *SIVmon/mus/gsn* as the donor for the 5' most end of the genome (segments 1–5), including the 5' *LTR*, *gag*, and *RT* genes. This is also true for the 3' *LTR* (segment 12). *SIVcpz* lacks a clear sister clade or ancestor in this region, and *SIVrcm* groups in a distant clade; we therefore find no evidence to suggest that an ancestor of an extant *SIVrcm* was the parental lineage of *SIVcpz* in the 5' most end of the viral genome as previously believed (Fig 2A and 2D). This may support the possibility of a third parental lineage, or a number of other plausible scenarios (discussed below).

## Discussion

### Limitations and strengths of the model

**Additional sampling is required to fully resolve the history of CST among lentiviruses.** In addition to the 14 strongly supported novel transmissions ( $BF \geq 10$ ) described above, we also find substantial evidence for an additional 8 possible novel transitions, but with lower support ( $BF \geq 3$ ) (Figs 3, S4). These transmissions are more difficult to assess, because many of them are inferred on the basis of just a few “outlier” tips of the tree that group apart from the majority of viral samples from the same lineage. In each case, the tips' phylogenetic position is strongly supported, and the primary literature associated with the collection of each of these “outlier” samples clearly specifies the host metadata. However, due to the limited number of lentiviral sequences available for some hosts, we are unable to control for sampling effects for some of these lower-certainty transmissions. We report them here because it is unclear whether these outliers are the result of unidentified separate endemic lineages, one-time spillovers from other hosts, or species misidentification during sample collection. It is also important to note that while some of these less-supported transmissions are potentially sampling artifacts, many of them may be real, and may be less supported simply because they lack the requisite available data for some genome segments.

Ultimately, far more extensive sampling—specifically, obtaining more full-length sequences from undersampled lineages—of primate lentiviruses is required in order to resolve these instances. We included only sequences at least 500 bases long; each taxon may contribute more informative sites to some segments than to others. When splitting the master alignment along breakpoints, we removed from each segment any taxon that had no informative bases. However, for each segment, there were between 0 and 13 (mean: 3.6) taxa that had some informative sites, but were very short (<100 informative sites). Statistically, these short taxa contribute little information, and are placed in the topology for each segment with high uncertainty. This phylogenetic uncertainty is then propagated forward to the discrete traits model, meaning that these short taxa should not statistically influence our results in any meaningful way. Notably, though, their removal does result in extensive technical challenges (this “pruned” dataset results in poor mixing and rather divergent results, seen in S10–S12 Figs). Given the high congruence between results from independent sampling replicates of the main dataset and from an alternative sampling scheme, we believe this to be a technical issue, rather than reflecting true differences. However, this issue does further emphasize the importance of additional sampling in fully resolving the natural history of SIVs.

**Most lentiviruses were originally acquired by CST and have since coevolved with their hosts.** Some of these “noisier” transmission inferences, particularly within the same primate clade, may be the result of coevolution, ie. lineage tracking of viral lineages alongside host speciation. Within the model, viral jumps into the *common ancestor* of two extant primate species appear as a jump into *one* of the extant species, with a secondary jump between the two descendants. For example, the model infers a jump from mona monkeys into mustached monkeys, with a secondary jump from mustached monkeys into their sister species, red-tailed

guenons (Fig 3). Comparing the virus and host phylogenies, we observe that this host tree bifurcation between mustached monkeys and red-tailed guenons is mirrored in the virus tree bifurcation between *SIV<sub>mus</sub>* and *SIV<sub>asc</sub>* for most segments of the viral genome (Figs 2 and 3). This heuristically suggests that the true natural history may be an ancient viral transmission from mona monkeys into the common ancestor of mustached monkeys and red-tailed guenons, followed by host/virus coevolution during primate speciation to yield *SIV<sub>mus</sub>* and *SIV<sub>asc</sub>*.

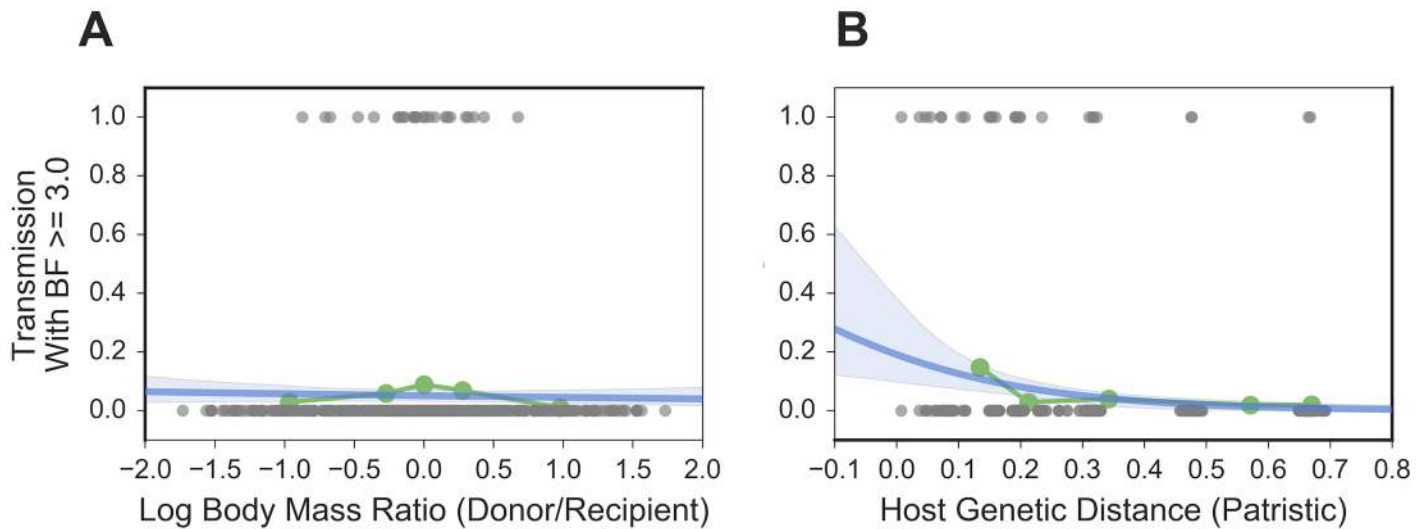
The possibility of virus/host coevolution means that while we also observe extensive host switching *between* primate clades, many of the observed jumps *within* a primate clade may be the result of host-virus coevolution. However, we also note that the species barrier is likely lower between closely related primates, making it challenging to rigorously disentangle coevolution vs. true host switches within a primate clade [33].

**The model propagates and accounts for residual uncertainty from the recombination analyses.** The deep phylogenies and extensive sequence divergence between SIV lineages makes any assessment of recombination imperfect. Our analysis aims to 1) place a lower bound on the number of interlineage recombination events that must have occurred to explain the observed extant viruses, and 2) use this understanding to construct a model of CST among these viruses. As the most well developed package currently available for topology-based recombination analysis, GARD was an appropriate choice to identify in broad strokes the extent and nature of recombination among SIVs. Some (though not all) of the remaining uncertainty as to the exact location of breakpoints is represented within the posterior distribution of trees for each segment, and is thus propagated and accounted for in the discrete traits model (inferences of CST). Most other studies of SIV evolutionary history simply split the phylogeny along gene boundaries or ignore recombination (e.g., [5,12,33]). Thus, while there is still some remaining uncertainty in our recombination analyses, these results still represent a major step forward in attempting to systematically assess recombination among all extant SIV lineages and to incorporate it into the phylogenetic reconstruction.

## Cross-species transmission is driven by exposure and constrained by host genetic distance

Paleovirology, biogeography, and statistical models of lentiviral evolution estimate that primate lentiviruses share a common ancestor approximately 5–10 million years ago [27,34–36]. This, along with the putative viral coevolution during primate speciation, suggests that many of these transmissions were ancient, and have been acted on by selection for millions of years. Thus, given that the observed transmissions almost exclusively represent evolutionarily successful host switches, it is remarkable that lentiviruses have been able to repeatedly adapt to so many new host species. In the context of this vast evolutionary timescale, however, we conclude that while lentiviruses have a far more extensive history of host switching than previously understood, these events remain relatively rare overall.

As noted above, our results illustrate that some SIVs cross the species barrier more readily than others, and some primate host species become infected with new viral lineages more commonly than others. This is likely governed by both ecological and biological factors. Ecologically, frequency and form of exposure are likely key determinants of transmission [3], but these relationships can be difficult to describe statistically. For example, many primates are chronically exposed to many exogenous lentiviruses through predation [5,15,37]. Using log body mass ratios [38] as a proxy for predation, we do not see a statistically significant association between body mass ratio and non-zero transmission rate (Fig 4A, blue;  $p = 0.678$ , coef. 95% CI [-0.311, 0.202]). We believe the lack of signal is likely due to the imperfect proxy,



**Fig 4. Logistic regressions of body mass ratios (a proxy for predation) and host genetic distance on the probability of CST.** For each pair of host species, we (A) calculated the log ratio of their average body masses and (B) found the patristic genetic distance between them (from a maximum-likelihood tree of mtDNA). To investigate the association of these predictors with cross-species transmission, we treated transmission as a binary variable: 0 if the Bayes factor for the transmission (as inferred by the discrete traits model) was < 3.0, and 1 for a Bayes factor  $\geq$  3.0. Each plot shows raw predictor data in gray; the quintiles of the predictor data in green; and the logistic regression and 95% CI in blue.

<https://doi.org/10.1371/journal.ppat.1006466.g004>

although it is also possible that predator-prey relationships do not strongly structure the CST network. It is also likely that geographic overlap and habitat similarity are ecological determinants of SIV CST, but modern primate habitats are likely very different since the time that these transmissions actually occurred.

Biologically, increasing host genetic distance has a clear negative association with the probability of cross-species transmission (Fig 4B, blue,  $p < 0.001$ , coef. 95% CI [-7.633, -2.213]). Importantly, as already discussed, the strength of this association may be inflated by instances of lineage tracking (virus/host cospeciation). However, it is well established that increasing host genetic distance is associated with a higher species barrier [33]. As previously documented in the literature we expect this is due to several factors, such as the divergence of host restriction factor genes, which are key components of the innate immune system (reviewed in [39]) and differences in host cell receptor phenotypes (e.g., [40–42]). Functional assays of these host phenotypes against panels of SIVs, while outside the scope of this study, will be important for further identifying the molecular bases of the species barriers that have led to the transmission patterns identified here.

## Origins of HIV-1 and HIV-2

**Epidemiological factors were key to the early spread of HIV.** Understanding the underlying dynamics of lentiviral CST provides important ecological context to the transmissions that generated the HIV pandemic. As discussed above, our results support a view of lentiviral cross-species transmission as a rare event. Notably, only two lentiviruses have crossed the high species barrier from Old World monkeys into hominids: SIV<sub>smm</sub> and the recombinant SIV<sub>cpz</sub>. Both HIV-1 and HIV-2 have arisen in human populations in the last century [5,43]. While it is possible that this has occurred by chance, even without increased primate exposure or other risk factors, we nevertheless find it striking that humans would acquire two exogenous viruses within such a short evolutionary timespan.

Examining this phenomenon more closely, the history of HIV-2 is enlightening. HIV-2 has been acquired through at least 8 *independent* spillover events from sooty mangabeys [5]. Notably, 6 of these transmissions have resulted in only a single observed infection (spillovers) [7,8,44]; only 2 of these events have established sustained transmission chains and successfully switched hosts to become endemic human pathogens [45–47]. This pattern, as well as serology-based reports of other limited spillovers of SIVs into humans [28,48], suggest that there have been many isolated introductions of lentiviruses into humans over the past 200,000 years. However, these other viral exposures did not result in new endemic human pathogens either because of species-specific immune barriers, non-conducive epidemiological conditions, or a combination thereof. The rapid and repeated emergence of HIV-1 and HIV-2 is on a timescale more congruent with changes in epidemiological conditions than mammalian evolution, perhaps emphasizing the importance of the concurrent changes in human population structure and urbanization in facilitating the early spread of the epidemic [43]. Significantly, though, this also highlights the importance of careful public health surveillance and interventions to prevent future epidemics of zoonotic viruses.

**The exact origins of SIV<sub>cpz</sub> may not be identifiable.** The ancestry of SIV<sub>cpz</sub> appears to be tripartite: the unknown ancestry of the 5' end; the putatively SIV<sub>rcm</sub> or SIV<sub>mnd-2</sub> derived *int* and *vif* genes; and the putatively SIV<sub>gsn/mon/mus</sub> derived 3' end of the genome. For any of these three portions of the genome, there are multiple evolutionary histories supported by available sequence data. However, it is possible that further sampling of lentivirus lineages (both known and currently undiscovered) will be able to definitively resolve the ancestry of SIV<sub>cpz</sub>. Alternatively, it may be that the ancestral virus(es) that gave rise to any of these three portions is extinct [49]. In the case of the last two portions of the SIV<sub>cpz</sub> genome, it may be that the common ancestor of these putative genetic donors (SIV<sub>rcm/mnd-2</sub> and SIV<sub>mon/mus/gsn</sub>, respectively) was the true source. However, it is also a distinct possibility that SIV<sub>cpz</sub> has sufficiently diverged since its acquisition by chimpanzees such that its history is obscured.

**Evolutionary time obscures the identity of the “original” primate lentivirus.** Among primates, our results clearly illustrate that the vast majority of lentiviral lineages were originally acquired by cross-species transmission. It is intriguing to speculate as to which virus was the “original” source of all of these lineages. Because of its consistent position as the outgroup of primate lentiviral trees, it has been hypothesized [27] that SIV<sub>col</sub> was this original lentivirus among primates. While SIV<sub>col</sub> is certainly the most evolutionary isolated extant lentivirus that has been sampled to date, this does not definitively place it as the ancestral lentivirus. Alternative scenarios (also noted by [27,49]) include an extinct original lentiviral lineage (and/or primate host species) or an unsampled ancestral lentivirus. It is also plausible that another known extant lentivirus was the “original” lineage, but has diverged and/or recombined to such an extent that its origins are obscured.

## Conclusions

Here, we have shown that lentiviruses have a far more extensive history of host switching than previously described. Our findings also demonstrate that the propensity of each lentiviral lineage to switch between distant hosts, or to spillover among related hosts, is highly variable. In examining specific lineages, our findings are consistent with the prevalent hypothesis that SIV<sub>col</sub> has evolved in isolation from other SIVs. Contrastingly, we have also demonstrated that the mosaic origins of SIV<sub>cpz</sub> are far more complex than previously recognized; the currently available sequence data is unable to resolve the ancestry of nearly half of the SIV<sub>cpz</sub> genome. Together, our analyses move closer to a full understanding of the pattern of cross-species transmission among primate lentiviruses, but additional efforts to obtain high quality viral

genome sequences from under sampled lineages will be necessary to fully resolve the natural history of these viruses.

## Methods

All datasets, config files, documentation, and scripts used in this analysis or to generate figures are available publicly at <<https://github.com/blab/siv-cst>>.

## Datasets & alignments

Lentiviral genomes are translated in multiple reading frames; we therefore utilized nucleotide sequence data for all analyses.

**Recombination analysis dataset.** For all recombination analyses (GARD,  $R^2$ , rSPR), we used the 2015 Los Alamos National Lab (LANL) HIV/SIV Compendium [18]. The compendium is a carefully curated alignment of high-quality, representative sequences from each known SIV lineage and each group of HIV-1 and HIV-2. We reduced the overrepresentation of HIV in this dataset, but maintained at least one high quality sample from each group of HIV. In total, this dataset contains 64 sequences from 24 hosts (1–10 sequences per host). Maximum likelihood trees for each segment—used for the rSPR analysis and displayed in Fig 1—were built with RAxML v.8.2.9 [50] with the rapid bootstrapping algorithm under a GTR model with 25 discrete bins of site to site rate variation and were rooted to SIV<sub>col</sub> for display.

**Main & supplemental datasets.** Primate lentiviral sequences were downloaded from the comprehensive LANL HIV sequence database [18]. Sequences from lineages known to be the result of artificial cross-species transmissions (SIV<sub>mac</sub>, -*stm*, -*mne*, and -*wcm*) were excluded. We also excluded any sequences shorter than 500 bases or that were flagged as problematic by standard LANL criteria. We grouped host subspecies together except for cases where there is a known specific relationship between host subspecies and virus lineage (chimpanzees and African green monkeys). To construct datasets with a more equitable distribution of sequences per host, we preferentially subsampled sequences from the LANL Compendium, followed by samples isolated from Africa (more likely to be primary sequences), and finally supplementing with samples isolated elsewhere (excluding experimentally generated sequences). For humans, mandrils and mustached monkeys, which are host to 2, 2 and 3 distinct viral lineages, respectively, we allowed a few additional sequences (if available) to represent the full breadth of documented lentiviral diversity. The “main” dataset consists of 24 host species, with 5–31 sequences per host (total  $N = 422$ ). As an alternative dataset to control for sampling bias and data availability, we also constructed a “supplemental” dataset with just 15 hosts but with more viral sequences per host (16–40 sequences per lineage,  $N = 510$ ).

**Alignments.** Alignments were done with the L-INSI algorithm implemented in mafft v7.294b [51]; the Compendium alignment was held fixed, with other sequences aligned to this template. Insertions relative to the fixed compendium were discarded. This alignment was then split along the breakpoints identified by GARD to yield the segment-specific alignments. Sequences that contained no bases for a given segment were removed; the “pruned” dataset is identical to the “main” dataset, but here we also removed sequences with fewer than 100 ungapped bases for a given segment.

## Recombination analyses

**Topology-based analysis.** Each portion of the genome was analyzed with the Genetic Algorithm for Recombination Detection (GARD), implemented in HyPhy v.2.2.0 [17], with a nucleotide model selected by HyPhy’s NucModelCompare package (#012234) and general discrete distribution (3 bins) of site variation.

Computational intensity was eased by analyzing the recombination dataset in 3kb long portions, with 1kb overlaps on either end (e.g., bases 1:3000, 2000:5000, 4000:7000, etc.). To control for sites' proximity to the ends of the genomic portion being analyzed, this was repeated with the windows offset (e.g., bases 1:2500, 1500:4500, 3500:6500, etc.). In total, this resulted in every site of the alignment being analyzed at least two-fold, with at least one of these replicates providing 500–1500 bases of genomic context on either side (other than at the very ends of the total alignment). Disagreement between window-offset replicates for a given breakpoint were minimal and almost always agreed within a few bases, with two exceptions: offset replicates for the breakpoint between segments 7 and 8 disagreed by 529 bases, and offset replicates for the breakpoint between 8 and 9 disagreed by 263 bases. In these instances, we used the average site placement.

**Sitewise linkage analysis.** Biallelic sites were identified across the genome (ignoring gap characters and polymorphisms present at <5%). These biallelic sites were compared pairwise to generate an observed and expected distribution of haplotypes (combinations of alleles between the two sites), and assessed with the statistic  $R^2 = \chi^2 / (d \times N)$ , where  $\chi^2$  is chi-square,  $d$  is the degrees of freedom, and  $N$  is the number of haplotypes for this pair of sites [52]. This statistic follows the canonical interpretation of  $R^2$ , i.e., if the allele at site 1 is known, how well does it predict the allele at site 2 (0 indicating no linkage between sites, and 1 indicating perfect linkage).

**Segment linkage analysis.** Segment linkage was assessed by comparing the similarity of tree topologies between segments. This was done with the pairwise method in the Rooted Subtree-Prune-and-Regraft (rSPR) package [53], which measures the number of steps required to transform one topology into another. Segment pairs with similar topologies have lower scores than segments with less similar topologies.

## Phylogenies & discrete trait analysis

**Empirical tree distributions.** For each segment alignment, a posterior distribution of trees was generated with BEAST v. 1.8.2 under a general time reversible substitution model with gamma distributed rate variation and a strict molecular clock [54]. We used a Yule birth-death speciation model tree prior [55]; all other priors were defaults. Trees were estimated using a Markov chain Monte Carlo (MCMC), and convergence was determined by visually inspecting the trace in Tracer v. 1.6.0 [56]. MCMC chain parameters and ESS values were as follows.

**“Main” dataset:** 25 million steps, sampled every 15,000 states, 10% burnin removed. Posterior distribution of ~1600 trees per segment. All but two effective sample size (ESS) values (segment 2: AG substitution rate [ESS = 164] and frequencies 4 [ESS = 189]) were well over 200.

**“Pruned” dataset:** 65 million steps, sampled every 15,000 states, 10% burnin removed. Posterior distribution of ~3900 trees per segment.

**“Resampled” dataset:** 65 million steps, sampled every 15,000 states, 10% burnin removed. Posterior distribution of ~3900 trees per segment. All ESS values except for the AG substitution rate in segment 2 (ESS = 190) were well above 200.

**Discrete trait analysis.** These tree distributions were used to estimate the transmission network. As in Faria *et al.* [21], we model hosts as states of a discrete trait, and model cross-species transmission as a stochastic diffusion process among  $n$  host states. We use a non-reversible state transition matrix with  $n \times (n-1)$  individual transition parameters [57]. We also utilize standard methodology in using a Bayesian stochastic search variable selection process to encourage a sparse network, implemented as in [22]. An exponential distribution with mean = 1.0 was used as a prior on each of the pairwise rate parameters (552 in total for the

main and pruned datasets with 24 hosts; 210 parameters in total for the supplemental dataset with 15 hosts). The prior placed on the *sum* of the binary indicator variables corresponding to each pairwise rate parameter (i.e., the number of transitions that are non-zero) was an exponential distribution with mean = 20–23. Convergence was again assessed by visually inspecting the log files in Tracer. MCMC chain parameters and ESS values were as follows.

**“Main” dataset:** 25 million steps, sampled every 5,000 states, 5 million states discarded as burnin.

**“Pruned” dataset:** decreased phylogenetic noise in the empirical tree distributions for this dataset led to narrow tree distributions and poor mixing (but clear convergence). We thus ran 40 parallel chains of 25–35 million steps each, sampled every 20,000 states (trees sampled every 50,000 states). We discarded 10 million steps of each chain as burnin and concatenated the remaining states.

**“Resampled” dataset:** 45 million steps, sampled every 5,000 steps, 20 million steps discarded as burnin.

For the main and supplemental datasets, more than 97% of the rate, indicator, and actualRate (stepwise rate $\times$ indicator values) parameters, and all other parameters, had an ESS well over 200 (most > 1000). The pruned dataset had a posterior ESS of 677, but the component tree likelihood ESS values ranged from 57–287; 91% of the rate, indicator, and actualRate parameters had an average ESS value > 200.

Statistical support for each transmission is summarized as a Bayes factor (BF), calculated by comparing the posterior and prior odds that a given rate is non-zero (i.e., that there has been *any* transmission between a given pair of hosts) [22]. The ancestral tree likelihoods of each of the 12 tree distributions contribute equally to the inference of a shared transmission rate matrix. However, not every lineage has recombined along every breakpoint, which means that the tree likelihoods from each segment are not fully statistically independent. Thus, we report conservative estimates of BF by dividing all BF values by 12.

## Supporting information

**S1 Fig. Heatmap of  $R^2$ , a pairwise measure of genetic linkage between sites.** For pairs of biallelic sites (ignoring rare variants),  $R^2$  was used to estimate how strongly the allele in one site predicts the allele in the second site, with values of 0 indicating no linkage and 1 indicating perfect linkage. The mean value of  $R^2$  was 0.044, indicating very low levels of linkage overall. (TIF)

**S2 Fig. Heatmap of rSPR scores estimating topological similarity between segments of the SIV genome.** The alignment used for GARD analyses (LANL compendium with HIV overrepresentation reduced) was split along the breakpoints identified by GARD to yield the 12 genomic segments, and a maximum likelihood tree was constructed for each. The number of steps required to turn one tree topology into another was assessed for each pair of trees with the Rooted Subtree-Prune-and-Regraft (rSPR) package. Segment pairs with similar topologies have lower scores than segments with less similar topologies. (TIF)

**S3 Fig. Distribution of the number of sequences per host included in analyses. A:** All available high-quality lentivirus sequences were randomly subsampled up to 25 sequences per host for the main dataset. We included the 24 hosts with at least 5 sequences available in this dataset. **B:** For the supplemental dataset, we randomly subsampled up to 40 sequences per host, and included the 15 hosts with at least 16 sequences available in this dataset. For both datasets, a small number of additional sequences were permitted for the few hosts that are infected by

multiple viral lineages in order to represent the full breadth of known genetic diversity of lentiviruses in each host population.

(TIF)

**S4 Fig. Actual rates and Bayes factors for main dataset discrete trait analyses.** Values for the asymmetric transition rates between hosts, as estimated by the CTMC, were calculated as rate  $\times$  indicator (element-wise for each state logged). We report the average posterior values above. Bayes factors represent a ratio of the posterior odds / prior odds that a given actual rate is non-zero. Because each of the 12 segments contributes to the likelihood, but they have not evolved independently, we divide all Bayes factors by 12 and report the adjusted values above (and throughout the text).

(TIF)

**S5 Fig. Maximum clade credibility trees for each of the 12 GARD-identified genomic segments of the lentiviral genome (main dataset).** Tips are color coded by known host state; branches and internal nodes are color coded by inferred host state, with color saturation indicating the confidence of these assignments. Monophyletic clades of viruses from the same lineage are collapsed, with the triangle width proportional to the number of represented sequences.

(TIF)

**S6 Fig. Actual rates and Bayes factors for "supplemental" dataset discrete trait analyses.**

Values for the asymmetric transition rates between hosts, as estimated by the CTMC, were calculated as rate  $\times$  indicator (element-wise for each state logged). We report the average posterior values above. Bayes factors represent a ratio of the posterior odds / prior odds that a given actual rate is non-zero. Because each of the 12 segments contributes to the likelihood, but they have not evolved independently, we divide all Bayes factors by 12 and report the adjusted values above (and throughout the text).

(TIF)

**S7 Fig. Network of inferred CSTs of primate lentiviruses (supplemental dataset).** The phylogeny of the host species' mitochondrial genomes forms the outer circle. Arrows with filled arrowheads represent transmission events inferred by the model with Bayes' factor (BF)  $\geq 3.0$ ; black arrows have BF  $\geq 10$ , with opacity of gray arrows scaled for BF between 3.0 and 10.0. Transmissions with  $2.0 \leq \text{BF} < 3.0$  have open arrowheads (see [Discussion](#)). Width of the arrow indicates the rate of transmission (actual rates = rates  $\times$  indicators). Circle sizes represent network centrality scores for each host. Transmissions from chimps to humans; chimps to gorillas; gorillas to humans; sooty mangabeys to humans; sabaeus to tanzania; and vervets to baboons have been previously documented. To our knowledge, all other transmissions illustrated are novel identifications.

(TIF)

**S8 Fig. Maximum clade credibility trees for each of the 12 GARD-identified genomic segments of the lentiviral genome ("supplemental" dataset).** Tips are color coded by known host state; branches and internal nodes are color coded by inferred host state, with color saturation indicating the confidence of these assignments. Monophyletic clades of viruses from the same lineage are collapsed, with the triangle width proportional to the number of represented sequences.

(TIF)

**S9 Fig. Comparison of discrete trait analysis results.** Each datapoint represents one of the 210 possible transmissions between each pair of the 15 hosts present in the supplemental, main,



and main/pruned datasets. The main dataset consists of 5–25 sequences from each of 24 host species; the pruned dataset is identical, but with short taxa removed from each segment. The supplemental dataset consists of 16–40 sequences from each of 15 host species. The black dashed line shows  $y = x$ ; the linear regression is shown in gray.  
(TIF)

**S10 Fig. Actual rates and Bayes factors for "pruned" main dataset discrete trait analyses.**

Values for the asymmetric transition rates between hosts, as estimated by the CTMC, were calculated as rate  $\times$  indicator (element-wise for each state logged). We report the average posterior values above. Bayes factors represent a ratio of the posterior odds / prior odds that a given actual rate is non-zero. Because each of the 12 segments contributes to the likelihood, but they have not evolved independently, we divide all Bayes factors by 12 and report the adjusted values above (and throughout the text).

(TIF)

**S11 Fig. Network of inferred CSTs of primate lentiviruses ("main" dataset, after "pruning" [removing taxa shorter than 100 bases from each segment]).**

The phylogeny of the host species' mitochondrial genomes forms the outer circle. Arrows represent transmission events inferred by the model with Bayes' factor (BF)  $\geq 3.0$ ; black arrows have BF  $\geq 10$ , with opacity of gray arrows scaled for BF between 3.0 and 10.0. Width of the arrow indicates the rate of transmission (actual rates = rates  $\times$  indicators). As illustrated and discussed, pruning short taxa from the topology can introduce unusual model behavior.

(TIF)

**S12 Fig. Maximum clade credibility trees for each of the 12 GARD-identified genomic segments of the lentiviral genome ("main" dataset, after "pruning" [removing taxa shorter than 100 bases from each segment]).**

Tips are color coded by known host state; branches and internal nodes are color coded by inferred host state, with color saturation indicating the confidence of these assignments. Monophyletic clades of viruses from the same lineage are collapsed, with the triangle width proportional to the number of represented sequences.

(TIF)

## Acknowledgments

We thank Michael Emerman, Janet Young, Vladimir Minin, Gytis Dudas, Chris Whidden, Duncan Ralph, Anna Wald, and the Emerman and Bedford labs for their help. We also acknowledge the Los Alamos National Labs HIV database, which provided the curated data for this study.

## Author Contributions

**Conceptualization:** Sidney M. Bell, Trevor Bedford.

**Data curation:** Sidney M. Bell.

**Formal analysis:** Sidney M. Bell.

**Funding acquisition:** Sidney M. Bell, Trevor Bedford.

**Investigation:** Sidney M. Bell, Trevor Bedford.

**Methodology:** Sidney M. Bell, Trevor Bedford.

**Project administration:** Trevor Bedford.

**Resources:** Trevor Bedford.

**Supervision:** Trevor Bedford.

**Validation:** Sidney M. Bell, Trevor Bedford.

**Visualization:** Sidney M. Bell.

**Writing – original draft:** Sidney M. Bell.

**Writing – review & editing:** Sidney M. Bell, Trevor Bedford.

## References

1. Morens D, Folkers G, Fauci A. Emerging infections: a perpetual challenge. In: LANCET INFECTIOUS DISEASES [Internet]. 2008 [cited 11 Aug 2015] pp. 710–719. [https://doi.org/10.1016/S1473-3099\(08\)70256-1](https://doi.org/10.1016/S1473-3099(08)70256-1) PMID: 18992407
2. Parrish CR, Holmes EC, Morens DM, Park E-C, Burke DS, Calisher CH, et al. Cross-species virus transmission and the emergence of new epidemic diseases. *Microbiol Mol Biol Rev.* 2008; 72: 457–70. <https://doi.org/10.1128/MMBR.00004-08> PMID: 18772285
3. Locatelli S, Peeters M. Cross-species transmission of simian retroviruses: how and why they could lead to the emergence of new diseases in the human population. *AIDS.* 2012; 26: 659–73. <https://doi.org/10.1097/QAD.0b013e328350fb68> PMID: 22441170
4. Apetrei C, Robertson DL, Marx PA. The history of SIVS and AIDS: epidemiology, phylogeny and biology of isolates from naturally SIV infected non-human primates (NHP) in Africa. *Front Biosci.* 2004; 9: 225–54. Available: <http://www.ncbi.nlm.nih.gov/pubmed/14766362> PMID: 14766362
5. Sharp PM, Hahn BH. Origins of HIV and the AIDS pandemic. *Cold Spring Harb Perspect Med.* 2011; 1: a006841. <https://doi.org/10.1101/cshperspect.a006841> PMID: 22229120
6. Hirsch VM, Olmsted RA, Murphey-Corb M, Purcell RH, Johnson PR. An African primate lentivirus (SIVsm) closely related to HIV-2. *Nature.* 1989; 339: 389–92. <https://doi.org/10.1038/339389a0> PMID: 2786147
7. Gao F, Yue L, White AT, Pappas PG, Barchue J, Hanson AP, et al. Human infection by genetically diverse SIVSM-related HIV-2 in west Africa. *Nature.* 1992; 358: 495–9. <https://doi.org/10.1038/358495a0> PMID: 1641038
8. Chen Z, Telfier P, Gettie A, Reed P, Zhang L, Ho DD, et al. Genetic characterization of new West African simian immunodeficiency virus SIVsm: geographic clustering of household-derived SIV strains with human immunodeficiency virus type 2 subtypes and genetically diverse viruses from a single feral sooty mangabey t. *J Virol.* 1996; 70: 3617–27. Available: <http://www.pubmedcentral.nih.gov/articlerender.fcgi?artid=190237&tool=pmcentrez&rendertype=abstract> PMID: 8648696
9. Gao F, Bailes E, Robertson DL, Chen Y, Rodenburg CM, Michael SF, et al. Origin of HIV-1 in the chimpanzee *Pan troglodytes troglodytes*. *Nature.* 1999; 397: 436–41. <https://doi.org/10.1038/17130> PMID: 9989410
10. Van Heuverswyn F, Li Y, Neel C, Bailes E, Keele BF, Liu W, et al. Human immunodeficiency viruses: SIV infection in wild gorillas. *Nature.* 2006; 444: 164. <https://doi.org/10.1038/444164a> PMID: 17093443
11. D'arc M, Ayoub A, Esteban A, Learn GH, Boué V, Liegeois F, et al. Origin of the HIV-1 group O epidemic in western lowland gorillas. *Proc Natl Acad Sci.* 2015; 112: 201502022. <https://doi.org/10.1073/pnas.1502022112> PMID: 25733890
12. Bailes E, Gao F, Bibollet-Ruche F, Courgnaud V, Peeters M, Marx PA, et al. Hybrid Origin of SIV in Chimpanzees. *Science (80-).* 2003; 300.
13. Etienne L, Hahn BH, Sharp PM, Matsen FA, Emerman M. Gene loss and adaptation to hominids underlie the ancient origin of HIV-1. *Cell Host Microbe.* 2013; 14: 85–92. <https://doi.org/10.1016/j.chom.2013.06.002> PMID: 23870316
14. Gifford RJ. Viral evolution in deep time: Lentiviruses and mammals. *Trends in Genetics.* 2012. pp. 89–100. <https://doi.org/10.1016/j.tig.2011.11.003> PMID: 22197521
15. Aghokeng AF, Ayoub A, Mpoudi-Ngole E, Loul S, Liegeois F, Delaporte E, et al. Extensive survey on the prevalence and genetic diversity of SIVs in primate bushmeat provides insights into risks for potential new cross-species transmissions. *Infect Genet Evol.* 2010; 10: 386–96. <https://doi.org/10.1016/j.meegid.2009.04.014> PMID: 19393772
16. Chen J, Powell D, Hu W-S. High frequency of genetic recombination is a common feature of primate lentivirus replication. *J Virol.* 2006; 80: 9651–8. <https://doi.org/10.1128/JVI.00936-06> PMID: 16973569

17. Kosakovsky Pond SL, Posada D, Gravenor MB, Woelk CH, Frost SDW. GARD: a genetic algorithm for recombination detection. *Bioinformatics*. Oxford University Press; 2006; 22: 3096–8. <https://doi.org/10.1093/bioinformatics/btl474> PMID: [17110367](https://pubmed.ncbi.nlm.nih.gov/17110367/)
18. Los Alamos SIV/HIV Sequence Database [Internet]. 2015 [cited 11 Aug 2015]. <http://www.hiv.lanl.gov/content/index>
19. Akaike H. *Information Theory and an Extension of the Maximum Likelihood Principle*. Springer New York; 1998. pp. 199–213. [https://doi.org/10.1007/978-1-4612-1694-0\\_15](https://doi.org/10.1007/978-1-4612-1694-0_15)
20. Jin MJ, Hui H, Robertson DL, Müller MC, Barré-Sinoussi F, Hirsch VM, et al. Mosaic genome structure of simian immunodeficiency virus from west African green monkeys. *EMBO J*. 1994; 13: 2935–47. Available: <http://www.ncbi.nlm.nih.gov/pubmed/8026477> PMID: [8026477](https://pubmed.ncbi.nlm.nih.gov/8026477/)
21. Faria NR, Suchard MA, Rambaut A, Streicker DG, Lemey P. Simultaneously reconstructing viral cross-species transmission history and identifying the underlying constraints. *Philos Trans R Soc Lond B Biol Sci*. 2013; 368: Supplementary Text 1. <https://doi.org/10.1098/rstb.2012.0196> PMID: [23382420](https://pubmed.ncbi.nlm.nih.gov/23382420/)
22. Lemey P, Rambaut A, Drummond AJ, Suchard MA. Bayesian Phylogeography Finds Its Roots. Fraser C, editor. *PLoS Comput Biol*. Public Library of Science; 2009; 5: e1000520. <https://doi.org/10.1371/journal.pcbi.1000520> PMID: [19779555](https://pubmed.ncbi.nlm.nih.gov/19779555/)
23. Volz EM, Koelle K, Bedford T, Grenfell B, Pybus O, Gog J, et al. Viral Phylodynamics. Wodak S, editor. *PLoS Comput Biol*. Public Library of Science; 2013; 9: e1002947. <https://doi.org/10.1371/journal.pcbi.1002947> PMID: [23555203](https://pubmed.ncbi.nlm.nih.gov/23555203/)
24. Jin MJ, Rogers J, Phillips-Conroy JE, Allan JS, Desrosiers RC, Shaw GM, et al. Infection of a yellow baboon with simian immunodeficiency virus from African green monkeys: evidence for cross-species transmission in the wild. *J Virol*. American Society for Microbiology (ASM); 1994; 68: 8454–60. Available: <http://www.ncbi.nlm.nih.gov/pubmed/7966642>
25. Leitner T, Dazza M-C, Ekwilanga M, Apetrei C, Saragosti S. Sequence diversity among chimpanzee simian immunodeficiency viruses (SIVcpz) suggests that SIVcpzPtt was derived from SIVcpzPtt through additional recombination events. *AIDS Res Hum Retroviruses*. Mary Ann Liebert, Inc. 2 Madison Avenue Larchmont, NY 10538 USA; 2007; 23: 1114–8. <https://doi.org/10.1089/aid.2007.0071> PMID: [17919106](https://pubmed.ncbi.nlm.nih.gov/17919106/)
26. Ayouba A, Njouom R, Chia JE, Ahuka-Mundeye S, Kfutwah A, Ngole EM, et al. Molecular characterization of a new mosaic Simian Immunodeficiency Virus in a naturally infected tanzanian monkey (*Chlorocebus tantalus*) from Cameroon: a challenge to the virus-host co-evolution of SIVagm in African green monkeys. *Infect Genet Evol*. NIH Public Access; 2015; 30: 65–73. <https://doi.org/10.1016/j.meegid.2014.12.005> PMID: [25500294](https://pubmed.ncbi.nlm.nih.gov/25500294/)
27. Compton A a., Emerman M. Convergence and Divergence in the Evolution of the APOBEC3G-Vif Interaction Reveal Ancient Origins of Simian Immunodeficiency Viruses. *PLoS Pathog*. 2013; 9. <https://doi.org/10.1371/journal.ppat.1003135> PMID: [23359341](https://pubmed.ncbi.nlm.nih.gov/23359341/)
28. Souquière S, Bibollet-Ruche F, Robertson DL, Makuwa M, Apetrei C, Onanga R, et al. Wild Mandrill sphinx are carriers of two types of lentivirus. *J Virol*. American Society for Microbiology (ASM); 2001; 75: 7086–96. <https://doi.org/10.1128/JVI.75.15.7086-7096.2001>
29. Liégeois F, Boué V, Mouacha F, Butel C, Ondo B, Pourrut X, et al. New STLV-3 strains and a divergent SIVmus strain identified in non-human primate bushmeat in Gabon. *Retrovirology*. 2012; 9: 28. <https://doi.org/10.1186/1742-4690-9-28> PMID: [22462797](https://pubmed.ncbi.nlm.nih.gov/22462797/)
30. Aghokeng AF, Bailes E, Loul S, Courgnaud V, Mpoudi-Ngolle E, Sharp PM, et al. Full-length sequence analysis of SIVmus in wild populations of mustached monkeys (*Cercopithecus cephus*) from Cameroon provides evidence for two co-circulating SIVmus lineages. *Virology*. 2007; 360: 407–418. <https://doi.org/10.1016/j.virol.2006.10.048> PMID: [17156809](https://pubmed.ncbi.nlm.nih.gov/17156809/)
31. Courgnaud V, Abela B, Pourrut X, Mpoudi-Ngole E, Loul S, Delaporte E, et al. Identification of a new simian immunodeficiency virus lineage with a vpu gene present among different cercopithecus monkeys (*C. mona*, *C. cephus*, and *C. nictitans*) from Cameroon. *J Virol*. 2003; 77: 12523–34. Available: <http://www.ncbi.nlm.nih.gov/pubmed/14610175> <https://doi.org/10.1128/JVI.77.23.12523-12534.2003> PMID: [14610175](https://pubmed.ncbi.nlm.nih.gov/14610175/)
32. Santiago ML, Rodenburg CM, Kamenya S, Bibollet-Ruche F, Gao F, Bailes E, et al. SIVcpz in Wild Chimpanzees. *Science* (80-). 2002;295.
33. Charleston MA, Robertson DL. Preferential host switching by primate lentiviruses can account for phylogenetic similarity with the primate phylogeny. *Syst Biol*. 2002; 51: 528–35. <https://doi.org/10.1080/10635150290069940> PMID: [12079649](https://pubmed.ncbi.nlm.nih.gov/12079649/)
34. McCarthy KR, Kirmaier A, Autissier P, Johnson WE. Evolutionary and Functional Analysis of Old World Primate TRIM5 Reveals the Ancient Emergence of Primate Lentiviruses and Convergent Evolution

- Targeting a Conserved Capsid Interface. Emerman M, editor. *PLOS Pathog.* 2015; 11: e1005085. <https://doi.org/10.1371/journal.ppat.1005085> PMID: 26291613
35. Aiewsakun P, Katzourakis A. Time-Dependent Rate Phenomenon in Viruses. *J Virol. American Society for Microbiology*; 2016; 90: 7184–95. <https://doi.org/10.1128/JVI.00593-16> PMID: 27252529
  36. Worobey M, Telfer P, Souquière S, Hunter M, Coleman CA, Metzger MJ, et al. Island biogeography reveals the deep history of SIV. *Science.* 2010; 329: 1487. <https://doi.org/10.1126/science.1193550> PMID: 20847261
  37. Goodall J. *The chimpanzees of Gombe: Patterns of behavior.* [Internet]. Cambridge, MA: The Belknap Press of Harvard University Press; 1986. <http://doi.wiley.com/10.1002/ajpa.1330730313>
  38. <http://www.iucnredlist.org/>. In: International Union for Conservation of Nature Red List of Threatened Species. 2015.
  39. Harris RS, Hultquist JF, Evans DT. The restriction factors of human immunodeficiency virus. *J Biol Chem.* 2012; 287: 40875–83. <https://doi.org/10.1074/jbc.R112.416925> PMID: 23043100
  40. Pandrea I, Apetrei C, Gordon S, Barbercheck J, Dufour J, Bohm R, et al. Paucity of CD4+CCR5+ T cells is a typical feature of natural SIV hosts. *Blood.* 2007; 109: 1069–76. <https://doi.org/10.1182/blood-2006-05-024364> PMID: 17003371
  41. Riddick NE, Hermann EA, Loftin LM, Elliott ST, Wey WC, Cervasi B, et al. A Novel CCR5 Mutation Common in Sooty Mangabeys Reveals SIVsmm Infection of CCR5-Null Natural Hosts and Efficient Alternative Coreceptor Use In Vivo. Emerman M, editor. *PLoS Pathog.* 2010; 6: e1001064. <https://doi.org/10.1371/journal.ppat.1001064> PMID: 20865163
  42. Chen Z, Kwon D, Jin Z, Monard S, Telfer P, Jones MS, et al. Natural infection of a homozygous delta24 CCR5 red-capped mangabey with an R2b-tropic simian immunodeficiency virus. *J Exp Med.* 1998; 188: 2057–65. Available: <http://www.ncbi.nlm.nih.gov/pubmed/9841919> PMID: 9841919
  43. Faria NR, Rambaut A, Suchard MA, Baele G, Bedford T, Ward MJ, et al. The early spread and epidemic ignition of HIV-1 in human populations. *Science (80-).* 2014; 346: 56–61. <https://doi.org/10.1126/science.1256739> PMID: 25278604
  44. Chen Z, Luckay A, Sodora DL, Telfer P, Reed P, Gettie A, et al. Human immunodeficiency virus type 2 (HIV-2) seroprevalence and characterization of a distinct HIV-2 genetic subtype from the natural range of simian immunodeficiency virus-infected sooty mangabeys. *J Virol.* 1997; 71: 3953–60. Available: <http://www.ncbi.nlm.nih.gov/pubmed/9094672> PMID: 9094672
  45. Pieniazek D, Ellenberger D, Janini LM, Ramos AC, Nkengasong J, Sassan-Morokro M, et al. Predominance of human immunodeficiency virus type 2 subtype B in Abidjan, Ivory Coast. *AIDS Res Hum Retroviruses.* 1999; 15: 603–8. <https://doi.org/10.1089/088922299311132> PMID: 10221538
  46. Damond F, Descamps D, Farfara I, Telles JN, Puyeo S, Campa P, et al. Quantification of proviral load of human immunodeficiency virus type 2 subtypes A and B using real-time PCR. *J Clin Microbiol.* 2001; 39: 4264–8. <https://doi.org/10.1128/JCM.39.12.4264-4268.2001> PMID: 11724830
  47. Ishikawa K, Janssens W, Banor JS, Shinno T, Piedade J, Sata T, et al. Genetic analysis of HIV type 2 from Ghana and Guinea-Bissau, West Africa. *AIDS Res Hum Retroviruses.* 2001; 17: 1661–3. <https://doi.org/10.1089/088922201753342077> PMID: 11779354
  48. Kalish ML, Wolfe ND, Ndongmo CB, McNicholl J, Robbins KE, Aidoo M, et al. Central African hunters exposed to simian immunodeficiency virus. *Emerg Infect Dis.* 2005; 11: 1928–30. <https://doi.org/10.3201/eid1112.050394> PMID: 16485481
  49. Apetrei C, Gaufin T, Gautam R, Vinton C, Hirsch V, Lewis M, et al. Pattern of SIVagm Infection in Patas Monkeys Suggests that Host Adaptation to Simian Immunodeficiency Virus Infection May Result in Resistance to Infection and Virus Extinction. *J Infect Dis.* Oxford University Press; 2010; 202: S371–S376. <https://doi.org/10.1086/655970> PMID: 20887227
  50. Stamatakis A. RAxML version 8: a tool for phylogenetic analysis and post-analysis of large phylogenies. *Bioinformatics.* 2014; 30: 1312–3. <https://doi.org/10.1093/bioinformatics/btu033> PMID: 24451623
  51. Katoh K, Standley DM. MAFFT multiple sequence alignment software version 7: improvements in performance and usability. *Mol Biol Evol.* Oxford University Press; 2013; 30: 772–80. <https://doi.org/10.1093/molbev/mst010> PMID: 23329690
  52. Hill WG, Robertson A. Linkage disequilibrium in finite populations. *Theor Appl Genet.* Springer-Verlag; 1968; 38: 226–231. <https://doi.org/10.1007/BF01245622> PMID: 24442307
  53. Whidden C, Matsen FA. Ricci-Ollivier Curvature of the Rooted Phylogenetic Subtree-Prune-Regraft Graph. 2015; <http://arxiv.org/abs/1504.00304>
  54. Drummond AJ, Suchard MA, Xie D, Rambaut A. Bayesian phylogenetics with BEAUti and the BEAST 1.7. *Mol Biol Evol.* 2012; 29: 1969–73. <https://doi.org/10.1093/molbev/mss075> PMID: 22367748
  55. Gernhard T. Using birth-death model on trees. *J Theor Biol.* 2008; 253: 769–778.

56. Rambaut, A, Suchard, MA, Xie, D, Drummond A. Tracer v1.6 [Internet]. 2014. <http://beast.bio.ed.ac.uk/Tracer>
57. Edwards CJ, Suchard MA, Lemey P, Welch JJ, Barnes I, Fulton TL, et al. Ancient hybridization and an Irish origin for the modern polar bear matriline. *Curr Biol.* 2011; 21: 1251–8. <https://doi.org/10.1016/j.cub.2011.05.058> PMID: [21737280](https://pubmed.ncbi.nlm.nih.gov/21737280/)