

University of Groningen

## Molecular Classification of the PORTEC-3 Trial for High-Risk Endometrial Cancer

TransPORTEC consortium; León-Castillo, Alicia; de Boer, Stephanie M; Powell, Melanie E; Mileskin, Linda R; Mackay, Helen J; Leary, Alexandra; Nijman, Hans W; Singh, Naveena; Pollock, Pamela M

*Published in:*

Journal of clinical oncology : official journal of the American Society of Clinical Oncology

*DOI:*

[10.1200/JCO.20.00549](https://doi.org/10.1200/JCO.20.00549)

**IMPORTANT NOTE: You are advised to consult the publisher's version (publisher's PDF) if you wish to cite from it. Please check the document version below.**

*Document Version*

Publisher's PDF, also known as Version of record

*Publication date:*

2020

[Link to publication in University of Groningen/UMCG research database](#)

*Citation for published version (APA):*

TransPORTEC consortium, León-Castillo, A., de Boer, S. M., Powell, M. E., Mileskin, L. R., Mackay, H. J., Leary, A., Nijman, H. W., Singh, N., Pollock, P. M., Bessette, P., Fyles, A., Haie-Meder, C., Smit, V. T. H. B. M., Edmondson, R. J., Putter, H., Kitchener, H. C., Crosbie, E. J., de Bruyn, M., ... Bosse, T. (2020). Molecular Classification of the PORTEC-3 Trial for High-Risk Endometrial Cancer: Impact on Prognosis and Benefit From Adjuvant Therapy. *Journal of clinical oncology : official journal of the American Society of Clinical Oncology*, 38(29), 3388-3397. [JCO2000549]. <https://doi.org/10.1200/JCO.20.00549>

### Copyright

Other than for strictly personal use, it is not permitted to download or to forward/distribute the text or part of it without the consent of the author(s) and/or copyright holder(s), unless the work is under an open content license (like Creative Commons).

The publication may also be distributed here under the terms of Article 25fa of the Dutch Copyright Act, indicated by the "Taverne" license. More information can be found on the University of Groningen website: <https://www.rug.nl/library/open-access/self-archiving-pure/taverne-amendment>.

### Take-down policy

If you believe that this document breaches copyright please contact us providing details, and we will remove access to the work immediately and investigate your claim.

Downloaded from the University of Groningen/UMCG research database (Pure): <http://www.rug.nl/research/portal>. For technical reasons the number of authors shown on this cover page is limited to 10 maximum.



# Molecular Classification of the PORTEC-3 Trial for High-Risk Endometrial Cancer: Impact on Prognosis and Benefit From Adjuvant Therapy

Alicia León-Castillo, MD<sup>1</sup>; Stephanie M. de Boer, MD<sup>2</sup>; Melanie E. Powell, MD<sup>3</sup>; Linda R. Mileschkin, MBBS<sup>4</sup>; Helen J. Mackay, MD<sup>5</sup>; Alexandra Leary, MD, PhD<sup>6</sup>; Hans W. Nijman, MD, PhD<sup>6,7</sup>; Naveena Singh, MD, MBBS<sup>8</sup>; Pamela M. Pollock, PhD<sup>9</sup>; Paul Bessette, MD<sup>10</sup>; Anthony Fyles, MD<sup>11</sup>; Christine Haie-Meder, MD<sup>12</sup>; Vincent T. H. B. M. Smit, MD, PhD<sup>1</sup>; Richard J. Edmondson, MD<sup>13</sup>; Hein Putter, MD<sup>14</sup>; Henry C. Kitchener, MD<sup>13</sup>; Emma J. Crosbie, MD, PhD<sup>13</sup>; Marco de Bruyn, PhD<sup>7</sup>; Remi A. Nout, MD<sup>2</sup>; Nanda Horeweg, MD, PhD<sup>2</sup>; Carien L. Creutzberg, MD, PhD<sup>2</sup>; and Tjalling Bosse, MD, PhD<sup>1</sup> on behalf of the TransPORTEC consortium

**PURPOSE** The randomized Adjuvant Chemoradiotherapy Versus Radiotherapy Alone in Women With High-Risk Endometrial Cancer (PORTEC-3) trial investigated the benefit of combined adjuvant chemotherapy and radiotherapy (CTRT) versus radiotherapy alone (RT) for women with high-risk endometrial cancer (EC). Because The Cancer Genome Atlas defined an EC molecular classification with strong prognostic value, we investigated prognosis and impact of chemotherapy for each molecular subgroup using tissue samples from PORTEC-3 trial participants.

**METHODS** Paraffin-embedded tissues of 423 consenting patients were collected. Immunohistochemistry for p53 and mismatch repair (MMR) proteins, and DNA sequencing for *POLE* exonuclease domain were done to classify tumors as p53 abnormal (p53abn), *POLE*-ultramutated (*POLEmut*), MMR-deficient (MMRd), or no specific molecular profile (NSMP). The primary end point was recurrence-free survival (RFS). Kaplan-Meier method, log-rank test, and Cox model were used for analysis.

**RESULTS** Molecular analysis was successful in 410 high-risk EC (97%), identifying the 4 subgroups: p53abn EC (n = 93; 23%), *POLEmut* (n = 51; 12%), MMRd (n = 137; 33%), and NSMP (n = 129; 32%). Five-year RFS was 48% for patients with p53abn EC, 98% for *POLEmut* EC, 72% for MMRd EC, and 74% for NSMP EC ( $P < .001$ ). The 5-year RFS with CTRT versus RT for p53abn EC was 59% versus 36% ( $P = .019$ ); 100% versus 97% for patients with *POLEmut* EC ( $P = .637$ ); 68% versus 76% ( $P = .428$ ) for MMRd EC; and 80% versus 68% ( $P = .243$ ) for NSMP EC.

**CONCLUSION** Molecular classification has strong prognostic value in high-risk EC, with significantly improved RFS with adjuvant CTRT for p53abn tumors, regardless of histologic type. Patients with *POLEmut* EC had an excellent RFS in both trial arms. EC molecular classification should be incorporated in the risk stratification of these patients as well as in future trials to target specific subgroups of patients.

J Clin Oncol 38:3388-3397. © 2020 by American Society of Clinical Oncology

Licensed under the Creative Commons Attribution 4.0 License

## INTRODUCTION

The endometrial cancer (EC) molecular classification introduced by The Cancer Genome Atlas<sup>1</sup> has initiated a transition toward molecular-based classification with clear prognostic value and thus a potential impact on the clinical care of patients with EC. The significant prognostic differences among the 4 molecular subgroups have been replicated using surrogate markers in formalin-fixed, paraffin-embedded (FFPE) tissues, identifying analogous subgroups: p53-abnormal (p53abn), *POLE*-ultramutated (*POLEmut*), mismatch repair-deficient (MMRd), and no specific molecular profile (NSMP) EC. The integration of the molecular classification with clinicopathological features has resulted in improved prognostic accuracy in intermediate-risk EC as well as unselected cohorts,<sup>2-5</sup> highlighting the potential of the molecular classification to refine and further individualize patients' risk stratification.

Although patients with EC generally have a good prognosis, 15%-20% have high-risk disease with increased incidence of distant metastases and cancer-related death. Characteristics defining high-risk EC are high-grade disease, advanced stage, and/or non-endometrioid histology. Adjuvant pelvic external beam radiotherapy (EBRT) is a standard of care for patients with high-risk EC.<sup>6</sup> The randomized Adjuvant Chemoradiotherapy Versus Radiotherapy Alone in Women With High-Risk Endometrial Cancer (PORTEC-3) trial investigated the benefit of combined adjuvant chemotherapy and EBRT (CTRT) versus EBRT alone (RT) in patients with high-risk EC.<sup>7</sup> PORTEC-3 showed a significant benefit in both overall survival (OS) and failure-free survival (FFS) with CTRT, although the absolute benefit was limited (5% for 5-year OS and 7% for 5-year FFS), and significantly more adverse events occurred with CTRT. The greatest benefit was

## ASSOCIATED CONTENT

### Data Supplement

Author affiliations and support information (if applicable) appear at the end of this article.

Accepted on June 25, 2020 and published at [ascopubs.org/journal/jco](https://ascopubs.org/journal/jco) on August 4, 2020; DOI <https://doi.org/10.1200/JCO.20.00549>

## CONTEXT

### Key Objective

To determine, using tissue samples from the PORTEC-3 clinical trial, the prognostic value of the endometrial cancer (EC) molecular classification in high-risk EC and the possible benefit from chemotherapy within each molecular subgroup.

### Knowledge Generated

The molecular classification has a strong prognostic value in high-risk EC. Additionally, the molecular classification may guide adjuvant treatment decisions for patients with high-risk EC and supports adjuvant chemotherapy for p53abn ECs.

### Relevance

This study shows that incorporation of the molecular classification into risk stratification systems is essential and future clinical trials should address specific molecular subgroups of EC. Adjuvant treatment decisions based on the molecular classification are supported; specifically, patients with p53abn EC should be considered for adjuvant chemoradiotherapy, whereas for those with *POLE*mut cancers, de-escalation of adjuvant treatment should be considered.

observed in serous cancers and stage III disease.<sup>8</sup> However, because there is substantial interobserver variability in assessment of pathologic factors that define high-risk, especially in high-grade EC,<sup>9,10</sup> it remains a challenge to identify patients who will benefit from chemotherapy. In this context, the molecular classification might help determine appropriate adjuvant treatment.

Using tissue samples donated by PORTEC-3 clinical trial participants, we investigated the prognostic relevance of the molecular classification and the relationship between the molecular subgroups and benefit from adjuvant CRT in patients with high-risk EC.

## METHODS

### Patient Selection and Study Design

FFPE tissue was collected from 423 consenting patients from 5 of the 6 clinical trial groups participating in the PORTEC-3 clinical trial.<sup>7</sup> The design and results of the PORTEC-3 trial have been reported previously<sup>7</sup> and are further described in the Data Supplement. Briefly, this international phase III trial enrolled patients with high-risk EC (endometrioid EC [EEC] grade 3 stage IA with documented lymphovascular space invasion [LVSI]; EEC grade 3 stage IB; EEC stage II-III; and nonendometrioid invasive EC stages I, II, or III). Upfront central pathology review was done by reference gynecopathologists to confirm eligibility.<sup>11</sup> Abdominal or laparoscopic hysterectomy with bilateral salpingo-oophorectomy was performed on all patients. Patients were randomly allocated 1:1 to EBRT alone or CRT (2 cycles of cisplatin followed by 4 cycles of carboplatin and paclitaxel). The study was approved by the Dutch Cancer Society and ethics committees of participating groups.

### Procedures

Immunohistochemical staining for p53 and MMR proteins (MLH1, PMS2, MSH2, and MSH6) was performed on all cases (see Data Supplement for procedures and scoring). If p53 immunohistochemistry was not evaluable, *TP53*

mutational status was used (n = 9; 2.1% of the total 423 EC cases). If MMR immunohistochemistry was not evaluable, microsatellite instability (MSI) was assessed (n = 8; 1.9%) using the MSI analysis system, version 1.2 (Promega, Madison, WI).

DNA isolation was performed as described previously.<sup>12</sup> *POLE* mutational status was assessed by next-generation sequencing using the AmpliSeq Cancer Hotspot Panel, version 5 (Thermo Fisher Scientific, Waltham, MA), a panel including *POLE* exonuclease domain and *TP53*, as described in the Data Supplement. If sequencing with the panel failed, KASPar competitive allele-specific polymerase chain reaction (LGC Genomics, Berlin, Germany) assays were used to screen for *POLE* hotspot variants at codons 286, 297, 411, 456, and 459 (primer sequences are available upon request). *POLE* exonuclease domain mutations (EDMs) were considered pathogenic (in this context, mutations causative of ultramutation) following previously defined criteria.<sup>13</sup> Sequencing and immunohistochemistry results were evaluated blinded for patient outcome.

If  $\geq 1$  of the molecular features (p53, MMR, and/or *POLE* status) could not be determined (eg, not enough tumoral material or testing failed), and thus the molecular subgroup could not be determined, the case was classified as EC, not otherwise specified<sup>14</sup> and excluded from the study (n = 13). Tumors with  $> 1$  classifying feature (multiple-classifier EC) were allocated in 1 of the 4 molecular subgroups, as described previously.<sup>13,15</sup> Briefly, ECs with a pathogenic *POLE* EDM with p53 abnormal expression and/or MMR protein loss were classified as *POLE*mut EC, whereas ECs with loss of any MMR protein or MSI-high with a p53 mutant staining pattern were classified as MMRd EC (Data Supplement).<sup>13,15</sup>

### Statistical Analysis

The primary end point was RFS, defined as time from randomization to date of first relapse or death, whichever occurred first. The secondary end point was OS, defined as the time from randomization to date of death of any cause.

Statistical analysis was performed using SPSS statistics, version 25 (IBM, Armonk, NY) and R, version 3.6.1). Clinicopathological characteristics of patients included in this study and the complete PORTEC-3 cohort, as well as between molecular subgroups, were compared with a  $\chi^2$  test for categorical variables or 1-way ANOVA for continuous variables. All analyses were based on intention to treat. Analysis was also done by treatment received, without relevant differences (data not shown).

Differences in RFS and OS between molecular subgroups were tested with log-rank test and Cox regression analysis, which included molecular subgroups, age (as a continuous variable), histology (EEC grade 1-2 v EEC grade 3 or mixed v nonendometrioid serous carcinoma, clear-cell carcinoma, or other), stage (stage I-II v III), and adjuvant treatment received (CTRT v RT). To identify differences in treatment effect between molecular subgroups, Cox regression analysis was performed with treatment received, molecular subgroup, and their interaction. Similarly, Cox regression with treatment received, stage, and their interaction was performed within each molecular subgroup to analyze treatment effect per stage. Median follow-up time was calculated using the reverse Kaplan-Meier method. Reported *P* values were based on 2-sided tests, with *P* < .05 considered statistically significant.

## RESULTS

A total of 423 EC samples from PORTEC-3 participants were collected and available for molecular analysis. Molecular testing was successful for 410 tumors (97%; Fig 1). Patient and tumor characteristics of these 410 ECs were comparable to the trial population not included in this study (Data Supplement). Median follow-up was 6.1 years (range, 0.52-11.03 years).

The 410 ECs were classified in 1 of the 4 molecular subgroups (Data Supplement):

1. 93 (22.7%) were p53abn
2. 51 (12.4%) were *POLEmut*
3. 137 (33.4%) were MMRd
4. 129 (31.5%) were NSMP ECs.

Thirty multiple-classifier ECs were identified and allocated within 1 of the molecular subgroups (Data Supplement): 7 (1.7%) were *POLEmut*-p53abn, 9 (2.2%) were *POLEmut*-MMRd, 11 (2.7%) were MMRd-p53abn, and 3 (0.7%) were *POLEmut*-MMRd-p53abn ECs. There were significant differences in age, histology, and stage among the molecular subgroups (Table 1). Of note, nonendometrioid ECs were found within all 4 molecular subgroups, as well as stage III cancers. The presence of LVSI, type of surgical procedure, and treatment (CTRT v RT) were well balanced among the molecular subgroups.

### Clinical Outcome

Patients with p53abn EC (*n* = 93) had the poorest prognosis, with 5-year RFS and OS of 48.0% and 54.0%,

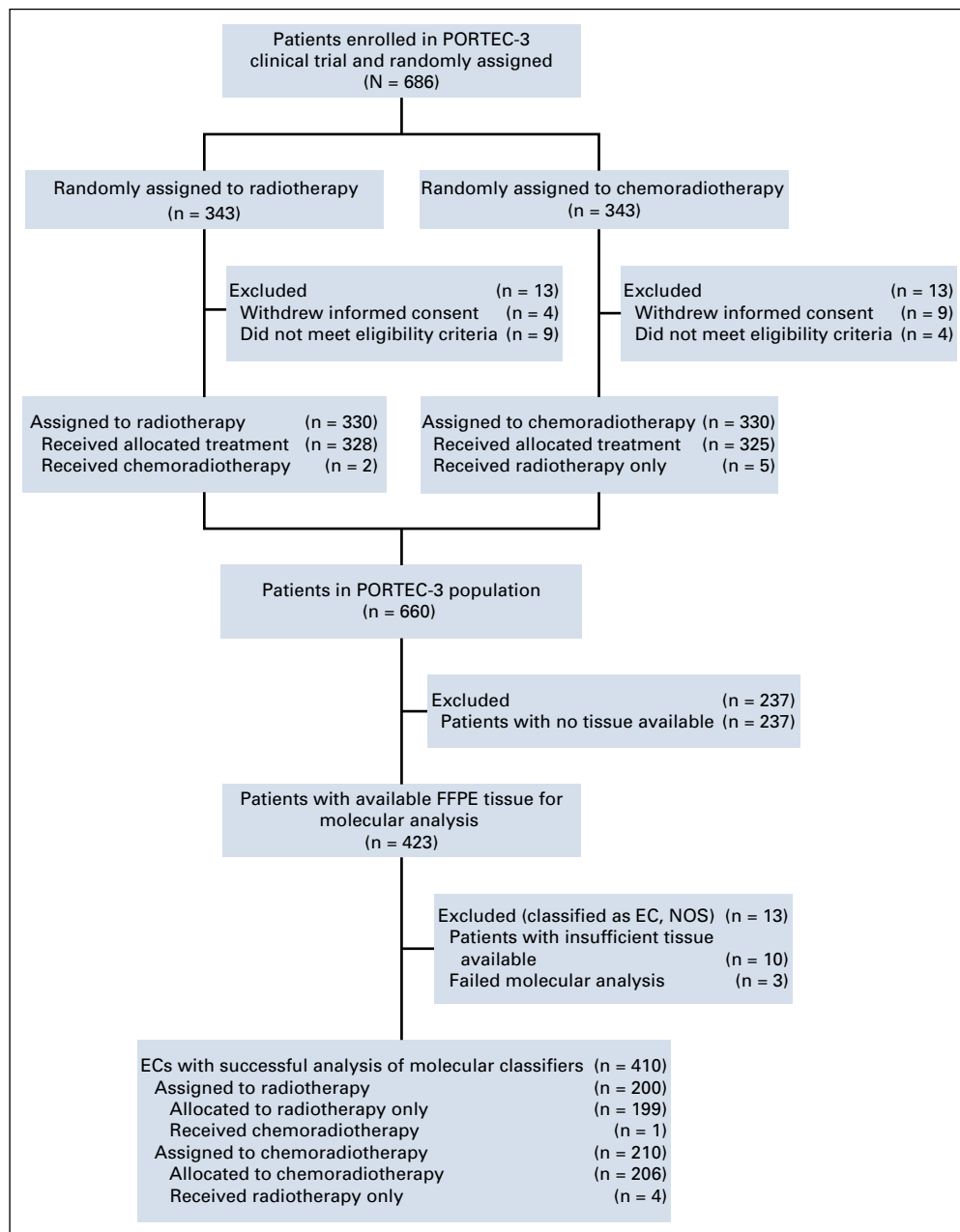
respectively. There were no statistically significant differences in clinical outcome between patients with p53abn serous type EC, and p53abn EC with other histologies (5-year RFS: 46.6% for serous p53abn v 48.9% for p53abn nonserous EC, *P* = .930; 5-year OS: 57.7% v 50.7%, *P* = .704). Five-year RFS and OS for women with *POLEmut* ECs (*n* = 51) were both 98.0%. Only 1 patient with a *POLEmut* EC had a recurrence and ultimately died of her cancer. Patients with MMRd (*n* = 137) and NSMP (*n* = 129) ECs had an intermediate outcome (5-year RFS: 71.7% and 74.4%, respectively; 5-year OS, 81.3% and 88.5%, respectively; Fig 2). All 30 patients with a multiple-classifier EC were alive without recurrence of their cancer at the time of data analysis (median follow-up, 5.3 years).

The prognostic value of the molecular EC classification was evaluated in univariable and multivariable analysis (Table 2). The p53abn subgroup was the strongest adverse prognostic factor, with a hazard ratio (HR) for RFS of 2.52 (95% CI, 1.62 to 3.91; *P* < .001) and HR for OS of 2.30 (95% CI, 1.42 to 3.73; *P* = .001), whereas *POLEmut* was the strongest favorable prognostic factor both for RFS (HR, 0.08; 95% CI, 0.01 to 0.58; *P* = .012) and OS (HR, 0.12; 95% CI, 0.02 to 0.87; *P* = .036; Table 2).

We analyzed the differences in adjuvant treatment effect (CTRT v RT) among the molecular subgroups (Fig 3). Patients with a p53abn EC had statistically significant benefit from combined adjuvant CTRT, with an absolute difference of 22.4% for RFS (5-year RFS, 58.6% with CTRT v 36.2% with RT; HR, 0.52, 95% CI, 0.30 to 0.91, *P* = .021) and of 23.1% for OS (5-year OS, 64.9% v 41.8% for CTRT v RT; HR, 0.55, 95% CI, 0.30 to 1.00, *P* = .049; Fig 3). Test for interaction between molecular subgroups and treatment arm did not reach significance (RFS: *P* = .072; OS: *P* = .113). In exploratory subanalyses, the benefit from CTRT remained significant for RFS in early-stage p53abn EC but lost significance in stage III disease; however, numbers were small and testing for interaction between stage and adjuvant treatment in p53abn EC was not significant (Data Supplement).

Only 1 patient with a *POLEmut* EC (treated with RT alone) had disease recurrence, resulting in a 5-year RFS and OS of 100% with CTRT versus 96.6% with RT (HR, 0.02; 95% CI, < 0.01 to > 10<sup>5</sup>; *P* = .637; Fig 3).

Women with MMRd EC had a 5-year RFS of 68.0% with CTRT versus 75.5% with RT (HR, 1.29; 95% CI, 0.68 to 2.45; *P* = .429) and a 5-year OS of 78.6% with CTRT versus 84.0% with RT (HR, 1.33; 95% CI, 0.64 to 2.75; *P* = .445; Fig 3). Although patients with NSMP EC seemed to benefit from CTRT (5-year RFS: 79.7% with CTRT v 67.7% with RT; 5-year OS: 89.3% v 87.6%), this did not reach statistical significance (RFS: HR, 0.68, 95% CI, 0.36 to 1.30, *P* = .246; OS: HR, 0.68, 95% CI, 0.26 to 1.77, *P* = .434; Fig 3). Explorative subanalysis by stage within the



**FIG 1.** Flowchart of sample analysis. EC, endometrial cancer; FFPE, formalin-fixed, paraffin-embedded; NOS, not otherwise specified; PORTEC-3, Adjuvant Chemoradiotherapy Versus Radiotherapy Alone in Women With High-Risk Endometrial Cancer.

patients with MMRd and NSMP EC did not reveal a benefit from adjuvant chemotherapy in advanced stages either (Data Supplement).

## DISCUSSION

To our knowledge, this study is the first to show the strong prognostic value of the molecular EC classification within a large cohort of patients with high-risk EC. Because of the randomized design of the PORTEC-3 trial, it is also the first, to our knowledge, to explore the potential predictive capacity of the molecular EC classification for benefit from chemotherapy. Patients with p53abn EC had a poor prognosis, in contrast to the excellent survival outcomes of patients with *POLE*mut EC, even among high-grade and

advanced-stage cancers. Patients with MMRd or NSMP EC had an intermediate clinical outcome. Furthermore, patients with p53abn EC had a highly significant benefit from CTRT with an absolute benefit of 22.4% and 23.1% for 5-year RFS and OS, respectively, whereas patients with *POLE*mut EC had an excellent survival in both treatment arms. No benefit was observed from CTRT versus RT alone in patients with MMRd EC. Patients with NSMP EC had a trend toward benefit from CTRT, similar to the overall trial outcomes,<sup>8</sup> but additional studies will be needed to elucidate the role of chemotherapy in this subgroup.

Indications for adjuvant treatment are currently based on well-established clinicopathological risk factors such as Federation Internationale de Gynecologie et d'Obstetrique



**TABLE 1.** Clinicopathological Features by Molecular Subgroup in High-Risk Endometrial Cancers

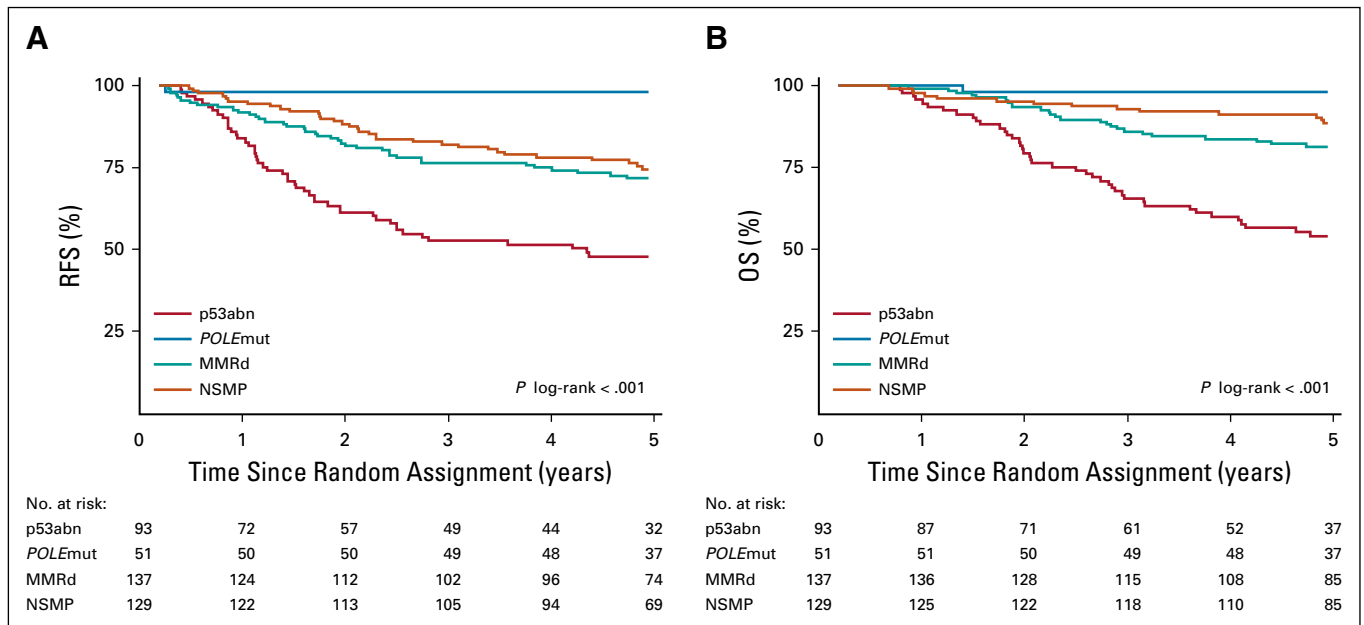
Characteristic	Total	p53abn	POLEmut	MMRd	NSMP	P
No. of patients	410 (100)	93 (22.7)	51 (12.4)	137 (33.4)	129 (31.5)	
Age, years						< .001
Mean (range)	61.2 (26.7-80.5)	65.8 (47.3-80.5)	57.2 (42.7-72.3)	60.6 (33.5-76.5)	60.1 (26.7-78.6)	
Histotype						< .001
EEC grade 1-2	161 (39.3)	4 (4.3)	4 (7.8)	59 (43.1)	94 (72.9)	
EEC grade 3	113 (27.6)	21 (22.6)	29 (56.9)	47 (34.3)	16 (12.4)	
Serous carcinoma	65 (15.9)	46 (49.5)	6 (11.8)	7 (5.1)	6 (4.7)	
Clear-cell carcinoma	39 (9.5)	12 (12.9)	6 (11.8)	12 (8.8)	9 (7.0)	
Mixed carcinoma	19 (4.6)	6 (6.5)	3 (5.9)	7 (5.1)	3 (2.3)	
Other	13 (3.2)	4 (4.3)	3 (5.9)	5 (3.6)	1 (0.8)	
Stage						< .001
IA	54 (13.2)	23 (24.7)	12 (23.5)	13 (9.5)	6 (4.7)	
IB	73 (17.8)	14 (15.1)	20 (39.2)	26 (19.0)	13 (10.1)	
II	105 (25.6)	24 (25.8)	7 (13.7)	33 (24.1)	41 (31.8)	
IIIA	46 (11.2)	8 (8.6)	2 (3.9)	10 (7.3)	26 (20.2)	
IIIB	29 (7.1)	4 (4.3)	4 (7.8)	13 (9.5)	8 (6.2)	
IIIC	103 (25.1)	20 (21.5)	6 (11.8)	42 (30.7)	35 (27.1)	
LVSI						.283
Absent	155 (37.8)	35 (37.6)	18 (35.3)	45 (32.8)	57 (44.2)	
Present	255 (62.2)	58 (62.4)	33 (64.7)	92 (67.2)	72 (55.8)	
Surgery						.398
TAH-BSO	135 (32.9)	29 (31.2)	12 (23.5)	39 (28.5)	55 (42.6)	
TAH-BSO + LND	162 (39.5)	38 (40.9)	24 (47.1)	57 (41.6)	43 (33.3)	
Laparoscopic	52 (12.7)	13 (14.0)	7 (13.7)	19 (13.9)	13 (10.1)	
Laparoscopic+ LND	61 (14.9)	13 (14.0)	8 (15.7)	22 (16.1)	18 (14.0)	
Lymphadenectomy						.199
No	187 (45.6)	42 (45.2)	19 (37.3)	58 (42.3)	68 (52.7)	
Yes	223 (54.4)	51 (54.8)	32 (62.7)	79 (57.7)	61 (47.3)	
Treatment						.424
RT	200 (48.8)	44 (47.3)	29 (56.9)	70 (51.1)	57 (44.2)	
CTRT	210 (51.2)	49 (52.7)	22 (43.1)	67 (48.9)	72 (55.8)	

NOTE. Data reported as No. (%) unless otherwise indicated.

Abbreviations: CTRT, combined adjuvant chemotherapy and radiotherapy; EEC, endometrioid endometrial carcinoma; LND, lymph node dissection; LVSI, lymphovascular space invasion; MMRd, MMR-deficient; NSMP, no specific molecular profile; p53abn, p53-abnormal; POLEmut, POLE-ultramutated; RT, external beam radiotherapy alone; TAH-BSO, total abdominal hysterectomy and bilateral salpingo-oophorectomy.

stage, grade, histologic type, LVSI, and age. Challenges with the current system include the lack of interobserver agreement in the evaluation of pathologic features, especially on histologic type in high-grade EC, where discrepancies reach 36% of cases examined.<sup>9</sup> In contrast, the molecular EC classification is a highly reproducible system with strong prognostic value. The assessment of MMR proteins and p53 immunohistochemistry are highly concordant with MSI and *TP53* mutational status, respectively,<sup>16,17</sup> and the interobserver agreement is > 95%.<sup>17,18</sup> Authors of a recent study proposed pragmatic

guidelines for the interpretation of nonhotspot *POLE*-EDM in EC,<sup>13</sup> ensuring uniform interpretation. Furthermore, multiple-classifier EC can now be assigned to the appropriate molecular subgroup.<sup>13,15</sup> The strong prognostic value of the molecular subgroups has been shown previously in high-intermediate risk EC,<sup>3</sup> leading to additional studies to determine their role in adjuvant treatment. The ongoing, randomized PORTEC-4a trial compares standard adjuvant brachytherapy in women with intermediate-risk EC with individualized adjuvant treatment on the basis of the patients' integrated molecular profile.<sup>19</sup> Our results have



**FIG 2.** Kaplan-Meier survival curves for 5-year (A) recurrence-free survival (RFS) for patients with p53abn endometrial cancer (EC; 48.0%), *POLE*mut EC (98.0%), MMRd (71.7%), or NSMP EC (74.4%), and (B) overall survival (OS) in patients with p53abn EC (54.0%), *POLE*mut EC (98.0%), MMRd (81.3%), or NSMP EC (88.5%). MMRd, MMR-deficient; NSMP, no specific molecular profile; p53abn, p53-abnormal; *POLE*mut, *POLE*-ultramutated.

shown strong prognostic value of the molecular classification even in high-risk and advanced-stage EC and regardless of histologic subtype, indicating that this classification should be incorporated in standard clinical diagnostics, treatment decisions, and future studies.

This study showed that patients with p53abn EC have a highly significant benefit from CRT. These results are consistent with the PORTEC-3 clinical trial analysis, in which patients with serous cancers had a greater absolute benefit from CRT.<sup>8</sup> Indeed, 71% of serous cancers in the current study were classified as p53abn EC. However, the serous cancers that were molecularly classified as *POLE*mut (n = 6) and MMRd EC (n = 7) had no recurrences and patients were still alive at time of analysis. Only 2 of the 6 patients with a serous NSMP EC had a recurrence and ultimately died of their cancer. Additionally, 47 of 93 p53abn ECs (51%) had nonserous histology (23% EEC grade 3; 13% clear-cell cancers; 7% mixed; 4% grade 1 EEC; and 4% other histologies), and there was no difference in clinical outcome between this group and serous p53abn ECs. These results show that the molecular EC classification identifies a broader group of patients with a higher specificity who might benefit from CRT compared with traditional histotyping.

To further improve the survival of patients with p53abn EC, research may be directed at the addition of targeted adjuvant treatment to CRT. Recent studies have shown homologous recombination deficiency in p53abn EC,<sup>20,21</sup> suggesting that these patients could benefit from the addition of poly(ADP-ribose) polymerase inhibitors to CRT. Alternatively, for patients with p53abn EC and *HER2/neu*

amplification (reported in 20%-25% of serous cancers<sup>22</sup>), trastuzumab (and possibly pertuzumab) in combination with chemotherapy is promising, as indicated by results of a recent phase II clinical trial.<sup>23</sup>

This analysis confirms the excellent survival of patients with *POLE*mut EC even in those with advanced-stage and nonendometrioid histologies, with no differences between adjuvant treatment received. This favorable clinical outcome is thought to be the result of the patients' enhanced T-cell response due to their high mutational burden.<sup>24</sup> Previous studies have described small groups of patients with *POLE*mut EC who received no adjuvant treatment and had no recurrences.<sup>25,26</sup> Additionally, no increased sensitivity of *POLE*-mutant, mouse-derived embryonic stem cells to radiotherapy was found, nor to a selection of chemotherapeutics, including cisplatin.<sup>25</sup> Together with our results, these data support the hypothesis that the excellent prognosis of patients with *POLE*mut EC is independent of adjuvant treatment. By implementing *POLE* testing in routine diagnostics, overtreatment of a substantial group of patients would be avoided, with clear impact on the patients' quality of life.<sup>27</sup>

The lack of benefit observed from the addition of chemotherapy to RT in patients with MMRd EC suggests a favorable outcome with EBRT alone in stage I-II disease, as also found in the GOG-249 trial.<sup>28</sup> Furthermore, a recent study reported benefit of early-stage MMRd EC from RT compared with no adjuvant treatment.<sup>29</sup> Adjuvant treatment regimens other than chemotherapy should be explored in higher-stage MMRd ECs. Recently, immune checkpoint inhibition has been shown effective against

**TABLE 2.** Univariable and Multivariable Analysis of Molecular Subgroups and Clinicopathological Features in High-Risk Endometrial Cancers (N = 410)

Parameter	Total No.	Recurrence-Free Survival (n = 127 events)						Overall Survival (n = 92 events)					
		Univariable Analysis			Multivariable Analysis			Univariable Analysis			Multivariable Analysis		
		HR	95% CI	P	HR	95% CI	P	HR	95% CI	P	HR	95% CI	P
Age		1.052	1.028 to 1.075	< .001	1.037	1.013 to 1.061	.002	1.078	1.049 to 1.108	< .001	1.060	1.029 to 1.091	< .001
Molecular subgroups													
MMRd	137	1			1			1			1		
p53abn	93	2.448	1.607 to 3.728	< .001	2.517	1.621 to 3.907	< .001	2.622	1.647 to 4.173	< .001	2.298	1.418 to 3.726	.001
POLEmut	51	0.060	0.008 to 0.441	.006	0.079	0.011 to 0.576	.012	0.083	0.011 to 0.606	.014	0.118	0.016 to 0.868	.036
NSMP	129	0.993	0.632 to 1.562	.977	0.976	0.620 to 1.537	.917	0.581	0.320 to 1.053	.073	0.547	0.302 to 0.993	.047
Histology and grade													
Endometrioid, grade 1-2	161	1			1			1			1		
Endometrioid, grade 3	132	0.956	0.626 to 1.461	.837	1.067	0.646 to 1.762	.800	1.571	0.936 to 2.636	.087	1.463	0.814 to 2.628	.203
Nonendometrioid	117	1.239	0.816 to 1.882	.314	0.822	0.465 to 1.453	.500	1.997	1.198 to 3.328	.008	0.982	0.503 to 1.919	.958
Stage													
I-II	232	1			1			1			1		
III	178	1.868	1.315 to 2.654	< .001	2.186	1.518 to 3.148	< .001	1.545	1.026 to 2.328	.037	1.914	1.256 to 2.919	.003
LVSI													
Absent	155	1			1			1			1		
Present	255	1.492	1.023 to 2.175	.038	1.299	0.878 to 1.921	.191	1.560	0.996 to 2.444	.052	1.219	0.753 to 1.974	.420
Treatment													
RT	200	1			1			1			1		
CTRT	210	0.824	0.582 to 1.168	.277	0.700	0.493 to 0.993	0.046	0.817	0.542 to 1.230	0.333	0.726	0.481 to 1.096	.127

Abbreviations: CTRT, combined adjuvant chemotherapy and radiotherapy; HR, hazard ratio; LVSI, lymphovascular space invasion; MMRd, MMR-deficient; NSMP, no specific molecular profile; p53abn, p53-abnormal; POLEmut, POLE-ultramutated; RT, external beam radiotherapy alone.

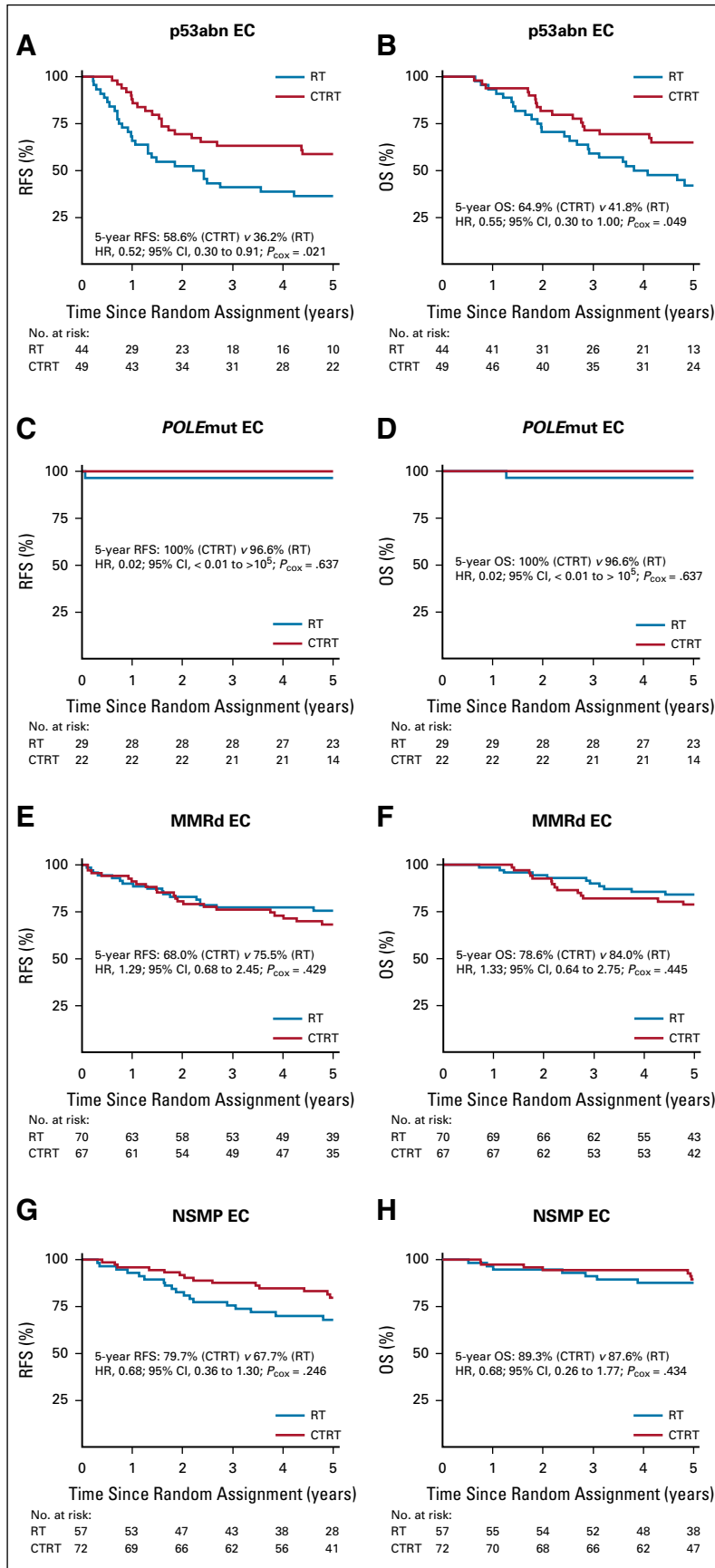
MMRd solid cancers, which has led to US Food and Drug Administration approval of pembrolizumab for MSI cancers. Phase II clinical trials have shown high response rates to immune checkpoint inhibitors in advanced stage EC,<sup>30</sup> which might be increased by the combination of these therapeutic agents with RT.<sup>31</sup>

The analysis of NSMP ECs showed only a trend toward benefit from adjuvant CTRT. Still, the HRs of CTRT versus RT for NSMP cancers were similar to those observed in the PORTEC-3 trial.<sup>8</sup> The lack of significant effect of CTRT may be due to the relatively small numbers and molecular heterogeneity that characterizes NSMP EC.<sup>1</sup> Additional studies directed at refinement of NSMP EC, such as characterization of *CTNWB1* exon-3 mutations, the potential fifth molecular subgroup,<sup>3,32</sup> may elucidate which

patients with NSMP EC might benefit from intensified adjuvant treatment.

PORTEC-3 analysis showed a greater benefit of added CT for patients with stage III EC and those with serous cancers.<sup>8</sup> The current study provides insight into the biologic origins of this observation, identifying differences between the molecular subgroups. The high benefit of added CT observed across patients with p53abn EC in all stages (RFS: HR, 0.52;  $P = .022$ ) corresponds partly to the benefit seen in serous cancers. The small numbers available per stage suggest that larger cohorts may identify significant differences in stage III p53abn EC (a nonsignificant benefit from CTRT was seen in this group of patients; RFS: HR, 0.58,  $P = .172$ ), as well as in stage III NSMP cancers (RFS: HR, 0.68,  $P = .246$ ). We observed no significant benefit from





**FIG 3.** Kaplan-Meier survival curves for (A) recurrence-free survival (RFS) and (B) overall survival (OS) among patients with p53abn endometrial cancer (EC); (C) RFS and (D) OS among patients with *POLE*mut EC; (E) RFS and (F) OS among patients with MMRd EC; and (G) RFS and (H) OS among patients with NSMP EC. CTRT, combined adjuvant chemotherapy and radiotherapy; HR, hazard ratio; MMRd, MMR-deficient; NSMP, no specific molecular profile; p53abn, p53-abnormal;  $P_{\text{cox}}$ ,  $P$  value by Cox regression analysis; *POLE*mut, *POLE*-ultramutated tumor; RT, external beam radiotherapy alone.

CTRT for patients with MMRd EC, even after analysis by stage, indicating that this molecular subgroup may not be contributing to the stage III results observed in PORTEC-3.<sup>8</sup> Finally, although data were limited, patients with stage III *POLEmut* EC appeared to have a good clinical outcome in both treatment arms: only 1 of 12 patients randomly assigned to the RT arm had a recurrence and died of EC. Prospective observational studies will help define adequate de-escalation of adjuvant treatment of *POLEmut* EC, especially for stage III cancers.

Our study has limitations. Although it was a predefined translational research analysis within the context of the PORTEC-3 clinical trial, it was not originally powered for analysis by molecular subgroup. Additionally, we were able

to obtain molecular results of 62% of the trial population. Nonetheless, the characteristics of the included cases were comparable to those of the excluded trial population.

In conclusion, our study shows the strong prognostic information the EC molecular classification carries, as well as its great potential to guide adjuvant treatment. It is essential to implement the molecular EC classification in clinical diagnostics and decision-making. Patients with p53abn EC may be considered for adjuvant treatment including chemotherapy, whereas adjuvant treatment de-escalation should be considered for those with *POLEmut* EC; additional studies are needed especially for MMRd and NSMP EC. Future clinical trials should include molecular subgroups in their design and study specific targeted adjuvant treatments.

## AFFILIATIONS

<sup>1</sup>Department of Pathology, Leiden University Medical Center, Leiden, the Netherlands

<sup>2</sup>Department of Radiation Oncology, Leiden University Medical Center, Leiden, the Netherlands

<sup>3</sup>Department of Clinical Oncology, Barts Health National Health Service Trust, London, United Kingdom

<sup>4</sup>Department of Medical Oncology, Peter MacCallum Cancer Centre, Melbourne, Victoria, Australia

<sup>5</sup>Division of Medical Oncology and Hematology, Sunnybrook Odette Cancer Centre, Toronto, Ontario, Canada

<sup>6</sup>Department of Medical Oncology, Gustave Roussy, Villejuif, France

<sup>7</sup>Department of Gynecology, University Medical Center Groningen, University of Groningen, Groningen, the Netherlands

<sup>8</sup>Department of Pathology, Barts Health National Health Service Trust, London, United Kingdom

<sup>9</sup>Institute of Health and Biomedical Innovation, Queensland University of Technology, Brisbane, Queensland, Australia

<sup>10</sup>Canadian Cancer Trials Group, Department of Obstetrics and Gynecology, University of Sherbrooke, Sherbrooke, Quebec, Canada

<sup>11</sup>Canadian Cancer Trials Group, Radiation Medicine Program, Princess Margaret Cancer Centre, Toronto, Ontario, Canada

<sup>12</sup>Department of Radiotherapy, Gustave Roussy, Villejuif, France

<sup>13</sup>Division of Cancer Sciences, University of Manchester, St Mary's Hospital, Manchester, United Kingdom

<sup>14</sup>Department of Biostatistics, Leiden University Medical Center, Leiden, the Netherlands

Health Research Manchester Biomedical Research Centre (Grant No. IS-BRC-1215-20007).

## AUTHORS' DISCLOSURES OF POTENTIAL CONFLICTS OF INTEREST AND DATA AVAILABILITY STATEMENT

Disclosures provided by the authors and data availability statement (if applicable) are available with this article at DOI <https://doi.org/10.1200/JCO.20.00549>.

## AUTHOR CONTRIBUTIONS

**Conception and design:** Alicia León-Castillo, Stephanie M. de Boer, Melanie E. Powell, Helen J. Mackay, Alexandra Leary, Vincent T. H. B. M. Smit, Richard J. Edmondson, Henry C. Kitchener, Emma J. Crosbie, Remi A. Nout, Carien L. Creutzberg, Tjalling Bosse

**Administrative support:** Paul Bessette

**Provision of study material or patients:** Melanie E. Powell, Linda R. Mileshekin, Alexandra Leary, Naveena Singh, Paul Bessette, Anthony Fyles, Christine Haie-Meder, Remi A. Nout, Carien L. Creutzberg

**Collection and assembly of data:** Alicia León-Castillo, Stephanie M. de Boer, Melanie E. Powell, Linda R. Mileshekin, Helen J. Mackay, Naveena Singh, Paul Bessette, Anthony Fyles, Vincent T. H. B. M. Smit, Emma J. Crosbie, Marco de Bruyn, Carien L. Creutzberg, Tjalling Bosse

**Data analysis and interpretation:** Alicia León-Castillo, Stephanie M. de Boer, Linda R. Mileshekin, Alexandra Leary, Hans W. Nijman, Pamela M. Pollock, Paul Bessette, Christine Haie-Meder, Vincent T. H. B. M. Smit, Richard J. Edmondson, Hein Putter, Emma J. Crosbie, Nanda Horeweg, Carien L. Creutzberg, Tjalling Bosse

**Manuscript writing:** All authors

**Final approval of manuscript:** All authors

**Accountable for all aspects of the work:** All authors

## CORRESPONDING AUTHOR

Tjalling Bosse, MD, PhD, Leiden University Medical Center, Albinusdreef 2, 2333 ZA Leiden, South Holland, the Netherlands; Twitter: LUMC\_leiden; e-mail: T.Bosse@lumc.nl.

## EQUAL CONTRIBUTION

C.L.C. and T.B. share senior authorship.

## PRIOR PRESENTATION

Presented at the European Society for Medical Oncology conference, Barcelona, Spain, September 27-October 1, 2019; and at the European Society of Gynecological Oncology conference, Athens, Greece, November 2-5, 2019.

## SUPPORT

Supported by the Dutch Cancer Society (KWF Kankerbestrijding; Grant No. 10418/2016-1 [T.B.J.]). E.J.C. is supported by National Institute for

## ACKNOWLEDGMENT

We thank all clinical and pathology teams at participating sites of the PORTEC-3 study groups: Dutch Gynaecological Oncology Group (the Netherlands), National Cancer Research Institute (UK), Australia New Zealand Gynaecological Oncology Group (Australia and New Zealand), Fedegyn (France), and Canadian Cancer Trials Group (Canada), as well as all the women who participated in the trial. We thank K. Verhoeven-Adema (Comprehensive Cancer Center, the Netherlands) for her dedicated work as central PORTEC-3 data manager and trial coordinator. We also thank the central review pathologists G. Wilson (Central Manchester Hospitals National Health Service Foundation Trust, United Kingdom), J. Pyman (Royal Women's Hospital, Australia), C.M. McLachlin (Western University, Canada) and P. Duvillard (Institut Gustave Roussy, France) and the coordinating teams for the collection of

tissue material, as well as the technicians T. Rutten, N.T. ter Haar, M. Osse, and E.J. Dreef at Leiden University Medical Center for excellent technical support.

This study was performed with tissue samples from the randomized clinical trial PORTEC-3 (International Standard Randomised Controlled Trial Number ISRCTN14387080; ClinicalTrials.gov identifier: NCT00411138).

## REFERENCES

- Levine DA, Kandoth C, Schultz N, et al: Integrated genomic characterization of endometrial carcinoma. *Nature* 497:67-73, 2013 [Erratum: *Nature* 500:242, 2013]
- Talhok A, McConechy MK, Leung S, et al: A clinically applicable molecular-based classification for endometrial cancers. *Br J Cancer* 113:299-310, 2015
- Stelloo E, Nout RA, Osse EM, et al: Improved risk assessment by integrating molecular and clinicopathological factors in early-stage endometrial cancer-combined analysis of the PORTEC cohorts. *Clin Cancer Res* 22:4215-4224, 2016
- Talhok A, McConechy MK, Leung S, et al: Confirmation of ProMisE: A simple, genomics-based clinical classifier for endometrial cancer. *Cancer* 123:802-813, 2017
- Kommoss S, McConechy MK, Kommoss F, et al: Final validation of the ProMisE molecular classifier for endometrial carcinoma in a large population-based case series. *Ann Oncol* 29:1180-1188, 2018
- Colombo N, Creutzberg C, Querleu D, et al: Appendix 5: Endometrial cancer: eUpdate published online 8 June 2017 ([www.esmo.org/Guidelines/Gynaecological-Cancers](http://www.esmo.org/Guidelines/Gynaecological-Cancers)). *Ann Oncol* 28:iv153-iv156, 2017 (suppl\_4)
- de Boer SM, Powell ME, Mileskin L, et al: Adjuvant chemoradiotherapy versus radiotherapy alone for women with high-risk endometrial cancer (PORTEC-3): Final results of an international, open-label, multicentre, randomised, phase 3 trial. *Lancet Oncol* 19:295-309, 2018
- de Boer SM, Powell ME, Mileskin L, et al: Adjuvant chemoradiotherapy versus radiotherapy alone in women with high-risk endometrial cancer (PORTEC-3): Patterns of recurrence and post-hoc survival analysis of a randomised phase 3 trial. *Lancet Oncol* 20:1273-1285, 2019
- Gilks CB, Oliva E, Soslow RA: Poor interobserver reproducibility in the diagnosis of high-grade endometrial carcinoma. *Am J Surg Pathol* 37:874-881, 2013
- Bendifallah S, Canlorbe G, Collinet P, et al: Just how accurate are the major risk stratification systems for early-stage endometrial cancer? *Br J Cancer* 112:793-801, 2015
- de Boer SM, Wortman BG, Bosse T, et al: Clinical consequences of upfront pathology review in the randomised PORTEC-3 trial for high-risk endometrial cancer. *Ann Oncol* 29:424-430, 2018
- van Eijk R, Stevens L, Morreau H, et al: Assessment of a fully automated high-throughput DNA extraction method from formalin-fixed, paraffin-embedded tissue for KRAS, and BRAF somatic mutation analysis. *Exp Mol Pathol* 94:121-125, 2013
- León-Castillo A, Britton H, McConechy MK, et al: Interpretation of somatic POLE mutations in endometrial carcinoma. *J Pathol* 250:323-335, 2020
- Vermij L, Smit V, Nout R, et al: Incorporation of molecular characteristics into endometrial cancer management. *Histopathology* 76:52-63, 2020
- León-Castillo A, Gilvazquez E, Nout R, et al: Clinicopathological and molecular characterisation of 'multiple-classifier' endometrial carcinomas. *J Pathol* 250:312-322, 2020
- Stelloo E, Jansen AML, Osse EM, et al: Practical guidance for mismatch repair-deficiency testing in endometrial cancer. *Ann Oncol* 28:96-102, 2017
- Singh N, Piskorz AM, Bosse T, et al: p53 Immunohistochemistry is an accurate surrogate for TP53 mutational analysis in endometrial carcinoma biopsies. *J Pathol* 250:336-345, 2020
- Sari A, Pollett A, Eiriksson LR, et al: Interobserver agreement for mismatch repair protein immunohistochemistry in endometrial and nonserous, nonmucinous ovarian carcinomas. *Am J Surg Pathol* 43:591-600, 2019
- International Standard Randomised Controlled Trial Number: Protocol/serial number UL2011-5336;p16.054;NL56828.058.16, PORTEC-4a: Randomised trial of standard or molecular profile-based recommendation for radiotherapy after surgery for women with early stage endometrial cancer. <https://www.isrctn.com/ISRCTN11659025>
- de Jonge MM, Auguste A, van Wijk LM, et al: Frequent homologous recombination deficiency in high-grade endometrial carcinomas. *Clin Cancer Res* 25:1087-1097, 2019
- de Jonge MM, Ritterhouse LL, de Kroon CD, et al: Germline *BRCA*-associated endometrial carcinoma is a distinct clinicopathologic entity. *Clin Cancer Res* 25:7517-7526, 2019
- Buza N, Roque DM, Santin AD: HER2/neu in endometrial cancer: A promising therapeutic target with diagnostic challenges. *Arch Pathol Lab Med* 138:343-350, 2014
- Fader AN, Roque DM, Siegel E, et al: Randomized phase II trial of carboplatin-paclitaxel versus carboplatin-paclitaxel-trastuzumab in uterine serous carcinomas that overexpress human epidermal growth factor receptor 2/neu. *J Clin Oncol* 36:2044-2051, 2018
- Rayner E, van Gool IC, Palles C, et al: A panoply of errors: Polymerase proofreading domain mutations in cancer. *Nat Rev Cancer* 16:71-81, 2016
- Van Gool IC, Rayner E, Osse EM, et al: Adjuvant treatment for *POLE* proofreading domain-mutant cancers: Sensitivity to radiotherapy, chemotherapy, and nucleoside analogues. *Clin Cancer Res* 24:3197-3203, 2018
- McConechy MK, Talhouk A, Leung S, et al: Endometrial carcinomas with *POLE* exonuclease domain mutations have a favorable prognosis. *Clin Cancer Res* 22:2865-2873, 2016
- de Boer SM, Powell ME, Mileskin L, et al: Toxicity and quality of life after adjuvant chemoradiotherapy versus radiotherapy alone for women with high-risk endometrial cancer (PORTEC-3): An open-label, multicentre, randomised, phase 3 trial. *Lancet Oncol* 17:1114-1126, 2016
- Randall ME, Filiaci V, McMeekin DS, et al: Phase III trial: Adjuvant pelvic radiation therapy versus vaginal brachytherapy plus paclitaxel/carboplatin in high-intermediate and high-risk early stage endometrial cancer. *J Clin Oncol* 37:1810-1818, 2019
- Reijnen C, Küsters-Vandeveldel HVN, Prinsen CF, et al: Mismatch repair deficiency as a predictive marker for response to adjuvant radiotherapy in endometrial cancer. *Gynecol Oncol* 154:124-130, 2019
- Marabelle A, Le DT, Ascierio PA, et al: Efficacy of pembrolizumab in patients with noncolorectal high microsatellite instability/mismatch repair-deficient cancer: Results from the Phase II KEYNOTE-158 Study. *J Clin Oncol* 28:1-10, 2020
- Gong J, Le TQ, Massarelli E, et al: Radiation therapy and PD-1/PD-L1 blockade: The clinical development of an evolving anticancer combination. *J Immunother Cancer* 6:46, 2018
- Kurnit KC, Kim GN, Fellman BM, et al: CTNNB1 (beta-catenin) mutation identifies low grade, early stage endometrial cancer patients at increased risk of recurrence. *Mod Pathol* 30:1032-1041, 2017



**AUTHORS' DISCLOSURES OF POTENTIAL CONFLICTS OF INTEREST****Molecular Classification of the PORTEC-3 Trial for High-Risk Endometrial Cancer: Impact on Prognosis and Benefit From Adjuvant Therapy**

The following represents disclosure information provided by authors of this manuscript. All relationships are considered compensated unless otherwise noted. Relationships are self-held unless noted. I = Immediate Family Member, Inst = My Institution. Relationships may not relate to the subject matter of this manuscript. For more information about ASCO's conflict of interest policy, please refer to [www.asco.org/rwc](http://www.asco.org/rwc) or [ascopubs.org/jco/authors/author-center](http://ascopubs.org/jco/authors/author-center).

Open Payments is a public database containing information reported by companies about payments made to US-licensed physicians ([Open Payments](#)).

**Helen J. Mackay**

**Honoraria:** AstraZeneca, GlaxoSmithKline

**Consulting or Advisory Role:** Merck, Eisai

**Alexandra Leary**

**Honoraria:** AstraZeneca, Clovis Oncology

**Consulting or Advisory Role:** Clovis Oncology (Inst), AstraZeneca (Inst), Tesaro (Inst), BioCad, Gritstone Oncology, Seattle Genetics, Ability Pharma (Inst), MSD (Inst), GlaxoSmithKline (Inst), Merck Serono (Inst)

**Research Funding:** Merus (Inst), GamaMabs Pharma (Inst), Inivata (Inst)

**Travel, Accommodations, Expenses:** AstraZeneca, Tesaro

**Hans W. Nijman**

**Stock and Other Ownership Interests:** ViciniVax

**Research Funding:** Aduro Biotech (Inst), BioNTech (Inst), Merck Sharp & Dohme (Inst), AIMM Therapeutics (Inst), DCPrime (Inst), ZonMw, Health Holland, TKI, Dutch Cancer Society

**Naveena Singh**

**Consulting or Advisory Role:** MSD, AstraZeneca

**Pamela M. Pollock**

**Patents, Royalties, Other Intellectual Property:** Patent: "Methods of Diagnosing, classifying and treating endometrial cancer and pre cancer," filed in 2007, awarded in 2019

**Paul Bessette**

**Research Funding:** Tesaro, Canadian Cancer Trials Group, Merck, AstraZeneca, Clovis Pharmaceuticals

**Richard J. Edmondson**

**Honoraria:** Arquer Dagnostics

**Research Funding:** Tesaro

**Travel, Accommodations, Expenses:** Arquer Diagnostics, AstraZeneca, Clovis Pharmaceuticals

**Marco de Bruyn**

**Research Funding:** Dutch Cancer Society, Health Holland, ERC, AIMM Therapeutics, Aduro Biotech Europe (Inst), BioNTech (Inst), DCPrime (Inst), MSD Oncology (Inst)

**Patents, Royalties, Other Intellectual Property:** Patent on antibody-based imaging of resident memory T cells

**Remi A. Nout**

**Research Funding:** Varian (Inst), Elekta (Inst), Accuray (Inst)

**Nanda Horeweg**

**Research Funding:** Varian (Inst)

**Carie L. Creutzberg**

**Research Funding:** Dutch Cancer Society

**Tjalling Bosse**

**Research Funding:** Dutch Cancer Society

No other potential conflicts of interest were reported.